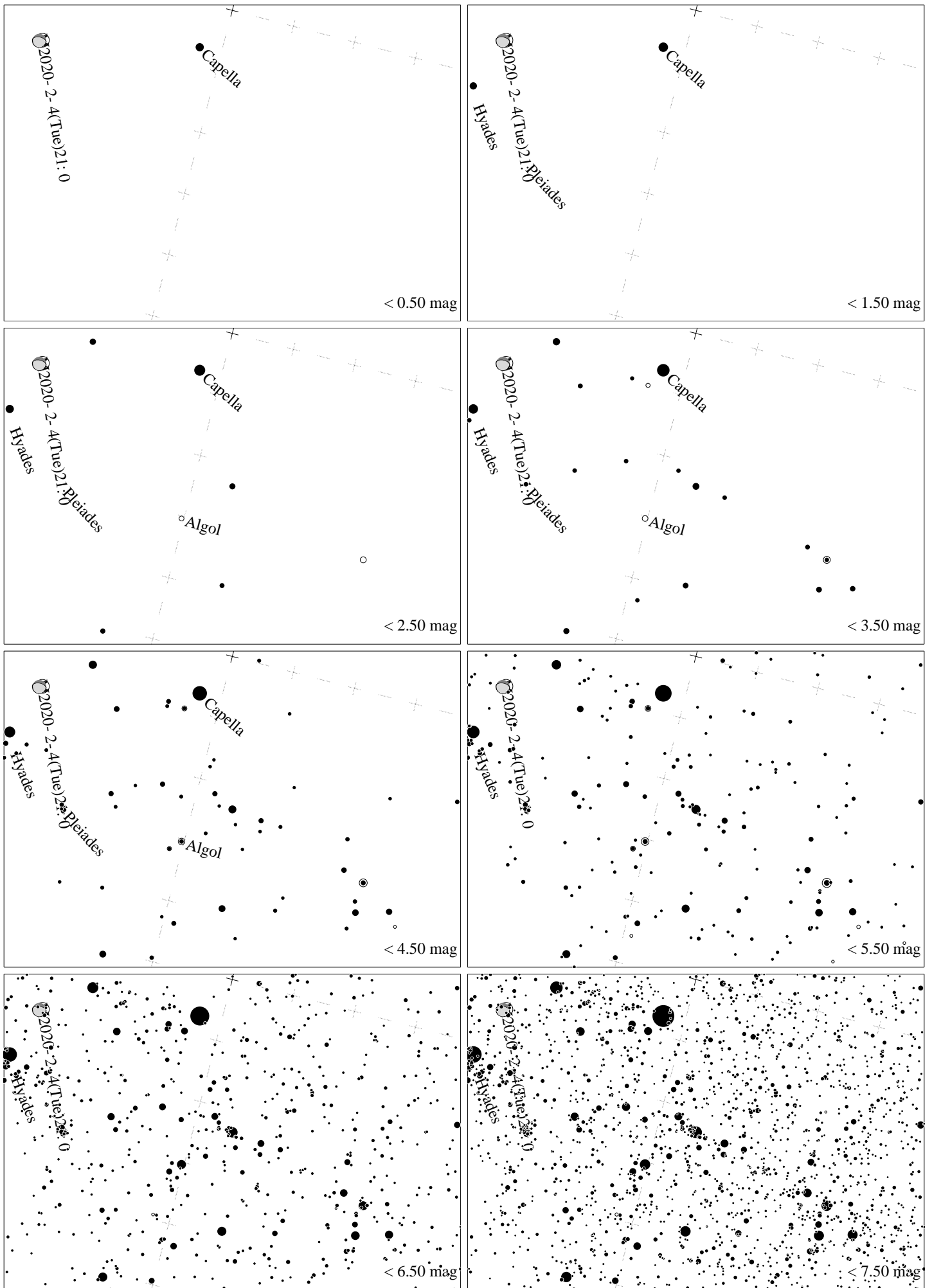
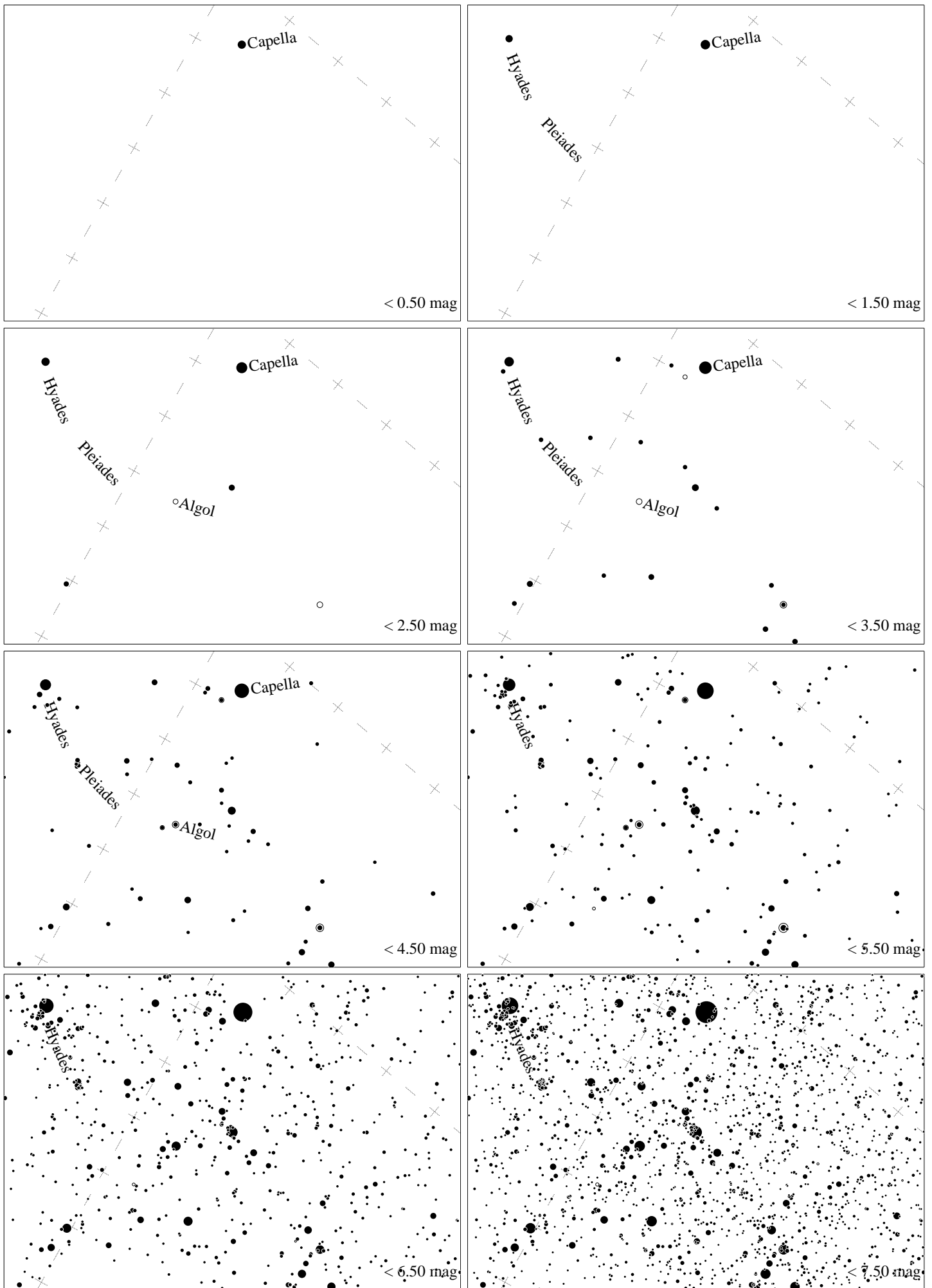


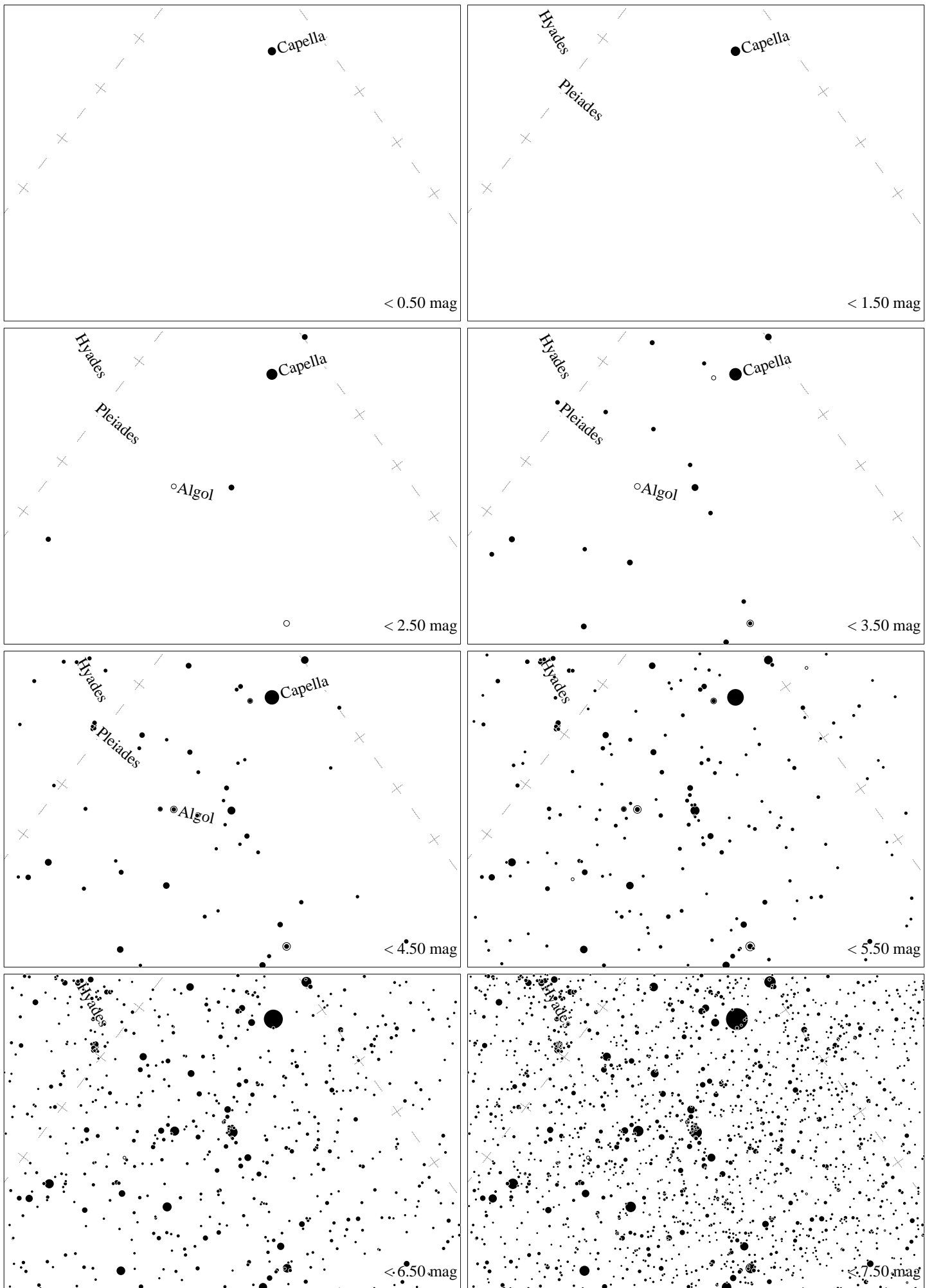
Maps for Globe at Night latitude  $60^\circ$ , 2020-02-04, 21 h local time (Sun at  $-34^\circ$ ), transparent air. Lines from N(E,S,W) to zenith shown (crosses each  $10^\circ$ ). Centered at Mirfak ( $\alpha$  Persei),  $82^\circ$  to the right from S, at  $66^\circ$  height. The brightest star is Capella. Map vertical size  $50^\circ$ . *Jan Hollan, CzechGlobe*



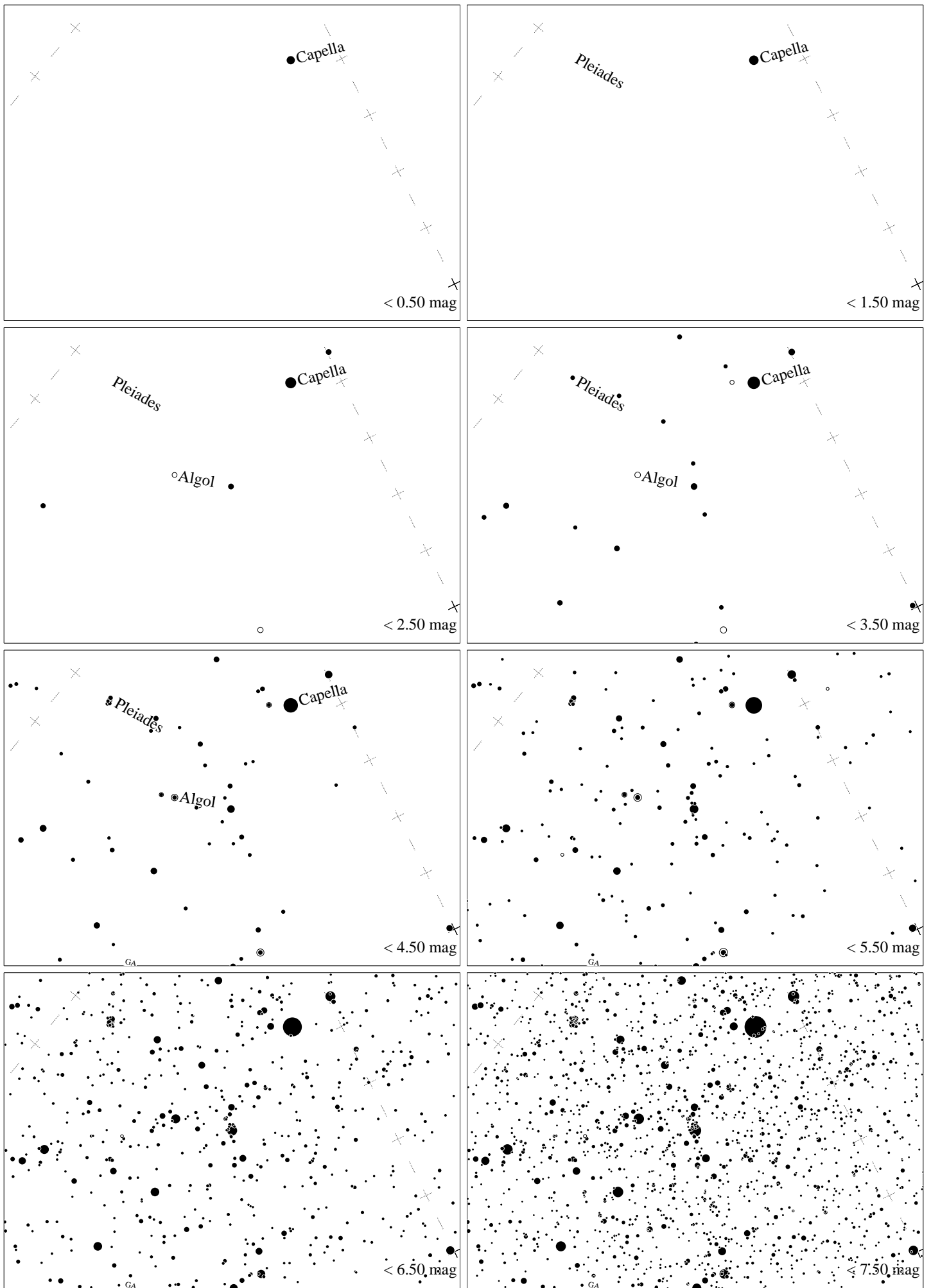
Maps for Globe at Night latitude  $50^\circ$ , 2020-02-04, 21 h local time (Sun at  $-38^\circ$ ), transparent air. Lines from N(E,S,W) to zenith shown (crosses each  $10^\circ$ ). Centered at Mirfak ( $\alpha$  Persei),  $75^\circ$  to the left from N, at  $66^\circ$  height. The brightest star is Capella. Map vertical size  $50^\circ$ . *Jan Hollan, CzechGlobe*



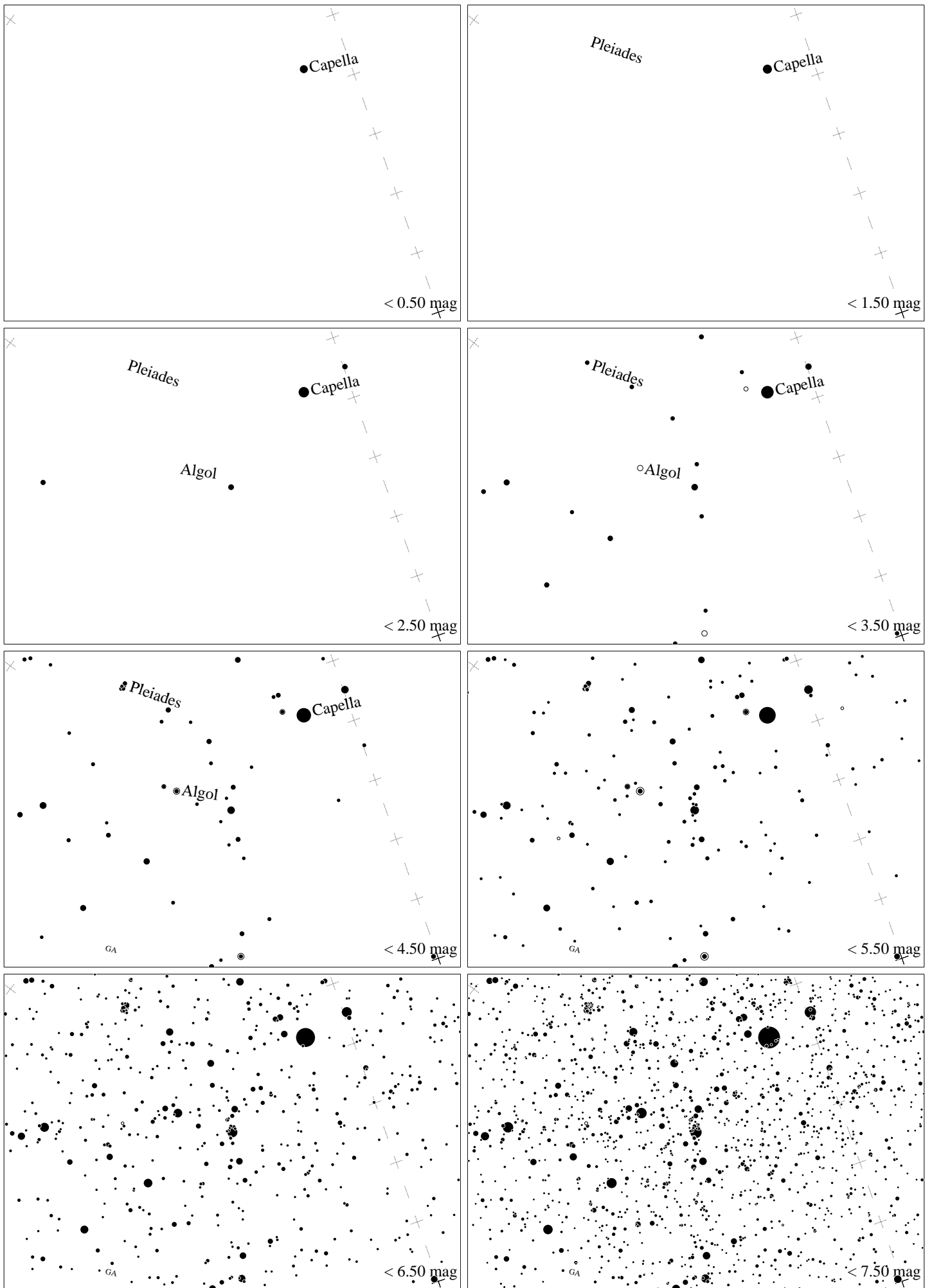
Maps for Globe at Night latitude  $40^\circ$ , 2020-02-04, 21 h local time (Sun at  $-42^\circ$ ), transparent air. Lines from N(E,S,W) to zenith shown (crosses each  $10^\circ$ ). Centered at Mirfak ( $\alpha$  Persei),  $57^\circ$  to the left from N, at  $62^\circ$  height. The brightest star is Capella. Map vertical size  $50^\circ$ . *Jan Hollan, CzechGlobe*



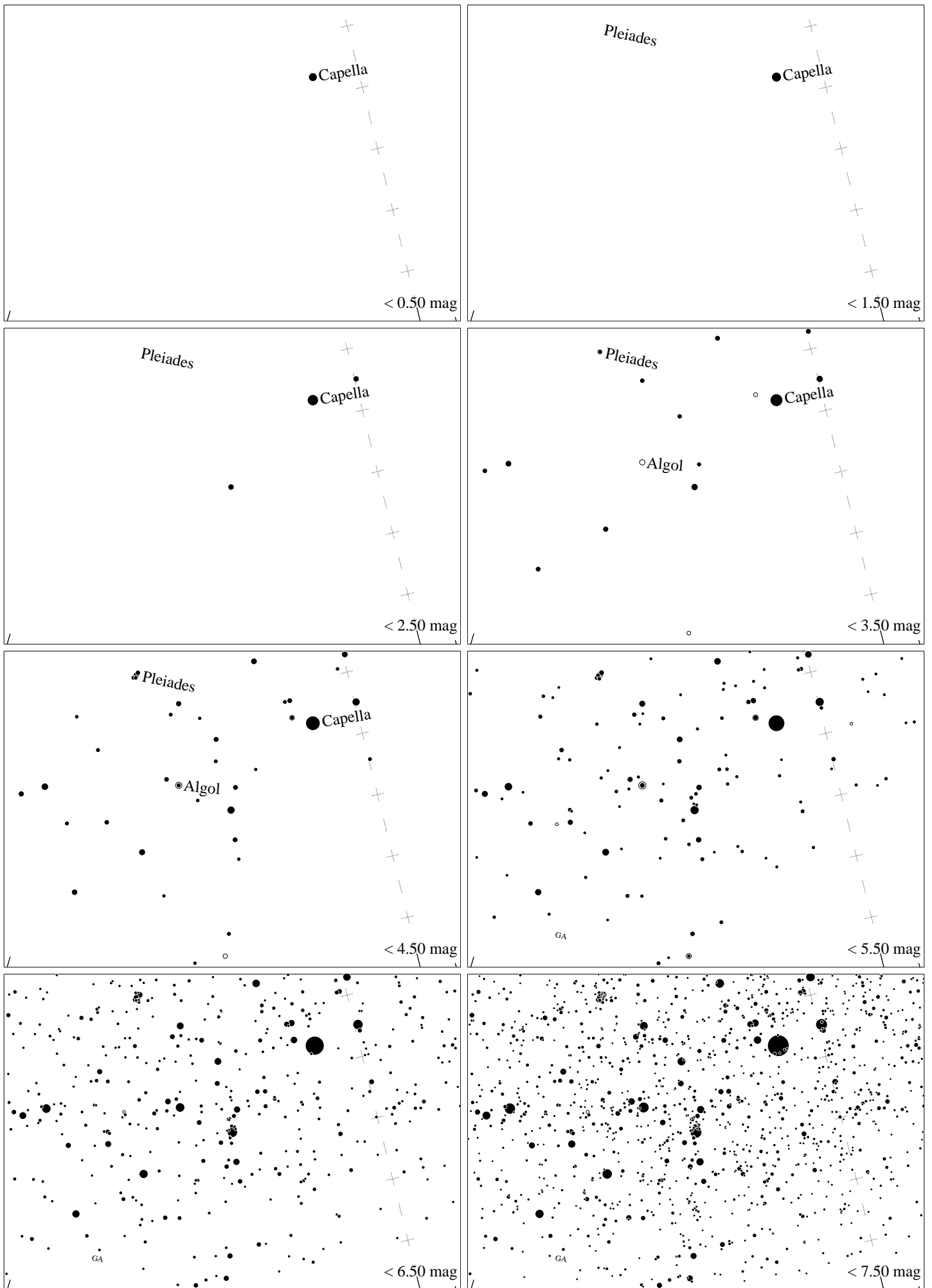
Maps for Globe at Night latitude  $30^\circ$ , 2020-02-04, 21 h local time (Sun at  $-44^\circ$ ), transparent air. Lines from N(E,S,W) to zenith shown (crosses each  $10^\circ$ ). Centered at Mirfak ( $\alpha$  Persei),  $44^\circ$  to the left from N, at  $55^\circ$  height. The brightest star is Capella. Map vertical size  $50^\circ$ . *Jan Hollan, CzechGlobe*



Maps for Globe at Night latitude  $20^\circ$ , 2020-02-04, 21 h local time (Sun at  $-44^\circ$ ), transparent air. Lines from N(E,S,W) to zenith shown (crosses each  $10^\circ$ ). Centered at Mirfak ( $\alpha$  Persei),  $36^\circ$  to the left from N, at  $48^\circ$  height. The brightest star is Capella. Map vertical size  $50^\circ$ . *Jan Hollan, CzechGlobe*



Maps for Globe at Night latitude  $10^\circ$ , 2020-02-04, 21 h local time (Sun at  $-42^\circ$ ), transparent air. Lines from N(E,S,W) to zenith shown (crosses each  $10^\circ$ ). Centered at Mirfak ( $\alpha$  Persei),  $31^\circ$  to the left from N, at  $39^\circ$  height. The brightest star is Capella. Map vertical size  $50^\circ$ . *Jan Hollan, CzechGlobe*



Maps for Globe at Night latitude  $0^\circ$ , 2020-02-04, 21 h local time (Sun at  $-40^\circ$ ), transparent air. Lines from N(E,S,W) to zenith shown (crosses each  $10^\circ$ ). Centered at Mirfak ( $\alpha$  Persei),  $27^\circ$  to the left from N, at  $30^\circ$  height. The brightest star is Capella. Map vertical size  $50^\circ$ . *Jan Hollan, CzechGlobe*