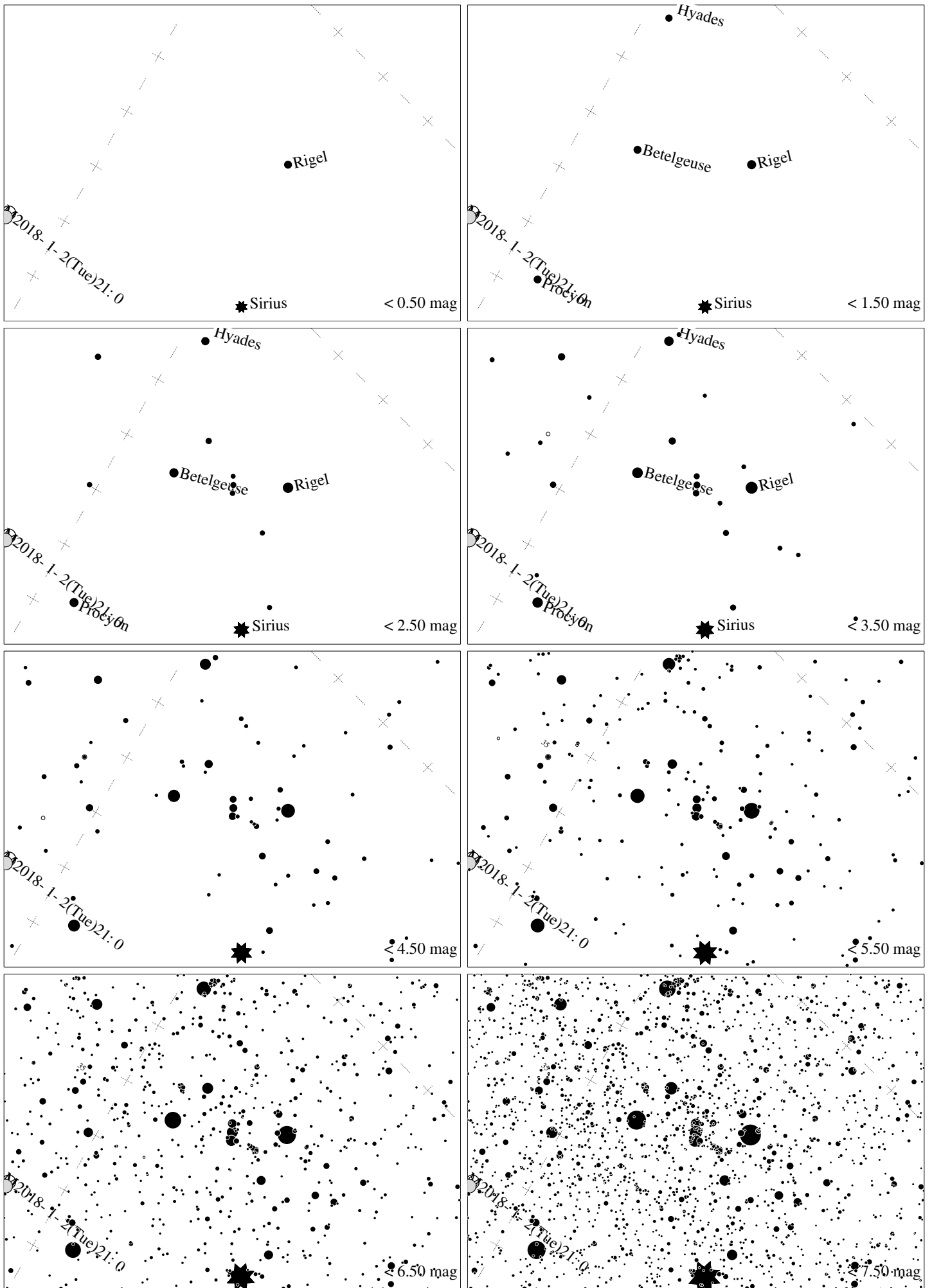
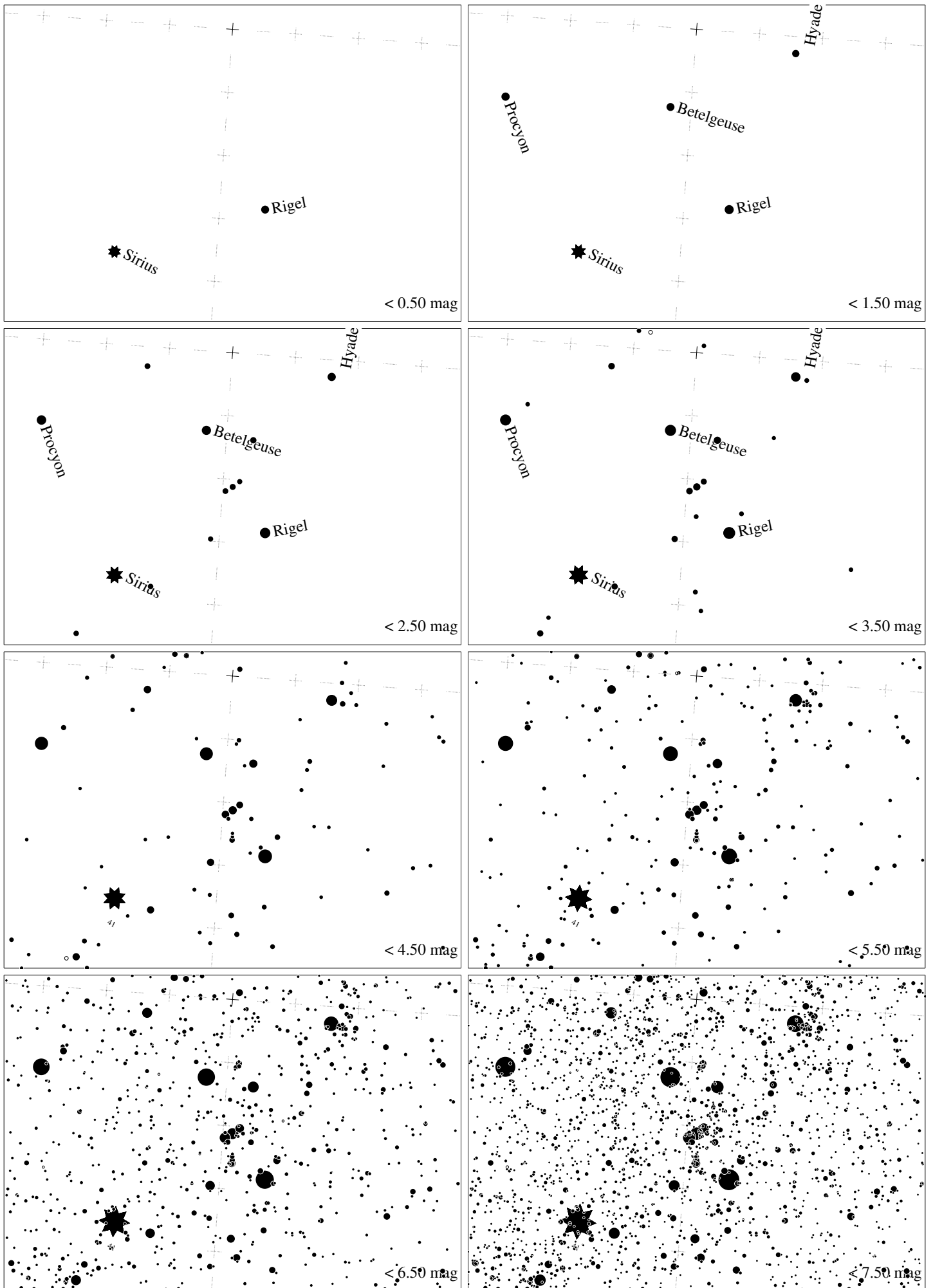


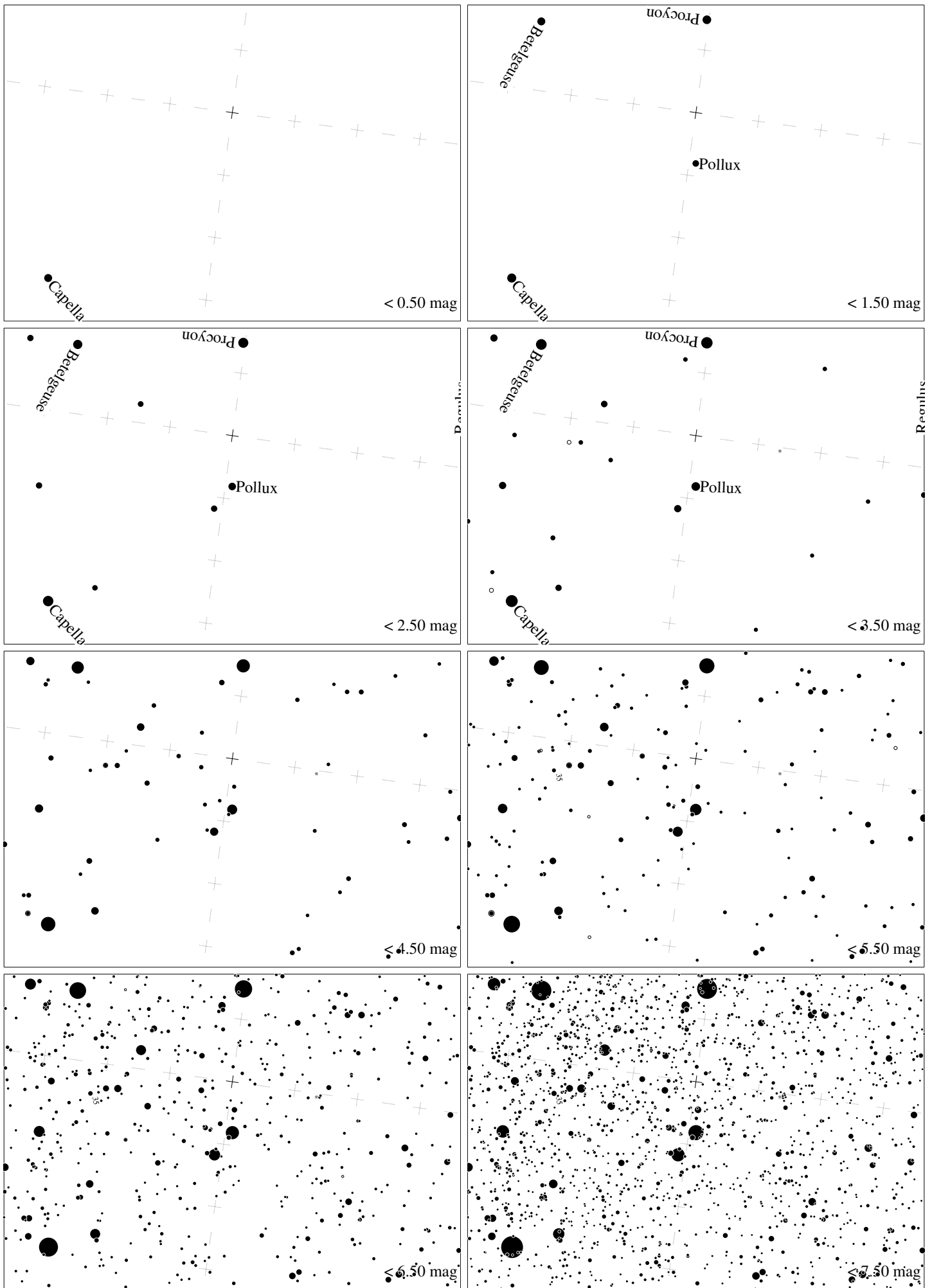
Maps for Globe at Night at latitude 20° , 2019-01-02, 21 h local time (Sun at -47°), transparent air. Lines from N(E,S,W) to zenith shown (crosses each 10°). The brightest fixed star Sirius is 53° to the left from S, at 33° height. Star cluster M 41 marked when appropriate. Map vertical size is 50° . *Jan Hollan, CzechGlobe*



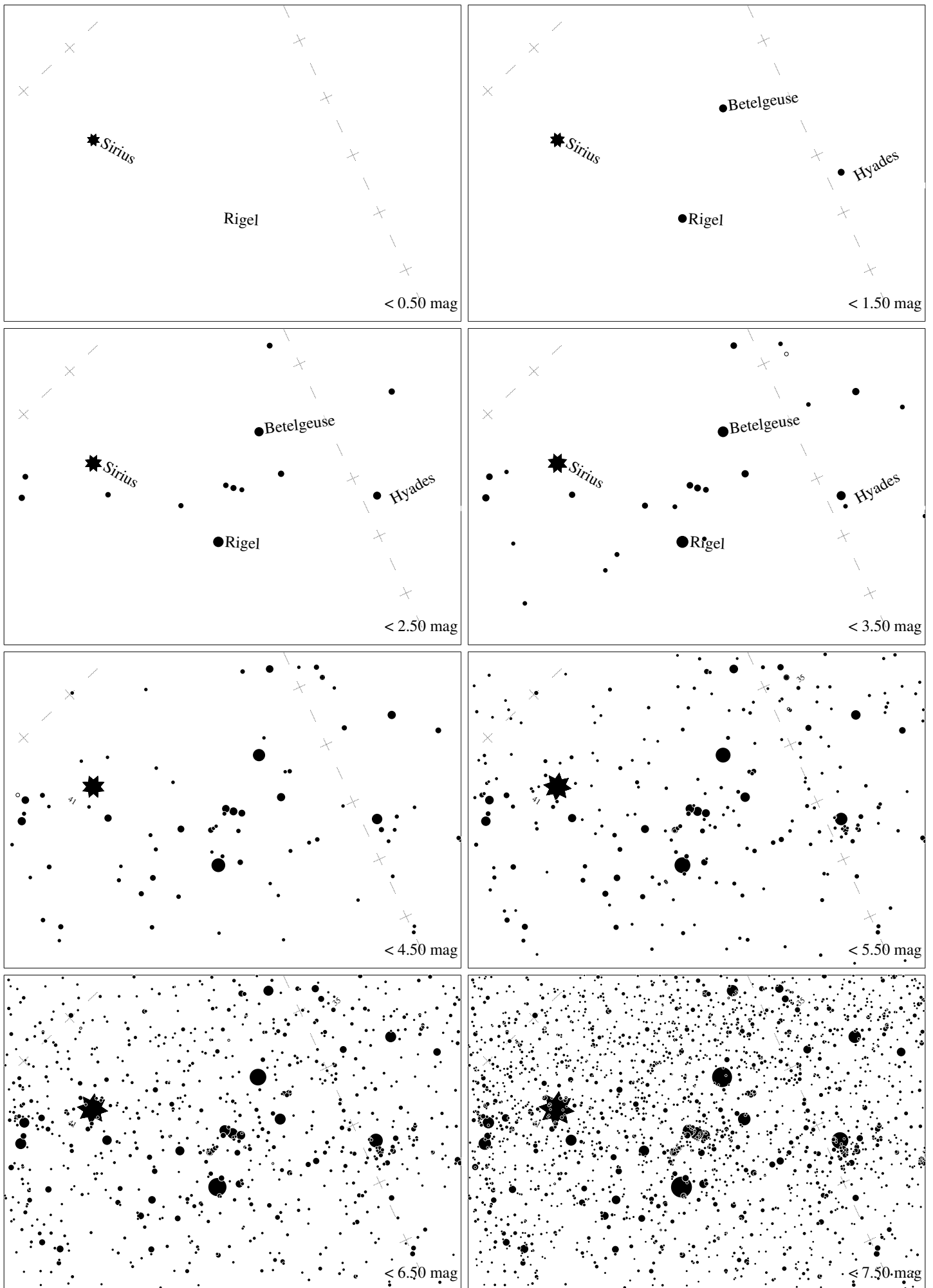
Maps for Globe at Night at latitude 20° , 2018-01-02, 21 h local time (Sun at -47°), transparent air. Lines from N(E,S,W) to zenith shown (crosses each 10°). Orion's belt is 54° to the left from S, at 56° height. Star clusters M 41 and M35 marked when appropriate. Map vertical size is 50° . *Jan Hollan maps, CzechGlobe*



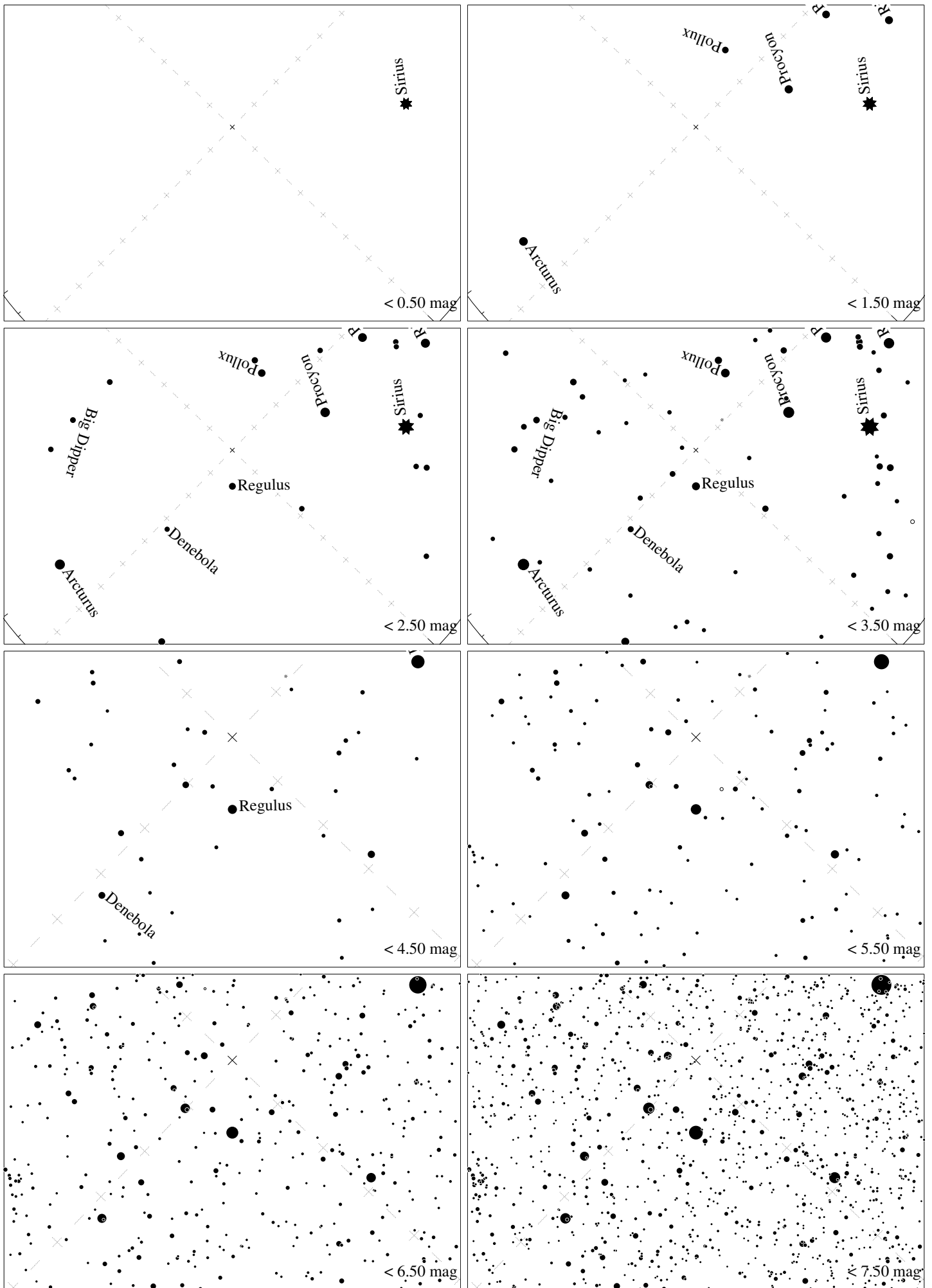
Maps for Globe at Night at latitude 20° , 2019-01-31, 21 h local time (Sun at -44°), transparent air. Lines from N(E,S,W) to zenith shown (crosses each 10°). Orion's belt is 4° to the right from S, at 69° height. Star clusters M 41 and M35 marked when appropriate. Map vertical size is 50° . *Jan Hollan maps, CzechGlobe*



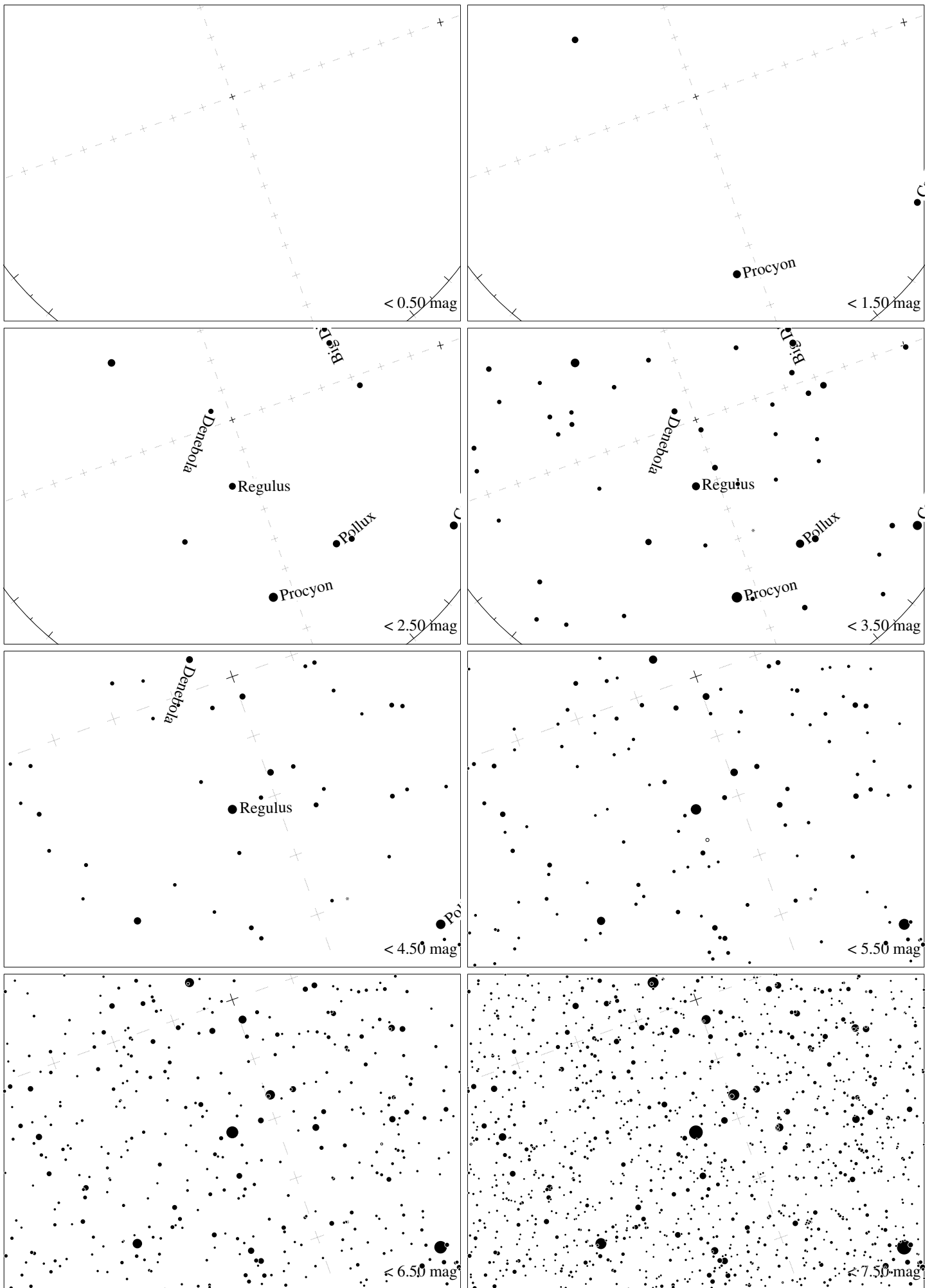
Maps for Globe at Night at latitude 20° , 2019-03-02, 21 h local time (Sun at -42°), transparent air. Lines from N(E,S,W) to zenith shown (crosses each 10°). Pollux is 8° to the right from N, at 82° height. Star cluster M35 marked when appropriate. Map vertical size is 50° . *Jan Hollan maps, CzechGlobe*



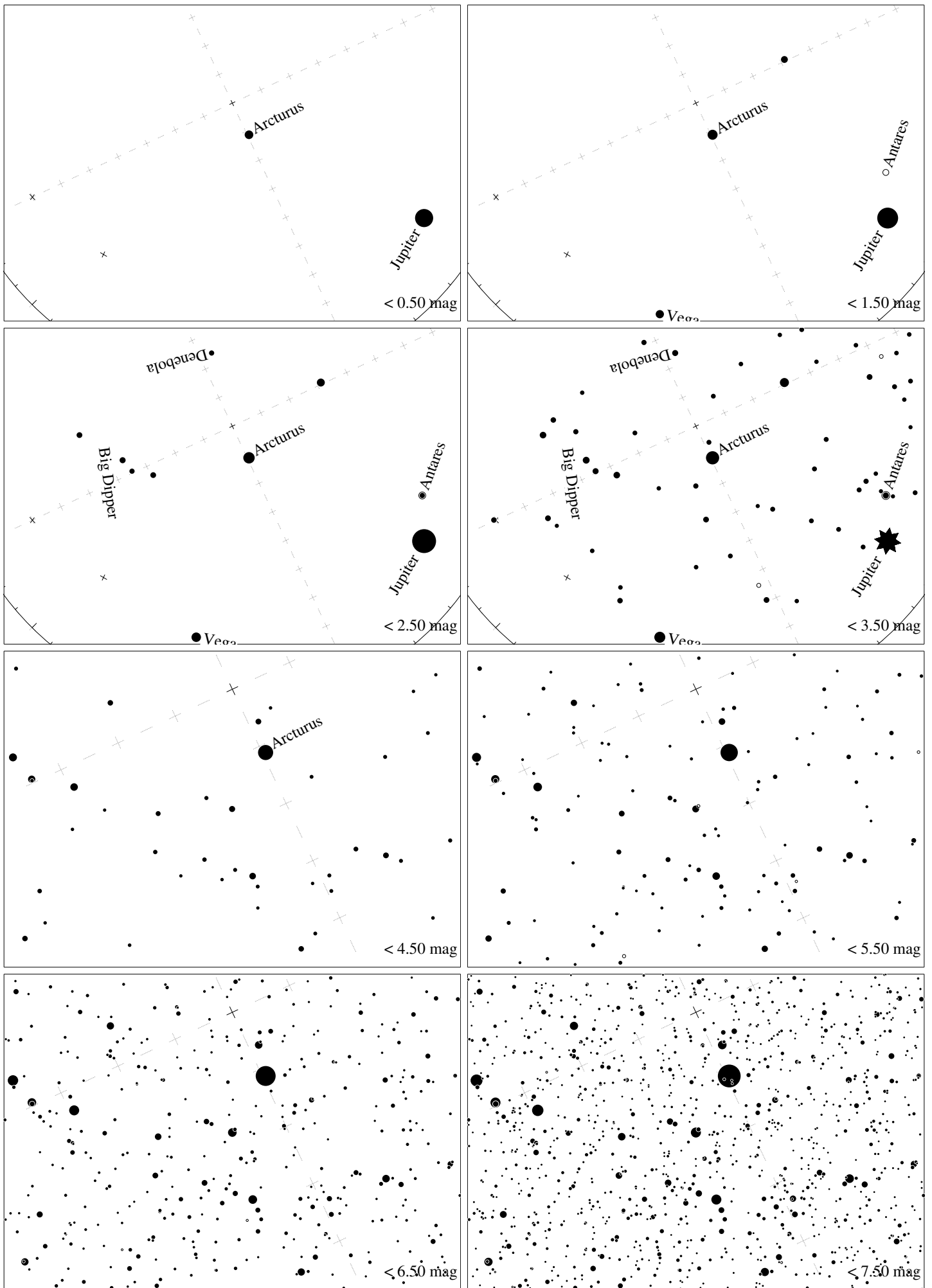
Maps for Globe at Night at latitude 20° , 2019-03-02, 21 h local time (Sun at -42°), transparent air. Lines from N(E,S,W) to zenith shown (crosses each 10°). Orion's belt is 59° to the right from S, at 53° height. Star clusters M 41 and M35 marked when appropriate. Map vertical size is 50° . *Jan Hollan maps, CzechGlobe*



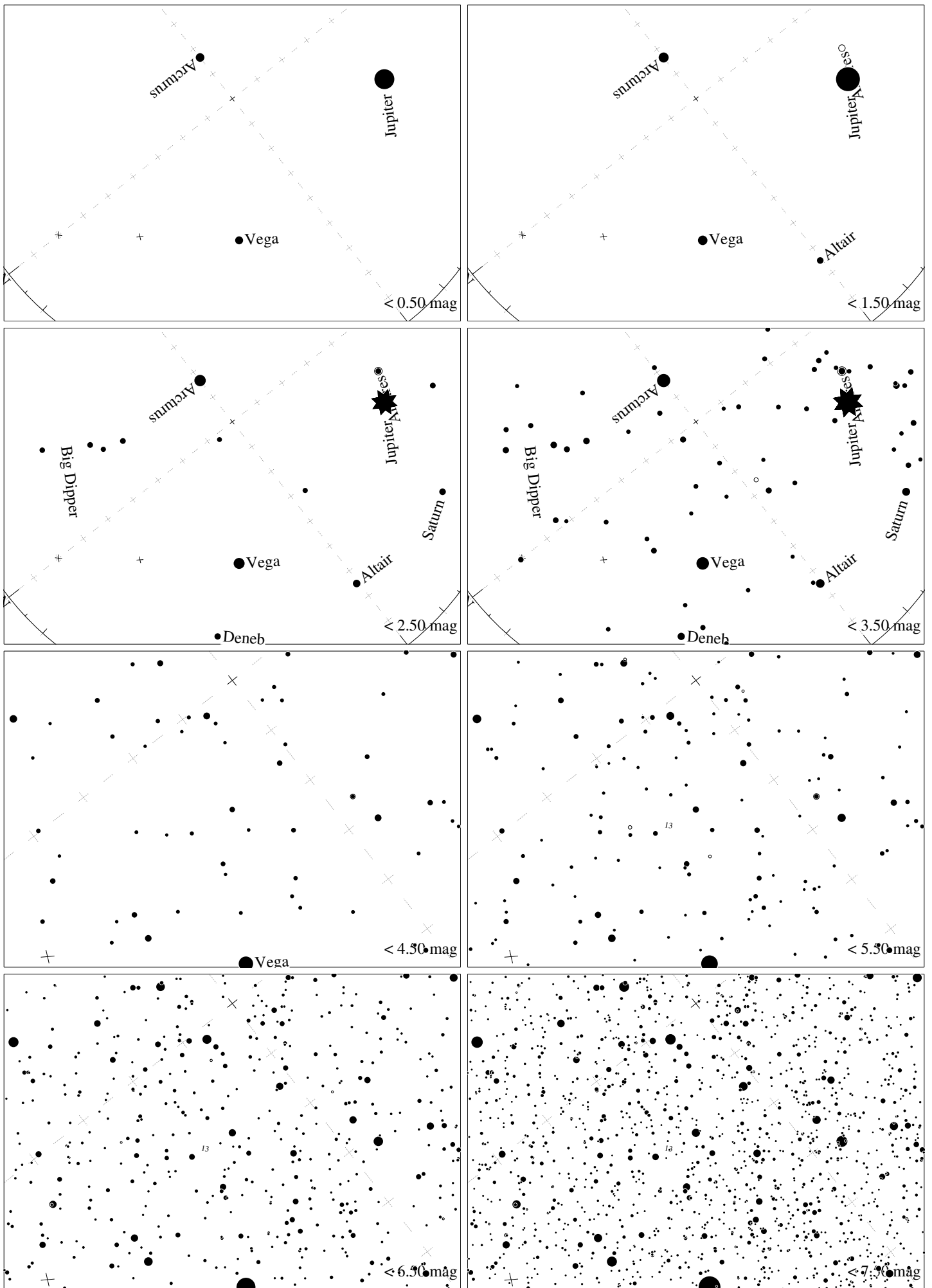
Maps for Globe at Night at latitude 20° , 2019-03-31, 21 h local time (Sun at -39°), transparent air. Lines from N(E,S,W) to zenith shown (crosses each 10°). Regulus (α Leonis) is 46° to the left from S, at 79° height. Detailed maps 50° vertically, the first four maps 100° . *Jan Hollan maps, CzechGlobe*



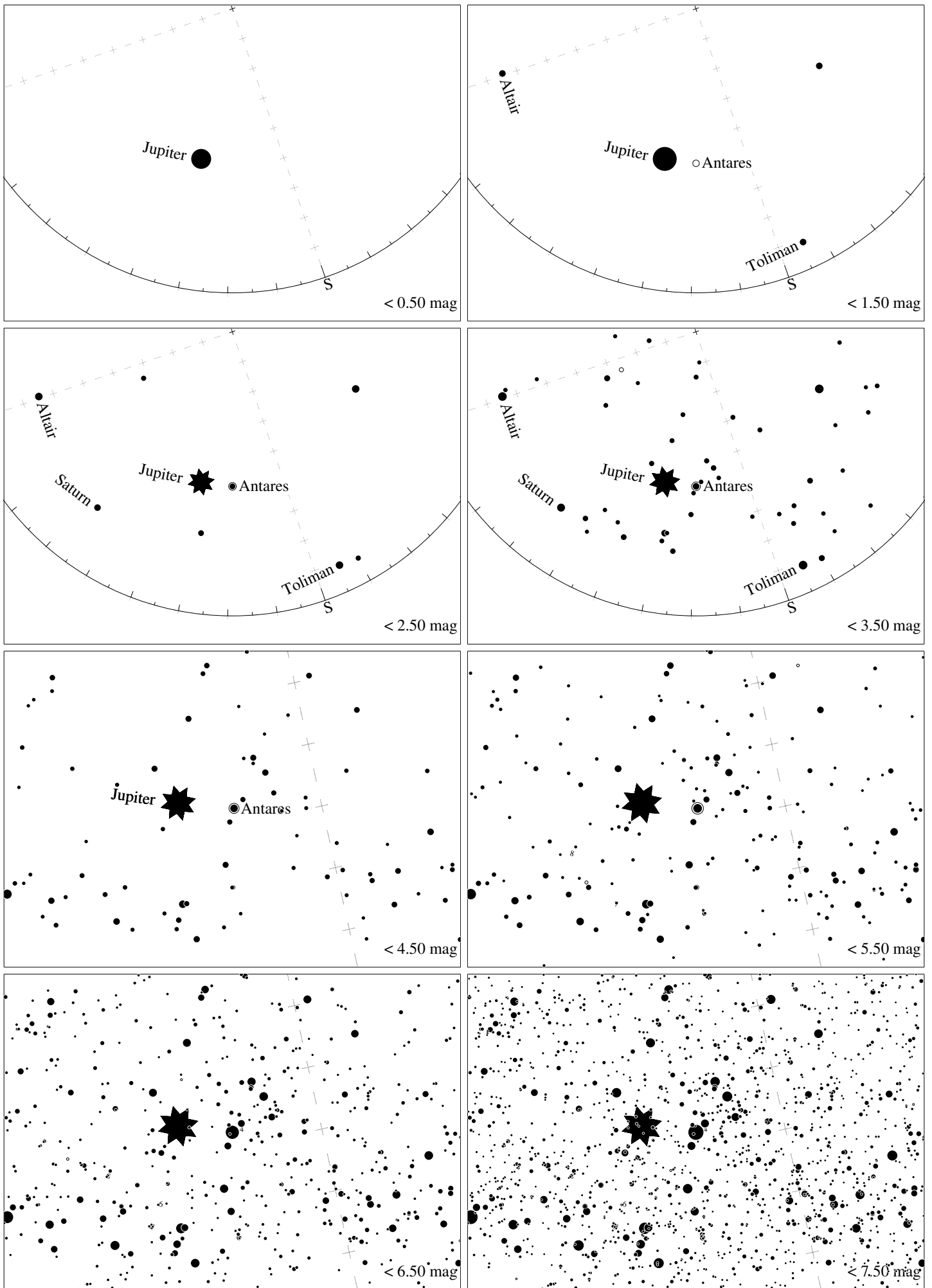
Maps for Globe at Night at latitude 20° , 2019-04-29, 21 h local time (Sun at -34°), transparent air. Lines from N(E,S,W) to zenith shown (crosses each 10°). Regulus (α Leonis) is 70° to the right from S, at 69° height. Detailed maps 50° vertically, the first four maps 100° . *Jan Hollan maps, CzechGlobe*



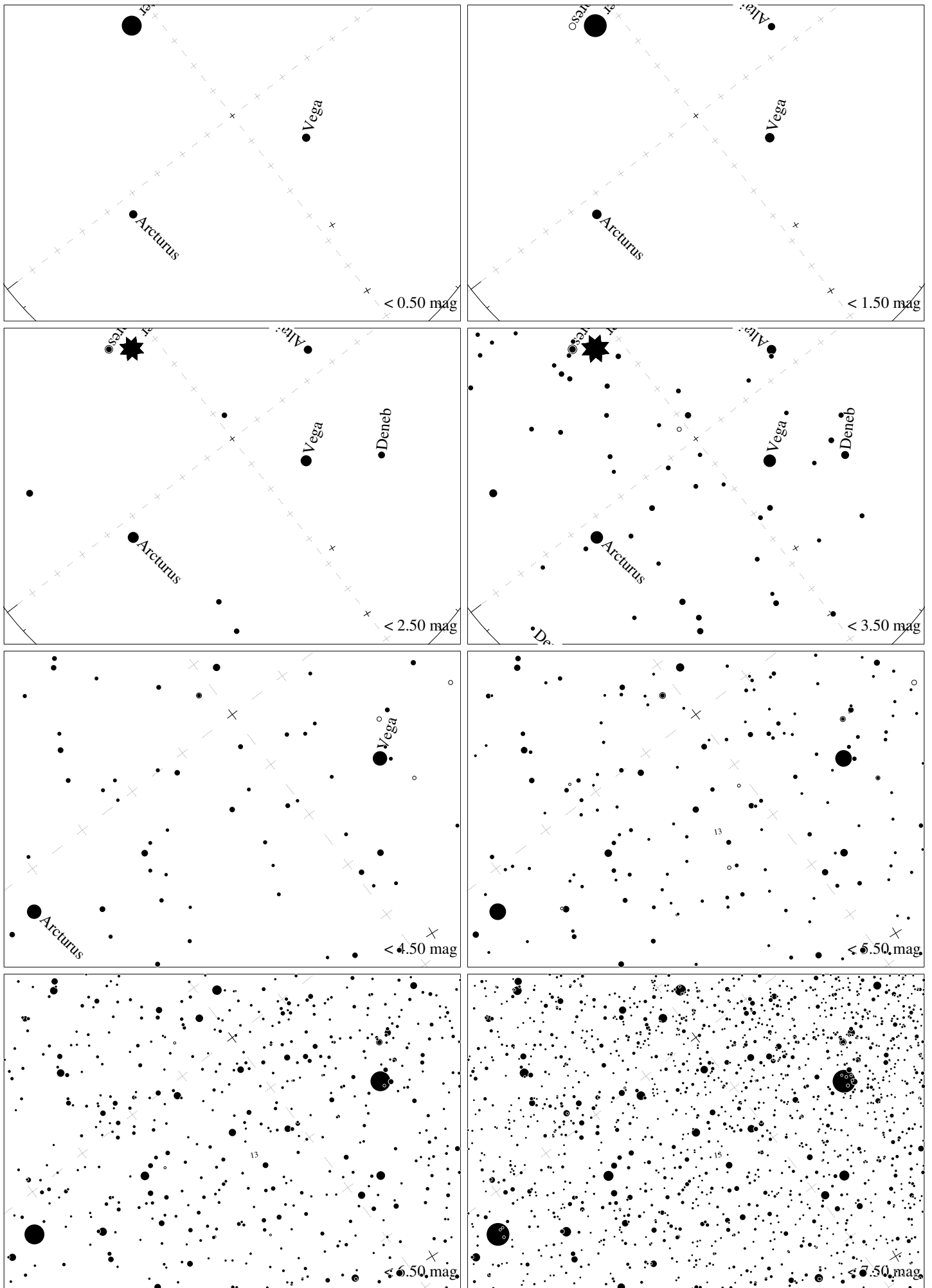
Maps for Globe at Night latitude 20° , 2019-05-29, 21 h local time (Sun at -30°), transparent air. Lines from N(E,S,W) to zenith shown (crosses each 10°). Centered on Izar (ϵ Bootis), which is 65° to the right from N, at 71° height. Detailed maps 50° vertically, the first four maps 100° . *Jan Hollan, CzechGlobe*



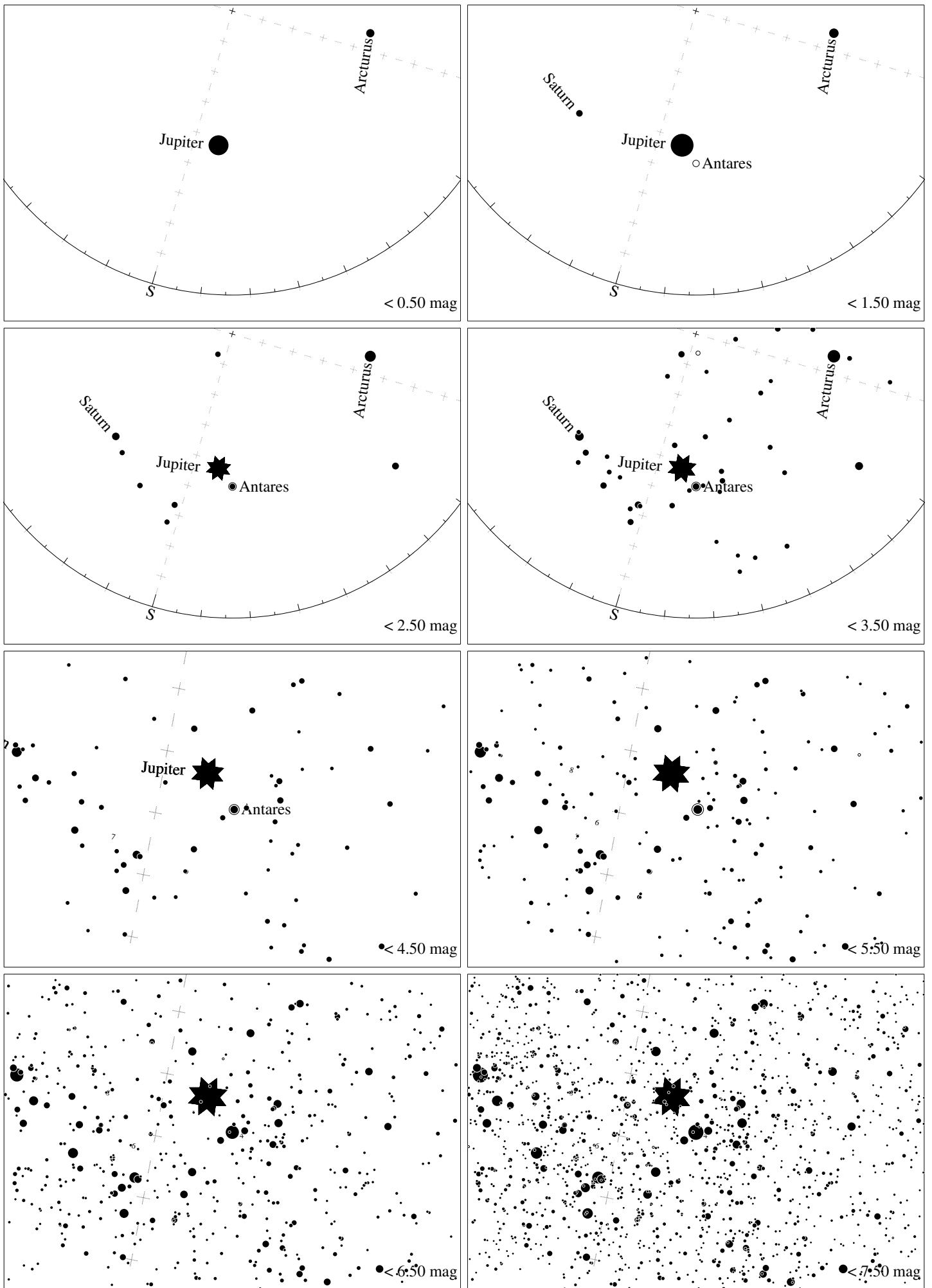
Maps for Globe at Night latitude 20° , 2019-06-28, 22 h local time (Sun at -28°), transparent air. Lines from N(E,S,W) to zenith shown (crosses each 10°). Centered on ζ Herculis, which is 52° to the right from N, at 70° height. Detailed maps 50° vertically, the first four maps 100° . *Jan Hollan, CzechGlobe*



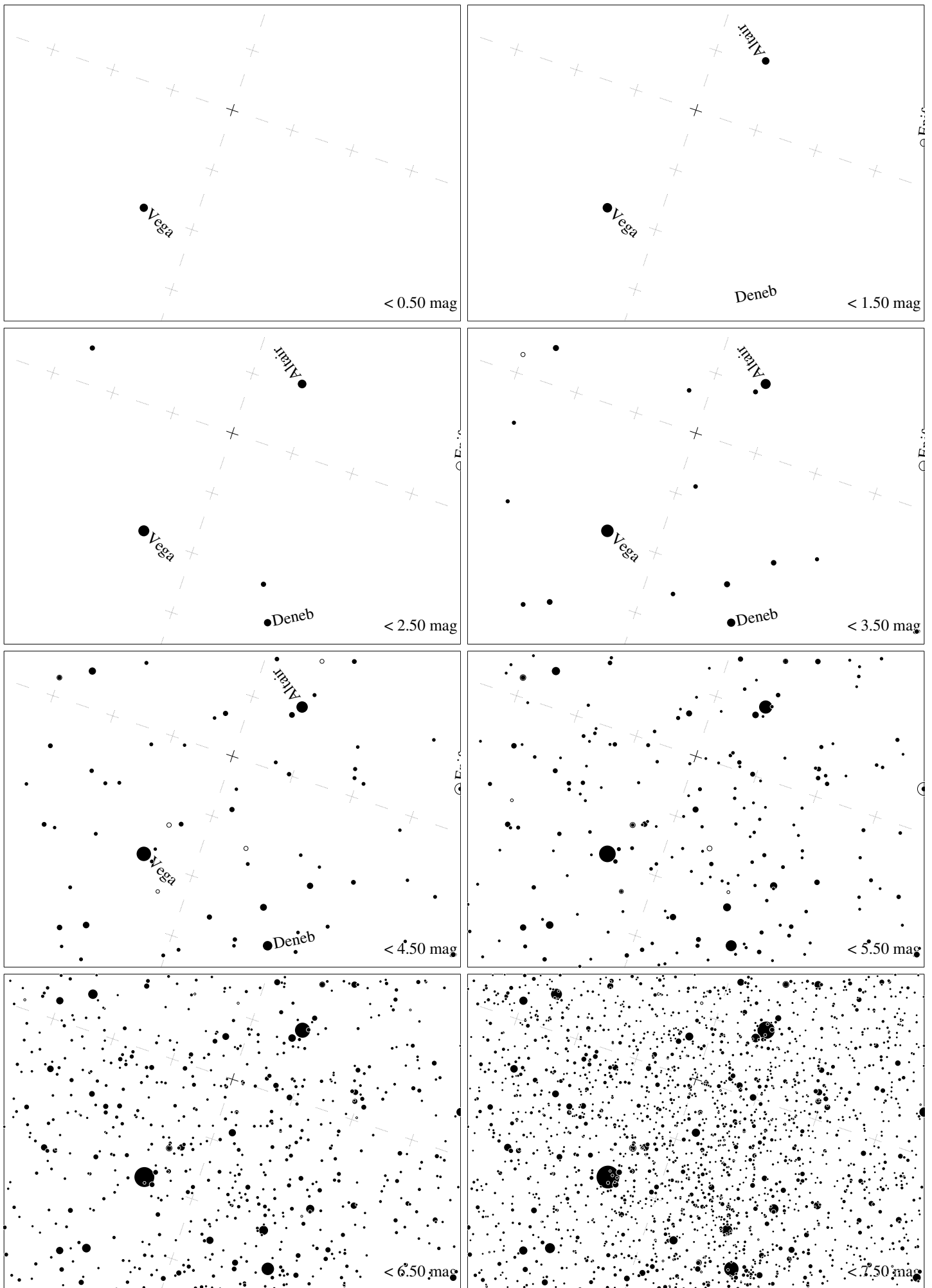
Maps for Globe at Night latitude 20° , 2019-06-28, 21 h local time (Sun at -28°), transparent air. Lines from N(E,S,W) to zenith shown (crosses each 10°). Centered on Antares (α Scorpii), which is 19° to the left from S, at 41° height. Detailed maps 50° vertically, the first four maps 100° . *Jan Hollan, CzechGlobe*



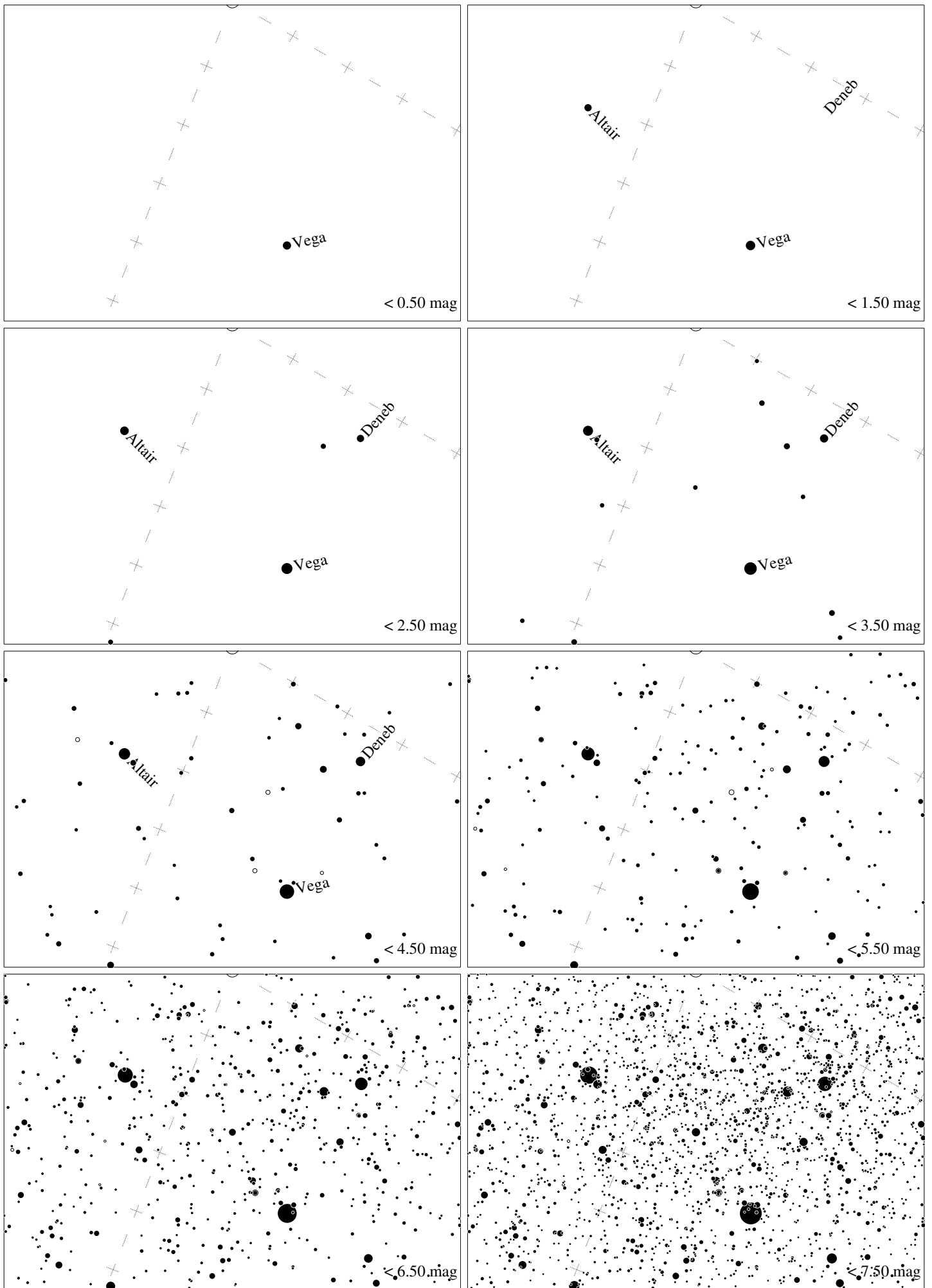
Maps for Globe at Night latitude 20° , 2019-07-28, 22 h local time (Sun at -30°), transparent air. Lines from N(E,S,W) to zenith shown (crosses each 10°). Centered on ζ Herculis, which is 38° to the left from N, at 75° height. Detailed maps 50° vertically, the first four maps 100° . *Jan Hollan, CzechGlobe*



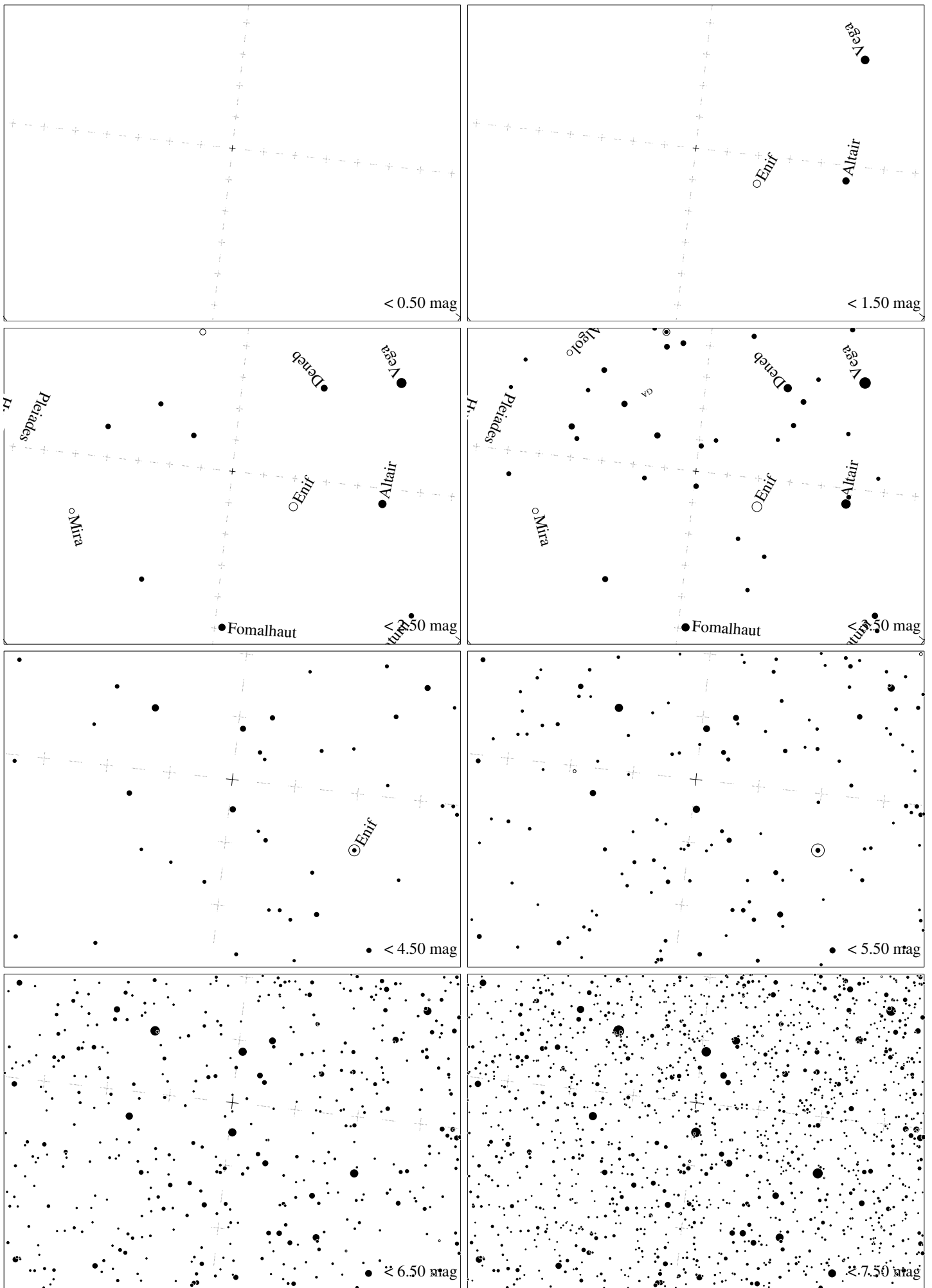
Maps for Globe at Night latitude 20°, 2019-07-28, 21 h local time (Sun at -30°), transparent air. Lines from N(E,S,W) to zenith shown (crosses each 10°). Centered on Antares (α Scorpii), which is 16° to the right from S, at 42° height. Detailed maps 50° vertically, the first four maps 100° . *Jan Hollan, CzechGlobe*



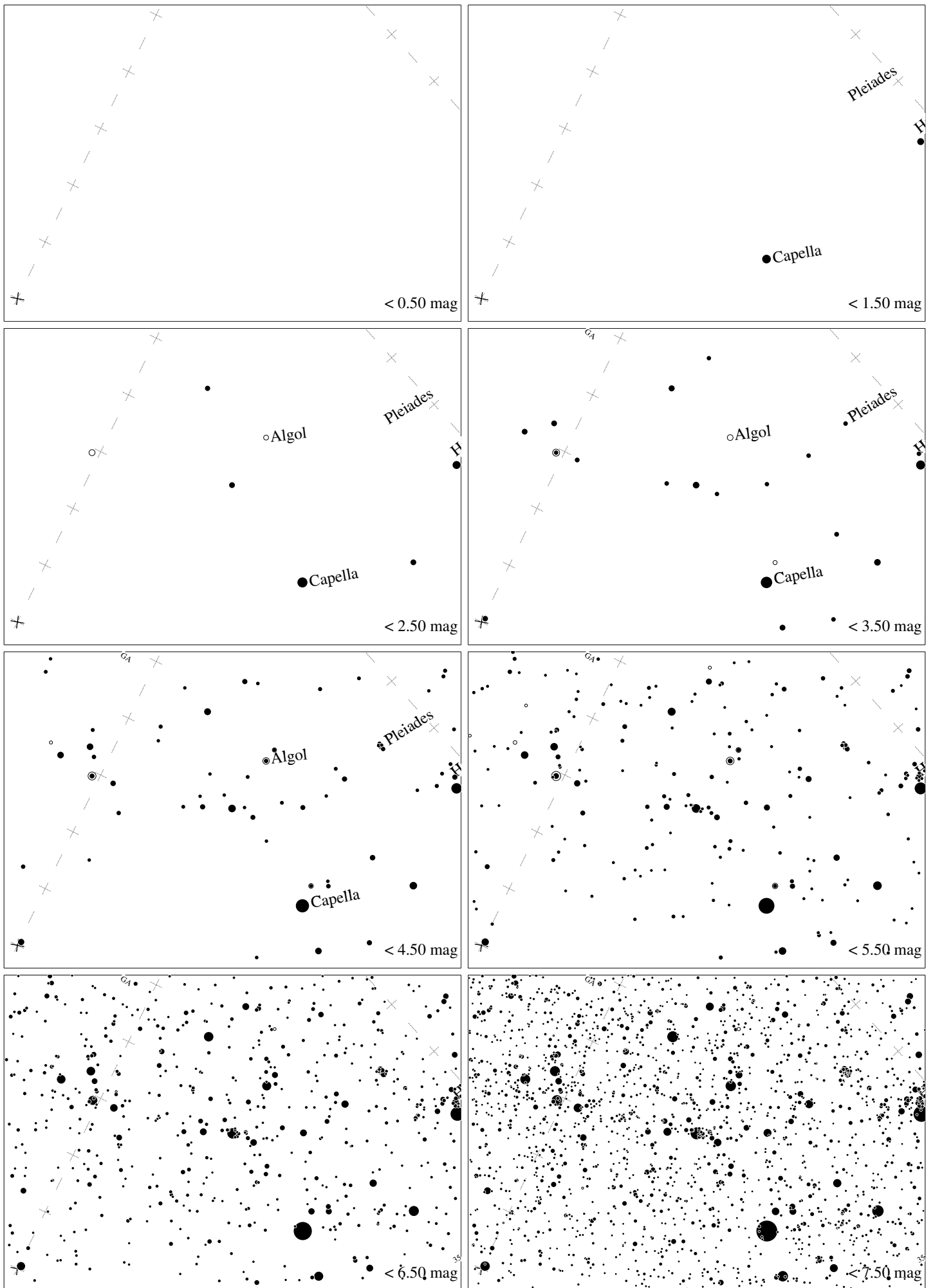
Maps for Globe at Night latitude 20° , 2019-08-26, 21 h local time (Sun at -36°), transparent air. Lines from N(E,S,W) to zenith shown (crosses each 10°). Centered on Albireo (β Cygni), 19° to the right from N, at 82° height, near the centre of Summer Triangle. Map vertical size is 50° . *Jan Hollan, CzechGlobe*



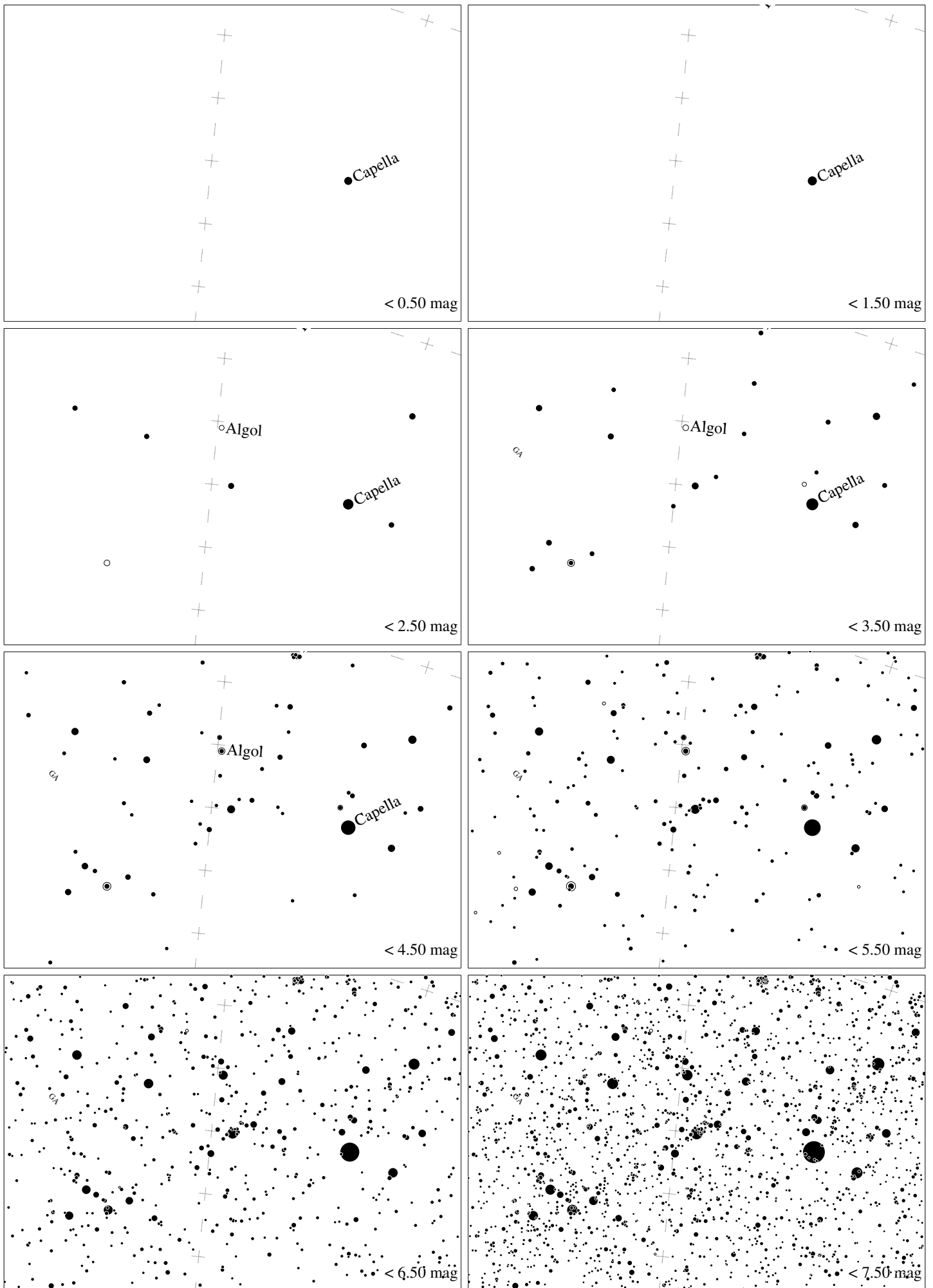
Maps for Globe at Night latitude 20° , 2019-09-24, 21 h local time (Sun at -44°), transparent air. Lines from N(E,S,W) to zenith shown (crosses each 10°). Centered on Albireo (β Cygni), 66° to the left from N, at 65° height, near the centre of Summer Triangle. Map vertical size is 50° . *Jan Hollan, CzechGlobe*



Maps for Globe at Night latitude 20° , 2019-10-23, 21 h local time (Sun at -50°), transparent air. Lines from N(E,S,W) to zenith shown (crosses each 10°). The map is centered on Markab (α Pegasi), which is 7° to the right from S, at 85° height. Detailed maps 50° vertically, the first four maps 100° . *Jan Hollan, CzechGlobe*



Maps for Globe at Night latitude 20° , 2019-11-22, 21 h local time (Sun at -51°), transparent air. Lines from N(E,S,W) to zenith shown (crosses each 10°). Centered at Mirfak (α Persei), 34° to the right from N, at 49° height. The brightest star is Capella. Map vertical size 50° . *Jan Hollan, CzechGlobe*



Maps for Globe at Night latitude 20° , 2019-12-22, 21 h local time (Sun at -48°), transparent air. Lines from N(E,S,W) to zenith shown (crosses each 10°). Centered at Mirfak (α Persei), 7° to the right from N, at 60° height. The brightest star is Capella. Map vertical size 50° . *Jan Hollan, CzechGlobe*