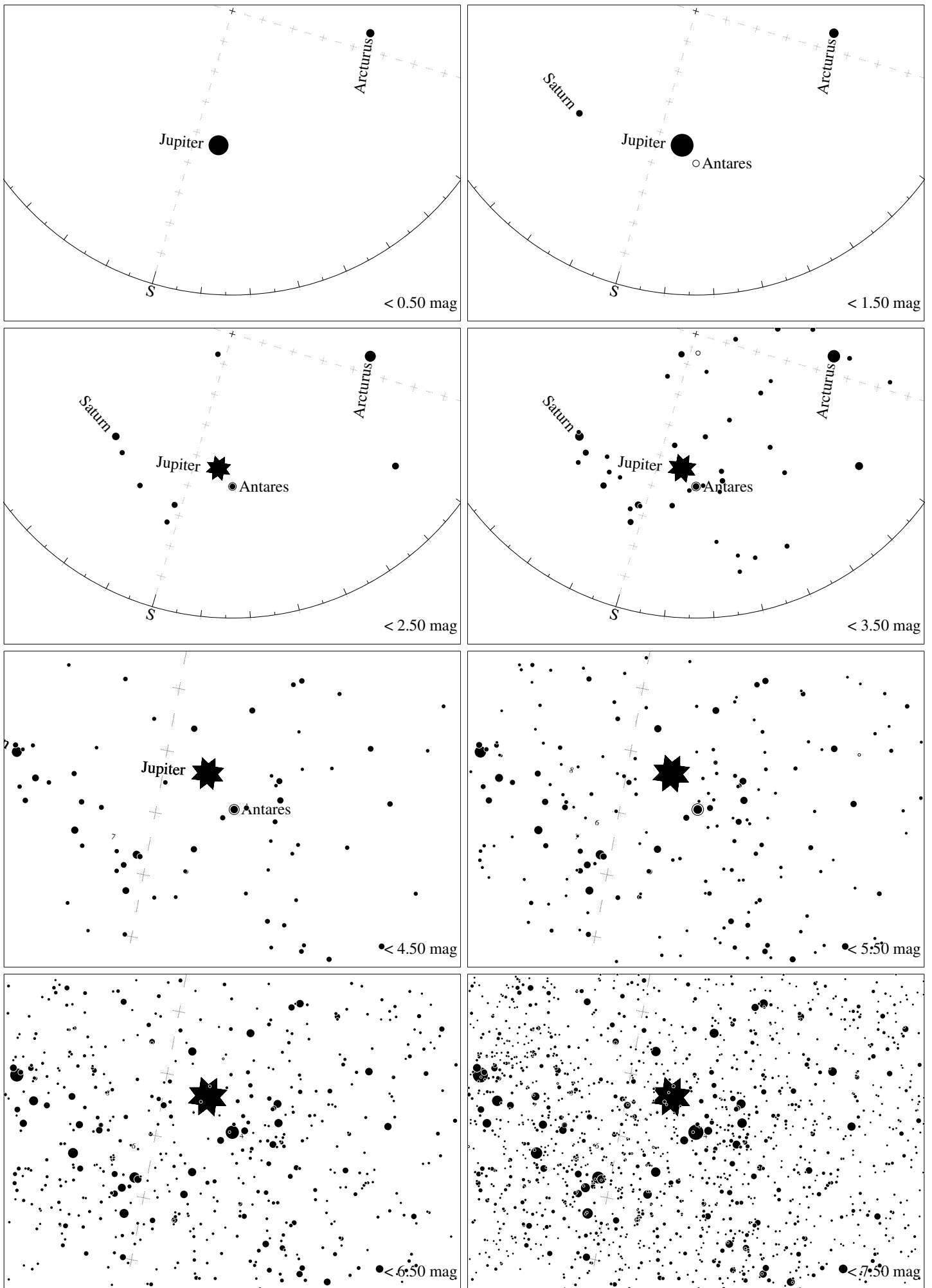


Maps for Globe at Night latitude 20° , 2019-06-28, 21 h local time (Sun at -28°), transparent air. Lines from N(E,S,W) to zenith shown (crosses each 10°). Centered on Antares (α Scorpii), which is 19° to the left from S, at 41° height. Detailed maps 50° vertically, the first four maps 100° . *Jan Hollan, CzechGlobe*



Maps for Globe at Night latitude 20°, 2019-07-28, 21 h local time (Sun at -30°), transparent air. Lines from N(E,S,W) to zenith shown (crosses each 10°). Centered on Antares (α Scorpii), which is 16° to the right from S, at 42° height. Detailed maps 50° vertically, the first four maps 100°. *Jan Hollan, CzechGlobe*