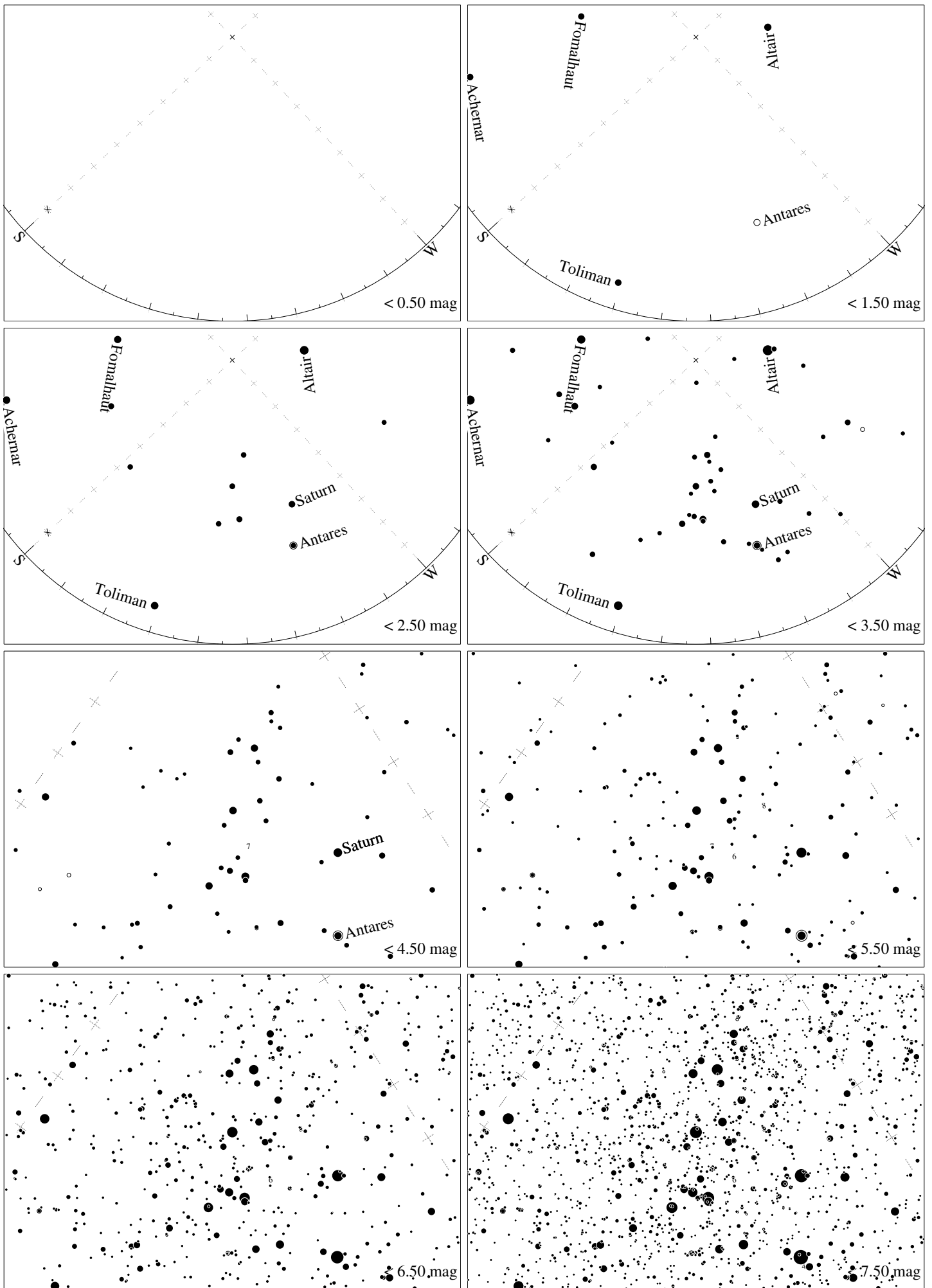


Maps for Globe at Night latitude -10° , 2017-08-19, 21 h local time (Sun at -45°), transparent air. Lines from N(E,S,W) to zenith shown (crosses each 10°). Centered on Kaus Australis (ϵ Sagittarii), which is 14° to the right from S, at 65° height. Detailed maps 50° vertically, the first four maps 100° . *Jan Hollan, CzechGlobe*



Maps for Globe at Night latitude -10° , 2017-09-16, 21 h local time (Sun at -46°), transparent air. Lines from N(E,S,W) to zenith shown (crosses each 10°). Centered on Kaus Australis (ϵ Sagittarii), which is 47° to the right from S, at 50° height. Detailed maps 50° vertically, the first four maps 100° . *Jan Hollan, CzechGlobe*