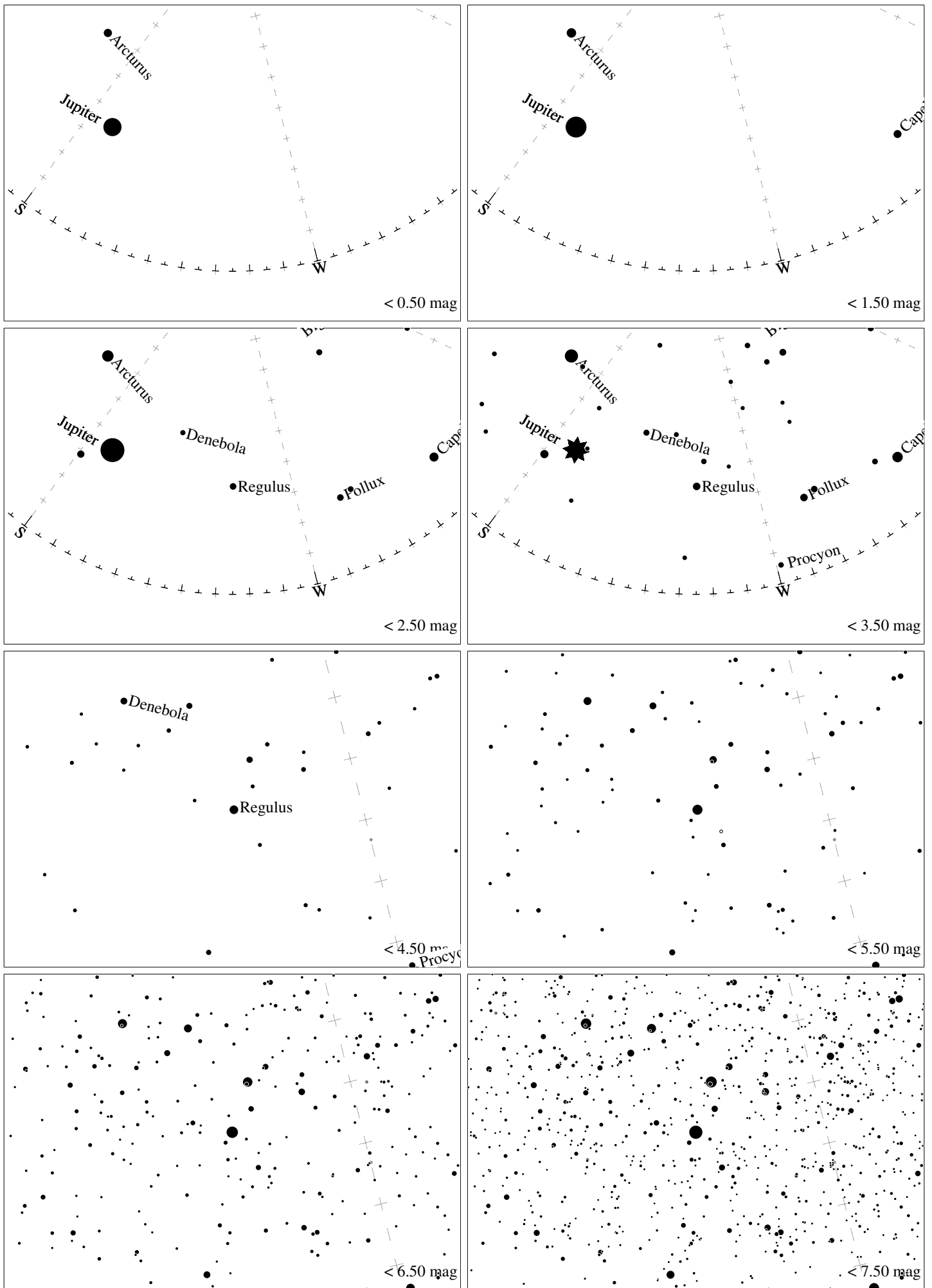
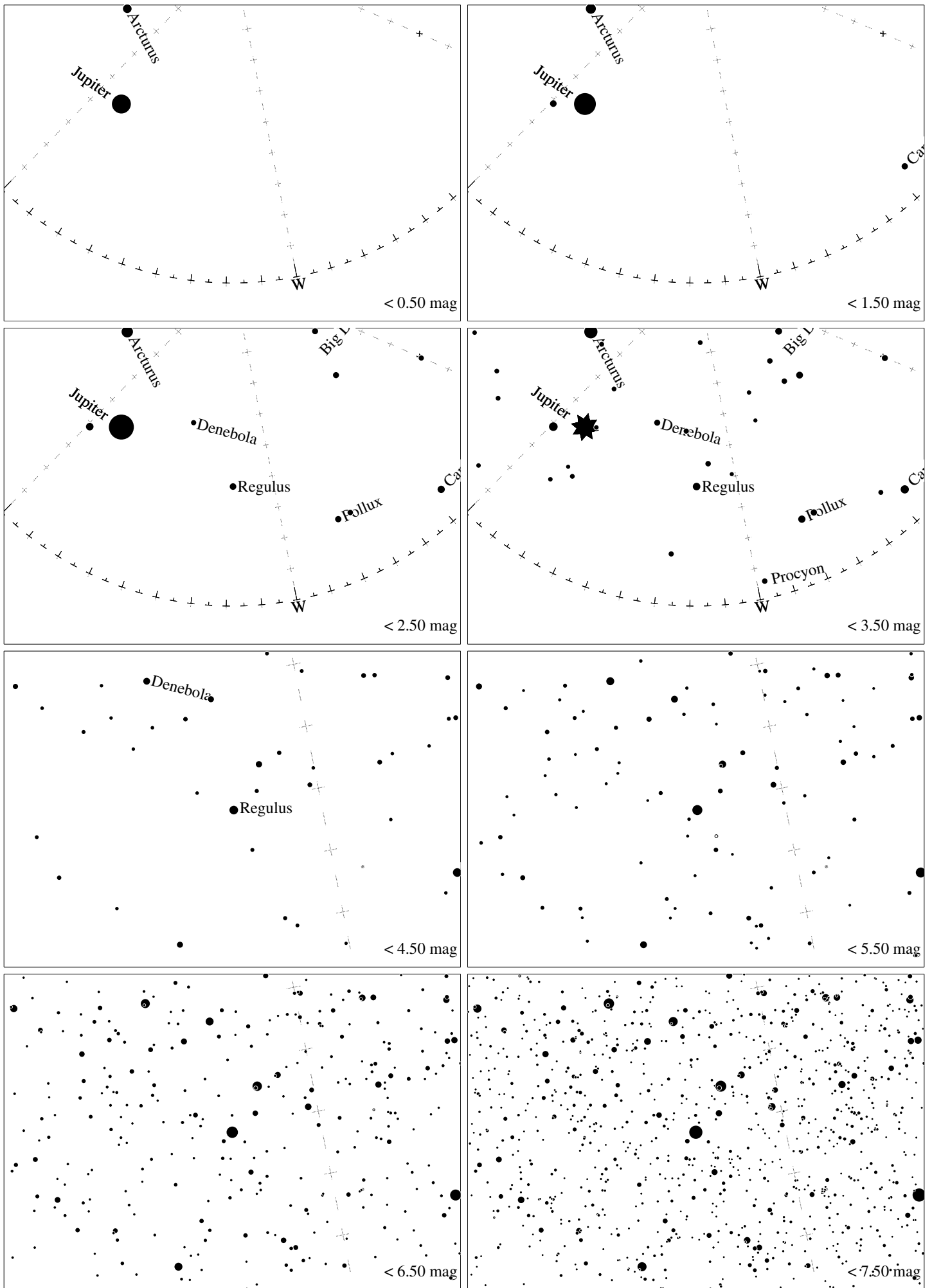


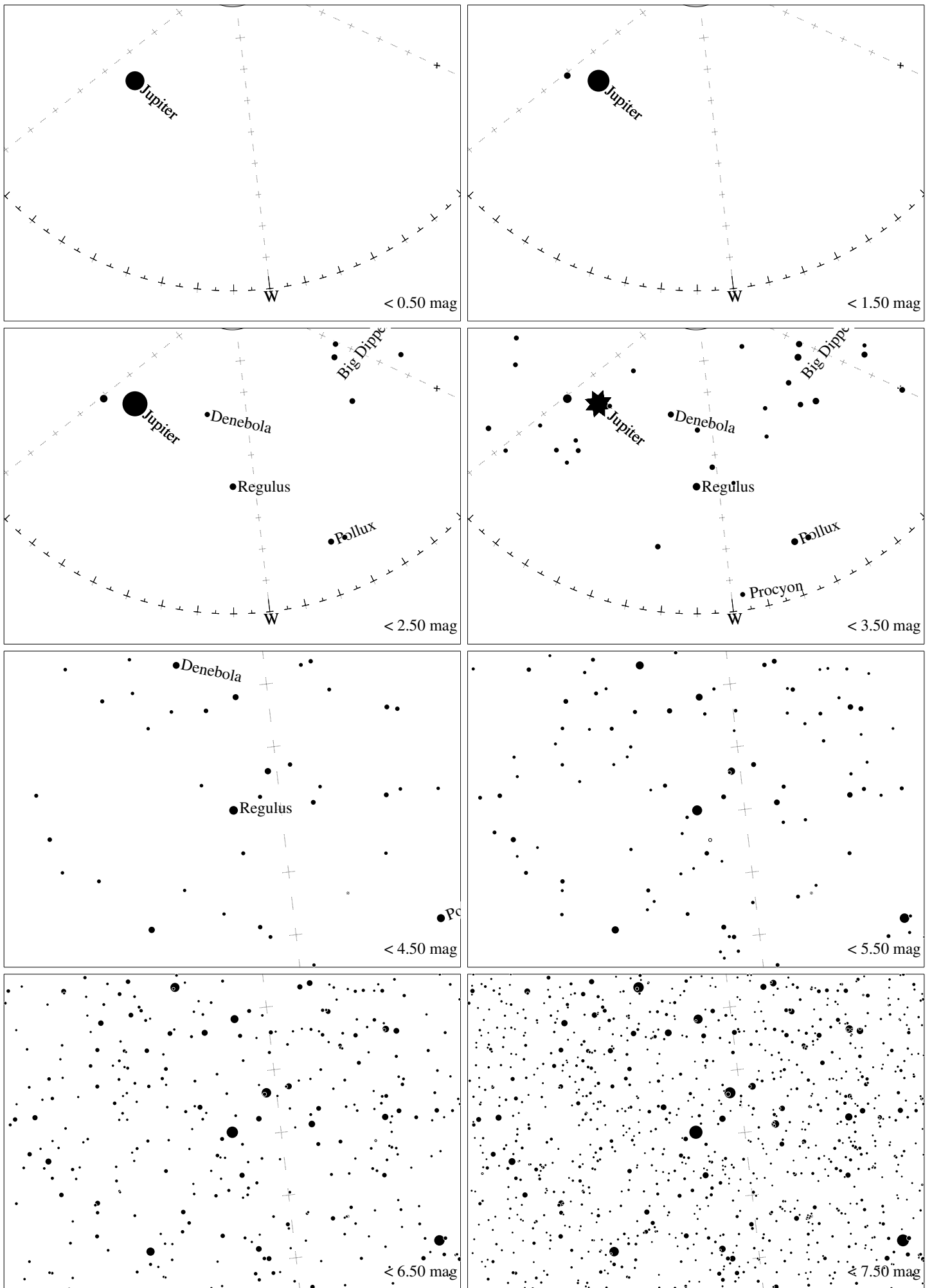
Maps for Globe at Night at latitude 60° , 2017-05-21, 21:30 local time (Sun at -4°), transparent air. Lines from N(E,S,W) to zenith shown (crosses each 10°). Regulus (α Leonis) is 59° to the right from S, at 30° height. Detailed maps 50° vertically, the first four maps 100° . *Jan Hollan, CzechGlobe*



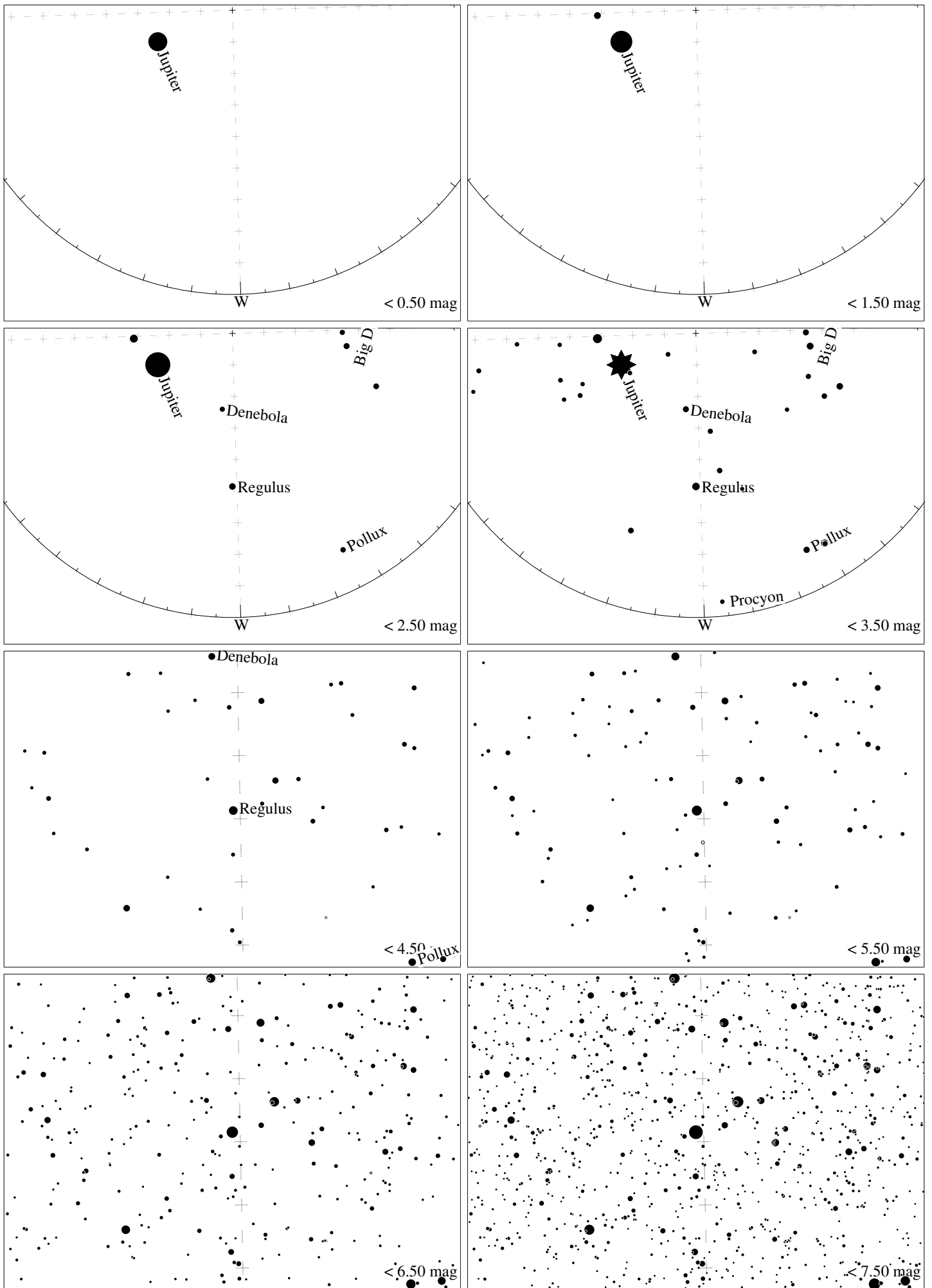
Maps for Globe at Night at latitude 50° , 2017-05-21, 21:30 local time (Sun at -12°), transparent air. Lines from N(E,S,W) to zenith shown (crosses each 10°). Regulus (α Leonis) is 65° to the right from S, at 34° height. Detailed maps 50° vertically, the first four maps 100° . *Jan Hollan, CzechGlobe*



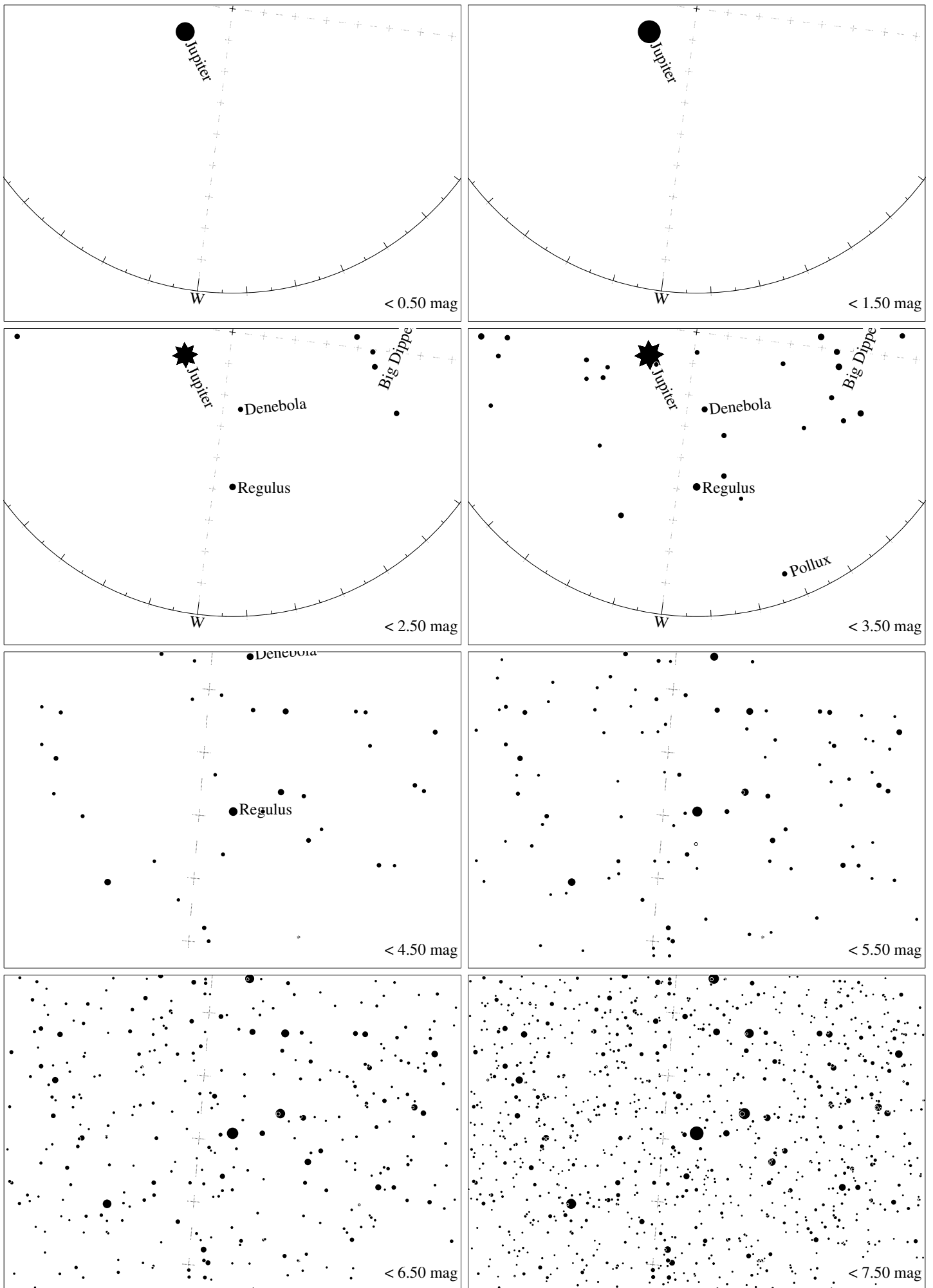
Maps for Globe at Night at latitude 40° , 2017-05-21, 21:30 local time (Sun at -21°), transparent air. Lines from N(E,S,W) to zenith shown (crosses each 10°). Regulus (α Leonis) is 72° to the right from S, at 38° height. Detailed maps 50° vertically, the first four maps 100° . *Jan Hollan, CzechGlobe*



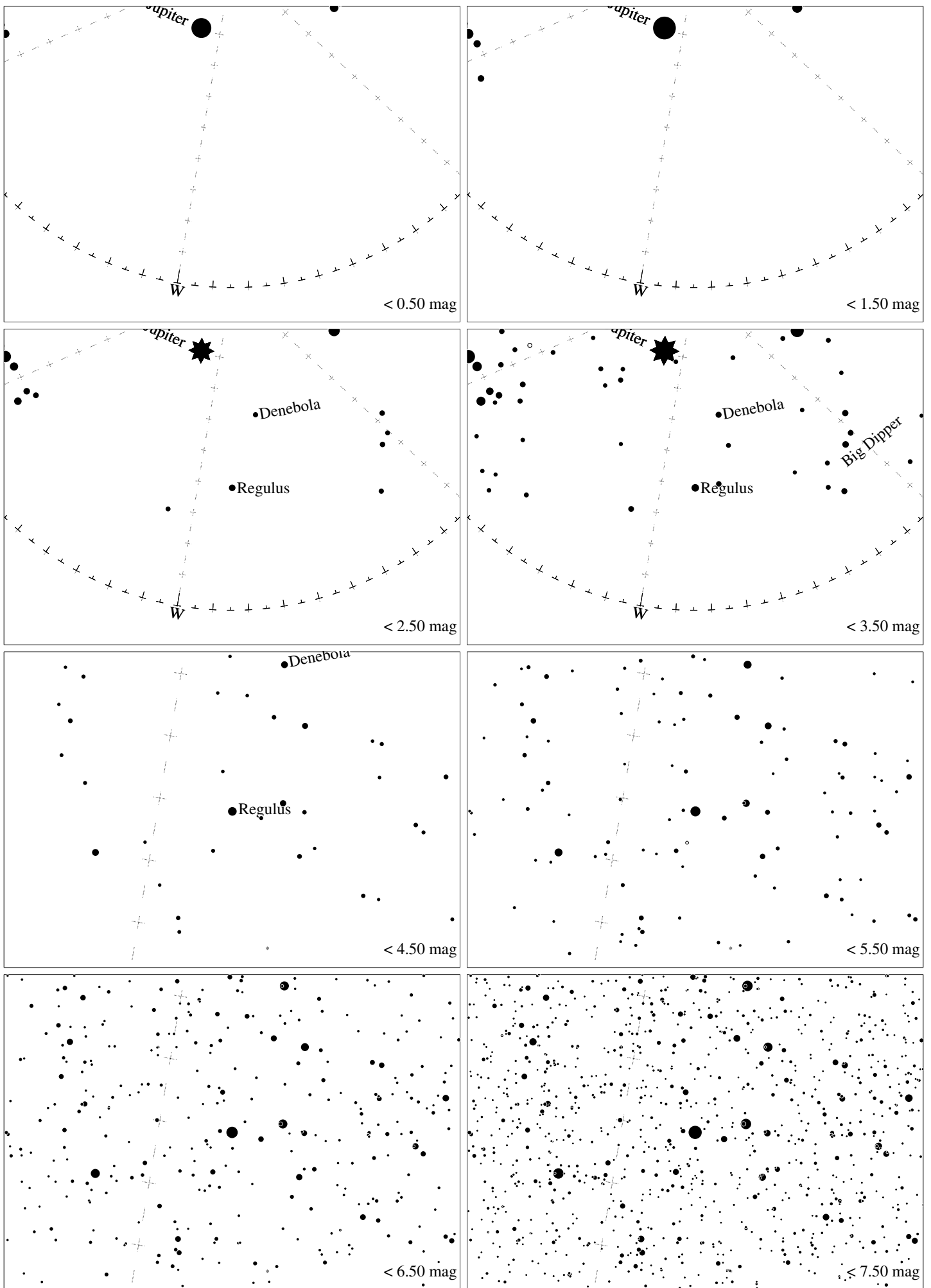
Maps for Globe at Night at latitude 30° , 2017-05-21, 21:30 local time (Sun at -28°), transparent air. Lines from N(E,S,W) to zenith shown (crosses each 10°). Regulus (α Leonis) is 80° to the right from S, at 40° height. Detailed maps 50° vertically, the first four maps 100° . *Jan Hollan, CzechGlobe*



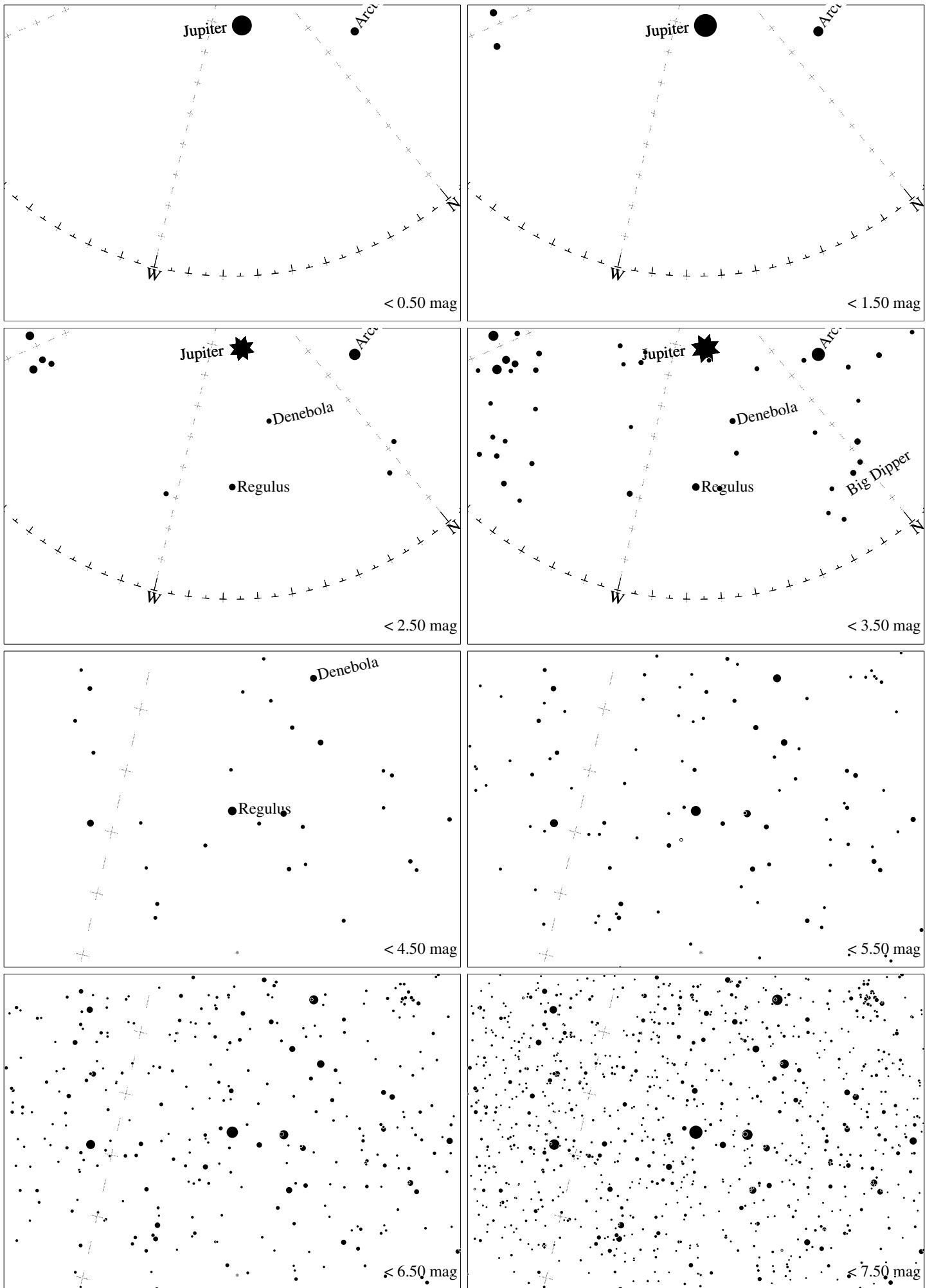
Maps for Globe at Night at latitude 20° , 2017-05-21, 21:30 local time (Sun at -36°), transparent air. Lines from N(E,S,W) to zenith shown (crosses each 10°). Regulus (α Leonis) is 88° to the right from S, at 42° height. Detailed maps 50° vertically, the first four maps 100° . *Jan Hollan, CzechGlobe*



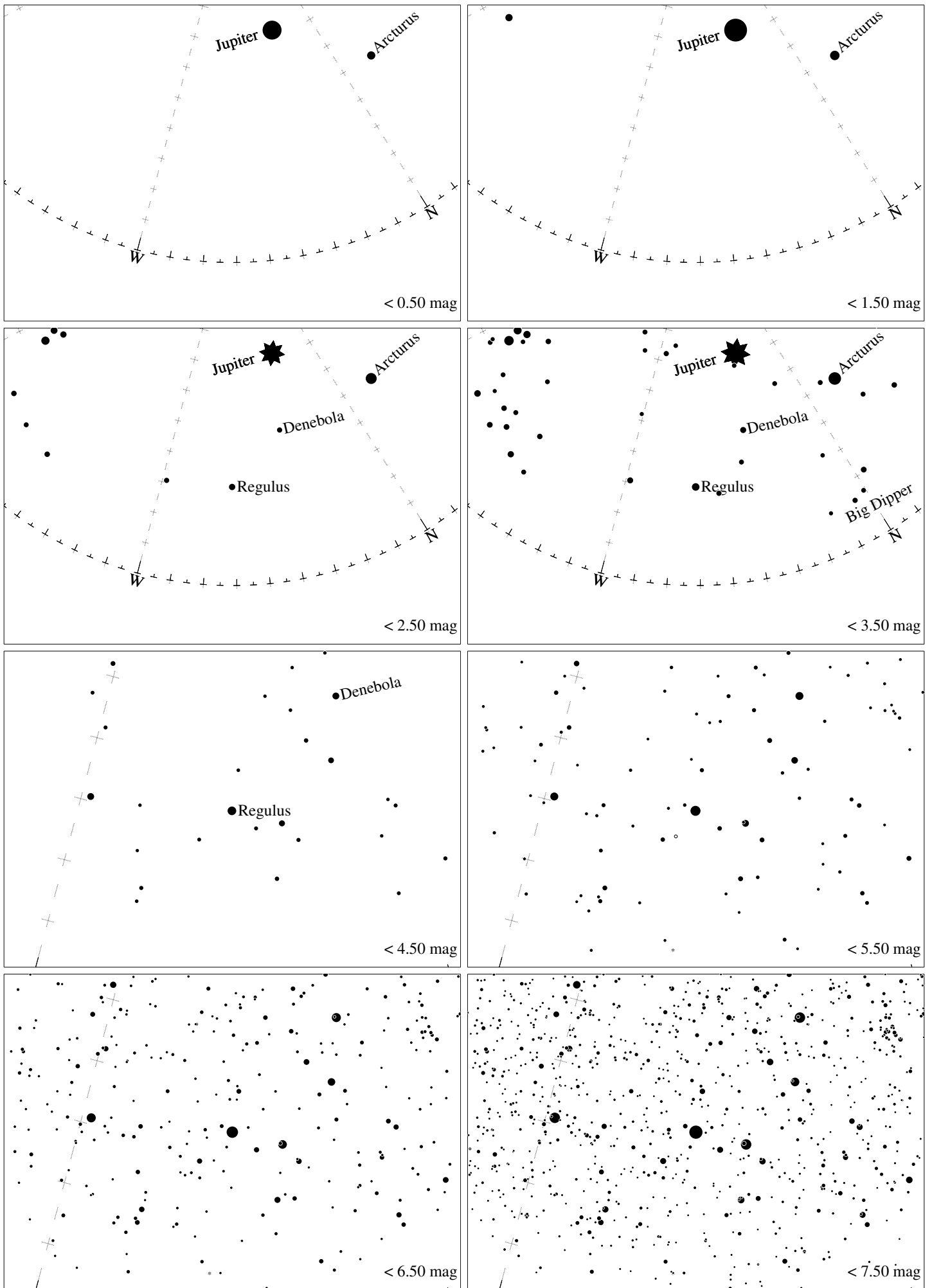
Maps for Globe at Night at latitude 10° , 2017-05-21, 21:30 local time (Sun at -43°), transparent air. Lines from N(E,S,W) to zenith shown (crosses each 10°). Regulus (α Leonis) is 83° to the left from N, at 41° height. Detailed maps 50° vertically, the first four maps 100° . *Jan Hollan, CzechGlobe*



Maps for Globe at Night at latitude 0° , 2017-05-21, 21:30 local time (Sun at -49°), transparent air. Lines from N(E,S,W) to zenith shown (crosses each 10°). Regulus (α Leonis) is 75° to the left from N, at 39° height. Detailed maps 50° vertically, the first four maps 100° . *Jan Hollan, CzechGlobe*



Maps for Globe at Night at latitude -10° , 2017-05-21, 21:30 local time (Sun at -53°), transparent air. Lines from N(E,S,W) to zenith shown (crosses each 10°). Regulus (α Leonis) is 67° to the left from N, at 36° height. Detailed maps 50° vertically, the first four maps 100° . *Jan Hollan, CzechGlobe*



Maps for Globe at Night at latitude -20° , 2017-05-21, 21:30 local time (Sun at -56°), transparent air. Lines from N(E,S,W) to zenith shown (crosses each 10°). Regulus (α Leonis) is 61° to the left from N, at 32° height. Detailed maps 50° vertically, the first four maps 100° . Jan Hollan, CzechGlobe