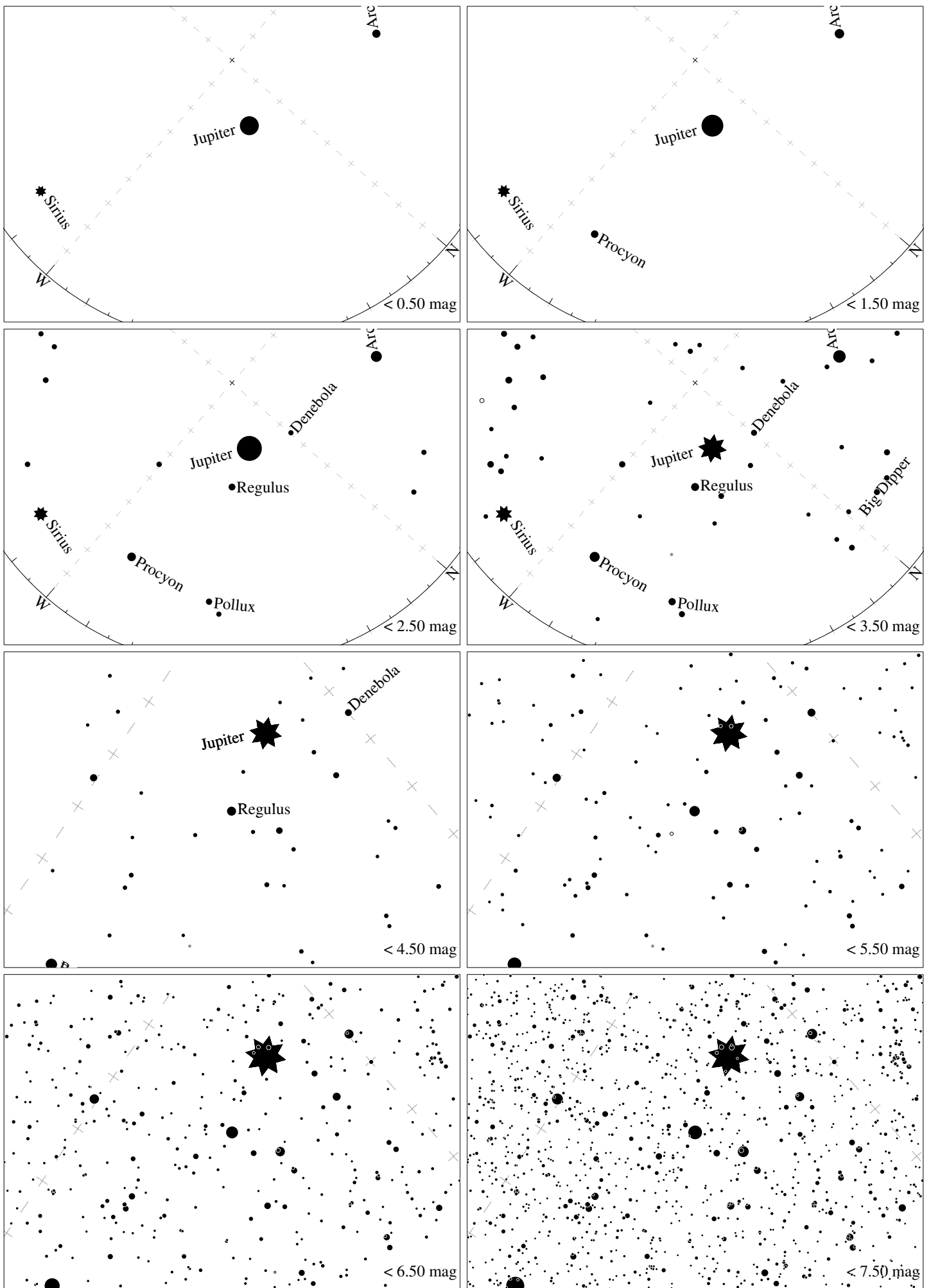
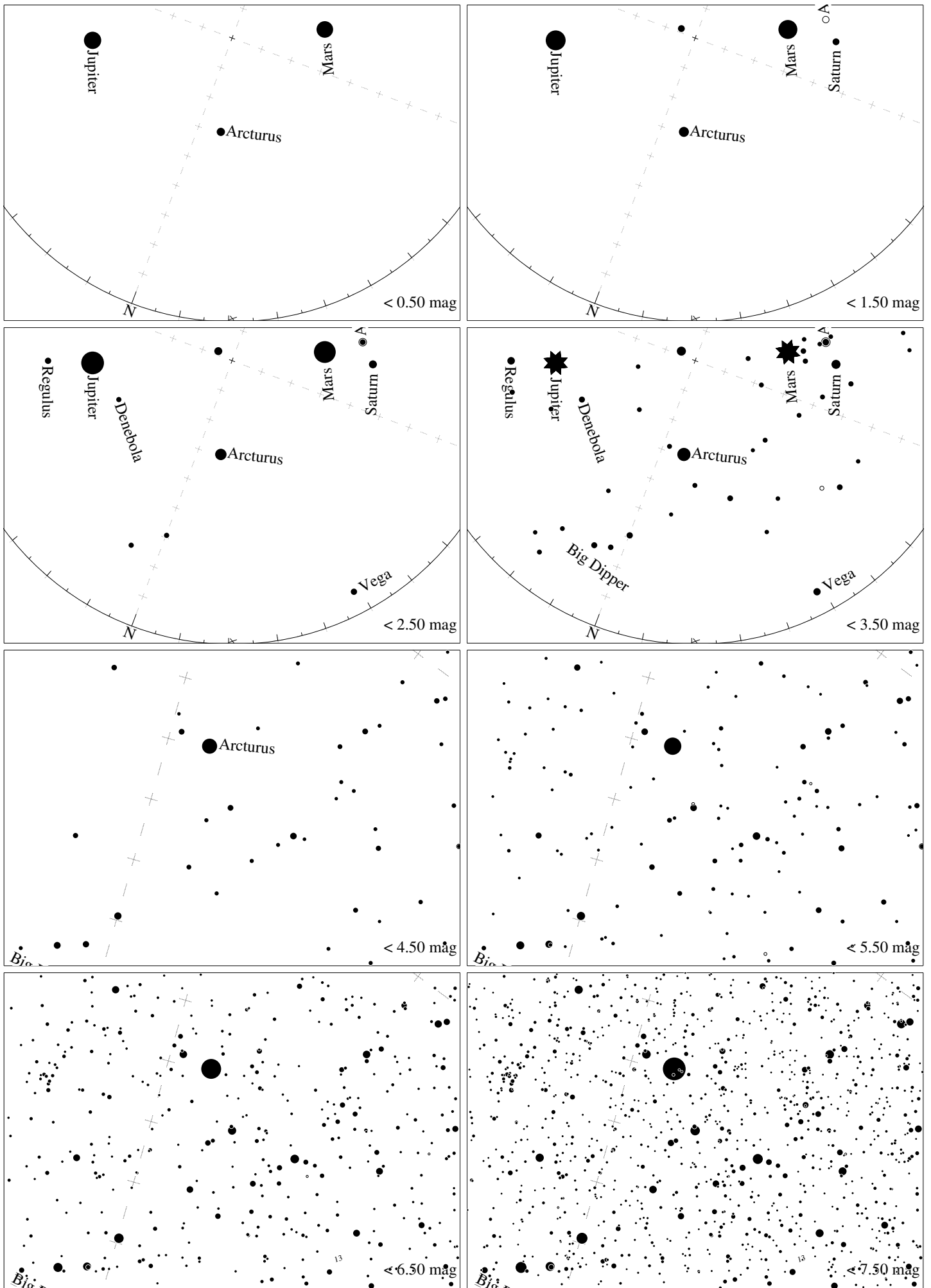


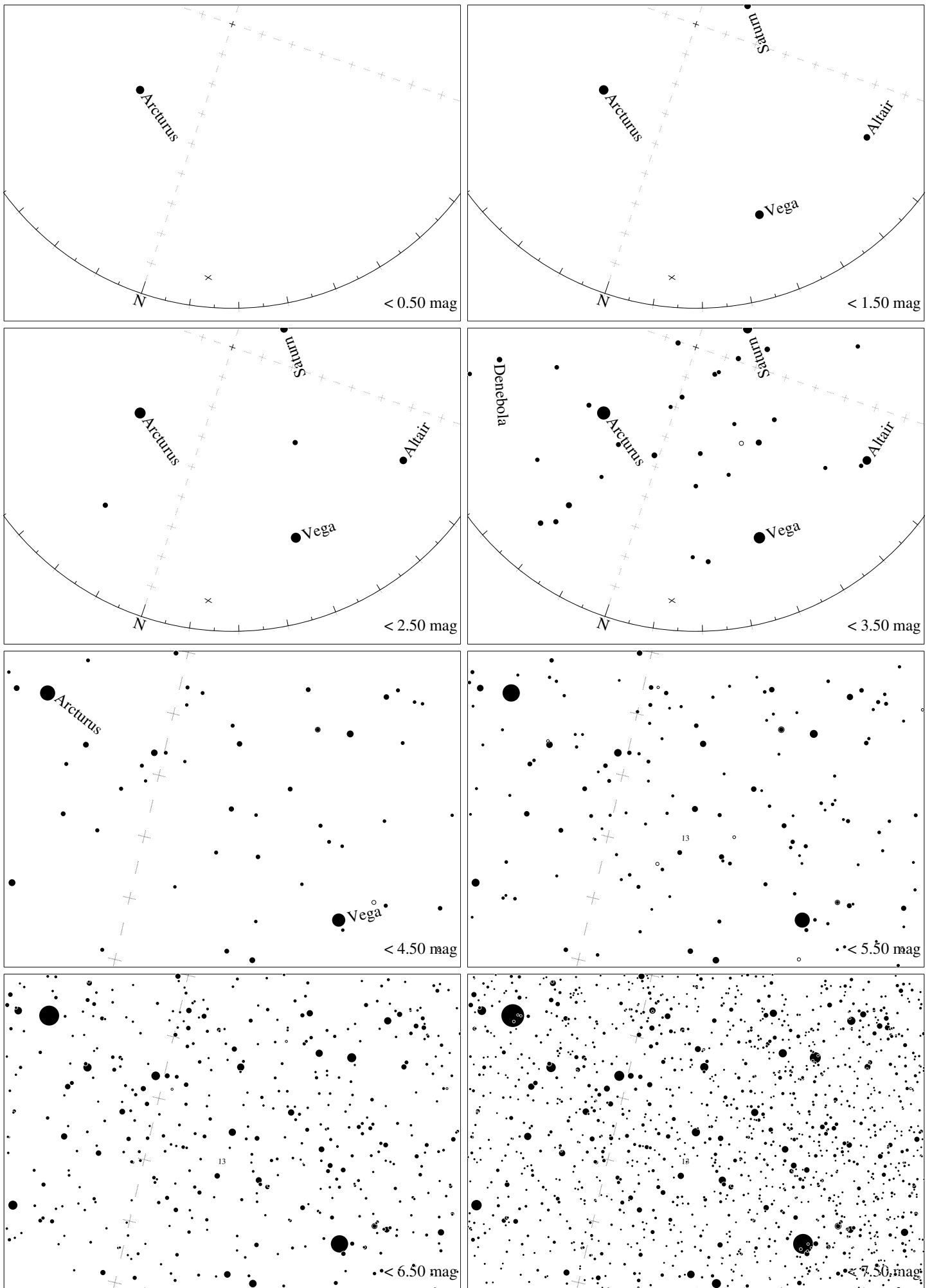
Maps for Globe at Night at latitude -10° , 2016-04-03, 21 h local time (Sun at -44°), transparent air. Lines from N(E,S,W) to zenith shown (crosses each 10°). Regulus (α Leonis) is 12° to the right from N, at 68° height. Detailed maps 50° vertically, the first four maps 100° . *Jan Hollan, CzechGlobe*



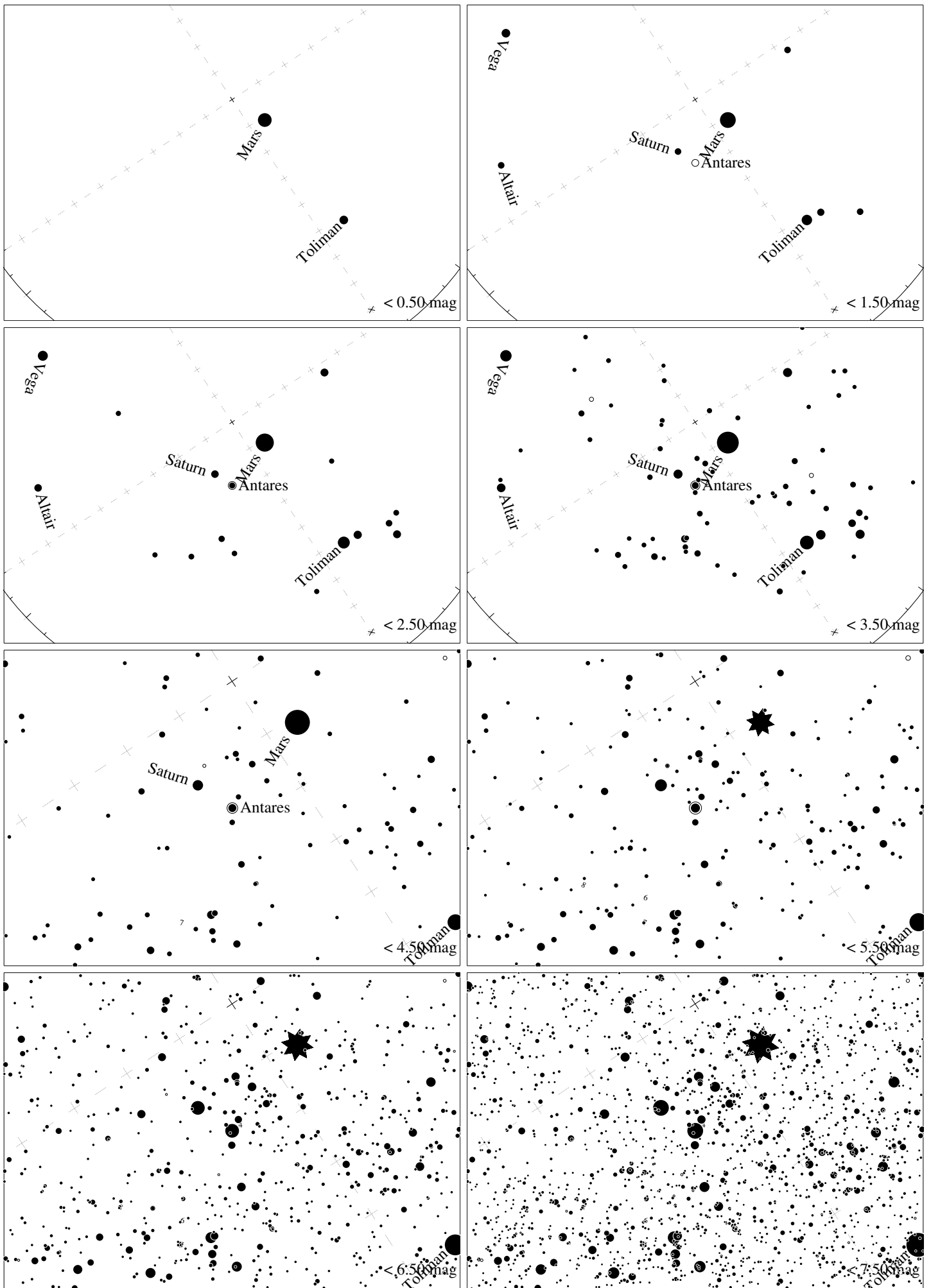
Maps for Globe at Night at latitude -10° , 2016-05-03, 21 h local time (Sun at -47°), transparent air. Lines from N(E,S,W) to zenith shown (crosses each 10°). Regulus (α Leonis) is 49° to the left from N, at 57° height. Detailed maps 50° vertically, the first four maps 100° . *Jan Hollan, CzechGlobe*



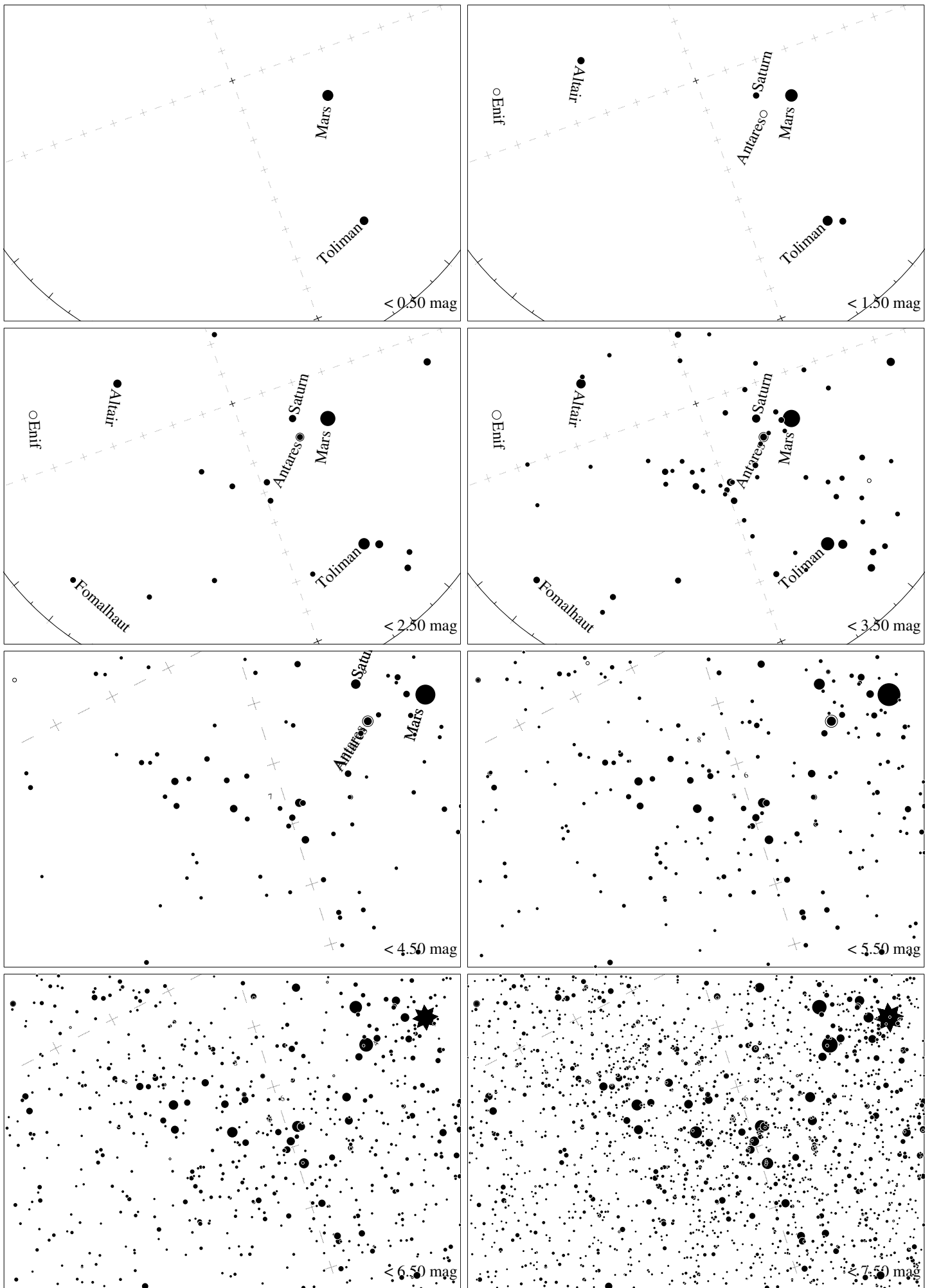
Maps for Globe at Night latitude -10° , 2016-06-02, 21 h local time (Sun at -46°), transparent air. Lines from N(E,S,W) to zenith shown (crosses each 10°). Centered on Izar (ϵ Bootis), which is 21° to the right from N, at 50° height. Detailed maps 50° vertically, the first four maps 100° . *Jan Hollan, CzechGlobe*



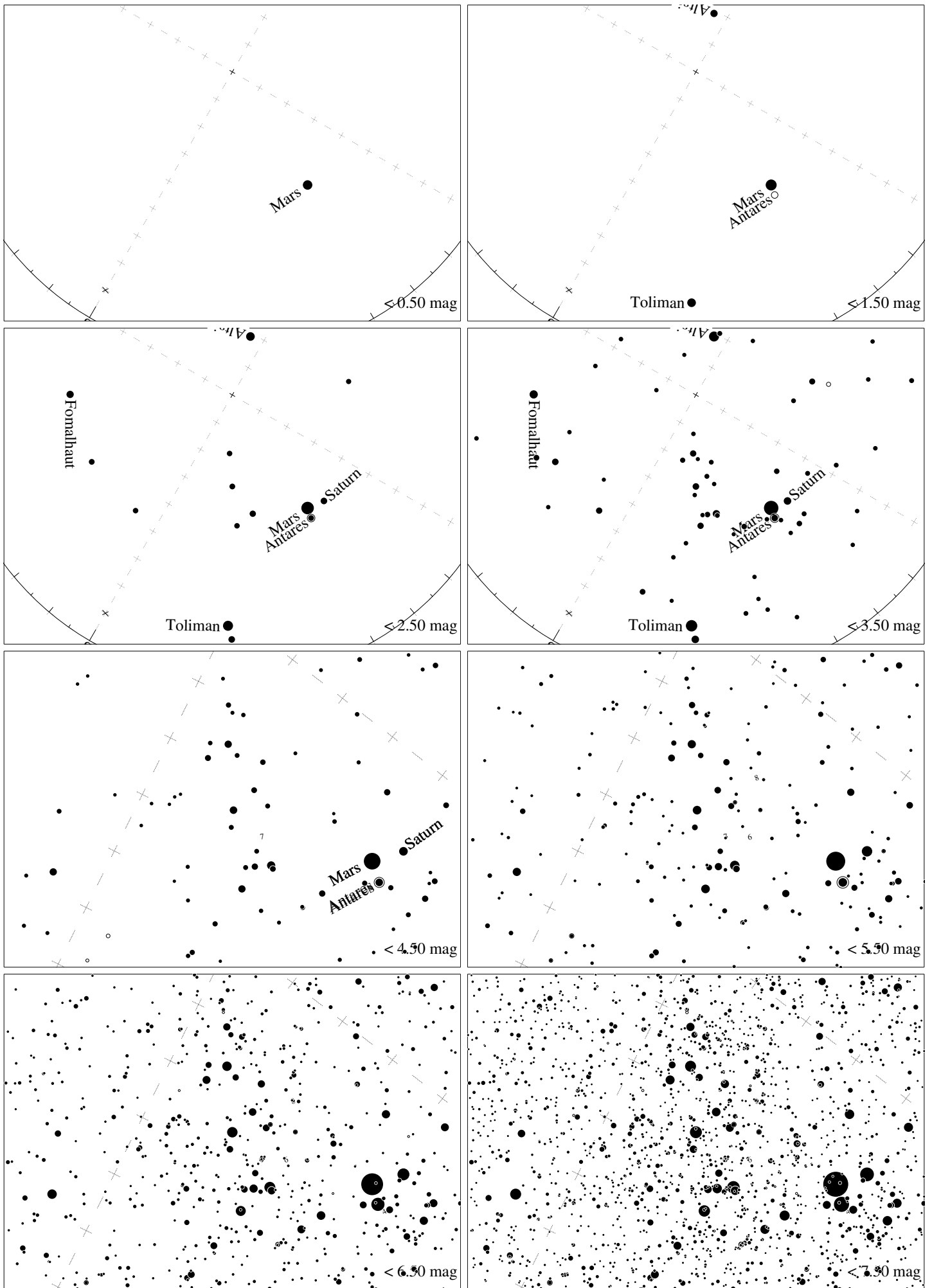
Maps for Globe at Night latitude -10° , 2016-07-01, 21 h local time (Sun at -44°), transparent air. Lines from N(E,S,W) to zenith shown (crosses each 10°). Centered on ζ Herculis, which is 19° to the right from N, at 46° height. Detailed maps 50° vertically, the first four maps 100° . *Jan Hollan, CzechGlobe*



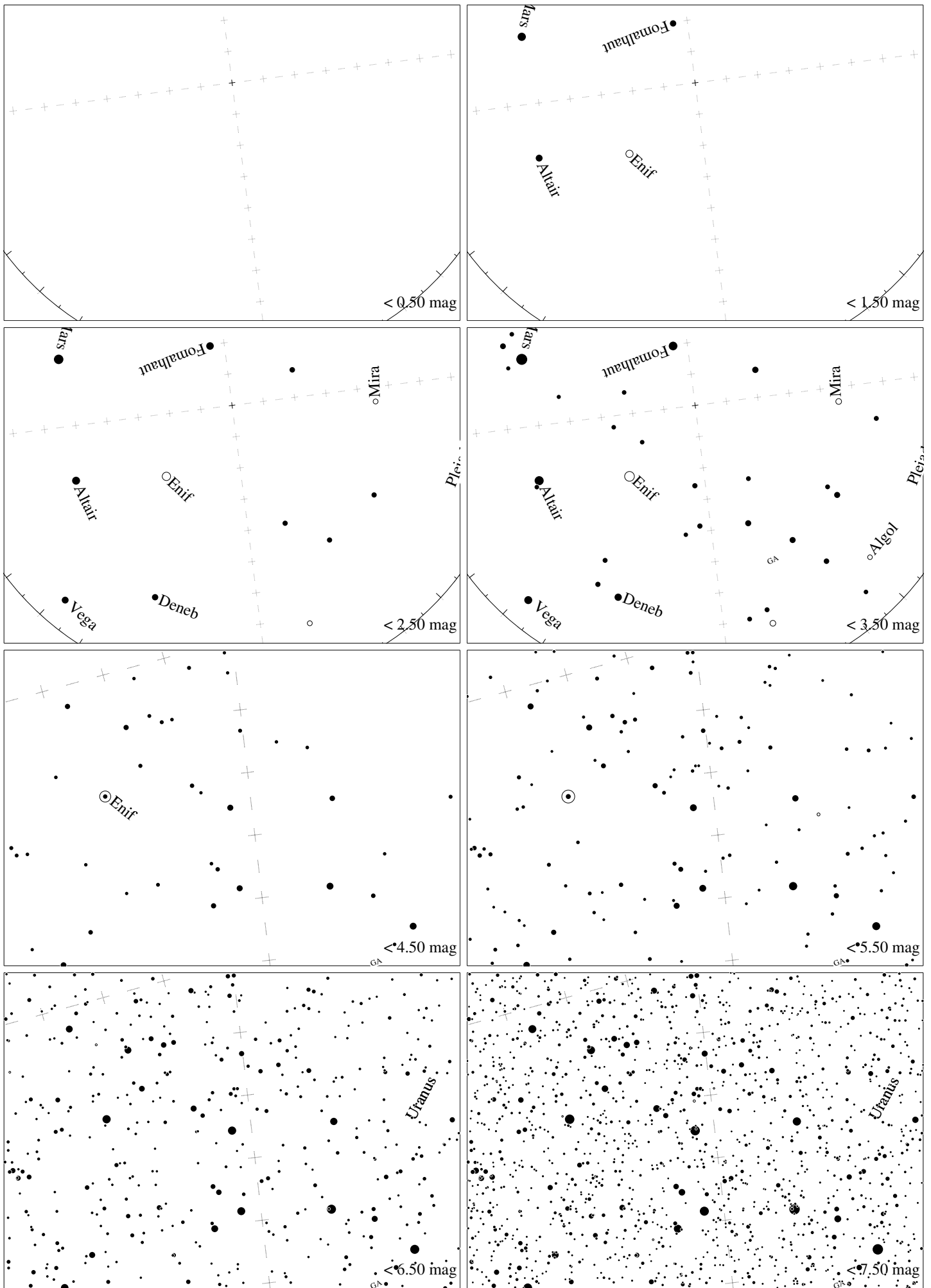
Maps for Globe at Night latitude -10° , 2016-07-01, 21 h local time (Sun at -44°), transparent air. Lines from N(E,S,W) to zenith shown (crosses each 10°). Centered on Antares (α Scorpii), which is 34° to the left from S, at 70° height. Detailed maps 50° vertically, the first four maps 100° . *Jan Hollan, CzechGlobe*



Maps for Globe at Night latitude -10° , 2016-08-01, 21 h local time (Sun at -44°), transparent air. Lines from N(E,S,W) to zenith shown (crosses each 10°). Centered on Kaus Australis (ϵ Sagittarii), which is 20° to the left from S, at 64° height. Detailed maps 50° vertically, the first four maps 100° . *Jan Hollan, CzechGlobe*



Maps for Globe at Night latitude -10° , 2016-08-29, 21 h local time (Sun at -46°), transparent air. Lines from N(E,S,W) to zenith shown (crosses each 10°). Centered on Kaus Australis (ϵ Sagittarii), which is 30° to the right from S, at 61° height. Detailed maps 50° vertically, the first four maps 100° . *Jan Hollan, CzechGlobe*



Maps for Globe at Night latitude -10° , 2016-10-25, 21 h local time (Sun at -44°), transparent air. Lines from N(E,S,W) to zenith shown (crosses each 10°). The map is centered on Markab (α Pegasi), which is 7° to the left from N, at 65° height. Detailed maps 50° vertically, the first four maps 100° . Jan Hollan, CzechGlobe