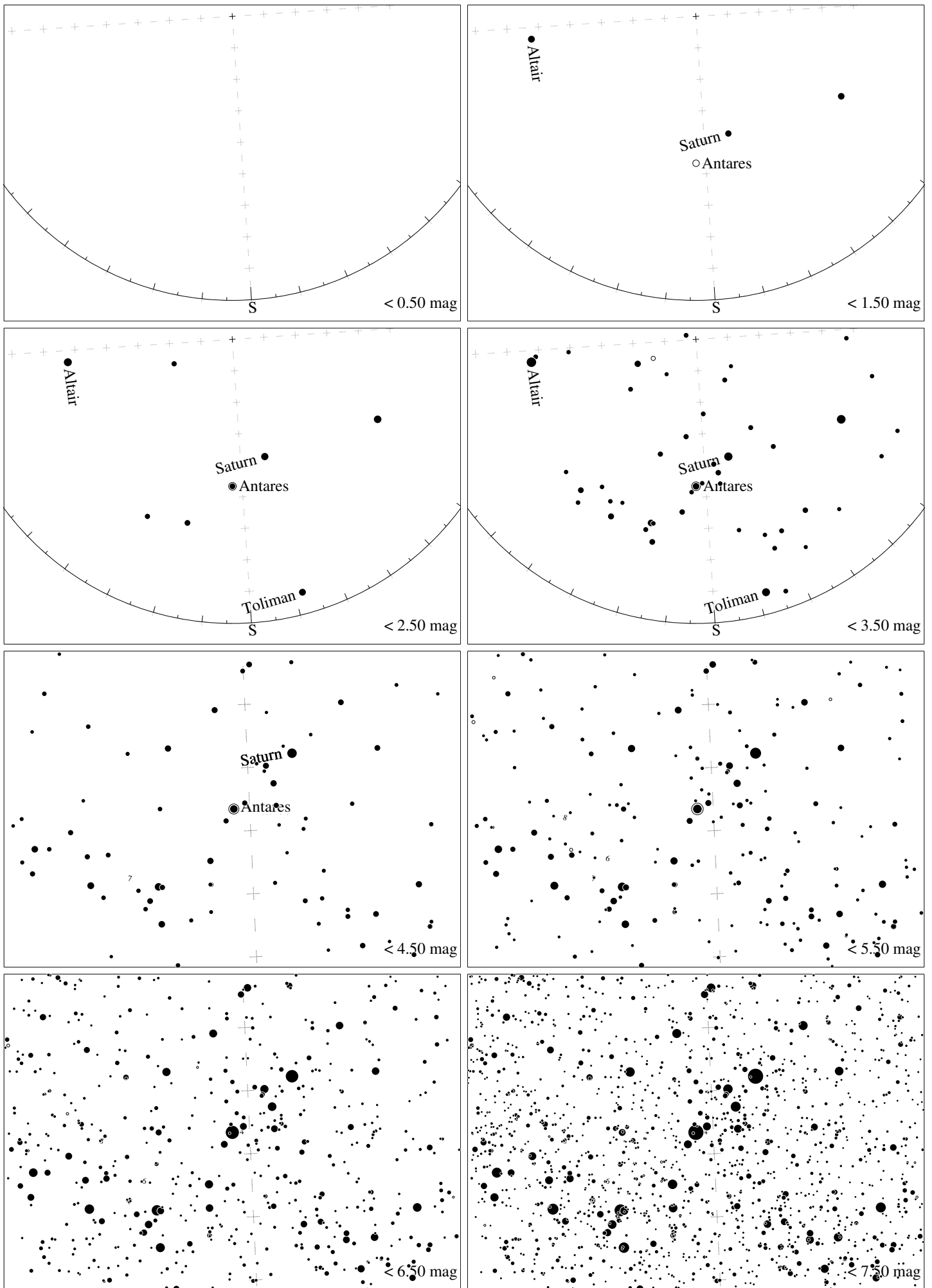


Maps for Globe at Night latitude  $20^\circ$ , 2015-06-12, 21 h local time (Sun at  $-28^\circ$ ), transparent air. Lines from N(E,S,W) to zenith shown (crosses each  $10^\circ$ ). Centered on Antares ( $\alpha$  Scorpii), which is  $35^\circ$  to the left from S, at  $34^\circ$  height. Detailed maps  $50^\circ$  vertically, the first four maps  $100^\circ$ . *Jan Hollan, CzechGlobe*



Maps for Globe at Night latitude  $20^\circ$ , 2015-07-11, 21 h local time (Sun at  $-28^\circ$ ), transparent air. Lines from N(E,S,W) to zenith shown (crosses each  $10^\circ$ ). Centered on Antares ( $\alpha$  Scorpii), which is  $4^\circ$  to the left from S, at  $43^\circ$  height. Detailed maps  $50^\circ$  vertically, the first four maps  $100^\circ$ . *Jan Hollan, CzechGlobe*