

comments:

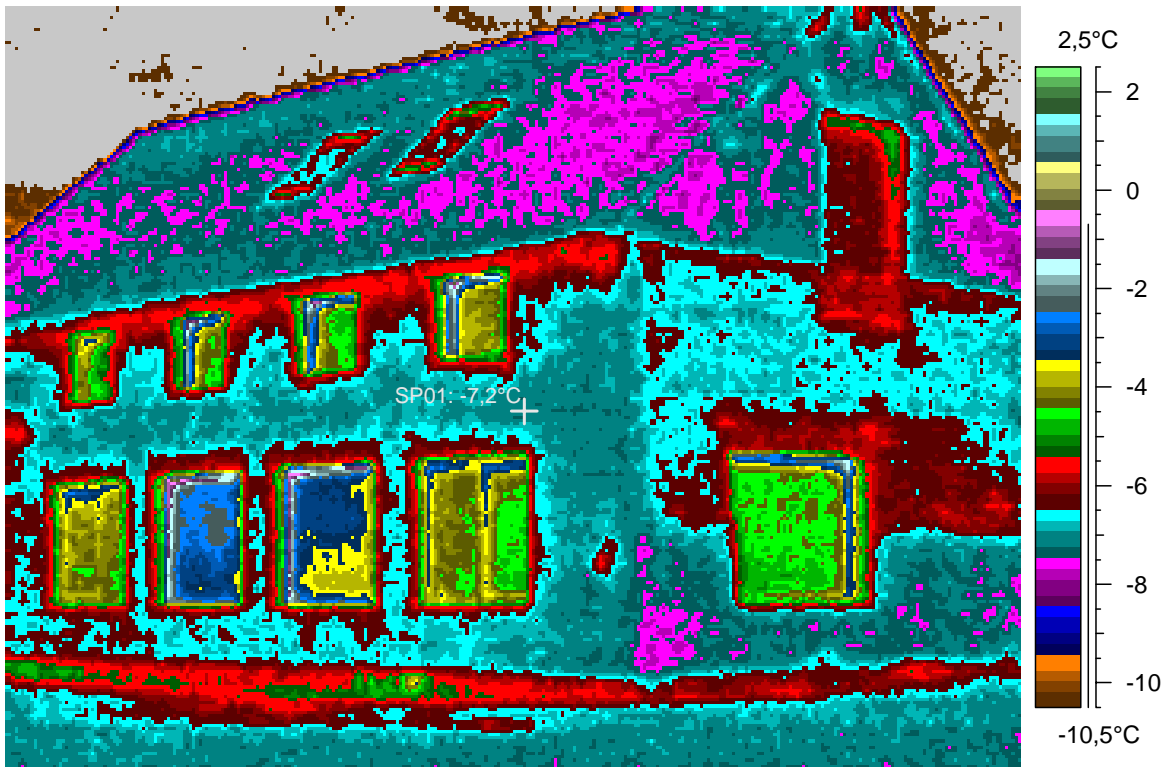
blabla

1 - Ir_1467.jpg

Label	Value
IR : max	0,0°C
IR : min	*-20,2°C
SP01	-7,2°C

4.1.2008

1:48:13



comments:

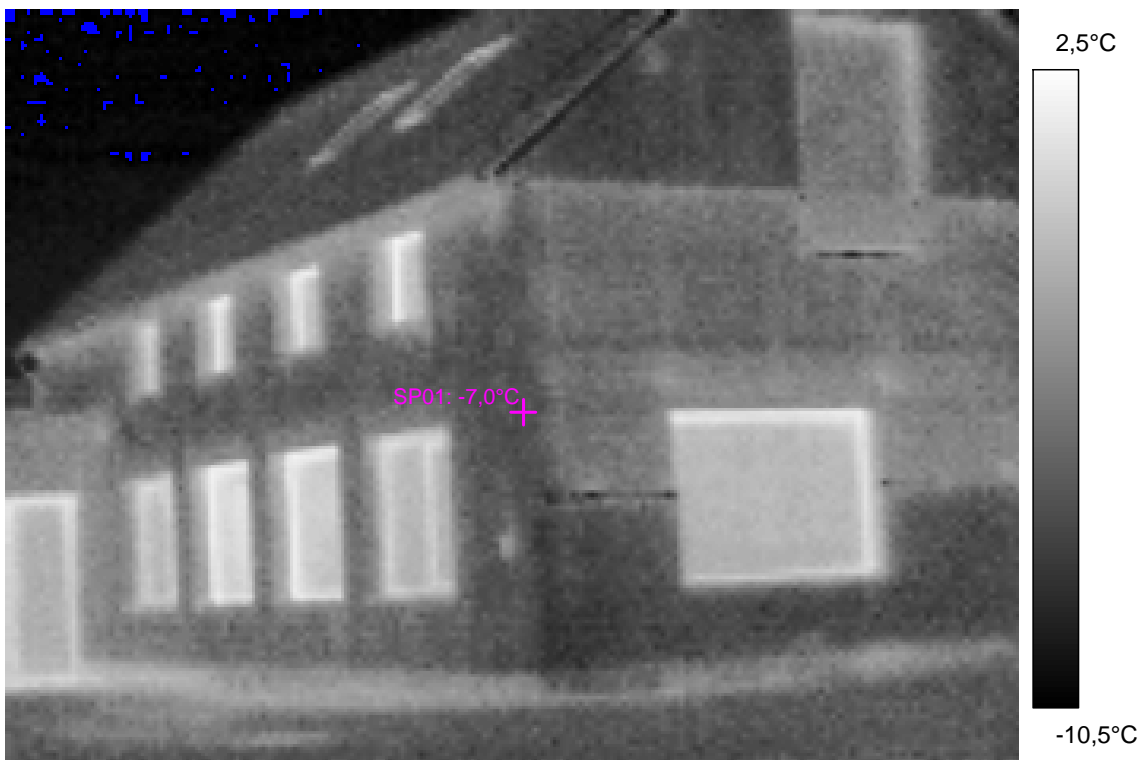
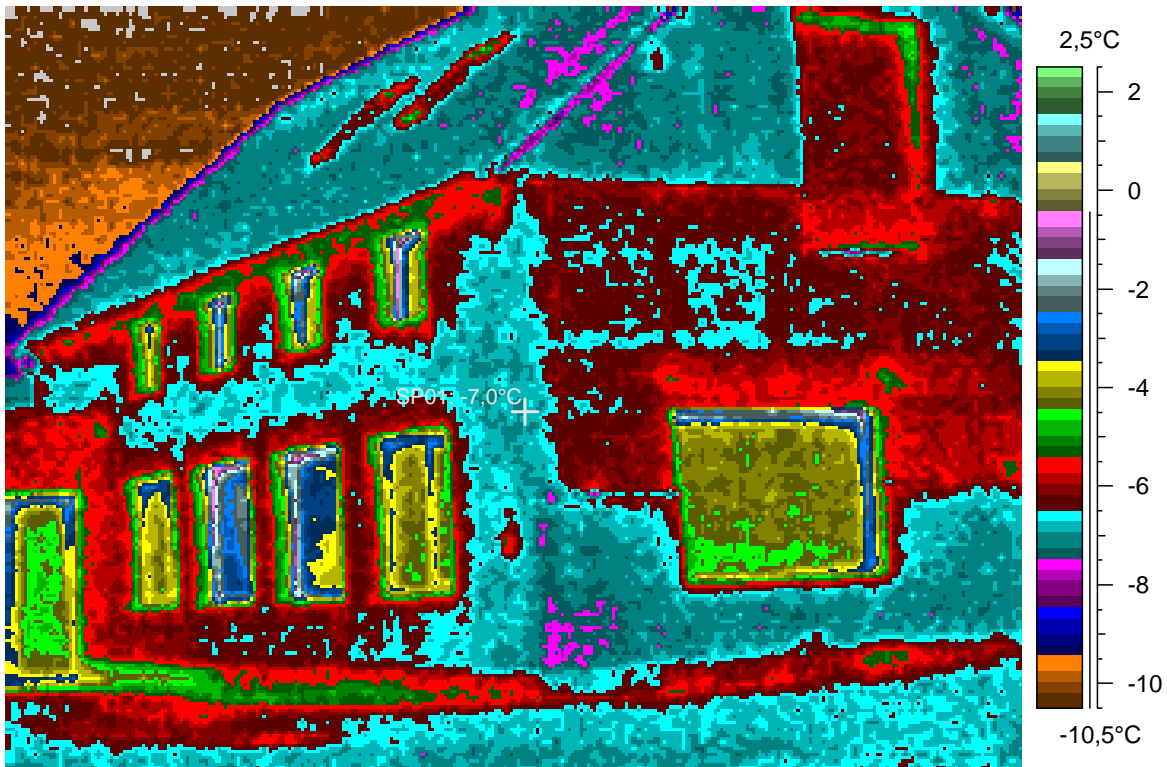
blabla

2 - Ir_1468.jpg

Label	Value
IR : max	0,1°C
IR : min	-10,9°C
SP01	-7,0°C

4.1.2008

1:48:32



comments:

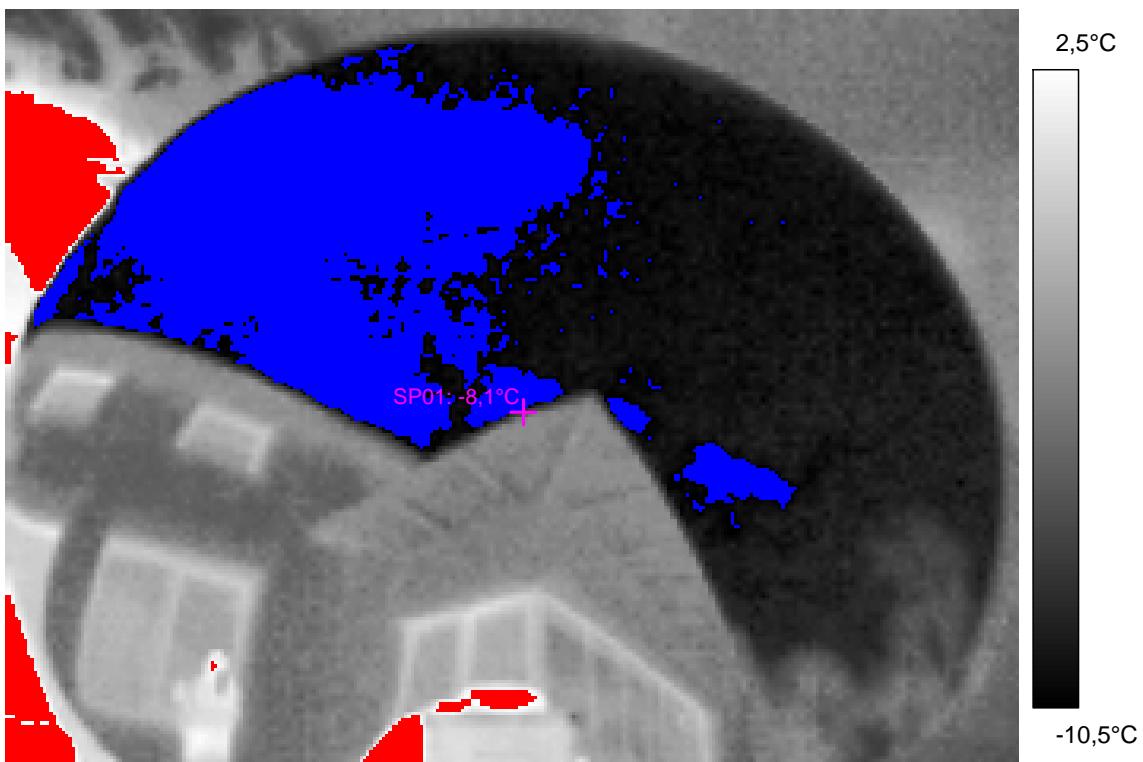
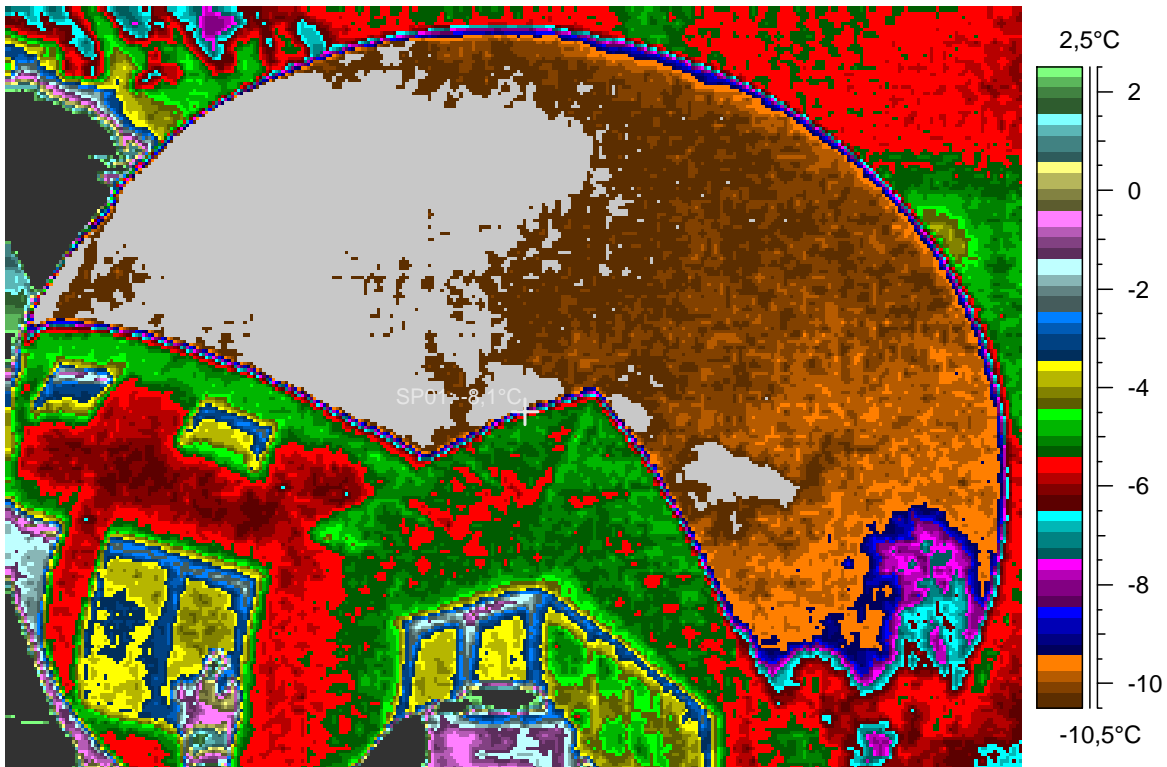
blabla

3 - Ir_1469.jpg

Label	Value
IR : max	21,8°C
IR : min	*-27,1°C
SP01	-8,1°C

4.1.2008

1:49:53



comments:

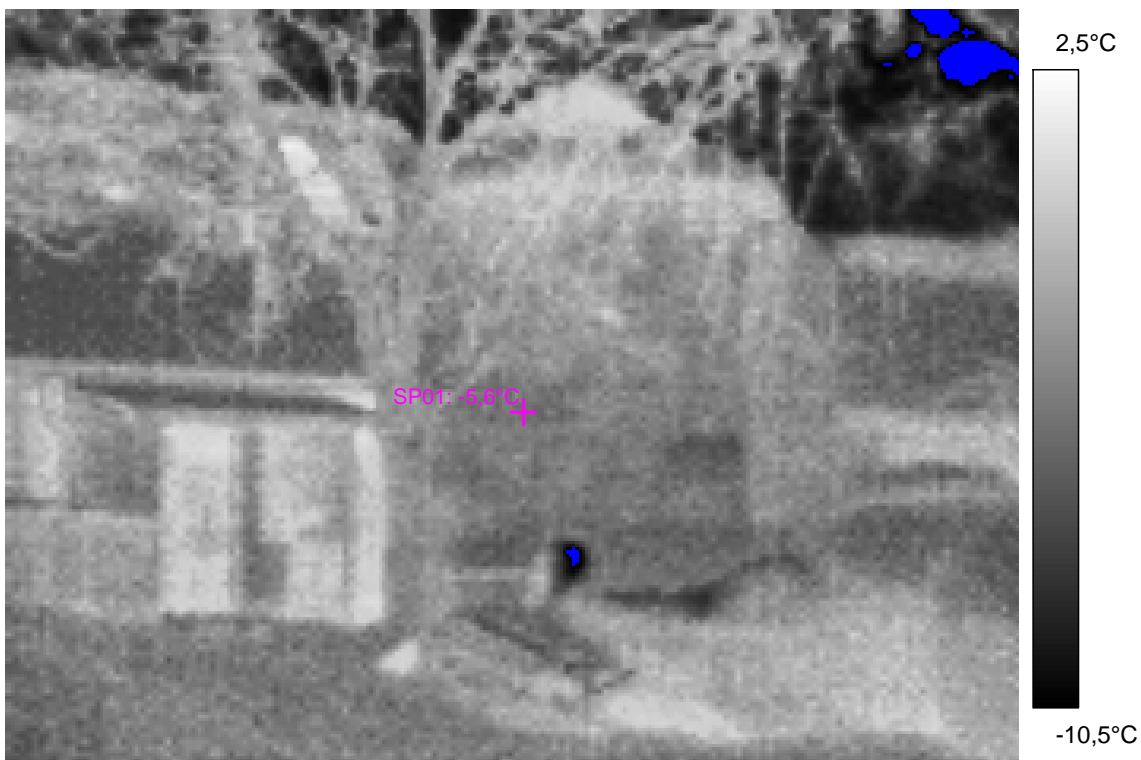
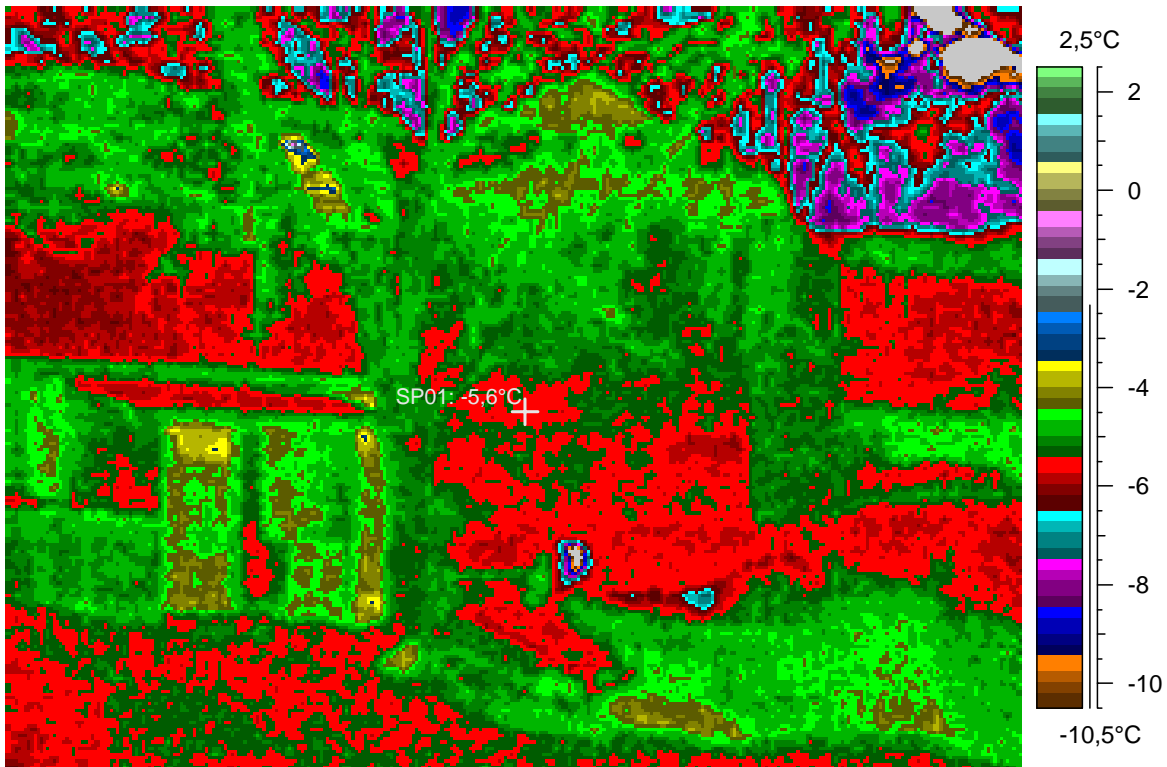
blabla

4 - Ir_1470.jpg

Label	Value
IR : max	-0,1°C
IR : min	*-25,3°C
SP01	-5,6°C

4.1.2008

1:51:18



comments:

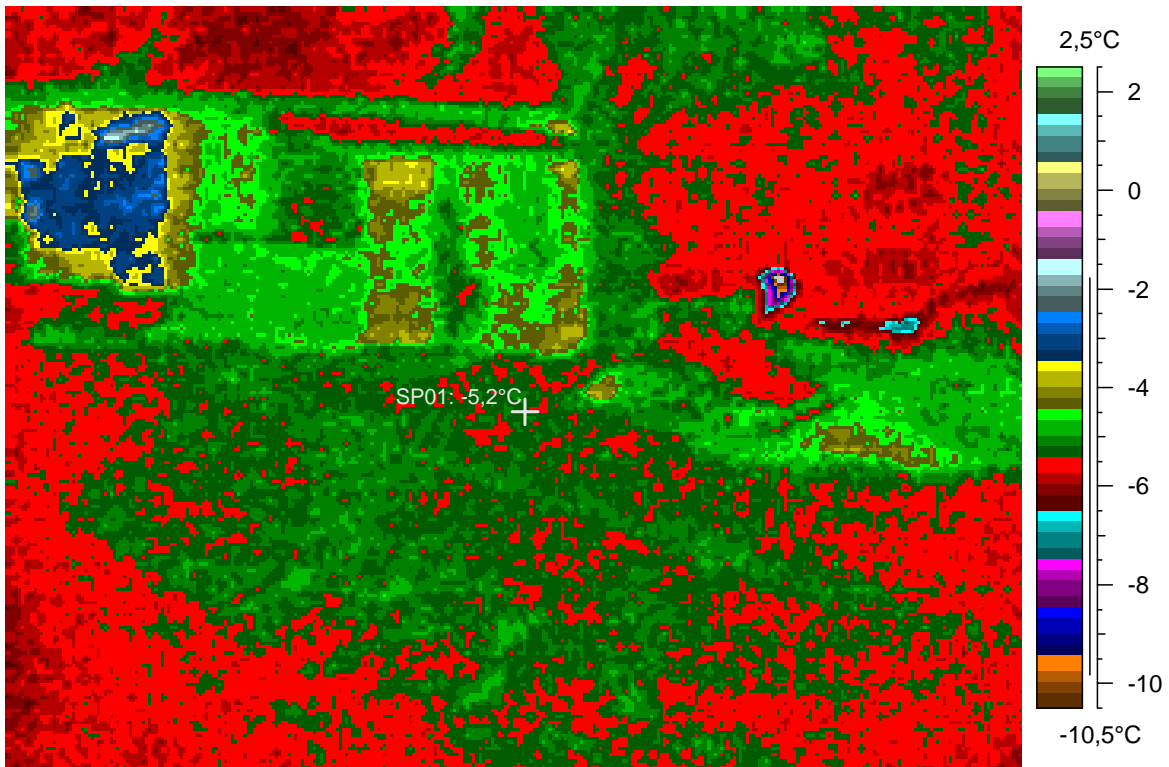
blabla

5 - Ir_1471.jpg

Label	Value
IR : max	-1,4°C
IR : min	-11,6°C
SP01	-5,2°C

4.1.2008

1:51:22



comments:

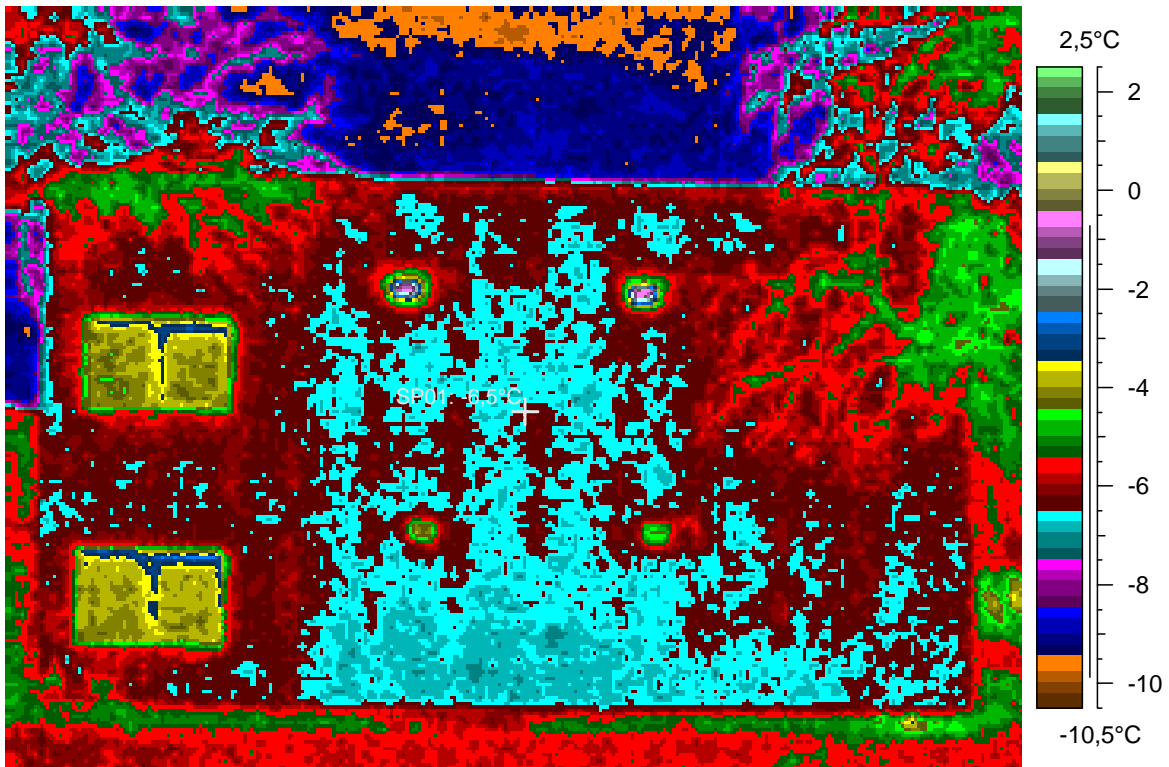
blabla

6 - Ir_1472.jpg

Label	Value
IR : max	-0,3°C
IR : min	-10,0°C
SP01	-6,5°C

4.1.2008

1:52:29



comments:

blabla

7 - Ir_1473.jpg

Label	Value
IR : max	0,3°C
IR : min	-10,0°C
SP01	-5,6°C

4.1.2008

1:52:50



comments:

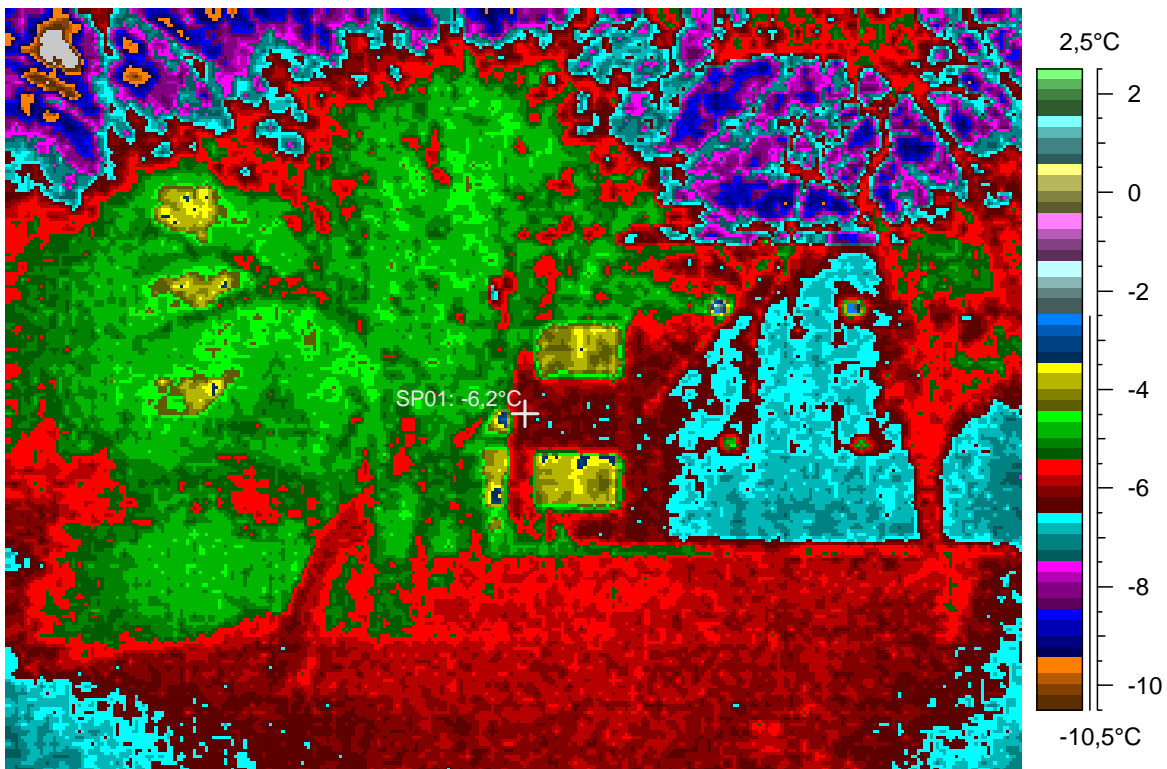
blabla

8 - Ir_1474.jpg

Label	Value
IR : max	-1,3°C
IR : min	-11,3°C
SP01	-6,2°C

4.1.2008

1:53:42



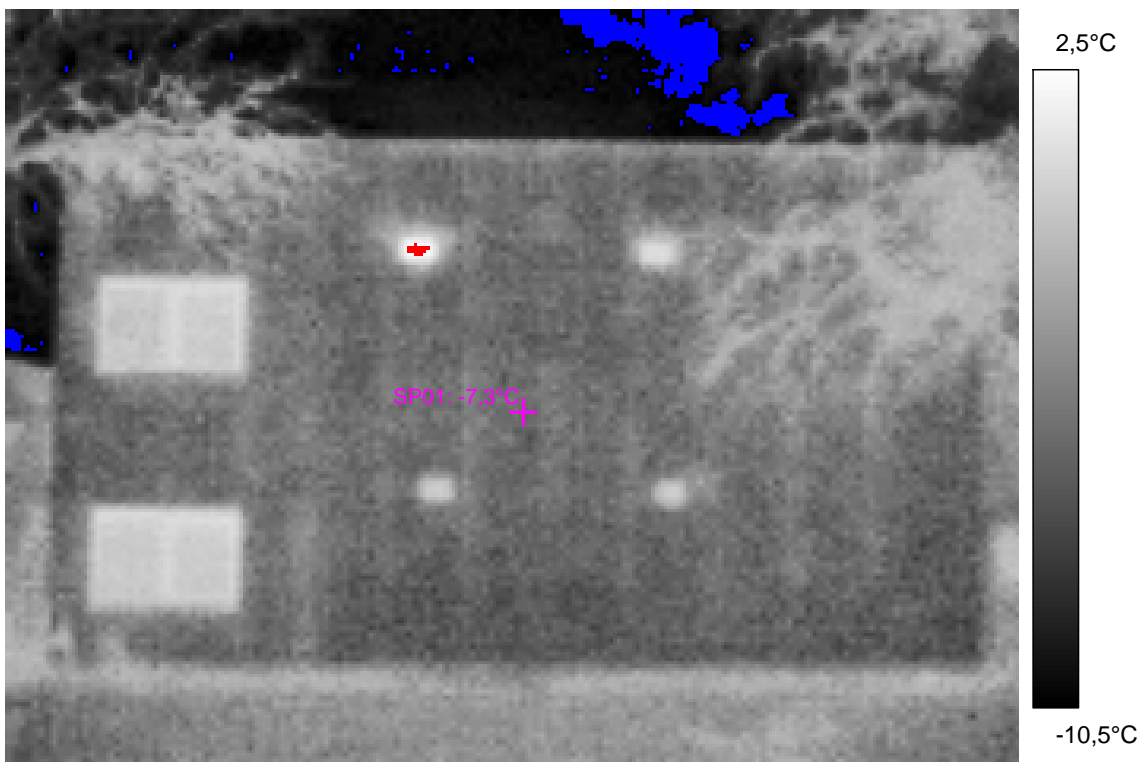
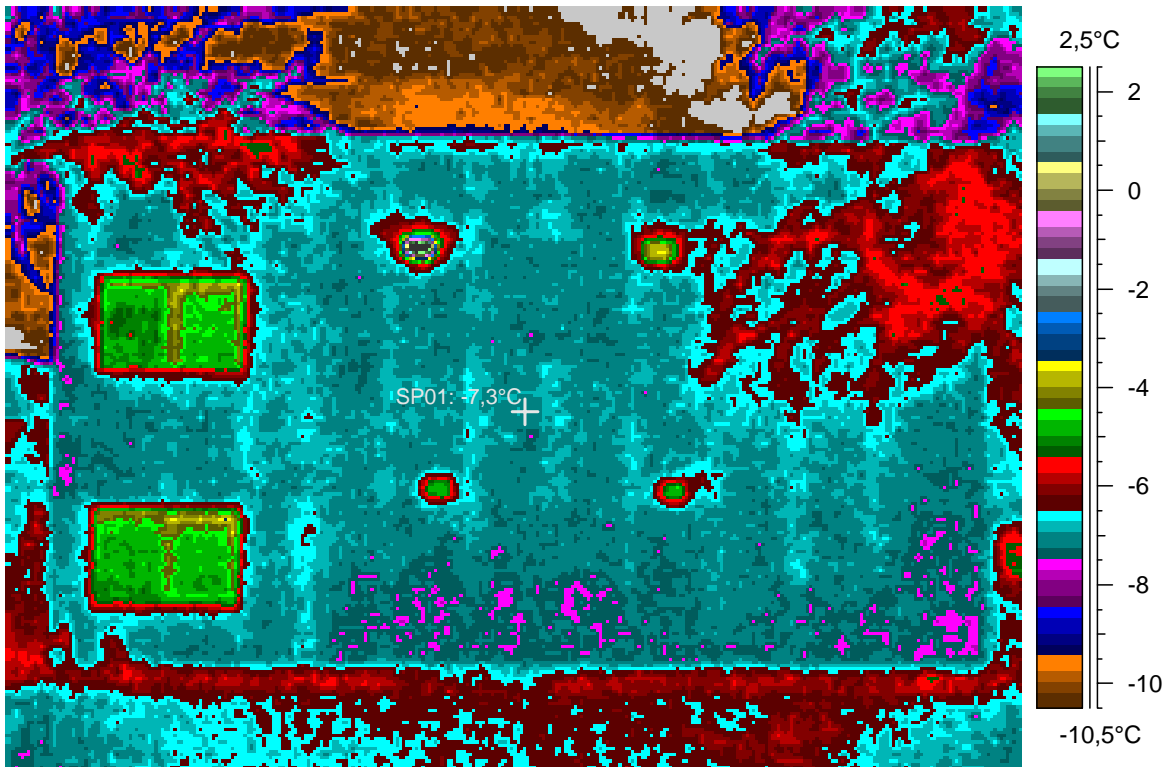
Upper ventilation works, exhaust is a left, influx of fresh air at right.
The temperature has increased at left by some 5 K and decreased by 3 K at right

9 - Ir_1475.jpg

Label	Value
IR : max	5,5°C
IR : min	-12,8°C
SP01	-7,3°C

4.1.2008

1:54:56



comments:

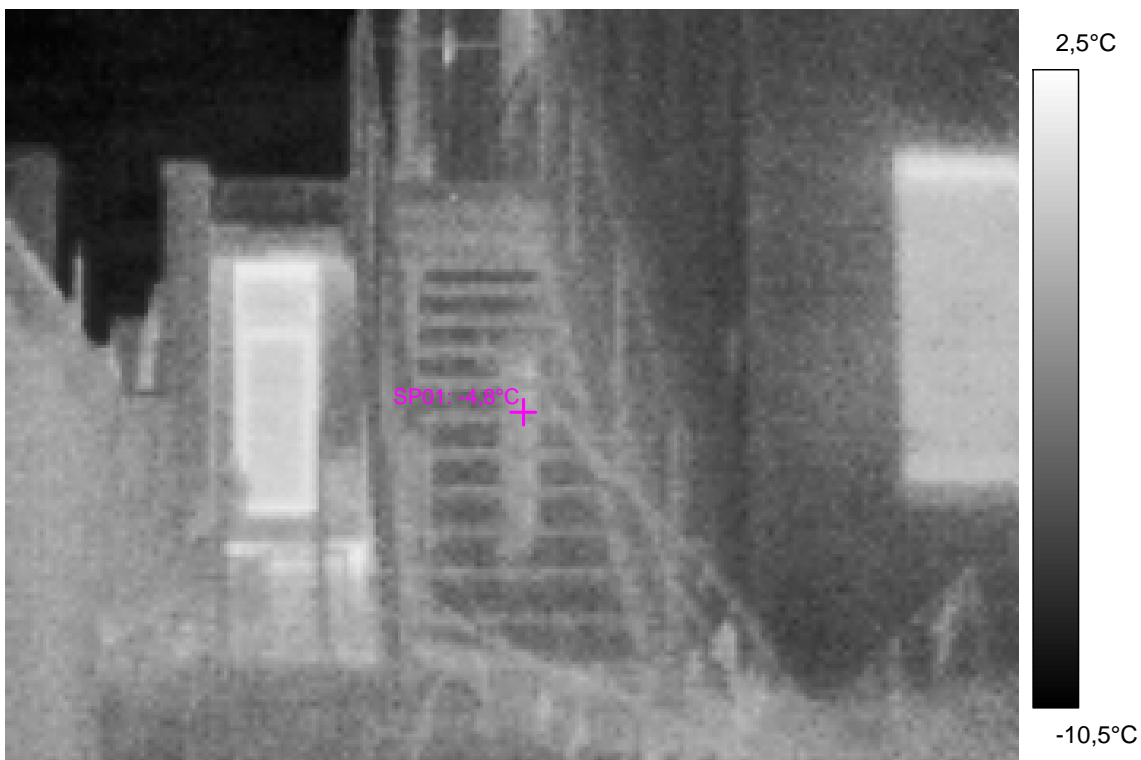
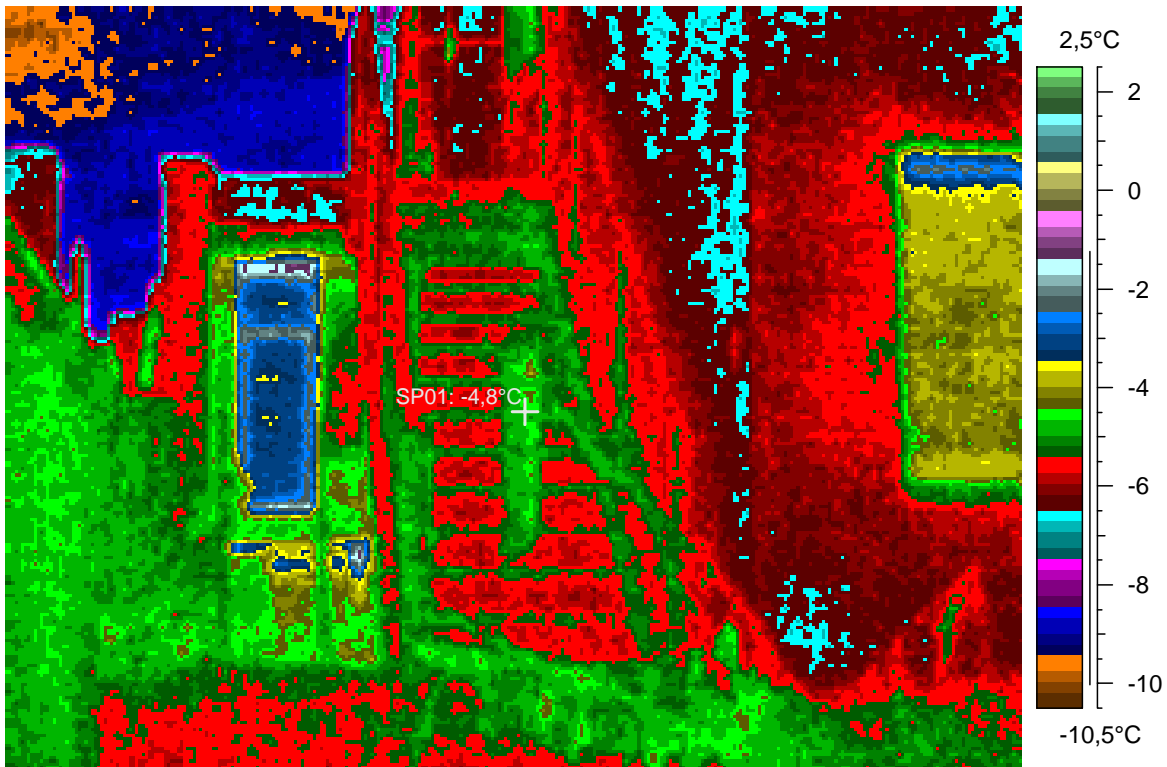
blabla

10 - Ir_1476.jpg

Label	Value
IR : max	-1,0°C
IR : min	-10,2°C
SP01	-4,8°C

4.1.2008

1:55:30



comments:

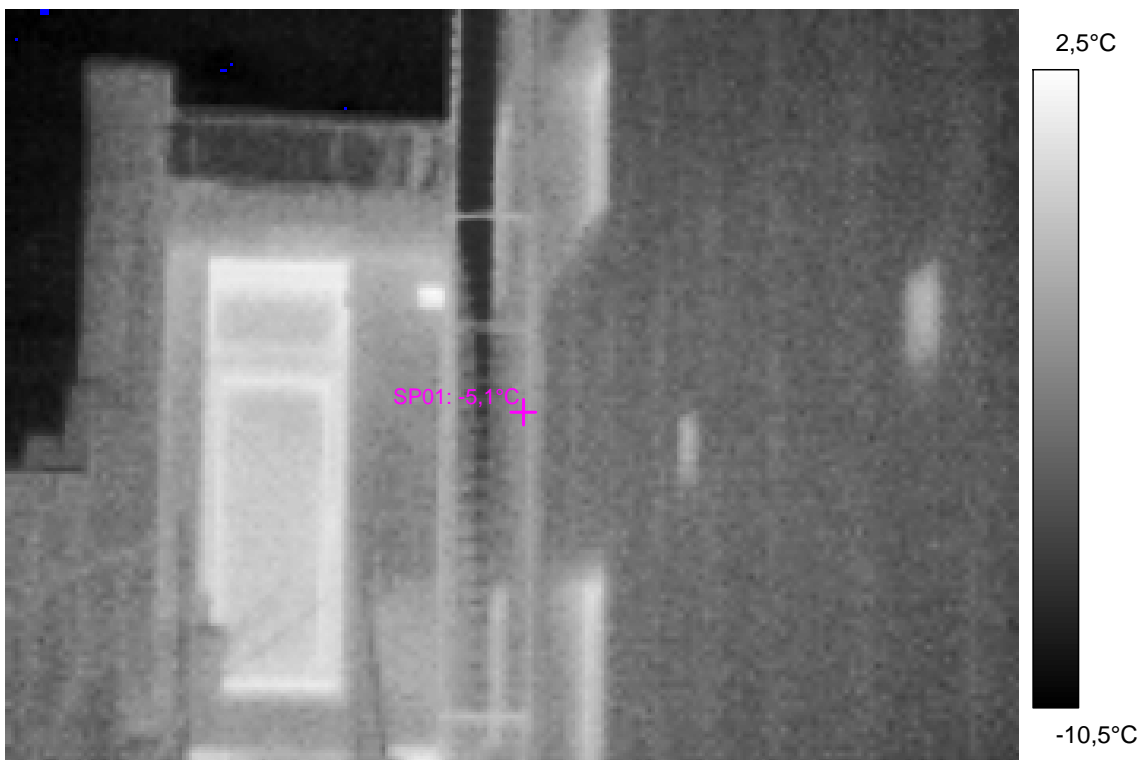
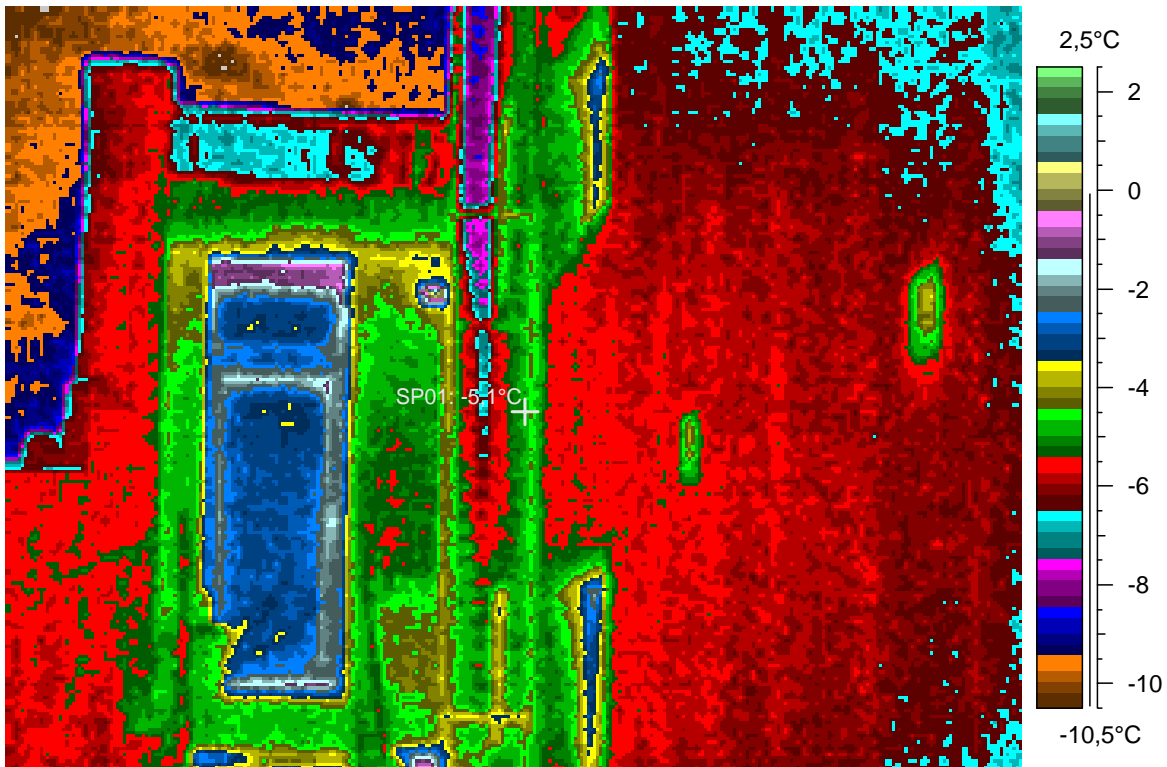
blabla

11 - Ir_1477.jpg

Label	Value
IR : max	1,4°C
IR : min	-10,8°C
SP01	-5,1°C

4.1.2008

1:56:04



comments:

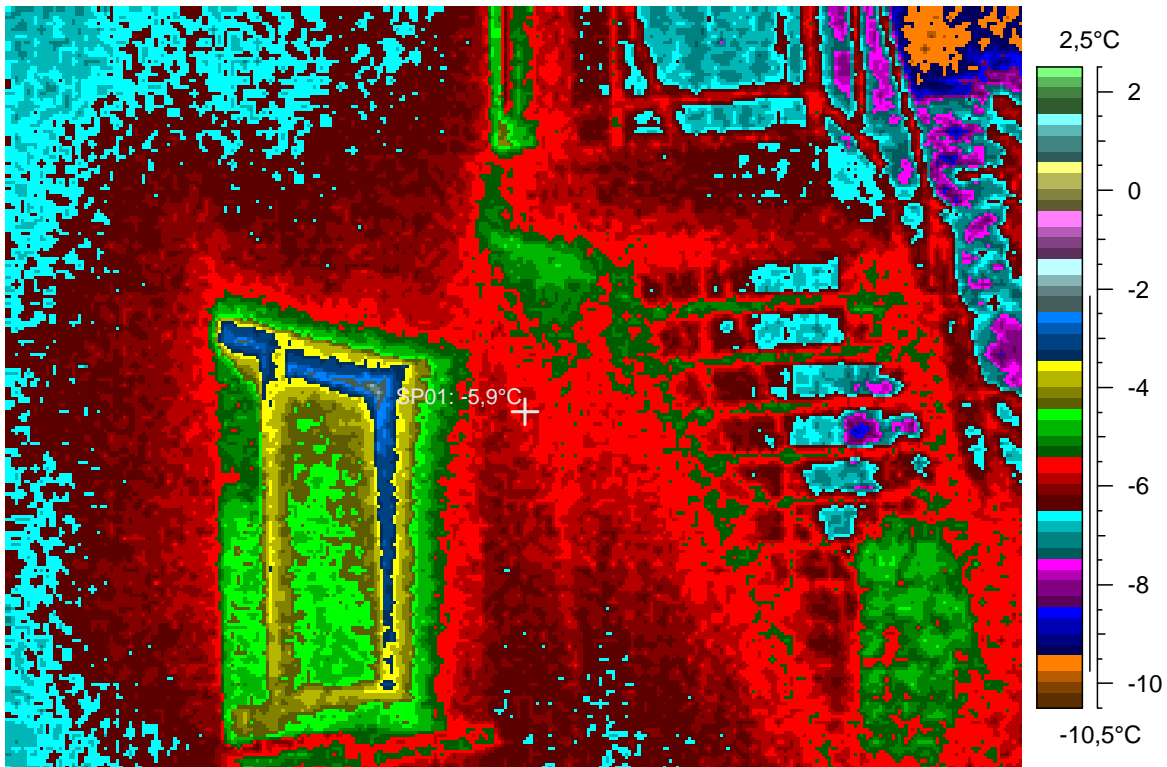
blabla

12 - Ir_1478.jpg

Label	Value
IR : max	-1,8°C
IR : min	-10,0°C
SP01	-5,9°C

4.1.2008

1:56:43



comments:

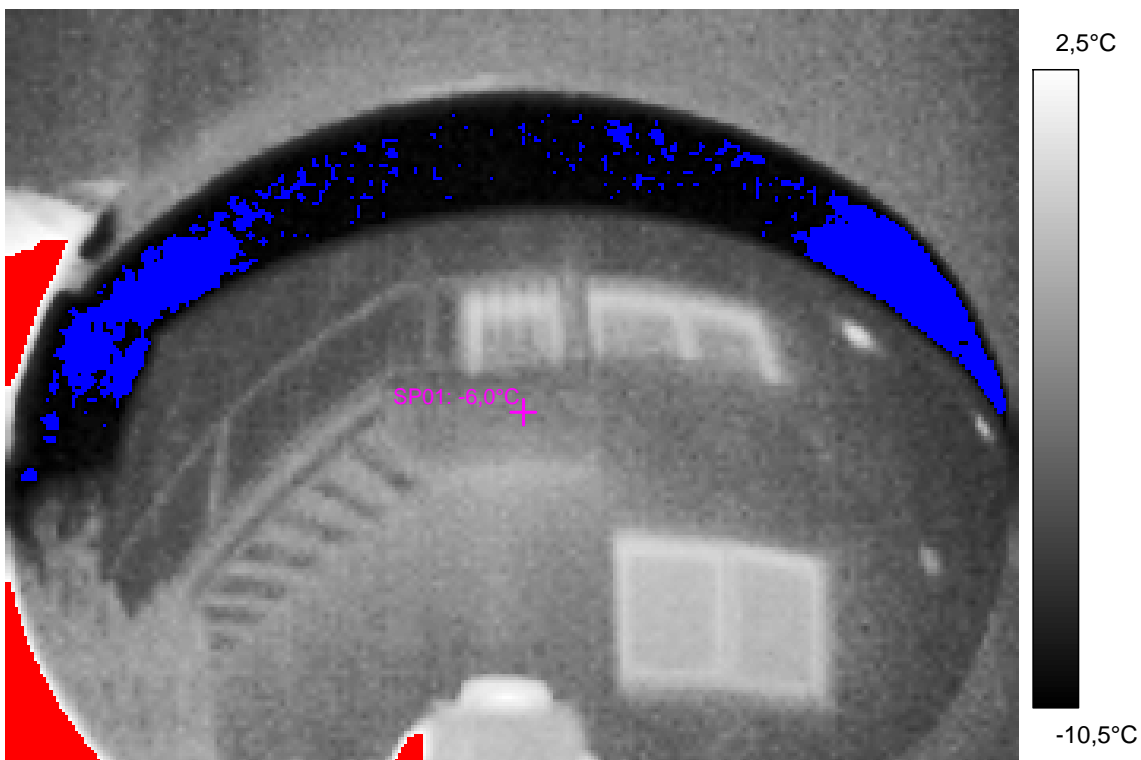
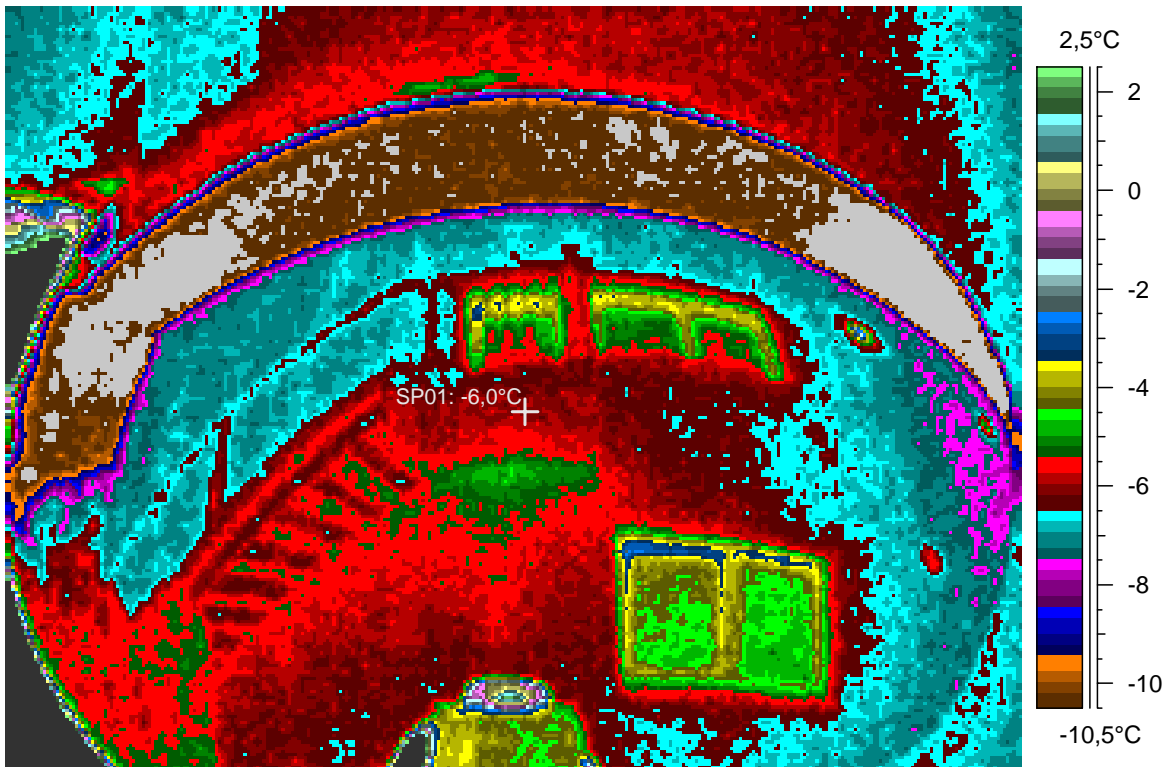
blabla

13 - Ir_1479.jpg

Label	Value
IR : max	21,0°C
IR : min	-16,7°C
SP01	-6,0°C

4.1.2008

1:57:53



comments:

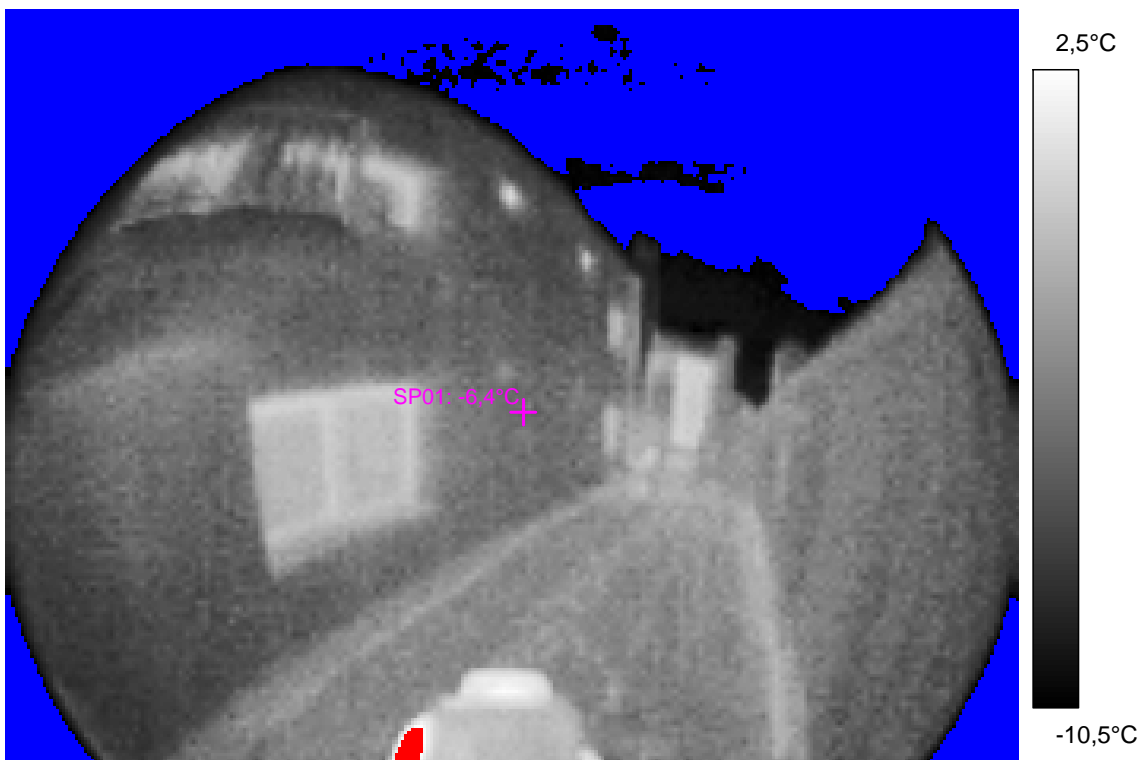
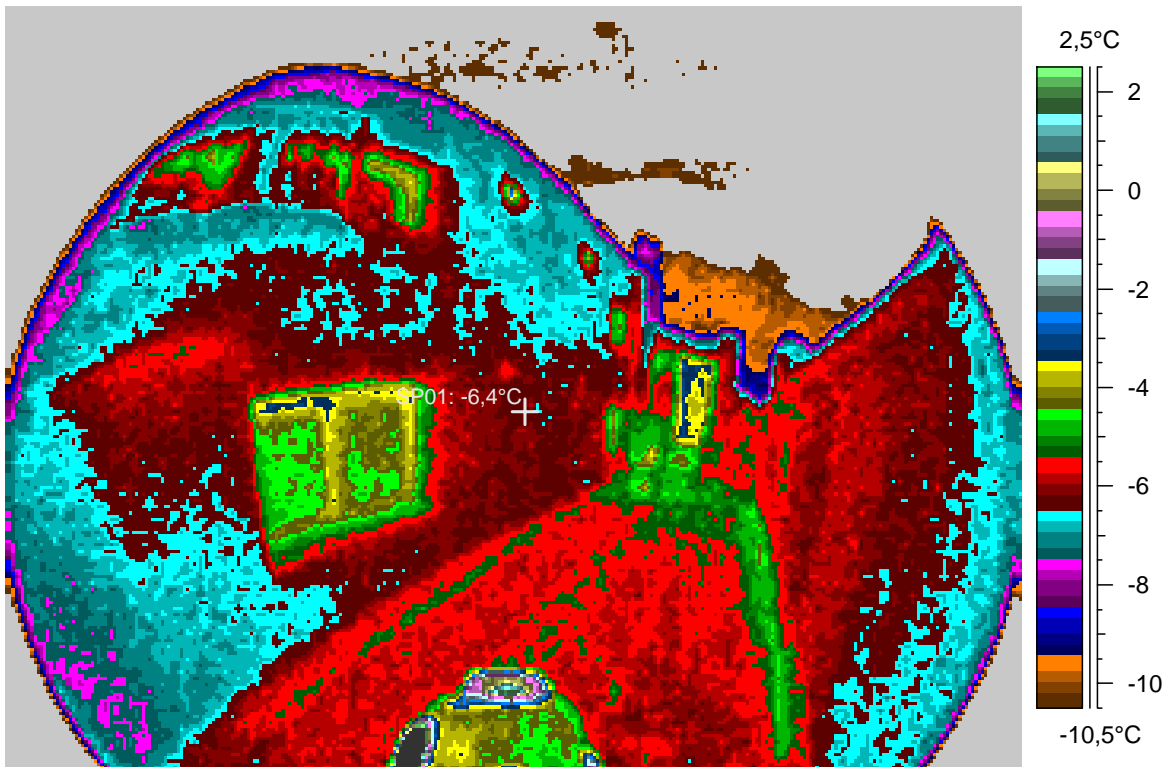
blabla

14 - Ir_1480.jpg

Label	Value
IR : max	11,9°C
IR : min	<-30,0°C
SP01	-6,4°C

4.1.2008

1:58:05



comments:

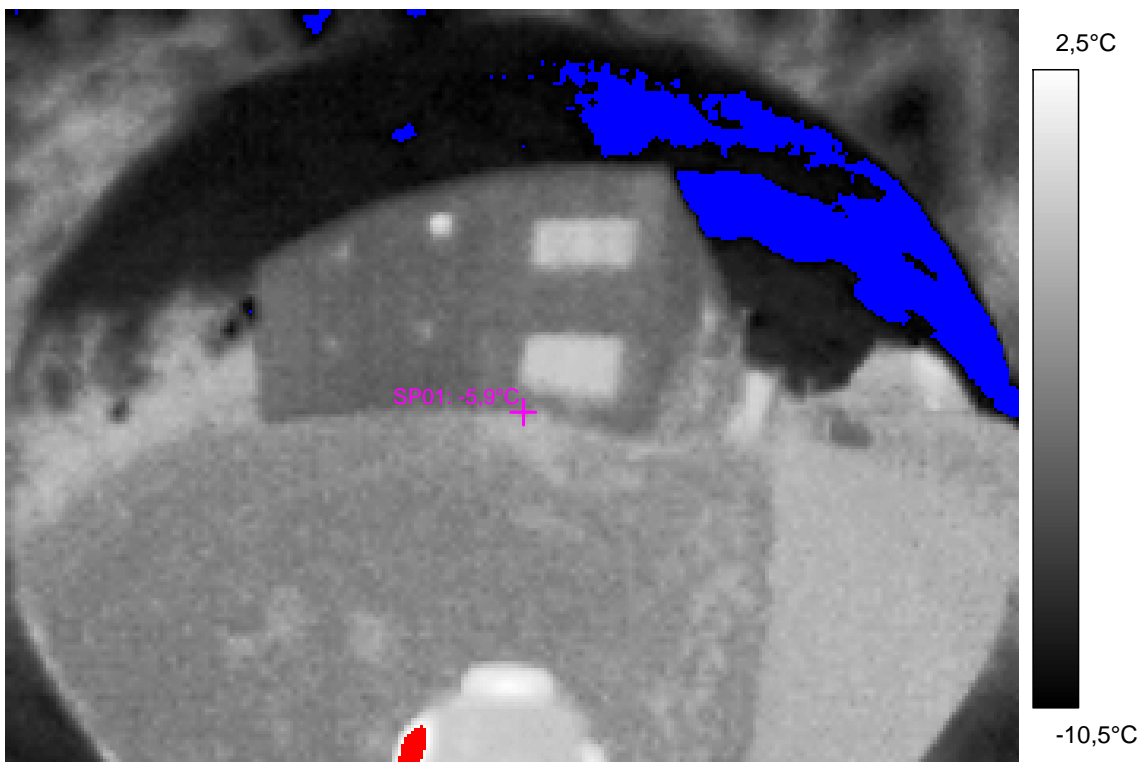
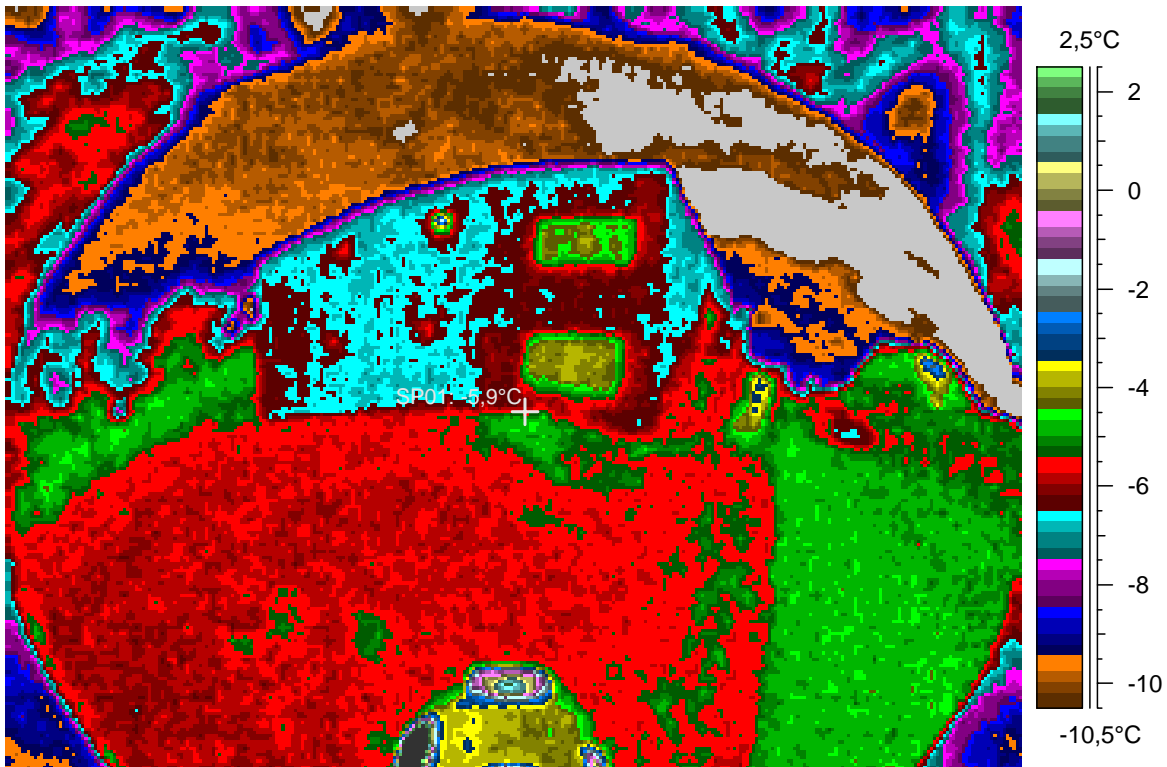
blabla

15 - Ir_1481.jpg

Label	Value
IR : max	10,8°C
IR : min	*-29,8°C
SP01	-5,9°C

4.1.2008

1:58:30



comments:

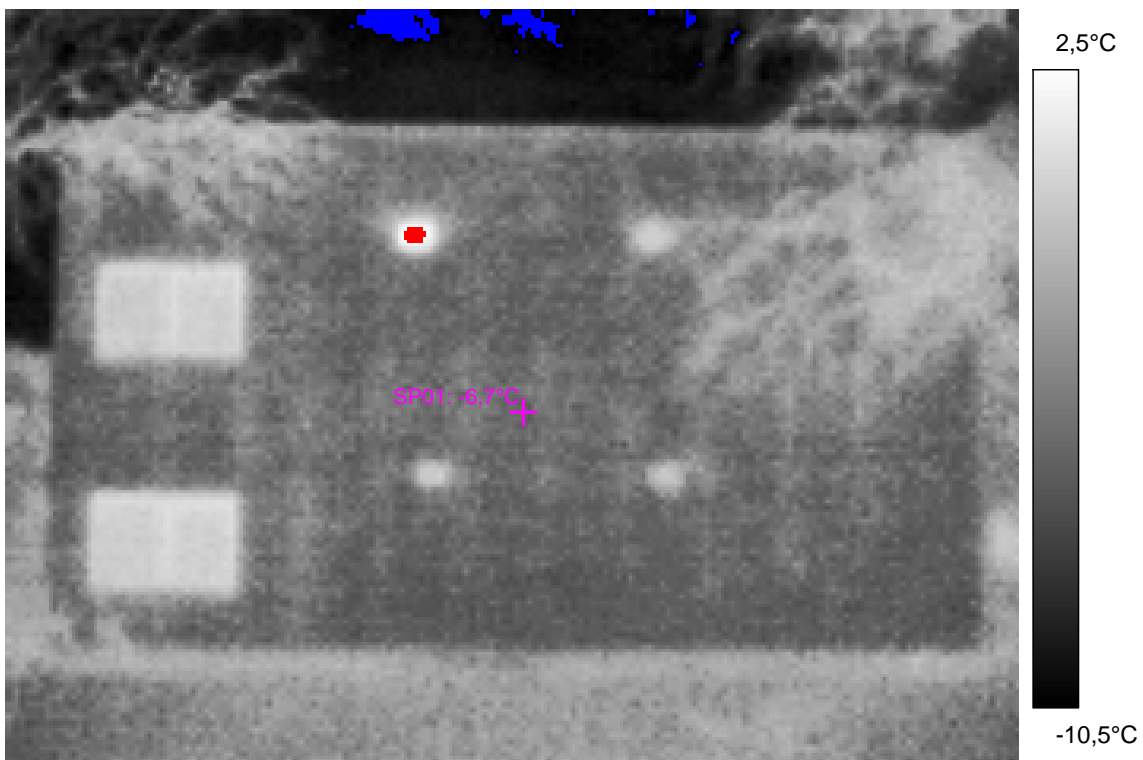
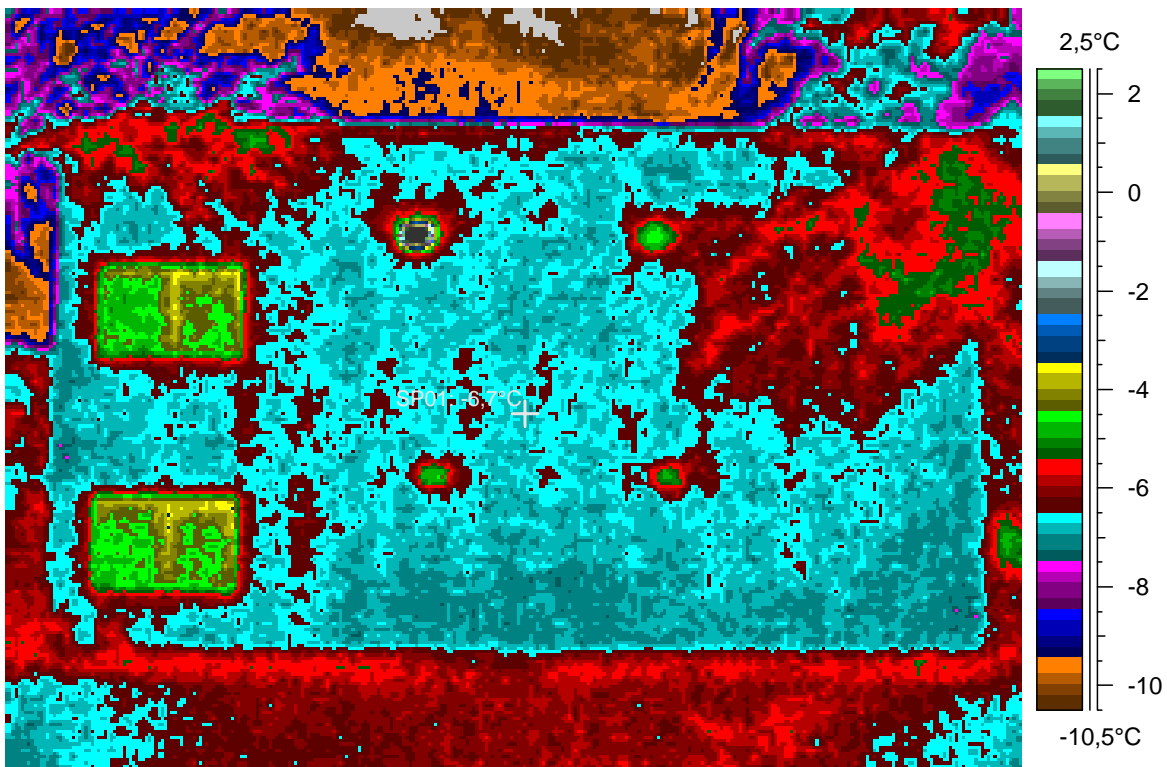
blabla

16 - Ir_1482.jpg

Label	Value
IR : max	6,3°C
IR : min	-11,4°C
SP01	-6,7°C

4.1.2008

1:59:28



comments:

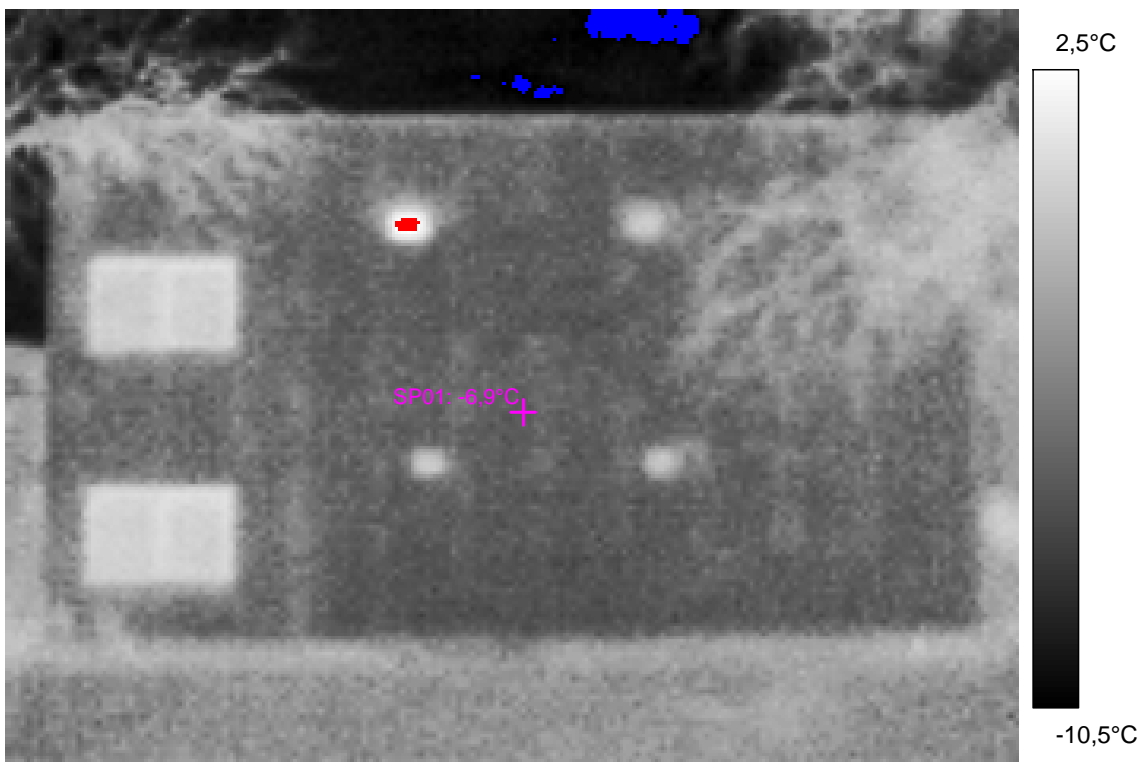
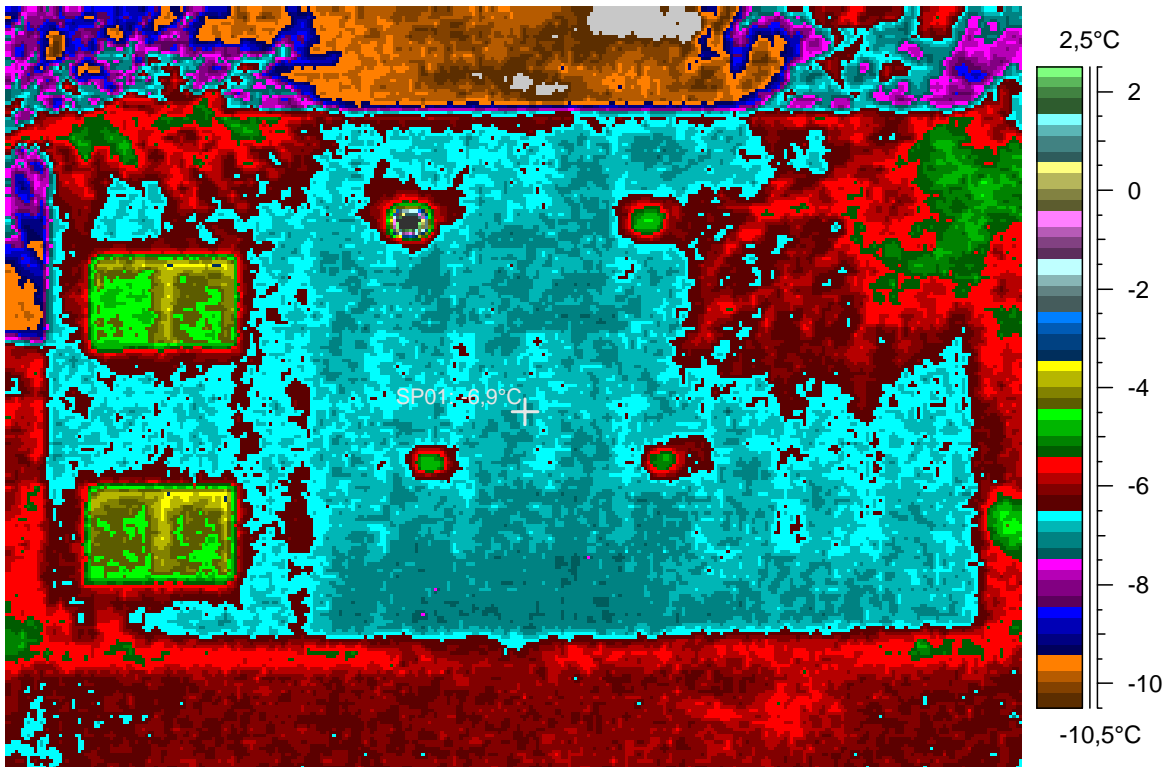
blabla

17 - Ir_1483.jpg

Label	Value
IR : max	5,8°C
IR : min	-11,6°C
SP01	-6,9°C

4.1.2008

2:00:08



comments:

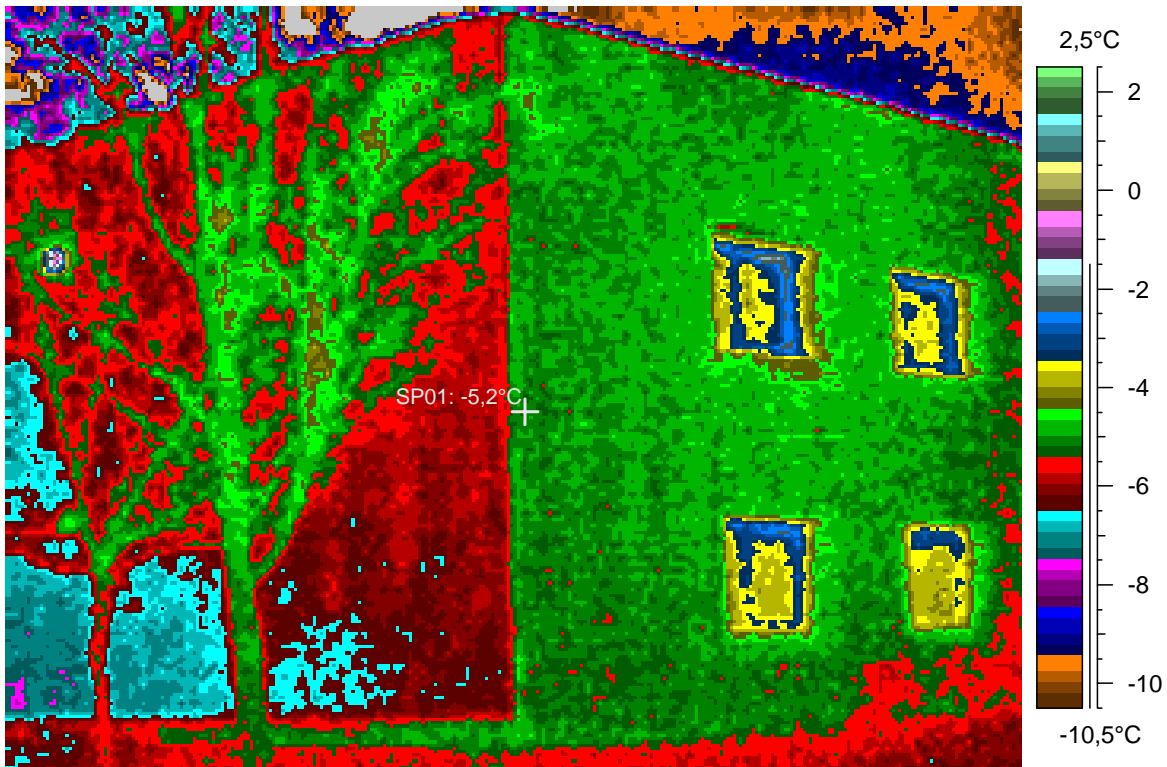
blabla

18 - Ir_1484.jpg

Label	Value
IR : max	-0,1°C
IR : min	*-20,6°C
SP01	-5,2°C

4.1.2008

2:01:49



comments:

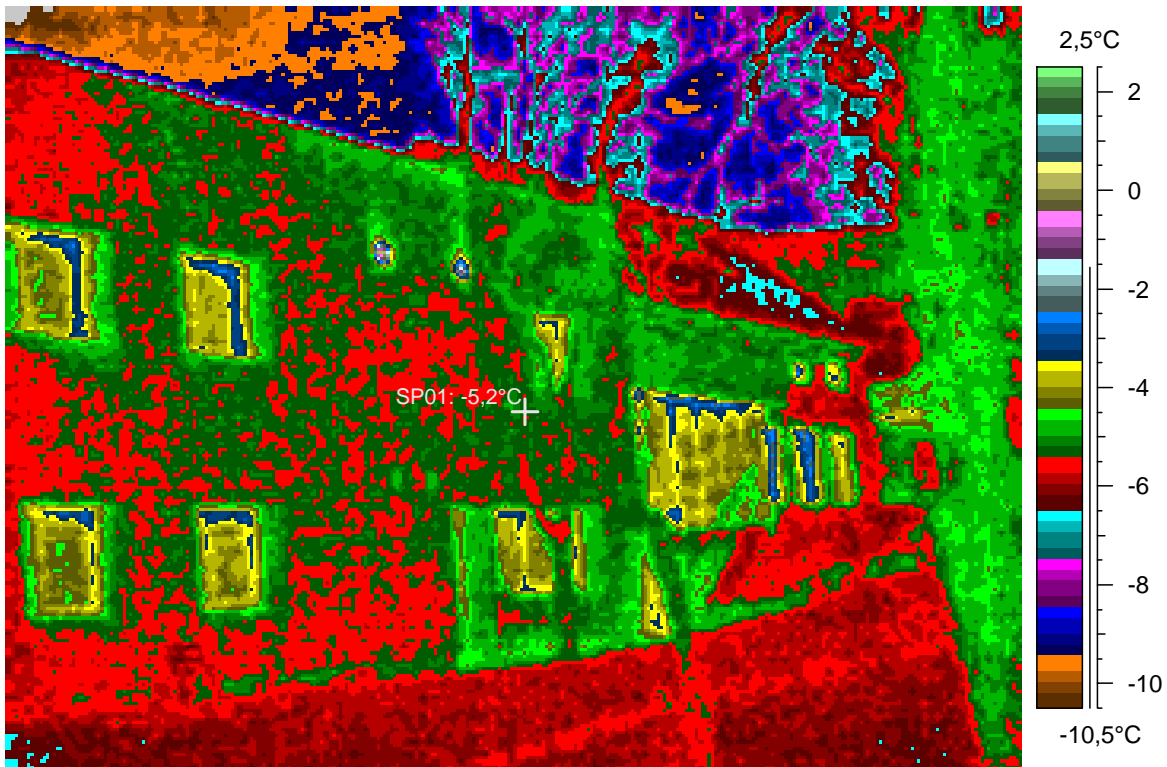
blabla

19 - Ir_1485.jpg

Label	Value
IR : max	0,3°C
IR : min	-11,1°C
SP01	-5,2°C

4.1.2008

2:02:17



comments:

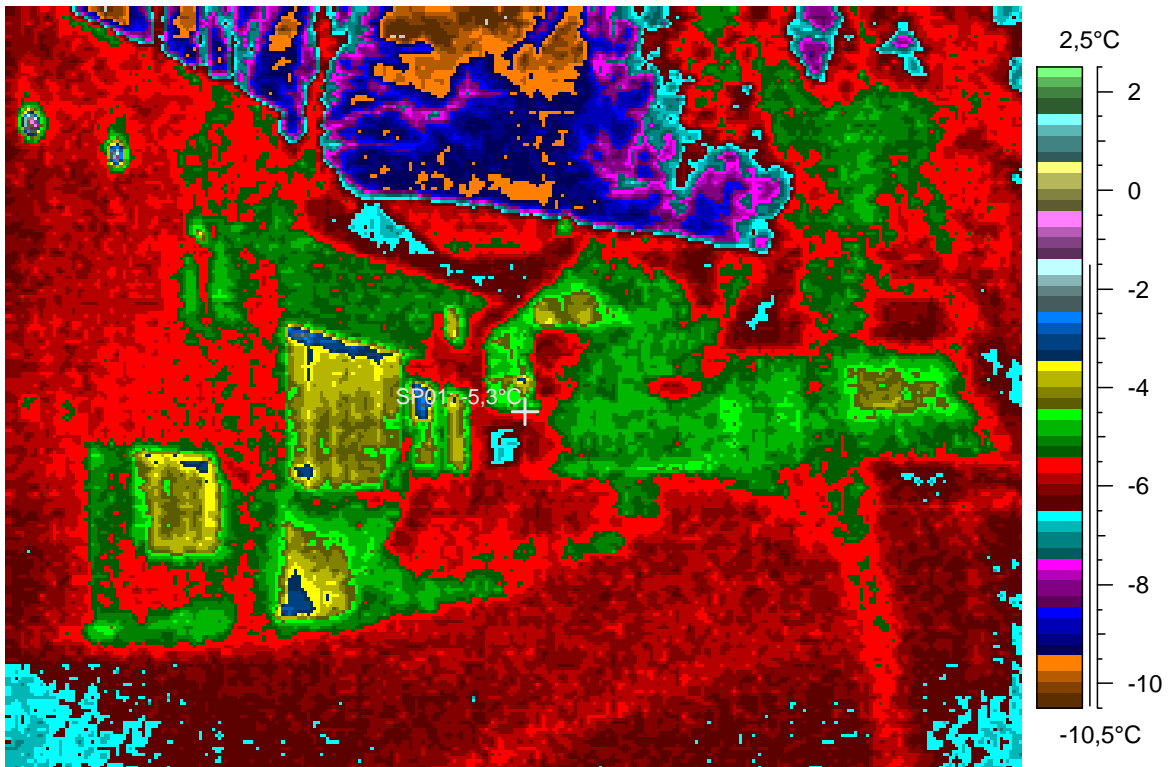
blabla

20 - Ir_1486.jpg

Label	Value
IR : max	-0,1°C
IR : min	-10,6°C
SP01	-5,3°C

4.1.2008

2:02:54



comments:

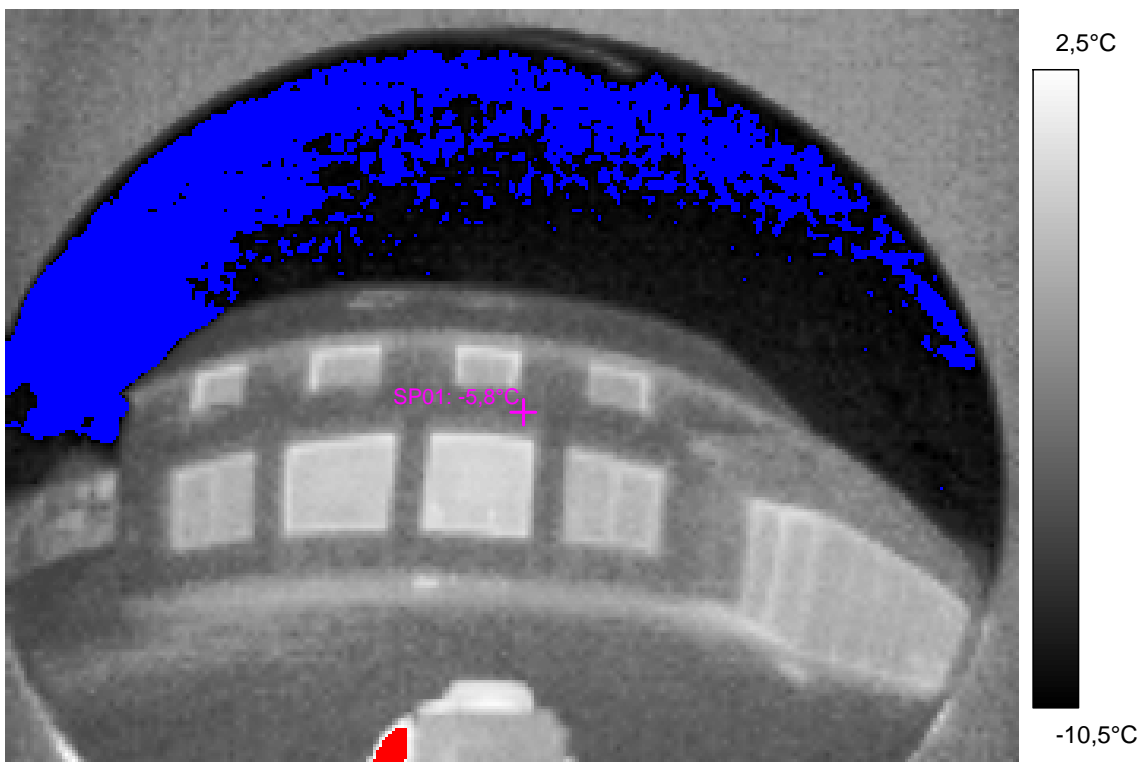
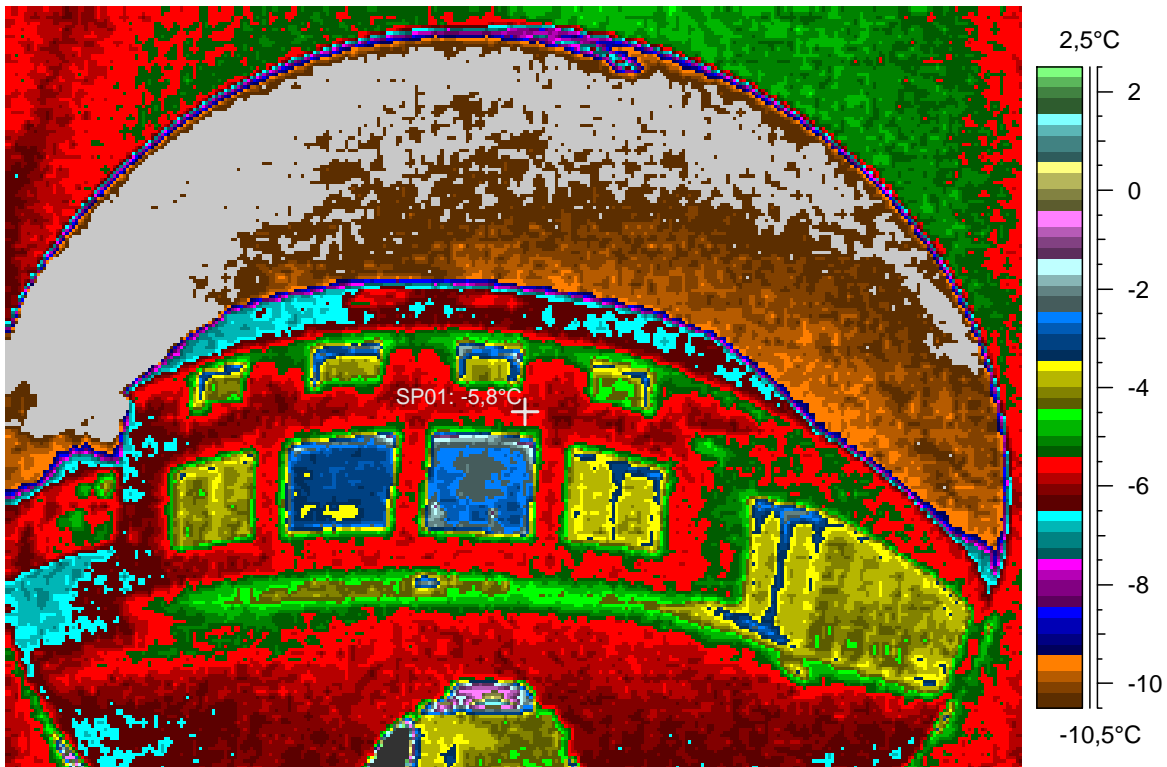
blabla

21 - Ir_1487.jpg

Label	Value
IR : max	11,8°C
IR : min	<-30,0°C
SP01	-5,8°C

4.1.2008

2:04:18



comments:

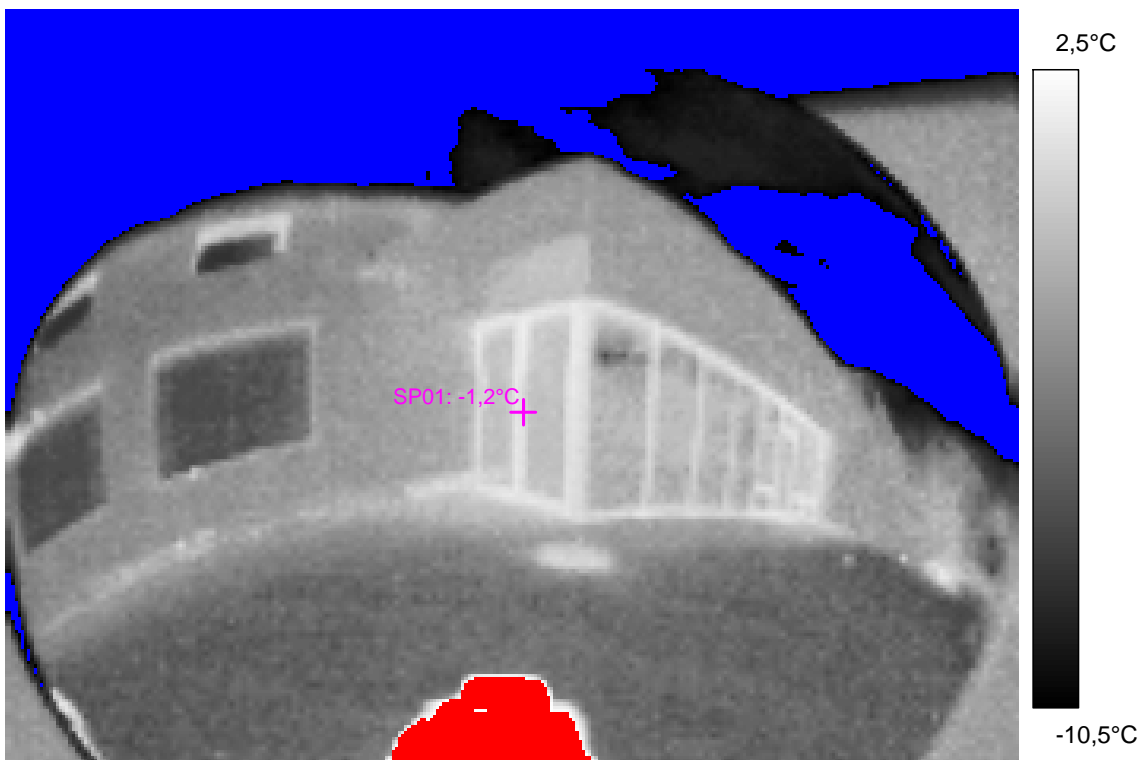
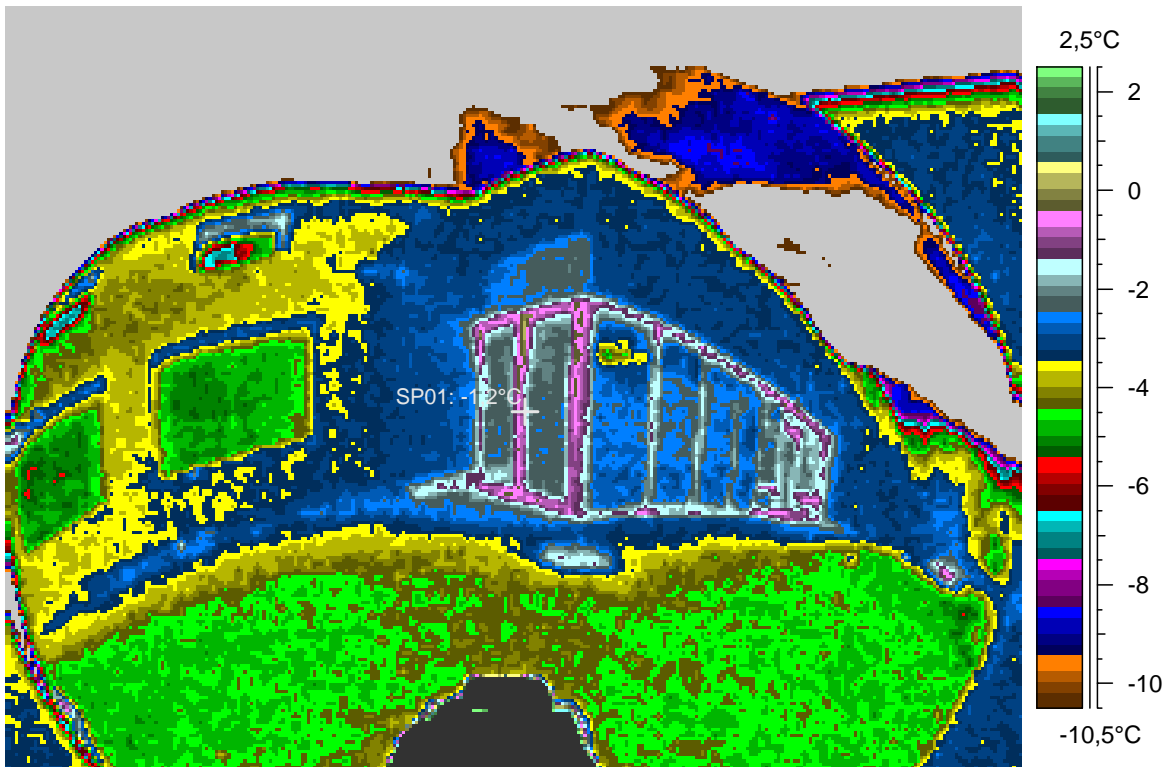
blabla

22 - Ir_1510.jpg

Label	Value
IR : max	24,8°C
IR : min	<-30,0°C
SP01	-1,2°C

4.1.2008

9:16:51



comments:

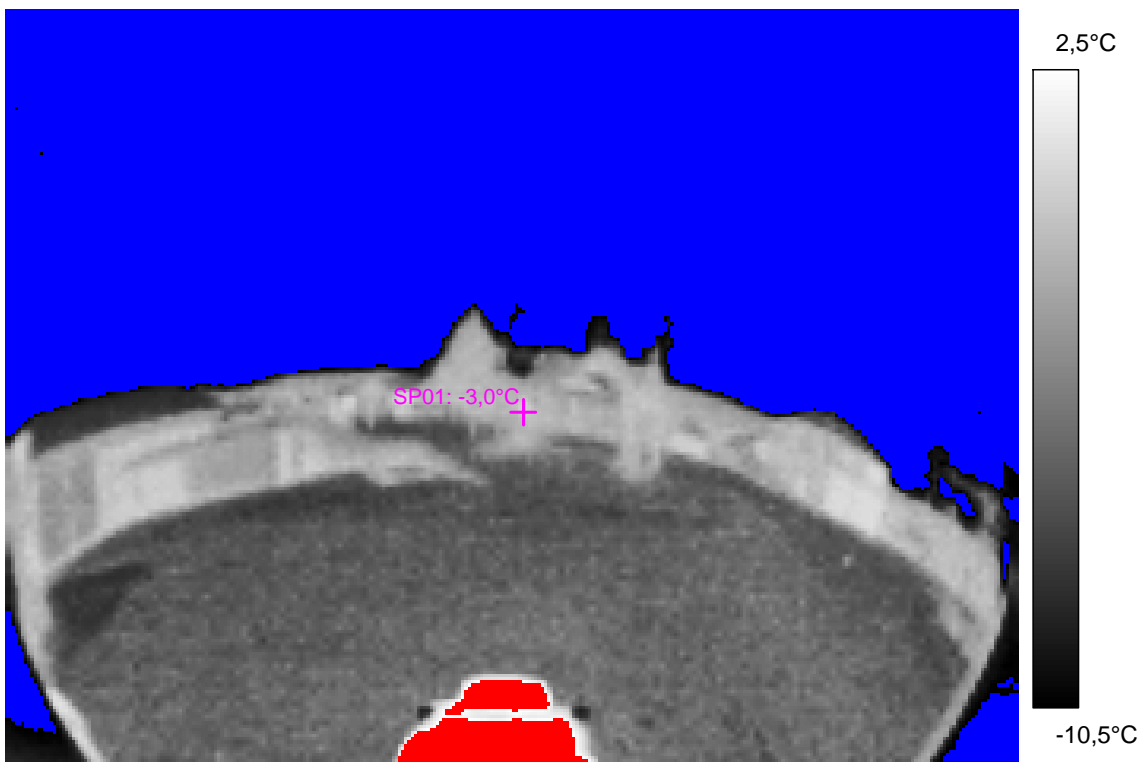
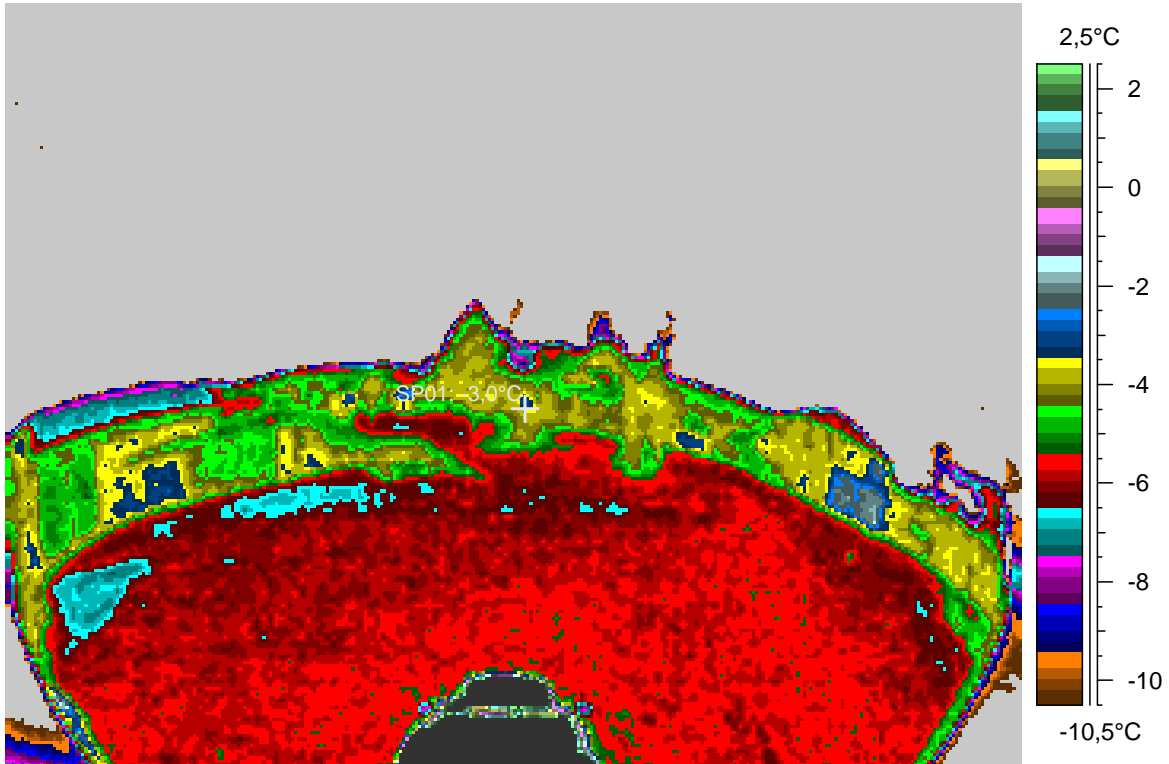
blabla

23 - Ir_1511.jpg

Label	Value
IR : max	21,5°C
IR : min	<-30,0°C
SP01	-3,0°C

4.1.2008

9:17:12



comments:

blabla

24 - Ir_1512.jpg

Label	Value
IR : max	18,7°C
IR : min	<-30,0°C
SP01	-5,6°C

4.1.2008

9:17:51

