

comments:

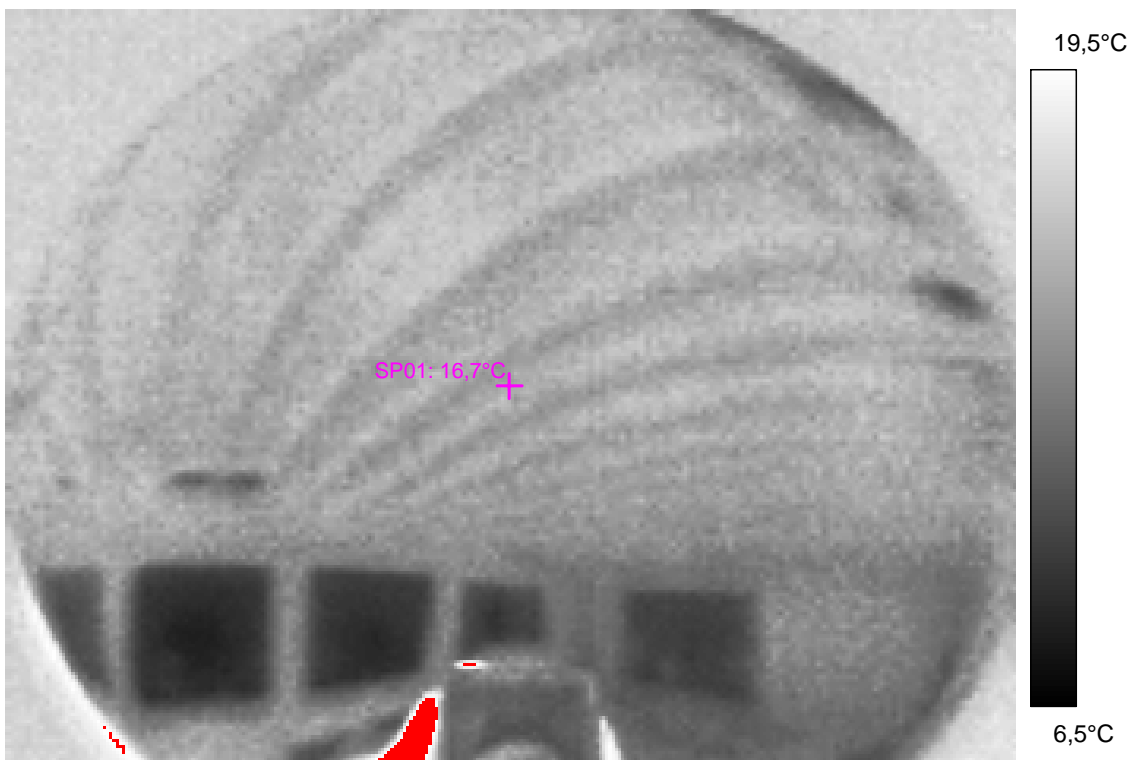
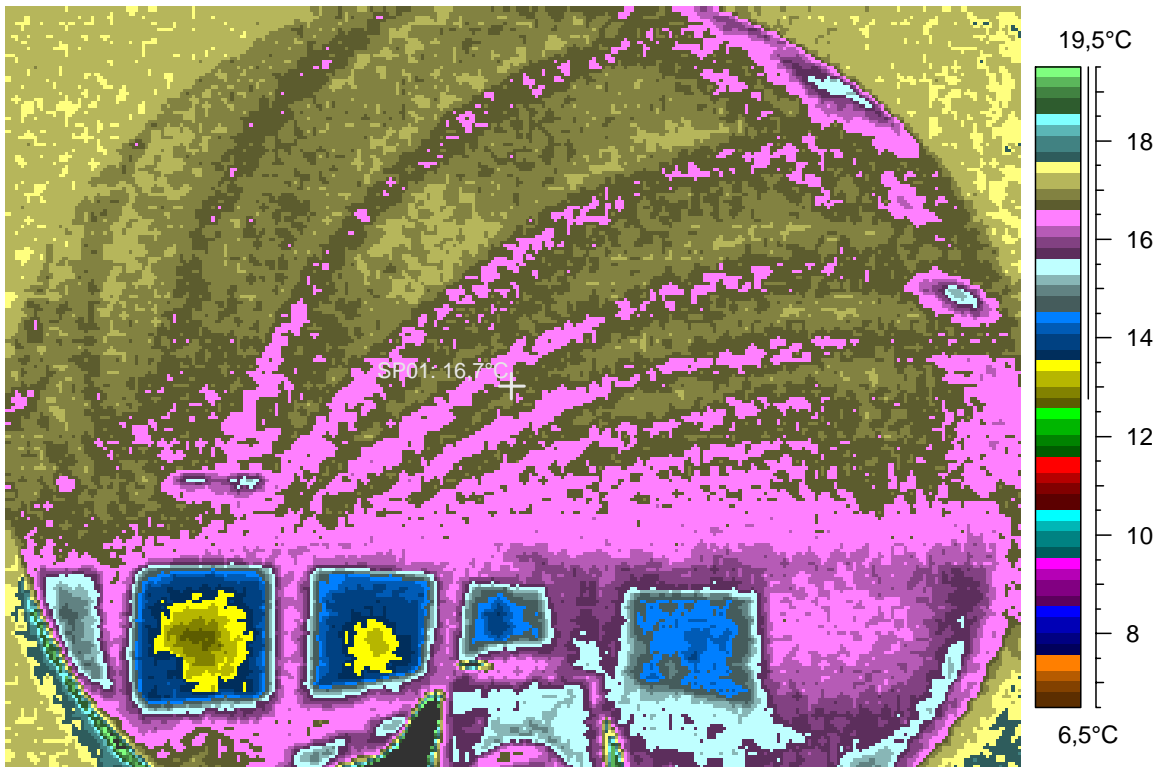
blabla

1 - Ir_1240.jpg

Label	Value
IR : max	27,3°C
IR : min	12,6°C
SP01	16,7°C

3.1.2008

21:09:45



comments:

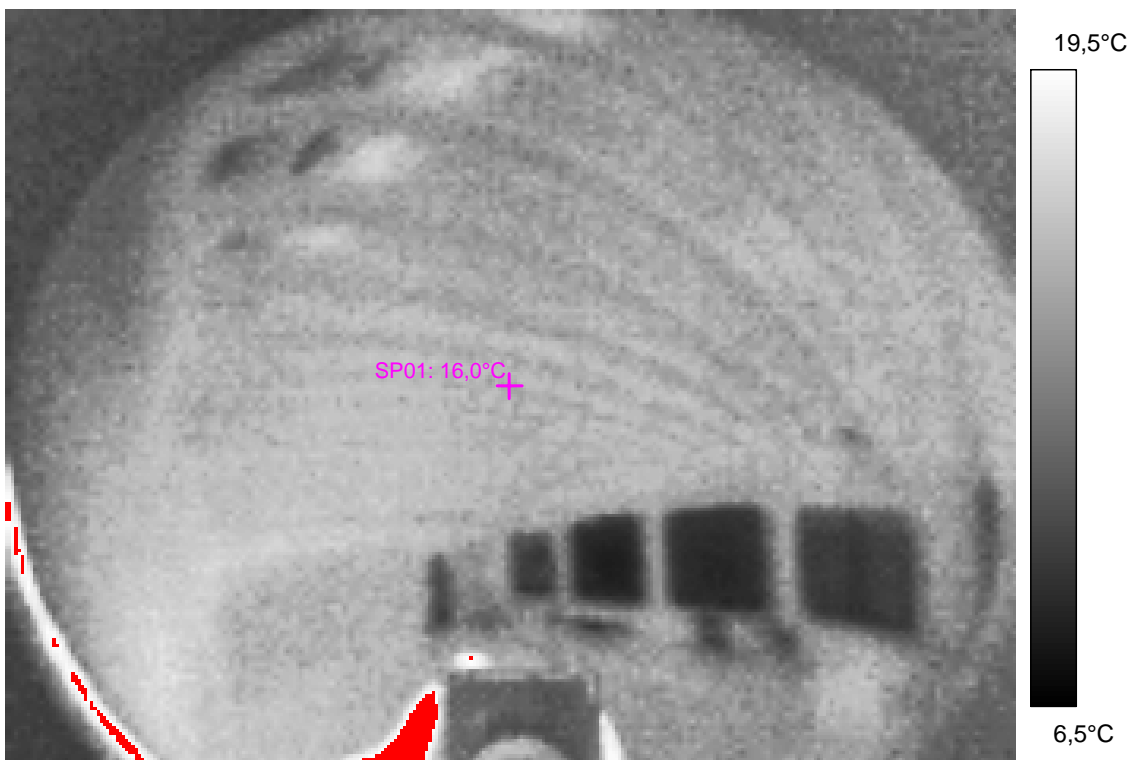
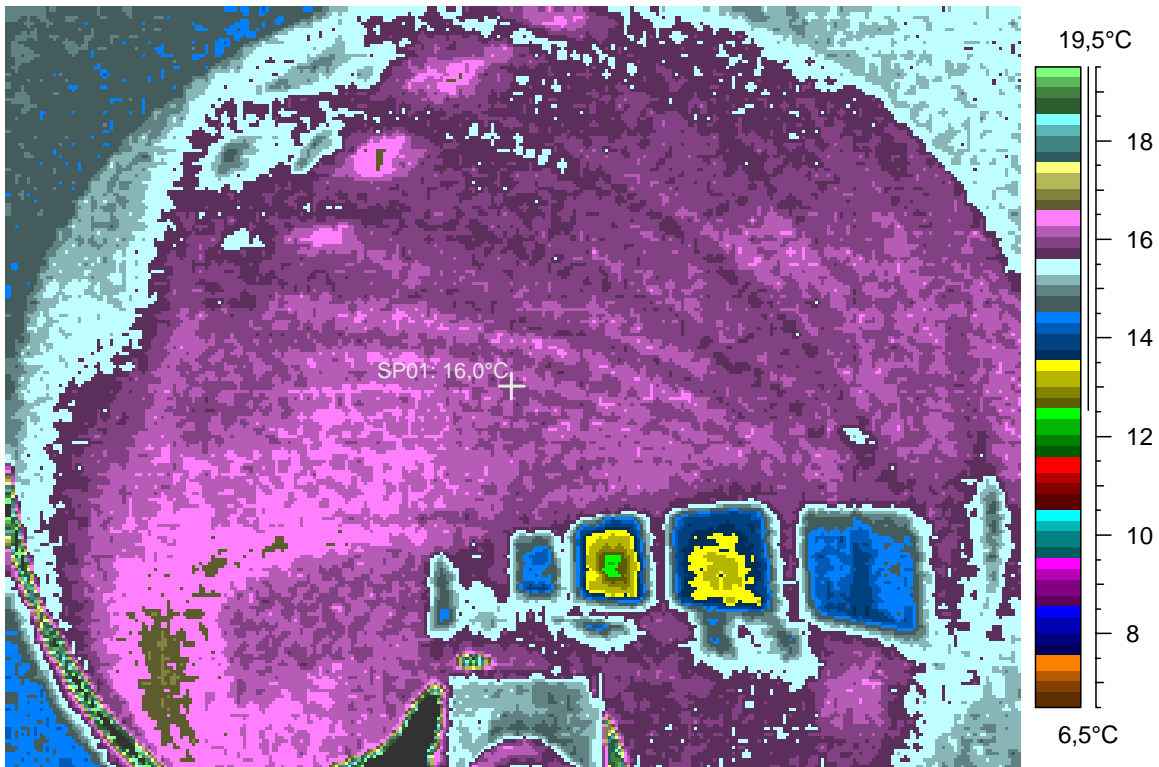
blabla

2 - Ir_1241.jpg

Label	Value
IR : max	27,5°C
IR : min	12,3°C
SP01	16,0°C

3.1.2008

21:10:04



comments:

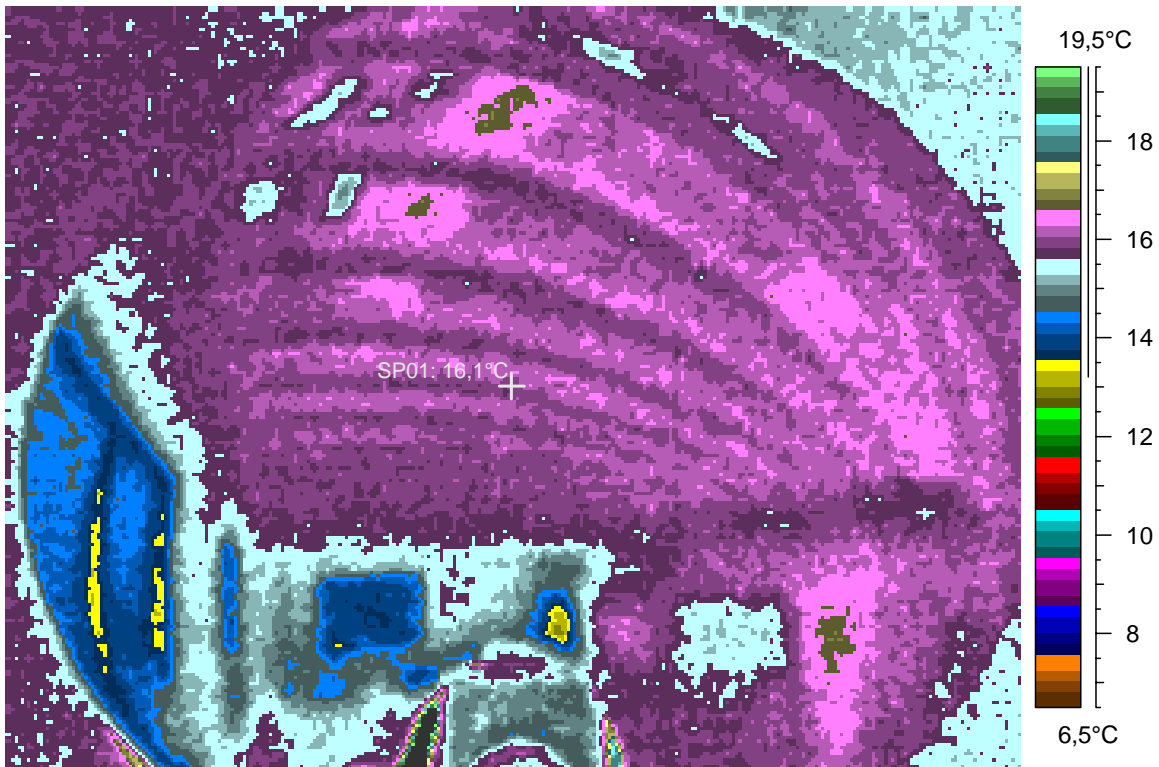
blabla

3 - Ir_1242.jpg

Label	Value
IR : max	25,0°C
IR : min	13,0°C
SP01	16,1°C

3.1.2008

21:10:31



comments:

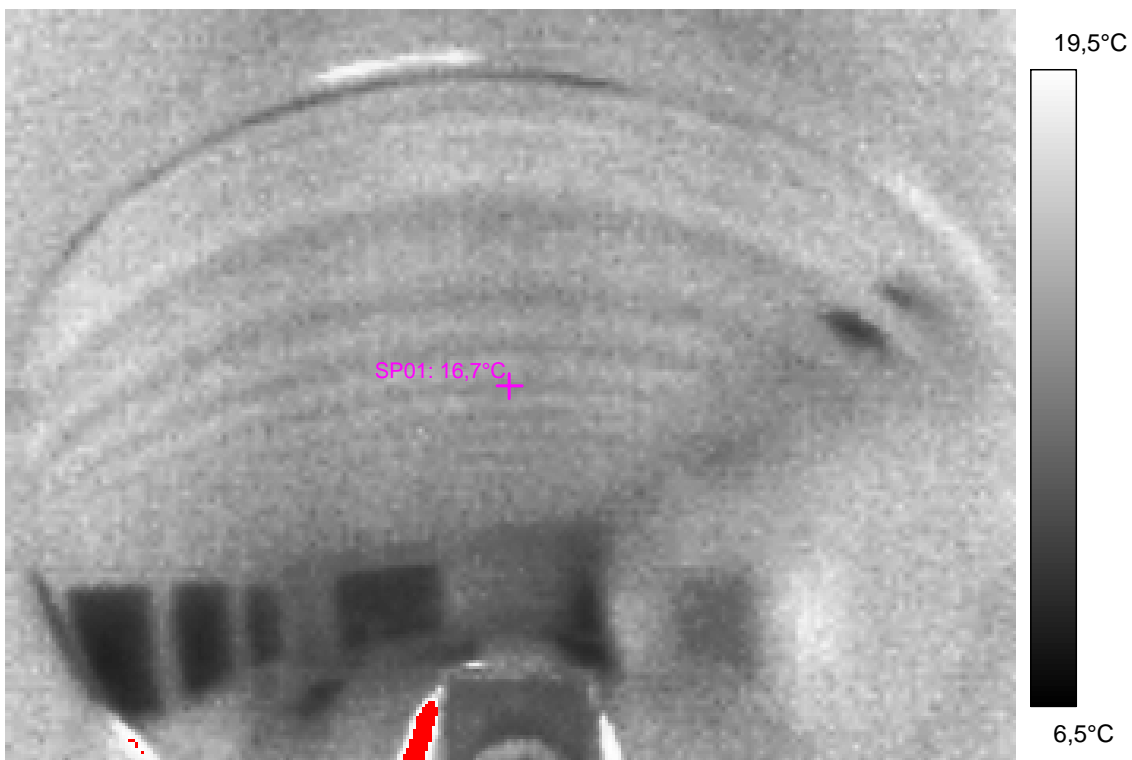
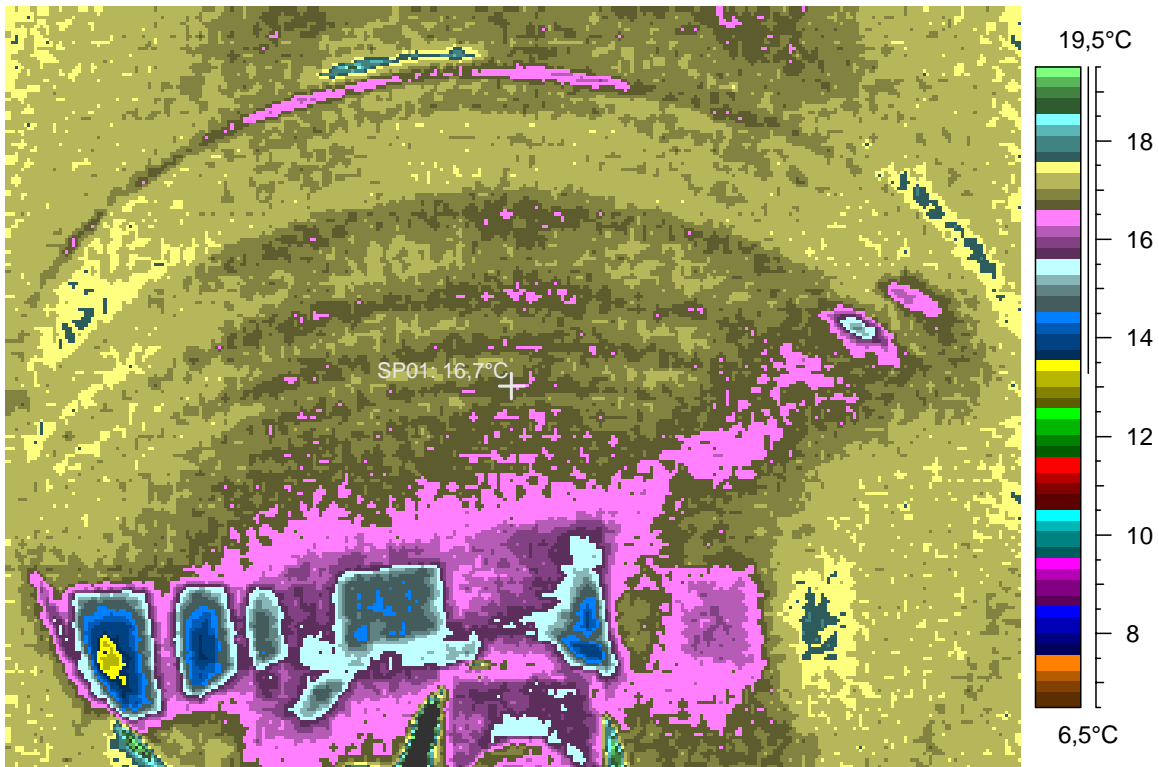
blabla

4 - Ir_1243.jpg

Label	Value
IR : max	25,9°C
IR : min	13,1°C
SP01	16,7°C

3.1.2008

21:10:47



comments:

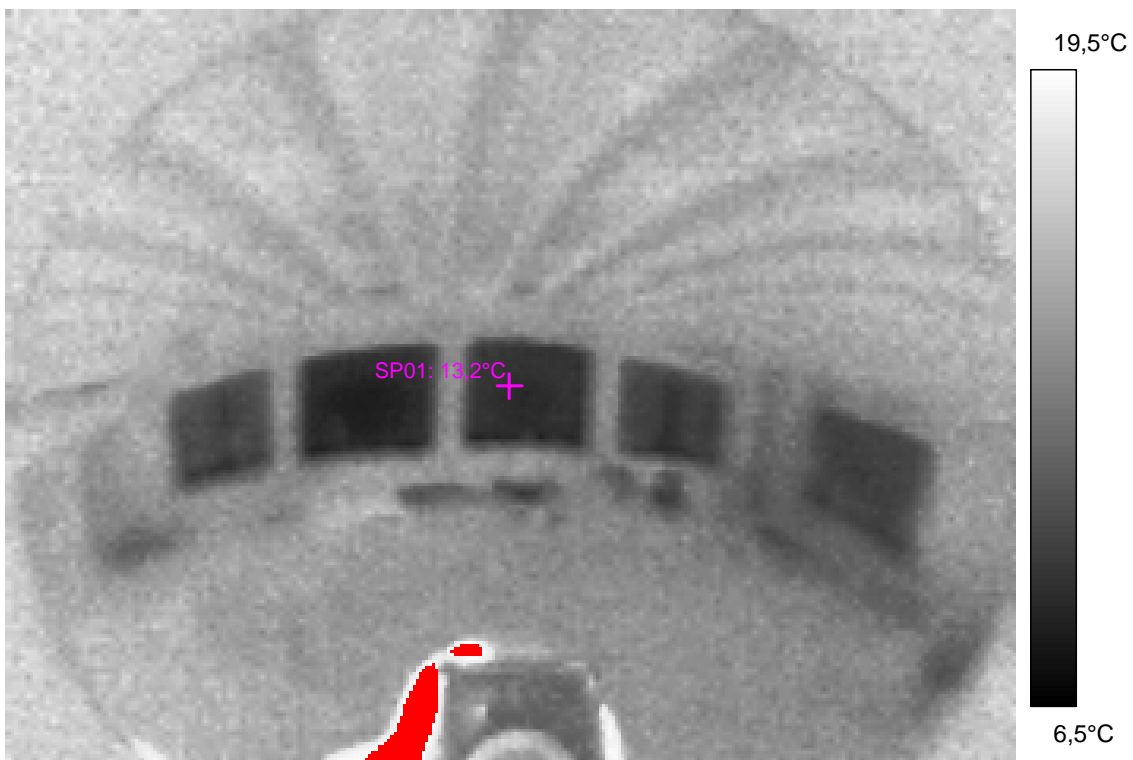
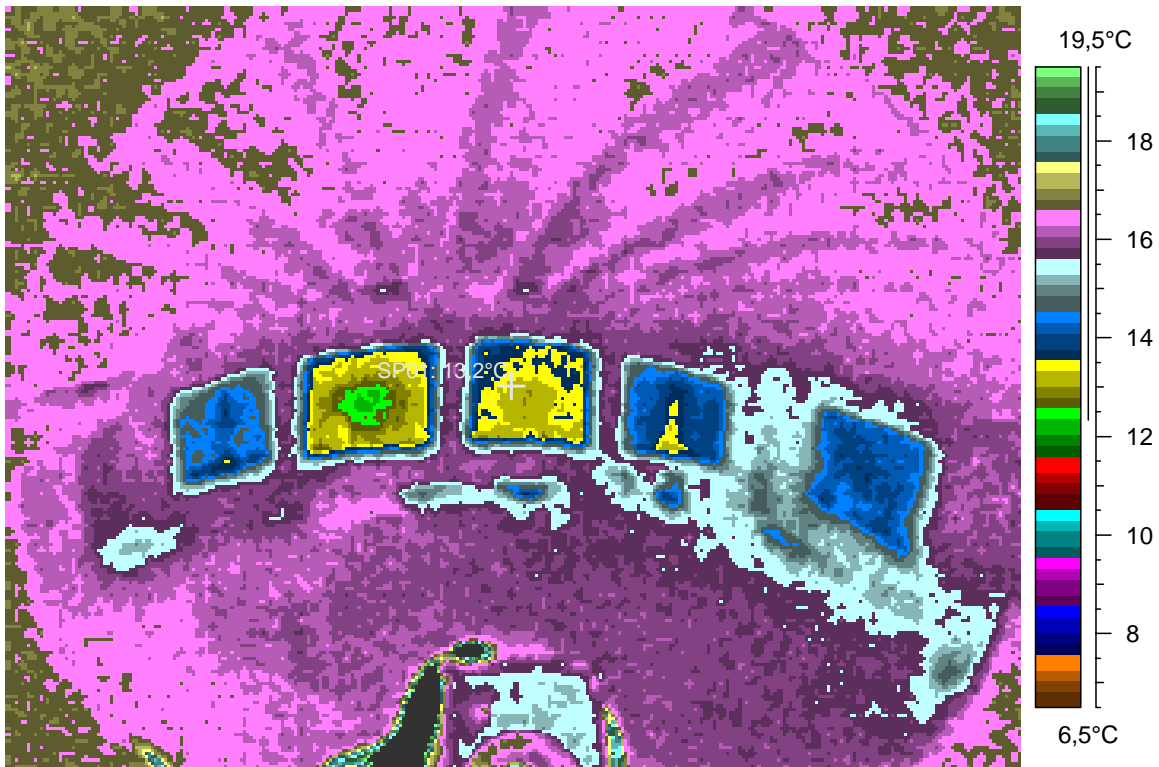
blabla

5 - Ir_1244.jpg

Label	Value
IR : max	28,2°C
IR : min	12,2°C
SP01	13,2°C

3.1.2008

21:11:48



comments:

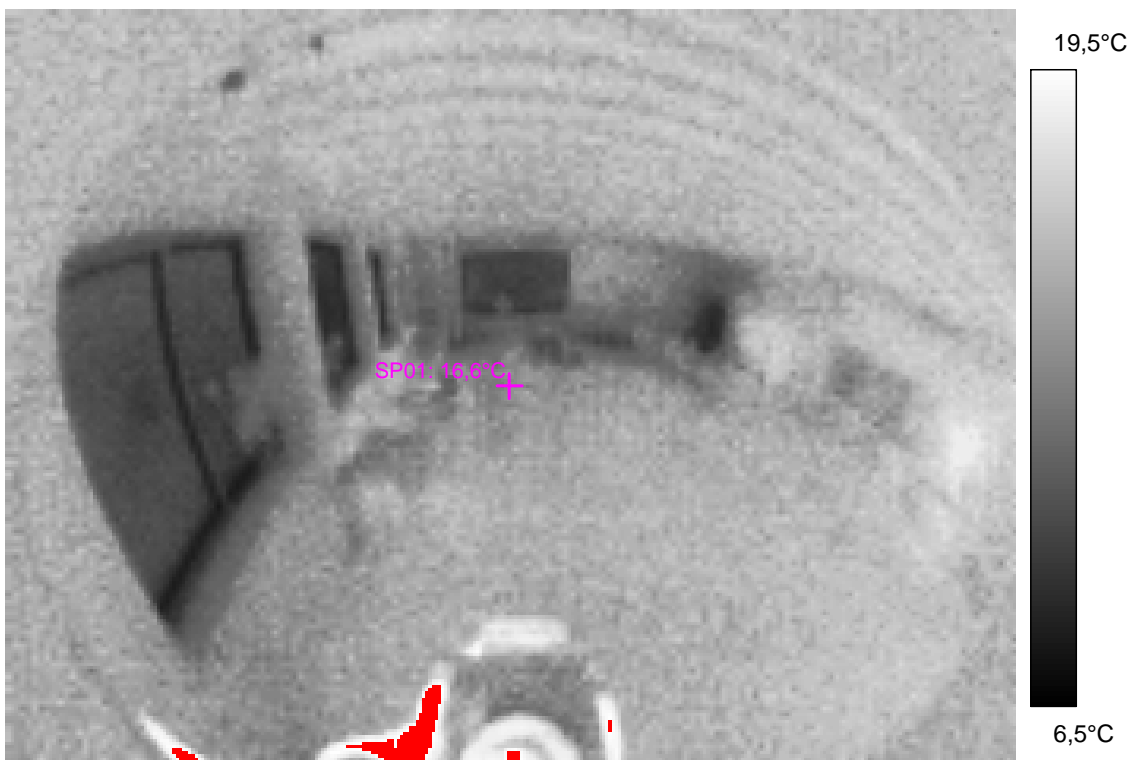
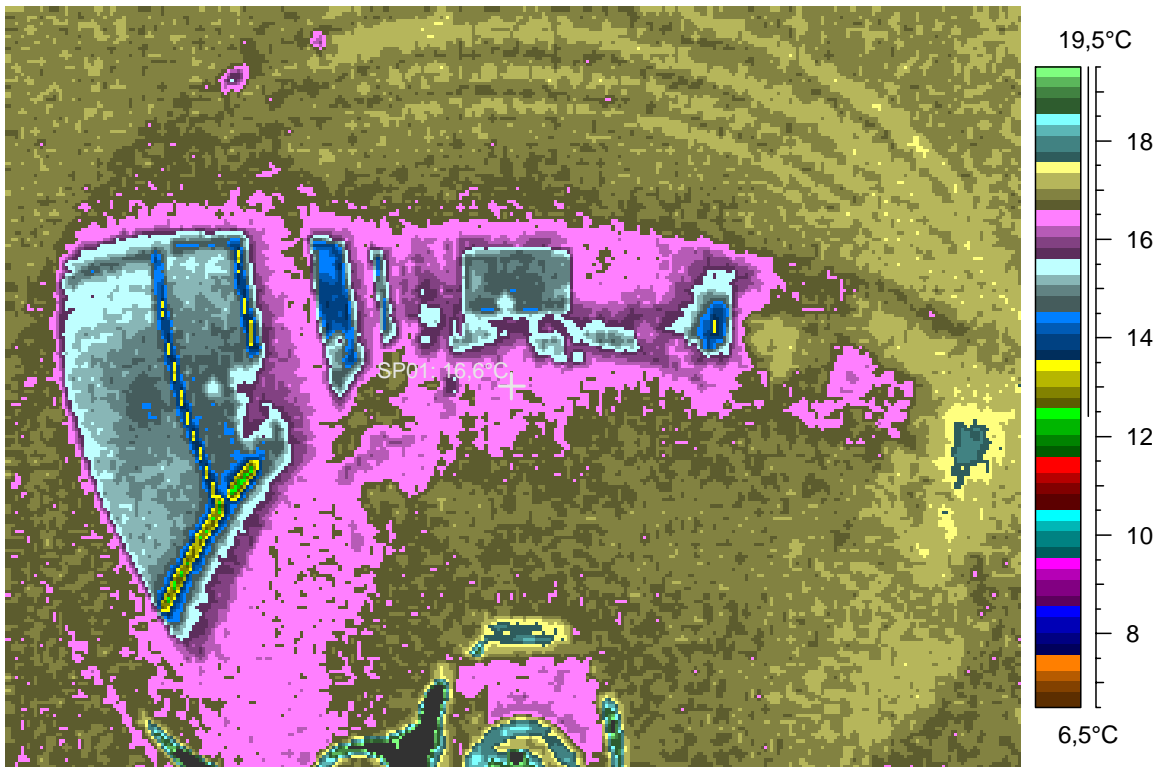
blabla

6 - Ir_1246.jpg

Label	Value
IR : max	25,9°C
IR : min	11,9°C
SP01	16,6°C

3.1.2008

21:15:29



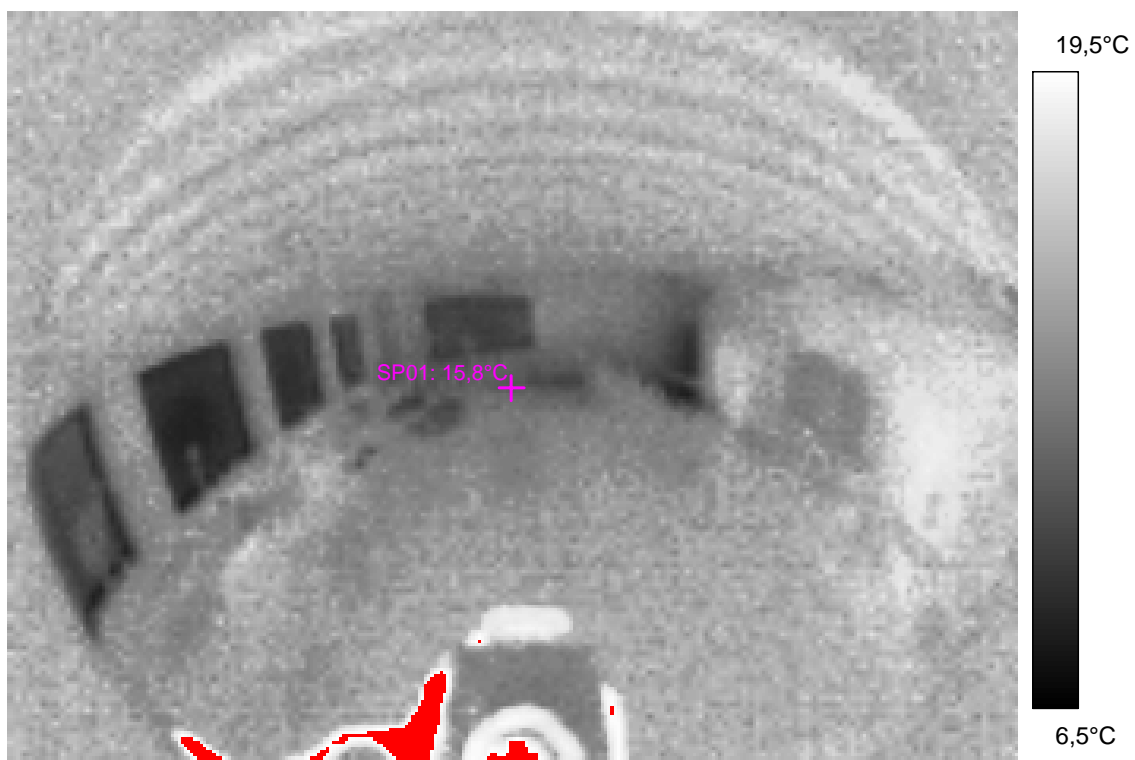
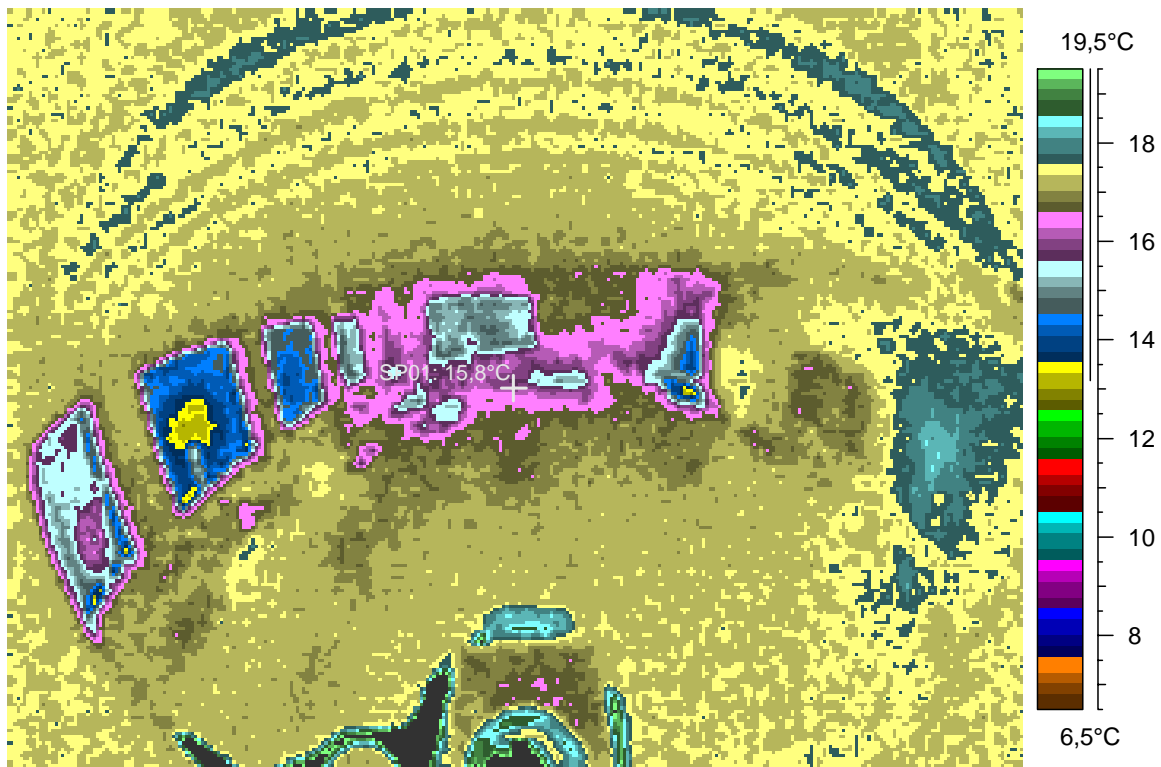
Pohled sálem na jih, z centra severní strany. Vlevo jsou dobře patrná dvě horší okna s deklarováním $u = 0.8$

7 - Ir_1247.jpg

Label	Value
IR : max	26,8°C
IR : min	13,0°C
SP01	15,8°C

3.1.2008

21:16:31



comments:

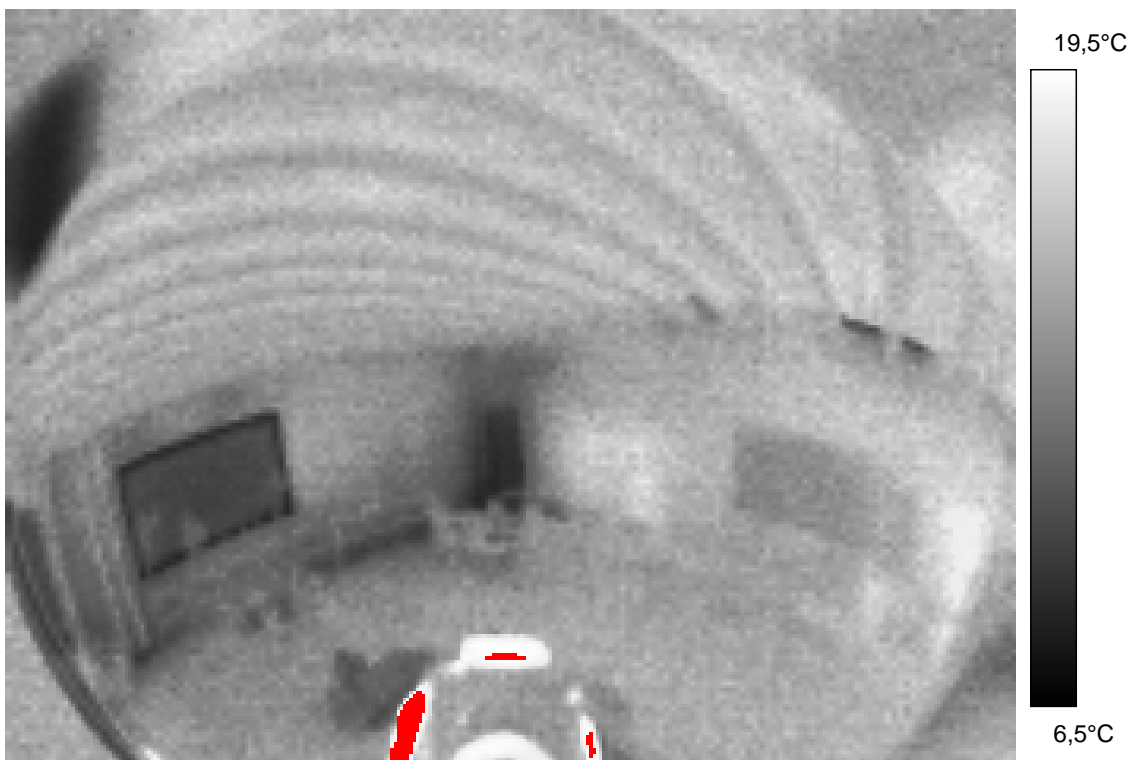
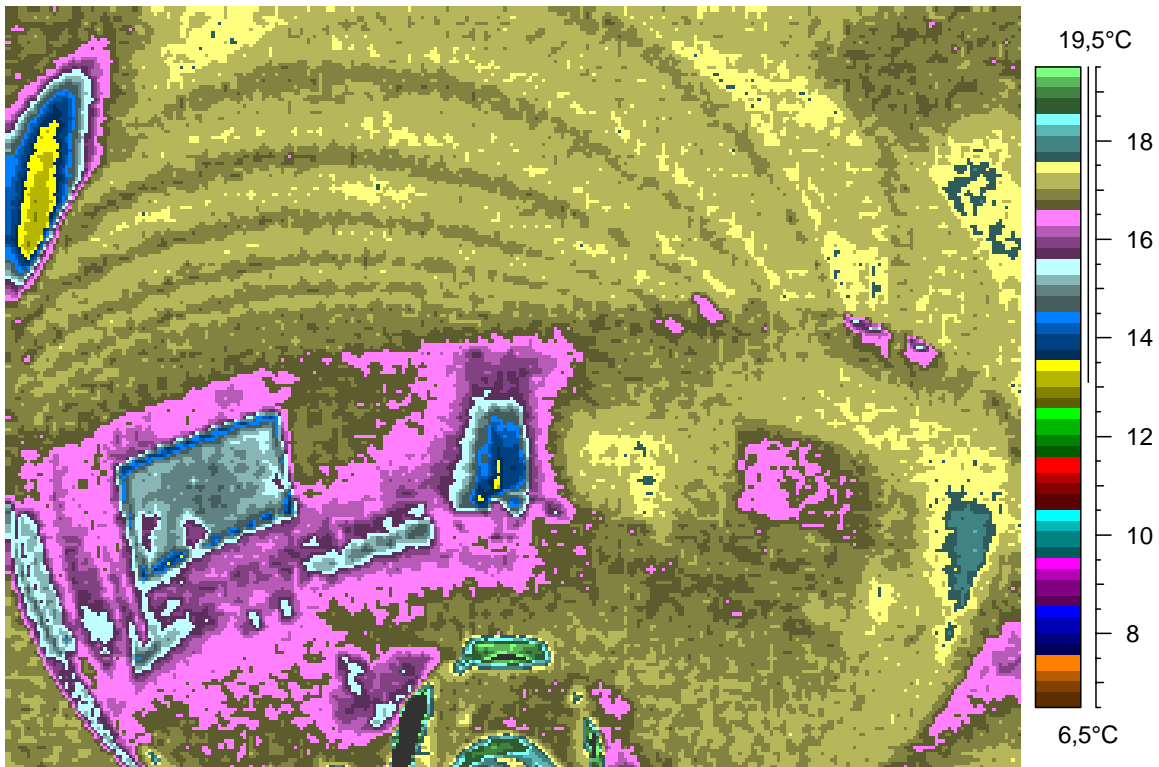
blabla

8 - Ir_1248.jpg

Label	Value
IR : max	28,3°C
IR : min	13,0°C

3.1.2008

21:22:10



Lecture hall in a concave mirror, image taken from its NE corner.

9 - Ir_1249.jpg

Label	Value
IR : max	22,8°C
IR : min	13,1°C

3.1.2008

21:22:23

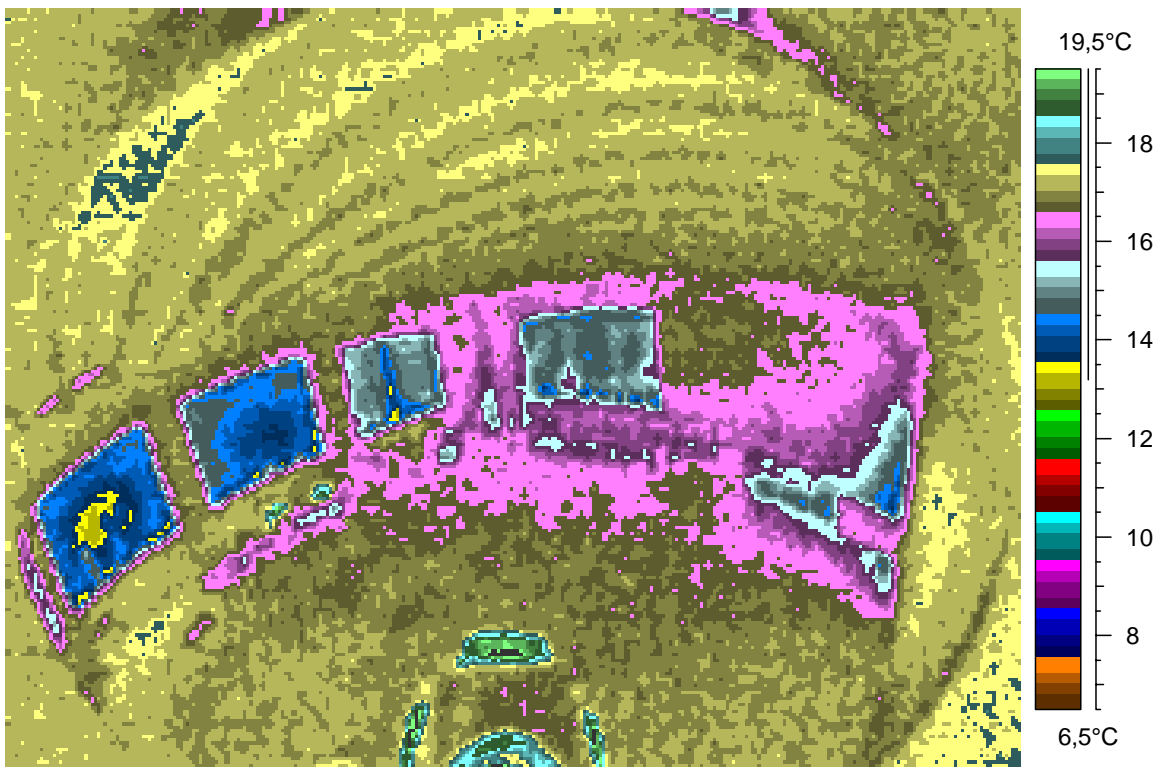


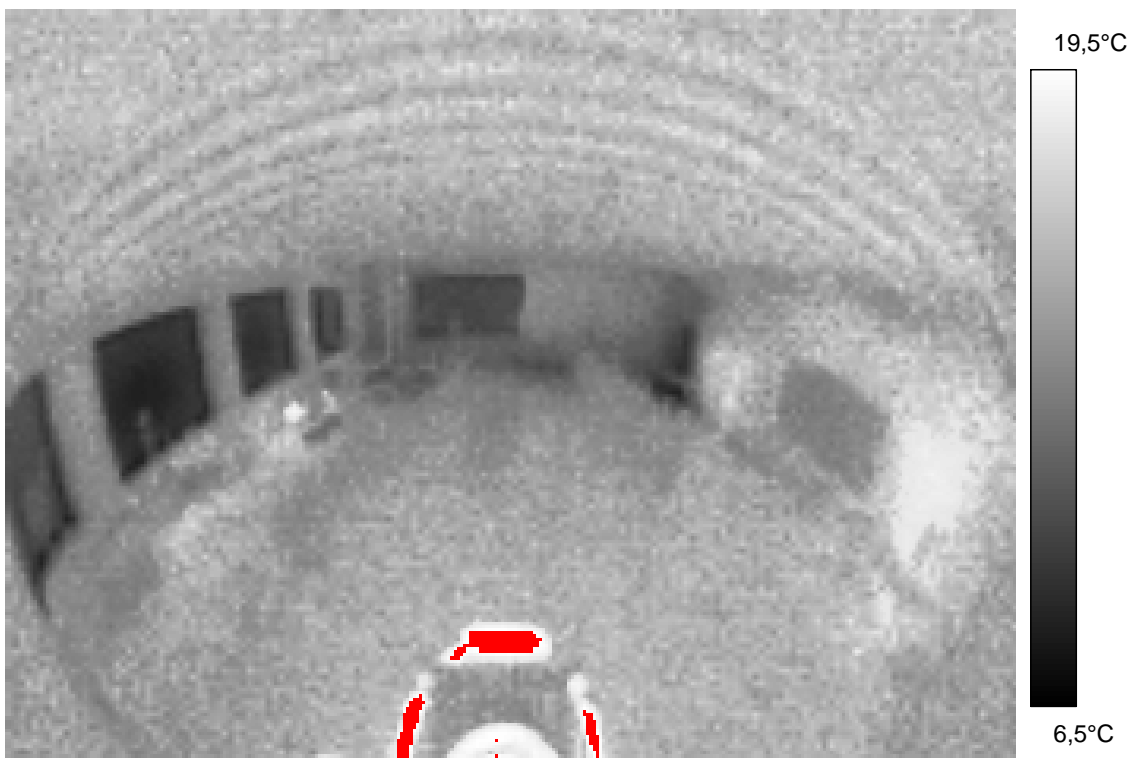
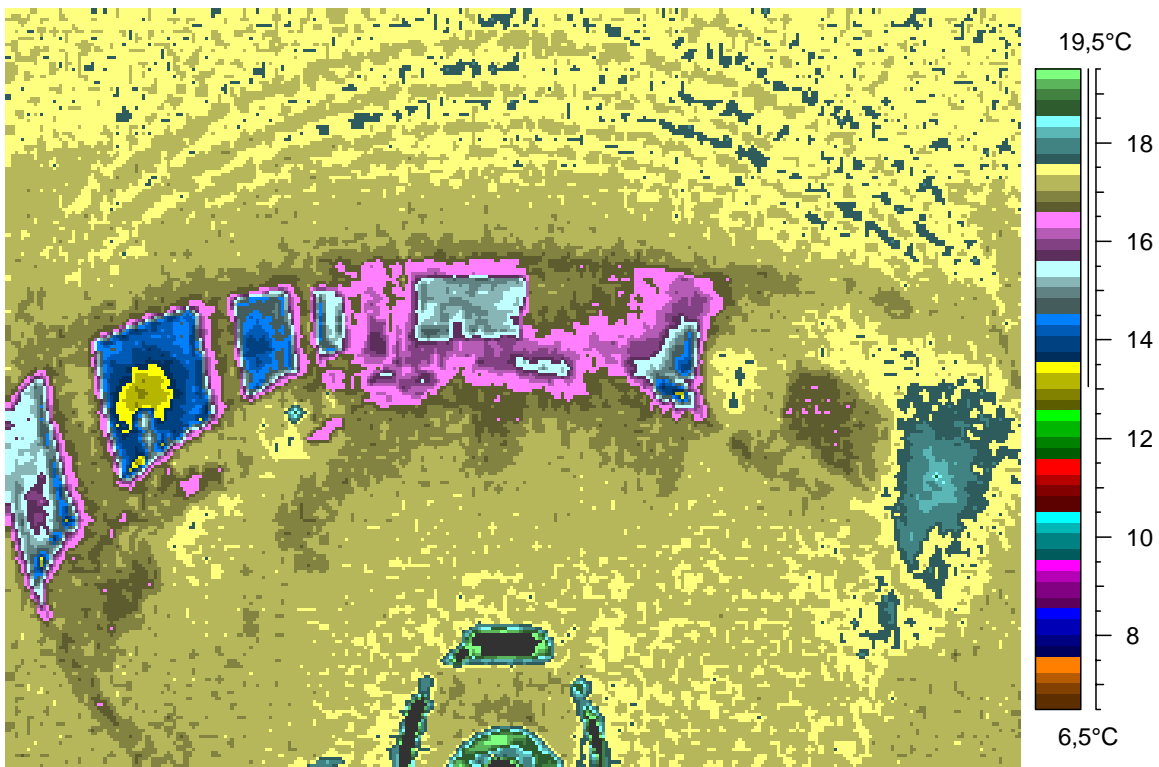
Image taken from the middle of its N wall (screen), the S fixed glazing near the centre.

10 - Ir_1250.jpg

Label	Value
IR : max	24,2°C
IR : min	12,9°C

3.1.2008

21:24:11



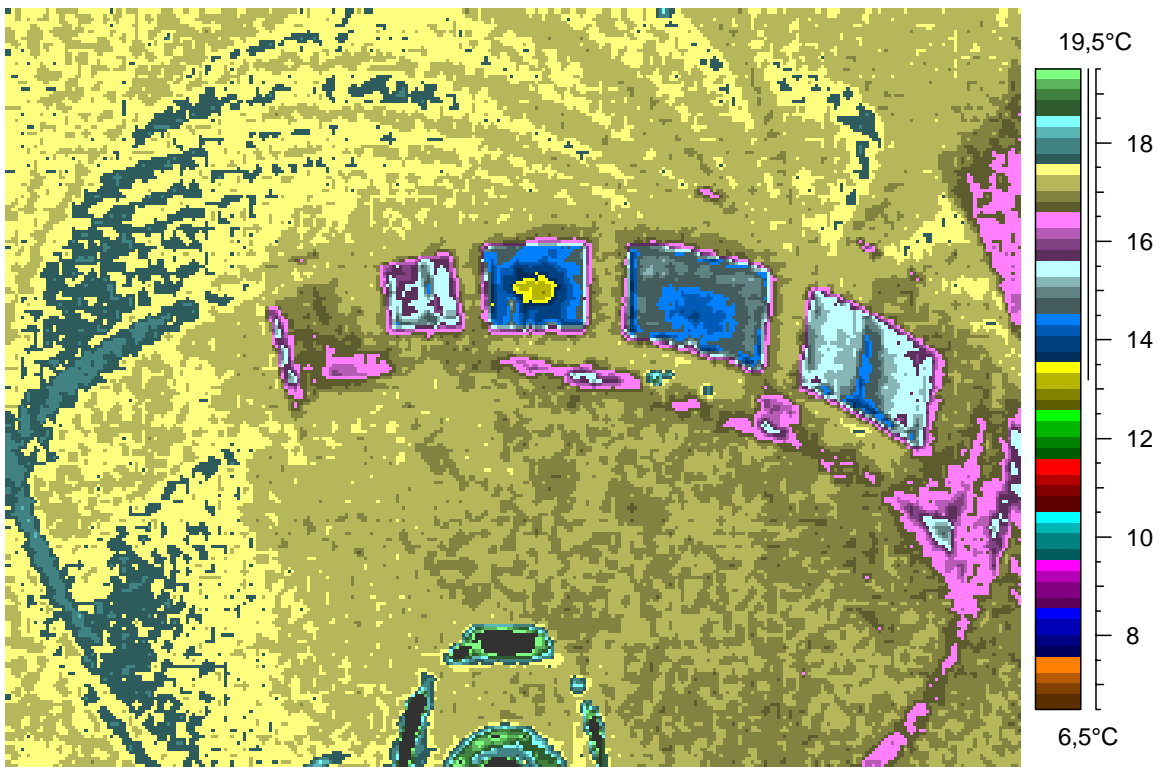
Mirror view from the SE corner.

11 - Ir_1251.jpg

Label	Value
IR : max	24,7°C
IR : min	13,0°C

3.1.2008

21:24:28



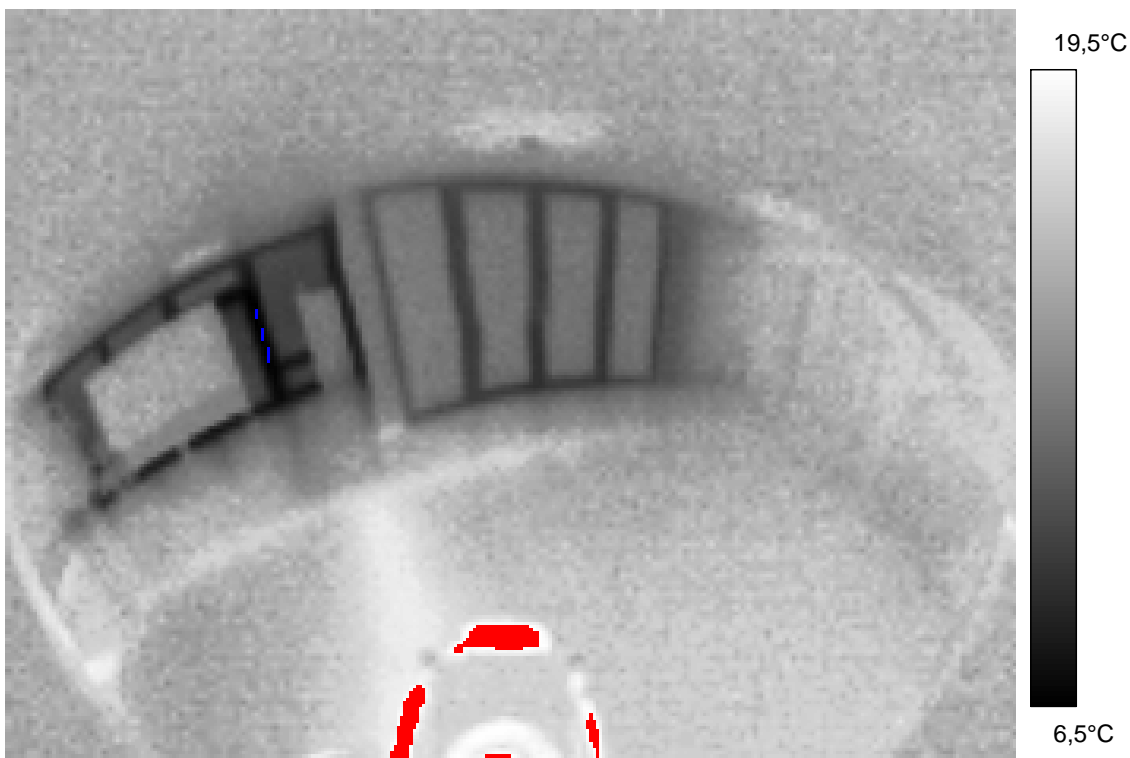
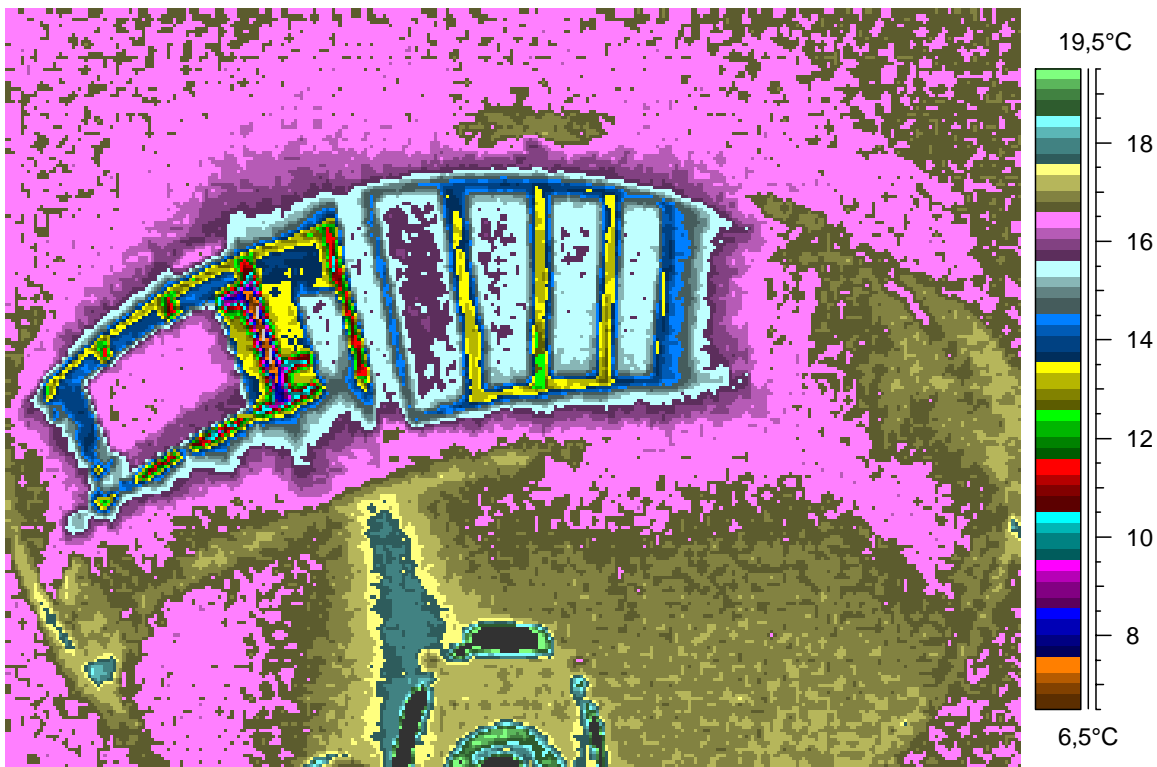
Mirror view of the foyer floor, glazing and ceiling. Taken from near the middle of the opposing wall.

12 - Ir_1252.jpg

Label	Value
IR : max	26,6°C
IR : min	5,9°C

3.1.2008

21:25:30



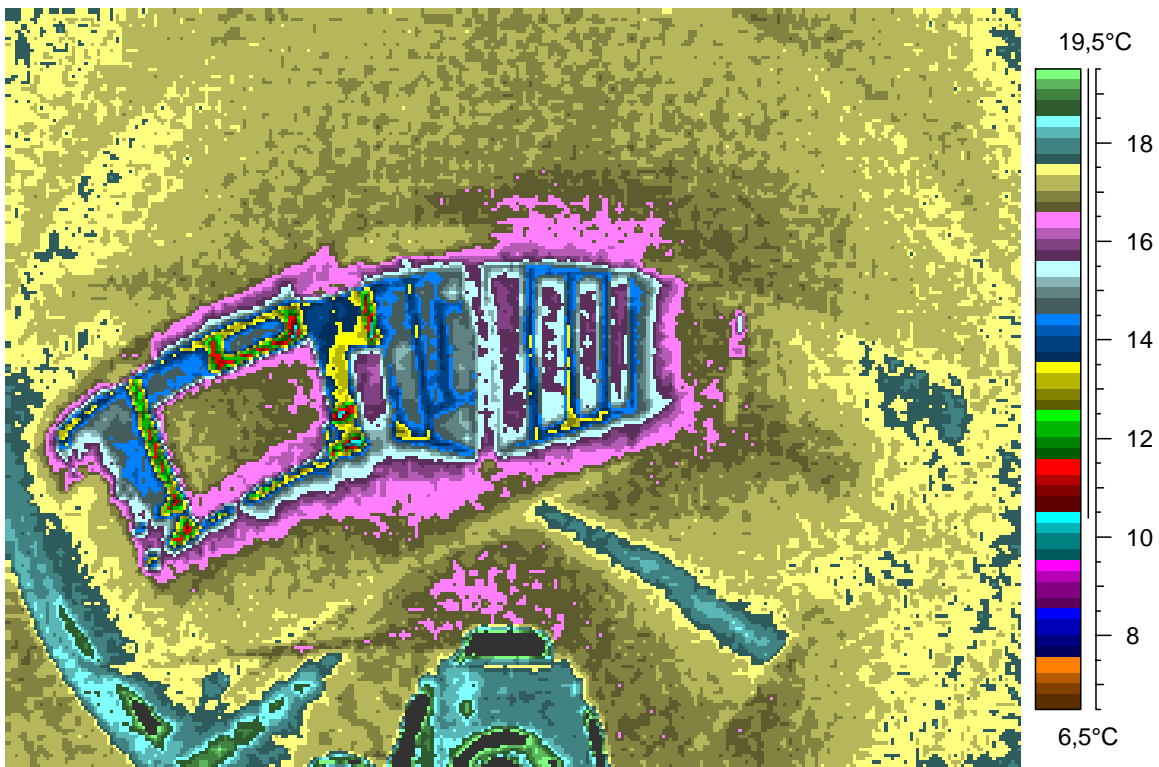
Taken from the NE corner. Warm area at left, in front of glazing, is a large poster. May be used as a reference temp. ground,

13 - Ir_1253.jpg

Label	Value
IR : max	27,6°C
IR : min	9,7°C

3.1.2008

21:29:04



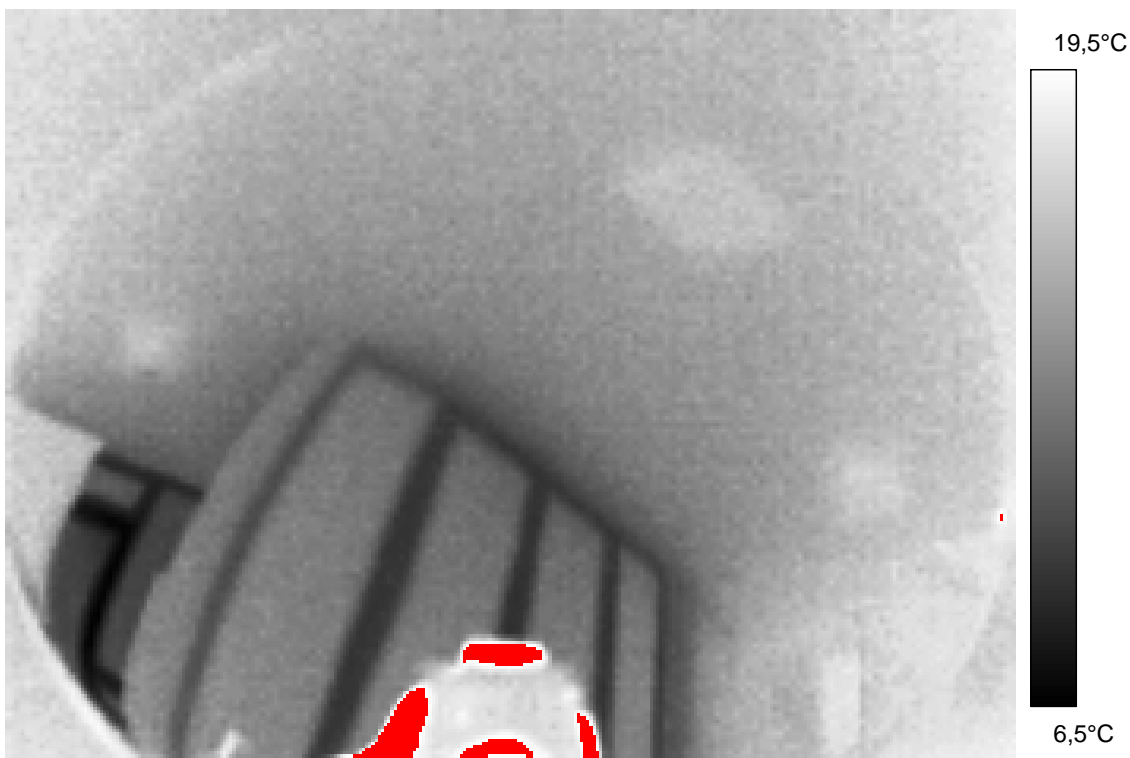
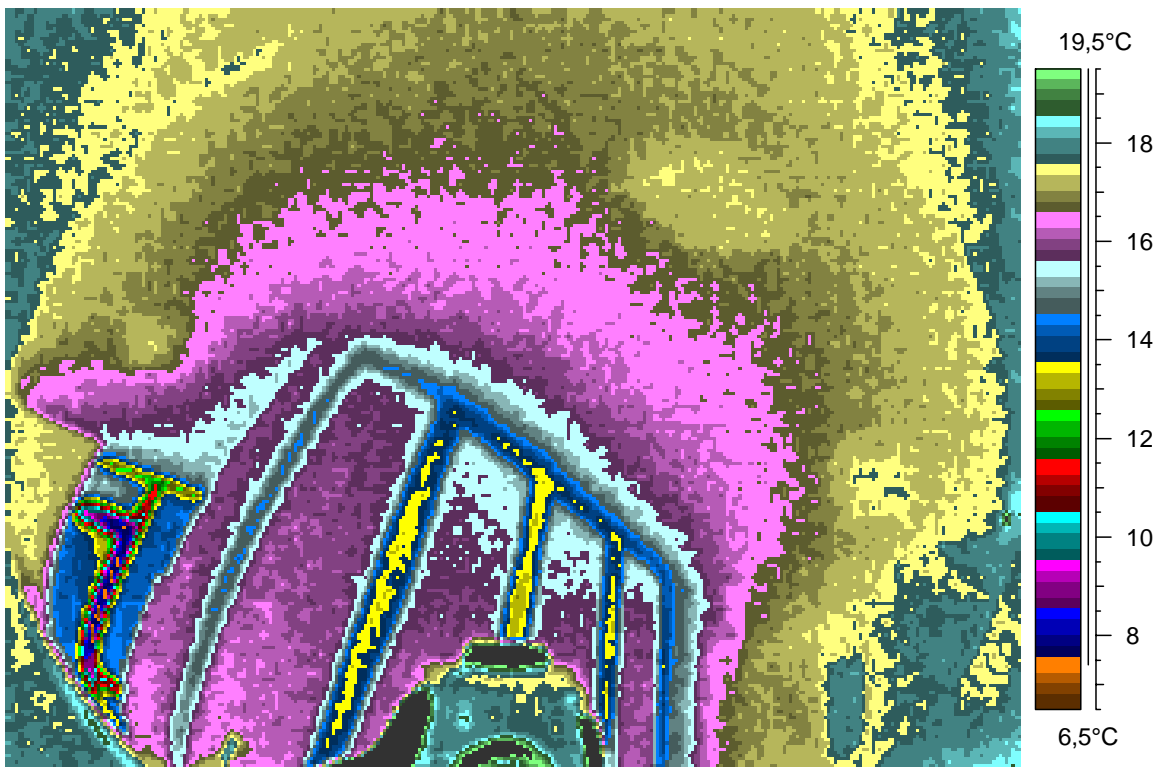
Ceiling near the foyer glazing. The thermal bridge due to a concrete ceiling protruding from a buffer zone is apparent.

14 - Ir_1254.jpg

Label	Value
IR : max	31,2°C
IR : min	6,9°C

3.1.2008

21:31:31



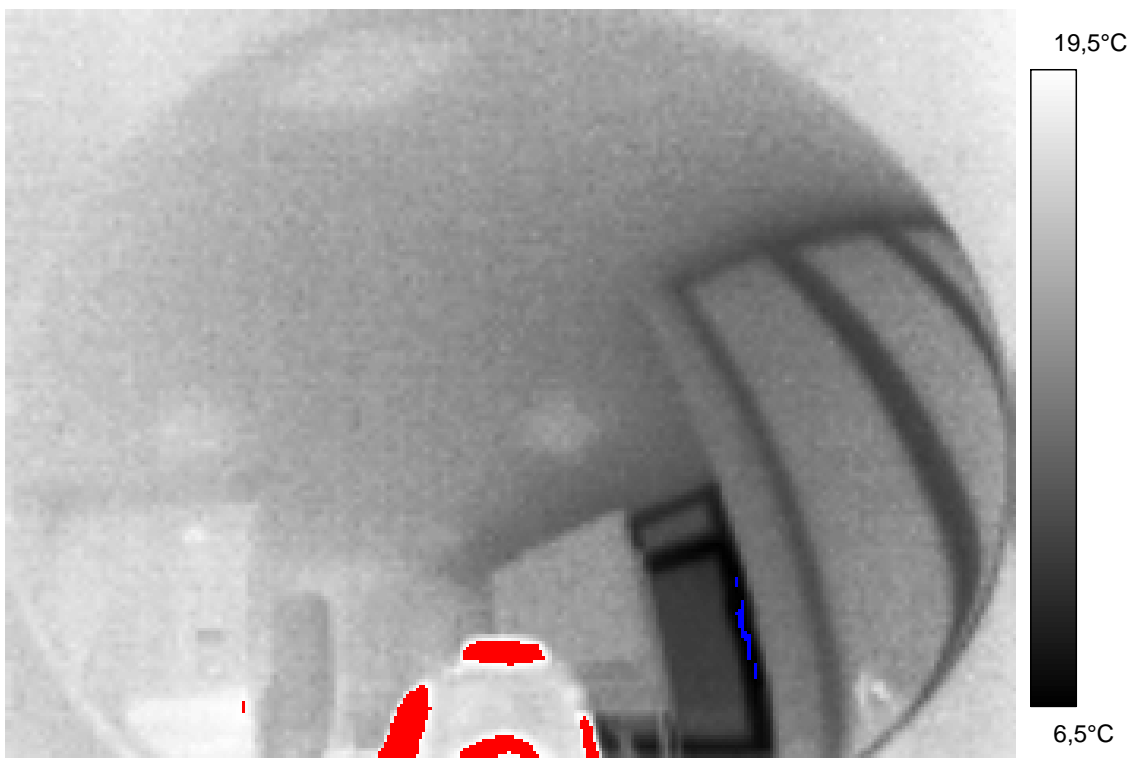
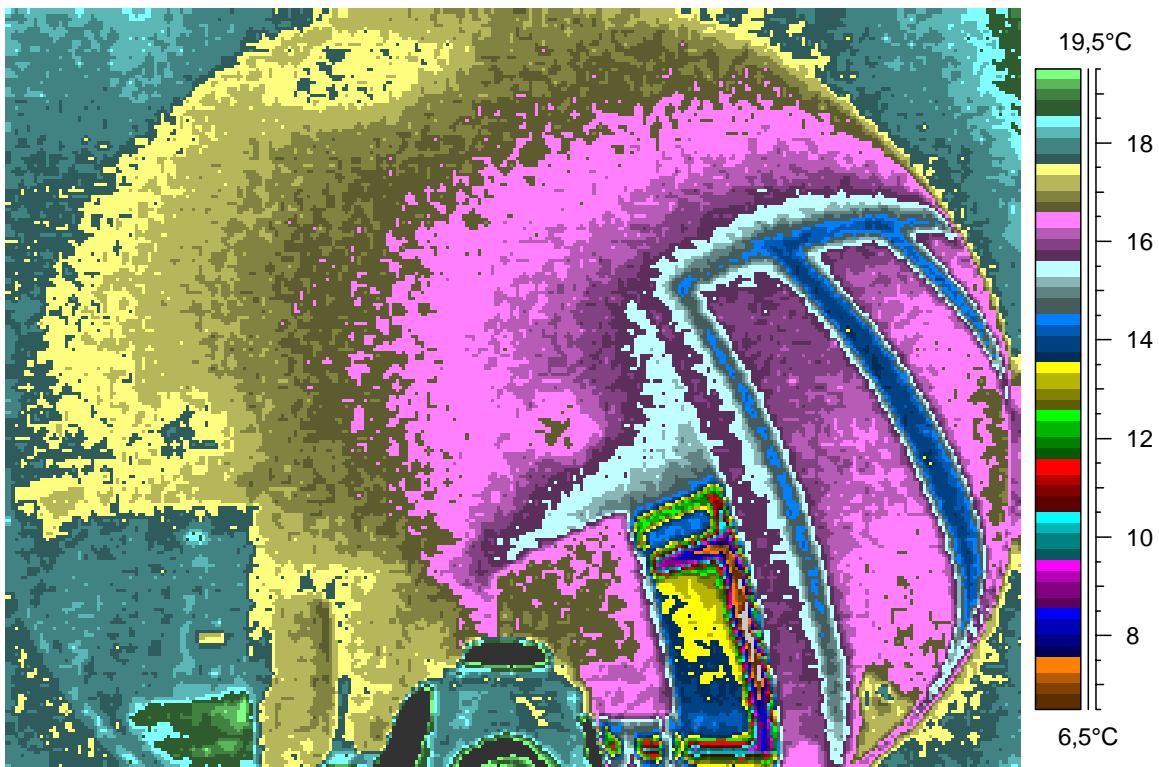
Further parts of the ceiling in the foyer, 5 images. Trying to find any inhomogeneity due to a failure of the roof embrane.

15 - Ir_1255.jpg

Label	Value
IR : max	30,4°C
IR : min	5,6°C

3.1.2008

21:31:39



comments:

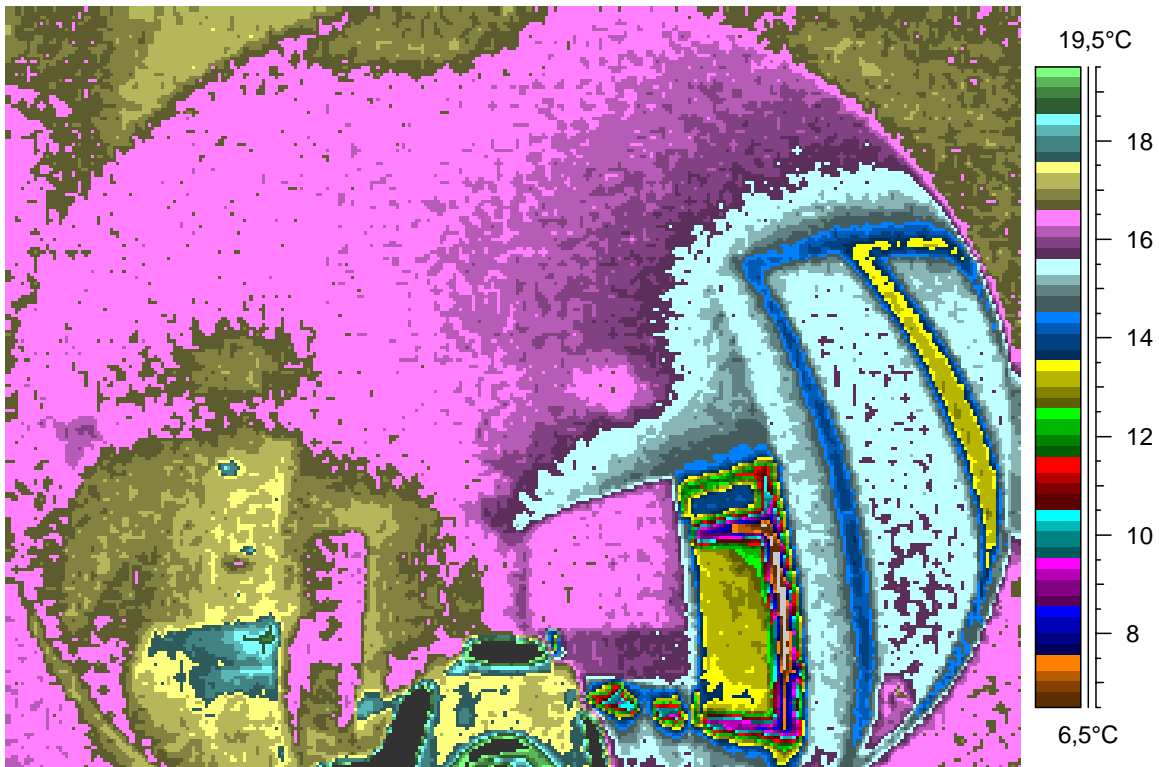
blabla

16 - Ir_1256.jpg

Label	Value
IR : max	30,1°C
IR : min	5,1°C

3.1.2008

21:31:46



comments:

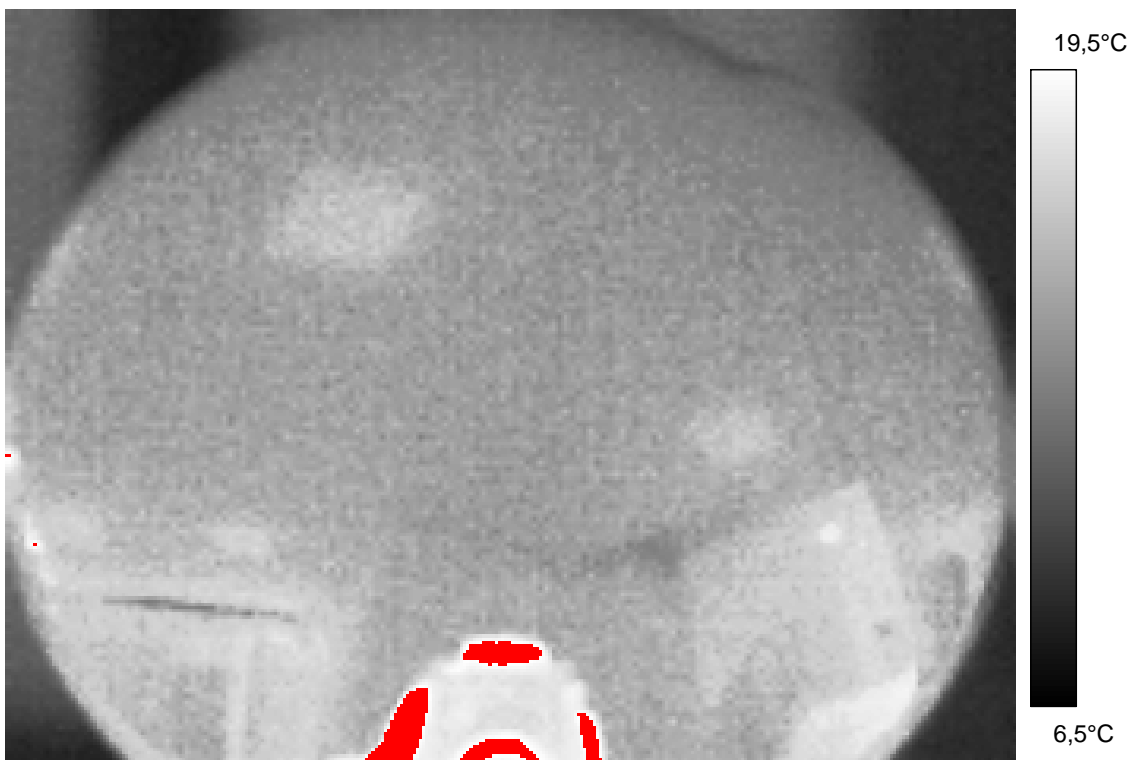
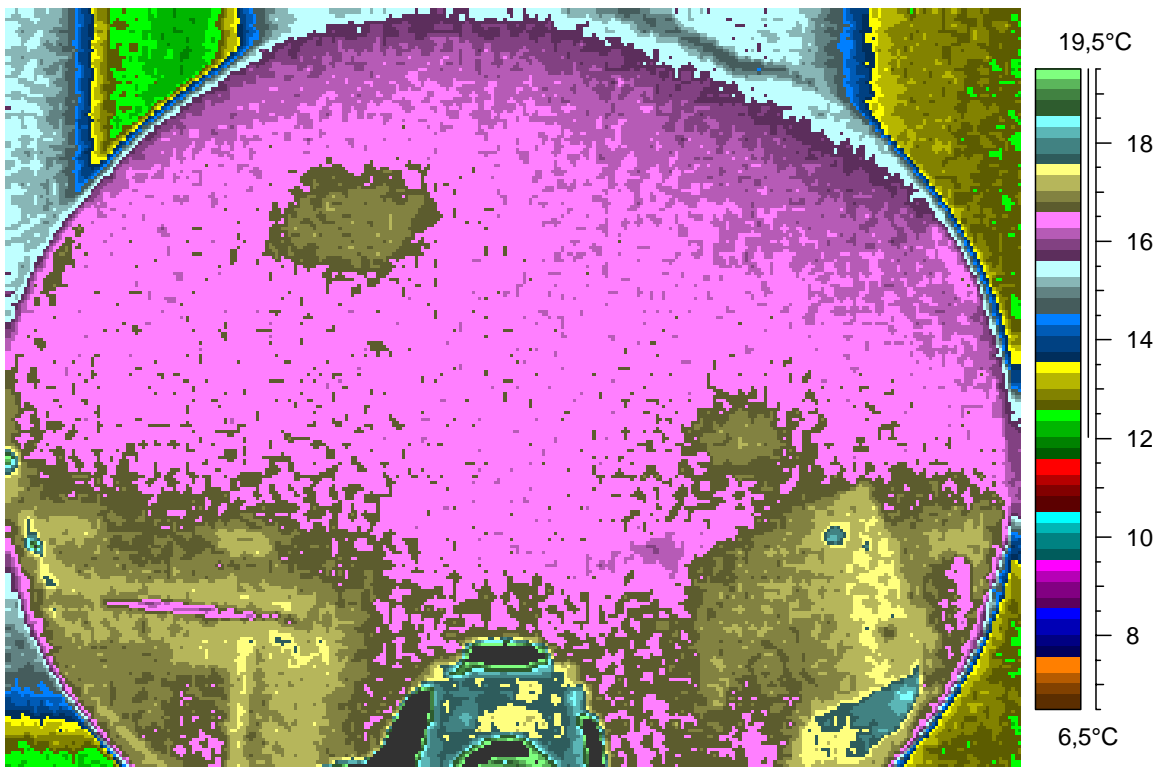
blabla

17 - Ir_1257.jpg

Label	Value
IR : max	30,1°C
IR : min	11,9°C

3.1.2008

21:31:55



comments:

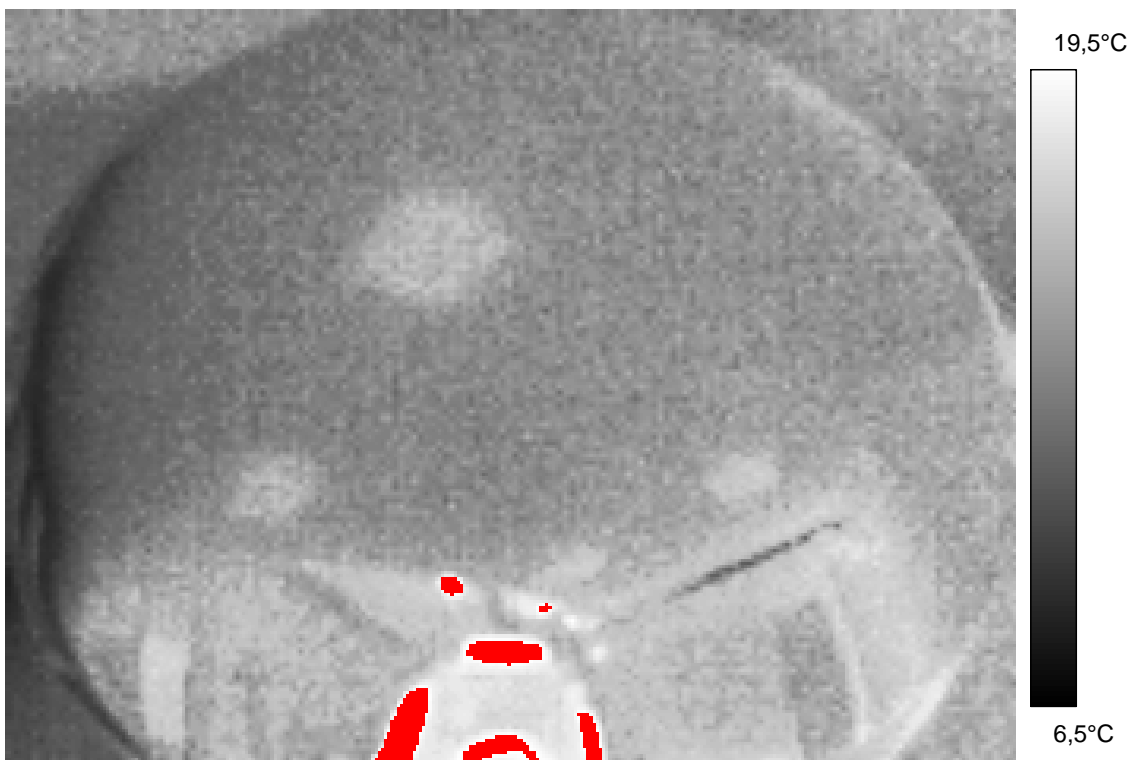
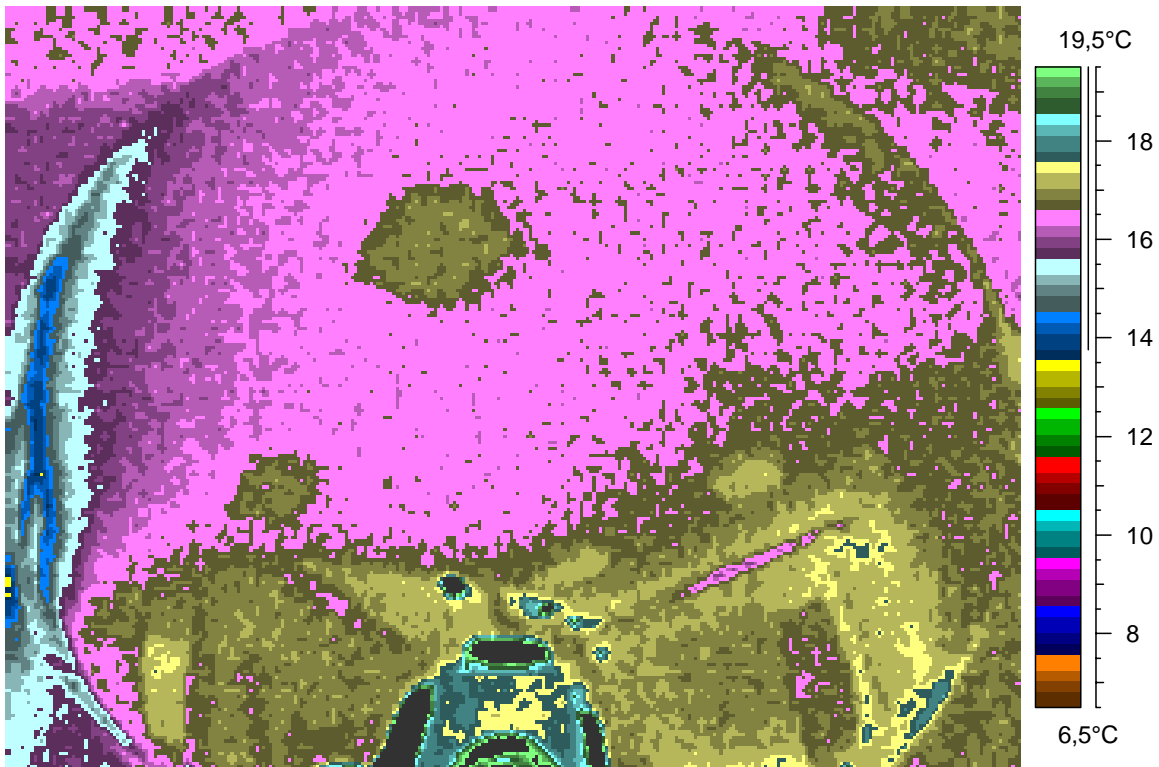
blabla

18 - Ir_1258.jpg

Label	Value
IR : max	29,8°C
IR : min	13,4°C

3.1.2008

21:32:03



comments:

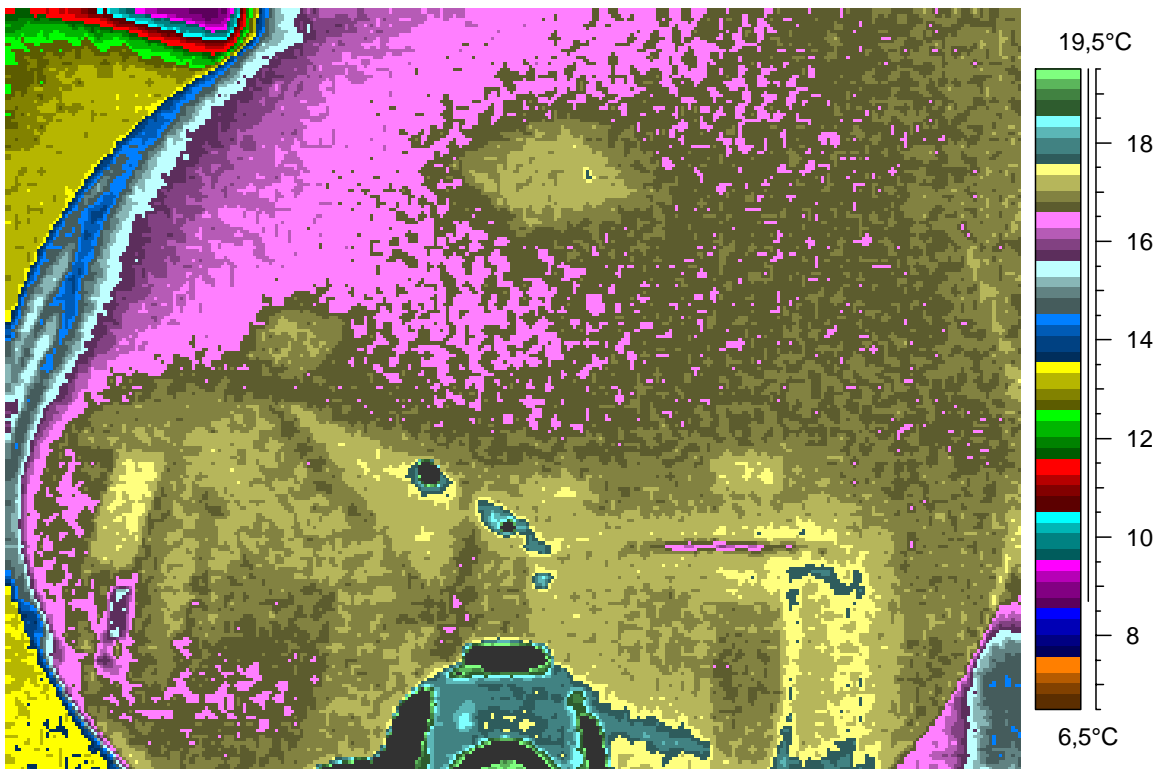
blabla

19 - Ir_1259.jpg

Label	Value
IR : max	30,6°C
IR : min	8,6°C

3.1.2008

21:33:33



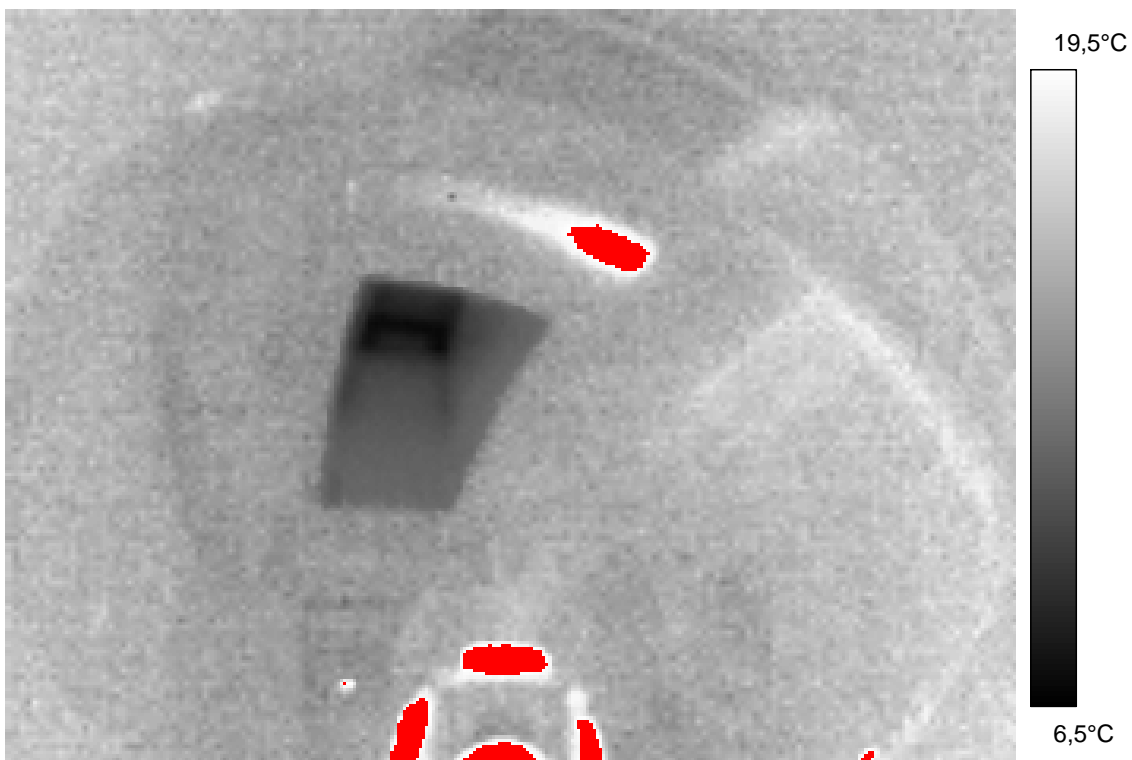
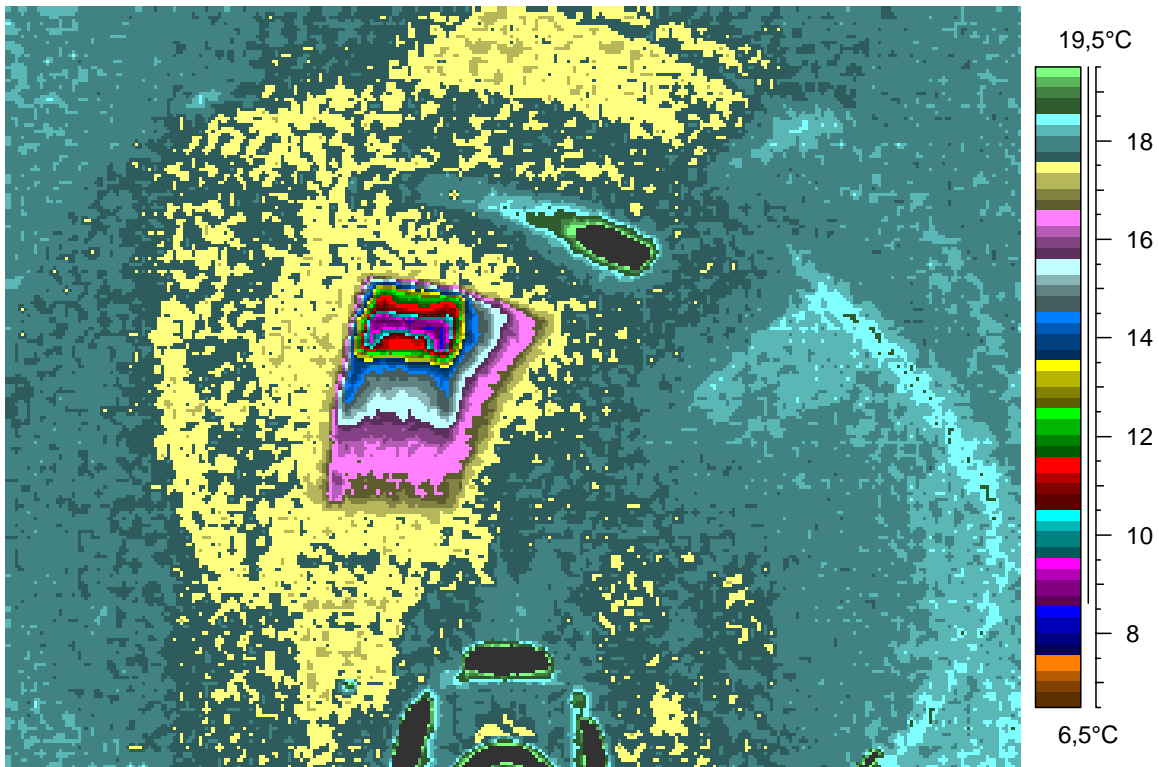
Skylight in the dormitory, 3 images.

20 - Ir_1260.jpg

Label	Value
IR : max	27,3°C
IR : min	8,4°C

3.1.2008

21:35:06



comments:

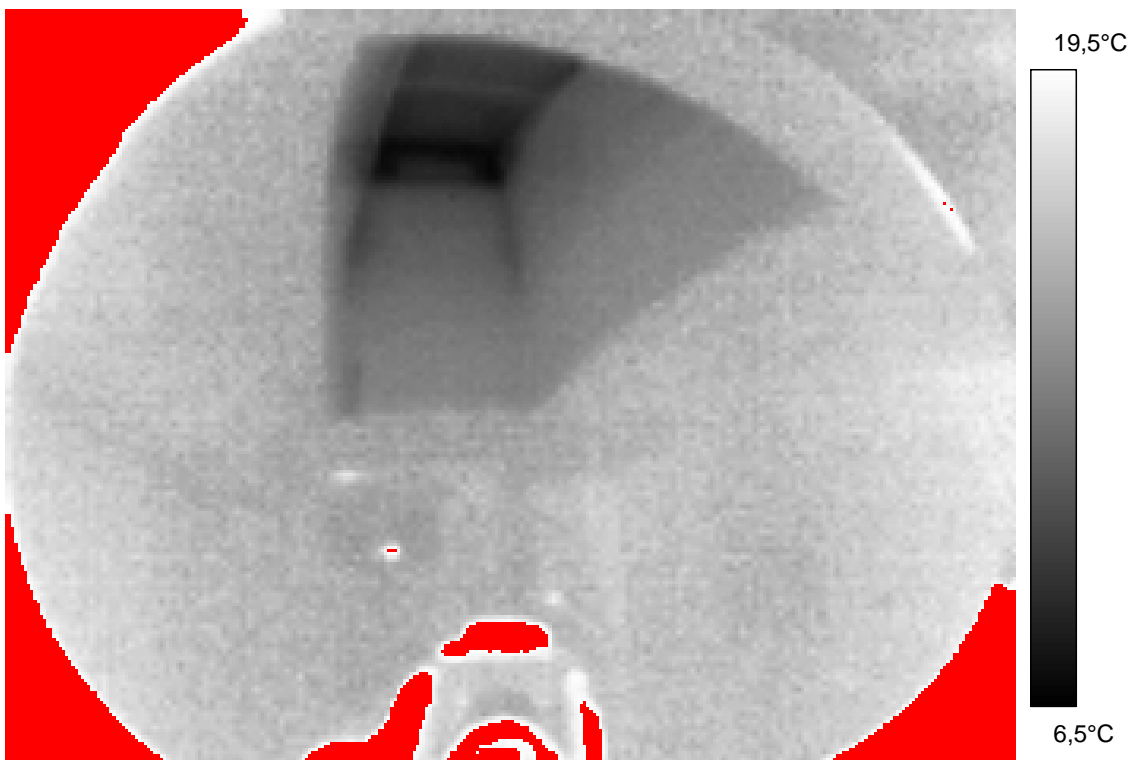
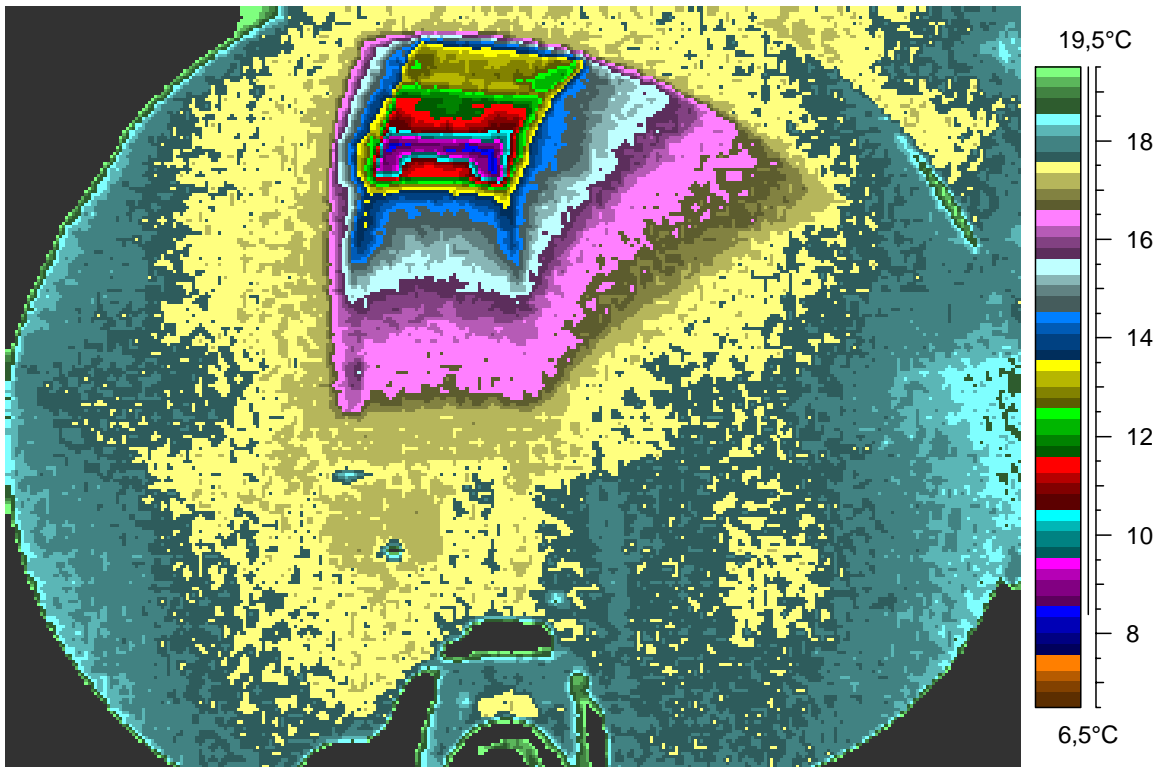
blabla

21 - Ir_1261.jpg

Label	Value
IR : max	33,2°C
IR : min	8,2°C

3.1.2008

21:35:25



comments:

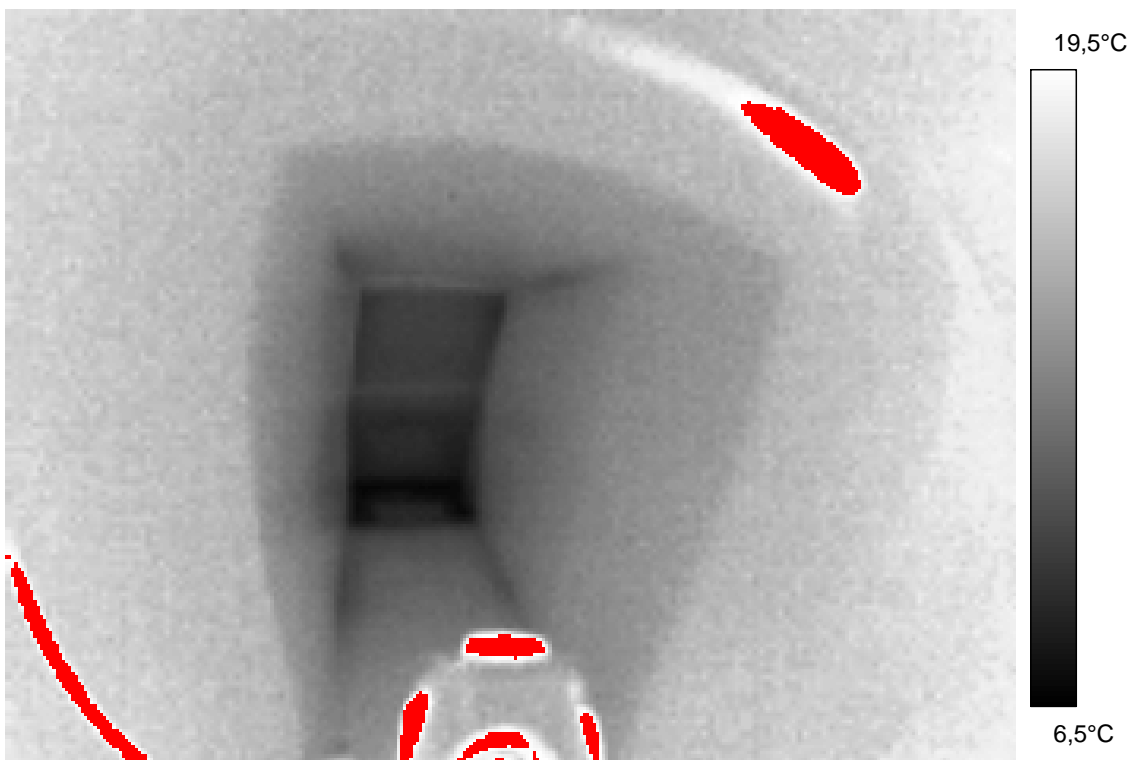
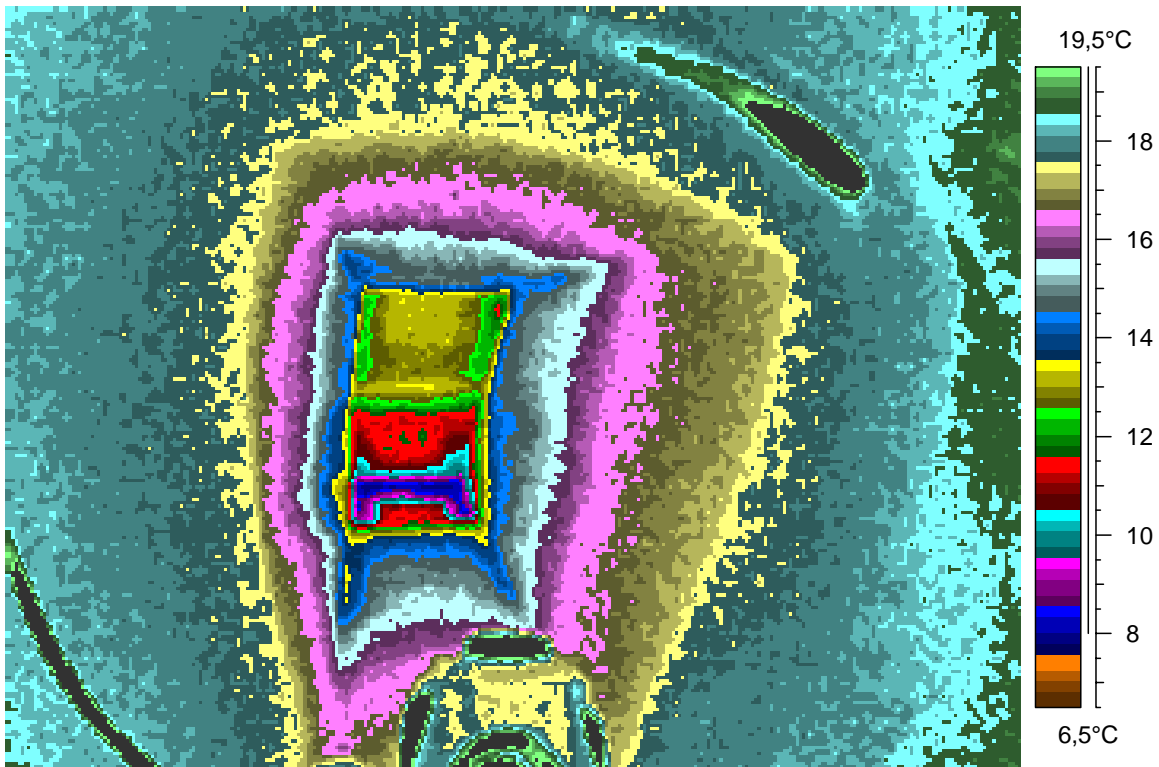
blabla

22 - Ir_1262.jpg

Label	Value
IR : max	24,9°C
IR : min	7,9°C

3.1.2008

21:35:42



comments:

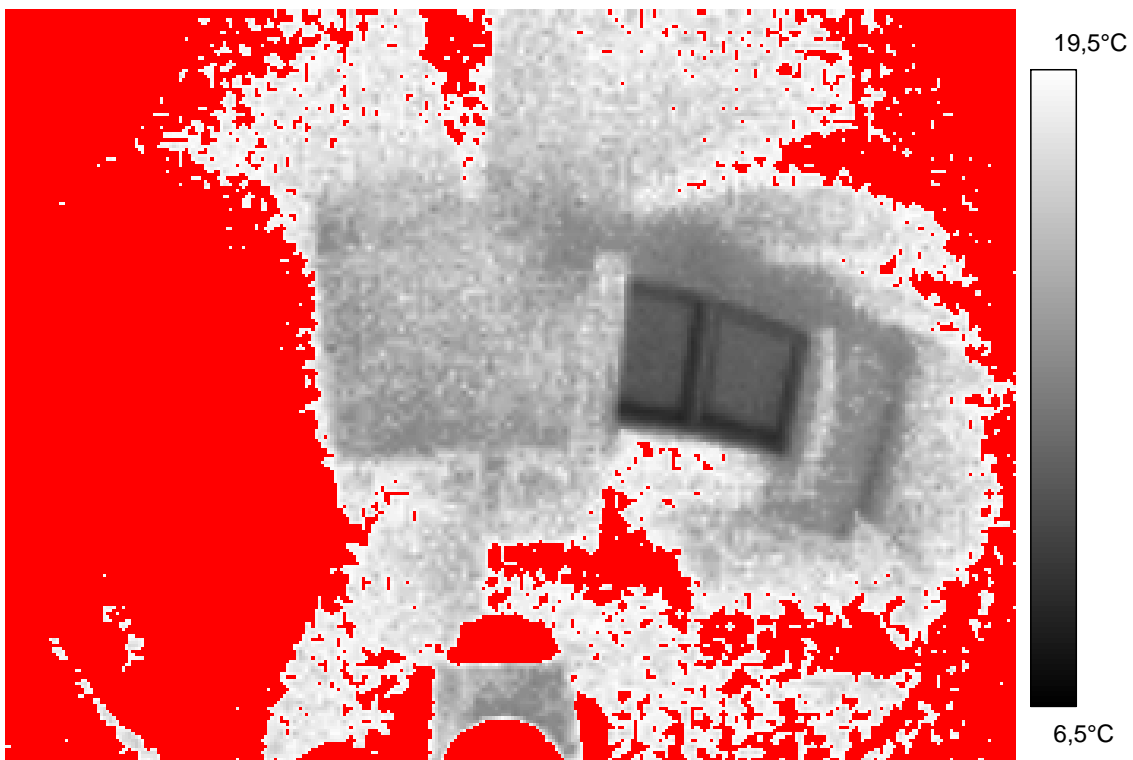
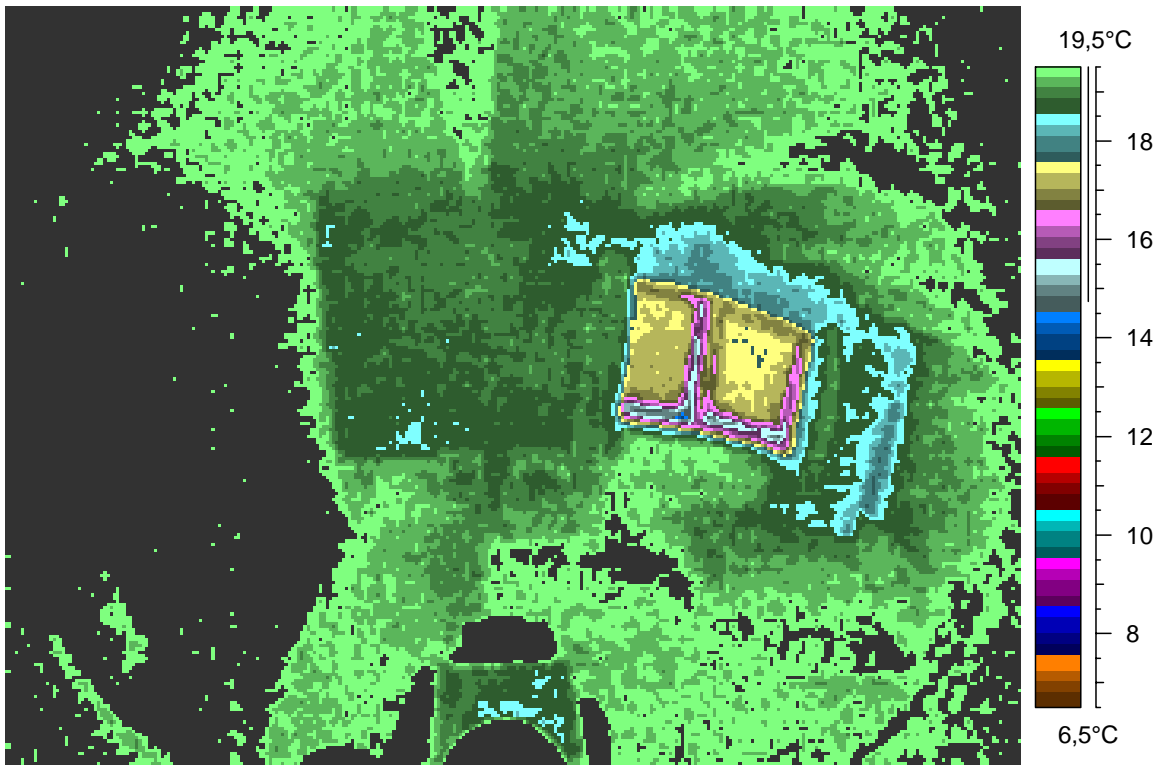
blabla

23 - Ir_1263.jpg

Label	Value
IR : max	26,5°C
IR : min	14,0°C

3.1.2008

21:37:24



comments:

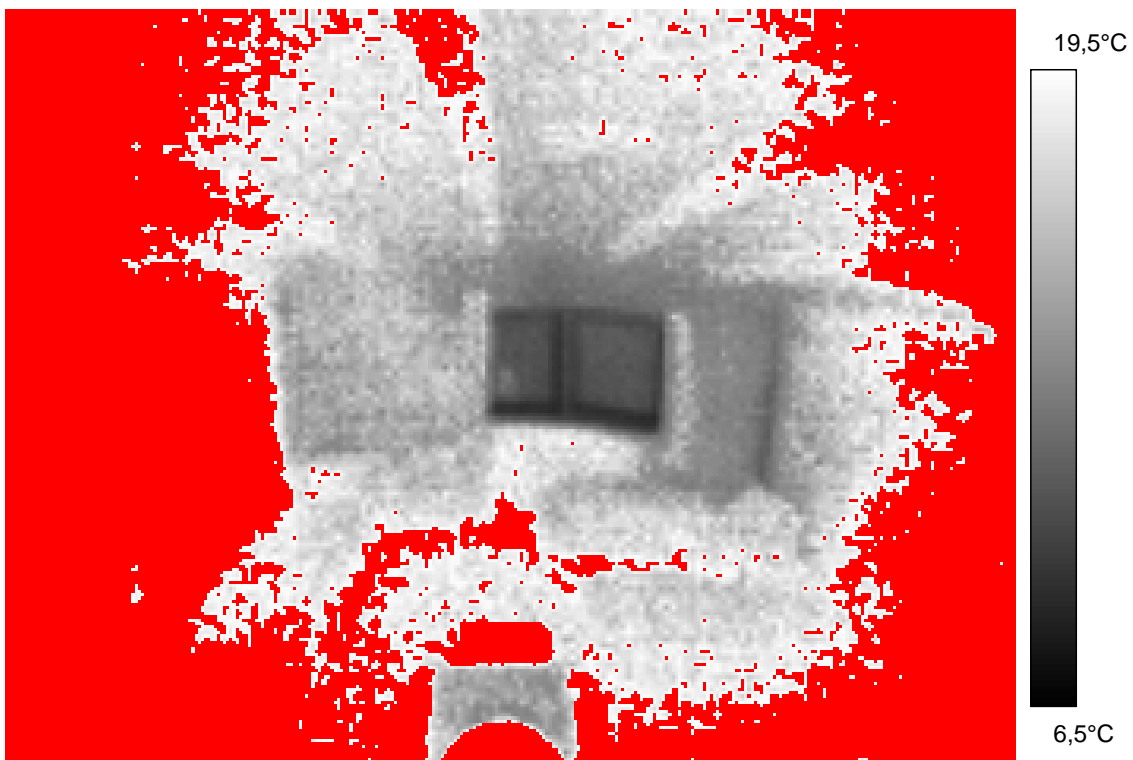
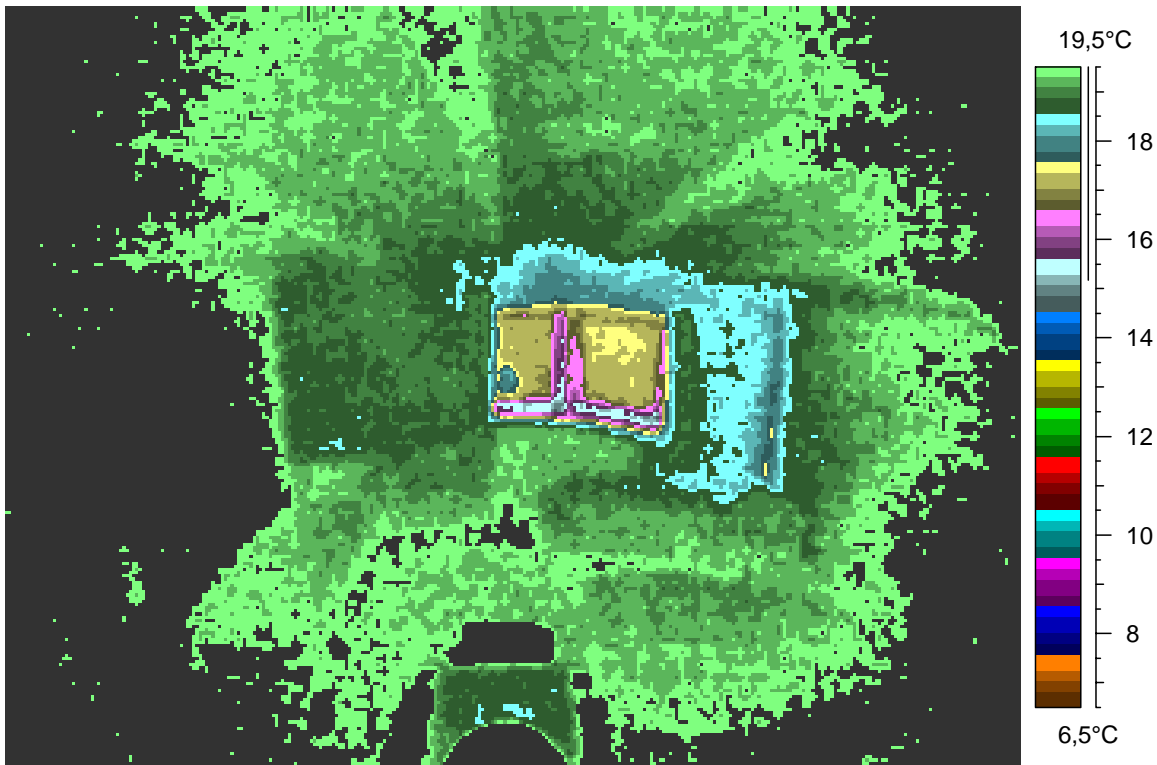
blabla

24 - Ir_1264.jpg

Label	Value
IR : max	26,3°C
IR : min	14,7°C

3.1.2008

21:37:39



comments:

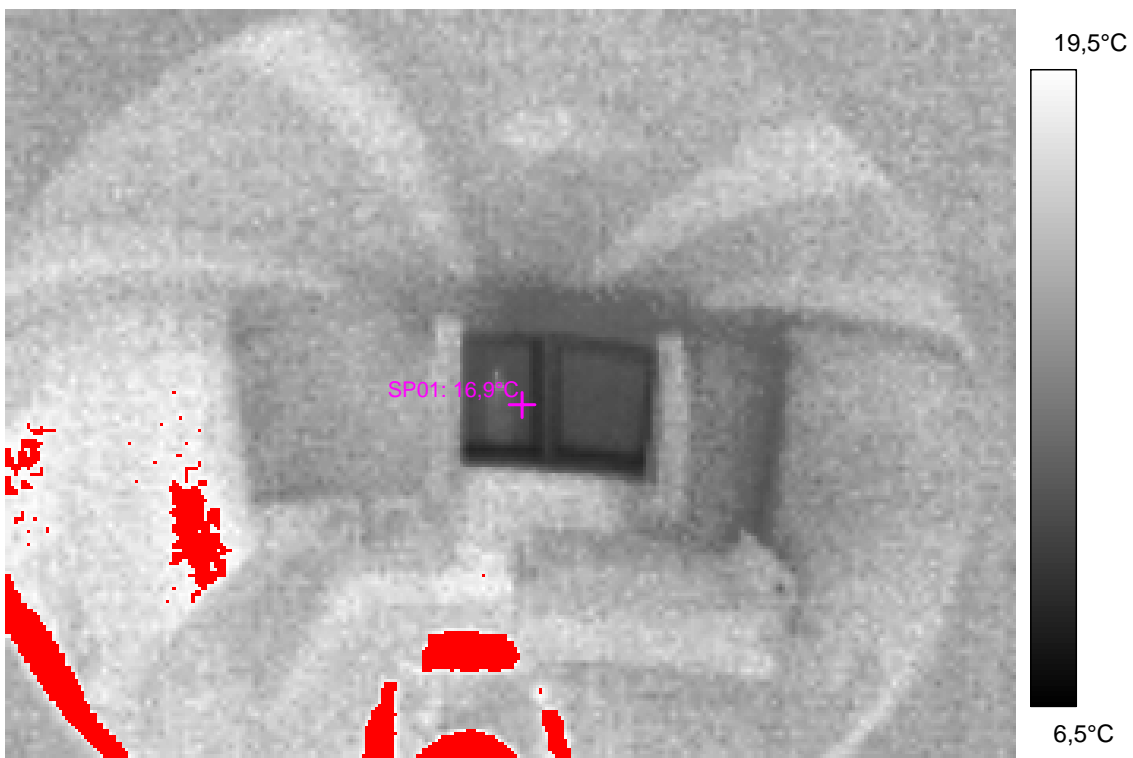
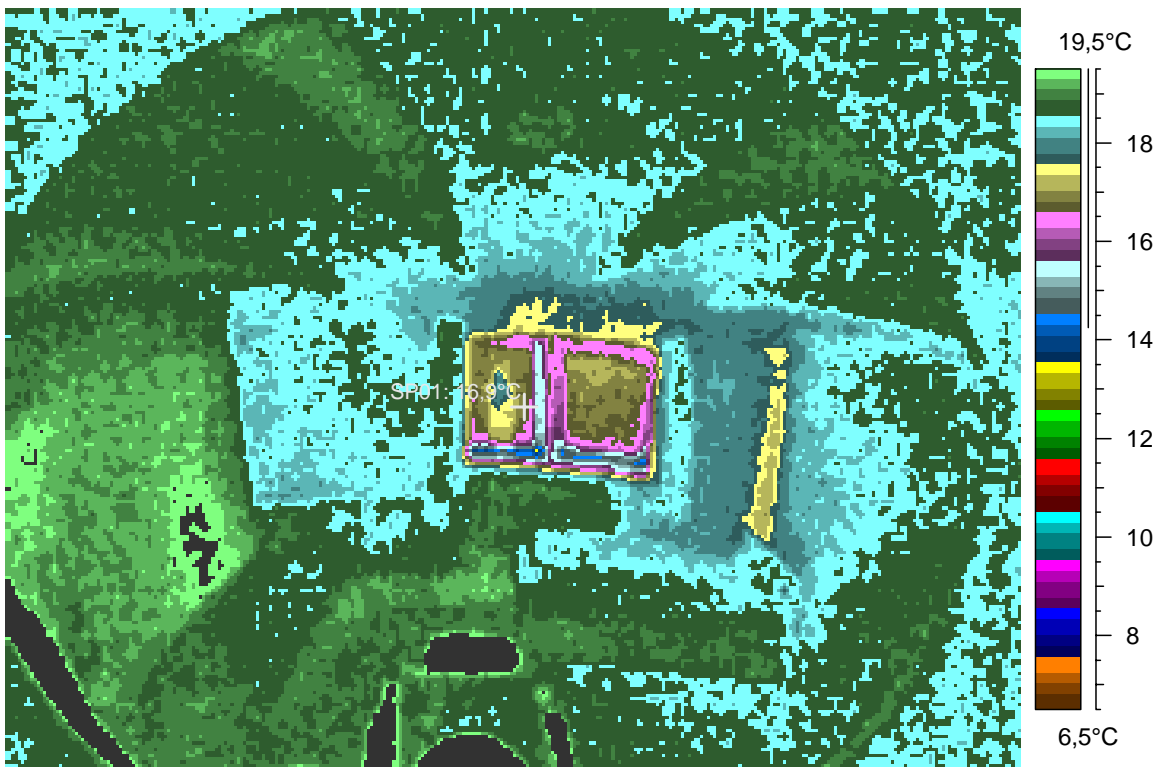
blabla

25 - Ir_1265.jpg

Label	Value
IR : max	25,6°C
IR : min	13,6°C
SP01	16,9°C

3.1.2008

21:42:53



comments:

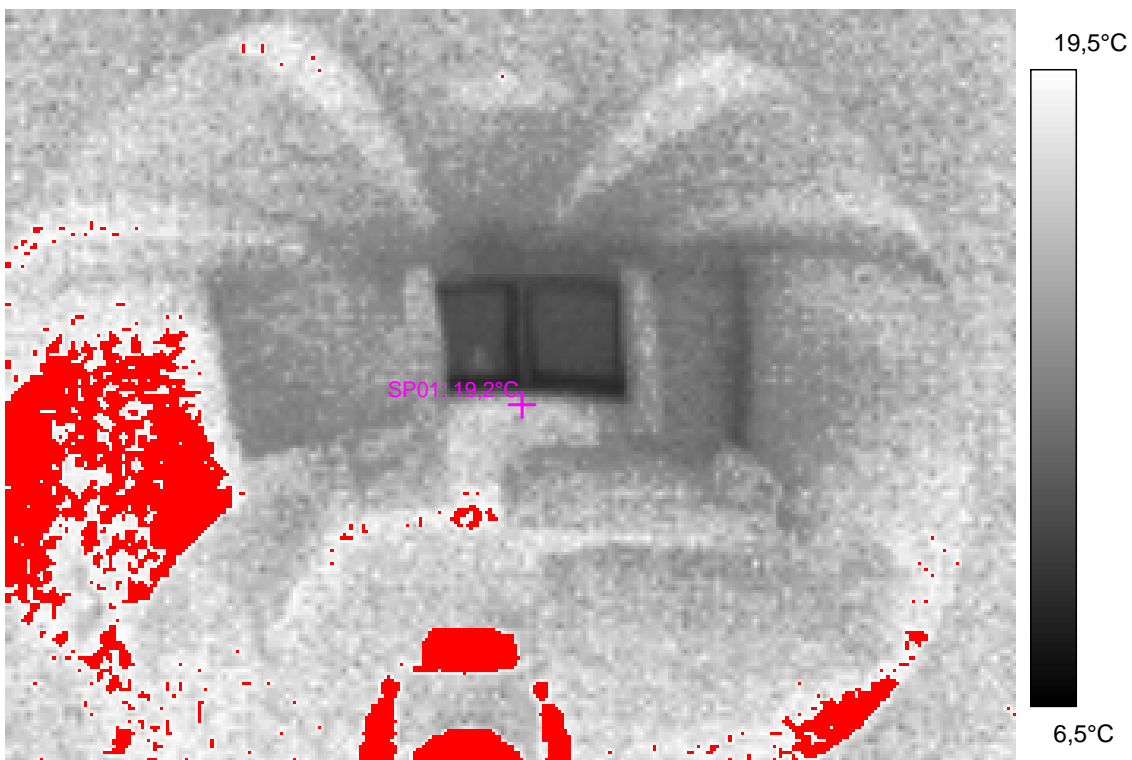
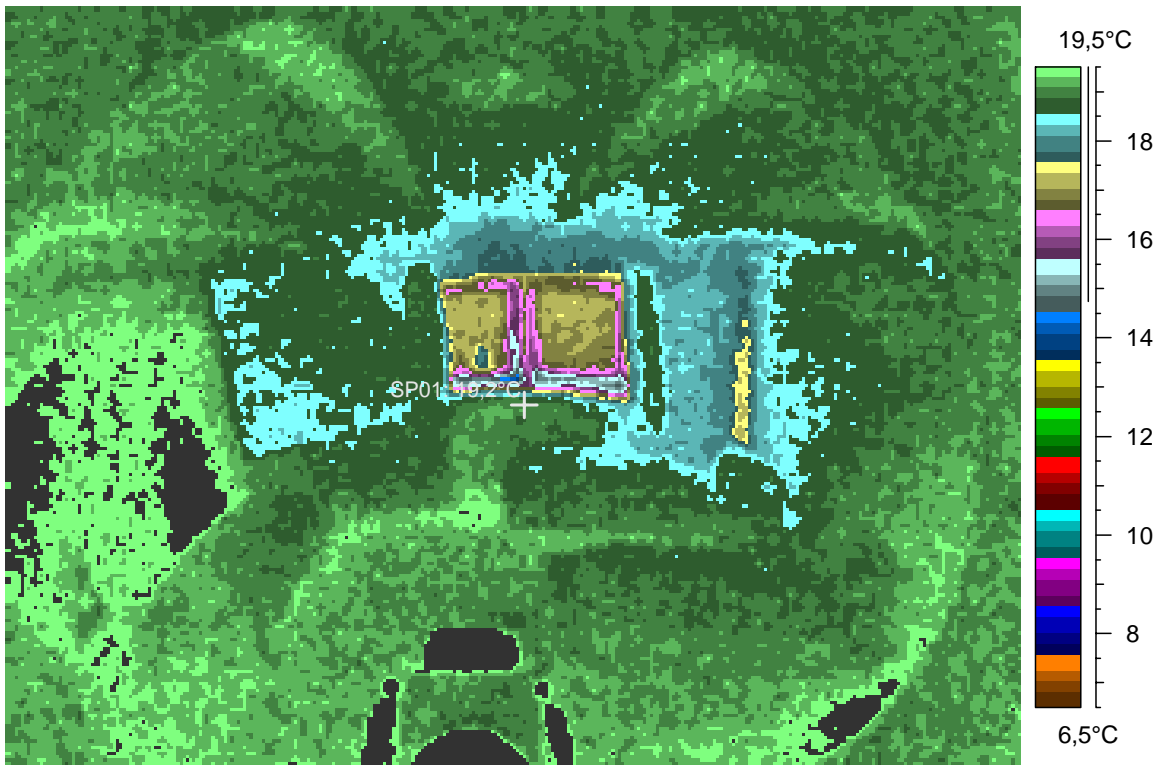
blabla

26 - Ir_1266.jpg

Label	Value
IR : max	25,0°C
IR : min	14,1°C
SP01	19,2°C

3.1.2008

21:43:13



comments:

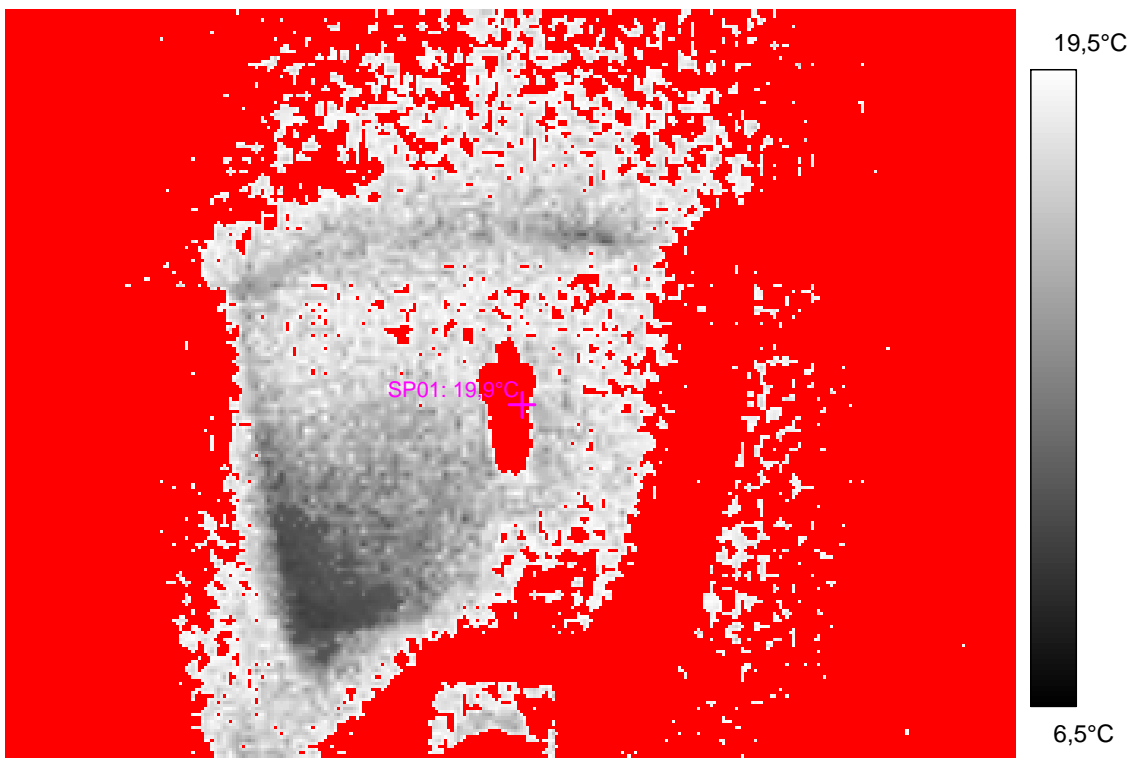
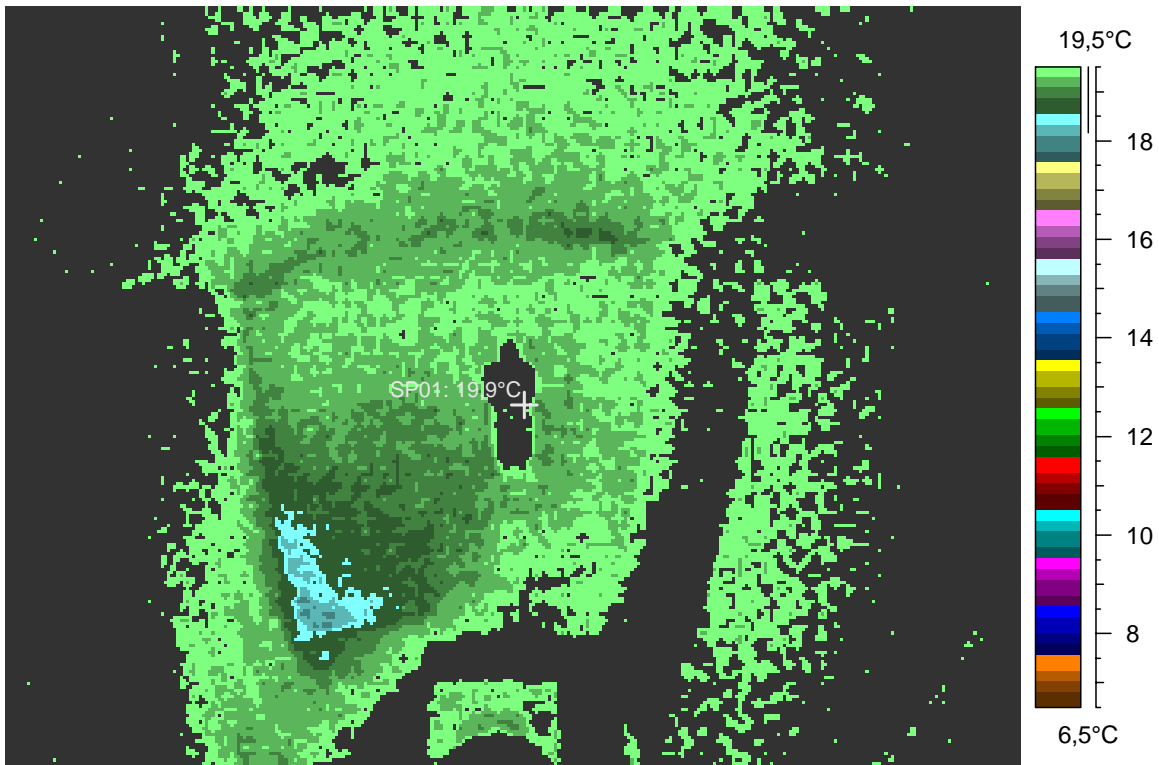
blabla

27 - Ir_1267.jpg

Label	Value
IR : max	30,9°C
IR : min	18,0°C
SP01	19,9°C

3.1.2008

21:43:45



comments:

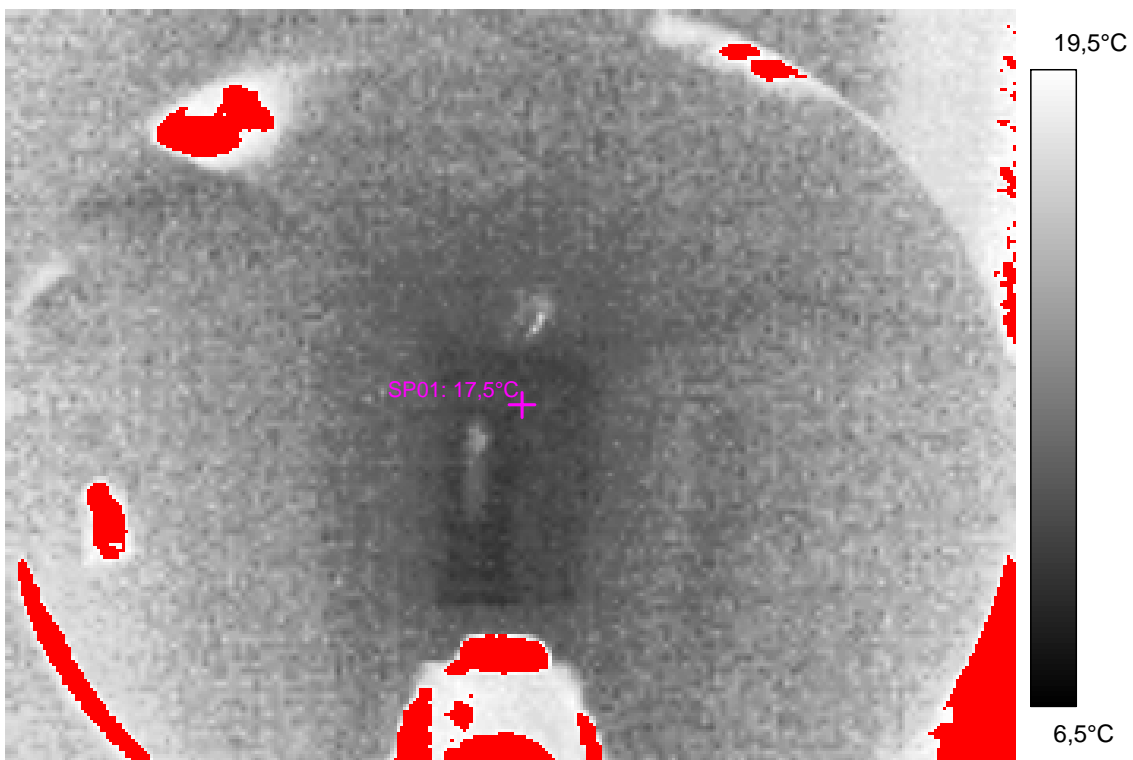
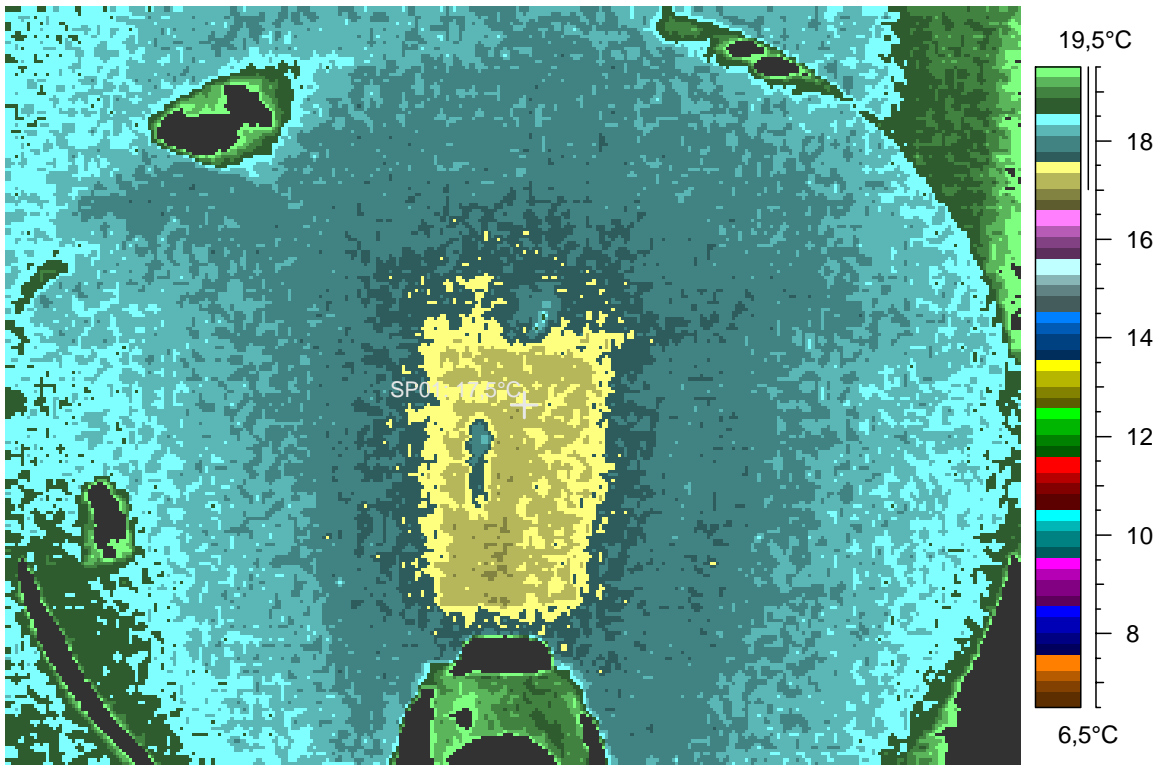
blabla

28 - Ir_1268.jpg

Label	Value
IR : max	28,5°C
IR : min	16,9°C
SP01	17,5°C

3.1.2008

21:45:21



comments:

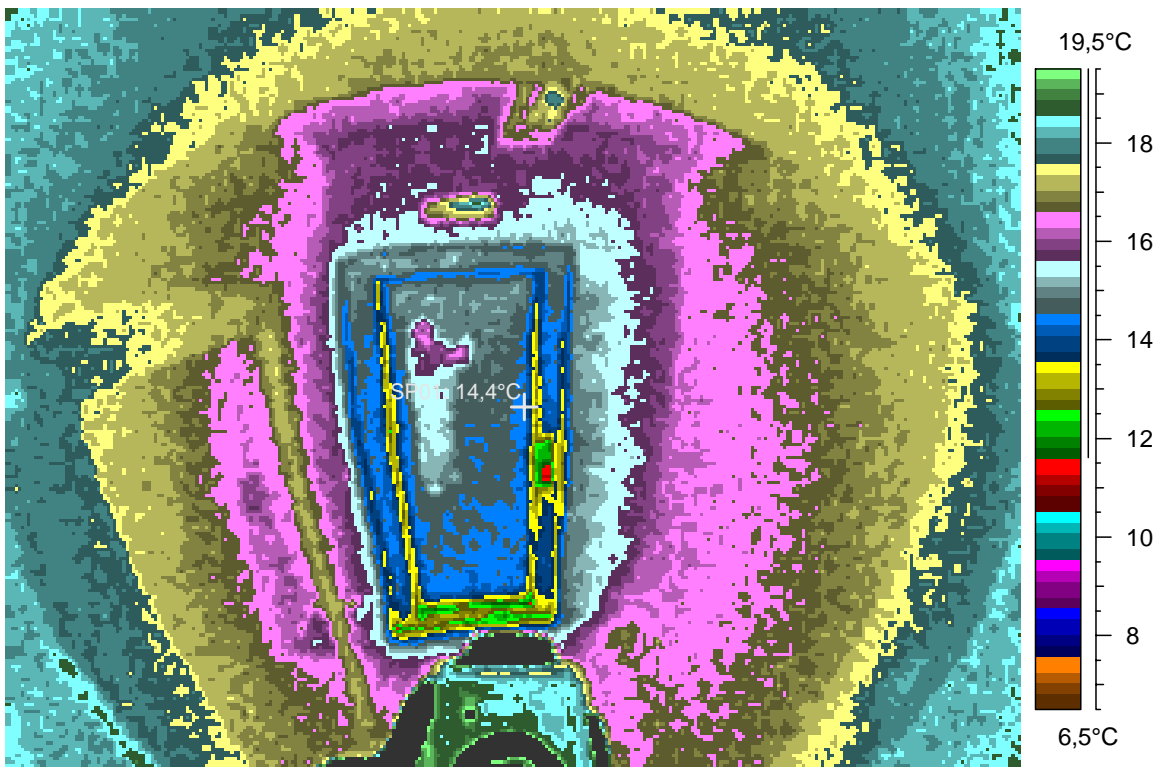
blabla

29 - Ir_1269.jpg

Label	Value
IR : max	31,4°C
IR : min	11,2°C
SP01	14,4°C

3.1.2008

21:46:03



comments:

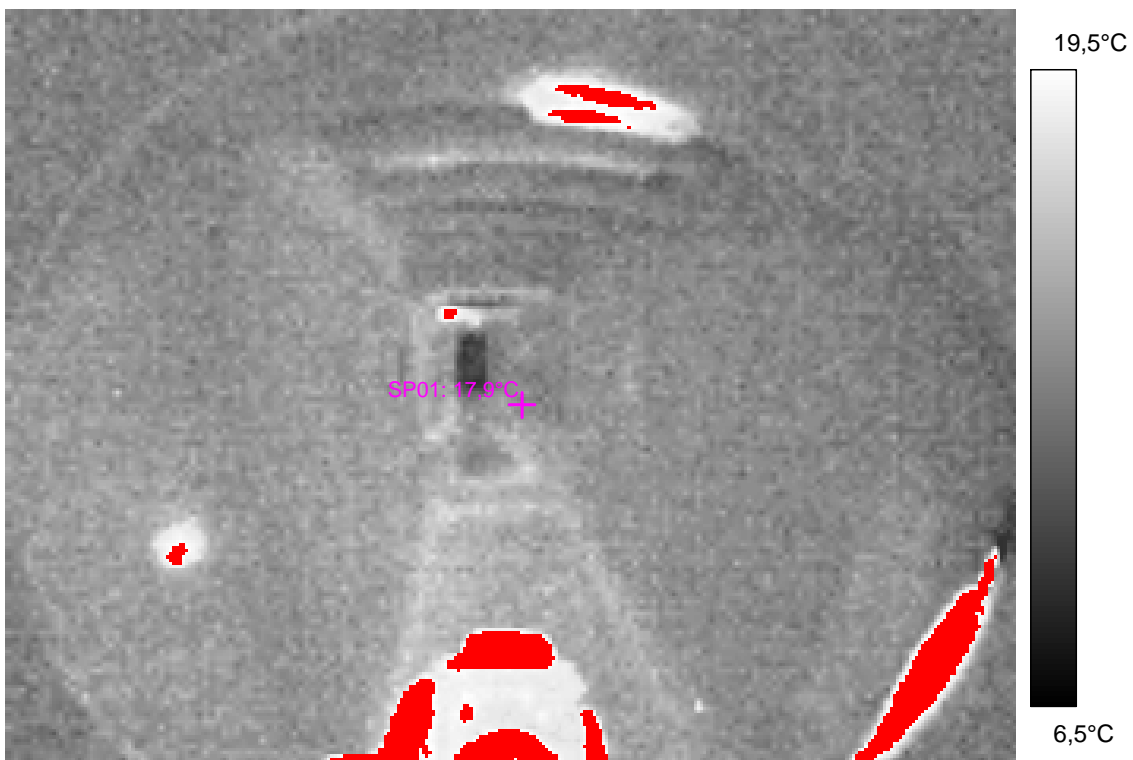
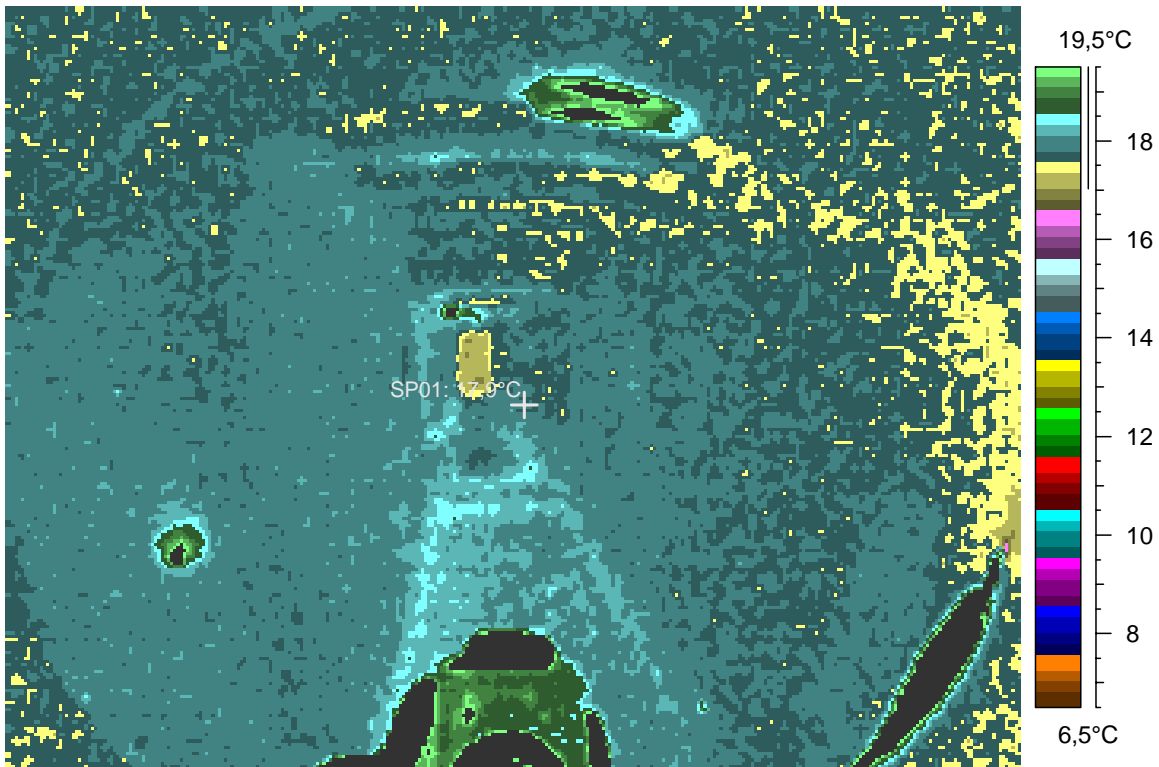
blabla

30 - Ir_1270.jpg

Label	Value
IR : max	31,5°C
IR : min	16,6°C
SP01	17,9°C

3.1.2008

21:46:28



comments:

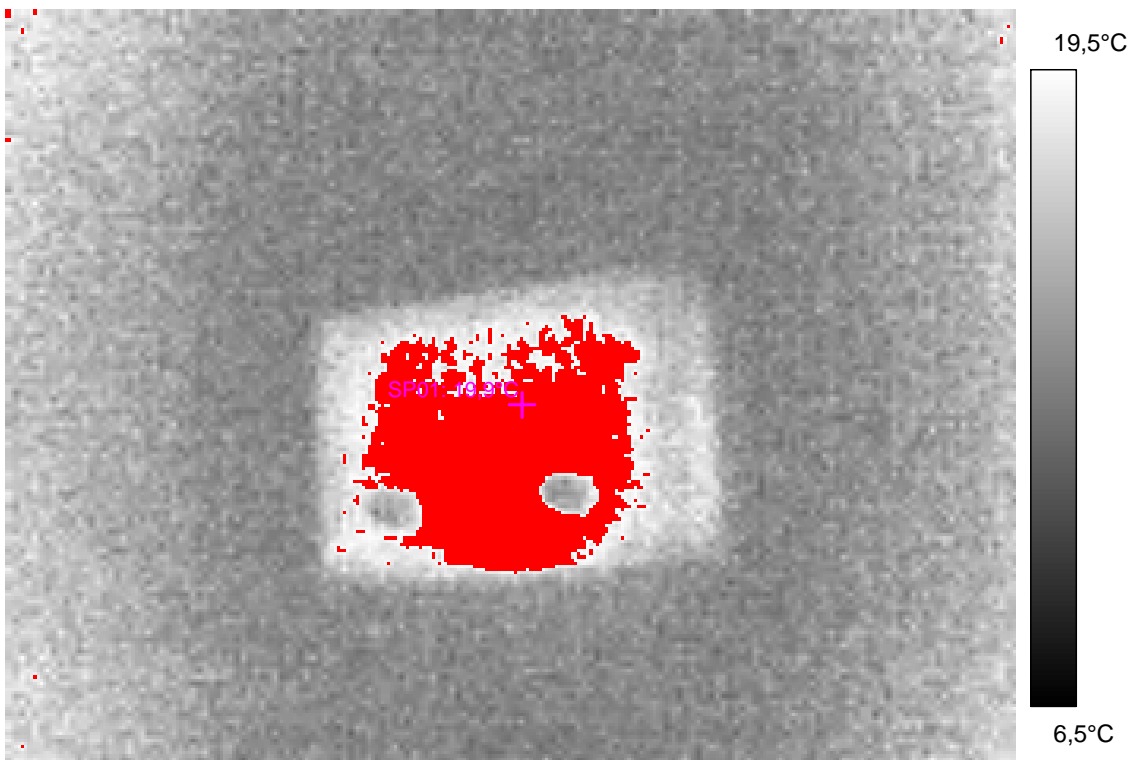
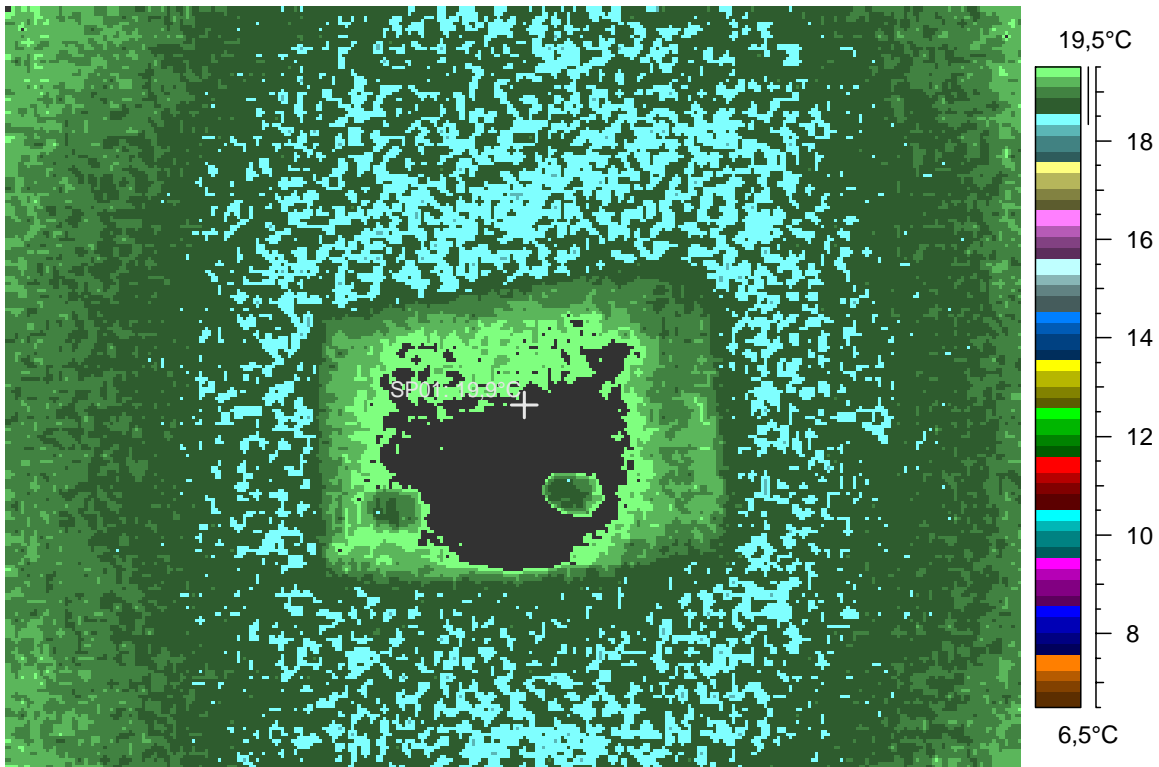
blabla

31 - Ir_1271.jpg

Label	Value
IR : max	21,0°C
IR : min	18,3°C
SP01	19,9°C

3.1.2008

21:48:39



comments:

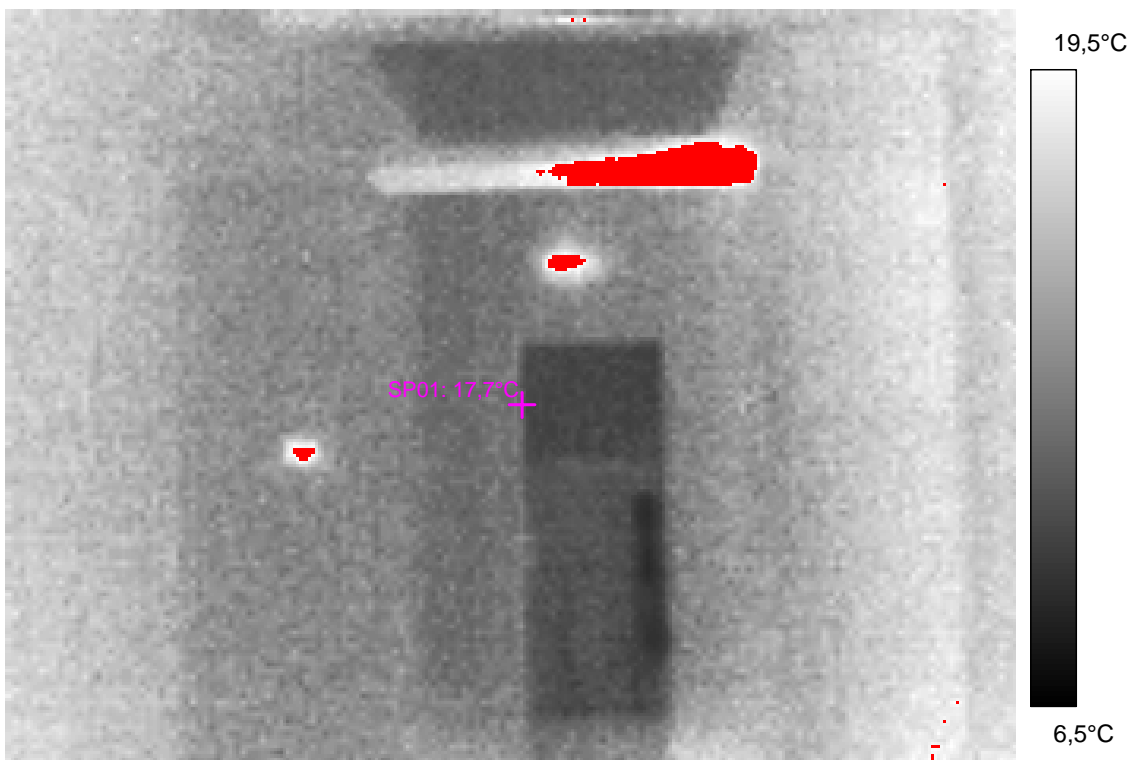
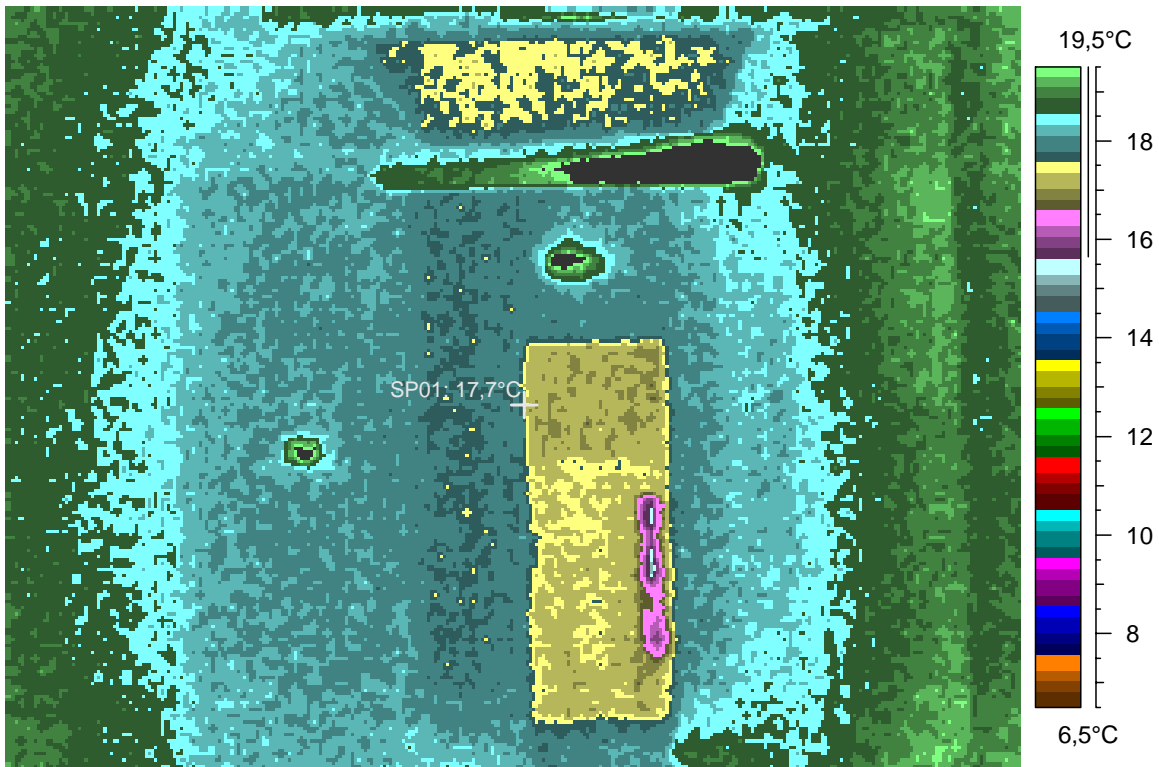
blabla

32 - Ir_1272.jpg

Label	Value
IR : max	25,5°C
IR : min	15,2°C
SP01	17,7°C

3.1.2008

21:49:05



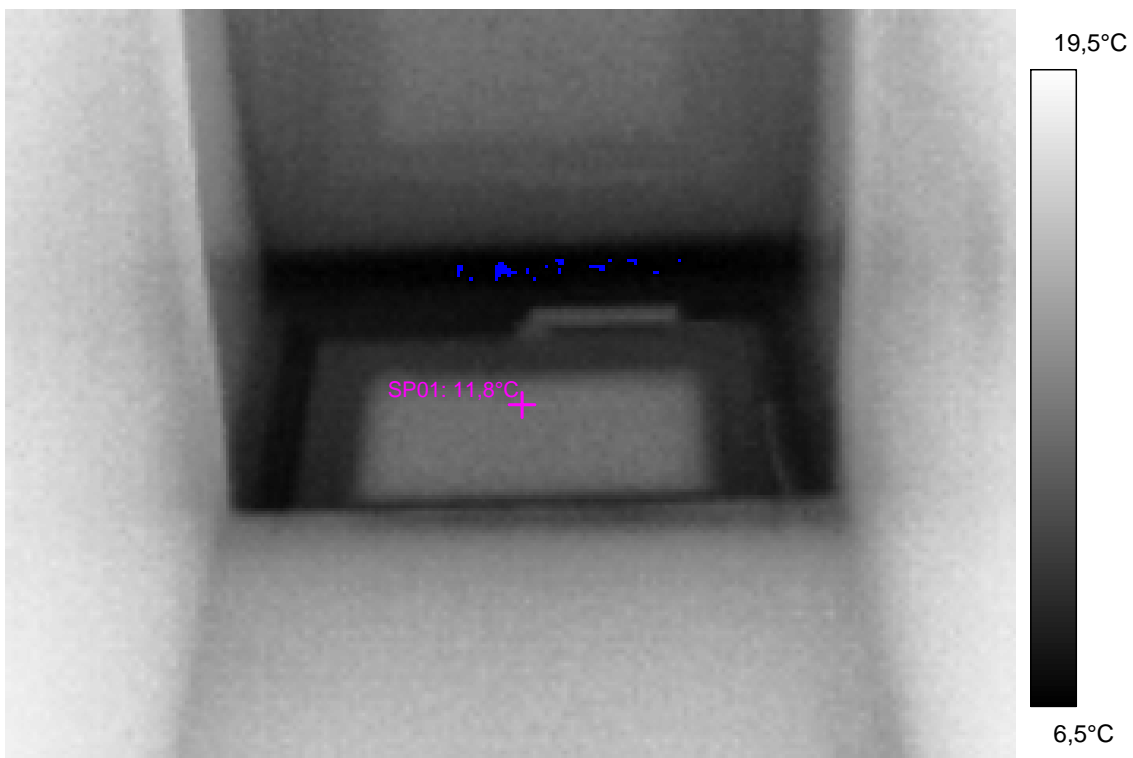
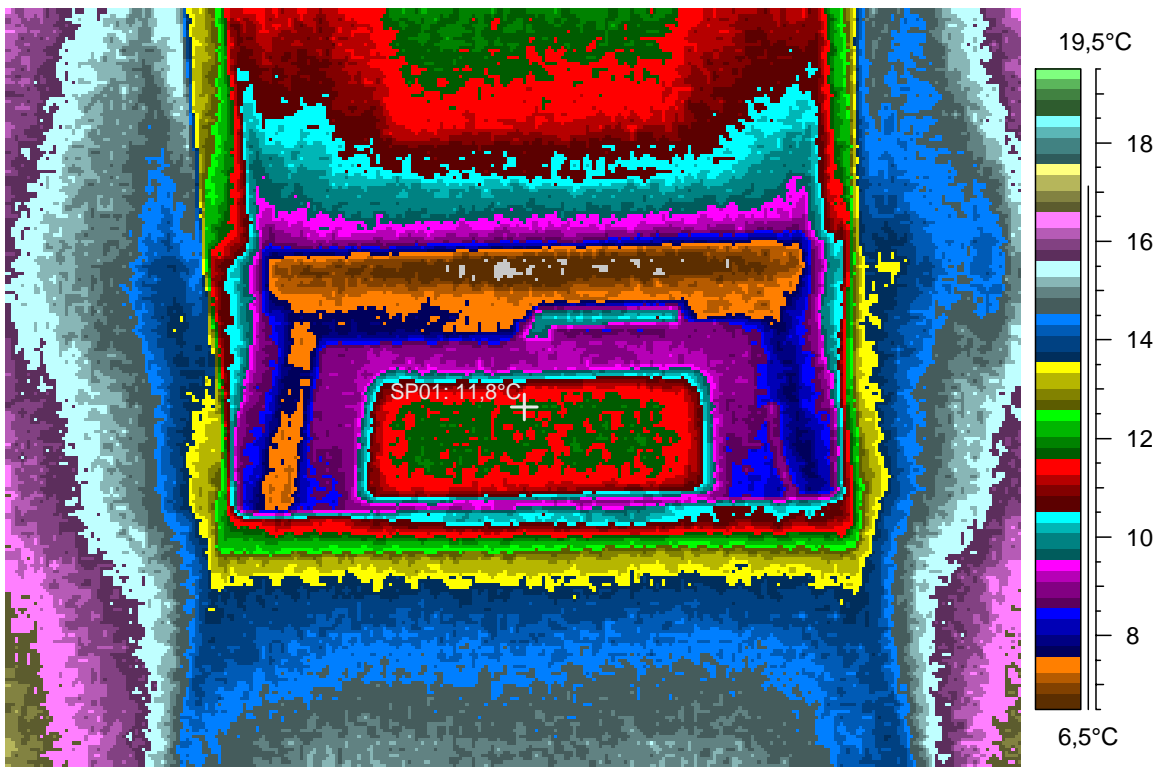
Skylight above the dormitory corridor.

33 - Ir_1273.jpg

Label	Value
IR : max	17,2°C
IR : min	6,3°C
SP01	11,8°C

3.1.2008

21:49:36



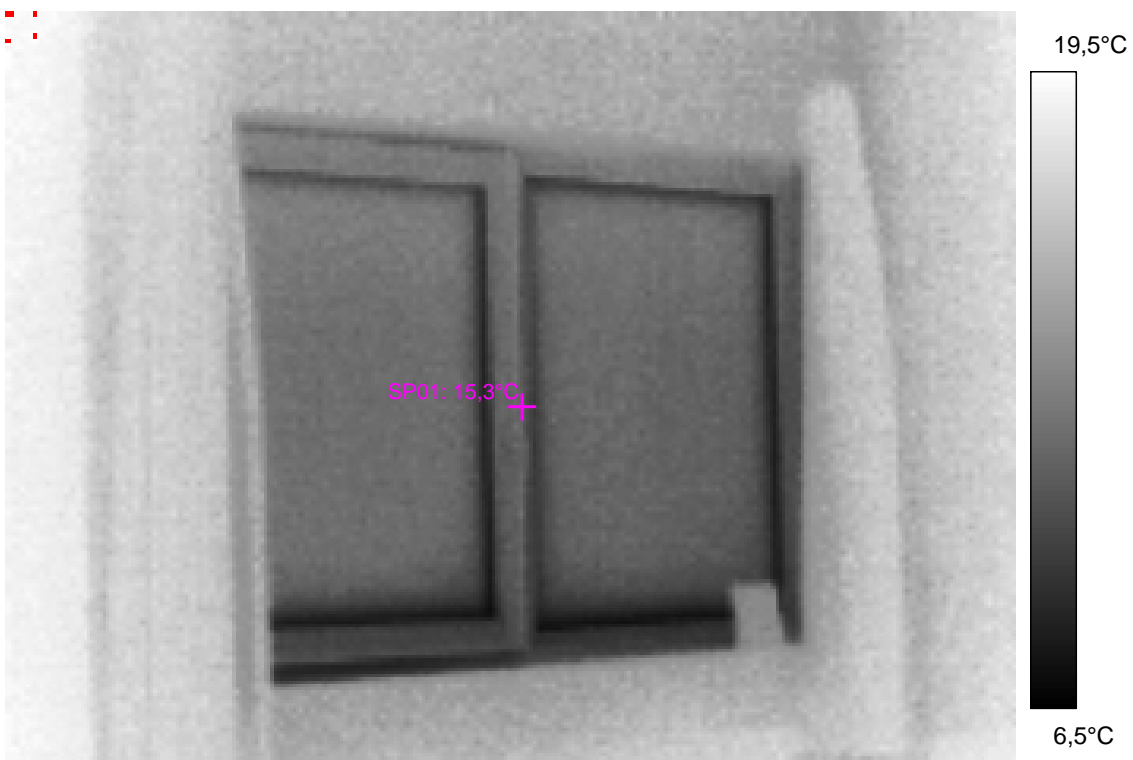
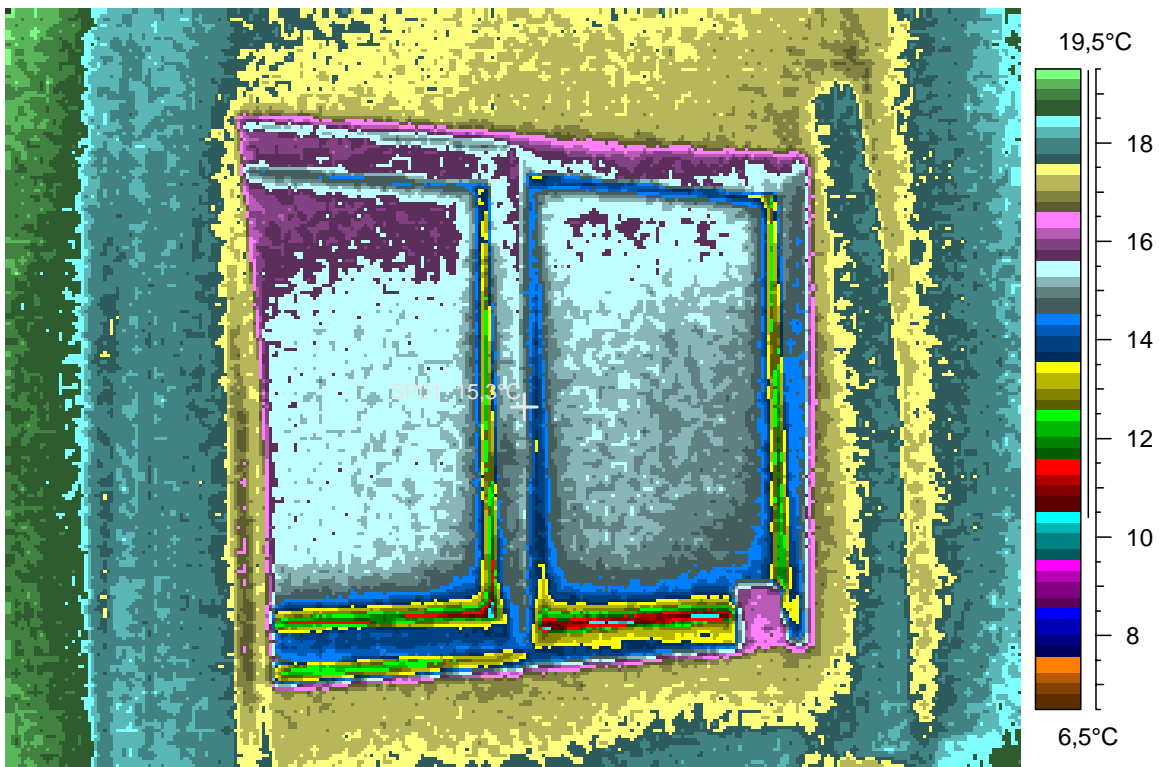
Internorm window in an apartment, a reference uncooled surface at lower right corner.

34 - Ir_1274.jpg

Label	Value
IR : max	19,7°C
IR : min	9,6°C
SP01	15,3°C

3.1.2008

21:51:08



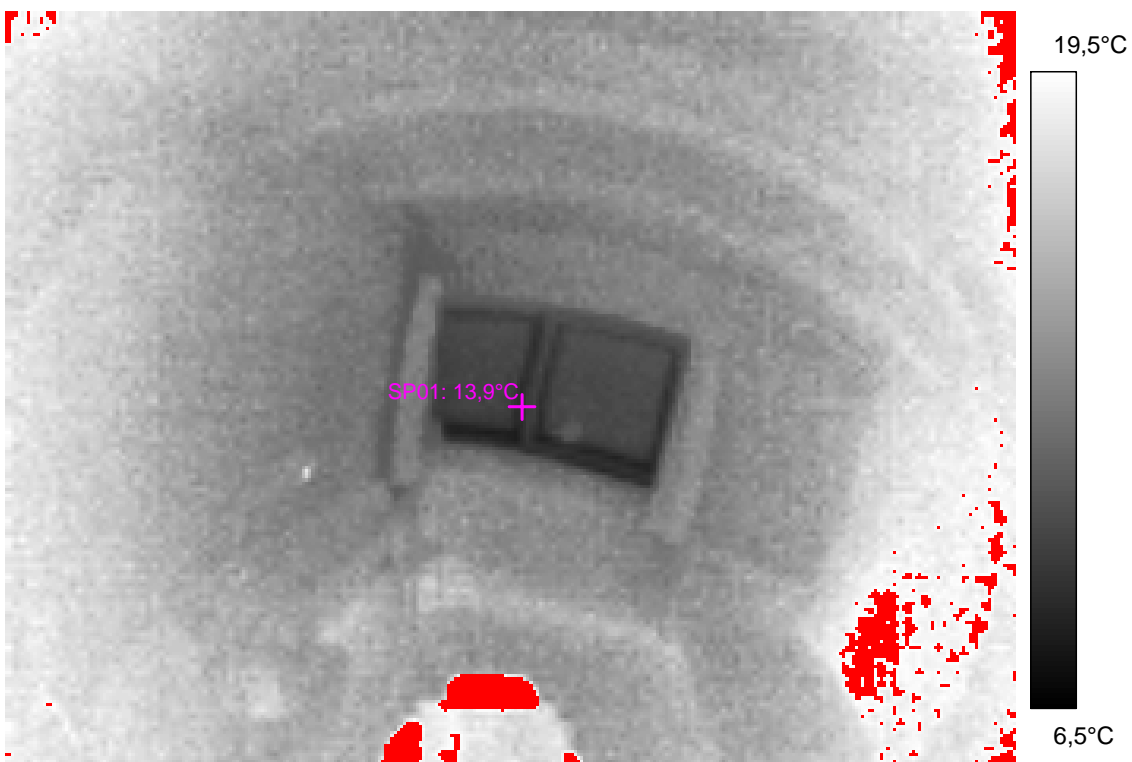
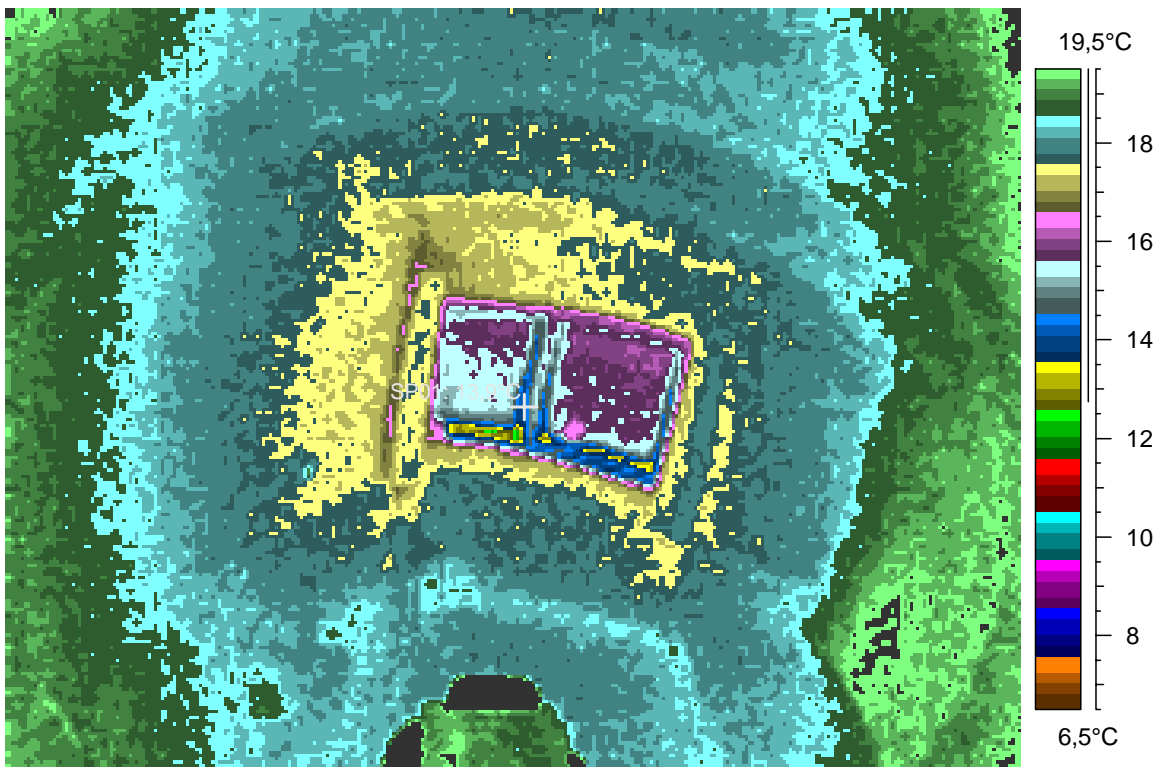
Room with that window, using a concave mirror. Reflection of the thermographer at the right (left, in fact) pane.

35 - Ir_1275.jpg

Label	Value
IR : max	31,2°C
IR : min	12,2°C
SP01	13,9°C

3.1.2008

21:52:33



The same room, from its very corner.

36 - Ir_1276.jpg

Label	Value
IR : max	31,5°C
IR : min	12,5°C
SP01	15,6°C

3.1.2008

21:52:59

