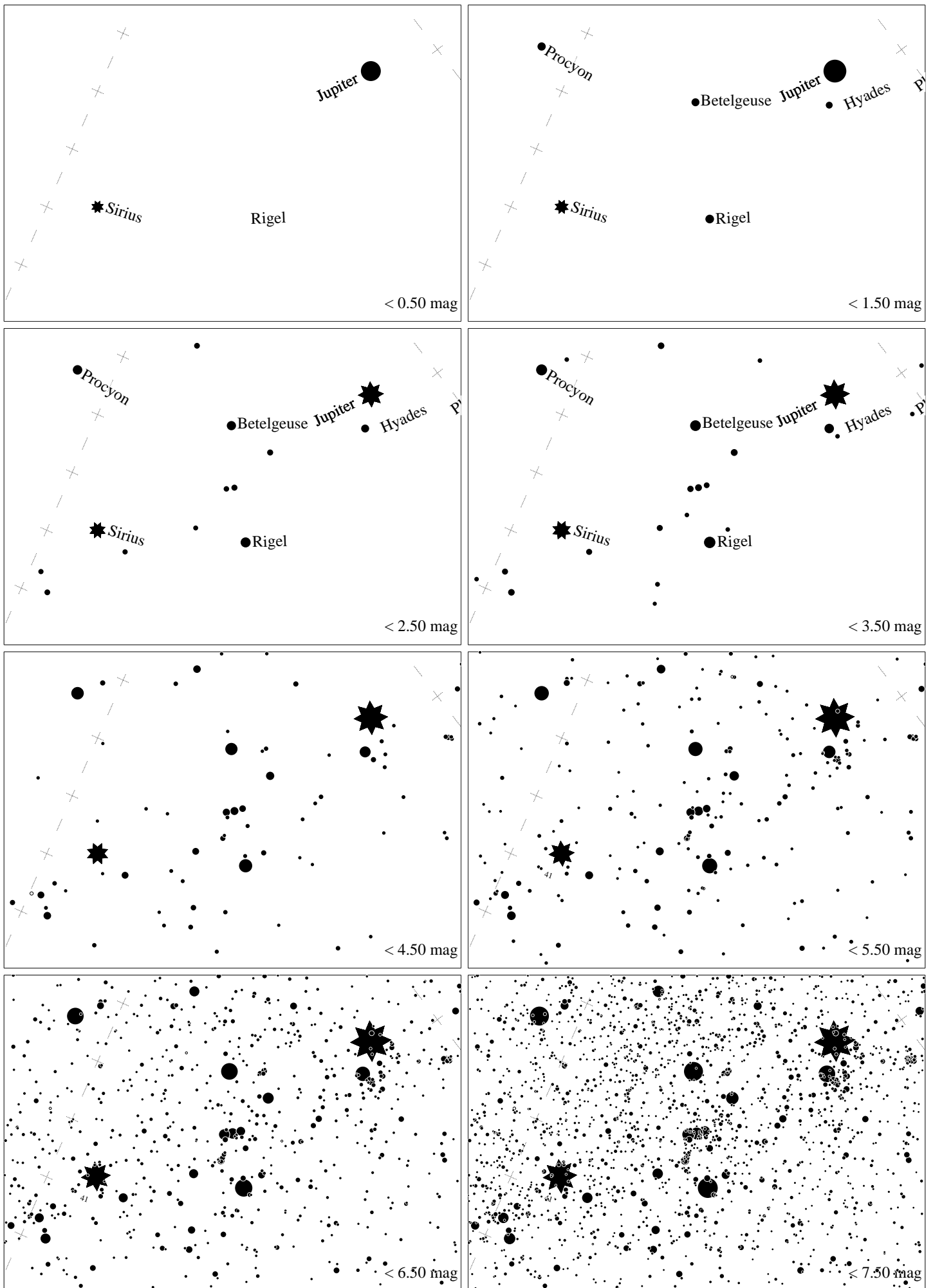
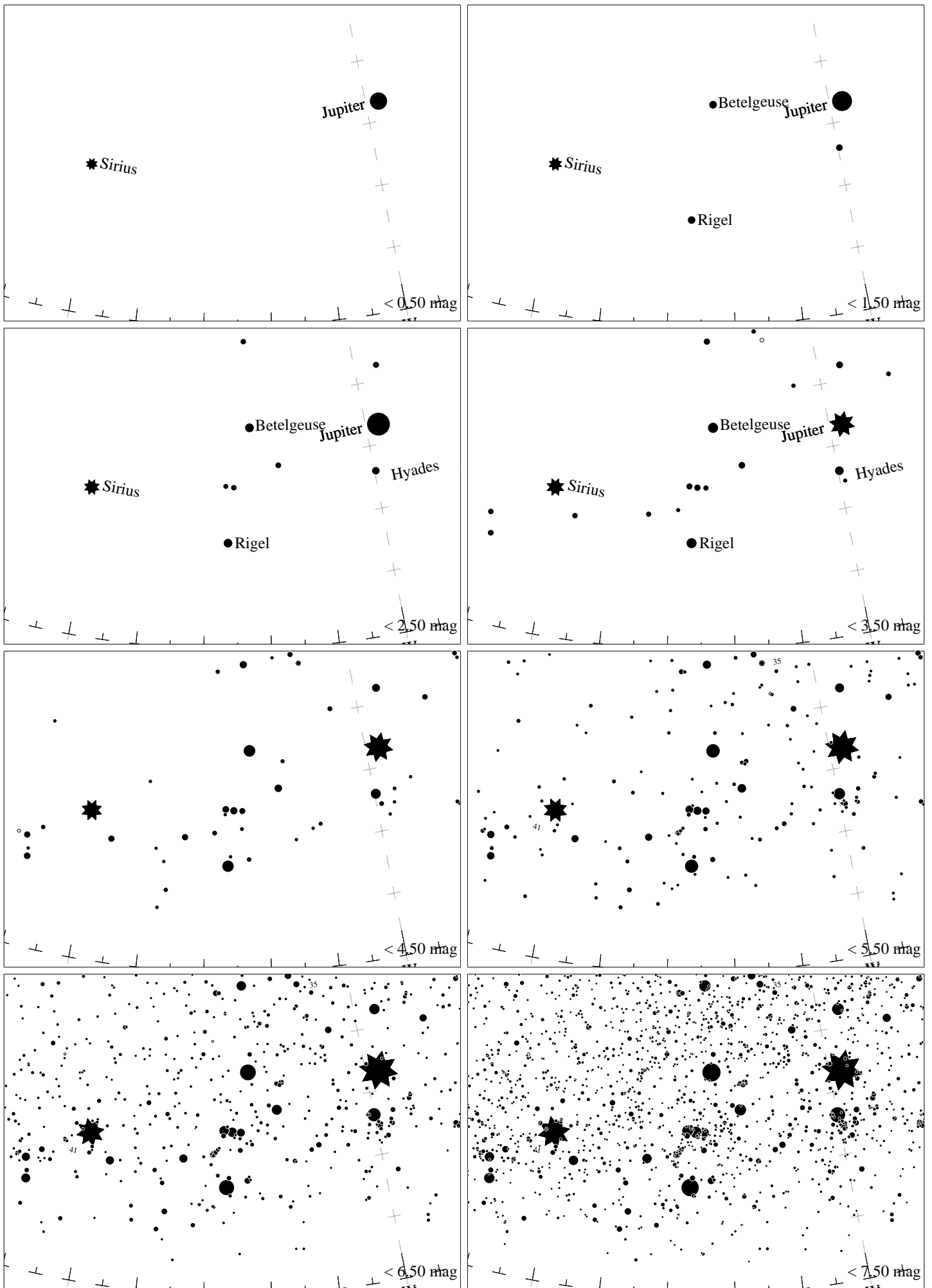


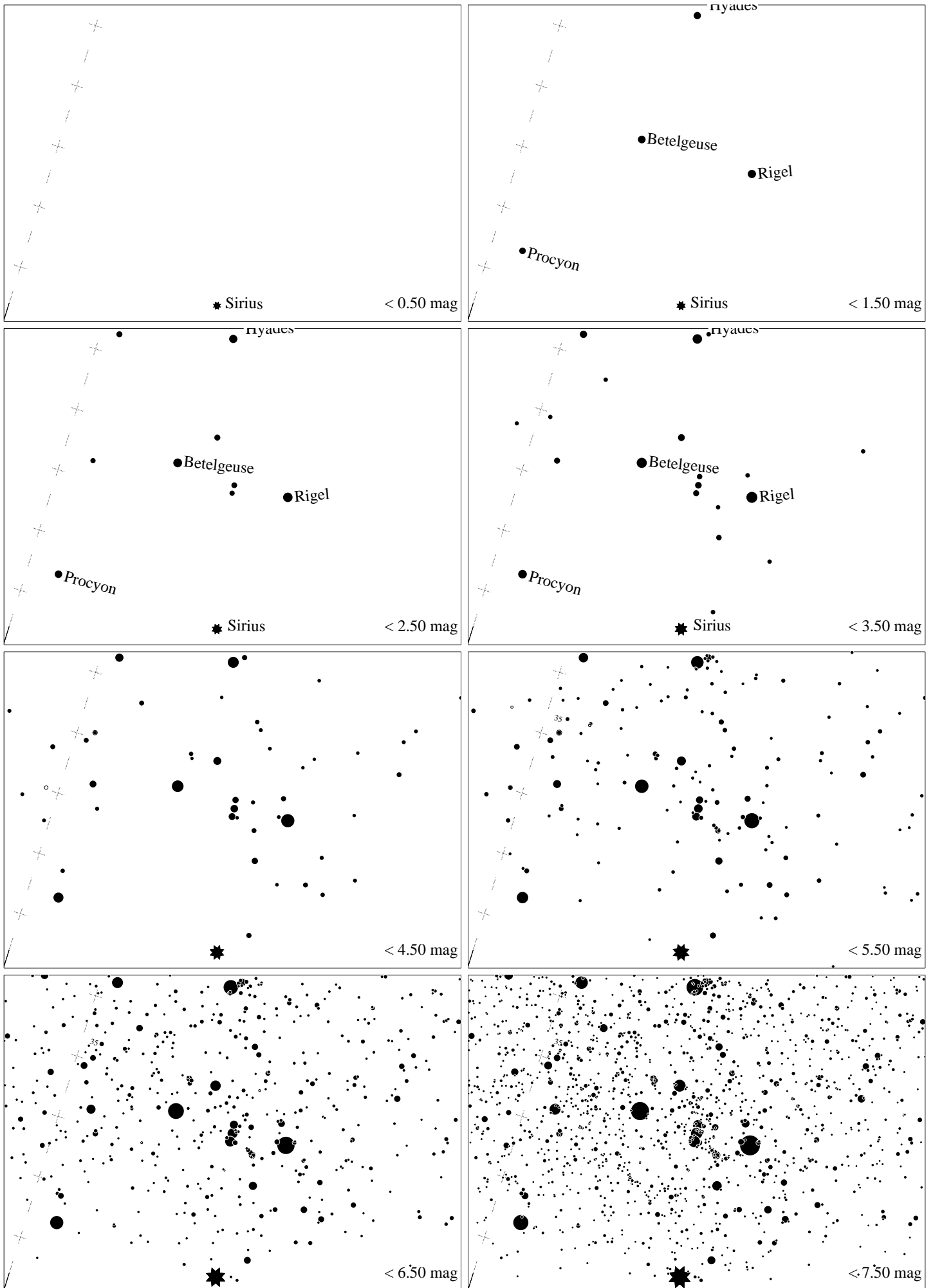
Maps for Globe at Night at latitude 40° , 2025-01-25, 21 h local time (Sun at -44°), transparent air. Lines from N(E,S,W) to zenith shown (crosses each 10°). Orion's belt is 6° to the left from S, at 49° height. Star clusters M 41 and M 35 marked when appropriate. Map vertical size is 50° . *Jan Hollan maps, CzechGlobe*



Maps for Globe at Night at latitude 40° , 2025-02-23, 21:00 local time (Sun at -38°), transparent air. Lines from N(E,S,W) to zenith shown (crosses each 10°). Orion's belt is 35° to the right from S, at 43° height. Star clusters M 41 and M35 marked when appropriate. Map vertical size is 50° . *Jan Hollan maps, CzechGlobe*



Maps for Globe at Night at latitude 40° , 2025-03-25, 21:00 local time (Sun at -30°), transparent air. Lines from N(E,S,W) to zenith shown (crosses each 10°). Orion's belt is 64° to the right from S, at 26° height. Star clusters M 41 and M35 marked when appropriate. Map vertical size is 50° . *Jan Hollan maps, CzechGlobe*



Maps for Globe at Night at latitude 40° , 2025-12-14, 21 h local time (Sun at -50°), transparent air. Lines from N(E,S,W) to zenith shown (crosses each 10°). Orion's belt is 57° to the left from S, at 32° height. Star clusters M 41 and M35 marked when appropriate. Map vertical size is 50° . *Jan Hollan maps, CzechGlobe*