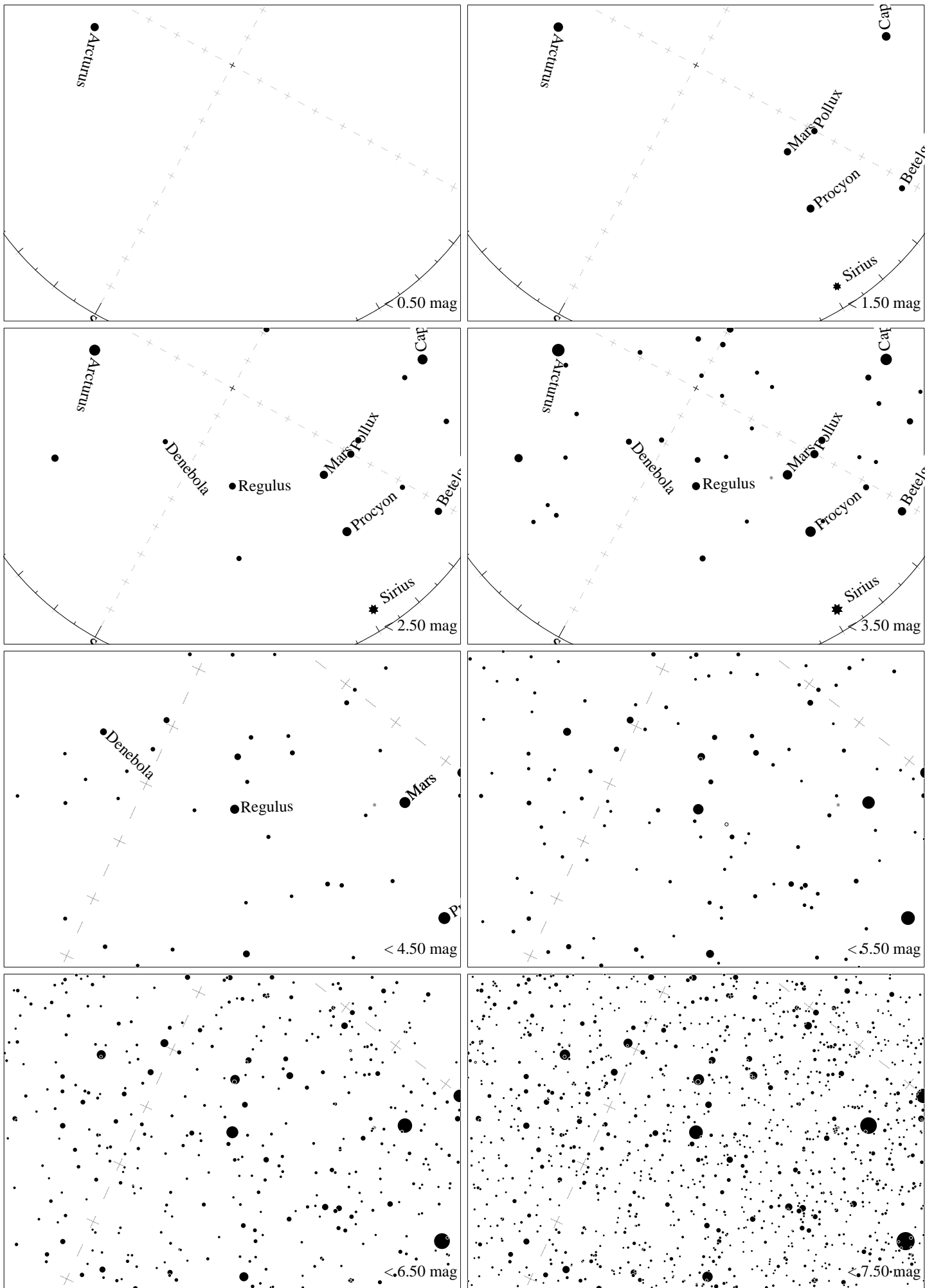
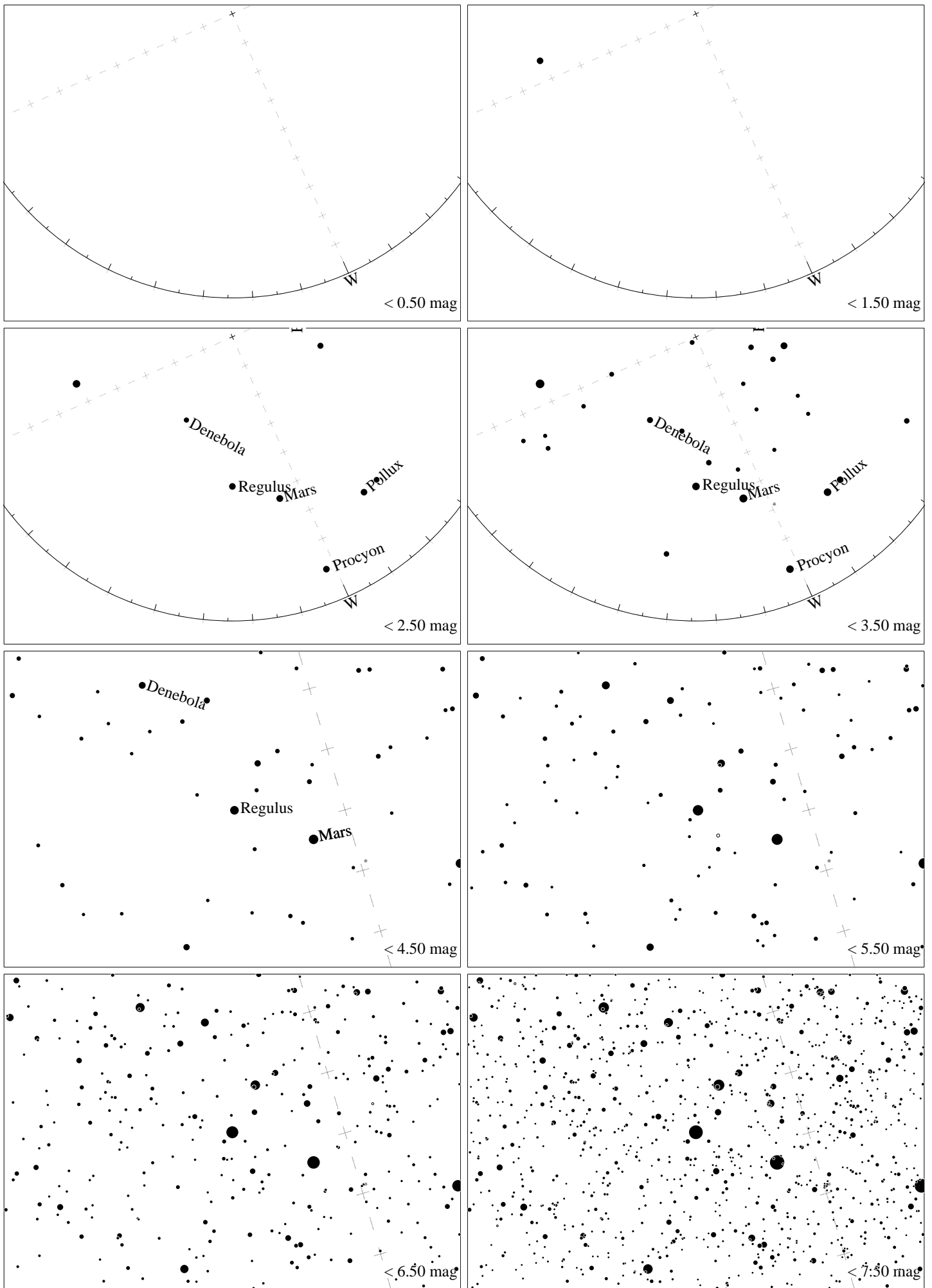


Maps for Globe at Night at latitude 40° , 2025-03-25, 21 h local time (Sun at -30°), transparent air. Lines from N(E,S,W) to zenith shown (crosses each 10°). Regulus (α Leonis) is 27° to the left from S, at 59° height. Detailed maps 50° vertically, the first four maps 100° . *Jan Hollan maps, CzechGlobe*



Maps for Globe at Night at latitude 40° , 2025-04-23, 21 h local time (Sun at -23°), transparent air. Lines from N(E,S,W) to zenith shown (crosses each 10°). Regulus (α Leonis) is 29° to the right from S, at 59° height. Detailed maps 50° vertically, the first four maps 100° . *Jan Hollan maps, CzechGlobe*



Maps for Globe at Night at latitude 40° , 2025-05-22, 21 h local time (Sun at -17°), transparent air. Lines from N(E,S,W) to zenith shown (crosses each 10°). Regulus (α Leonis) is 66° to the right from S, at 43° height. Detailed maps 50° vertically, the first four maps 100° . *Jan Hollan maps, CzechGlobe*