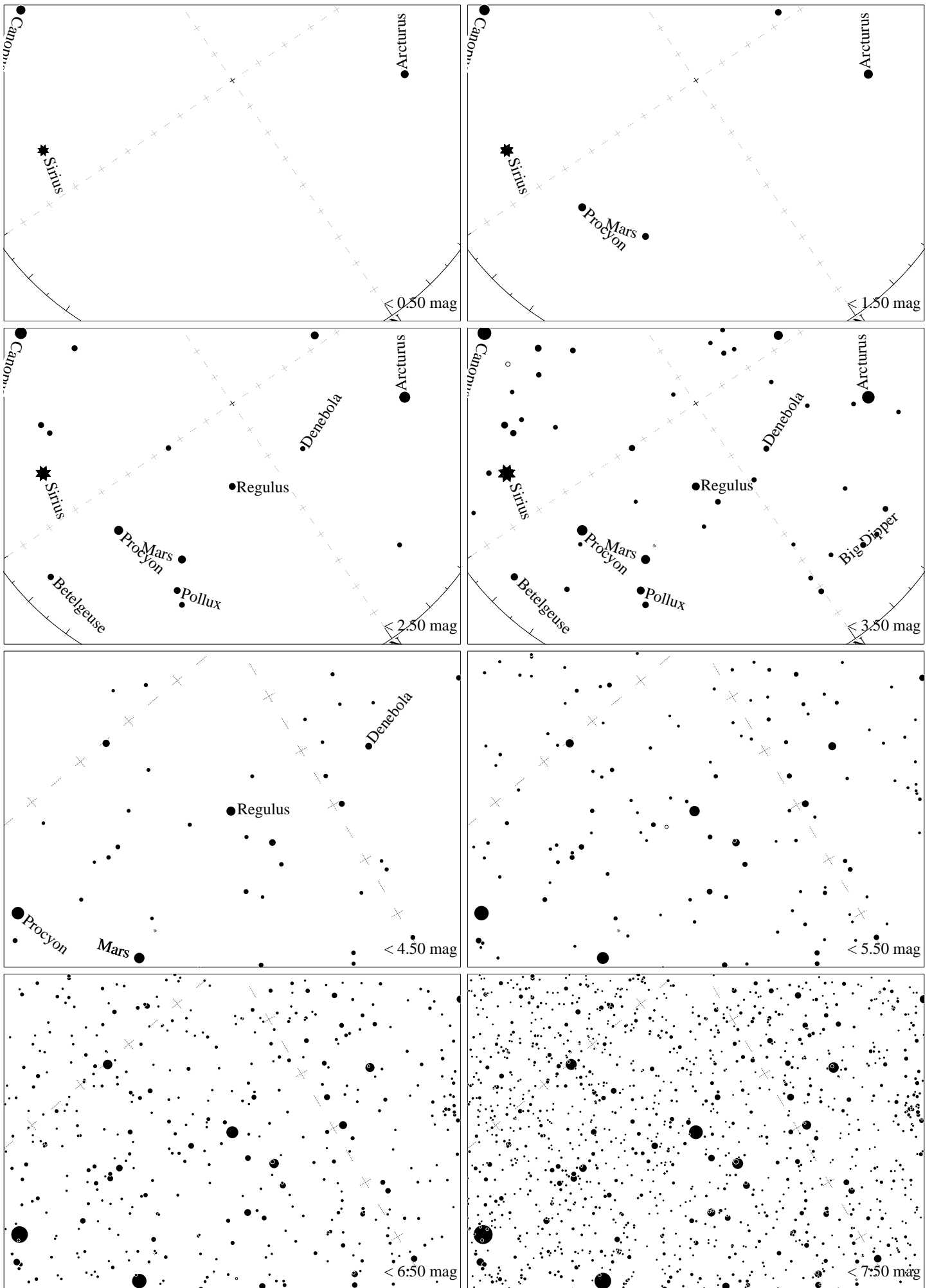
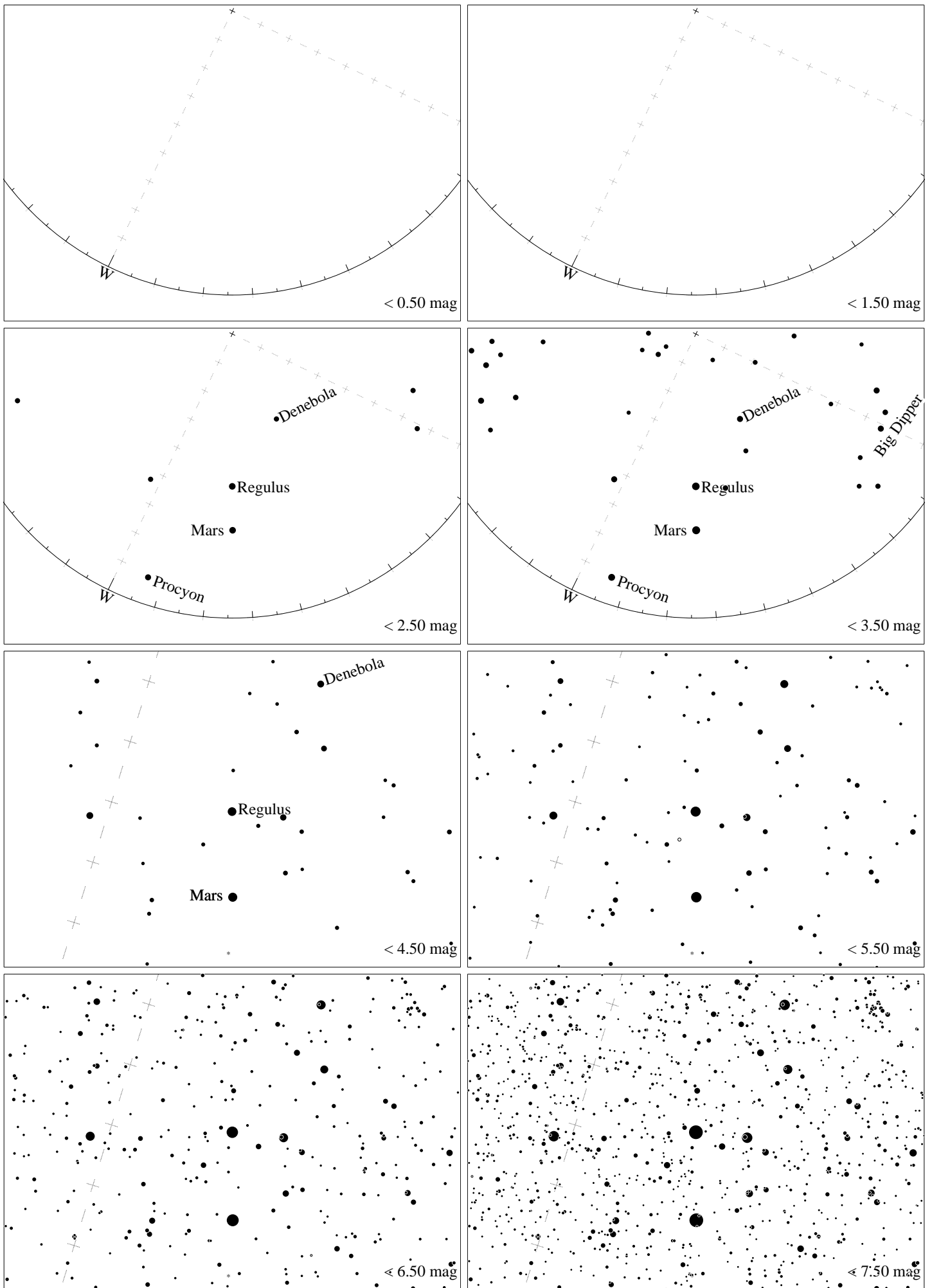


Maps for Globe at Night at latitude -10° , 2025-03-25, 21 h local time (Sun at -43°), transparent air. Lines from N(E,S,W) to zenith shown (crosses each 10°). Regulus (α Leonis) is 33° to the right from N, at 64° height. Detailed maps 50° vertically, the first four maps 100° . *Jan Hollan maps, CzechGlobe*



Maps for Globe at Night at latitude -10° , 2025-04-23, 21 h local time (Sun at -46°), transparent air. Lines from N(E,S,W) to zenith shown (crosses each 10°). Regulus (α Leonis) is 34° to the left from N, at 64° height. Detailed maps 50° vertically, the first four maps 100° . *Jan Hollan maps, CzechGlobe*



Maps for Globe at Night at latitude -10° , 2025-05-22, 21 h local time (Sun at -46°), transparent air. Lines from N(E,S,W) to zenith shown (crosses each 10°). Regulus (α Leonis) is 64° to the left from N, at 42° height. Detailed maps 50° vertically, the first four maps 100° . *Jan Hollan maps, CzechGlobe*