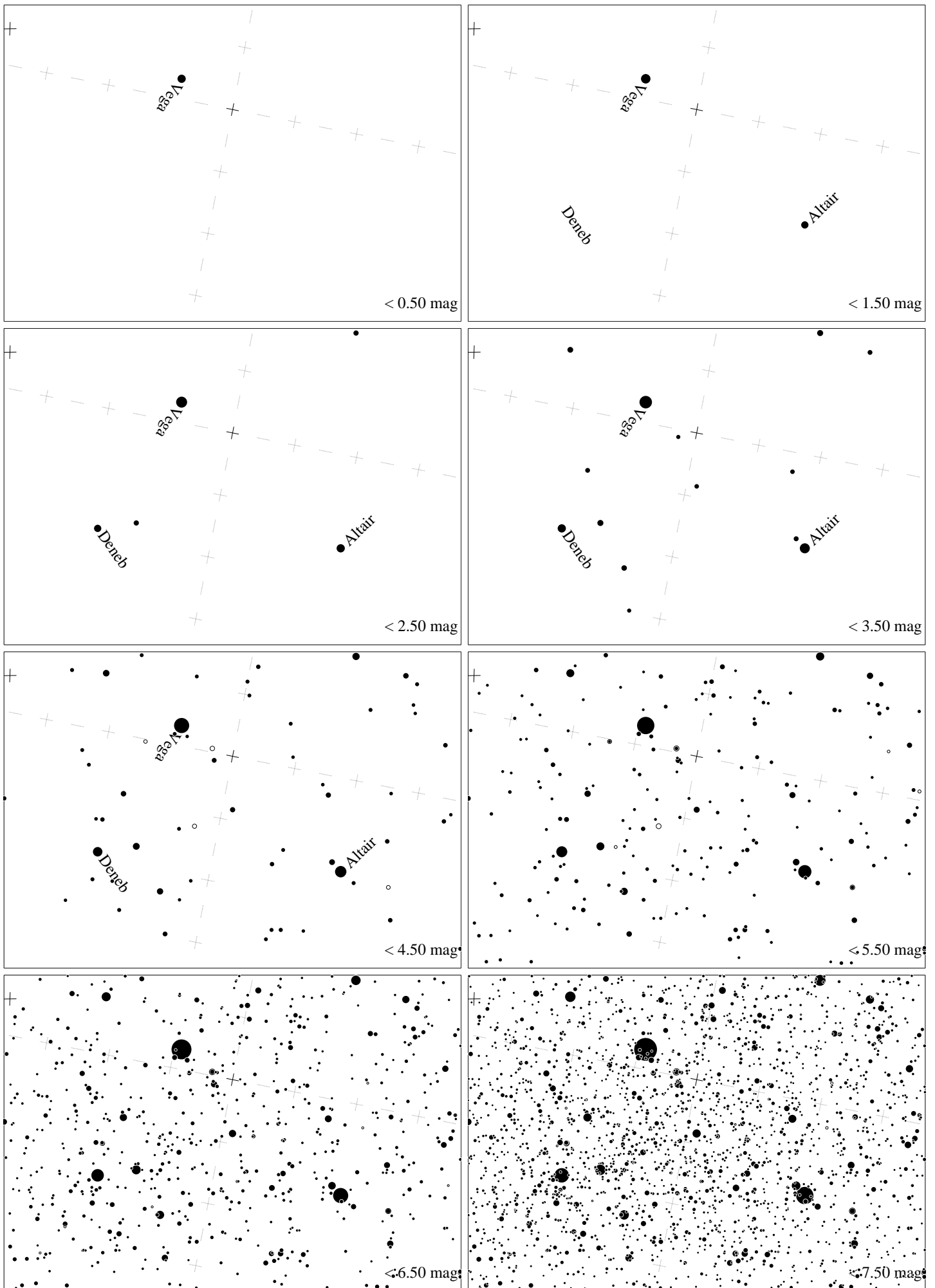
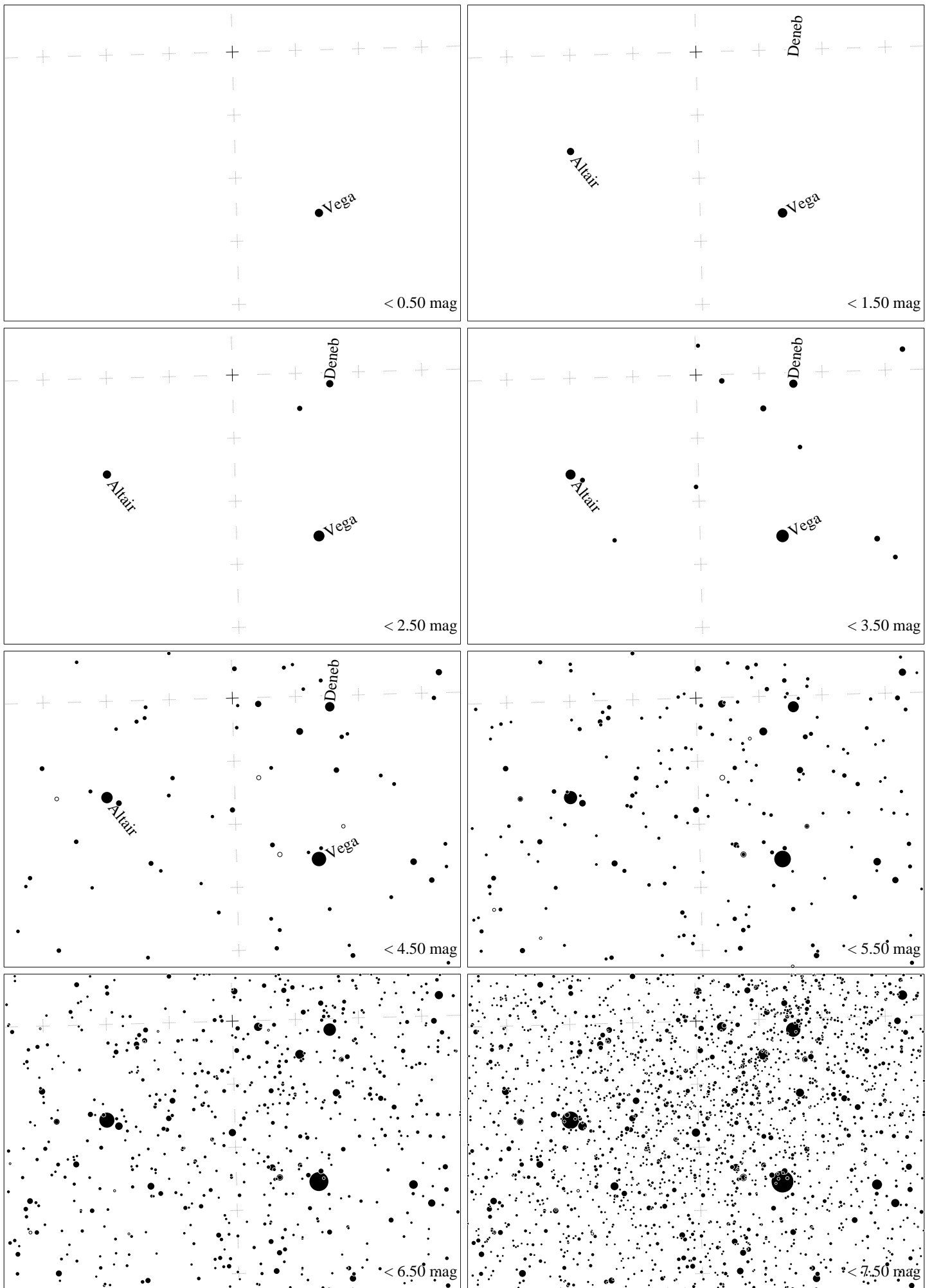


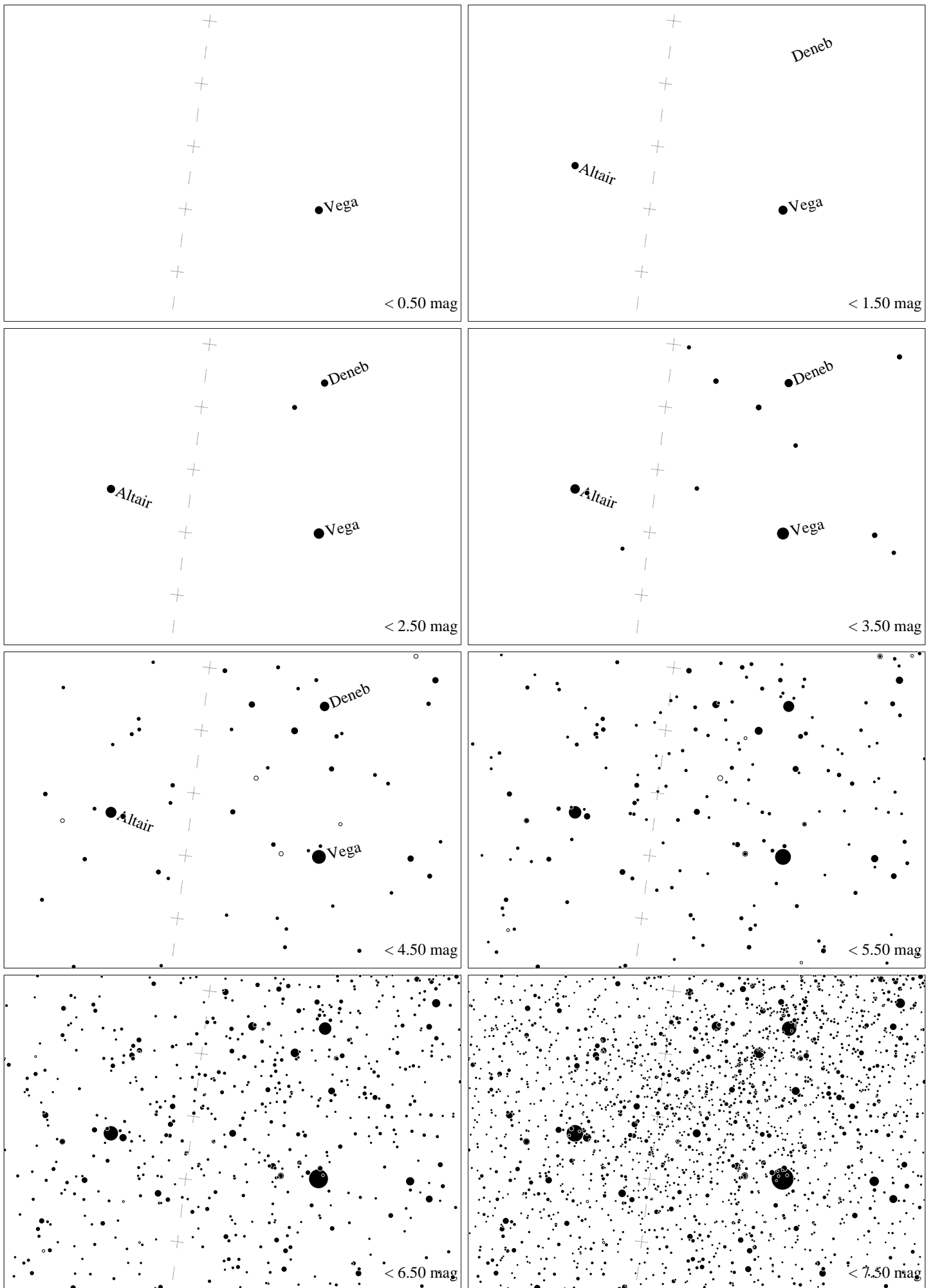
Maps for Globe at Night latitude 30° , 2025-07-20, 21 h local time (Sun at -22°), transparent air. Lines from N(E,S,W) to zenith shown (crosses each 10°). Centered on Albireo (β Cygni), 83° to the right from N, at 56° height, near the centre of Summer Triangle. Map vertical size is 50° . *Jan Hollan, CzechGlobe*



Maps for Globe at Night latitude 30° , 2025-08-19, 21 h local time (Sun at -29°), transparent air. Lines from N(E,S,W) to zenith shown (crosses each 10°). Centered on Albireo (β Cygni), 79° to the left from S, at 81° height, near the centre of Summer Triangle. Map vertical size is 50° . *Jan Hollan, CzechGlobe*



Maps for Globe at Night latitude 30° , 2025-09-18, 21 h local time (Sun at -38°), transparent air. Lines from N(E,S,W) to zenith shown (crosses each 10°). Centered on Albireo (β Cygni), 88° to the right from S, at 72° height, near the centre of Summer Triangle. Map vertical size is 50° . *Jan Hollan, CzechGlobe*



Maps for Globe at Night latitude 30° , 2025-10-17, 21 h local time (Sun at -46°), transparent air. Lines from N(E,S,W) to zenith shown (crosses each 10°). Centered on Albireo (β Cygni), 80° to the left from N, at 48° height, near the centre of Summer Triangle. Map vertical size is 50° . *Jan Hollan, CzechGlobe*