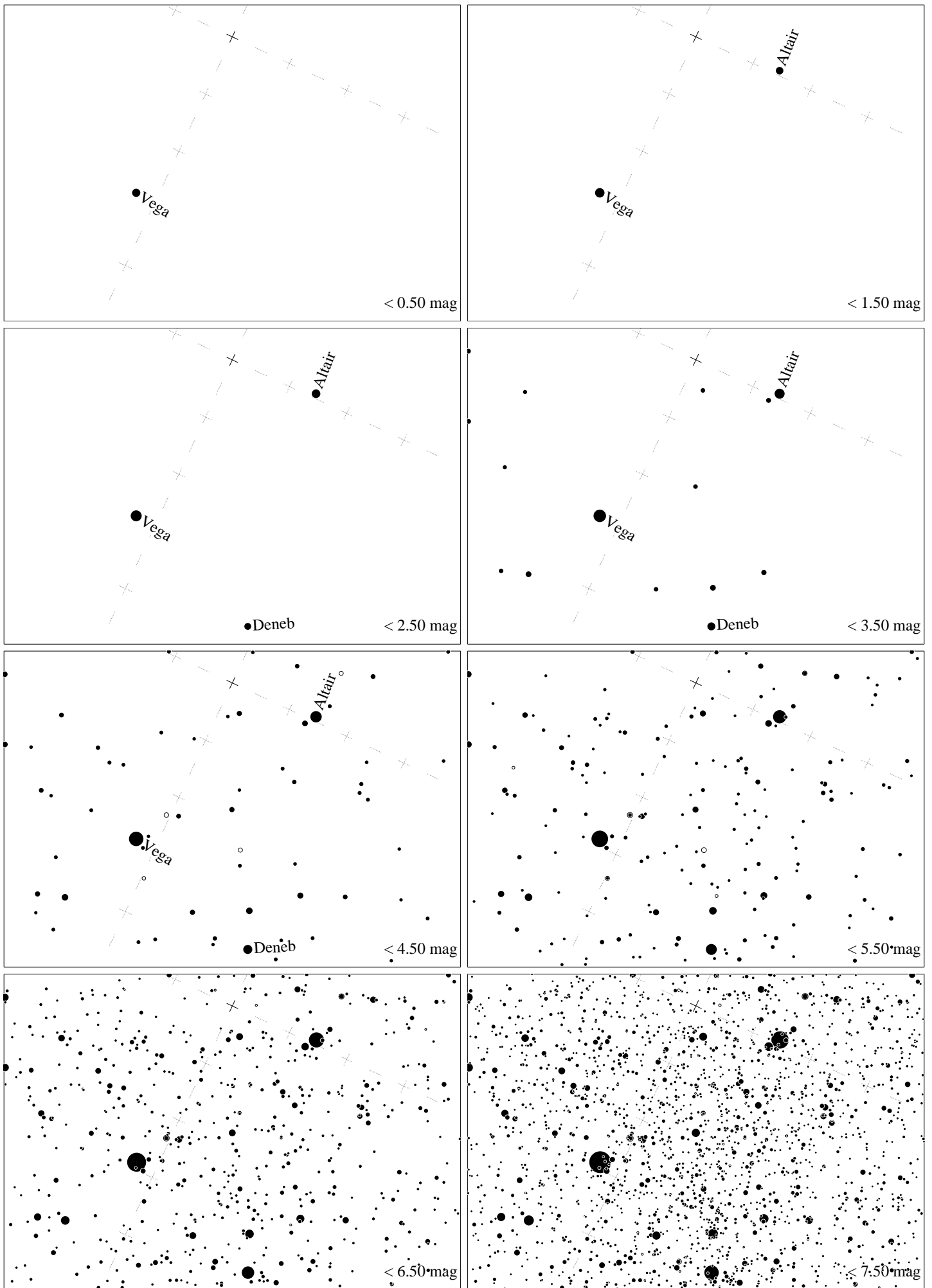
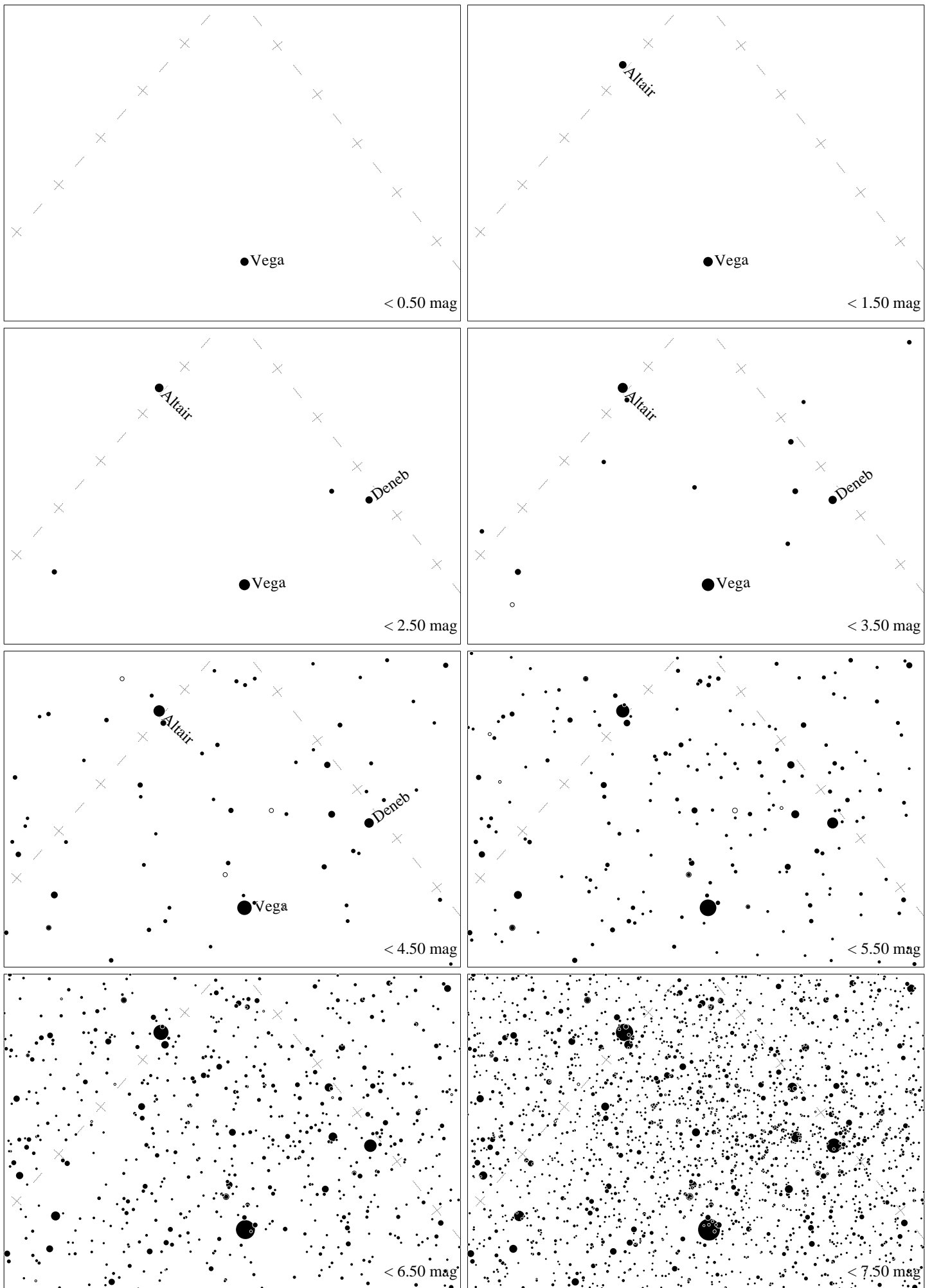


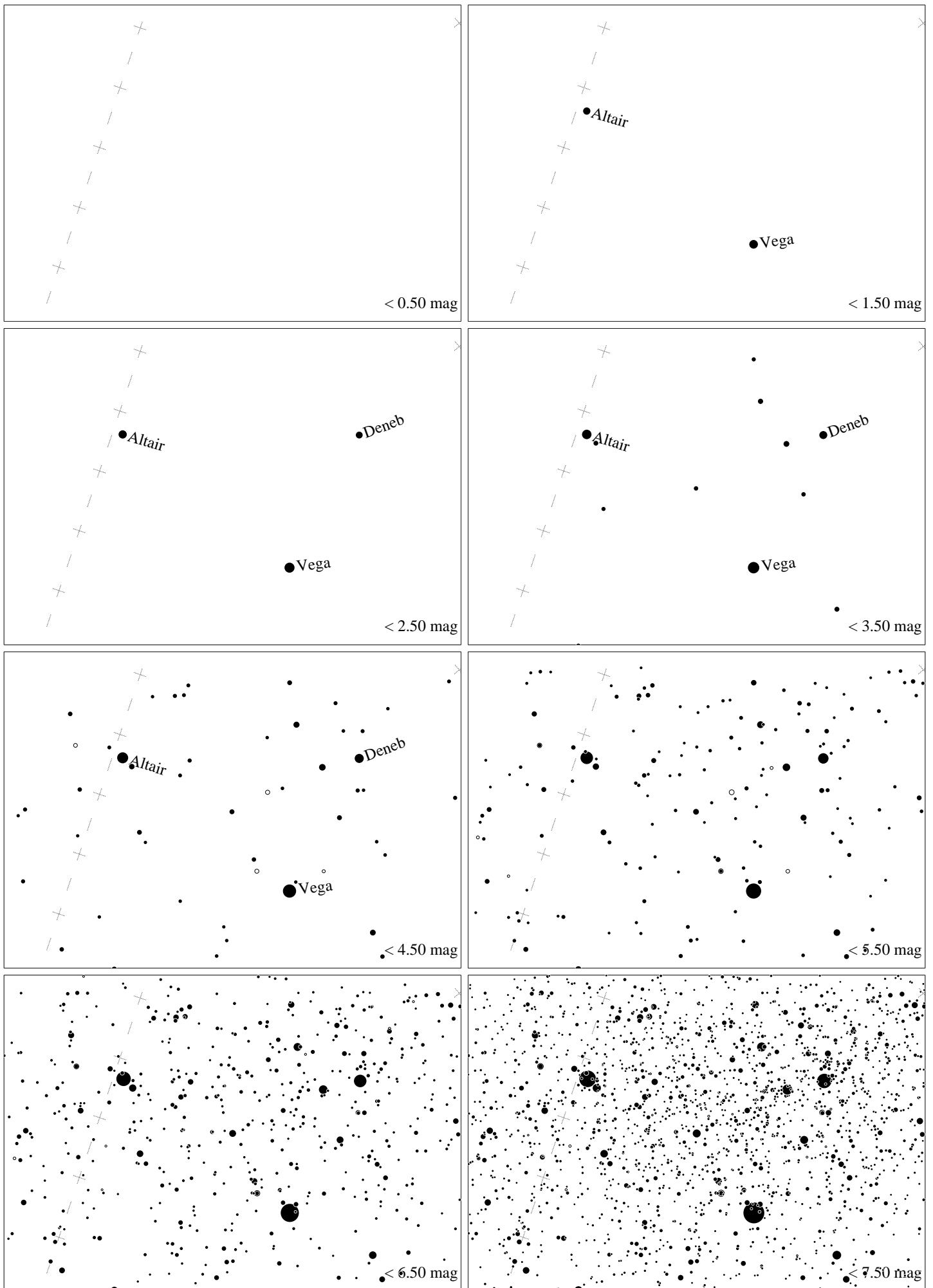
Maps for Globe at Night latitude 10° , 2025-07-20, 21 h local time (Sun at -35°), transparent air. Lines from N(E,S,W) to zenith shown (crosses each 10°). Centered on Albireo (β Cygni), 58° to the right from N, at 49° height, near the centre of Summer Triangle. Map vertical size is 50° . *Jan Hollan, CzechGlobe*



Maps for Globe at Night latitude 10° , 2025-08-19, 21 h local time (Sun at -39°), transparent air. Lines from N(E,S,W) to zenith shown (crosses each 10°). Centered on Albireo (β Cygni), 25° to the right from N, at 70° height, near the centre of Summer Triangle. Map vertical size is 50° . *Jan Hollan, CzechGlobe*



Maps for Globe at Night latitude 10°, 2025-09-18, 21 h local time (Sun at -45°), transparent air. Lines from N(E,S,W) to zenith shown (crosses each 10°). Centered on Albireo (β Cygni), 44° to the left from N, at 64° height, near the centre of Summer Triangle. Map vertical size is 50°. *Jan Hollan, CzechGlobe*



Maps for Globe at Night latitude 10° , 2025-10-17, 21 h local time (Sun at -49°), transparent air. Lines from N(E,S,W) to zenith shown (crosses each 10°). Centered on Albireo (β Cygni), 61° to the left from N, at 41° height, near the centre of Summer Triangle. Map vertical size is 50° . *Jan Hollan, CzechGlobe*