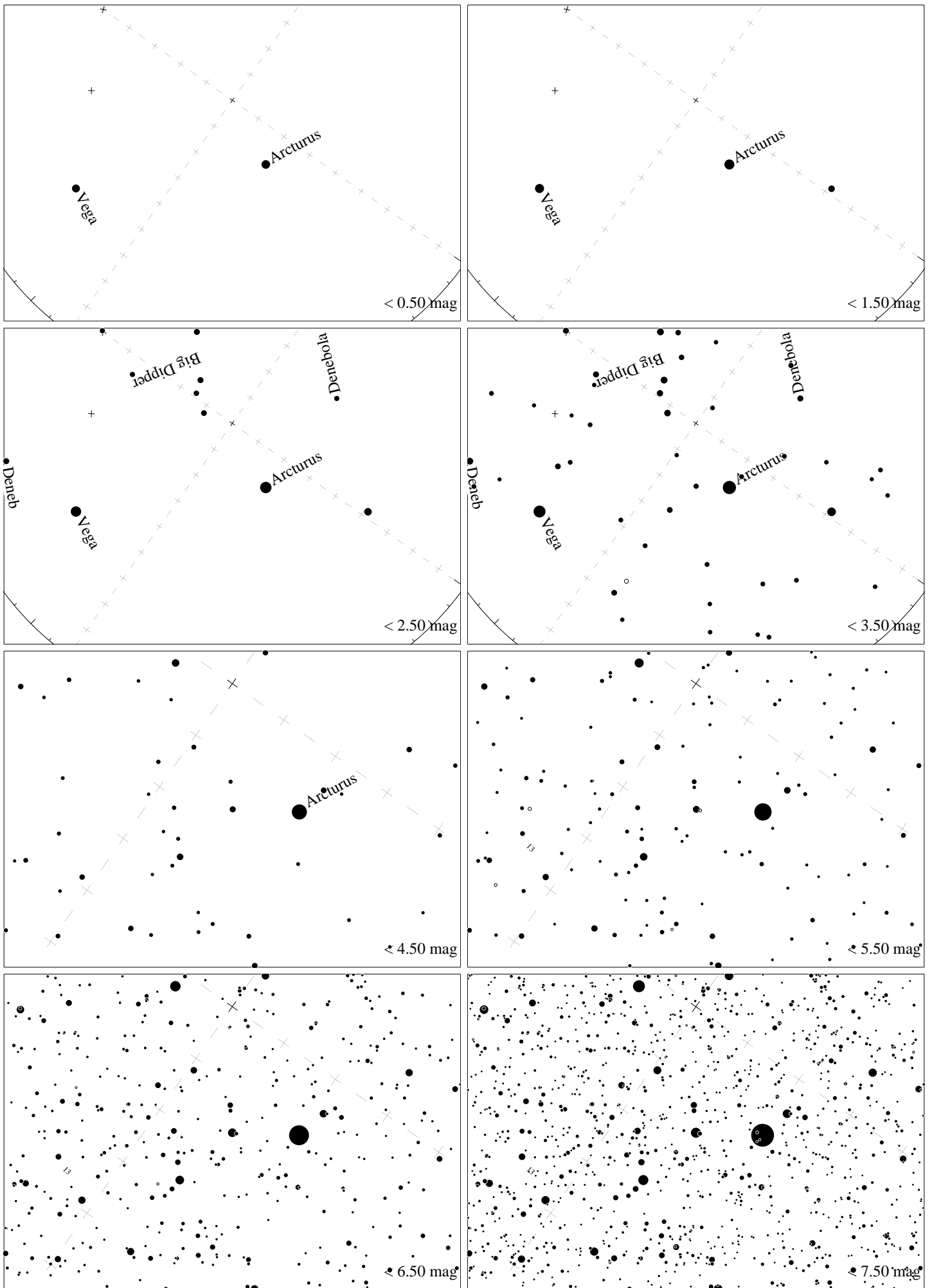
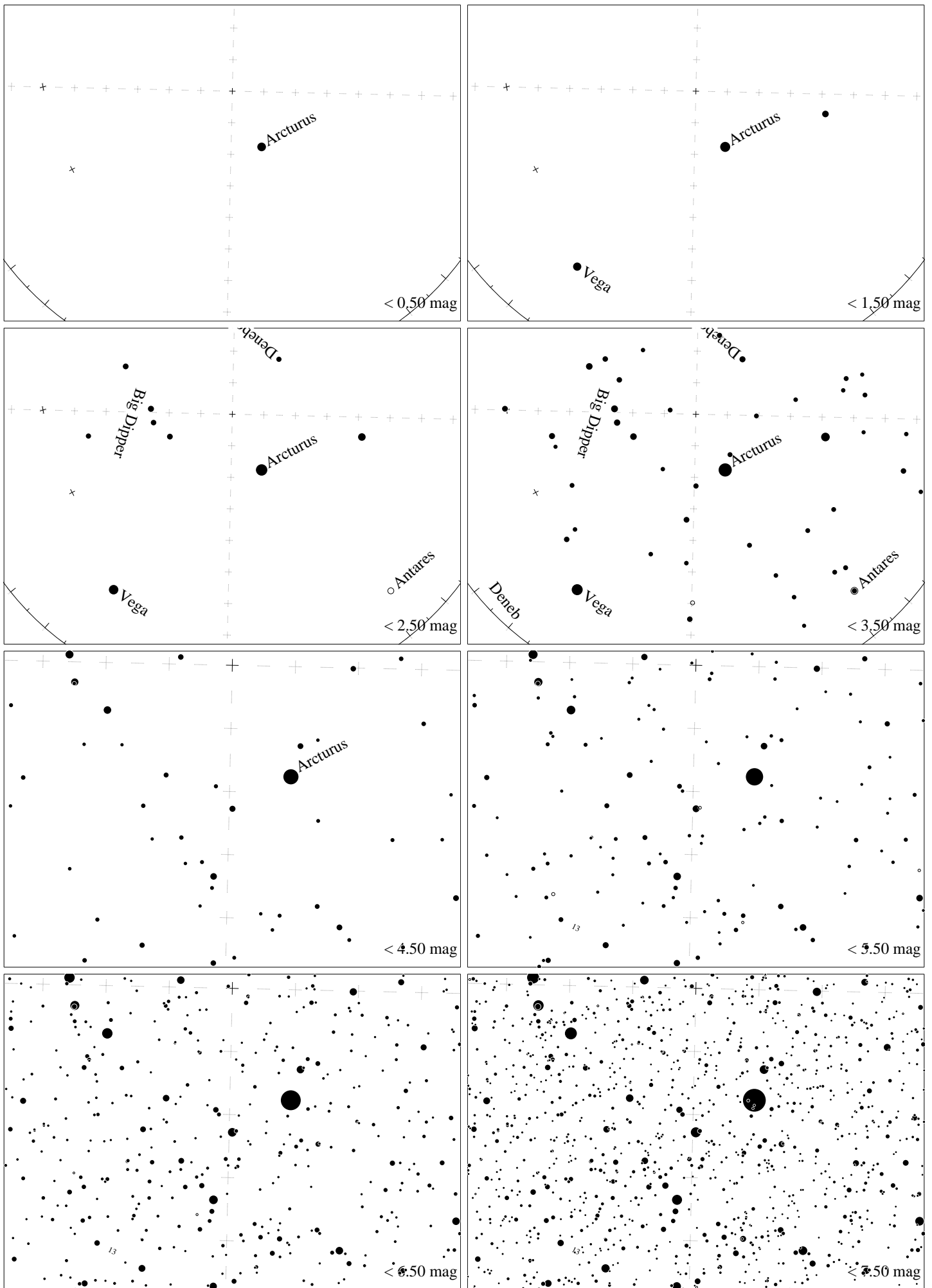


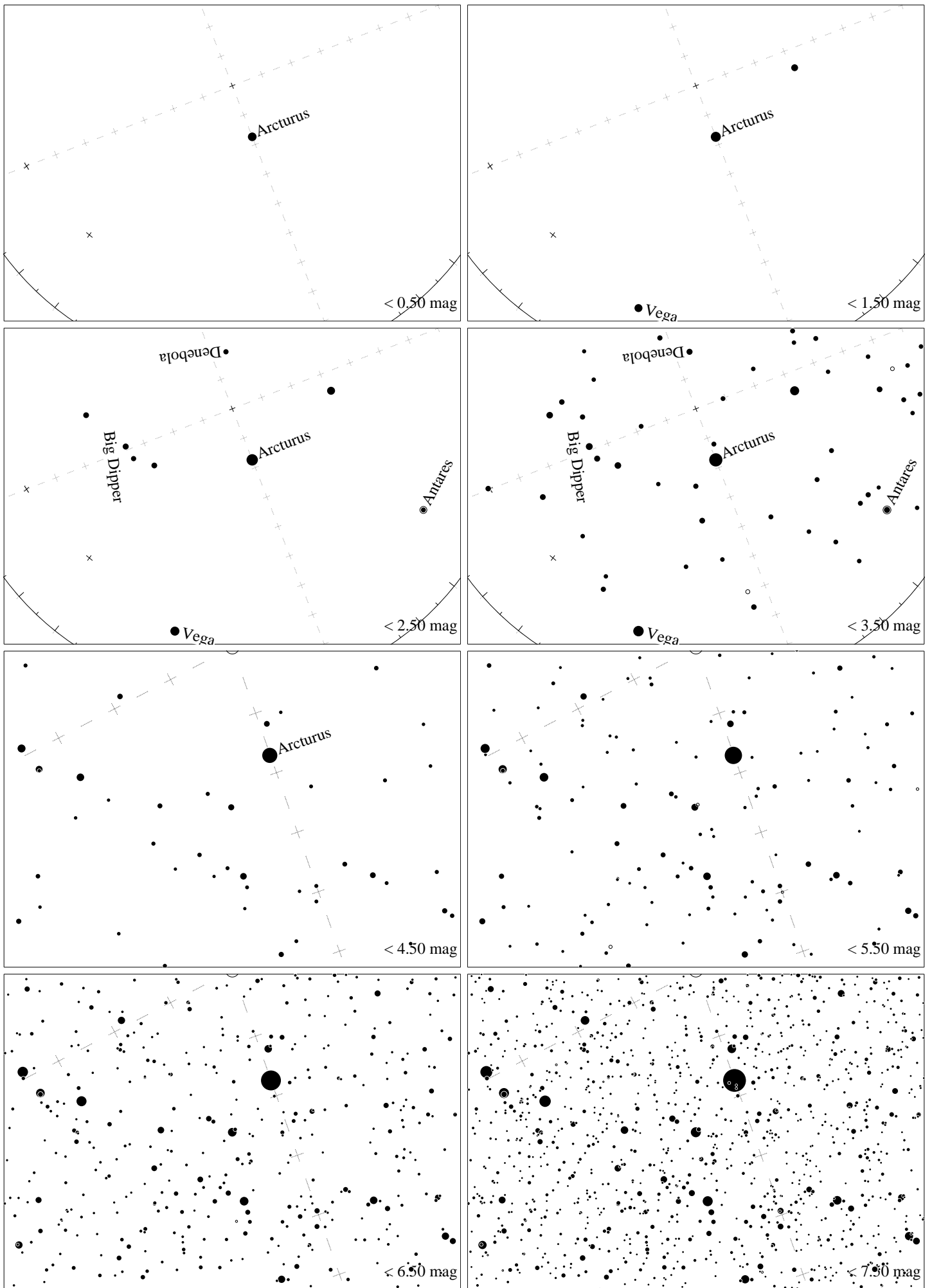
Maps for Globe at Night latitude 50° , 2025-05-22, 23:30 local time (Sun at -19°), transparent air. Lines from N(E,S,W) to zenith shown (crosses each 10°). Centered on Izar (ϵ Bootis), which is 26° to the right from S, at 65° height. Detailed maps 50° vertically, the first four maps 100° . *Jan Hollan, CzechGlobe*



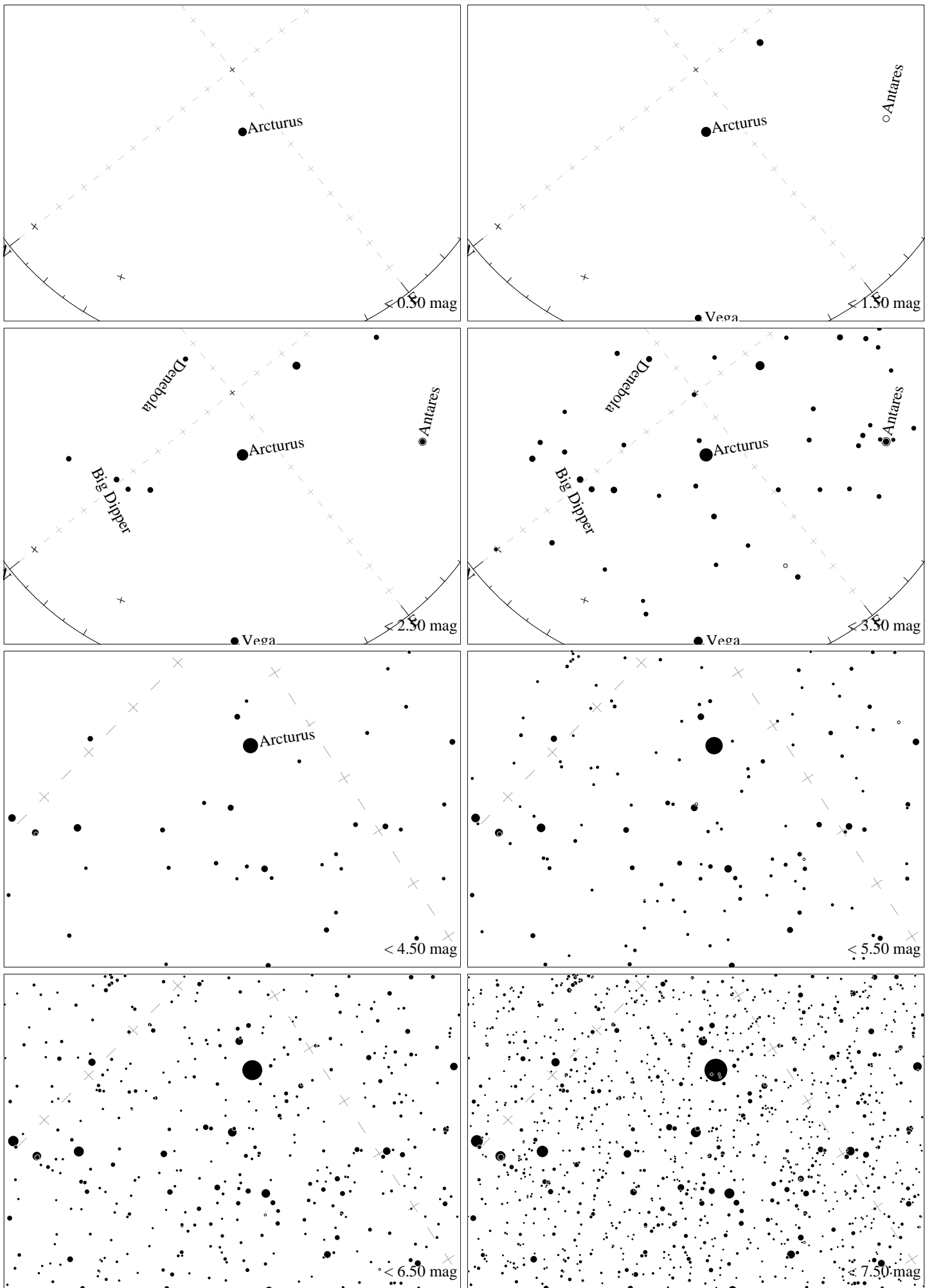
Maps for Globe at Night latitude 40° , 2025-05-22, 21:30 local time (Sun at -20°), transparent air. Lines from N(E,S,W) to zenith shown (crosses each 10°). Centered on Izar (ϵ Bootis), which is 55° to the left from S, at 70° height. Detailed maps 50° vertically, the first four maps 100° . *Jan Hollan, CzechGlobe*



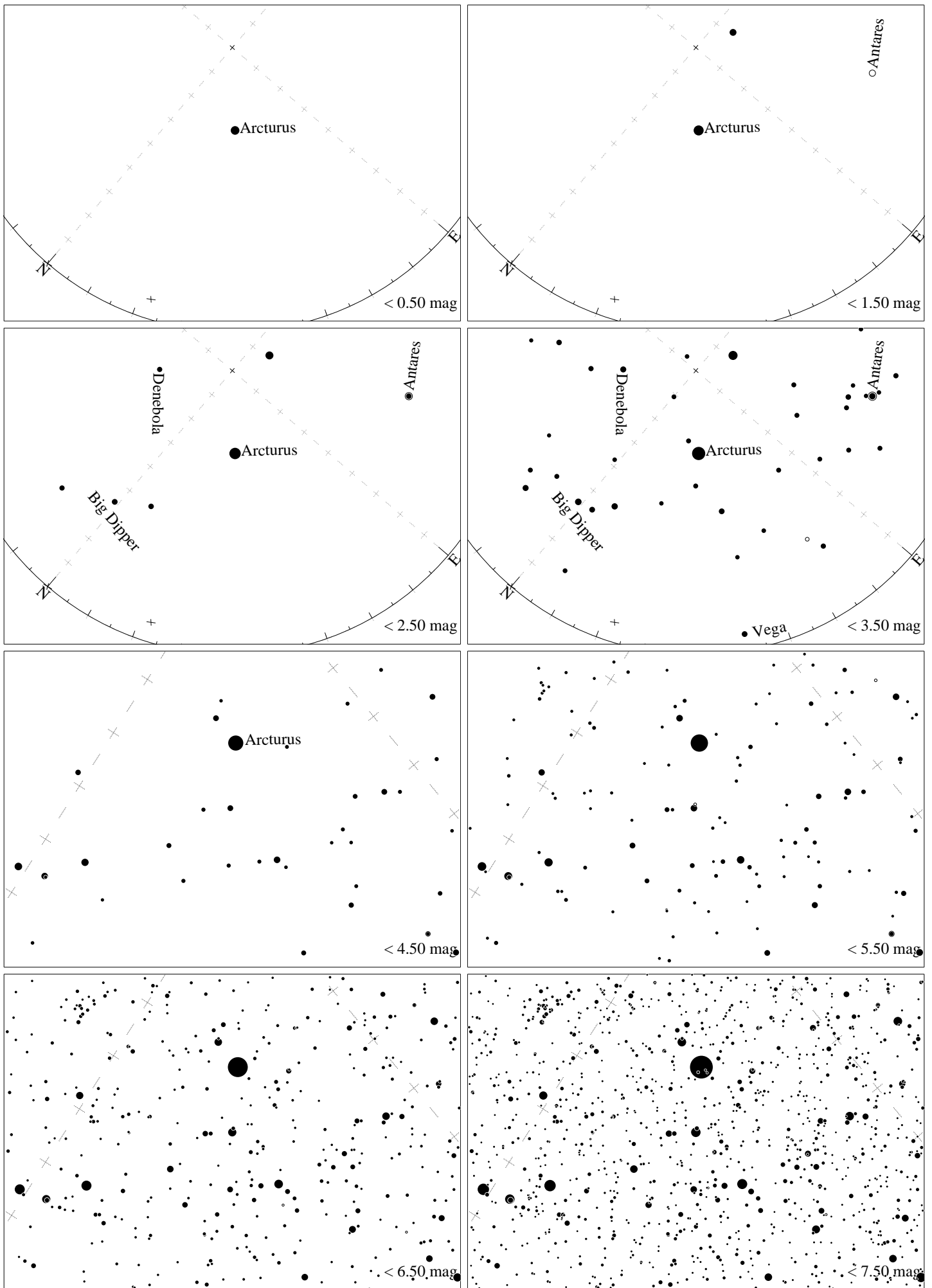
Maps for Globe at Night latitude 30° , 2025-05-22, 21 h local time (Sun at -24°), transparent air. Lines from N(E,S,W) to zenith shown (crosses each 10°). Centered on Izar (ϵ Bootis), which is 89° to the left from S, at 67° height. Detailed maps 50° vertically, the first four maps 100° . *Jan Hollan, CzechGlobe*



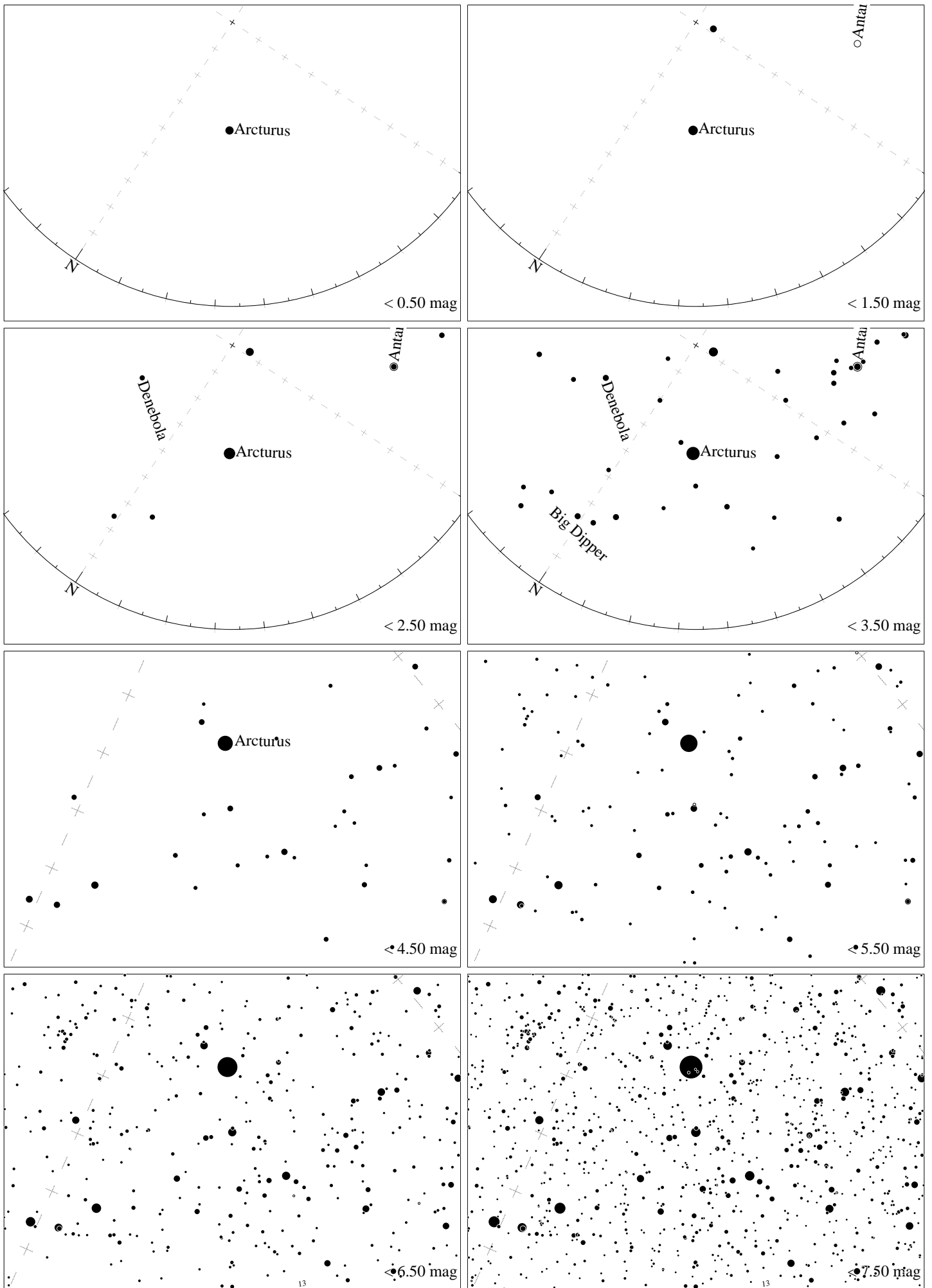
Maps for Globe at Night latitude 20° , 2025-05-22, 21 h local time (Sun at -31°), transparent air. Lines from N(E,S,W) to zenith shown (crosses each 10°). Centered on Izar (ϵ Bootis), which is 69° to the right from N, at 65° height. Detailed maps 50° vertically, the first four maps 100° . *Jan Hollan, CzechGlobe*



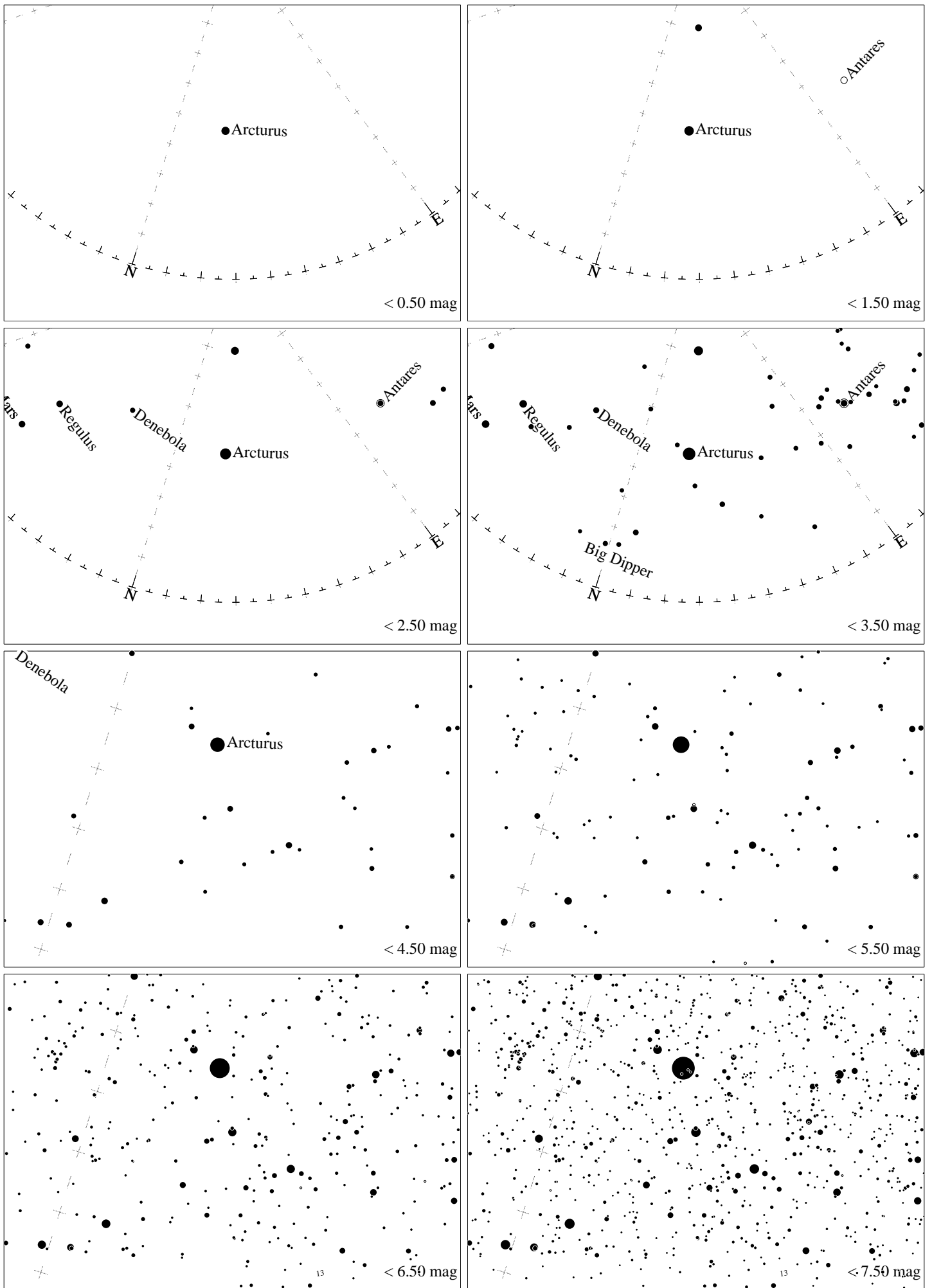
Maps for Globe at Night latitude 10° , 2025-05-22, 21 h local time (Sun at -37°), transparent air. Lines from N(E,S,W) to zenith shown (crosses each 10°). Centered on Izar (ϵ Bootis), which is 52° to the right from N, at 60° height. Detailed maps 50° vertically, the first four maps 100° . *Jan Hollan, CzechGlobe*



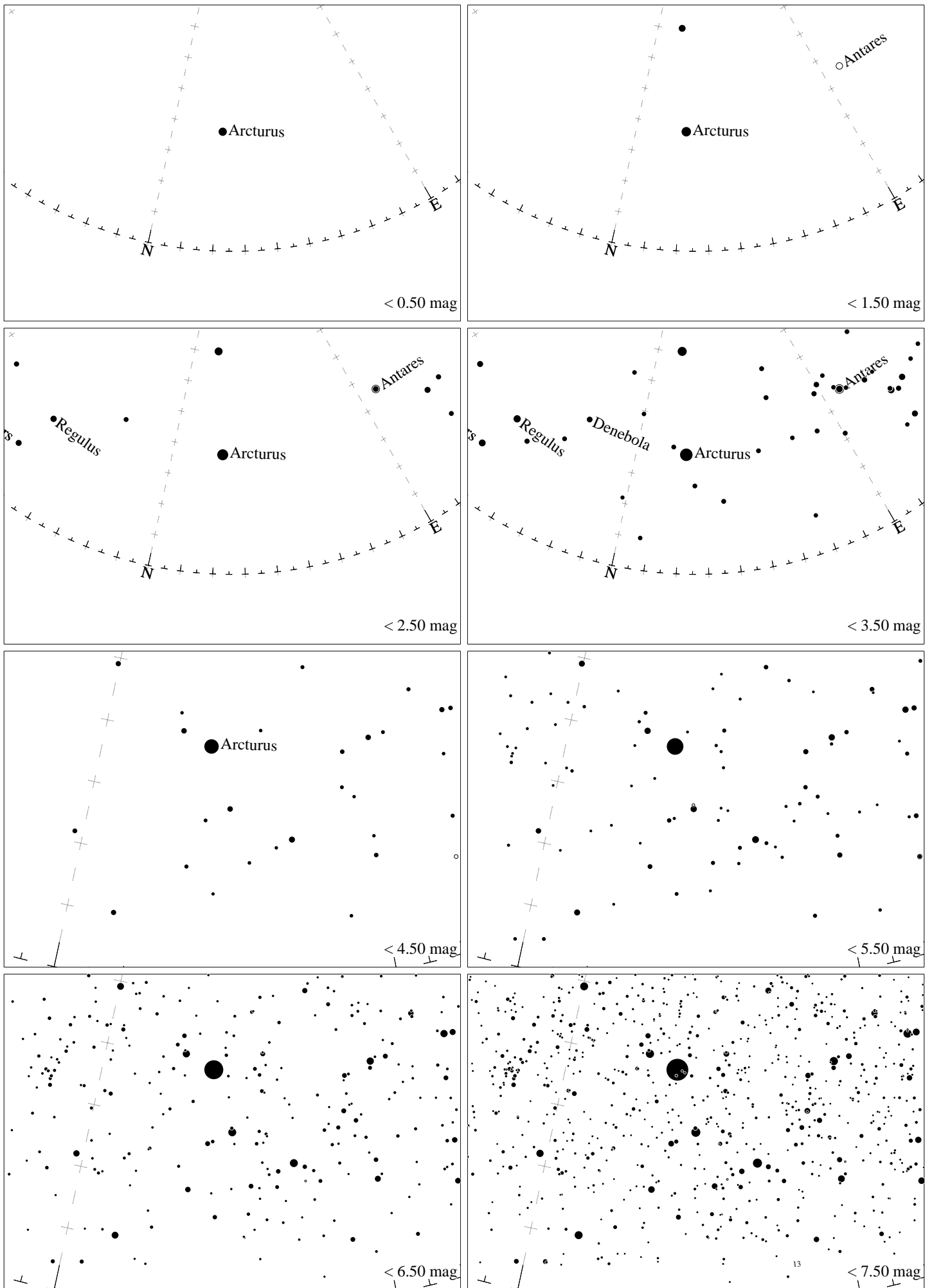
Maps for Globe at Night latitude 0° , 2025-05-22, 21 h local time (Sun at -42°), transparent air. Lines from N(E,S,W) to zenith shown (crosses each 10°). Centered on Izar (ϵ Bootis), which is 41° to the right from N, at 53° height. Detailed maps 50° vertically, the first four maps 100° . *Jan Hollan, CzechGlobe*



Maps for Globe at Night latitude -10° , 2025-05-22, 21 h local time (Sun at -46°), transparent air. Lines from N(E,S,W) to zenith shown (crosses each 10°). Centered on Izar (ϵ Bootis), which is 34° to the right from N, at 45° height. Detailed maps 50° vertically, the first four maps 100° . *Jan Hollan, CzechGlobe*



Maps for Globe at Night latitude -20° , 2025-05-22, 21 h local time (Sun at -49°), transparent air. Lines from N(E,S,W) to zenith shown (crosses each 10°). Centered on Izar (ϵ Bootis), which is 29° to the right from N, at 37° height. Detailed maps 50° vertically, the first four maps 100° . *Jan Hollan, CzechGlobe*



Maps for Globe at Night latitude -30° , 2025-05-22, 21 h local time (Sun at -49°), transparent air. Lines from N(E,S,W) to zenith shown (crosses each 10°). Centered on Izar (ϵ Bootis), which is 26° to the right from N, at 28° height. Detailed maps 50° vertically, the first four maps 100° . *Jan Hollan, CzechGlobe*