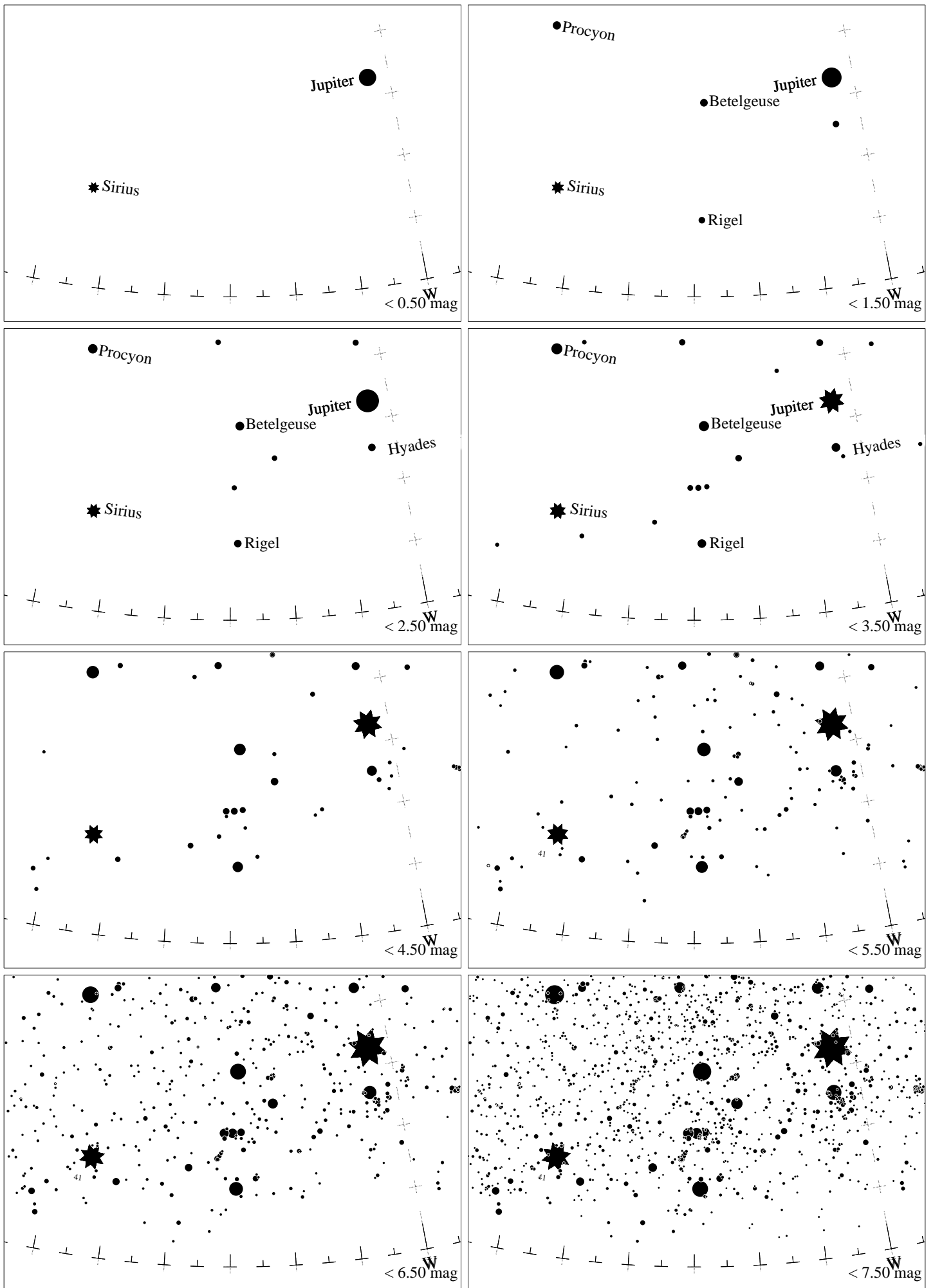
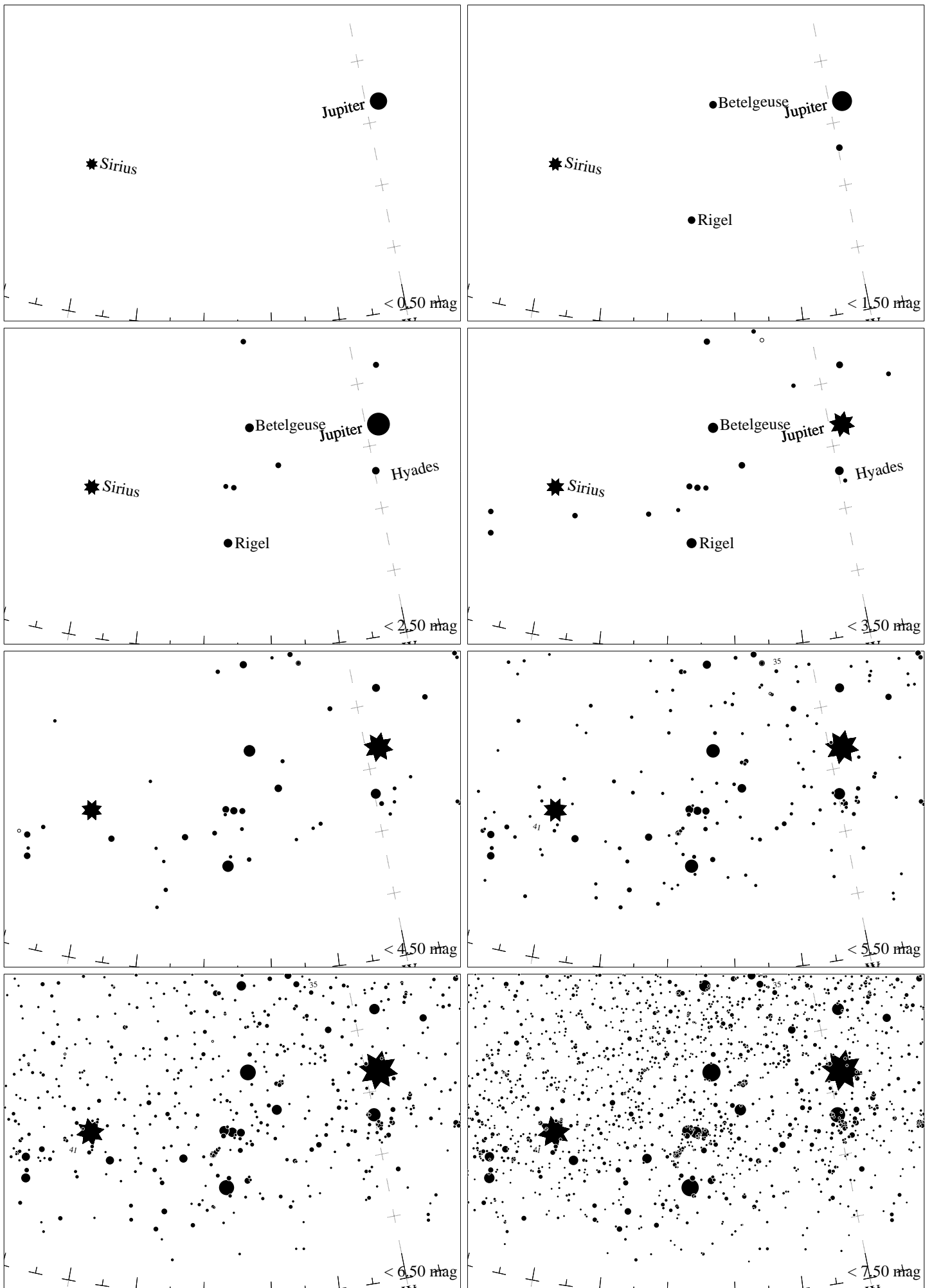


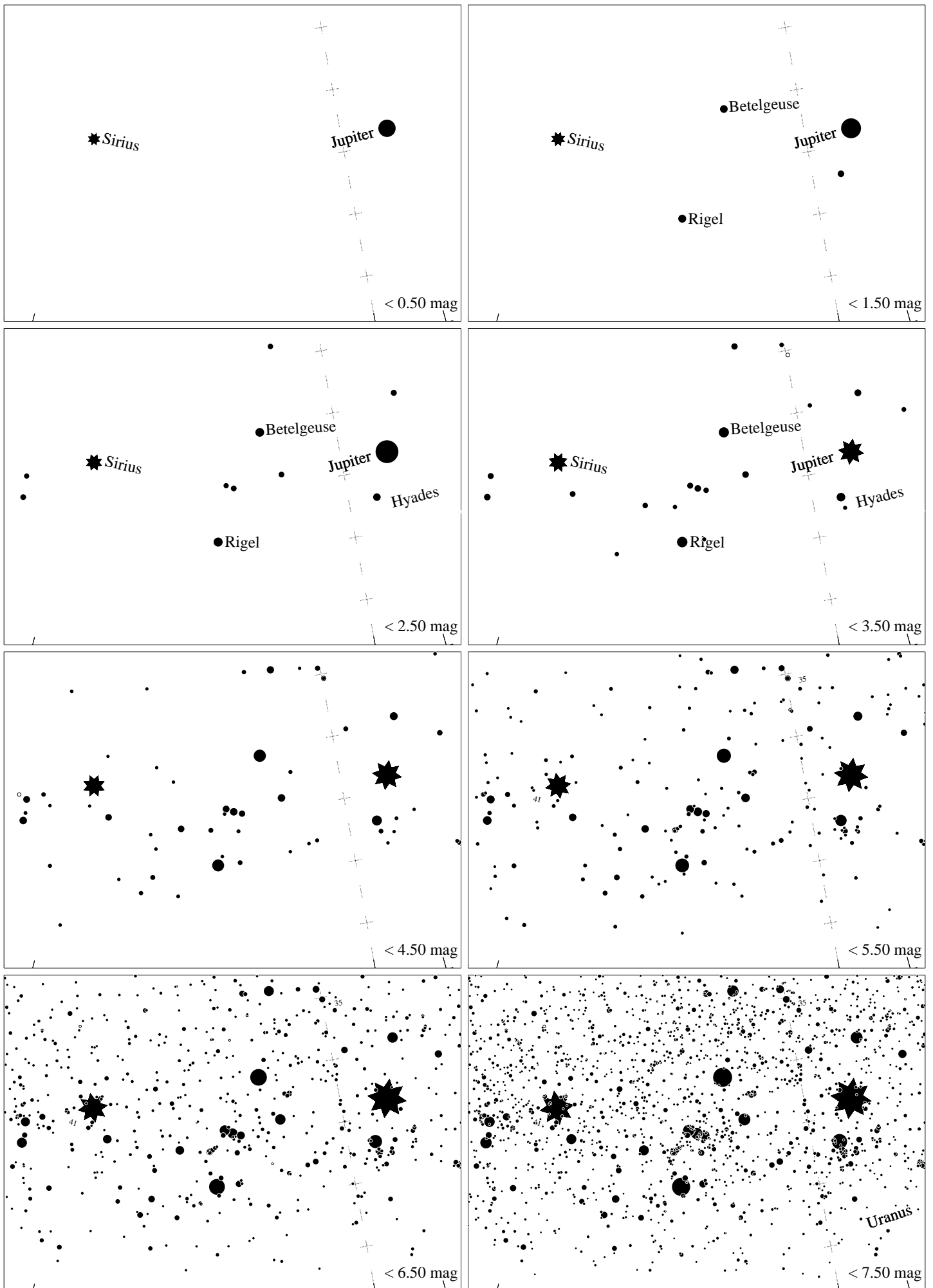
Maps for Globe at Night at latitude  $60^\circ$ , 2025-03-25, 21:00 local time (Sun at  $-18^\circ$ ), transparent air. Lines from N(E,S,W) to zenith shown (crosses each  $10^\circ$ ). Orion's belt is  $57^\circ$  to the right from S, at  $16^\circ$  height. Star clusters M 41 and M35 marked when appropriate. Map vertical size is  $50^\circ$ . *Jan Hollan maps, CzechGlobe*



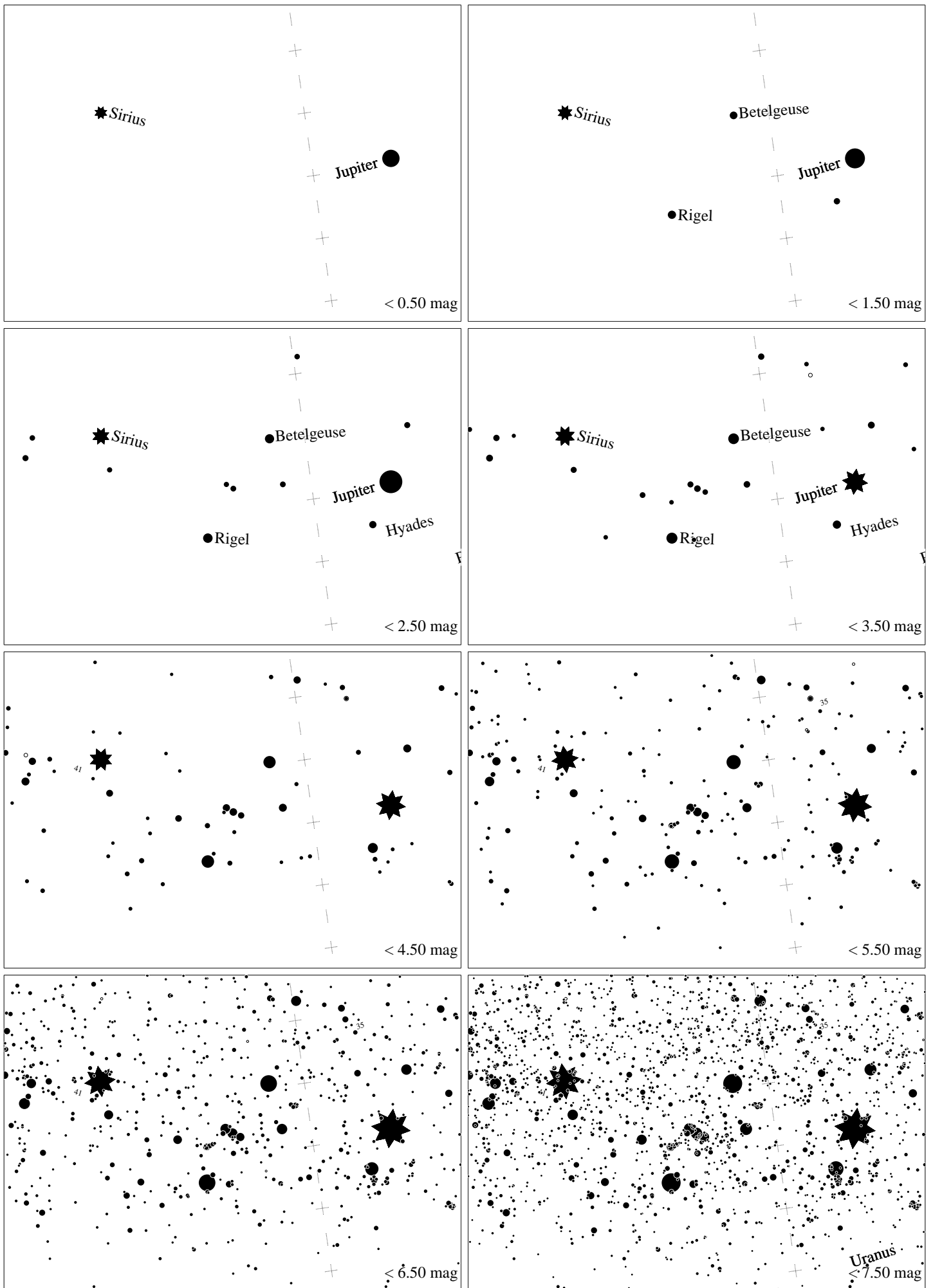
Maps for Globe at Night at latitude  $50^\circ$ , 2025-03-25, 21:00 local time (Sun at  $-24^\circ$ ), transparent air. Lines from N(E,S,W) to zenith shown (crosses each  $10^\circ$ ). Orion's belt is  $60^\circ$  to the right from S, at  $21^\circ$  height. Star clusters M 41 and M35 marked when appropriate. Map vertical size is  $50^\circ$ . *Jan Hollan maps, CzechGlobe*



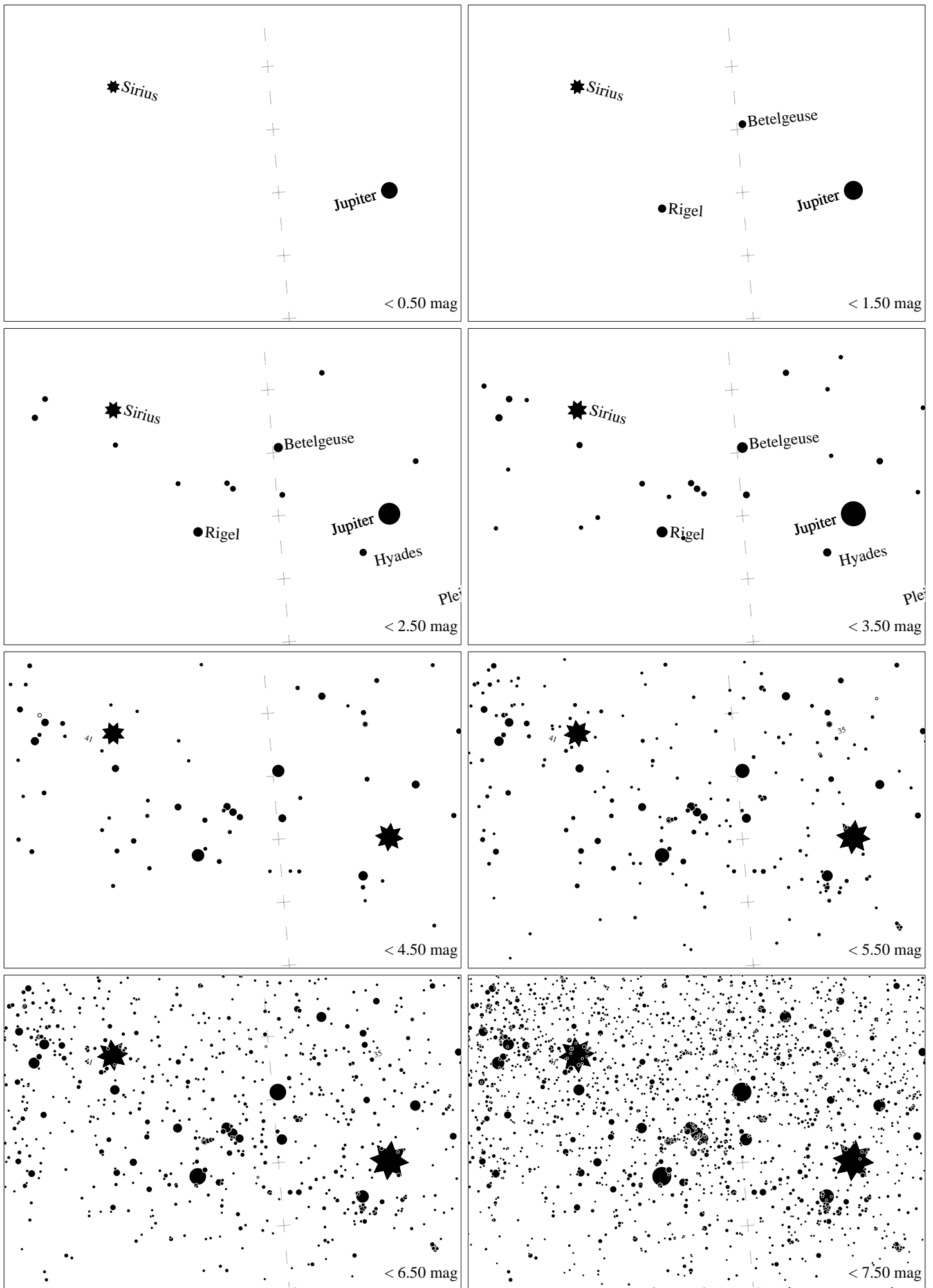
Maps for Globe at Night at latitude  $40^\circ$ , 2025-03-25, 21:00 local time (Sun at  $-30^\circ$ ), transparent air. Lines from N(E,S,W) to zenith shown (crosses each  $10^\circ$ ). Orion's belt is  $64^\circ$  to the right from S, at  $26^\circ$  height. Star clusters M 41 and M 35 marked when appropriate. Map vertical size is  $50^\circ$ . *Jan Hollan maps, CzechGlobe*



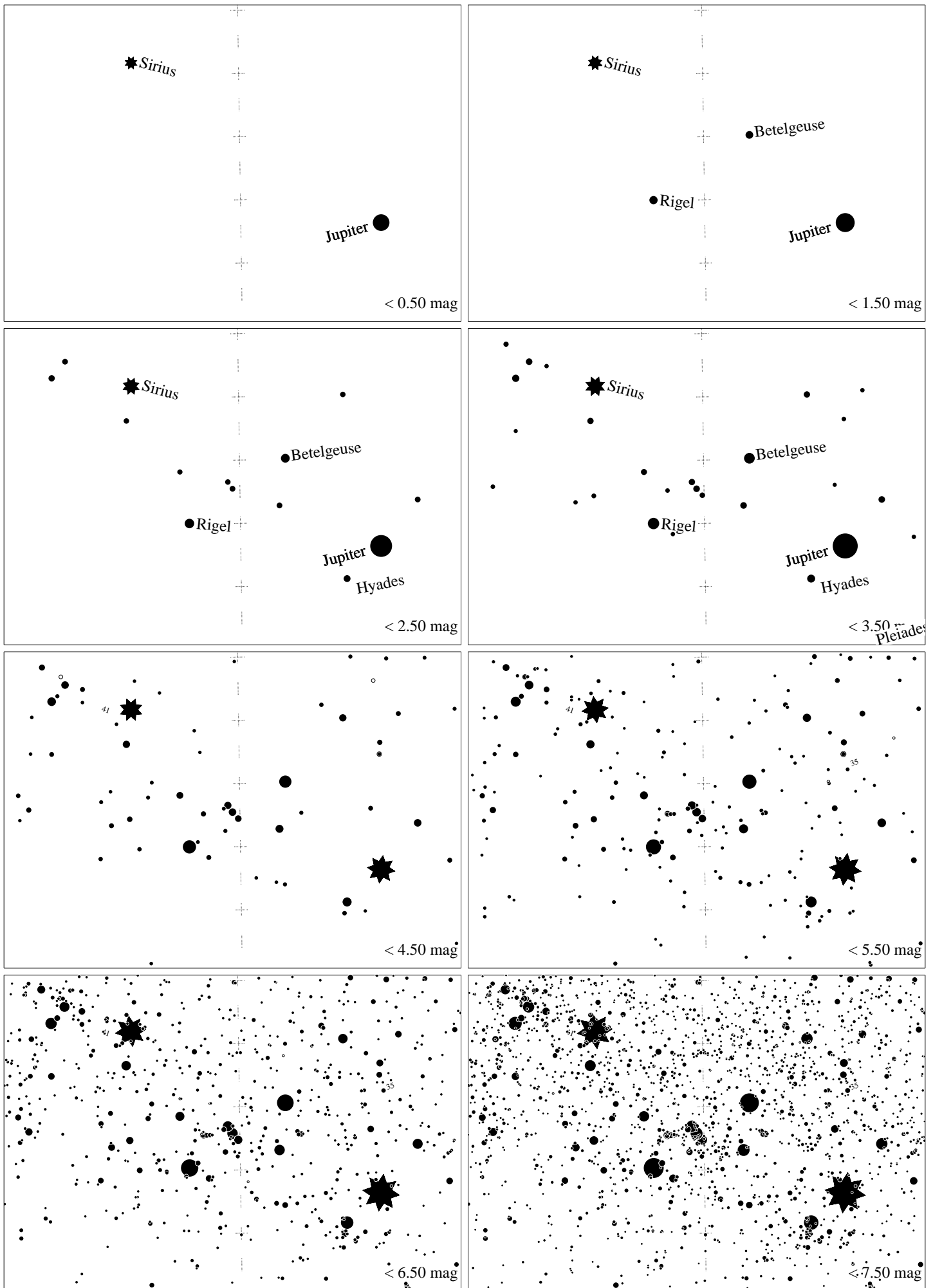
Maps for Globe at Night at latitude  $30^\circ$ , 2025-03-25, 21:00 local time (Sun at  $-35^\circ$ ), transparent air. Lines from N(E,S,W) to zenith shown (crosses each  $10^\circ$ ). Orion's belt is  $69^\circ$  to the right from S, at  $30^\circ$  height. Star clusters M 41 and M35 marked when appropriate. Map vertical size is  $50^\circ$ . *Jan Hollan maps, CzechGlobe*



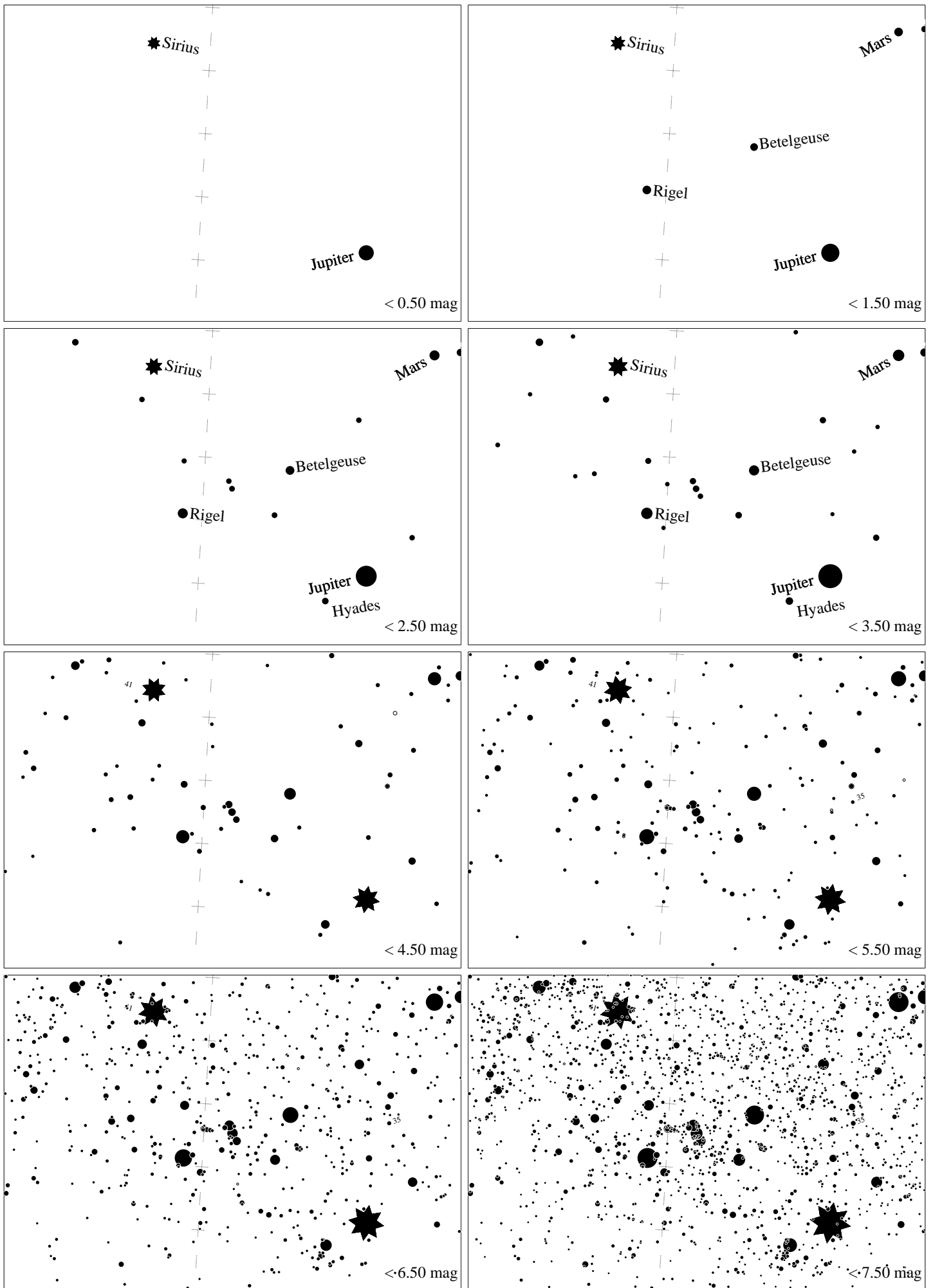
Maps for Globe at Night at latitude  $20^\circ$ , 2025-03-25, 21:00 local time (Sun at  $-39^\circ$ ), transparent air. Lines from N(E,S,W) to zenith shown (crosses each  $10^\circ$ ). Orion's belt is  $75^\circ$  to the right from S, at  $33^\circ$  height. Star clusters M 41 and M35 marked when appropriate. Map vertical size is  $50^\circ$ . *Jan Hollan maps, CzechGlobe*



Maps for Globe at Night at latitude  $10^\circ$ , 2025-03-25, 21:00 local time (Sun at  $-42^\circ$ ), transparent air. Lines from N(E,S,W) to zenith shown (crosses each  $10^\circ$ ). Orion's belt is  $81^\circ$  to the right from S, at  $35^\circ$  height. Star clusters M 41 and M35 marked when appropriate. Map vertical size is  $50^\circ$ . *Jan Hollan maps, CzechGlobe*

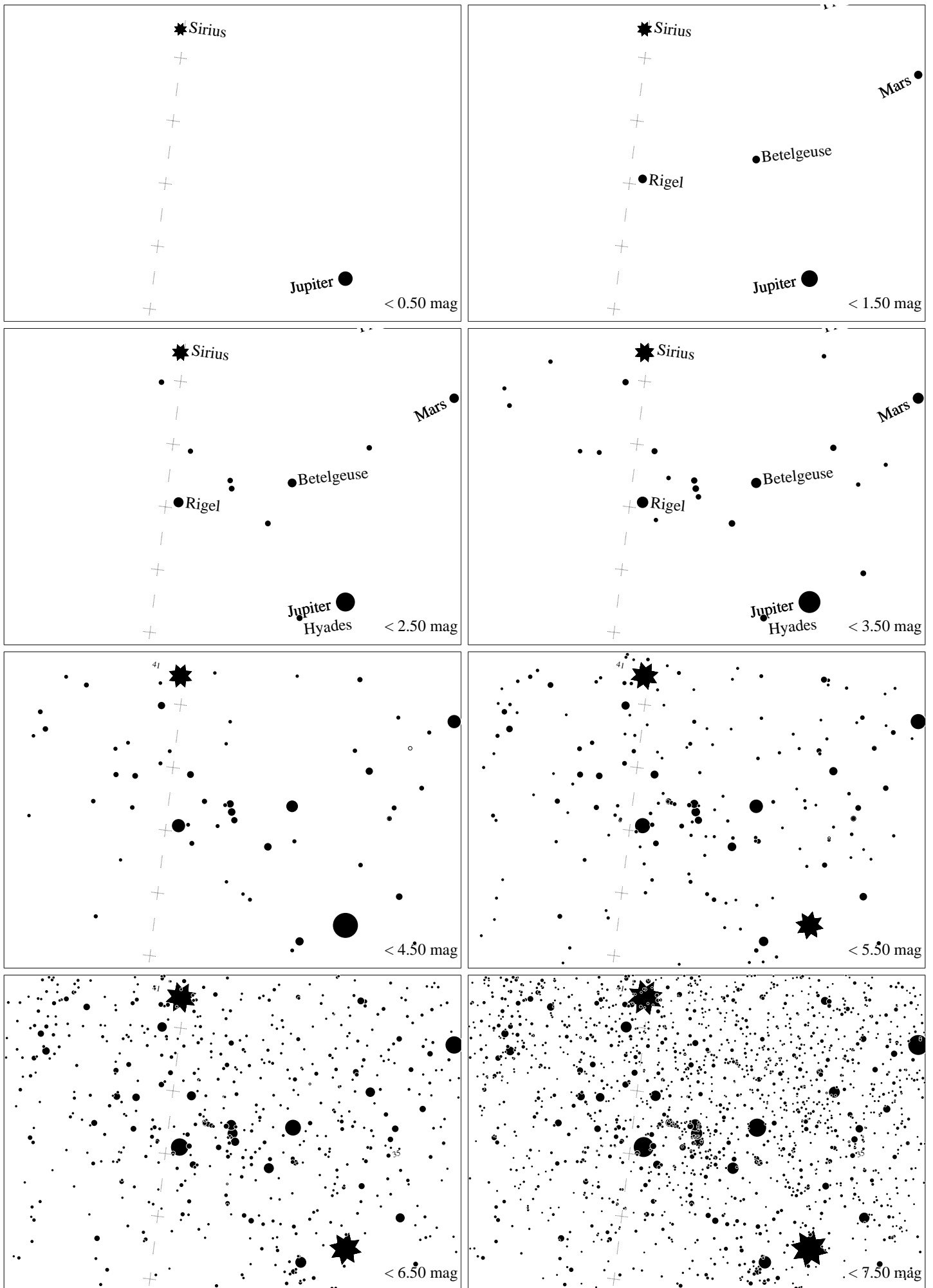


Maps for Globe at Night at latitude  $0^\circ$ , 2025-03-25, 21:00 local time (Sun at  $-44^\circ$ ), transparent air. Lines from N(E,S,W) to zenith shown (crosses each  $10^\circ$ ). Orion's belt is  $89^\circ$  to the right from S, at  $36^\circ$  height. Star clusters M 41 and M 35 marked when appropriate. Map vertical size is  $50^\circ$ . *Jan Hollan maps, CzechGlobe*

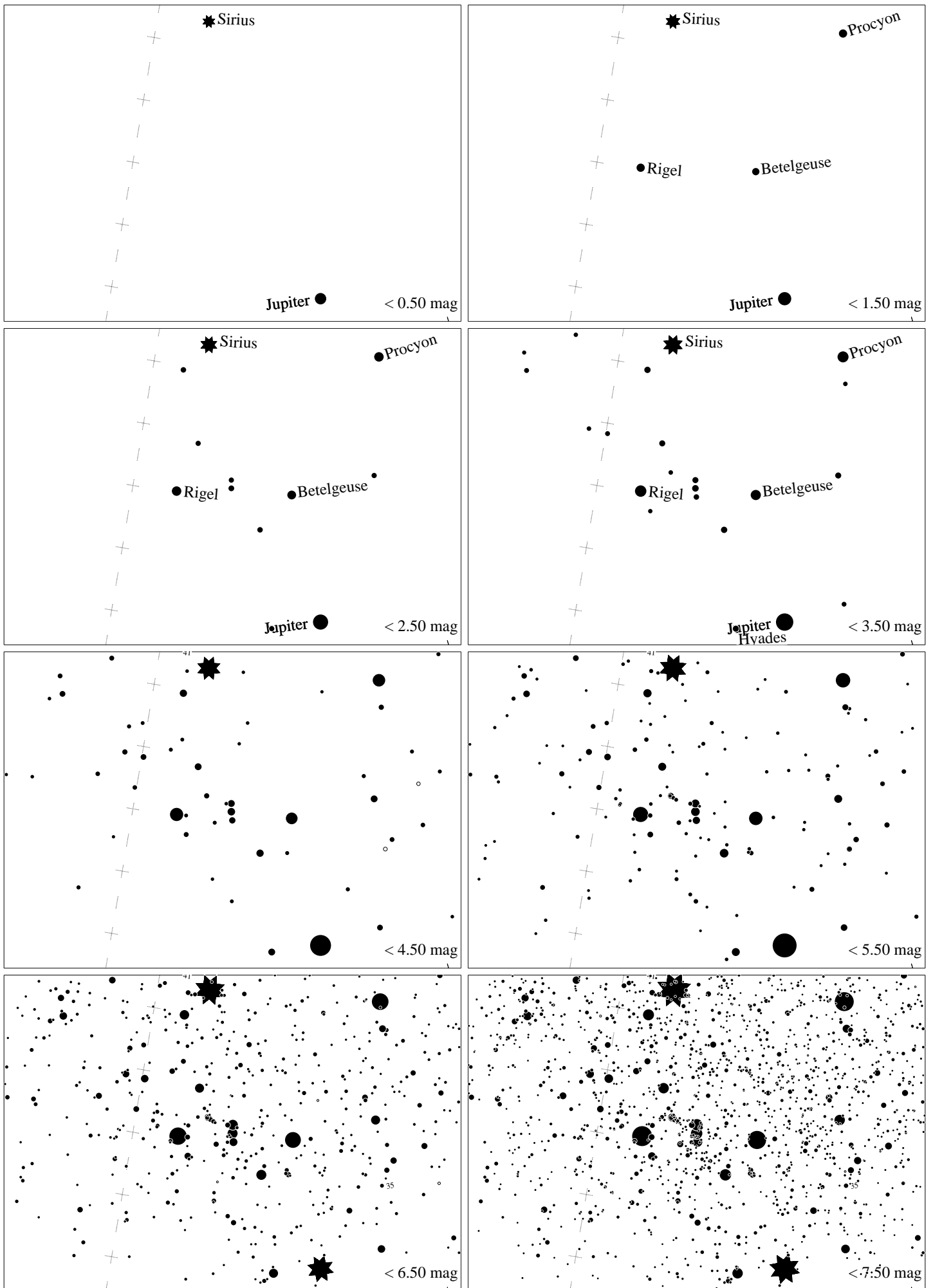


Maps for Globe at Night at latitude  $-10^\circ$ , 2025-03-25, 21:00 local time (Sun at  $-43^\circ$ ), transparent air. Lines from N(E,S,W) to zenith shown (crosses each  $10^\circ$ ). Orion's belt is  $84^\circ$  to the left from N, at  $35^\circ$  height. Star clusters M 41 and M 35 marked when appropriate. Map vertical size is  $50^\circ$ . *Jan Hollan maps, CzechGlobe*

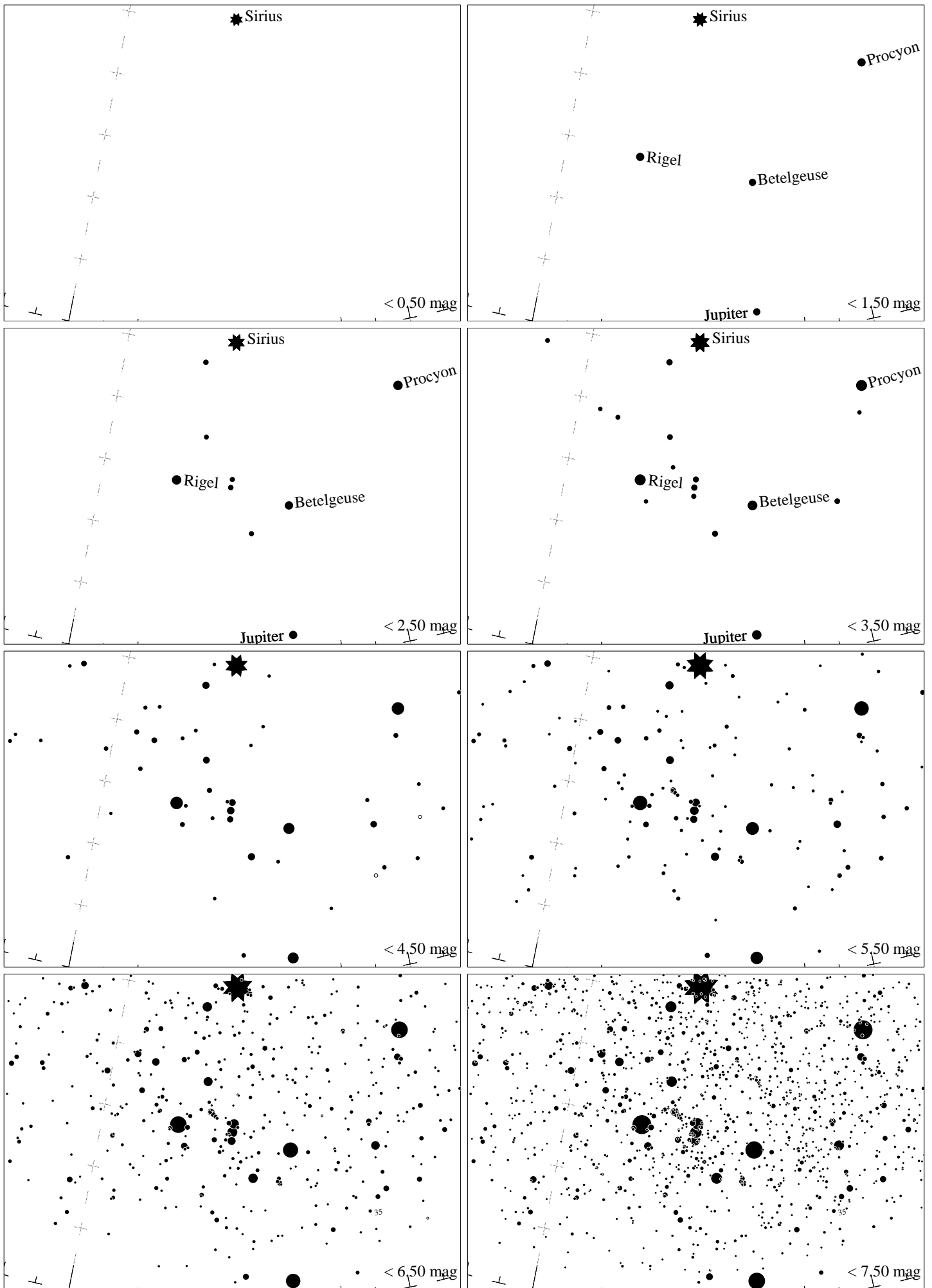




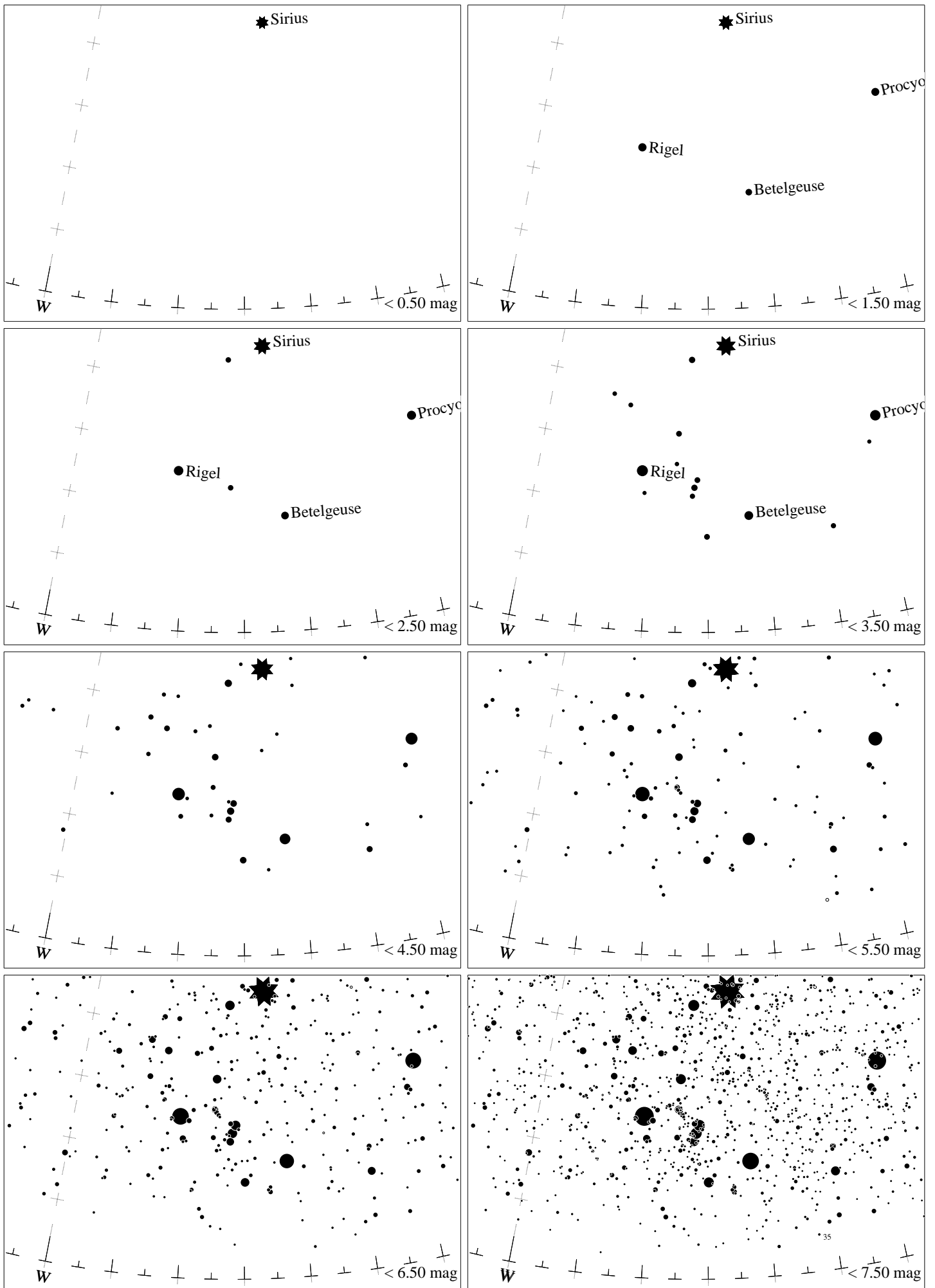
Maps for Globe at Night at latitude  $-20^\circ$ , 2025-03-25, 21:00 local time (Sun at  $-41^\circ$ ), transparent air. Lines from N(E,S,W) to zenith shown (crosses each  $10^\circ$ ). Orion's belt is  $77^\circ$  to the left from N, at  $34^\circ$  height. Star clusters M 41 and M 35 marked when appropriate. Map vertical size is  $50^\circ$ . *Jan Hollan maps, CzechGlobe*



Maps for Globe at Night at latitude  $-30^\circ$ , 2025-03-25, 21:00 local time (Sun at  $-38^\circ$ ), transparent air. Lines from N(E,S,W) to zenith shown (crosses each  $10^\circ$ ). Orion's belt is  $71^\circ$  to the left from N, at  $31^\circ$  height. Star clusters M 41 and M35 marked when appropriate. Map vertical size is  $50^\circ$ . *Jan Hollan maps, CzechGlobe*



Maps for Globe at Night at latitude  $-40^\circ$ , 2025-03-25, 21:00 local time (Sun at  $-34^\circ$ ), transparent air. Lines from N(E,S,W) to zenith shown (crosses each  $10^\circ$ ). Orion's belt is  $66^\circ$  to the left from N, at  $28^\circ$  height. Star clusters M 41 and M35 marked when appropriate. Map vertical size is  $50^\circ$ . *Jan Hollan maps, CzechGlobe*



Maps for Globe at Night at latitude  $-50^\circ$ , 2025-03-25, 21:00 local time (Sun at  $-28^\circ$ ), transparent air. Lines from N(E,S,W) to zenith shown (crosses each  $10^\circ$ ). Orion's belt is  $62^\circ$  to the left from N, at  $23^\circ$  height. Star clusters M 41 and M35 marked when appropriate. Map vertical size is  $50^\circ$ . *Jan Hollan maps, CzechGlobe*