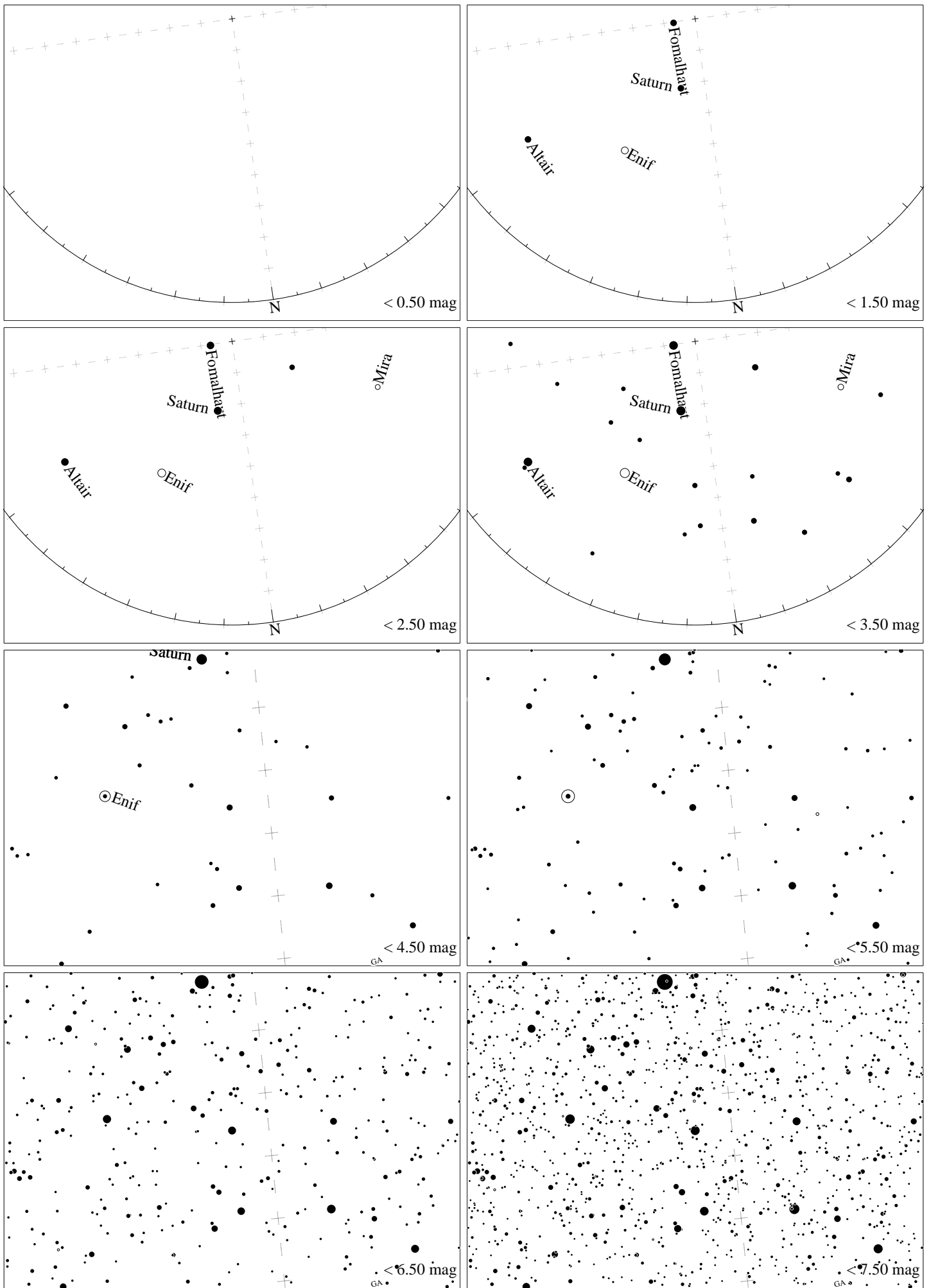
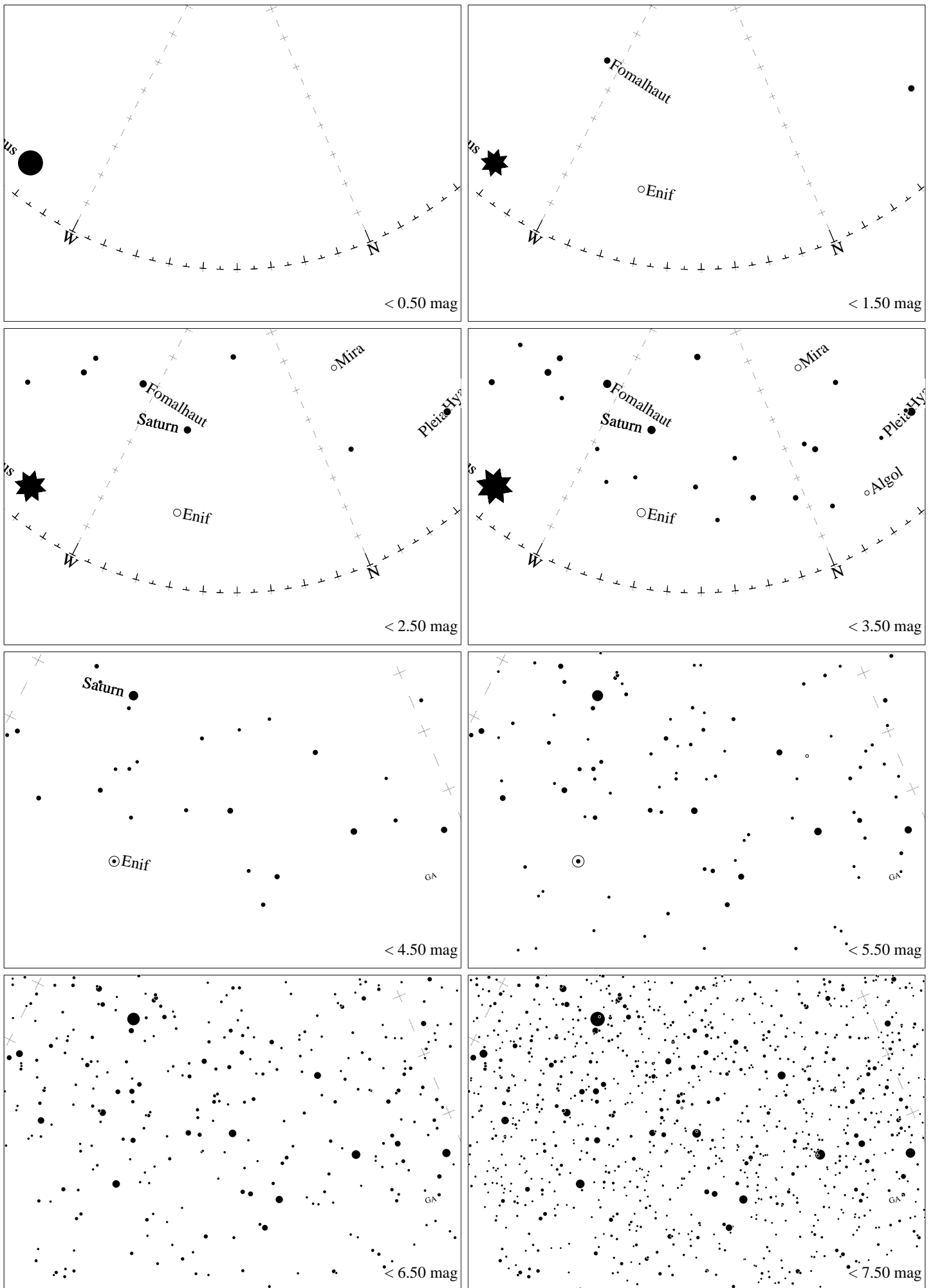


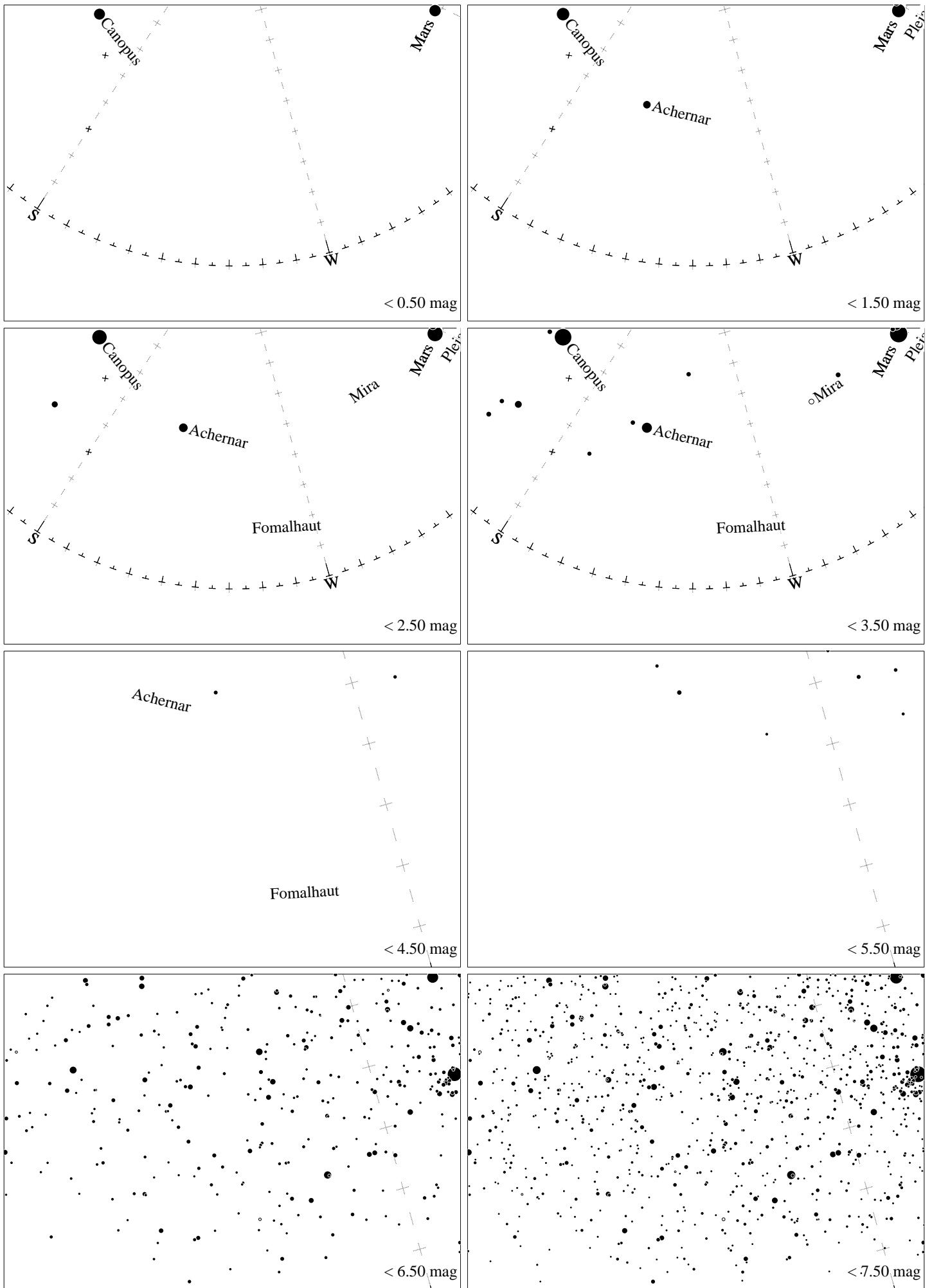
Maps for Globe at Night latitude -30° , 2024-09-28, 21 h local time (Sun at -38°), transparent air. Lines from N(E,S,W) to zenith shown (crosses each 10°). The map is centered on Markab (α Pegasi), which is 30° to the right from N, at 39° height. Detailed maps 50° vertically, the first four maps 100° . *Jan Hollan, CzechGlobe*



Maps for Globe at Night latitude -30° , 2024-10-28, 21 h local time (Sun at -31°), transparent air. Lines from N(E,S,W) to zenith shown (crosses each 10°). The map is centered on Markab (α Pegasi), which is 8° to the left from N, at 44° height. Detailed maps 50° vertically, the first four maps 100° . *Jan Hollan, CzechGlobe*



Maps for Globe at Night latitude -30° , 2024-11-26, 21 h local time (Sun at -25°), transparent air. Lines from N(E,S,W) to zenith shown (crosses each 10°). The map is centered on Markab (α Pegasi), which is 41° to the left from N, at 34° height. Detailed maps 50° vertically, the first four maps 100° . Jan Hollan, CzechGlobe



Maps for Globe at Night latitude -30° , 20254-12-26, 21 h local time (Sun at -28°), transparent air. Lines from N(E,S,W) to zenith shown (crosses each 10°). The map is centered on Markab (α Pegasi), which is 61° to the right from S, at 33° height. Detailed maps 50° vertically, the first four maps 100° . *Jan Hollan, CzechGlobe*