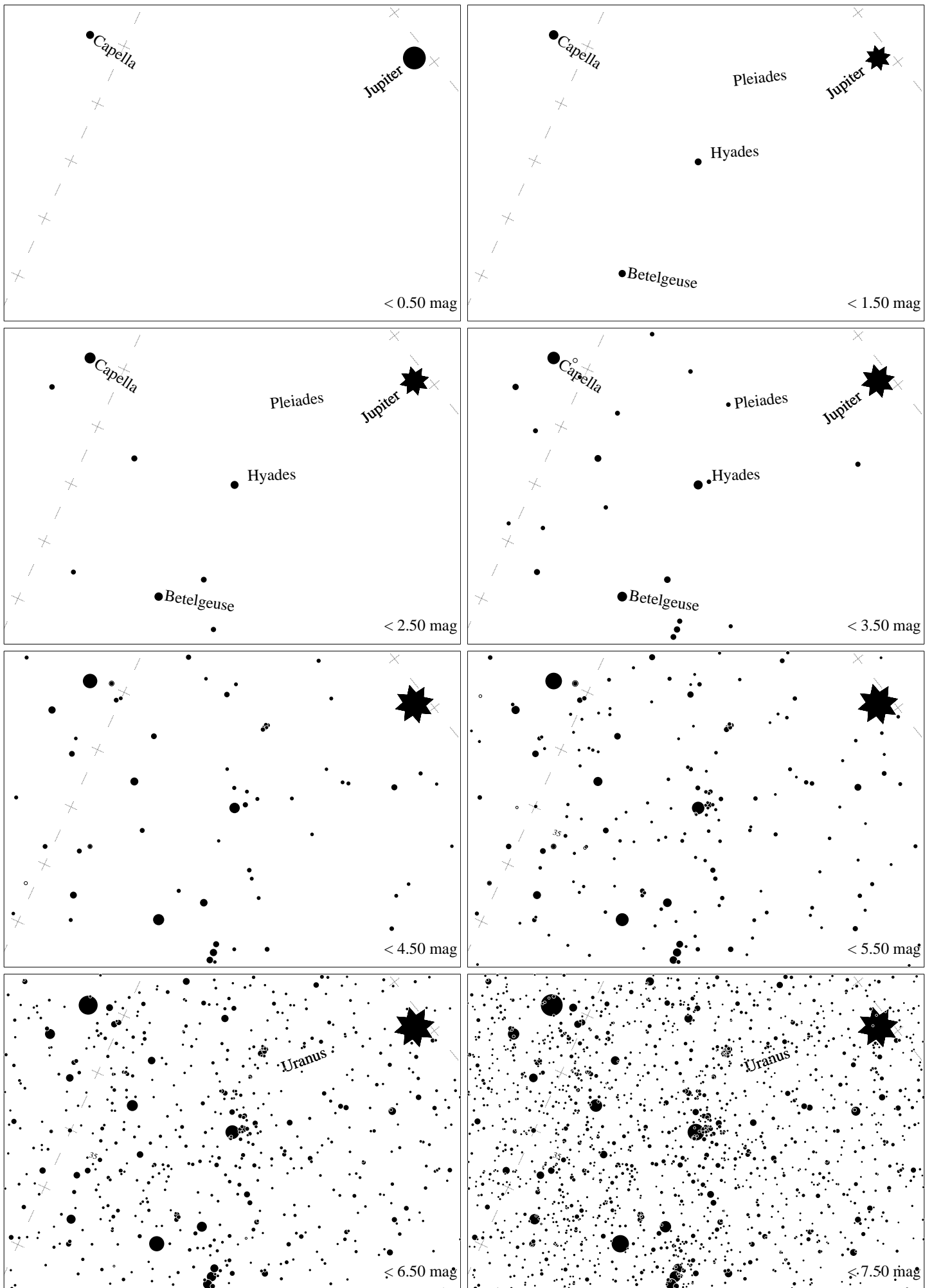
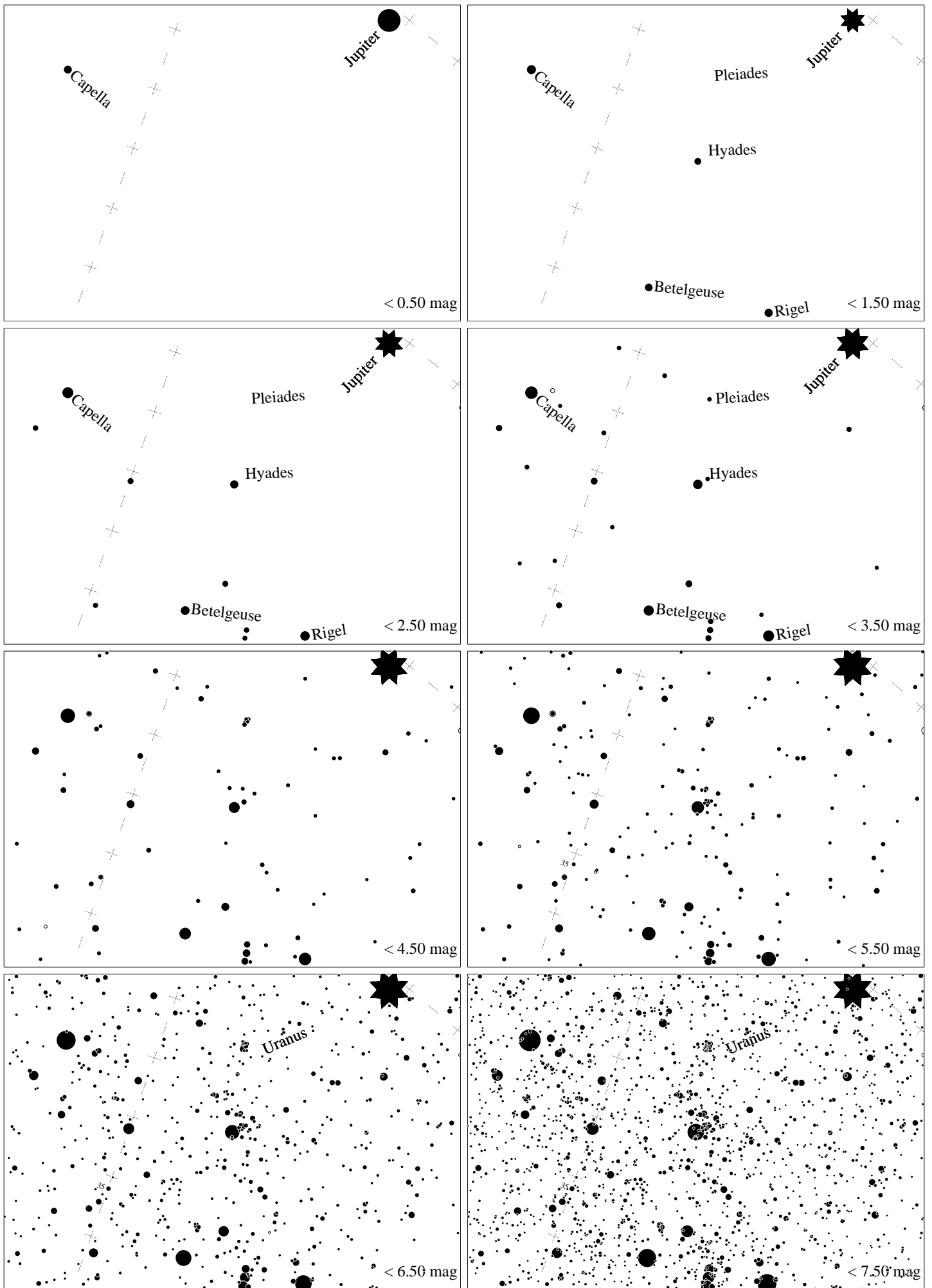


Maps for Globe at Night at latitude 60° , 2023-12-08, 21 h local time (Sun at -42°), transparent air. Lines from N(E,S,W) to zenith shown (crosses each 10°). Aldebaran is 48° to the left from S, at 39° height. Star cluster M35 marked when appropriate. Map vertical size is 50° . *Jan Hollan maps, CzechGlobe*



Maps for Globe at Night at latitude 50° , 2023-12-08, 21 h local time (Sun at -47°), transparent air. Lines from N(E,S,W) to zenith shown (crosses each 10°). Aldebaran is 55° to the left from S, at 45° height. Star cluster M35 marked when appropriate. Map vertical size is 50° . *Jan Hollan maps, CzechGlobe*



Maps for Globe at Night at latitude 40° , 2023-12-08, 21 h local time (Sun at -50°), transparent air. Lines from N(E,S,W) to zenith shown (crosses each 10°). Aldebaran is 65° to the left from S, at 50° height. Star cluster M35 marked when appropriate. Map vertical size is 50° . *Jan Hollan maps, CzechGlobe*