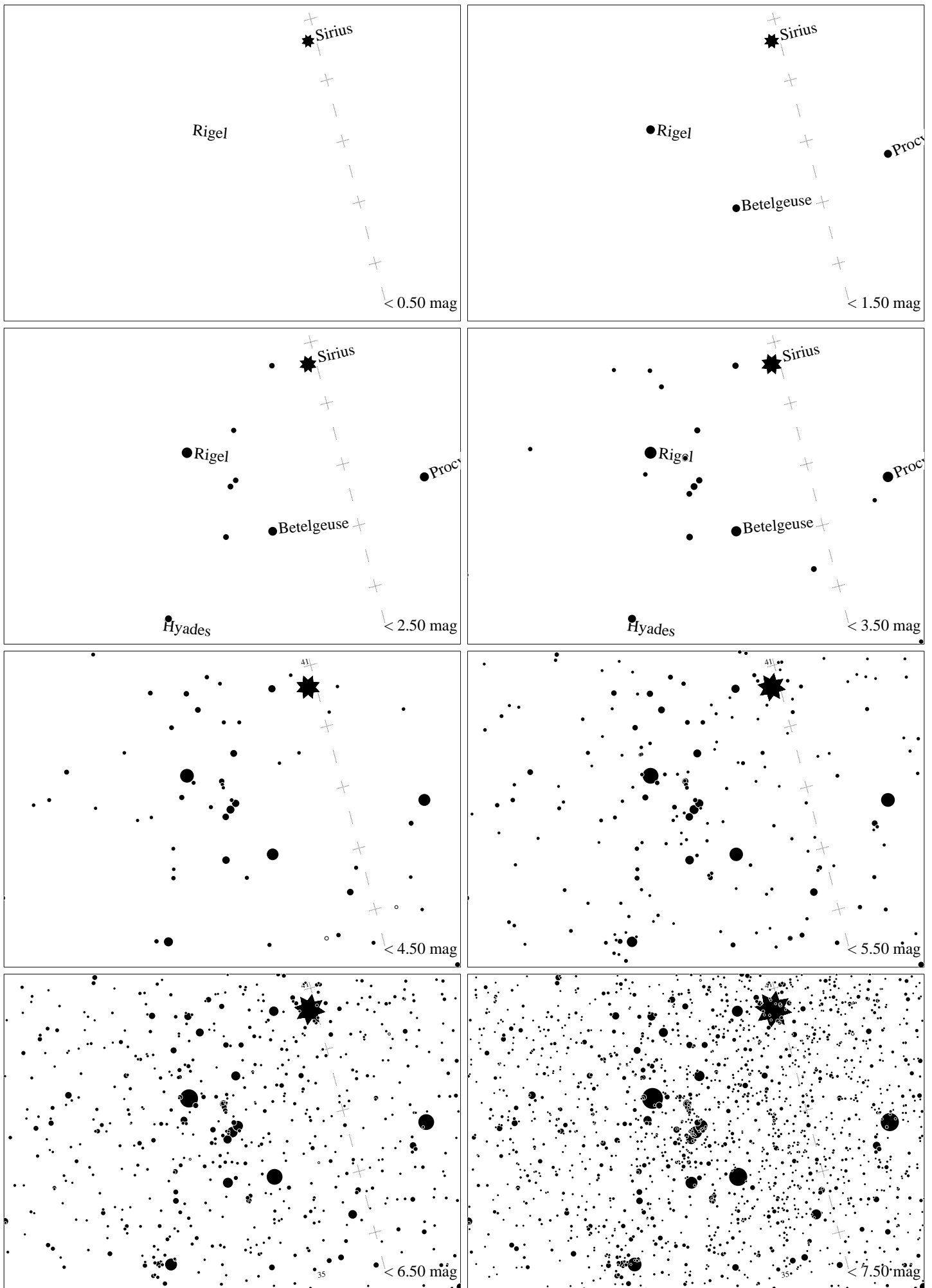
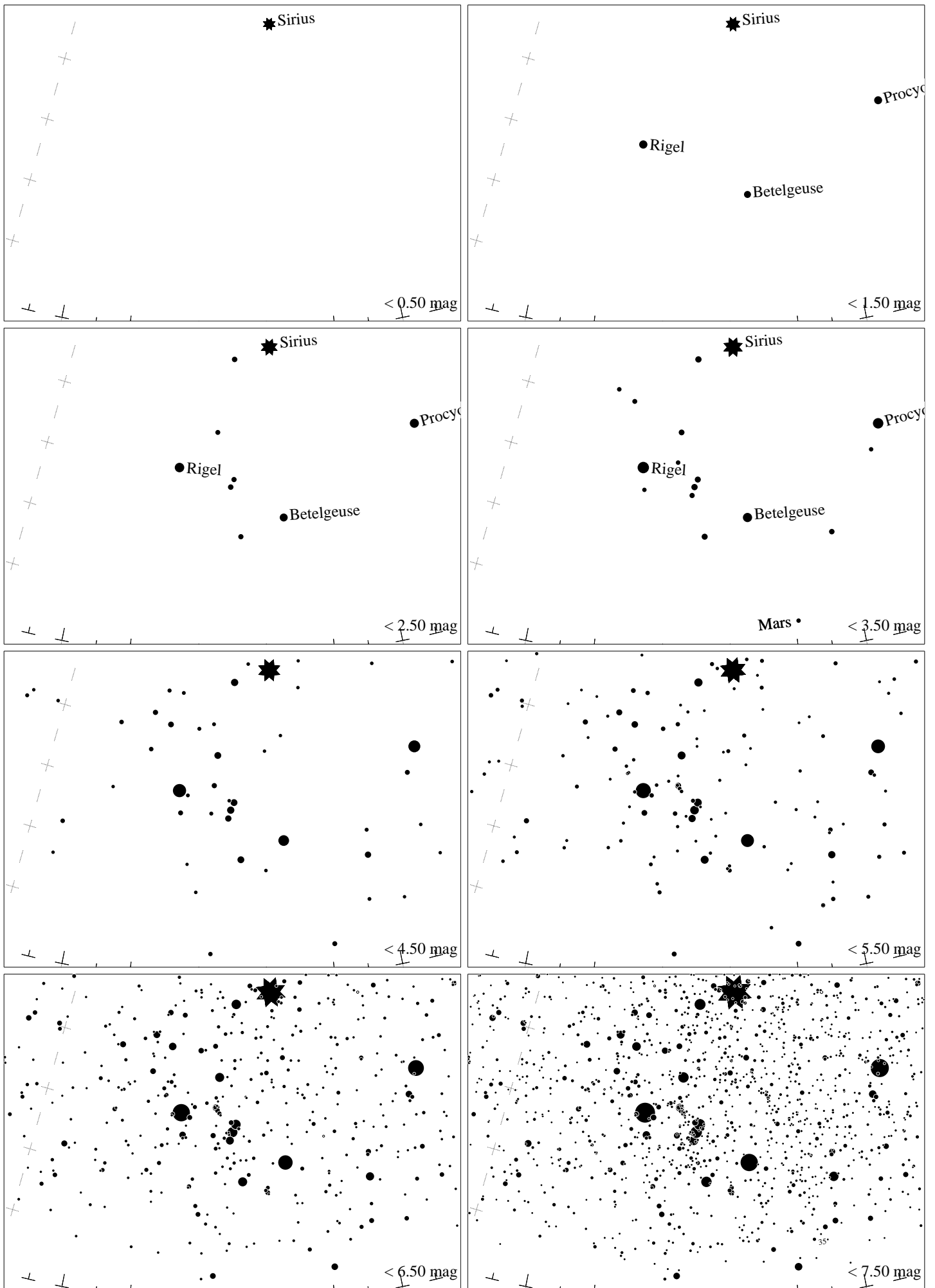


Maps for Globe at Night at latitude -50° , 2023-01-18, 22:30 local time (Sun at -19°), transparent air. Lines from N(E,S,W) to zenith shown (crosses each 10°). Orion's belt is 33° to the left from N, at 36° height. Star clusters M 41 and M35 marked when appropriate. Map vertical size is 50° . *Jan Hollan maps, CzechGlobe*



Maps for Globe at Night at latitude -50° , 2023-02-17, 21:00 local time (Sun at -15°), transparent air. Lines from N(E,S,W) to zenith shown (crosses each 10°). Orion's belt is 24° to the left from N, at 39° height. Star clusters M 41 and M35 marked when appropriate. Map vertical size is 50° . *Jan Hollan maps, CzechGlobe*



Maps for Globe at Night at latitude -50° , 2023-03-18, 21:00 local time (Sun at -25°), transparent air. Lines from N(E,S,W) to zenith shown (crosses each 10°). Orion's belt is 55° to the left from N, at 27° height. Star clusters M 41 and M35 marked when appropriate. Map vertical size is 50° . *Jan Hollan maps, CzechGlobe*