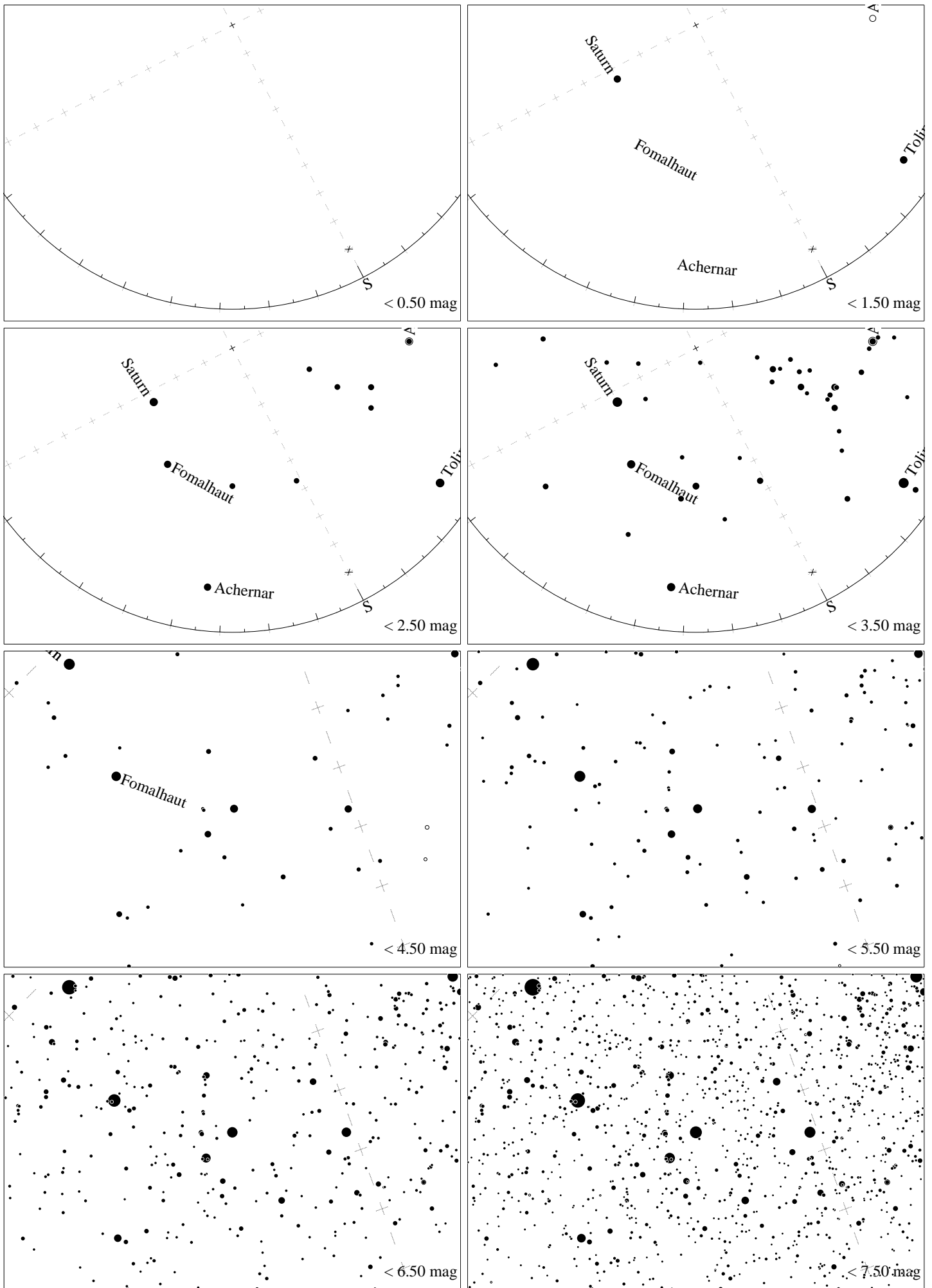
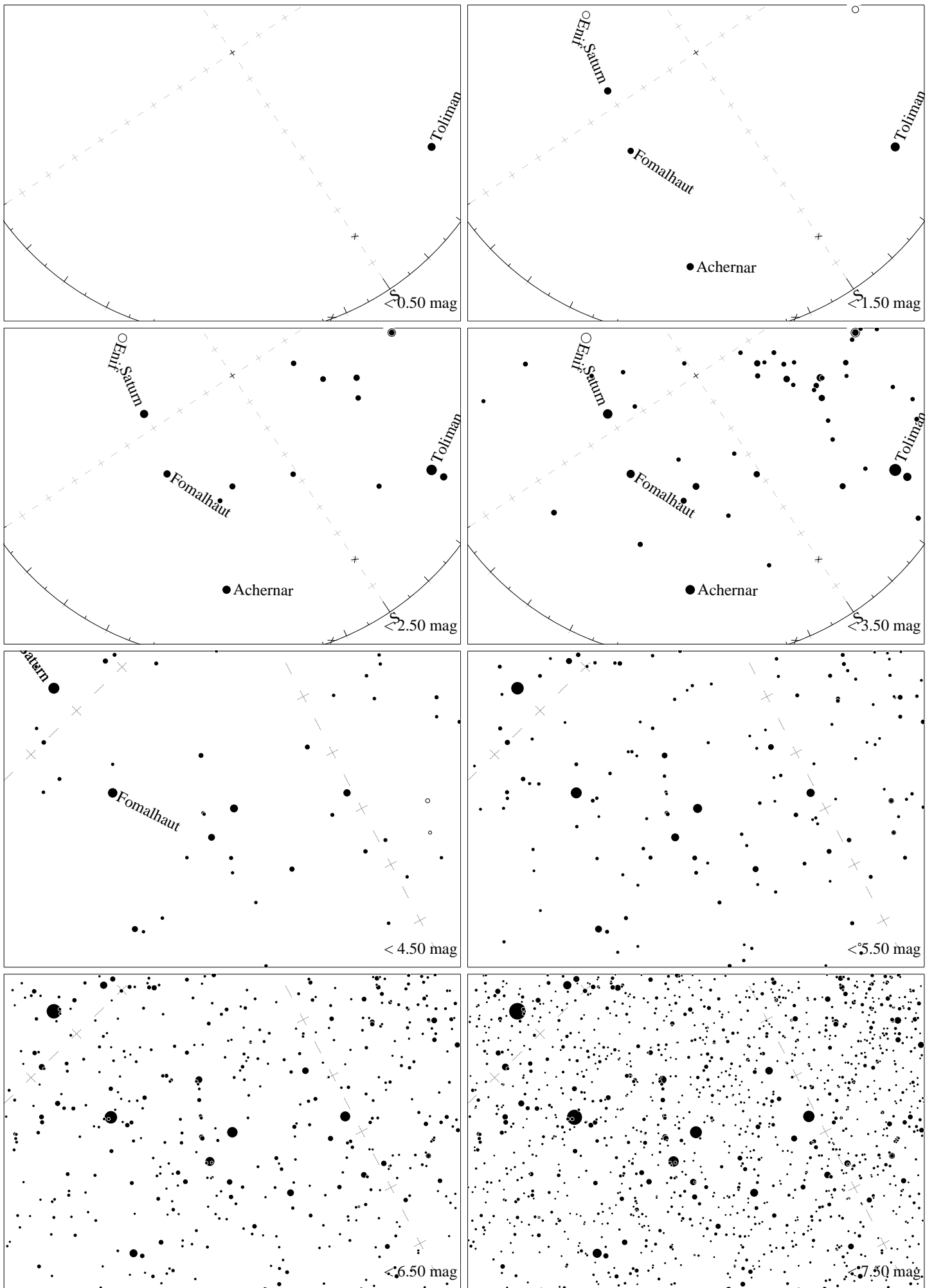


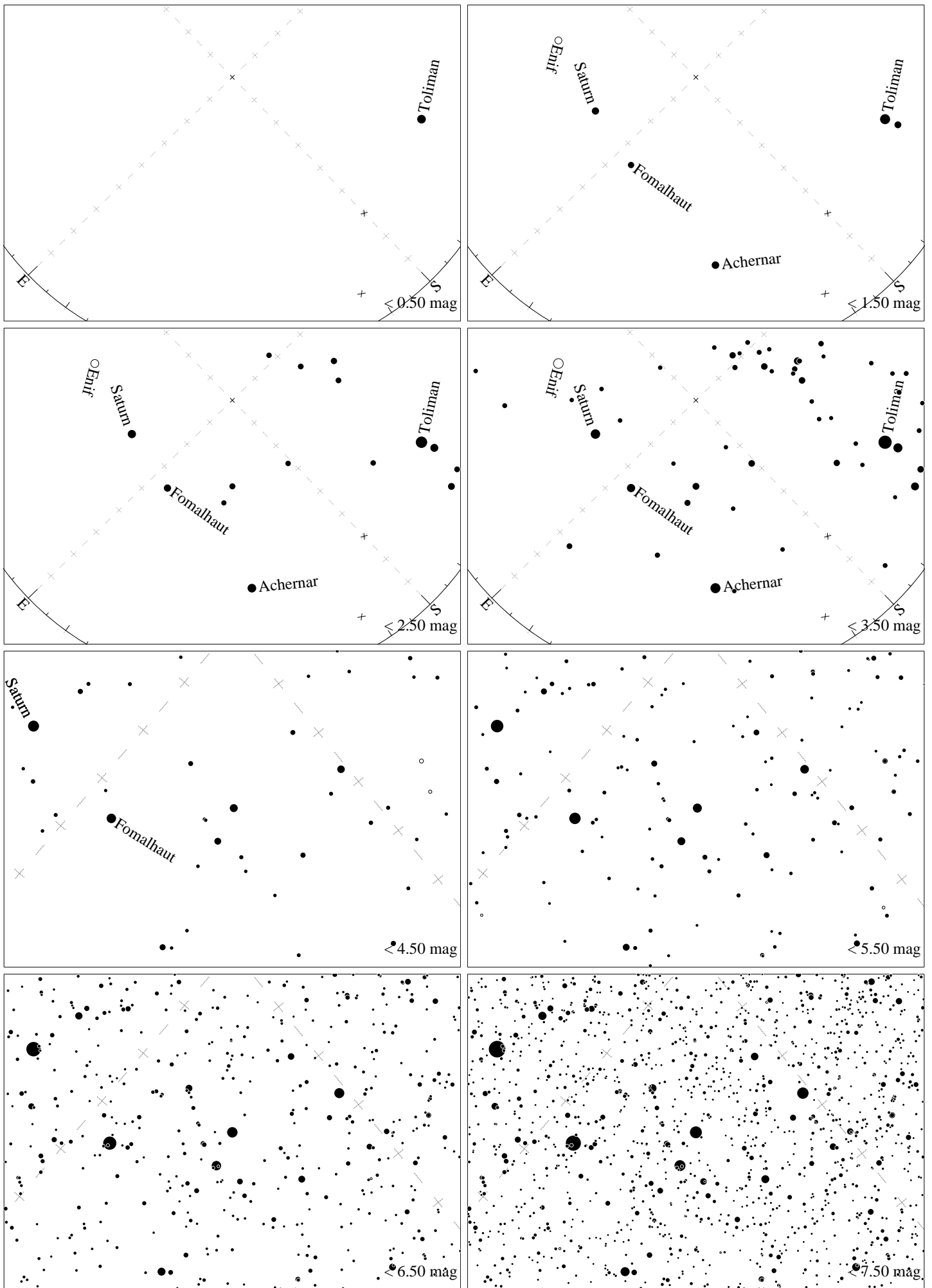
Maps for Globe at Night latitude 0° , 2023-09-10, 21:30 h local time (Sun at -46°), transparent air. Lines from N(E,S,W) to zenith shown (crosses each 10°). Centered on Alnair (α Gruis), which is 24° to the left from S, at 37° height. Detailed maps 50° vertically, the first four maps 100° . *Jan Hollan, CzechGlobe*



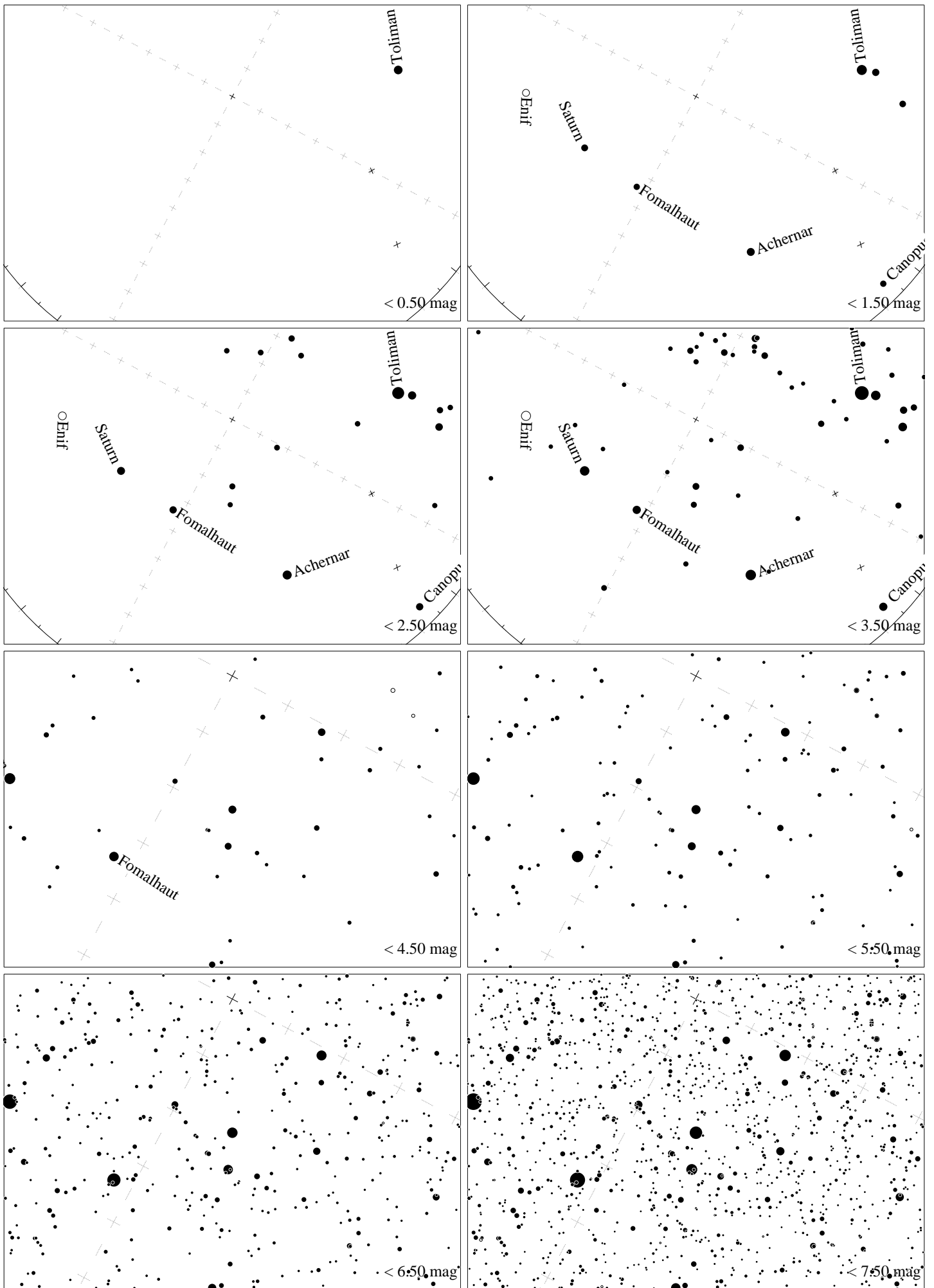
Maps for Globe at Night latitude -10° , 2023-09-10, 21:30 h local time (Sun at -46°), transparent air. Lines from N(E,S,W) to zenith shown (crosses each 10°). Centered on Alnair (α Gruis), which is 27° to the left from S, at 46° height. Detailed maps 50° vertically, the first four maps 100° . *Jan Hollan, CzechGlobe*



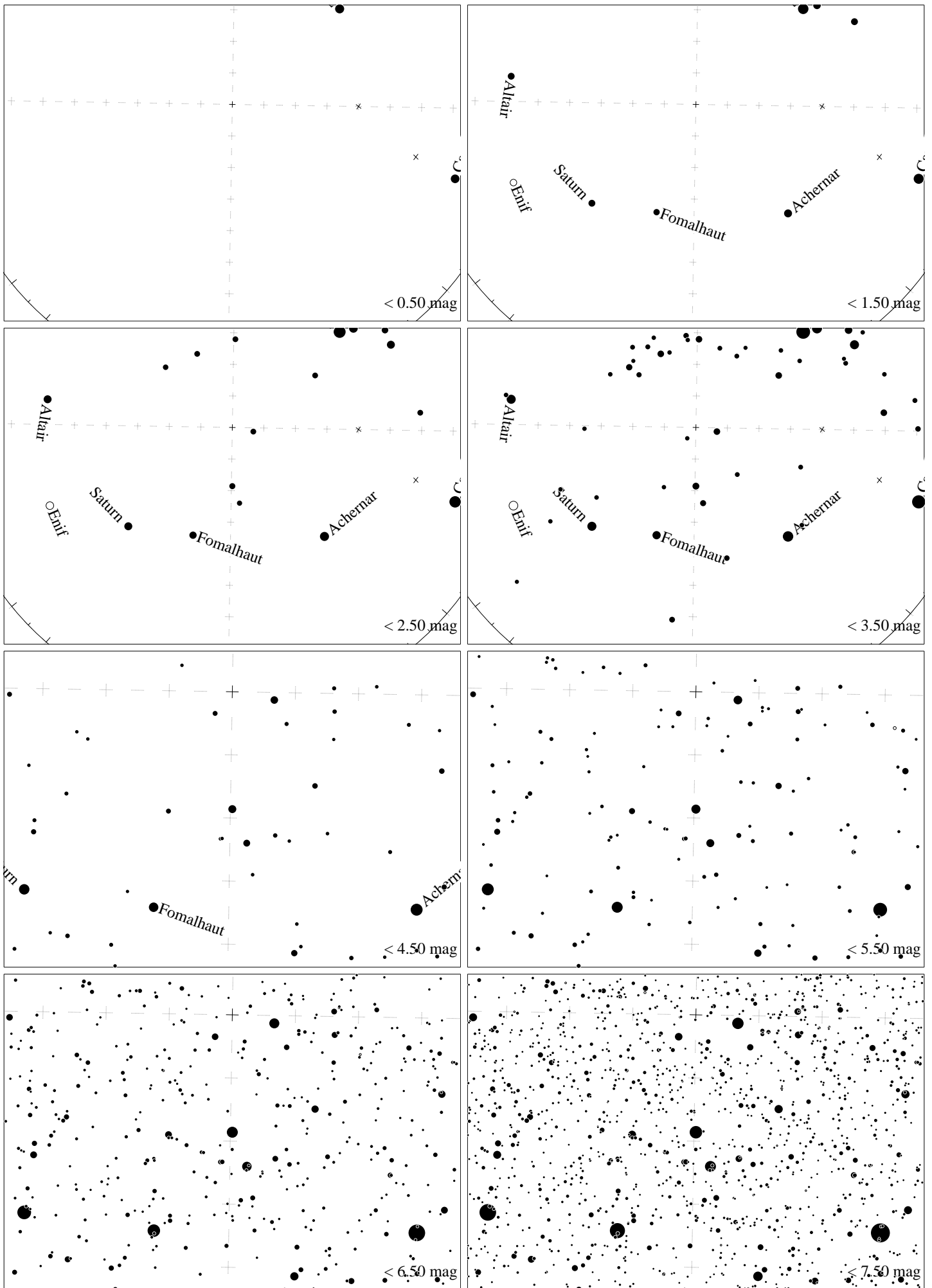
Maps for Globe at Night latitude -20° , 2023-09-10, 21:30 h local time (Sun at -44°), transparent air. Lines from N(E,S,W) to zenith shown (crosses each 10°). Centered on Alnair (α Gruis), which is 34° to the left from S, at 55° height. Detailed maps 50° vertically, the first four maps 100° . *Jan Hollan, CzechGlobe*



Maps for Globe at Night latitude -30° , 2023-09-10, 21:30 h local time (Sun at -41°), transparent air. Lines from N(E,S,W) to zenith shown (crosses each 10°). Centered on Alnair (α Gruis), which is 44° to the left from S, at 63° height. Detailed maps 50° vertically, the first four maps 100° . *Jan Hollan, CzechGlobe*



Maps for Globe at Night latitude -40° , 2023-09-10, 21:30 h local time (Sun at -37°), transparent air. Lines from N(E,S,W) to zenith shown (crosses each 10°). Centered on Alnair (α Gruis), which is 62° to the left from S, at 69° height. Detailed maps 50° vertically, the first four maps 100° . *Jan Hollan, CzechGlobe*



Maps for Globe at Night latitude -50° , 2023-09-10, 21:30 h local time (Sun at -32°), transparent air. Lines from N(E,S,W) to zenith shown (crosses each 10°). Centered on Alnair (α Gruis), which is 89° to the left from S, at 71° height. Detailed maps 50° vertically, the first four maps 100° . *Jan Hollan, CzechGlobe*