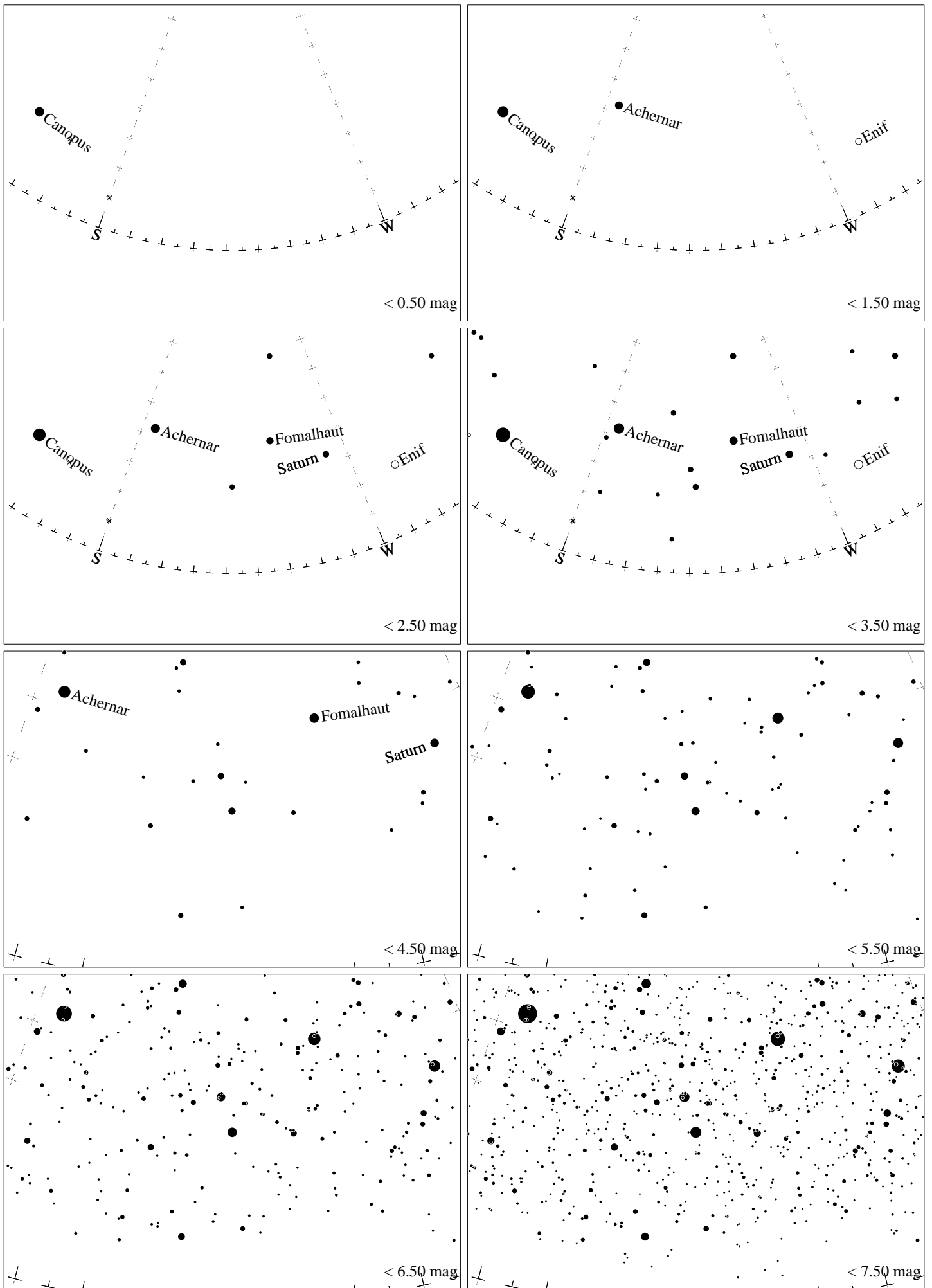
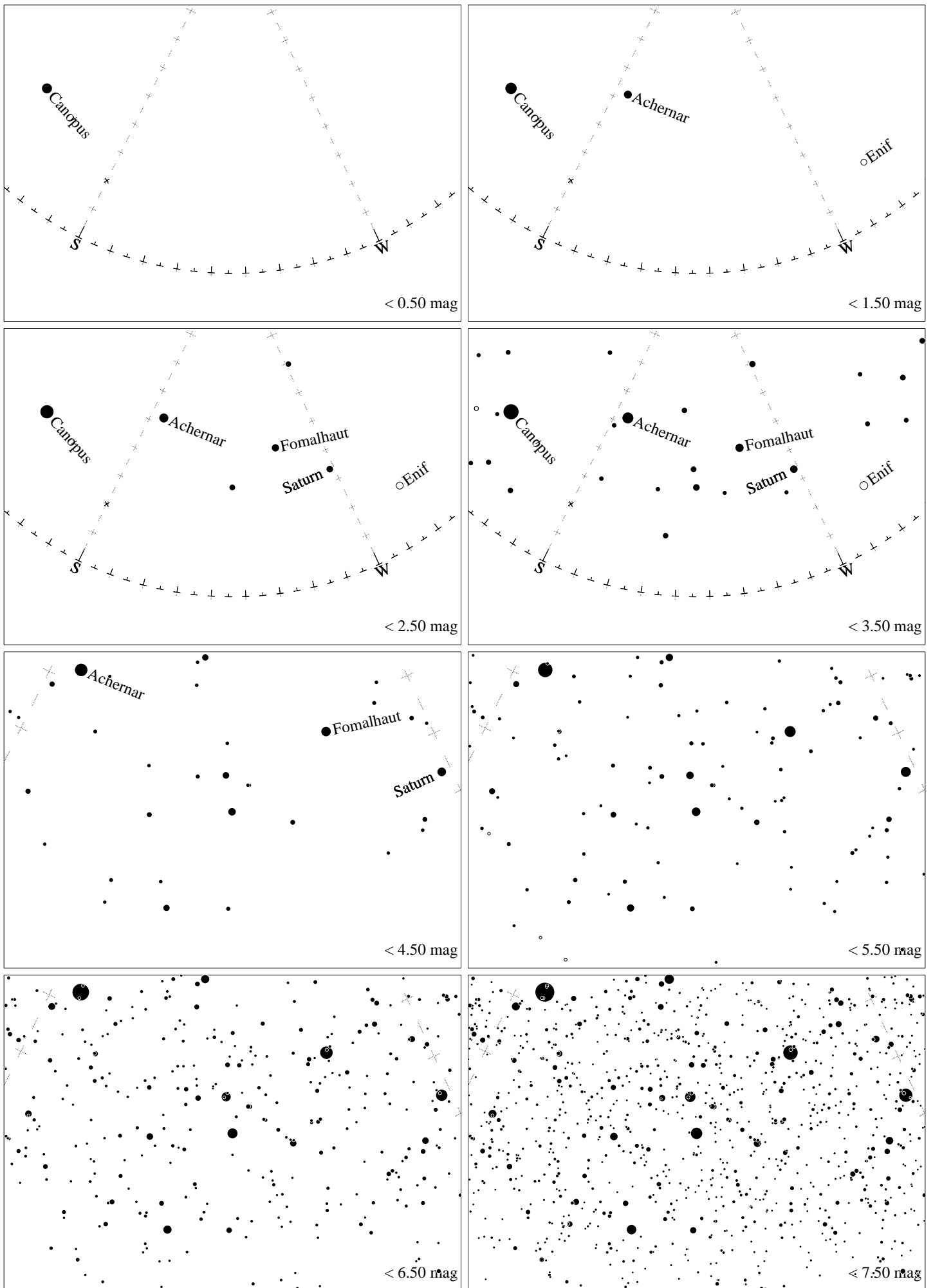


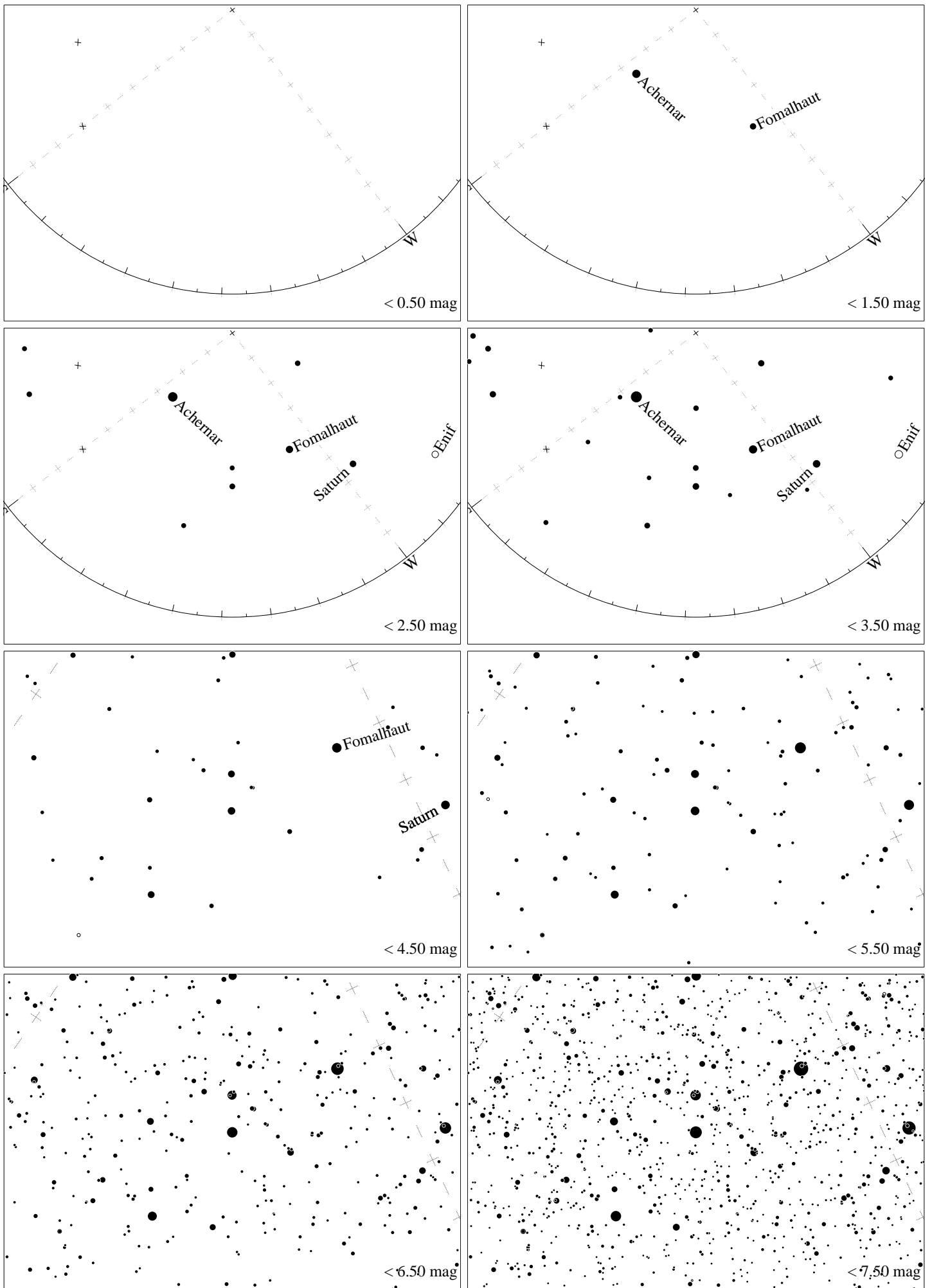
Maps for Globe at Night latitude 0° , 2023-12-08, 21 h local time (Sun at -42°), transparent air. Lines from N(E,S,W) to zenith shown (crosses each 10°). Centered on Alnair (α Gruis), which is 39° to the right from S, at 20° height. Detailed maps 50° vertically, the first four maps 100° . Jan Hollan, CzechGlobe



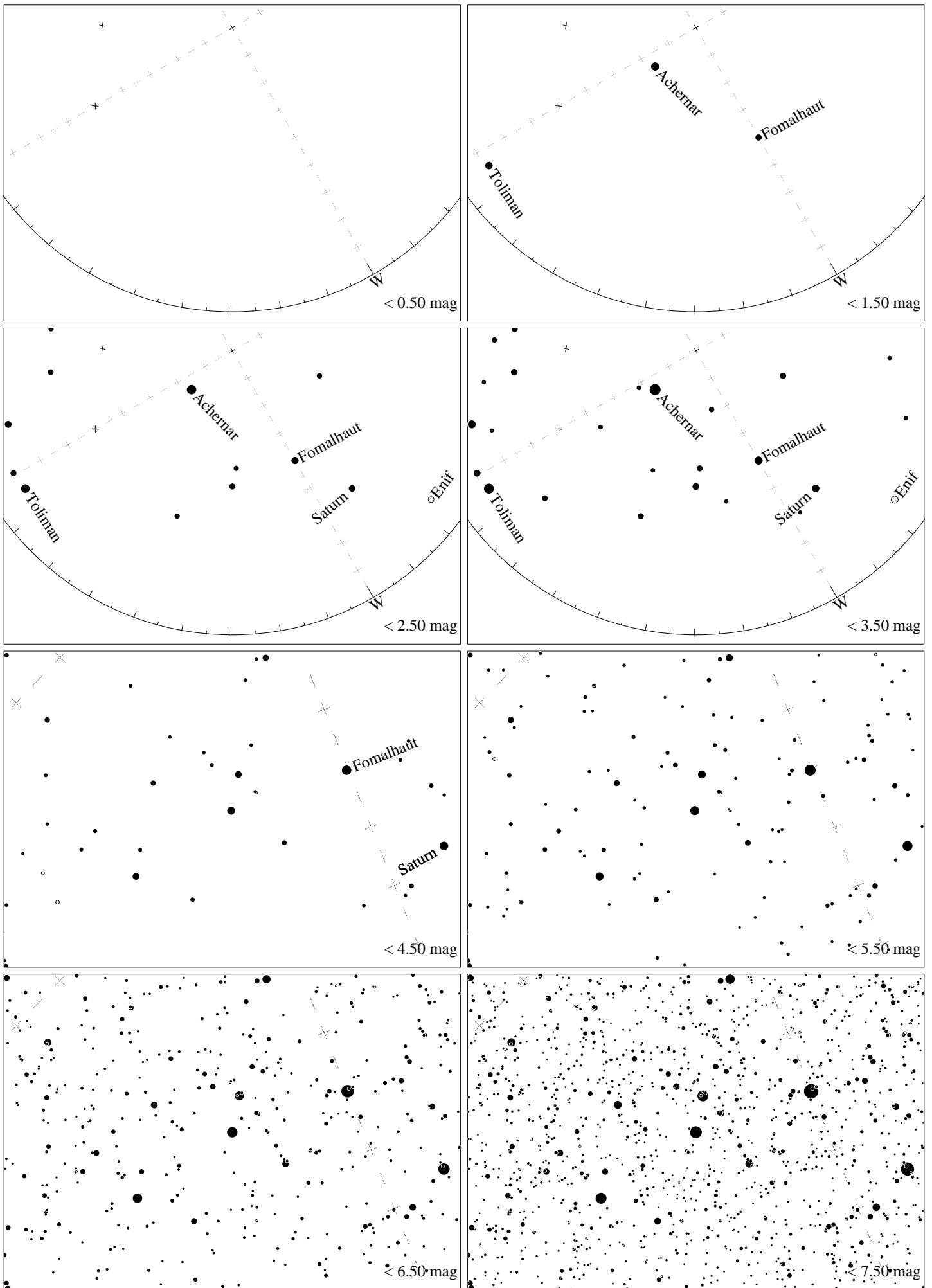
Maps for Globe at Night latitude -10° , 2023-12-08, 21 h local time (Sun at -37°), transparent air. Lines from N(E,S,W) to zenith shown (crosses each 10°). Centered on Alnair (α Gruis), which is 42° to the right from S, at 28° height. Detailed maps 50° vertically, the first four maps 100° . *Jan Hollan, CzechGlobe*



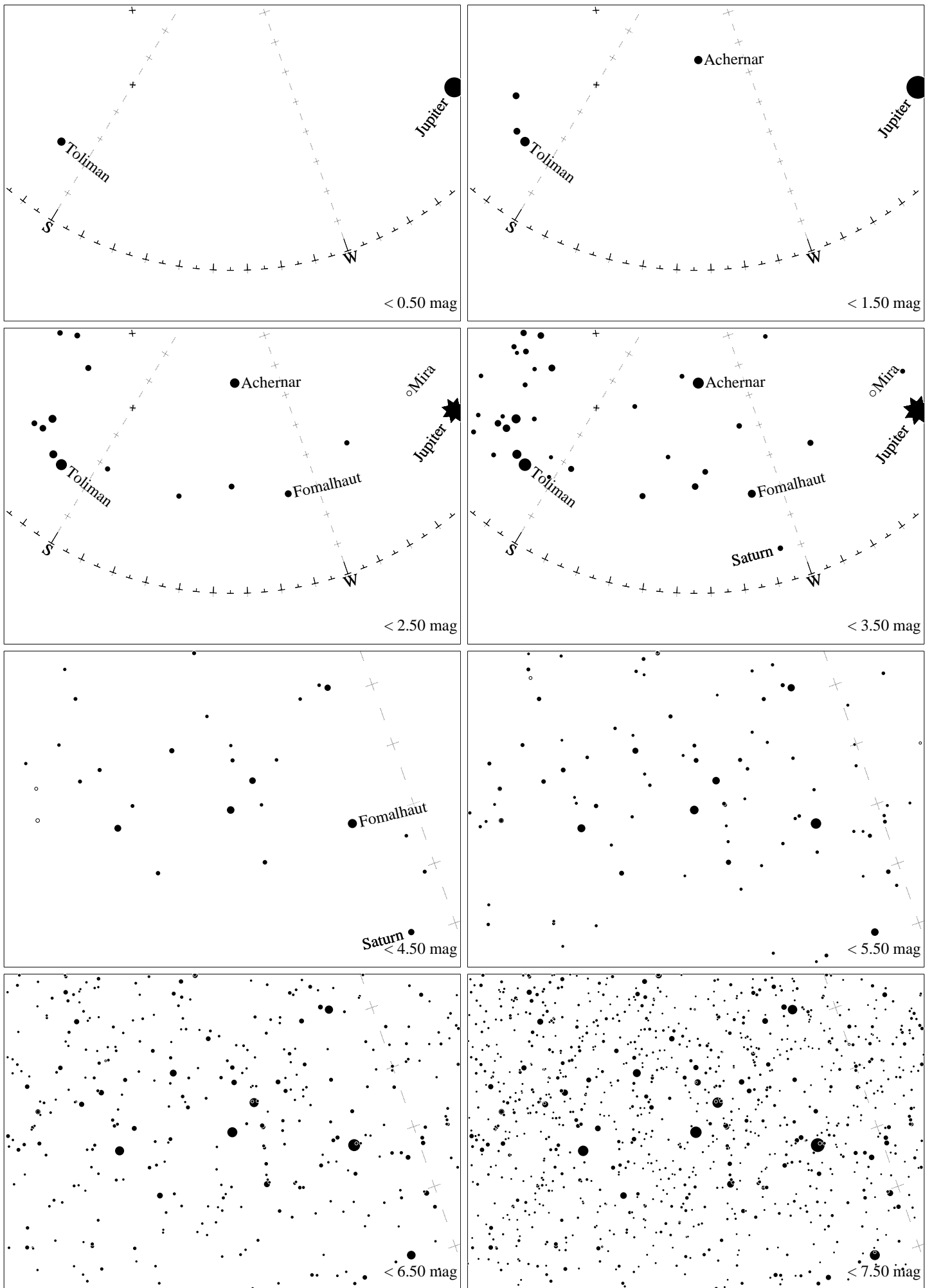
Maps for Globe at Night latitude -20° , 2023-12-08, 21 h local time (Sun at -30°), transparent air. Lines from N(E,S,W) to zenith shown (crosses each 10°). Centered on Alnair (α Gruis), which is 46° to the right from S, at 35° height. Detailed maps 50° vertically, the first four maps 100° . *Jan Hollan, CzechGlobe*



Maps for Globe at Night latitude -30° , 2023-12-08, 21 h local time (Sun at -23°), transparent air. Lines from N(E,S,W) to zenith shown (crosses each 10°). Centered on Alnair (α Gruis), which is 52° to the right from S, at 41° height. Detailed maps 50° vertically, the first four maps 100° . *Jan Hollan, CzechGlobe*



Maps for Globe at Night latitude -40° , 2023-12-08, 21 h local time (Sun at -16°), transparent air. Lines from N(E,S,W) to zenith shown (crosses each 10°). Centered on Alnair (α Gruis), which is 60° to the right from S, at 47° height. Detailed maps 50° vertically, the first four maps 100° . *Jan Hollan, CzechGlobe*



Maps for Globe at Night latitude -50° , 2023-12-08, 23 h local time (Sun at -16°), transparent air. Lines from N(E,S,W) to zenith shown (crosses each 10°). Centered on Alnair (α Gruis), which is 56° to the right from S, at 34° height. Detailed maps 50° vertically, the first four maps 100° . *Jan Hollan, CzechGlobe*