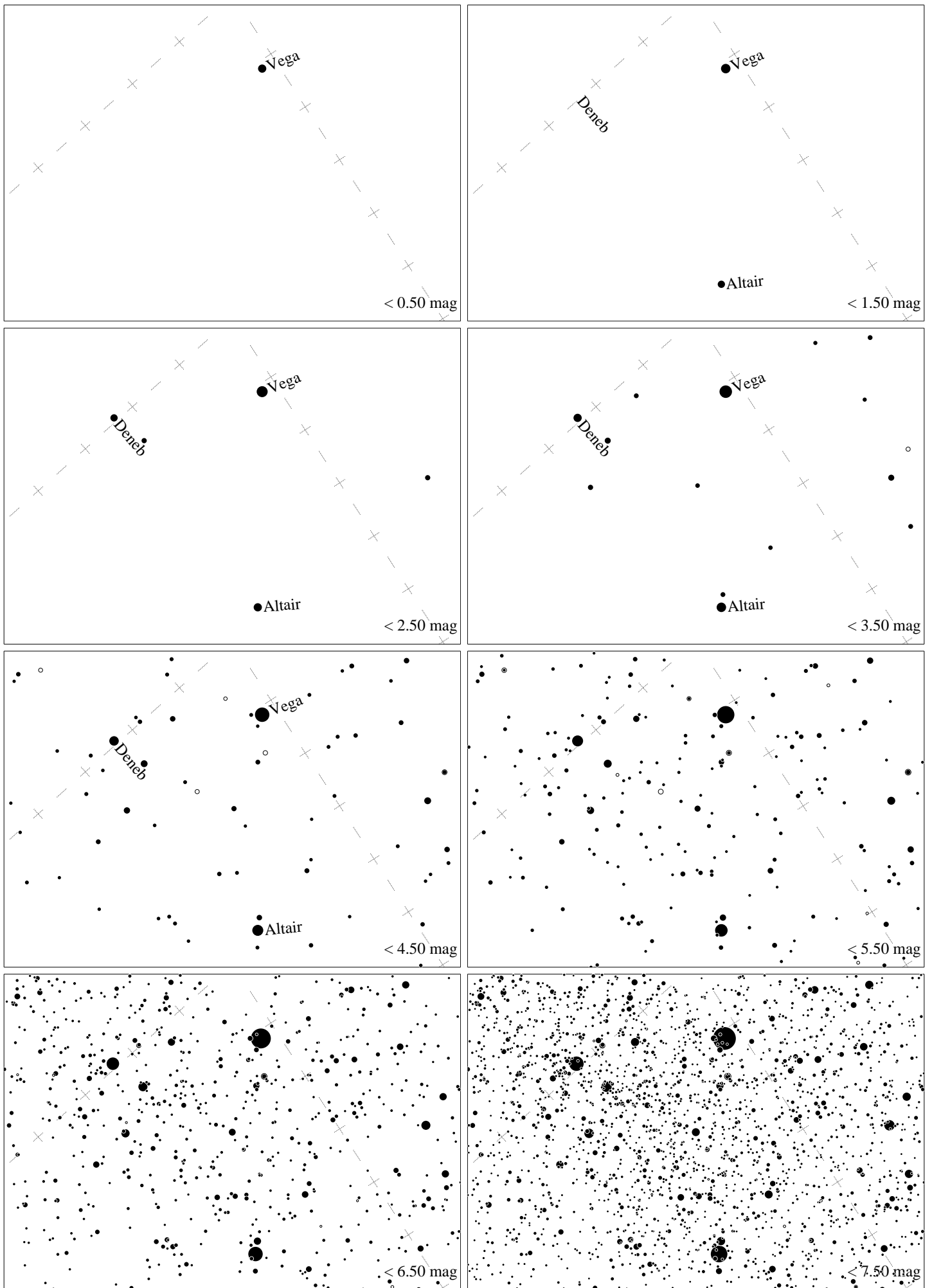
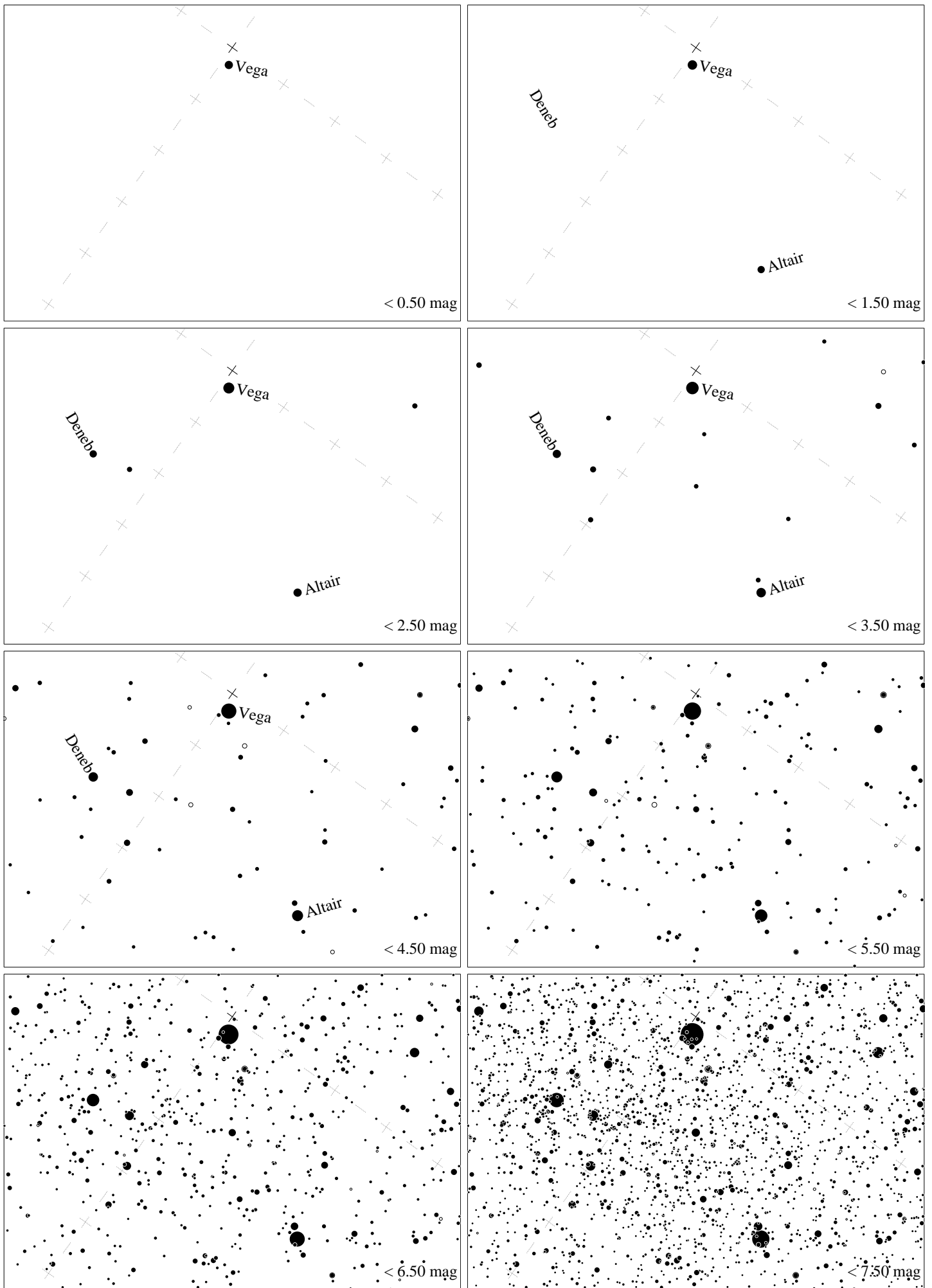


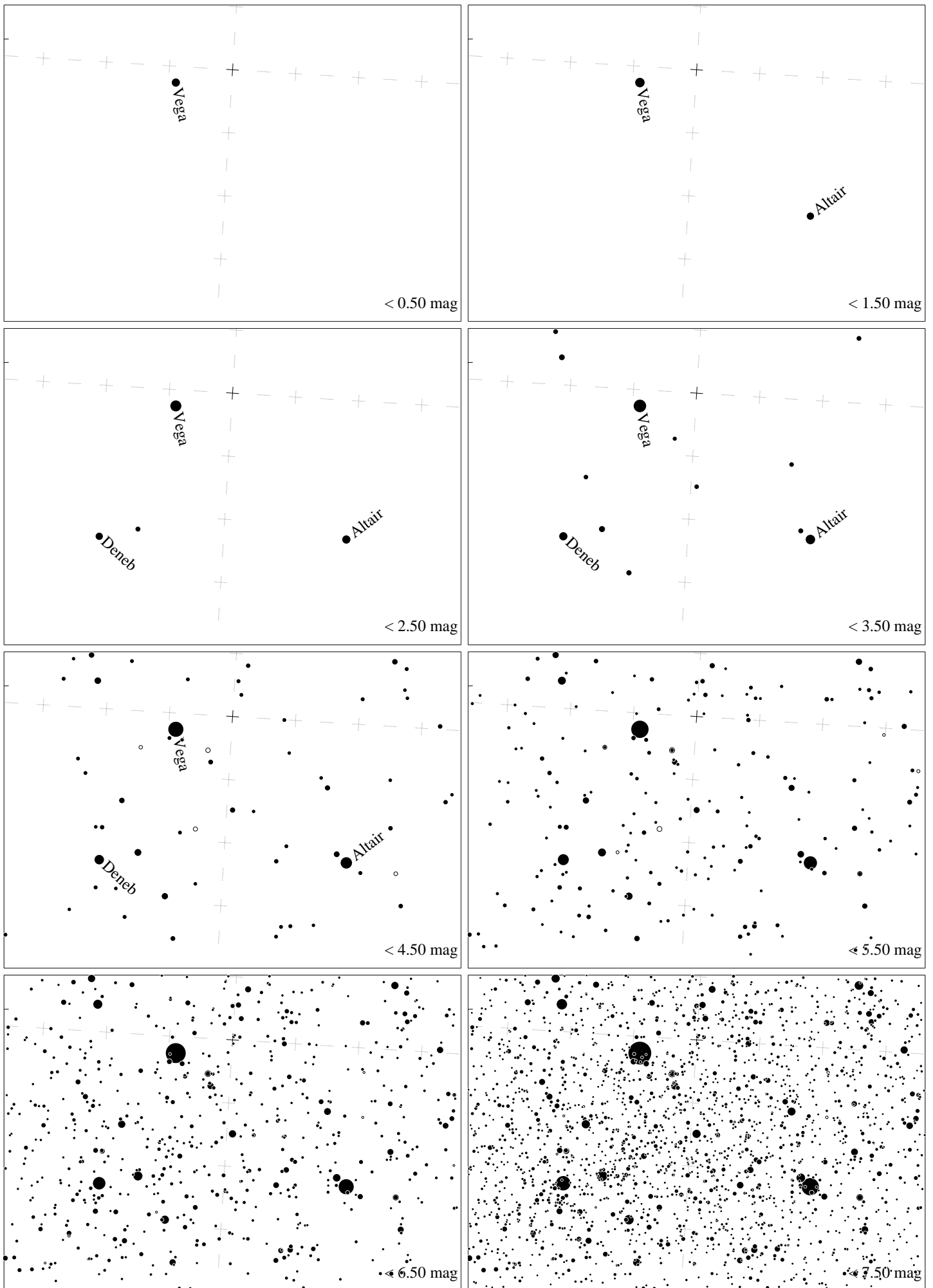
Maps for Globe at Night latitude 60° , 2023-08-12, 21 h local time (Sun at -6°), transparent air. Lines from N(E,S,W) to zenith shown (crosses each 10°). Centered on Albireo (β Cygni), 27° to the left from S, at 56° height, near the centre of Summer Triangle. Map vertical size is 50° . *Jan Hollan, CzechGlobe*



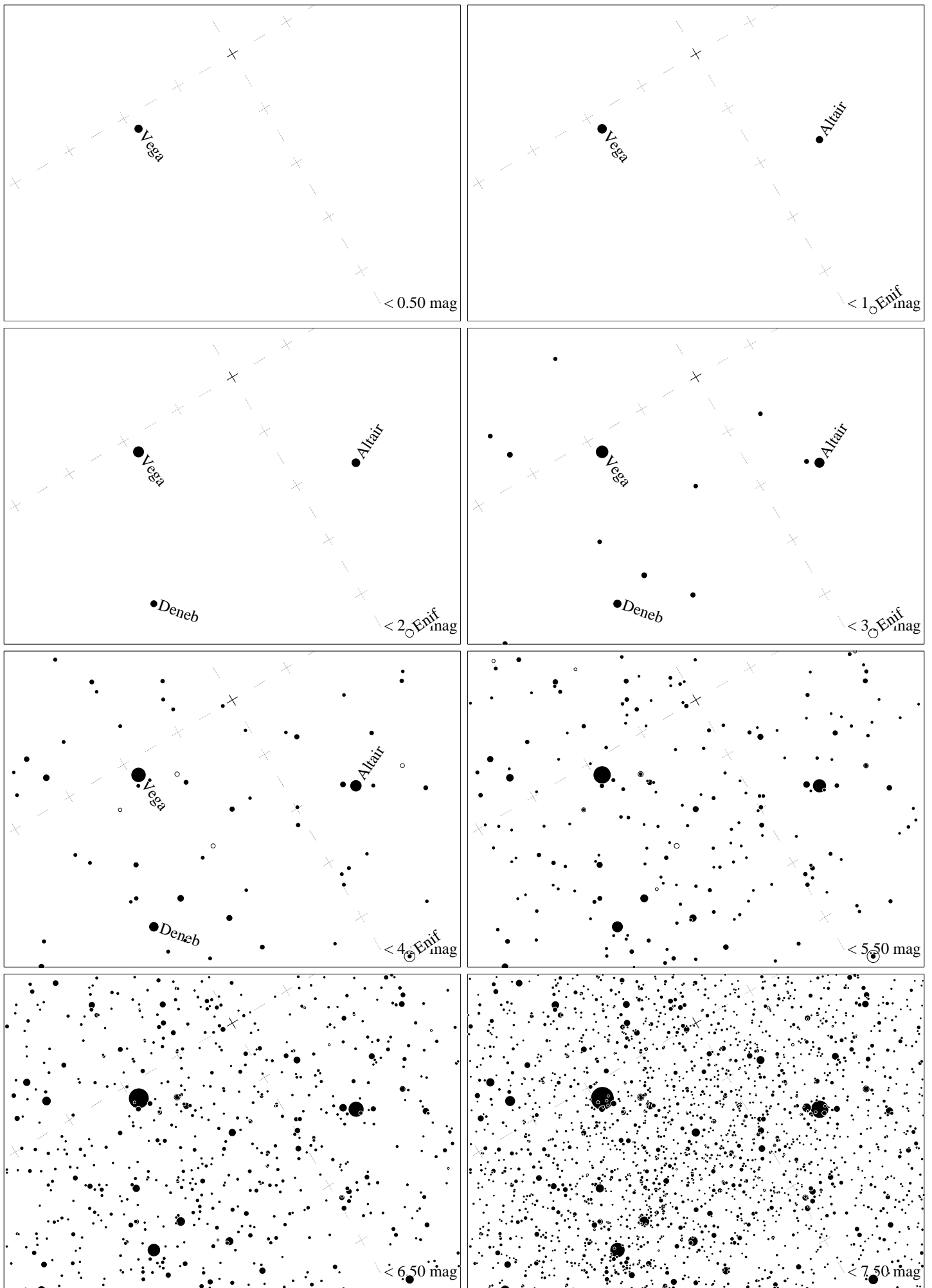
Maps for Globe at Night latitude 50° , 2023-08-12, 21 h local time (Sun at -14°), transparent air. Lines from N(E,S,W) to zenith shown (crosses each 10°). Centered on Albireo (β Cygni), 37° to the left from S, at 65° height, near the centre of Summer Triangle. Map vertical size is 50° . *Jan Hollan, CzechGlobe*



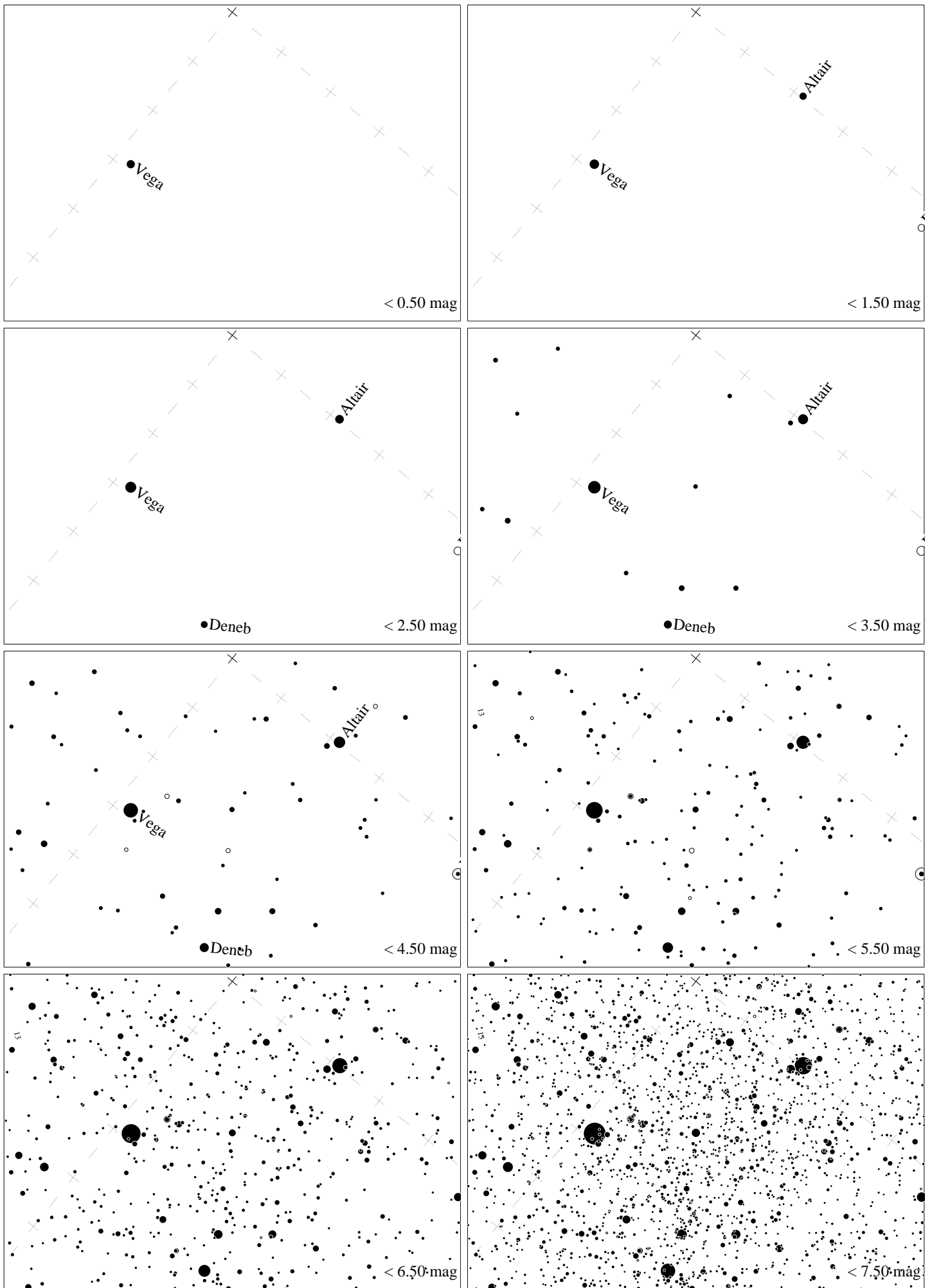
Maps for Globe at Night latitude 40° , 2023-08-12, 21 h local time (Sun at -20°), transparent air. Lines from N(E,S,W) to zenith shown (crosses each 10°). Centered on Albireo (β Cygni), 54° to the left from S, at 72° height, near the centre of Summer Triangle. Map vertical size is 50° . *Jan Hollan, CzechGlobe*



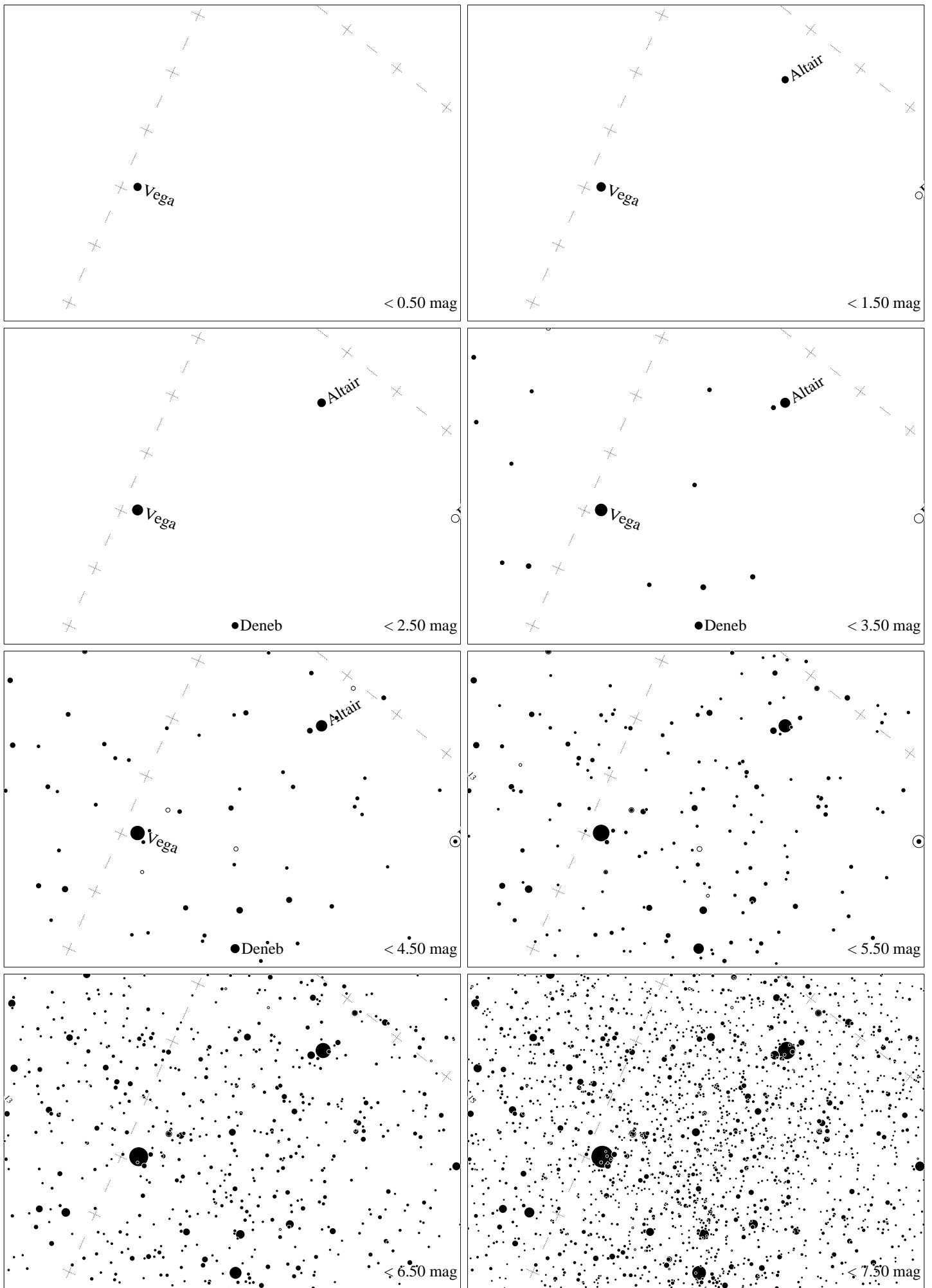
Maps for Globe at Night latitude 30° , 2023-08-12, 21 h local time (Sun at -27°), transparent air. Lines from N(E,S,W) to zenith shown (crosses each 10°). Centered on Albireo (β Cygni), 86° to the left from S, at 75° height, near the centre of Summer Triangle. Map vertical size is 50° . *Jan Hollan, CzechGlobe*



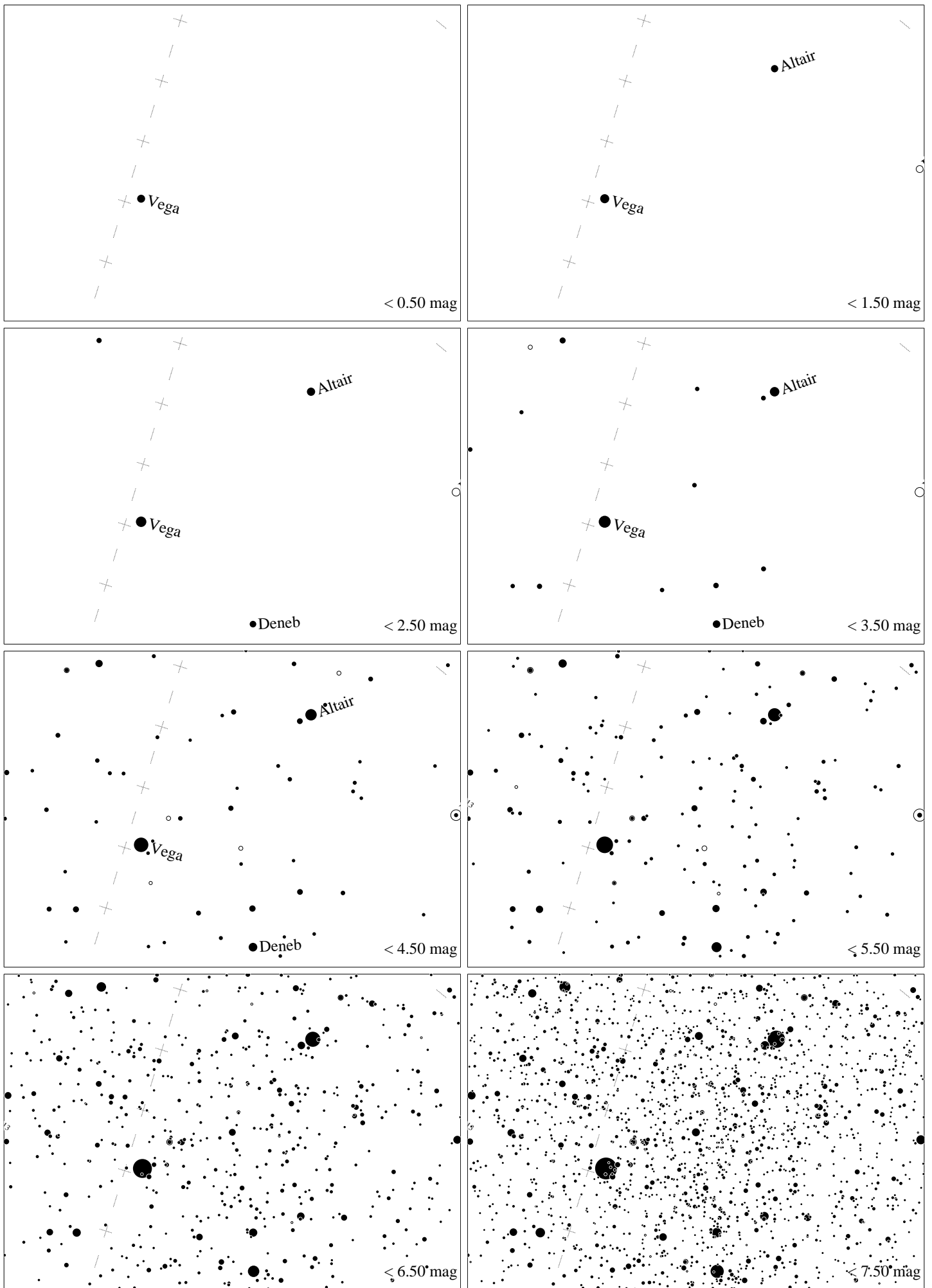
Maps for Globe at Night latitude 20° , 2023-08-12, 21 h local time (Sun at -33°), transparent air. Lines from N(E,S,W) to zenith shown (crosses each 10°). Centered on Albireo (β Cygni), 59° to the right from N, at 73° height, near the centre of Summer Triangle. Map vertical size is 50° . *Jan Hollan, CzechGlobe*



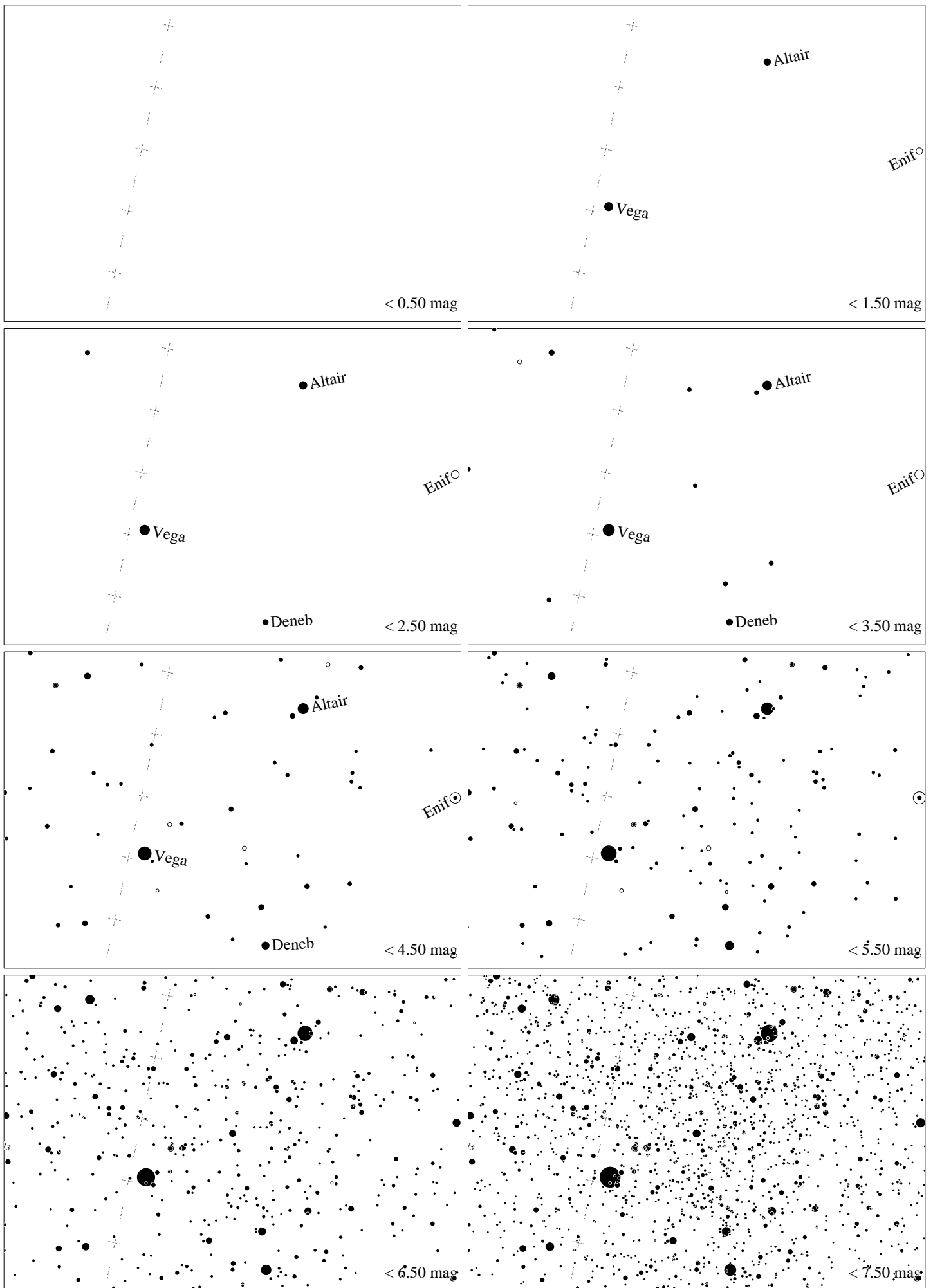
Maps for Globe at Night latitude 10° , 2023-08-12, 21 h local time (Sun at -38°), transparent air. Lines from N(E,S,W) to zenith shown (crosses each 10°). Centered on Albireo (β Cygni), 39° to the right from N, at 66° height, near the centre of Summer Triangle. Map vertical size is 50° . *Jan Hollan, CzechGlobe*



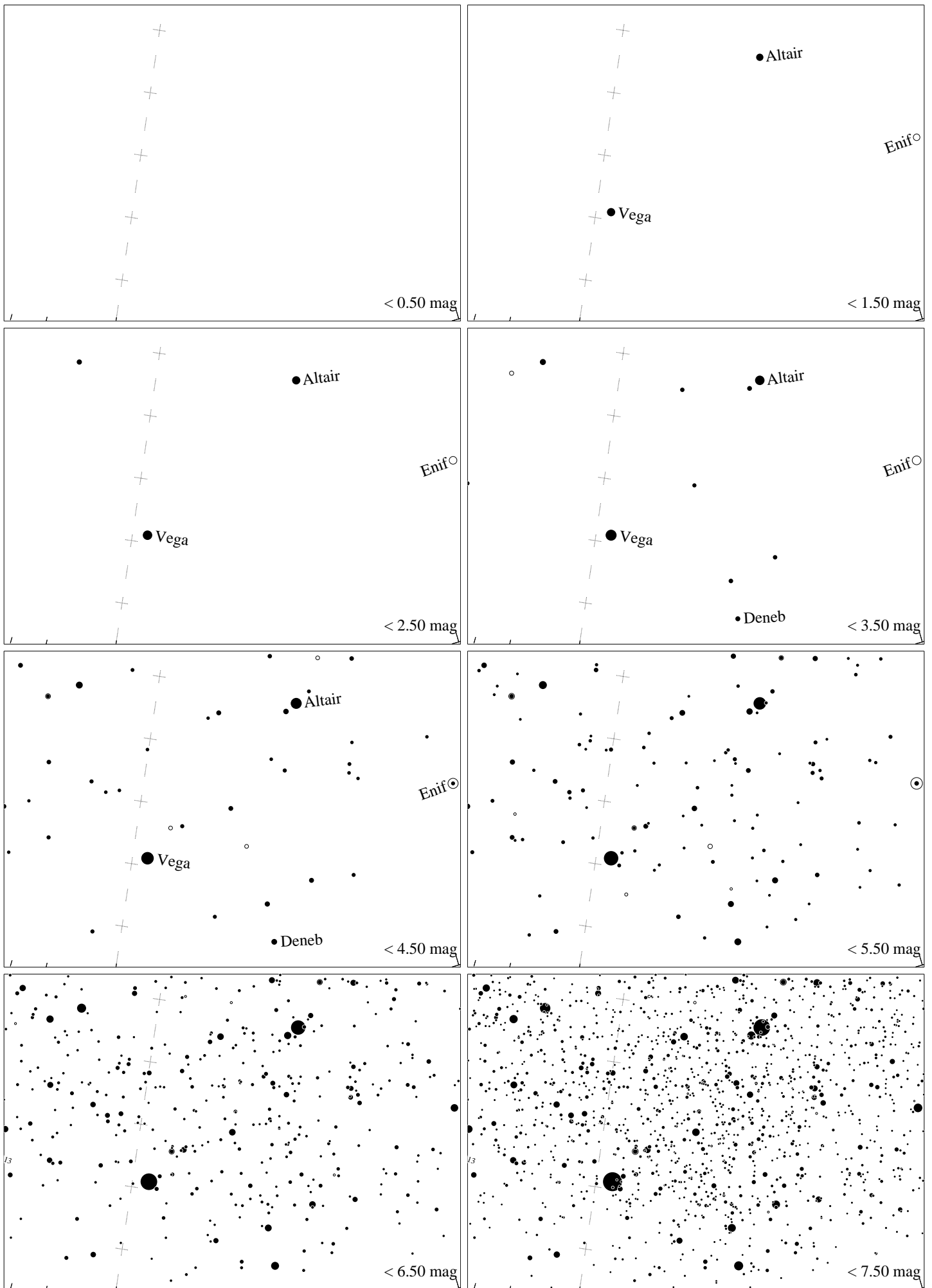
Maps for Globe at Night latitude 0° , 2023-08-12, 21 h local time (Sun at -42°), transparent air. Lines from N(E,S,W) to zenith shown (crosses each 10°). Centered on Albireo (β Cygni), 29° to the right from N, at 58° height, near the centre of Summer Triangle. Map vertical size is 50° . *Jan Hollan, CzechGlobe*



Maps for Globe at Night latitude -10° , 2023-08-12, 21 h local time (Sun at -45°), transparent air. Lines from N(E,S,W) to zenith shown (crosses each 10°). Centered on Albireo (β Cygni), 23° to the right from N, at 49° height, near the centre of Summer Triangle. Map vertical size is 50° . *Jan Hollan, CzechGlobe*



Maps for Globe at Night latitude -20° , 2023-08-12, 21 h local time (Sun at -46°), transparent air. Lines from N(E,S,W) to zenith shown (crosses each 10°). Centered on Albireo (β Cygni), 19° to the right from N, at 39° height, near the centre of Summer Triangle. Map vertical size is 50° . *Jan Hollan, CzechGlobe*



Maps for Globe at Night latitude -30° , 2023-08-12, 21 h local time (Sun at -45°), transparent air. Lines from N(E,S,W) to zenith shown (crosses each 10°). Centered on Albireo (β Cygni), 17° to the right from N, at 30° height, near the centre of Summer Triangle. Map vertical size is 50° . *Jan Hollan, CzechGlobe*