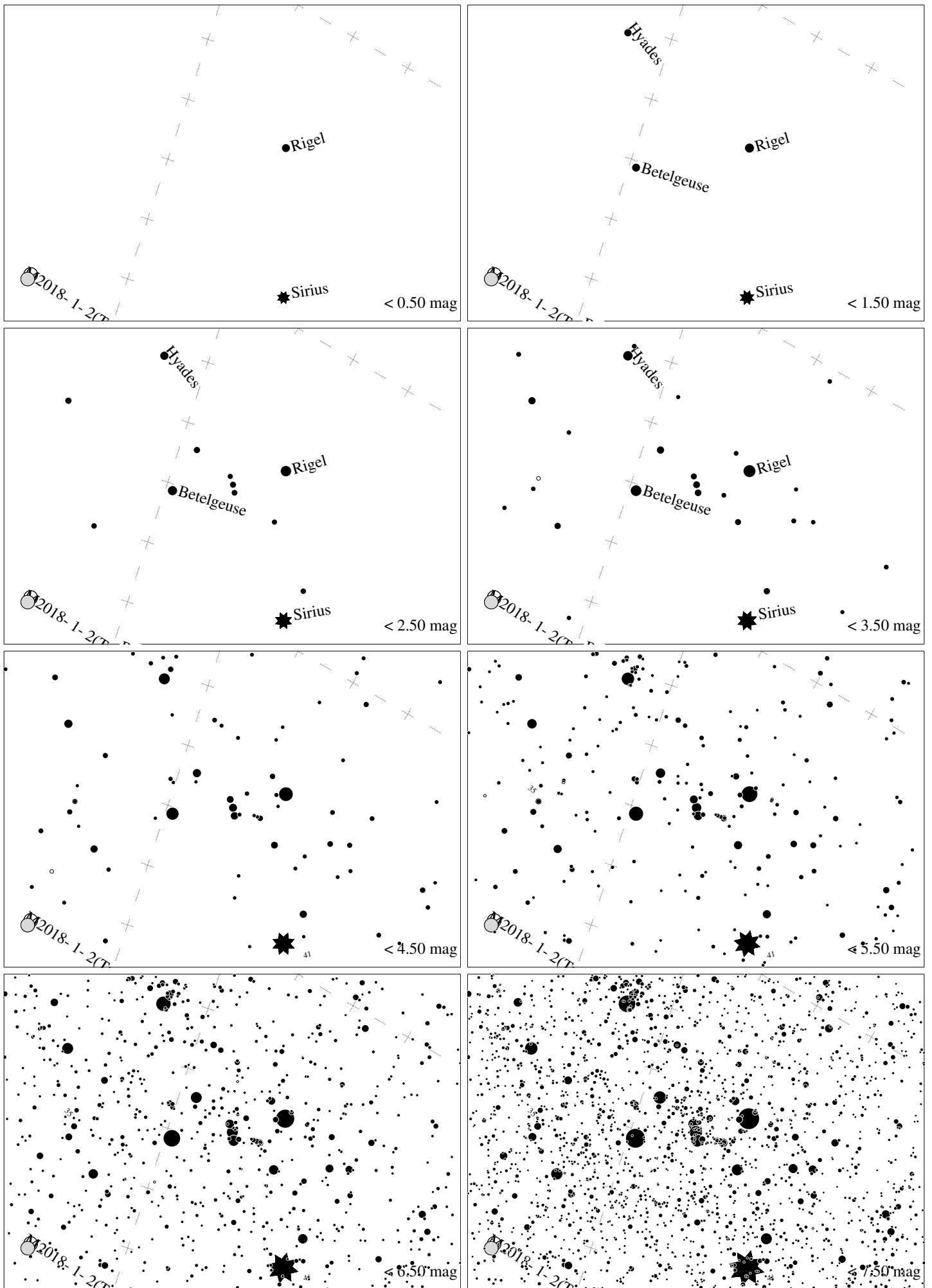
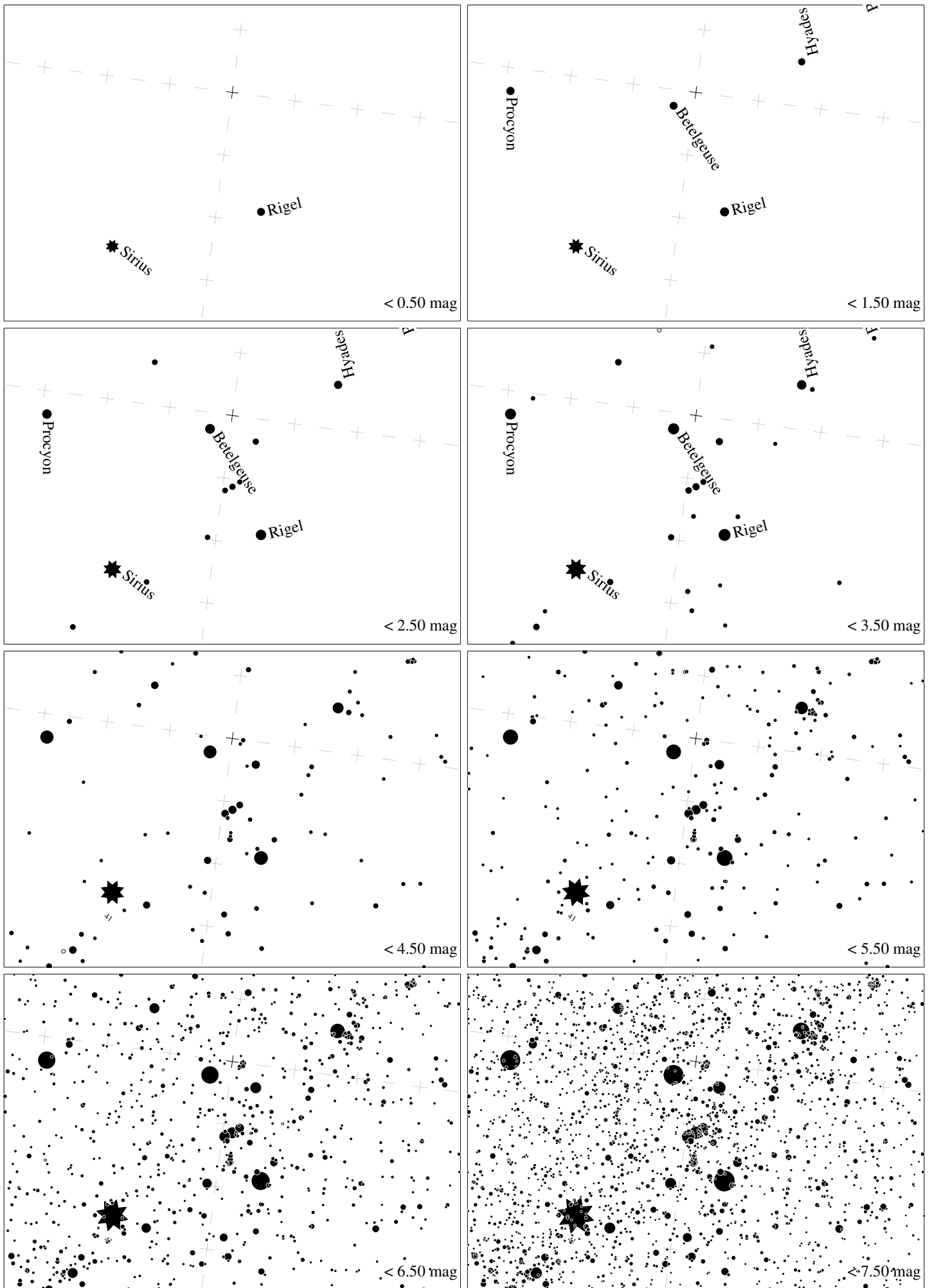


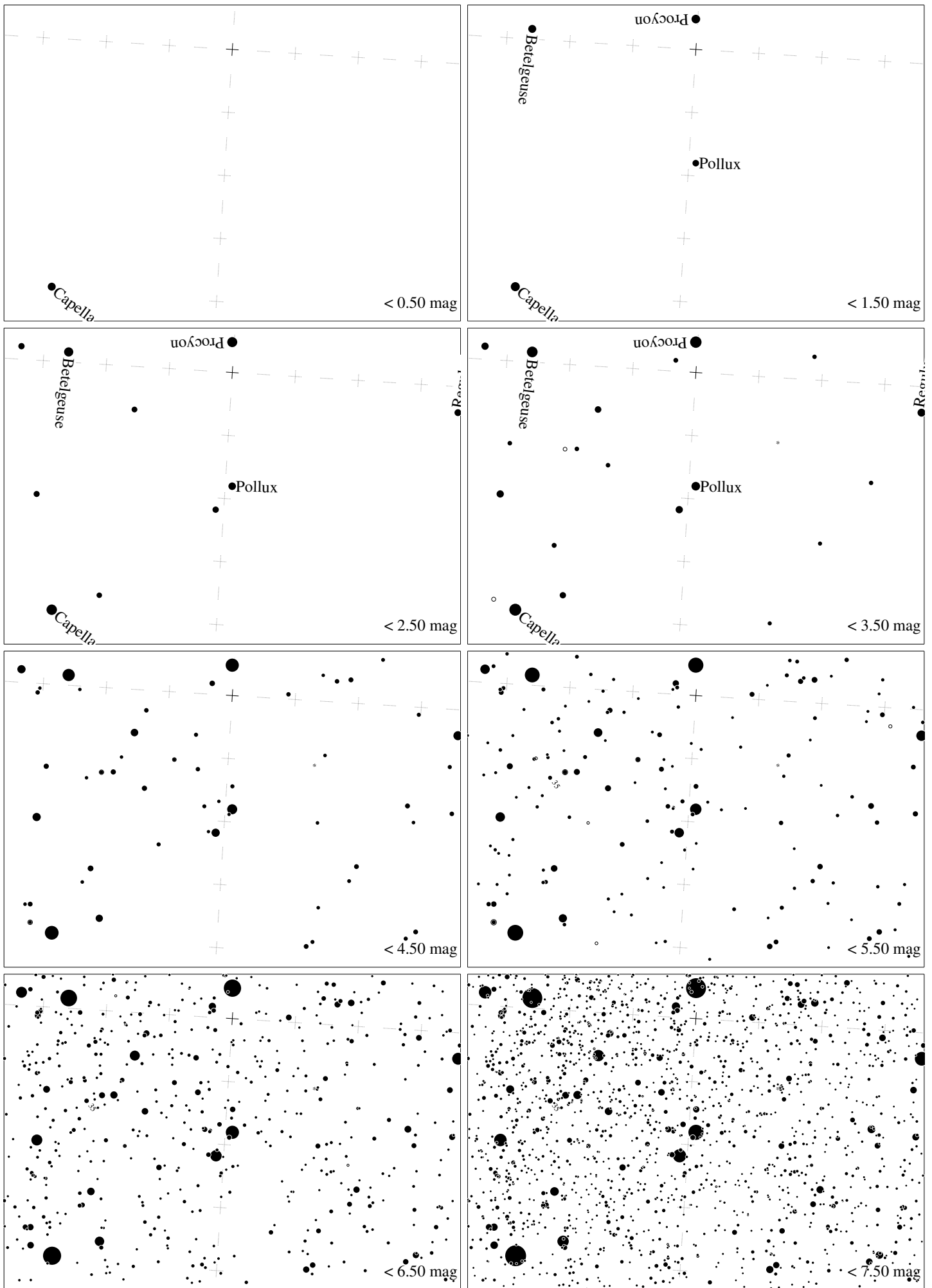
Maps for Globe at Night at latitude 10° , 2019-01-02, 21 h local time (Sun at -44°), transparent air. Lines from N(E,S,W) to zenith shown (crosses each 10°). The brightest fixed star Sirius is 59° to the left from S, at 39° height. Star cluster M 41 marked when appropriate. Map vertical size is 50° . *Jan Hollan, CzechGlobe*



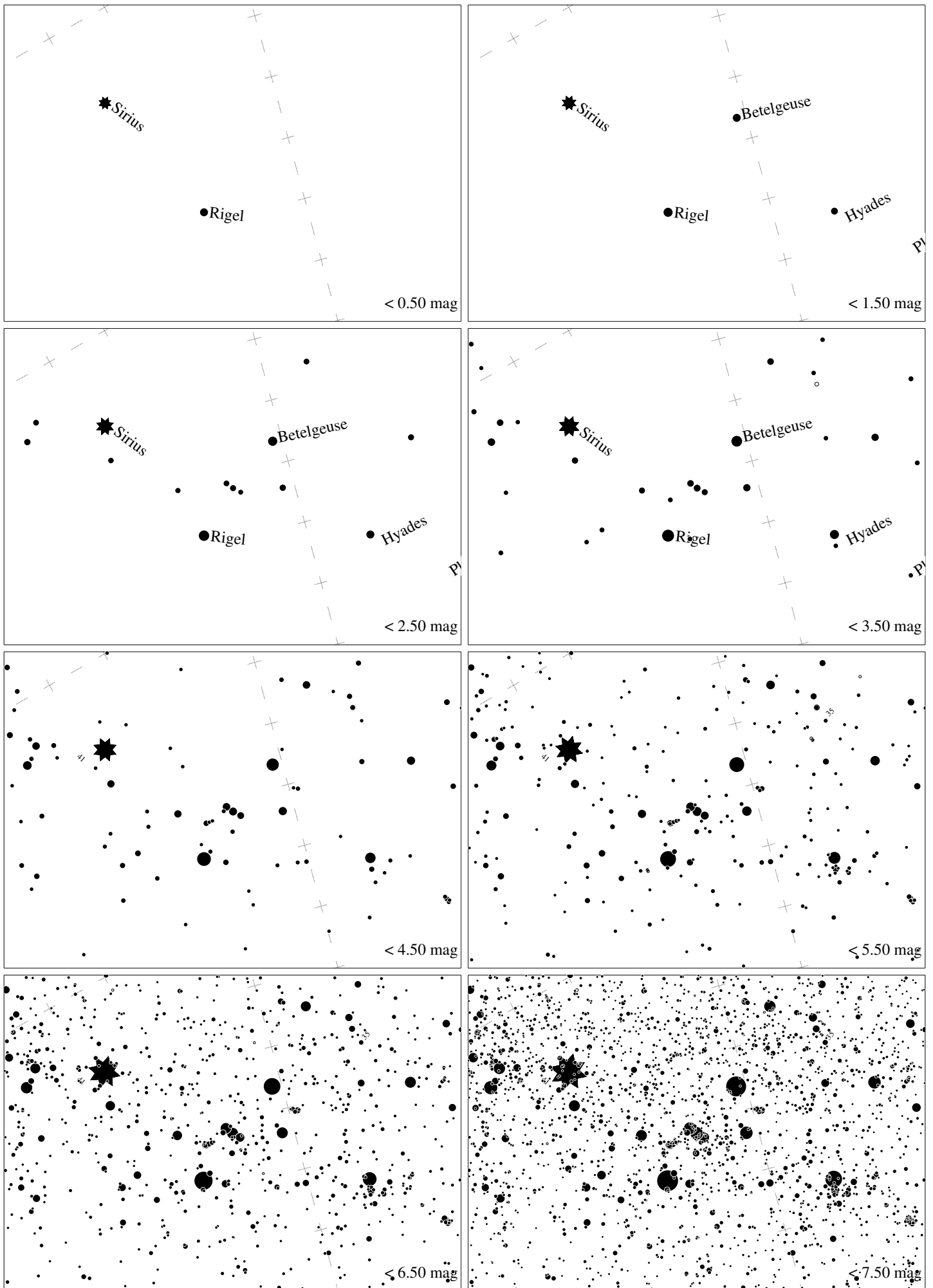
Maps for Globe at Night at latitude 10° , 2018-01-02, 21 h local time (Sun at -44°), transparent air. Lines from N(E,S,W) to zenith shown (crosses each 10°). Orion's belt is 69° to the left from S, at 61° height. Star clusters M 41 and M35 marked when appropriate. Map vertical size is 50° . *Jan Hollan maps, CzechGlobe*



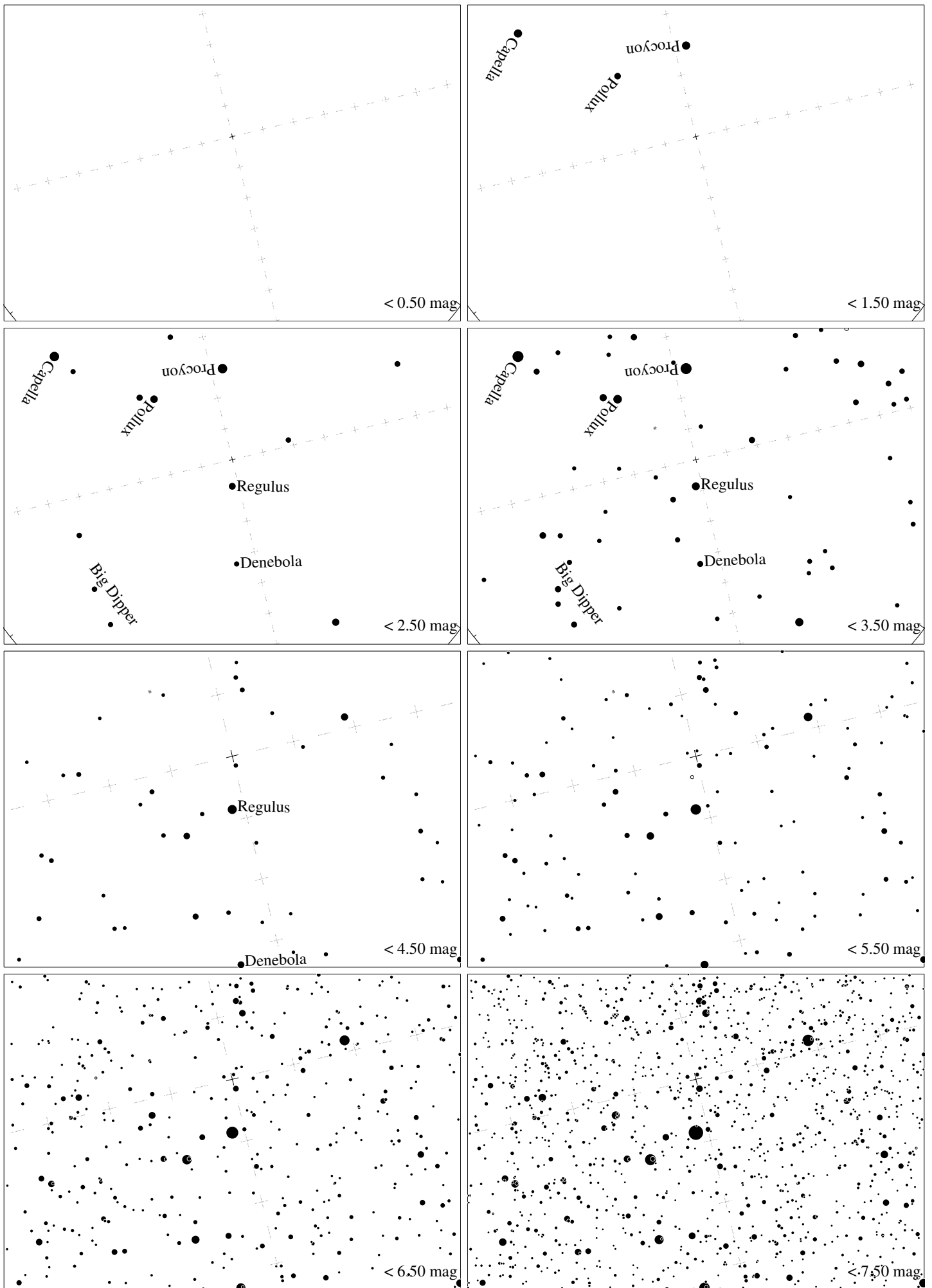
Maps for Globe at Night at latitude 10° , 2019-01-31, 21 h local time (Sun at -43°), transparent air. Lines from N(E,S,W) to zenith shown (crosses each 10°). Orion's belt is 8° to the right from S, at 79° height. Star clusters M 41 and M 35 marked when appropriate. Map vertical size is 50° . *Jan Hollan maps, CzechGlobe*



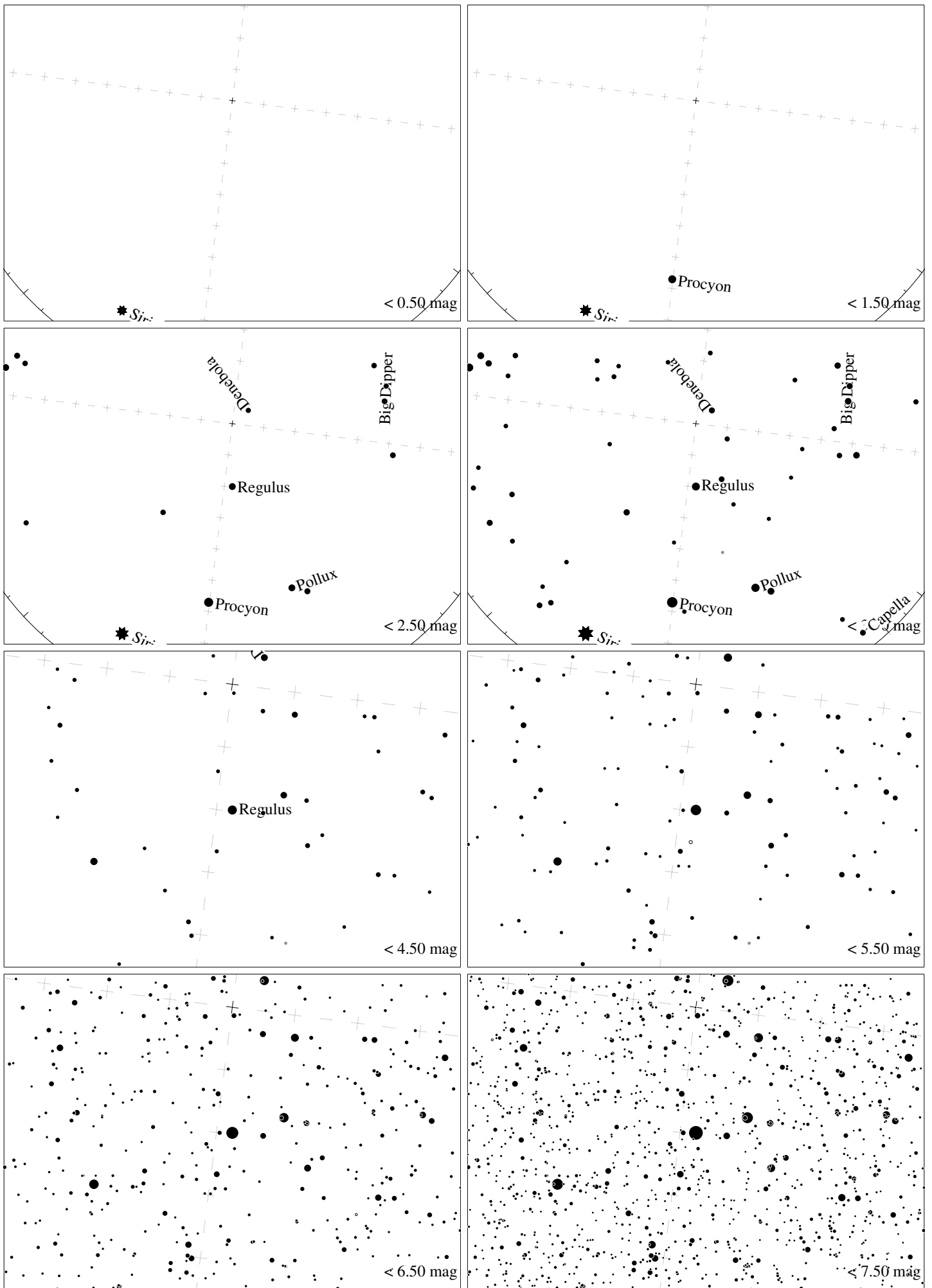
Maps for Globe at Night at latitude 10° , 2019-03-02, 21 h local time (Sun at -42°), transparent air. Lines from N(E,S,W) to zenith shown (crosses each 10°). Pollux is 4° to the right from N, at 72° height. Star cluster M35 marked when appropriate. Map vertical size is 50° . *Jan Hollan maps, CzechGlobe*



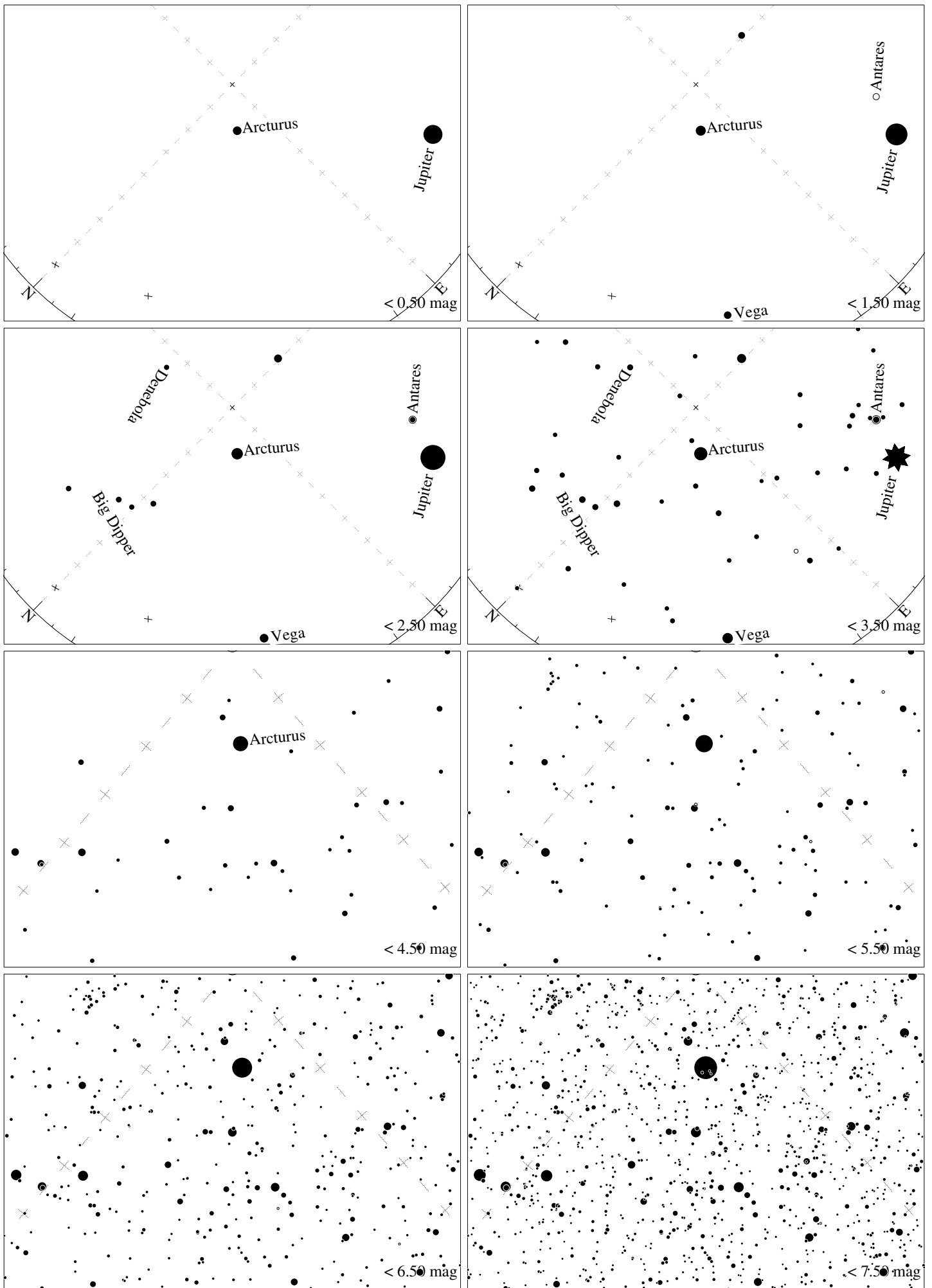
Maps for Globe at Night at latitude 10° , 2019-03-02, 21 h local time (Sun at -42°), transparent air. Lines from N(E,S,W) to zenith shown (crosses each 10°). Orion's belt is 72° to the right from S, at 57° height. Star clusters M 41 and M35 marked when appropriate. Map vertical size is 50° . *Jan Hollan maps, CzechGlobe*



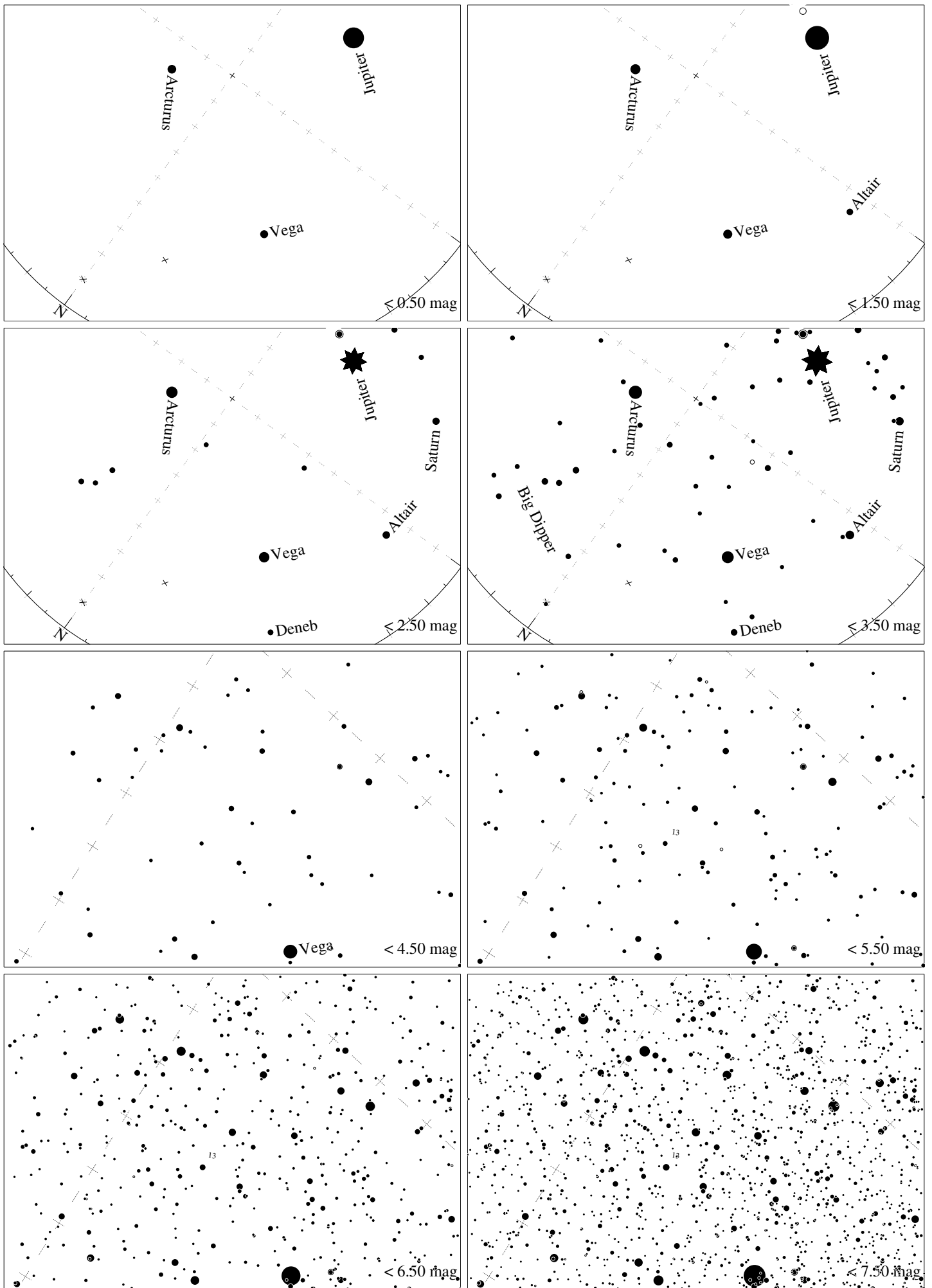
Maps for Globe at Night at latitude 10° , 2019-03-31, 21 h local time (Sun at -42°), transparent air. Lines from N(E,S,W) to zenith shown (crosses each 10°). Regulus (α Leonis) is 76° to the right from N, at 82° height. Detailed maps 50° vertically, the first four maps 100° . *Jan Hollan maps, CzechGlobe*



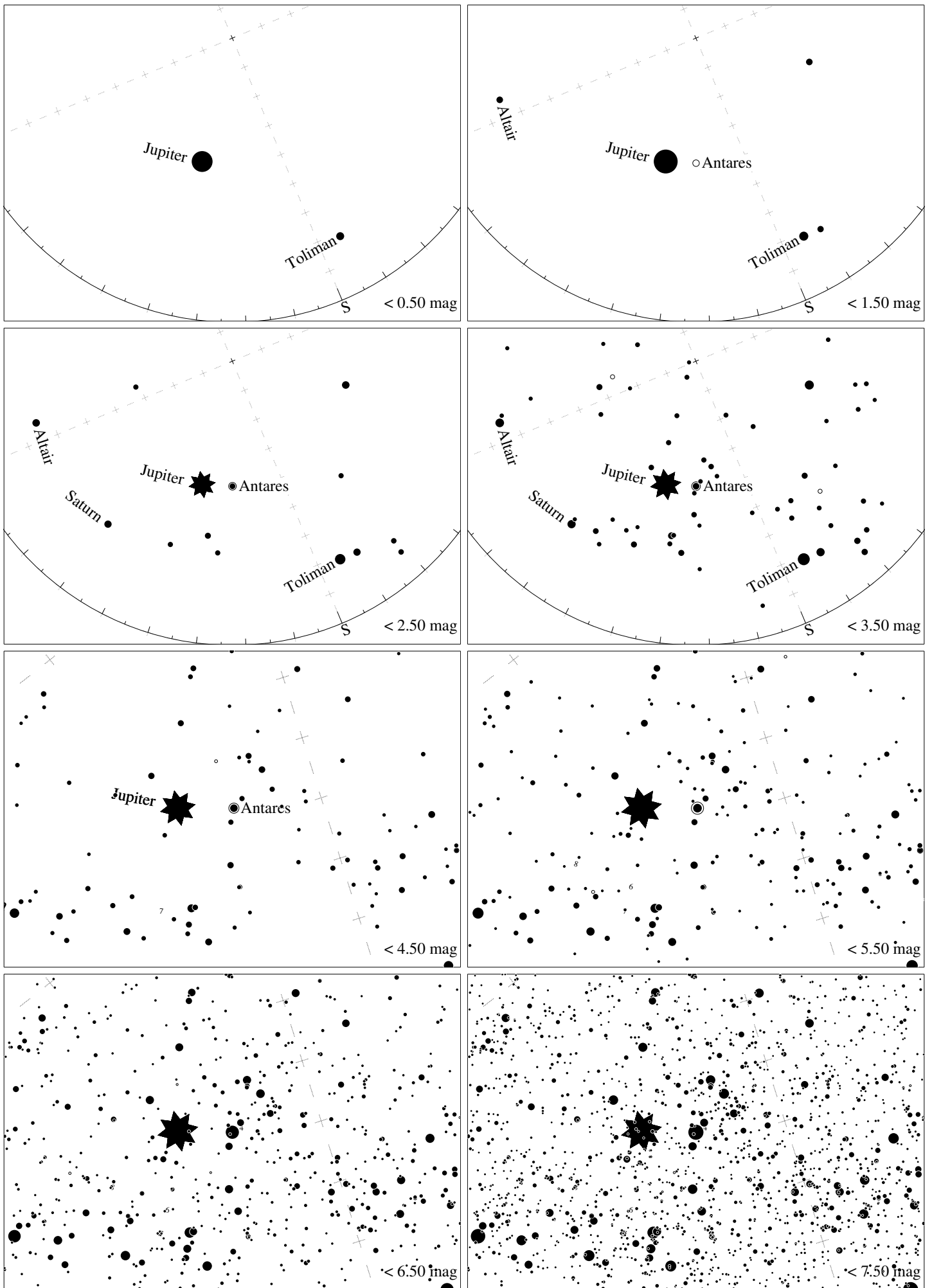
Maps for Globe at Night at latitude 10° , 2019-04-29, 21 h local time (Sun at -40°), transparent air. Lines from N(E,S,W) to zenith shown (crosses each 10°). Regulus (α Leonis) is 83° to the left from N, at 70° height. Detailed maps 50° vertically, the first four maps 100° . *Jan Hollan maps, CzechGlobe*



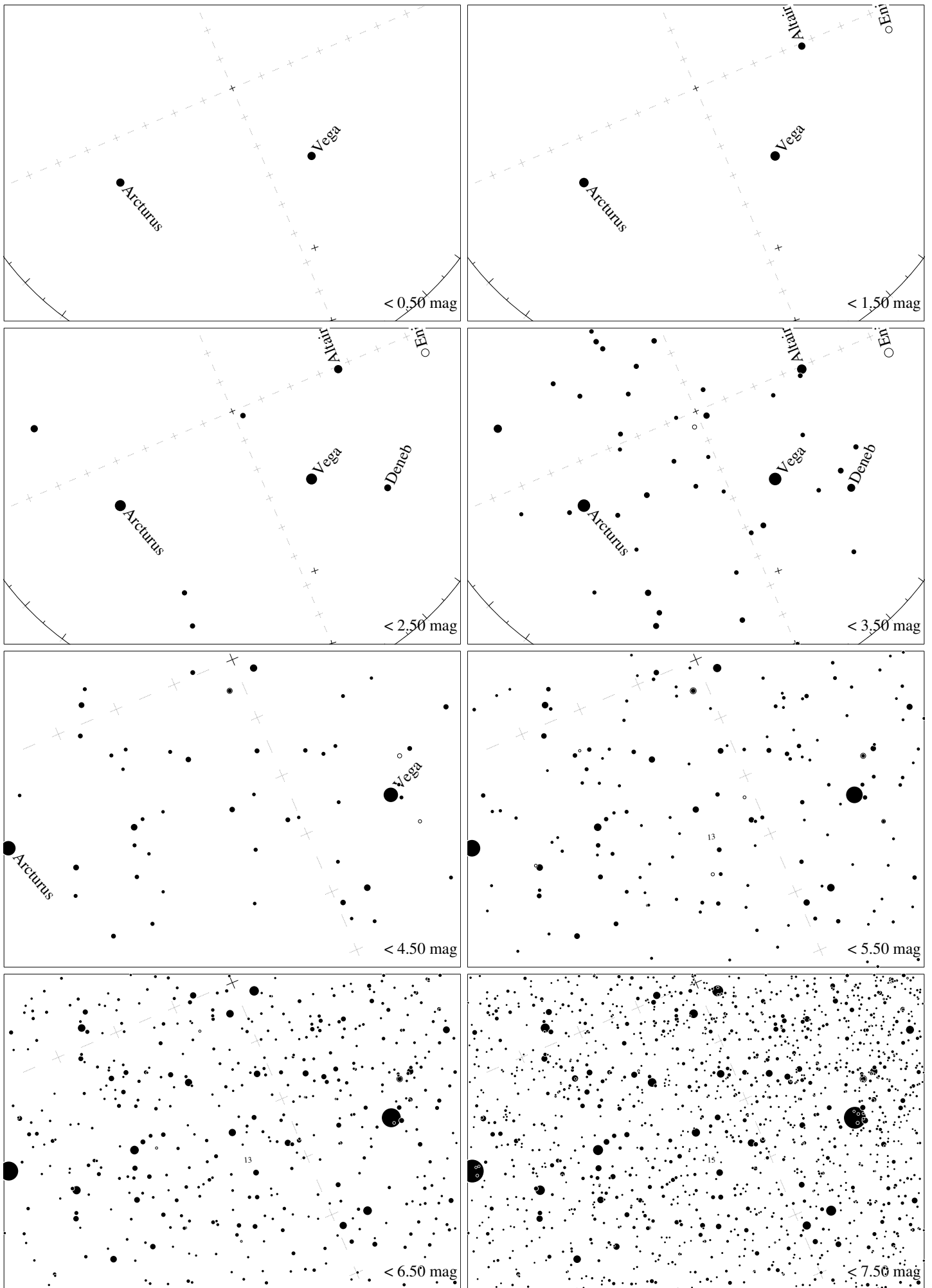
Maps for Globe at Night latitude 10° , 2019-05-29, 21 h local time (Sun at -36°), transparent air. Lines from N(E,S,W) to zenith shown (crosses each 10°). Centered on Izar (ϵ Bootis), which is 44° to the right from N, at 65° height. Detailed maps 50° vertically, the first four maps 100° . *Jan Hollan, CzechGlobe*



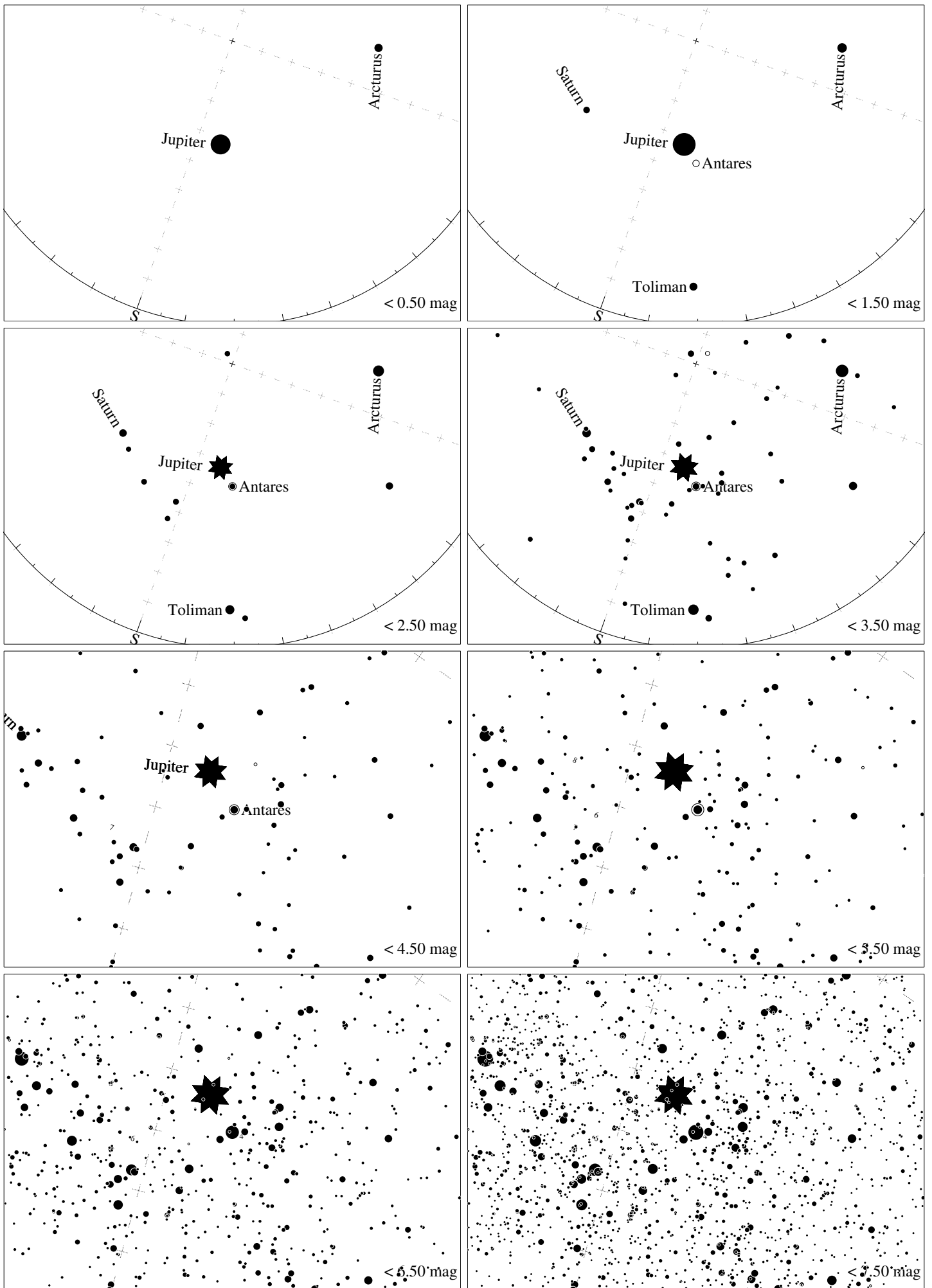
Maps for Globe at Night latitude 10° , 2019-06-28, 22 h local time (Sun at -34°), transparent air. Lines from N(E,S,W) to zenith shown (crosses each 10°). Centered on ζ Herculis, which is 36° to the right from N, at 62° height. Detailed maps 50° vertically, the first four maps 100° . *Jan Hollan, CzechGlobe*



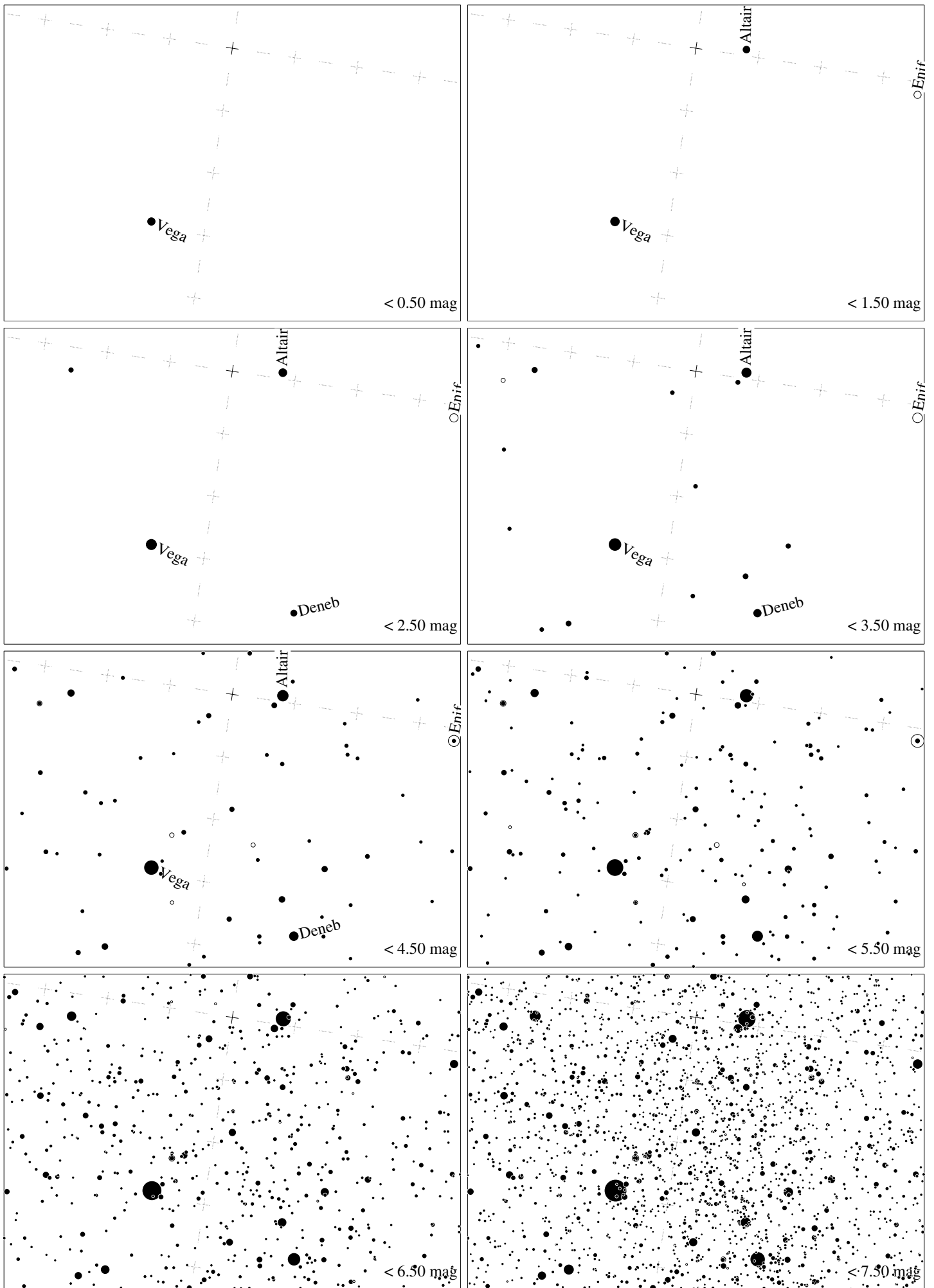
Maps for Globe at Night latitude 10° , 2019-06-28, 21 h local time (Sun at -34°), transparent air. Lines from N(E,S,W) to zenith shown (crosses each 10°). Centered on Antares (α Scorpii), which is 23° to the left from S, at 50° height. Detailed maps 50° vertically, the first four maps 100° . *Jan Hollan, CzechGlobe*



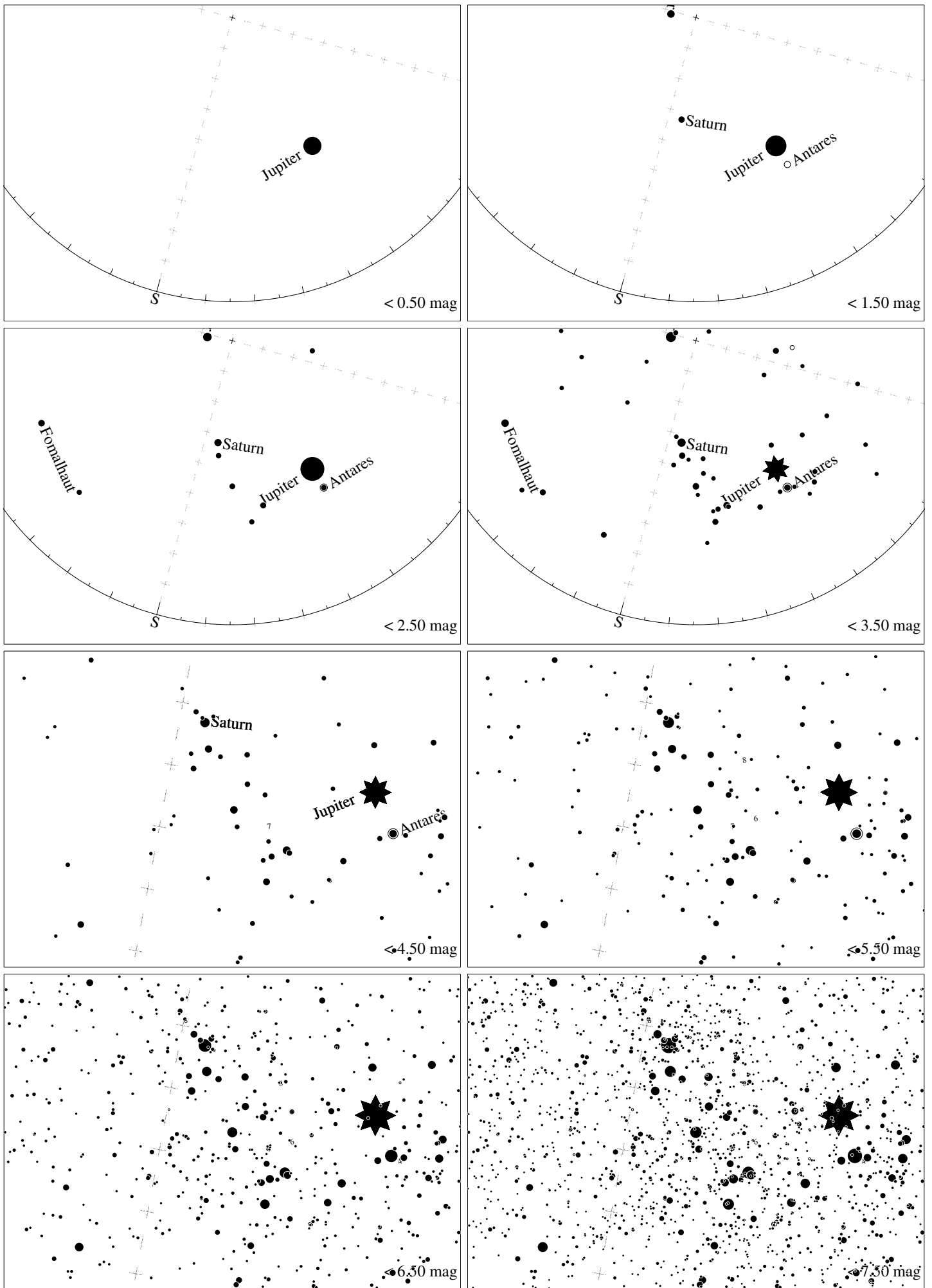
Maps for Globe at Night latitude 10° , 2019-07-28, 22 h local time (Sun at -36°), transparent air. Lines from N(E,S,W) to zenith shown (crosses each 10°). Centered on ζ Herculis, which is 23° to the left from N, at 66° height. Detailed maps 50° vertically, the first four maps 100° . *Jan Hollan, CzechGlobe*



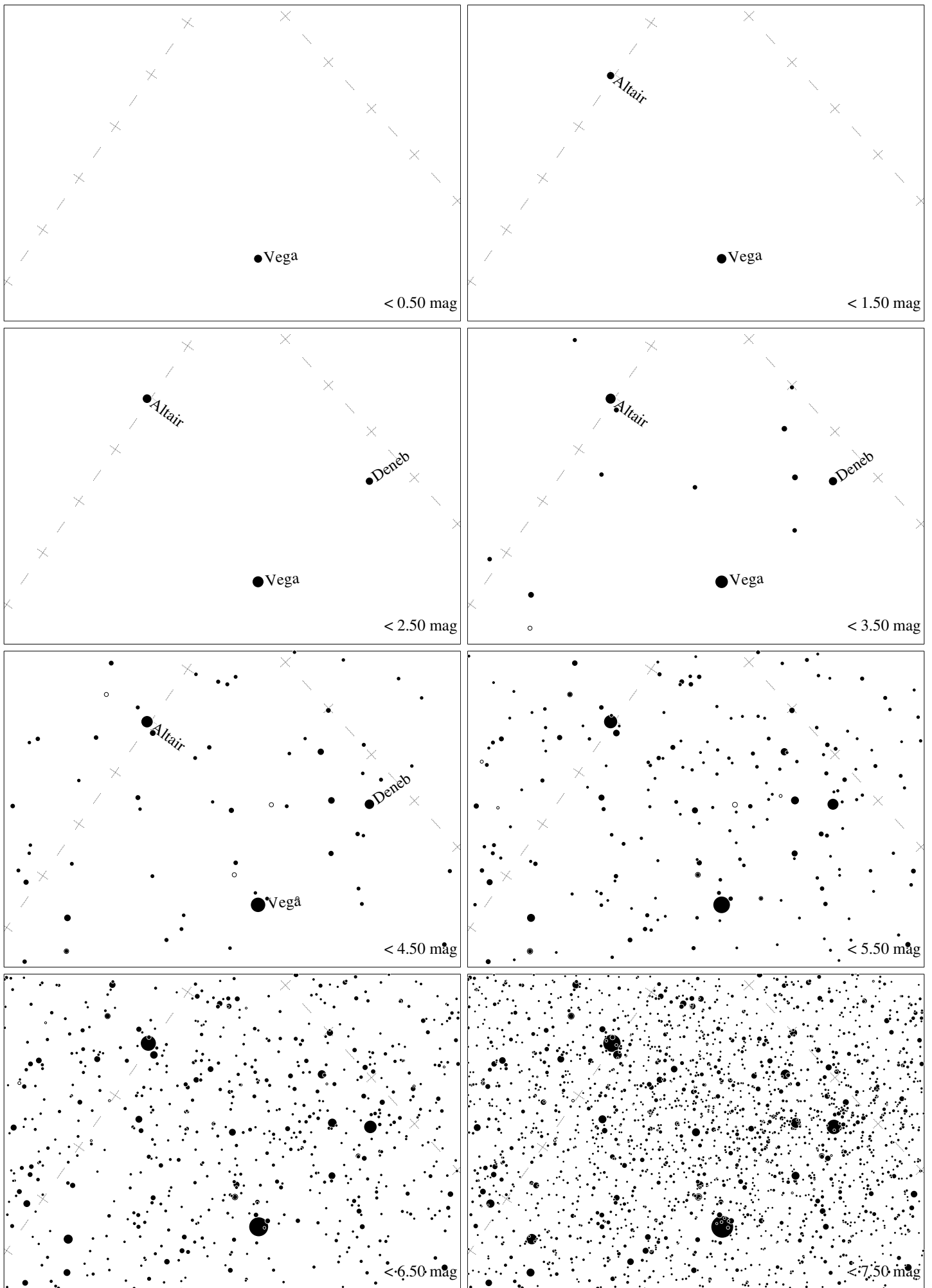
Maps for Globe at Night latitude 10° , 2019-07-28, 21 h local time (Sun at -36°), transparent air. Lines from N(E,S,W) to zenith shown (crosses each 10°). Centered on Antares (α Scorpii), which is 20° to the right from S, at 51° height. Detailed maps 50° vertically, the first four maps 100° . *Jan Hollan, CzechGlobe*



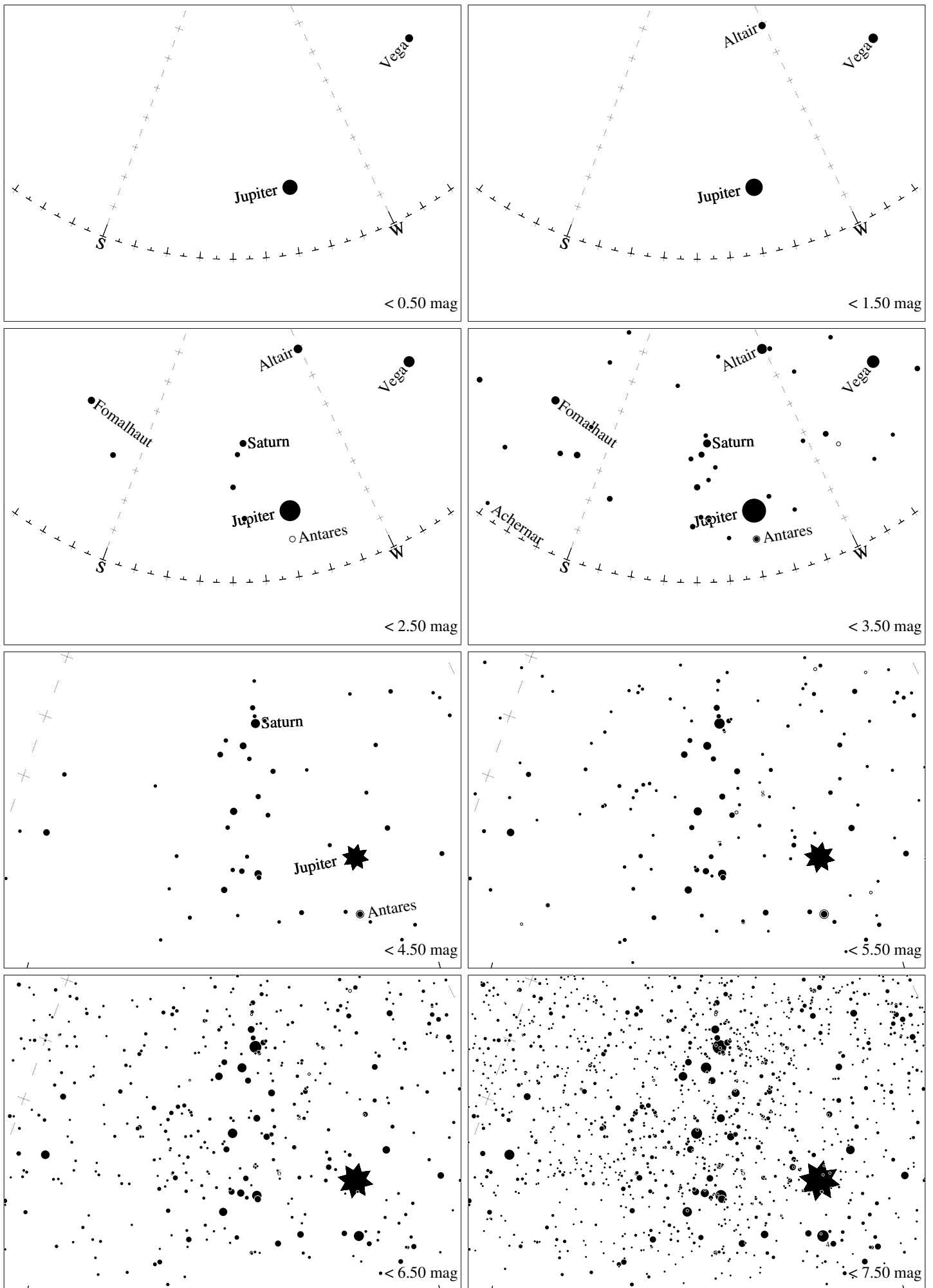
Maps for Globe at Night latitude 10° , 2019-08-26, 21 h local time (Sun at -40°), transparent air. Lines from N(E,S,W) to zenith shown (crosses each 10°). Centered on Albireo (β Cygni), 9° to the right from N, at 72° height, near the centre of Summer Triangle. Map vertical size is 50° . *Jan Hollan, CzechGlobe*



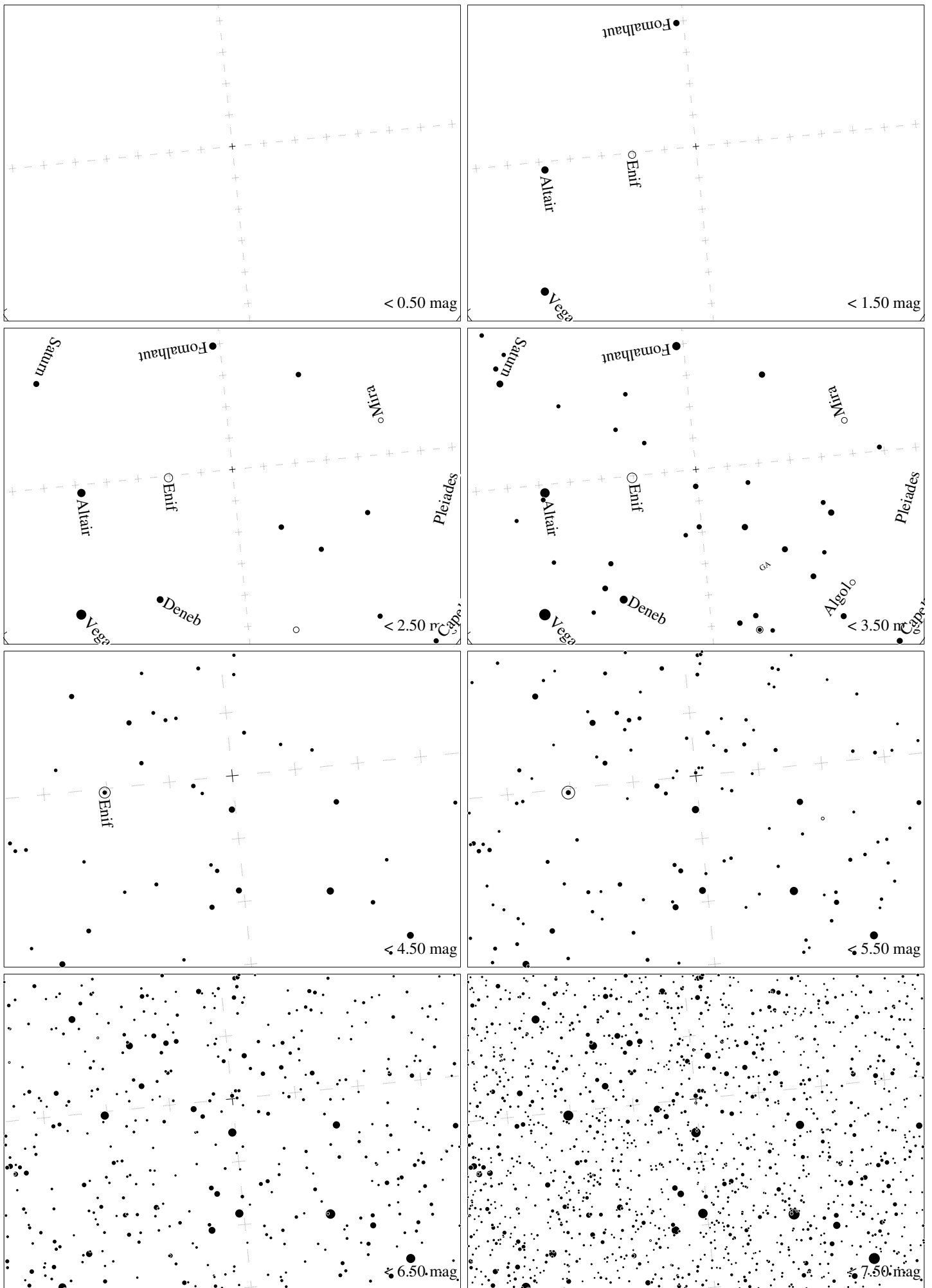
Maps for Globe at Night latitude 10° , 2019-08-26, 21 h local time (Sun at -40°), transparent air. Lines from N(E,S,W) to zenith shown (crosses each 10°). Centered on Kaus Australis (ϵ Sagittarii), which is 15° to the right from S, at 44° height. Detailed maps 50° vertically, the first four maps 100° . Jan Hollan, CzechGlobe



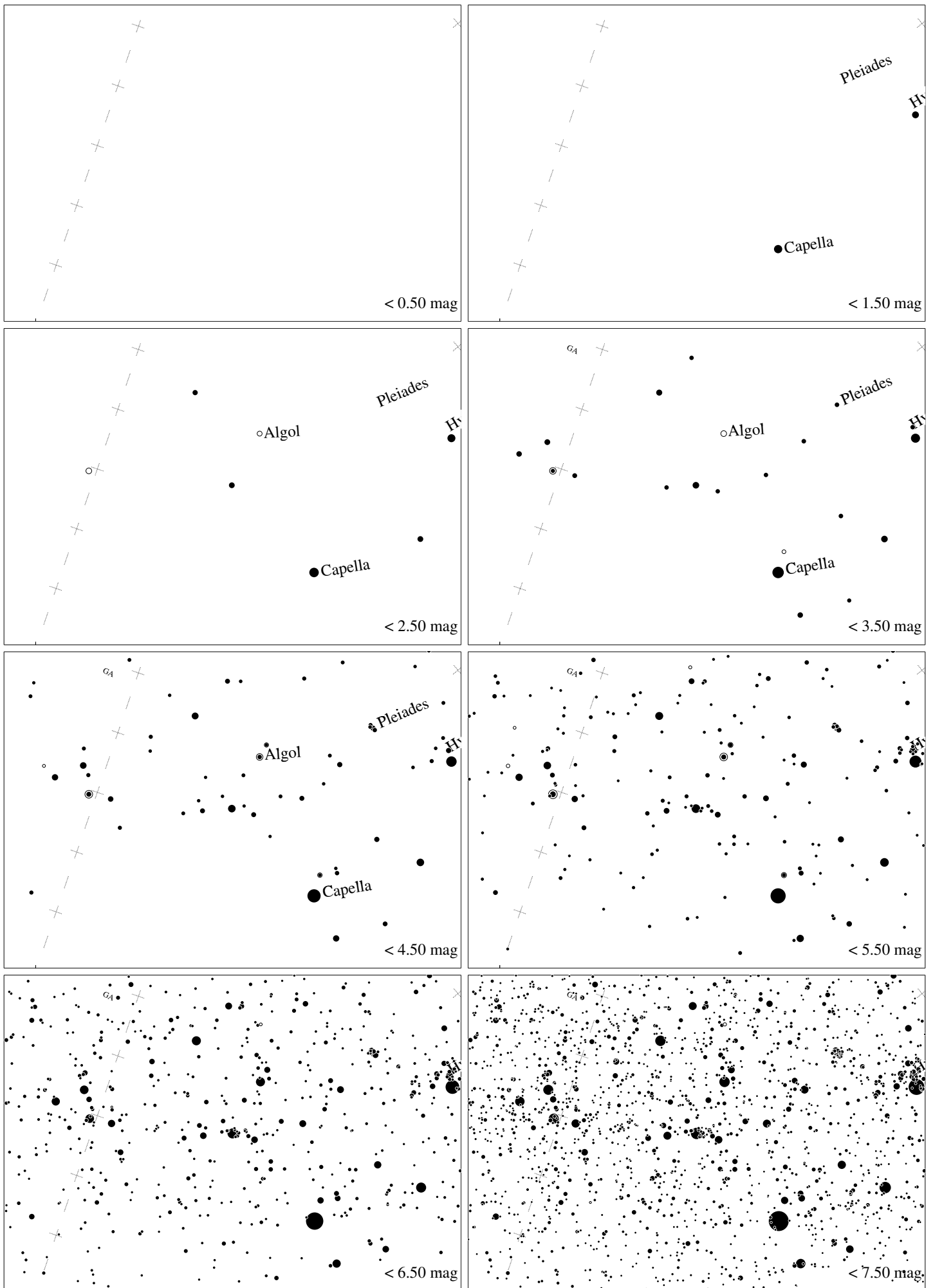
Maps for Globe at Night latitude 10° , 2019-09-24, 21 h local time (Sun at -46°), transparent air. Lines from N(E,S,W) to zenith shown (crosses each 10°). Centered on Albireo (β Cygni), 50° to the left from N, at 60° height, near the centre of Summer Triangle. Map vertical size is 50° . *Jan Hollan, CzechGlobe*



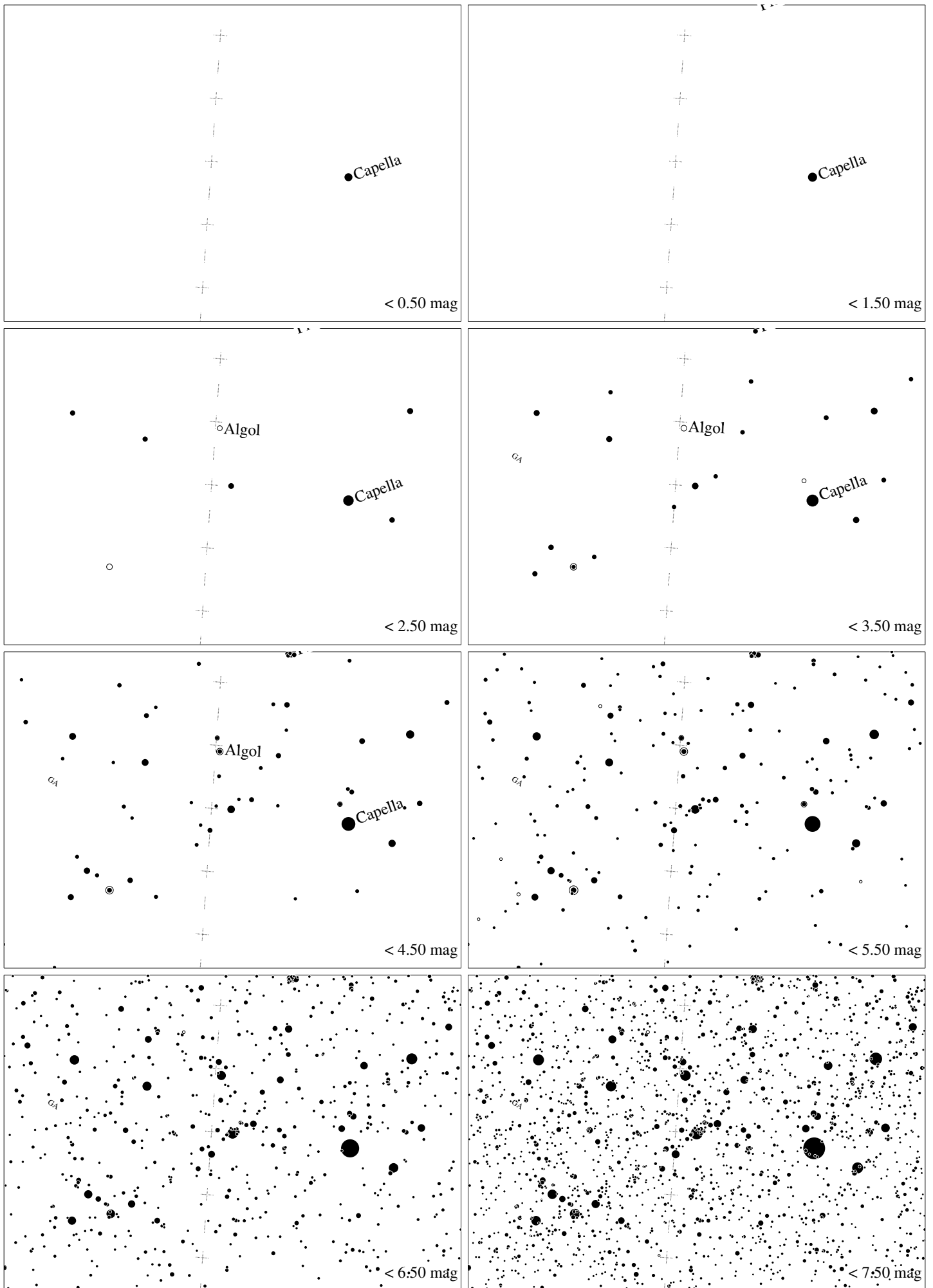
Maps for Globe at Night latitude 10°, 2019-09-24, 21 h local time (Sun at -46°), transparent air. Lines from N(E,S,W) to zenith shown (crosses each 10°). Centered on Kaus Australis (ε Sagittarii), which is 40° to the right from S, at 30° height. Detailed maps 50° vertically, the first four maps 100°. *Jan Hollan, CzechGlobe*



Maps for Globe at Night latitude 10° , 2019-10-23, 21 h local time (Sun at -50°), transparent air. Lines from N(E,S,W) to zenith shown (crosses each 10°). The map is centered on Markab (α Pegasi), which is 6° to the left from N, at 85° height. Detailed maps 50° vertically, the first four maps 100° . *Jan Hollan, CzechGlobe*



Maps for Globe at Night latitude 10° , 2019-11-22, 21 h local time (Sun at -49°), transparent air. Lines from N(E,S,W) to zenith shown (crosses each 10°). Centered at Mirfak (α Persei), 29° to the right from N, at 41° height. The brightest star is Capella. Map vertical size 50° . *Jan Hollan, CzechGlobe*



Maps for Globe at Night latitude 10° , 2019-12-22, 21 h local time (Sun at -45°), transparent air. Lines from N(E,S,W) to zenith shown (crosses each 10°). Centered at Mirfak (α Persei), 5° to the right from N, at 50° height. The brightest star is Capella. Map vertical size 50° . *Jan Hollan, CzechGlobe*