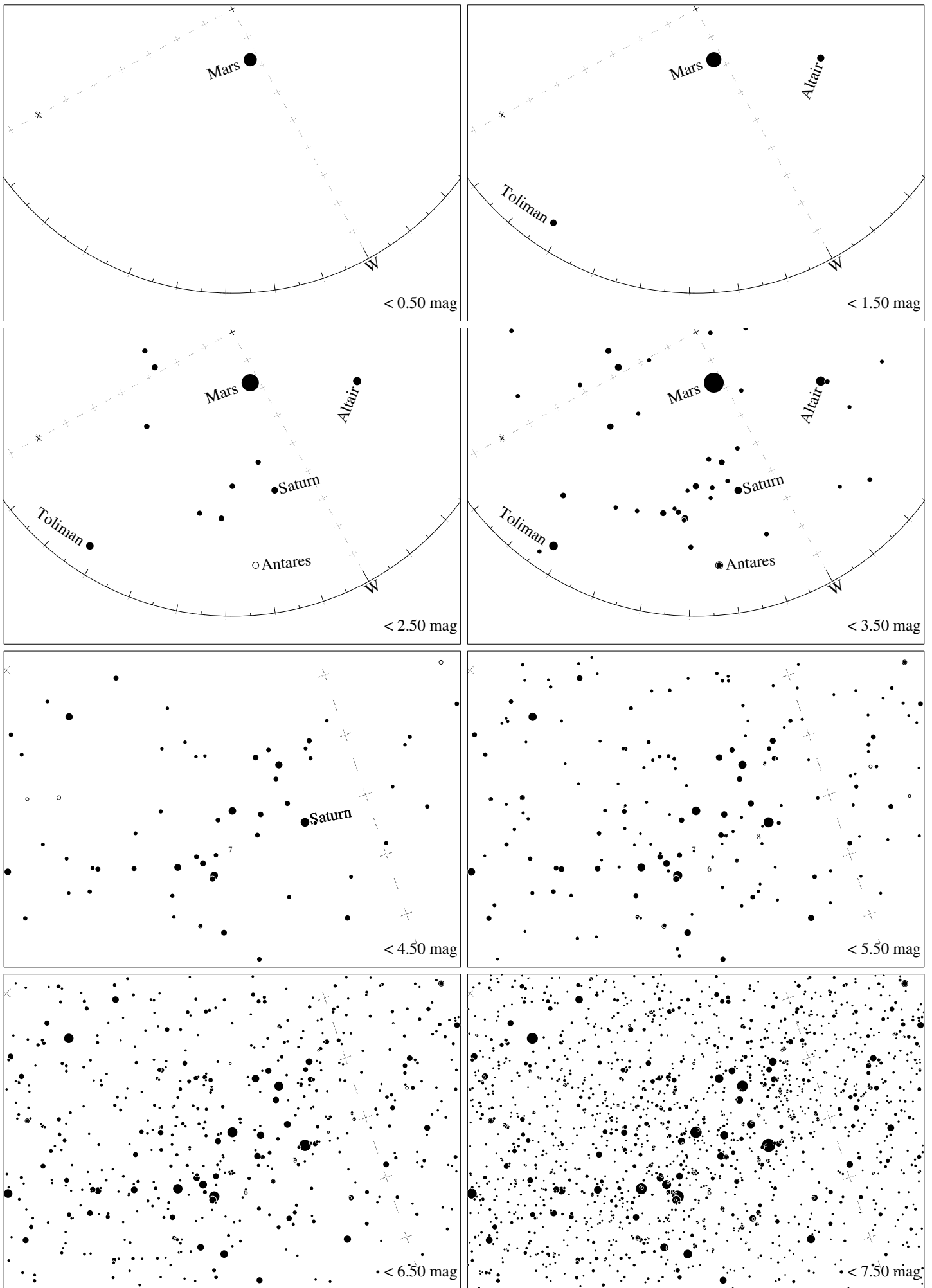


Maps for Globe at Night latitude -20° , 2018-09-05, 21 h local time (Sun at -45°), transparent air. Lines from N(E,S,W) to zenith shown (crosses each 10°). Centered on Kaus Australis (ϵ Sagittarii), which is 51° to the right from S, at 65° height. Detailed maps 50° vertically, the first four maps 100° . Jan Hollan, CzechGlobe



Maps for Globe at Night latitude -20° , 2018-10-05, 21 h local time (Sun at -42°), transparent air. Lines from N(E,S,W) to zenith shown (crosses each 10°). Centered on Kaus Australis (ϵ Sagittarii), which is 61° to the right from S, at 41° height. Detailed maps 50° vertically, the first four maps 100° . Jan Hollan, CzechGlobe