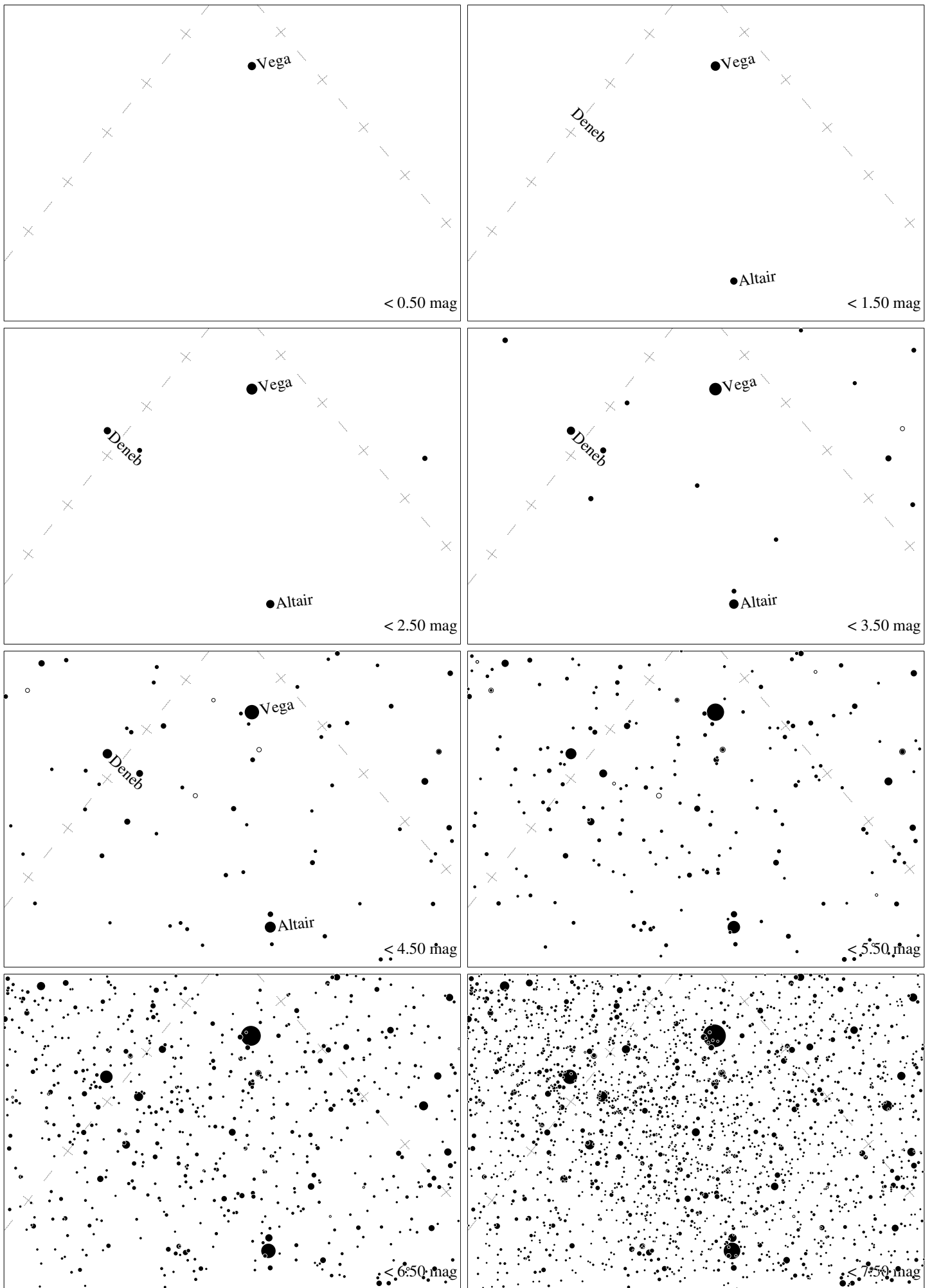
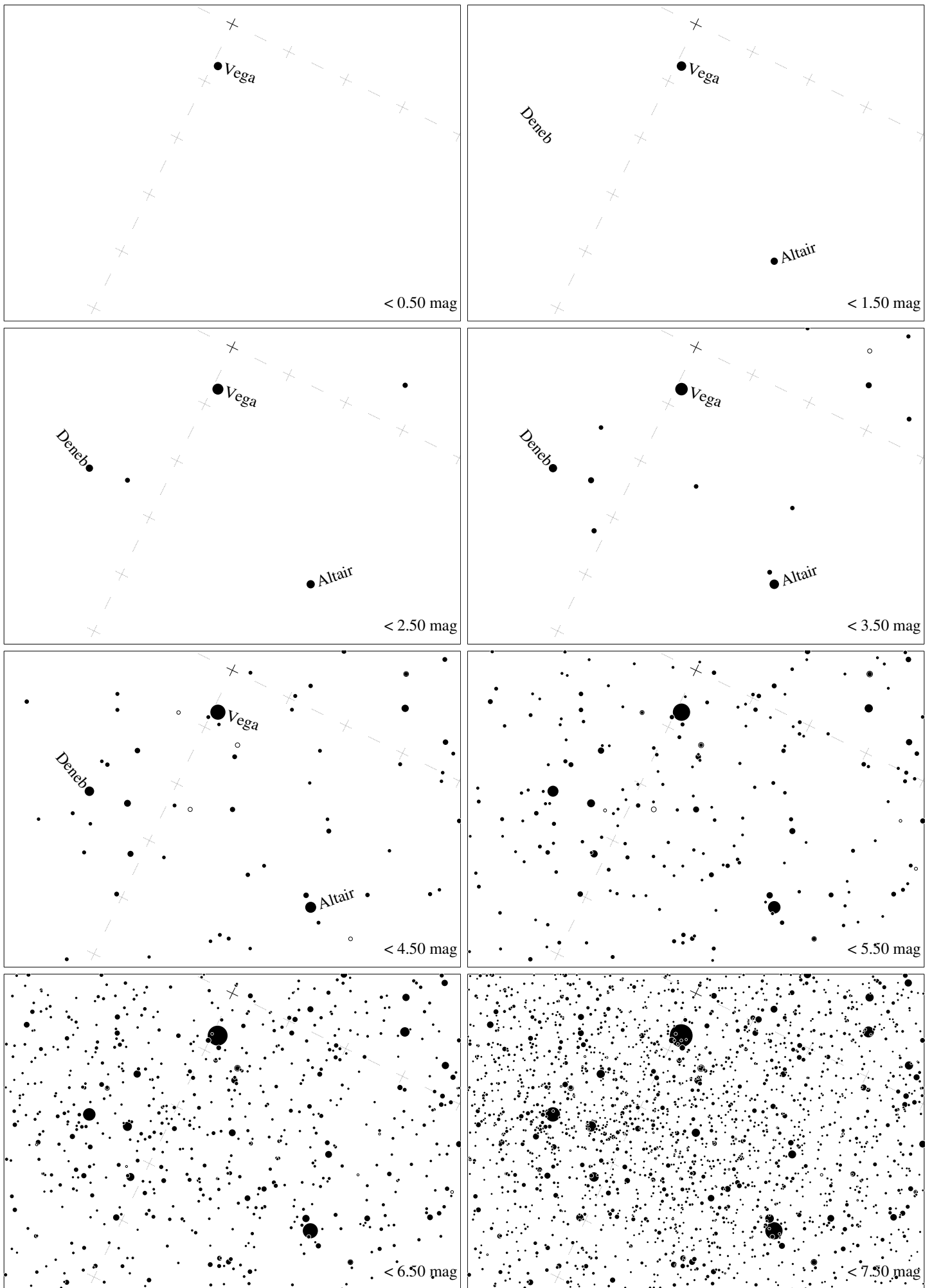


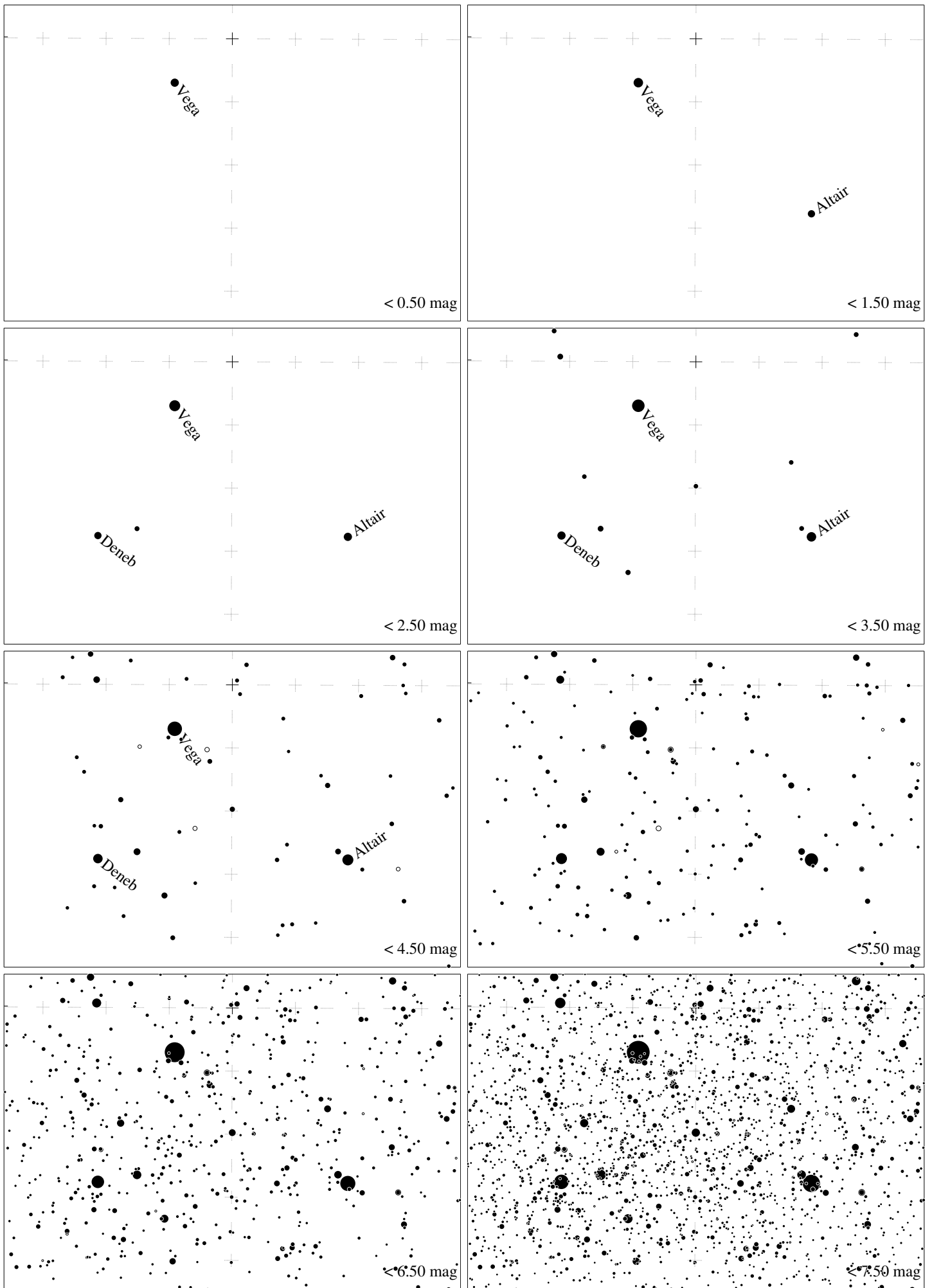
Maps for Globe at Night latitude  $60^\circ$ , 2018-08-06, 21 h local time (Sun at  $-5^\circ$ ), transparent air. Lines from N(E,S,W) to zenith shown (crosses each  $10^\circ$ ). Centered on Albireo ( $\beta$  Cygni),  $36^\circ$  to the left from S, at  $55^\circ$  height, near the centre of Summer Triangle. Map vertical size is  $50^\circ$ . *Jan Hollan, CzechGlobe*



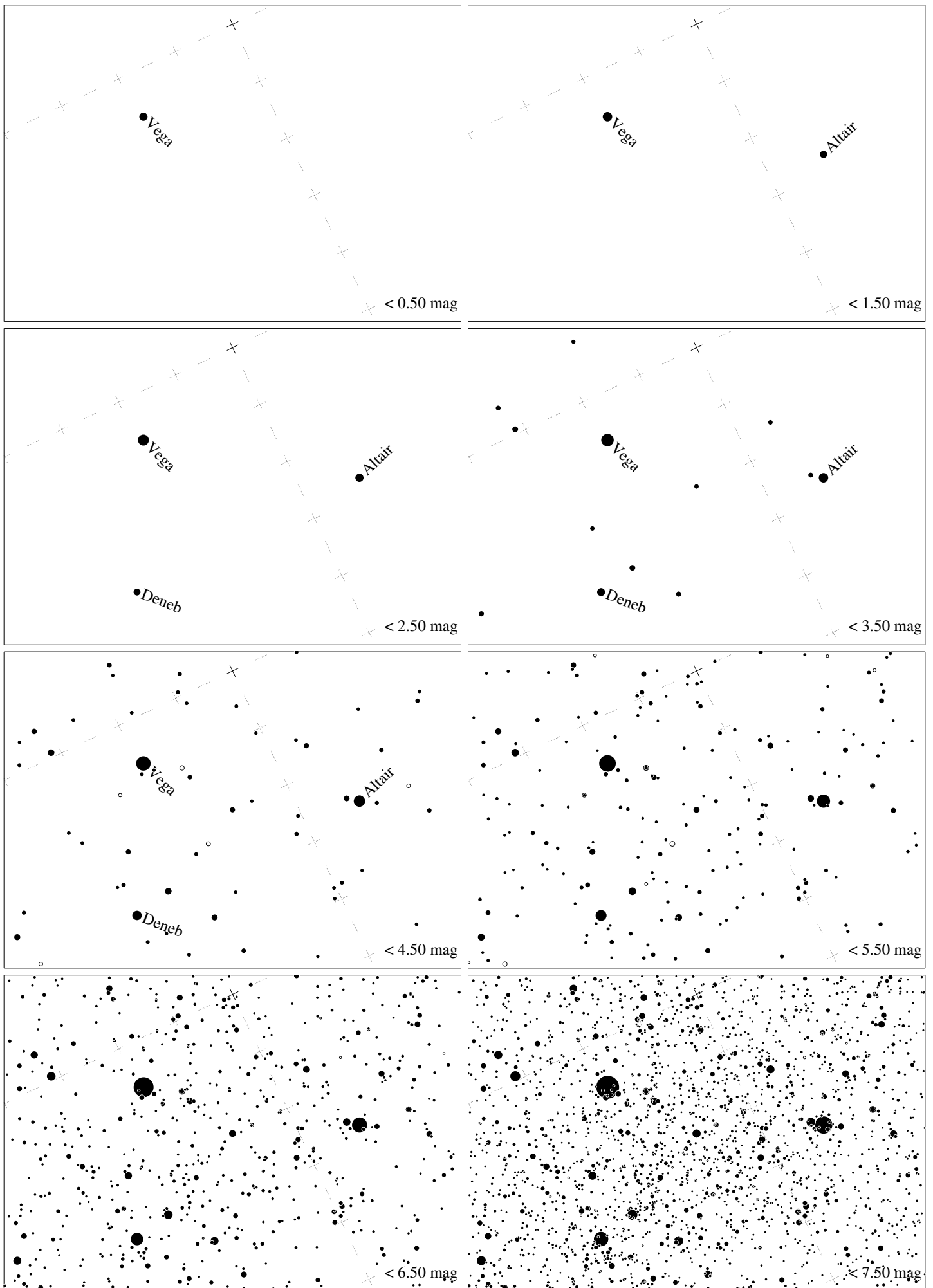
Maps for Globe at Night latitude  $50^\circ$ , 2018-08-06, 21 h local time (Sun at  $-12^\circ$ ), transparent air. Lines from N(E,S,W) to zenith shown (crosses each  $10^\circ$ ). Centered on Albireo ( $\beta$  Cygni),  $46^\circ$  to the left from S, at  $62^\circ$  height, near the centre of Summer Triangle. Map vertical size is  $50^\circ$ . *Jan Hollan, CzechGlobe*



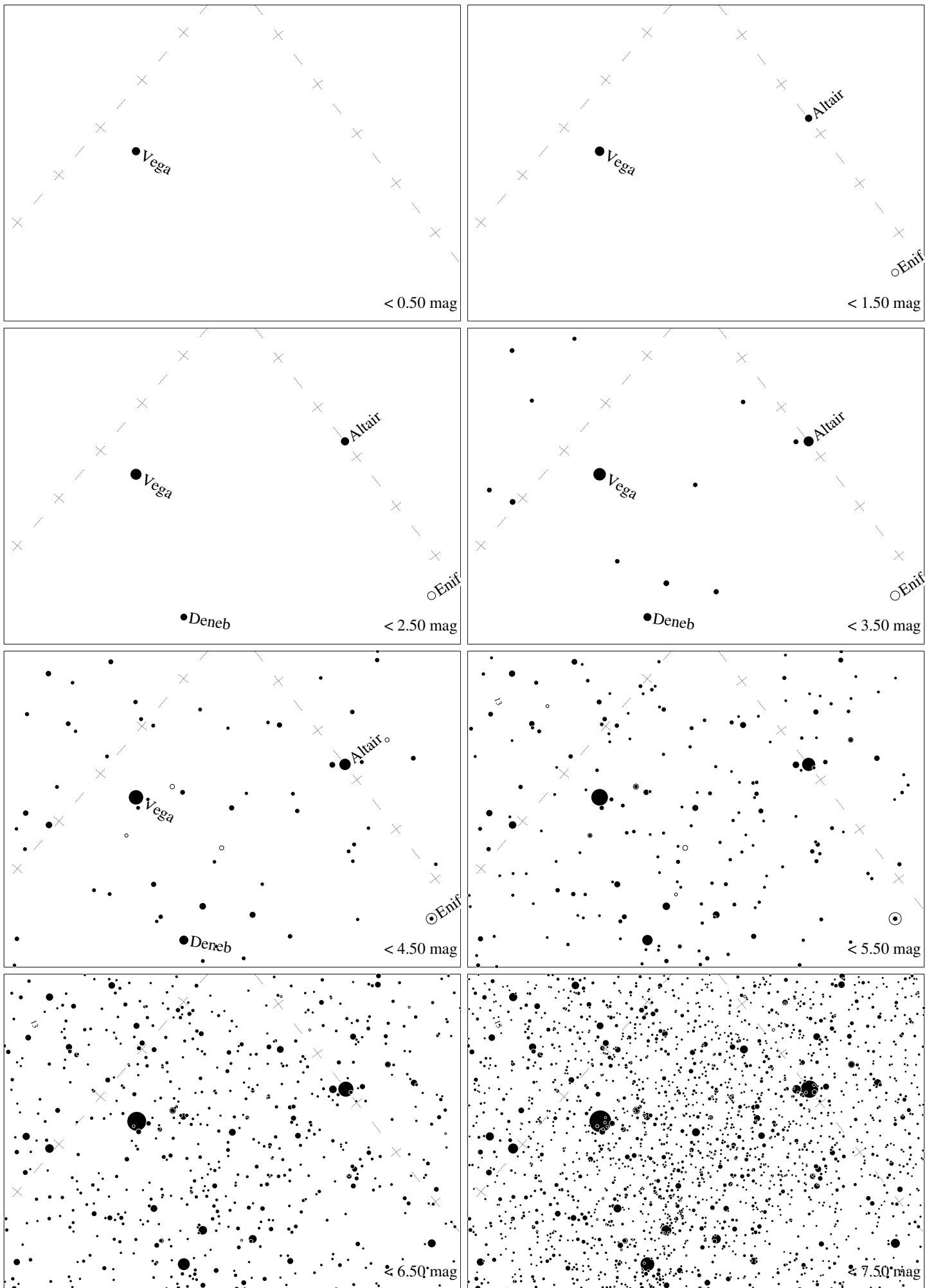
Maps for Globe at Night latitude  $40^\circ$ , 2018-08-06, 21 h local time (Sun at  $-19^\circ$ ), transparent air. Lines from N(E,S,W) to zenith shown (crosses each  $10^\circ$ ). Centered on Albireo ( $\beta$  Cygni),  $64^\circ$  to the left from S, at  $68^\circ$  height, near the centre of Summer Triangle. Map vertical size is  $50^\circ$ . *Jan Hollan, CzechGlobe*



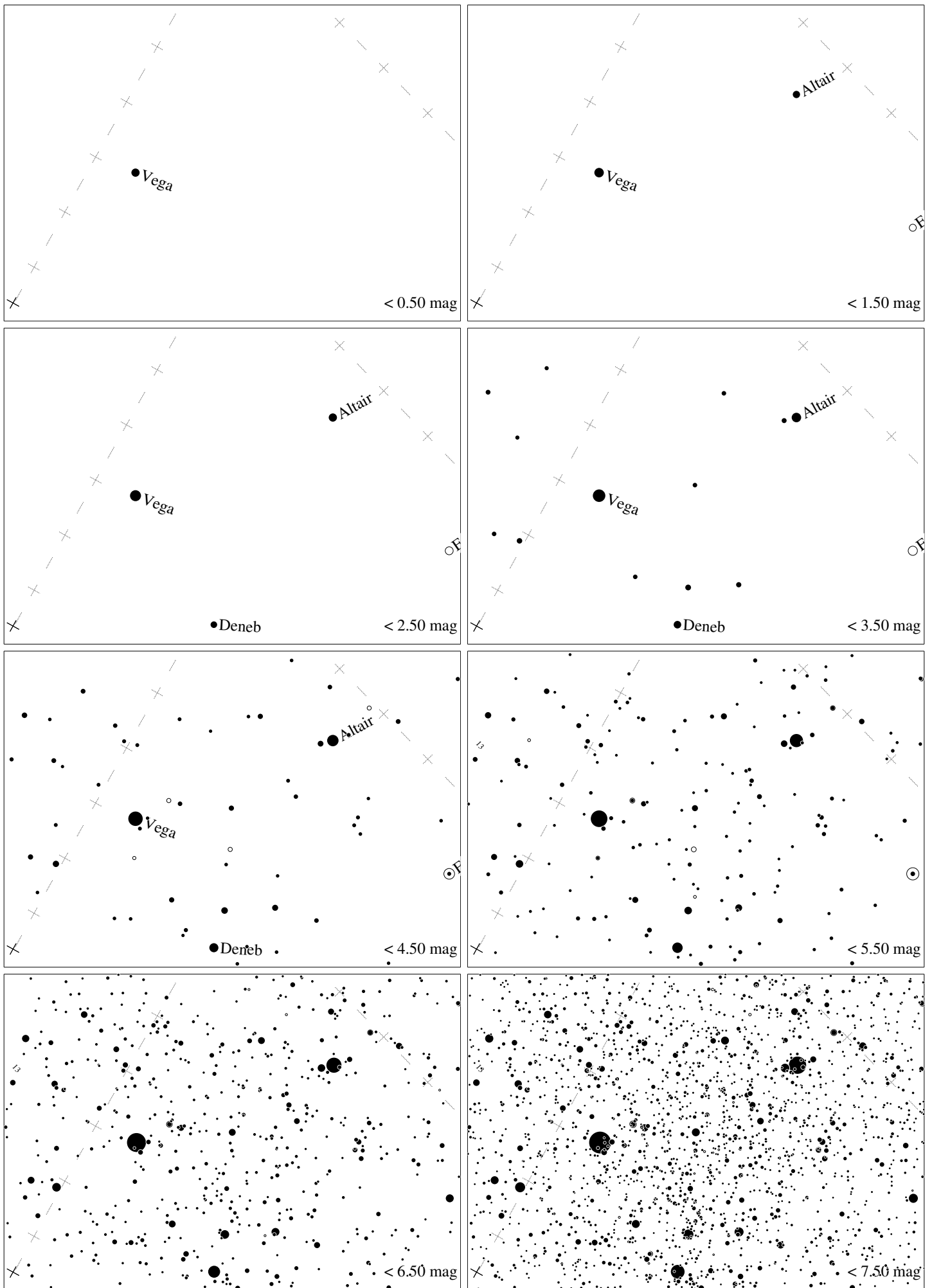
Maps for Globe at Night latitude  $30^\circ$ , 2018-08-06, 21 h local time (Sun at  $-25^\circ$ ), transparent air. Lines from N(E,S,W) to zenith shown (crosses each  $10^\circ$ ). Centered on Albireo ( $\beta$  Cygni),  $90^\circ$  to the right from N, at  $70^\circ$  height, near the centre of Summer Triangle. Map vertical size is  $50^\circ$ . *Jan Hollan, CzechGlobe*



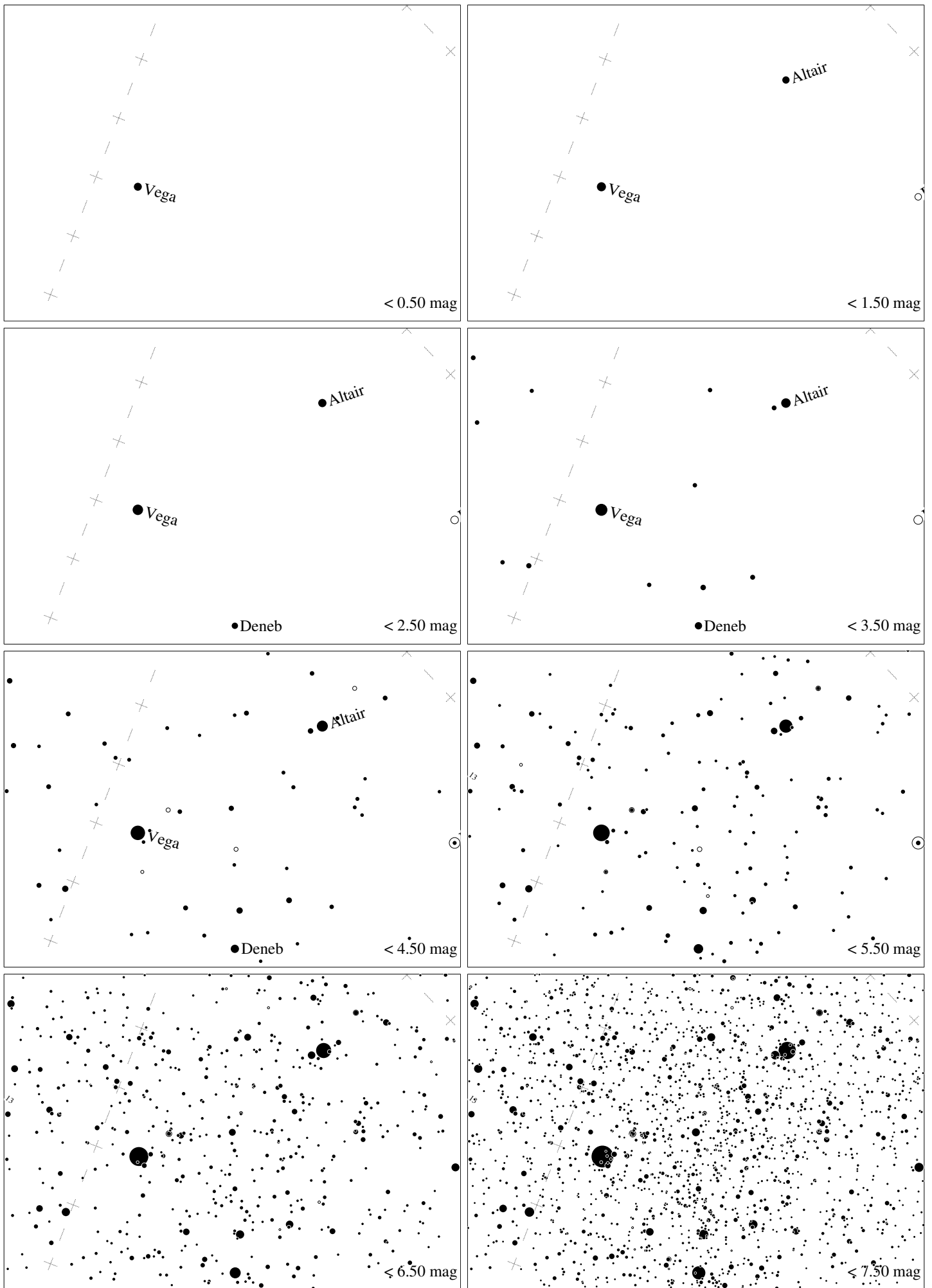
Maps for Globe at Night latitude  $20^\circ$ , 2018-08-06, 21 h local time (Sun at  $-32^\circ$ ), transparent air. Lines from N(E,S,W) to zenith shown (crosses each  $10^\circ$ ). Centered on Albireo ( $\beta$  Cygni),  $64^\circ$  to the right from N, at  $68^\circ$  height, near the centre of Summer Triangle. Map vertical size is  $50^\circ$ . *Jan Hollan, CzechGlobe*



Maps for Globe at Night latitude  $10^\circ$ , 2018-08-06, 21 h local time (Sun at  $-37^\circ$ ), transparent air. Lines from N(E,S,W) to zenith shown (crosses each  $10^\circ$ ). Centered on Albireo ( $\beta$  Cygni),  $47^\circ$  to the right from N, at  $62^\circ$  height, near the centre of Summer Triangle. Map vertical size is  $50^\circ$ . *Jan Hollan, CzechGlobe*

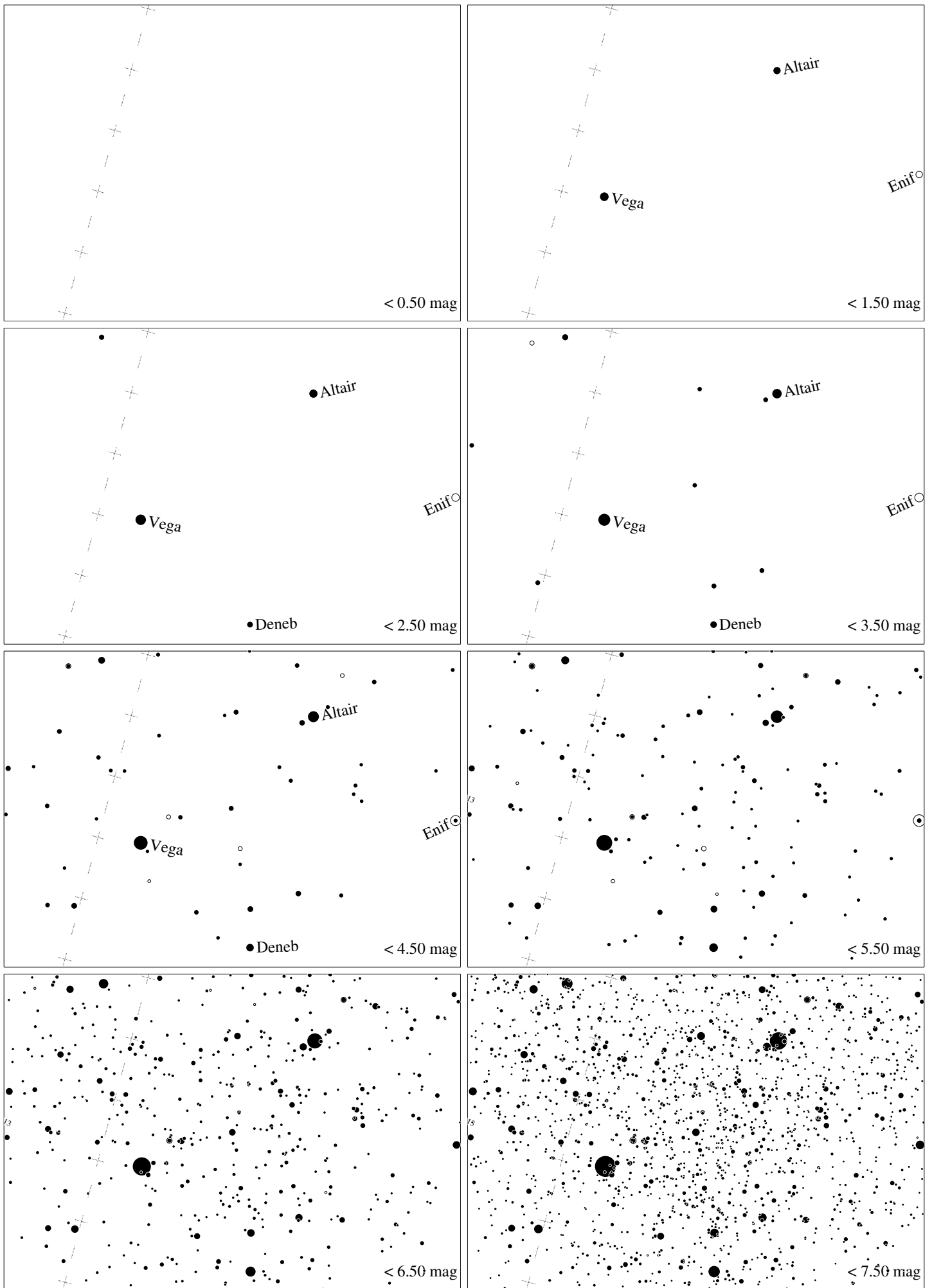


Maps for Globe at Night latitude  $0^\circ$ , 2018-08-06, 21 h local time (Sun at  $-41^\circ$ ), transparent air. Lines from N(E,S,W) to zenith shown (crosses each  $10^\circ$ ). Centered on Albireo ( $\beta$  Cygni),  $36^\circ$  to the right from N, at  $55^\circ$  height, near the centre of Summer Triangle. Map vertical size is  $50^\circ$ . *Jan Hollan, CzechGlobe*

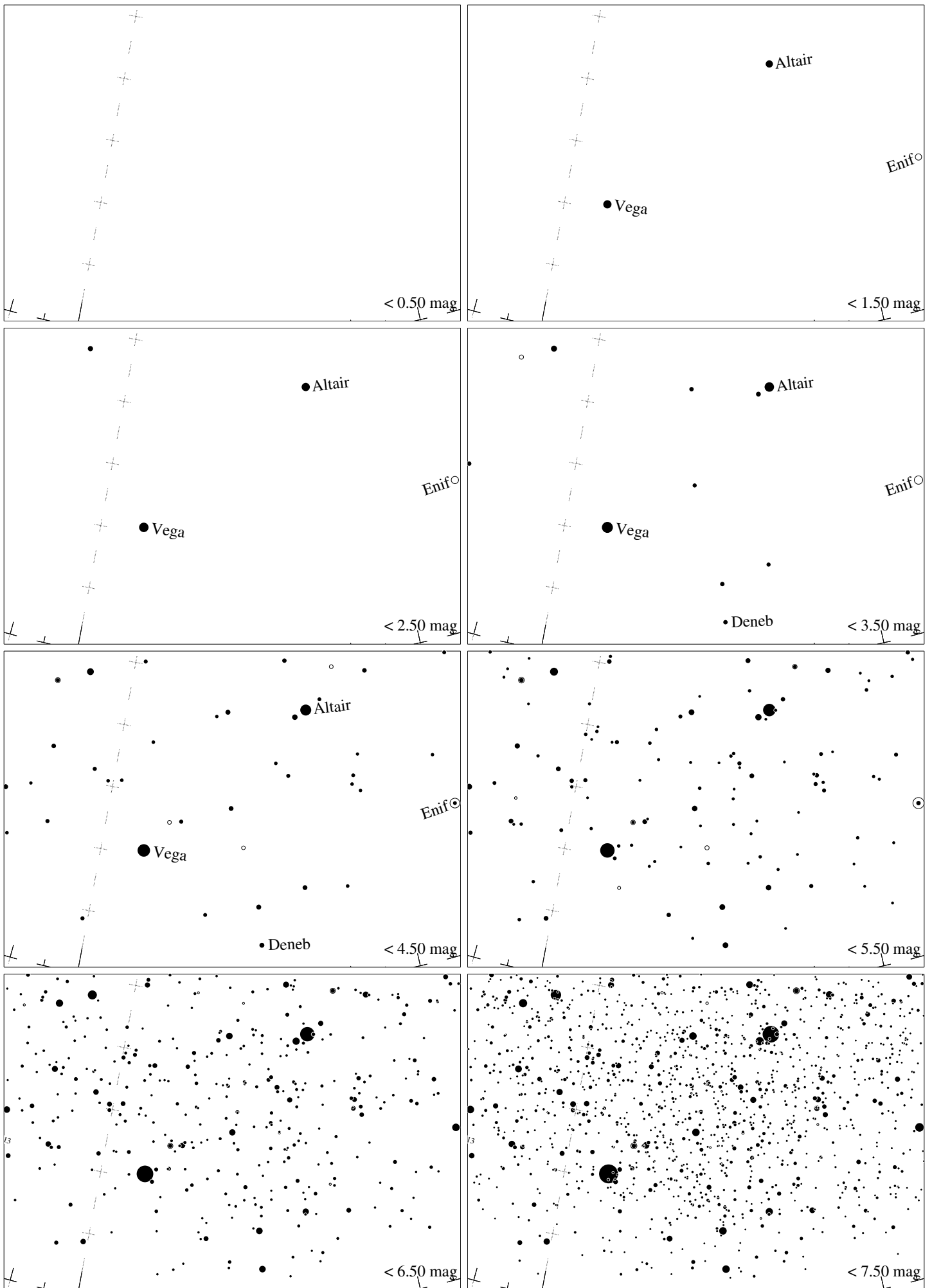


Maps for Globe at Night latitude  $-10^\circ$ , 2018-08-06, 21 h local time (Sun at  $-44^\circ$ ), transparent air. Lines from N(E,S,W) to zenith shown (crosses each  $10^\circ$ ). Centered on Albireo ( $\beta$  Cygni),  $29^\circ$  to the right from N, at  $46^\circ$  height, near the centre of Summer Triangle. Map vertical size is  $50^\circ$ . *Jan Hollan, CzechGlobe*





Maps for Globe at Night latitude  $-20^\circ$ , 2018-08-06, 21 h local time (Sun at  $-46^\circ$ ), transparent air. Lines from N(E,S,W) to zenith shown (crosses each  $10^\circ$ ). Centered on Albireo ( $\beta$  Cygni),  $25^\circ$  to the right from N, at  $37^\circ$  height, near the centre of Summer Triangle. Map vertical size is  $50^\circ$ . *Jan Hollan, CzechGlobe*



Maps for Globe at Night latitude  $-30^\circ$ , 2018-08-06, 21 h local time (Sun at  $-46^\circ$ ), transparent air. Lines from N(E,S,W) to zenith shown (crosses each  $10^\circ$ ). Centered on Albireo ( $\beta$  Cygni),  $23^\circ$  to the right from N, at  $28^\circ$  height, near the centre of Summer Triangle. Map vertical size is  $50^\circ$ . *Jan Hollan, CzechGlobe*