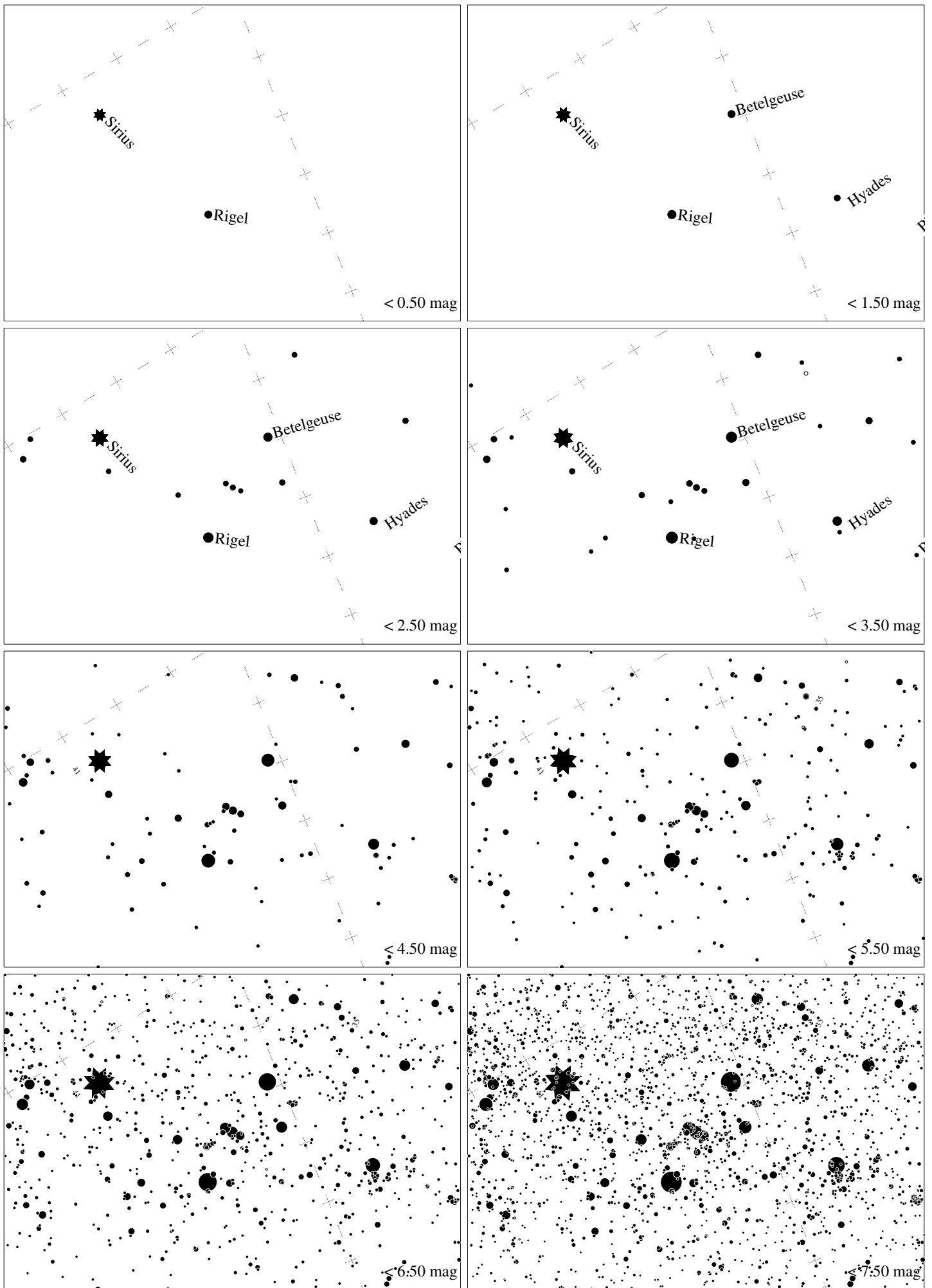


Maps for Globe at Night at latitude 10° , 2017-01-23, 21 h local time (Sun at -43°), transparent air. Lines from N(E,S,W) to zenith shown (crosses each 10°). Orion's belt is 28° to the left from S, at 77° height. Star clusters M 41 and M35 marked when appropriate. Map vertical size is 50° . *Jan Hollan, CzechGlobe*



Maps for Globe at Night at latitude 10° , 2017-02-22, 21 h local time (Sun at -42°), transparent air. Lines from N(E,S,W) to zenith shown (crosses each 10°). Orion's belt is 66° to the right from S, at 64° height. Star clusters M 41 and M35 marked when appropriate. Map vertical size is 50° . *Jan Hollan, CzechGlobe*