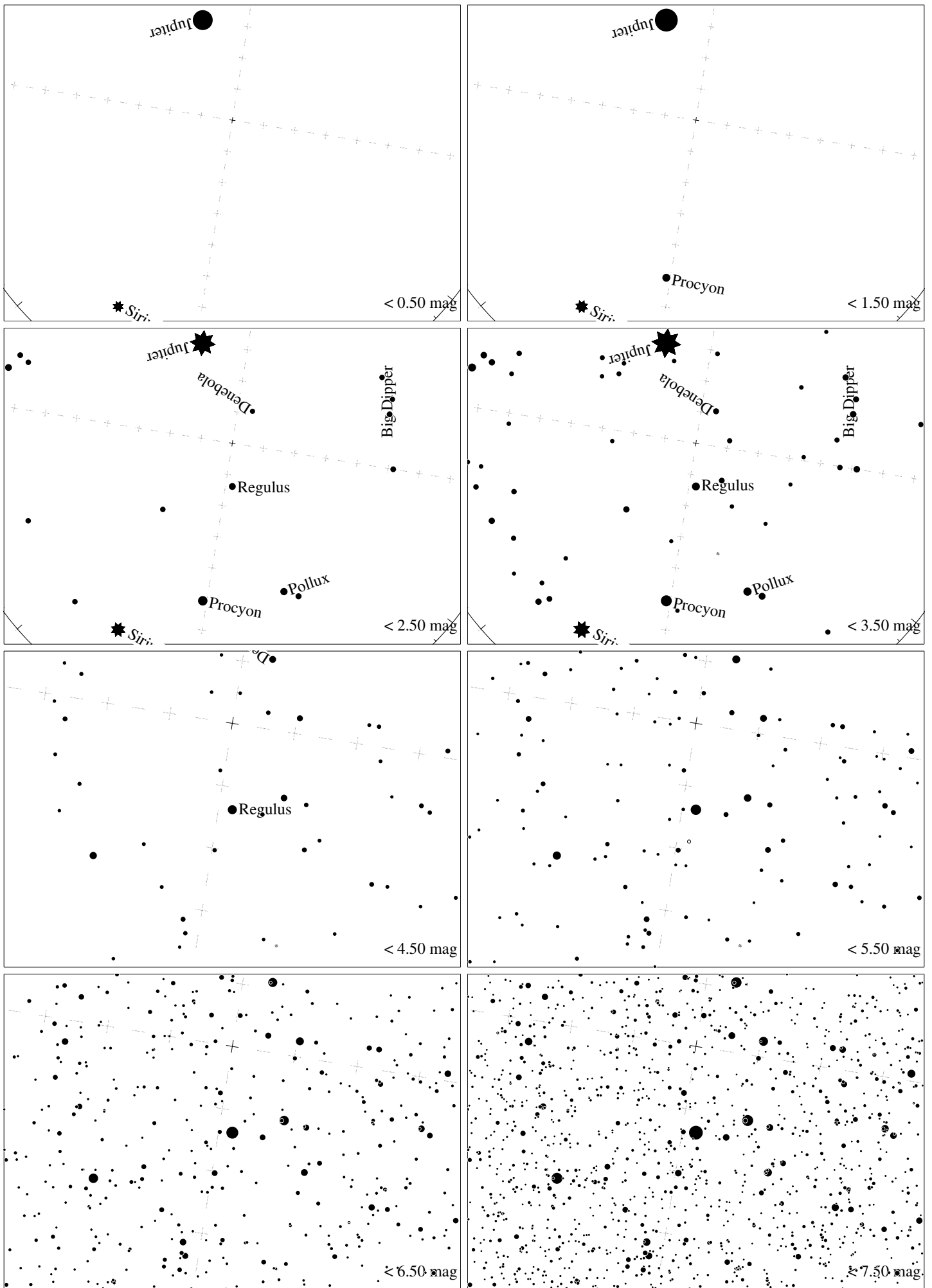
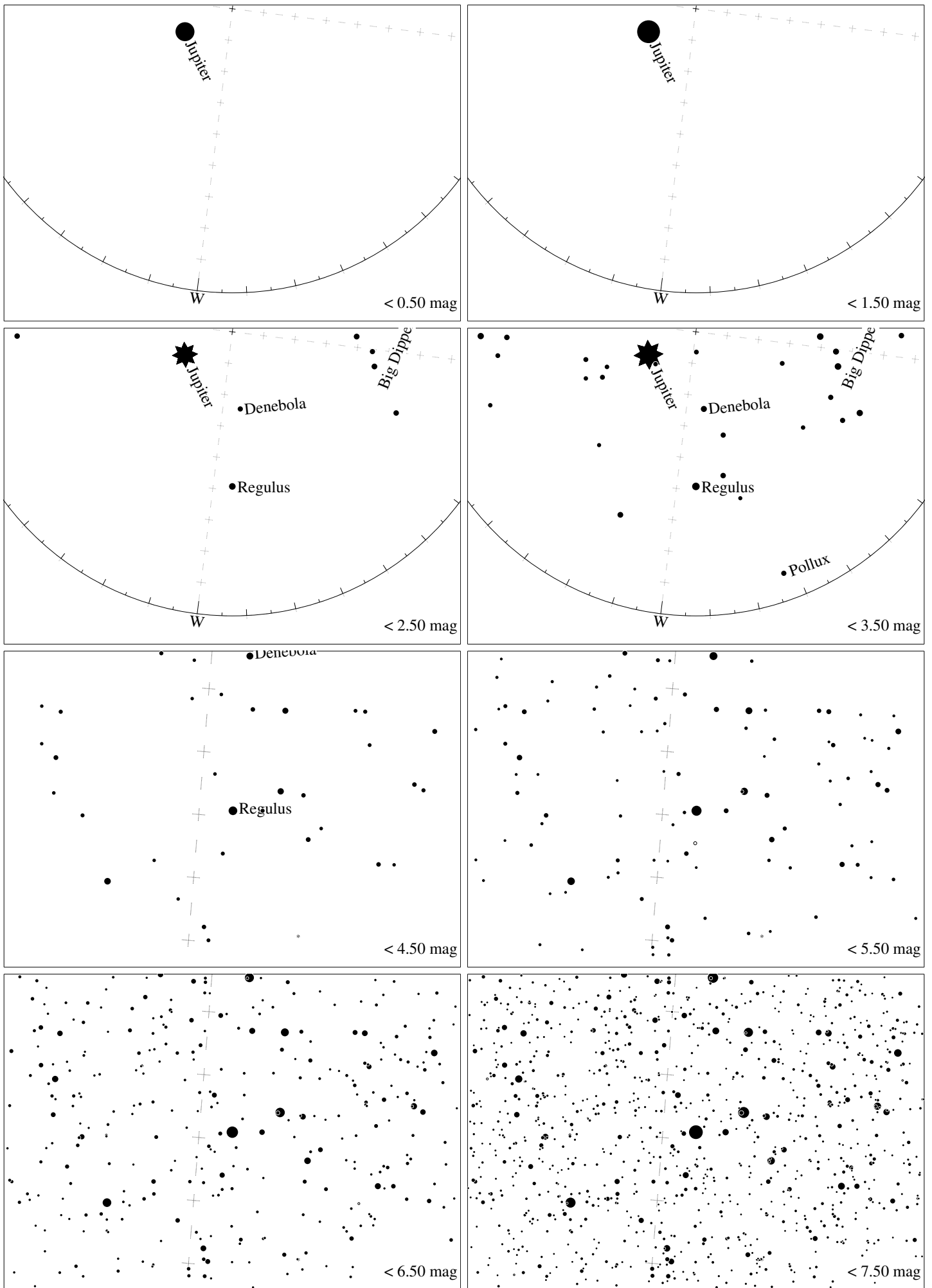


Maps for Globe at Night at latitude 10° , 2017-03-24, 21 h local time (Sun at -42°), transparent air. Lines from N(E,S,W) to zenith shown (crosses each 10°). Regulus (α Leonis) is 81° to the right from N, at 75° height. Detailed maps 50° vertically, the first four maps 100° . *Jan Hollan, CzechGlobe*



Maps for Globe at Night at latitude 10° , 2017-04-22, 21 h local time (Sun at -40°), transparent air. Lines from N(E,S,W) to zenith shown (crosses each 10°). Regulus (α Leonis) is 81° to the left from N, at 76° height. Detailed maps 50° vertically, the first four maps 100° . Jan Hollan, CzechGlobe



Maps for Globe at Night at latitude 10° , 2017-05-21, 21:30 local time (Sun at -43°), transparent air. Lines from N(E,S,W) to zenith shown (crosses each 10°). Regulus (α Leonis) is 83° to the left from N, at 41° height. Detailed maps 50° vertically, the first four maps 100° . *Jan Hollan, CzechGlobe*