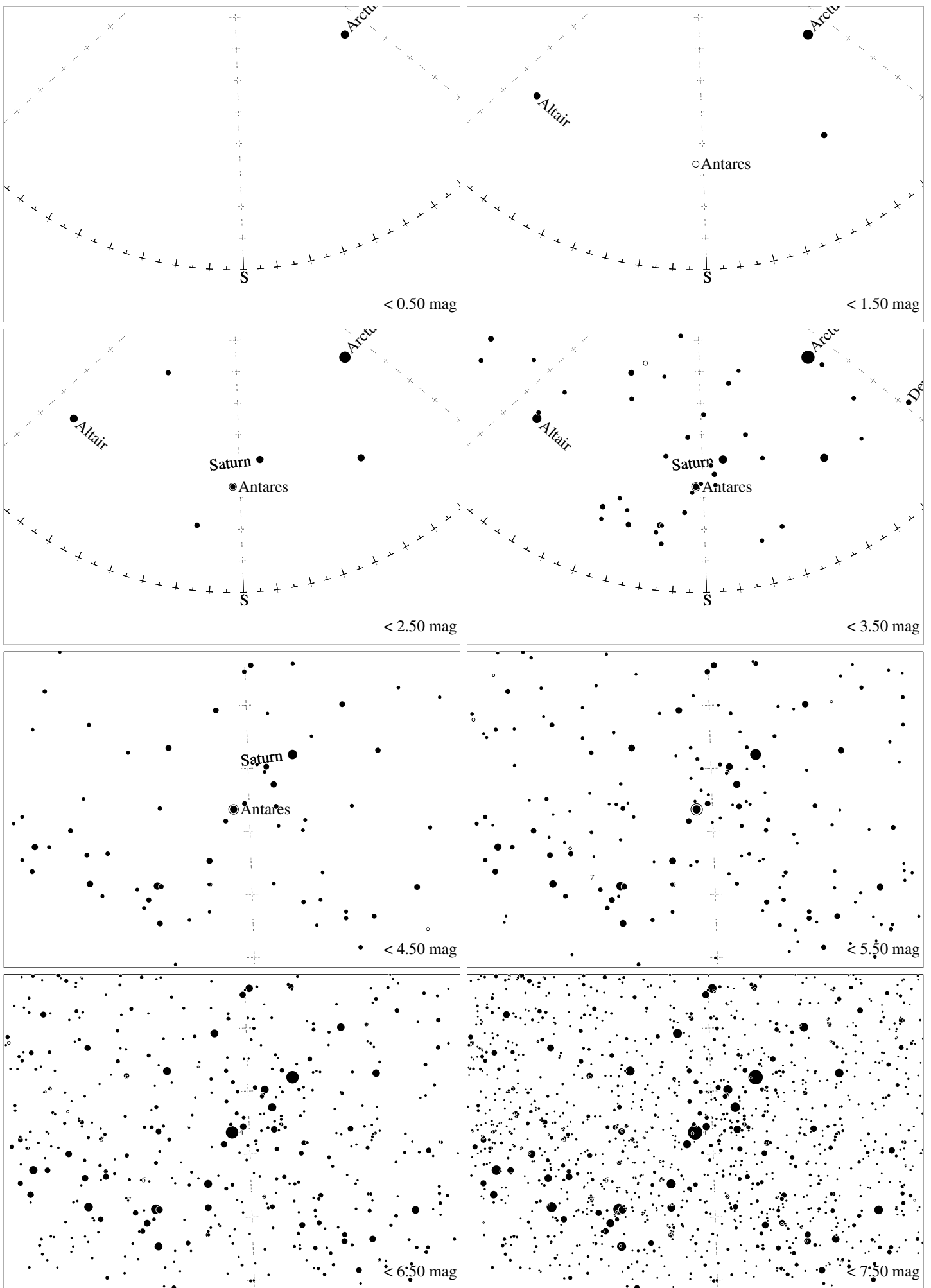


Maps for Globe at Night latitude 30° , 2015-06-12, 21 h local time (Sun at -22°), transparent air. Lines from N(E,S,W) to zenith shown (crosses each 10°). Centered on Antares (α Scorpii), which is 32° to the left from S, at 26° height. Detailed maps 50° vertically, the first four maps 100° . *Jan Hollan, CzechGlobe*



Maps for Globe at Night latitude 30° , 2015-07-11, 21 h local time (Sun at -22°), transparent air. Lines from N(E,S,W) to zenith shown (crosses each 10°). Centered on Antares (α Scorpii), which is 3° to the left from S, at 33° height. Detailed maps 50° vertically, the first four maps 100° . *Jan Hollan, CzechGlobe*