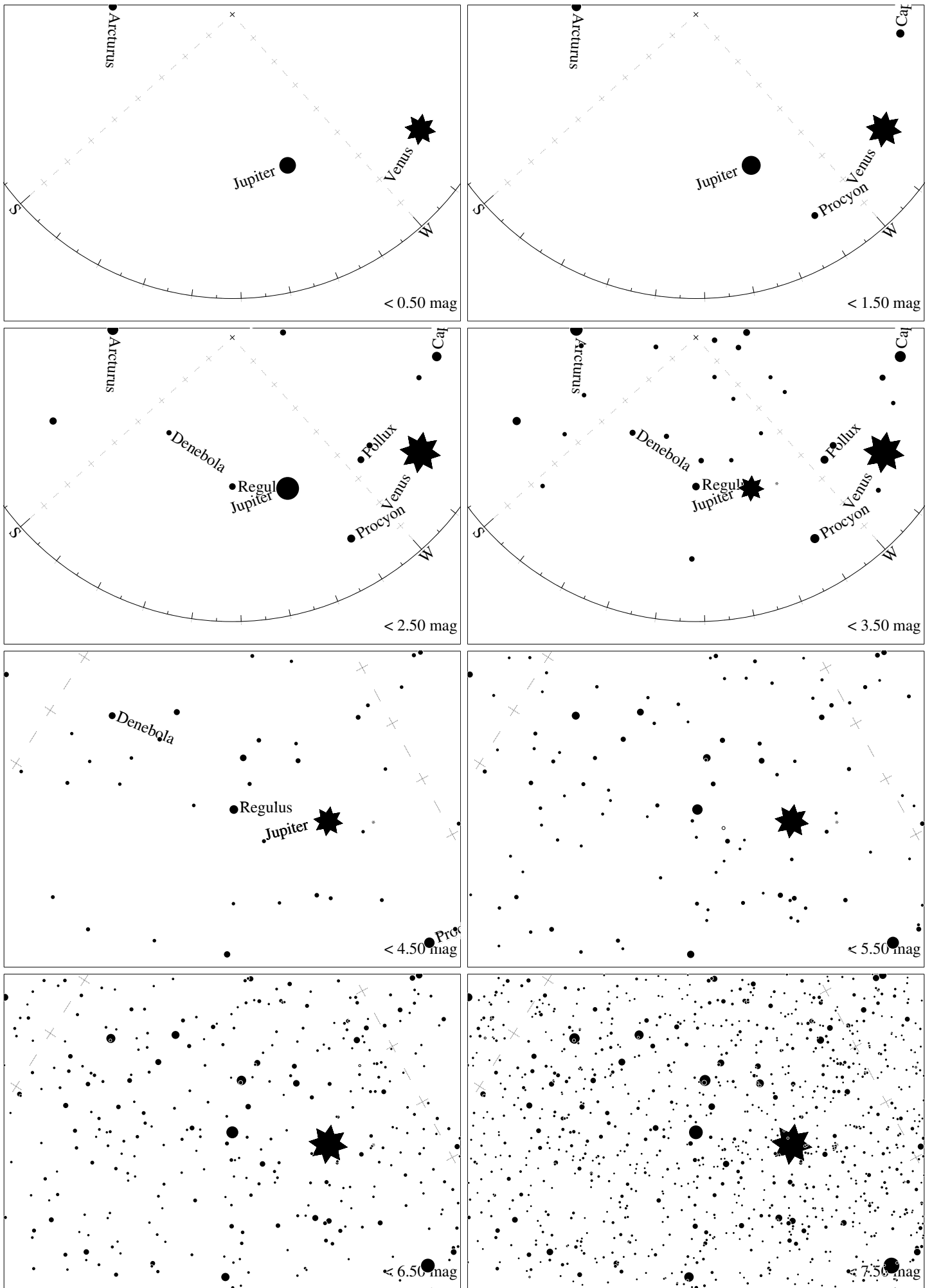


Maps for Globe at Night at latitude 50° , 2015-04-13, 21 h local time (Sun at -19°), transparent air. Lines from N(E,S,W) to zenith shown (crosses each 10°). Regulus (α Leonis) is 7° to the right from S, at 52° height. Detailed maps 50° vertically, the first four maps 100° . *Jan Hollan, CzechGlobe*



Maps for Globe at Night at latitude 50° , 2015-05-13, 21 h local time (Sun at -11°), transparent air. Lines from N(E,S,W) to zenith shown (crosses each 10°). Regulus (α Leonis) is 48° to the right from S, at 43° height. Detailed maps 50° vertically, the first four maps 100° . *Jan Hollan, CzechGlobe*