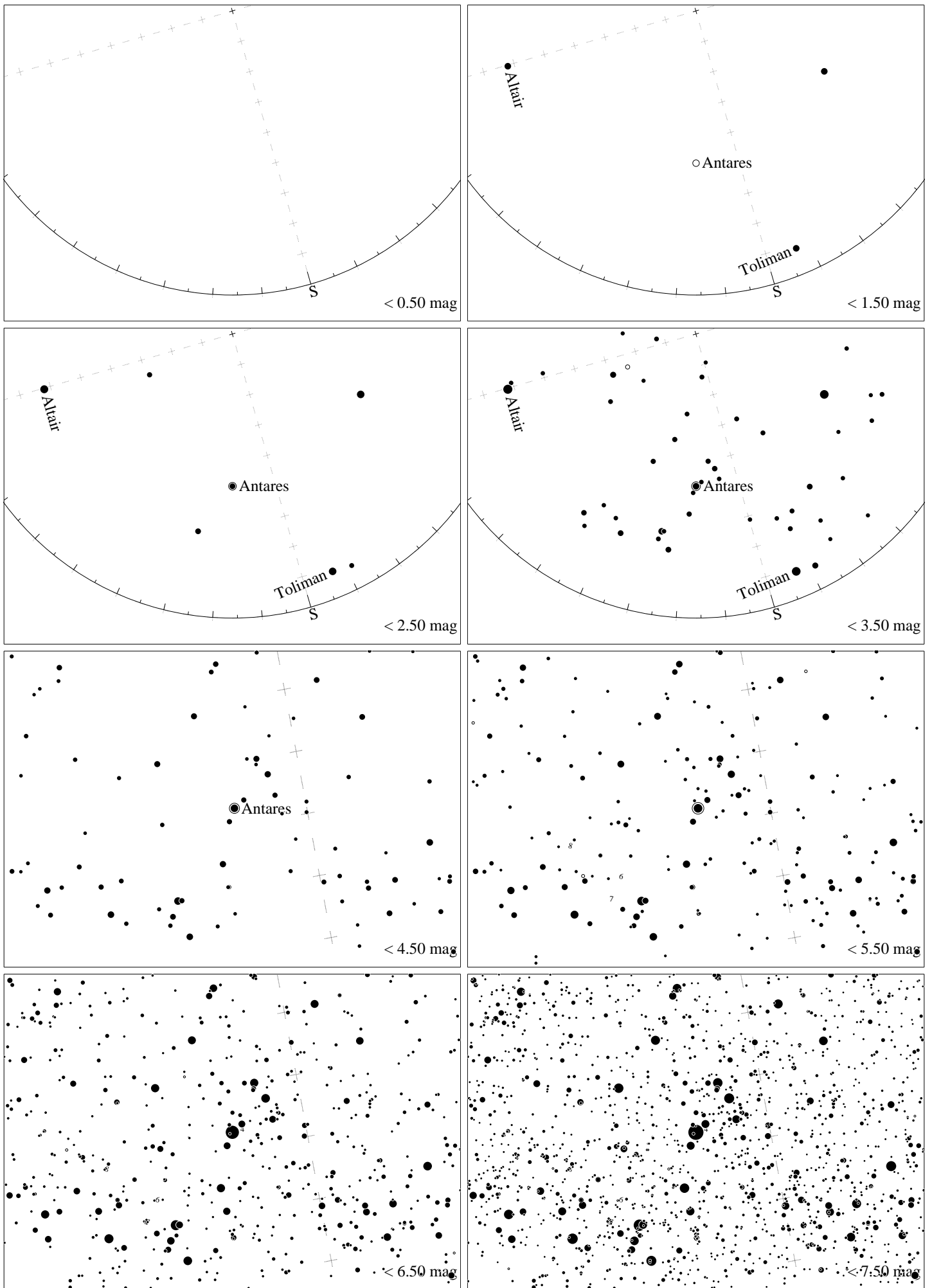
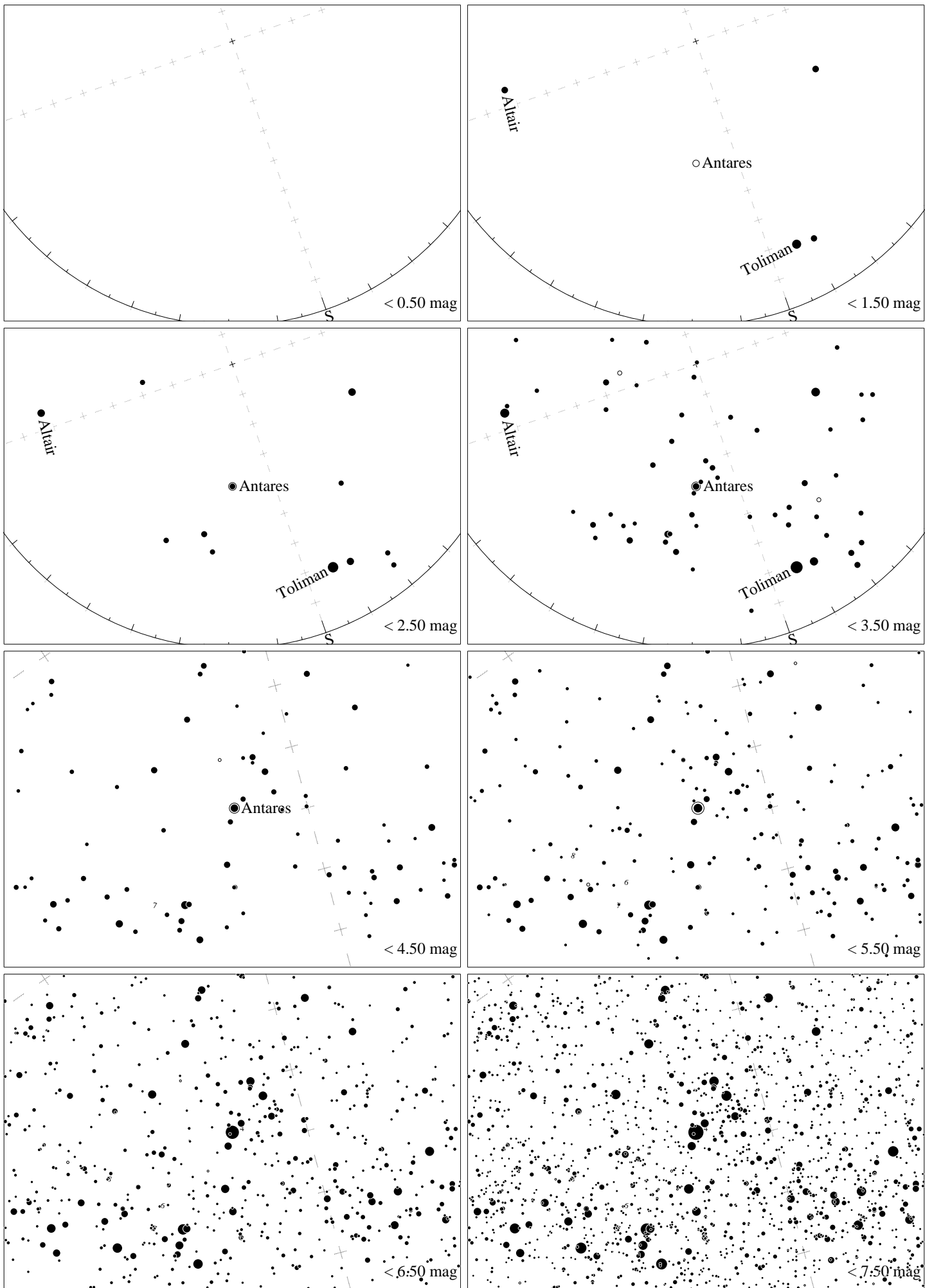


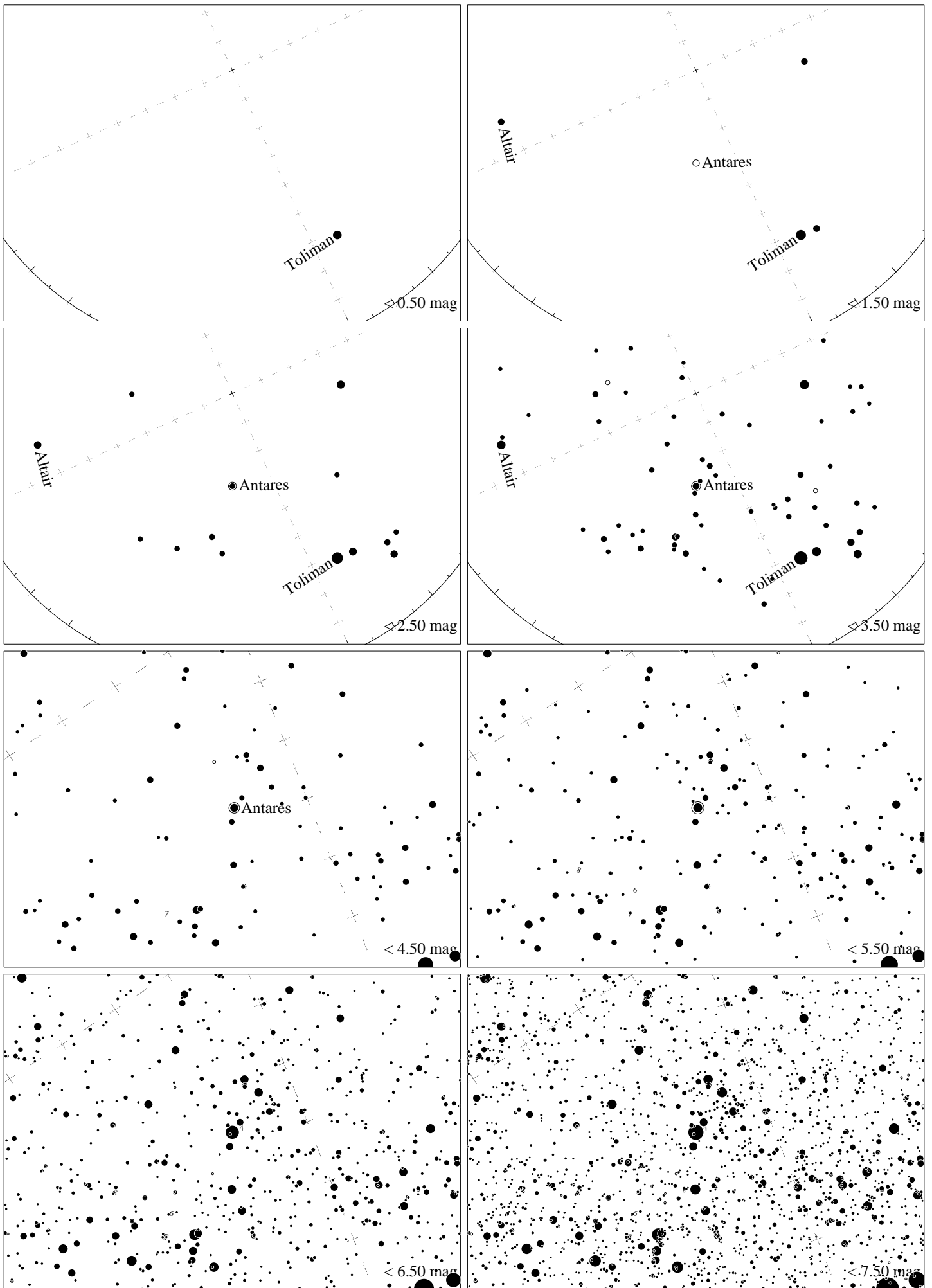
Maps for Globe at Night latitude 30° , 2024-06-30, 21 h local time (Sun at -21°), transparent air. Lines from N(E,S,W) to zenith shown (crosses each 10°). Centered on Antares (α Scorpii), which is 14° to the left from S, at 32° height. Detailed maps 50° vertically, the first four maps 100° . *Jan Hollan, CzechGlobe*



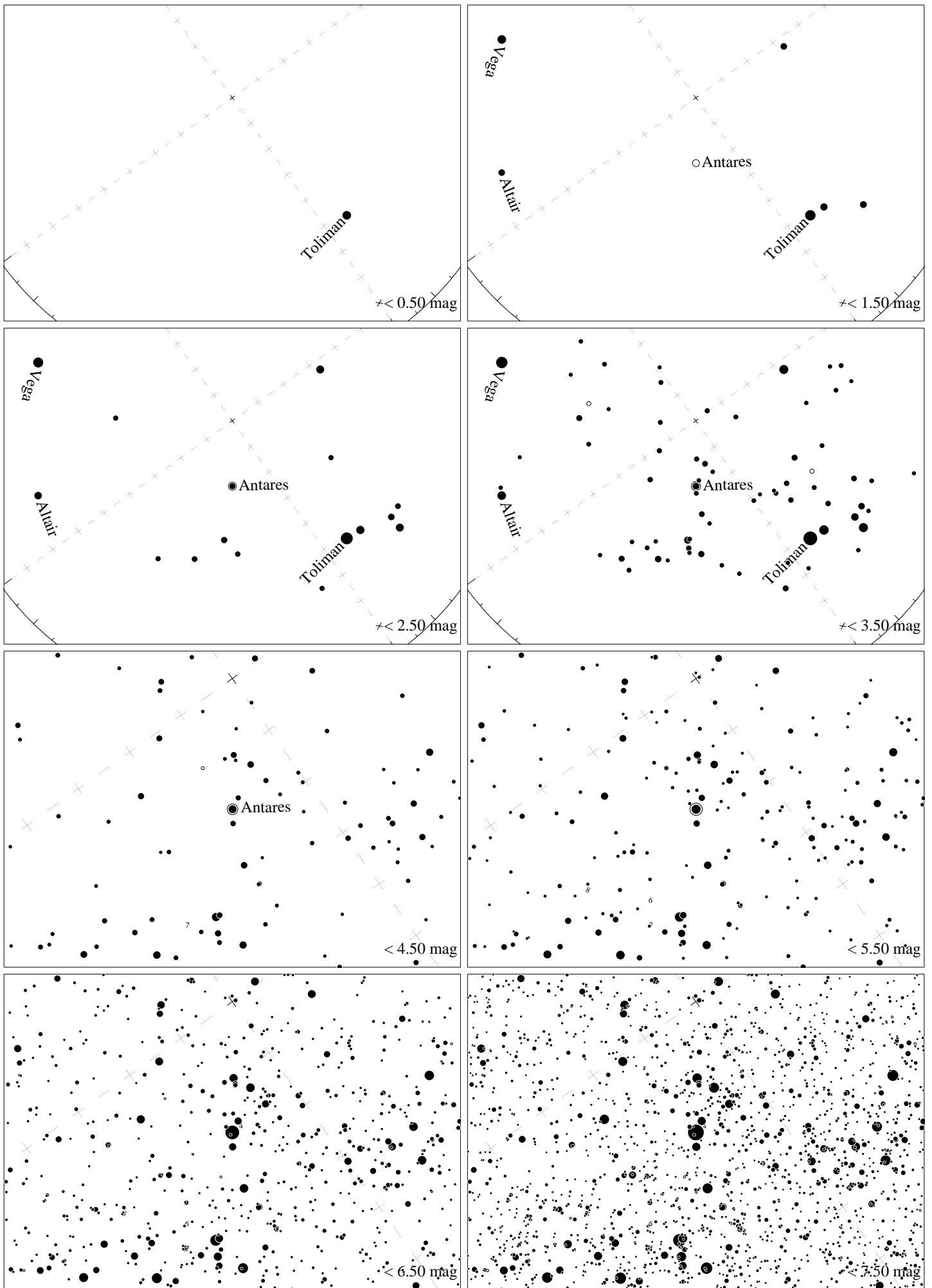
Maps for Globe at Night latitude 20° , 2024-06-30, 21 h local time (Sun at -28°), transparent air. Lines from N(E,S,W) to zenith shown (crosses each 10°). Centered on Antares (α Scorpii), which is 16° to the left from S, at 42° height. Detailed maps 50° vertically, the first four maps 100° . *Jan Hollan, CzechGlobe*



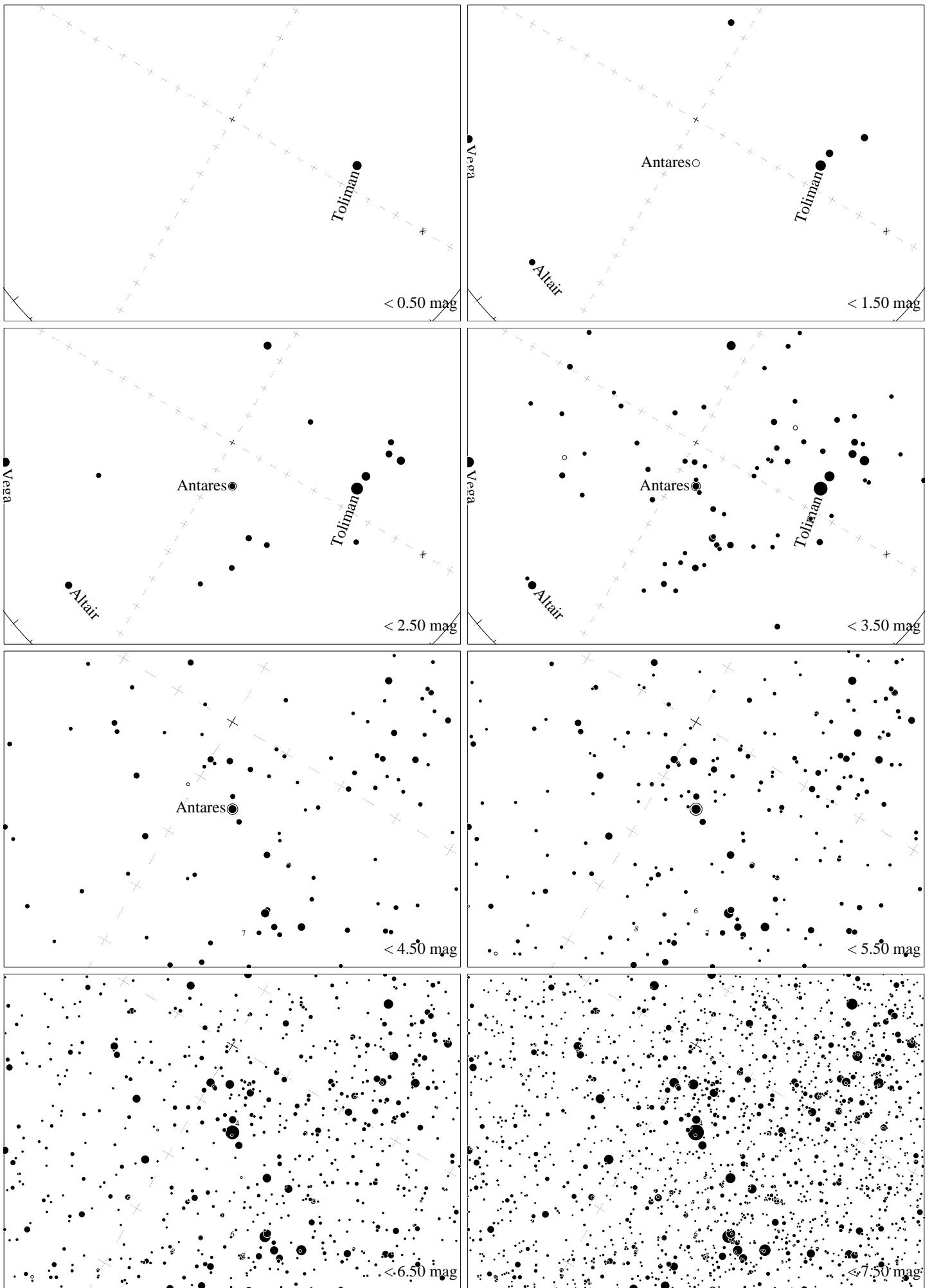
Maps for Globe at Night latitude 10° , 2024-06-30, 21 h local time (Sun at -34°), transparent air. Lines from N(E,S,W) to zenith shown (crosses each 10°). Centered on Antares (α Scorpii), which is 19° to the left from S, at 51° height. Detailed maps 50° vertically, the first four maps 100° . *Jan Hollan, CzechGlobe*



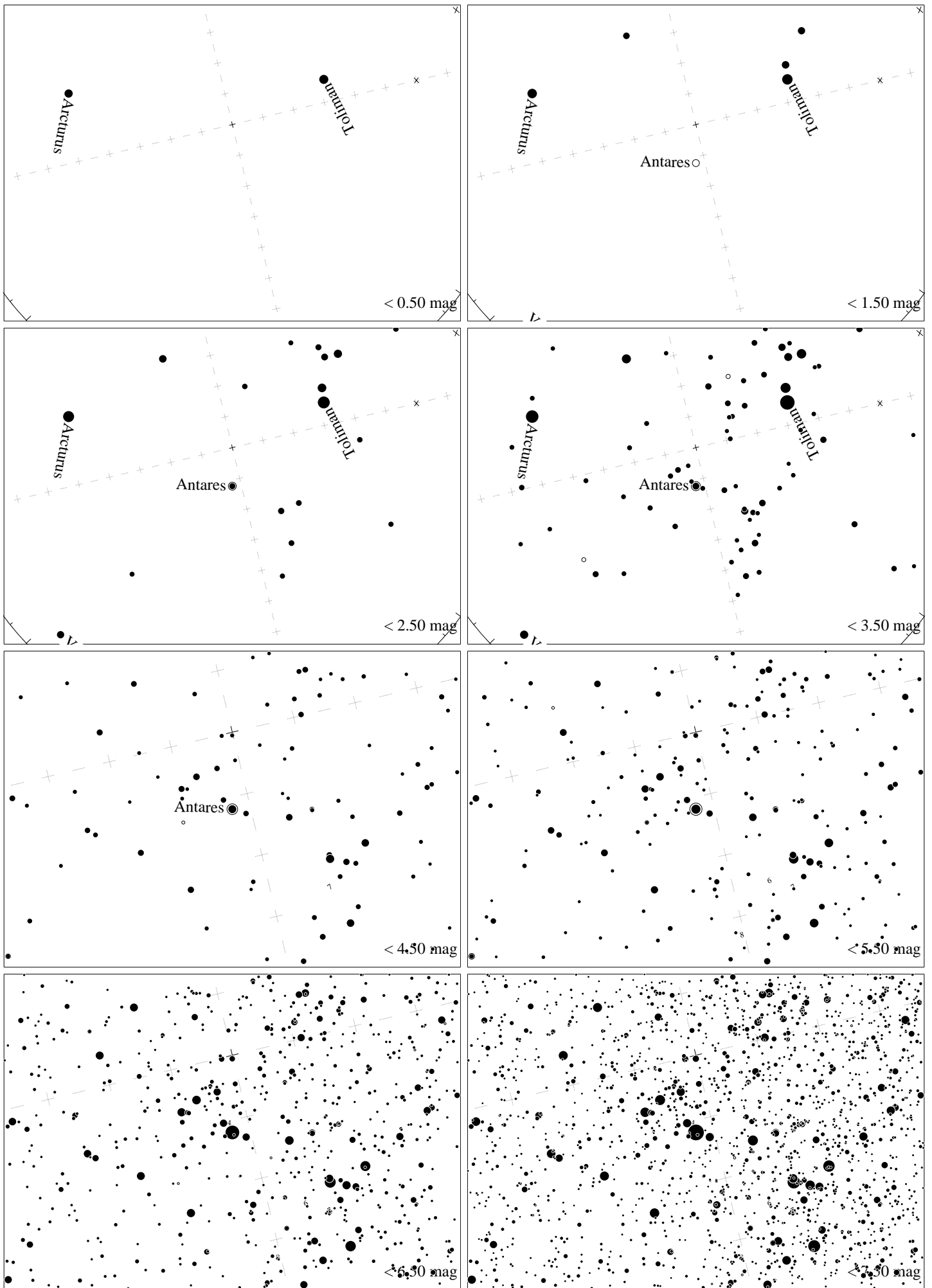
Maps for Globe at Night latitude 0° , 2024-06-30, 21 h local time (Sun at -40°), transparent air. Lines from N(E,S,W) to zenith shown (crosses each 10°). Centered on Antares (α Scorpii), which is 25° to the left from S, at 61° height. Detailed maps 50° vertically, the first four maps 100° . *Jan Hollan, CzechGlobe*



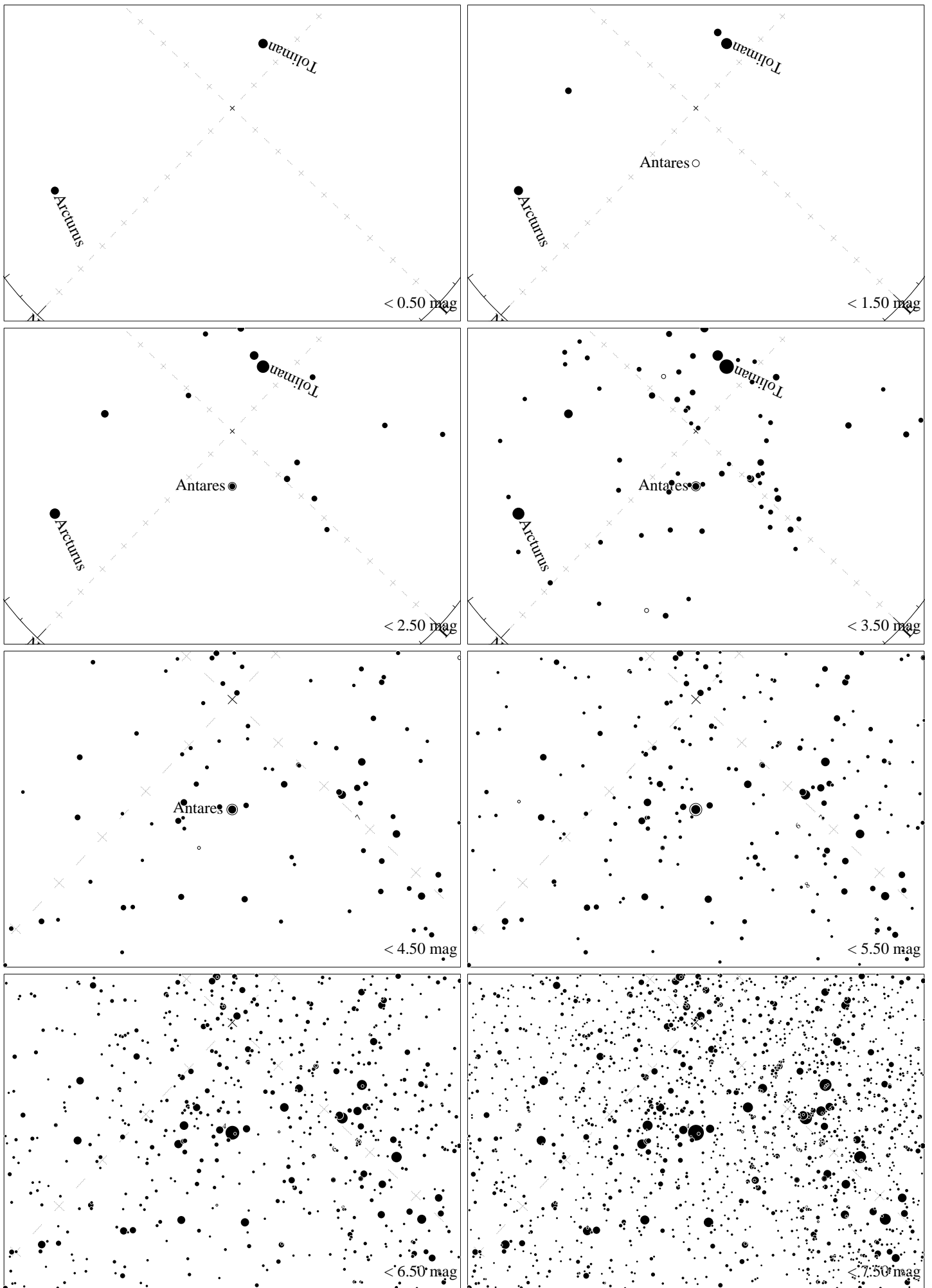
Maps for Globe at Night latitude -10° , 2024-06-30, 21 h local time (Sun at -44°), transparent air. Lines from N(E,S,W) to zenith shown (crosses each 10°). Centered on Antares (α Scorpii), which is 36° to the left from S, at 69° height. Detailed maps 50° vertically, the first four maps 100° . *Jan Hollan, CzechGlobe*



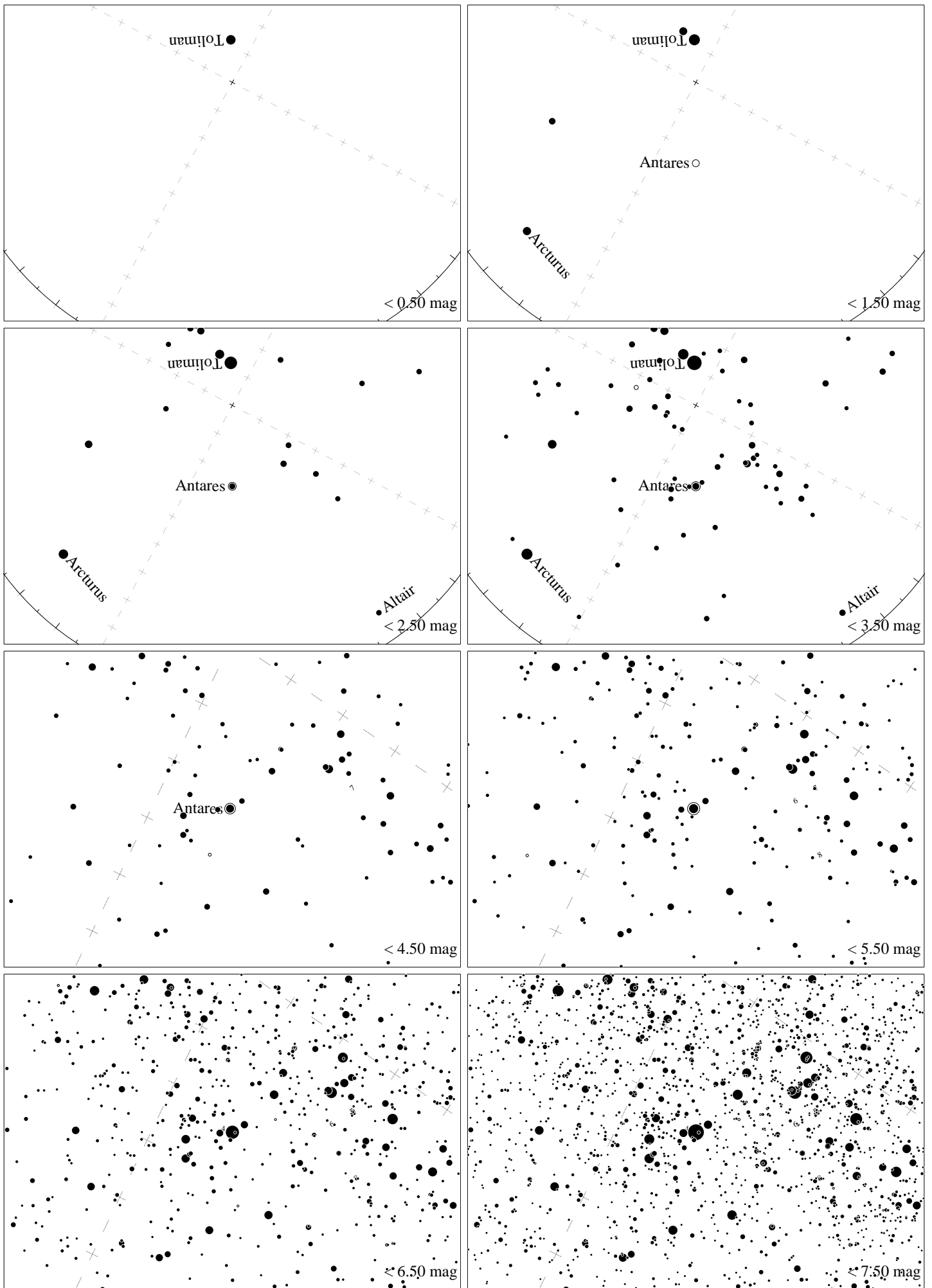
Maps for Globe at Night latitude -20° , 2024-06-30, 21 h local time (Sun at -47°), transparent air. Lines from N(E,S,W) to zenith shown (crosses each 10°). Centered on Antares (α Scorpii), which is 60° to the left from S, at 76° height. Detailed maps 50° vertically, the first four maps 100° . *Jan Hollan, CzechGlobe*



Maps for Globe at Night latitude -30° , 2024-06-30, 21 h local time (Sun at -49°), transparent air. Lines from N(E,S,W) to zenith shown (crosses each 10°). Centered on Antares (α Scorpii), which is 76° to the right from N, at 78° height. Detailed maps 50° vertically, the first four maps 100° . *Jan Hollan, CzechGlobe*



Maps for Globe at Night latitude -40° , 2024-06-30, 21 h local time (Sun at -48°), transparent air. Lines from N(E,S,W) to zenith shown (crosses each 10°). Centered on Antares (α Scorpii), which is 43° to the right from N, at 73° height. Detailed maps 50° vertically, the first four maps 100° . *Jan Hollan, CzechGlobe*



Maps for Globe at Night latitude -50° , 2024-06-30, 21 h local time (Sun at -45°), transparent air. Lines from N(E,S,W) to zenith shown (crosses each 10°). Centered on Antares (α Scorpii), which is 28° to the right from N, at 64° height. Detailed maps 50° vertically, the first four maps 100° . *Jan Hollan, CzechGlobe*