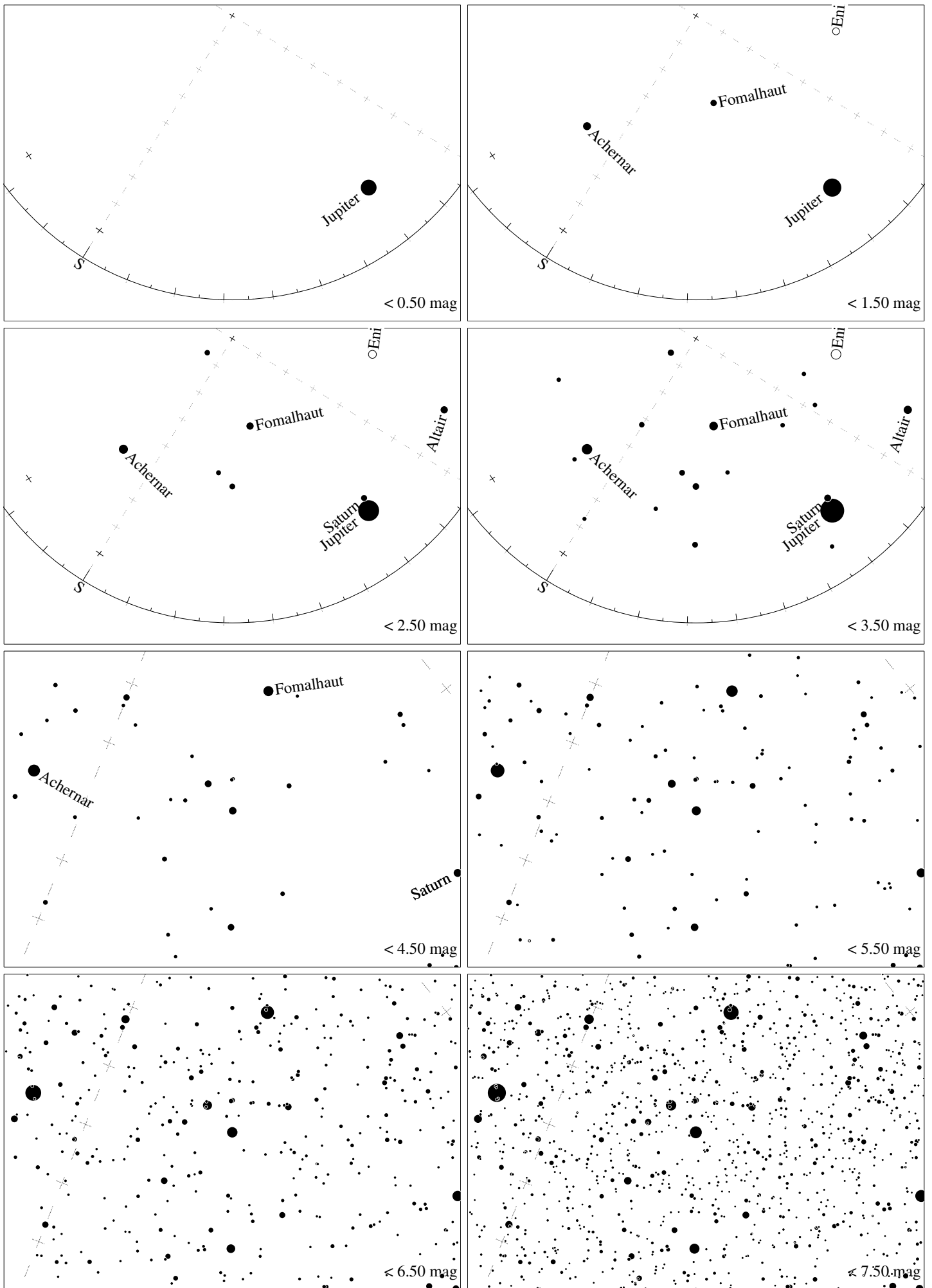
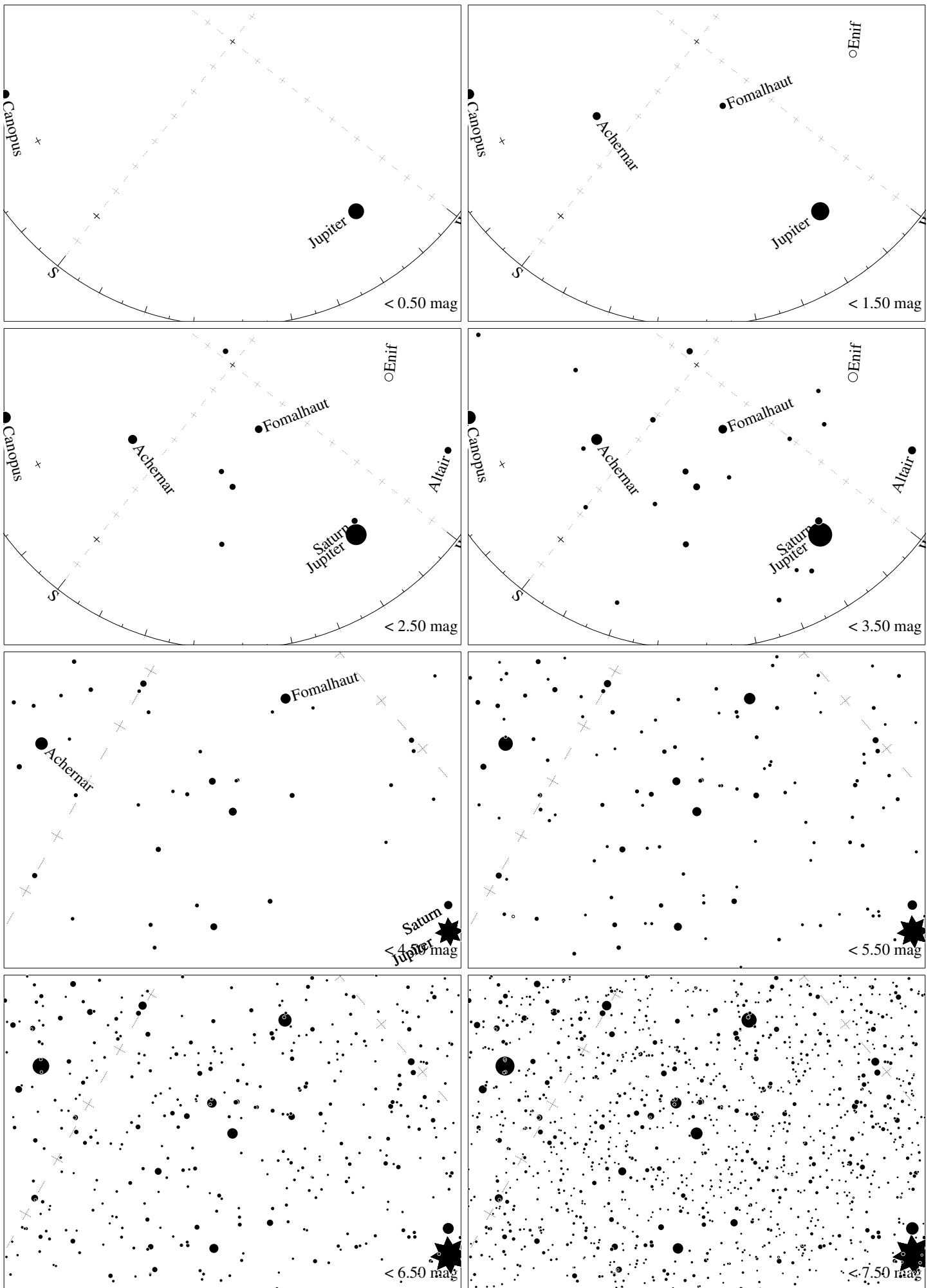


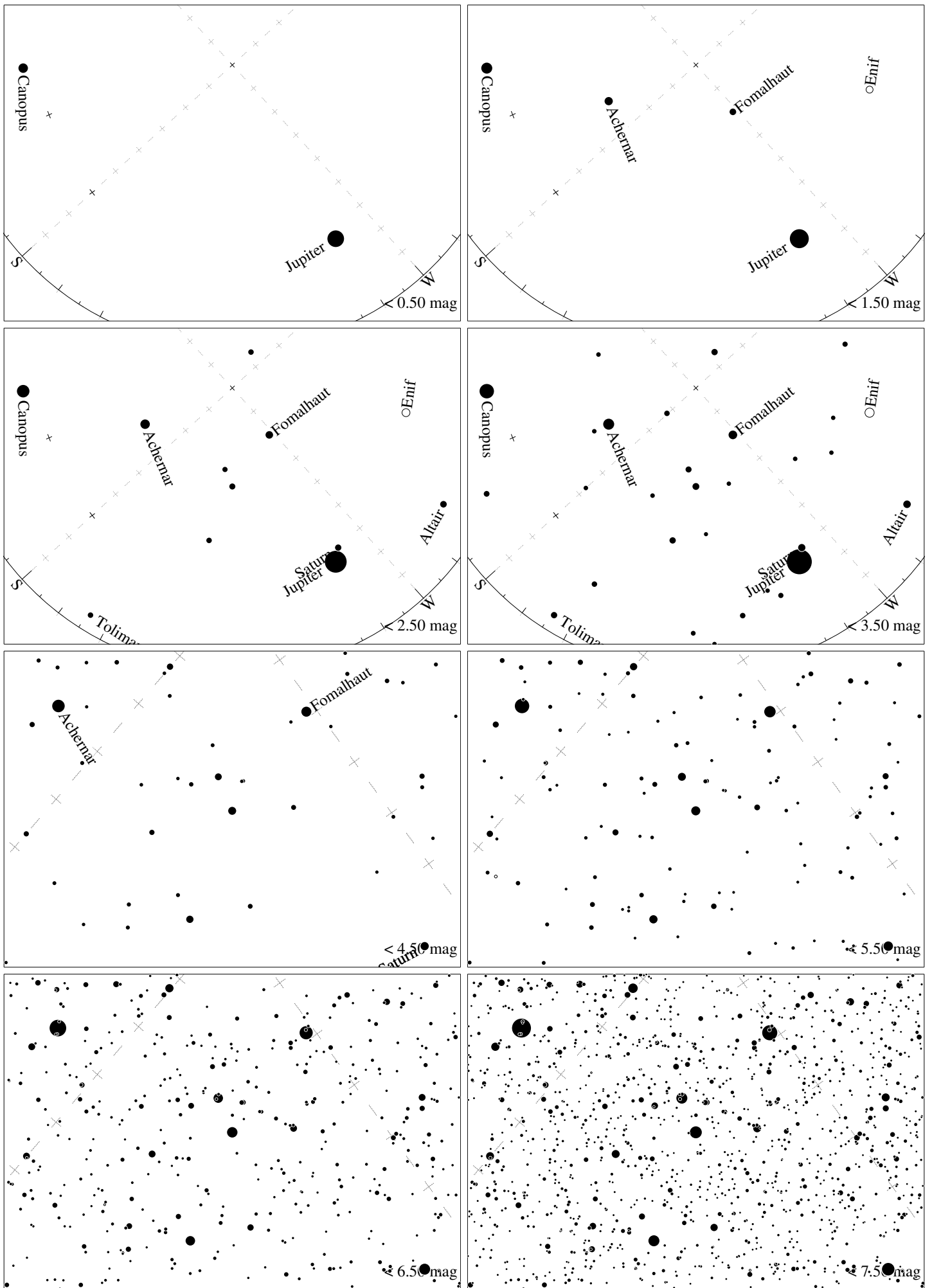
Maps for Globe at Night latitude 0°, 2020-11-11, 21:30 h local time (Sun at -46°), transparent air. Lines from N(E,S,W) to zenith shown (crosses each 10°). Centered on Altair (α Gruis), which is 28° to the right from S, at 35° height. Detailed maps 50° vertically, the first four maps 100° . *Jan Hollan, CzechGlobe*



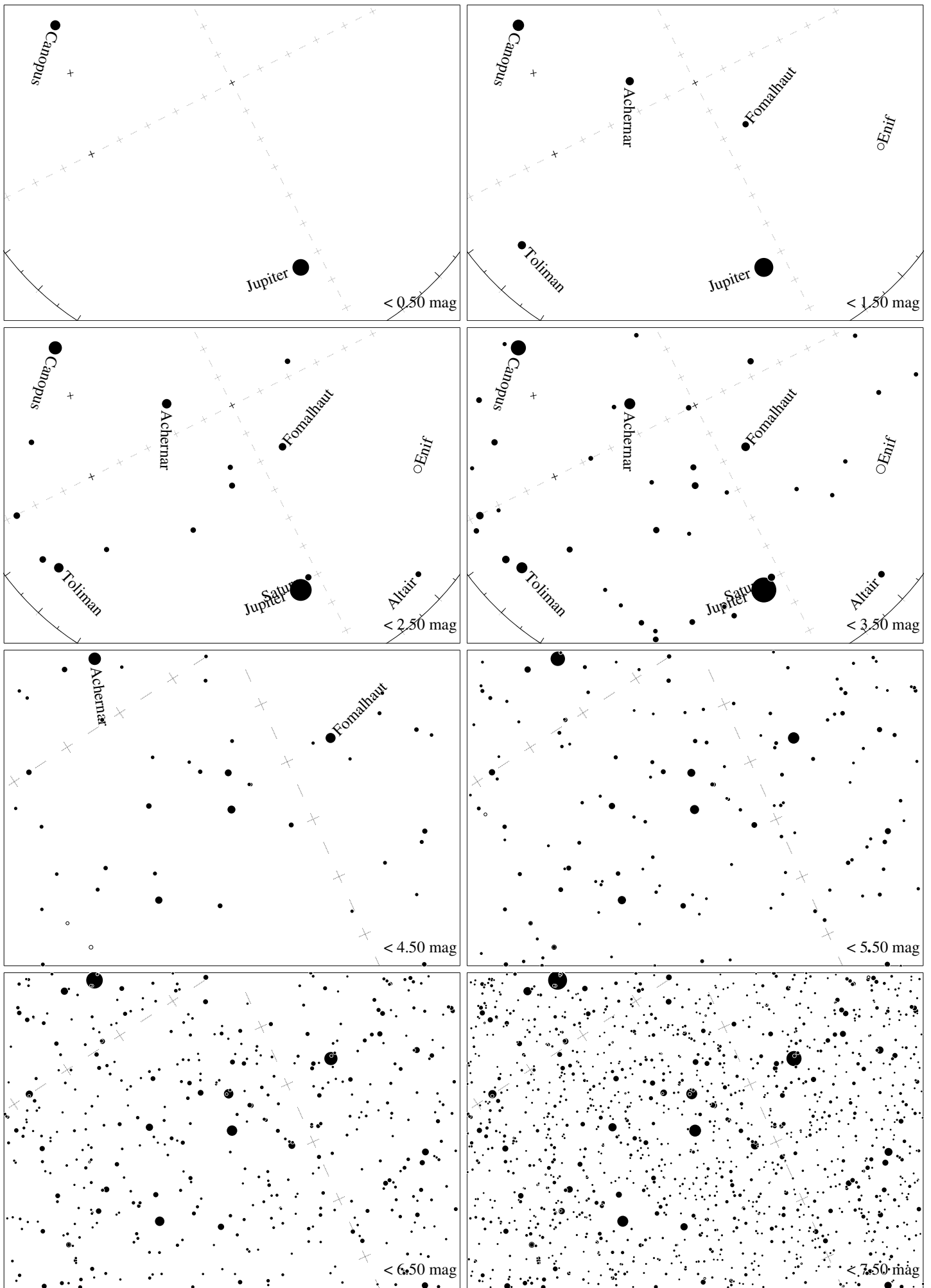
Maps for Globe at Night latitude -10° , 2020-11-11, 21:30 h local time (Sun at -41°), transparent air. Lines from N(E,S,W) to zenith shown (crosses each 10°). Centered on Alnair (α Gruis), which is 32° to the right from S, at 43° height. Detailed maps 50° vertically, the first four maps 100° . *Jan Hollan, CzechGlobe*



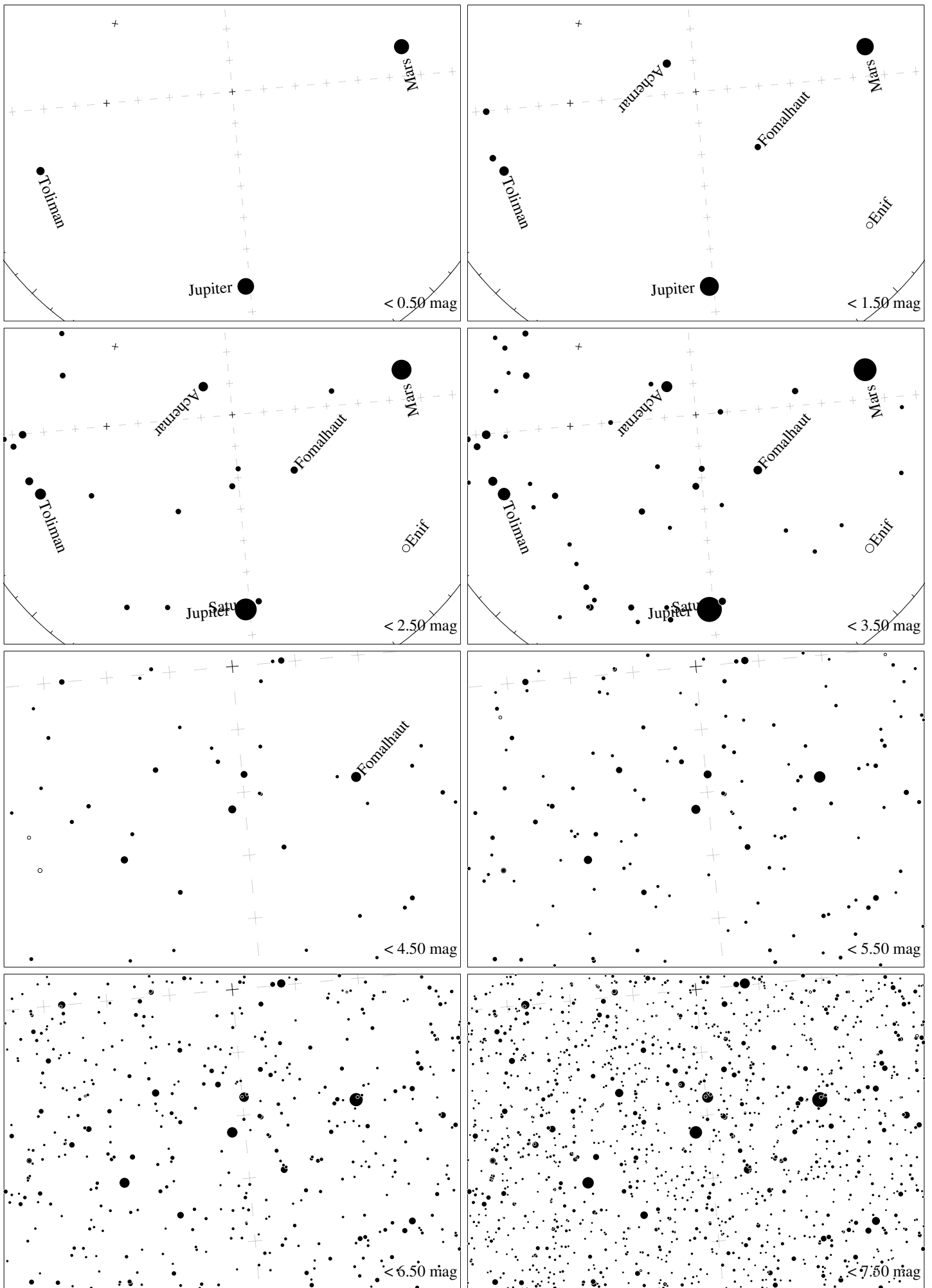
Maps for Globe at Night latitude -20° , 2020-11-11, 21:30 h local time (Sun at -35°), transparent air. Lines from N(E,S,W) to zenith shown (crosses each 10°). Centered on Alnair (α Gruis), which is 38° to the right from S, at 51° height. Detailed maps 50° vertically, the first four maps 100° . *Jan Hollan, CzechGlobe*



Maps for Globe at Night latitude -30° , 2020-11-11, 21:30 h local time (Sun at -28°), transparent air. Lines from N(E,S,W) to zenith shown (crosses each 10°). Centered on Alnair (α Gruis), which is 48° to the right from S, at 59° height. Detailed maps 50° vertically, the first four maps 100° . *Jan Hollan, CzechGlobe*



Maps for Globe at Night latitude -40° , 2020-11-11, 21:30 h local time (Sun at -21°), transparent air. Lines from N(E,S,W) to zenith shown (crosses each 10°). Centered on Alnair (α Crux), which is 63° to the right from S, at 65° height. Detailed maps 50° vertically, the first four maps 100° . Jan Hollan, CzechGlobe



Maps for Globe at Night latitude -50° , 2020-11-11, 21:30 h local time (Sun at -13°), transparent air. Lines from N(E,S,W) to zenith shown (crosses each 10°). Centered on Alnair (α Gruis), which is 85° to the right from S, at 67° height. Detailed maps 50° vertically, the first four maps 100° . *Jan Hollan, CzechGlobe*