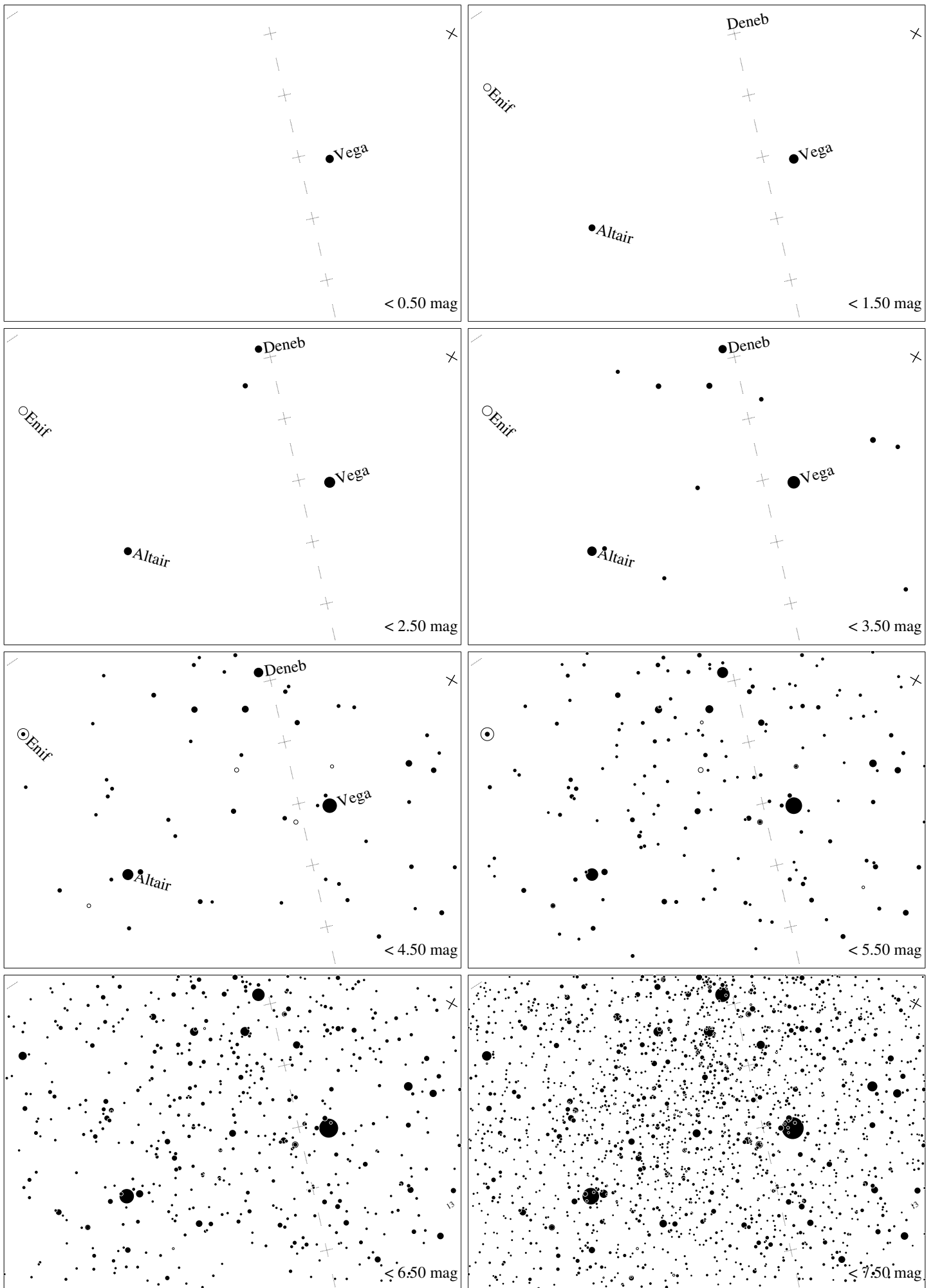
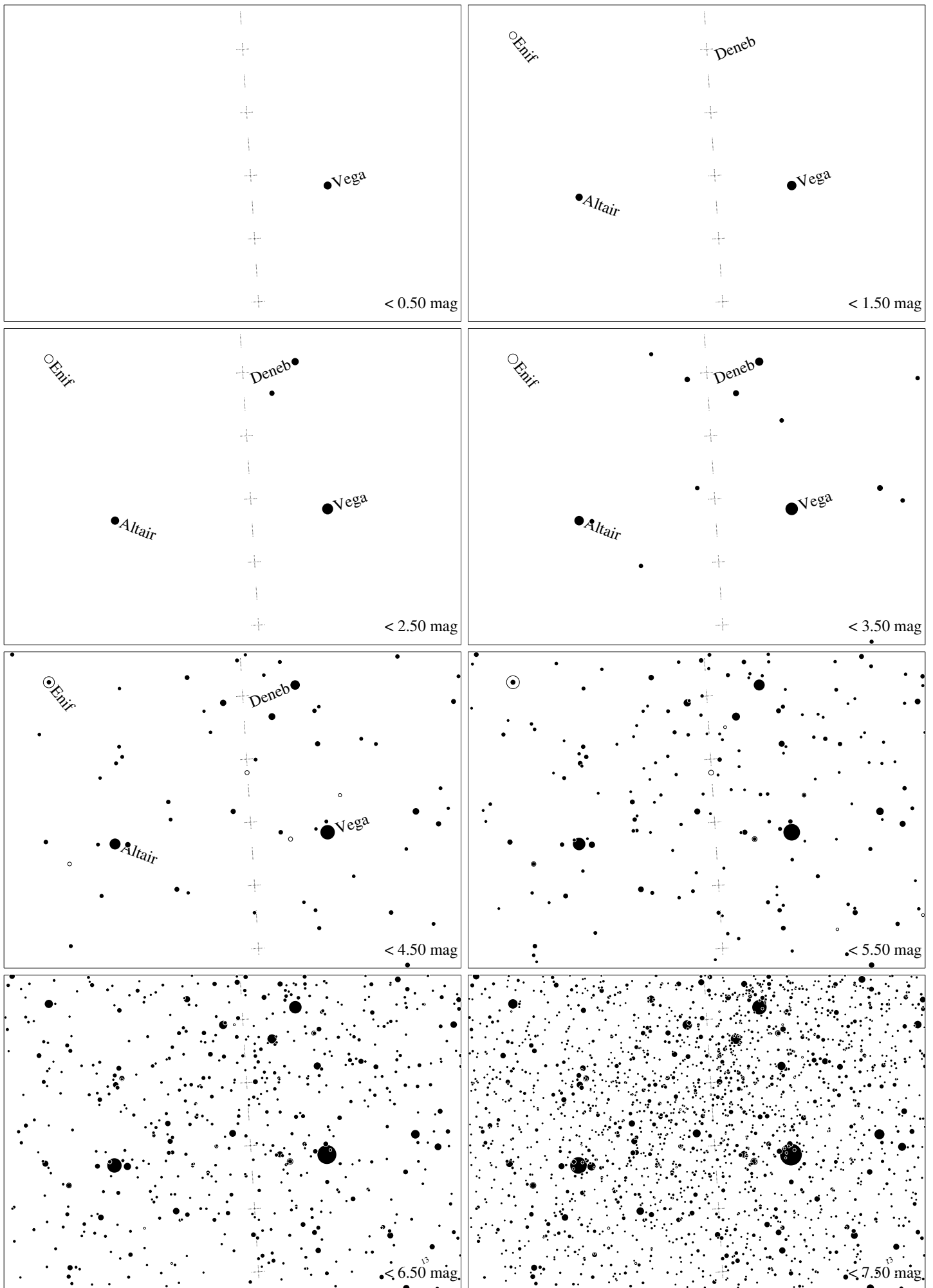


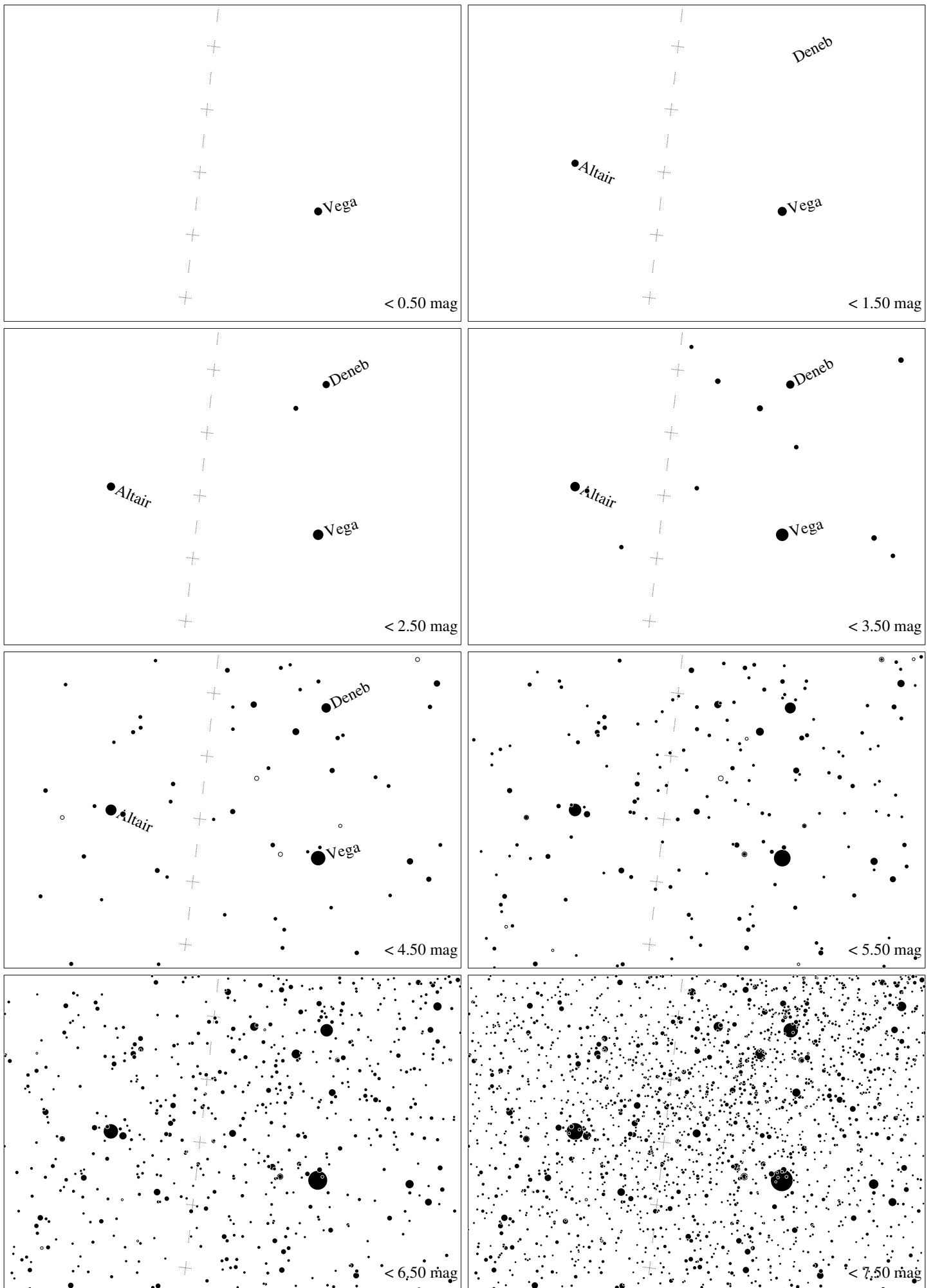
Maps for Globe at Night latitude 60° , 2020-10-12, 21 h local time (Sun at -29°), transparent air. Lines from N(E,S,W) to zenith shown (crosses each 10°). Centered on Albireo (β Cygni), 63° to the right from S, at 46° height, near the centre of Summer Triangle. Map vertical size is 50° . *Jan Hollan, CzechGlobe*



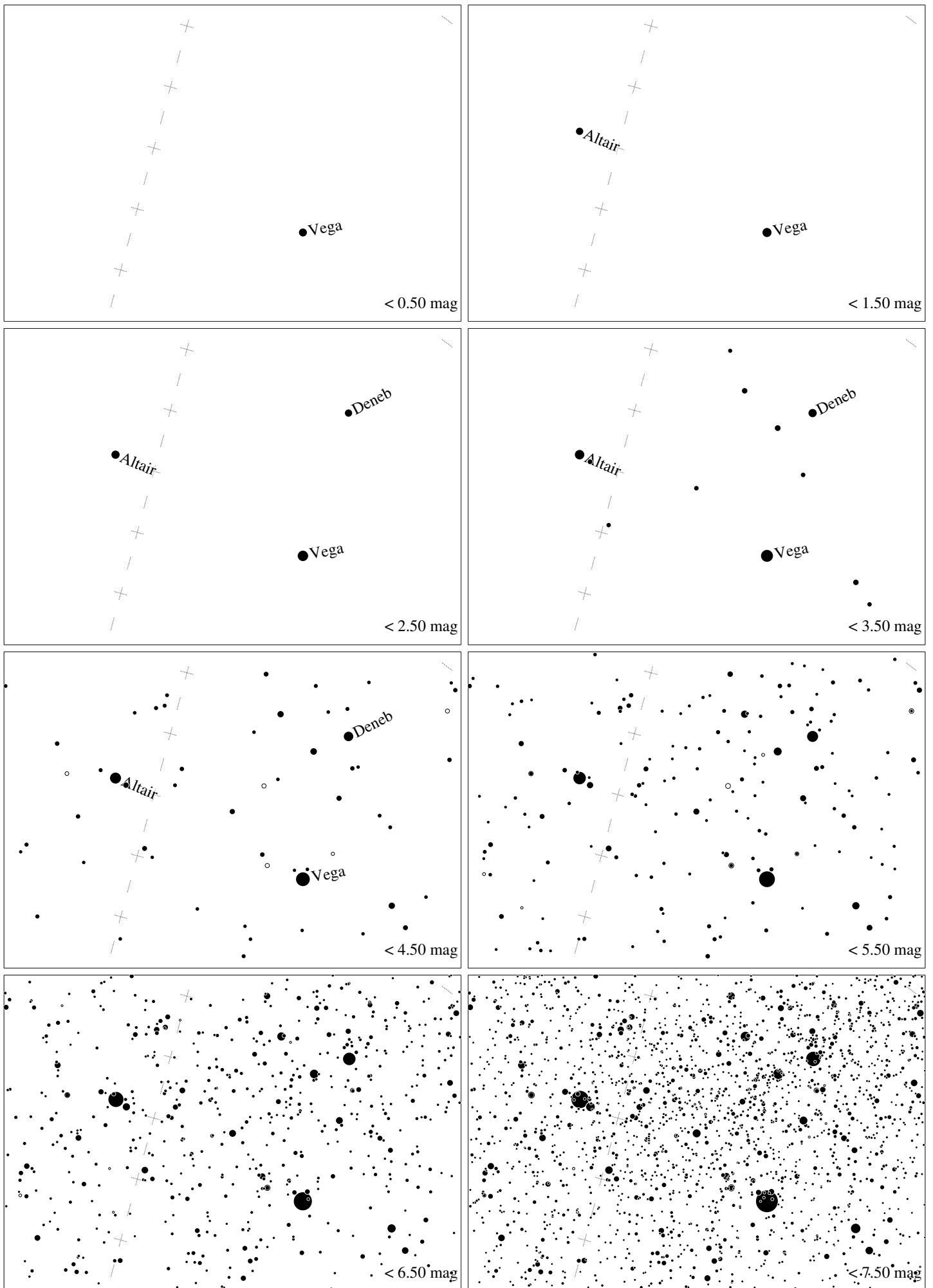
Maps for Globe at Night latitude 50° , 2020-10-12, 21 h local time (Sun at -36°), transparent air. Lines from N(E,S,W) to zenith shown (crosses each 10°). Centered on Albireo (β Cygni), 73° to the right from S, at 50° height, near the centre of Summer Triangle. Map vertical size is 50° . *Jan Hollan, CzechGlobe*



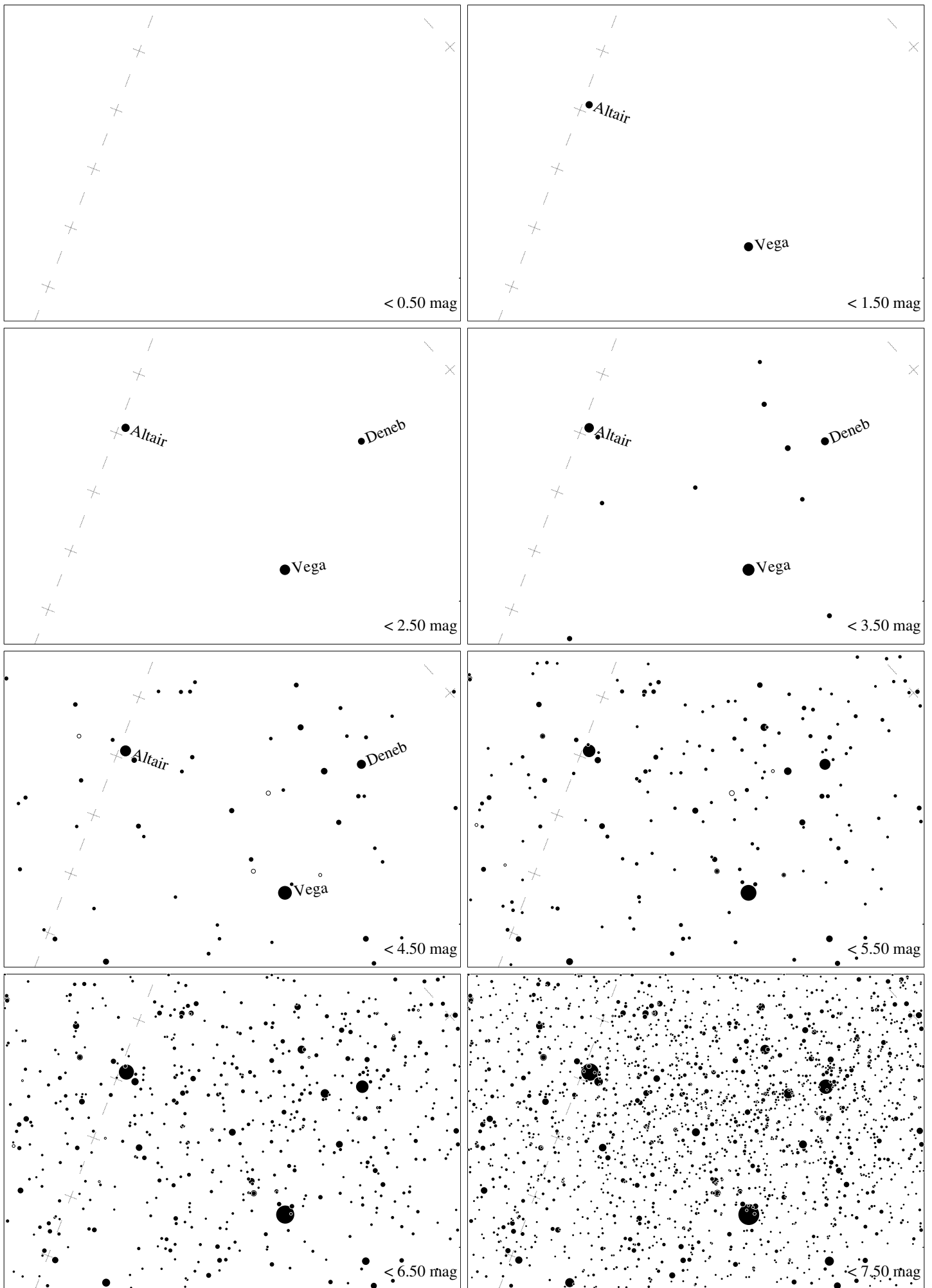
Maps for Globe at Night latitude 40° , 2020-10-12, 21 h local time (Sun at -41°), transparent air. Lines from N(E,S,W) to zenith shown (crosses each 10°). Centered on Albireo (β Cygni), 85° to the right from S, at 52° height, near the centre of Summer Triangle. Map vertical size is 50° . *Jan Hollan, CzechGlobe*



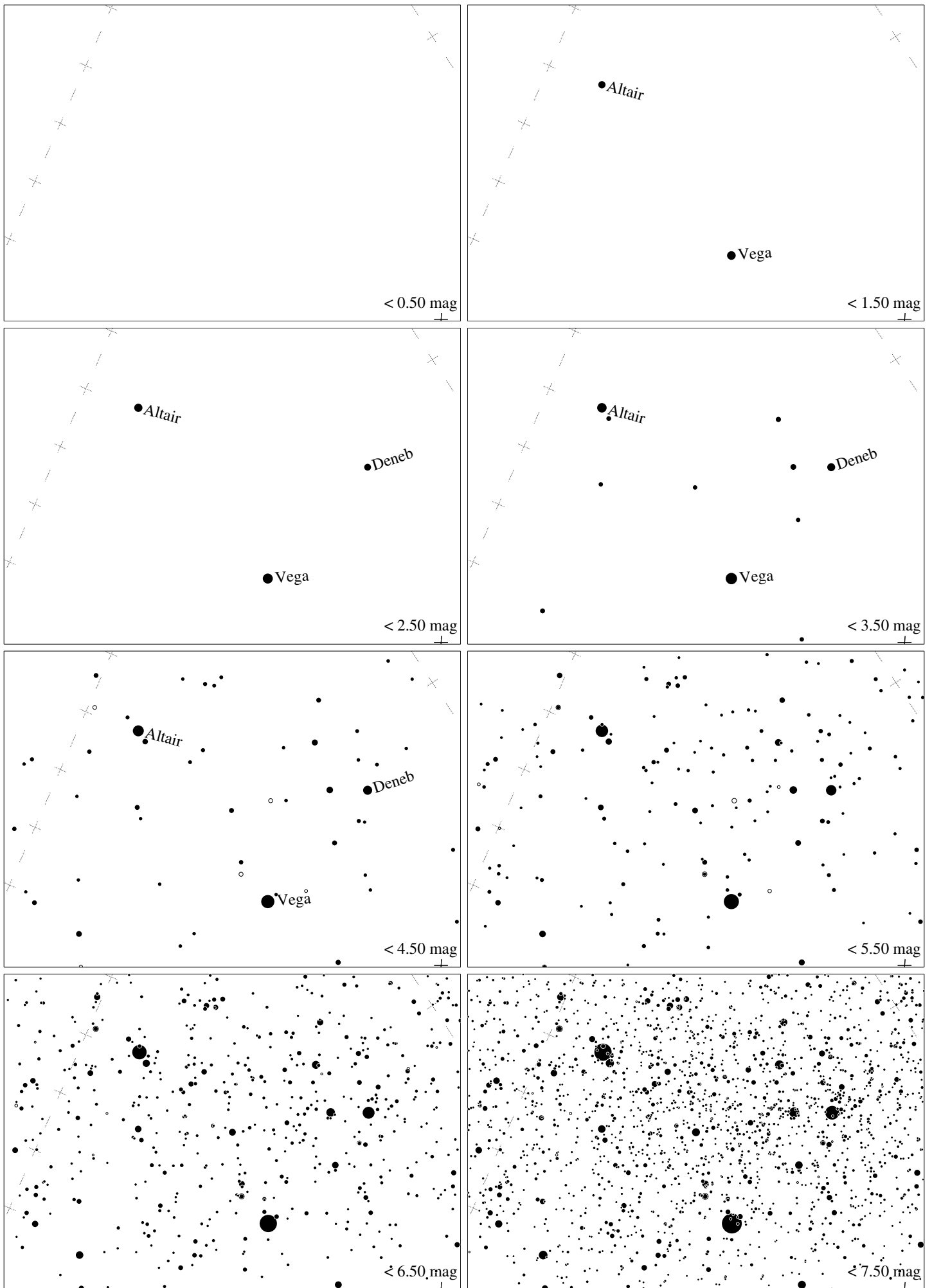
Maps for Globe at Night latitude 30° , 2020-10-12, 21 h local time (Sun at -45°), transparent air. Lines from N(E,S,W) to zenith shown (crosses each 10°). Centered on Albireo (β Cygni), 82° to the left from N, at 52° height, near the centre of Summer Triangle. Map vertical size is 50° . *Jan Hollan, CzechGlobe*



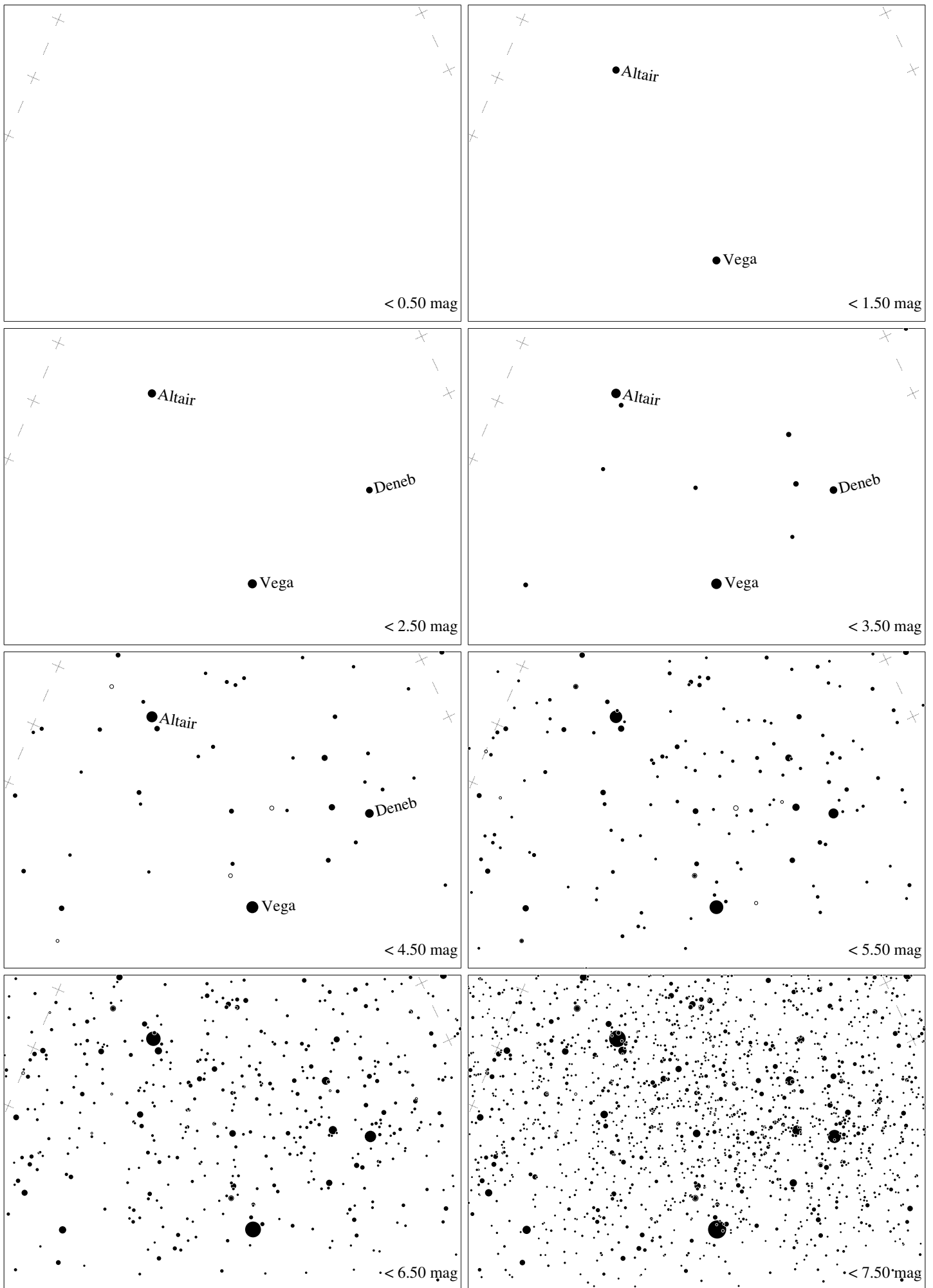
Maps for Globe at Night latitude 20° , 2020-10-12, 21 h local time (Sun at -48°), transparent air. Lines from N(E,S,W) to zenith shown (crosses each 10°). Centered on Albireo (β Cygni), 70° to the left from N, at 49° height, near the centre of Summer Triangle. Map vertical size is 50° . *Jan Hollan, CzechGlobe*



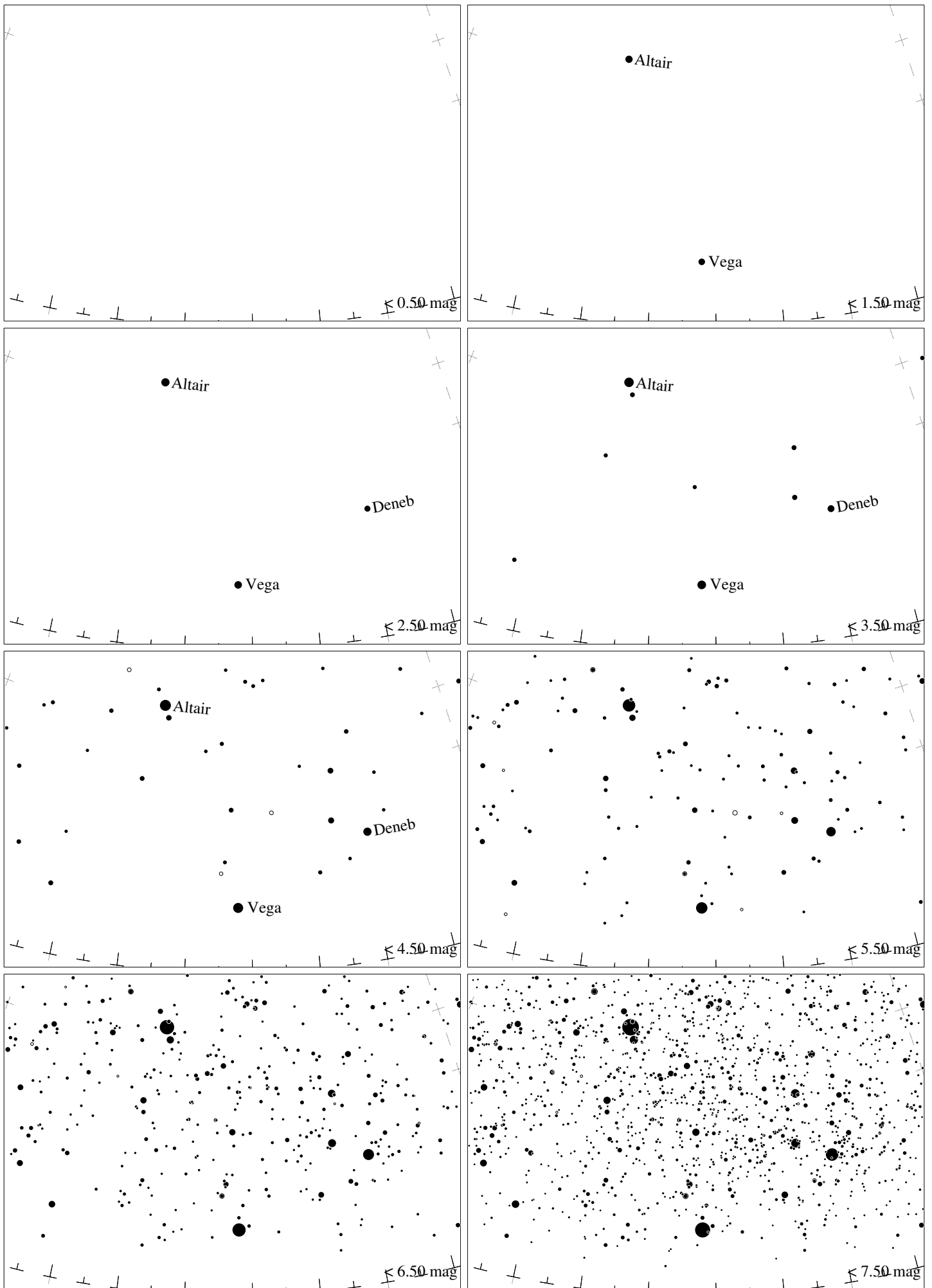
Maps for Globe at Night latitude 10° , 2020-10-12, 21 h local time (Sun at -49°), transparent air. Lines from N(E,S,W) to zenith shown (crosses each 10°). Centered on Albireo (β Cygni), 60° to the left from N, at 45° height, near the centre of Summer Triangle. Map vertical size is 50° . *Jan Hollan, CzechGlobe*



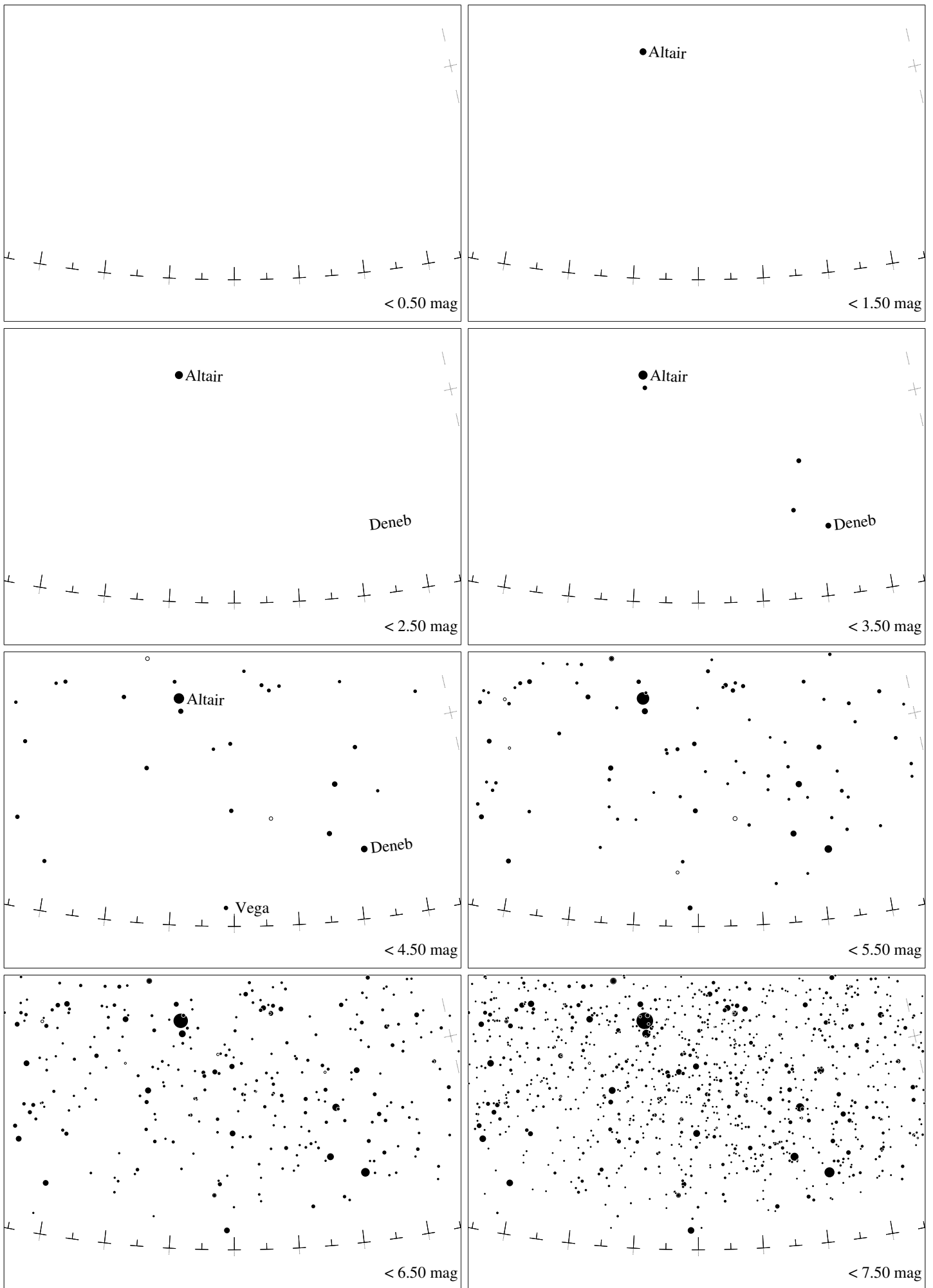
Maps for Globe at Night latitude 0° , 2020-10-12, 21 h local time (Sun at -48°), transparent air. Lines from N(E,S,W) to zenith shown (crosses each 10°). Centered on Albireo (β Cygni), 53° to the left from N, at 39° height, near the centre of Summer Triangle. Map vertical size is 50° . *Jan Hollan, CzechGlobe*



Maps for Globe at Night latitude -10° , 2020-10-12, 21 h local time (Sun at -45°), transparent air. Lines from N(E,S,W) to zenith shown (crosses each 10°). Centered on Albireo (β Cygni), 47° to the left from N, at 33° height, near the centre of Summer Triangle. Map vertical size is 50° . *Jan Hollan, CzechGlobe*



Maps for Globe at Night latitude -20° , 2020-10-12, 21 h local time (Sun at -40°), transparent air. Lines from N(E,S,W) to zenith shown (crosses each 10°). Centered on Albireo (β Cygni), 43° to the left from N, at 26° height, near the centre of Summer Triangle. Map vertical size is 50° . *Jan Hollan, CzechGlobe*



Maps for Globe at Night latitude -30° , 2020-10-12, 21 h local time (Sun at -35°), transparent air. Lines from N(E,S,W) to zenith shown (crosses each 10°). Centered on Albireo (β Cygni), 40° to the left from N, at 18° height, near the centre of Summer Triangle. Map vertical size is 50° . *Jan Hollan, CzechGlobe*