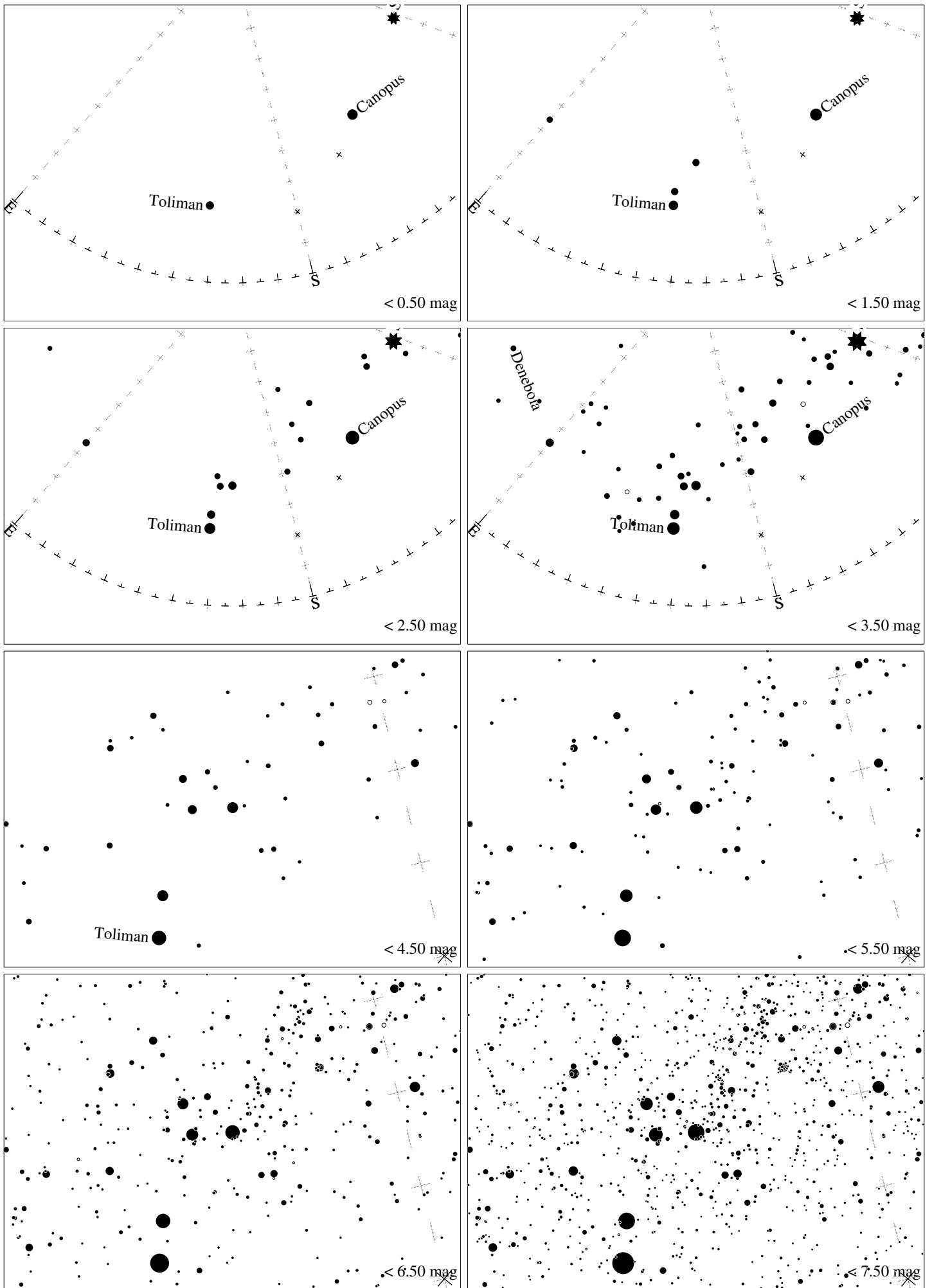
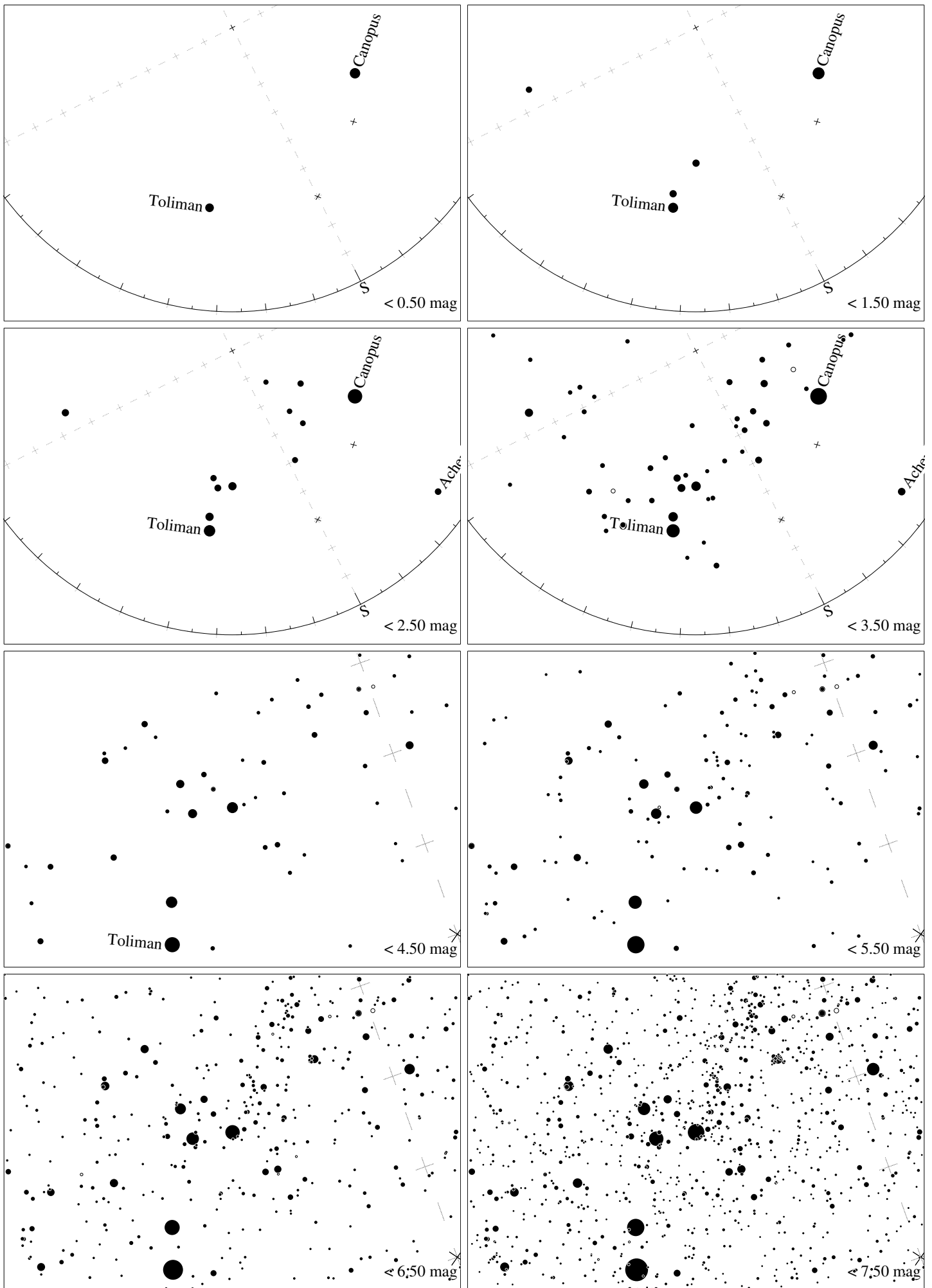


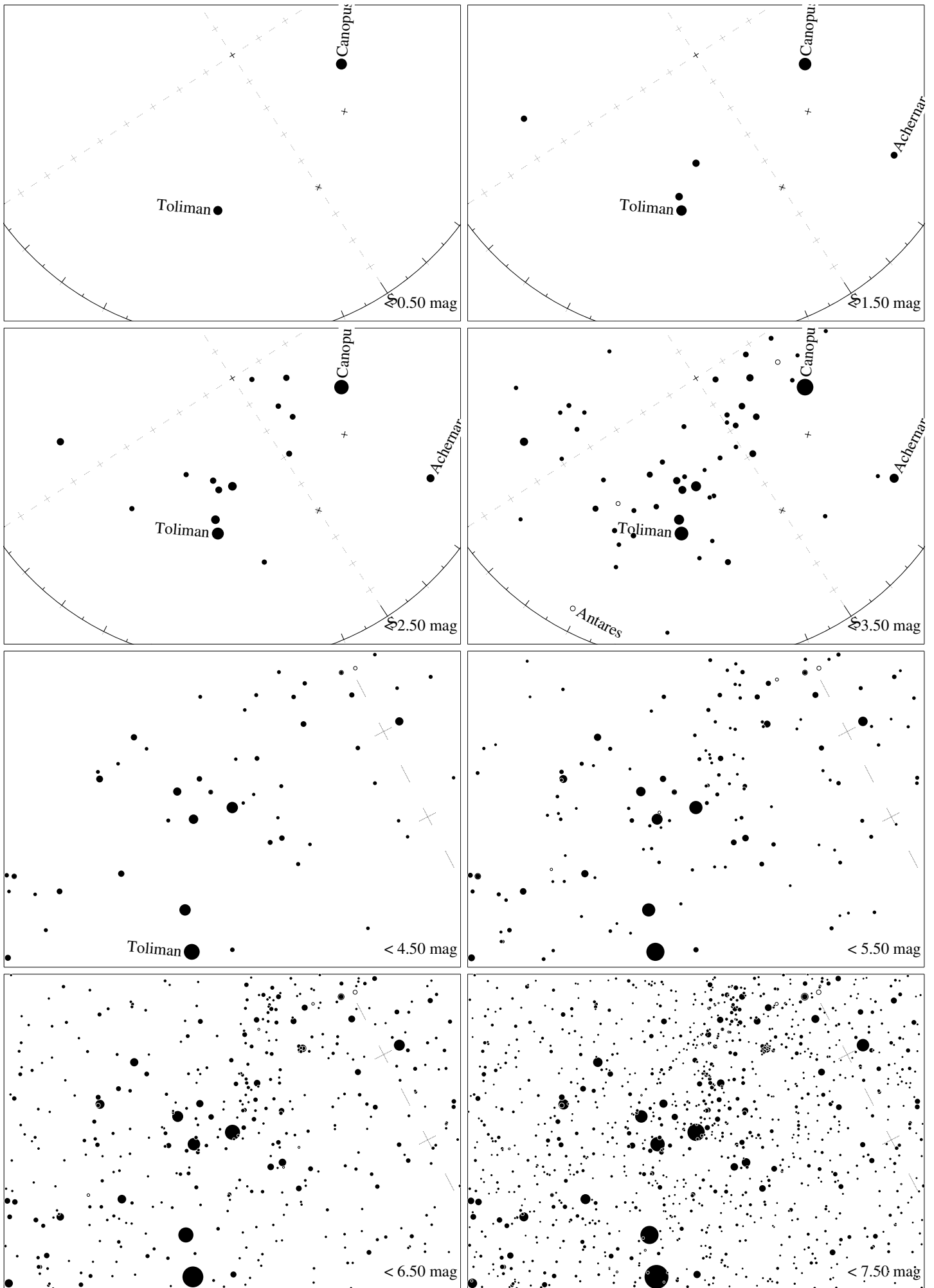
Maps for Globe at Night latitude -10° , 2019-03-31, 21 h local time (Sun at -44°), transparent air. The brightest star is Toliman (α Centauri). Central star Acrux (the brightest one in the Cross) is 21° left from the south, at 29° height. Detailed maps 33° vertically, the first four maps 100° . *Jan Hollan, CzechGlobe*



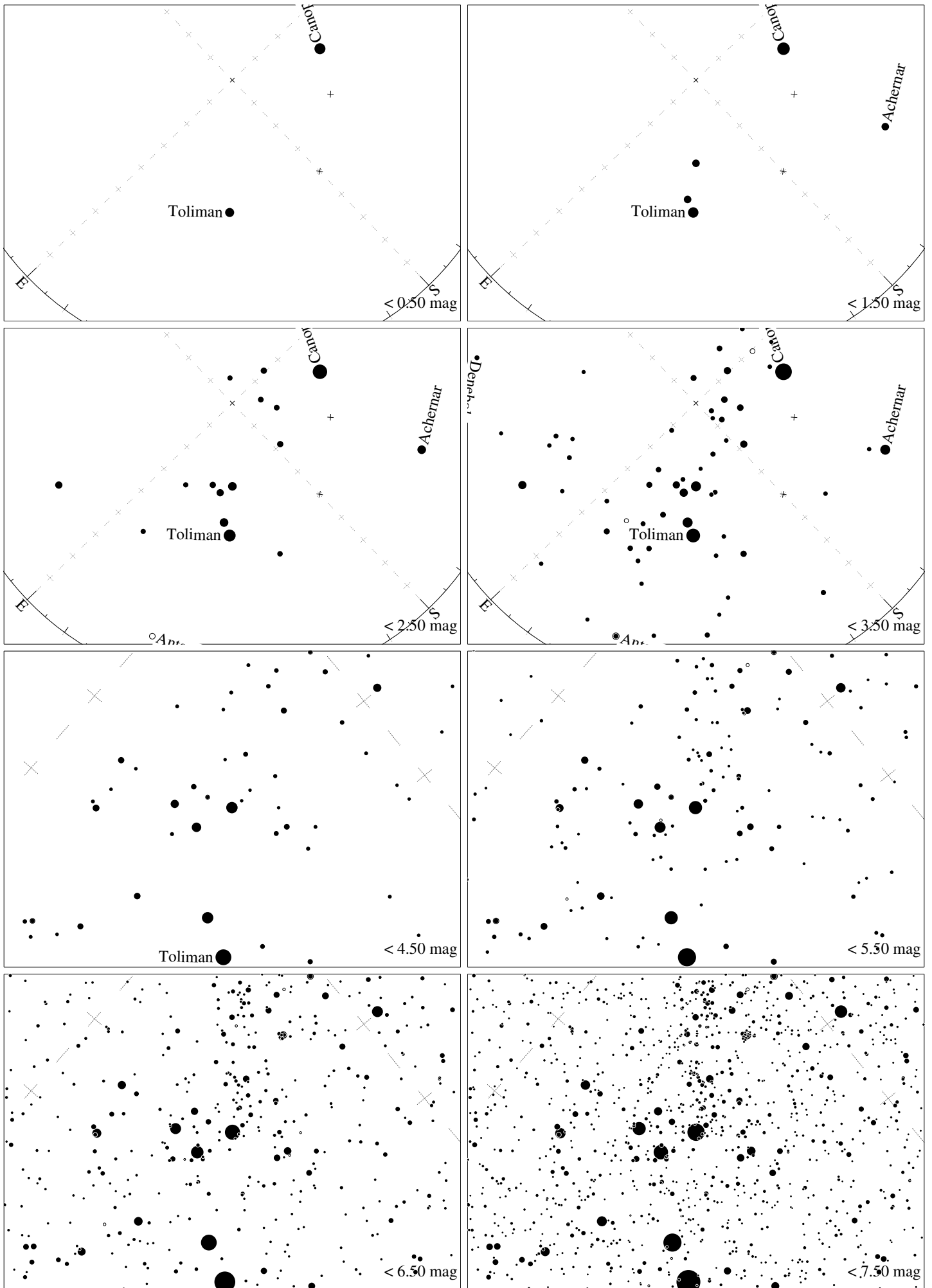
Maps for Globe at Night latitude -20° , 2019-03-31, 21 h local time (Sun at -42°), transparent air. The brightest star is Toliman (α Centauri). Central star Acrux (the brightest one in the Cross) is 23° left from the south, at 38° height. Detailed maps 33° vertically, the first four maps 100° . *Jan Hollan, CzechGlobe*



Maps for Globe at Night latitude -30° , 2019-03-31, 21 h local time (Sun at -40°), transparent air. The brightest star is Toliman (α Centauri). Central star Acrux (the brightest one in the Cross) is 27° left from the south, at 47° height. Detailed maps 33° vertically, the first four maps 100° . *Jan Hollan, CzechGlobe*



Maps for Globe at Night latitude -40° , 2019-03-31, 21 h local time (Sun at -35°), transparent air. The brightest star is Toliman (α Centauri). Central star Acrux (the brightest one in the Cross) is 33° left from the south, at 56° height. Detailed maps 33° vertically, the first four maps 100° . *Jan Hollan, CzechGlobe*



Maps for Globe at Night latitude -50° , 2019-03-31, 21 h local time (Sun at -30°), transparent air. The brightest star is Toliman (α Centauri). Central star Acrux (the brightest one in the Cross) is 44° left from the south, at 64° height. Detailed maps 33° vertically, the first four maps 100° . Jan Hollan, CzechGlobe