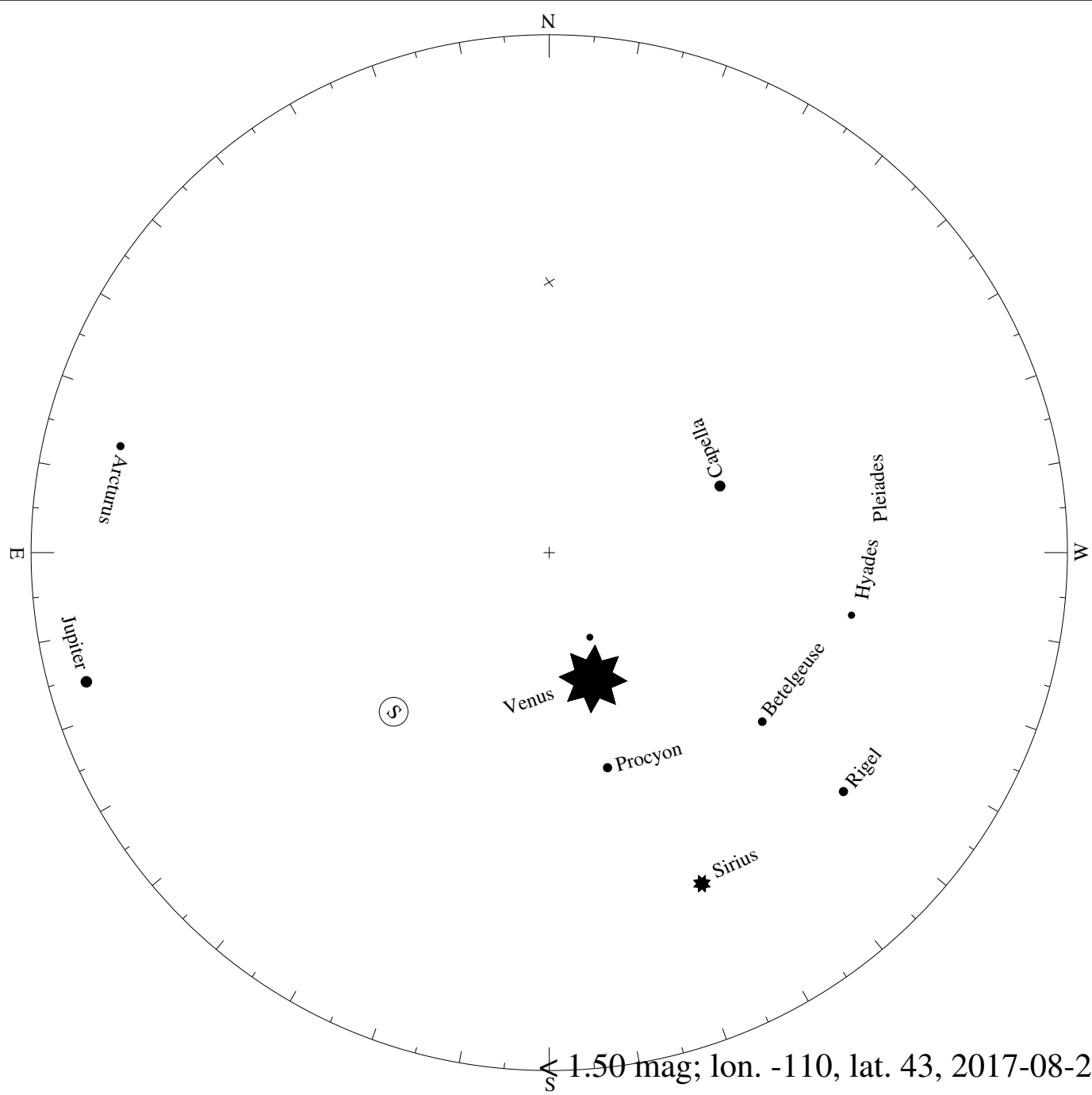
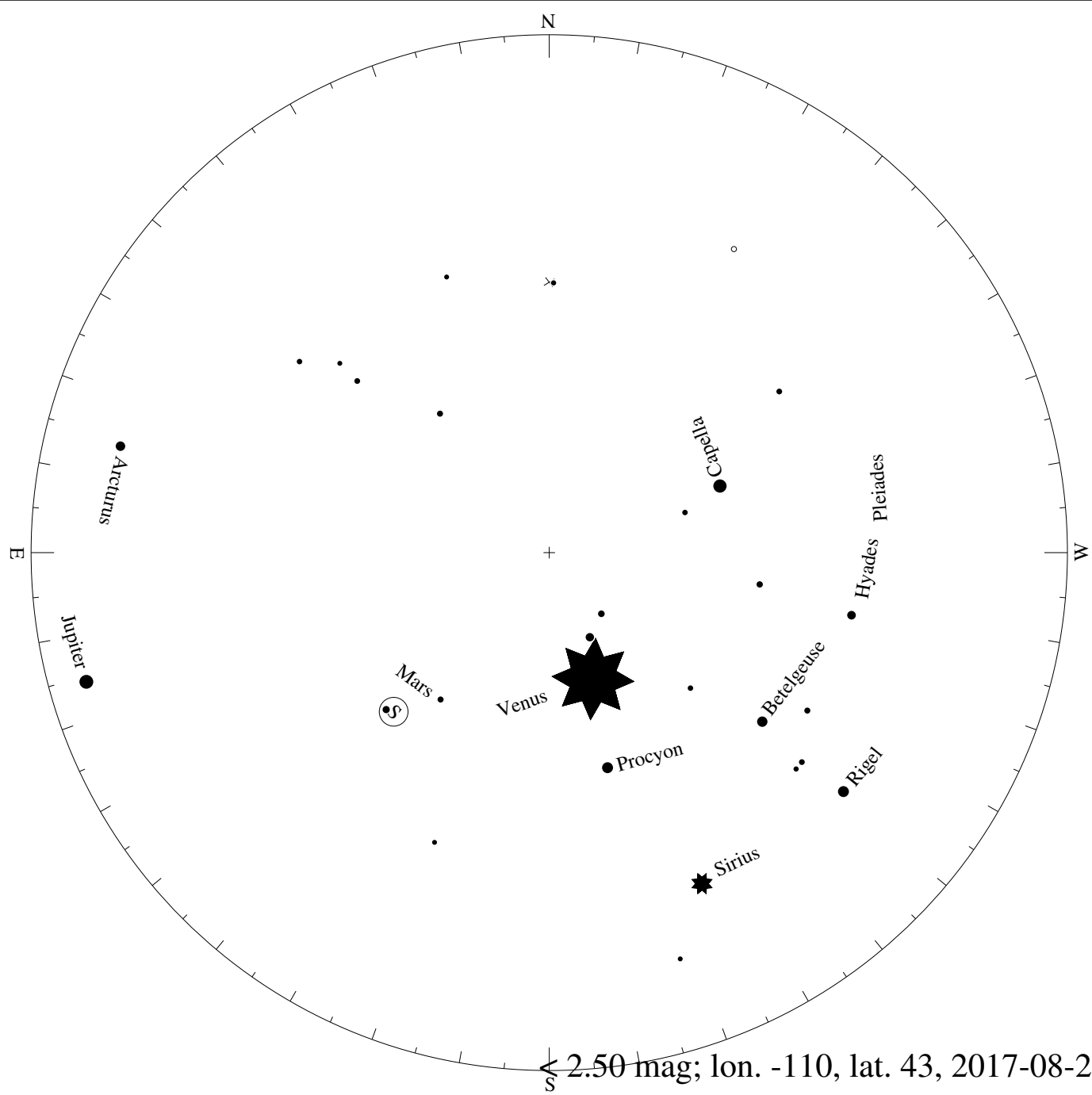


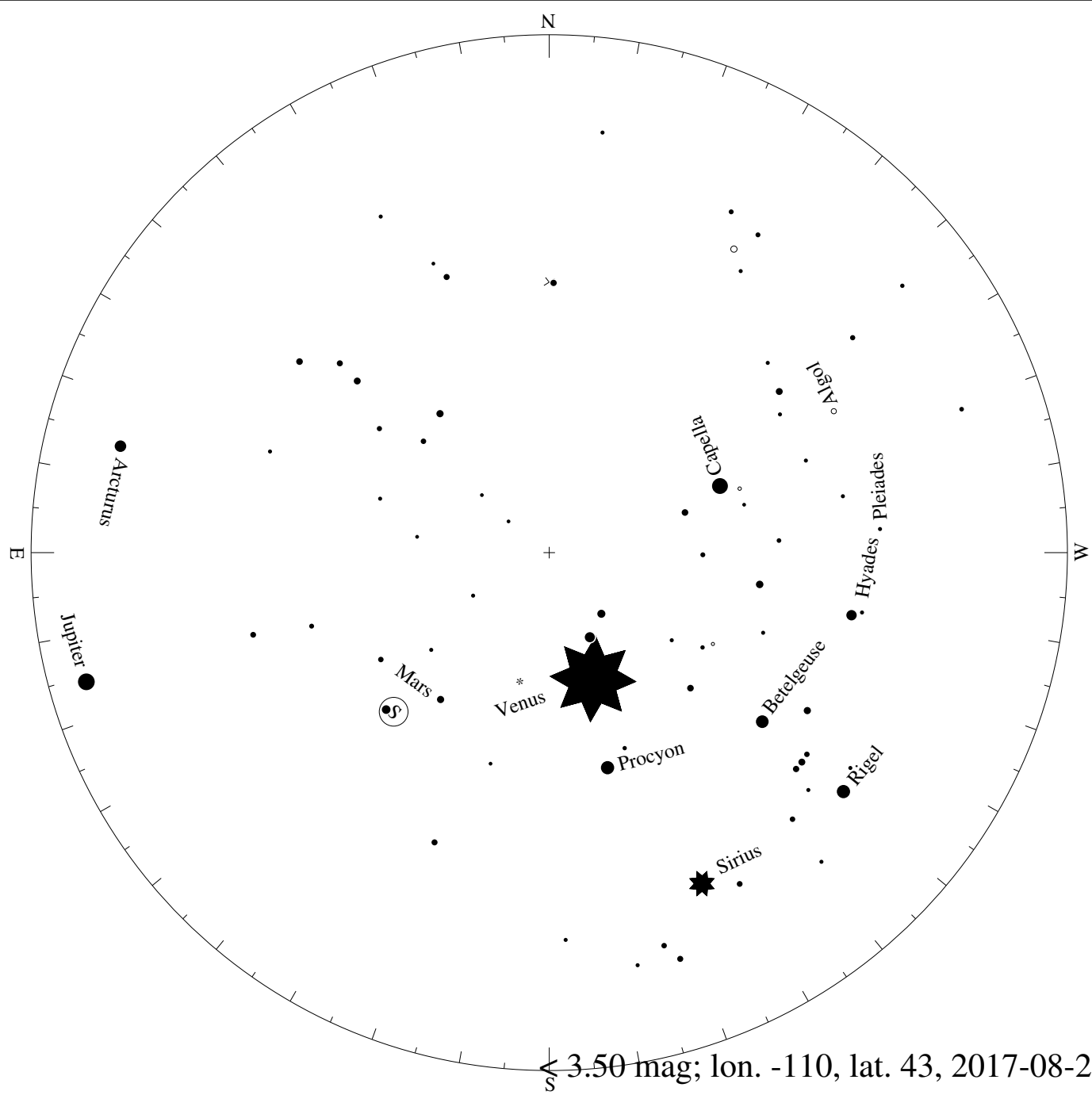
≤ 0.50 mag; lon. -110, lat. 43, 2017-08-21, 17:37 UTC



1.50 mag; lon. -110, lat. 43, 2017-08-21, 17:37 UTC



2.50 mag; lon. -110, lat. 43, 2017-08-21, 17:37 UTC



3.50 mag; lon. -110, lat. 43, 2017-08-21, 17:37 UTC

