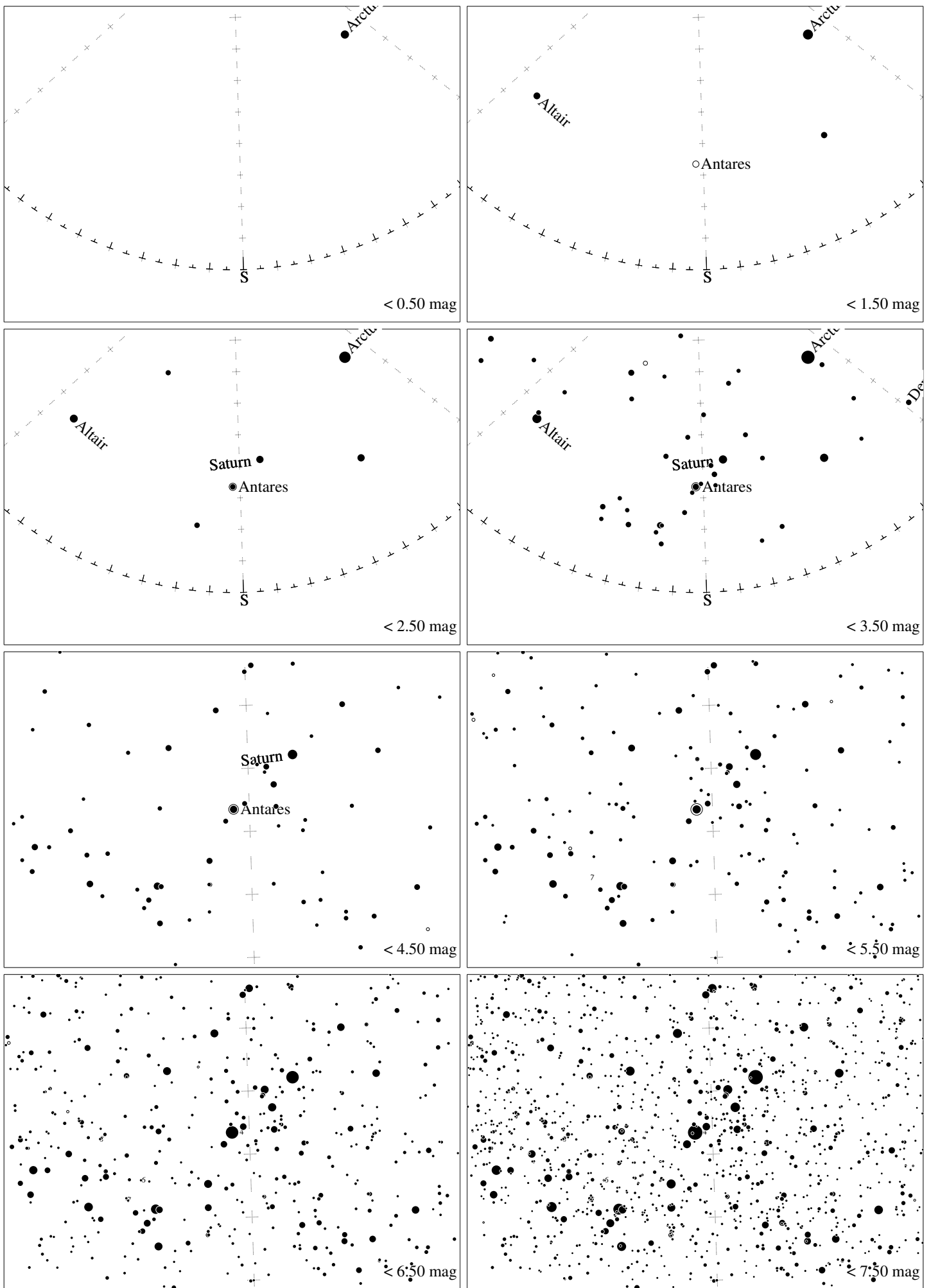
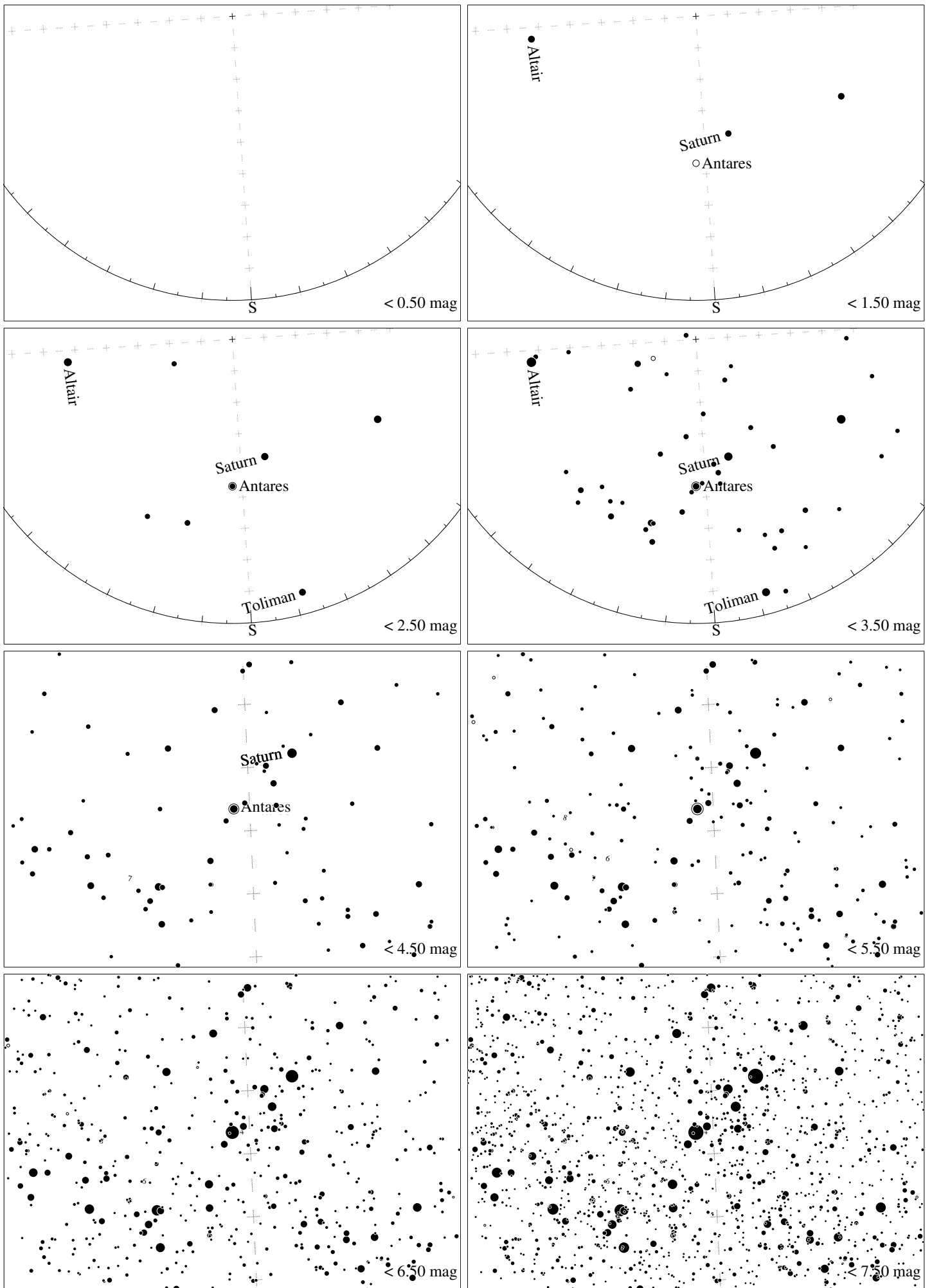


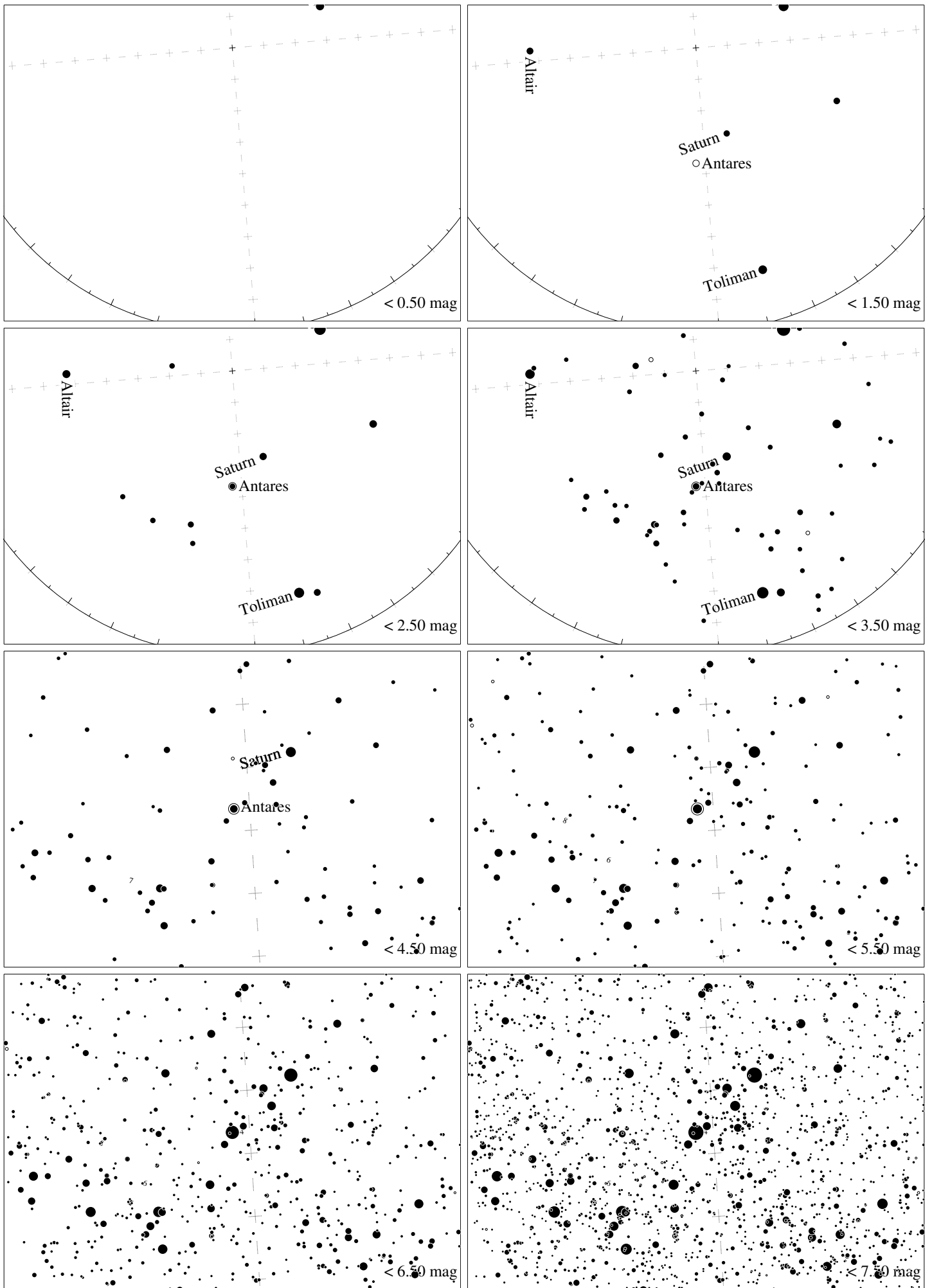
Maps for Globe at Night latitude  $40^\circ$ , 2015-07-11, 21 h local time (Sun at  $-14^\circ$ ), transparent air. Lines from N(E,S,W) to zenith shown (crosses each  $10^\circ$ ). Centered on Antares ( $\alpha$  Scorpii), which is  $3^\circ$  to the left from S, at  $24^\circ$  height. Detailed maps  $50^\circ$  vertically, the first four maps  $100^\circ$ . *Jan Hollan, CzechGlobe*



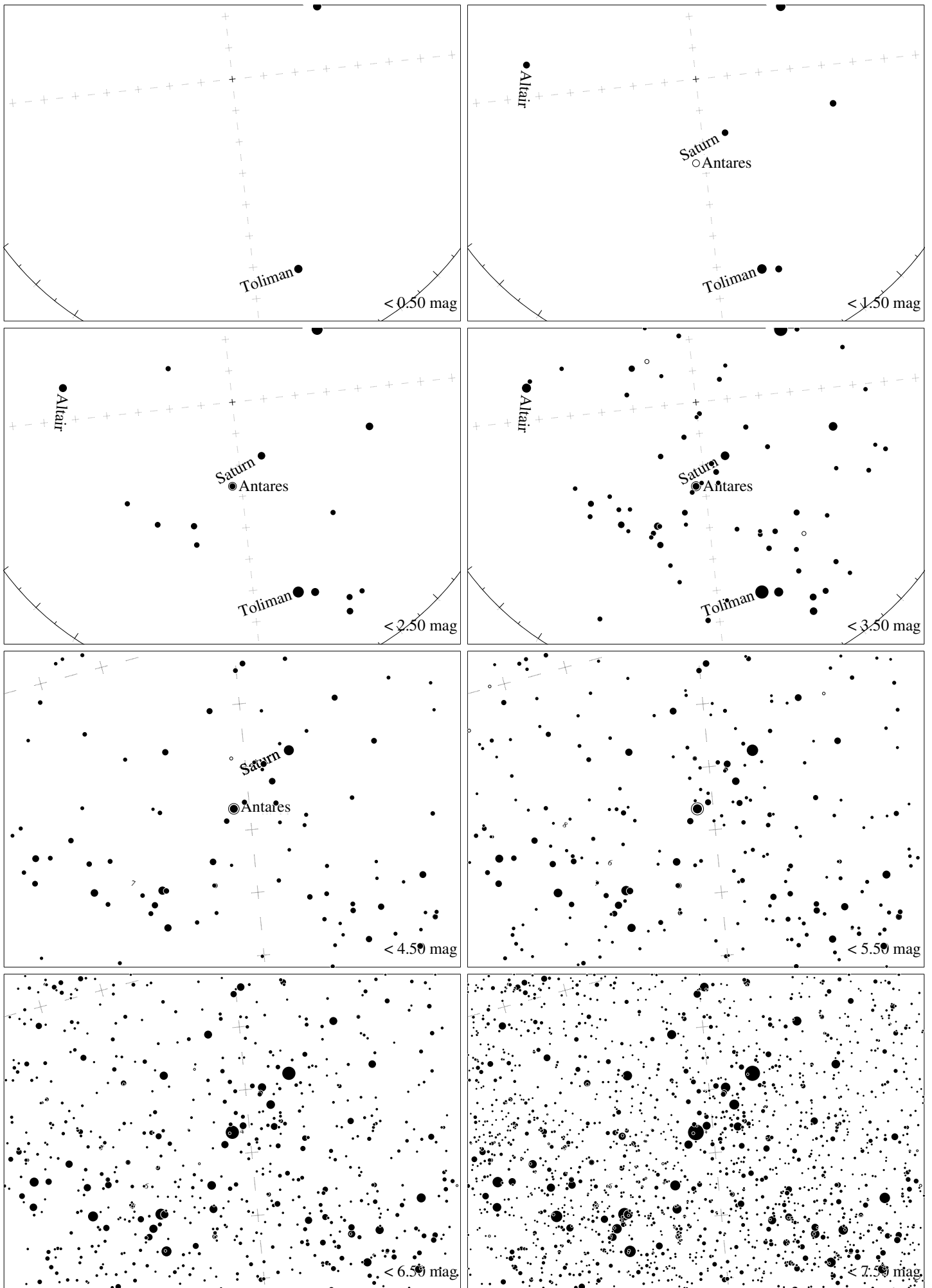
Maps for Globe at Night latitude  $30^\circ$ , 2015-07-11, 21 h local time (Sun at  $-22^\circ$ ), transparent air. Lines from N(E,S,W) to zenith shown (crosses each  $10^\circ$ ). Centered on Antares ( $\alpha$  Scorpii), which is  $3^\circ$  to the left from S, at  $33^\circ$  height. Detailed maps  $50^\circ$  vertically, the first four maps  $100^\circ$ . *Jan Hollan, CzechGlobe*



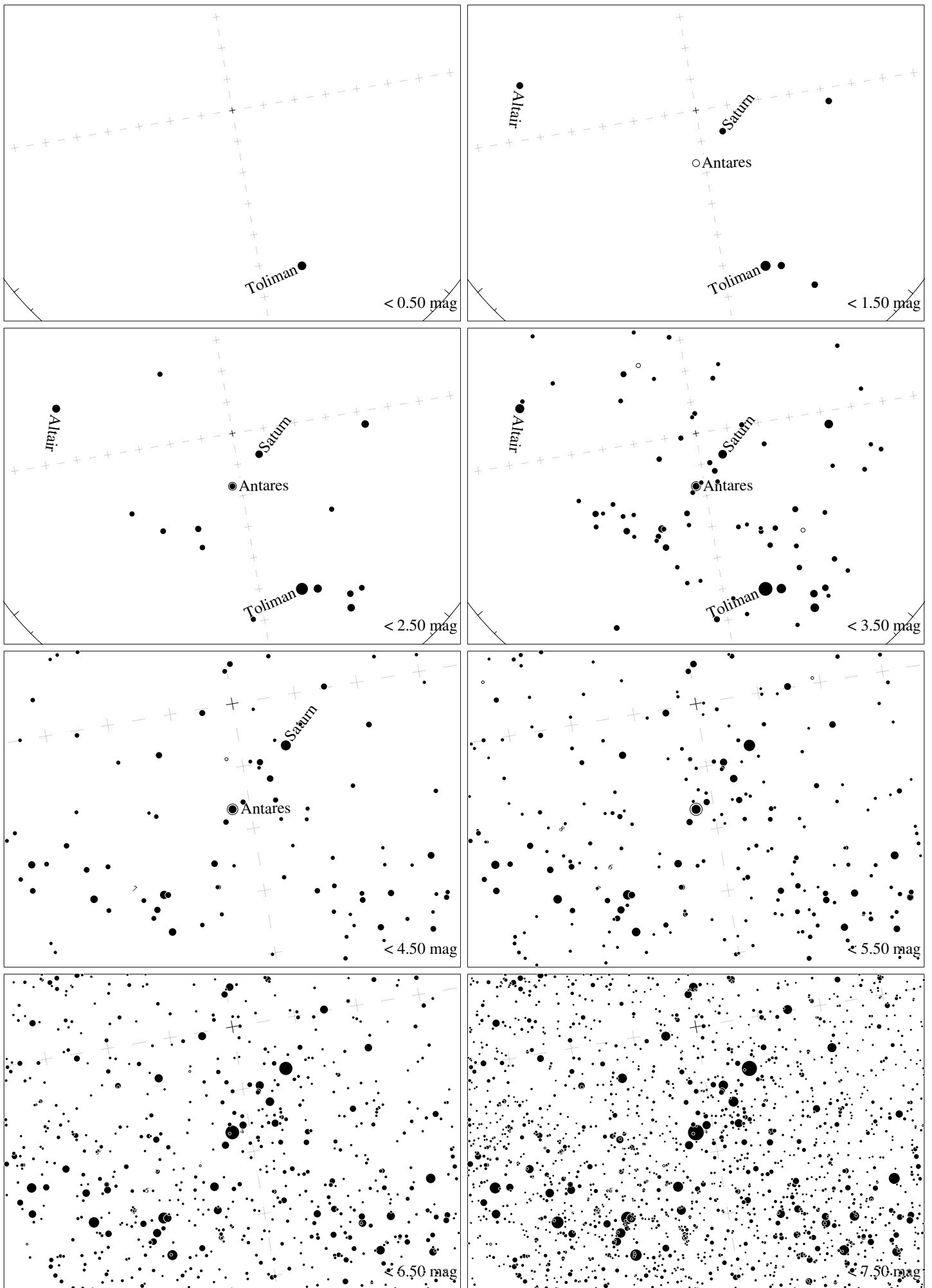
Maps for Globe at Night latitude  $20^\circ$ , 2015-07-11, 21 h local time (Sun at  $-28^\circ$ ), transparent air. Lines from N(E,S,W) to zenith shown (crosses each  $10^\circ$ ). Centered on Antares ( $\alpha$  Scorpii), which is  $4^\circ$  to the left from S, at  $43^\circ$  height. Detailed maps  $50^\circ$  vertically, the first four maps  $100^\circ$ . *Jan Hollan, CzechGlobe*



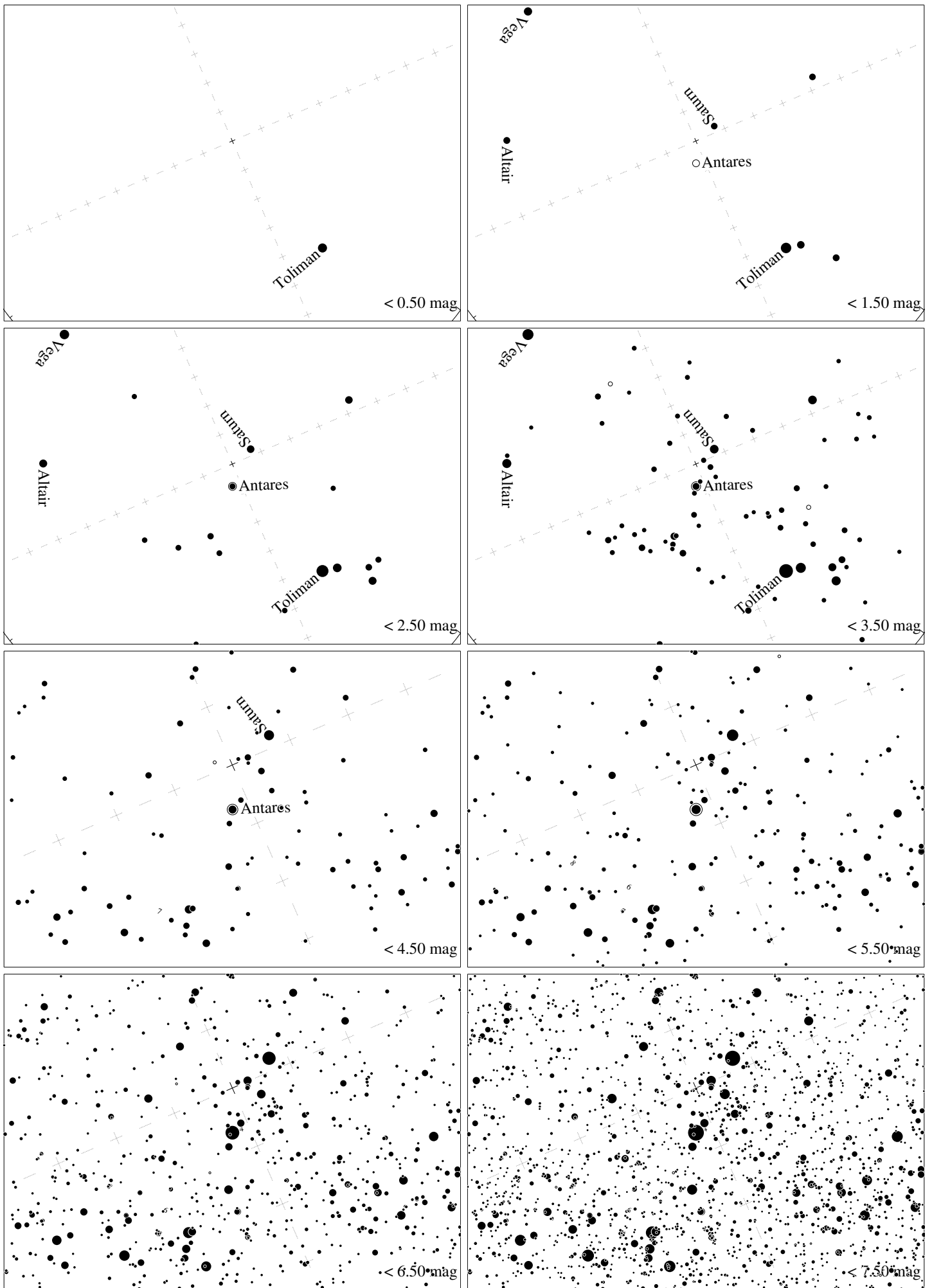
Maps for Globe at Night latitude  $10^\circ$ , 2015-07-11, 21 h local time (Sun at  $-34^\circ$ ), transparent air. Lines from N(E,S,W) to zenith shown (crosses each  $10^\circ$ ). Centered on Antares ( $\alpha$  Scorpii), which is  $5^\circ$  to the left from S, at  $53^\circ$  height. Detailed maps  $50^\circ$  vertically, the first four maps  $100^\circ$ . *Jan Hollan, CzechGlobe*



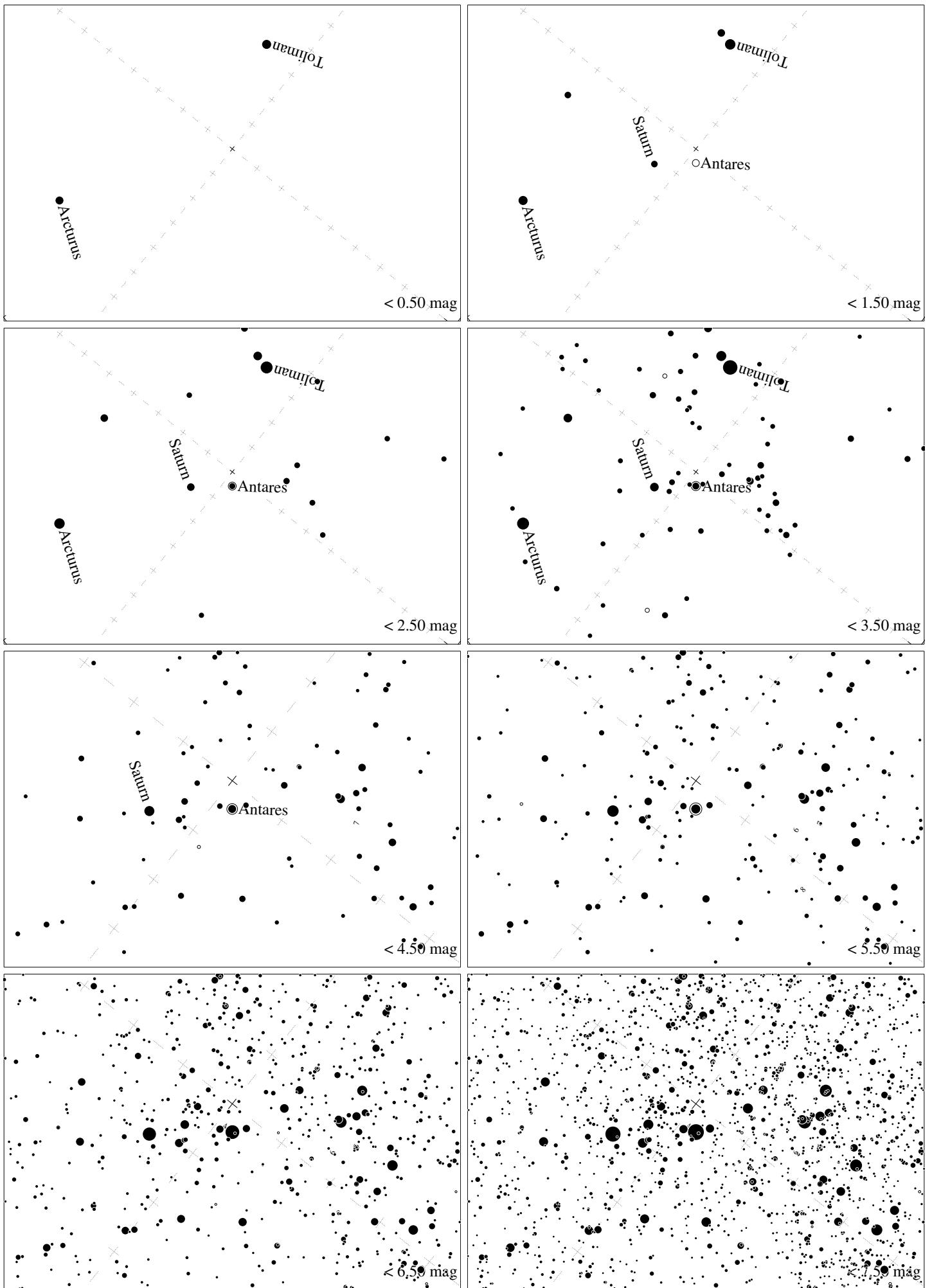
Maps for Globe at Night latitude  $0^\circ$ , 2015-07-11, 21 h local time (Sun at  $-40^\circ$ ), transparent air. Lines from N(E,S,W) to zenith shown (crosses each  $10^\circ$ ). Centered on Antares ( $\alpha$  Scorpii), which is  $6^\circ$  to the left from S, at  $63^\circ$  height. Detailed maps  $50^\circ$  vertically, the first four maps  $100^\circ$ . *Jan Hollan, CzechGlobe*



Maps for Globe at Night latitude  $-10^\circ$ , 2015-07-11, 21 h local time (Sun at  $-44^\circ$ ), transparent air. Lines from N(E,S,W) to zenith shown (crosses each  $10^\circ$ ). Centered on Antares ( $\alpha$  Scorpii), which is  $10^\circ$  to the left from S, at  $73^\circ$  height. Detailed maps  $50^\circ$  vertically, the first four maps  $100^\circ$ . *Jan Hollan, CzechGlobe*

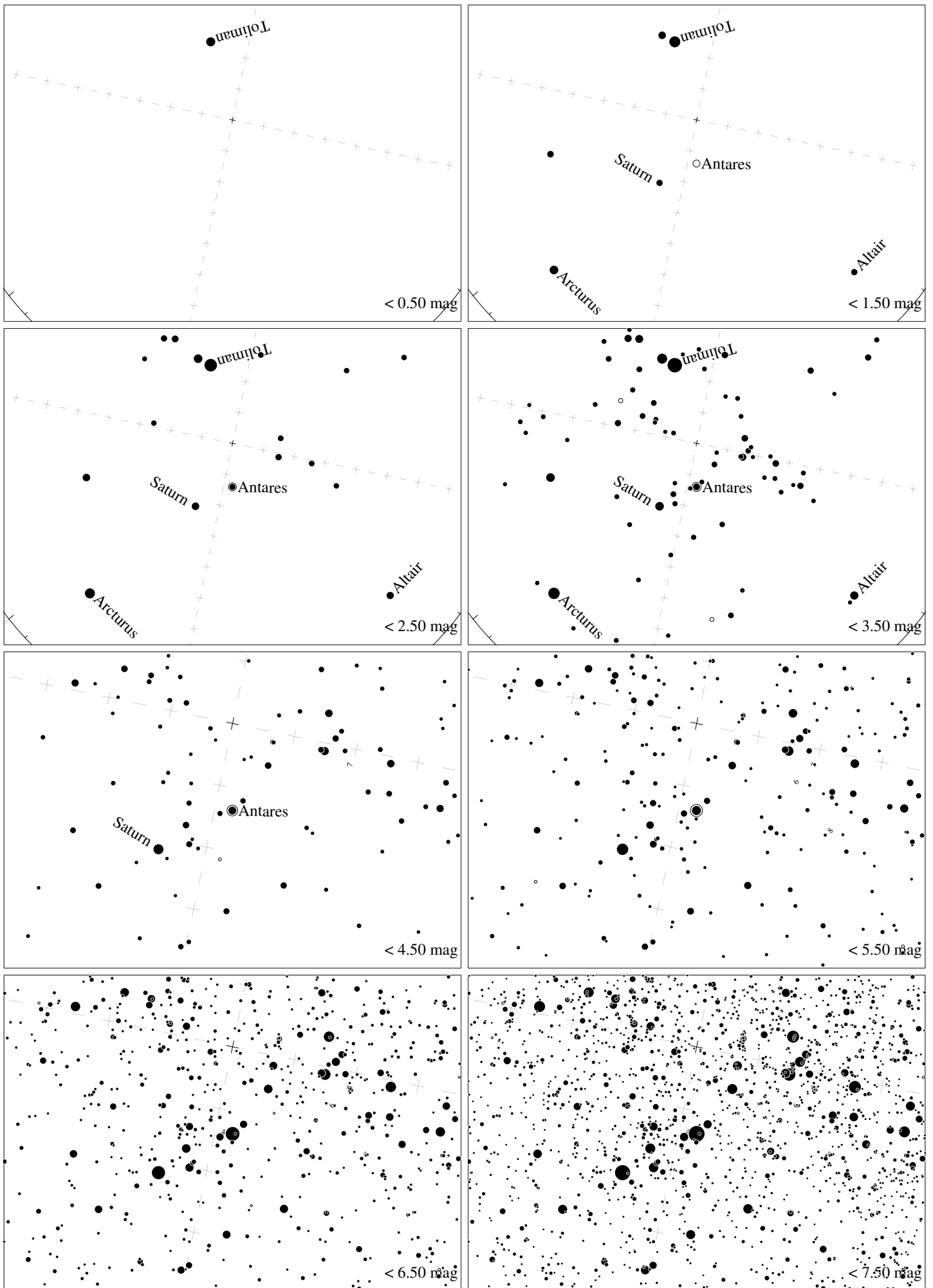


Maps for Globe at Night latitude  $-20^\circ$ , 2015-07-11, 21 h local time (Sun at  $-47^\circ$ ), transparent air. Lines from N(E,S,W) to zenith shown (crosses each  $10^\circ$ ). Centered on Antares ( $\alpha$  Scorpii), which is  $23^\circ$  to the left from S, at  $83^\circ$  height. Detailed maps  $50^\circ$  vertically, the first four maps  $100^\circ$ . *Jan Hollan, CzechGlobe*

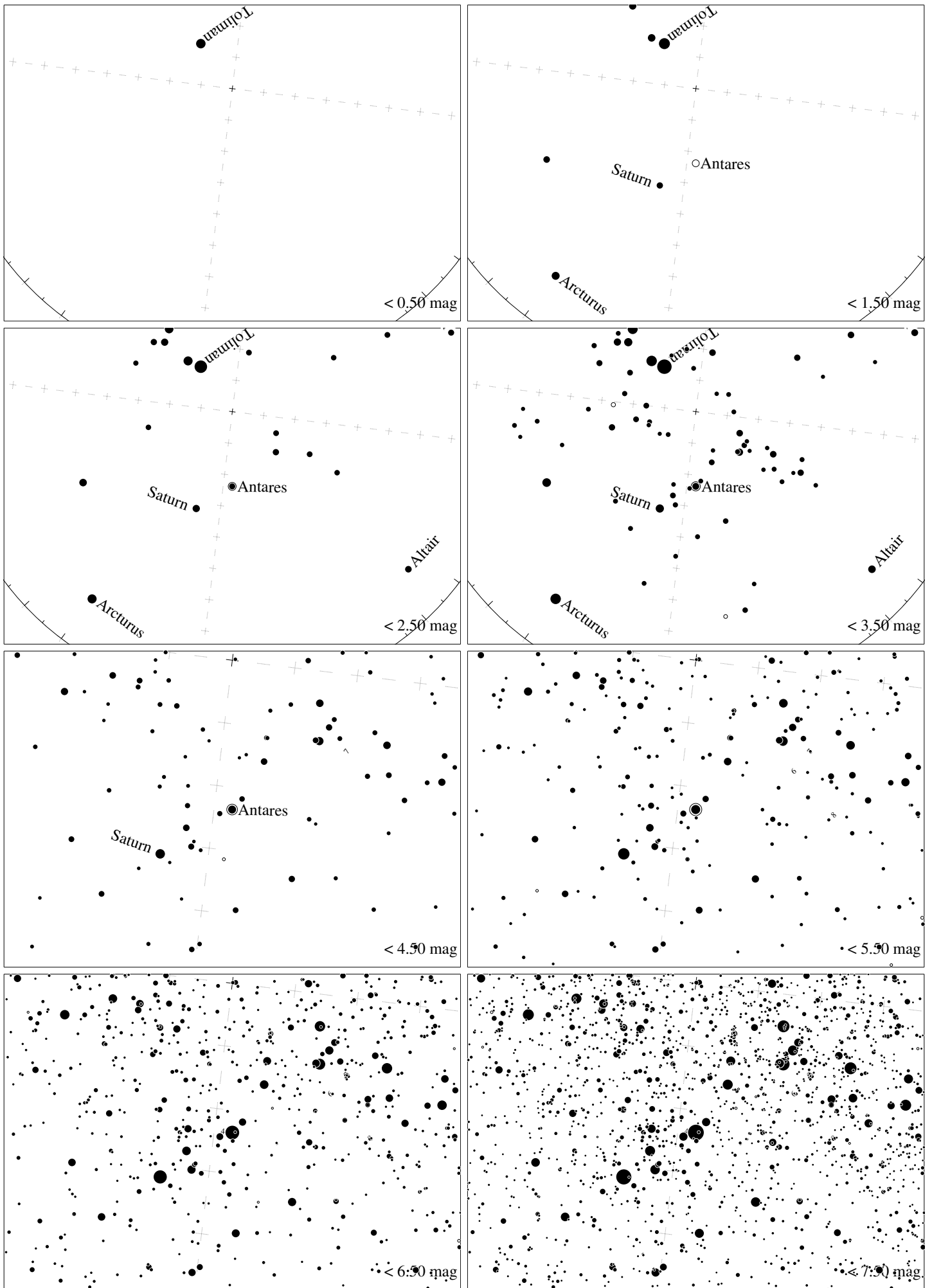


Maps for Globe at Night latitude  $-30^\circ$ , 2015-07-11, 21 h local time (Sun at  $-48^\circ$ ), transparent air. Lines from N(E,S,W) to zenith shown (crosses each  $10^\circ$ ). Centered on Antares ( $\alpha$  Scorpii), which is  $39^\circ$  to the right from N, at  $86^\circ$  height. Detailed maps  $50^\circ$  vertically, the first four maps  $100^\circ$ . *Jan Hollan, CzechGlobe*

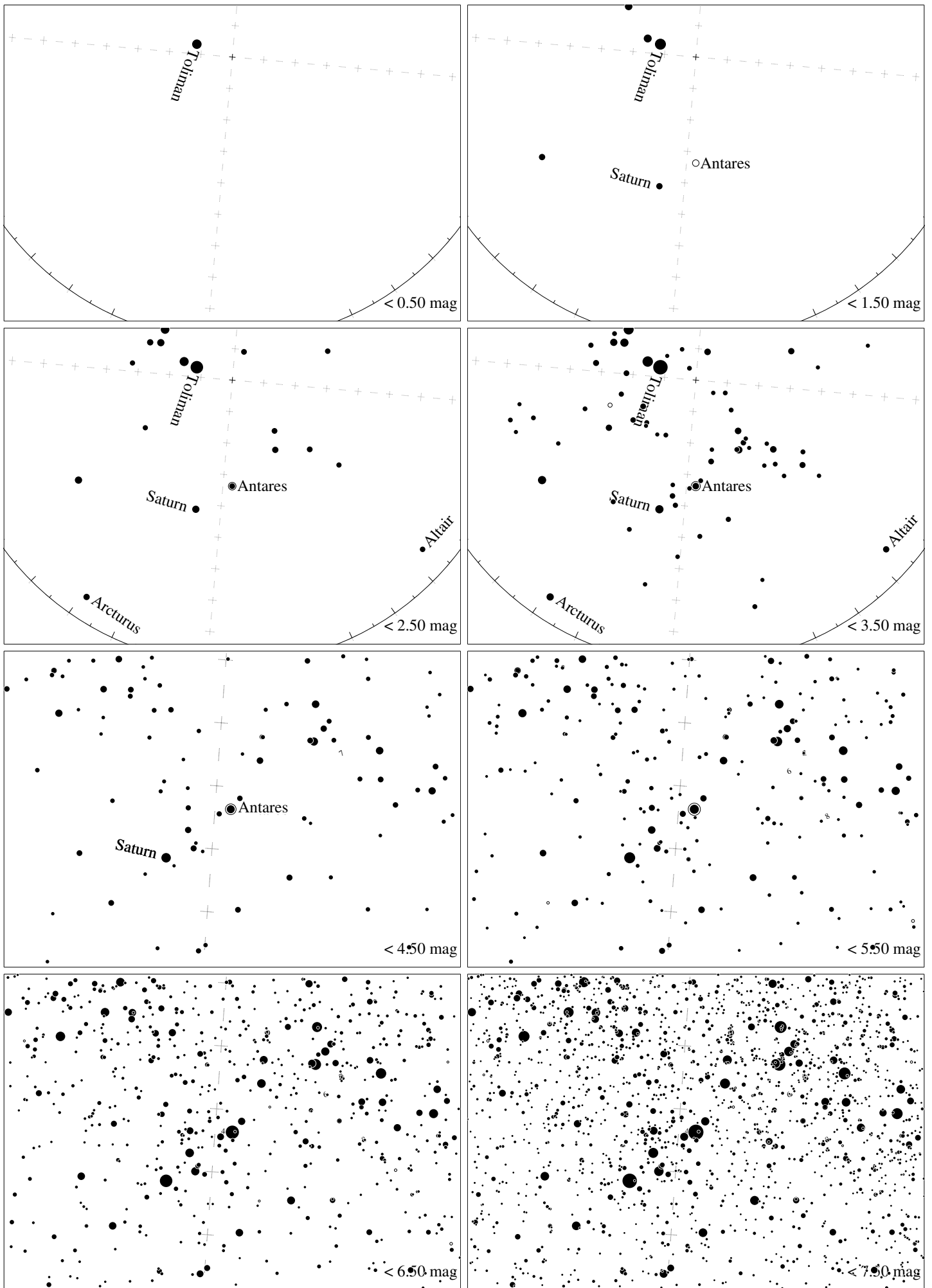




Maps for Globe at Night latitude  $-40^\circ$ , 2015-07-11, 21 h local time (Sun at  $-47^\circ$ ), transparent air. Lines from N(E,S,W) to zenith shown (crosses each  $10^\circ$ ). Centered on Antares ( $\alpha$  Scorpii), which is  $12^\circ$  to the right from N, at  $76^\circ$  height. Detailed maps  $50^\circ$  vertically, the first four maps  $100^\circ$ . *Jan Hollan, CzechGlobe*



Maps for Globe at Night latitude  $-50^\circ$ , 2015-07-11, 21 h local time (Sun at  $-44^\circ$ ), transparent air. Lines from N(E,S,W) to zenith shown (crosses each  $10^\circ$ ). Centered on Antares ( $\alpha$  Scorpii), which is  $7^\circ$  to the right from N, at  $66^\circ$  height. Detailed maps  $50^\circ$  vertically, the first four maps  $100^\circ$ . *Jan Hollan, CzechGlobe*



Maps for Globe at Night latitude  $-60^\circ$ , 2015-07-11, 21 h local time (Sun at  $-40^\circ$ ), transparent air. Lines from N(E,S,W) to zenith shown (crosses each  $10^\circ$ ). Centered on Antares ( $\alpha$  Scorpii), which is  $5^\circ$  to the right from N, at  $56^\circ$  height. Detailed maps  $50^\circ$  vertically, the first four maps  $100^\circ$ . *Jan Hollan, CzechGlobe*