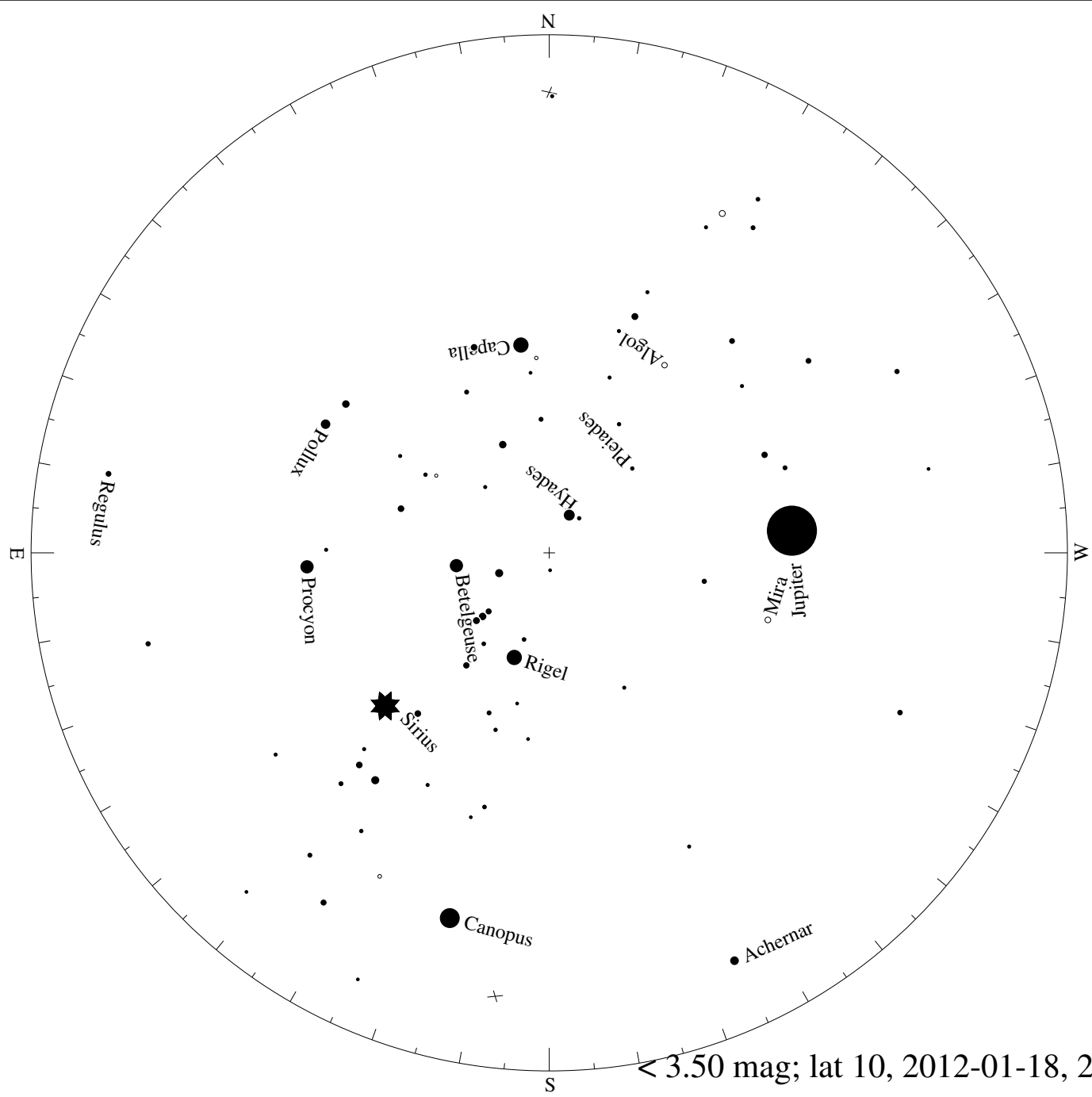
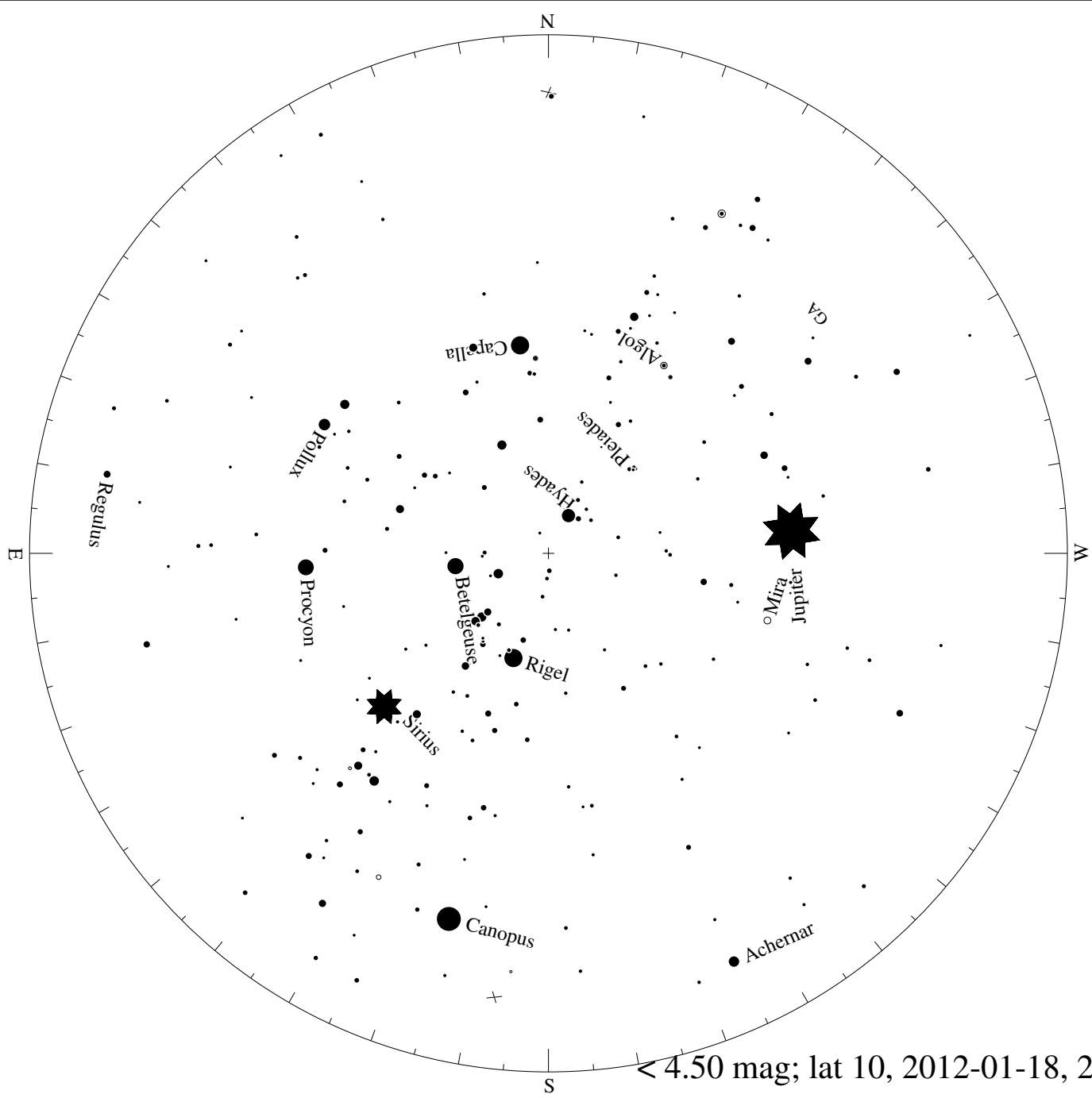
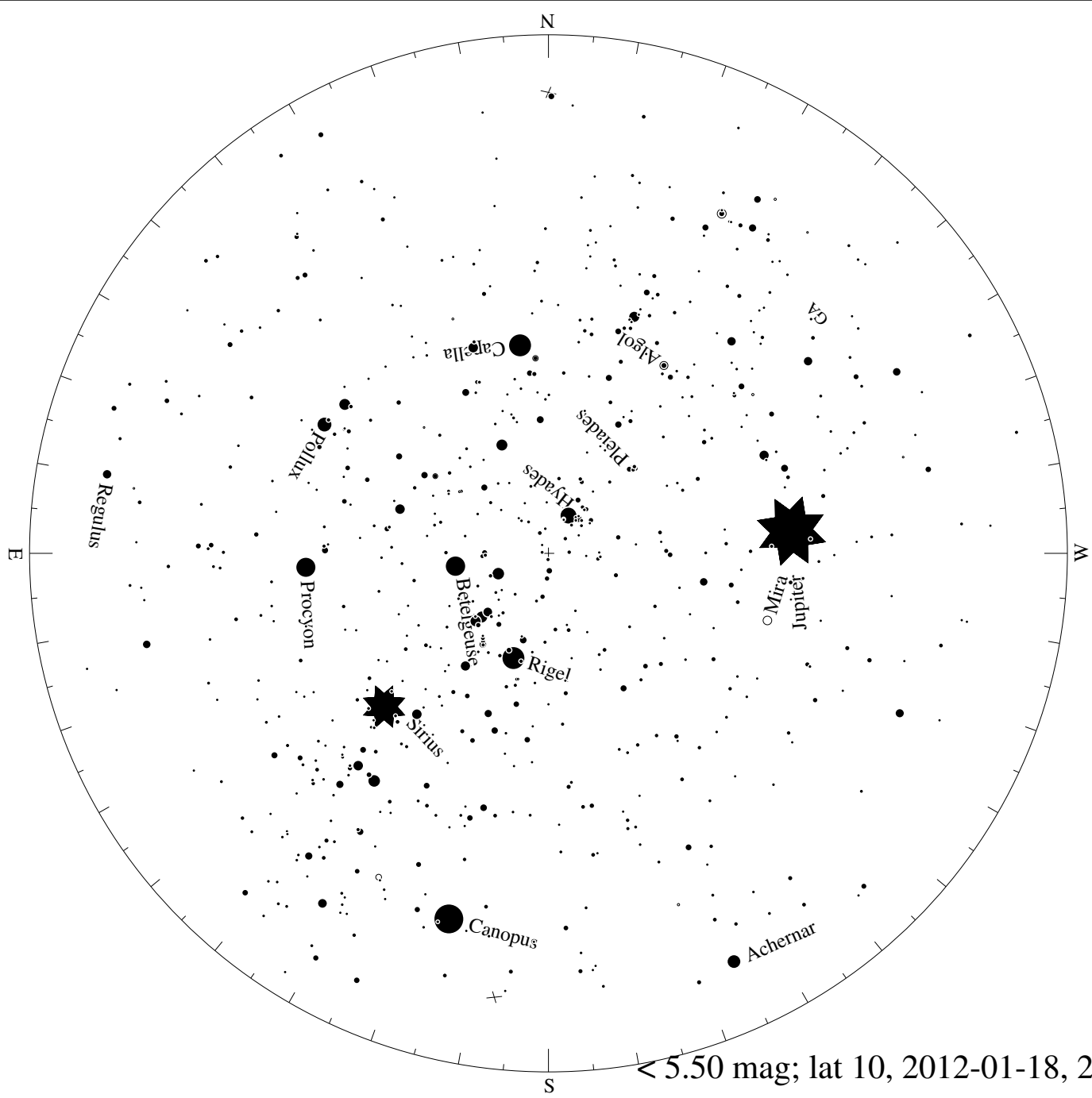


> 2.50 mag; lat 10, 2012-01-18, 21 h local time

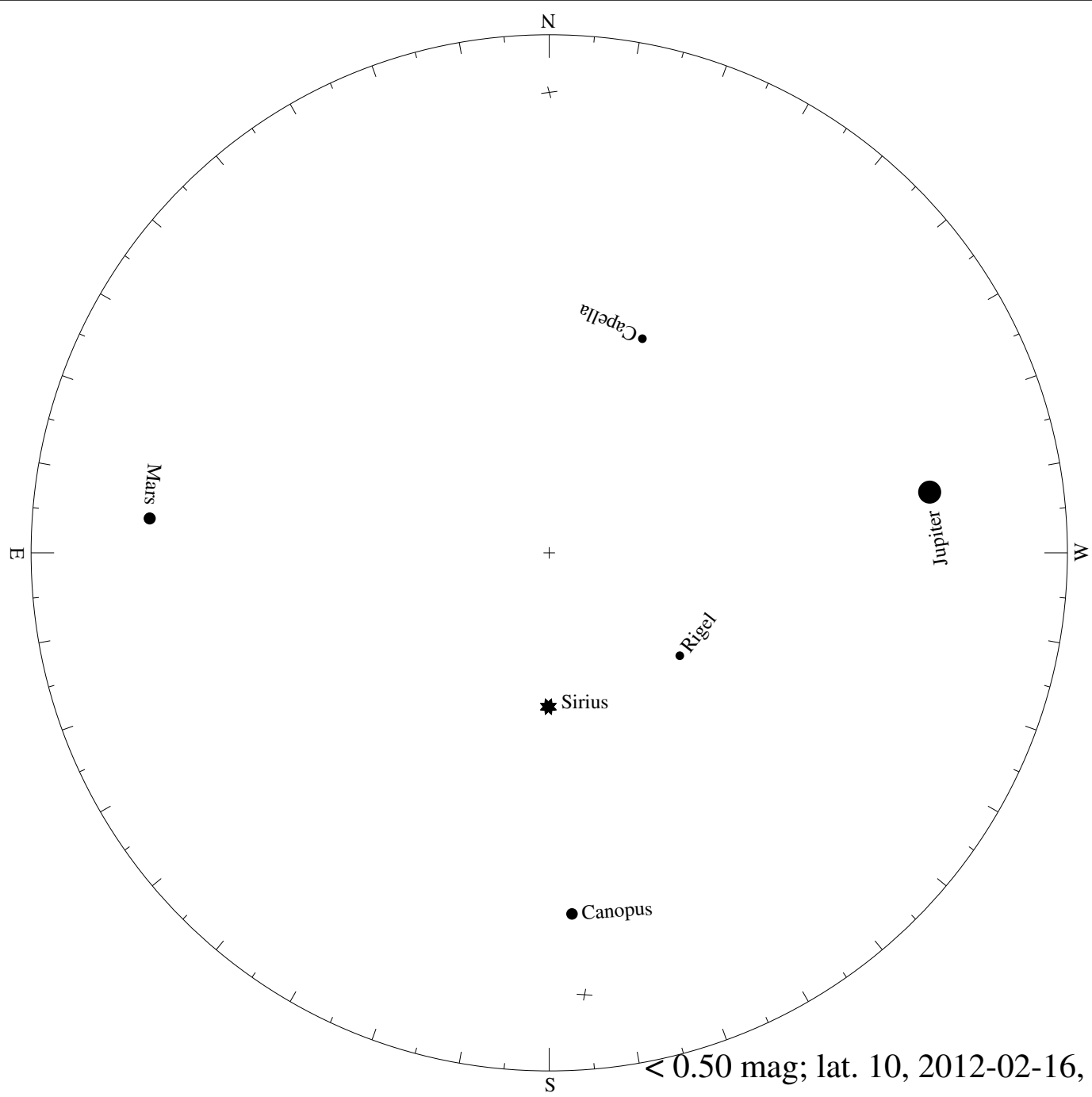




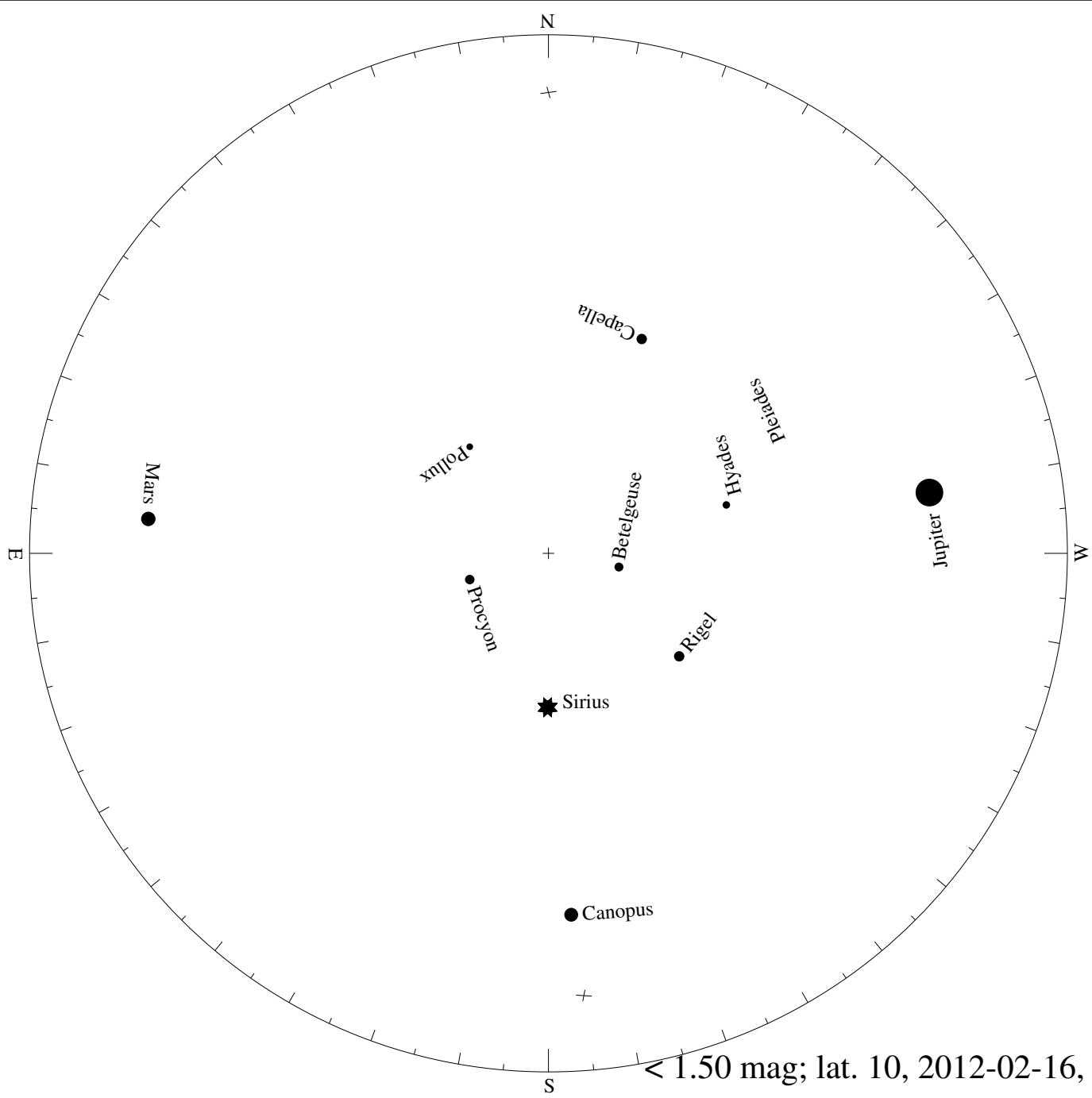
≤ 4.50 mag; lat 10, 2012-01-18, 21 h local time

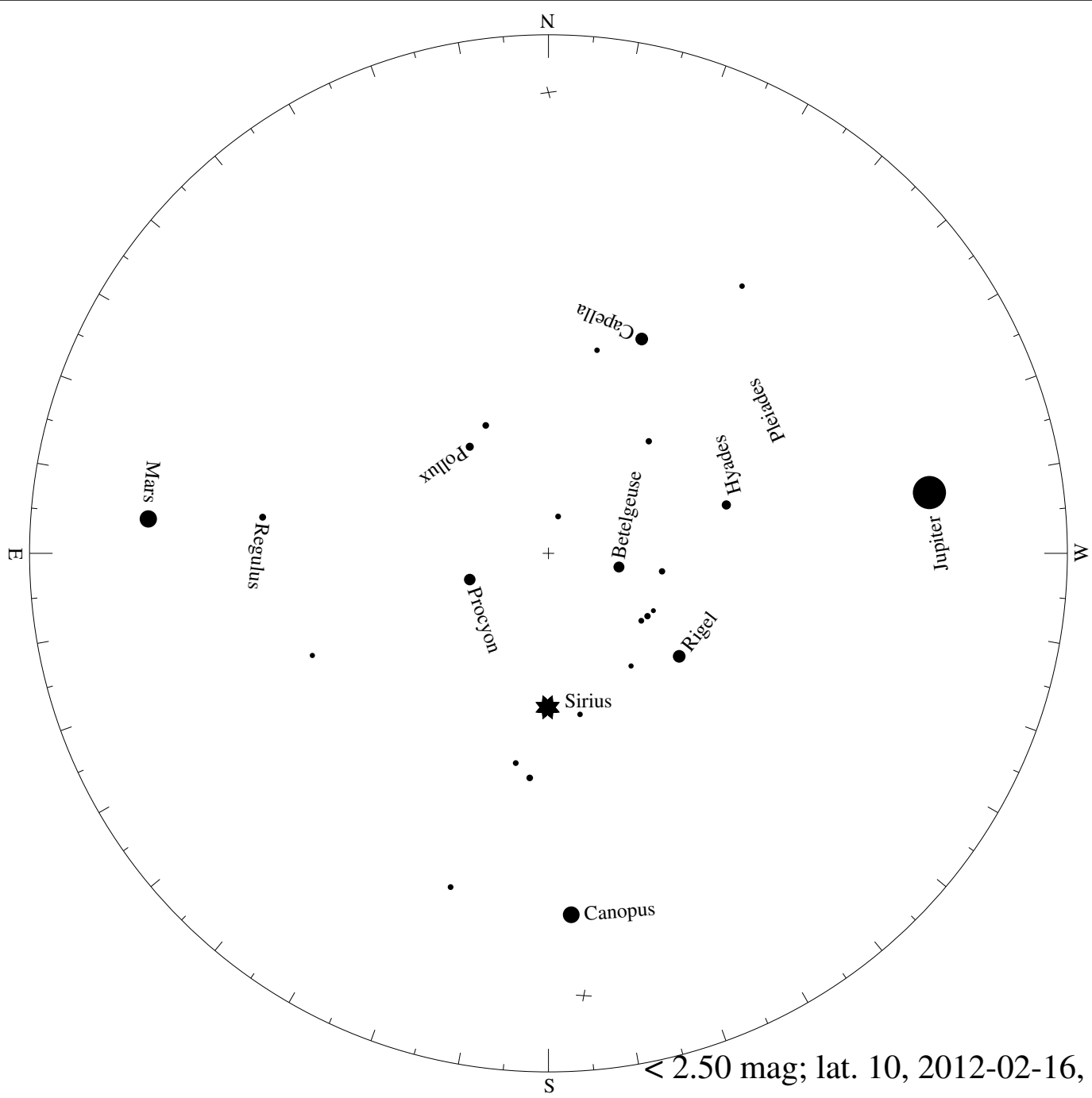


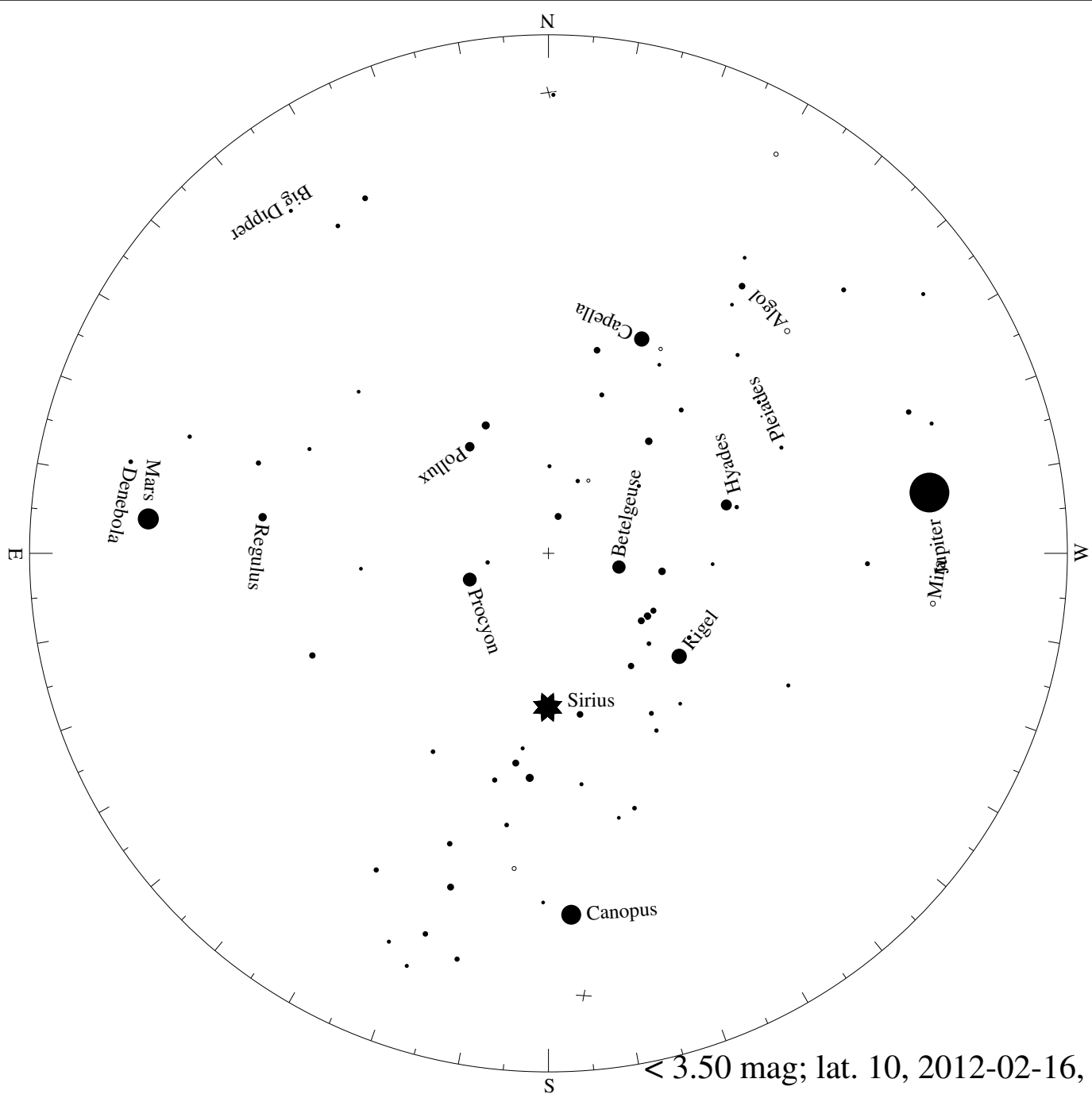
> 5.50 mag; lat 10, 2012-01-18, 21 h local time

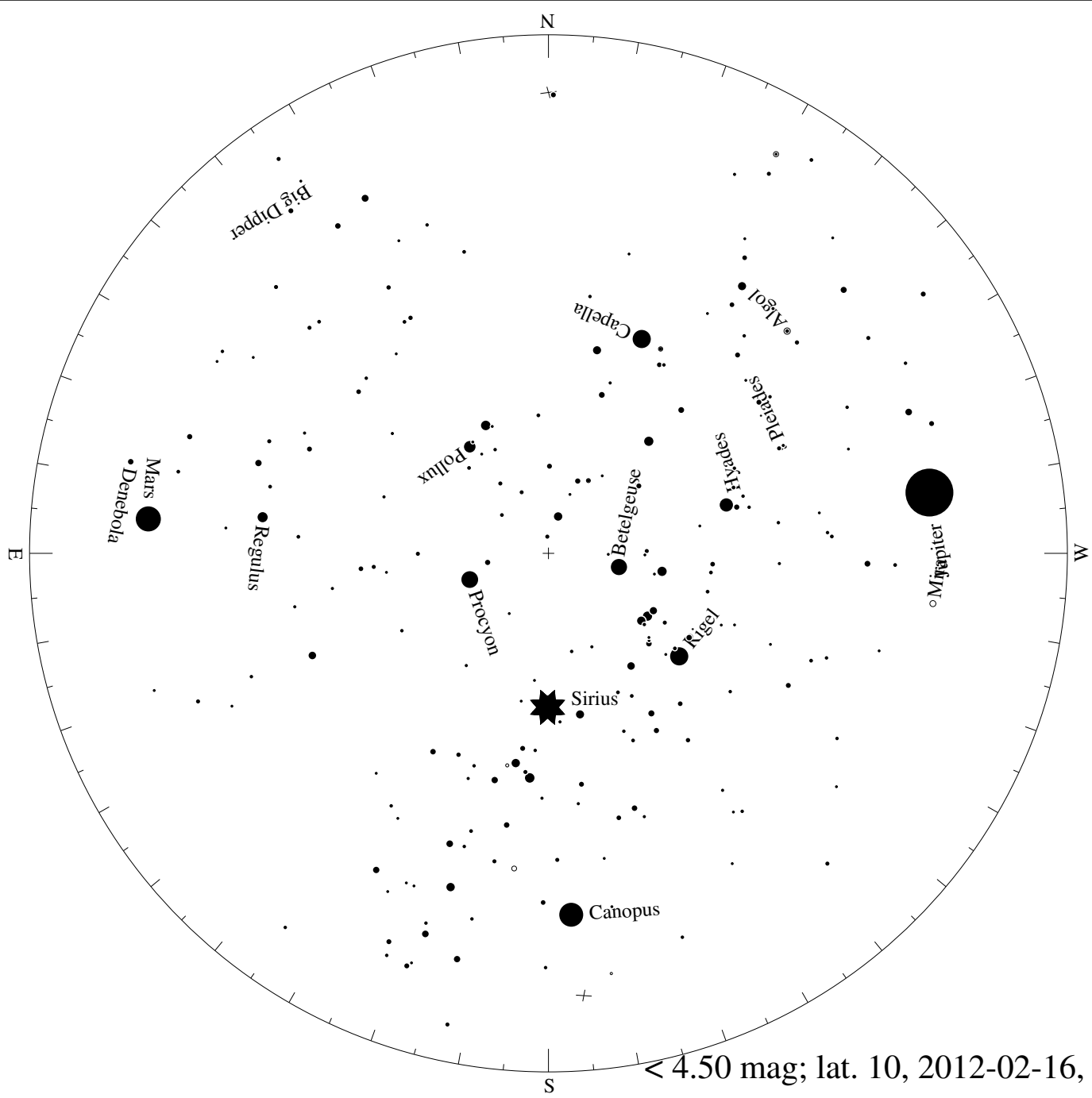


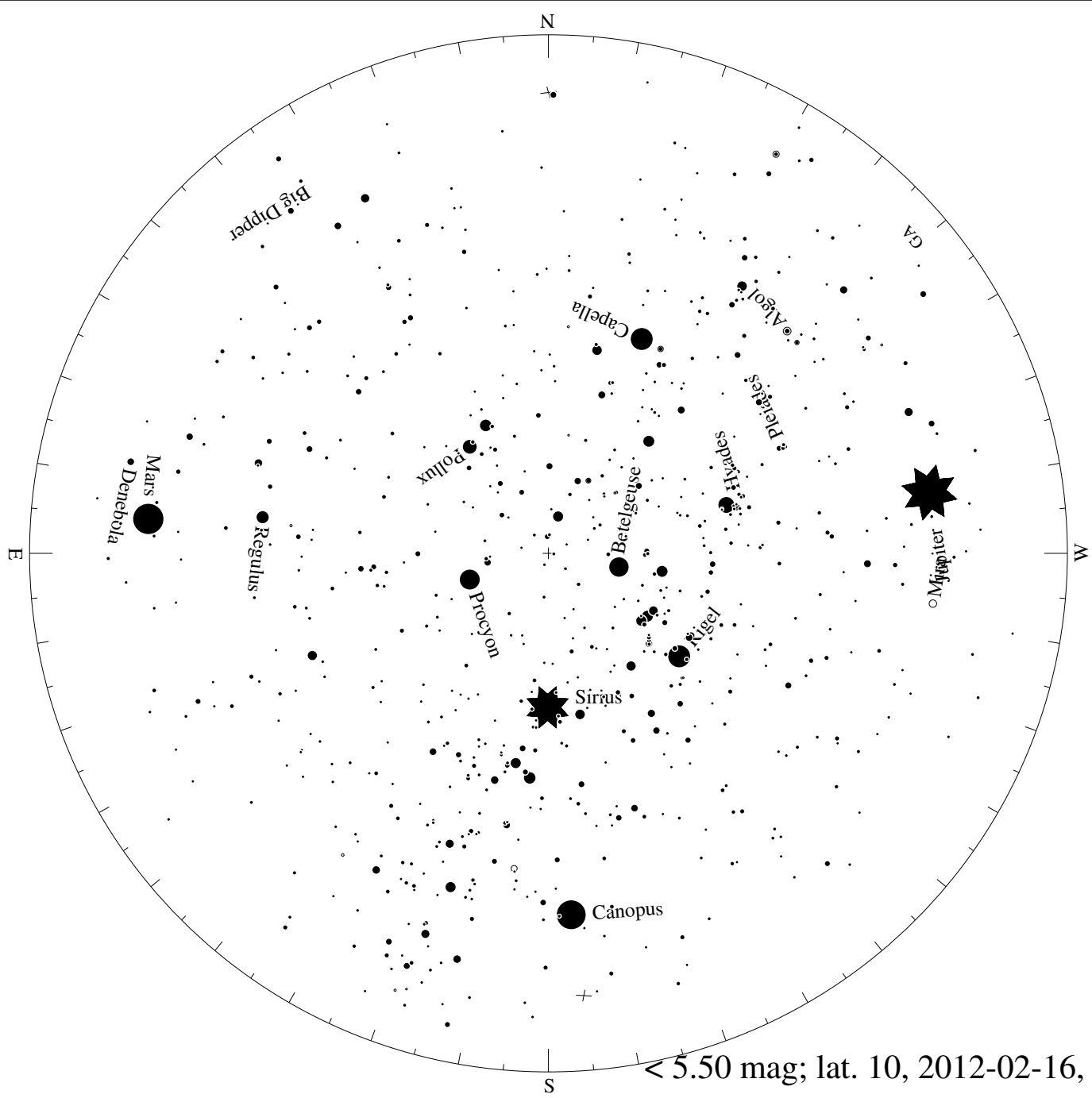
< 0.50 mag; lat. 10, 2012-02-16, 21 h loc. time

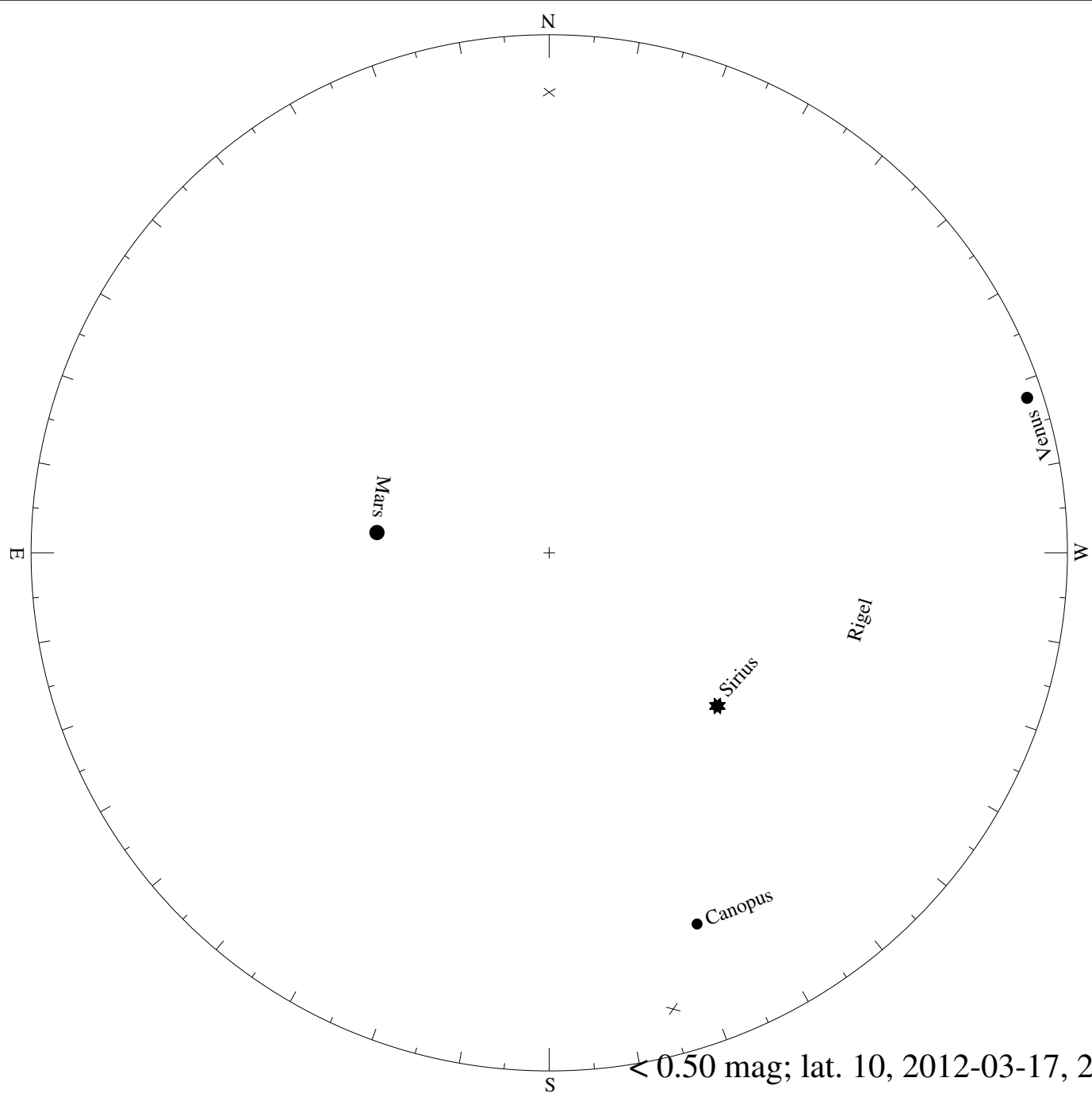




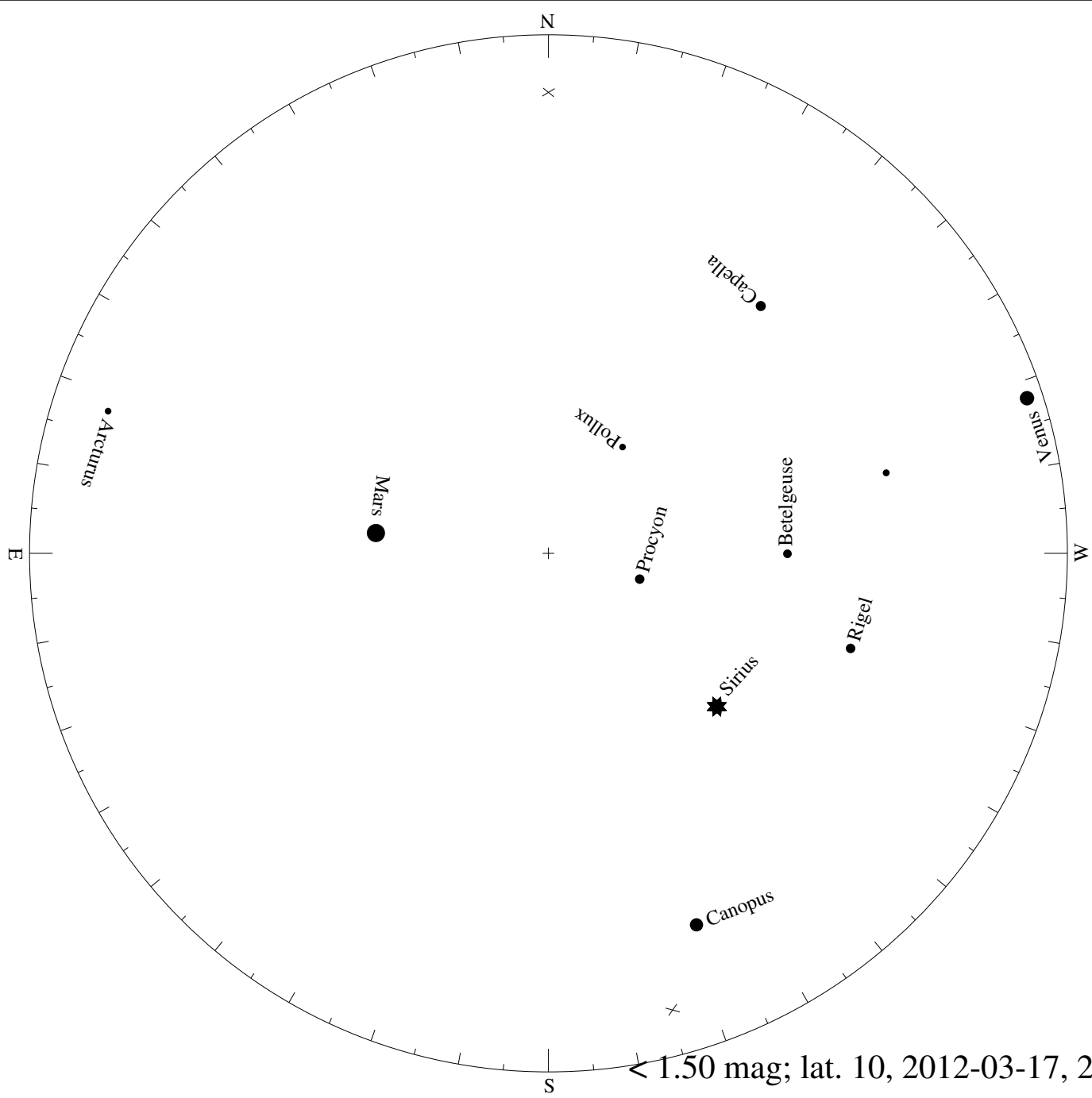




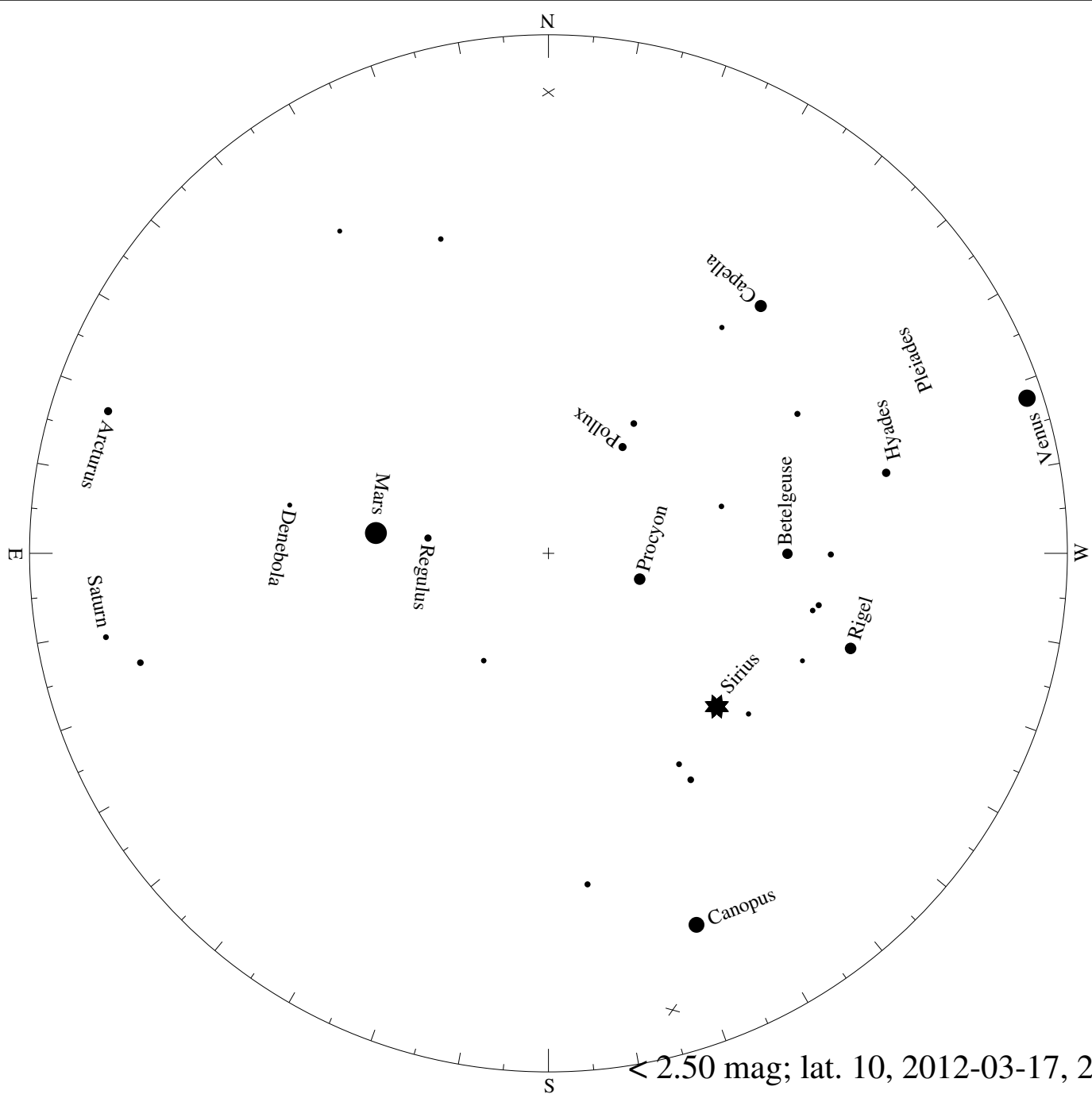


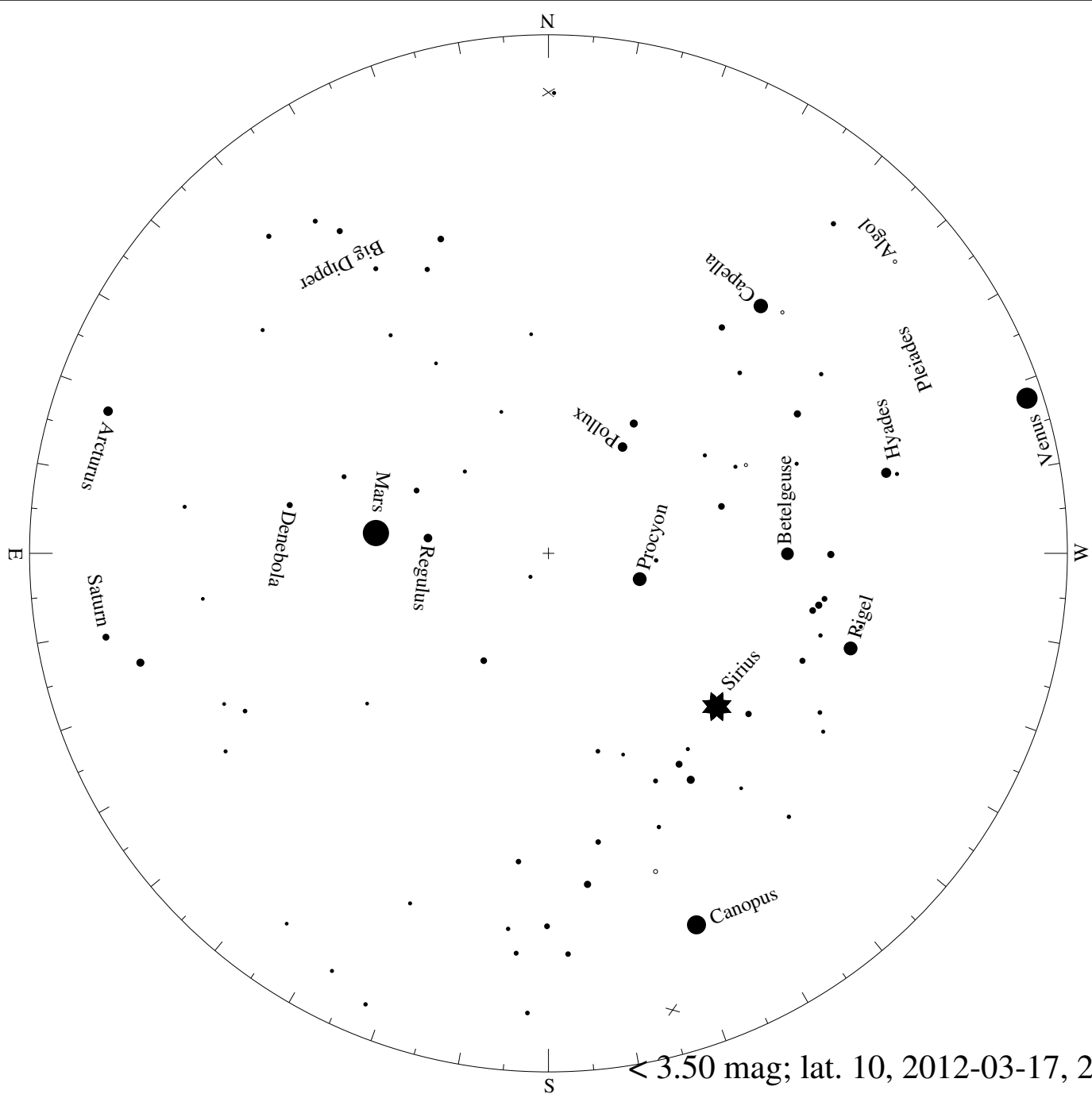


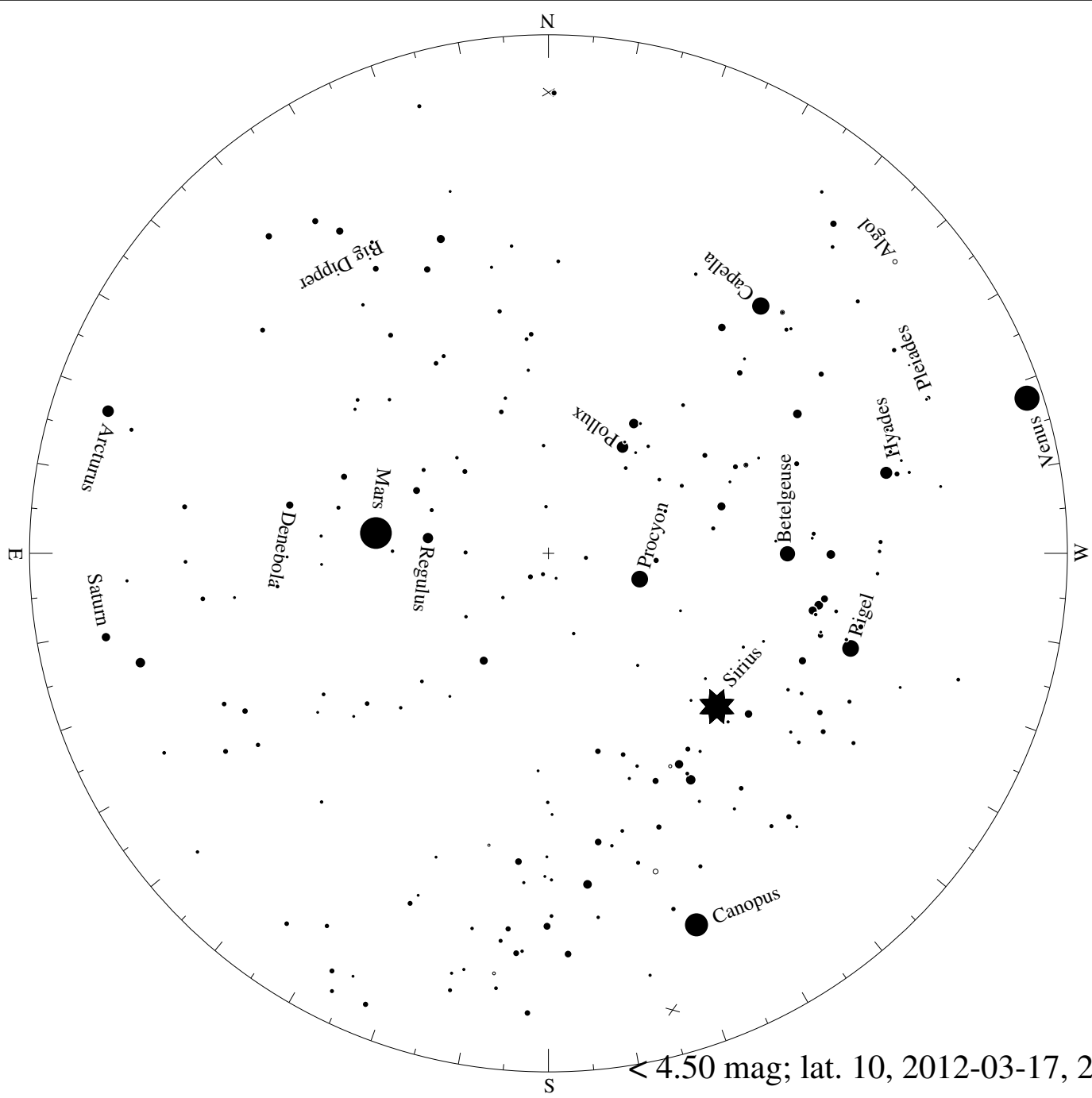
< 0.50 mag; lat. 10, 2012-03-17, 21 h local time

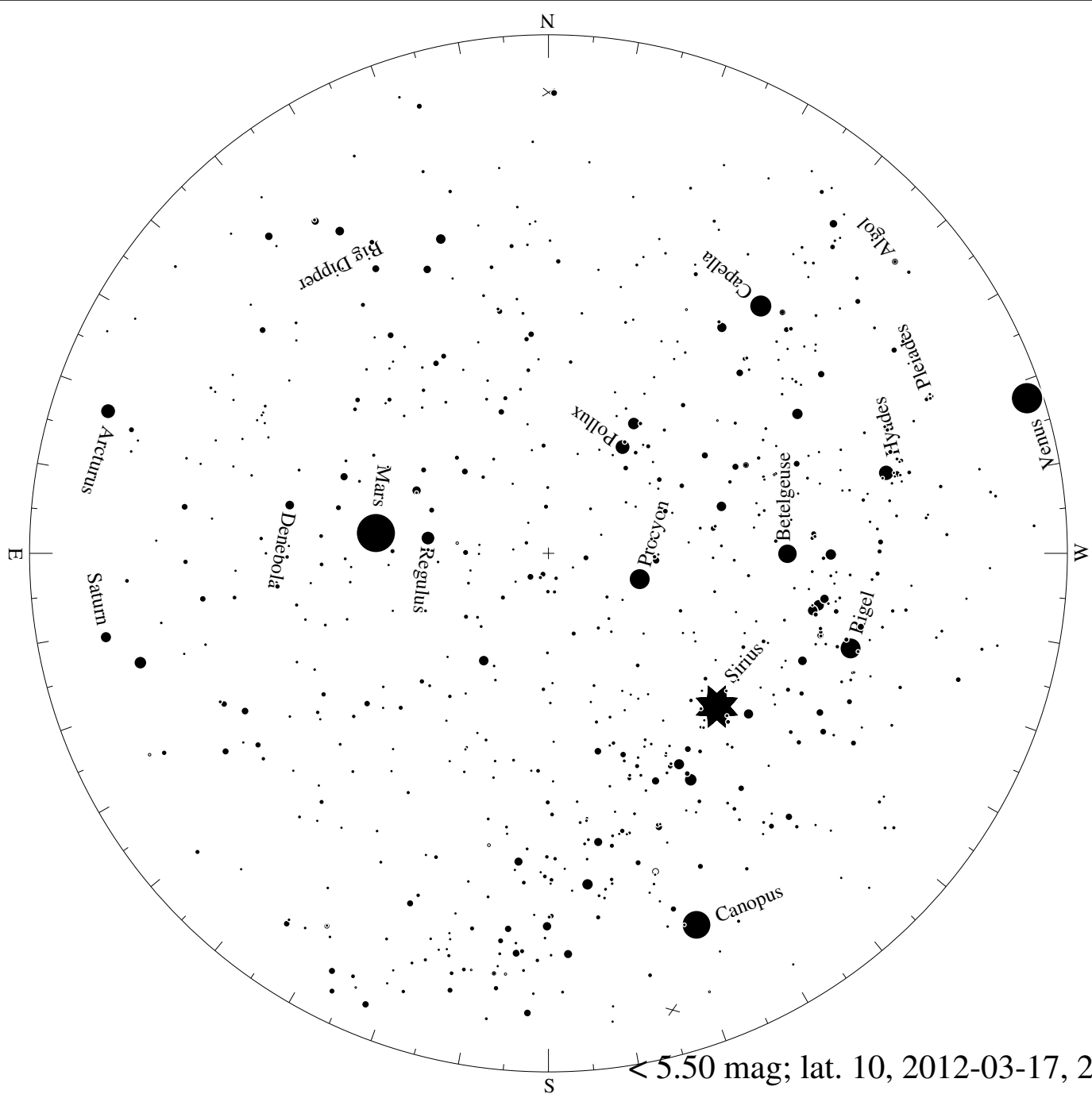


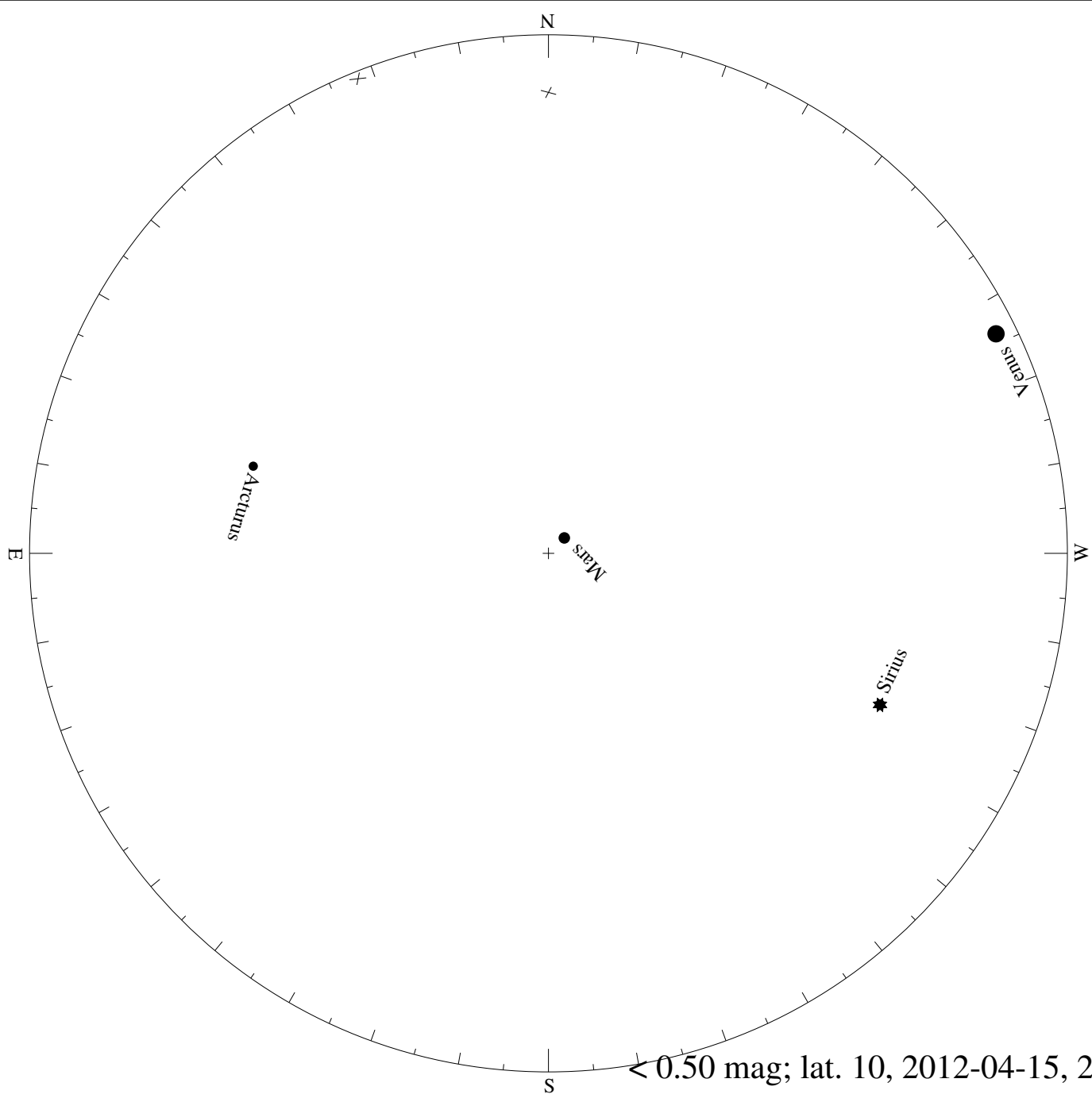
< 1.50 mag; lat. 10, 2012-03-17, 21 h local time

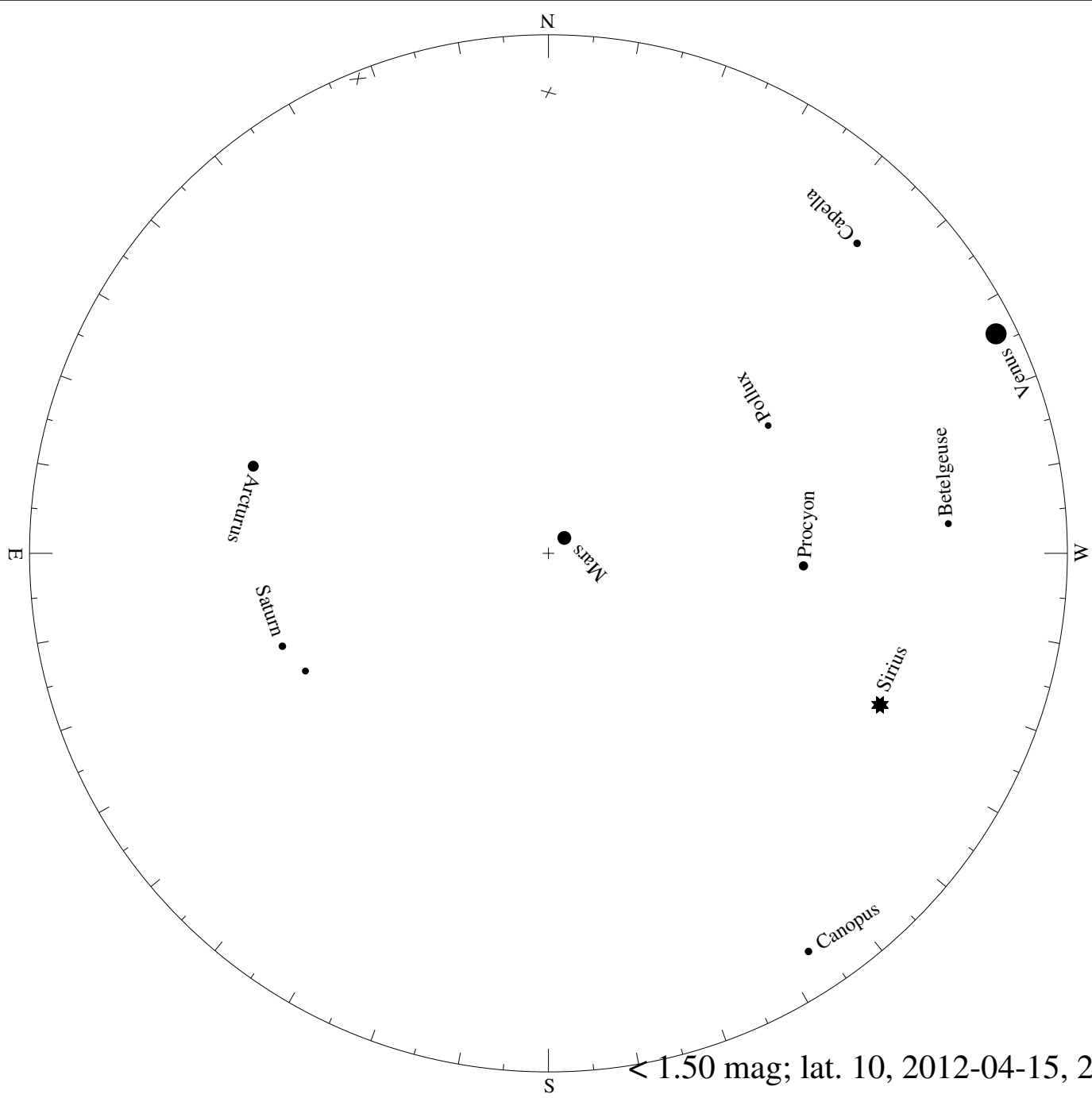




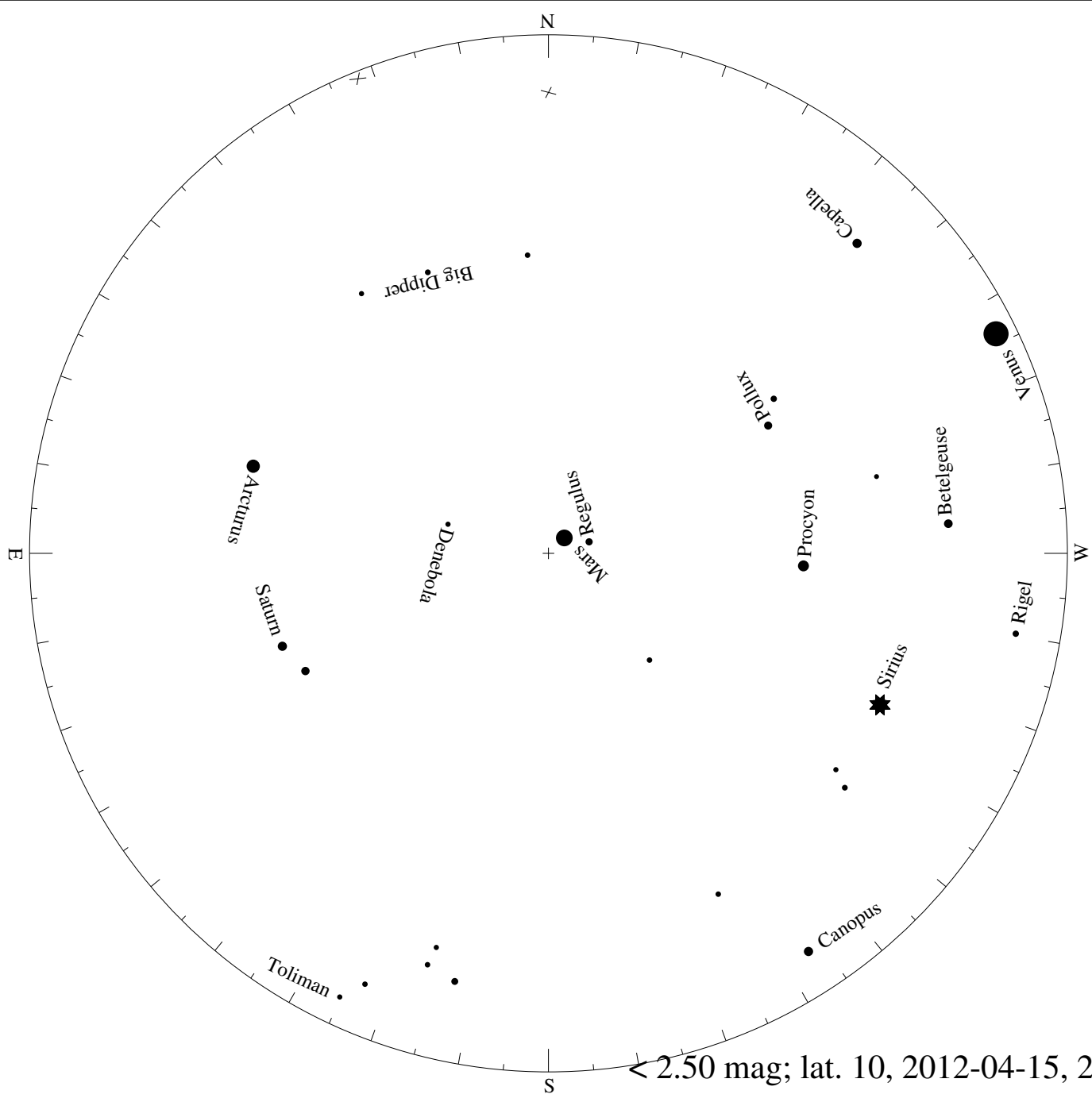


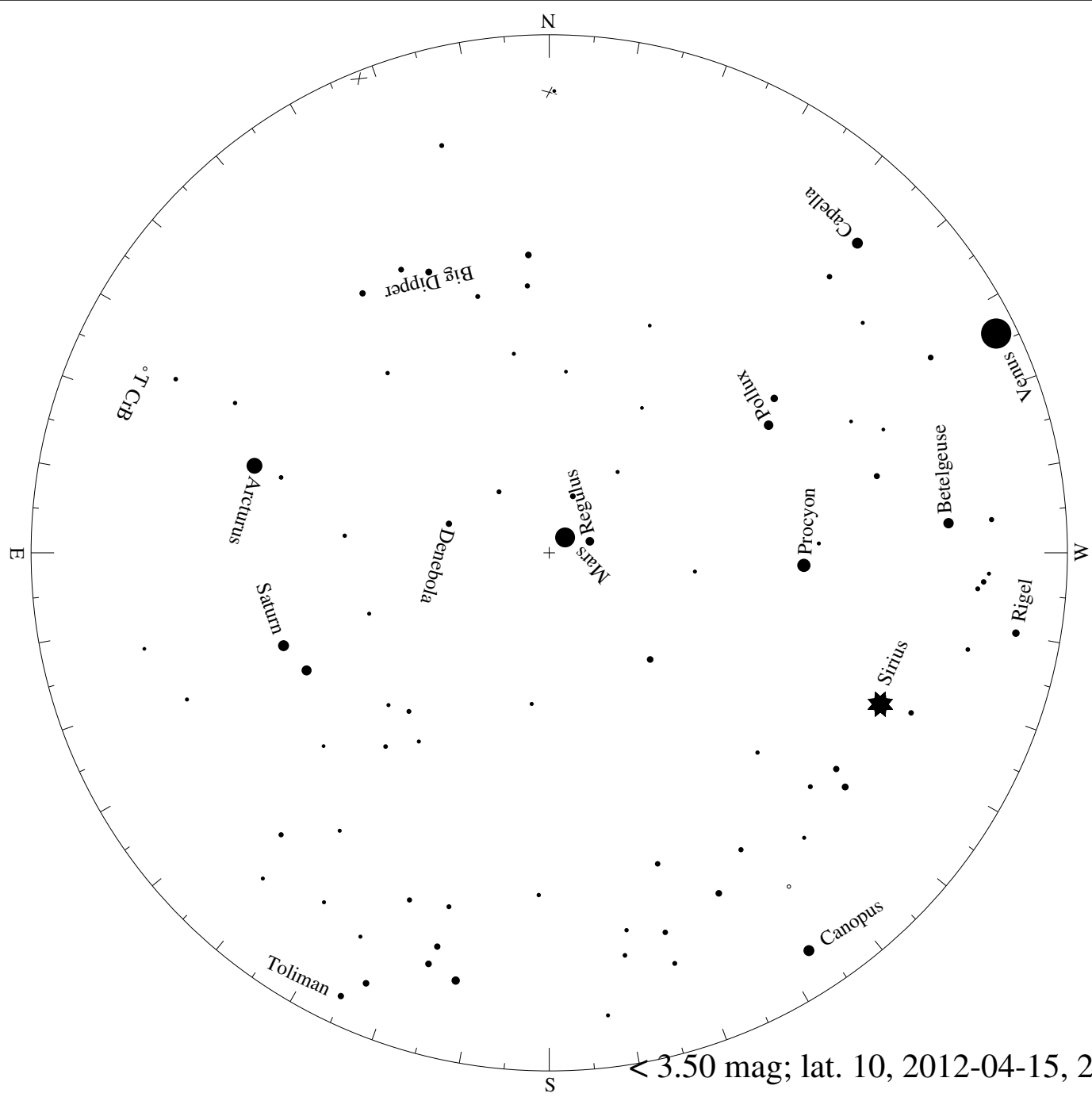




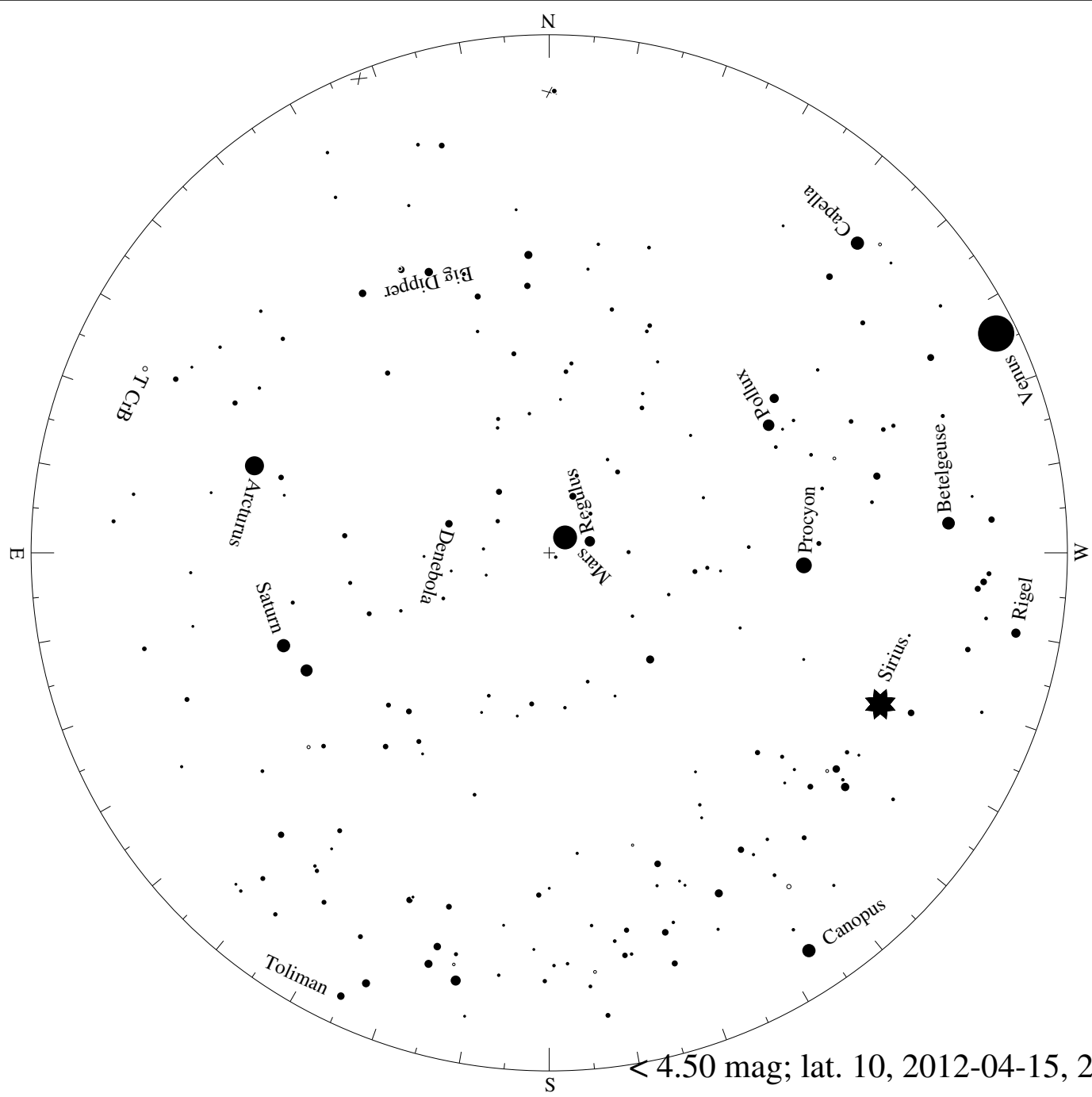


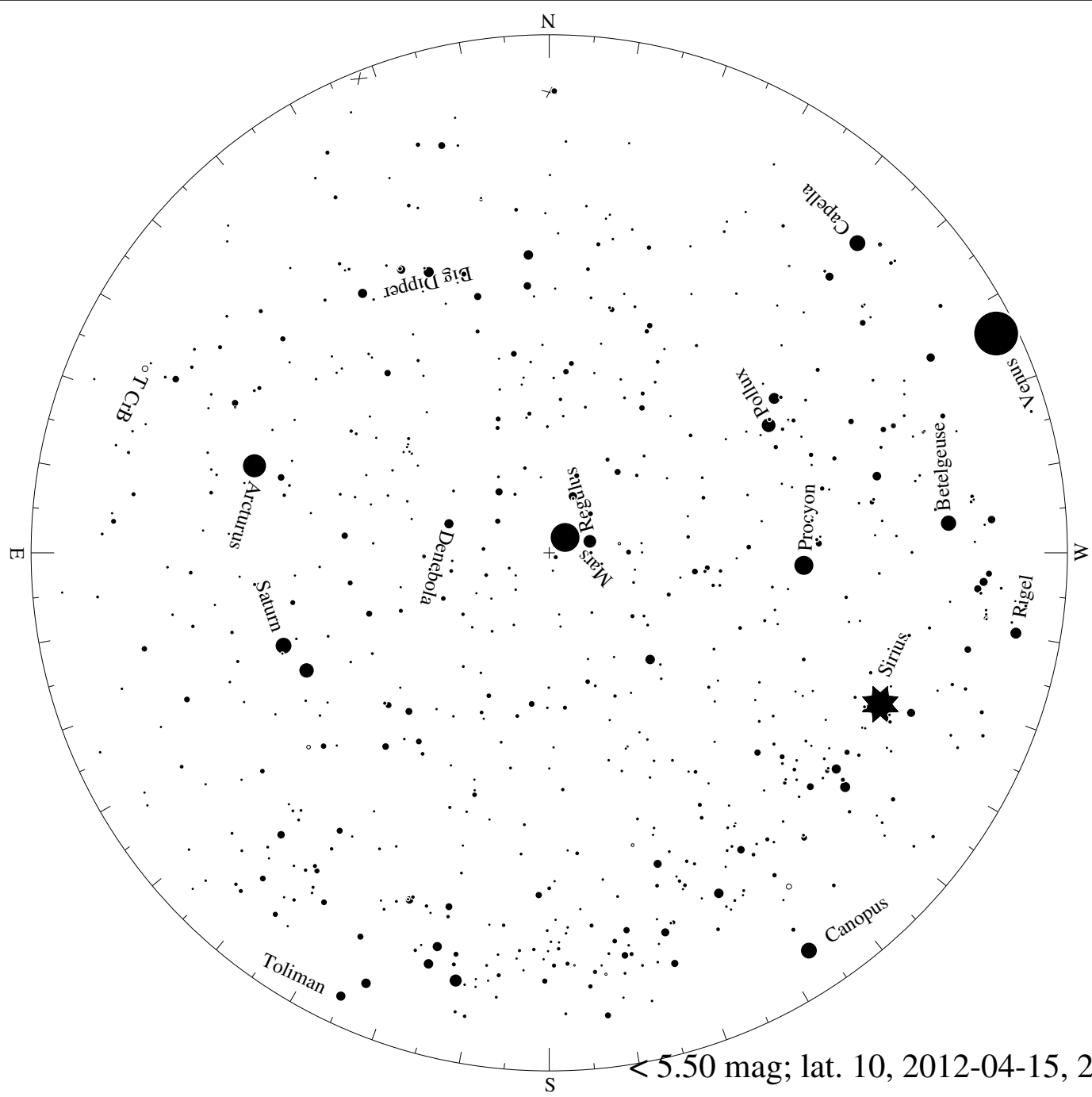
< 1.50 mag; lat. 10, 2012-04-15, 21 h local time





< 3.50 mag; lat. 10, 2012-04-15, 21 h local time





< 5.50 mag; lat. 10, 2012-04-15, 21 h local time