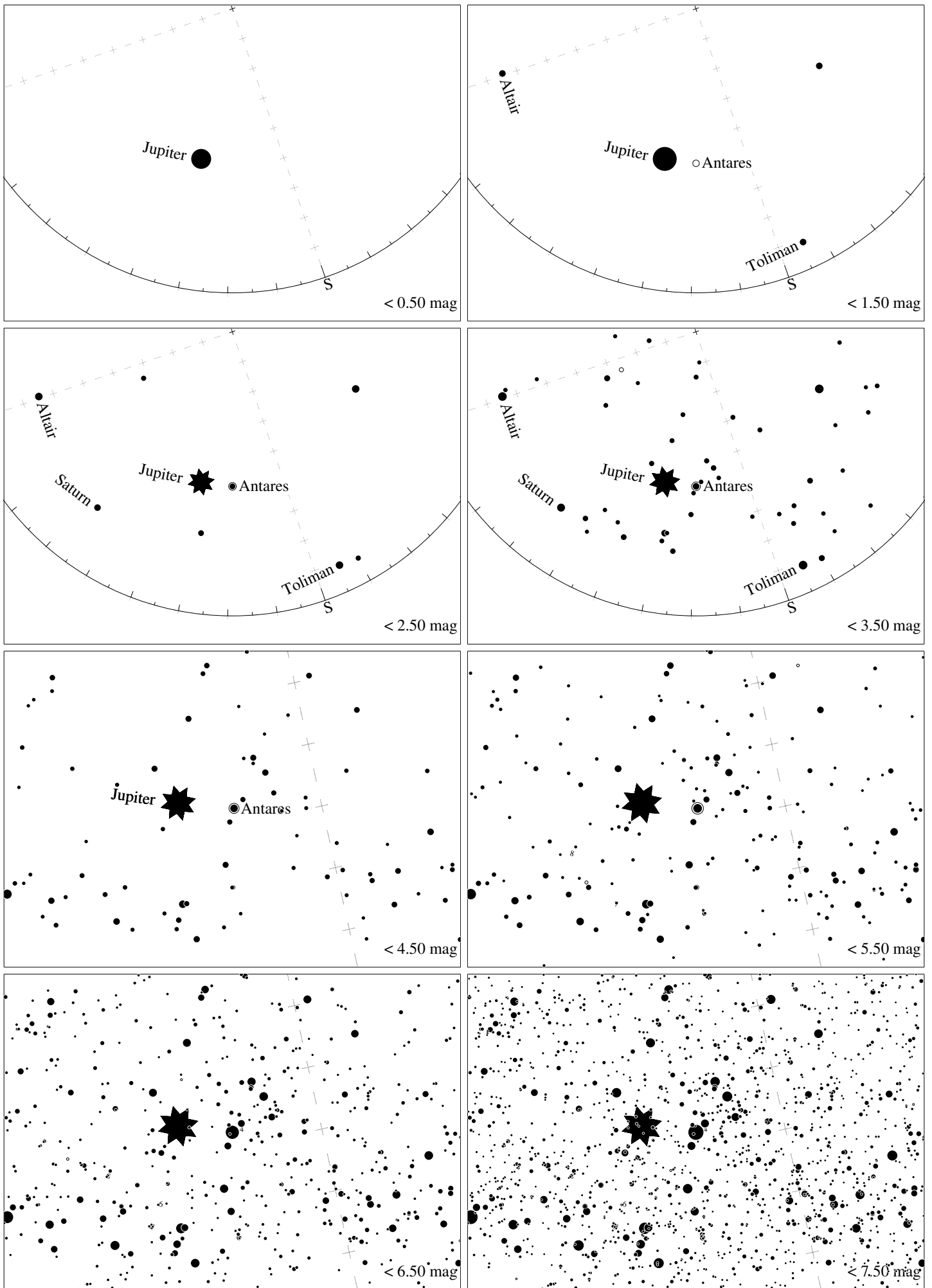
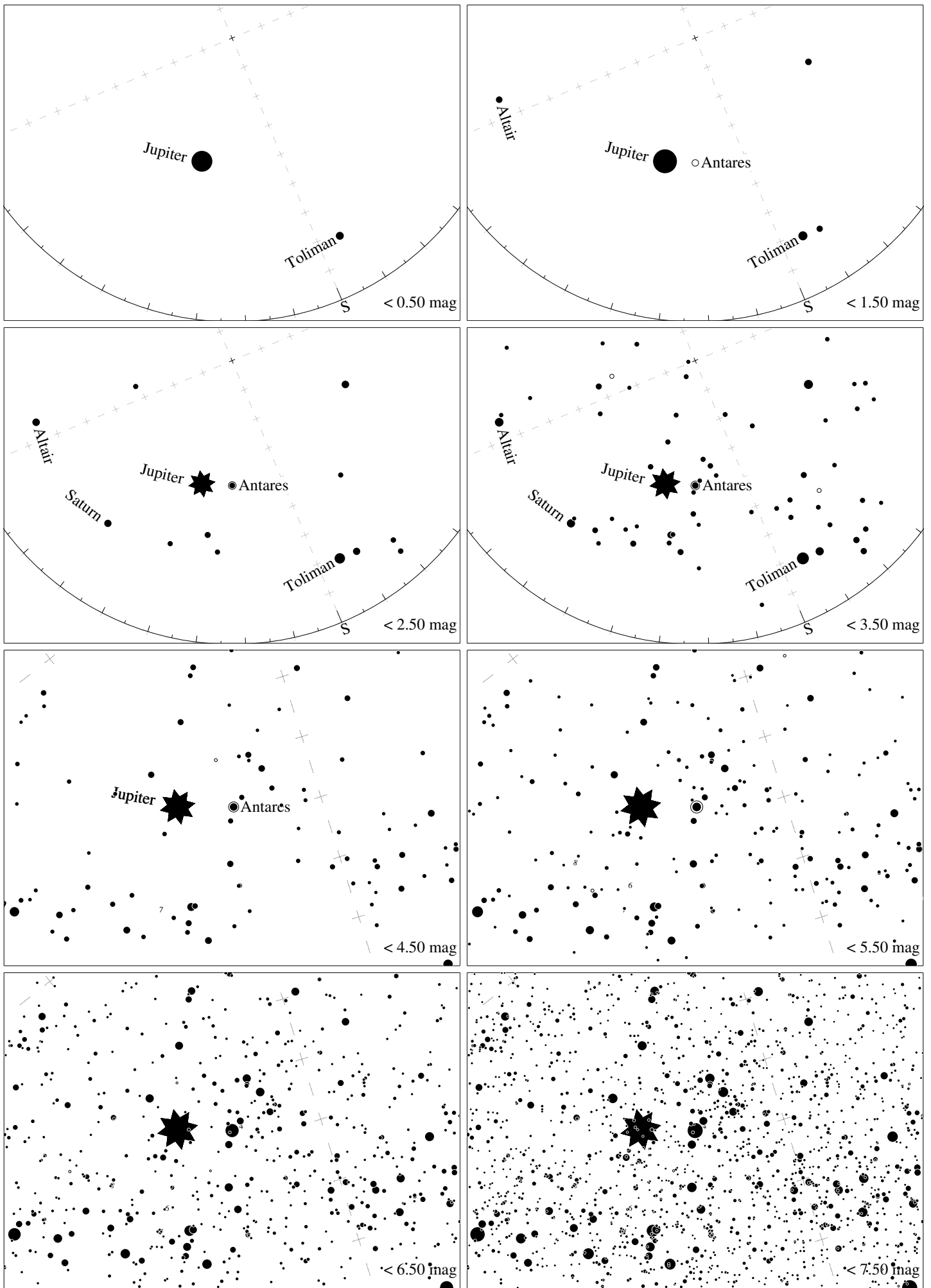


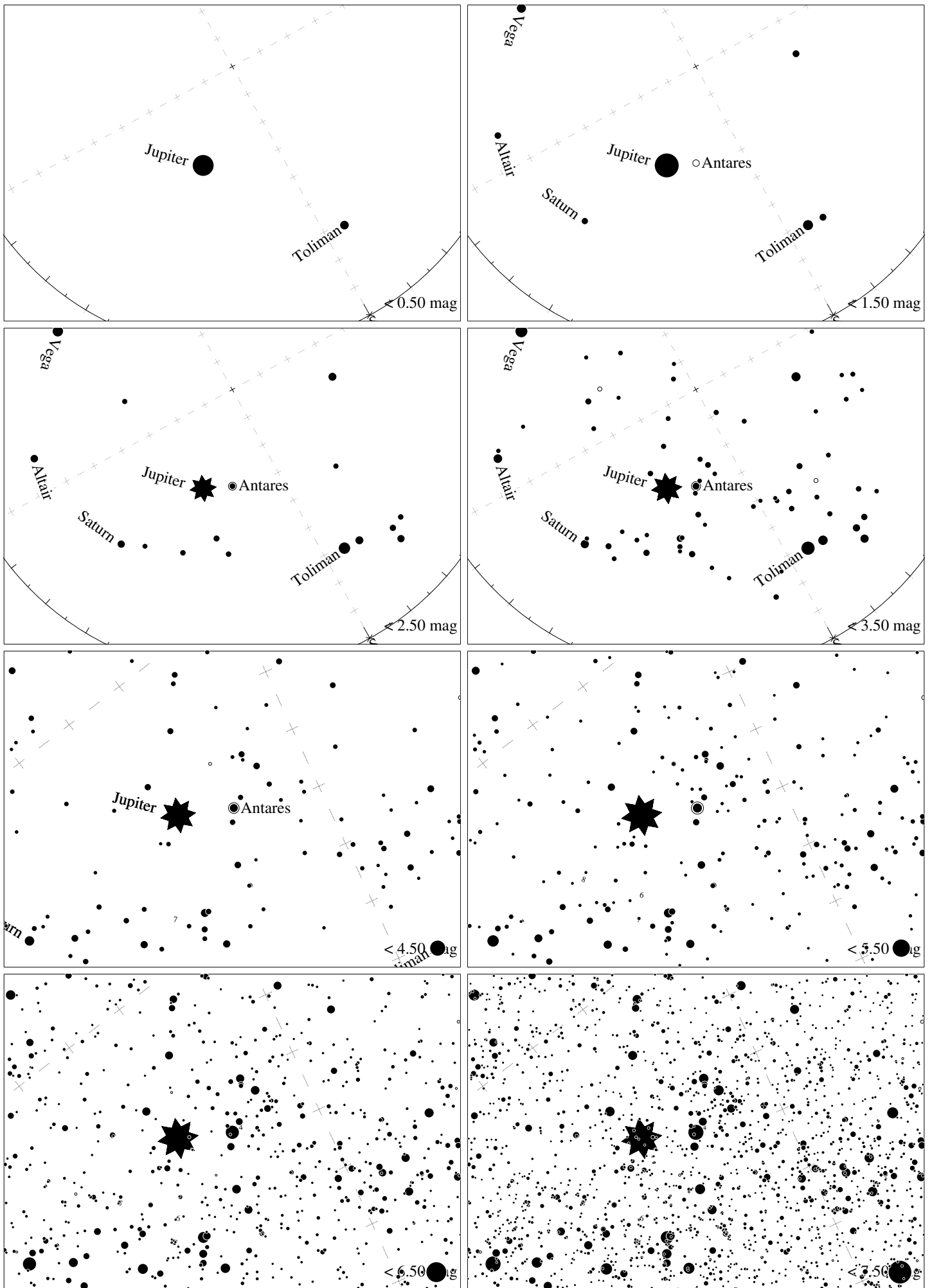
Maps for Globe at Night latitude  $30^\circ$ , 2019-06-28, 21 h local time (Sun at  $-21^\circ$ ), transparent air. Lines from N(E,S,W) to zenith shown (crosses each  $10^\circ$ ). Centered on Antares ( $\alpha$  Scorpii), which is  $17^\circ$  to the left from S, at  $32^\circ$  height. Detailed maps  $50^\circ$  vertically, the first four maps  $100^\circ$ . *Jan Hollan, CzechGlobe*



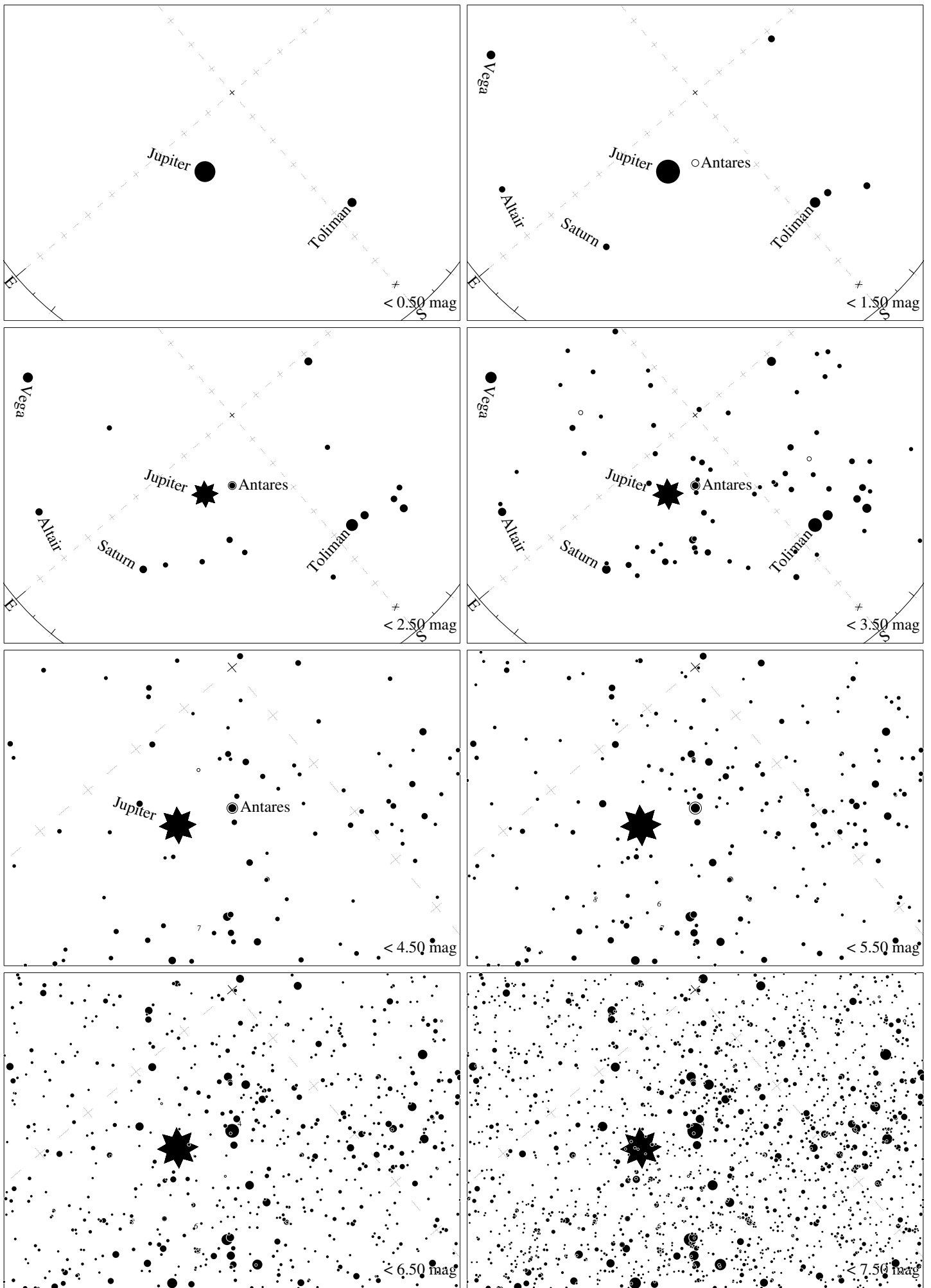
Maps for Globe at Night latitude  $20^\circ$ , 2019-06-28, 21 h local time (Sun at  $-28^\circ$ ), transparent air. Lines from N(E,S,W) to zenith shown (crosses each  $10^\circ$ ). Centered on Antares ( $\alpha$  Scorpii), which is  $19^\circ$  to the left from S, at  $41^\circ$  height. Detailed maps  $50^\circ$  vertically, the first four maps  $100^\circ$ . *Jan Hollan, CzechGlobe*



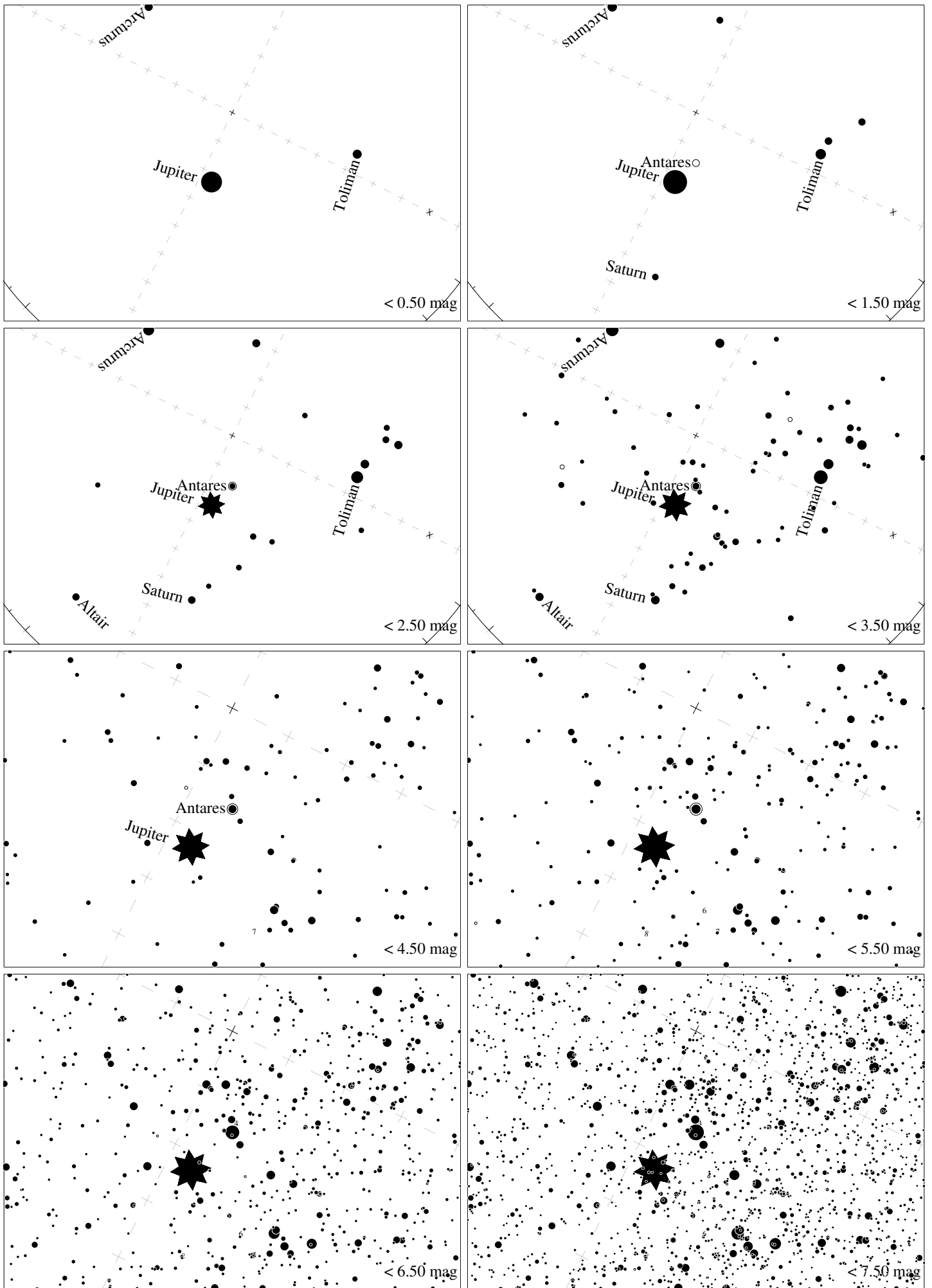
Maps for Globe at Night latitude 10°, 2019-06-28, 21 h local time (Sun at  $-34^\circ$ ), transparent air. Lines from N(E,S,W) to zenith shown (crosses each  $10^\circ$ ). Centered on Antares ( $\alpha$  Scorpii), which is  $23^\circ$  to the left from S, at  $50^\circ$  height. Detailed maps  $50^\circ$  vertically, the first four maps  $100^\circ$ . *Jan Hollan, CzechGlobe*



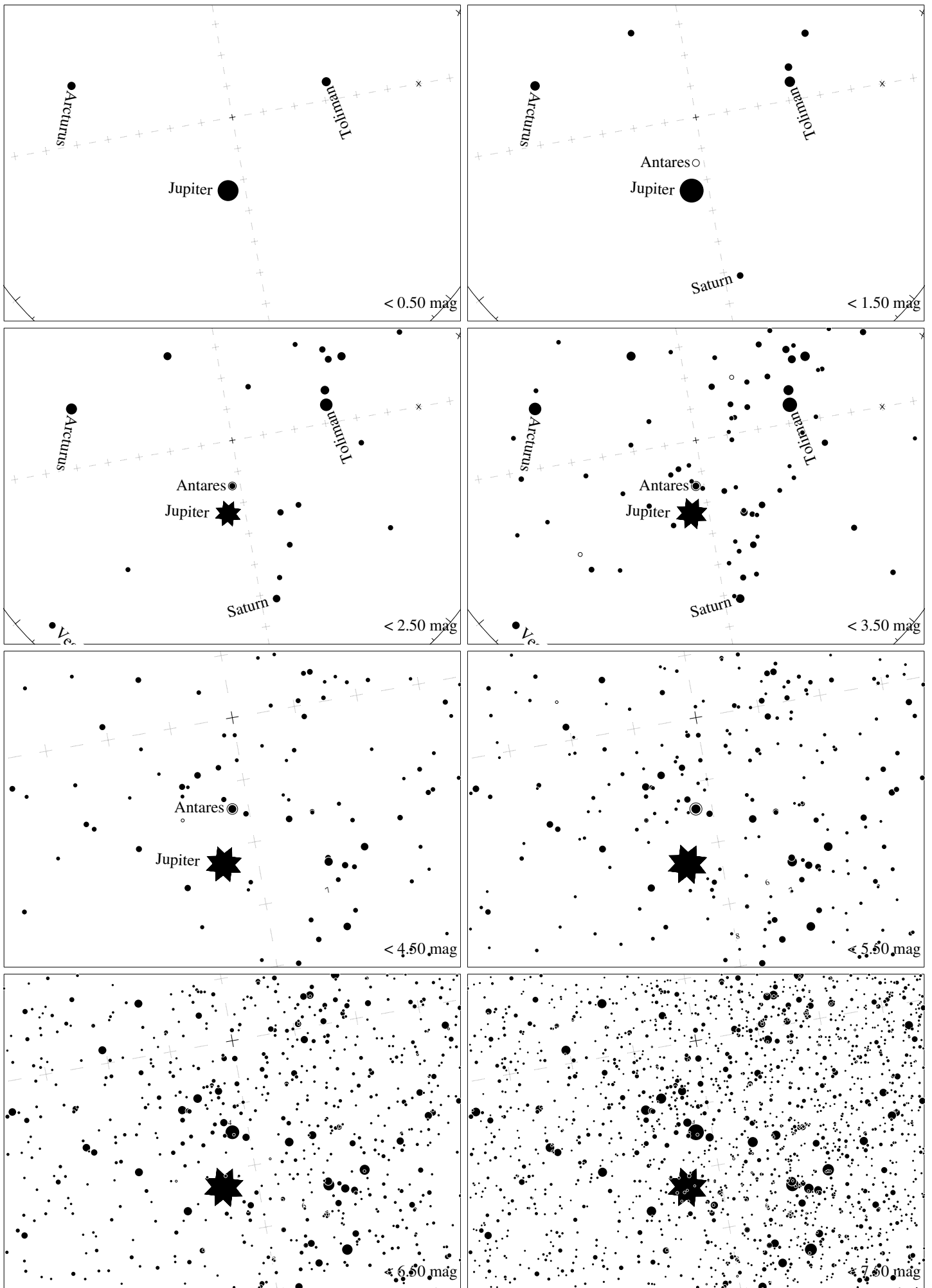
Maps for Globe at Night latitude  $0^\circ$ , 2019-06-28, 21 h local time (Sun at  $-40^\circ$ ), transparent air. Lines from N(E,S,W) to zenith shown (crosses each  $10^\circ$ ). Centered on Antares ( $\alpha$  Scorpii), which is  $29^\circ$  to the left from S, at  $59^\circ$  height. Detailed maps  $50^\circ$  vertically, the first four maps  $100^\circ$ . *Jan Hollan, CzechGlobe*



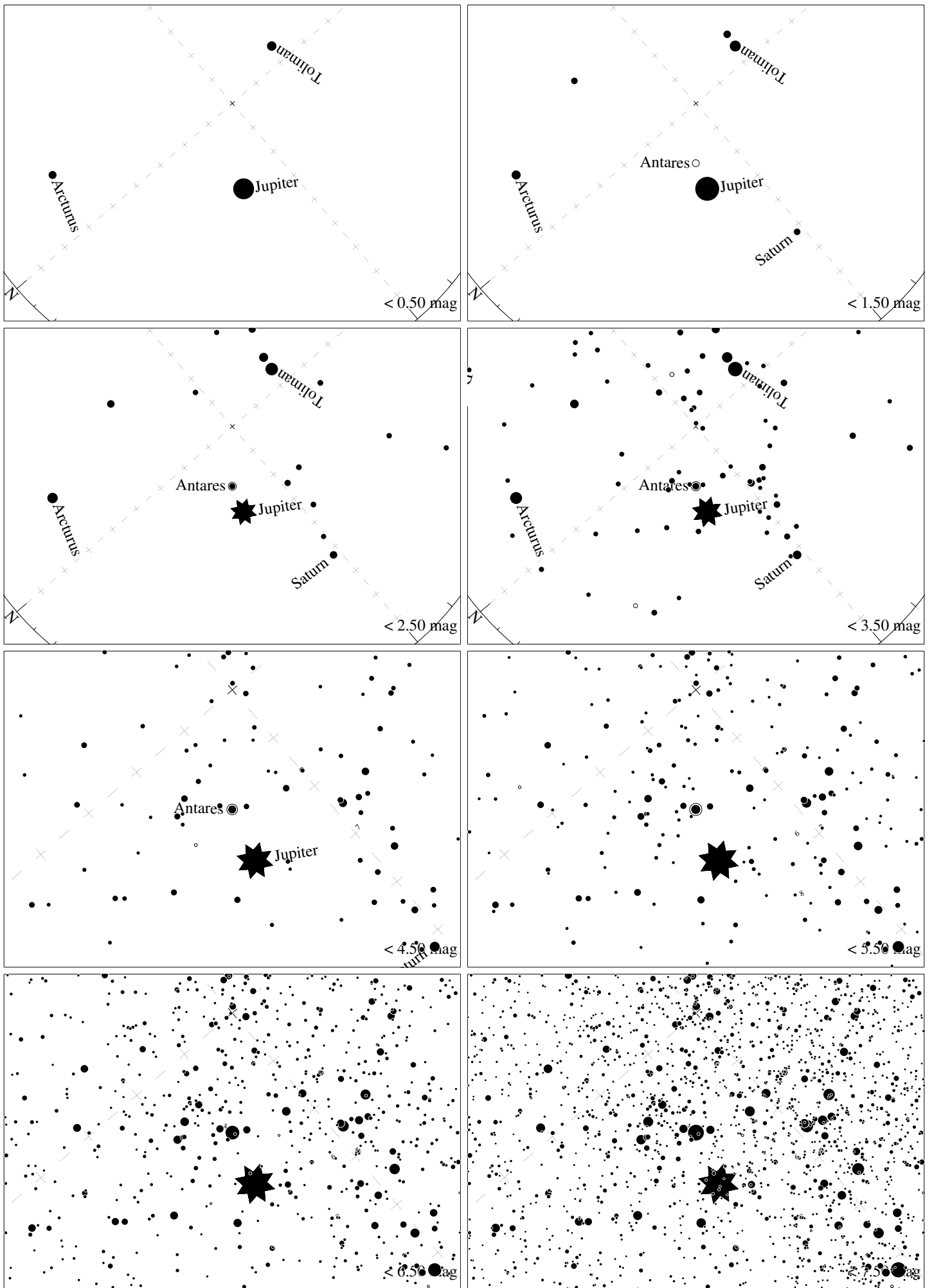
Maps for Globe at Night latitude  $-10^\circ$ , 2019-06-28, 21 h local time (Sun at  $-44^\circ$ ), transparent air. Lines from N(E,S,W) to zenith shown (crosses each  $10^\circ$ ). Centered on Antares ( $\alpha$  Scorpii), which is  $40^\circ$  to the left from S, at  $68^\circ$  height. Detailed maps  $50^\circ$  vertically, the first four maps  $100^\circ$ . *Jan Hollan, CzechGlobe*



Maps for Globe at Night latitude  $-20^\circ$ , 2019-06-28, 21 h local time (Sun at  $-47^\circ$ ), transparent air. Lines from N(E,S,W) to zenith shown (crosses each  $10^\circ$ ). Centered on Antares ( $\alpha$  Scorpii), which is  $63^\circ$  to the left from S, at  $74^\circ$  height. Detailed maps  $50^\circ$  vertically, the first four maps  $100^\circ$ . *Jan Hollan, CzechGlobe*

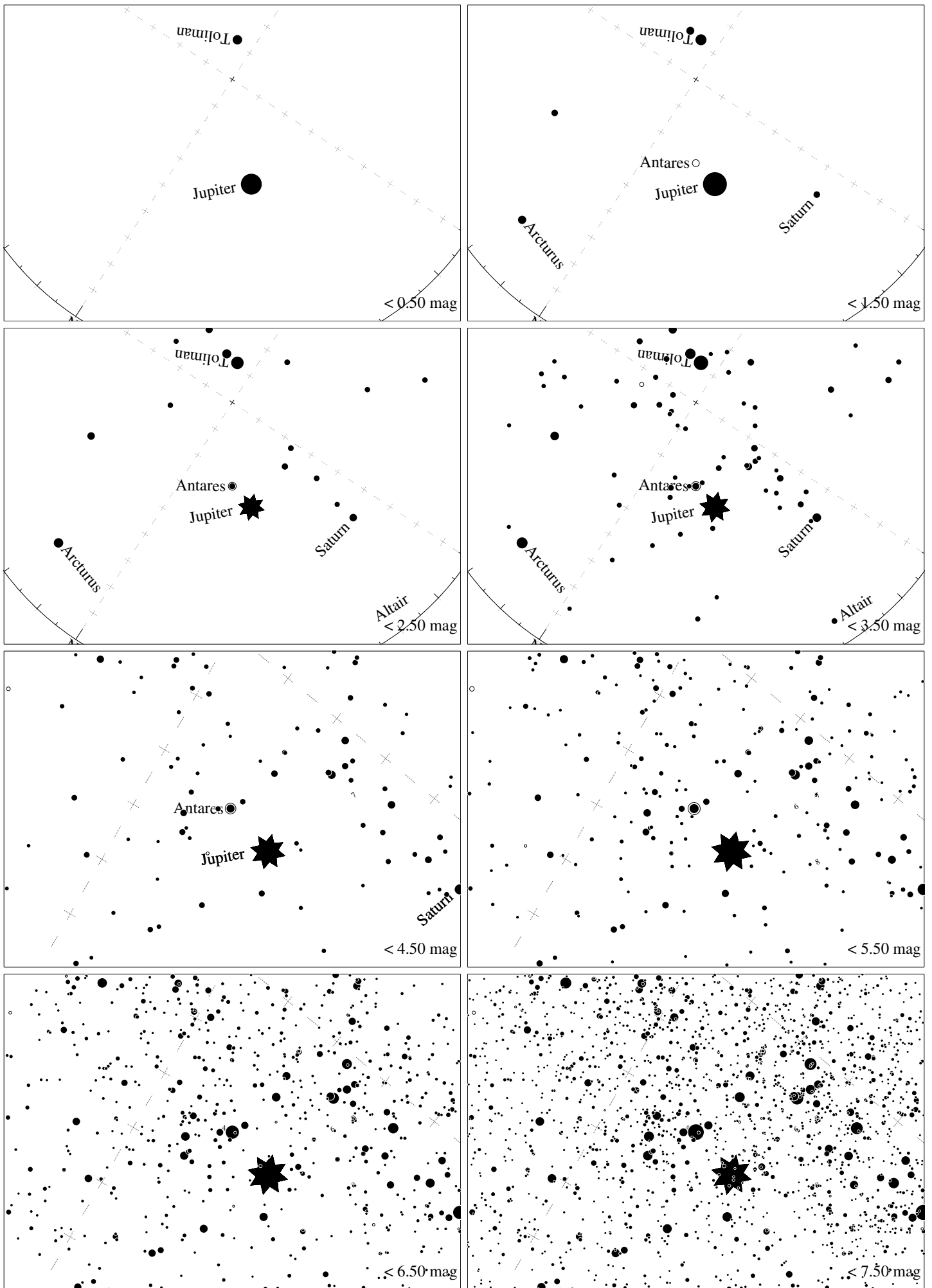


Maps for Globe at Night latitude  $-30^\circ$ , 2019-06-28, 21 h local time (Sun at  $-49^\circ$ ), transparent air. Lines from N(E,S,W) to zenith shown (crosses each  $10^\circ$ ). Centered on Antares ( $\alpha$  Scorpii), which is  $80^\circ$  to the right from N, at  $76^\circ$  height. Detailed maps  $50^\circ$  vertically, the first four maps  $100^\circ$ . *Jan Hollan, CzechGlobe*



Maps for Globe at Night latitude  $-40^\circ$ , 2019-06-28, 21 h local time (Sun at  $-48^\circ$ ), transparent air. Lines from N(E,S,W) to zenith shown (crosses each  $10^\circ$ ). Centered on Antares ( $\alpha$  Scorpii), which is  $49^\circ$  to the right from N, at  $71^\circ$  height. Detailed maps  $50^\circ$  vertically, the first four maps  $100^\circ$ . *Jan Hollan, CzechGlobe*





Maps for Globe at Night latitude  $-50^\circ$ , 2019-06-28, 21 h local time (Sun at  $-46^\circ$ ), transparent air. Lines from N(E,S,W) to zenith shown (crosses each  $10^\circ$ ). Centered on Antares ( $\alpha$  Scorpii), which is  $33^\circ$  to the right from N, at  $63^\circ$  height. Detailed maps  $50^\circ$  vertically, the first four maps  $100^\circ$ . *Jan Hollan, CzechGlobe*