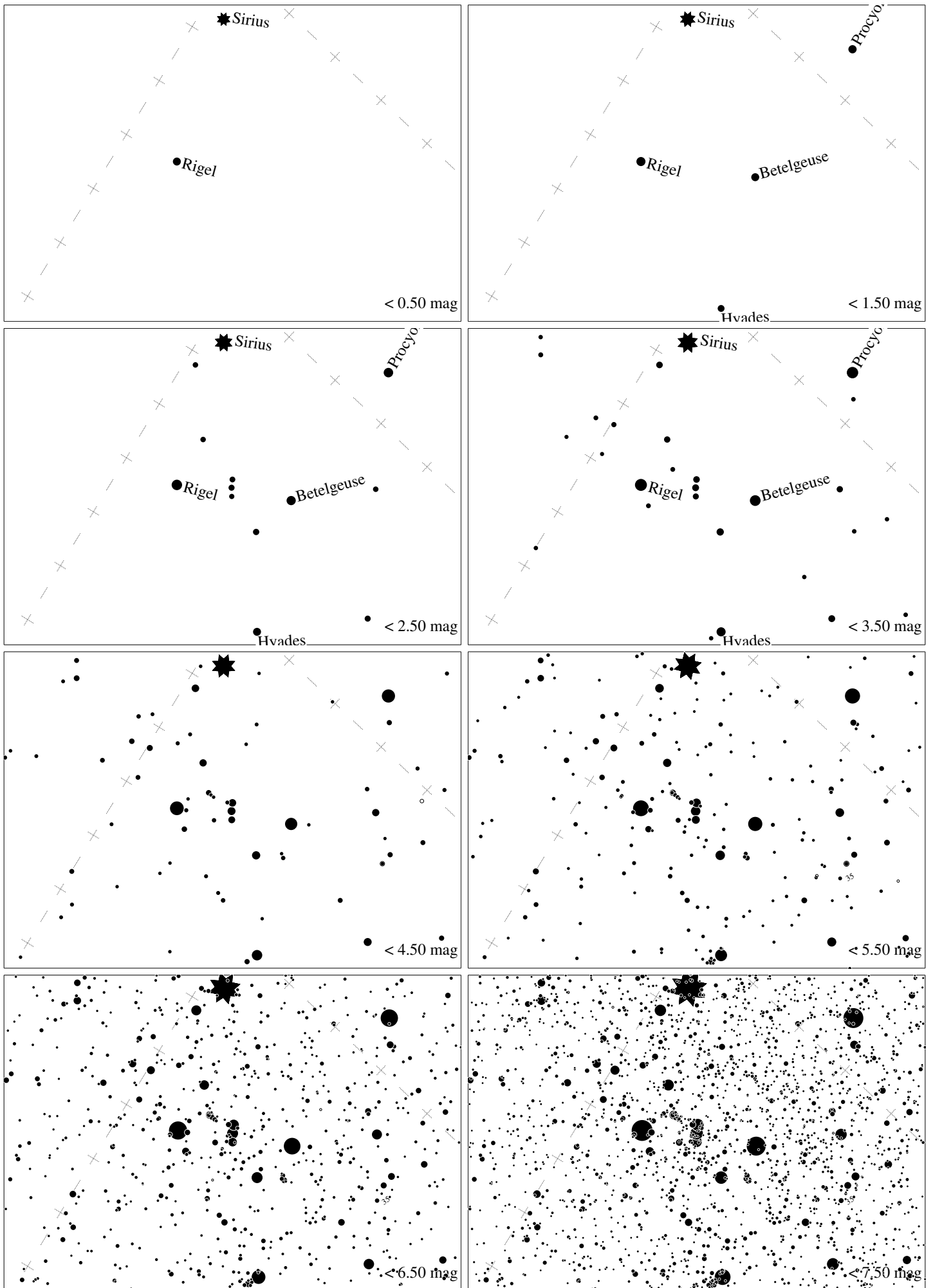


Maps for Globe at Night at latitude  $-20^\circ$ , 2017-01-23, 21 h local time (Sun at  $-29^\circ$ ), transparent air. Lines from N(E,S,W) to zenith shown (crosses each  $10^\circ$ ). Orion's belt is  $18^\circ$  to the right from N, at  $70^\circ$  height. Star clusters M 41 and M 35 marked when appropriate. Map vertical size is  $50^\circ$ . *Jan Hollan, CzechGlobe*



Maps for Globe at Night at latitude  $-20^\circ$ , 2017-02-22, 21 h local time (Sun at  $-34^\circ$ ), transparent air. Lines from N(E,S,W) to zenith shown (crosses each  $10^\circ$ ). Orion's belt is  $54^\circ$  to the left from N, at  $60^\circ$  height. Star clusters M 41 and M35 marked when appropriate. Map vertical size is  $50^\circ$ . *Jan Hollan, CzechGlobe*