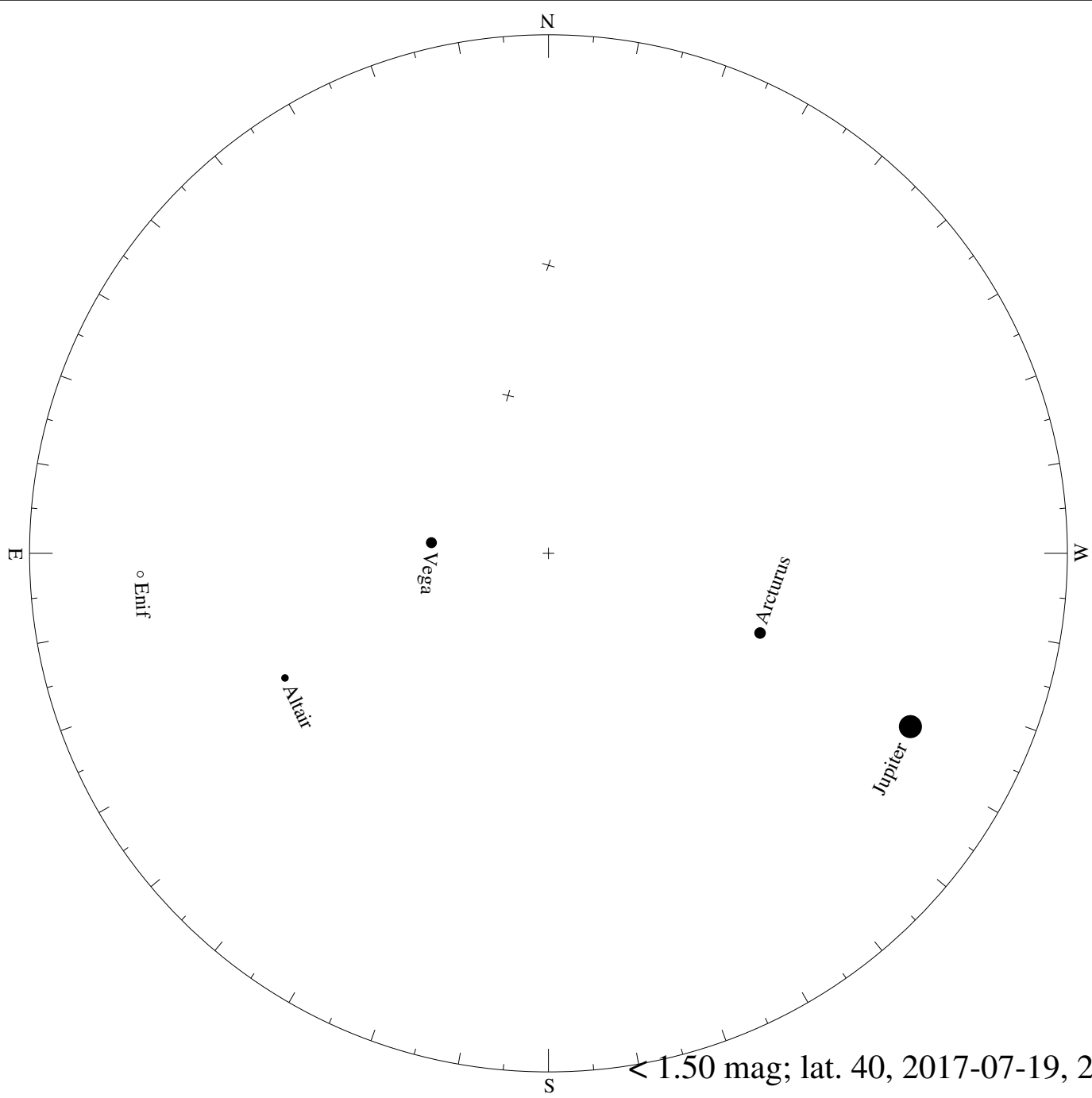
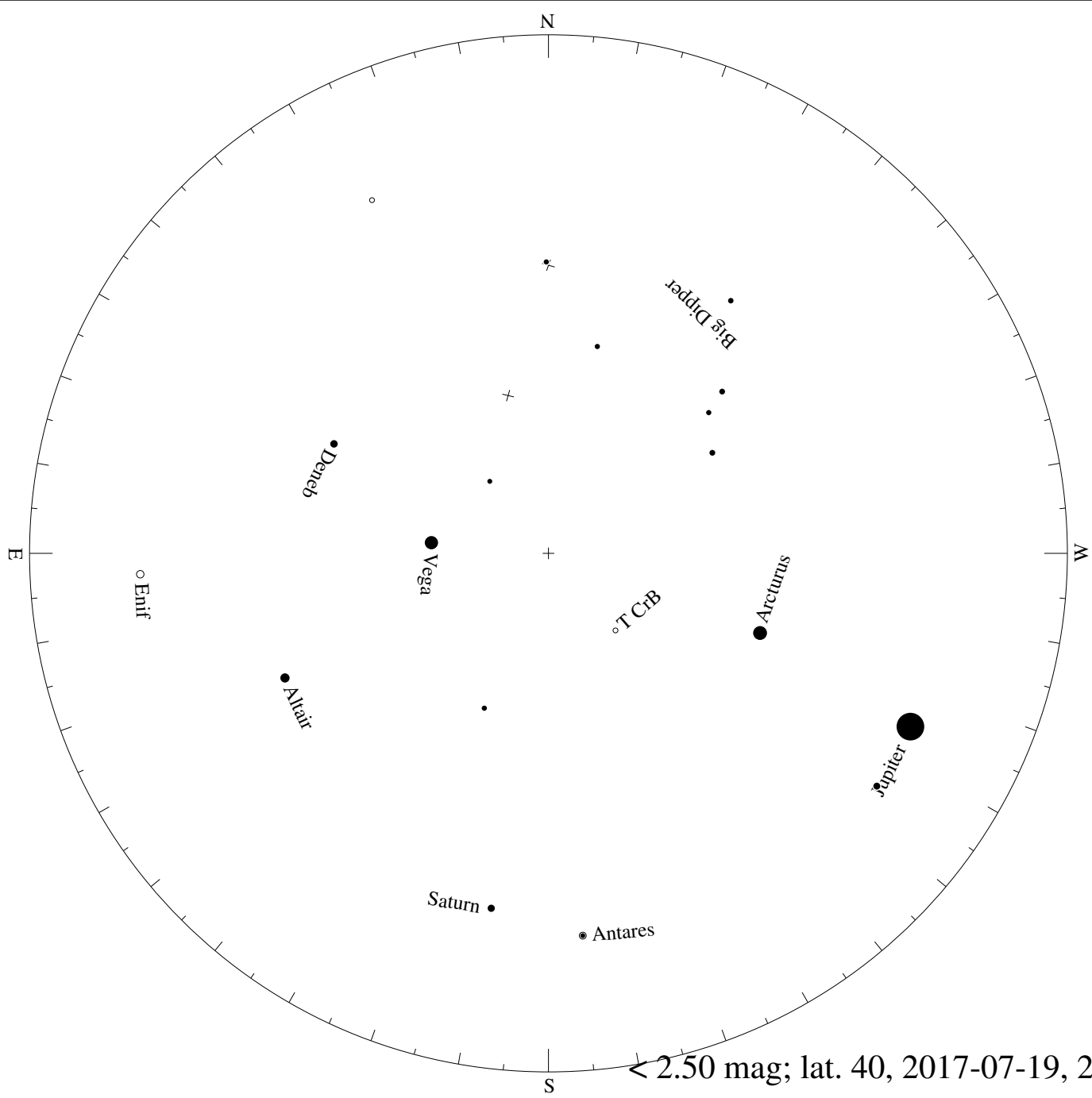


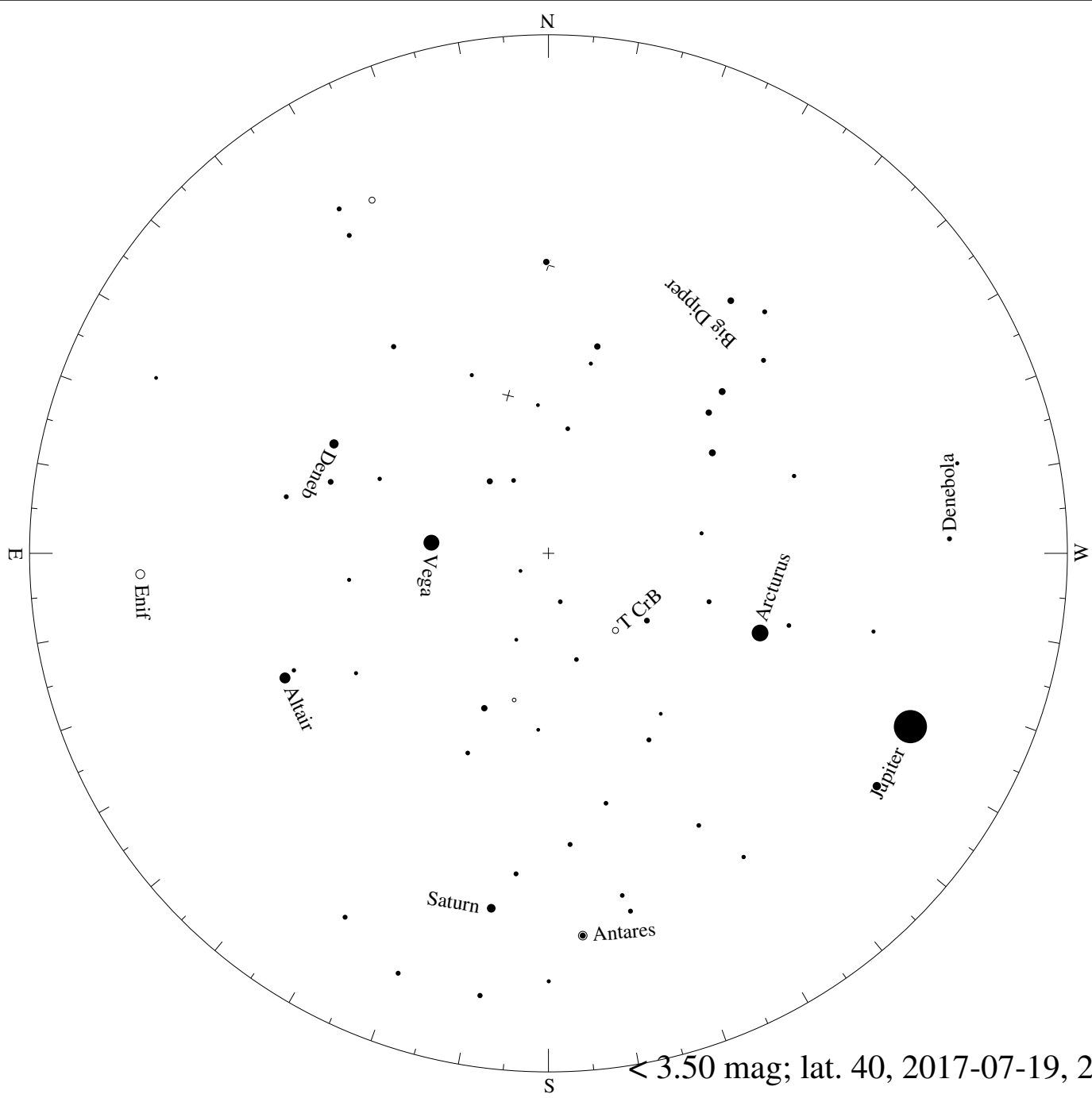
< 0.50 mag; lat. 40, 2017-07-19, 21 h local time



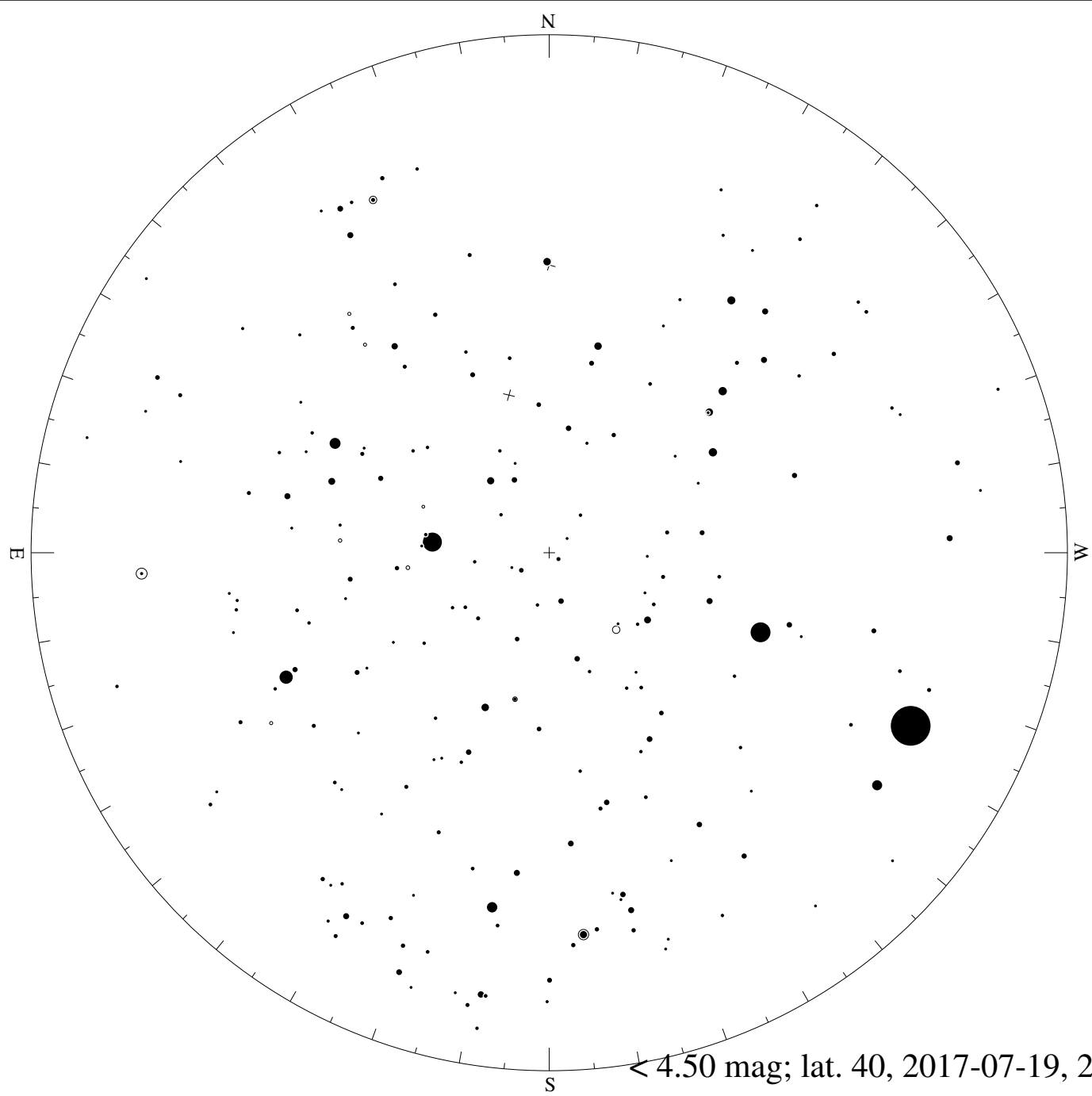
< 1.50 mag; lat. 40, 2017-07-19, 21 h local time

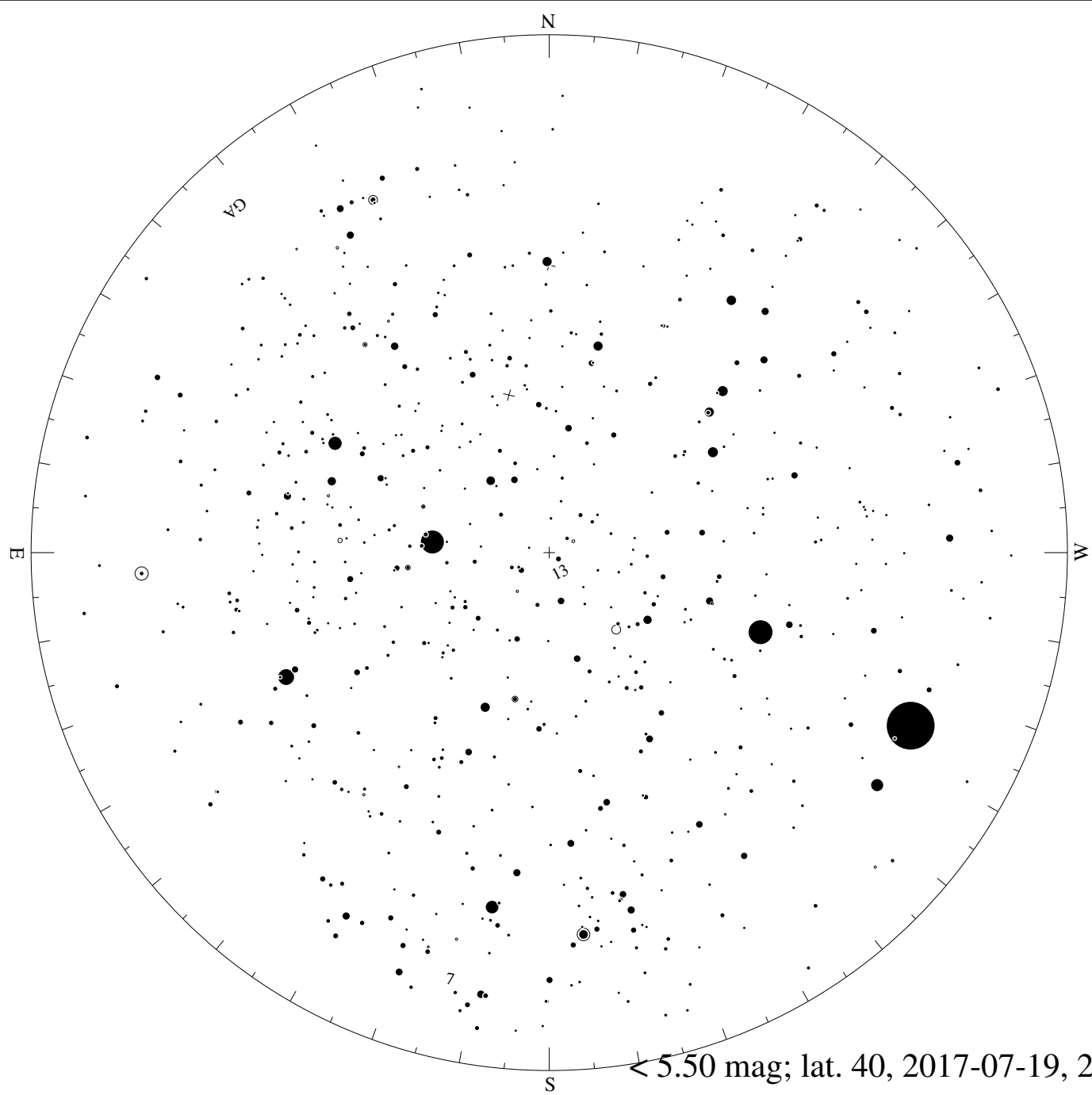


< 2.50 mag; lat. 40, 2017-07-19, 21 h local time



< 3.50 mag; lat. 40, 2017-07-19, 21 h local time





< 5.50 mag; lat. 40, 2017-07-19, 21 h local time