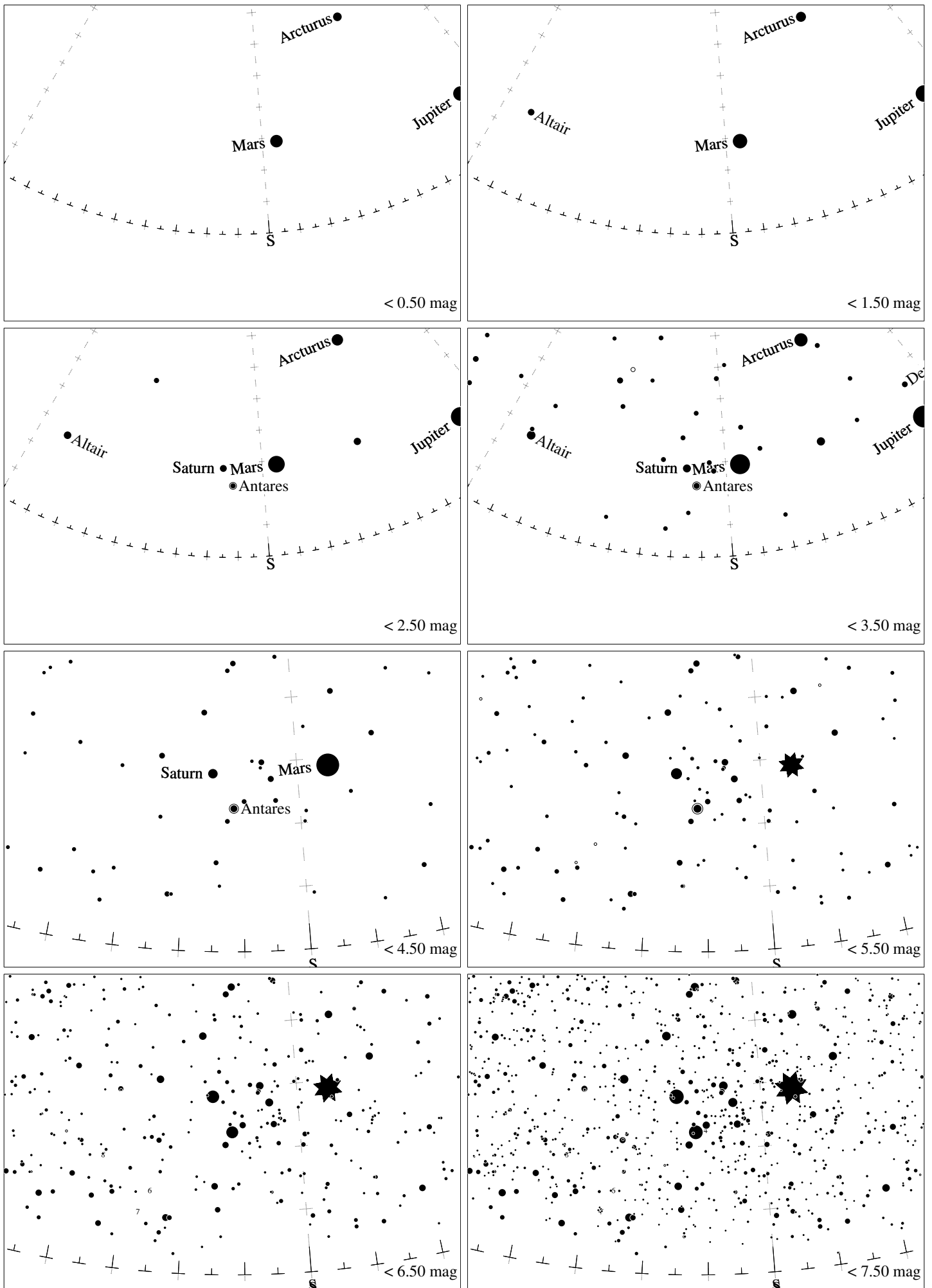
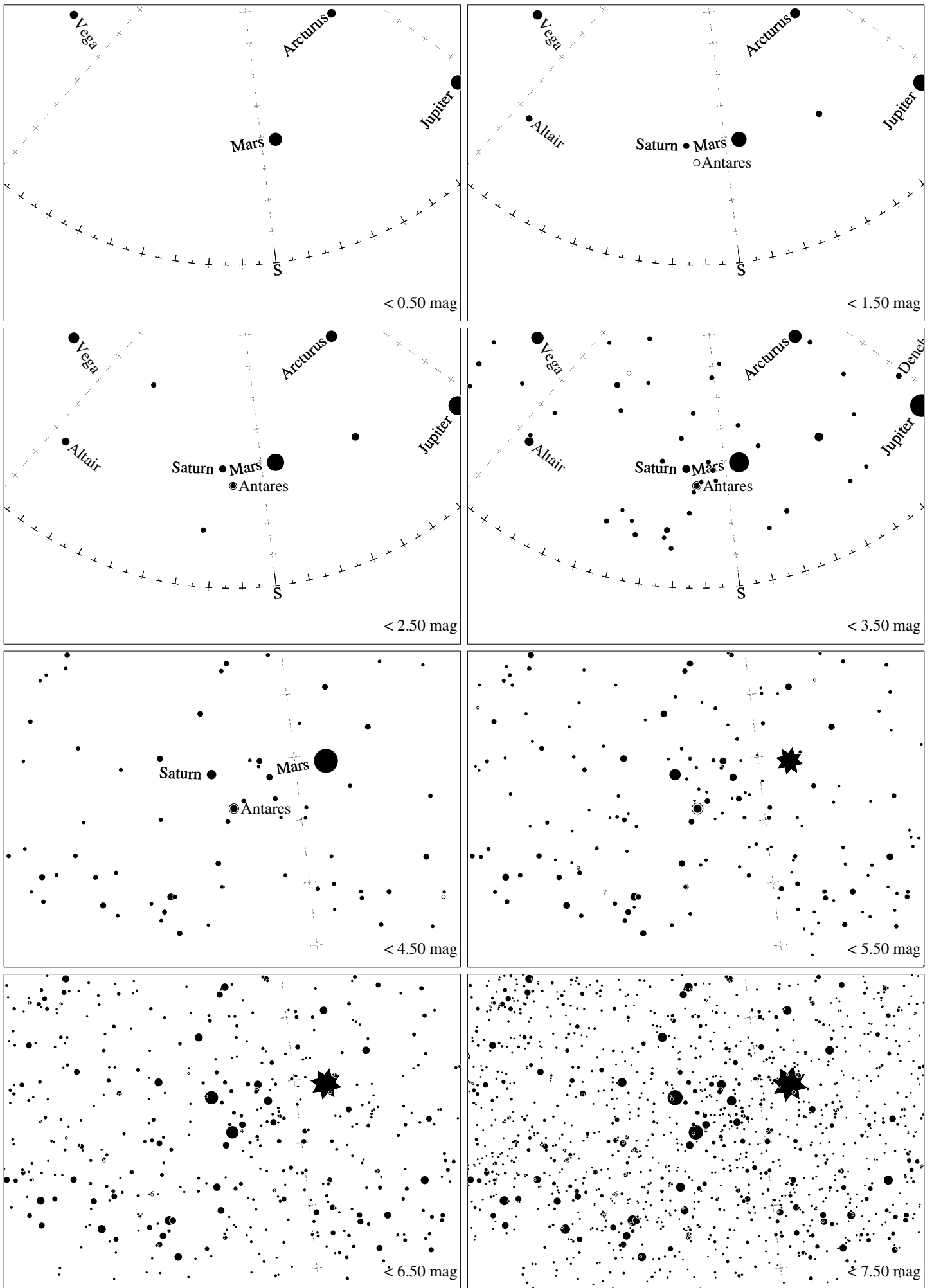


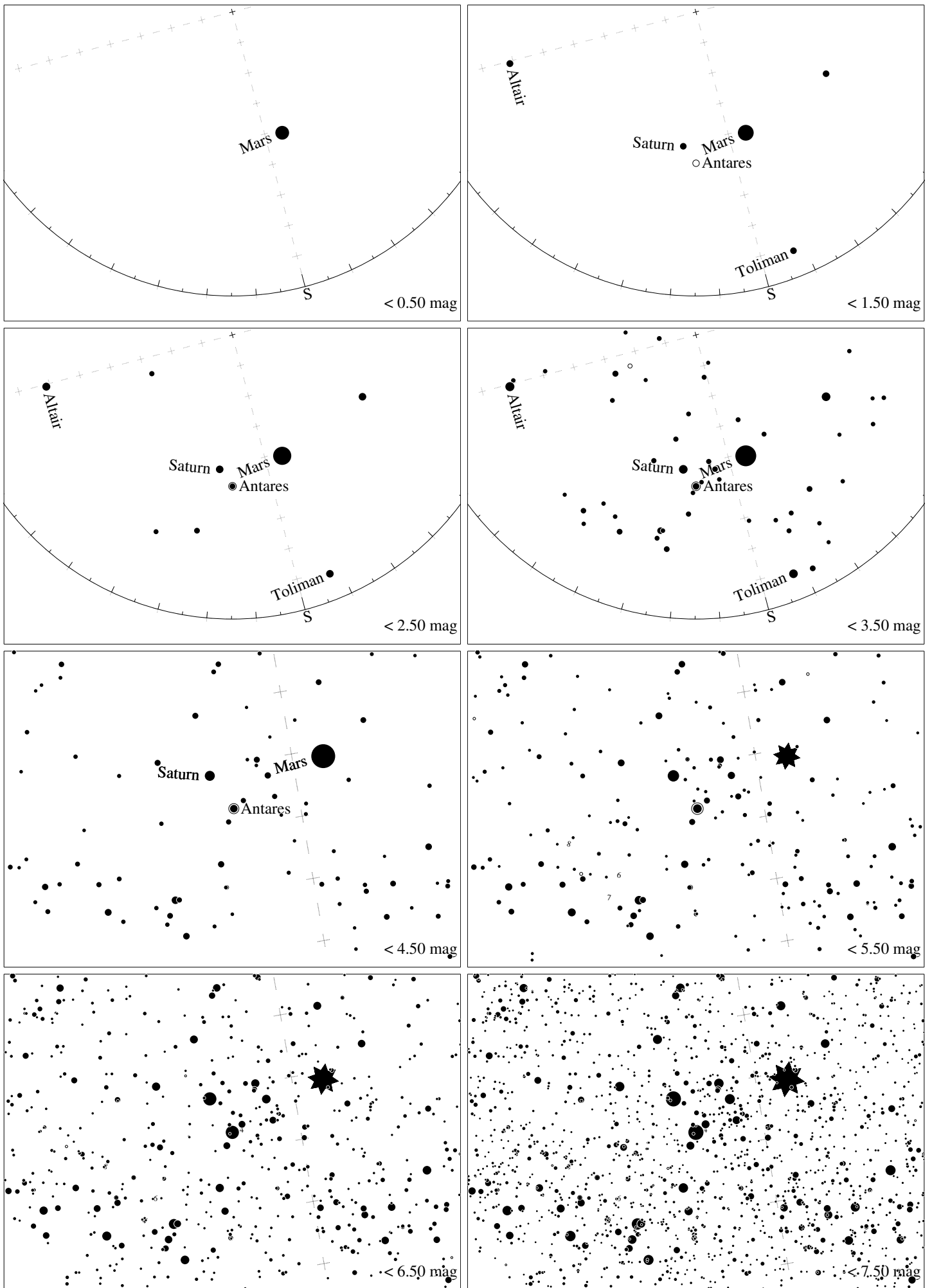
Maps for Globe at Night latitude  $50^\circ$ , 2016-07-01, 21 h local time (Sun at  $-6^\circ$ ), transparent air. Lines from N(E,S,W) to zenith shown (crosses each  $10^\circ$ ). Centered on Antares ( $\alpha$  Scorpii), which is  $11^\circ$  to the left from S, at  $13^\circ$  height. Detailed maps  $50^\circ$  vertically, the first four maps  $100^\circ$ . *Jan Hollan, CzechGlobe*



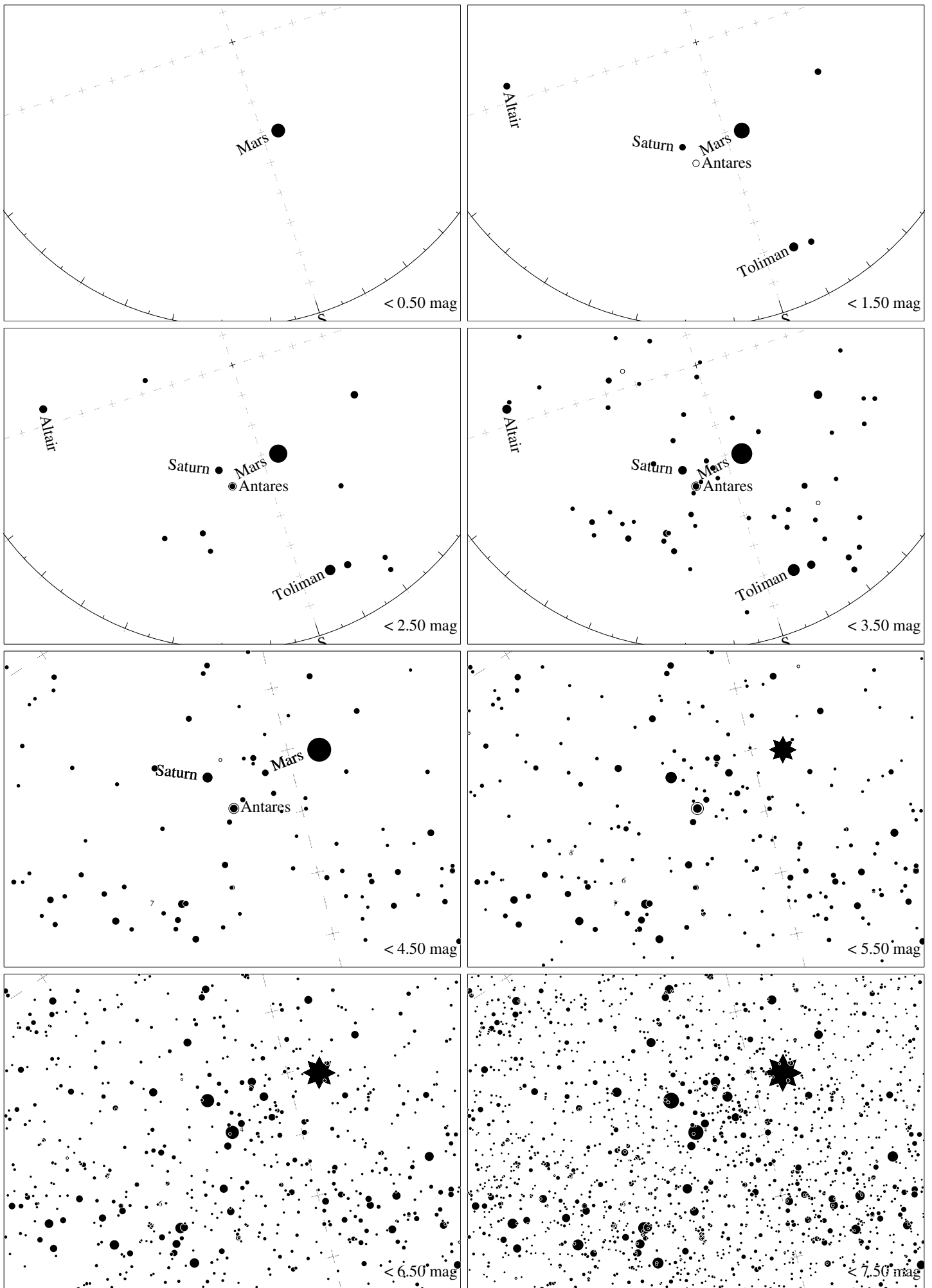
Maps for Globe at Night latitude  $40^\circ$ , 2016-07-01, 21 h local time (Sun at  $-14^\circ$ ), transparent air. Lines from N(E,S,W) to zenith shown (crosses each  $10^\circ$ ). Centered on Antares ( $\alpha$  Scorpii), which is  $12^\circ$  to the left from S, at  $23^\circ$  height. Detailed maps  $50^\circ$  vertically, the first four maps  $100^\circ$ . *Jan Hollan, CzechGlobe*



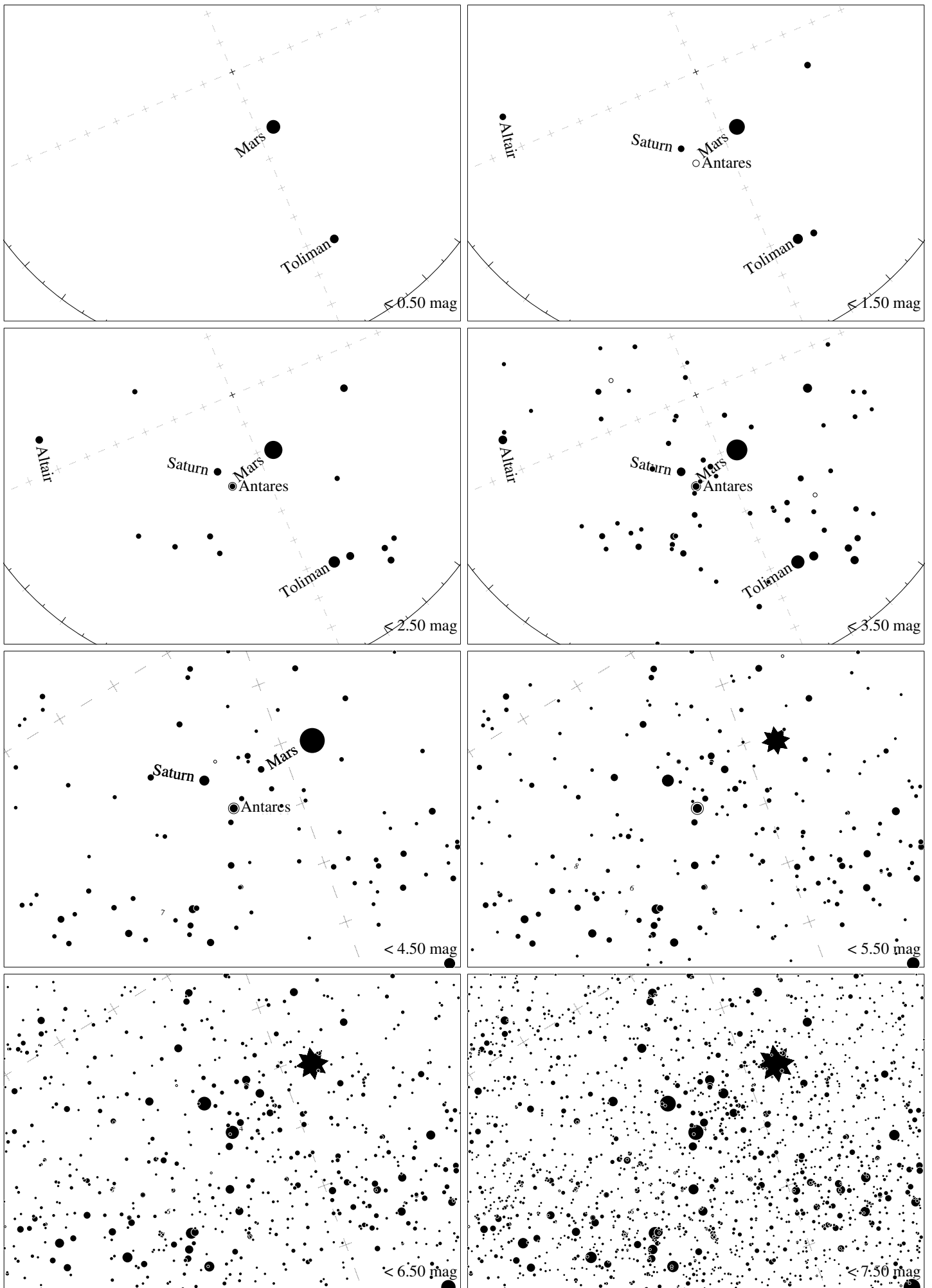
Maps for Globe at Night latitude  $30^\circ$ , 2016-07-01, 21 h local time (Sun at  $-21^\circ$ ), transparent air. Lines from N(E,S,W) to zenith shown (crosses each  $10^\circ$ ). Centered on Antares ( $\alpha$  Scorpii), which is  $13^\circ$  to the left from S, at  $32^\circ$  height. Detailed maps  $50^\circ$  vertically, the first four maps  $100^\circ$ . *Jan Hollan, CzechGlobe*



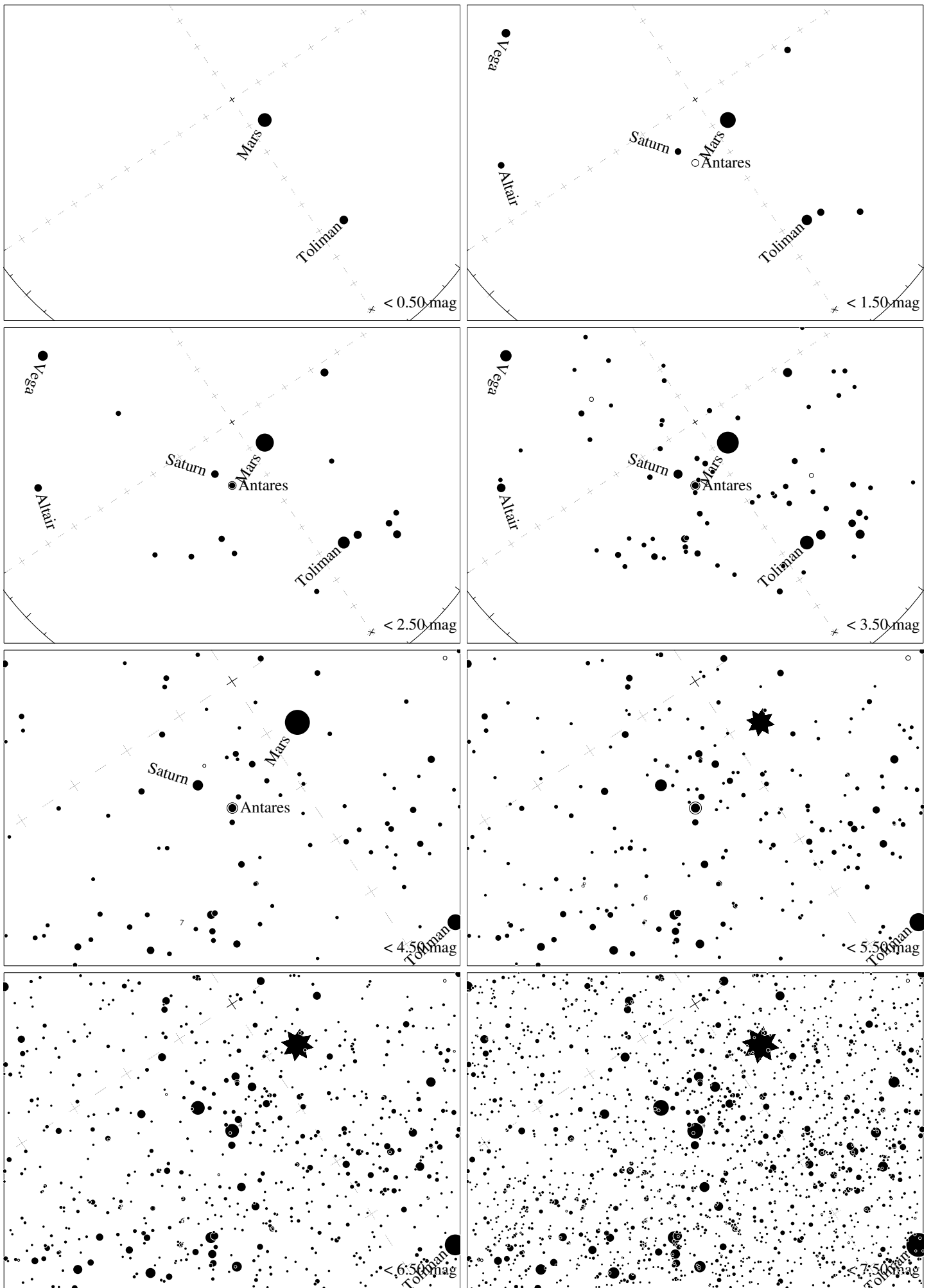
Maps for Globe at Night latitude  $20^\circ$ , 2016-07-01, 21 h local time (Sun at  $-28^\circ$ ), transparent air. Lines from N(E,S,W) to zenith shown (crosses each  $10^\circ$ ). Centered on Antares ( $\alpha$  Scorpii), which is  $15^\circ$  to the left from S, at  $42^\circ$  height. Detailed maps  $50^\circ$  vertically, the first four maps  $100^\circ$ . *Jan Hollan, CzechGlobe*



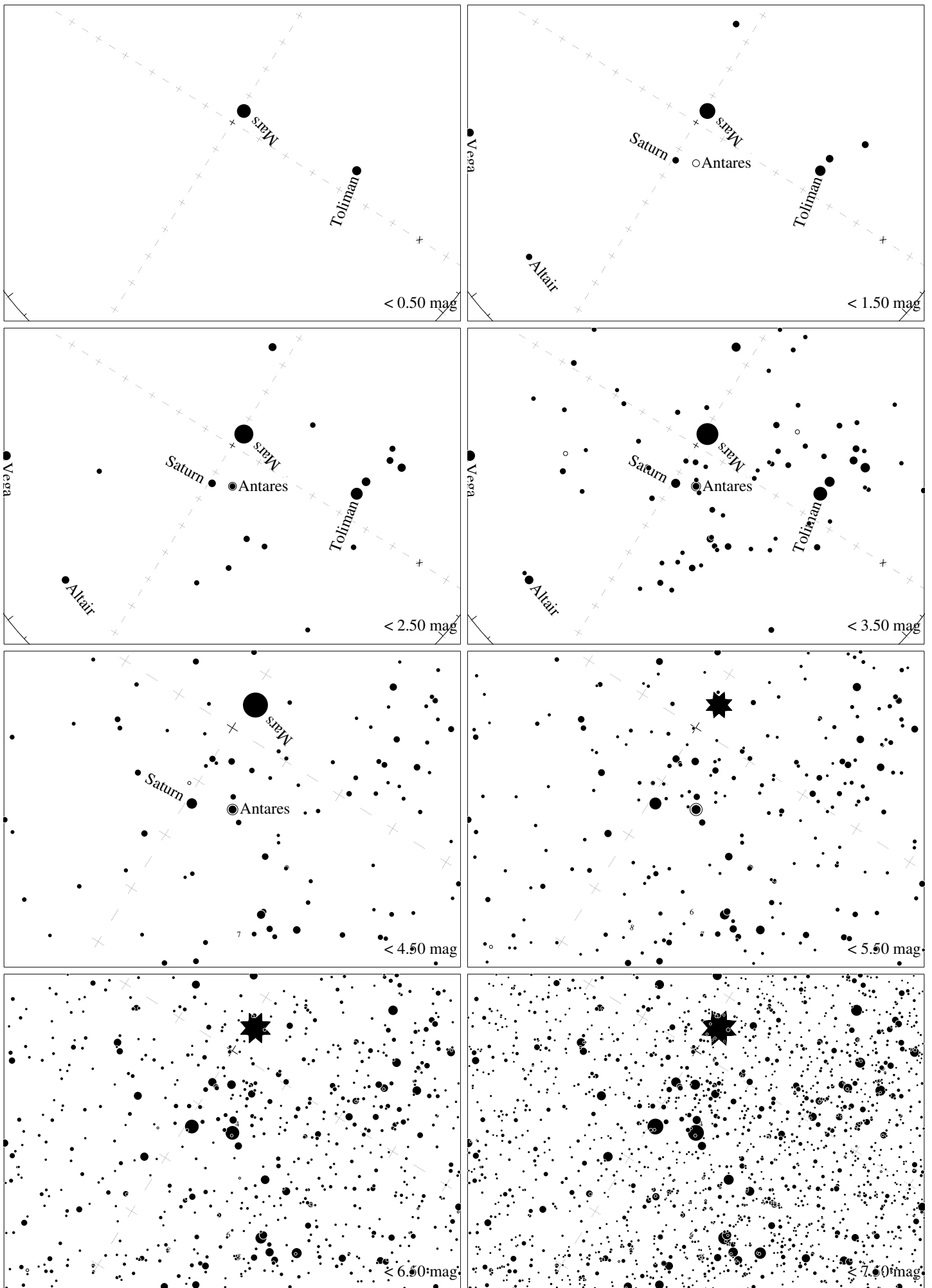
Maps for Globe at Night latitude 10°, 2016-07-01, 21 h local time (Sun at  $-34^\circ$ ), transparent air. Lines from N(E,S,W) to zenith shown (crosses each  $10^\circ$ ). Centered on Antares ( $\alpha$  Scorpii), which is  $18^\circ$  to the left from S, at  $52^\circ$  height. Detailed maps  $50^\circ$  vertically, the first four maps  $100^\circ$ . *Jan Hollan, CzechGlobe*



Maps for Globe at Night latitude  $0^\circ$ , 2016-07-01, 21 h local time (Sun at  $-40^\circ$ ), transparent air. Lines from N(E,S,W) to zenith shown (crosses each  $10^\circ$ ). Centered on Antares ( $\alpha$  Scorpii), which is  $23^\circ$  to the left from S, at  $61^\circ$  height. Detailed maps  $50^\circ$  vertically, the first four maps  $100^\circ$ . *Jan Hollan, CzechGlobe*

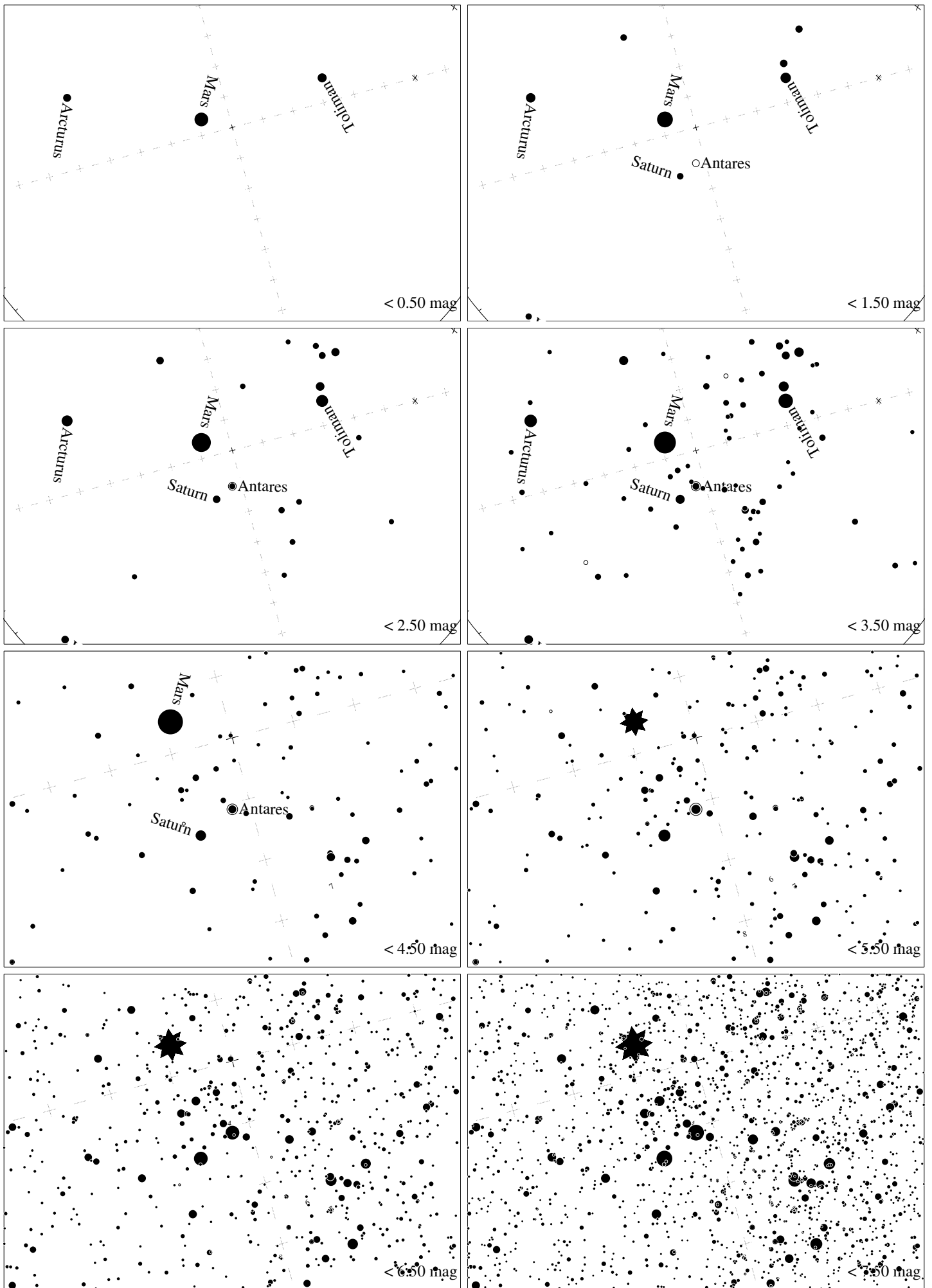


Maps for Globe at Night latitude  $-10^\circ$ , 2016-07-01, 21 h local time (Sun at  $-44^\circ$ ), transparent air. Lines from N(E,S,W) to zenith shown (crosses each  $10^\circ$ ). Centered on Antares ( $\alpha$  Scorpii), which is  $34^\circ$  to the left from S, at  $70^\circ$  height. Detailed maps  $50^\circ$  vertically, the first four maps  $100^\circ$ . *Jan Hollan, CzechGlobe*

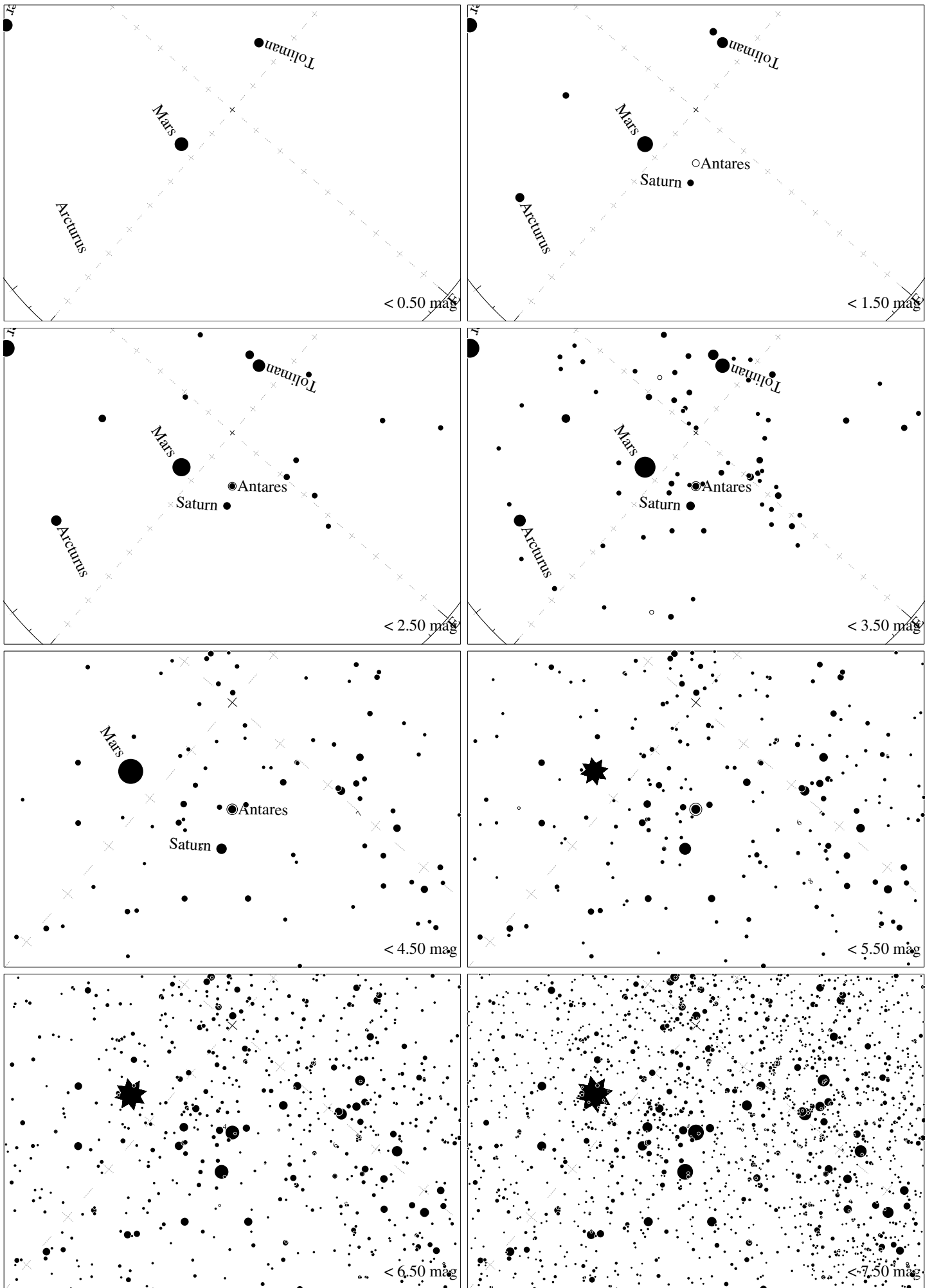


Maps for Globe at Night latitude  $-20^\circ$ , 2016-07-01, 21 h local time (Sun at  $-47^\circ$ ), transparent air. Lines from N(E,S,W) to zenith shown (crosses each  $10^\circ$ ). Centered on Antares ( $\alpha$  Scorpii), which is  $58^\circ$  to the left from S, at  $77^\circ$  height. Detailed maps  $50^\circ$  vertically, the first four maps  $100^\circ$ . *Jan Hollan, CzechGlobe*

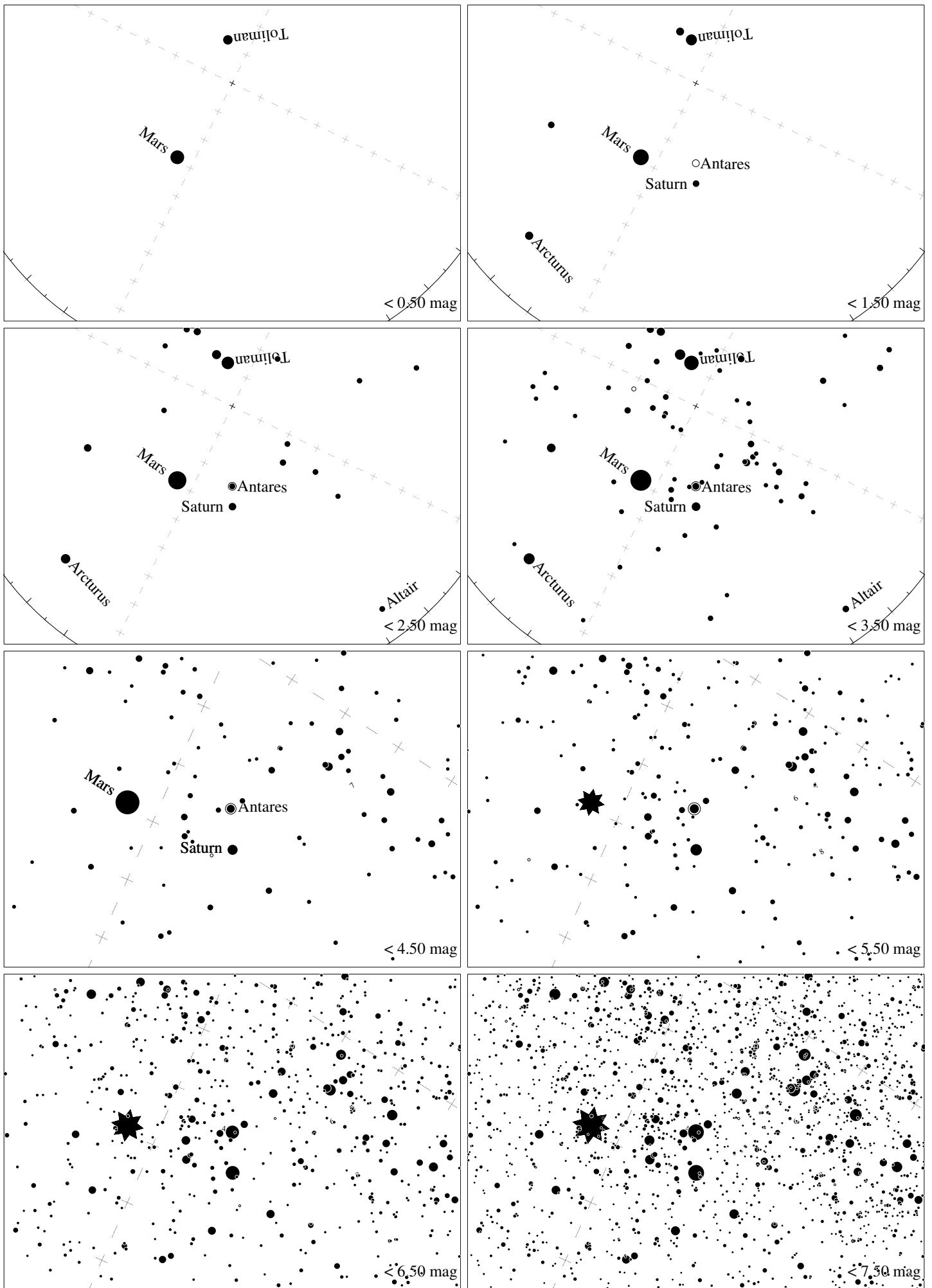




Maps for Globe at Night latitude  $-30^\circ$ , 2016-07-01, 21 h local time (Sun at  $-48^\circ$ ), transparent air. Lines from N(E,S,W) to zenith shown (crosses each  $10^\circ$ ). Centered on Antares ( $\alpha$  Scorpii), which is  $75^\circ$  to the right from N, at  $79^\circ$  height. Detailed maps  $50^\circ$  vertically, the first four maps  $100^\circ$ . *Jan Hollan, CzechGlobe*



Maps for Globe at Night latitude  $-40^\circ$ , 2016-07-01, 21 h local time (Sun at  $-48^\circ$ ), transparent air. Lines from N(E,S,W) to zenith shown (crosses each  $10^\circ$ ). Centered on Antares ( $\alpha$  Scorpii), which is  $41^\circ$  to the right from N, at  $73^\circ$  height. Detailed maps  $50^\circ$  vertically, the first four maps  $100^\circ$ . *Jan Hollan, CzechGlobe*



Maps for Globe at Night latitude  $-50^\circ$ , 2016-07-01, 21 h local time (Sun at  $-45^\circ$ ), transparent air. Lines from N(E,S,W) to zenith shown (crosses each  $10^\circ$ ). Centered on Antares ( $\alpha$  Scorpii), which is  $26^\circ$  to the right from N, at  $65^\circ$  height. Detailed maps  $50^\circ$  vertically, the first four maps  $100^\circ$ . *Jan Hollan, CzechGlobe*