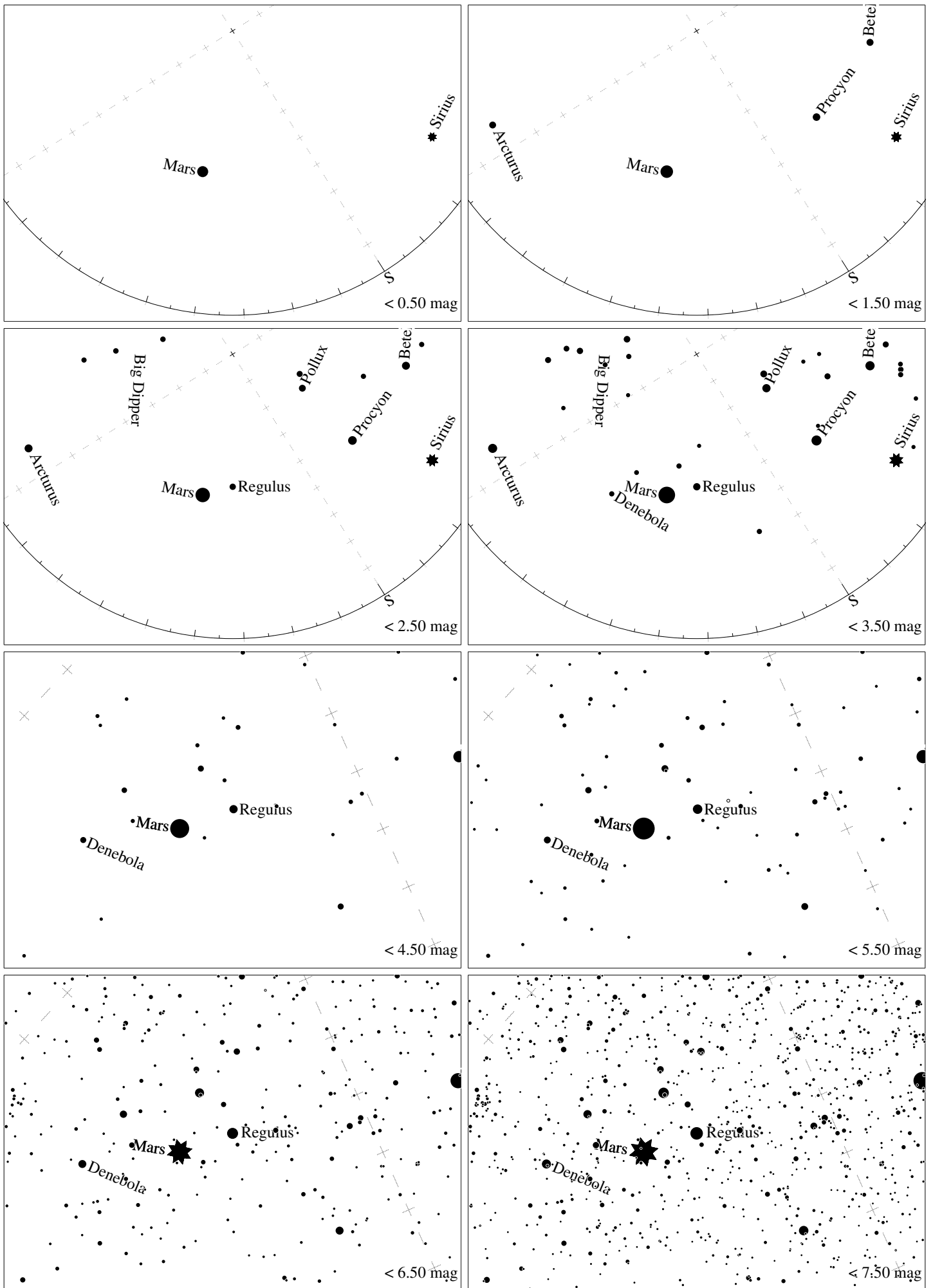
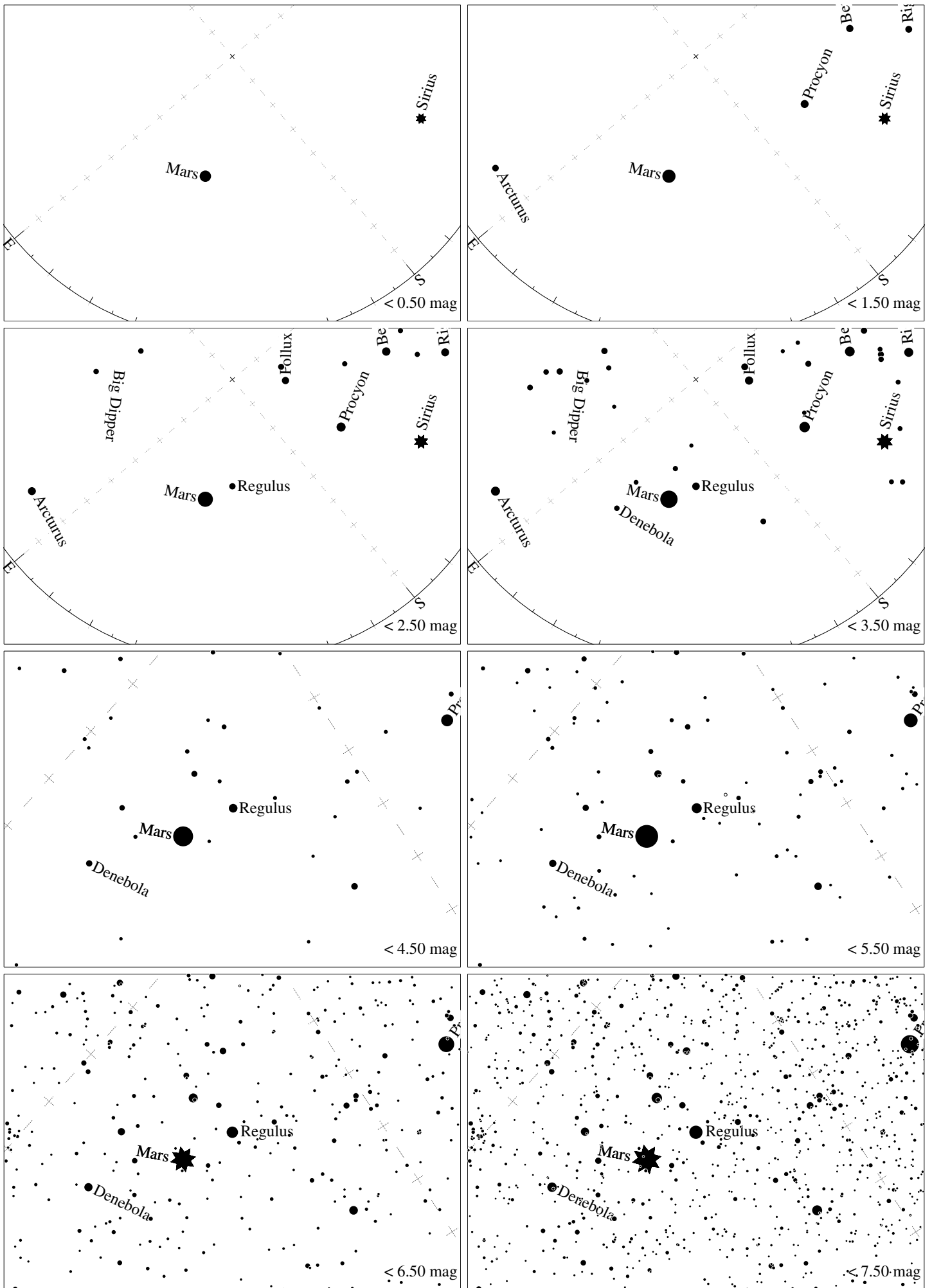


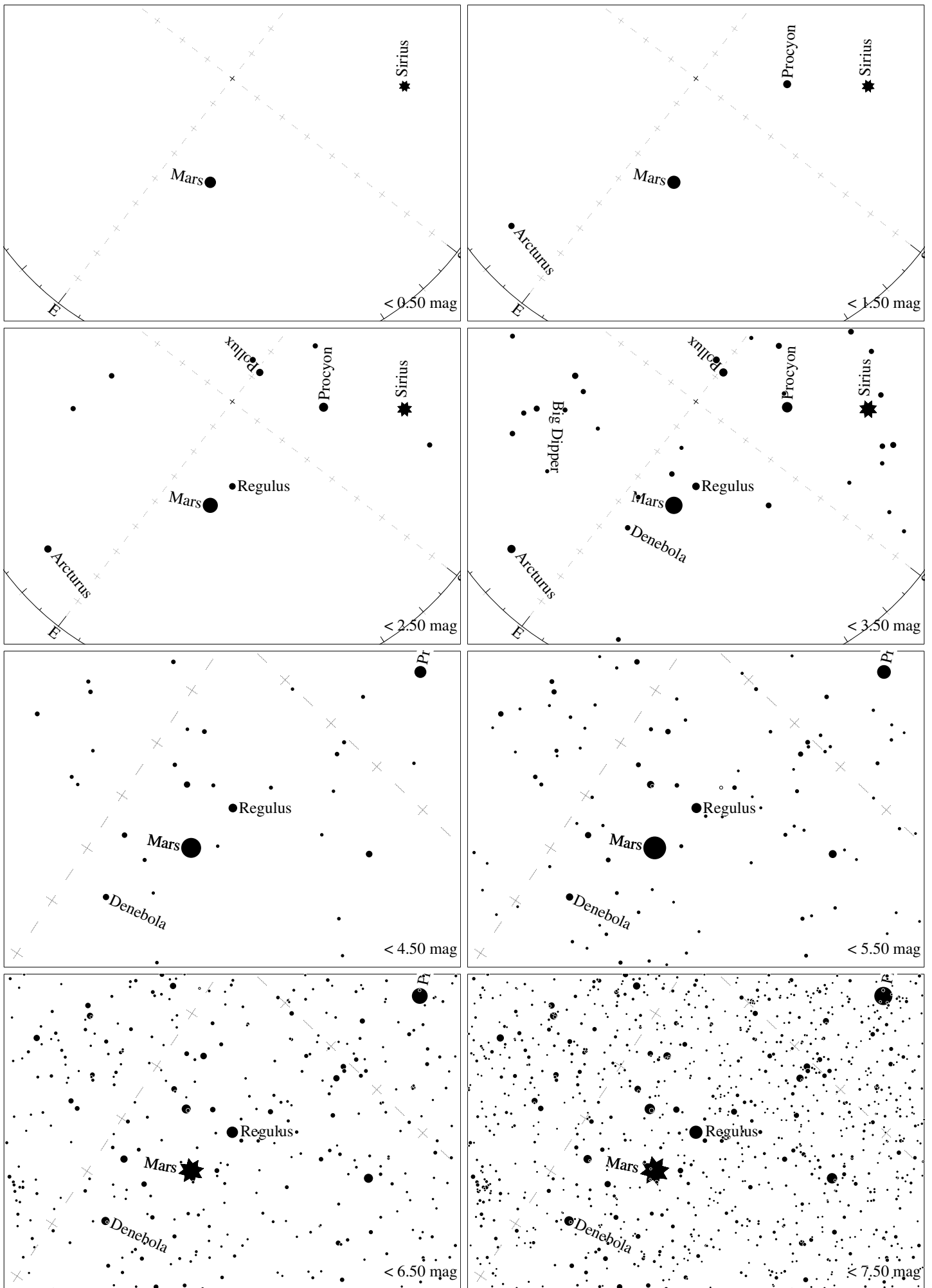
Maps for Globe at Night latitude 60° , March 17, 21 h local time (Sun at -21°), turbid air. Lines from N(E,S,W) to zenith shown (crosses each 10°). Regulus (α Leonis) is 28° to the left from S, at 39° height.
Detailed maps 50° vertically, the first four maps 100° . *Jan Hollan, CzechGlobe*



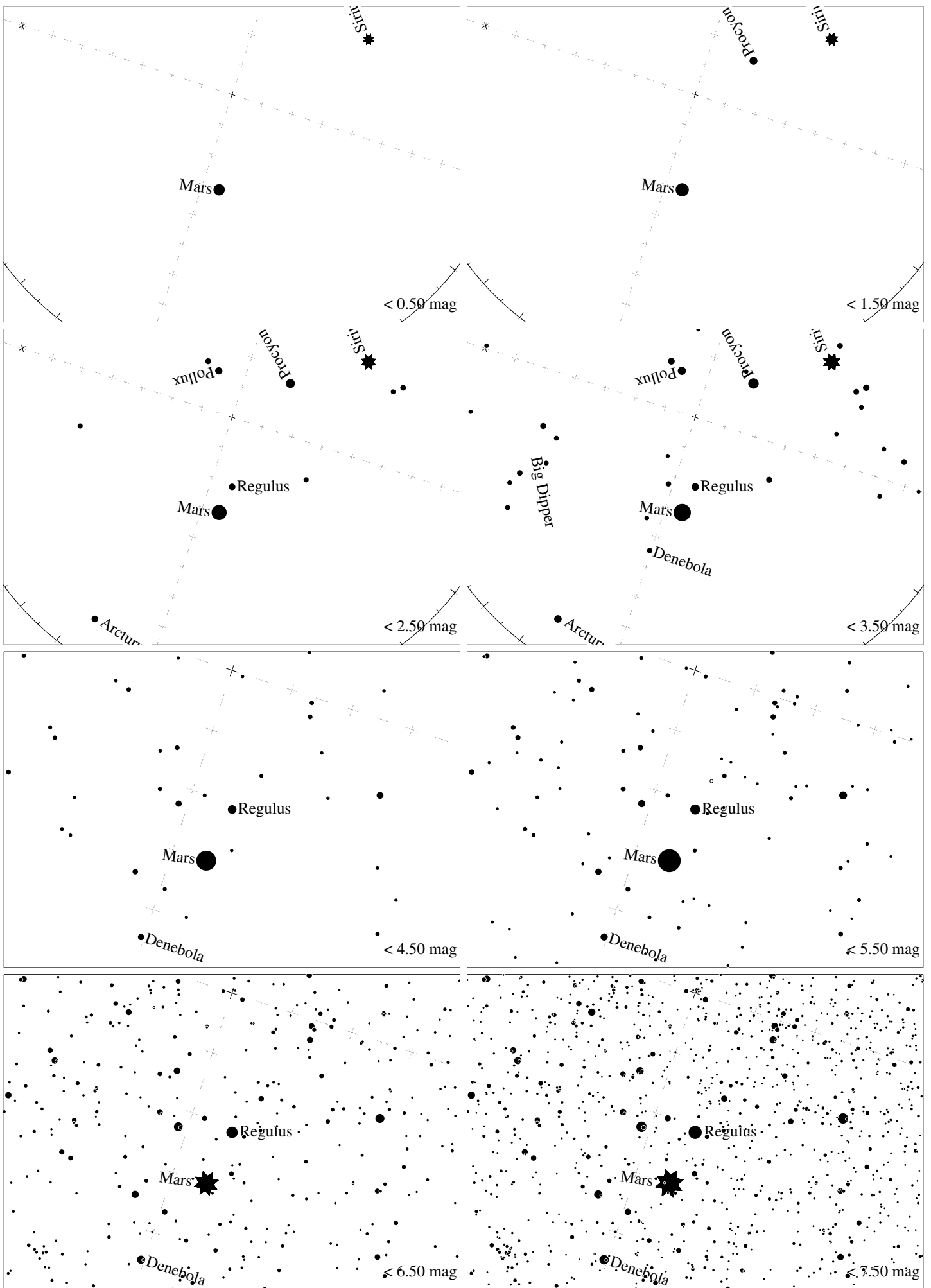
Maps for Globe at Night latitude 50° , March 17, 21 h local time (Sun at -27°), turbid air. Lines from N(E,S,W) to zenith shown (crosses each 10°). Regulus (α Leonis) is 32° to the left from S, at 48° height.
 Detailed maps 50° vertically, the first four maps 100° . *Jan Hollan, CzechGlobe*



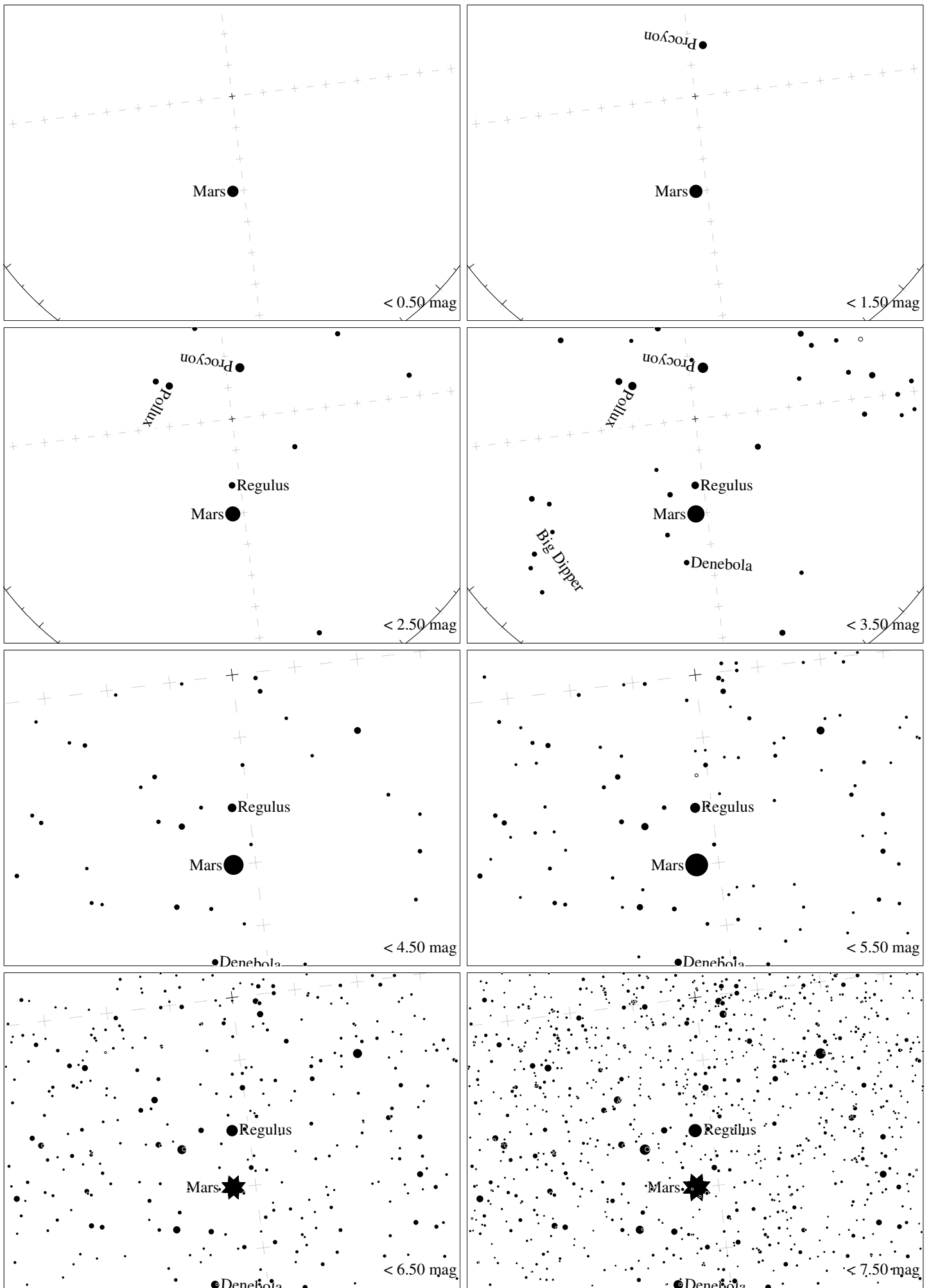
Maps for Globe at Night latitude 40° , March 17, 21 h local time (Sun at -32°), turbid air. Lines from N(E,S,W) to zenith shown (crosses each 10°). Regulus (α Leonis) is 40° to the left from S, at 56° height.
 Detailed maps 50° vertically, the first four maps 100° . *Jan Hollan, CzechGlobe*



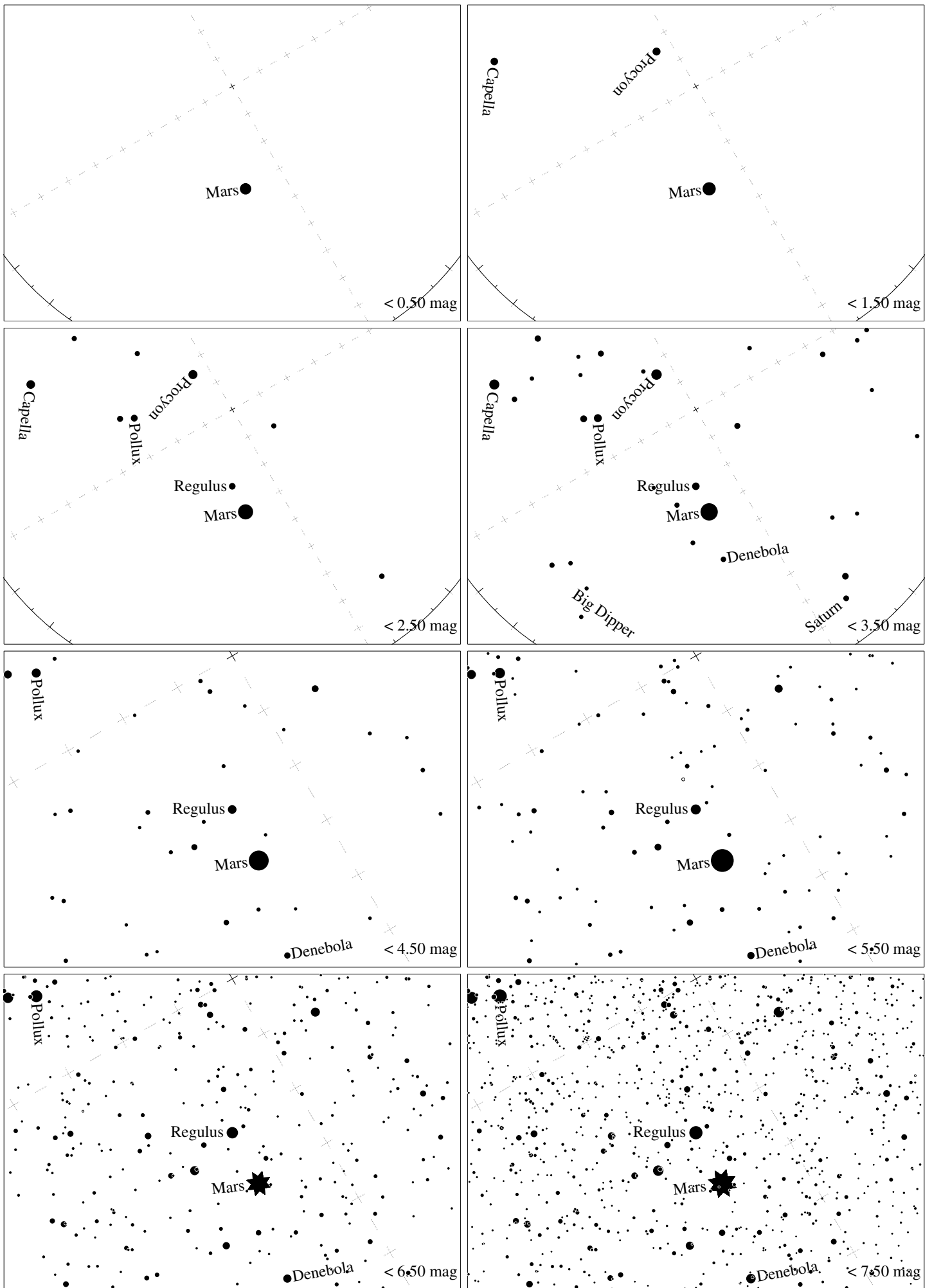
Maps for Globe at Night latitude 30° , March 17, 21 h local time (Sun at -37°), turbid air. Lines from N(E,S,W) to zenith shown (crosses each 10°). Regulus (α Leonis) is 52° to the left from S, at 63° height. Detailed maps 50° vertically, the first four maps 100° . *Jan Hollan, CzechGlobe*



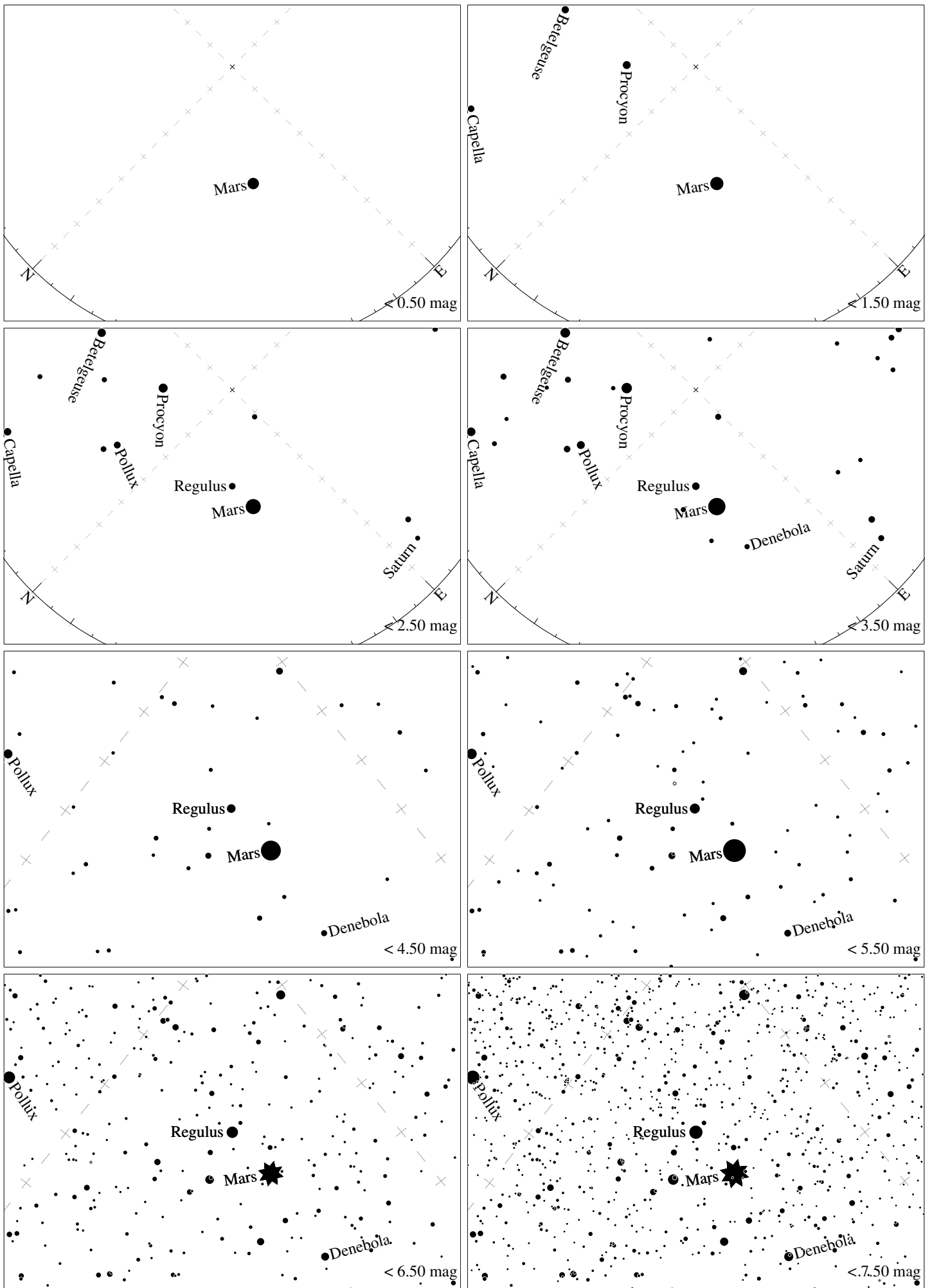
Maps for Globe at Night latitude 20° , March 17, 21 h local time (Sun at -40°), turbid air. Lines from N(E,S,W) to zenith shown (crosses each 10°). Regulus (α Leonis) is 72° to the left from S, at 68° height. Detailed maps 50° vertically, the first four maps 100° . *Jan Hollan, CzechGlobe*



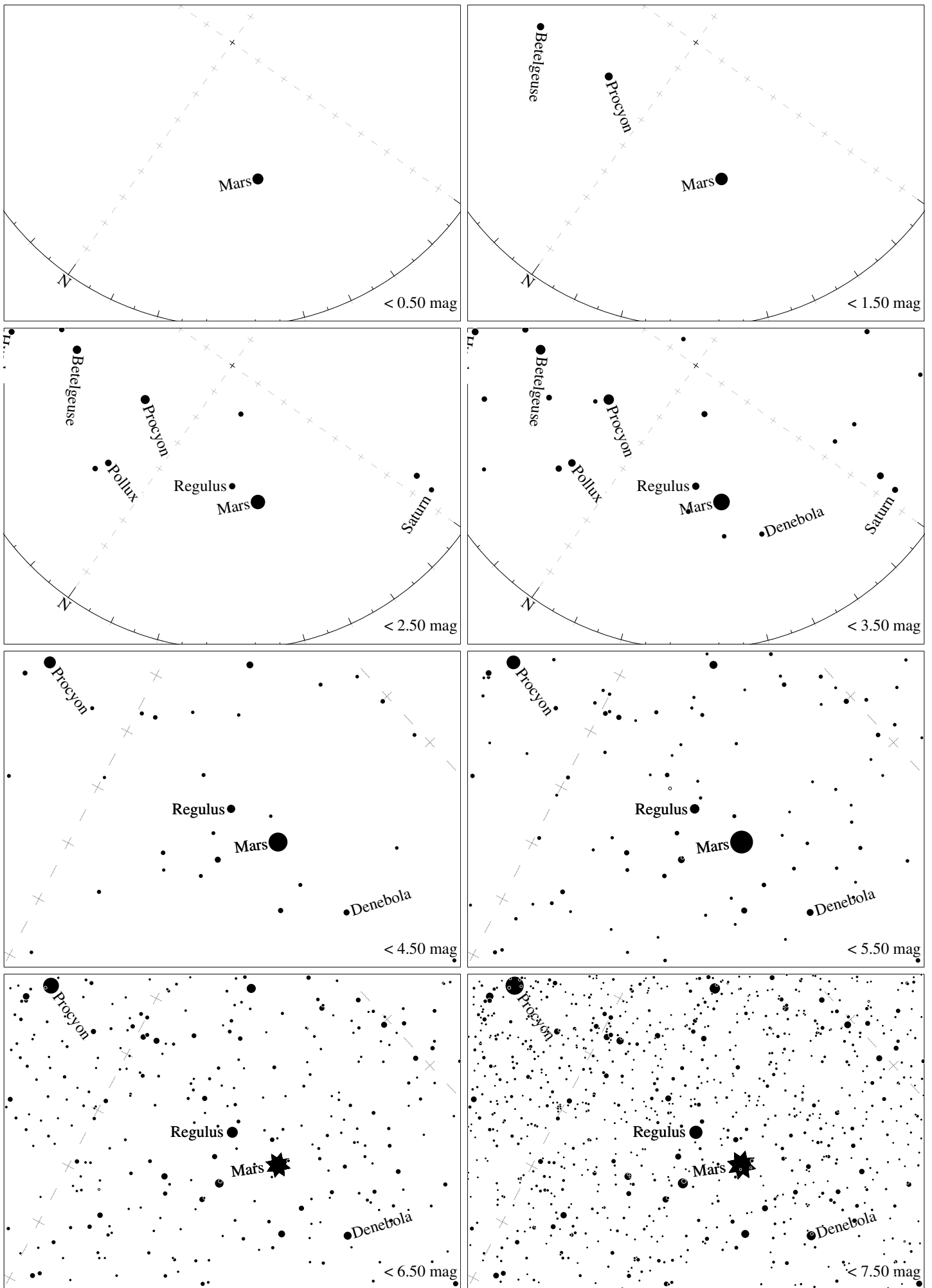
Maps for Globe at Night latitude 10° , March 17, 21 h local time (Sun at -42°), turbid air. Lines from N(E,S,W) to zenith shown (crosses each 10°). Regulus (α Leonis) is 83° to the right from N, at 69° height. Detailed maps 50° vertically, the first four maps 100° . *Jan Hollan, CzechGlobe*



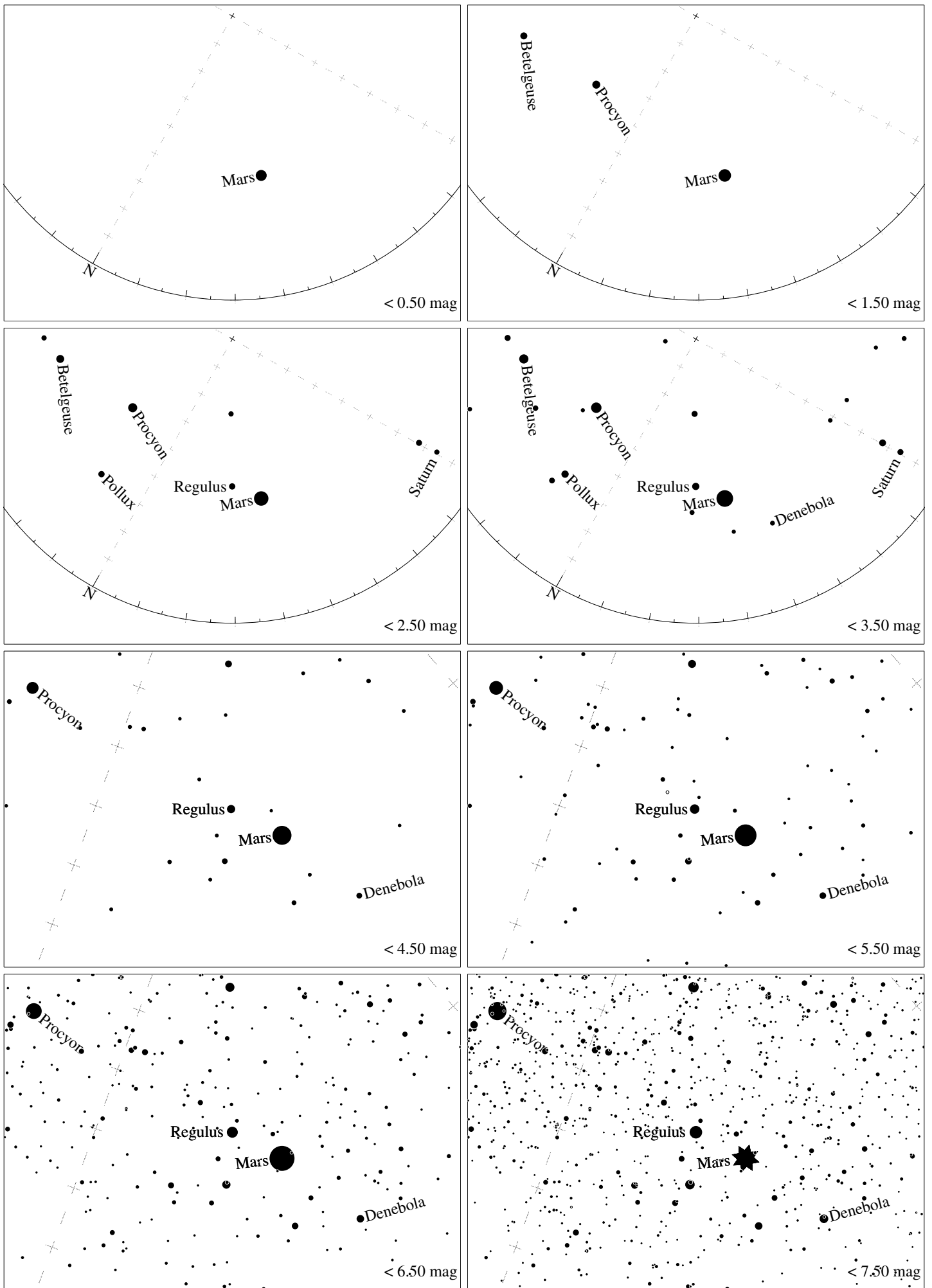
Maps for Globe at Night latitude 0° , March 17, 21 h local time (Sun at -43°), turbid air. Lines from N(E,S,W) to zenith shown (crosses each 10°). Regulus (α Leonis) is 60° to the right from N, at 66° height. Detailed maps 50° vertically, the first four maps 100° . *Jan Hollan, CzechGlobe*



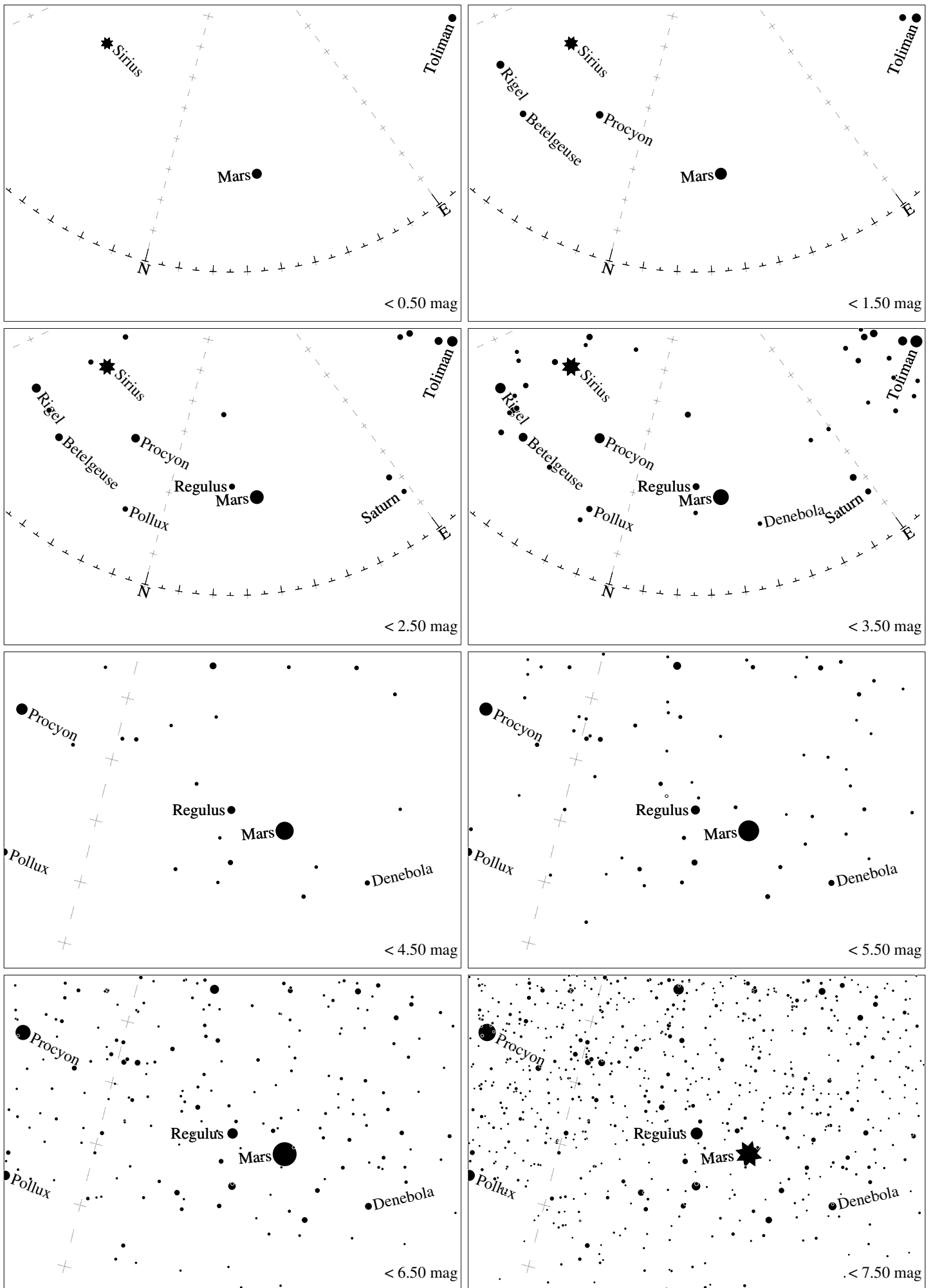
Maps for Globe at Night latitude -10° , March 17, 21 h local time (Sun at -42°), turbid air. Lines from N(E,S,W) to zenith shown (crosses each 10°). Regulus (α Leonis) is 45° to the right from N, at 59° height. Detailed maps 50° vertically, the first four maps 100° . *Jan Hollan, CzechGlobe*



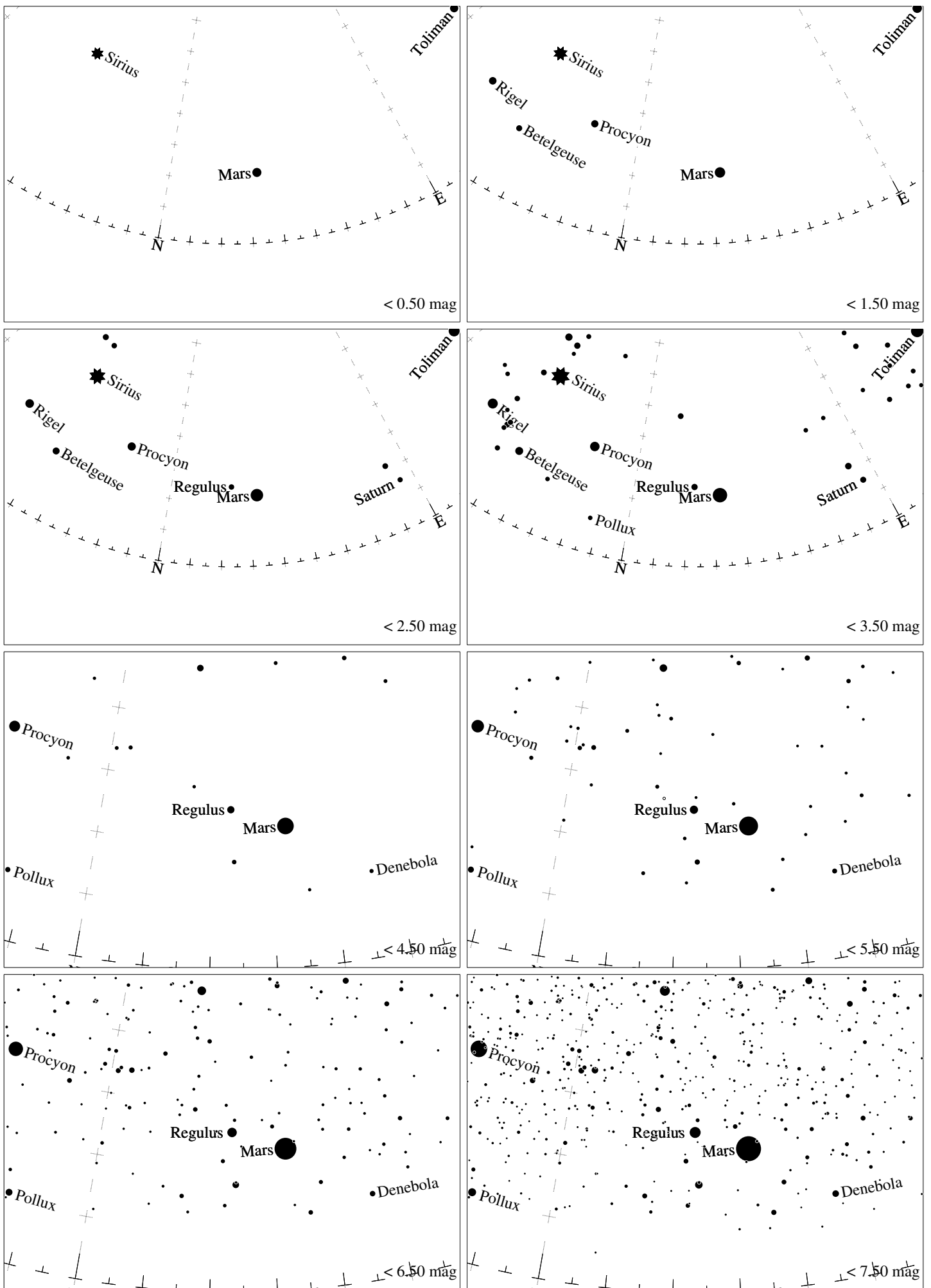
Maps for Globe at Night latitude -20° , March 17, 21 h local time (Sun at -39°), turbid air. Lines from N(E,S,W) to zenith shown (crosses each 10°). Regulus (α Leonis) is 35° to the right from N, at 52° height. Detailed maps 50° vertically, the first four maps 100° . *Jan Hollan, CzechGlobe*



Maps for Globe at Night latitude -30° , March 17, 21 h local time (Sun at -36°), turbid air. Lines from N(E,S,W) to zenith shown (crosses each 10°). Regulus (α Leonis) is 29° to the right from N, at 43° height. Detailed maps 50° vertically, the first four maps 100° . *Jan Hollan, CzechGlobe*



Maps for Globe at Night latitude -40° , March 17, 21 h local time (Sun at -31°), turbid air. Lines from N(E,S,W) to zenith shown (crosses each 10°). Regulus (α Leonis) is 26° to the right from N, at 34° height. Detailed maps 50° vertically, the first four maps 100° . *Jan Hollan, CzechGlobe*



Maps for Globe at Night latitude -50° , March 17, 21 h local time (Sun at -25°), turbid air. Lines from N(E,S,W) to zenith shown (crosses each 10°). Regulus (α Leonis) is 23° to the right from N, at 25° height. Detailed maps 50° vertically, the first four maps 100° . *Jan Hollan, CzechGlobe*