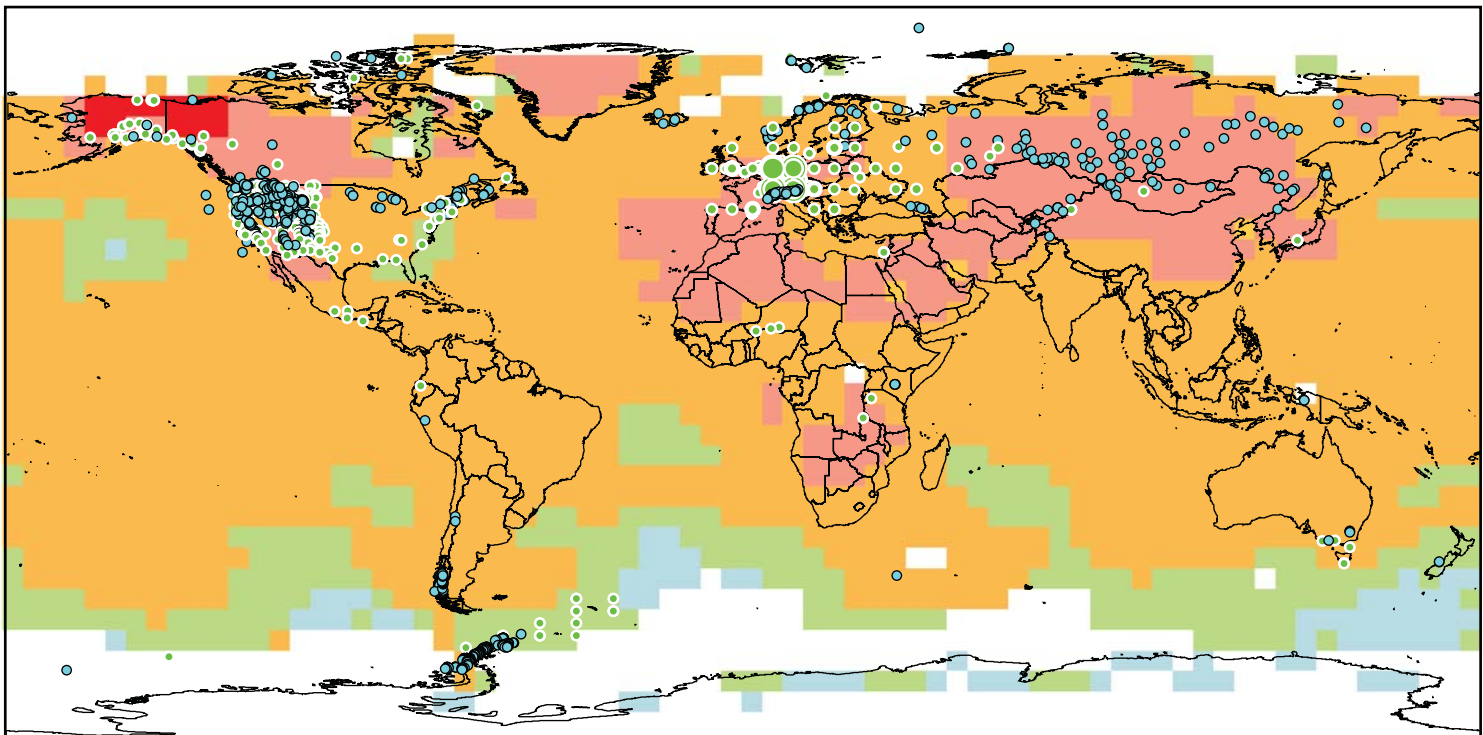


# Changes in physical and biological systems and surface temperature 1970-2004

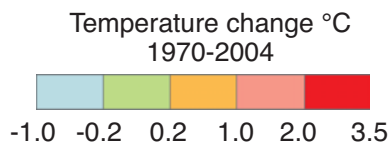


NAM	LA	EUR <sup>28,115</sup>	AFR	AS	ANZ	PR*	TER <sup>28,586</sup>	MFW**	GLO <sup>28,671</sup>
355 455	53 5	119	5 2	106 8	6 0	120 24	764	1 85	765
94% 92%	98% 100%	94% 89%	100% 100%	96% 100%	100% -	91% 100%	94% 90%	100% 99%	94% 90%

## Observed data series

- Physical systems (snow, ice and frozen ground; hydrology; coastal processes)
- Biological systems (terrestrial, marine, and freshwater)

Europe ***	
○	1-30
○	31-100
○	101-800
○	801-1200
○	1201-7500



## Physical

## Biological

Number of significant observed changes	Number of significant observed changes
Percentage of significant changes consistent with warming	Percentage of significant changes consistent with warming

\* Polar regions include also observed changes in marine and freshwater biological systems.

\*\* Marine and freshwater includes observed changes at sites and large areas in oceans, small islands and continents. Locations of large-area marine changes are not shown on the map.

\*\*\* Circles in Europe represent 1 to 7,500 data series.