

comments:

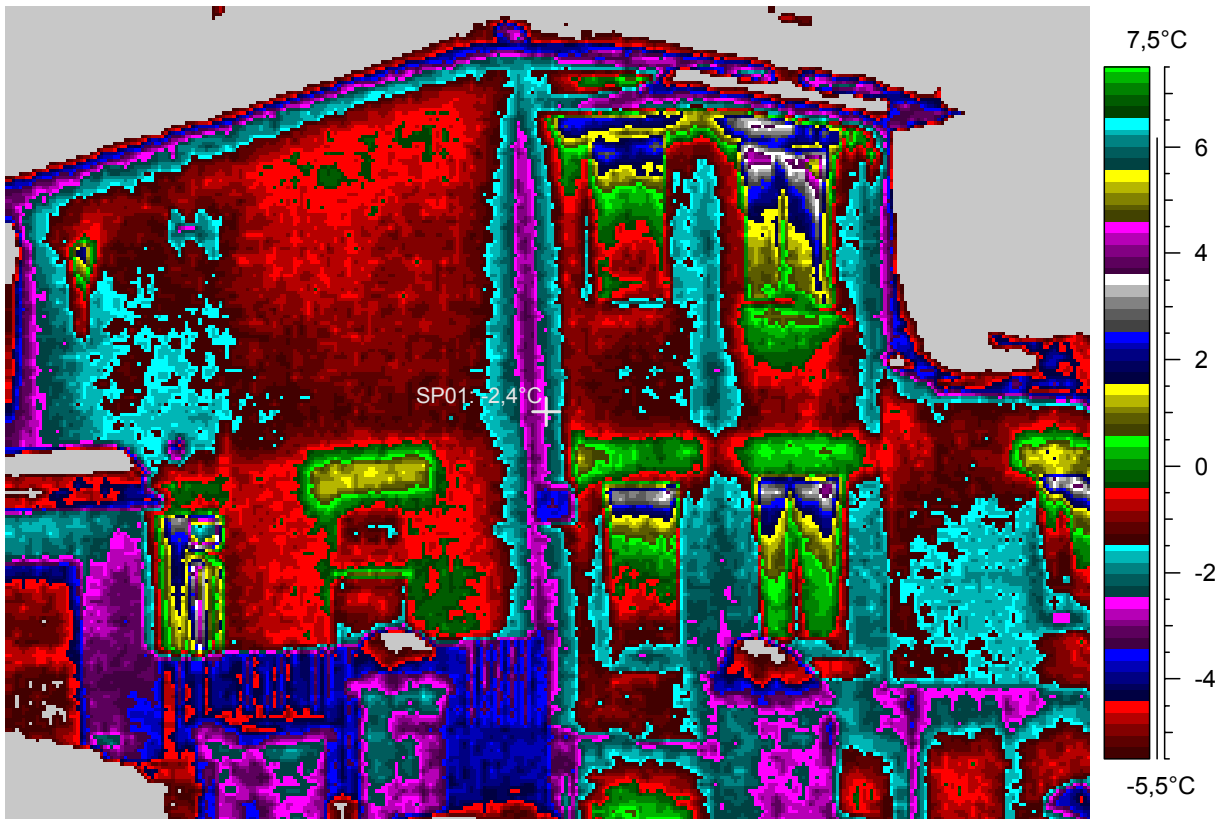
blabla

1 - Ir_2103.jpg

Label	Value
IR : max	6,7°C
IR : min	-13,5°C
SP01	-2,4°C

20.2.2005

19:09:00



comments:

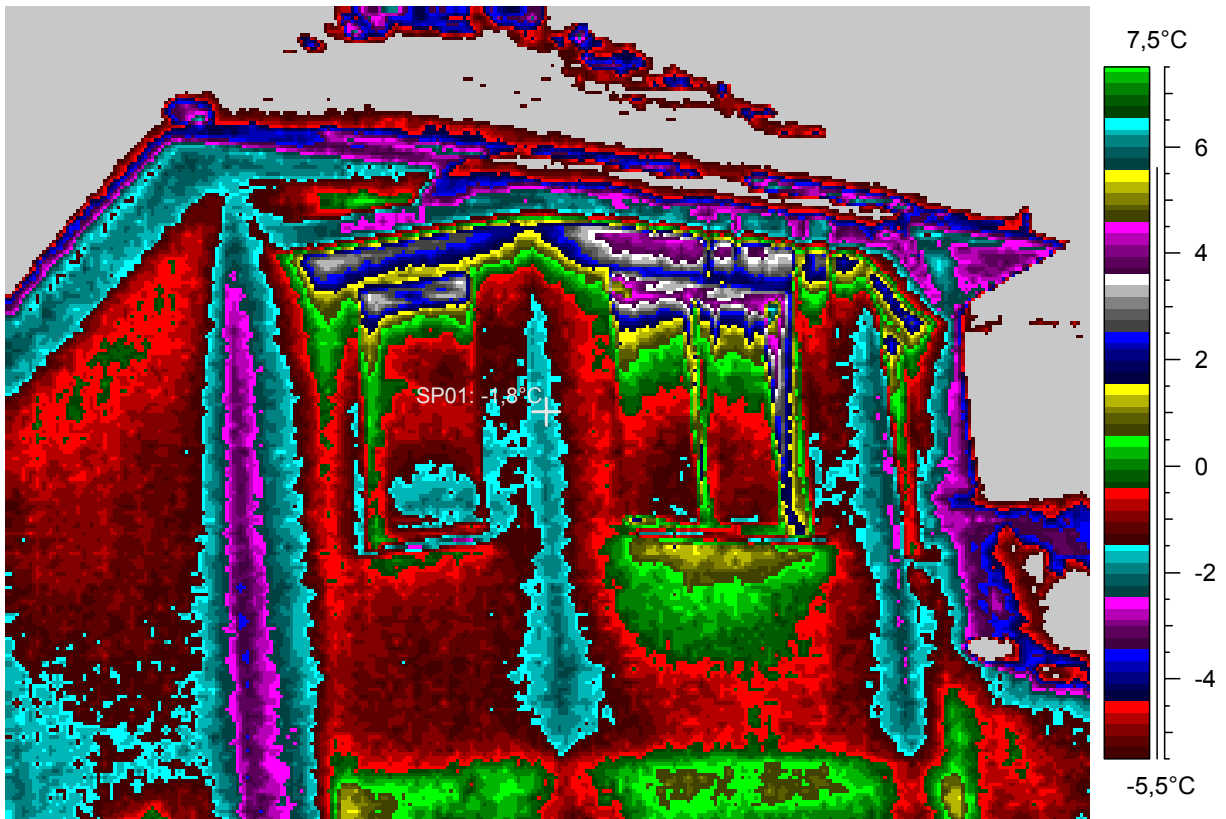
blabla

2 - Ir_2104.jpg

Label	Value
IR : max	6,7°C
IR : min	<-30,0°C
SP01	-1,8°C

20.2.2005

19:10:03



comments:

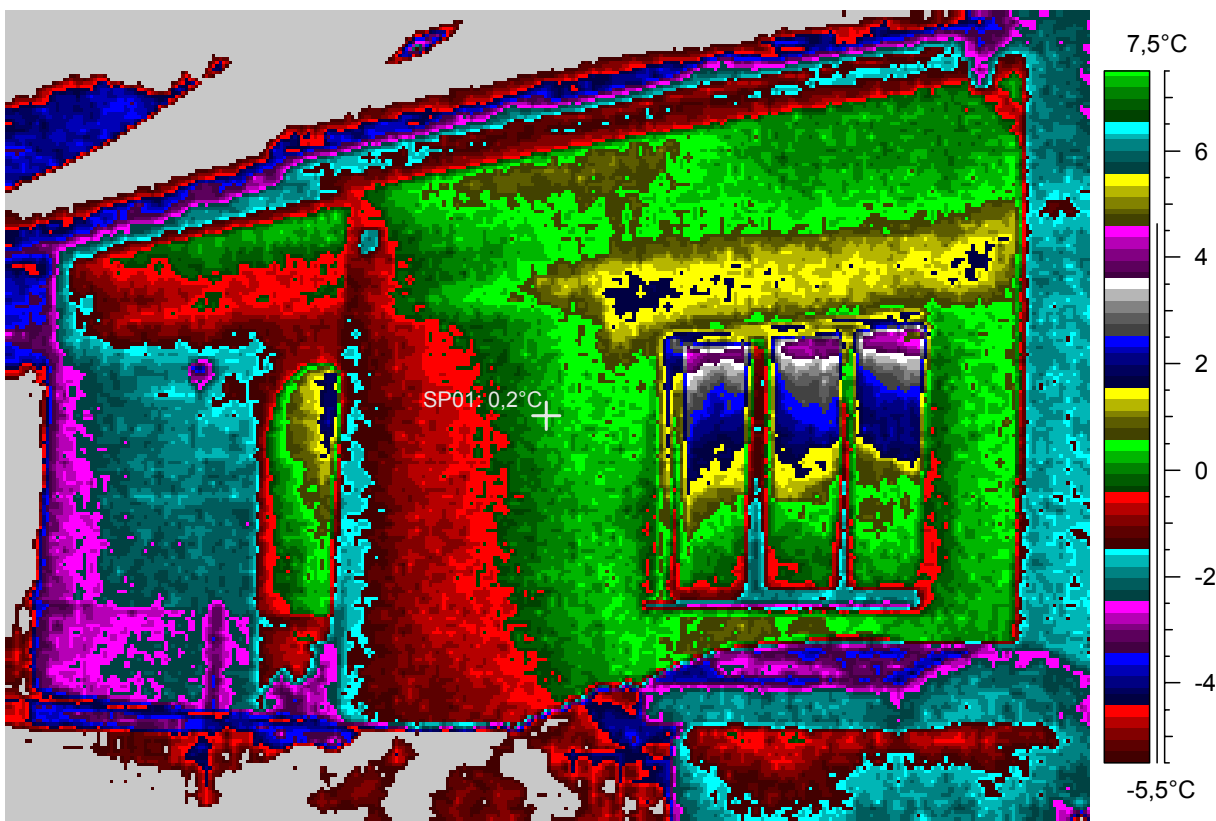
blabla

3 - Ir_2105.jpg

Label	Value
IR : max	5,1°C
IR : min	*-25,0°C
SP01	0,2°C

20.2.2005

19:10:43



comments:

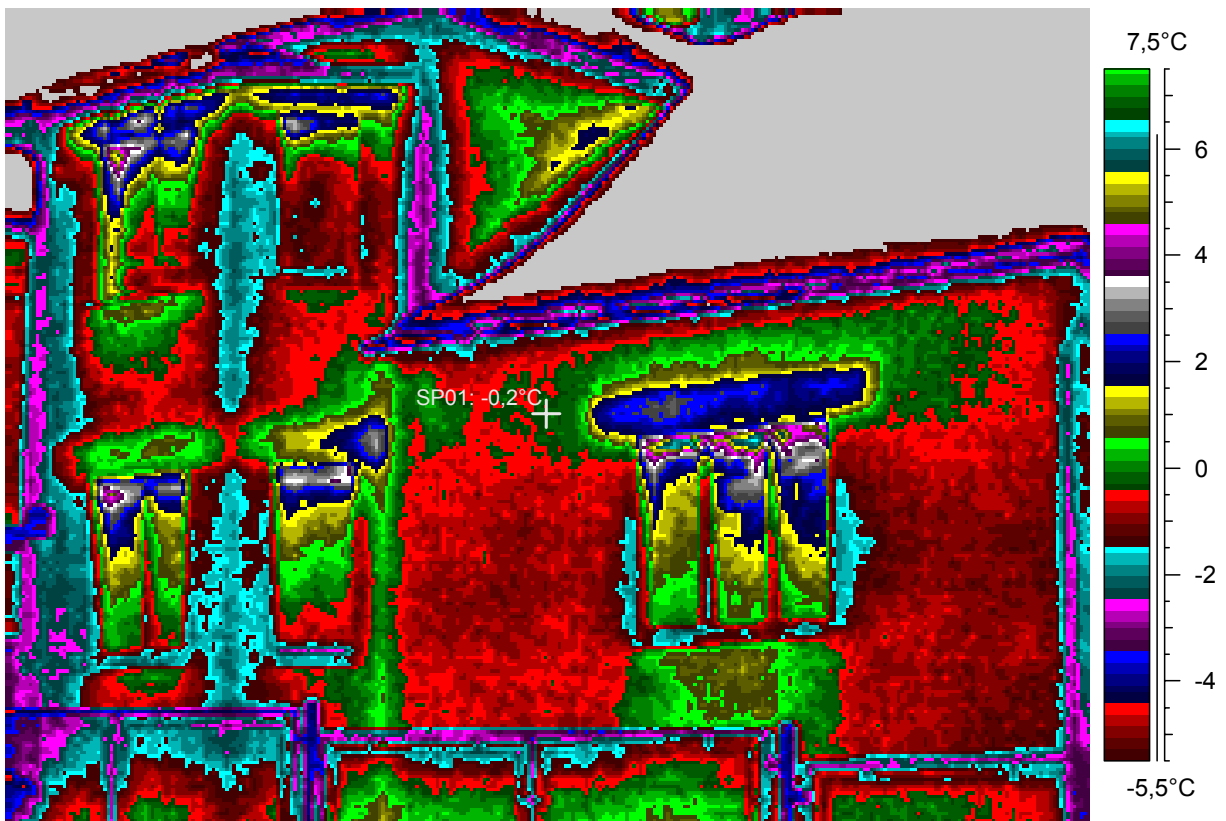
blabla

4 - Ir_2106.jpg

Label	Value
IR : max	7,4°C
IR : min	*-23,8°C
SP01	-0,2°C

20.2.2005

19:12:03



comments:

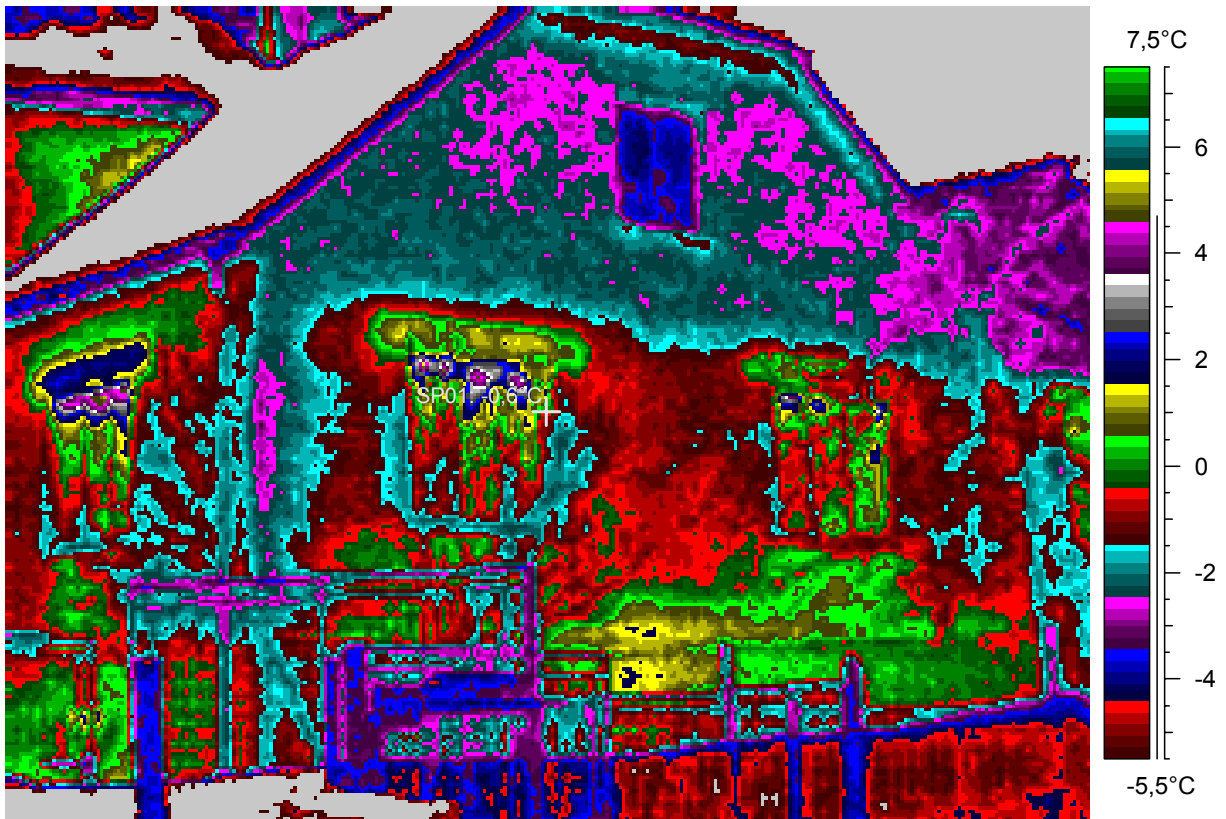
blabla

5 - Ir_2107.jpg

Label	Value
IR : max	5,4°C
IR : min	*-26,7°C
SP01	-0,6°C

20.2.2005

19:12:52



comments:

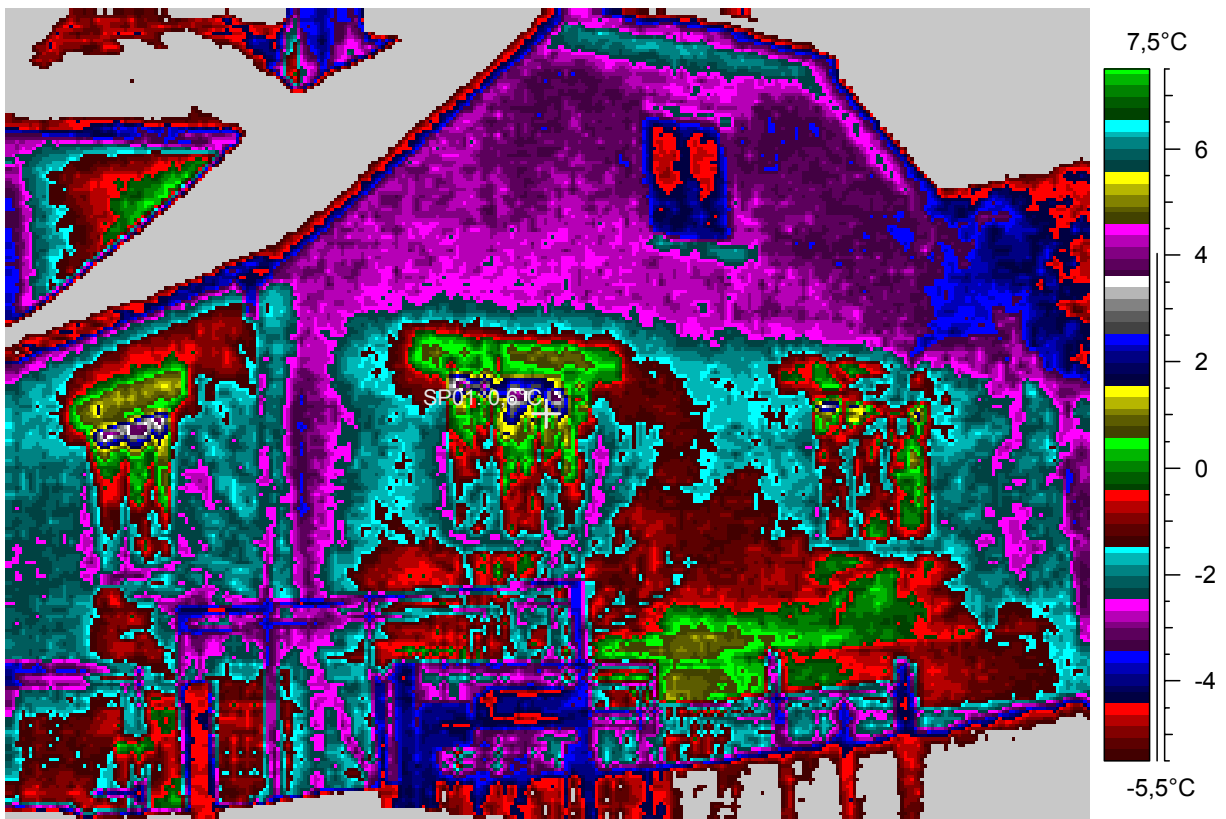
blabla

6 - Ir_2108.jpg

Label	Value
IR : max	5,7°C
IR : min	*-28,4°C
SP01	0,6°C

20.2.2005

19:13:07



comments:

blabla

7 - Ir_2109.jpg

Label	Value
IR : max	7,3°C
IR : min	-9,6°C
SP01	0,5°C

20.2.2005

19:14:15



comments:

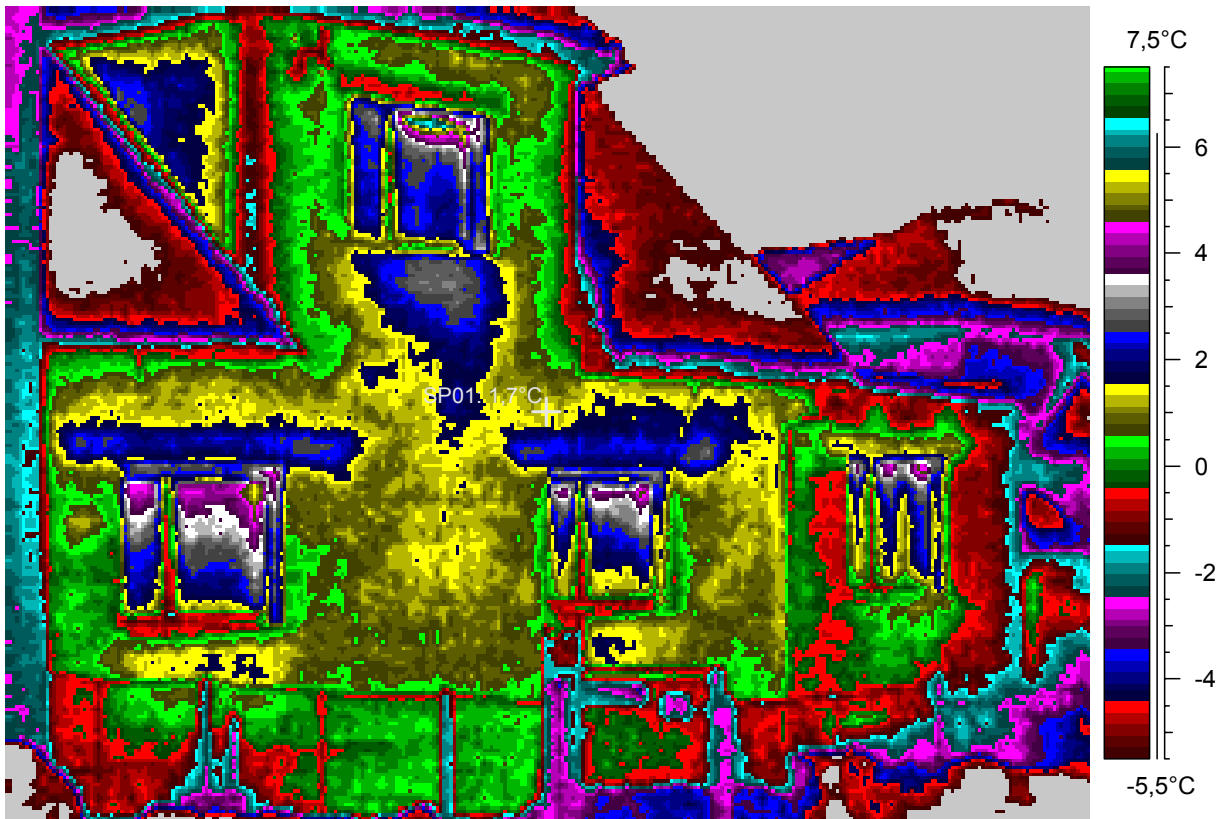
blabla

8 - Ir_2110.jpg

Label	Value
IR : max	7,1°C
IR : min	-10,6°C
SP01	1,7°C

20.2.2005

19:14:21



comments:

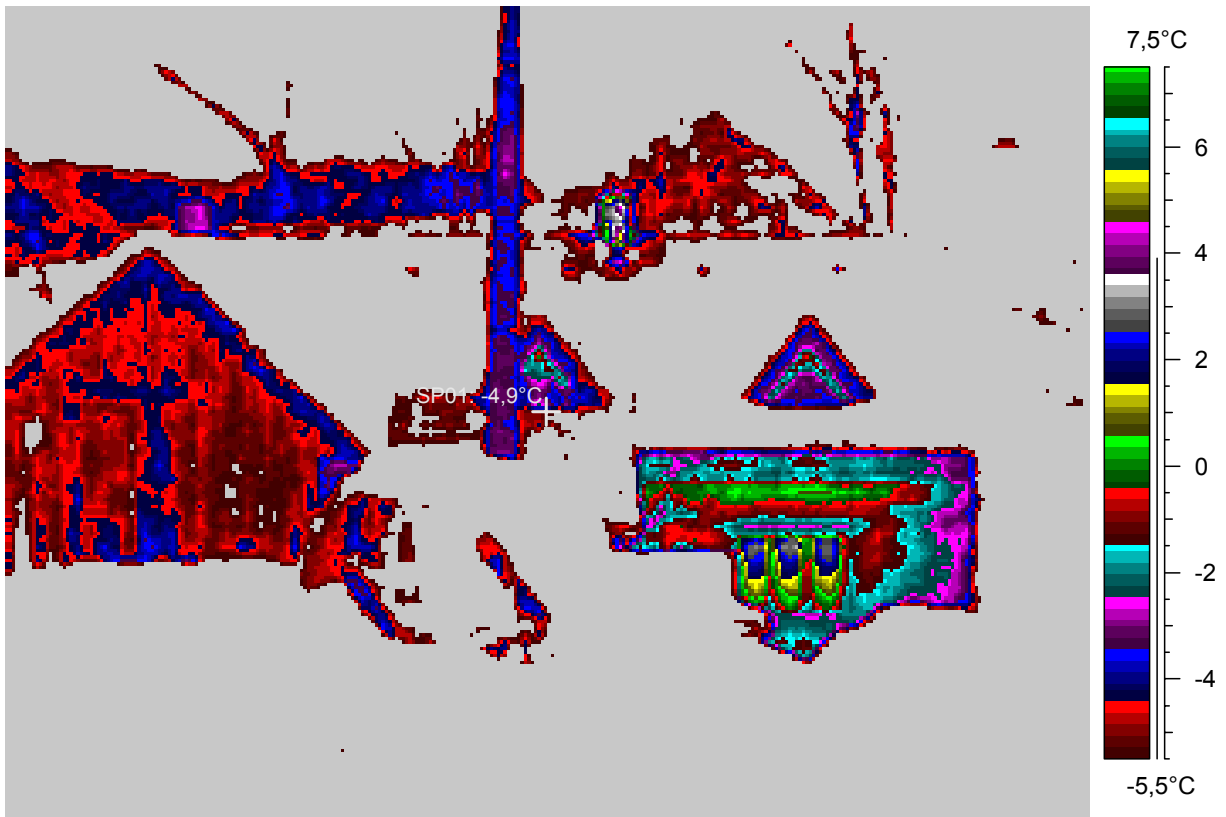
blabla

9 - Ir_2111.jpg

Label	Value
IR : max	5,7°C
IR : min	-17,0°C
SP01	-4,9°C

20.2.2005

19:22:04



comments:

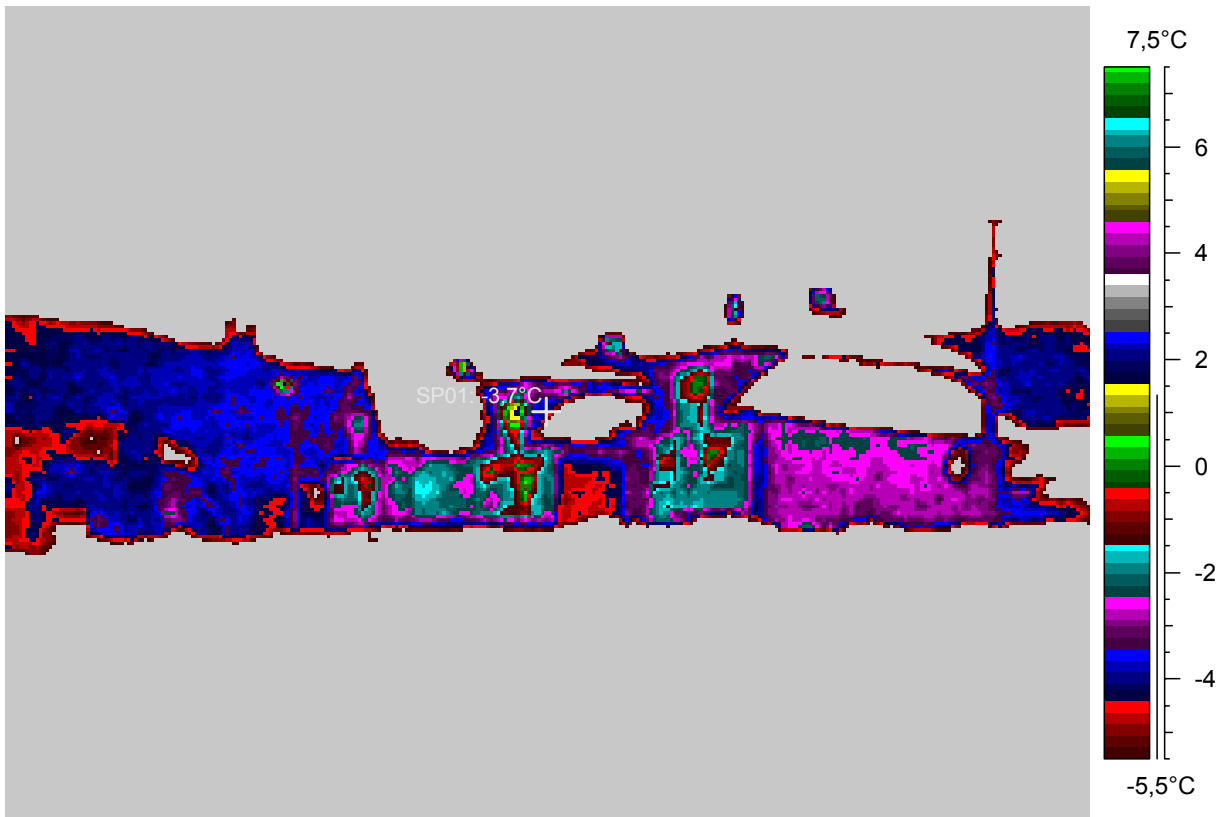
blabla

10 - Ir_2112.jpg

Label	Value
IR : max	3,2°C
IR : min	-11,9°C
SP01	-3,7°C

20.2.2005

19:25:31



comments:

blabla

11 - Ir_2113.jpg

Label	Value
IR : max	2,7°C
IR : min	-19,0°C
SP01	-2,0°C

20.2.2005

19:30:54

