

comments:

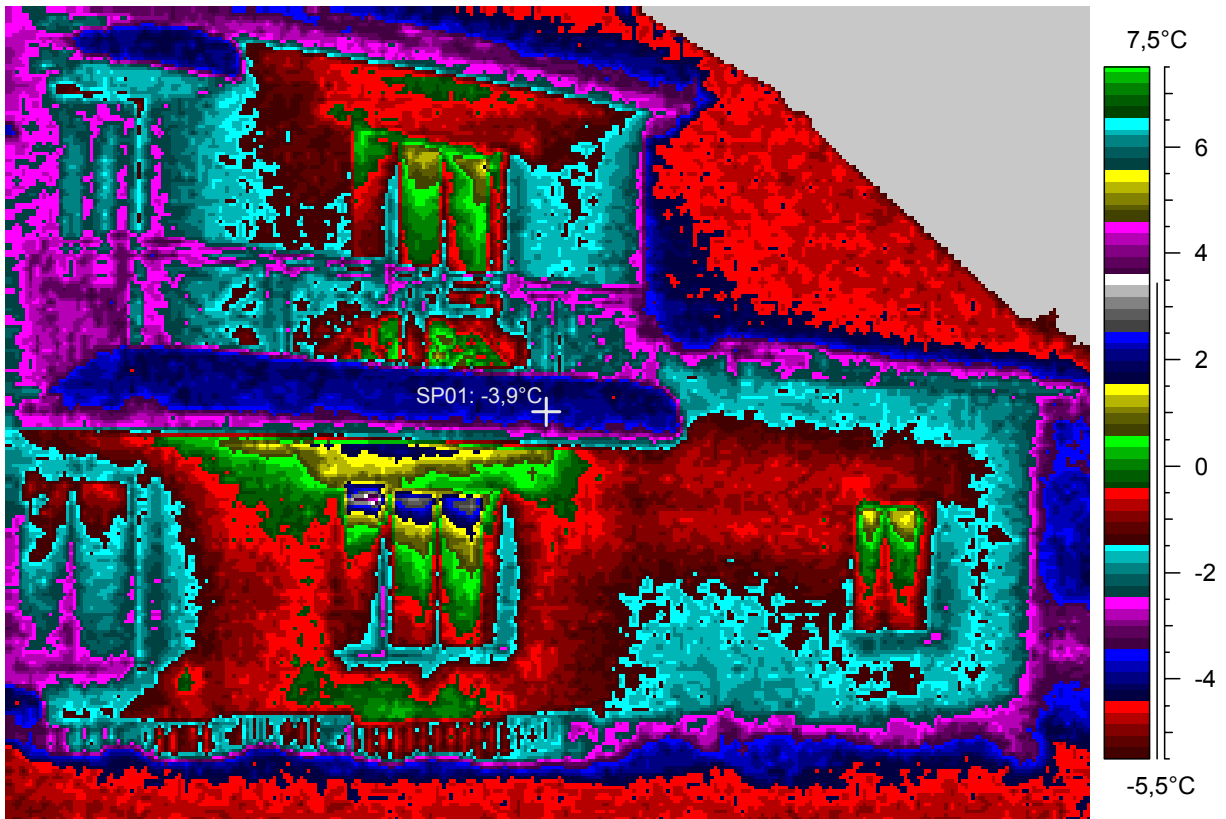
blabla

1 - Ir_1930.jpg

Label	Value
IR : max	4,6°C
IR : min	-8,7°C
SP01	-3,9°C

19.2.2005

22:24:50



comments:

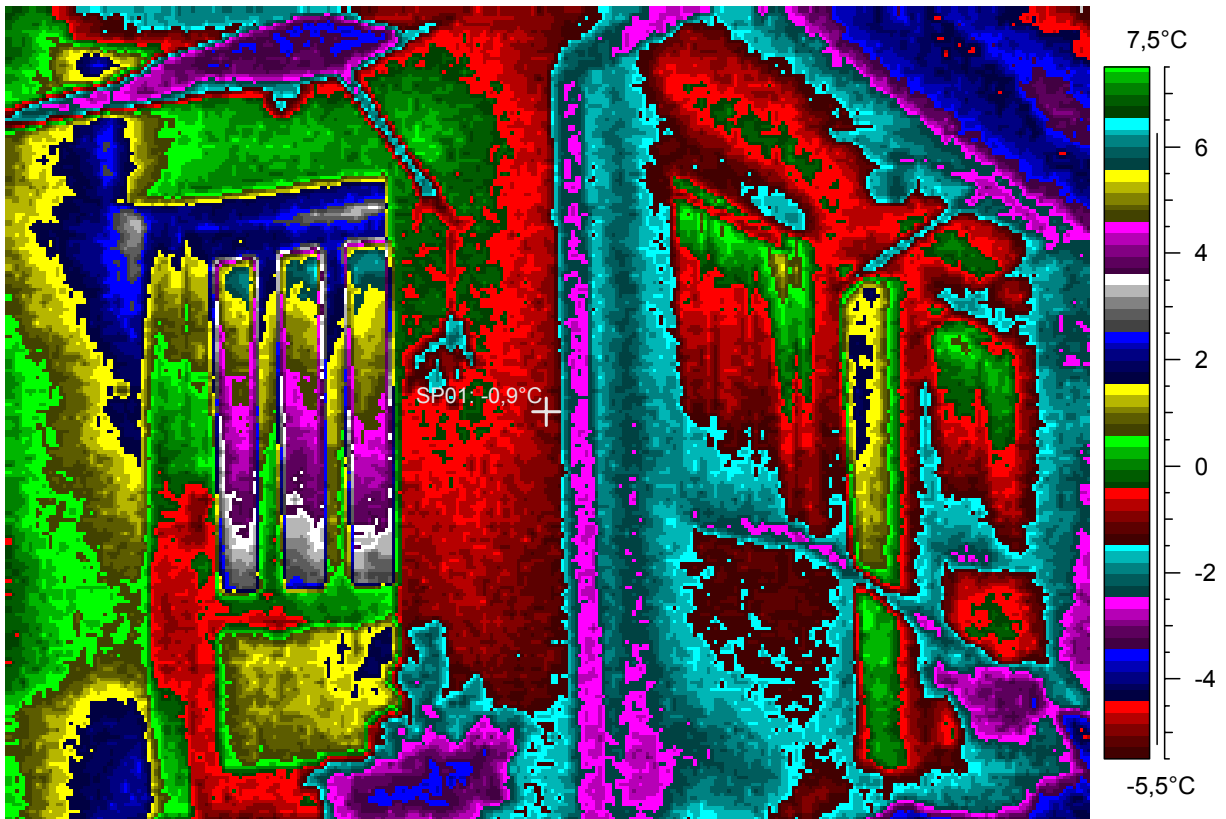
blabla

2 - Ir_1931.jpg

Label	Value
IR : max	6,5°C
IR : min	-5,5°C
SP01	-0,9°C

19.2.2005

22:26:41



comments:

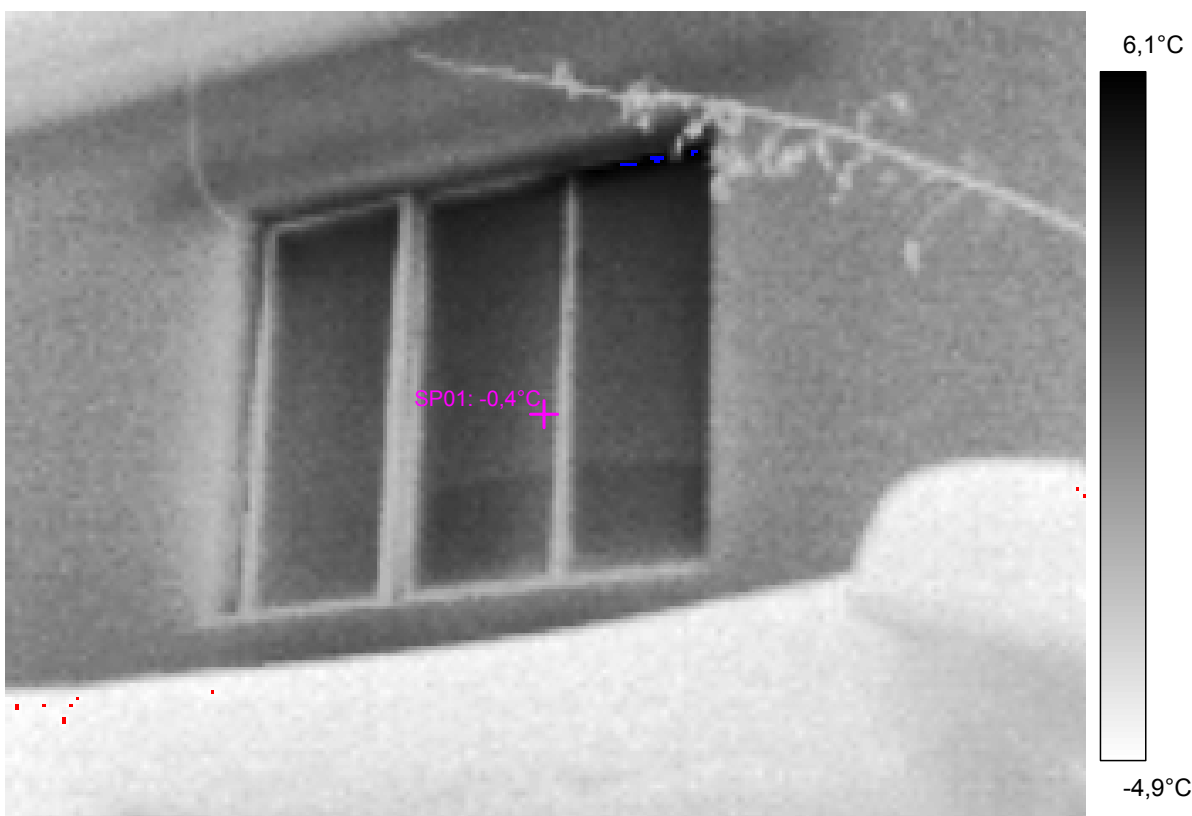
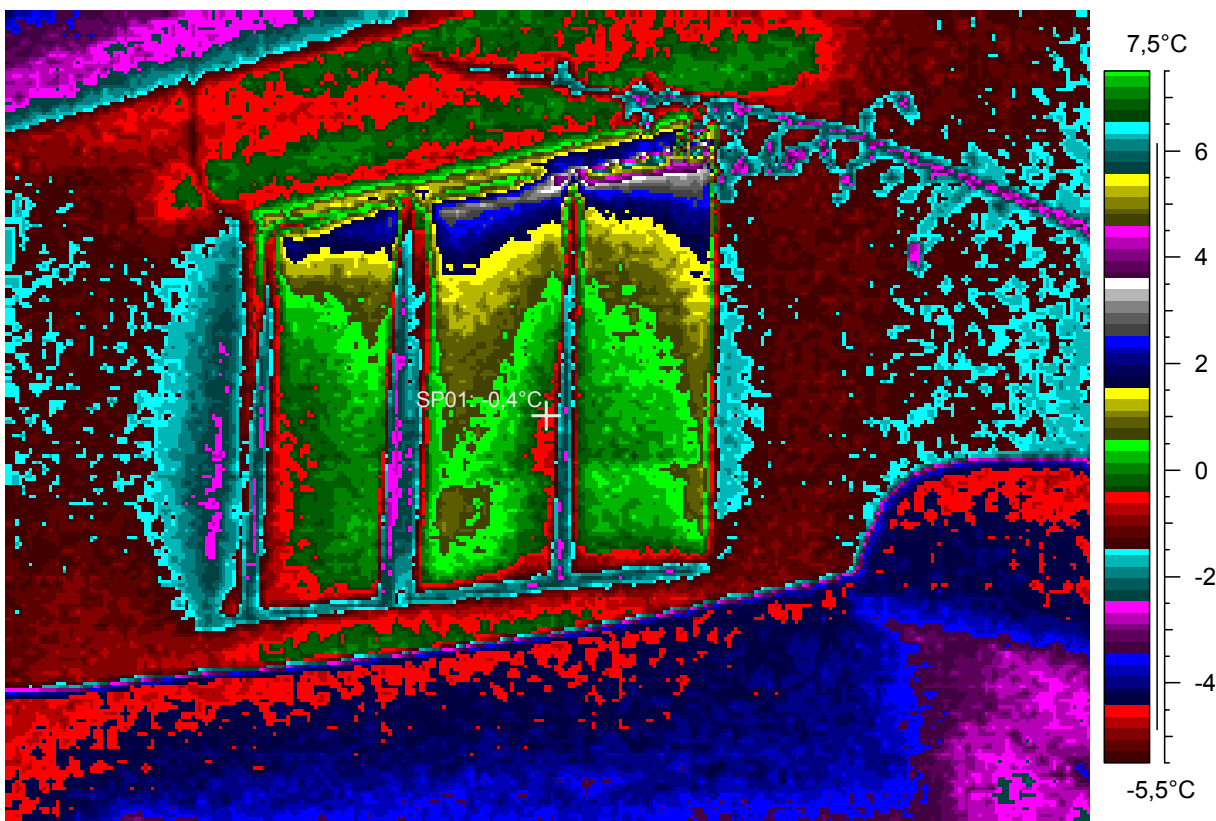
blabla

3 - Ir_1932.jpg

Label	Value
IR : max	7,0°C
IR : min	-5,0°C
SP01	-0,4°C

19.2.2005

22:28:07



comments:

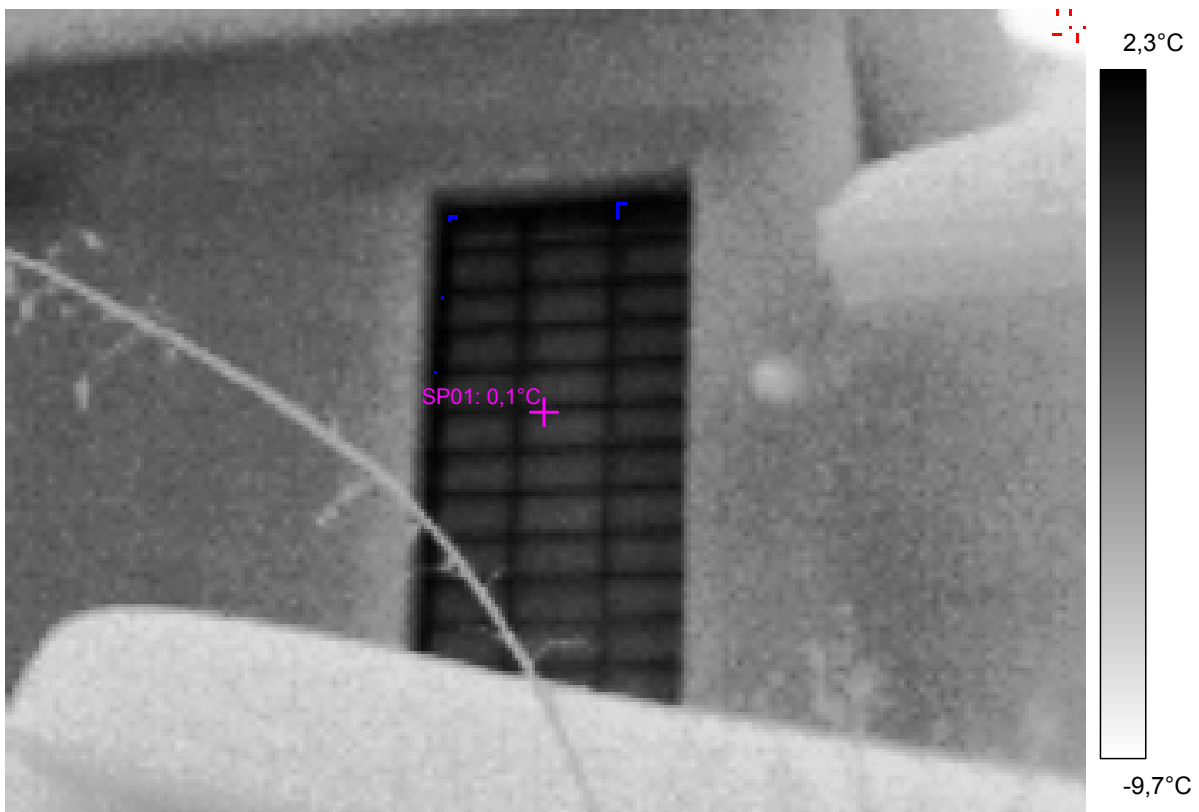
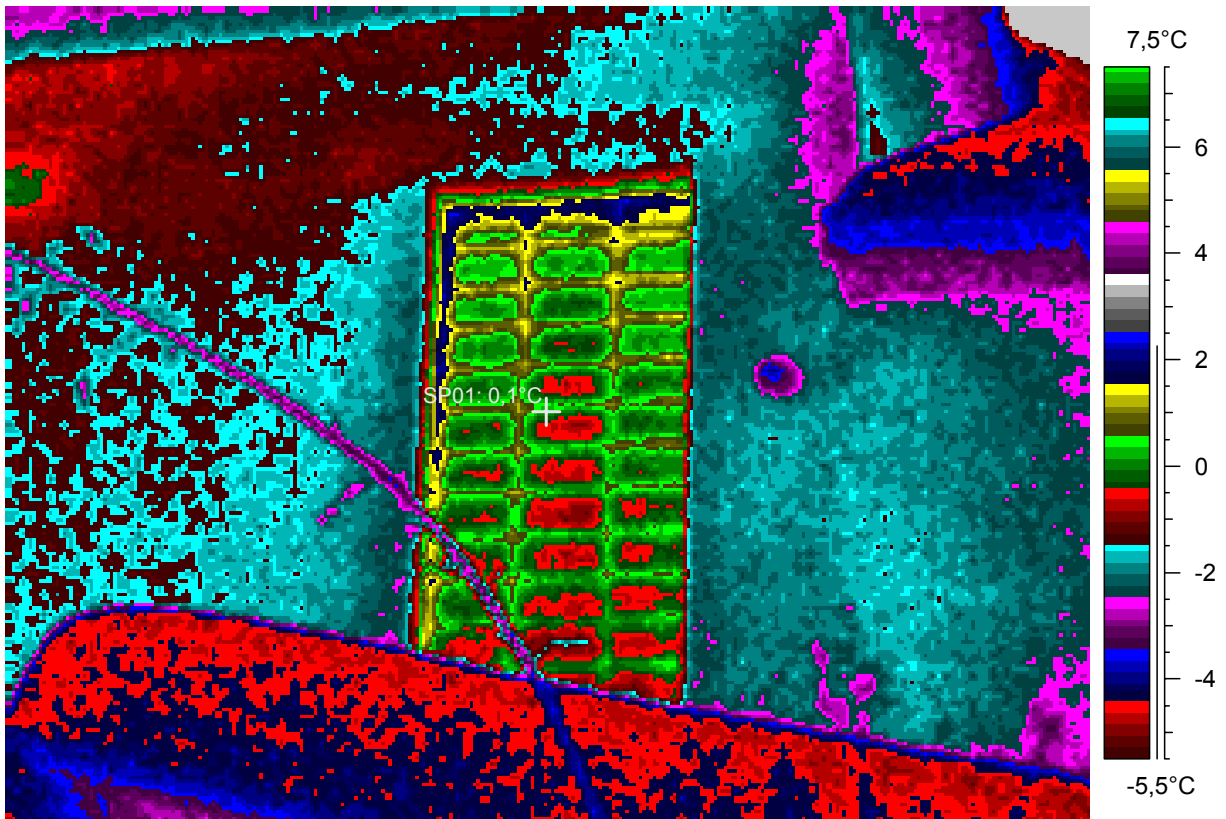
blabla

4 - Ir_1933.jpg

Label	Value
IR : max	2,4°C
IR : min	-9,9°C
SP01	0,1°C

19.2.2005

22:29:19



comments:

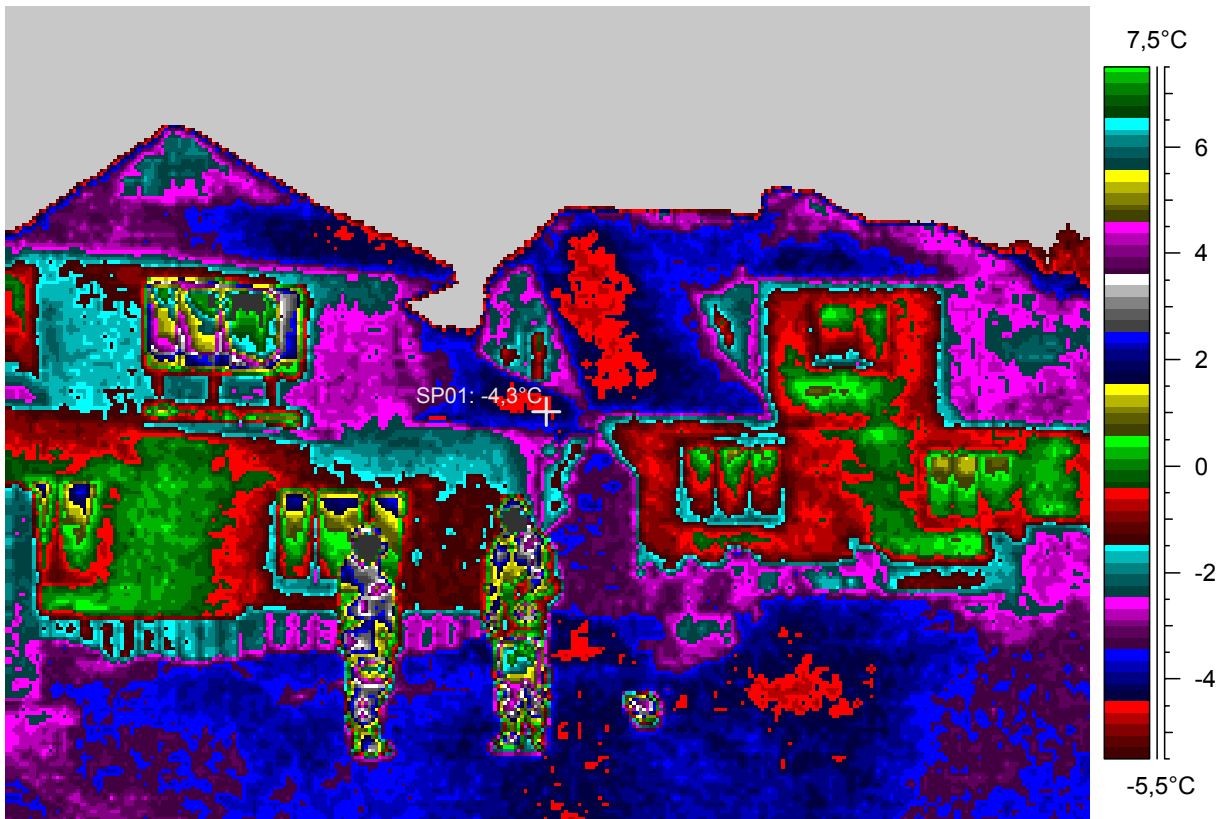
blabla

5 - Ir_1937.jpg

Label	Value
IR : max	21,4°C
IR : min	-8,7°C
SP01	-4,3°C

19.2.2005

23:45:42



comments:

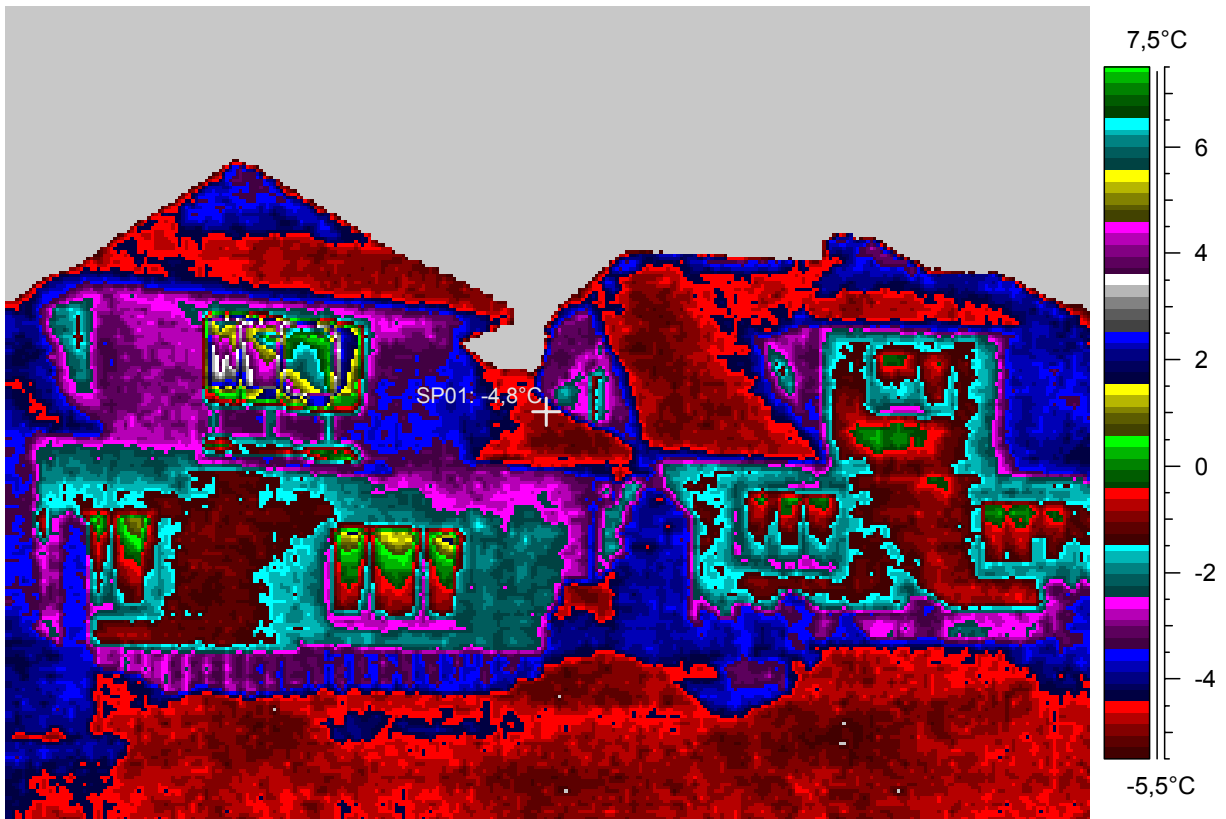
blabla

6 - Ir_1938.jpg

Label	Value
IR : max	8,0°C
IR : min	-9,4°C
SP01	-4,8°C

19.2.2005

23:46:24



comments:

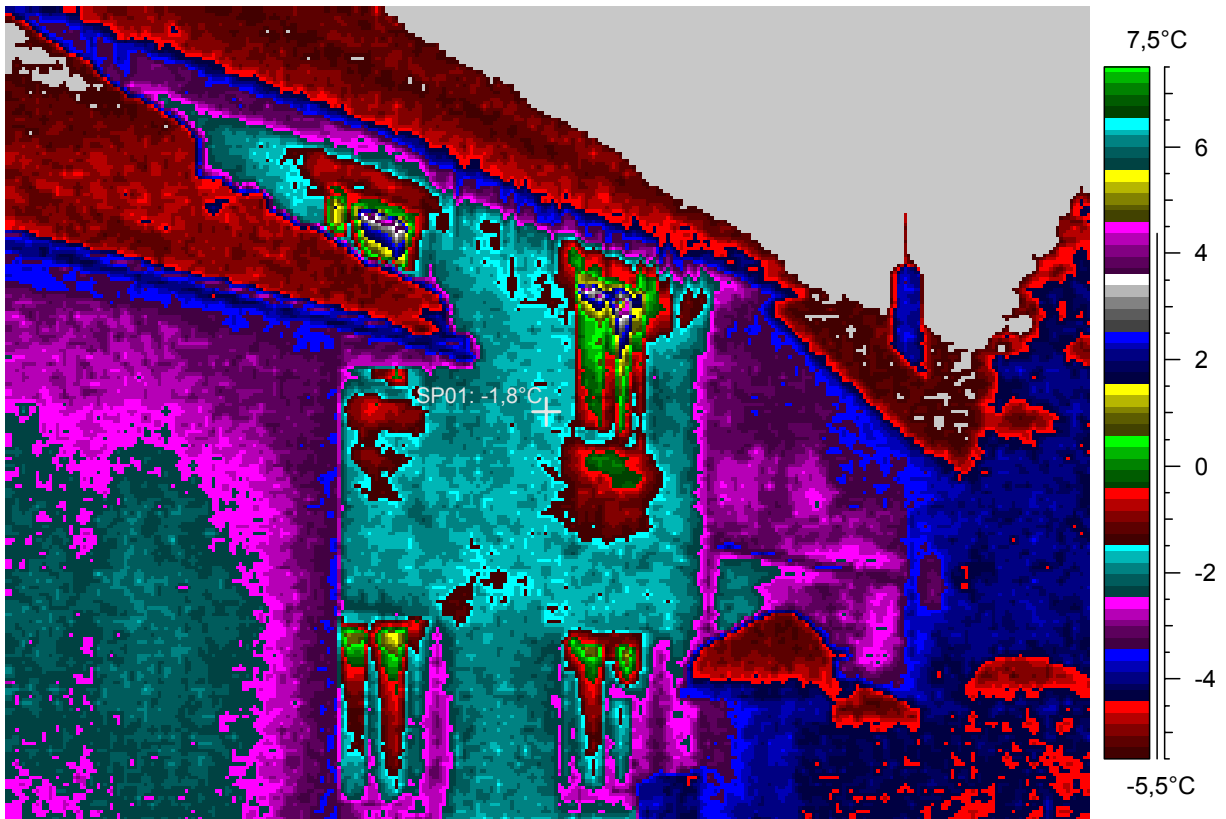
blabla

7 - Ir_1939.jpg

Label	Value
IR : max	6,3°C
IR : min	-9,8°C
SP01	-1,8°C

19.2.2005

23:49:20



comments:

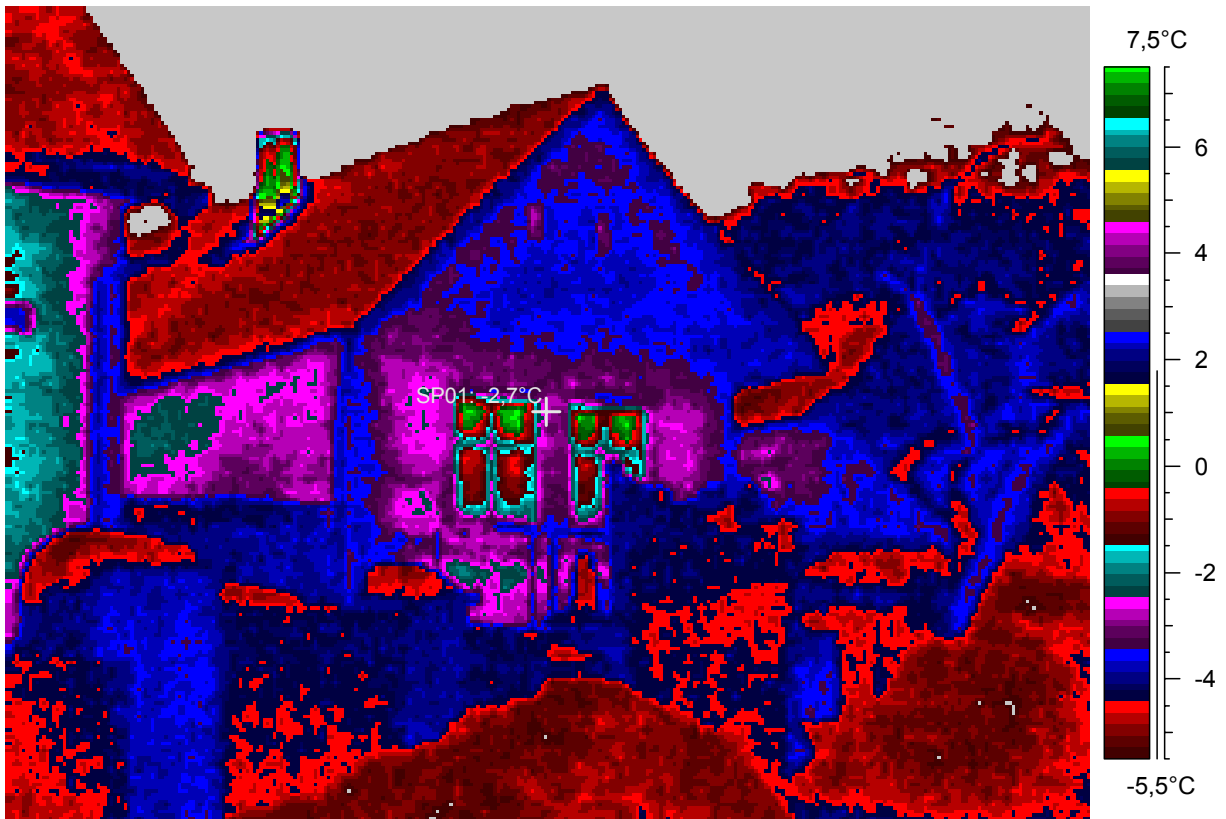
blabla

8 - Ir_1940.jpg

Label	Value
IR : max	2,8°C
IR : min	-9,7°C
SP01	-2,7°C

19.2.2005

23:50:02



comments:

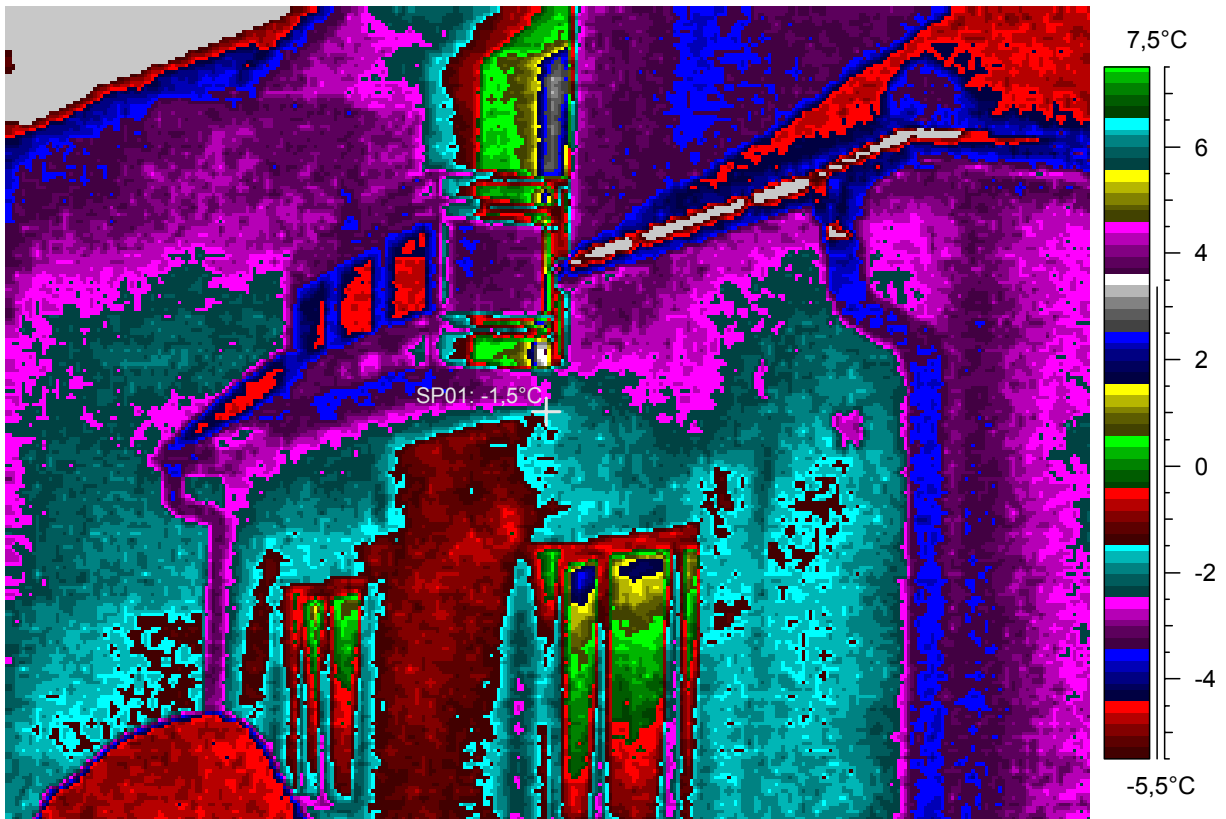
blabla

9 - Ir_1941.jpg

Label	Value
IR : max	3,8°C
IR : min	-9,1°C
SP01	-1,5°C

19.2.2005

23:50:28



comments:

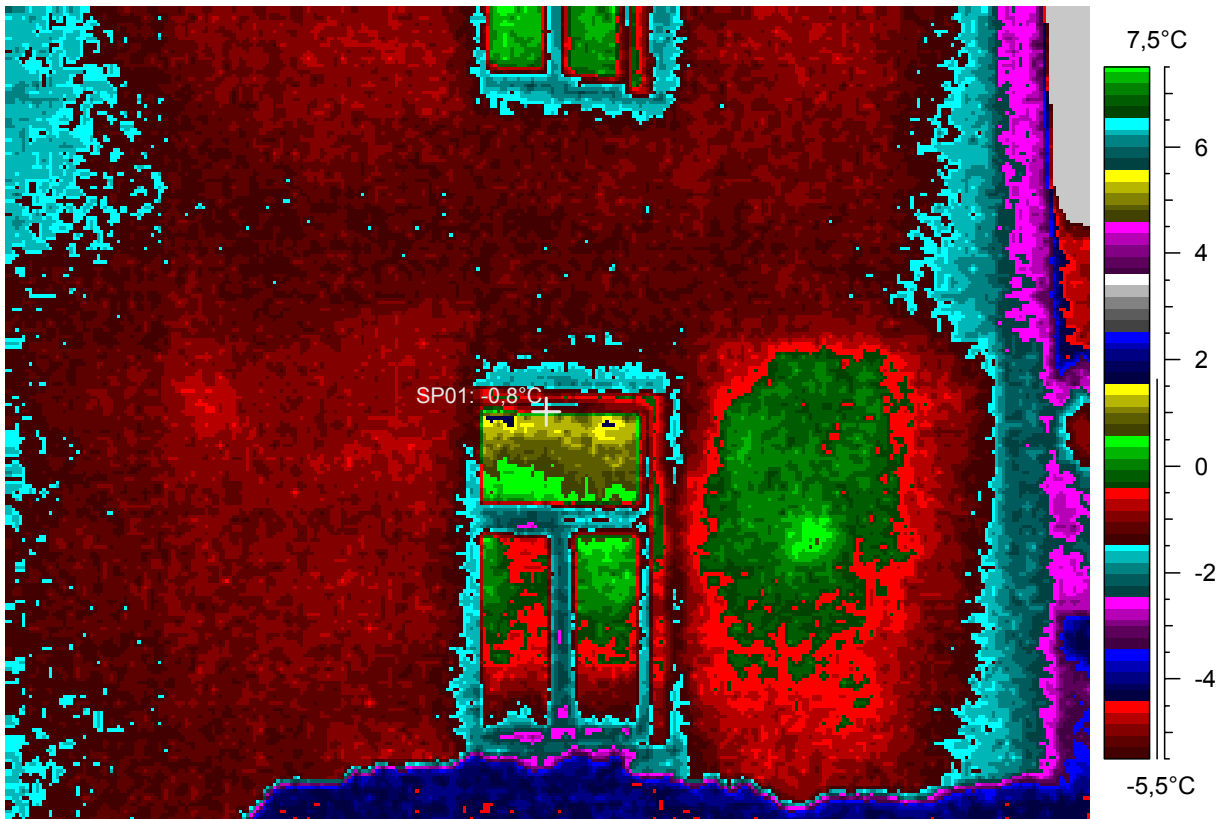
blabla

10 - Ir_1942.jpg

Label	Value
IR : max	1,9°C
IR : min	-8,5°C
SP01	-0,8°C

19.2.2005

23:53:58



comments:

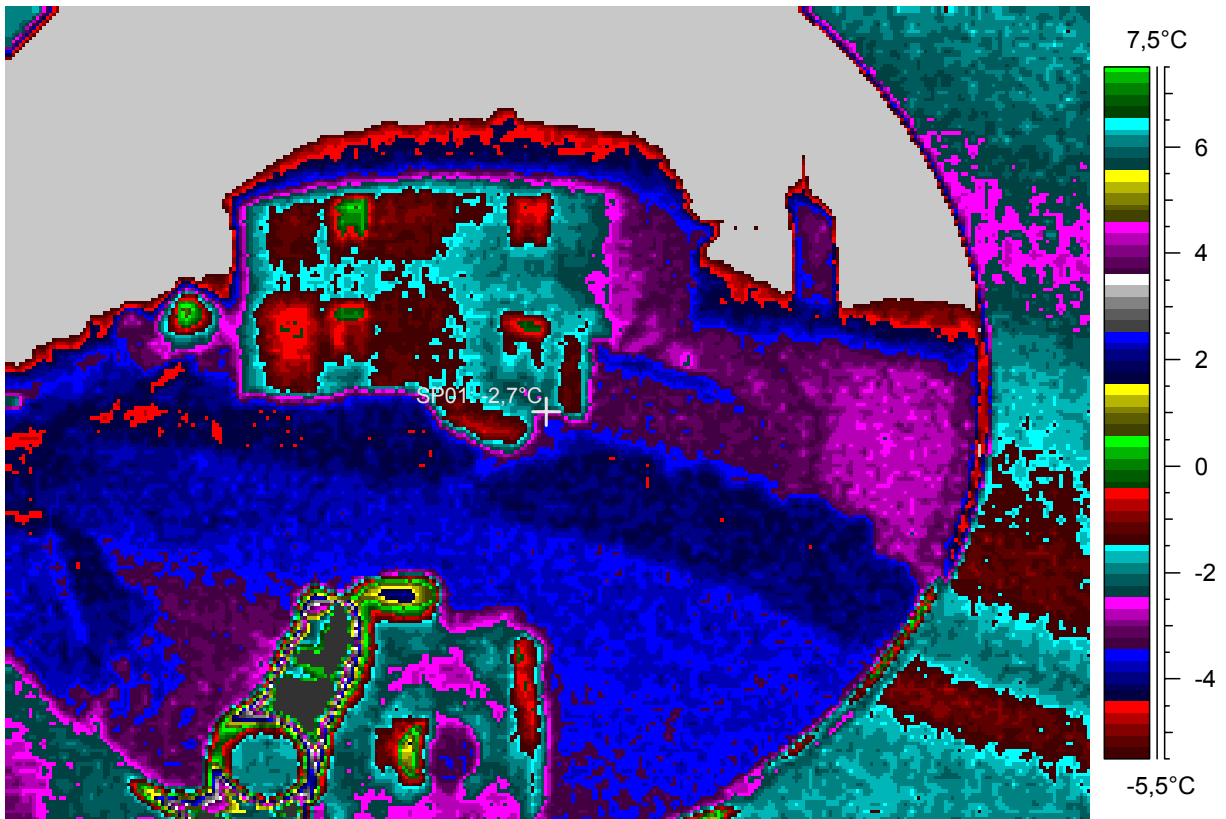
blabla

11 - Ir_1943.jpg

Label	Value
IR : max	15,1°C
IR : min	-9,5°C
SP01	-2,7°C

19.2.2005

23:55:54



comments:

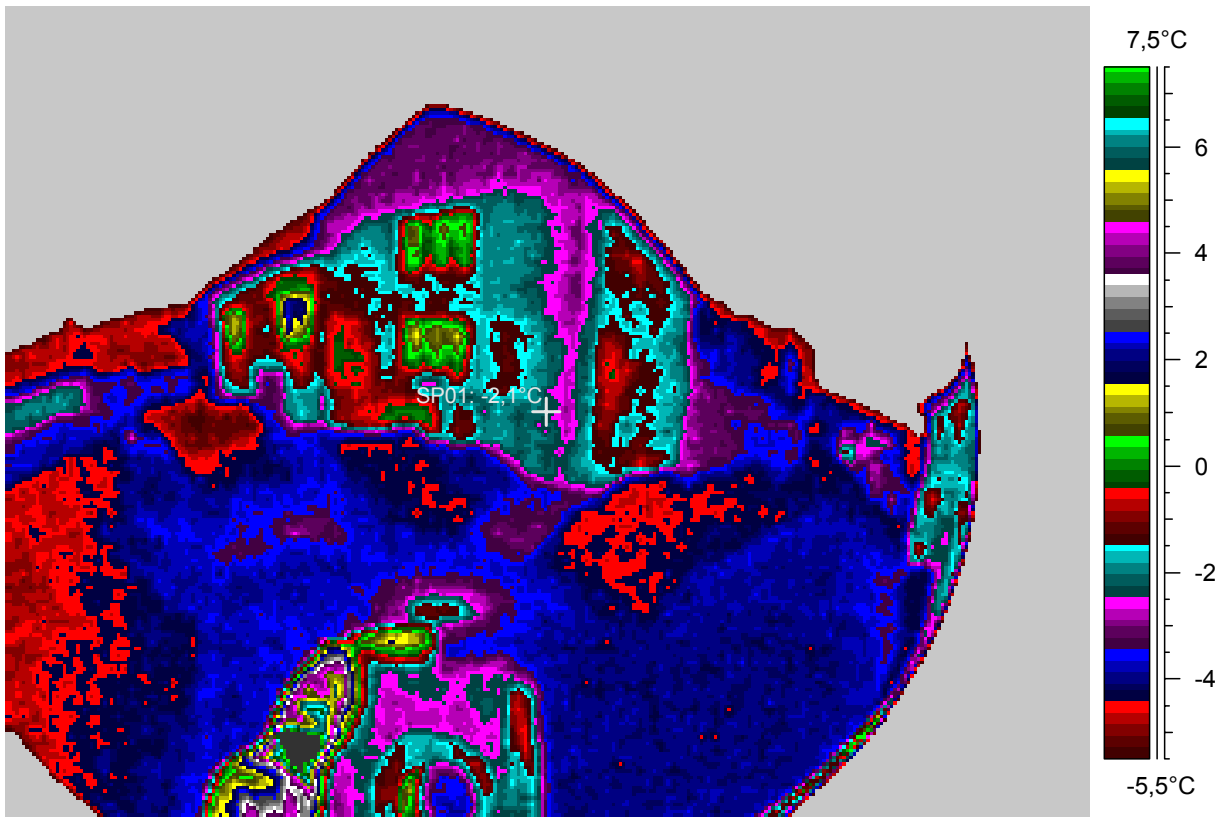
blabla

12 - Ir_1944.jpg

Label	Value
IR : max	14,4°C
IR : min	-10,5°C
SP01	-2,1°C

19.2.2005

23:56:40



comments:

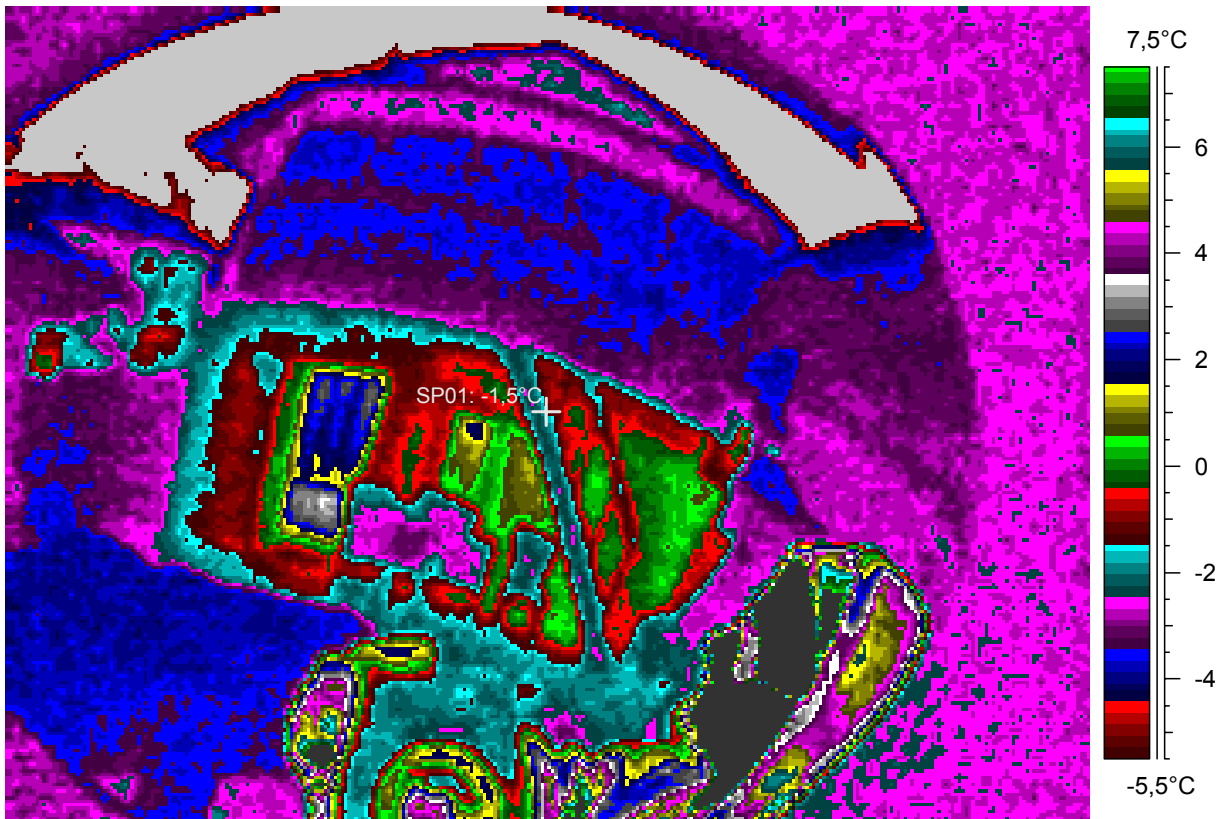
blabla

13 - Ir_1945.jpg

Label	Value
IR : max	27,0°C
IR : min	-9,1°C
SP01	-1,5°C

19.2.2005

23:57:32



comments:

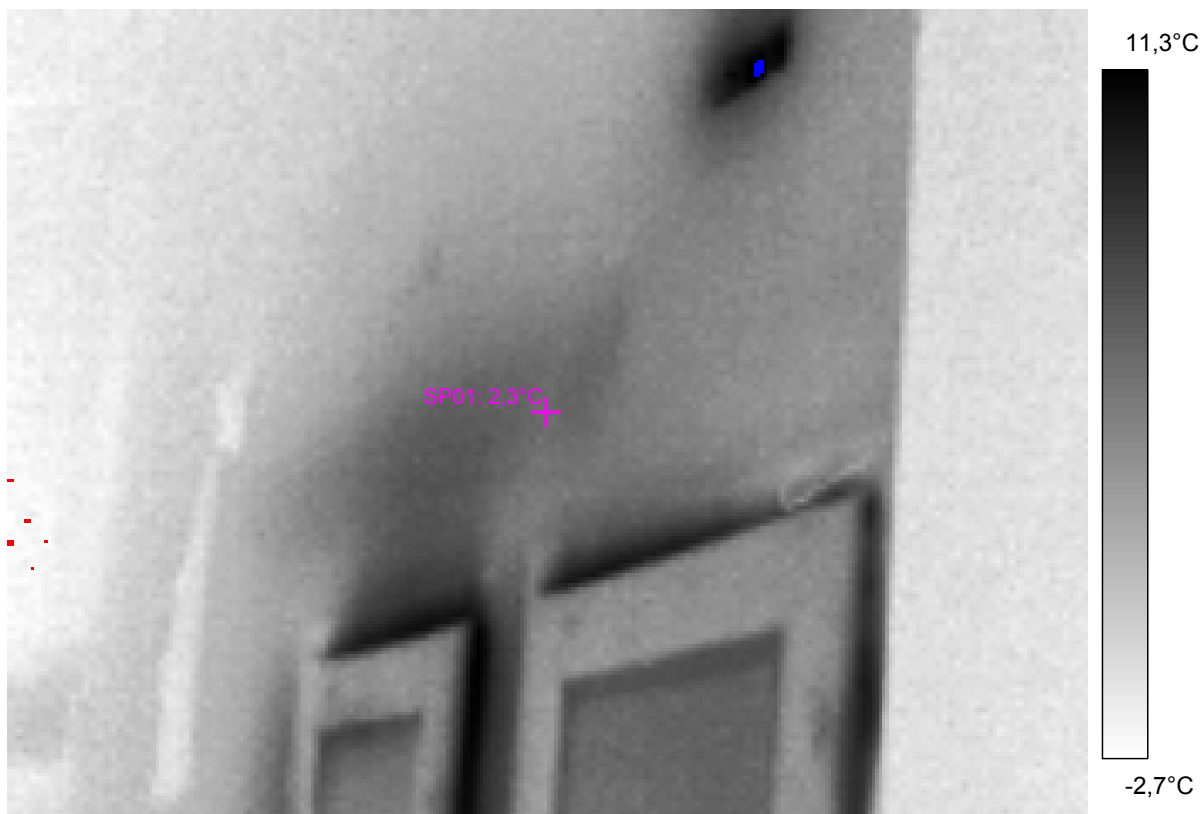
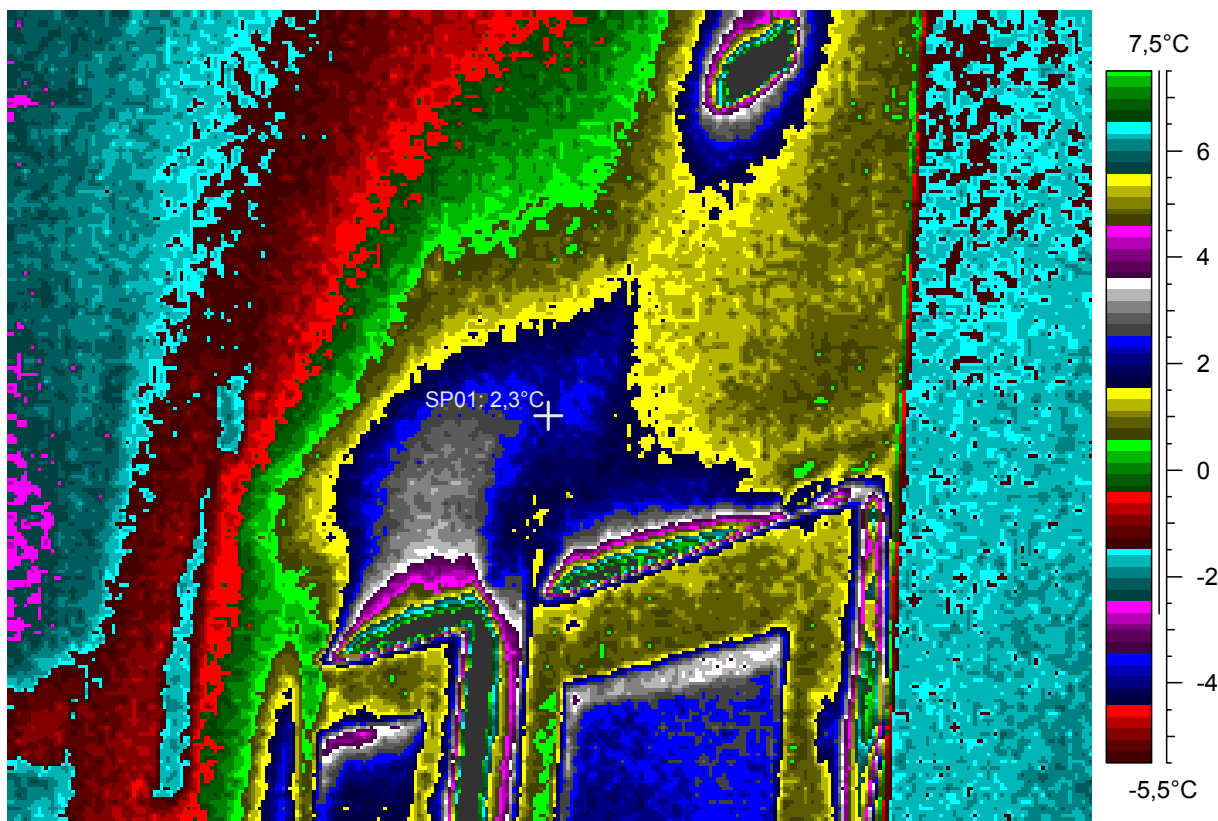
blabla

14 - Ir_1946.jpg

Label	Value
IR : max	11,8°C
IR : min	-2,9°C
SP01	2,3°C

19.2.2005

23:59:55



comments:

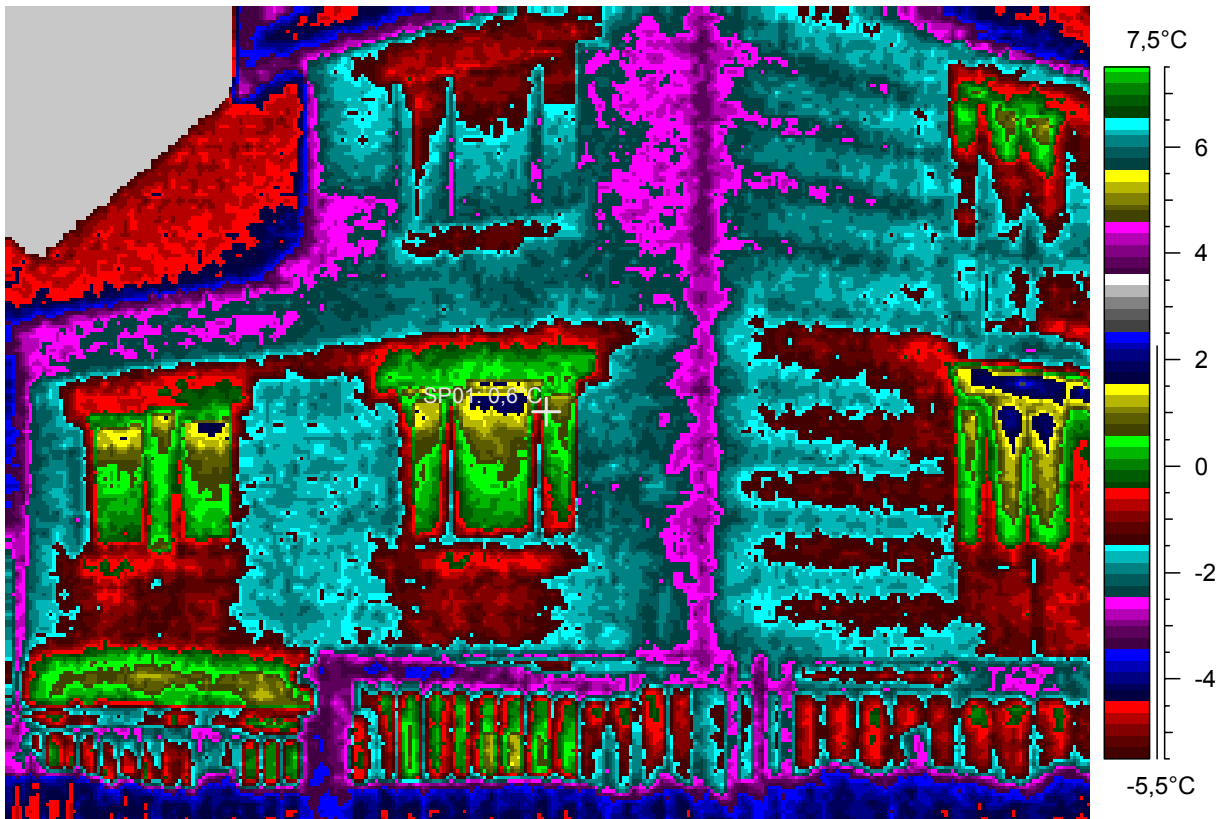
blabla

15 - Ir_1947.jpg

Label	Value
IR : max	2,7°C
IR : min	-8,7°C
SP01	0,6°C

20.2.2005

0:02:56



comments:

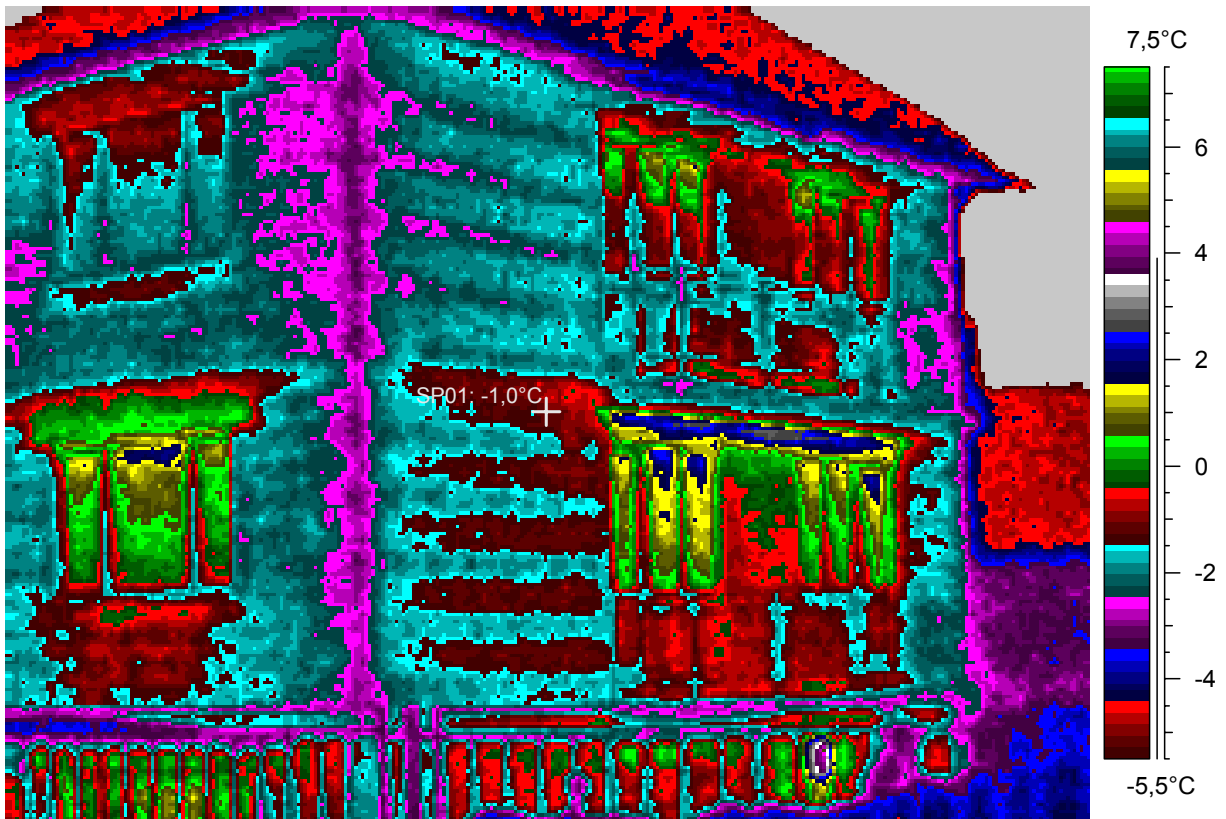
blabla

16 - Ir_1948.jpg

Label	Value
IR : max	4,7°C
IR : min	-8,6°C
SP01	-1,0°C

20.2.2005

0:03:18



comments:

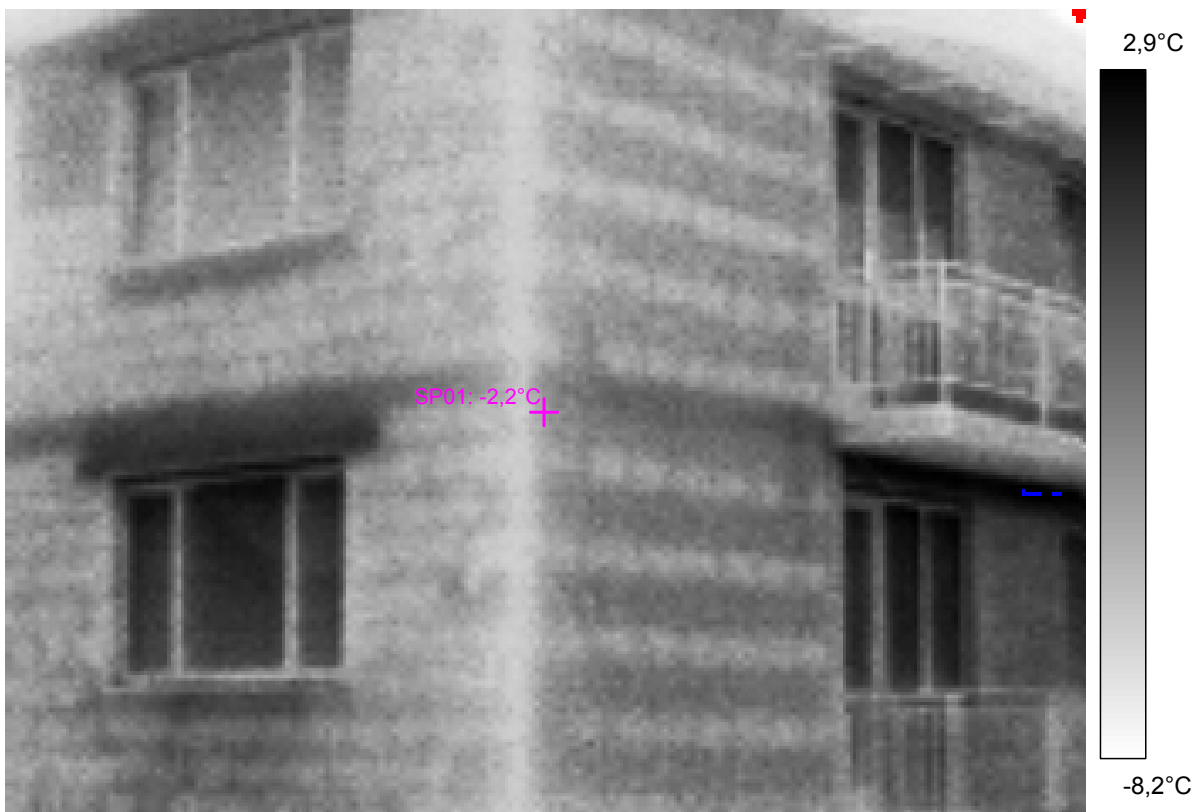
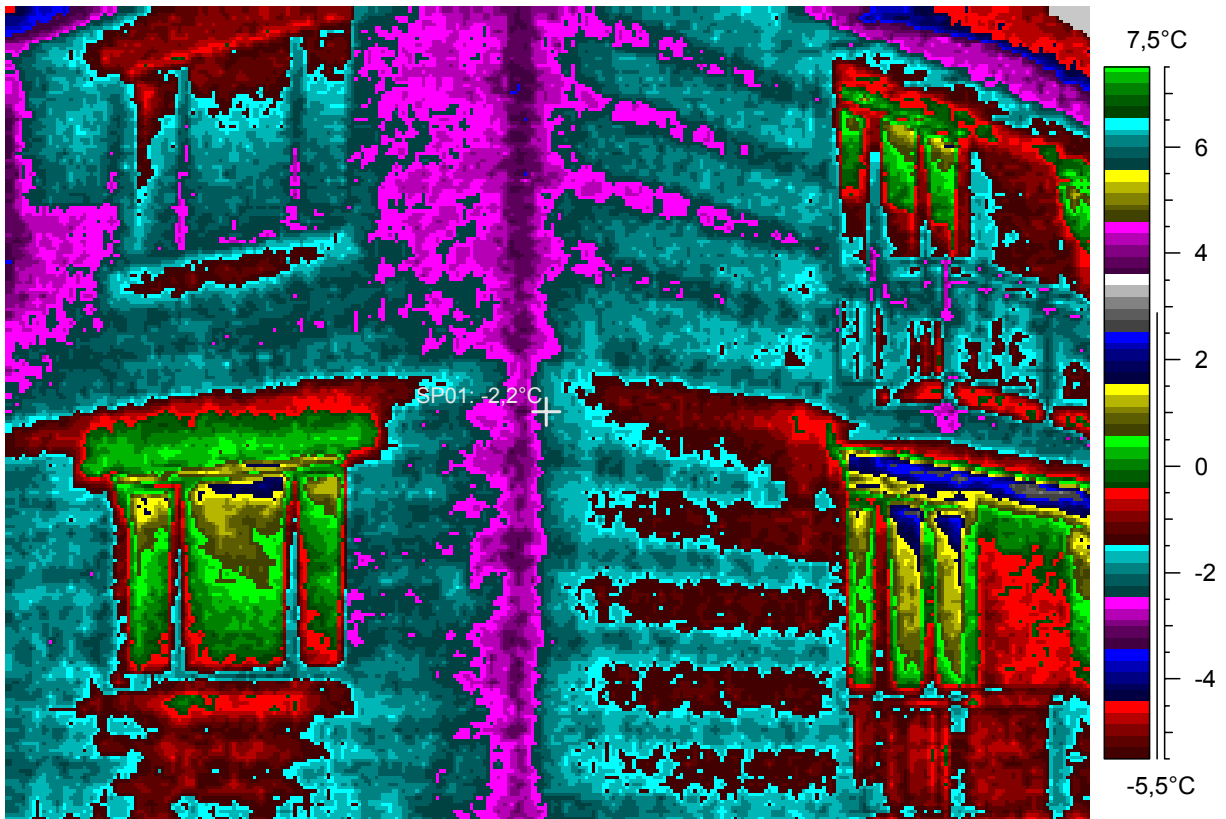
blabla

17 - Ir_1949.jpg

Label	Value
IR : max	3,0°C
IR : min	-8,5°C
SP01	-2,2°C

20.2.2005

0:04:46



comments:

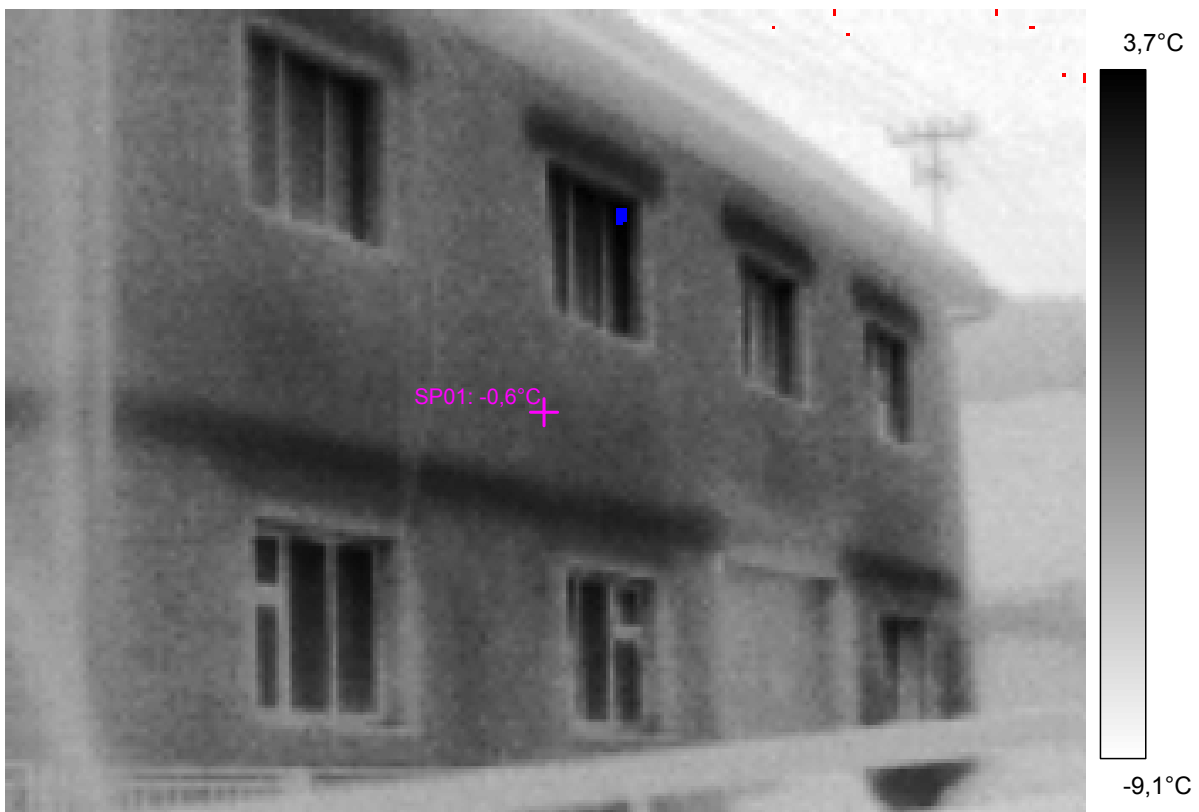
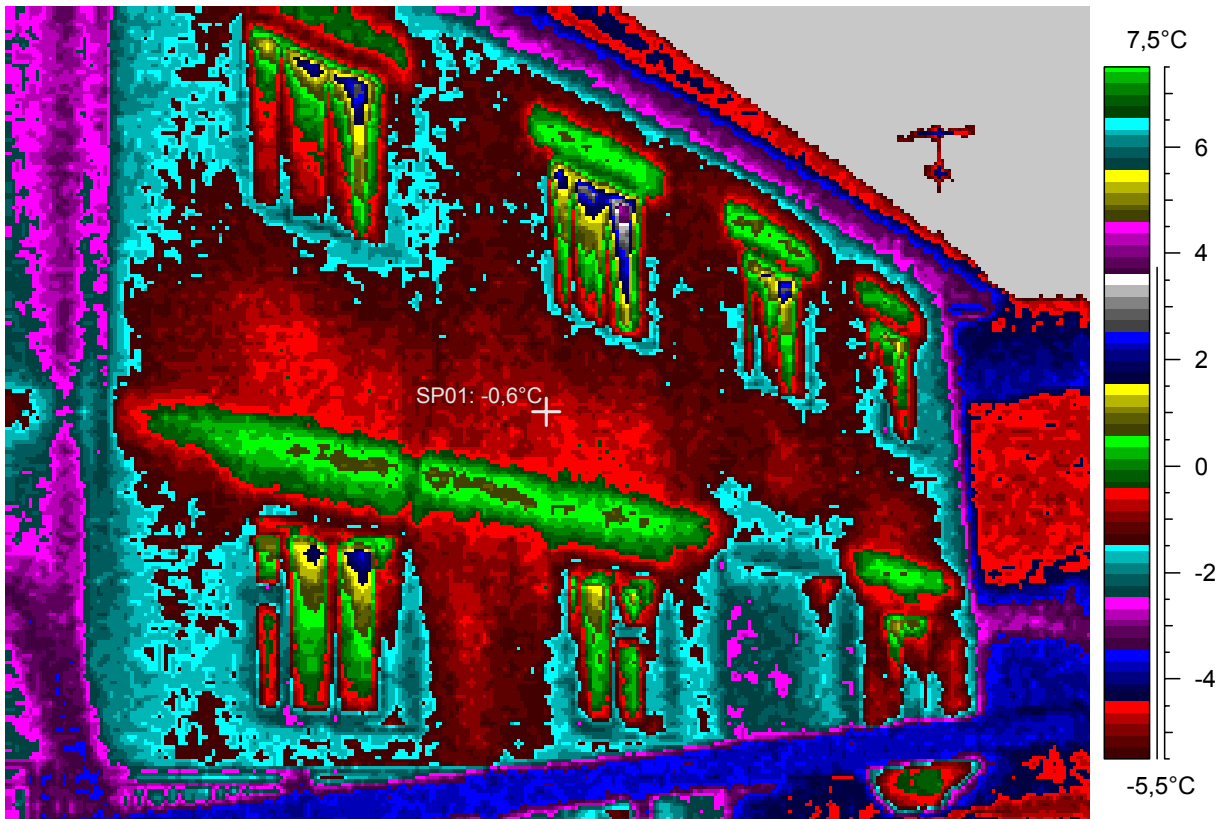
blabla

18 - Ir_1950.jpg

Label	Value
IR : max	4,3°C
IR : min	-9,2°C
SP01	-0,6°C

20.2.2005

0:05:54



comments:

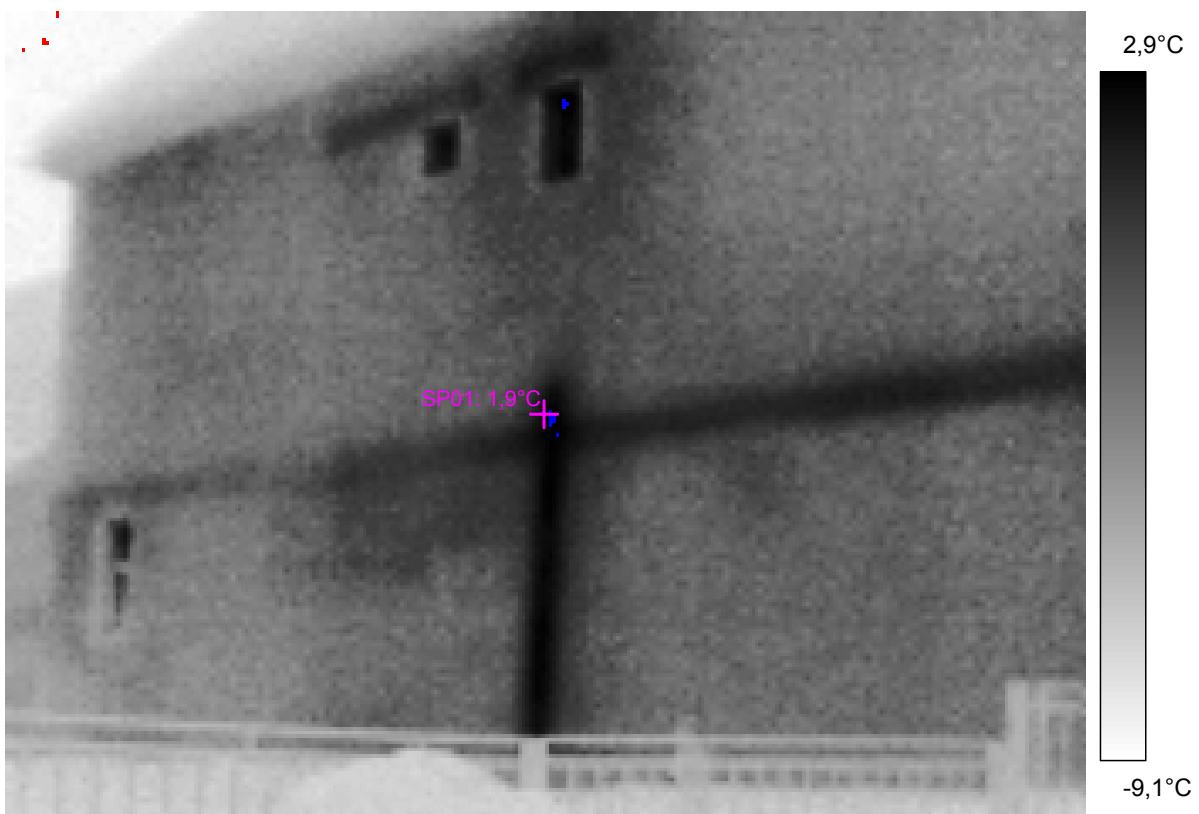
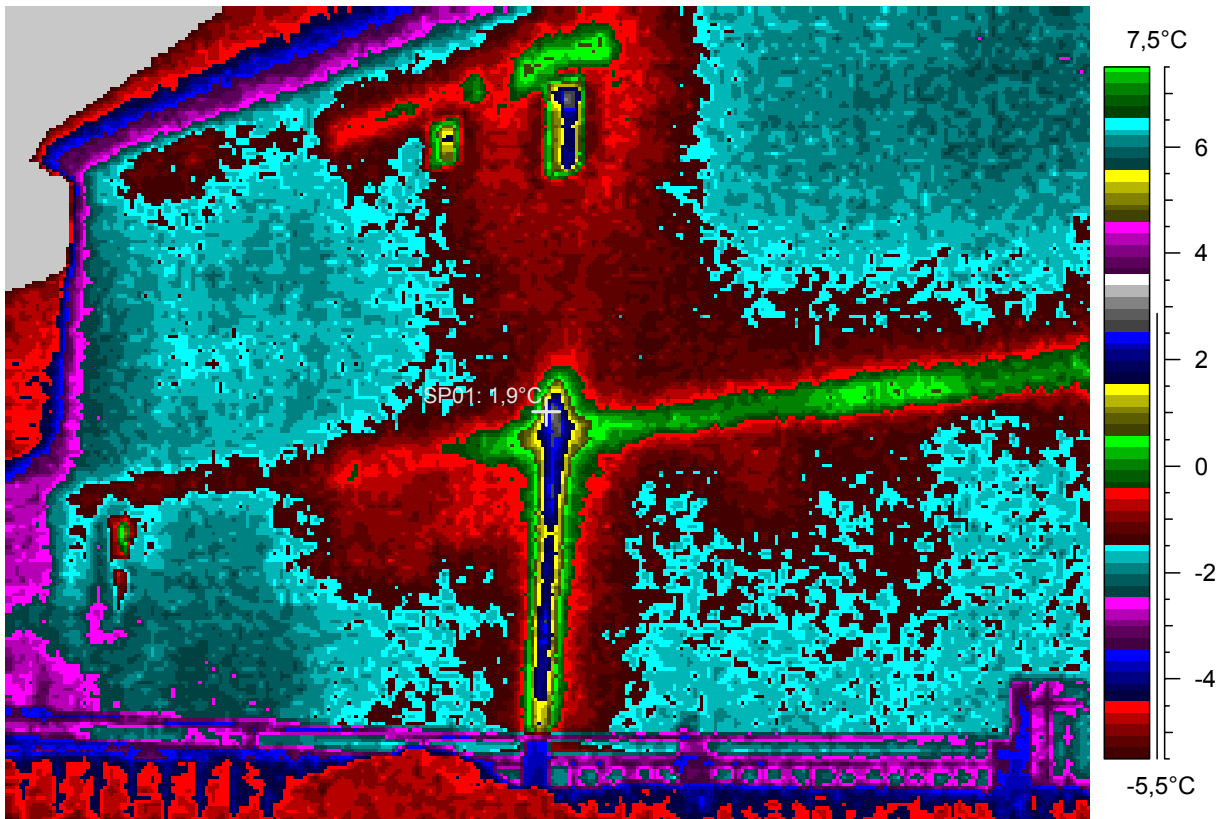
blabla

19 - Ir_1951.jpg

Label	Value
IR : max	3,2°C
IR : min	-9,2°C
SP01	1,9°C

20.2.2005

0:06:39



comments:

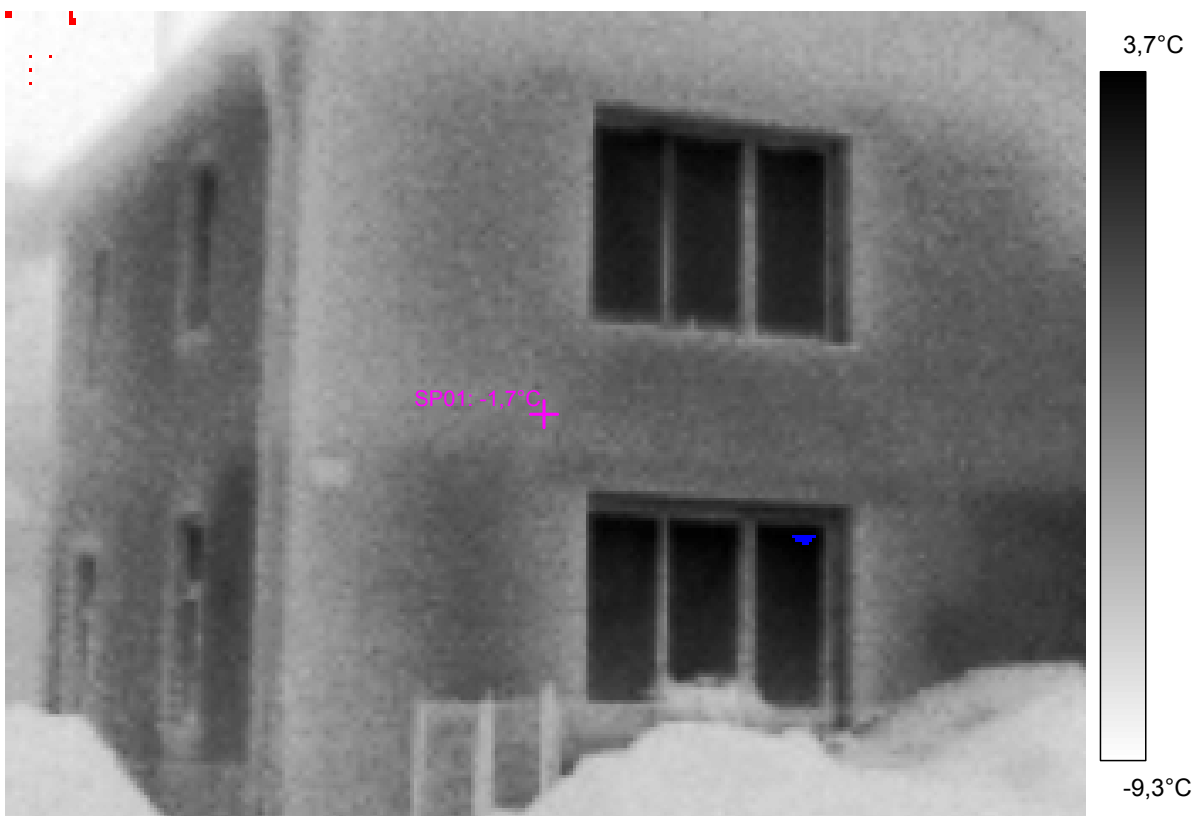
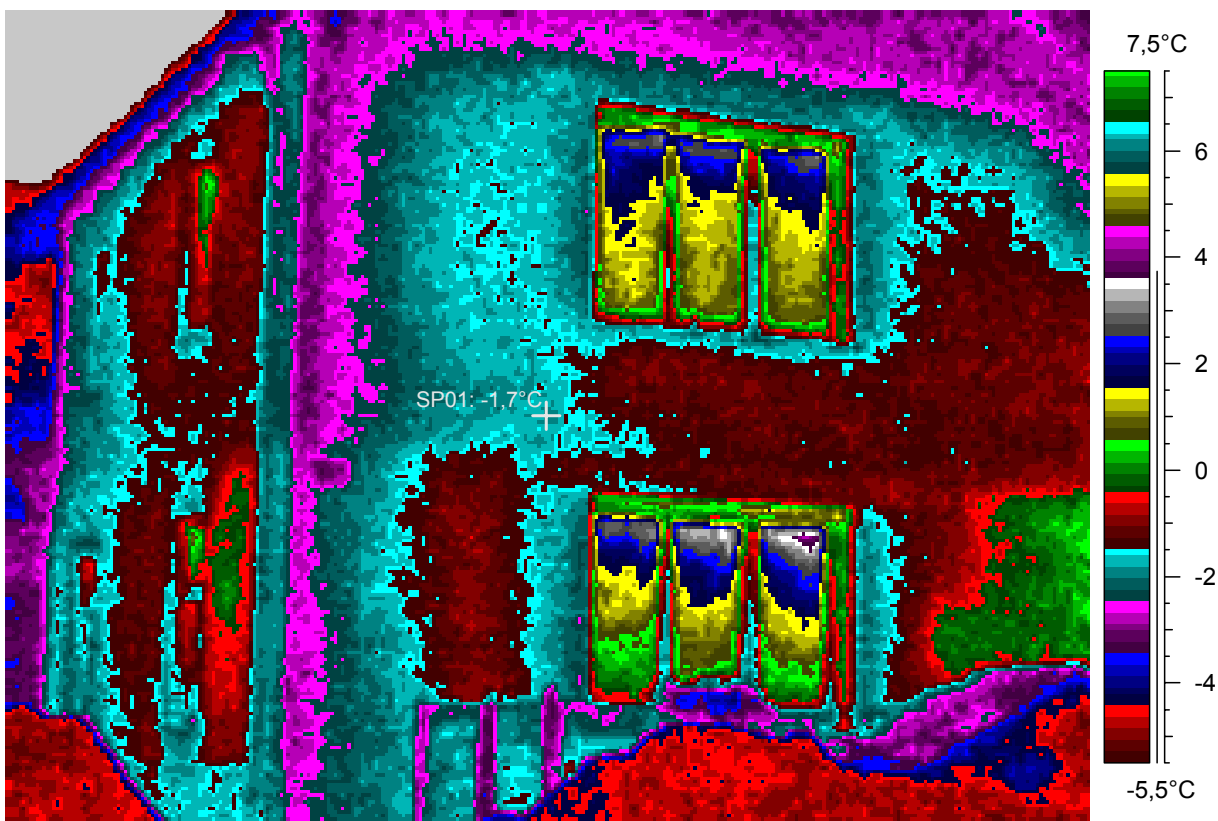
blabla

20 - Ir_1952.jpg

Label	Value
IR : max	4,3°C
IR : min	-9,5°C
SP01	-1,7°C

20.2.2005

0:09:28



comments:

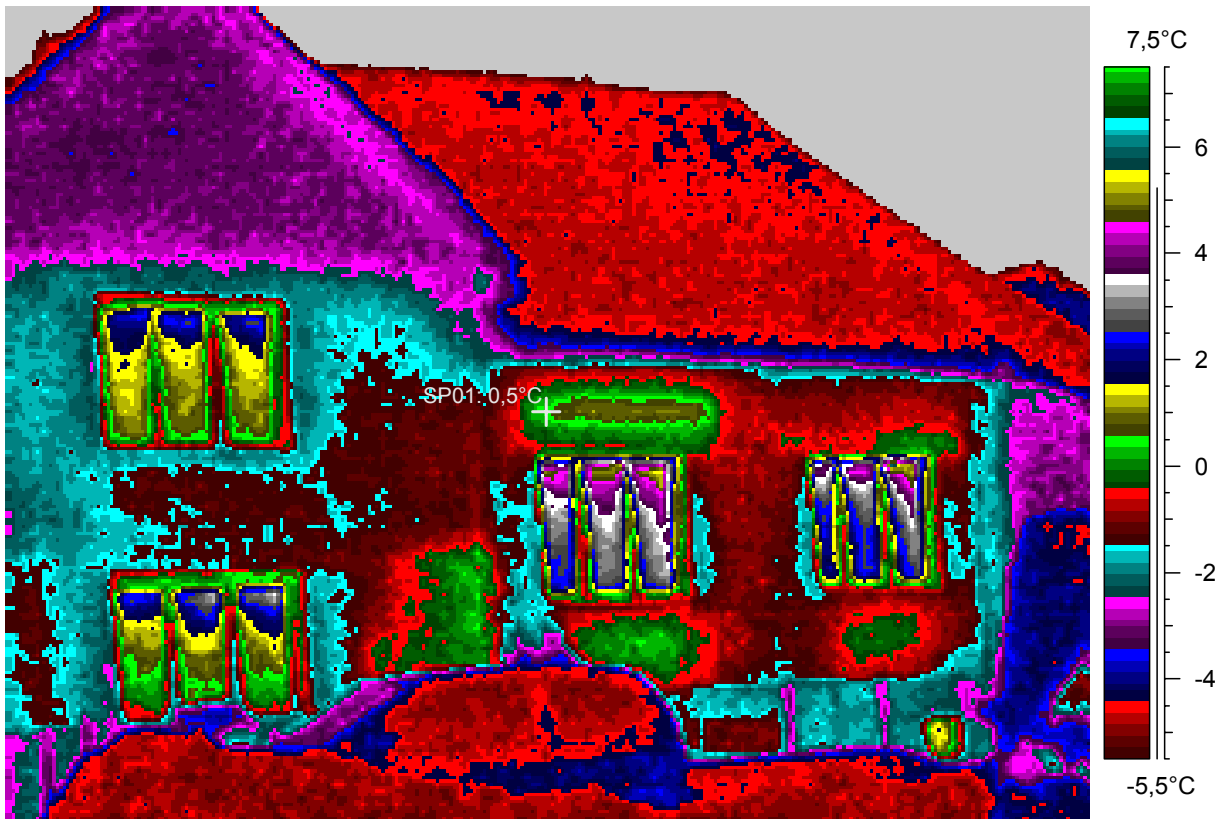
blabla

21 - Ir_1953.jpg

Label	Value
IR : max	5,9°C
IR : min	-9,4°C
SP01	0,5°C

20.2.2005

0:10:08



comments:

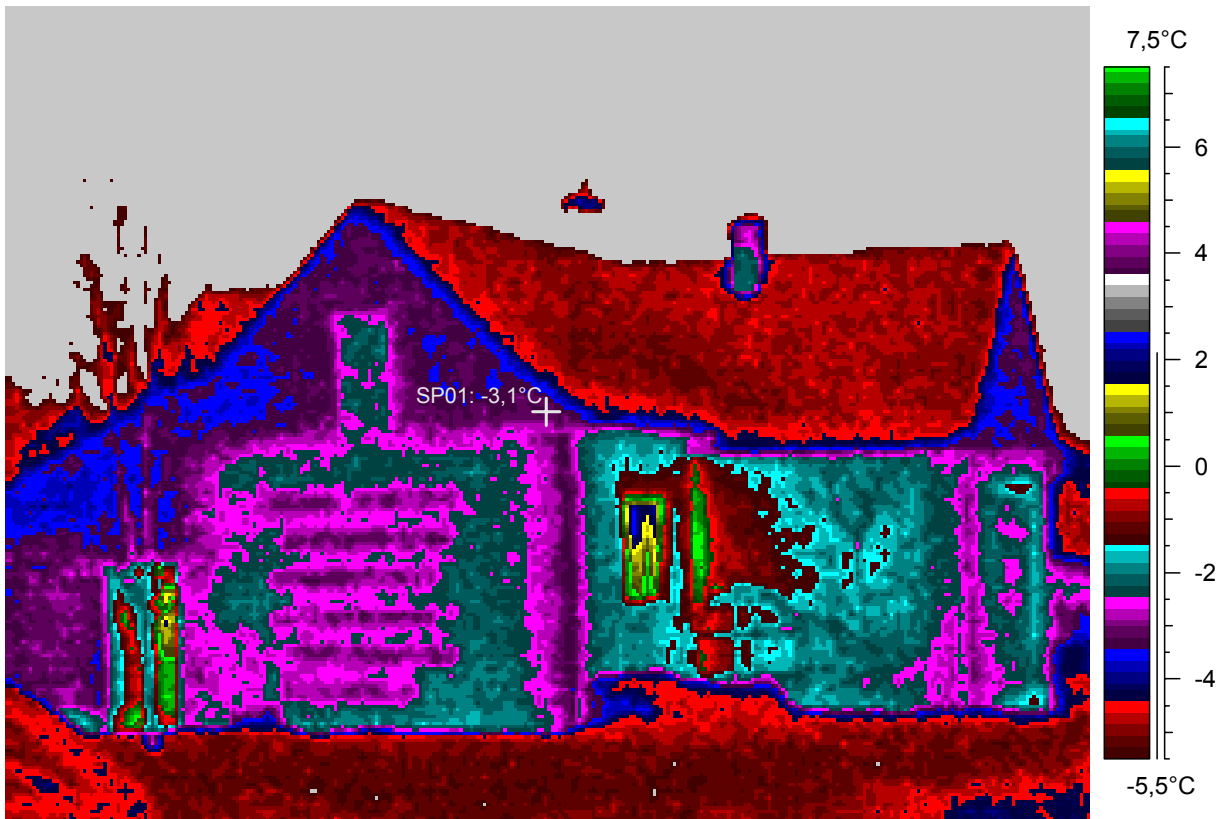
blabla

22 - Ir_1954.jpg

Label	Value
IR : max	2,6°C
IR : min	-8,6°C
SP01	-3,1°C

20.2.2005

0:11:55



comments:

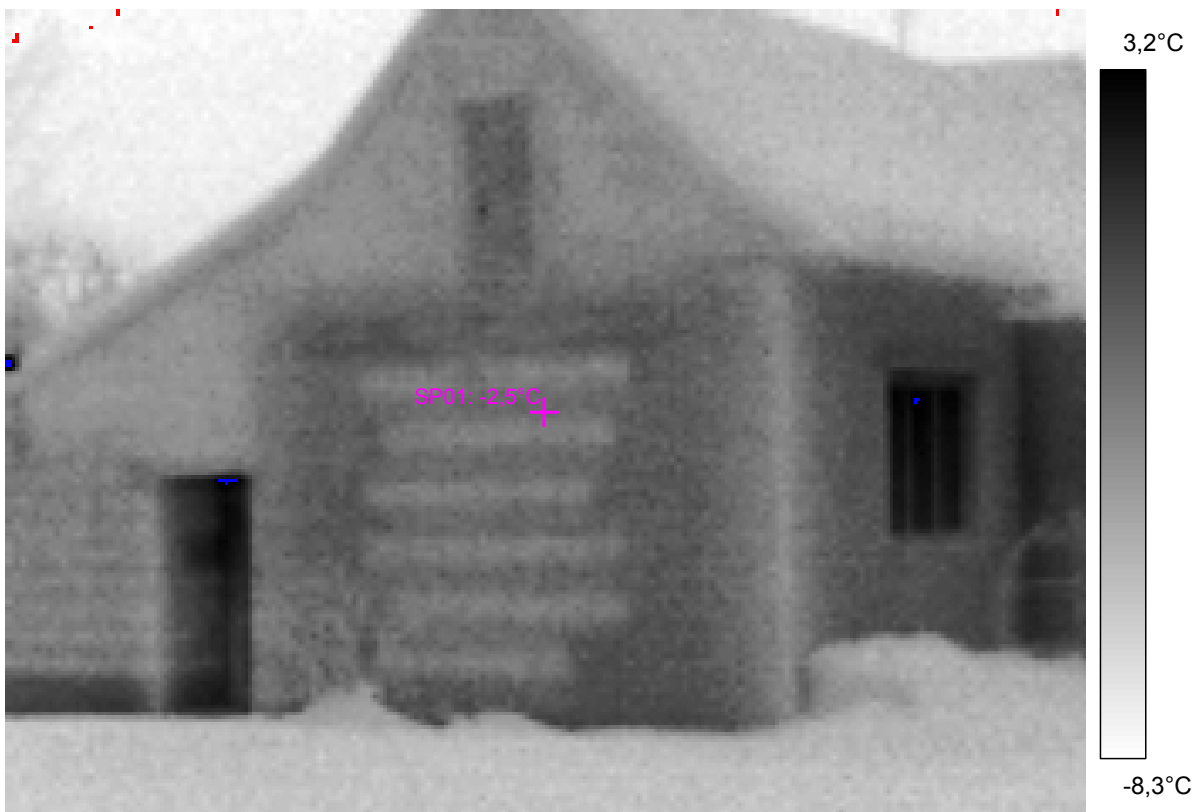
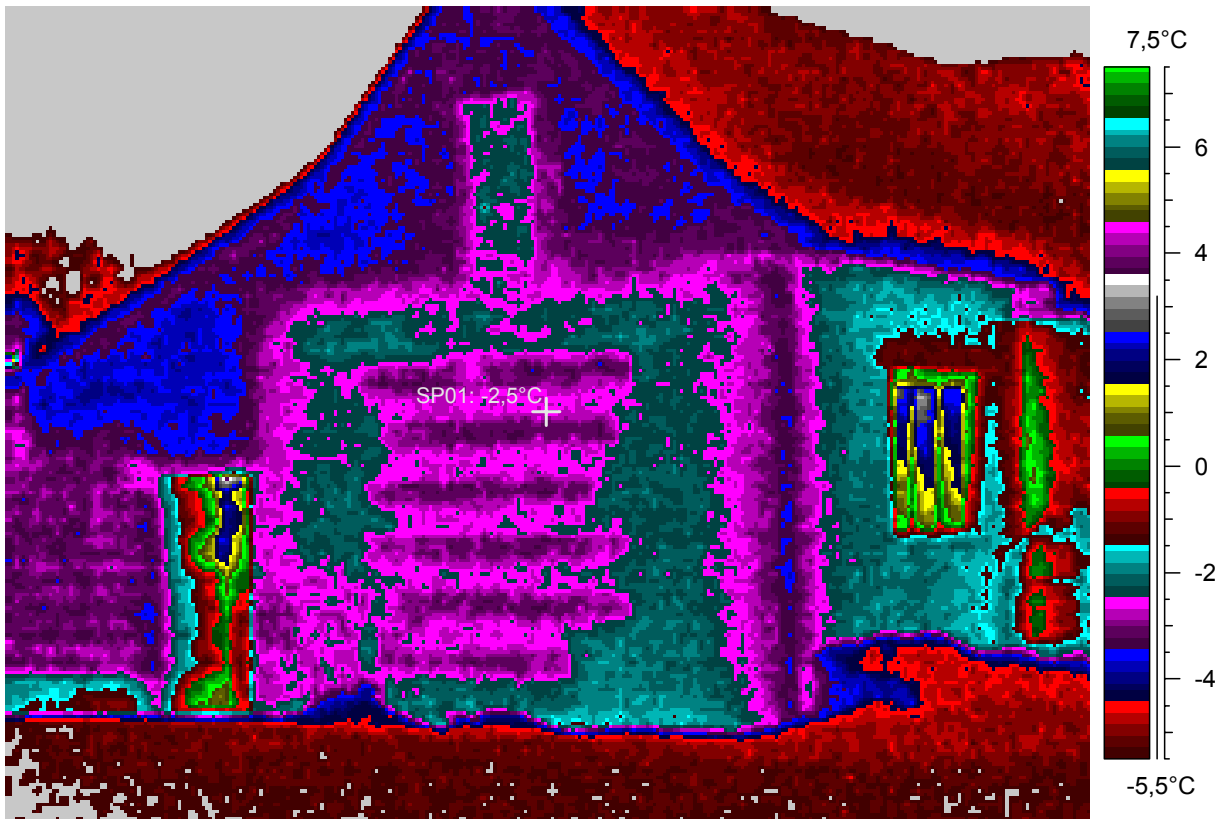
blabla

23 - Ir_1955.jpg

Label	Value
IR : max	6,6°C
IR : min	-8,5°C
SP01	-2,5°C

20.2.2005

0:13:49



comments:

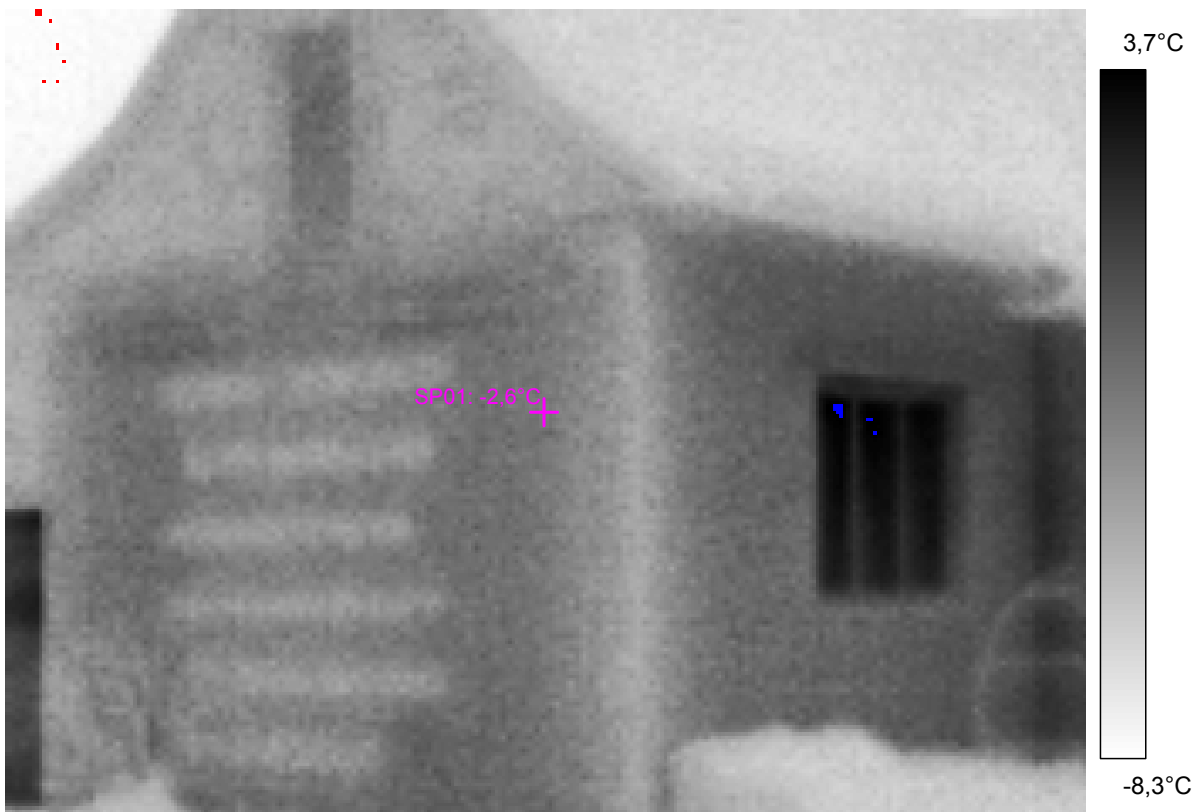
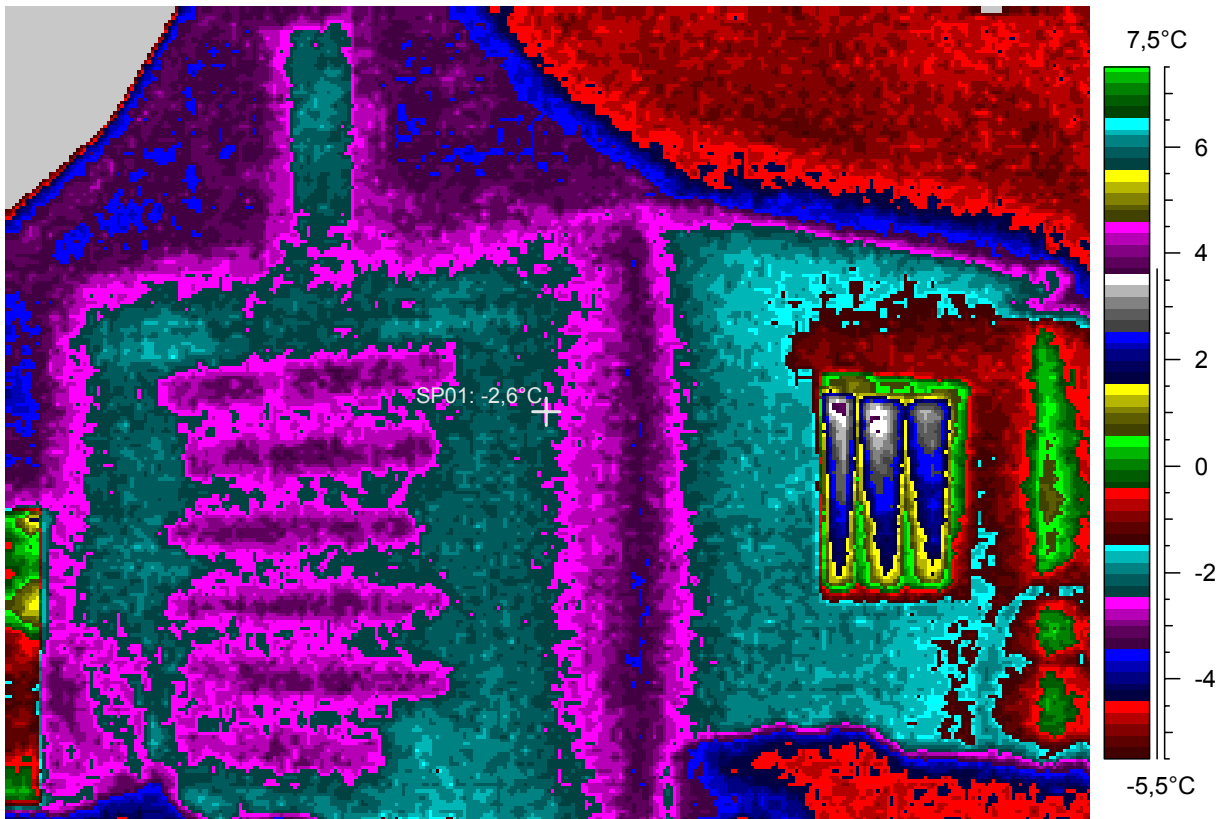
blabla

24 - Ir_1956.jpg

Label	Value
IR : max	3,9°C
IR : min	-8,5°C
SP01	-2,6°C

20.2.2005

0:15:54



comments:

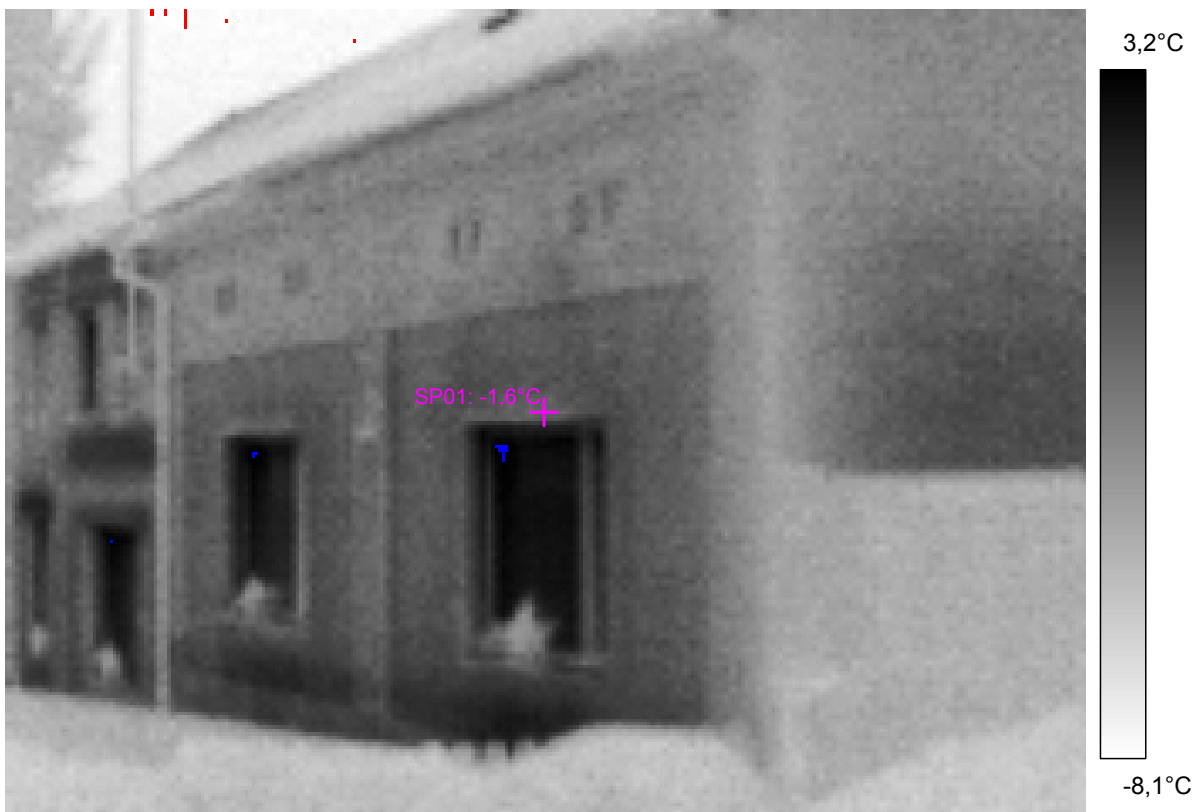
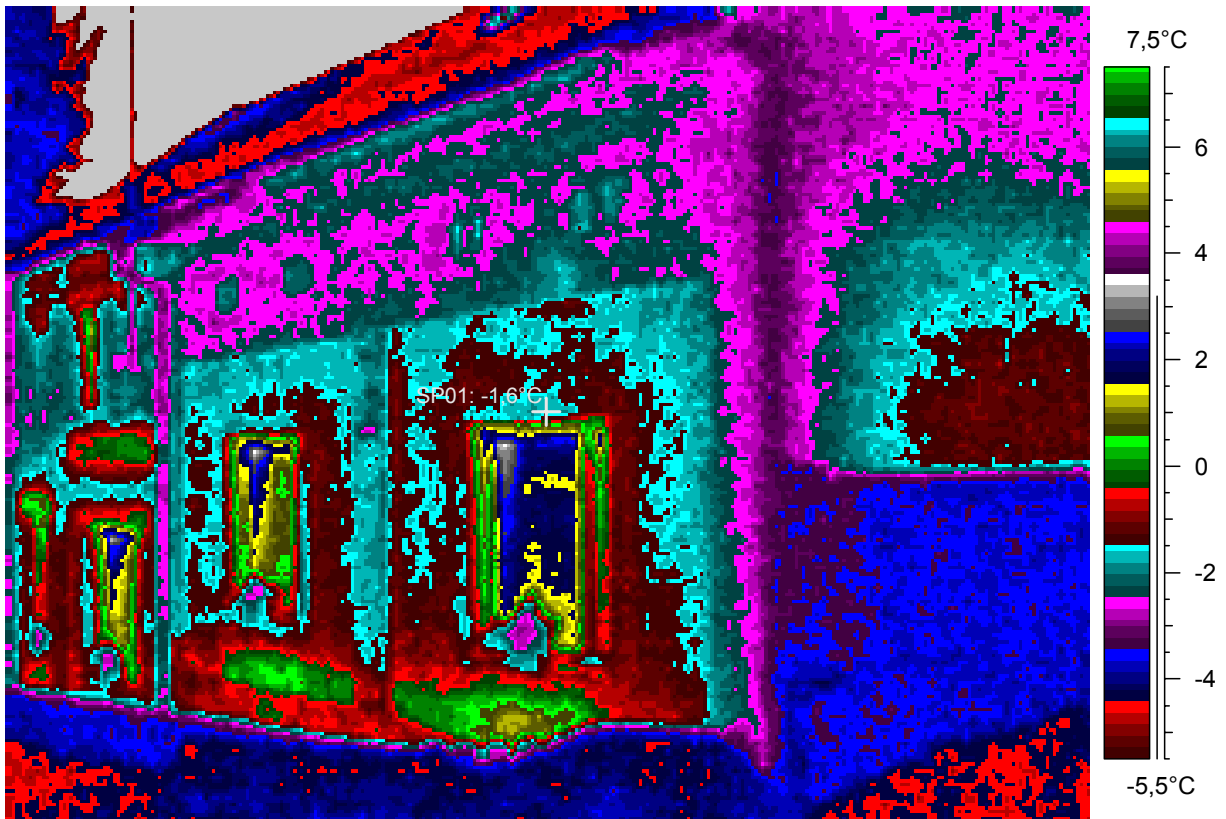
blabla

25 - Ir_1957.jpg

Label	Value
IR : max	3,6°C
IR : min	-8,2°C
SP01	-1,6°C

20.2.2005

0:16:40



comments:

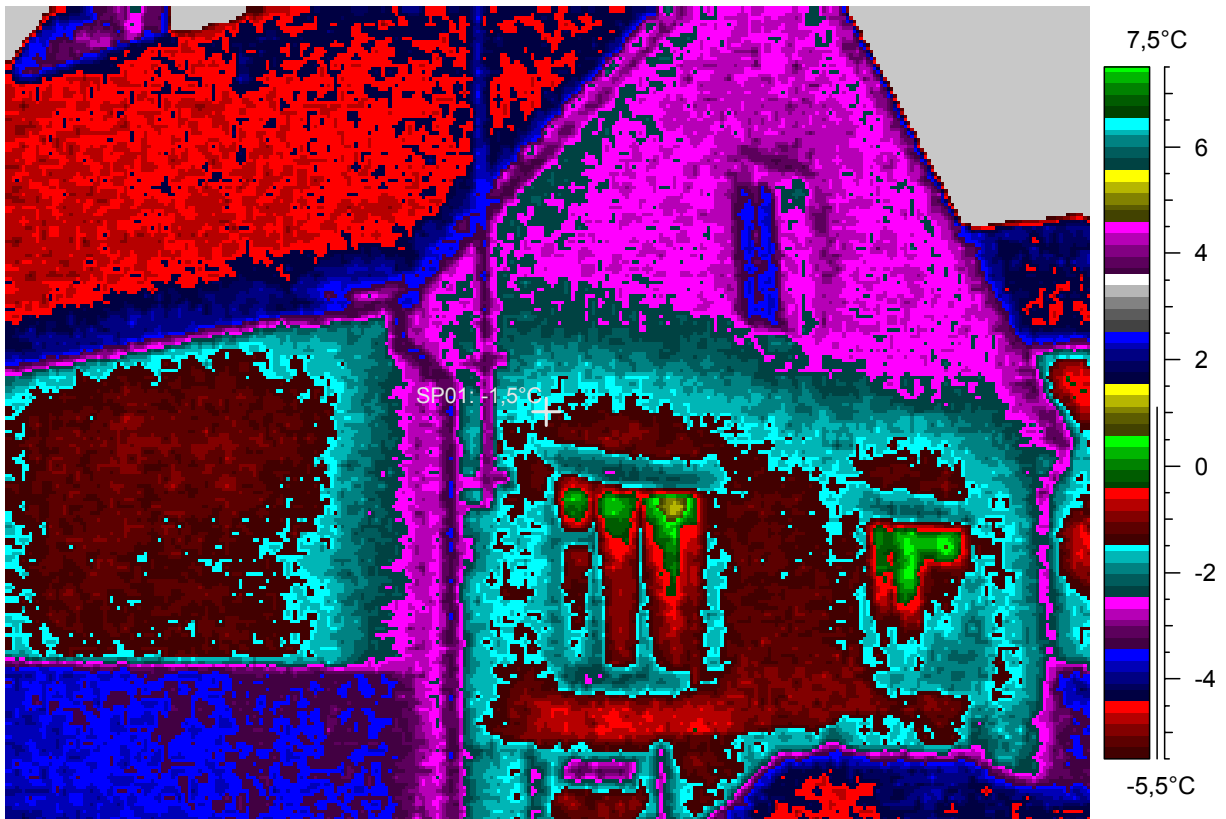
blabla

26 - Ir_1958.jpg

Label	Value
IR : max	1,3°C
IR : min	-9,0°C
SP01	-1,5°C

20.2.2005

0:18:34



comments:

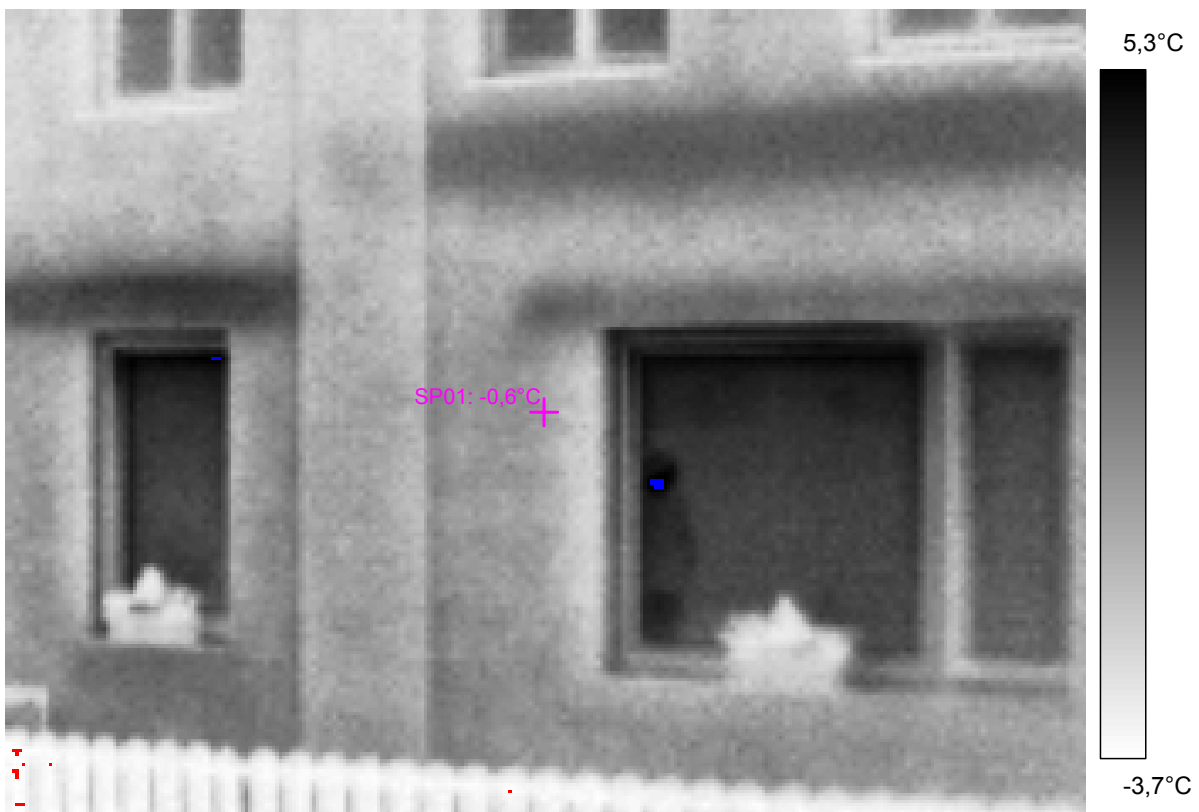
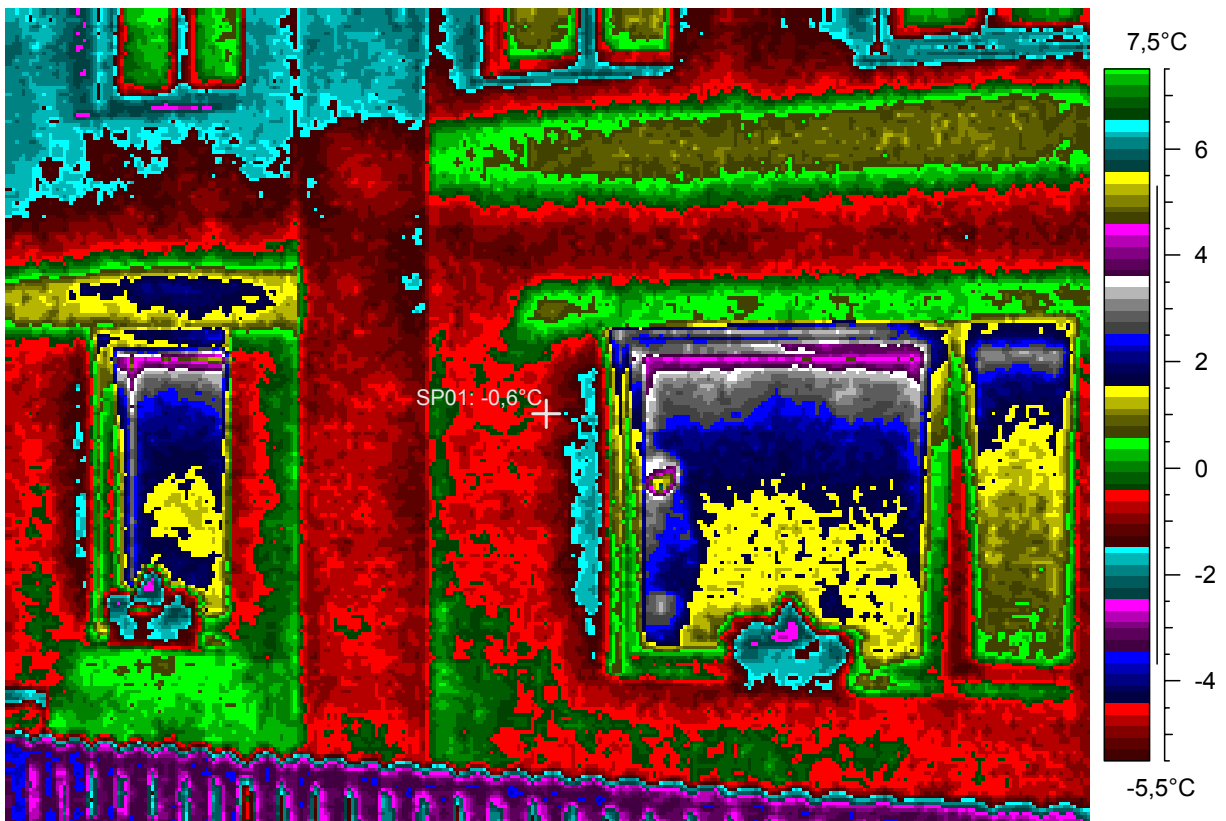
blabla

27 - Ir_1959.jpg

Label	Value
IR : max	5,9°C
IR : min	-3,8°C
SP01	-0,6°C

20.2.2005

0:19:41



comments:

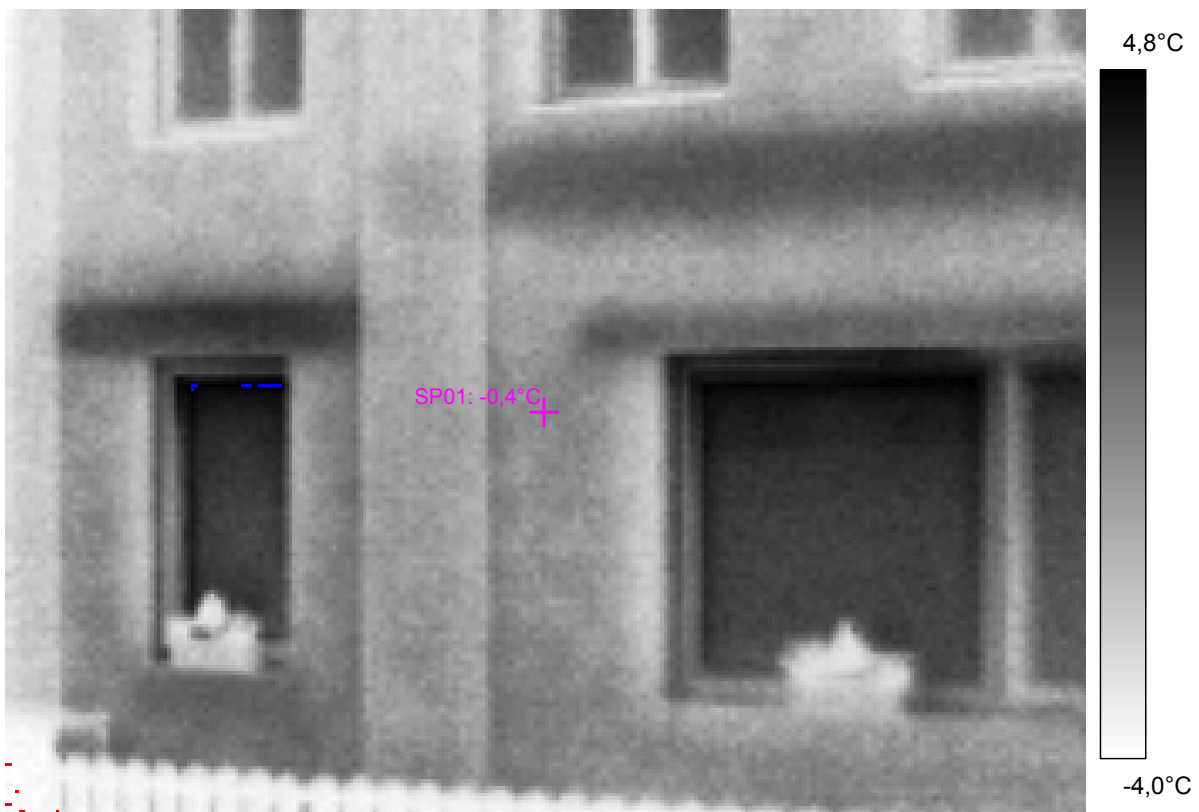
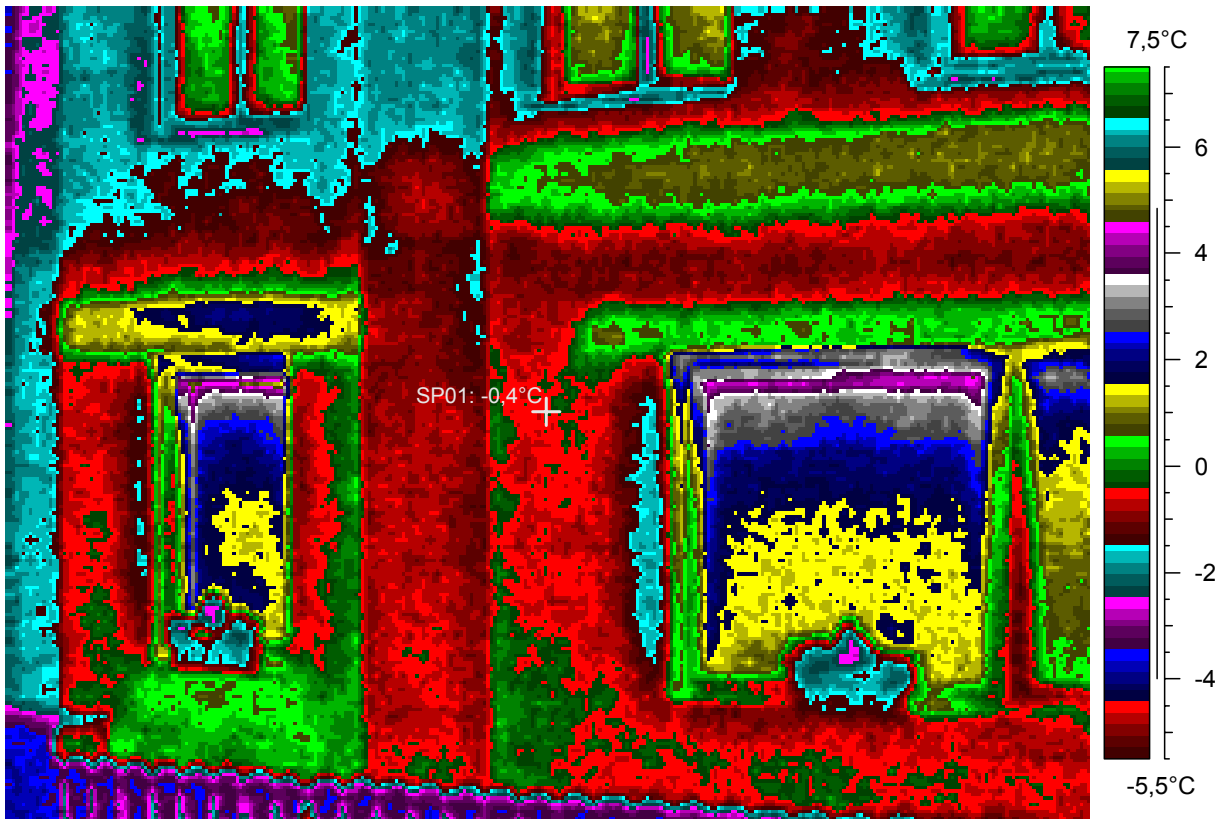
blabla

28 - Ir_1960.jpg

Label	Value
IR : max	5,4°C
IR : min	-4,1°C
SP01	-0,4°C

20.2.2005

0:19:54



comments:

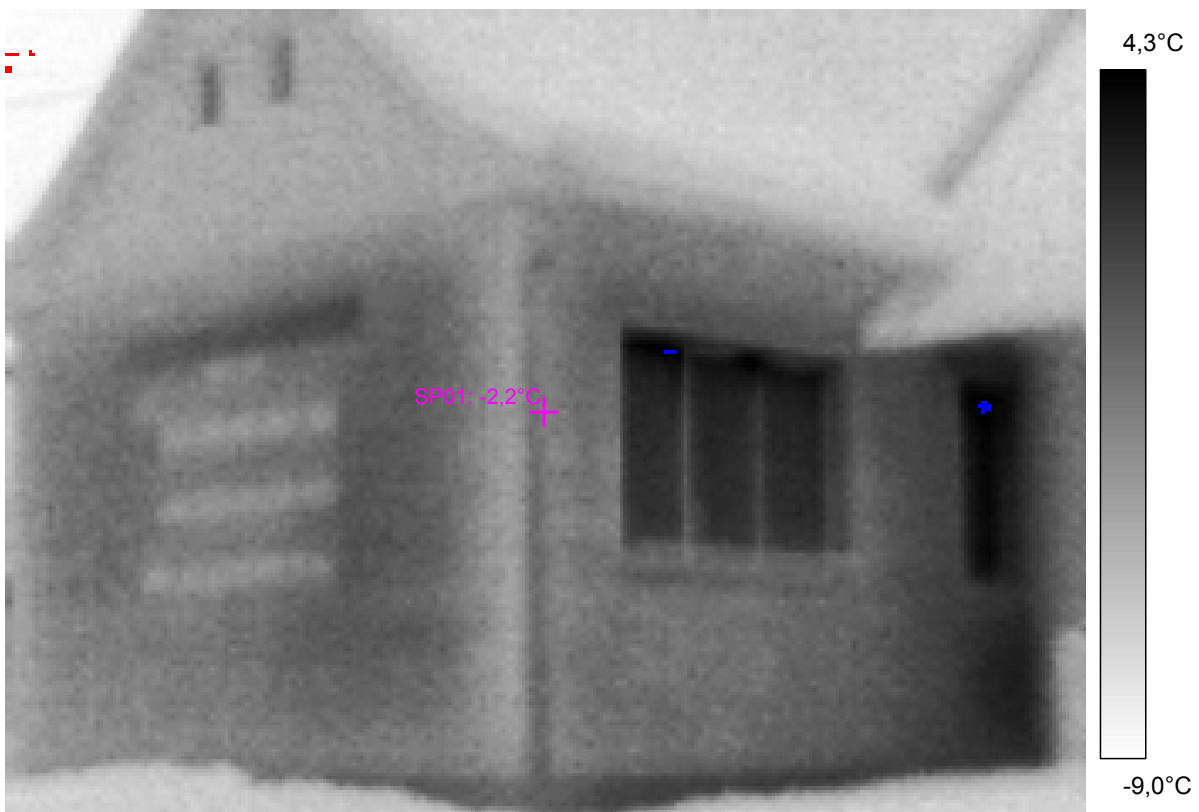
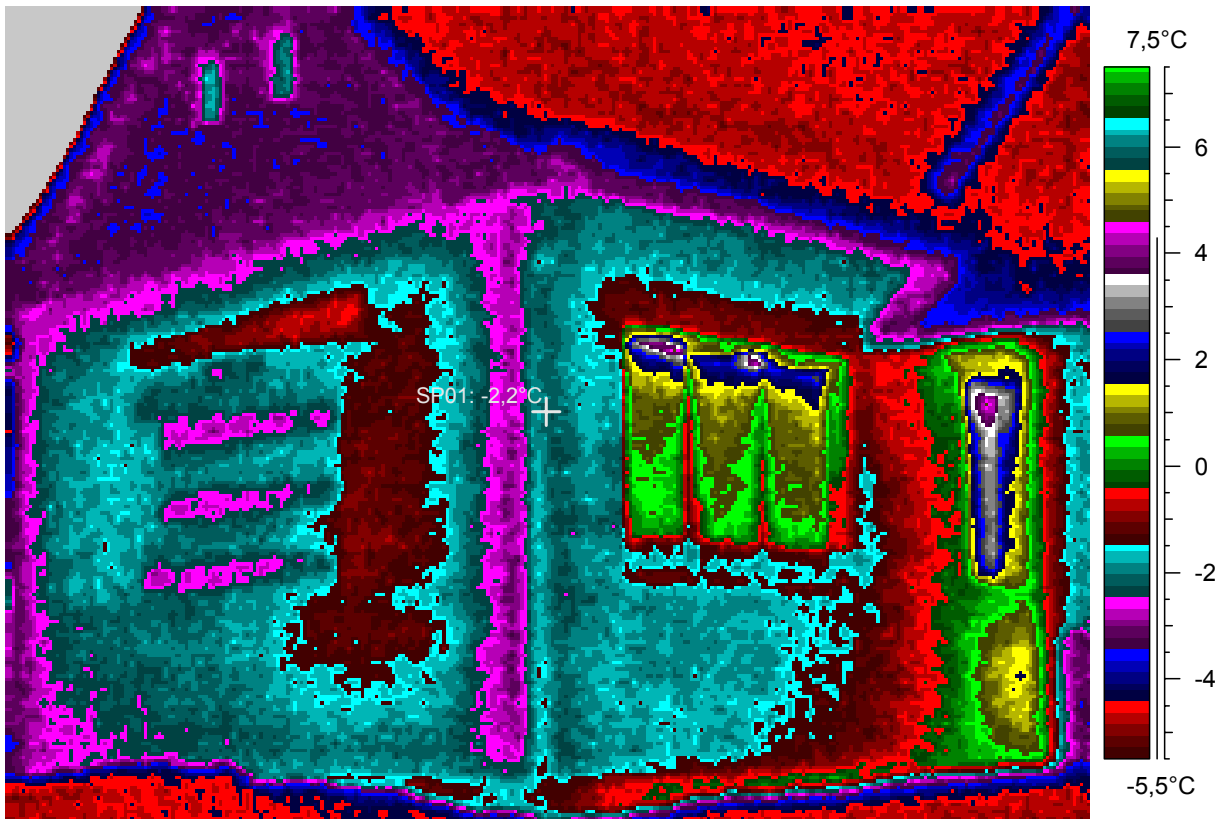
blabla

29 - Ir_1961.jpg

Label	Value
IR : max	4,8°C
IR : min	-9,4°C
SP01	-2,2°C

20.2.2005

0:22:05



comments:

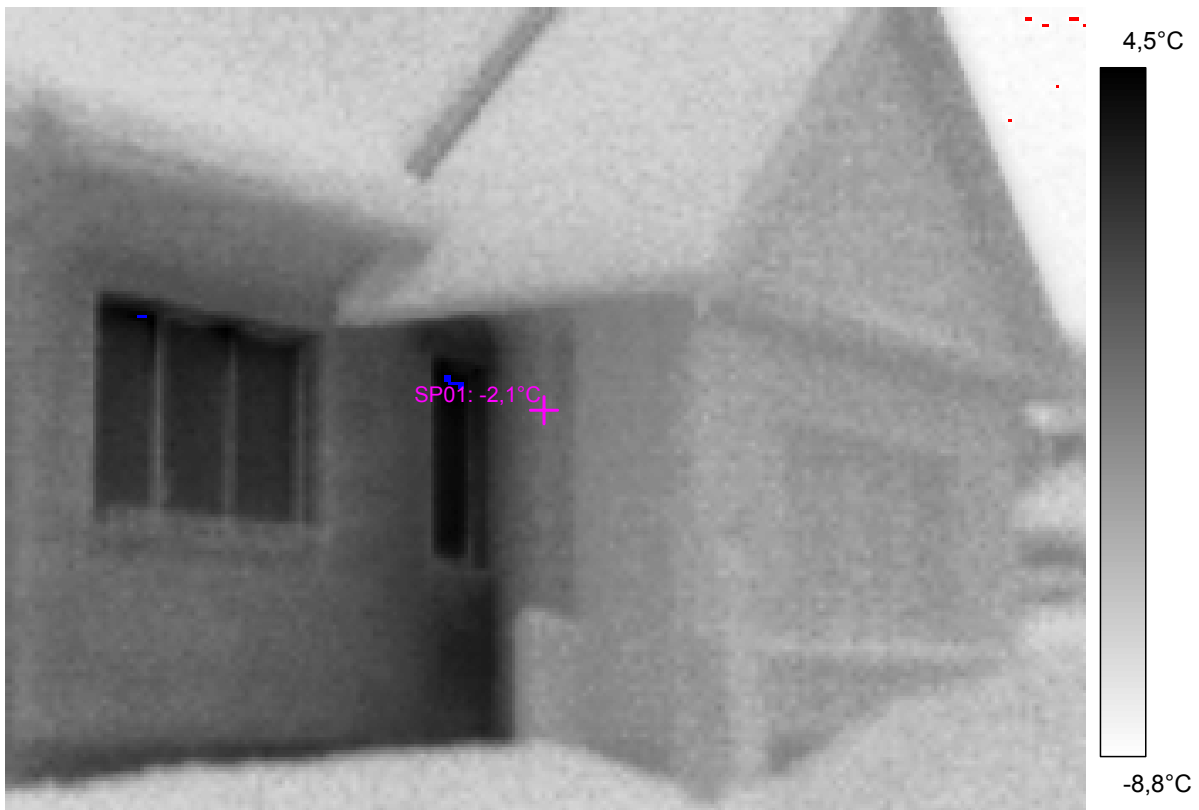
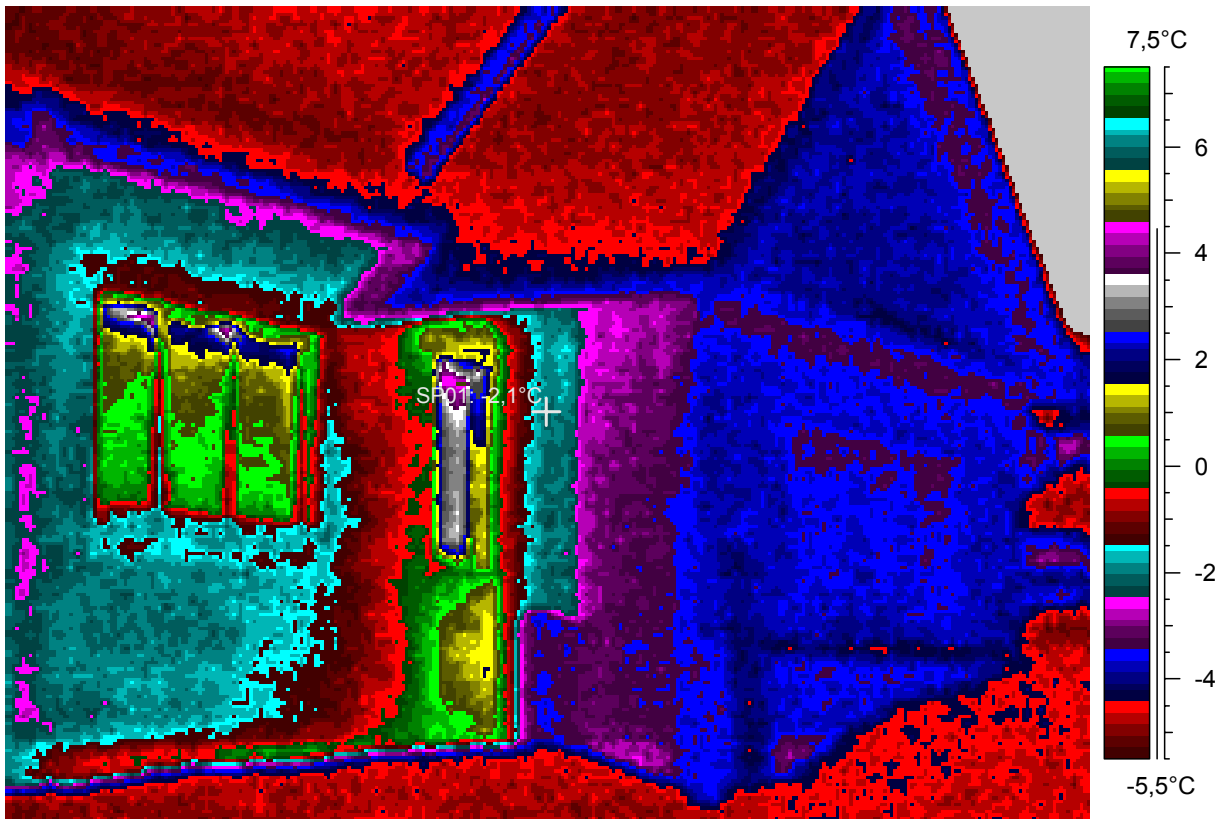
blabla

30 - Ir_1962.jpg

Label	Value
IR : max	4,8°C
IR : min	-9,0°C
SP01	-2,1°C

20.2.2005

0:23:03



comments:

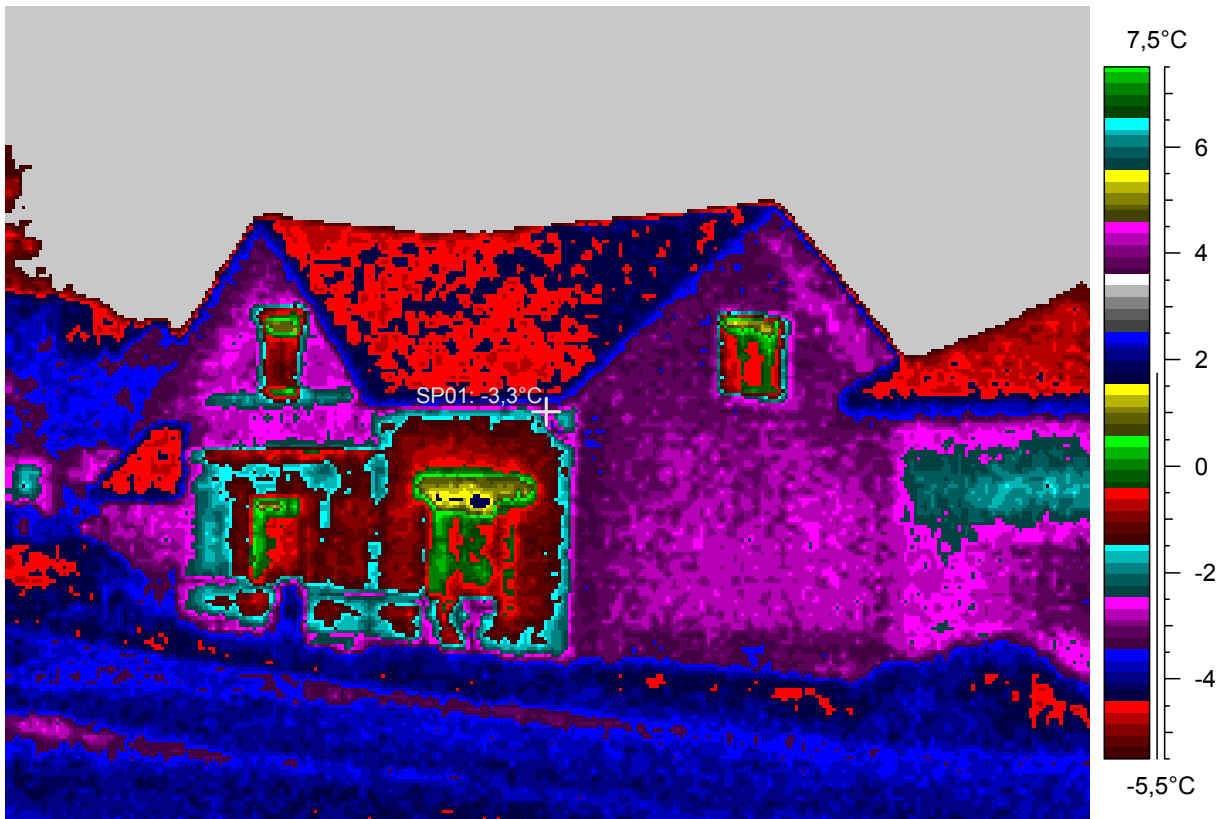
blabla

31 - Ir_1963.jpg

Label	Value
IR : max	1,9°C
IR : min	-8,5°C
SP01	-3,3°C

20.2.2005

0:24:24



comments:

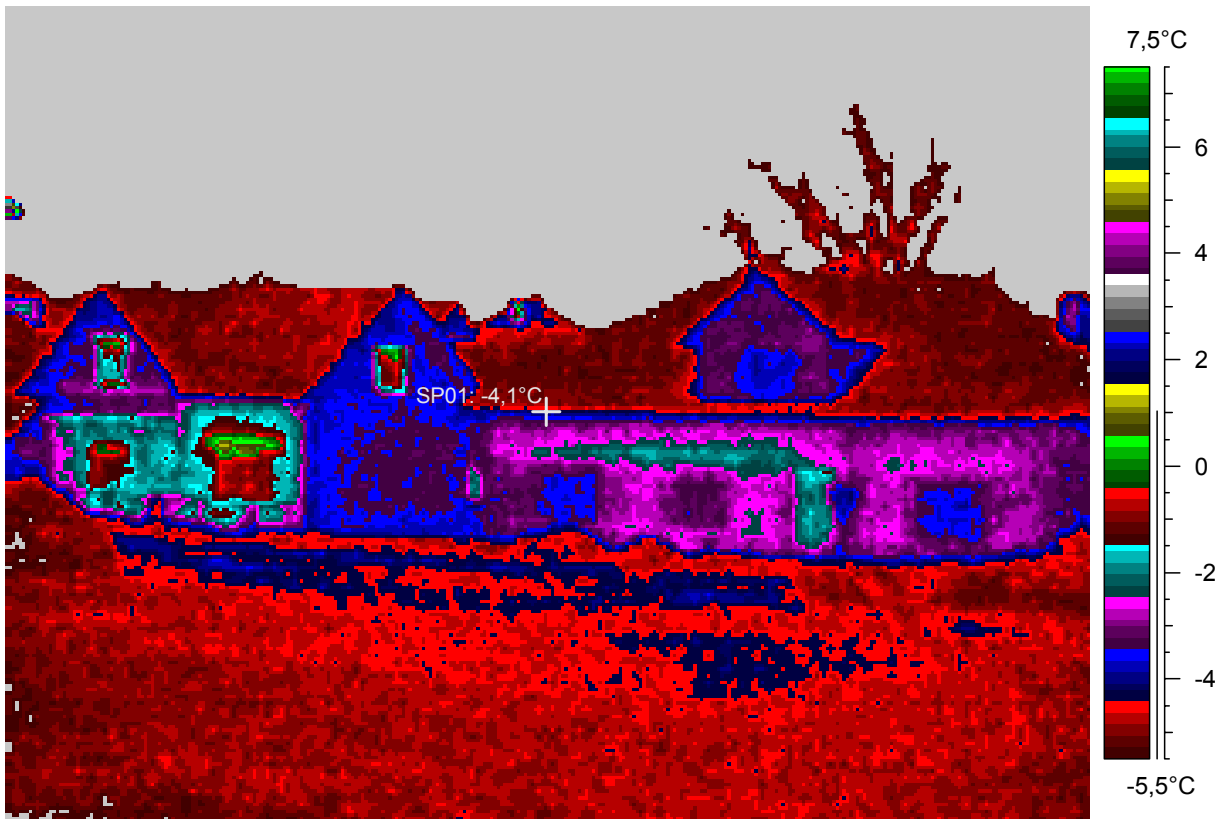
blabla

32 - Ir_1964.jpg

Label	Value
IR : max	7,6°C
IR : min	-8,9°C
SP01	-4,1°C

20.2.2005

0:27:07



comments:

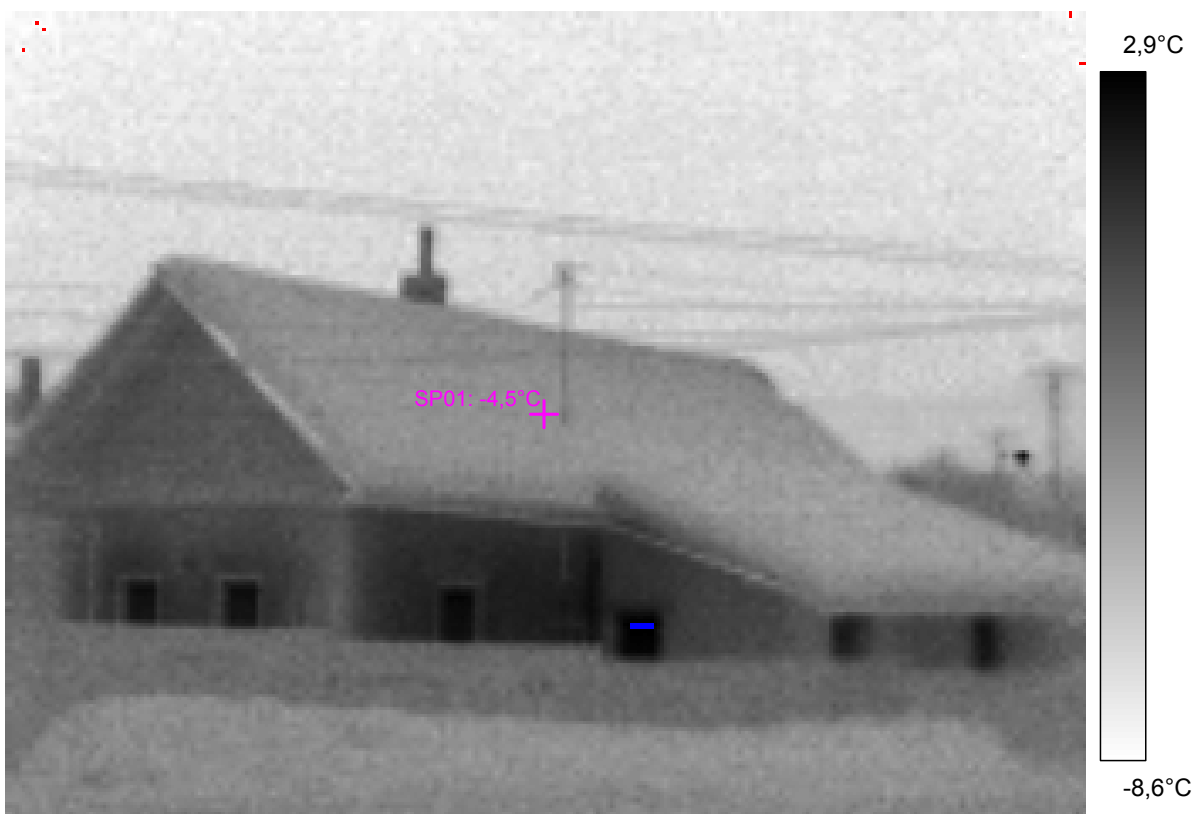
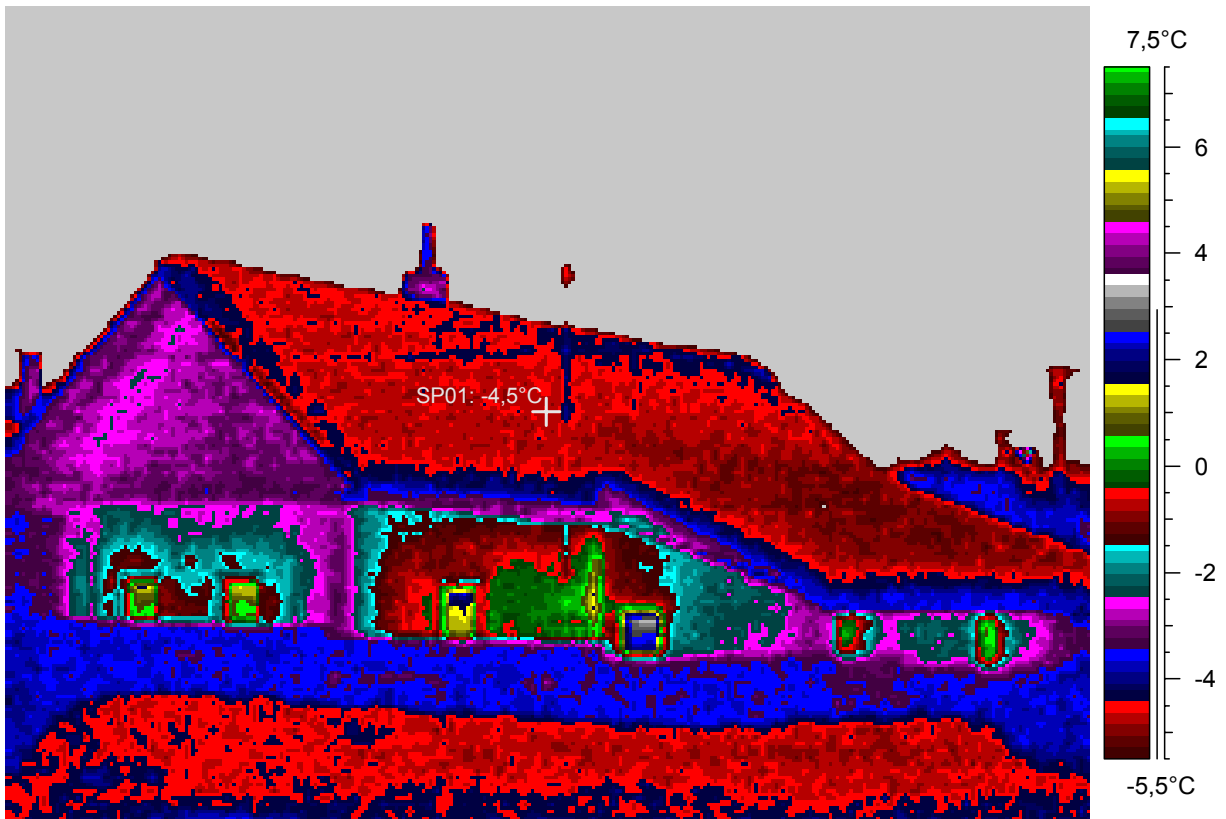
blabla

33 - Ir_1965.jpg

Label	Value
IR : max	3,3°C
IR : min	-8,8°C
SP01	-4,5°C

20.2.2005

0:28:46



comments:

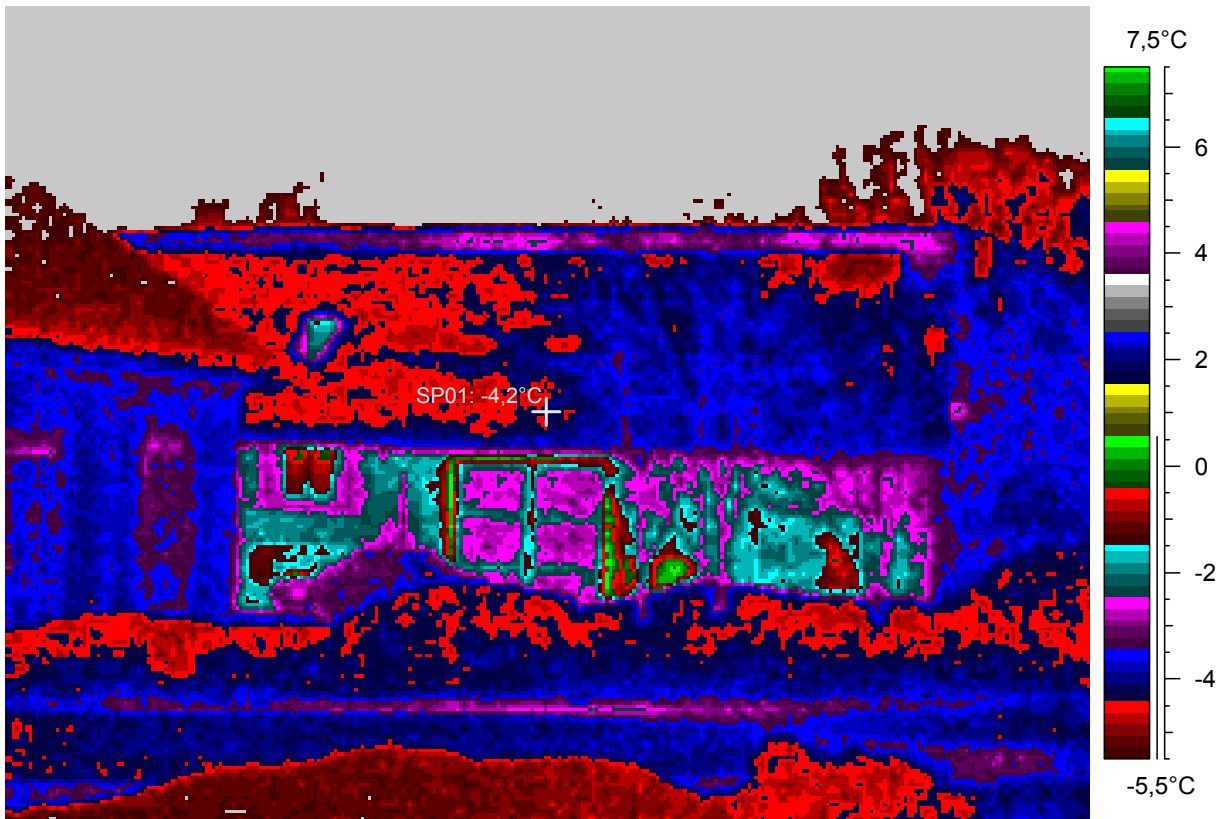
blabla

34 - Ir_1966.jpg

Label	Value
IR : max	0,7°C
IR : min	-8,6°C
SP01	-4,2°C

20.2.2005

0:30:36



comments:

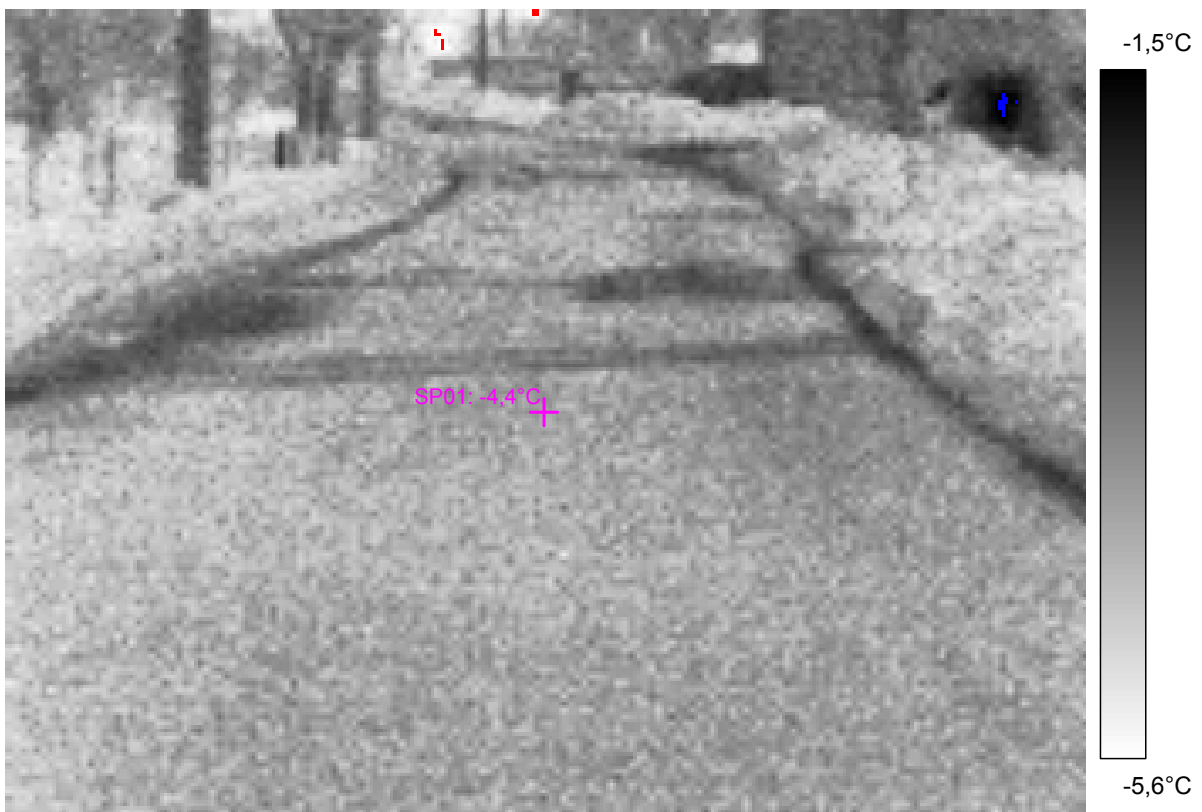
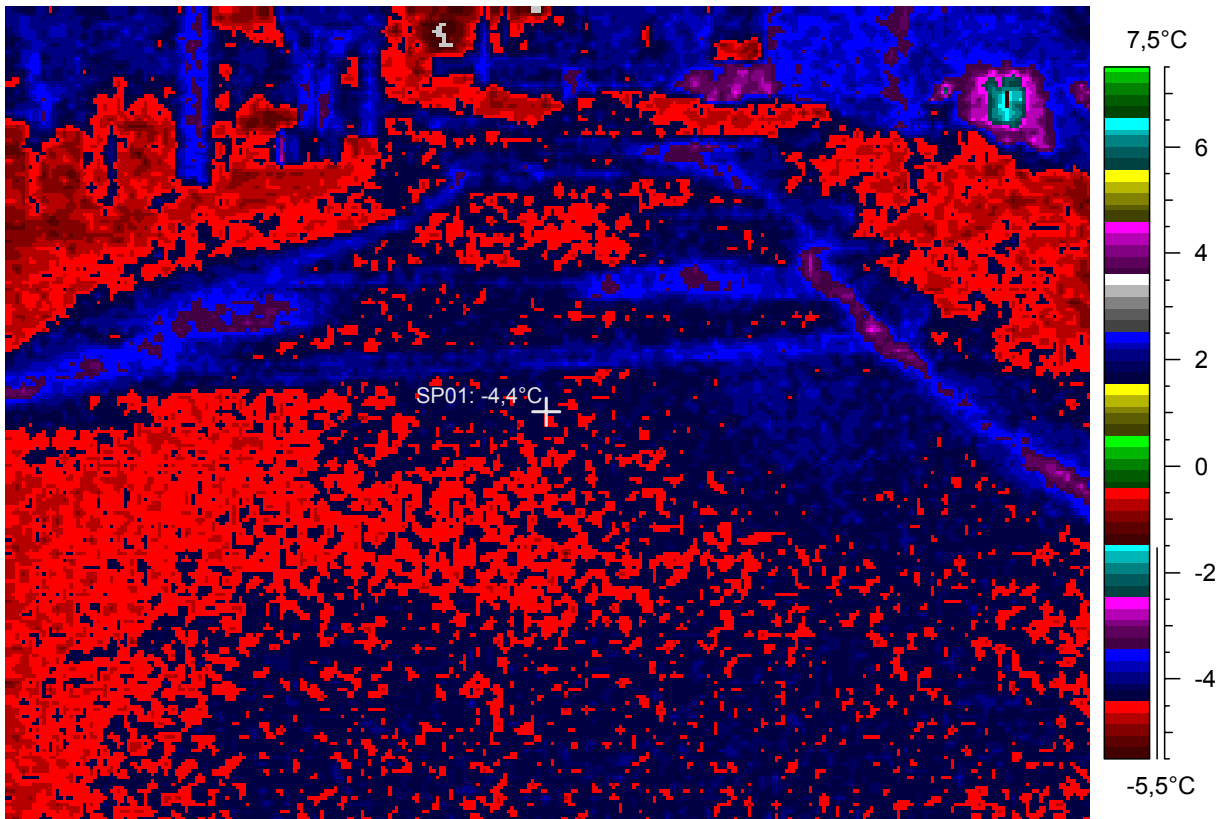
blabla

35 - Ir_1967.jpg

Label	Value
IR : max	-1,3°C
IR : min	-5,9°C
SP01	-4,4°C

20.2.2005

0:32:42



comments:

blabla

36 - Ir_1968.jpg

Label	Value
IR : max	4,0°C
IR : min	-9,8°C
SP01	-3,6°C

20.2.2005

0:34:57

