

[Jan Hollan](#), CzechGlobe a Veronica

Snímky byly exponovány 15. března 2020 od půl sedmé do sedmi hodin ráno kamerou Guide MobIR M8. Až na několik posledních záběrů šlo o neosluněné fasády, po mrazivé noci. Nebe bylo bezoblačné, což se na snímcích projevuje. V měřeném spektrálním okně sálá tak málo, že je to mimo rozsah kamerou udávaných teplot, a odrazy oblohy na sklech či kapotách aut, ale i odrazy od na pohled nelesklých ploch, jako jsou střešní krytiny, vedou k údajům, které jsou mnohem nižší než skutečné teploty takových předmětů.

Termosnímky byly pro kvantitativní přehled uloženy všechny ve stejné barevné škále, znázorňující rozmezí jasových (aneb černých) teplot od $-15,0\text{ }^{\circ}\text{C}$ do $8,6\text{ }^{\circ}\text{C}$ (jasové teploty se týkají zejména vlnových délek od $8\text{ }\mu\text{m}$ do $13\text{ }\mu\text{m}$). Střed rozmezí pro každou barvu je na sudém stupni Celsiovy stupnice, hrany mezi barvami jsou na lichém stupni, jasy v rámci každé barvy člení teploty po půl Celsiově stupni čili půlkelvinu.

Pro dobrou orientaci v tom, co snímky zachycují, jsou uloženy také ve škále šedé, s rozmezím zahrnujícím zpravidla už i předměty, které nejsou vyhřívány, a končícím tak, aby jen nejteplejší „body“ budov byly nad tímto rozmezím. Volba rozmezí byla manuální, s ohledem na scénu na snímku zachycenou. Jasové teploty nad zvoleným rozmezím jsou zobrazeny červeně, pod rozmezím modře.

U šedě škálovaného snímku je vlevo uvedeno také číslo a plné rozmezí jasových teplot zaznamenané kamerou, od maximální po minimální.

Tepelné toky skrze obálku budovy jsou úměrné teplotnímu rozdílu mezi daným povrchem budovy a srovnávacím povrchem, který je v tepelné rovnováze s okolím a není z opačné strany vyhříváný.
U svislých ploch byla teplota nevyhříváných svislých předmětů mínus pět až mínus šest stupňů Celsia, jak je z některých snímků patrné.

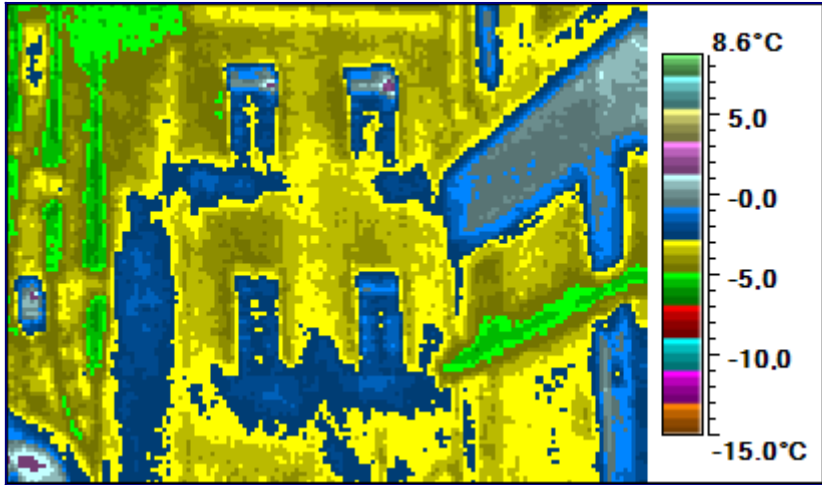
Absolutní hodnoty jasových teplot mohou mít chybu až jeden kelvin, ale rozdíly jasových teplot různých částí téhož snímku nemají chyby přes čtvrt kelvinu, zpravidla jsou chyby, čili odchylky údajů od skutečnosti třikrát menší, díky tomu, že před pořízením snímku byla kamera většinou interně kalibrována.

Zobrazené snímky byly z původních souborů s označením „JPG“ s dlouhými názvy přečíslovány skriptem v jazyce bash a pak uloženy do uvedených tří bitmap firemním softwarem. Pak byly na linuxovém počítači převedeny z formátu *.bmp na úsporný bezstrátový formát *.png a světelné snímky opatřeny rámečkem znázorňujícím výřez, který zabírá termokamera. Spolu s textovým souborem, v do nějž byly zapsány rozsahy jasových teplot snímků byly dalším skriptem v jazyce bash seřazeny do souboru *.html a ten pak otevřen v OpenOffice, opatřen úvodem a uložen jako pdf.

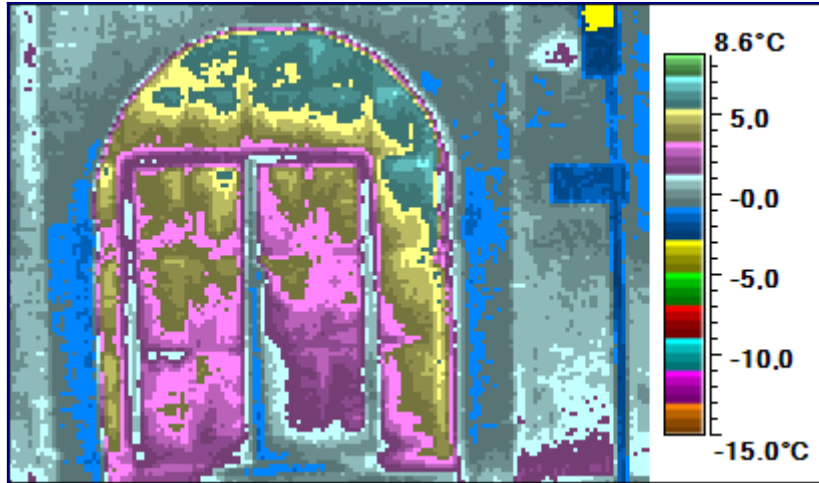
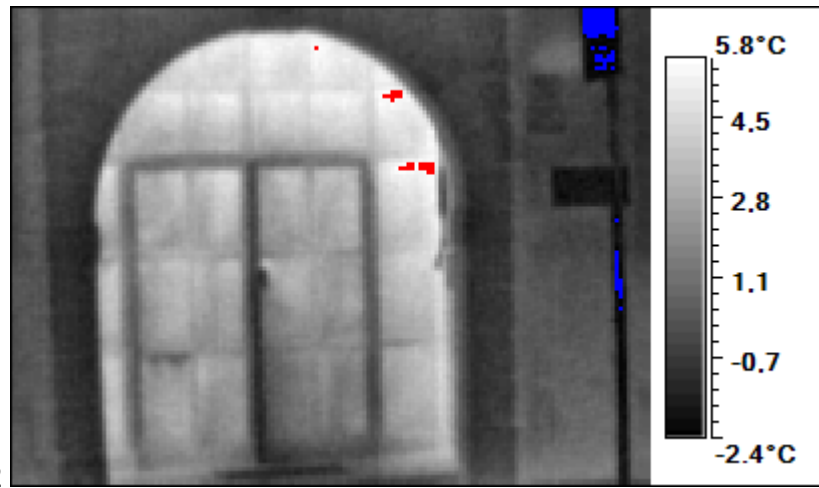
Interpretace takto souhrnně předložených snímků je na uživatelích. Tento soubor a všechna data a sw jsou dostupná na adrese <http://amper.ped.muni.cz/LW-infrared/KIC> od 1. března 2021.

K interpretaci lze poradit alespoň to, že bylo téměř bezvětrí, a že tedy rozdíl teplot (budova - srovnávací plocha) násobený nějakými $12\text{ W/m}^2\text{K}$ dává odhad tepelného toku danou částí pláště budovy. Více viz disertace autora, http://amper.ped.muni.cz/pasiv/windows/JH_disertace/.

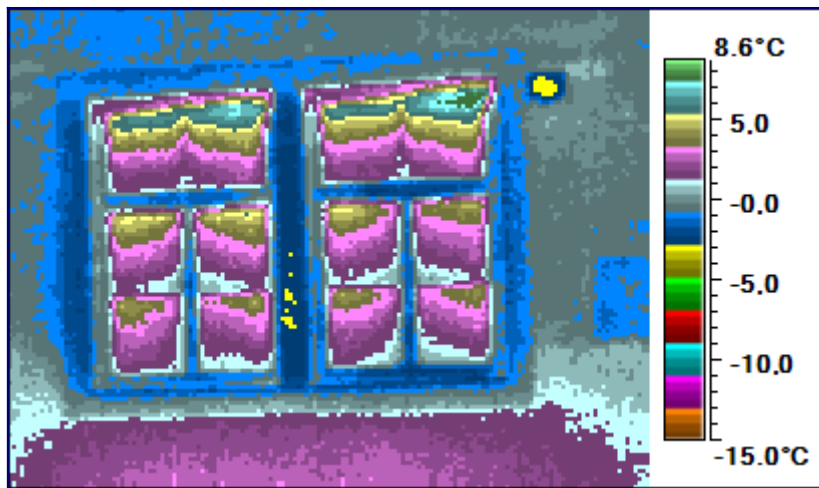
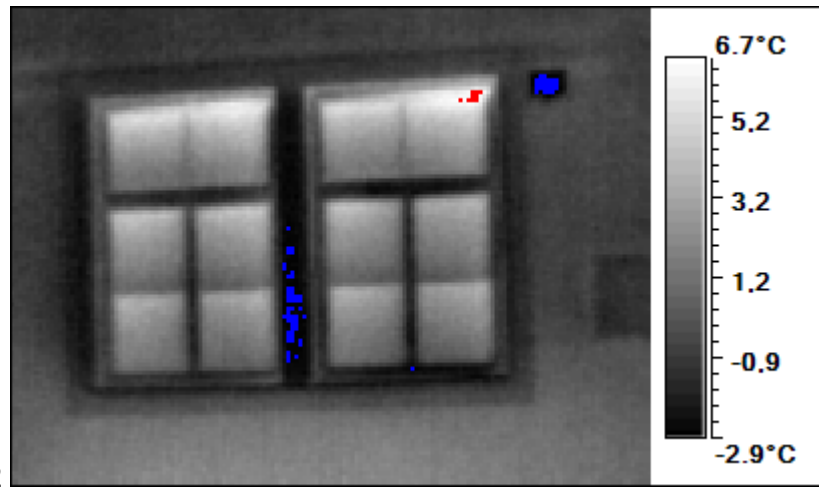
05 -6.1 1.9



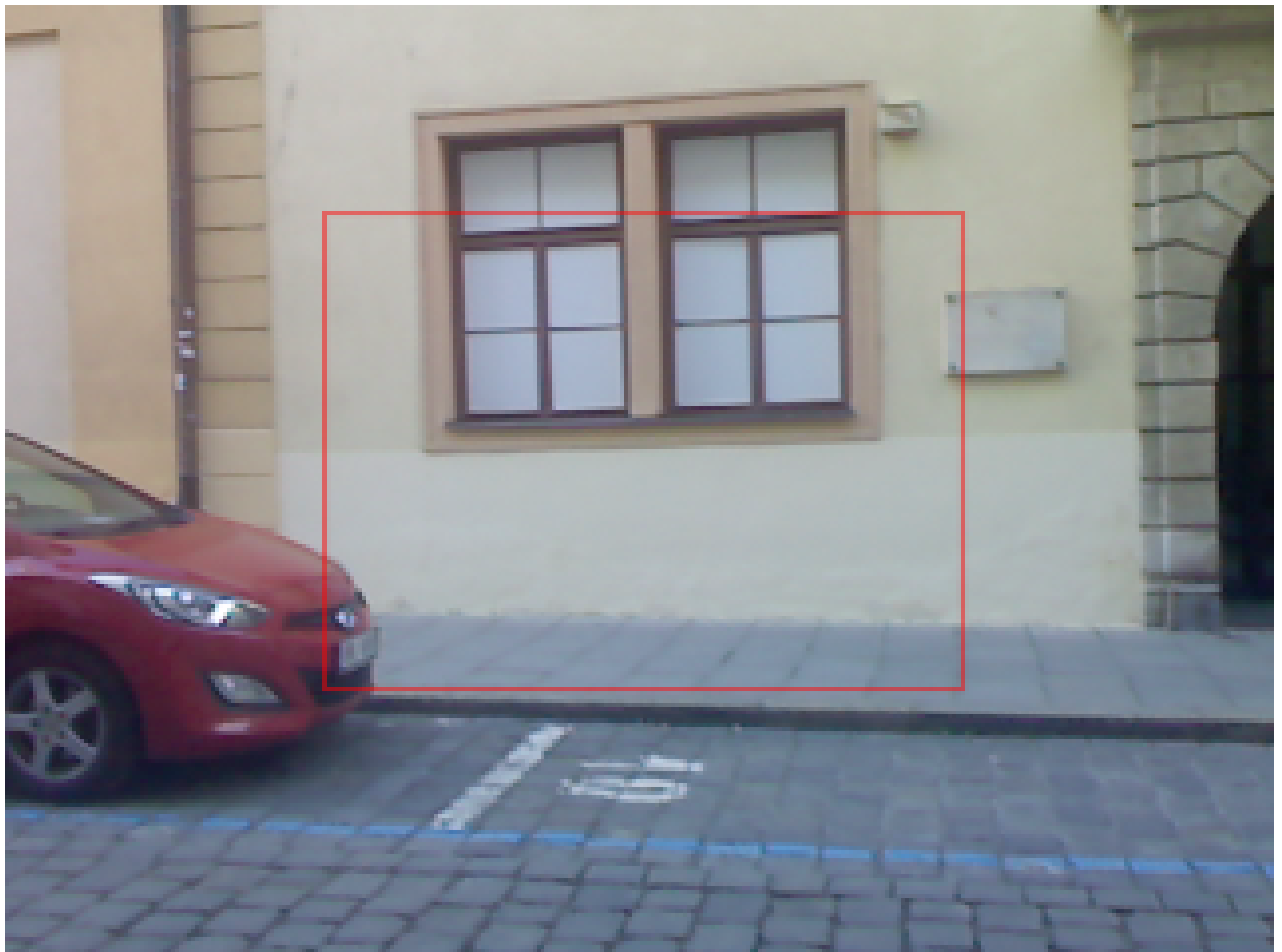
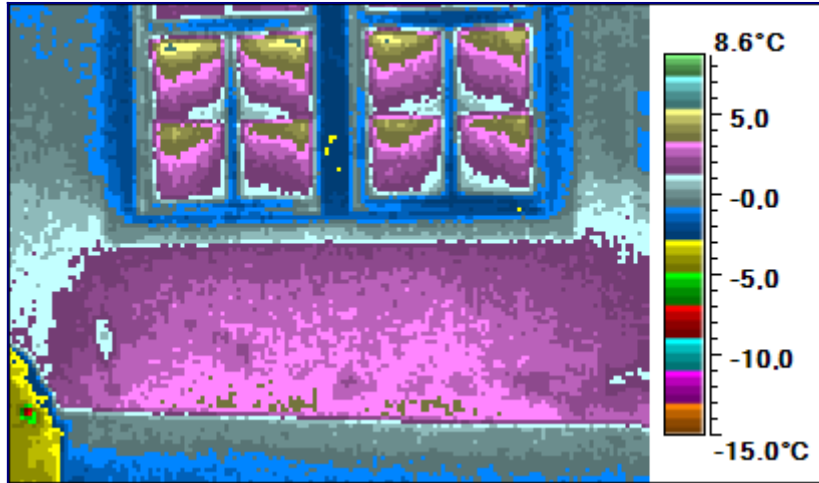
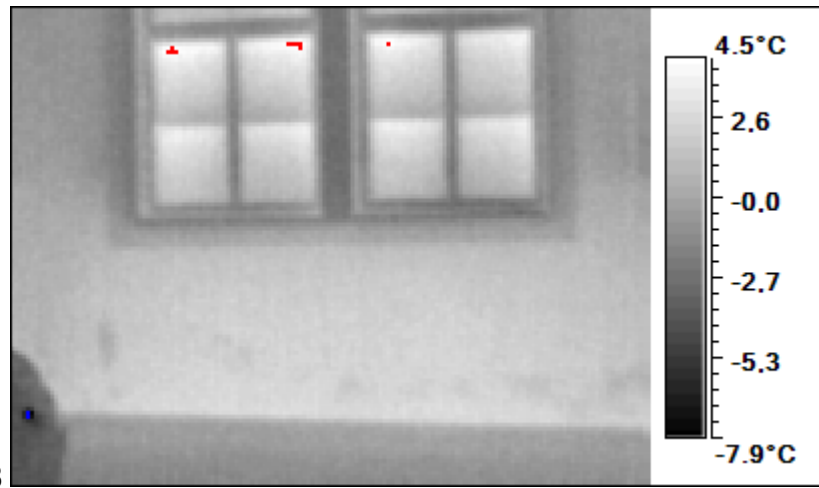
06 -3.3 6.2



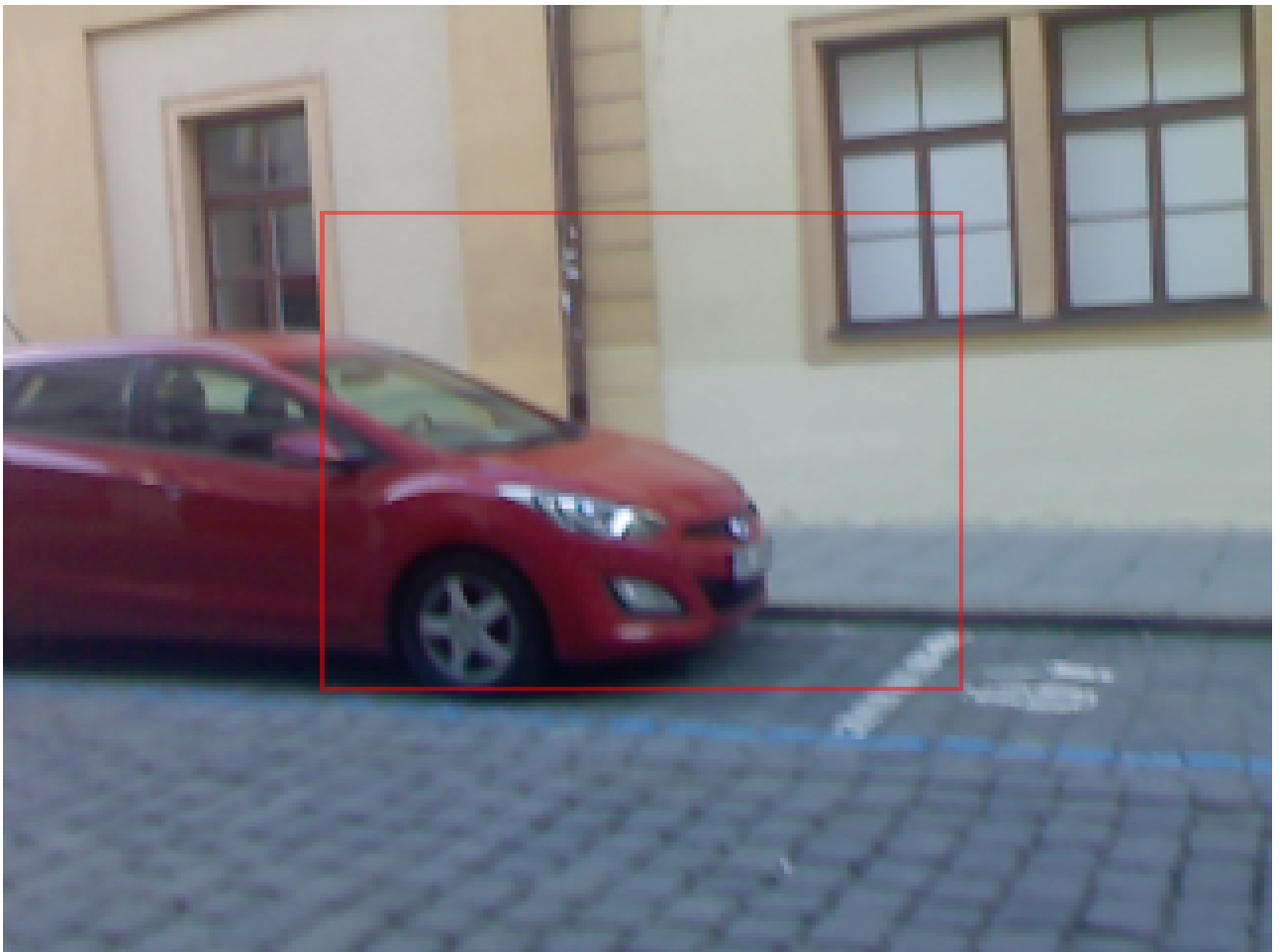
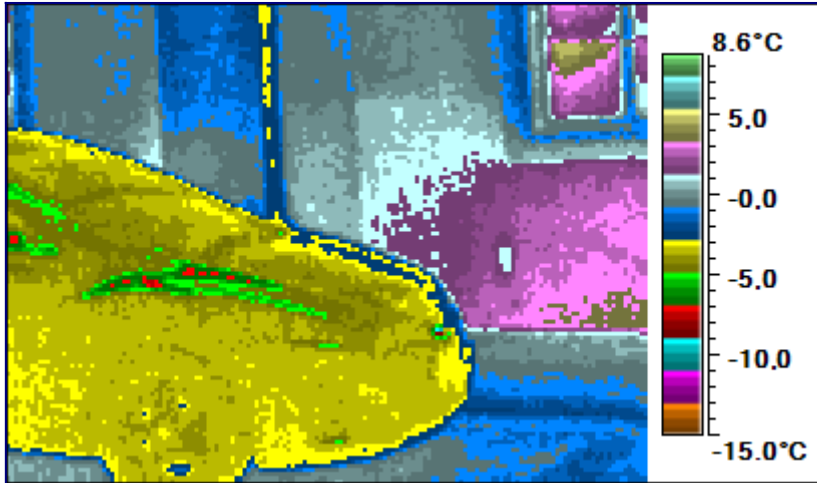
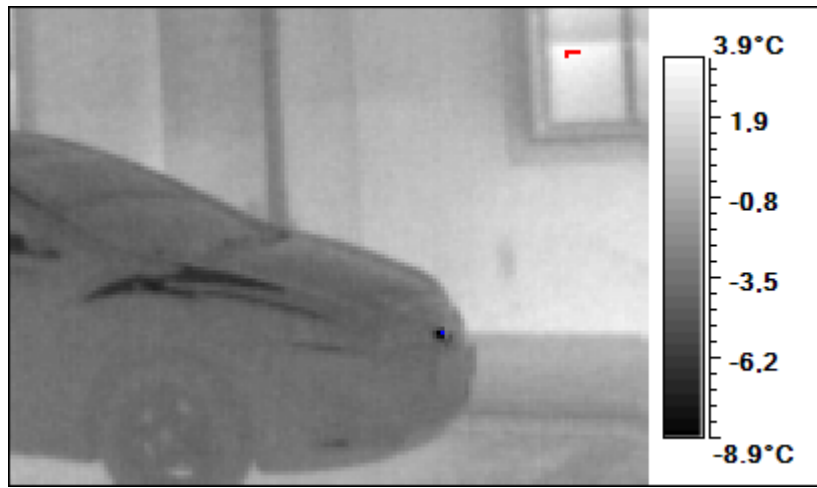
07 -3.3 7.2



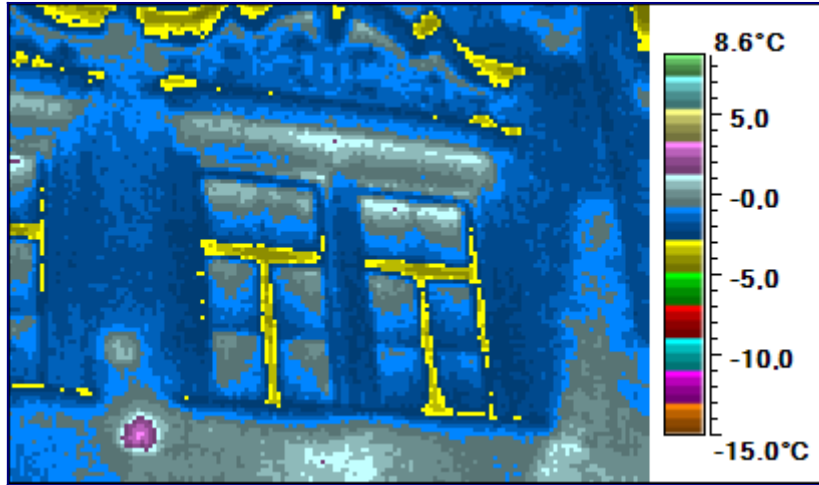
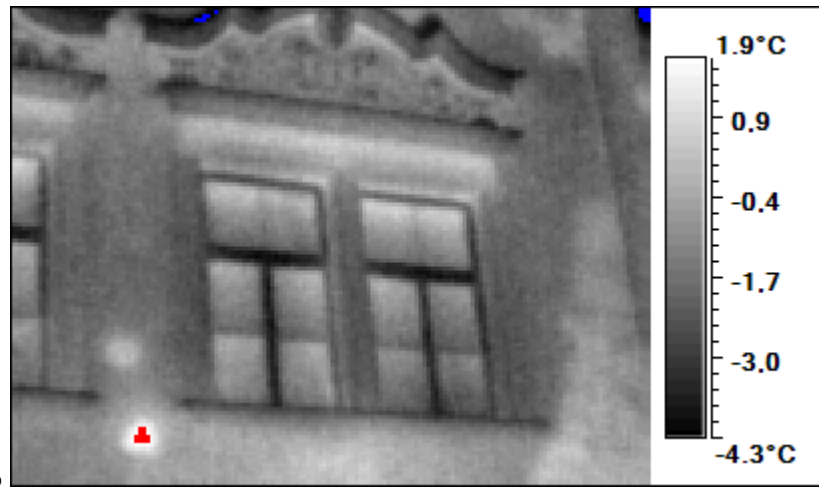
08 -8.5 4.8



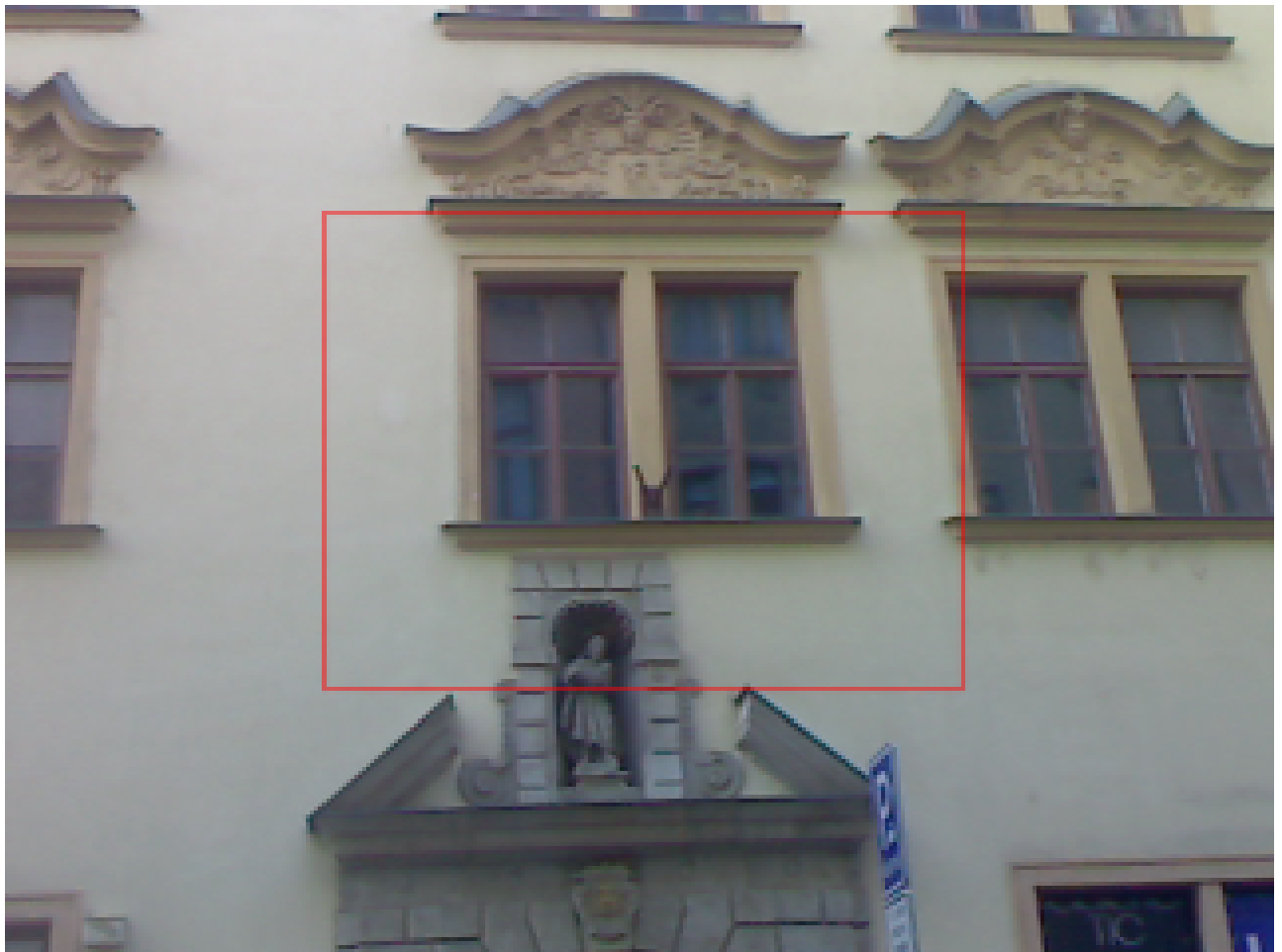
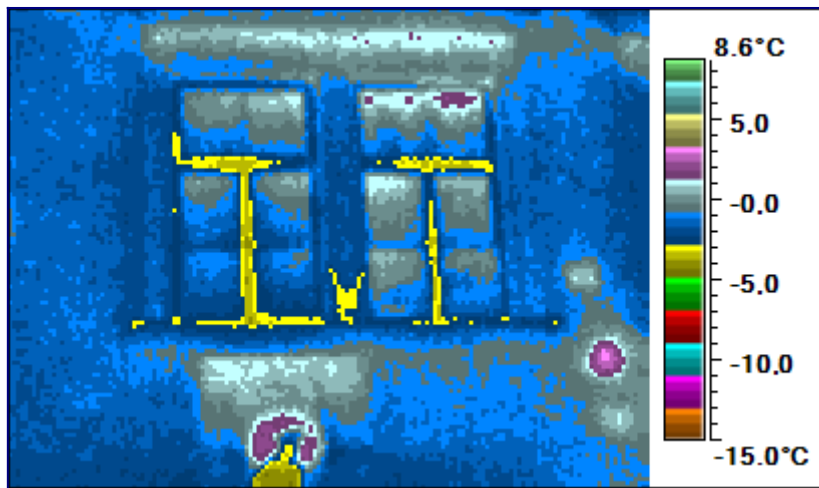
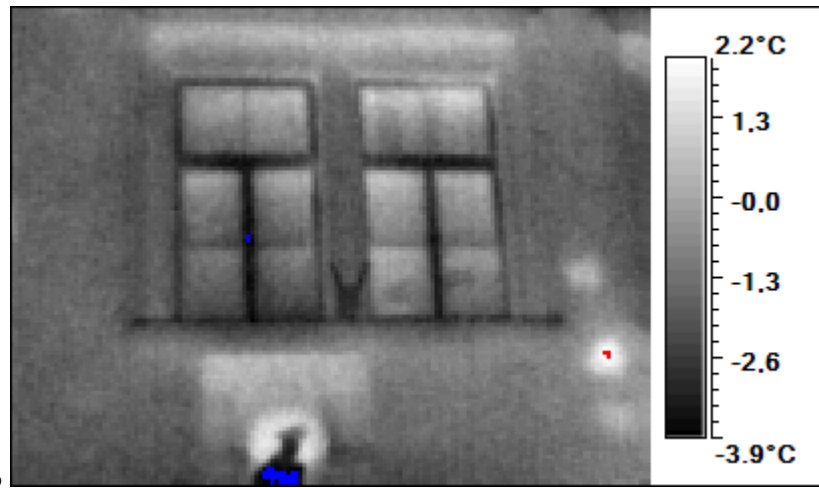
09 -9.4 4.1



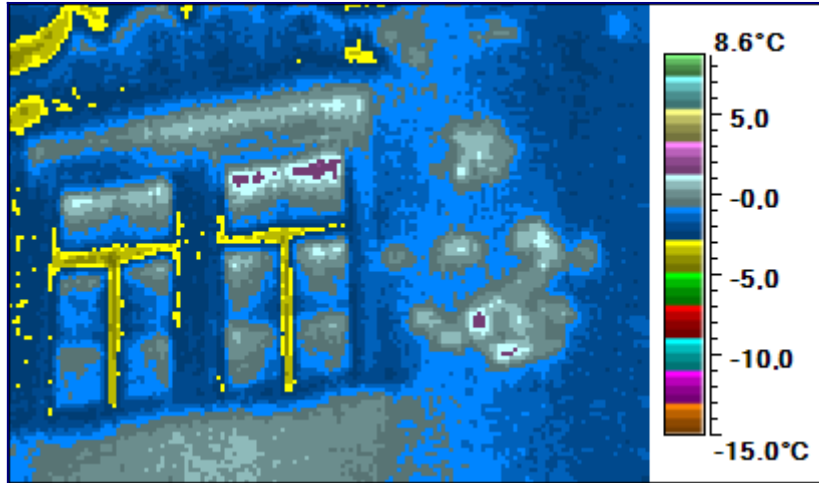
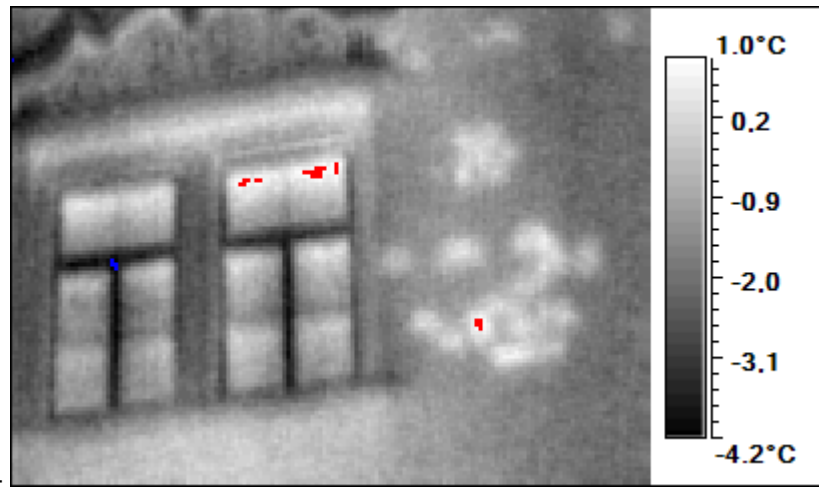
10 -4.7 2.5



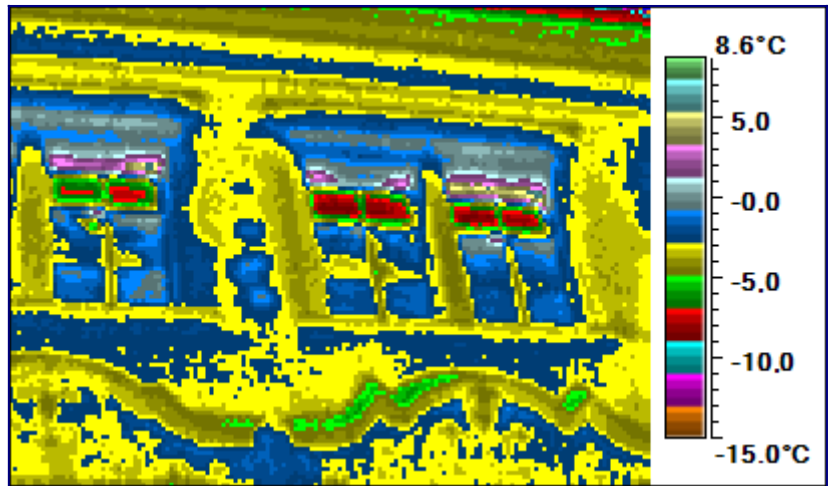
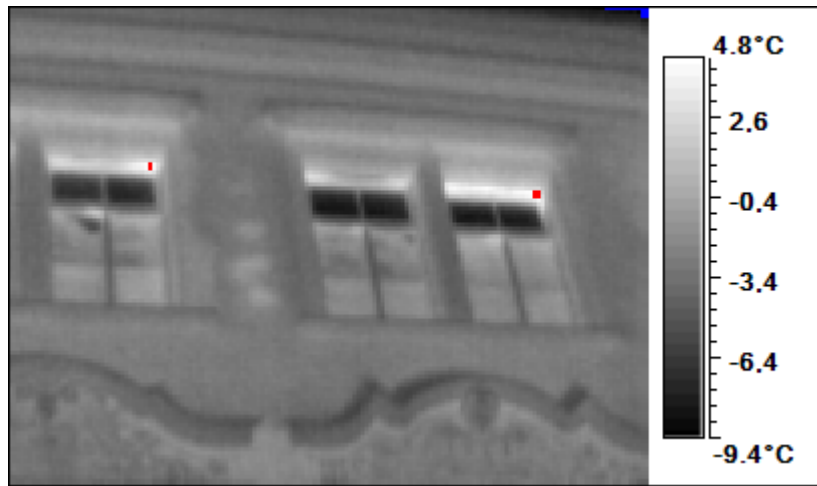
11 -4.2 2.5



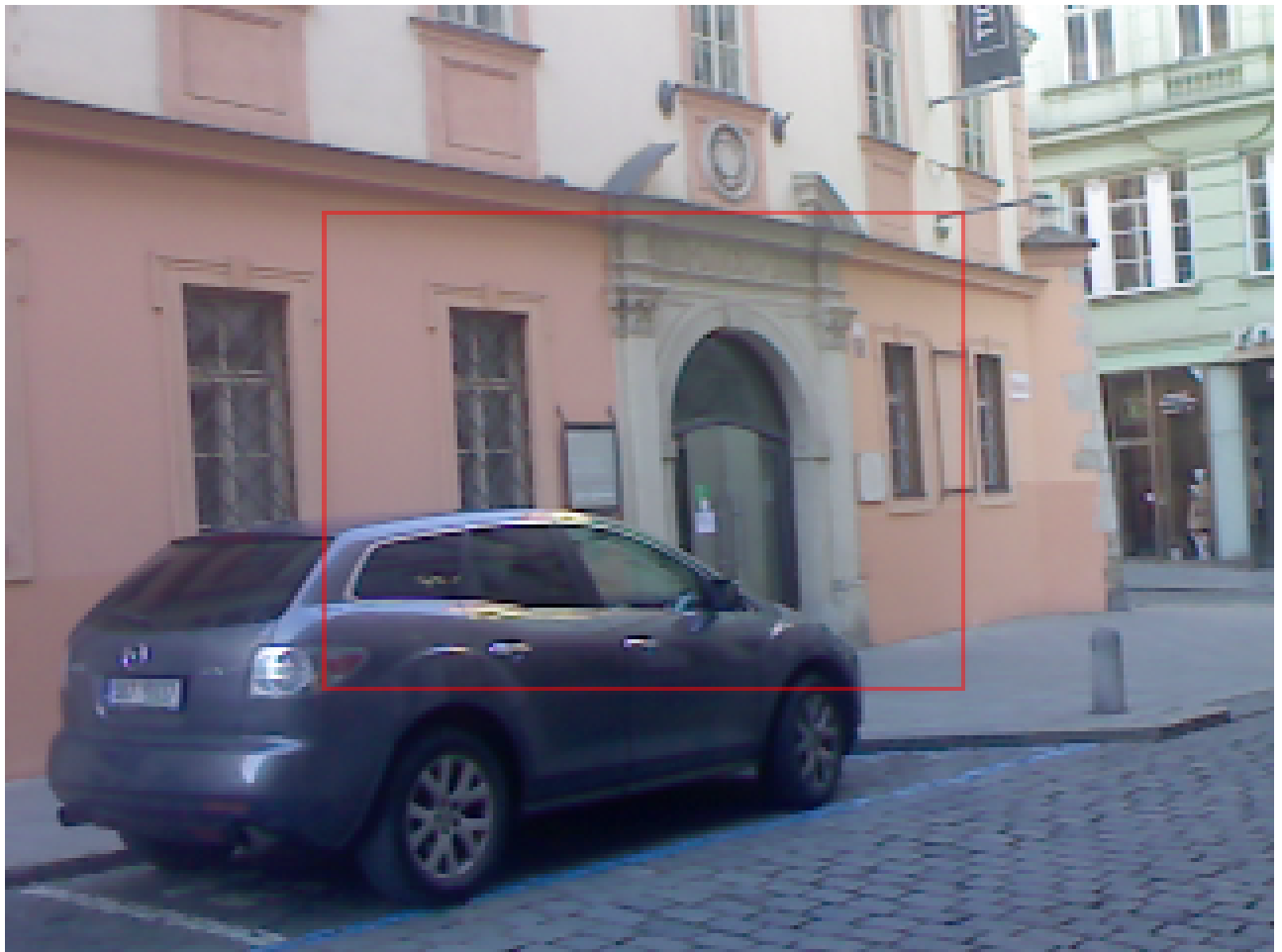
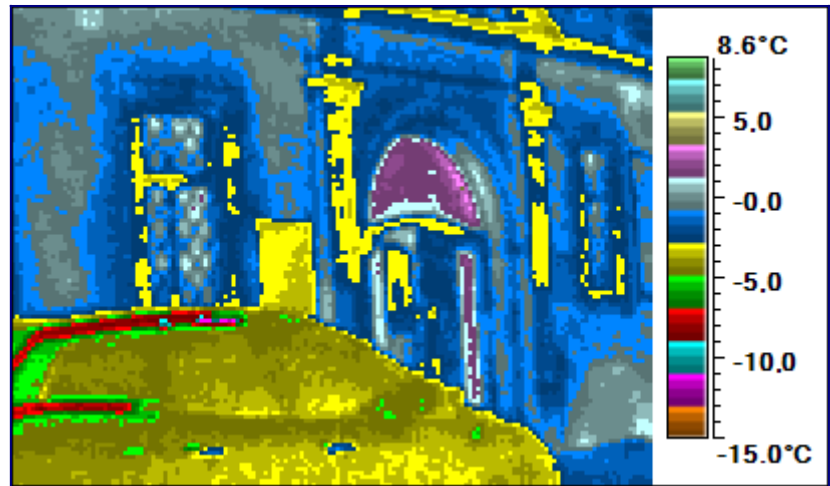
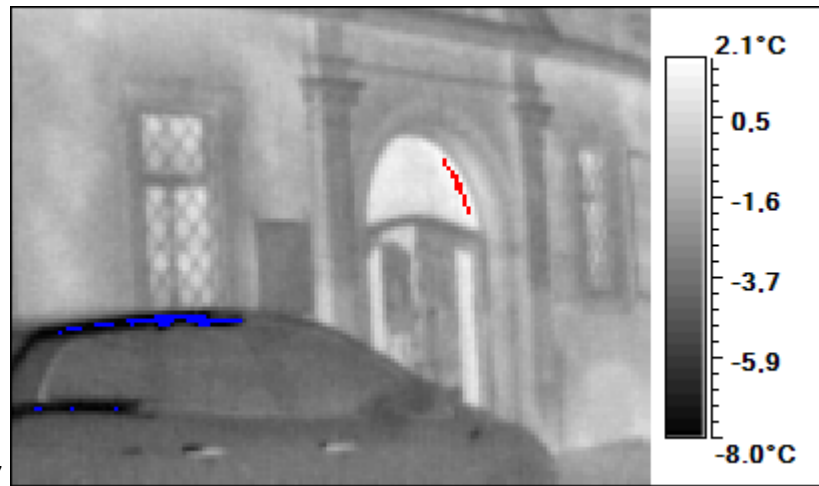
12 -4.3 1.4



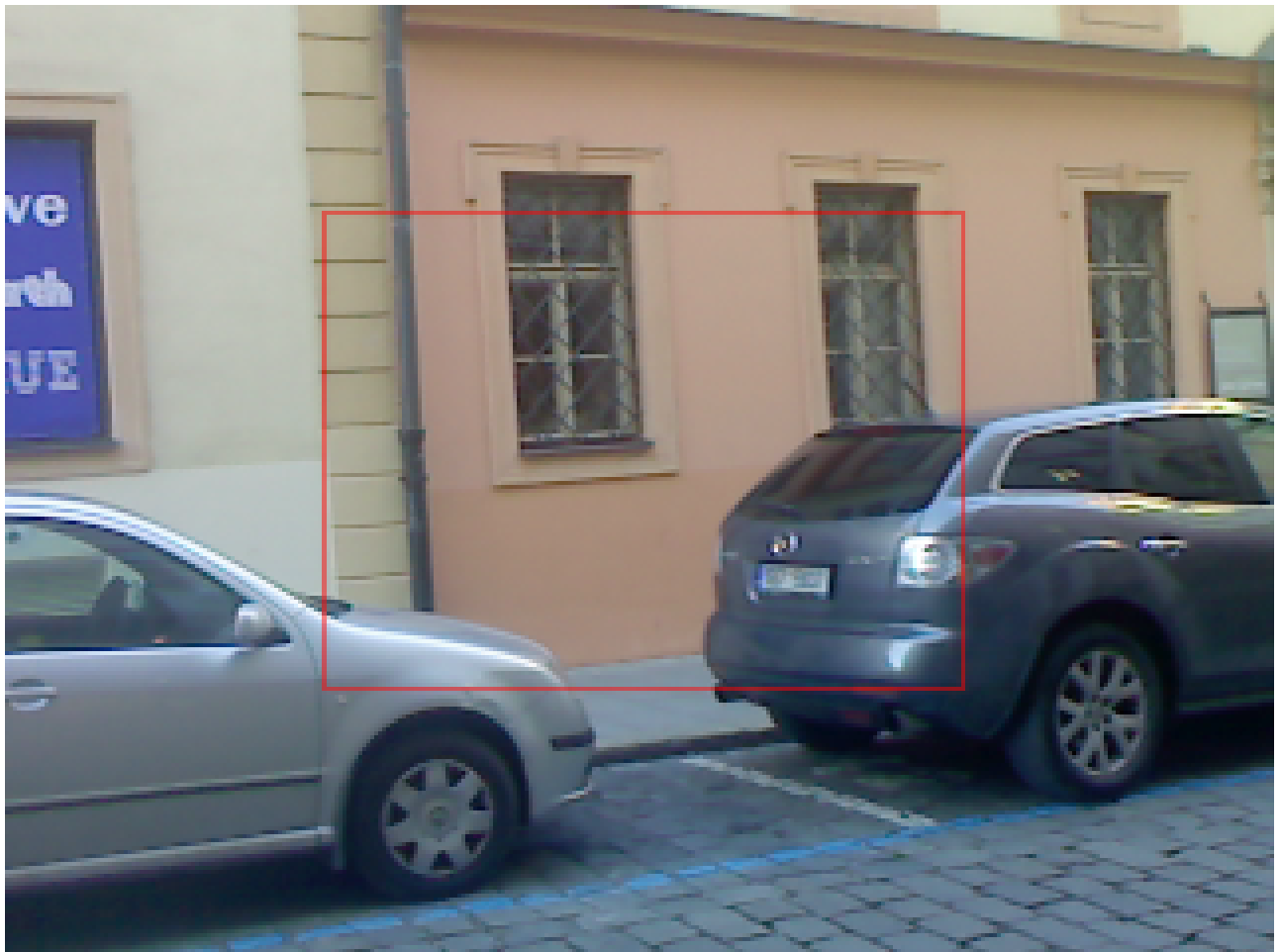
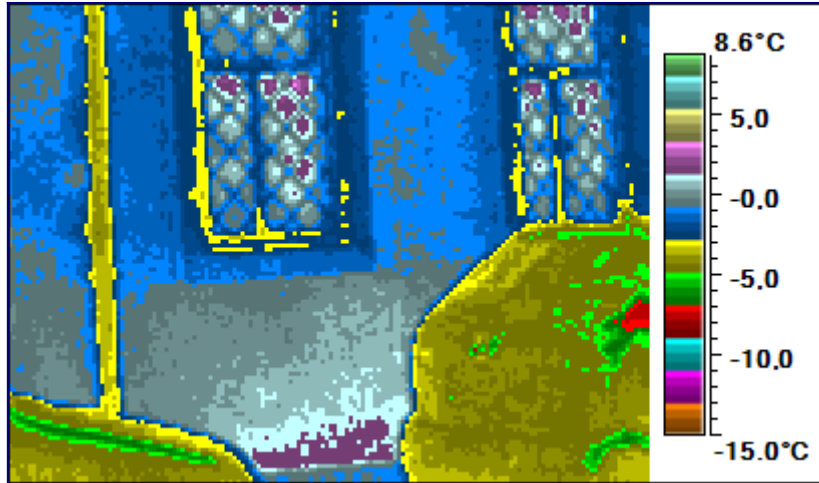
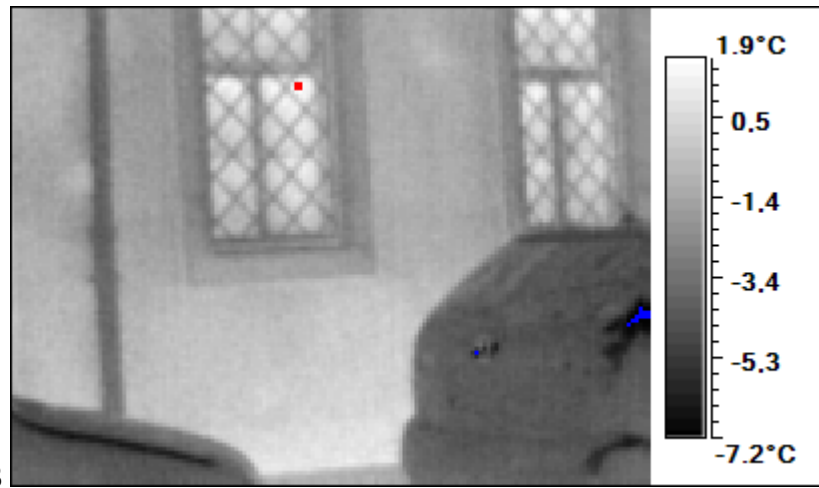
13 -17.8 5.3



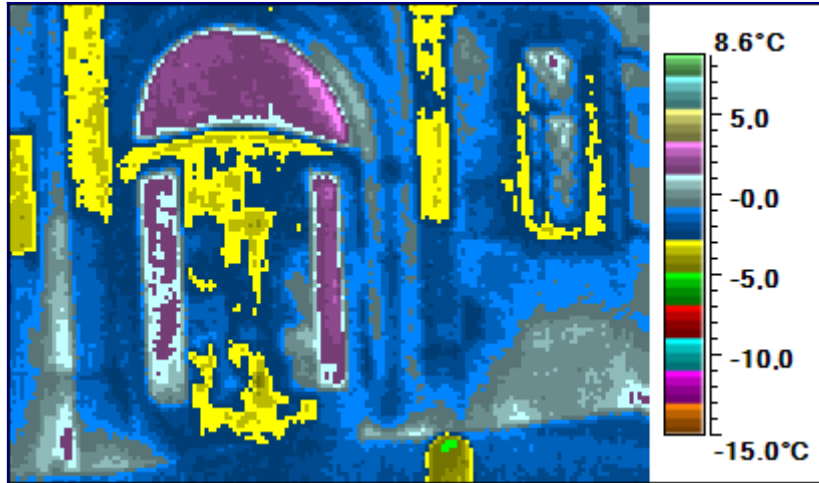
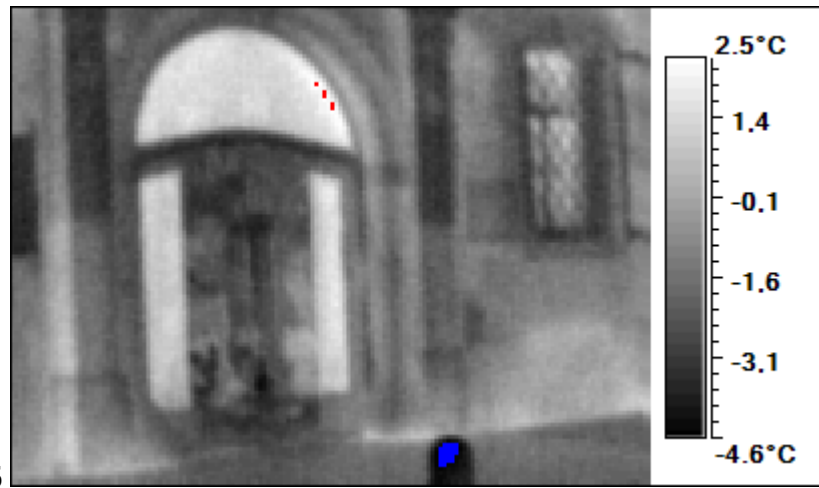
14 -11.4 2.7



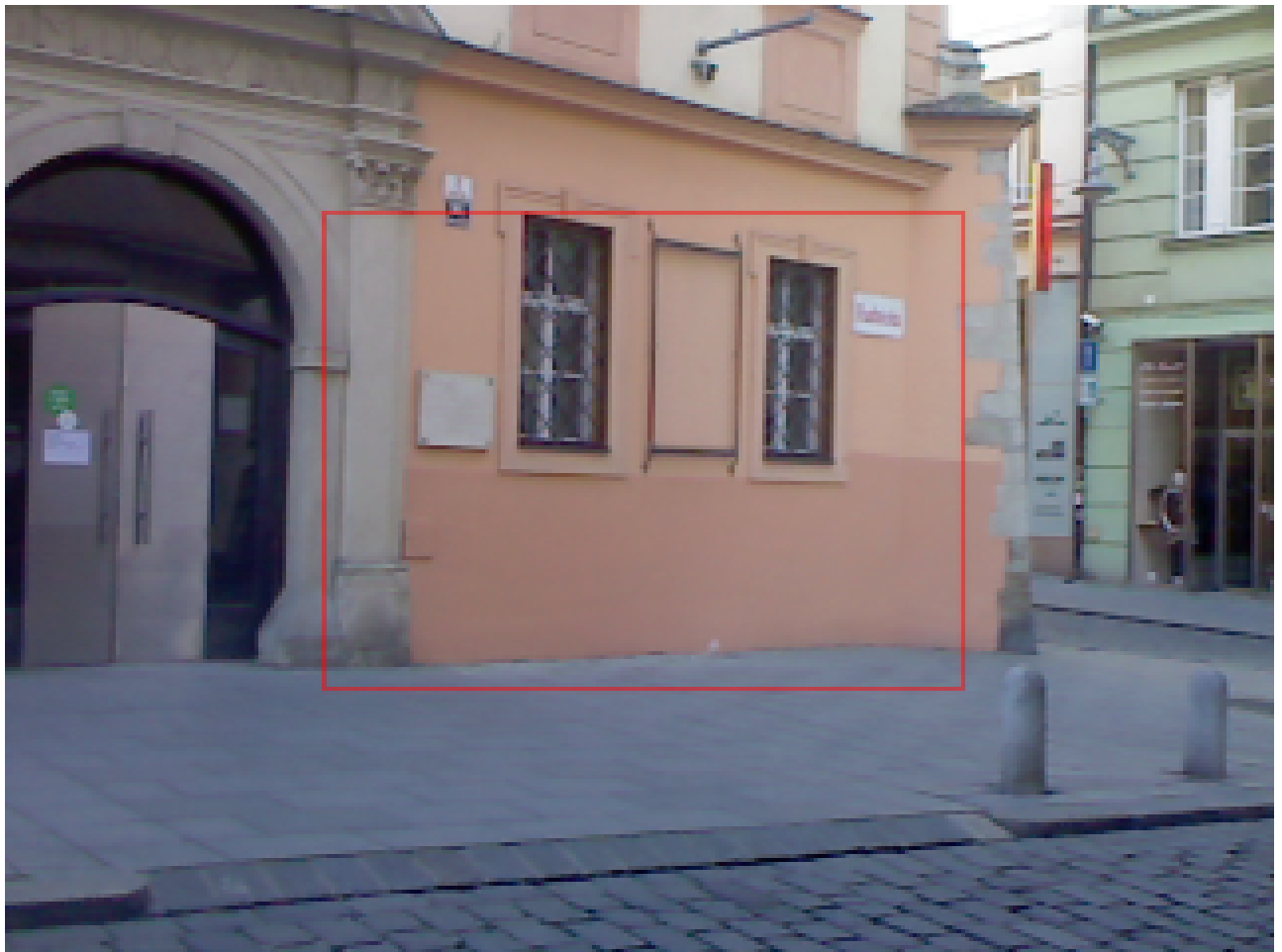
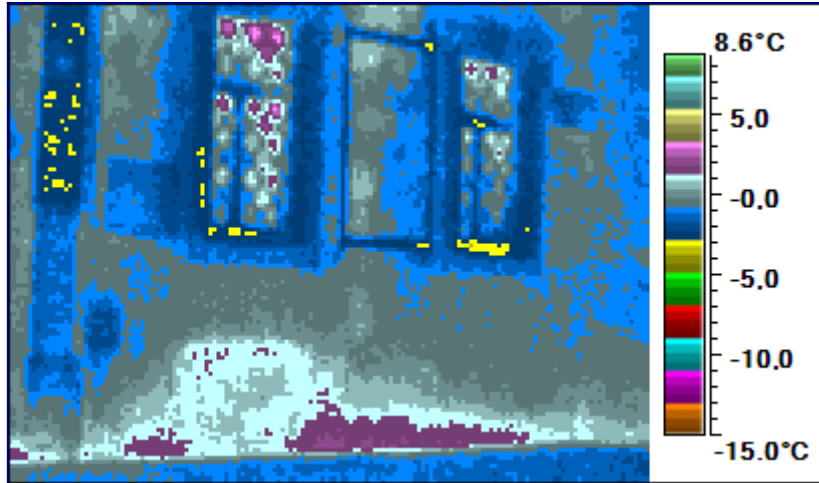
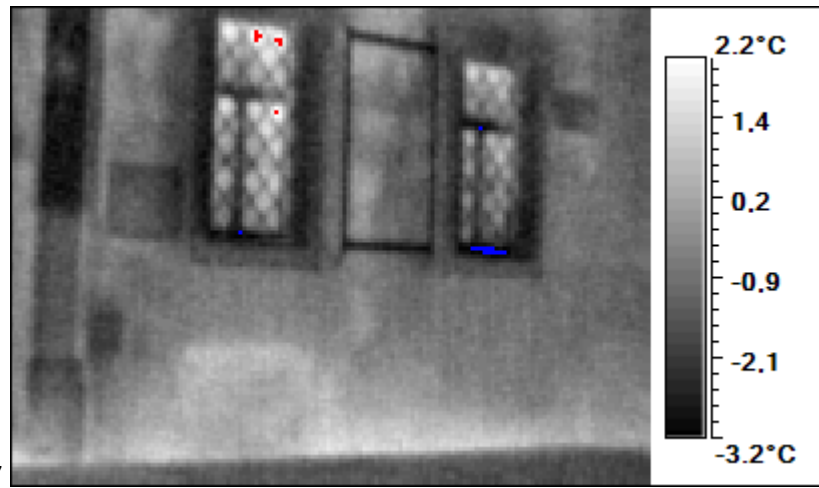
15 -7.7 2.3



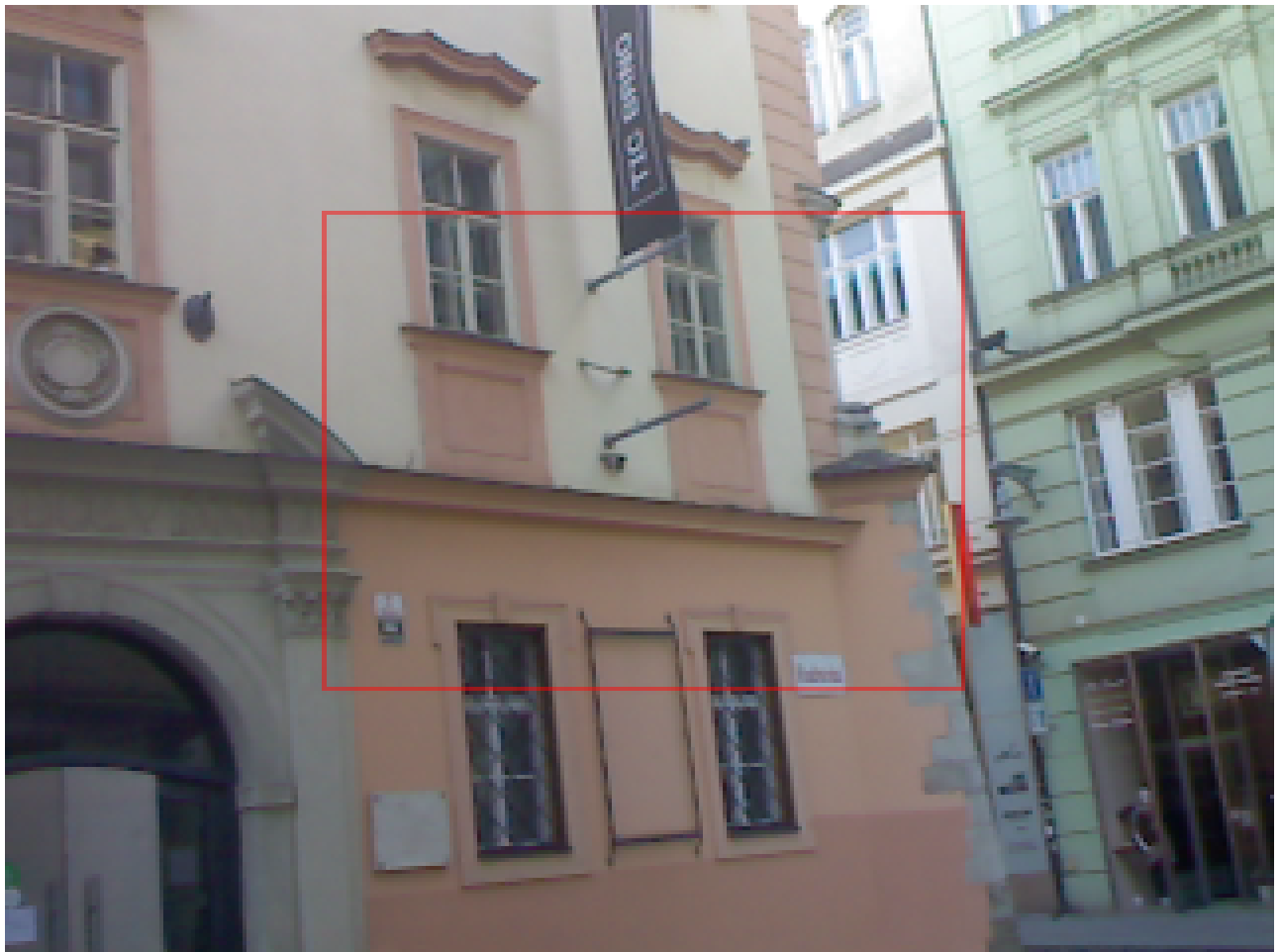
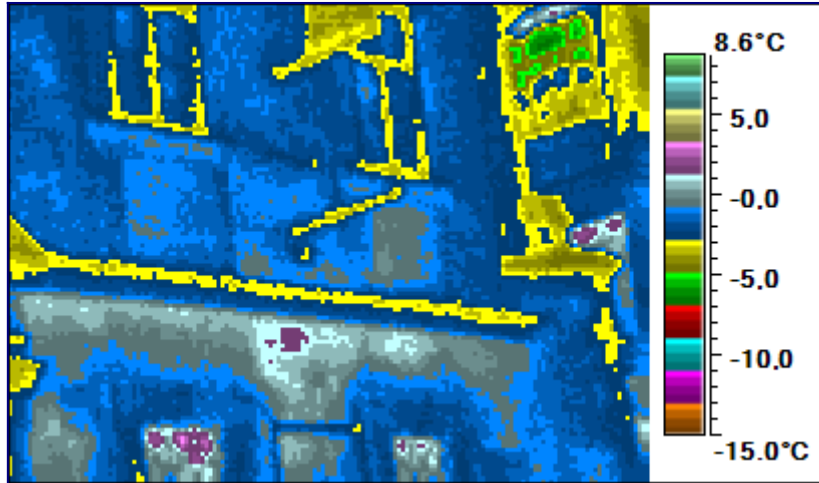
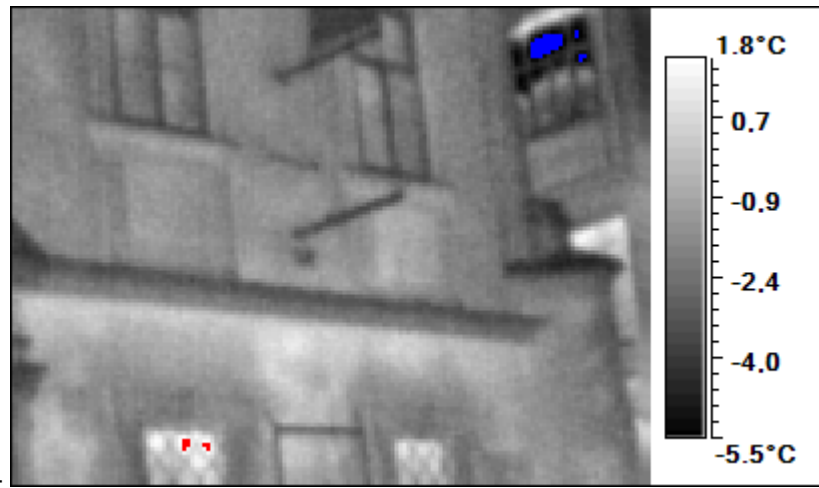
16 -5.1 2.6



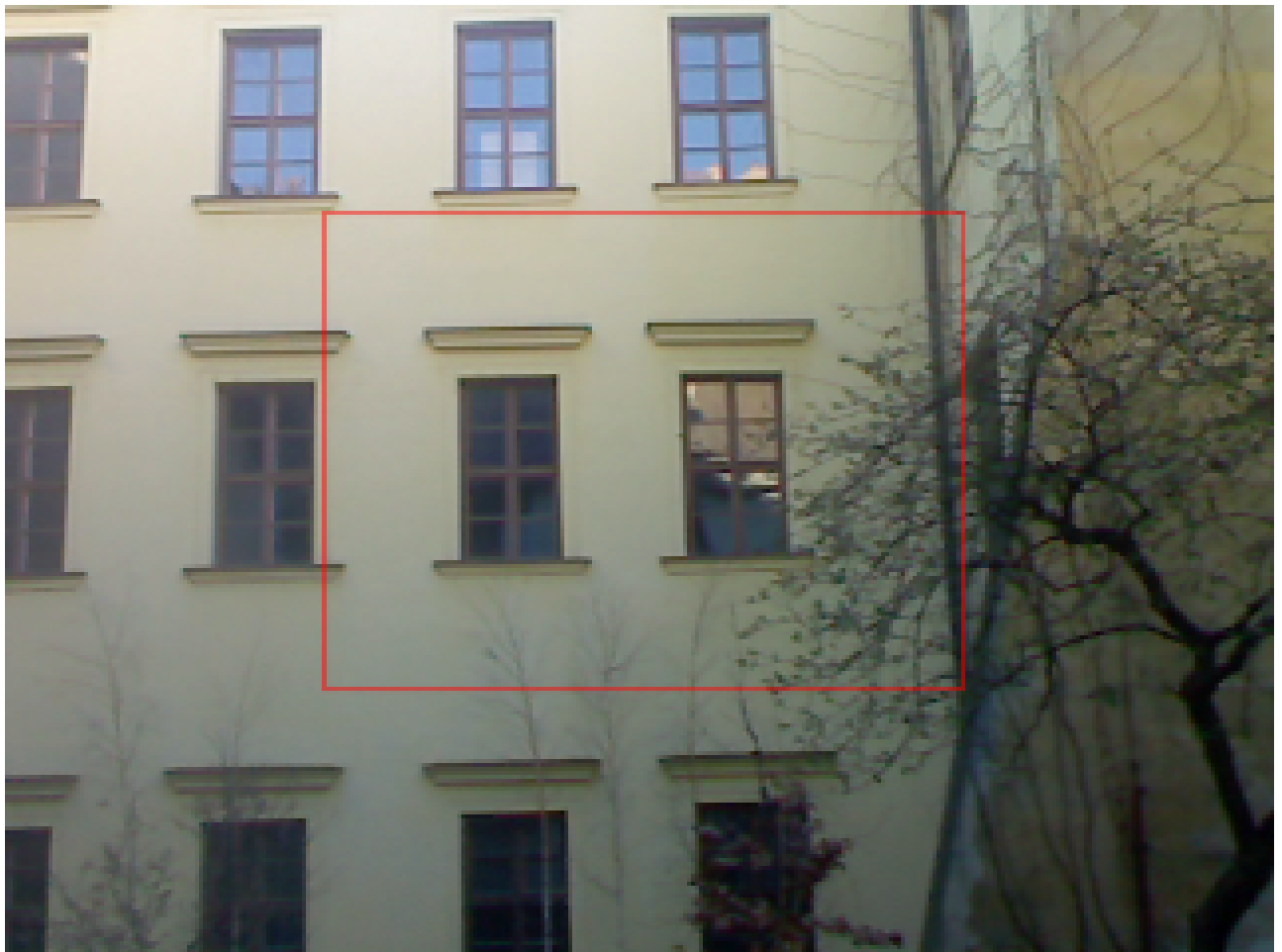
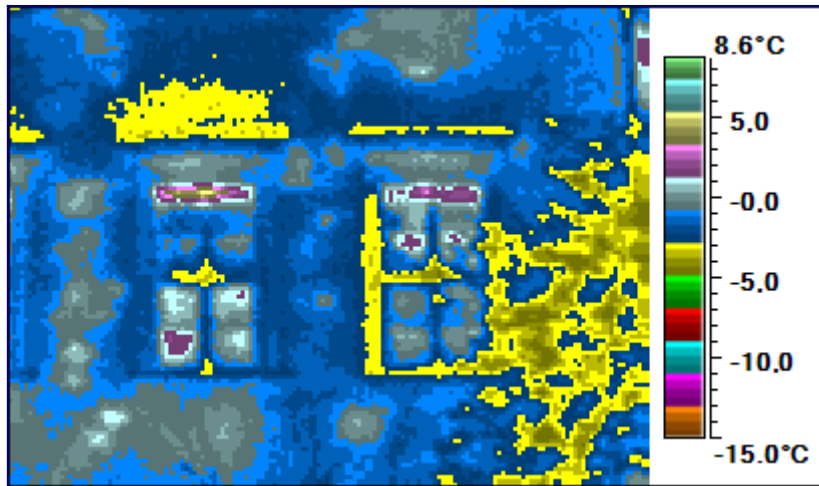
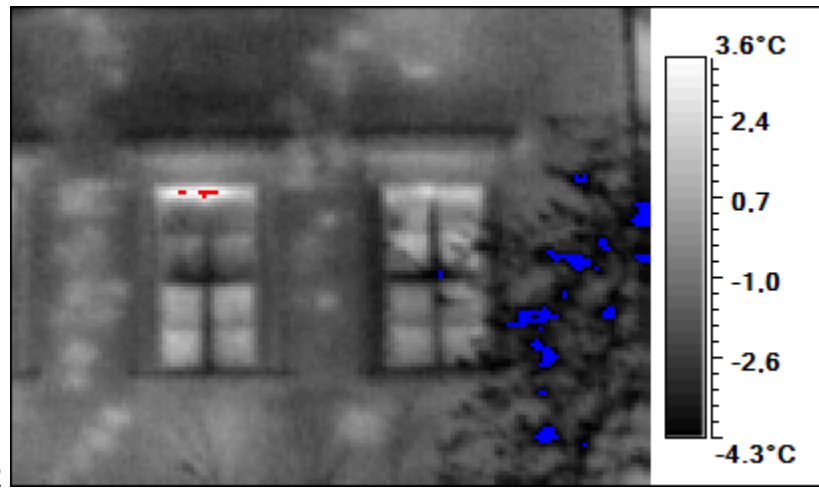
17 -3.5 2.7



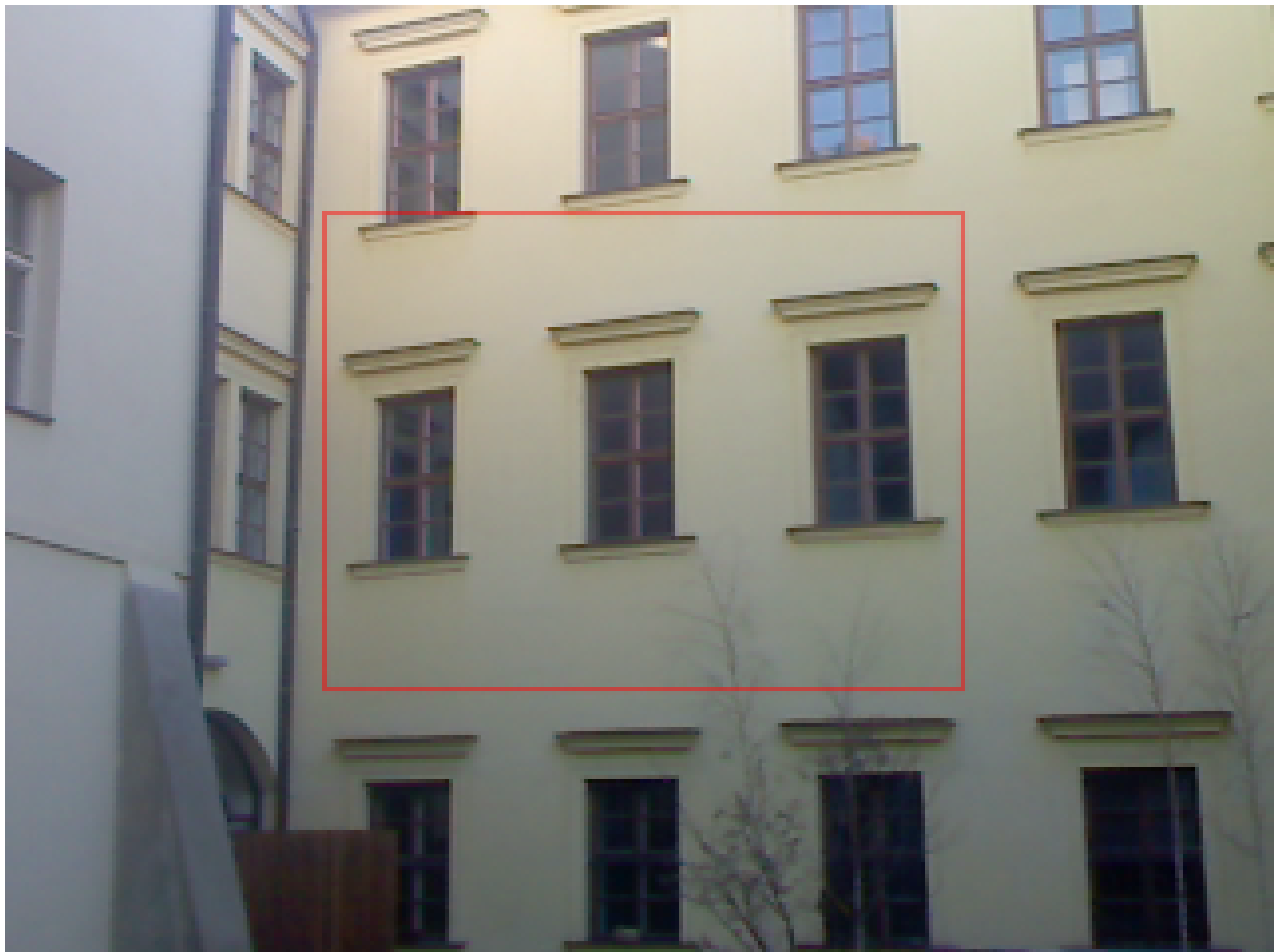
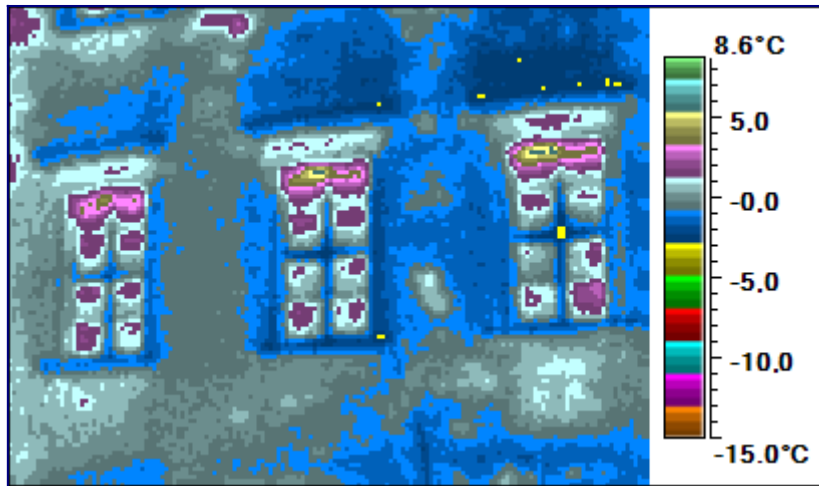
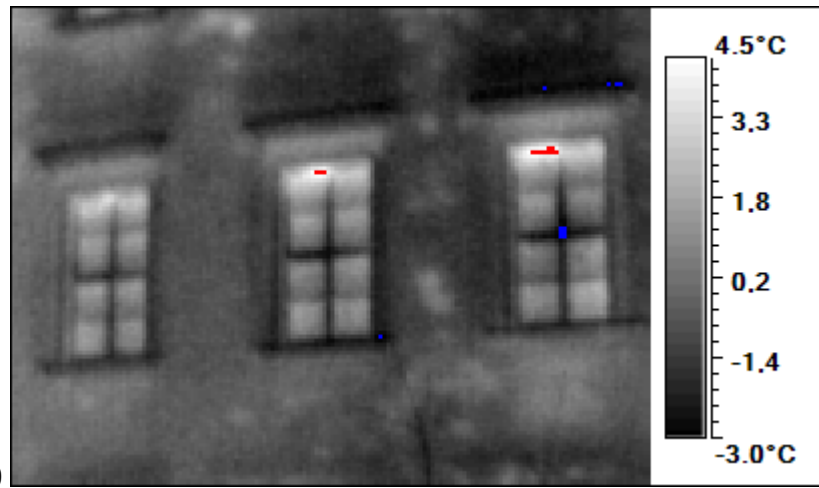
18 -6.4 2.4



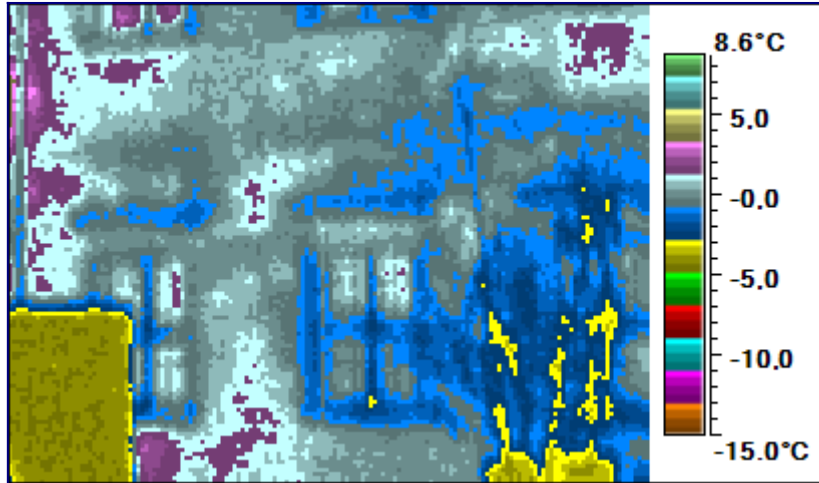
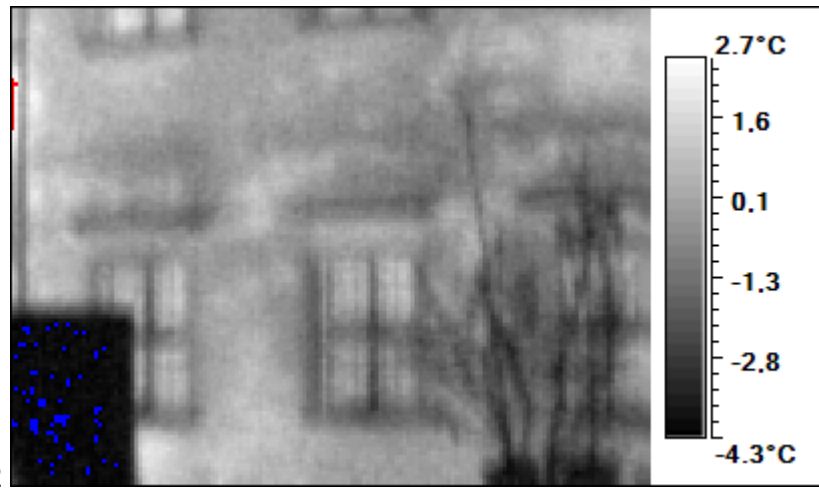
25 -4.8 4.2



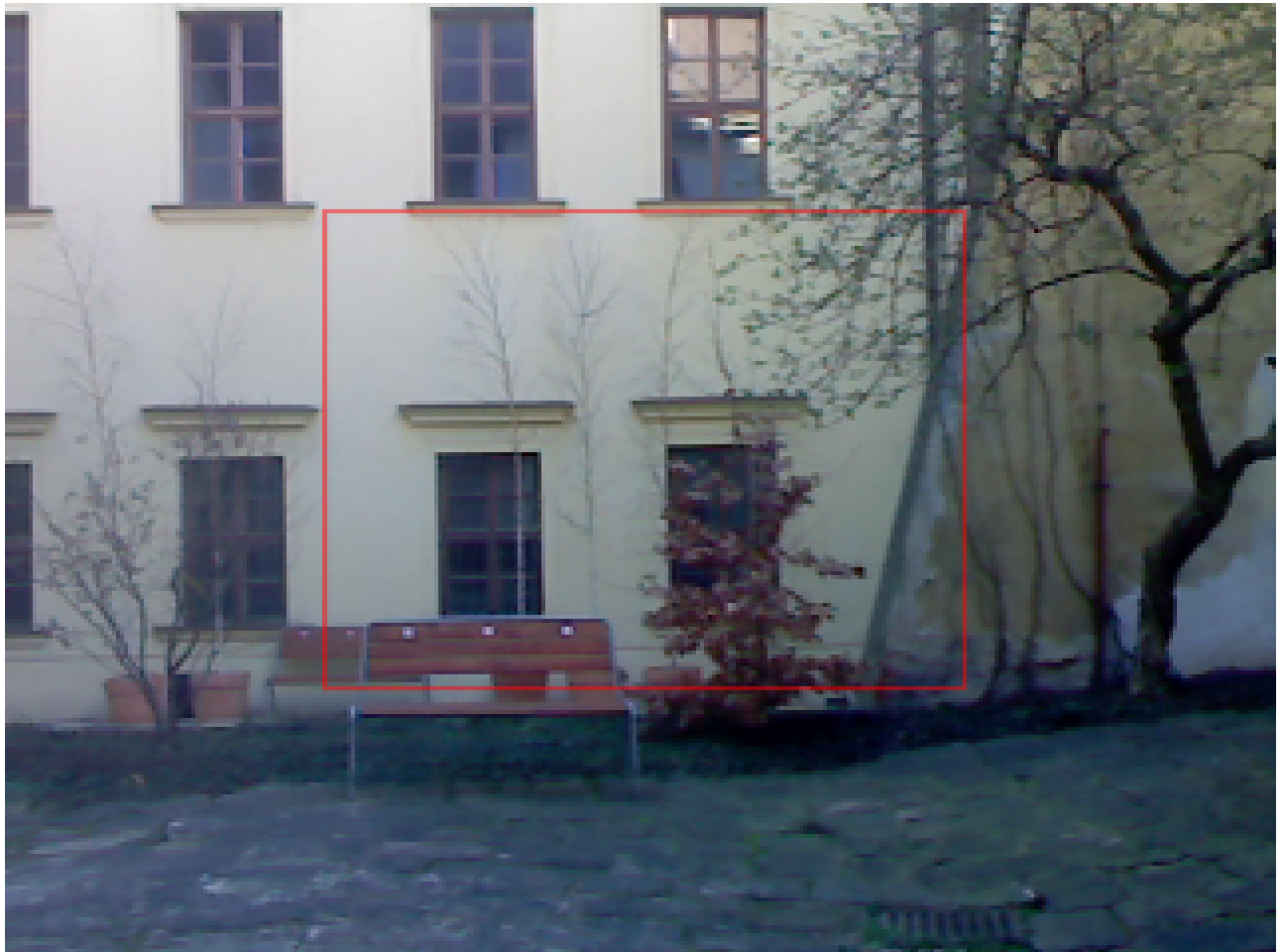
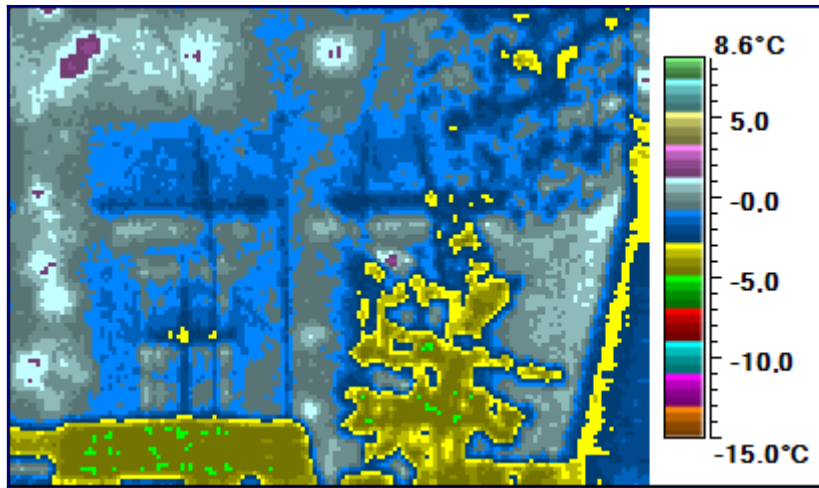
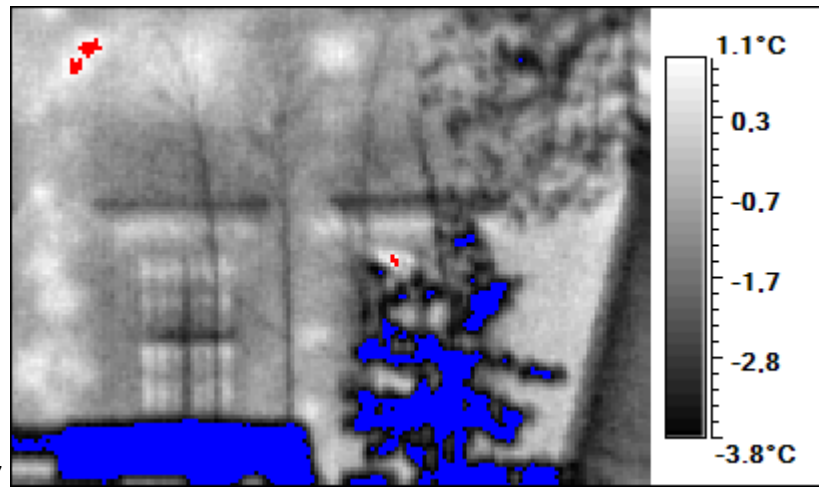
26 -3.1 5.0



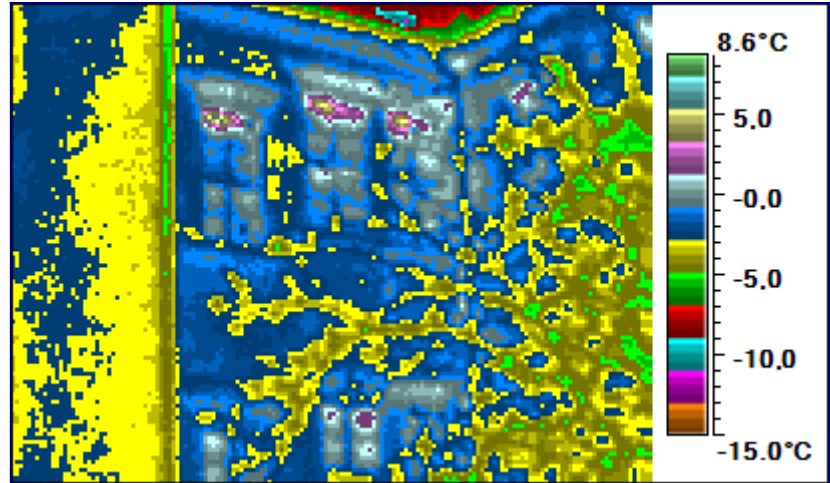
27 -4.4 3.2



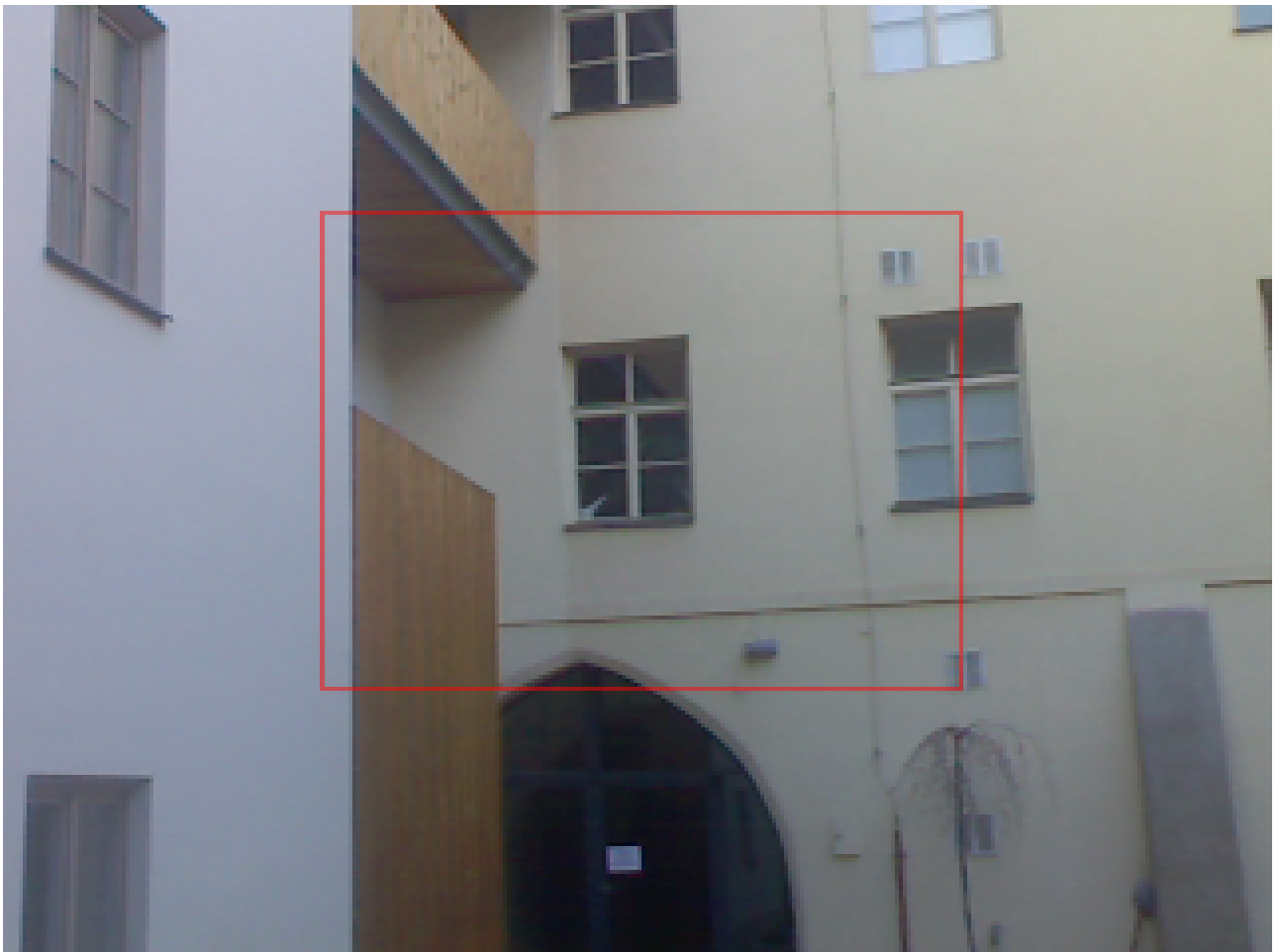
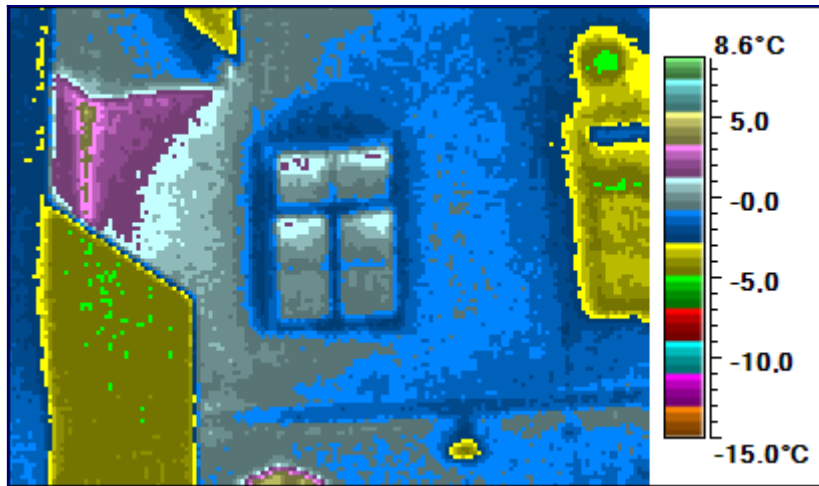
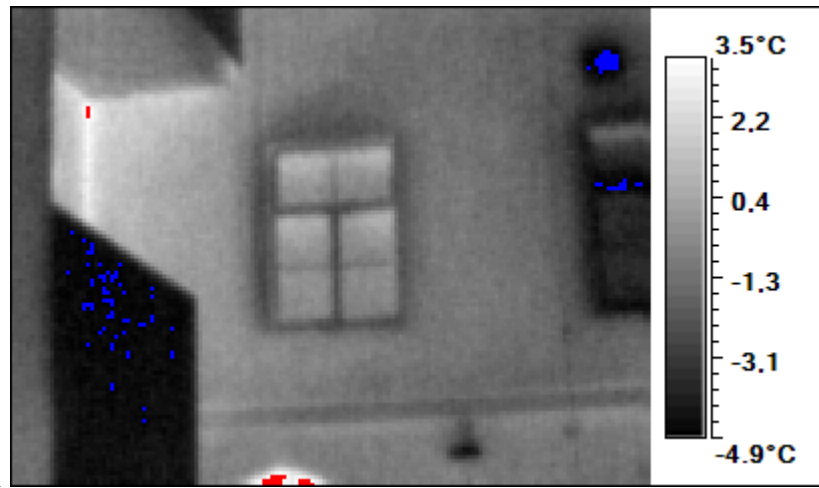
28 -5.3 1.7



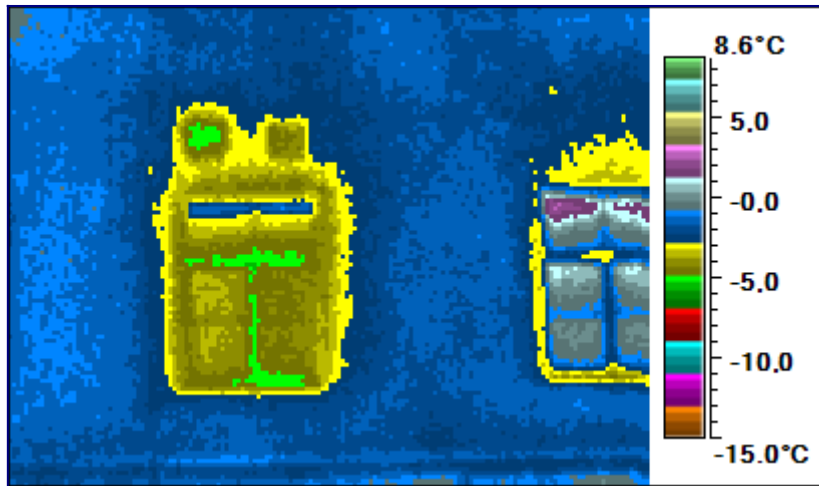
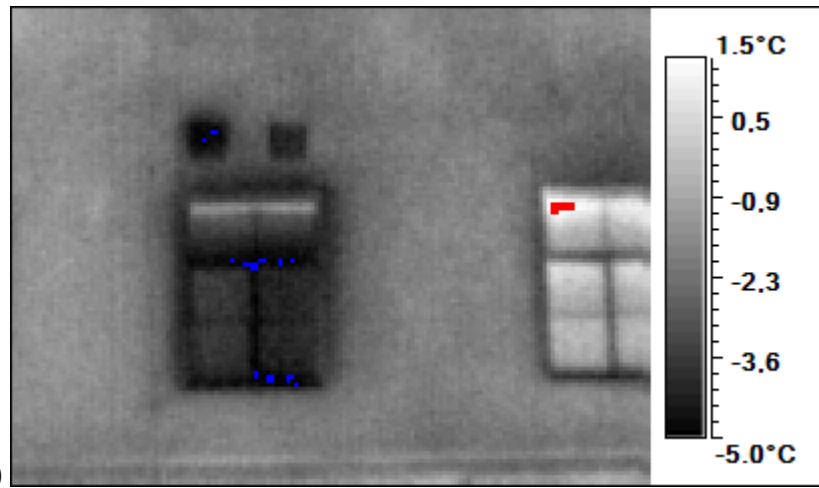
29 -10.9 4.7



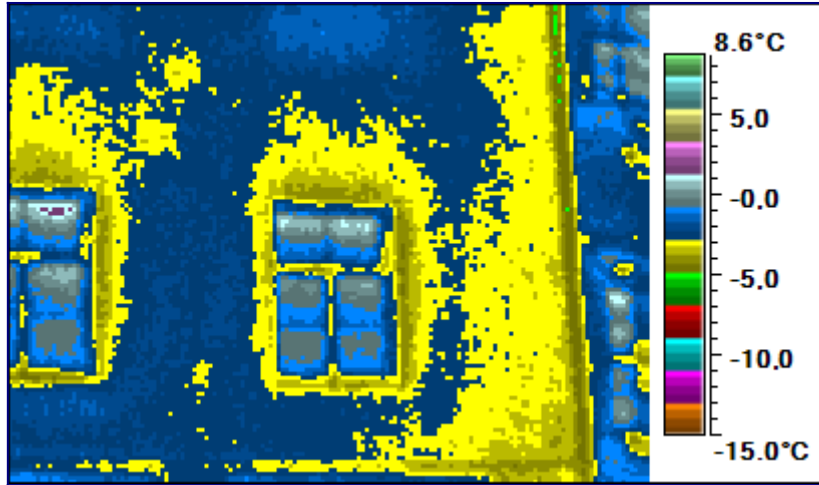
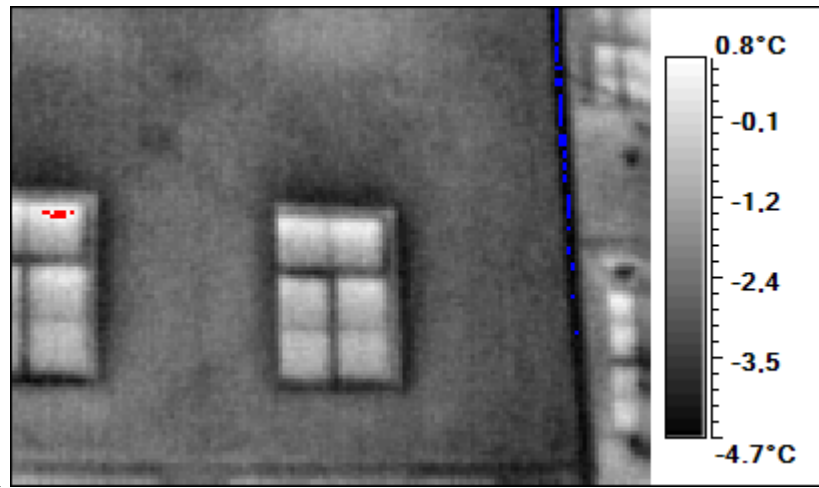
30 -5.2 4.1



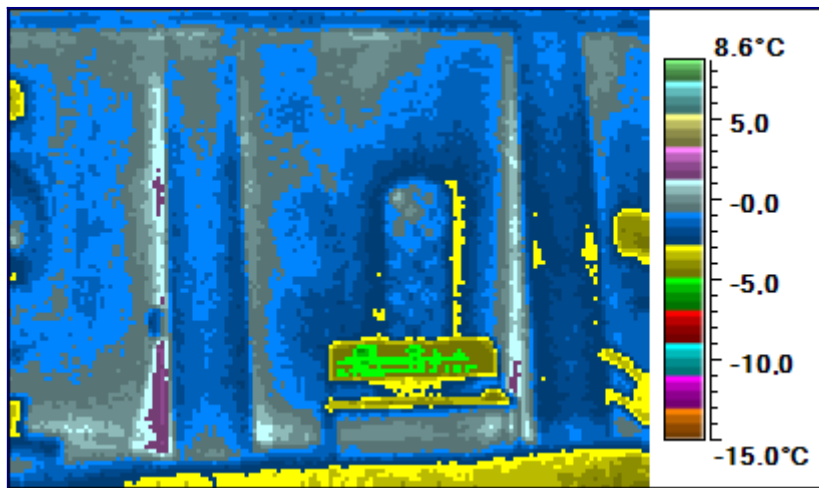
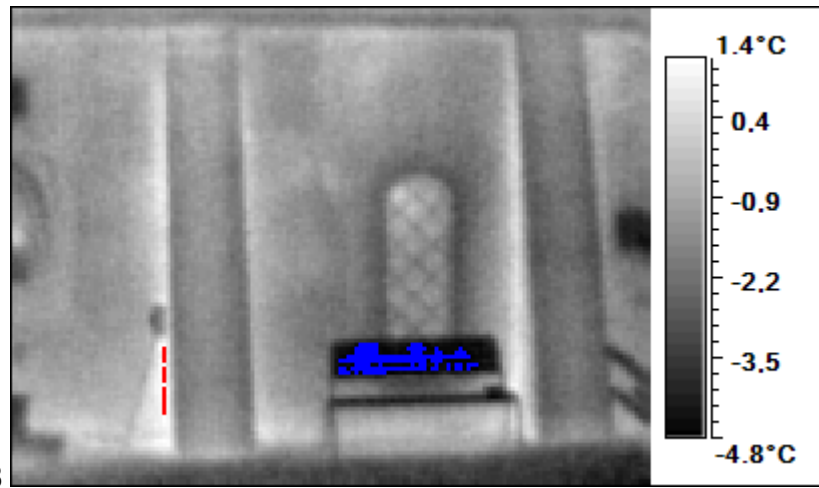
31 -5.3 1.9



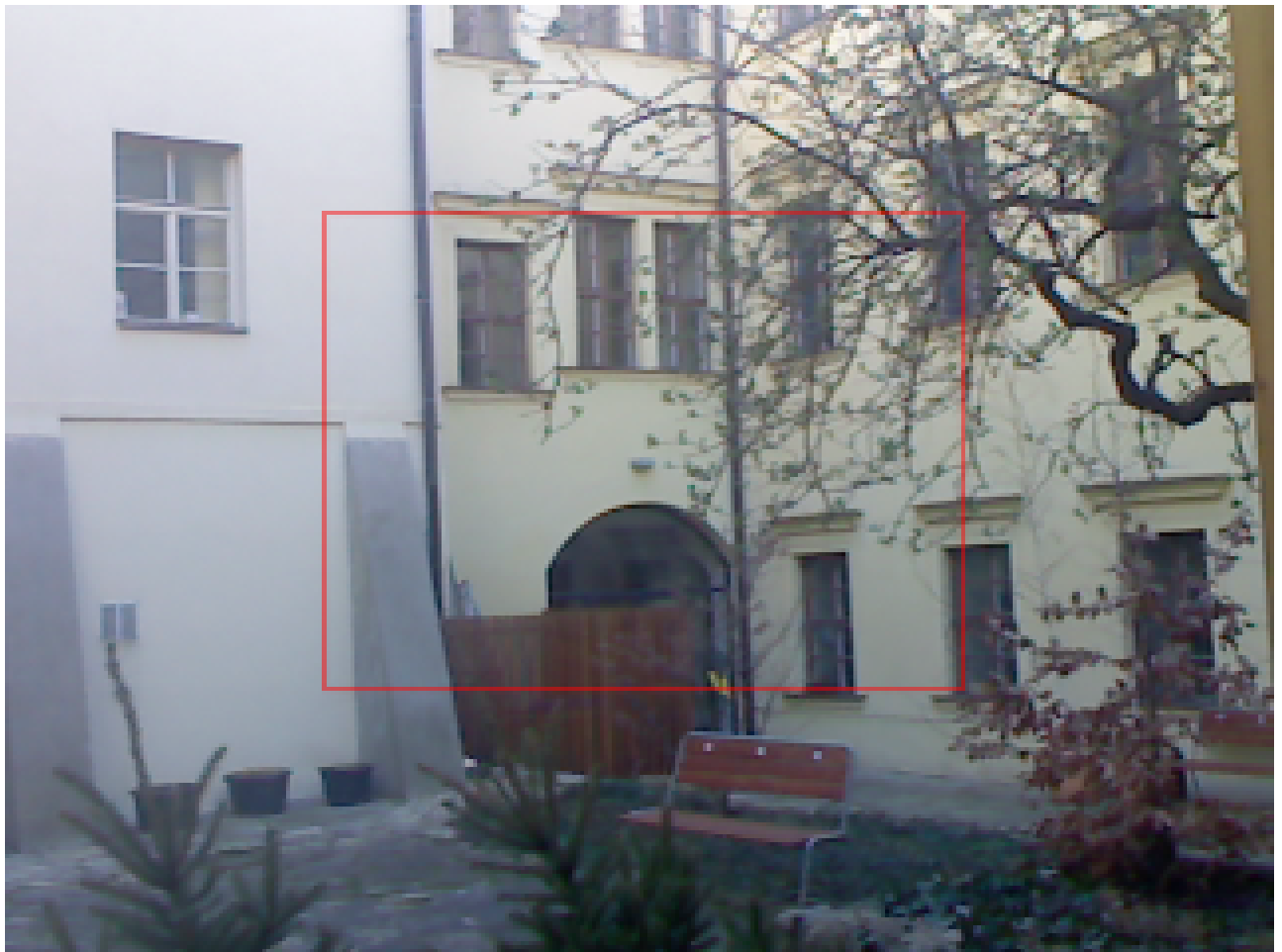
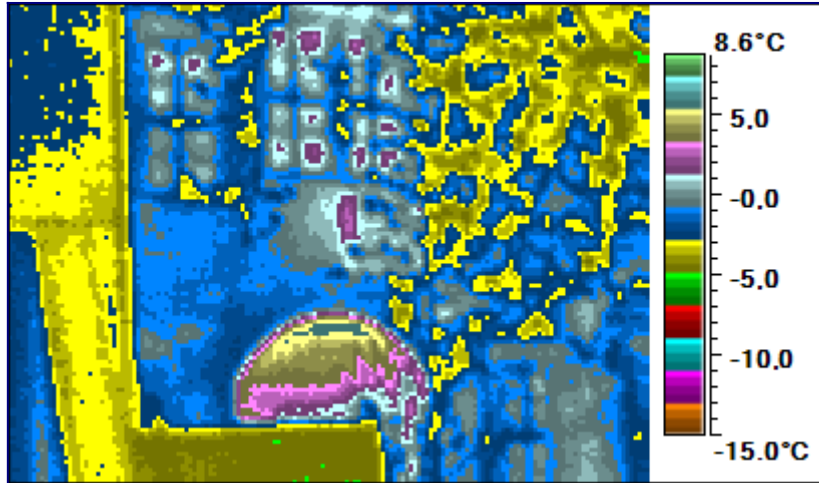
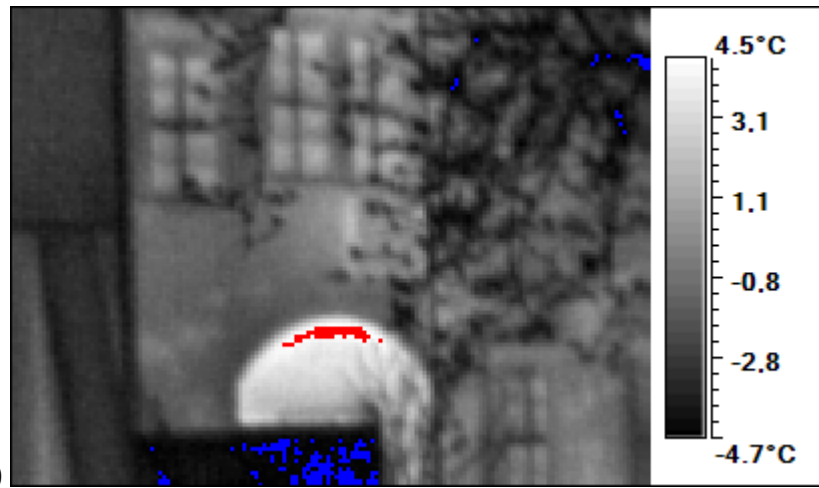
32 -4.9 1.1



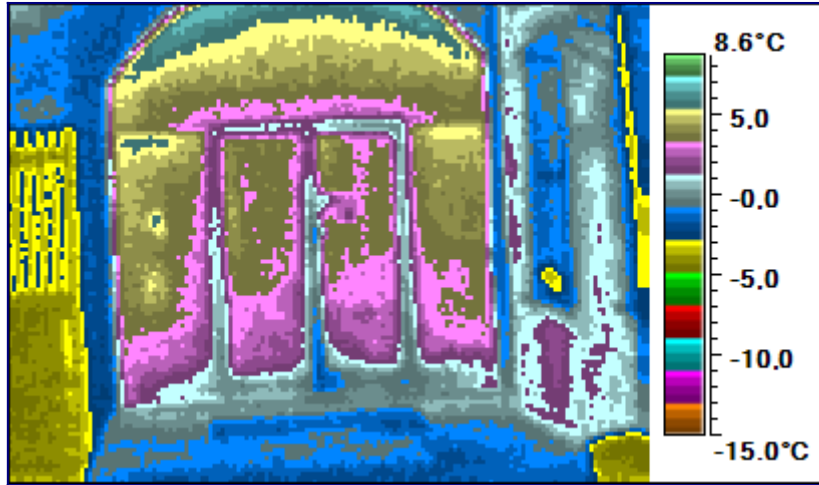
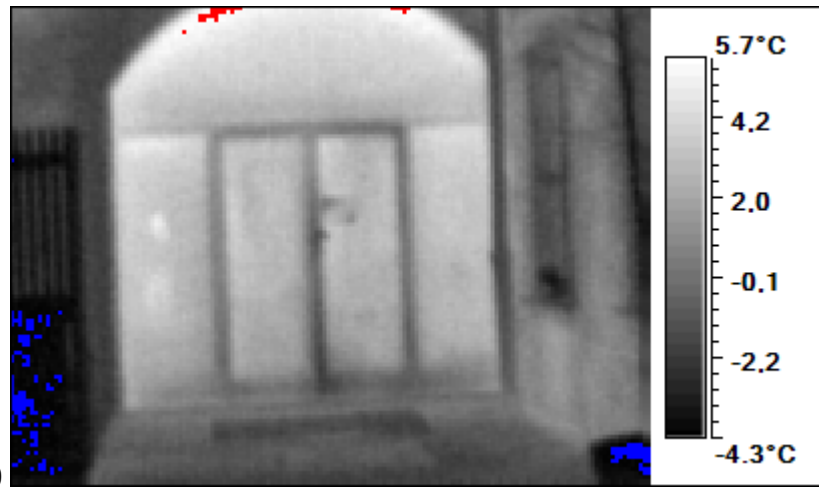
33 -5.7 1.8



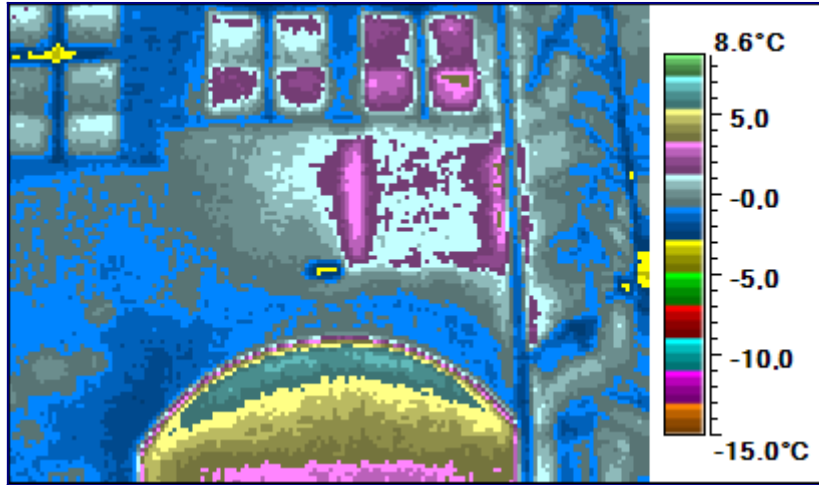
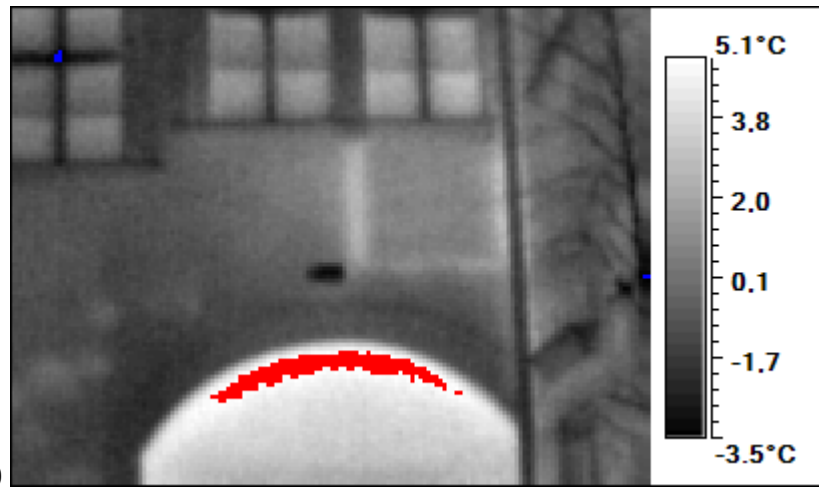
34 -4.9 5.0



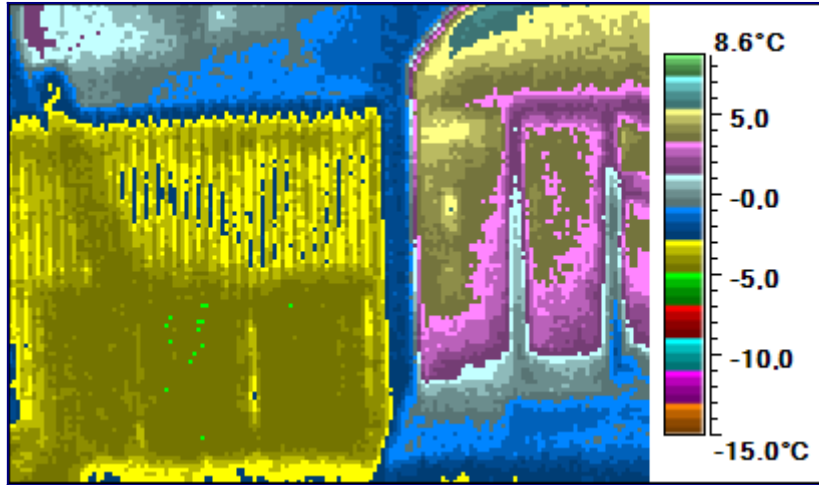
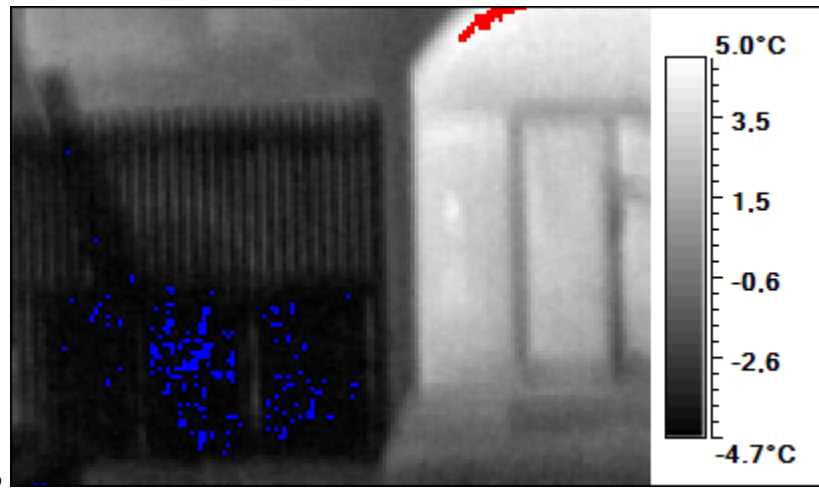
35 -4.6 6.0



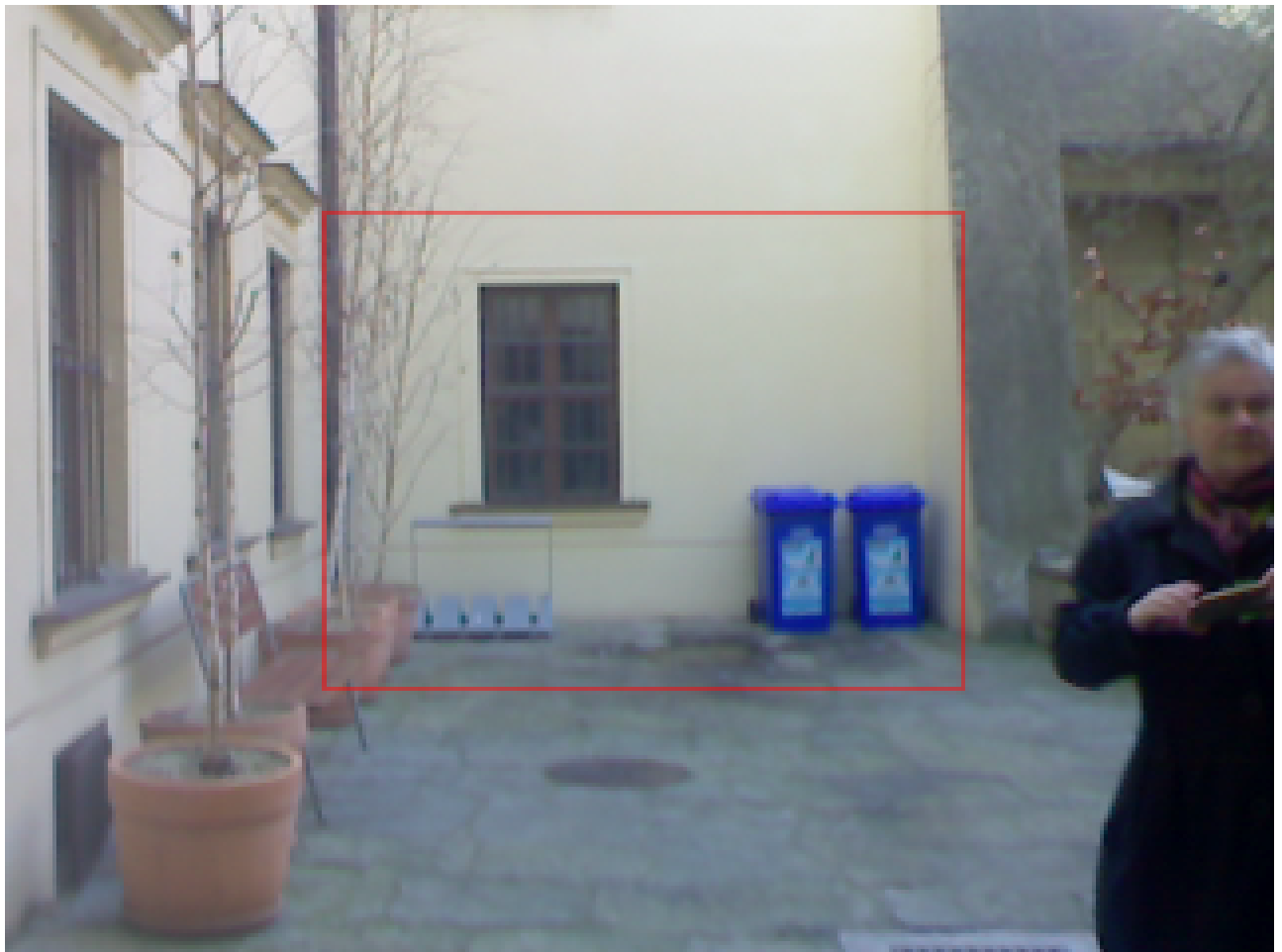
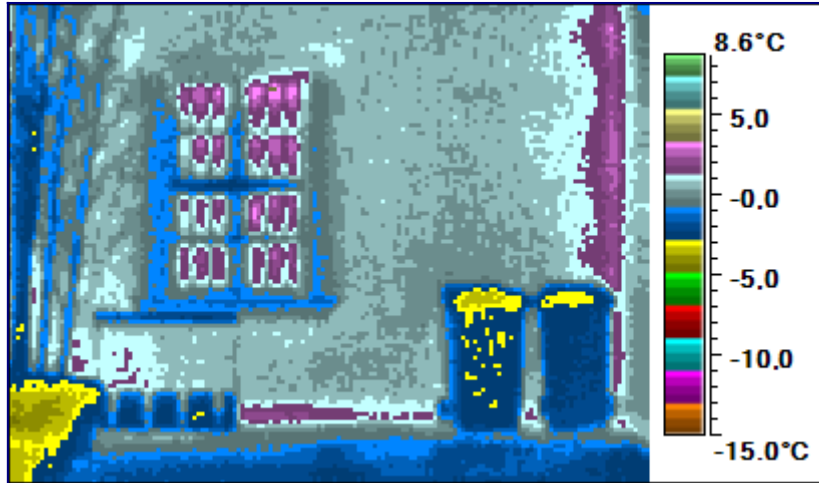
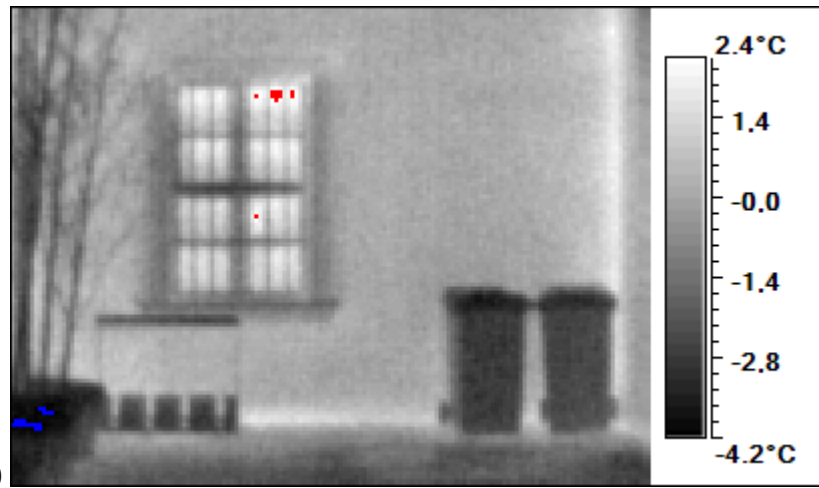
36 -3.7 5.9



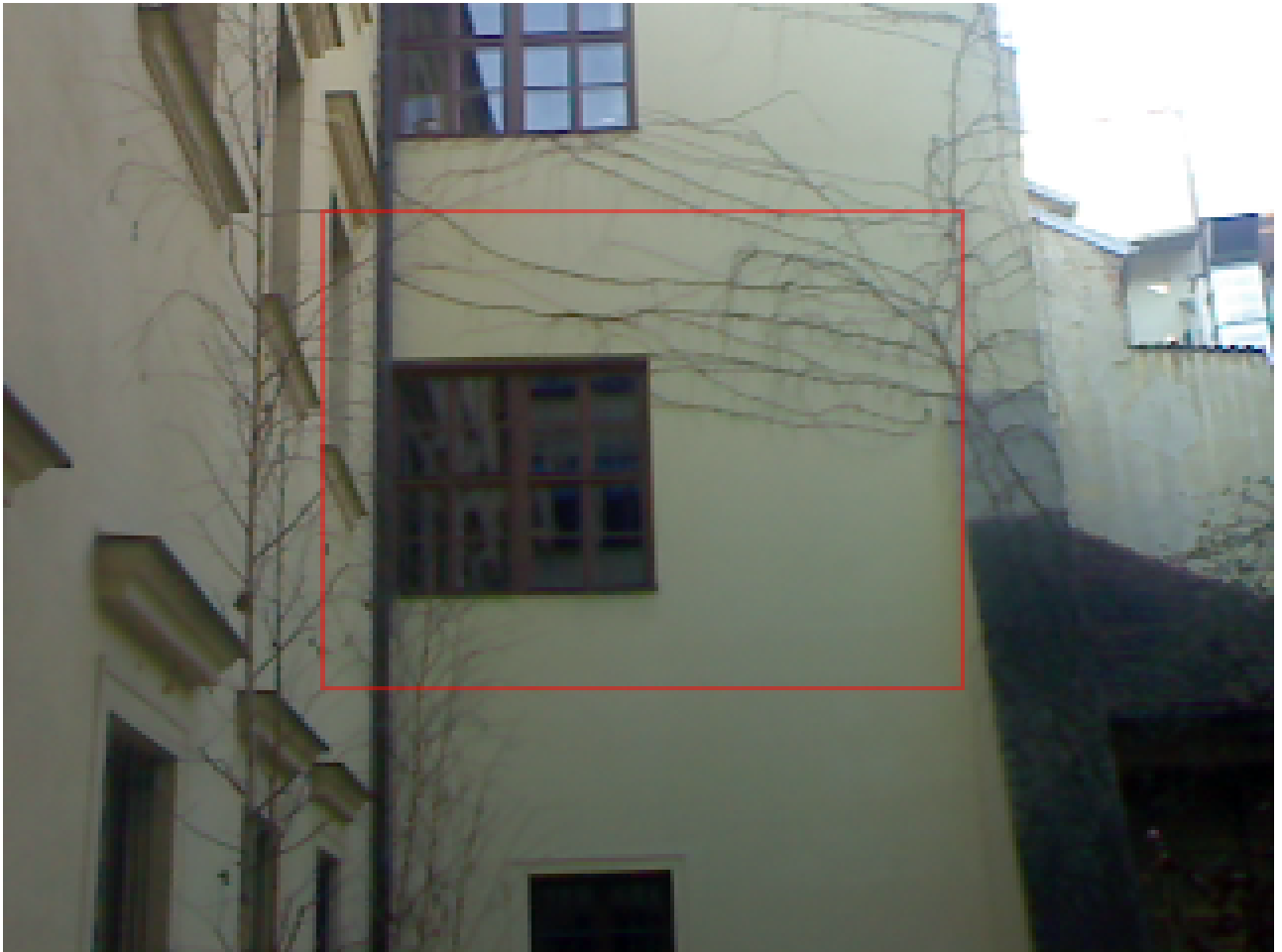
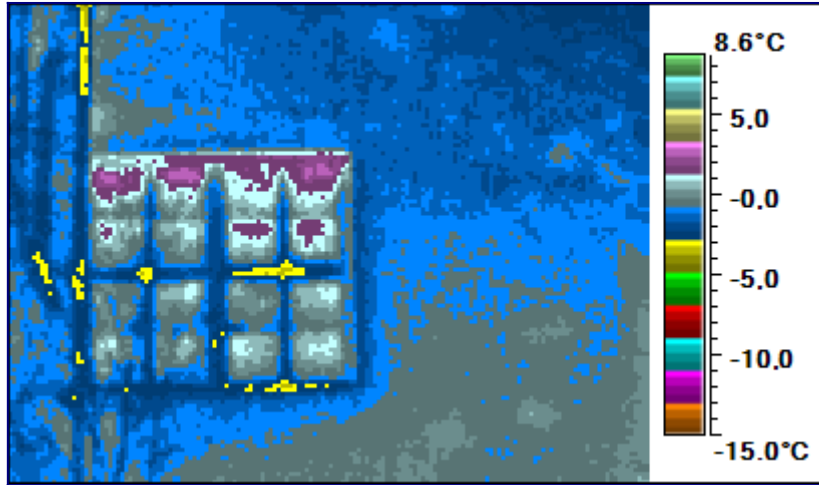
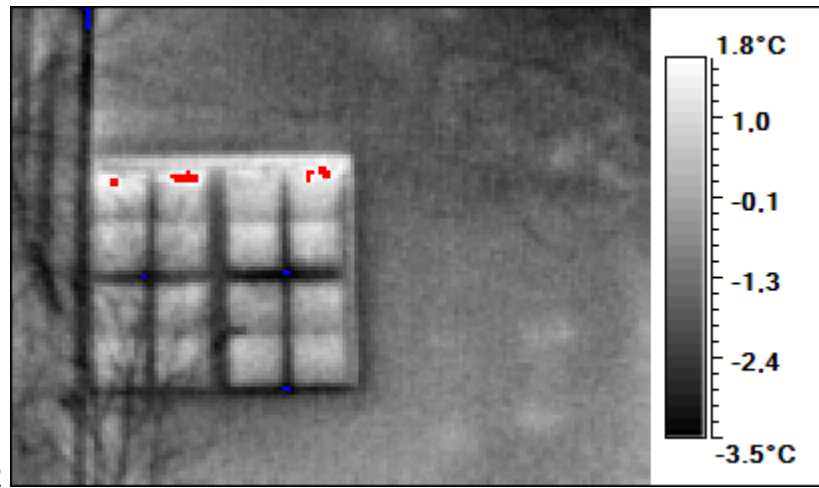
37 -4.9 5.5

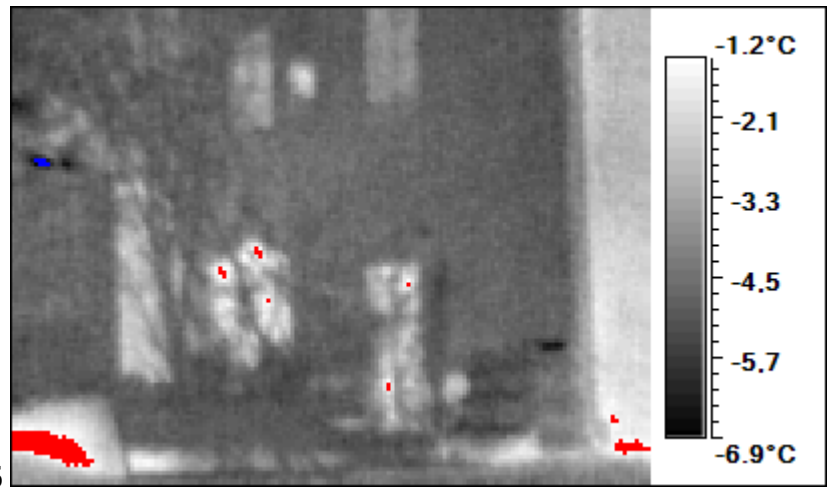


38 -4.4 2.9

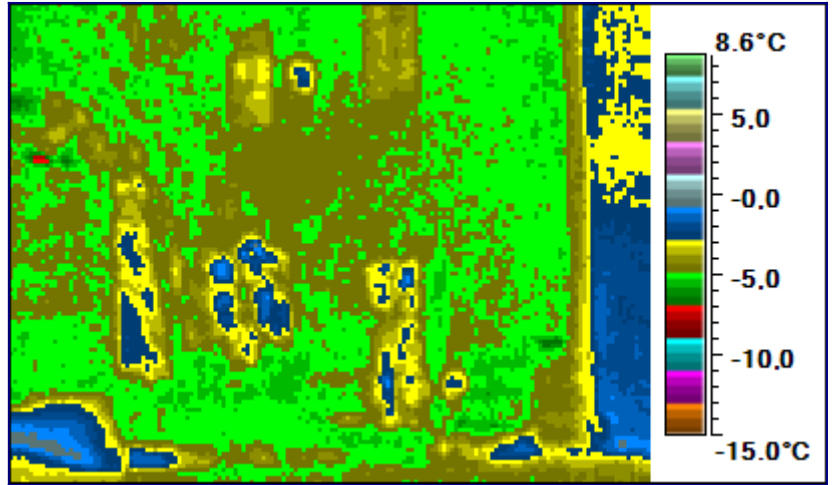


39 -3.9 2.2

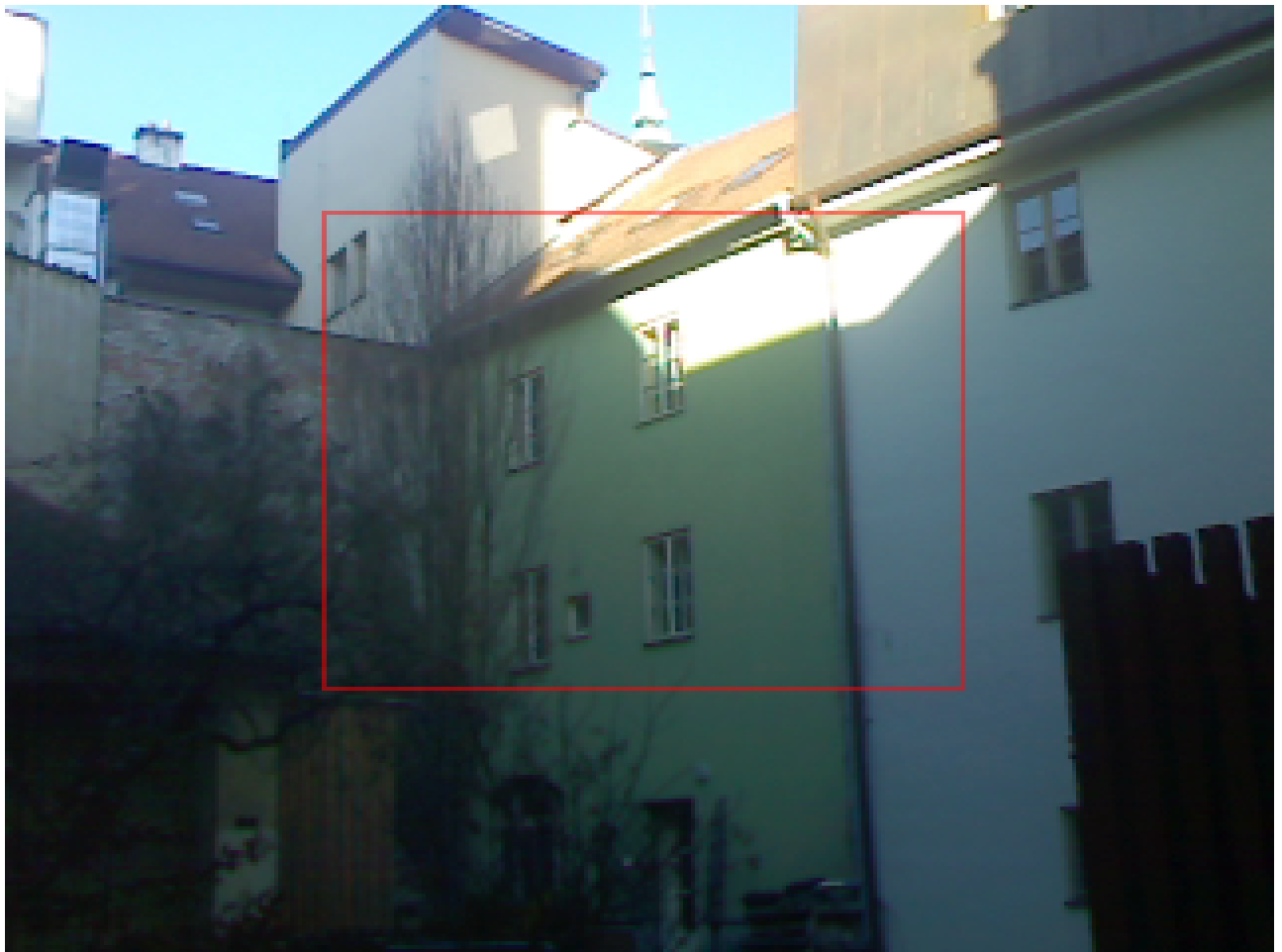
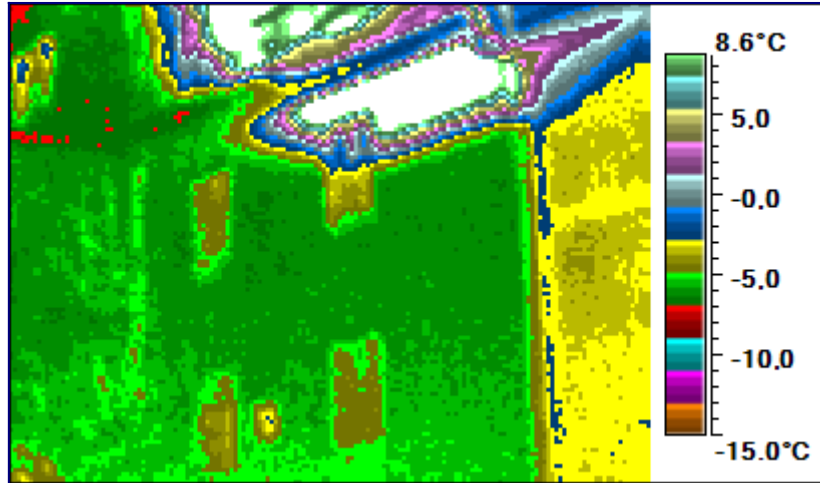
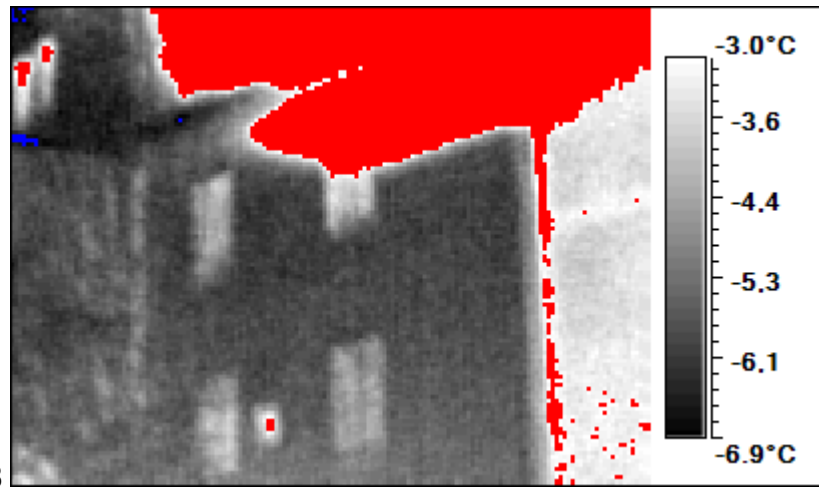




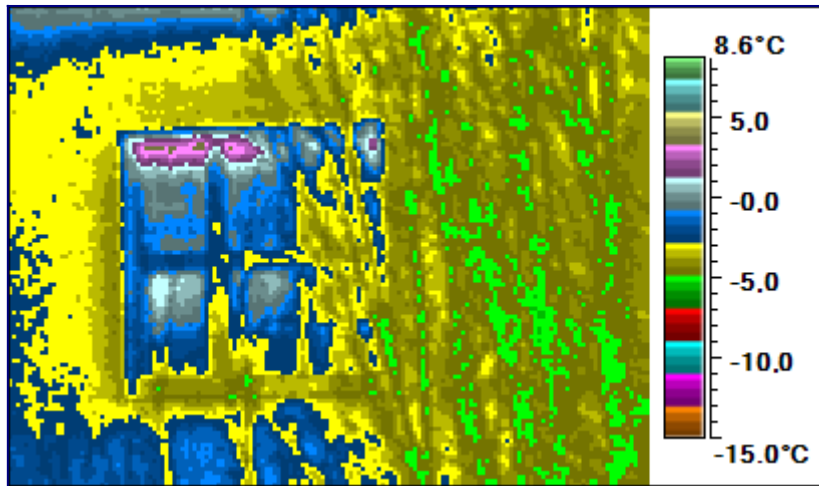
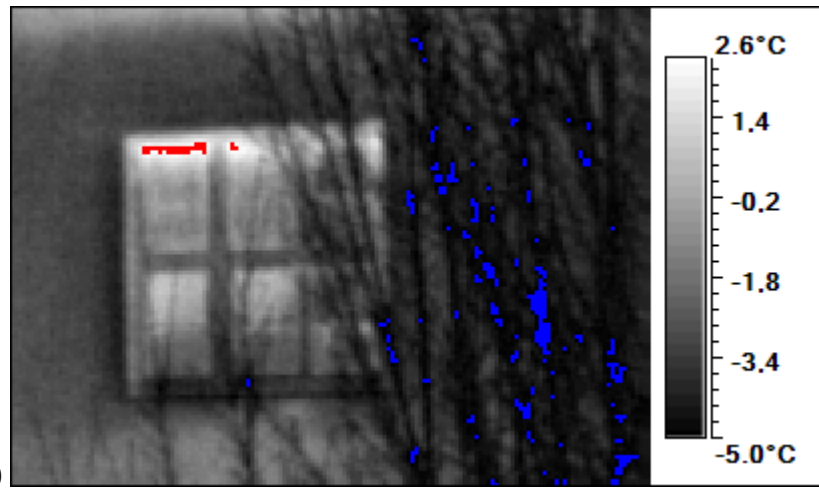
40 -7.4 -0.6



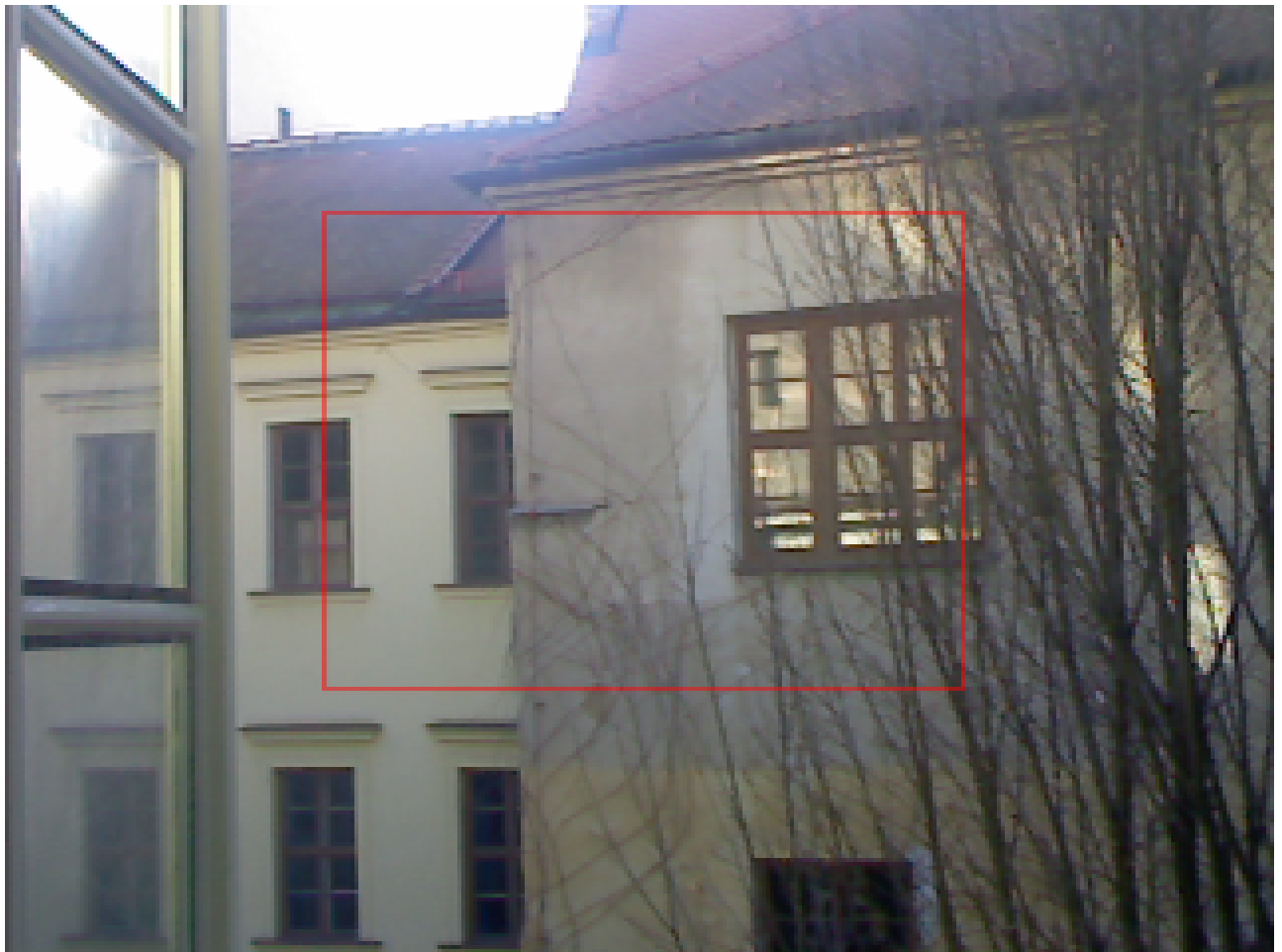
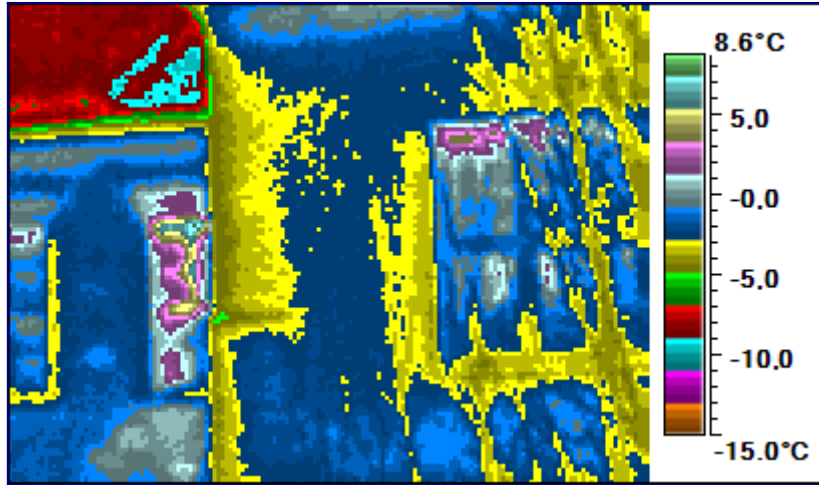
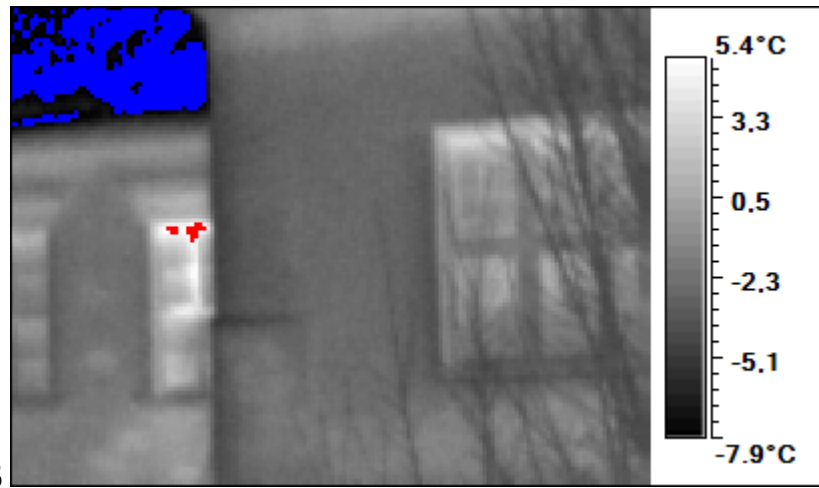
41 -7.4 16.8

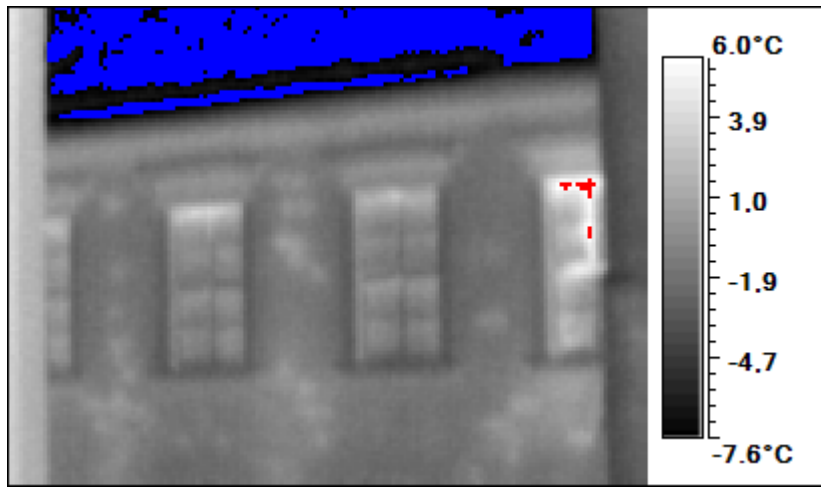


46 -5.4 2.9

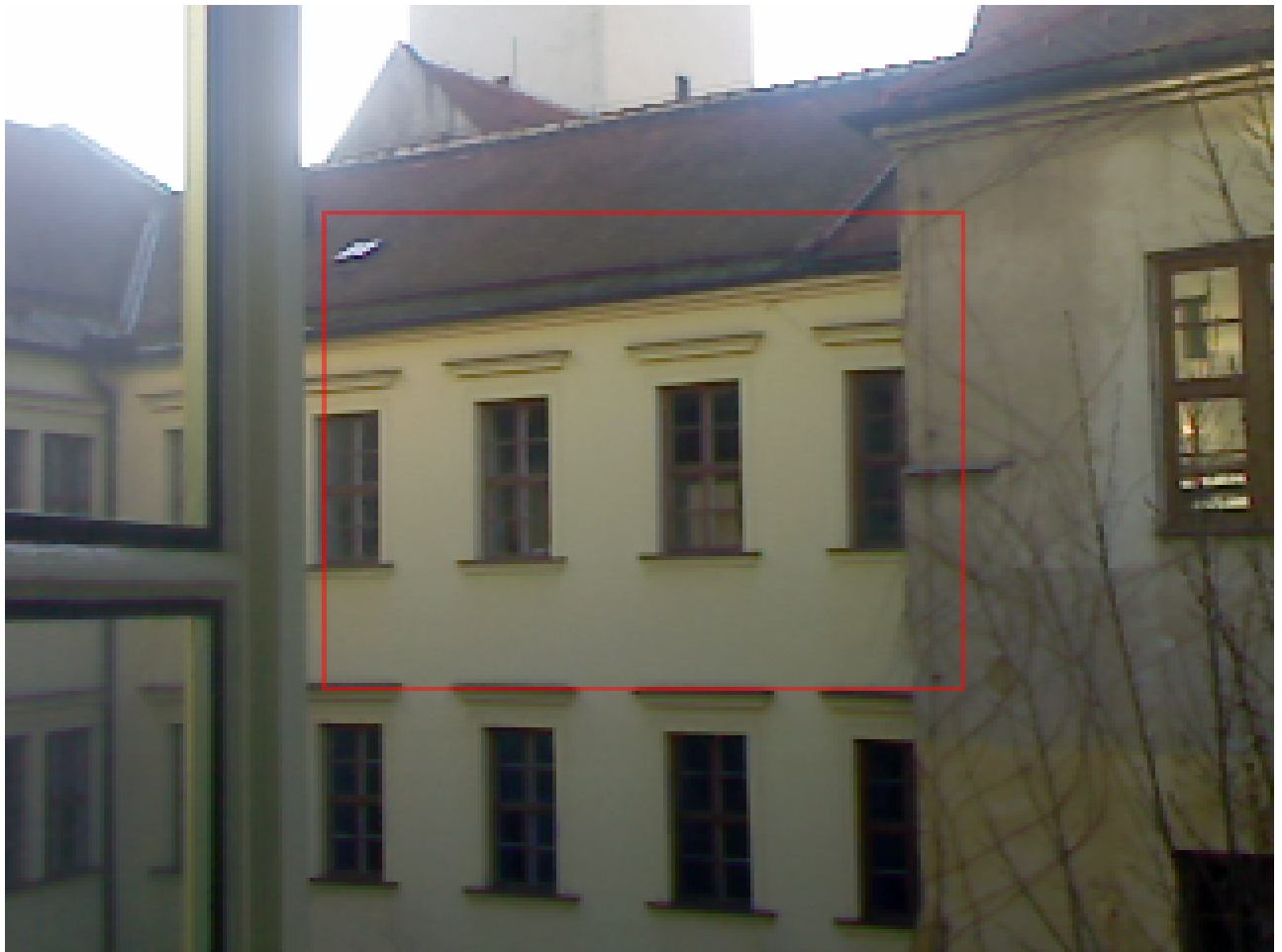
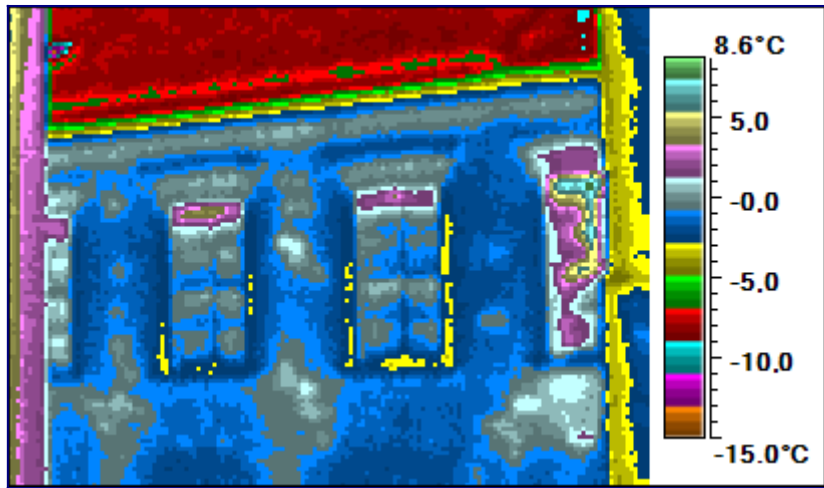


47 -9.6 6.6

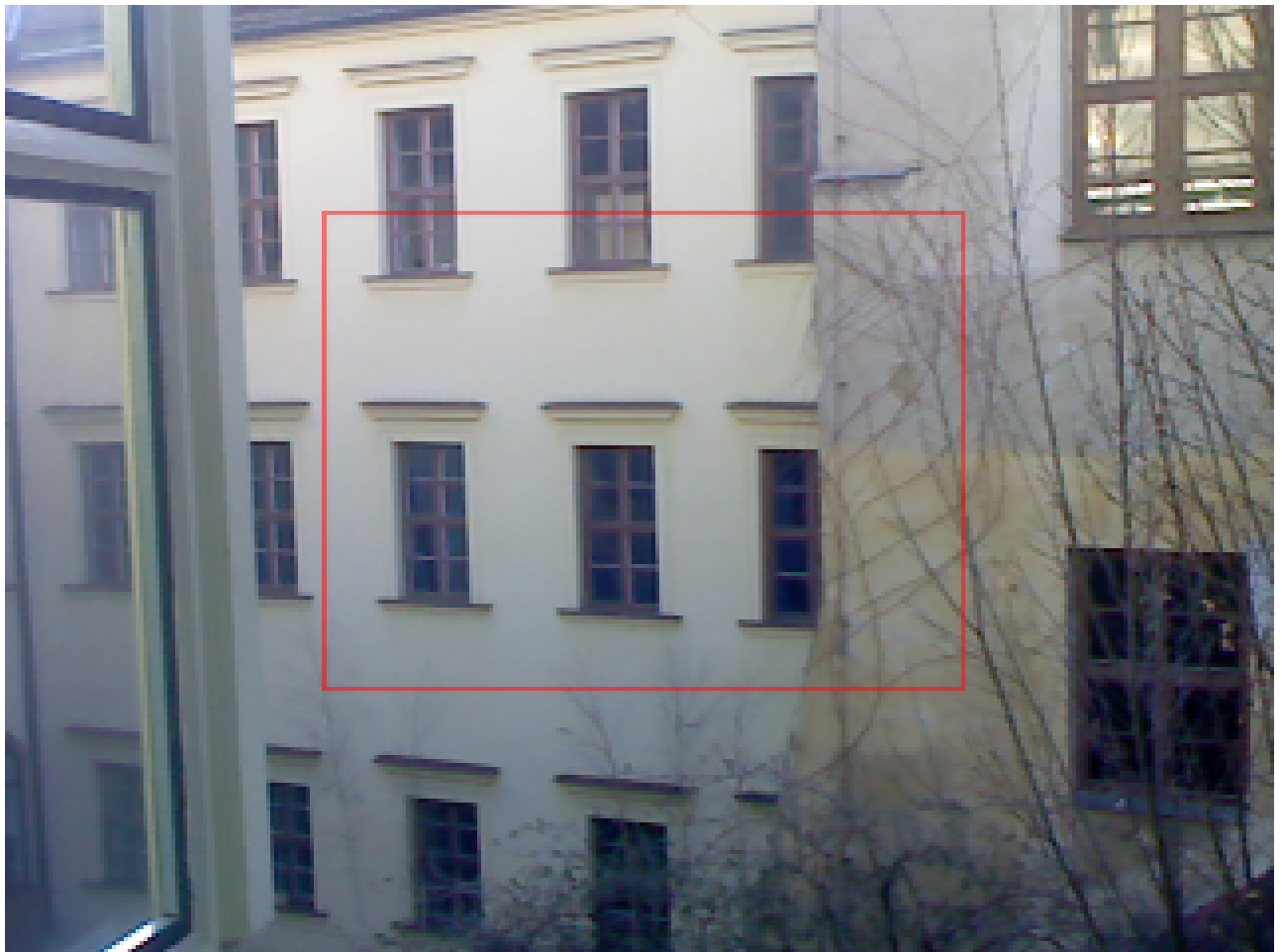
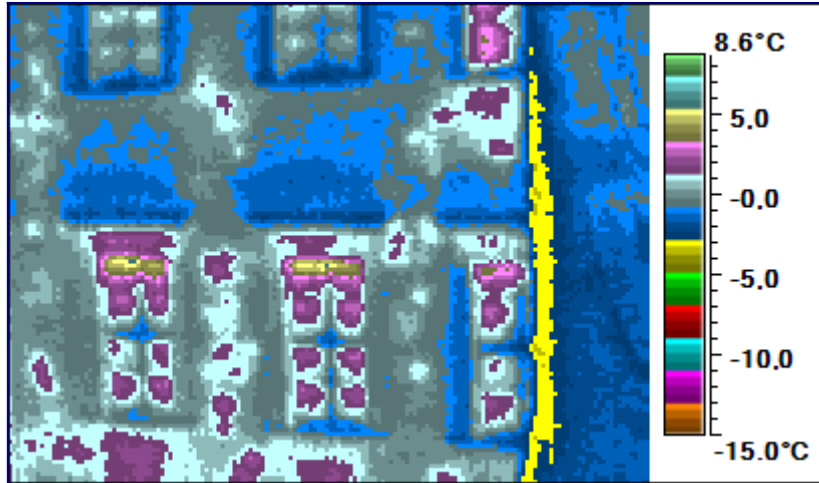




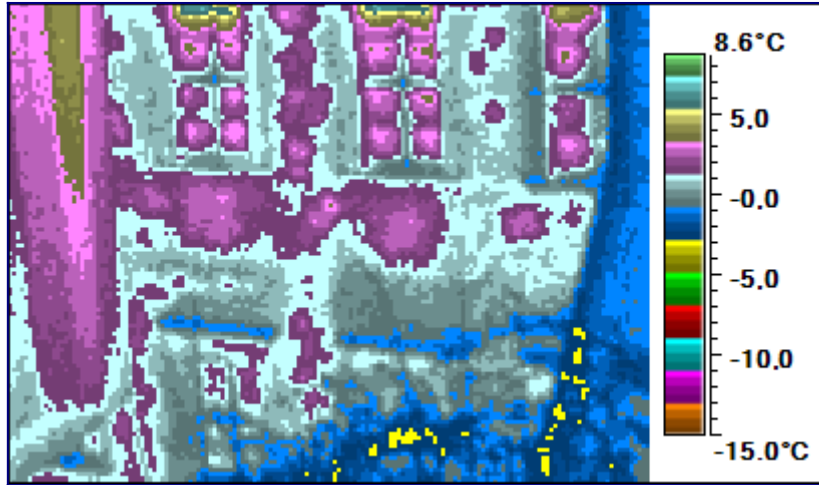
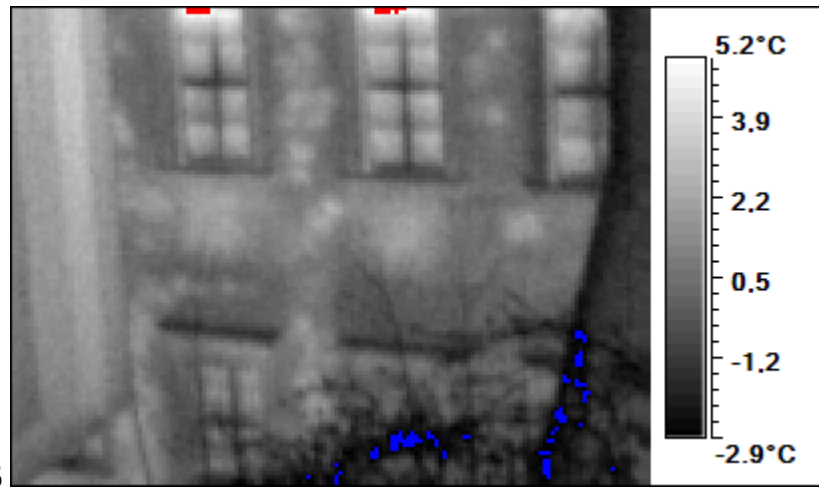
48 -13.5 6.9



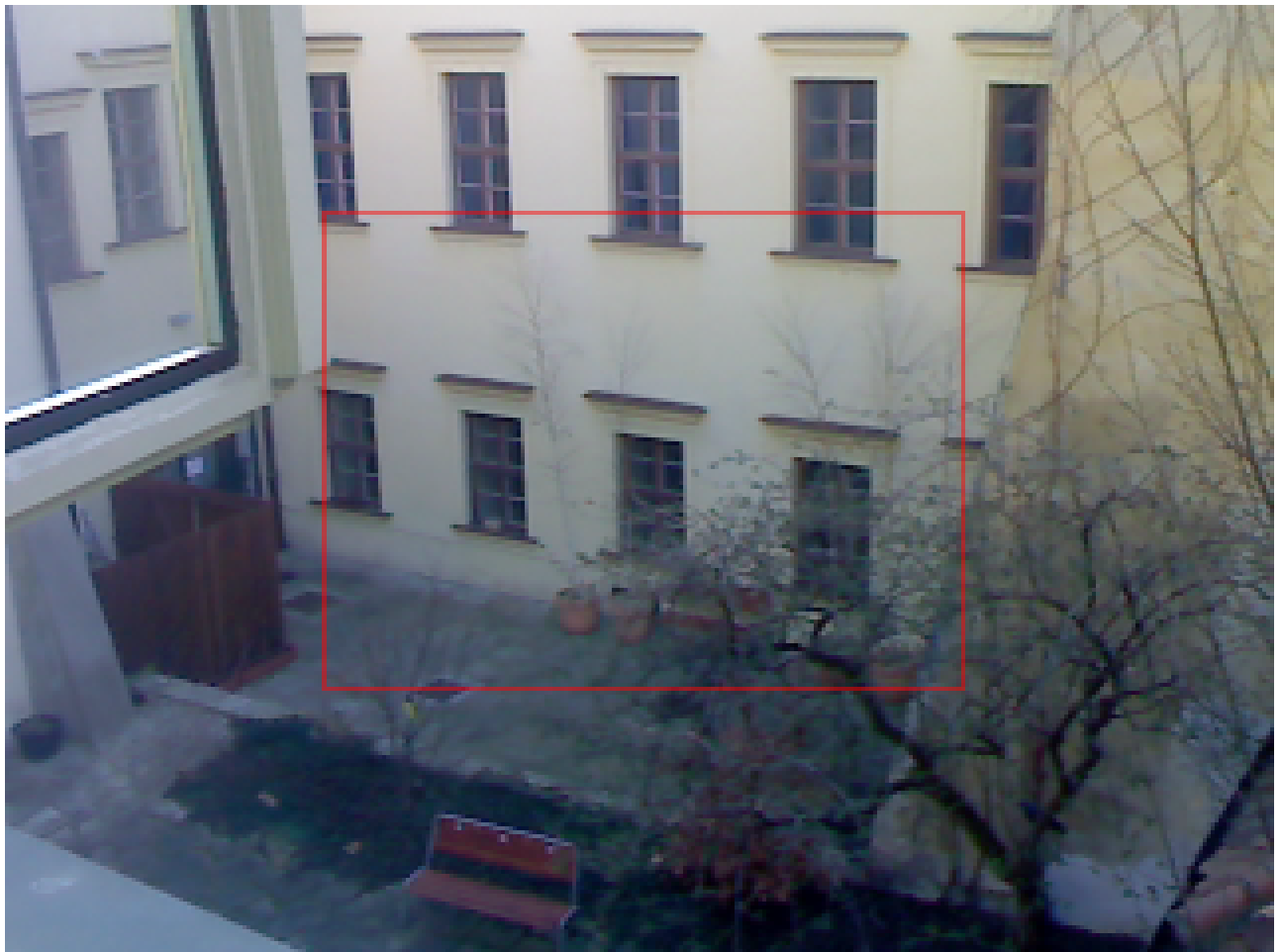
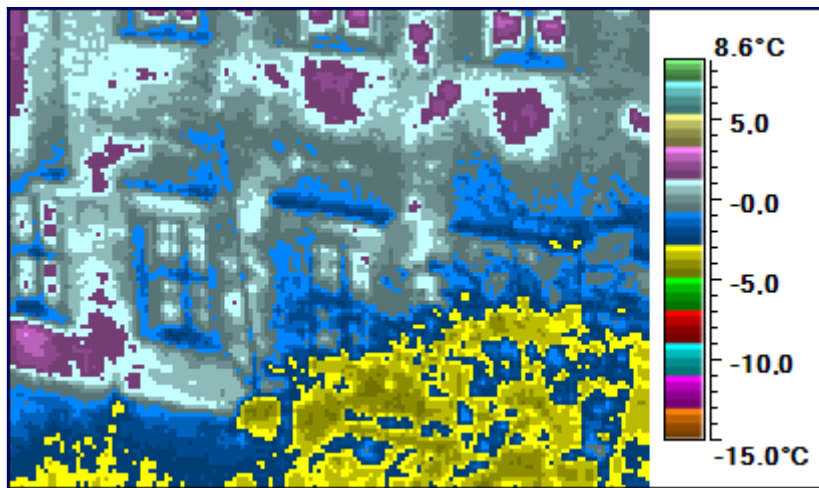
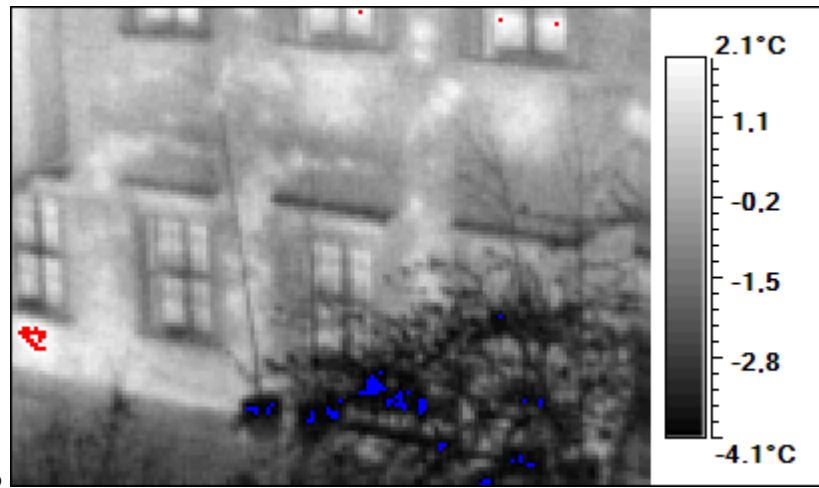
49 -3.5 4.7



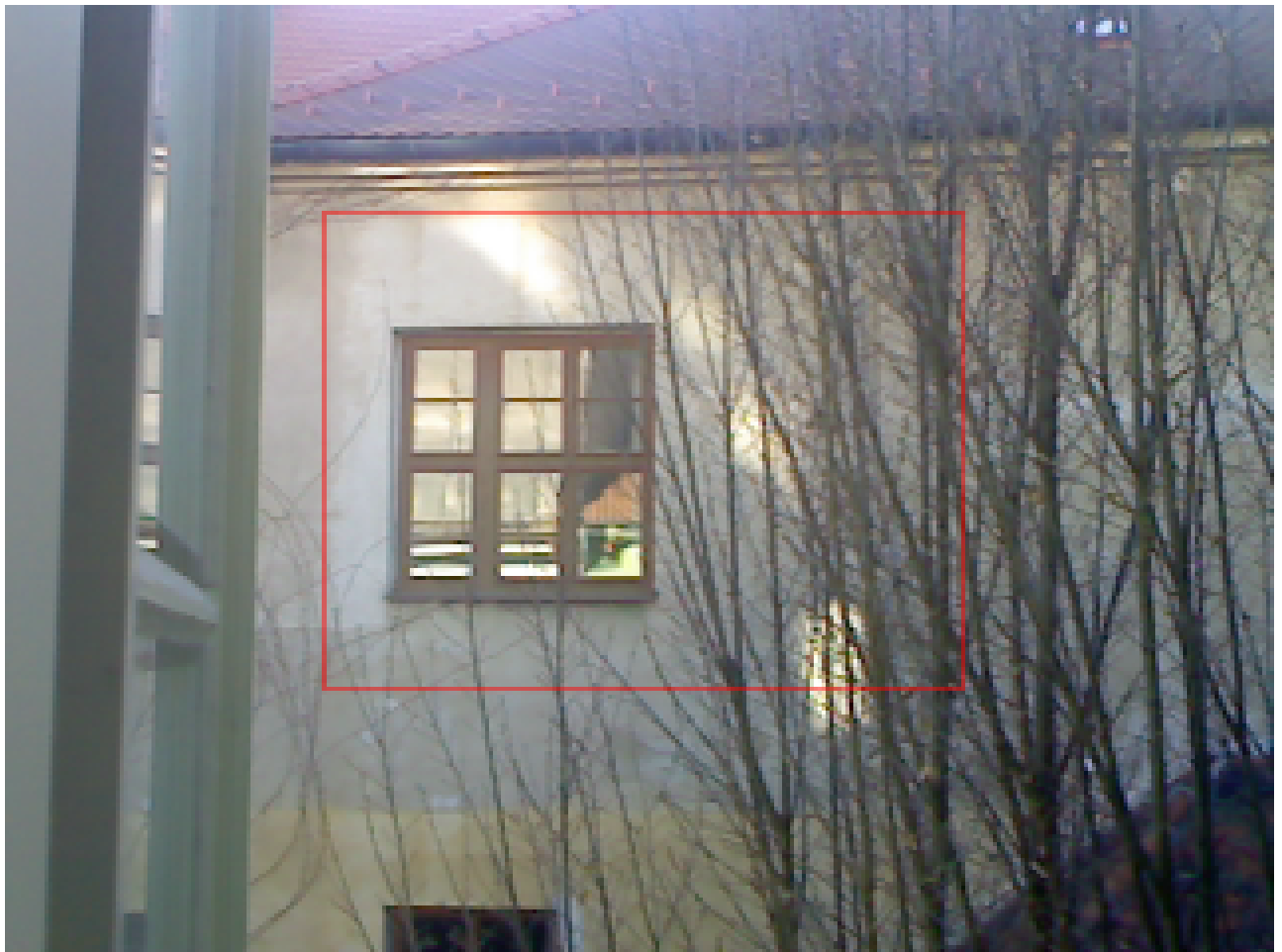
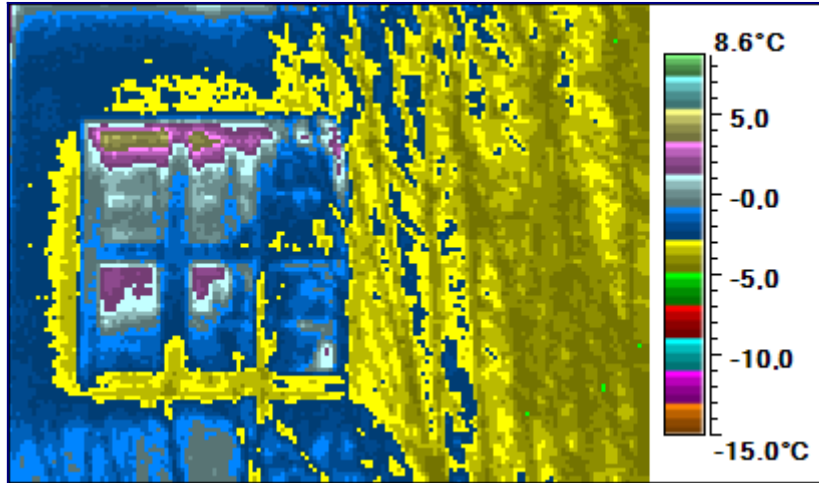
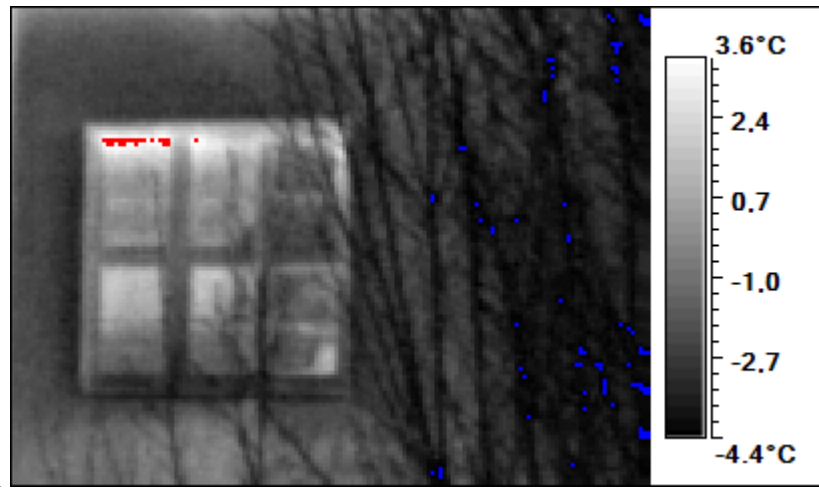
50 -3.2 5.6



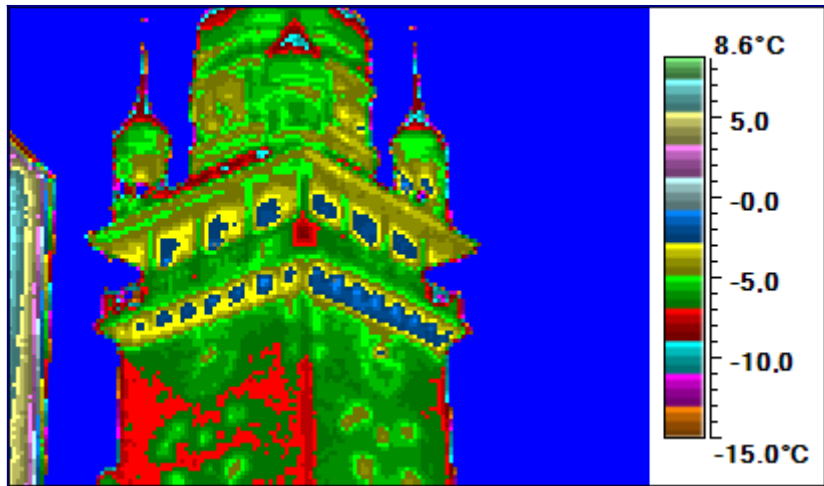
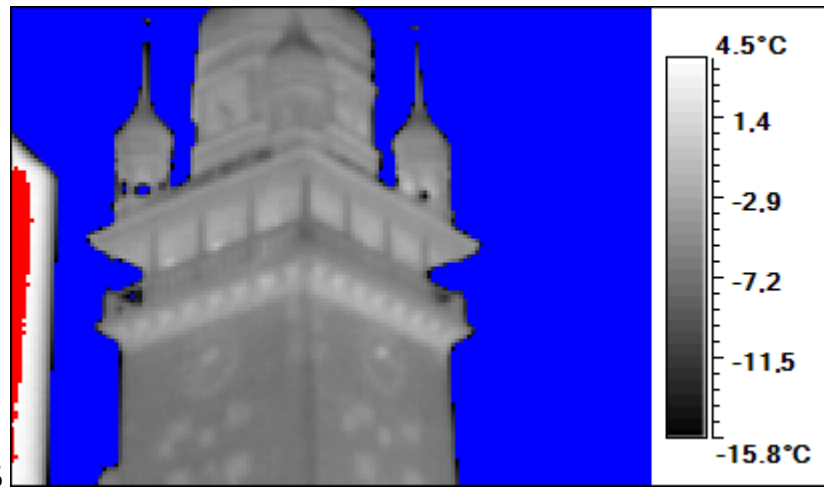
51 -4.3 2.5



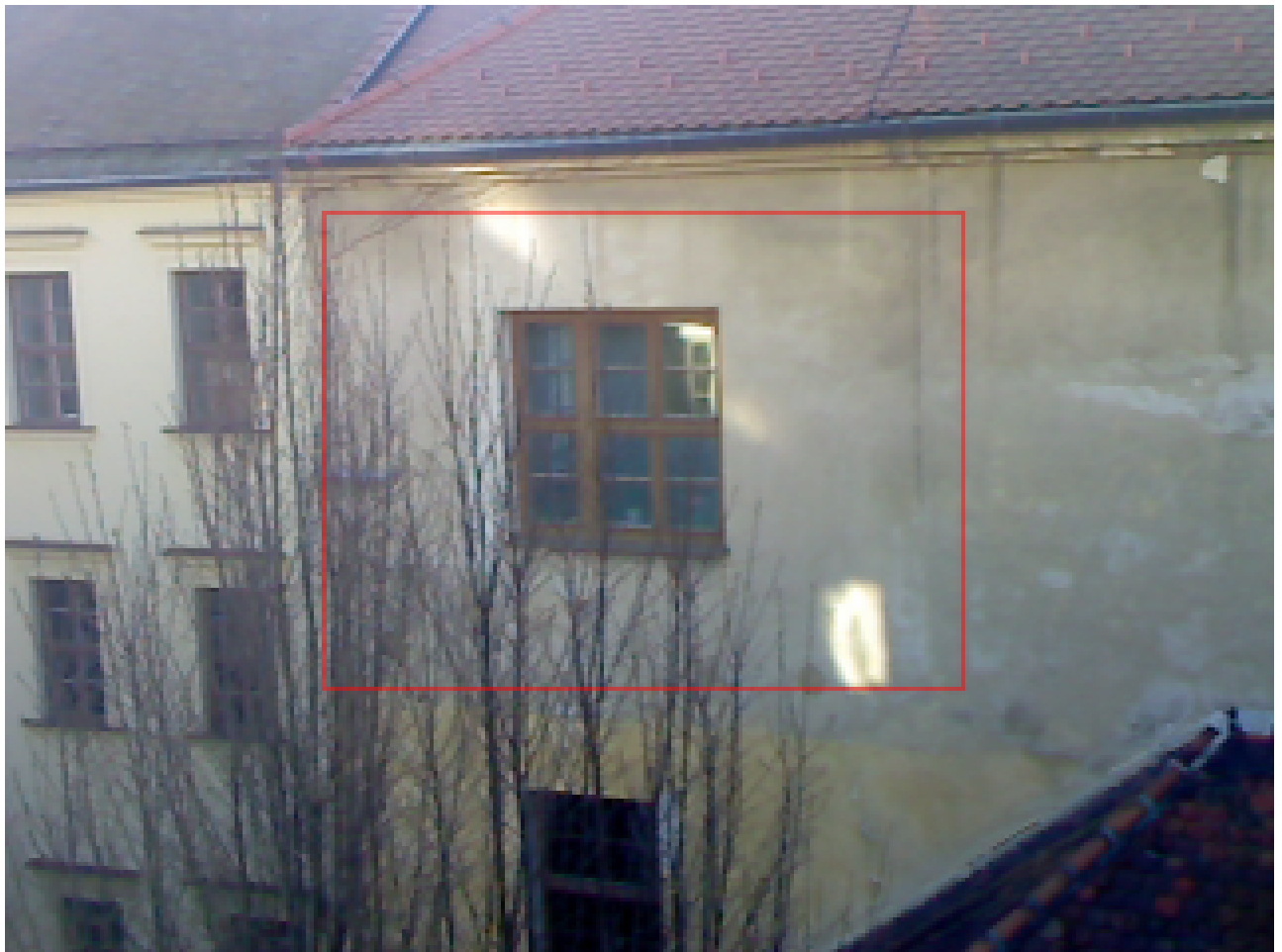
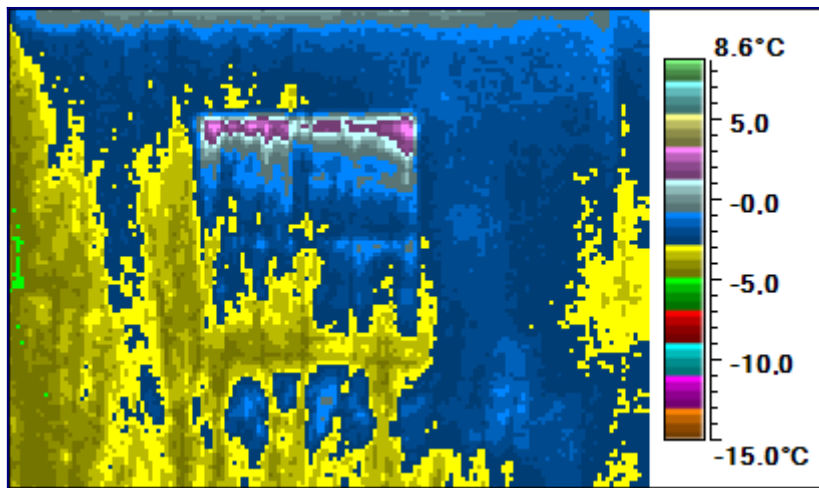
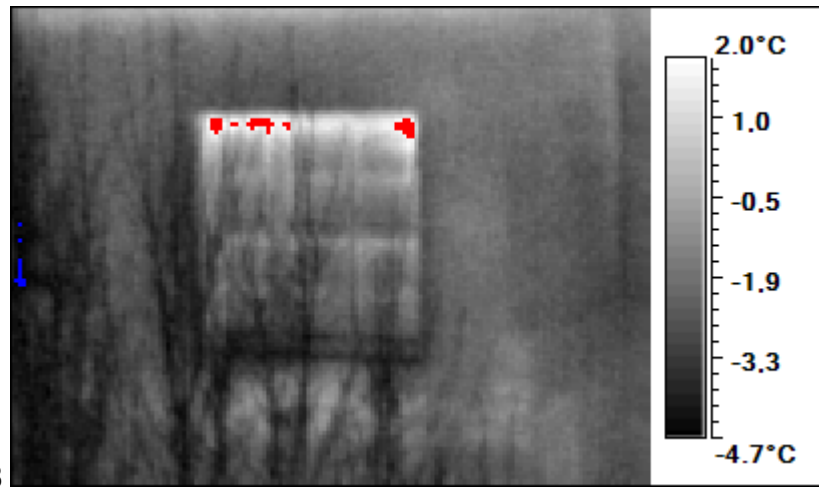
52 -4.7 4.1



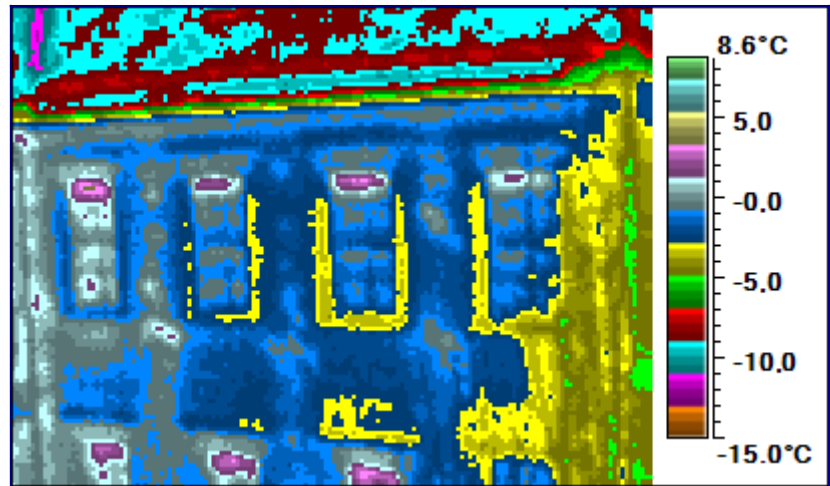
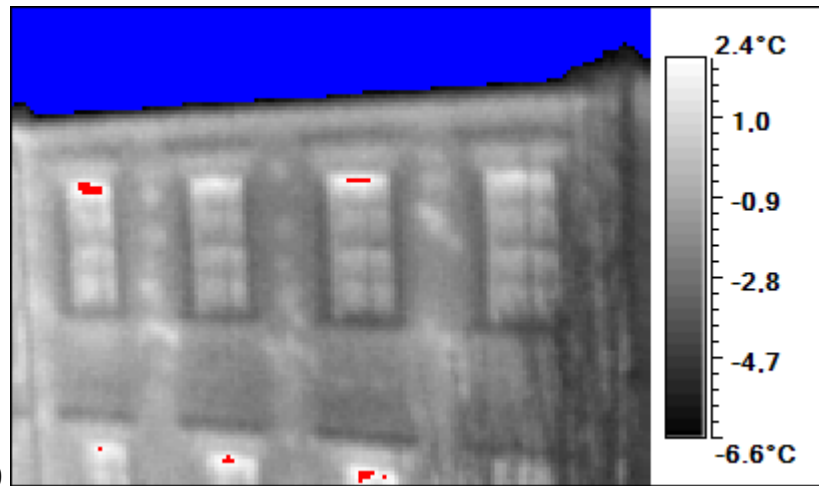
53 nebe, 6.5



54 -4.8 2.8



55 -11.2 3.0



56 -7.7 6.8

