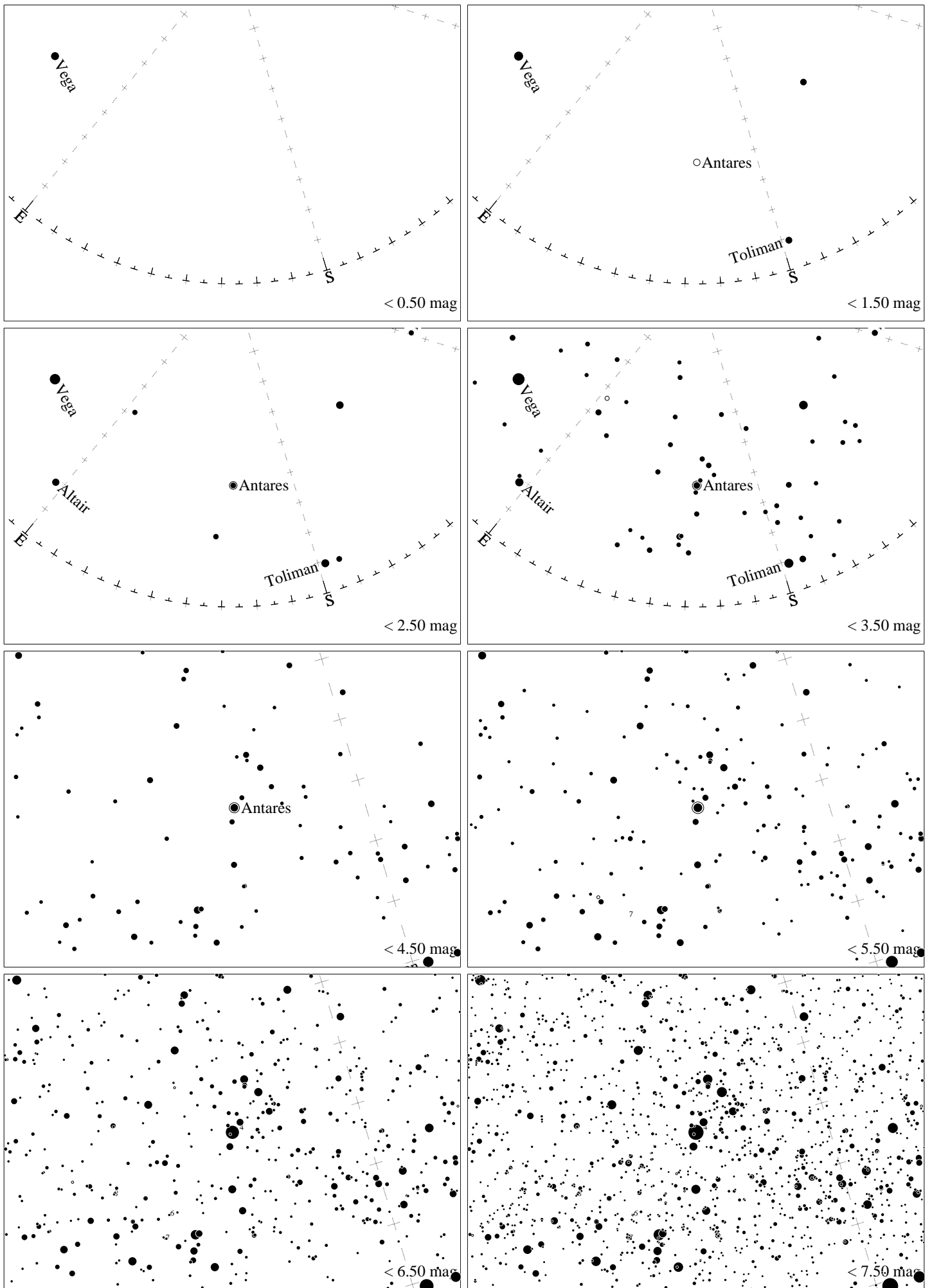
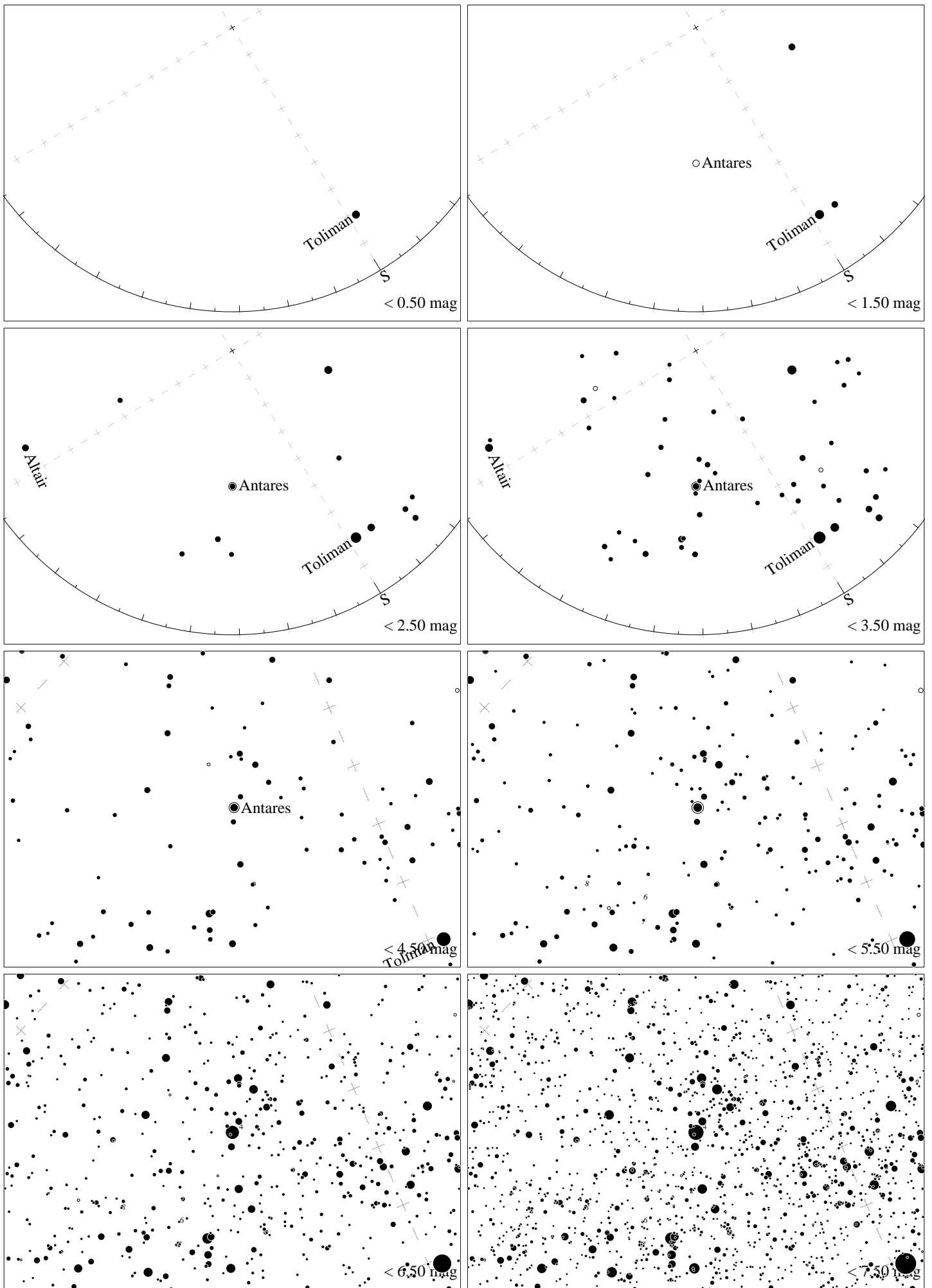


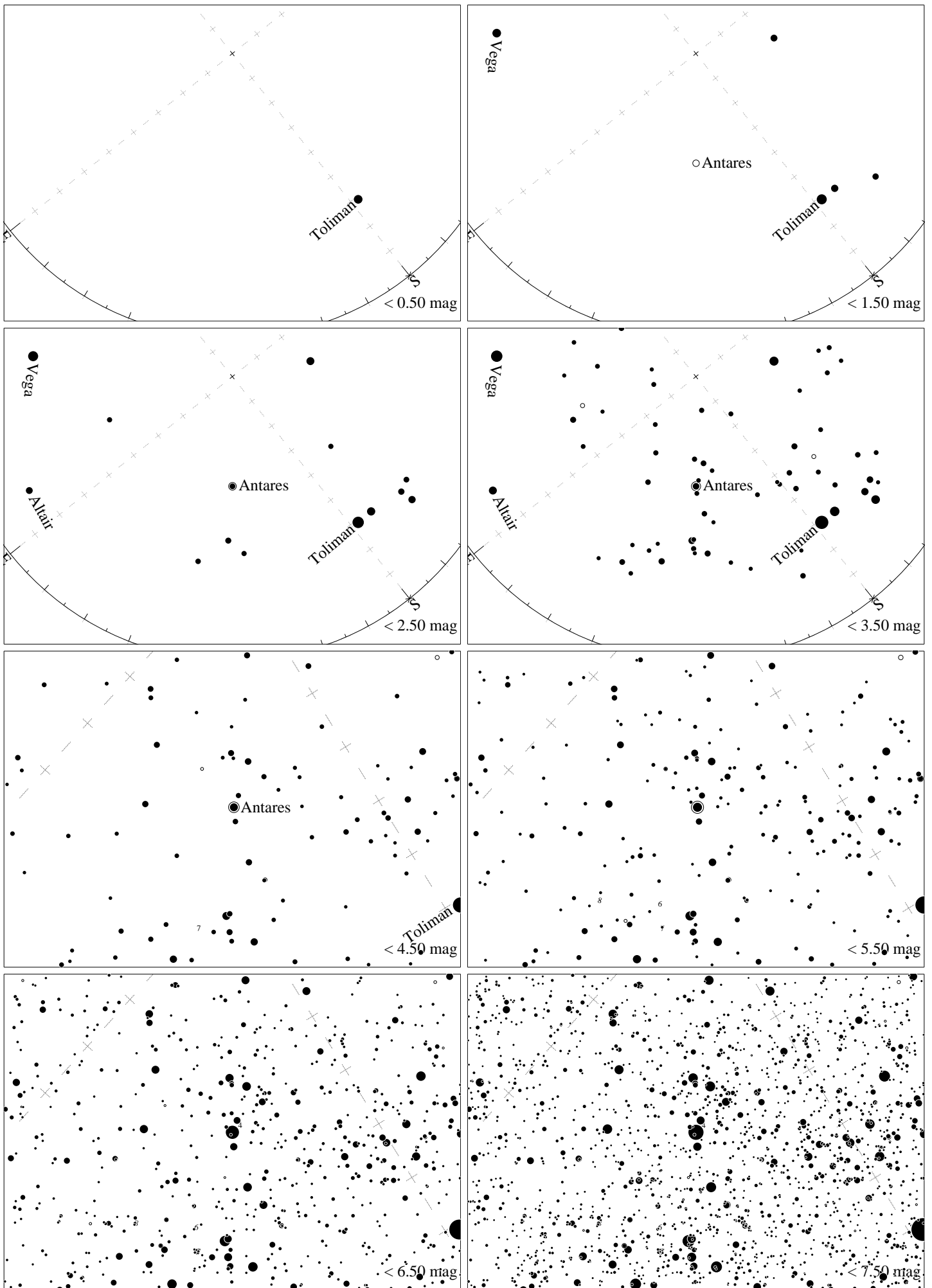
Maps for Globe at Night latitude  $30^\circ$ , 2025-06-20, 21 h local time (Sun at  $-21^\circ$ ), transparent air. Lines from N(E,S,W) to zenith shown (crosses each  $10^\circ$ ). Centered on Antares ( $\alpha$  Scorpii), which is  $24^\circ$  to the left from S, at  $29^\circ$  height. Detailed maps  $50^\circ$  vertically, the first four maps  $100^\circ$ . *Jan Hollan, CzechGlobe*



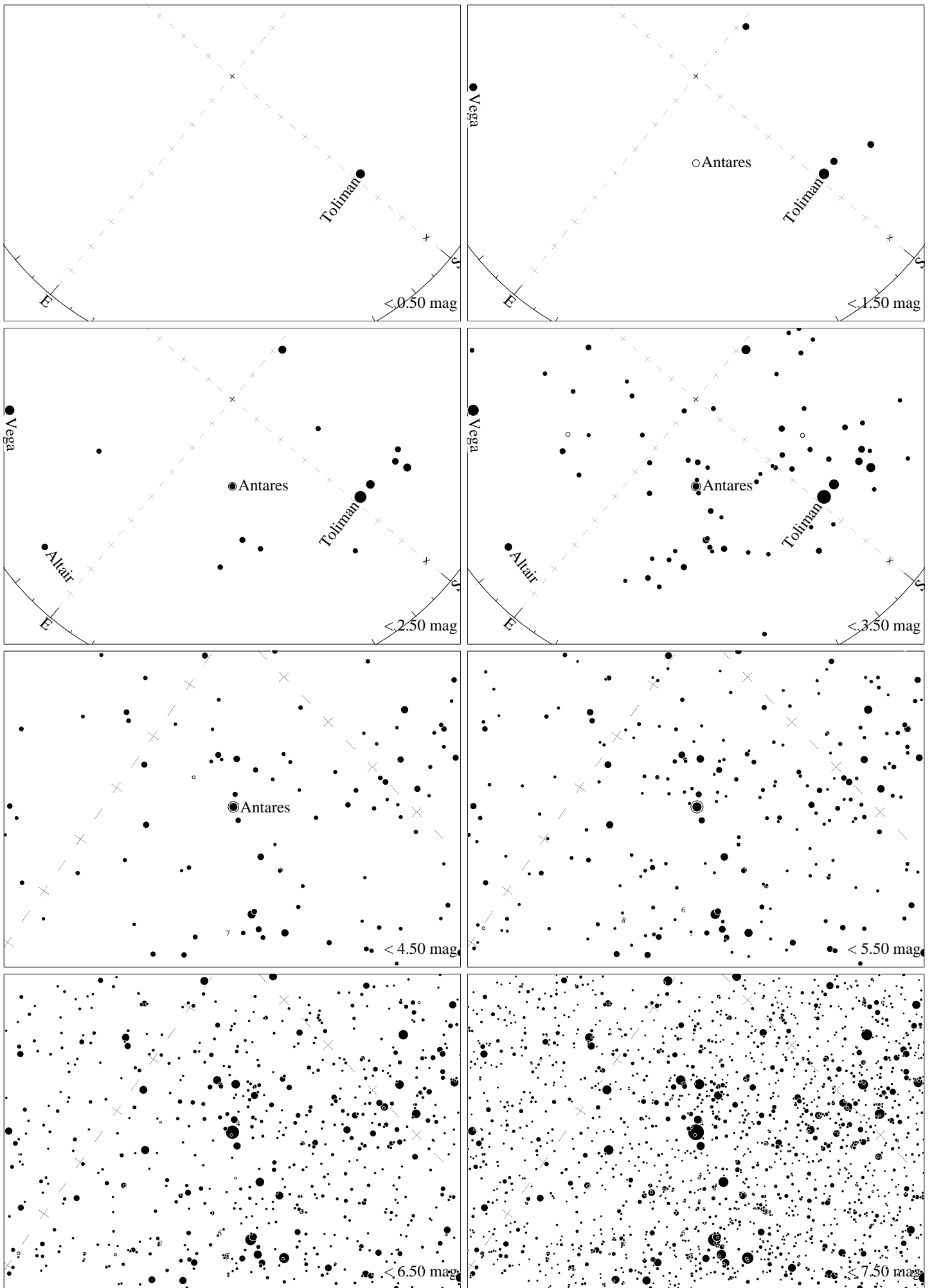
Maps for Globe at Night latitude  $20^\circ$ , 2025-06-20, 21 h local time (Sun at  $-28^\circ$ ), transparent air. Lines from N(E,S,W) to zenith shown (crosses each  $10^\circ$ ). Centered on Antares ( $\alpha$  Scorpii), which is  $27^\circ$  to the left from S, at  $38^\circ$  height. Detailed maps  $50^\circ$  vertically, the first four maps  $100^\circ$ . *Jan Hollan, CzechGlobe*



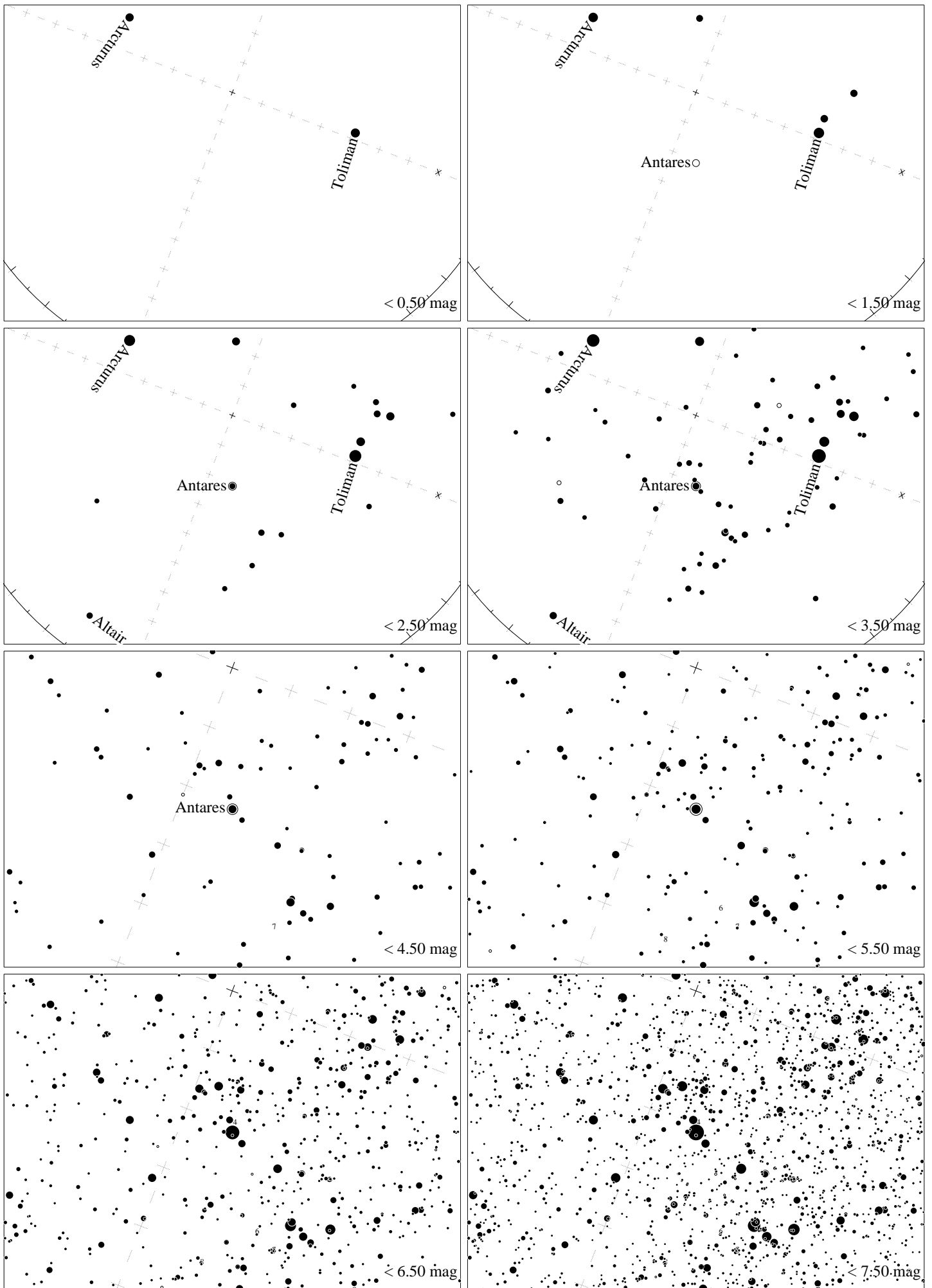
Maps for Globe at Night latitude  $10^\circ$ , 2025-06-20, 21 h local time (Sun at  $-34^\circ$ ), transparent air. Lines from N(E,S,W) to zenith shown (crosses each  $10^\circ$ ). Centered on Antares ( $\alpha$  Scorpii), which is  $31^\circ$  to the left from S, at  $47^\circ$  height. Detailed maps  $50^\circ$  vertically, the first four maps  $100^\circ$ . *Jan Hollan, CzechGlobe*



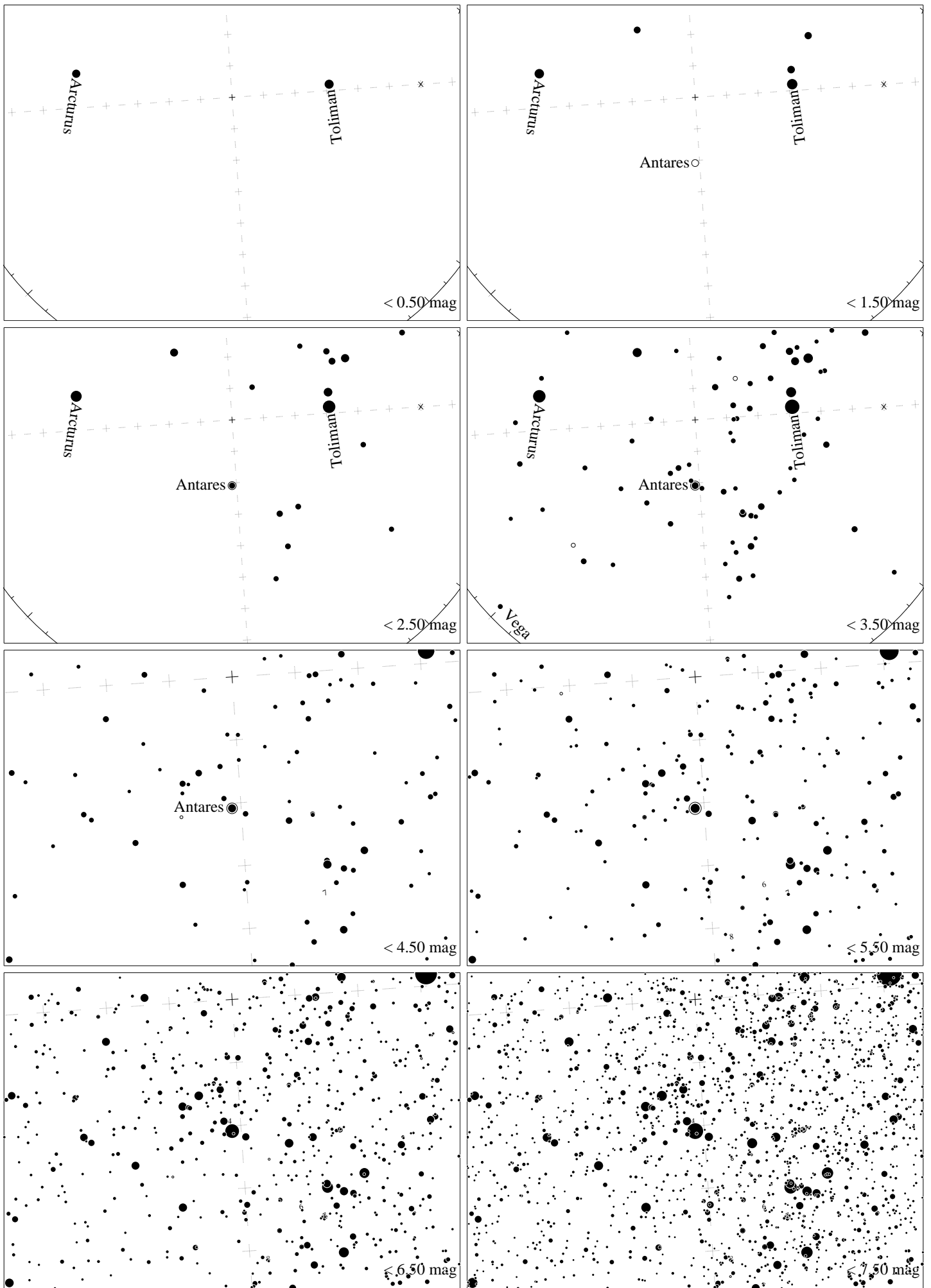
Maps for Globe at Night latitude  $0^\circ$ , 2025-06-20, 21 h local time (Sun at  $-40^\circ$ ), transparent air. Lines from N(E,S,W) to zenith shown (crosses each  $10^\circ$ ). Centered on Antares ( $\alpha$  Scorpii), which is  $39^\circ$  to the left from S, at  $55^\circ$  height. Detailed maps  $50^\circ$  vertically, the first four maps  $100^\circ$ . *Jan Hollan, CzechGlobe*



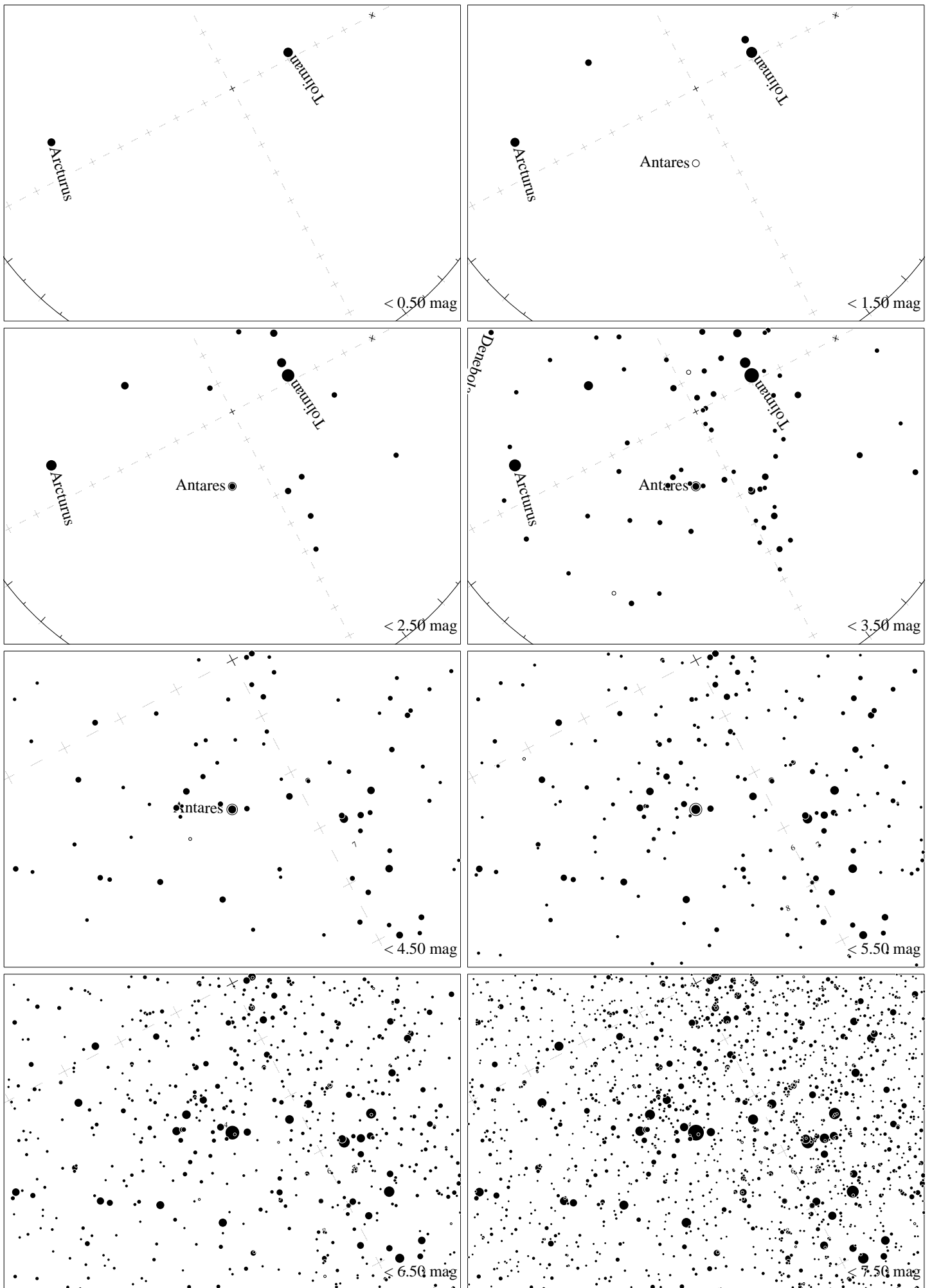
Maps for Globe at Night latitude  $-10^\circ$ , 2025-06-20, 21 h local time (Sun at  $-45^\circ$ ), transparent air. Lines from N(E,S,W) to zenith shown (crosses each  $10^\circ$ ). Centered on Antares ( $\alpha$  Scorpii), which is  $50^\circ$  to the left from S, at  $62^\circ$  height. Detailed maps  $50^\circ$  vertically, the first four maps  $100^\circ$ . *Jan Hollan, CzechGlobe*



Maps for Globe at Night latitude  $-20^\circ$ , 2025-06-20, 21 h local time (Sun at  $-48^\circ$ ), transparent air. Lines from N(E,S,W) to zenith shown (crosses each  $10^\circ$ ). Centered on Antares ( $\alpha$  Scorpii), which is  $69^\circ$  to the left from S, at  $68^\circ$  height. Detailed maps  $50^\circ$  vertically, the first four maps  $100^\circ$ . *Jan Hollan, CzechGlobe*

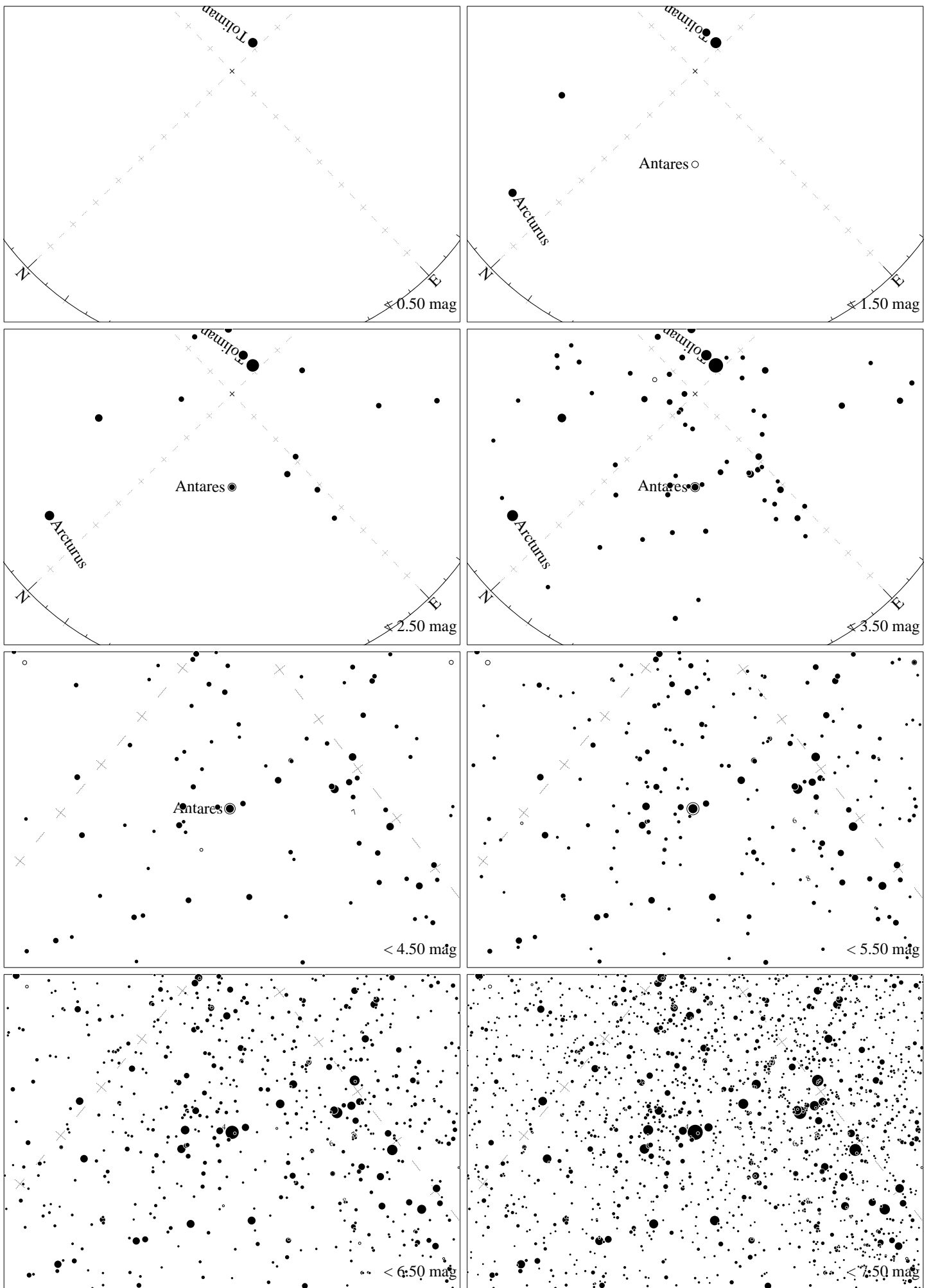


Maps for Globe at Night latitude  $-30^\circ$ , 2025-06-20, 21 h local time (Sun at  $-49^\circ$ ), transparent air. Lines from N(E,S,W) to zenith shown (crosses each  $10^\circ$ ). Centered on Antares ( $\alpha$  Scorpii), which is  $86^\circ$  to the right from N, at  $69^\circ$  height. Detailed maps  $50^\circ$  vertically, the first four maps  $100^\circ$ . *Jan Hollan, CzechGlobe*



Maps for Globe at Night latitude  $-40^\circ$ , 2025-06-20, 21 h local time (Sun at  $-48^\circ$ ), transparent air. Lines from N(E,S,W) to zenith shown (crosses each  $10^\circ$ ). Centered on Antares ( $\alpha$  Scorpii), which is  $62^\circ$  to the right from N, at  $66^\circ$  height. Detailed maps  $50^\circ$  vertically, the first four maps  $100^\circ$ . *Jan Hollan, CzechGlobe*





Maps for Globe at Night latitude  $-50^\circ$ , 2025-06-20, 21 h local time (Sun at  $-46^\circ$ ), transparent air. Lines from N(E,S,W) to zenith shown (crosses each  $10^\circ$ ). Centered on Antares ( $\alpha$  Scorpii), which is  $46^\circ$  to the right from N, at  $60^\circ$  height. Detailed maps  $50^\circ$  vertically, the first four maps  $100^\circ$ . *Jan Hollan, CzechGlobe*