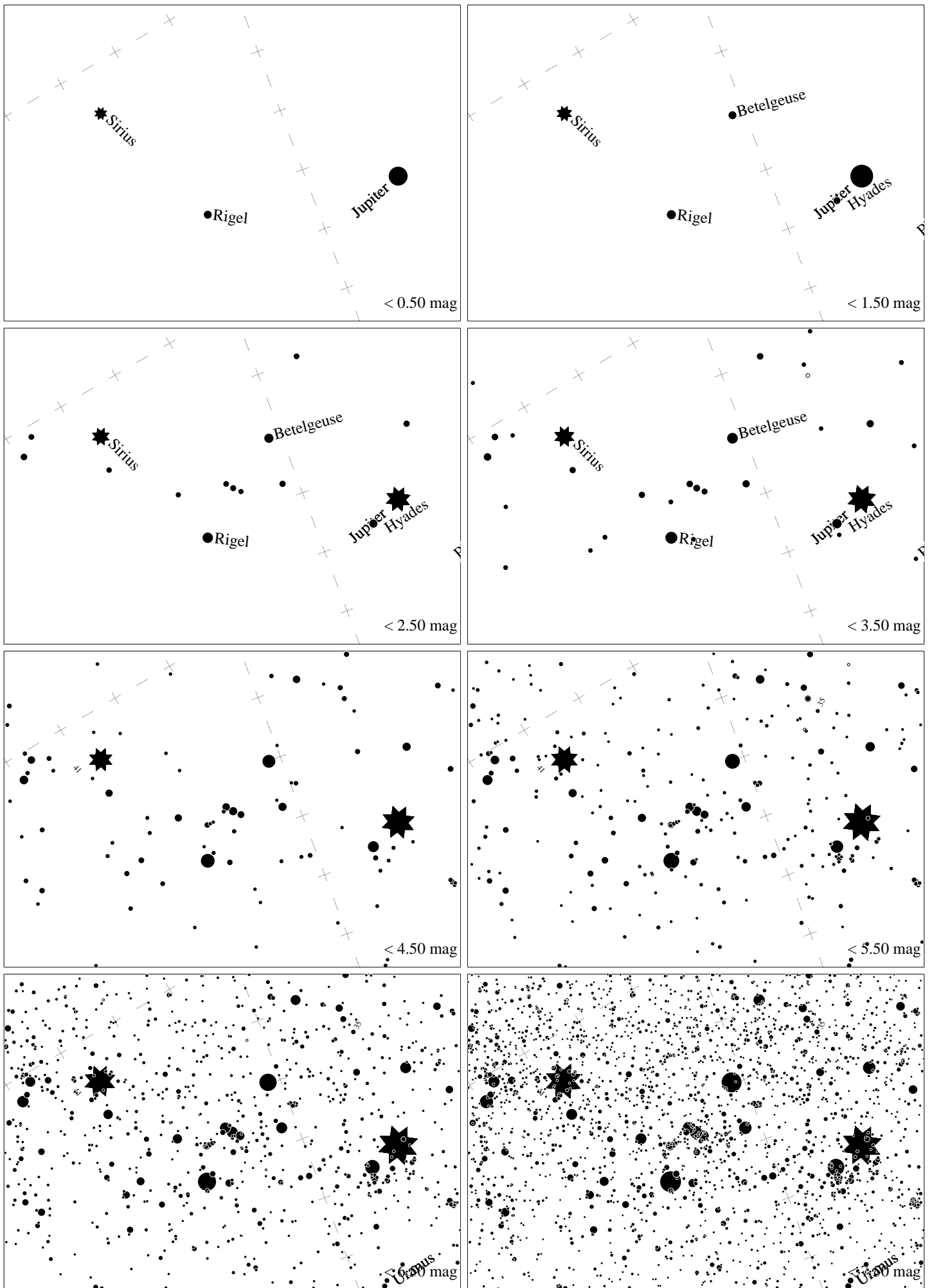
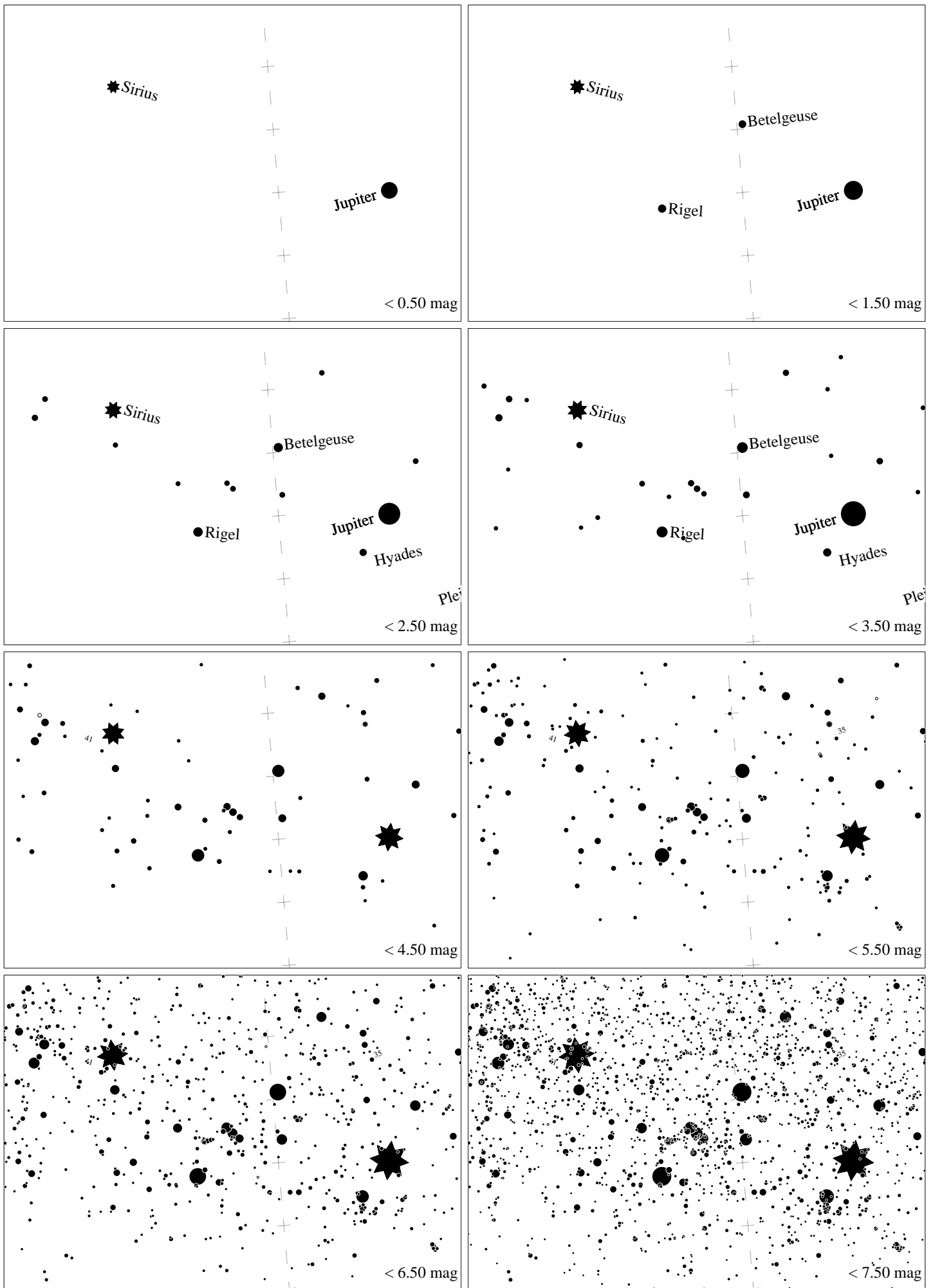


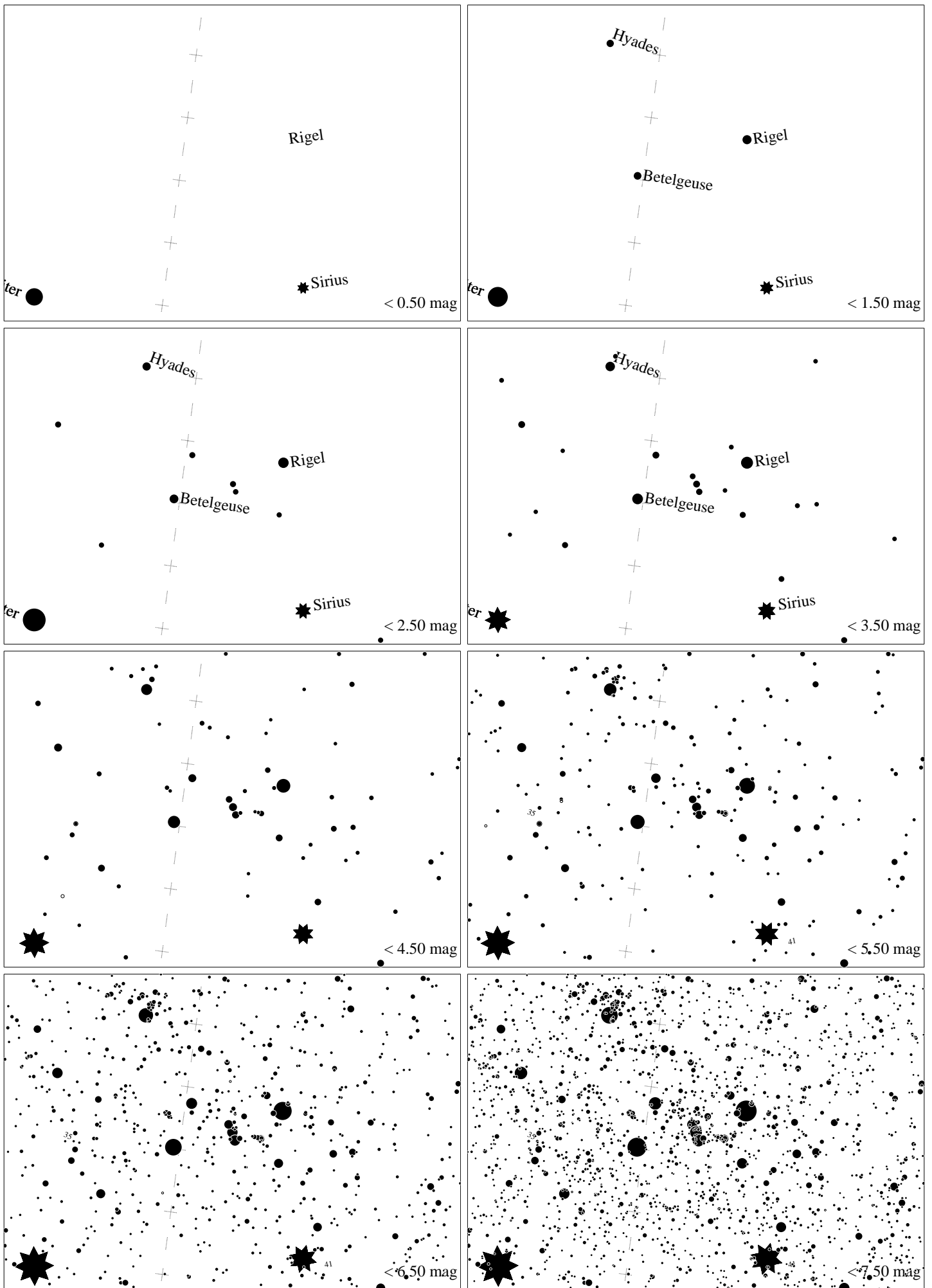
Maps for Globe at Night at latitude 10° , 2025-01-25, 21 h local time (Sun at -43°), transparent air. Lines from N(E,S,W) to zenith shown (crosses each 10°). Orion's belt is 20° to the left from S, at 78° height. Star clusters M 41 and M35 marked when appropriate. Map vertical size is 50° . *Jan Hollan maps, CzechGlobe*



Maps for Globe at Night at latitude 10° , 2025-02-23, 21:00 local time (Sun at -42°), transparent air. Lines from N(E,S,W) to zenith shown (crosses each 10°). Orion's belt is 67° to the right from S, at 63° height. Star clusters M 41 and M35 marked when appropriate. Map vertical size is 50° . *Jan Hollan maps, CzechGlobe*



Maps for Globe at Night at latitude 10°, 2025-03-25, 21:00 local time (Sun at -42°), transparent air. Lines from N(E,S,W) to zenith shown (crosses each 10°). Orion's belt is 81° to the right from S, at 35° height. Star clusters M 41 and M35 marked when appropriate. Map vertical size is 50°. *Jan Hollan maps, CzechGlobe*



Maps for Globe at Night at latitude 10° , 2025-12-14, 21 h local time (Sun at -46°), transparent air. Lines from N(E,S,W) to zenith shown (crosses each 10°). Orion's belt is 79° to the left from S, at 43° height. Star clusters M 41 and M35 marked when appropriate. Map vertical size is 50° . *Jan Hollan maps, CzechGlobe*