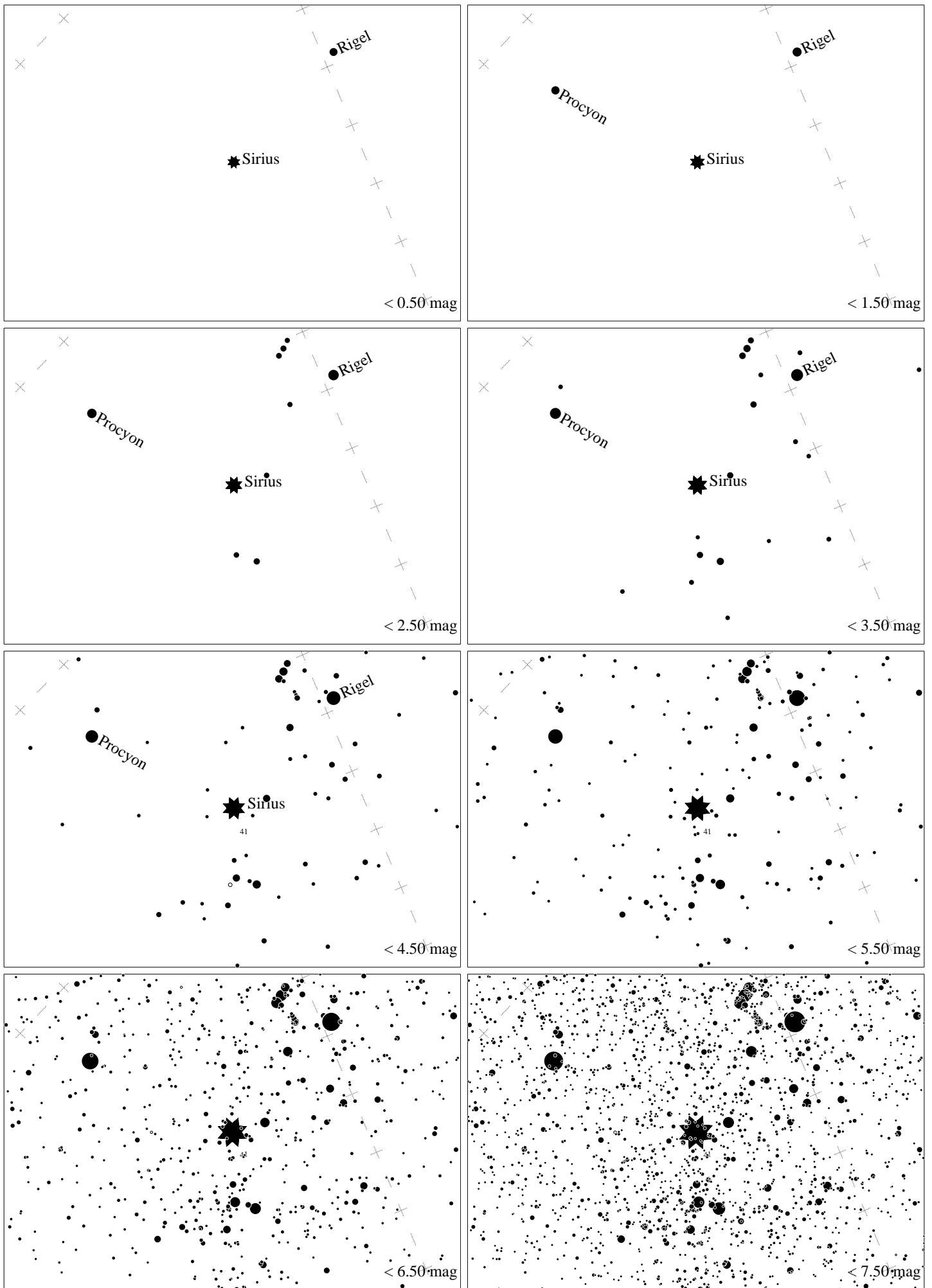
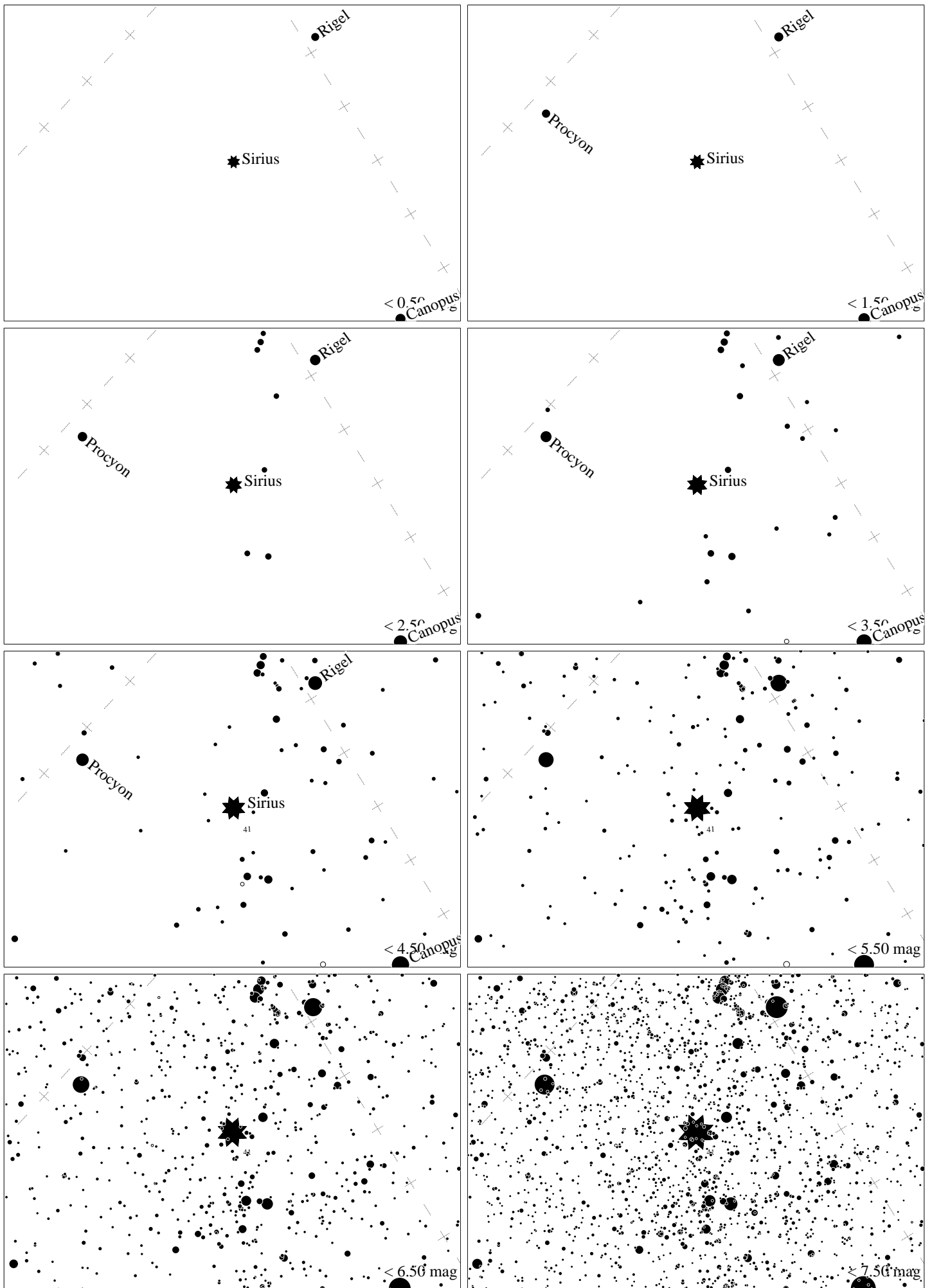


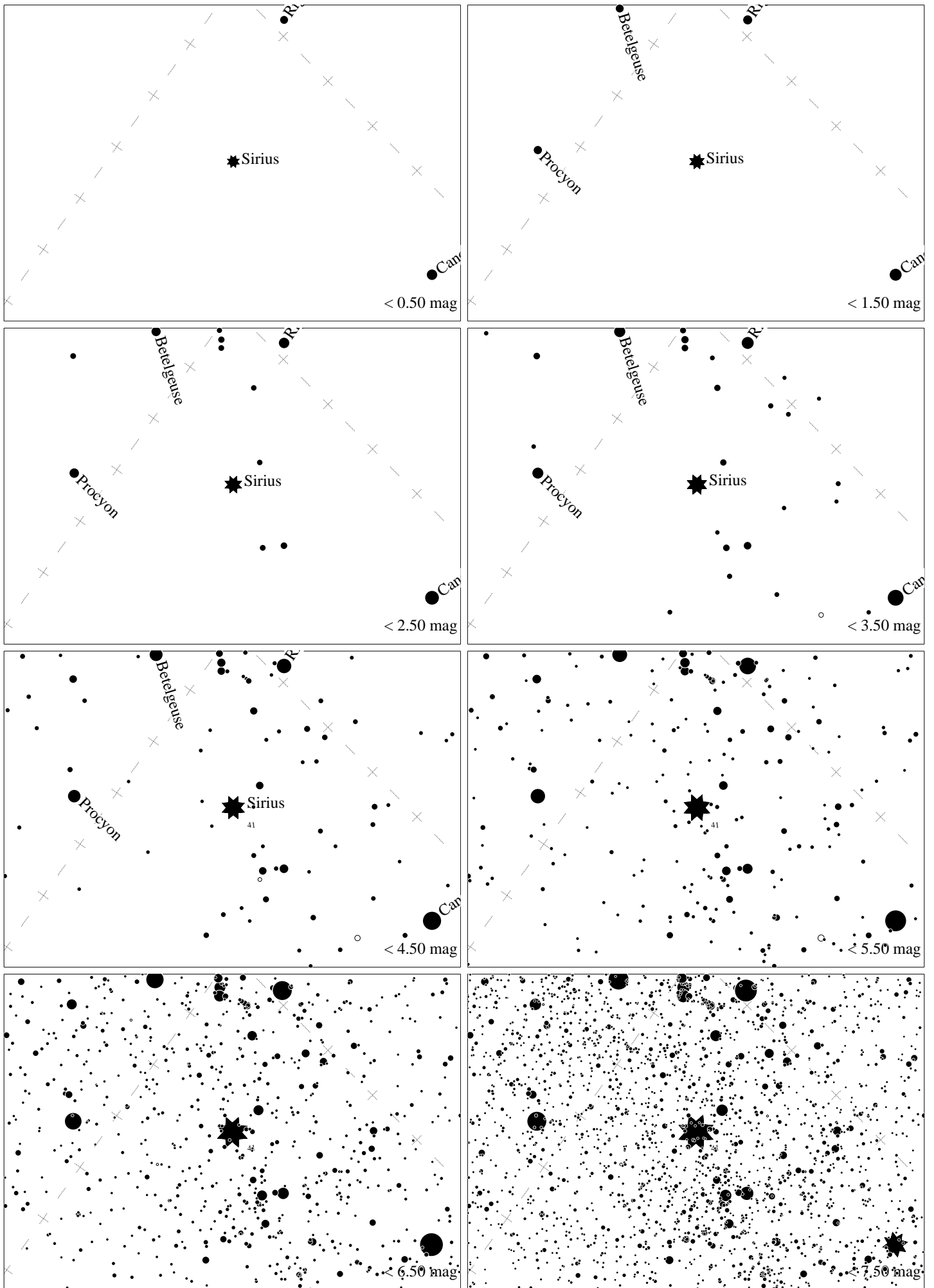
Maps for Globe at Night at latitude 30° , 2025-01-25, 21:00 local time (Sun at -45°), transparent air. Lines from N(E,S,W) to zenith shown (crosses each 10°). The brightest fixed star Sirius is 26° to the left from S, at 39° height. Star cluster M 41 marked when appropriate. Map vertical size is 50° . *Jan Hollan, CzechGlobe*



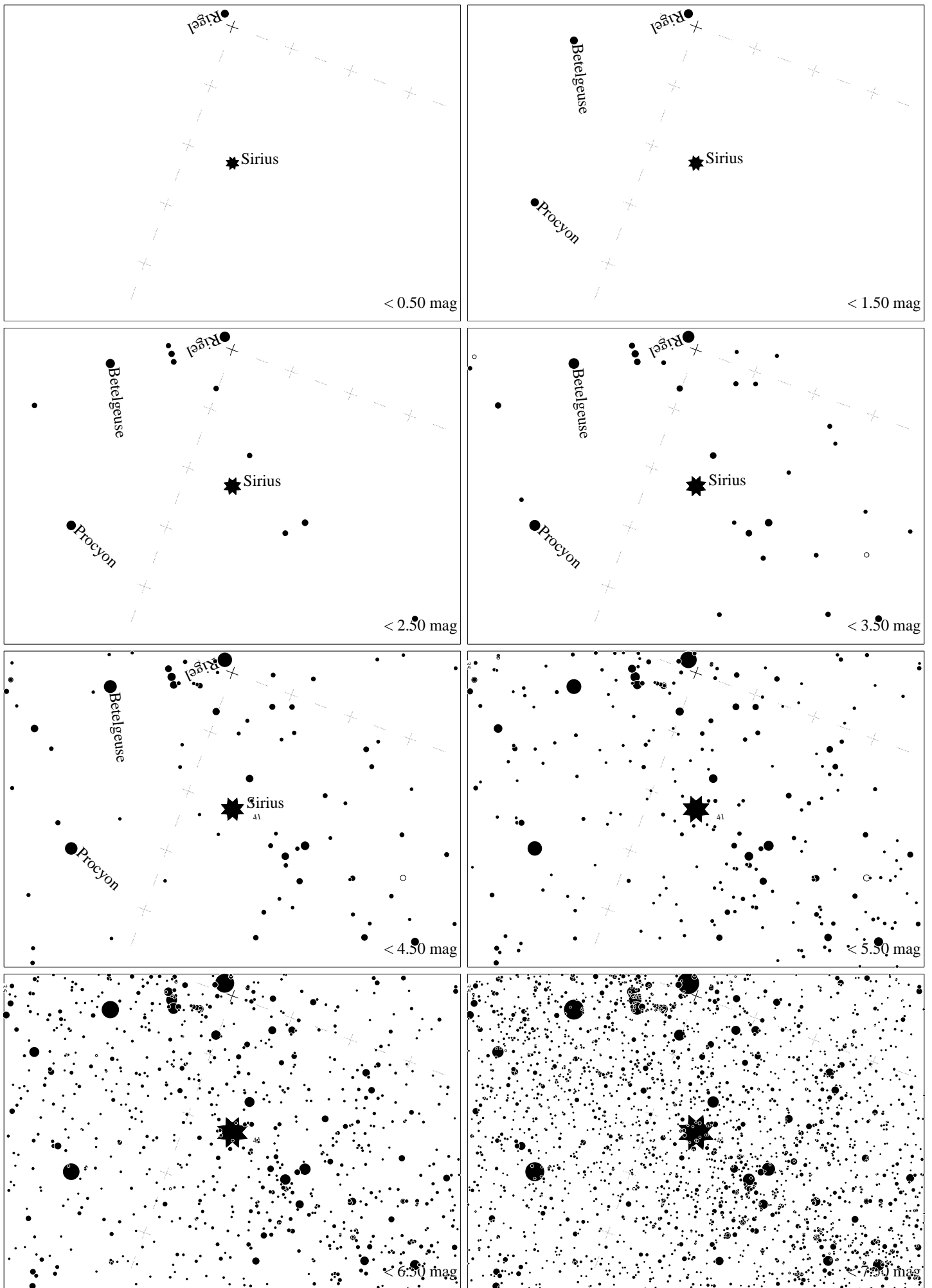
Maps for Globe at Night at latitude 20° , 2025-01-25, 21:00 local time (Sun at -45°), transparent air. Lines from N(E,S,W) to zenith shown (crosses each 10°). The brightest fixed star Sirius is 31° to the left from S, at 48° height. Star cluster M 41 marked when appropriate. Map vertical size is 50° . *Jan Hollan, CzechGlobe*



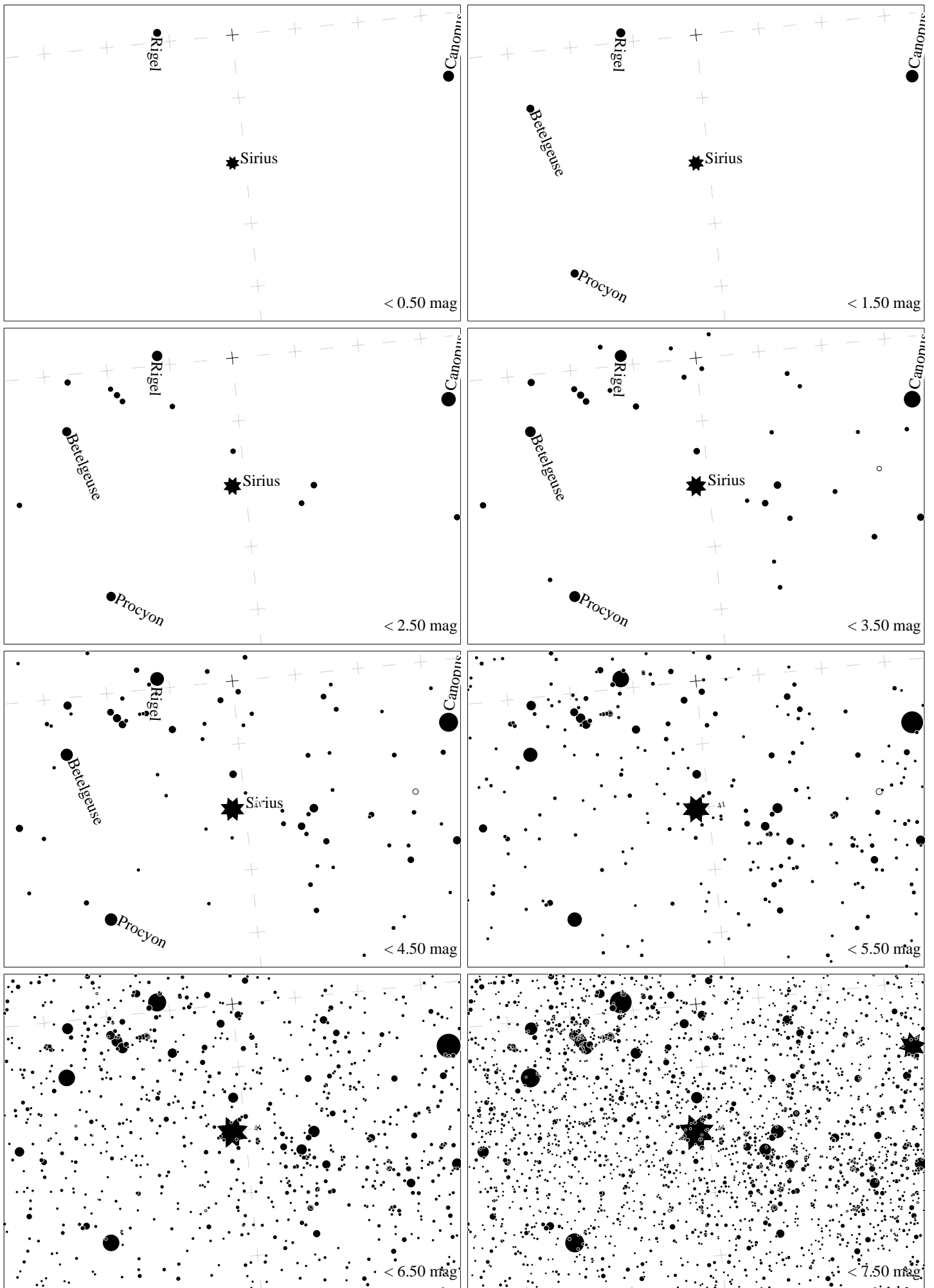
Maps for Globe at Night at latitude 10° , 2025-01-25, 21:00 local time (Sun at -43°), transparent air. Lines from N(E,S,W) to zenith shown (crosses each 10°). The brightest fixed star Sirius is 38° to the left from S, at 56° height. Star cluster M 41 marked when appropriate. Map vertical size is 50° . *Jan Hollan, CzechGlobe*



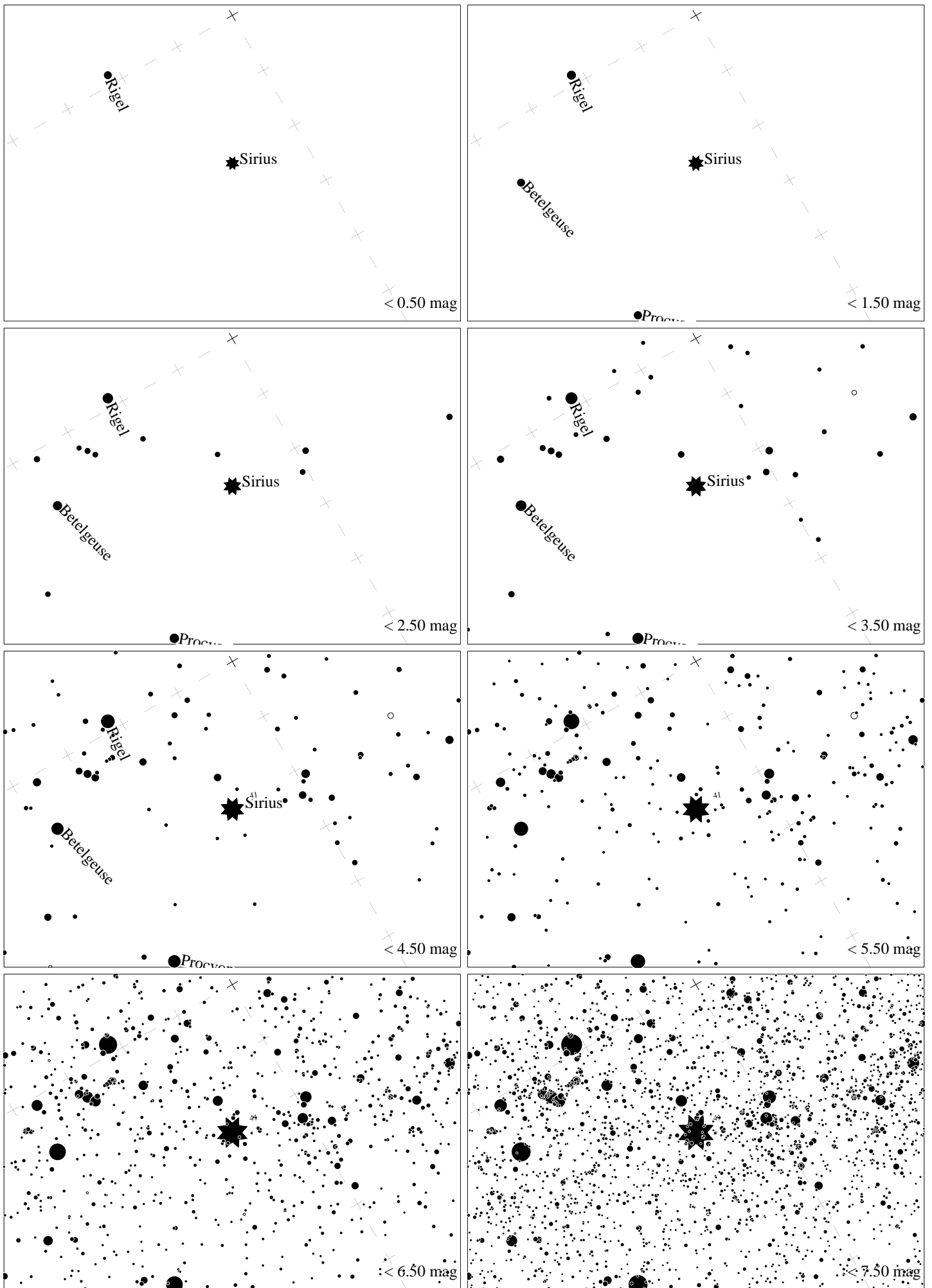
Maps for Globe at Night at latitude 0° , 2025-01-25, 21:00 local time (Sun at -39°), transparent air. Lines from N(E,S,W) to zenith shown (crosses each 10°). The brightest fixed star Sirius is 50° to the left from S, at 63° height. Star cluster M 41 marked when appropriate. Map vertical size is 50° . *Jan Hollan, CzechGlobe*



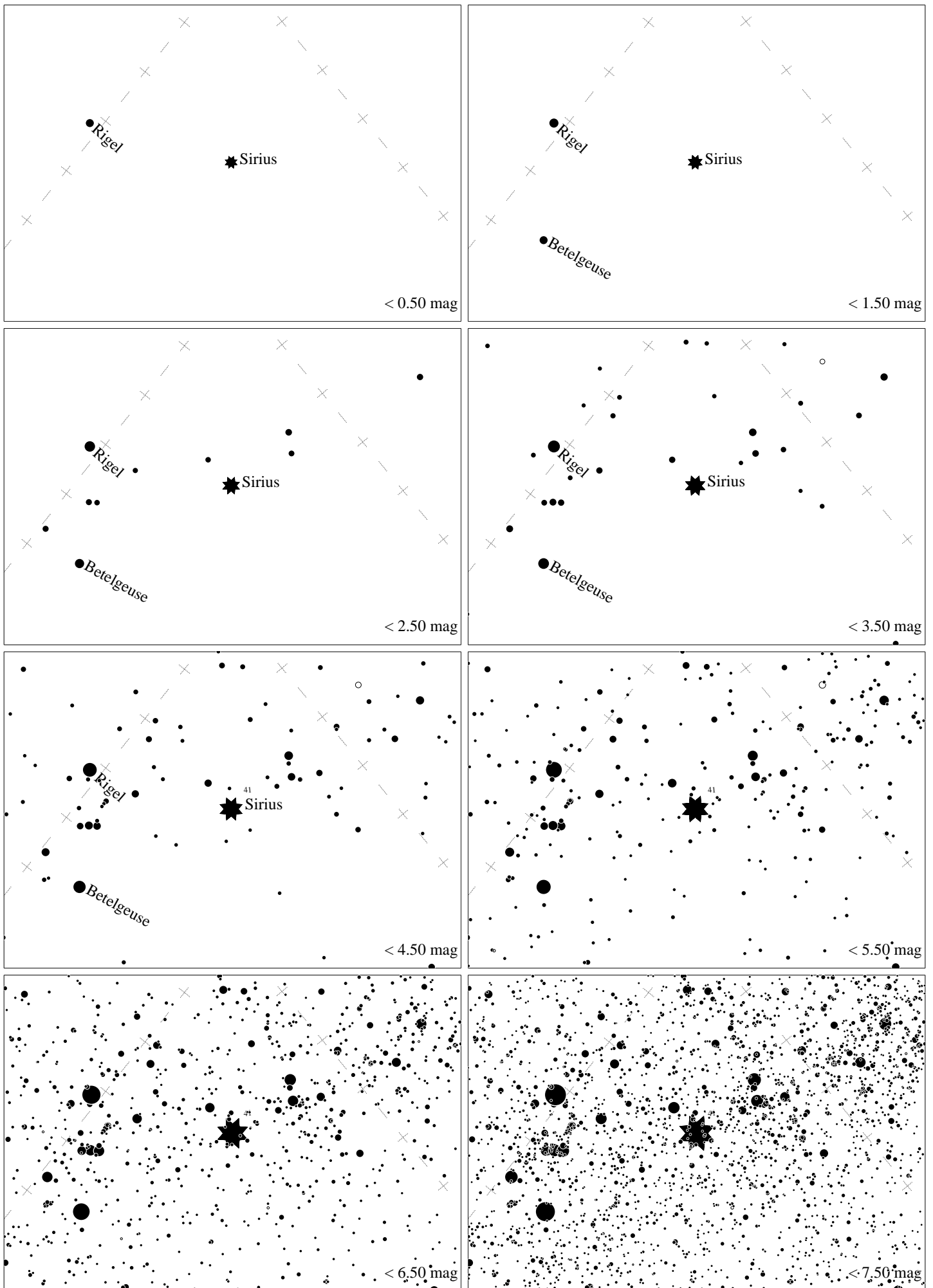
Maps for Globe at Night at latitude -10° , 2025-01-25, 21:00 local time (Sun at -34°), transparent air. Lines from N(E,S,W) to zenith shown (crosses each 10°). The brightest fixed star Sirius is 70° to the left from S, at 68° height. Star cluster M 41 marked when appropriate. Map vertical size is 50° . *Jan Hollan, CzechGlobe*



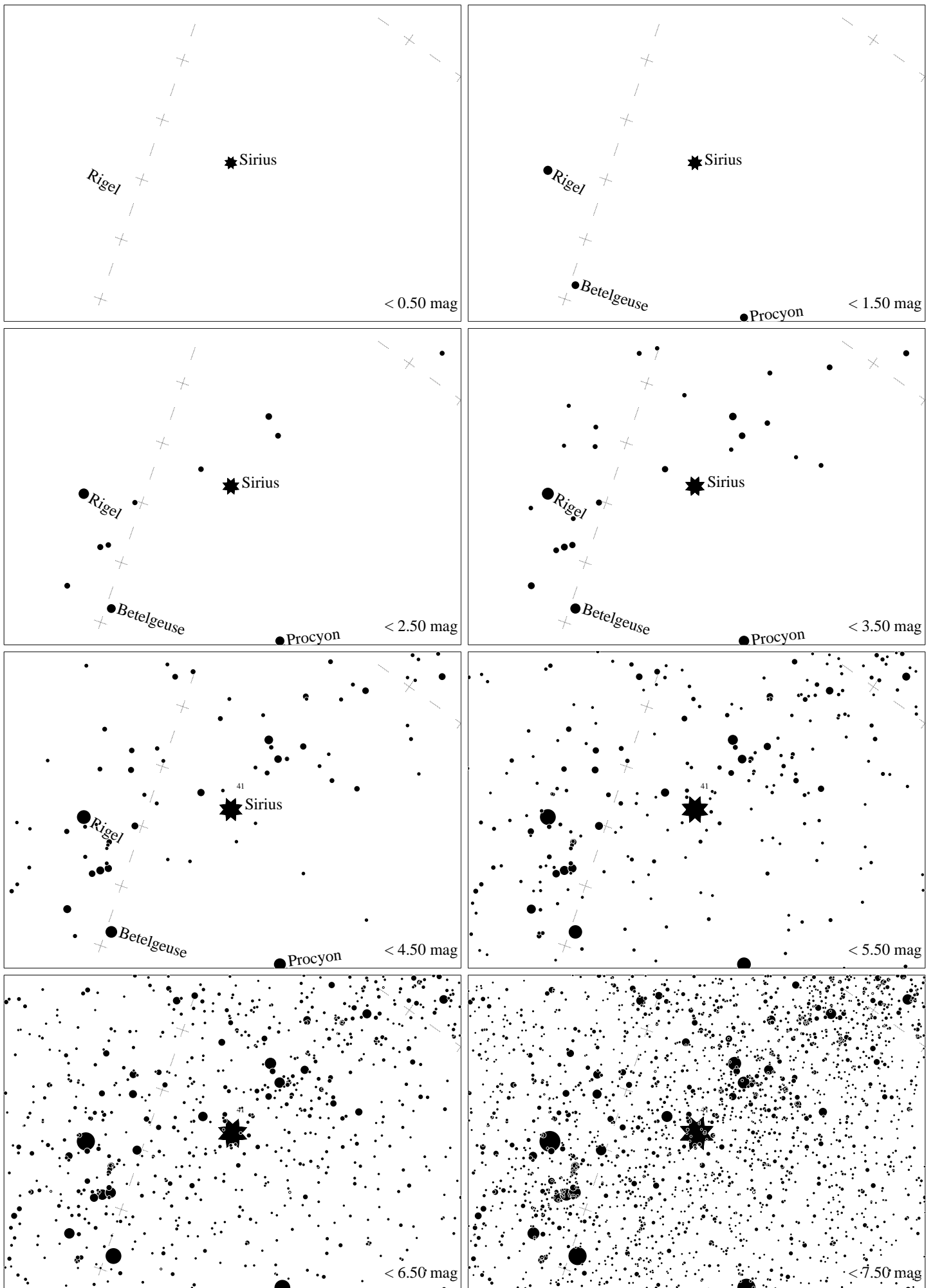
Maps for Globe at Night at latitude -20° , 2025-01-25, 21:00 local time (Sun at -29°), transparent air. Lines from N(E,S,W) to zenith shown (crosses each 10°). The brightest fixed star Sirius is 84° to the right from N, at 70° height. Star cluster M 41 marked when appropriate. Map vertical size is 50° . *Jan Hollan, CzechGlobe*



Maps for Globe at Night at latitude -30° , 2025-01-25, 21:00 local time (Sun at -23°), transparent air. Lines from N(E,S,W) to zenith shown (crosses each 10°). The brightest fixed star Sirius is 60° to the right from N, at 67° height. Star cluster M 41 marked when appropriate. Map vertical size is 50° . *Jan Hollan, CzechGlobe*



Maps for Globe at Night at latitude -40° , 2025-01-25, 21:00 local time (Sun at -16°), transparent air. Lines from N(E,S,W) to zenith shown (crosses each 10°). The brightest fixed star Sirius is 44° to the right from N, at 60° height. Star cluster M 41 marked when appropriate. Map vertical size is 50° . *Jan Hollan, CzechGlobe*



Maps for Globe at Night at latitude -50° , 2025-01-25, 21:30 local time (Sun at -12°), transparent air. Lines from N(E,S,W) to zenith shown (crosses each 10°). The brightest fixed star Sirius is 23° to the right from N, at 55° height. Star cluster M 41 marked when appropriate. Map vertical size is 50° . *Jan Hollan, CzechGlobe*