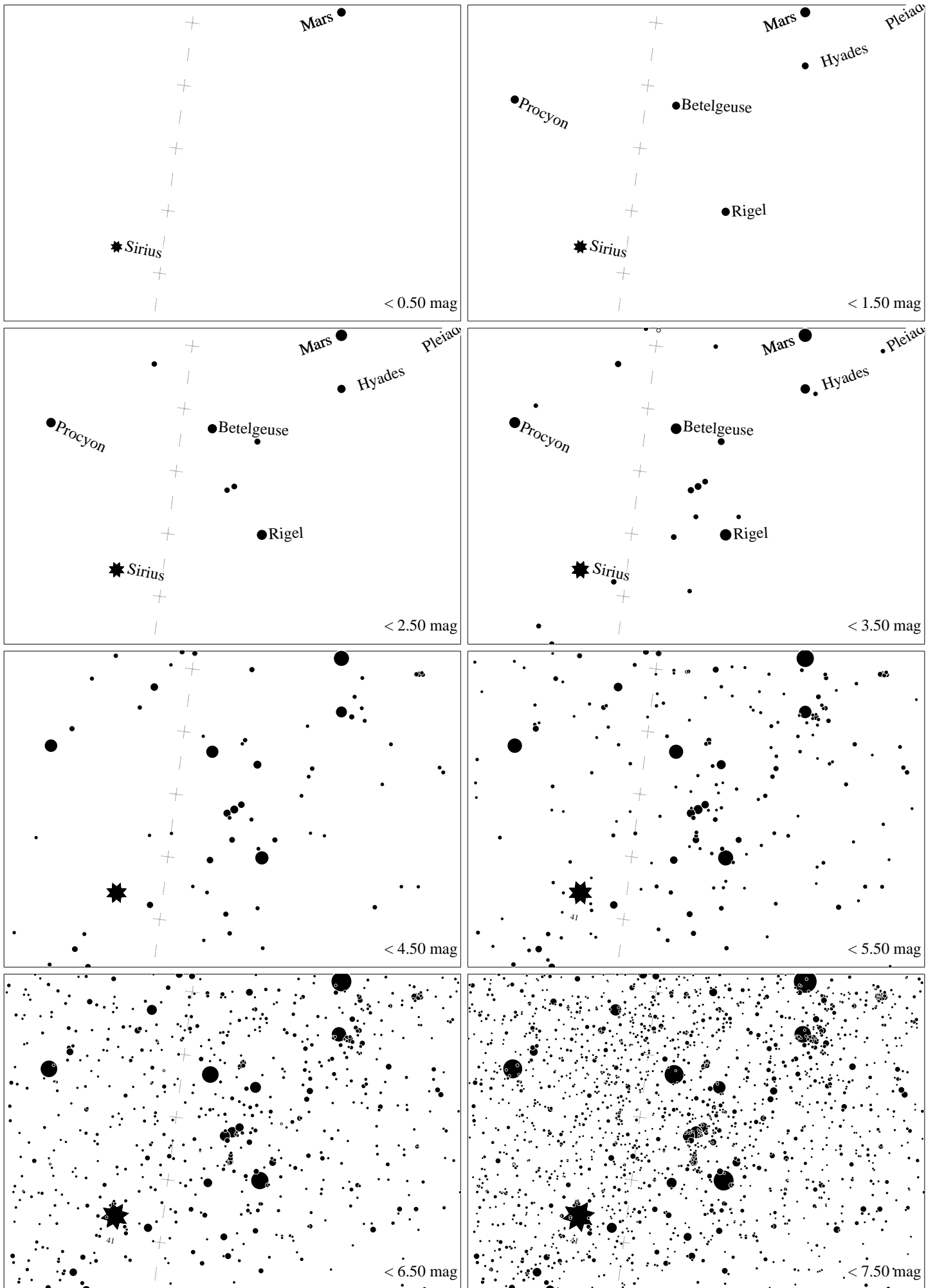
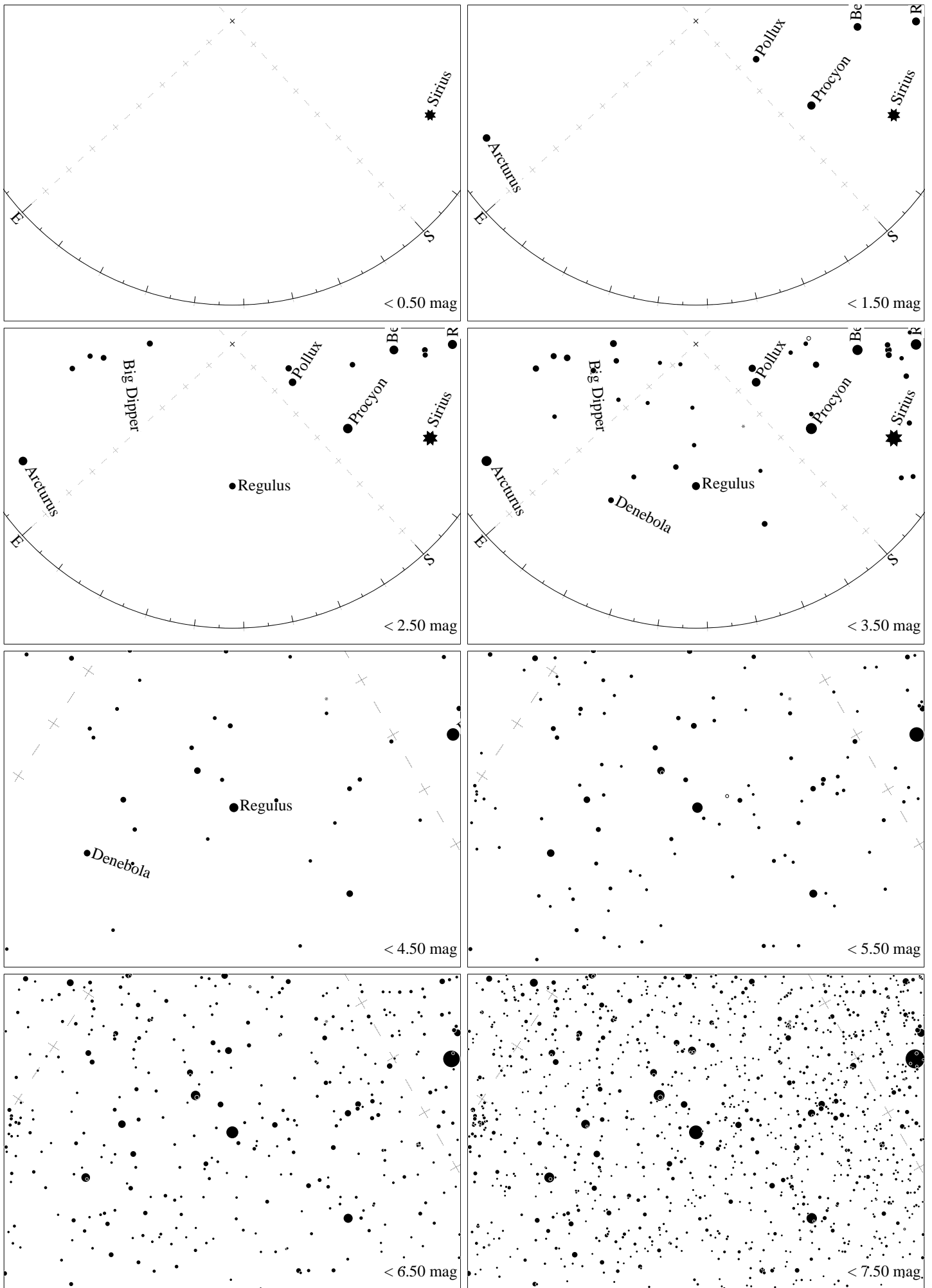


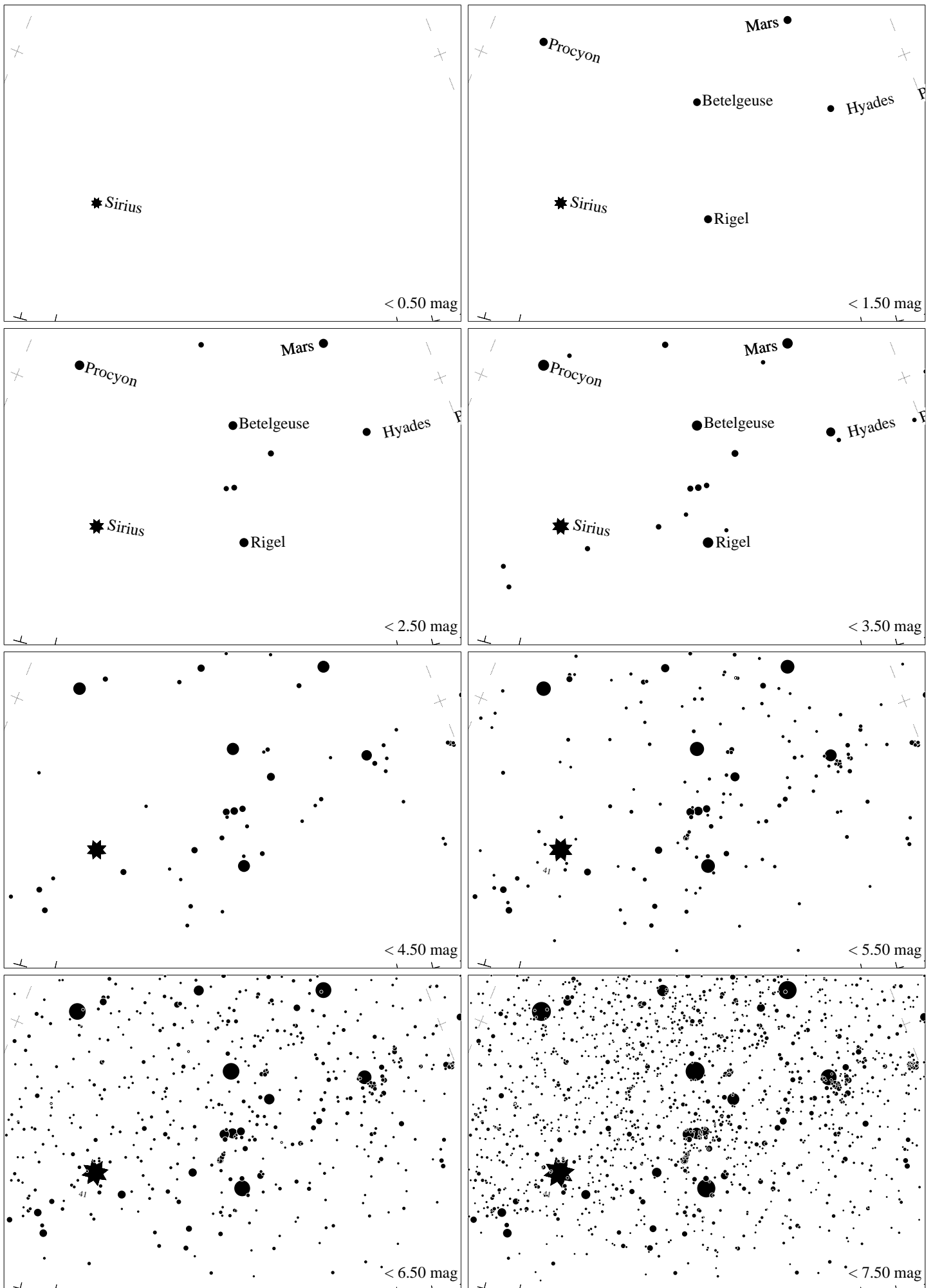
Maps for Globe at Night at latitude 50° , 2023-01-09, 21 h local time (Sun at -44°), transparent air. Lines from N(E,S,W) to zenith shown (crosses each 10°). Orion's belt is 25° to the left from S, at 36° height. Star clusters M 41 and M 35 marked when appropriate. Map vertical size is 50° . *Jan Hollan maps, CzechGlobe*



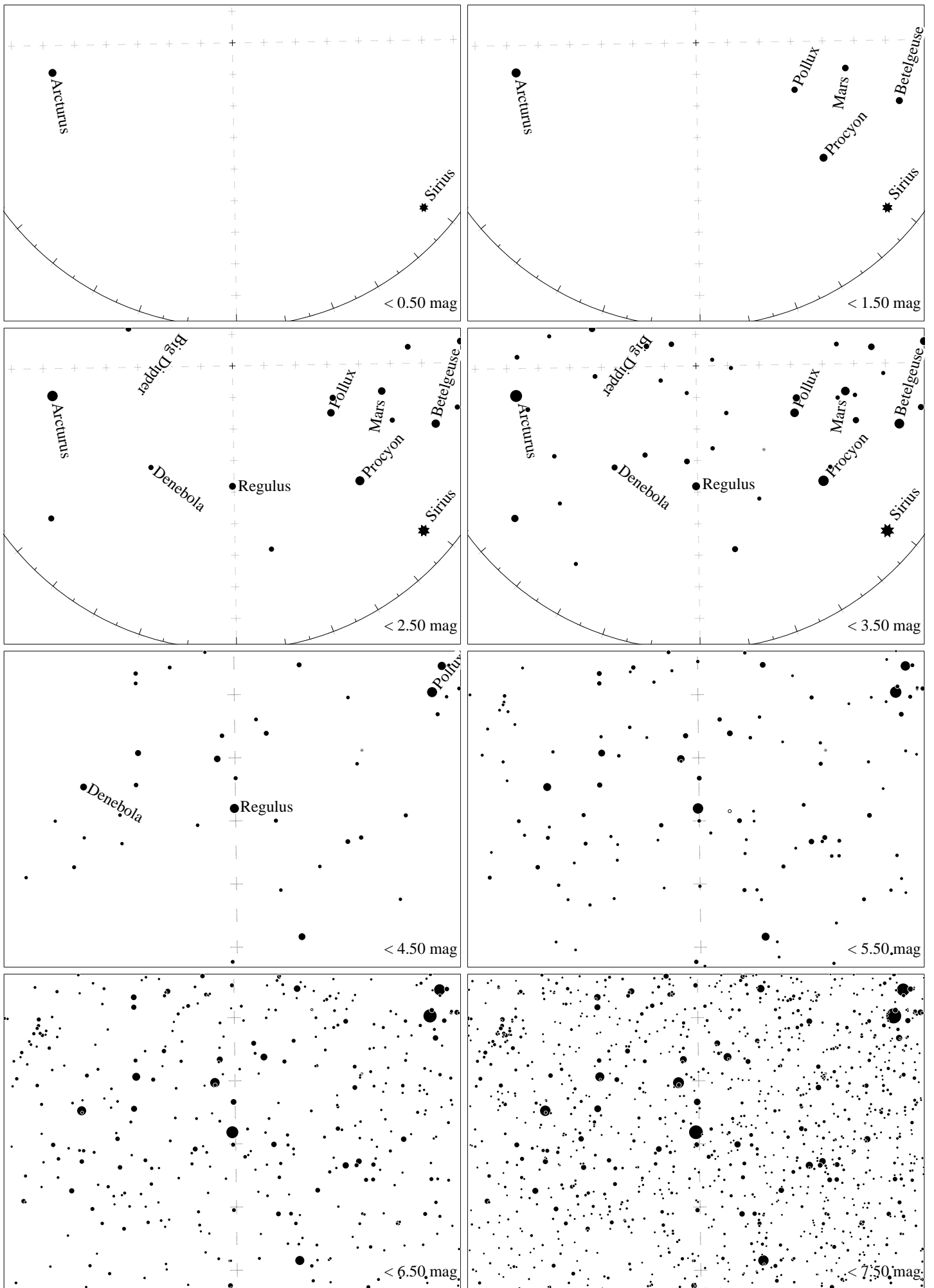
Maps for Globe at Night at latitude 50° , 2023-02-08, 21:00 local time (Sun at -37°), transparent air. Lines from N(E,S,W) to zenith shown (crosses each 10°). Orion's belt is 12° to the right from S, at 38° height. Star clusters M 41 and M35 marked when appropriate. Map vertical size is 50° . *Jan Hollan maps, CzechGlobe*



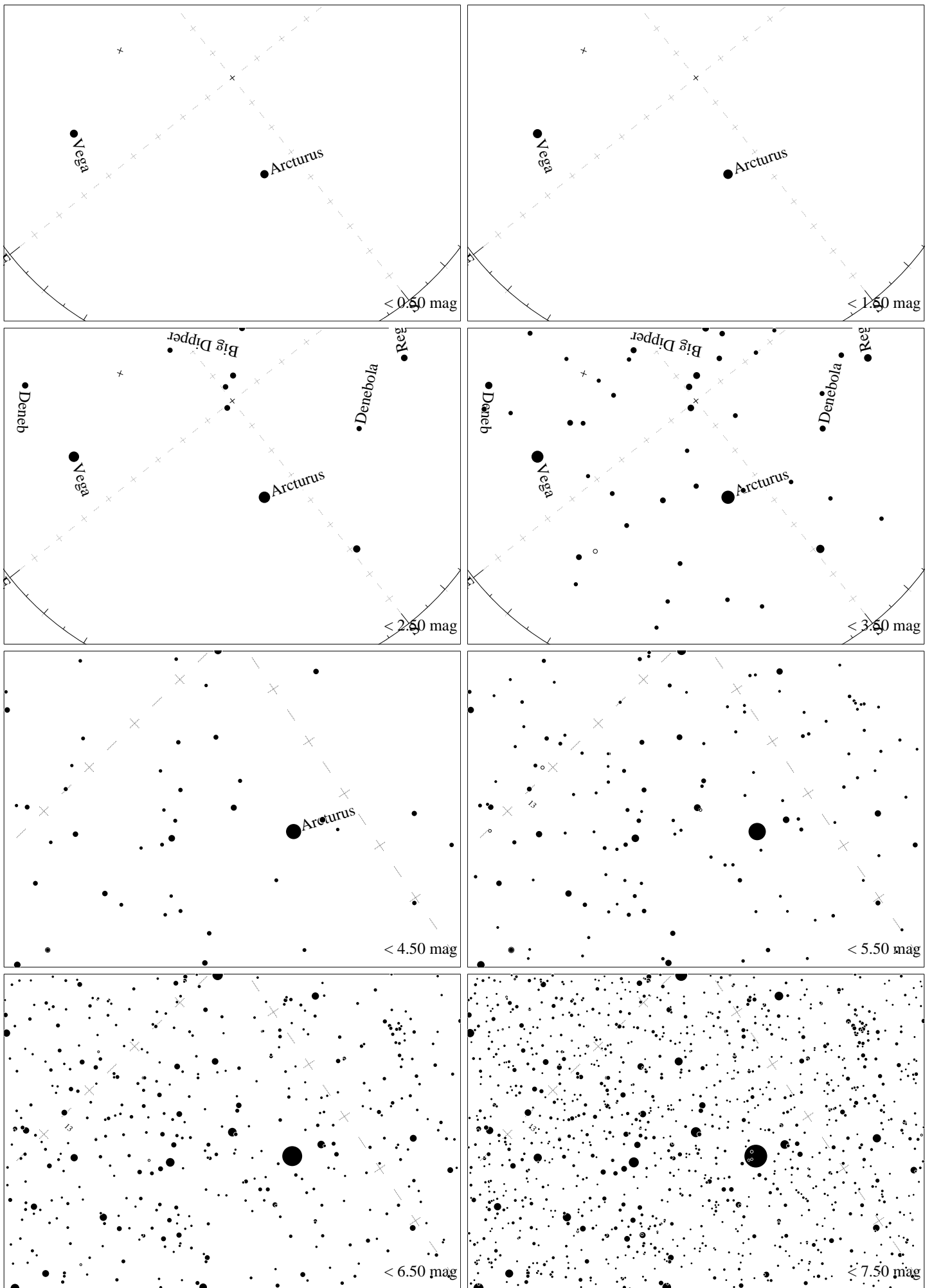
Maps for Globe at Night at latitude 50° , 2023-03-10, 21 h local time (Sun at -29°), transparent air. Lines from N(E,S,W) to zenith shown (crosses each 10°). Regulus (α Leonis) is 42° to the left from S, at 45° height. Detailed maps 50° vertically, the first four maps 100° . *Jan Hollan maps, CzechGlobe*



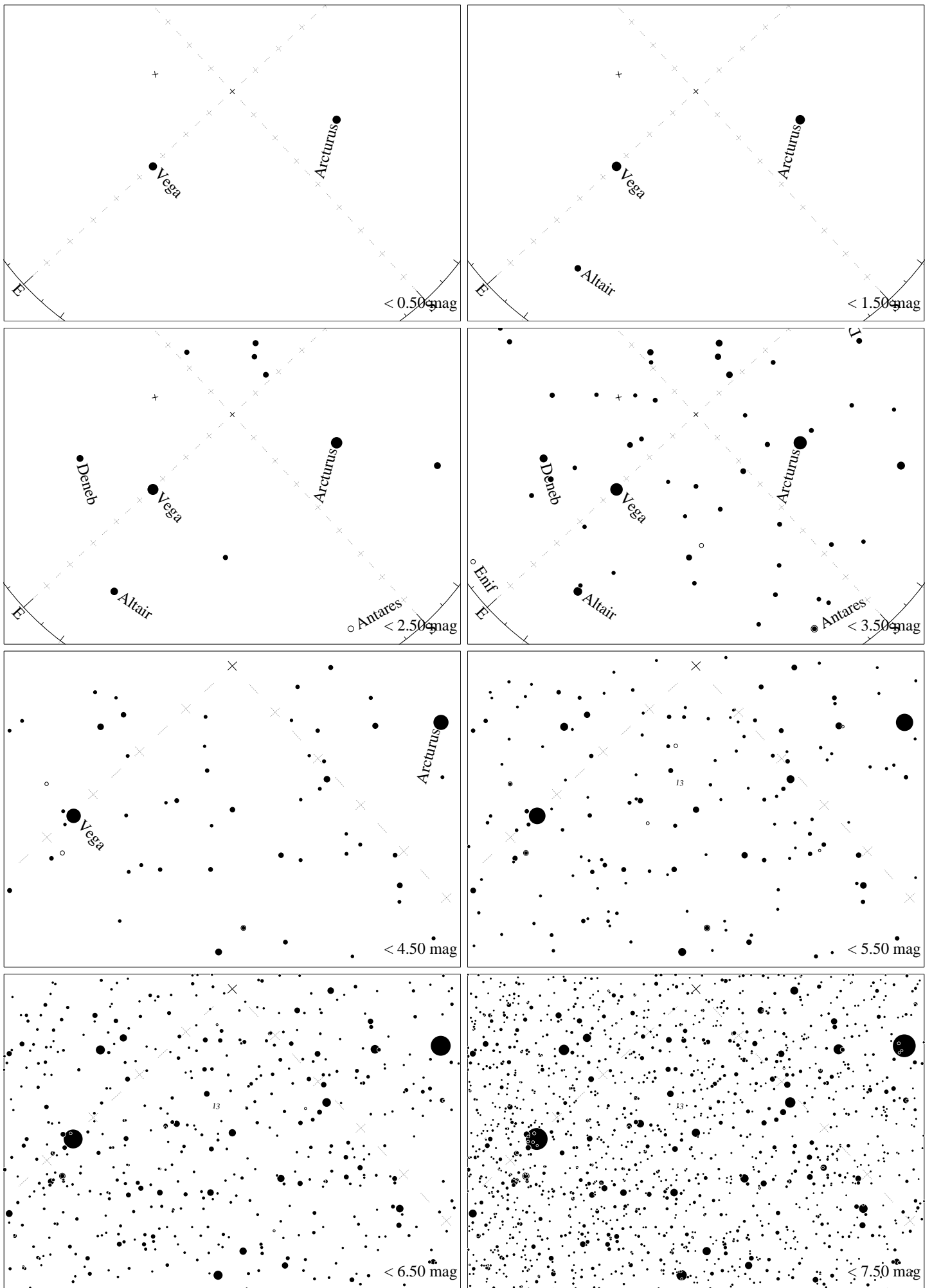
Maps for Globe at Night at latitude 50° , 2023-03-10, 21 h local time (Sun at -29°), transparent air. Lines from N(E,S,W) to zenith shown (crosses each 10°). Orion's belt is 46° to the right from S, at 29° height. Star clusters M 41 and M35 marked when appropriate. Map vertical size is 50° . *Jan Hollan maps, CzechGlobe*



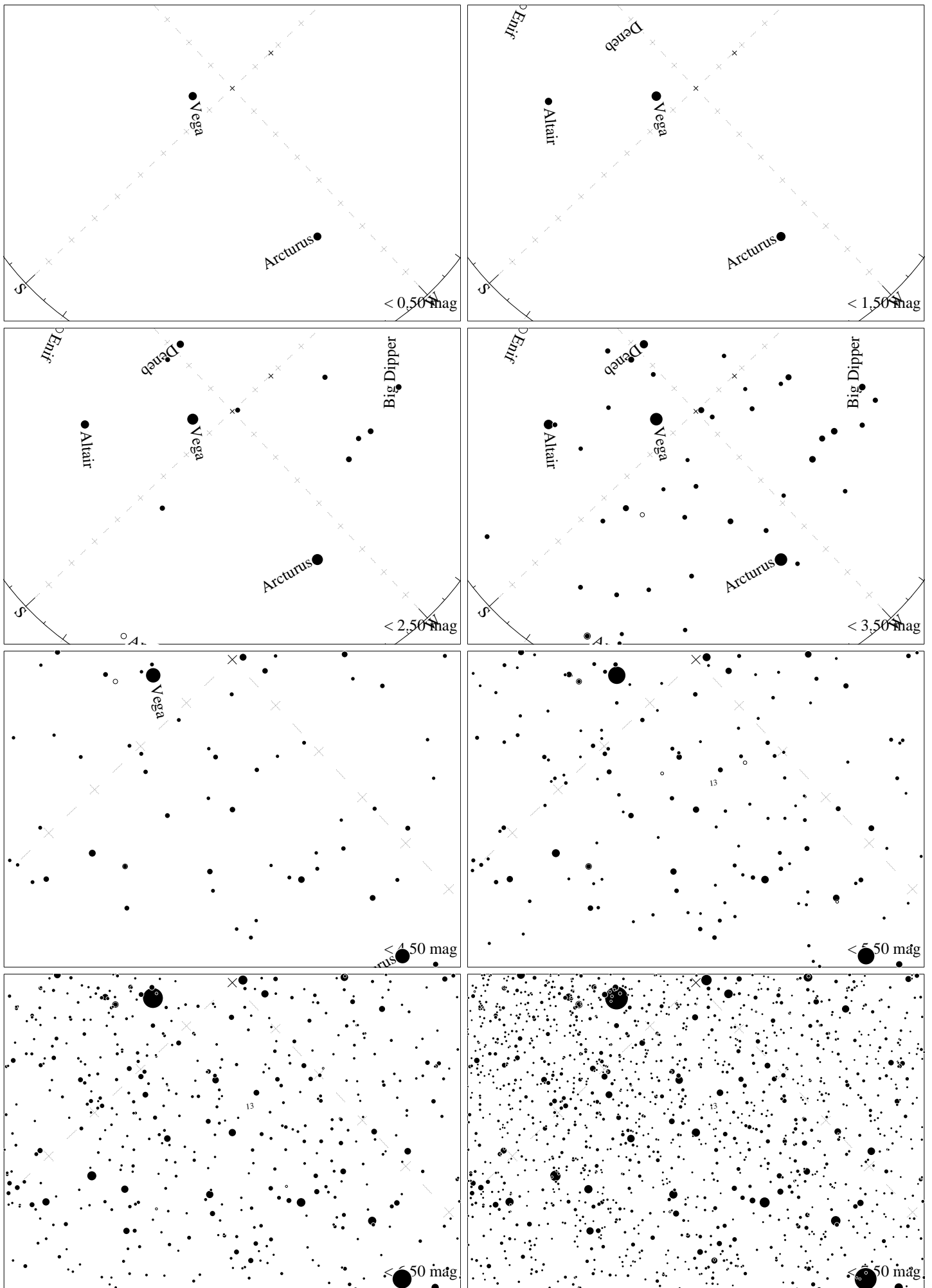
Maps for Globe at Night at latitude 50° , 2023-04-08, 21 h local time (Sun at -20°), transparent air. Lines from N(E,S,W) to zenith shown (crosses each 10°). Regulus (α Leonis) is 1° to the left from S, at 52° height. Detailed maps 50° vertically, the first four maps 100° . *Jan Hollan maps, CzechGlobe*



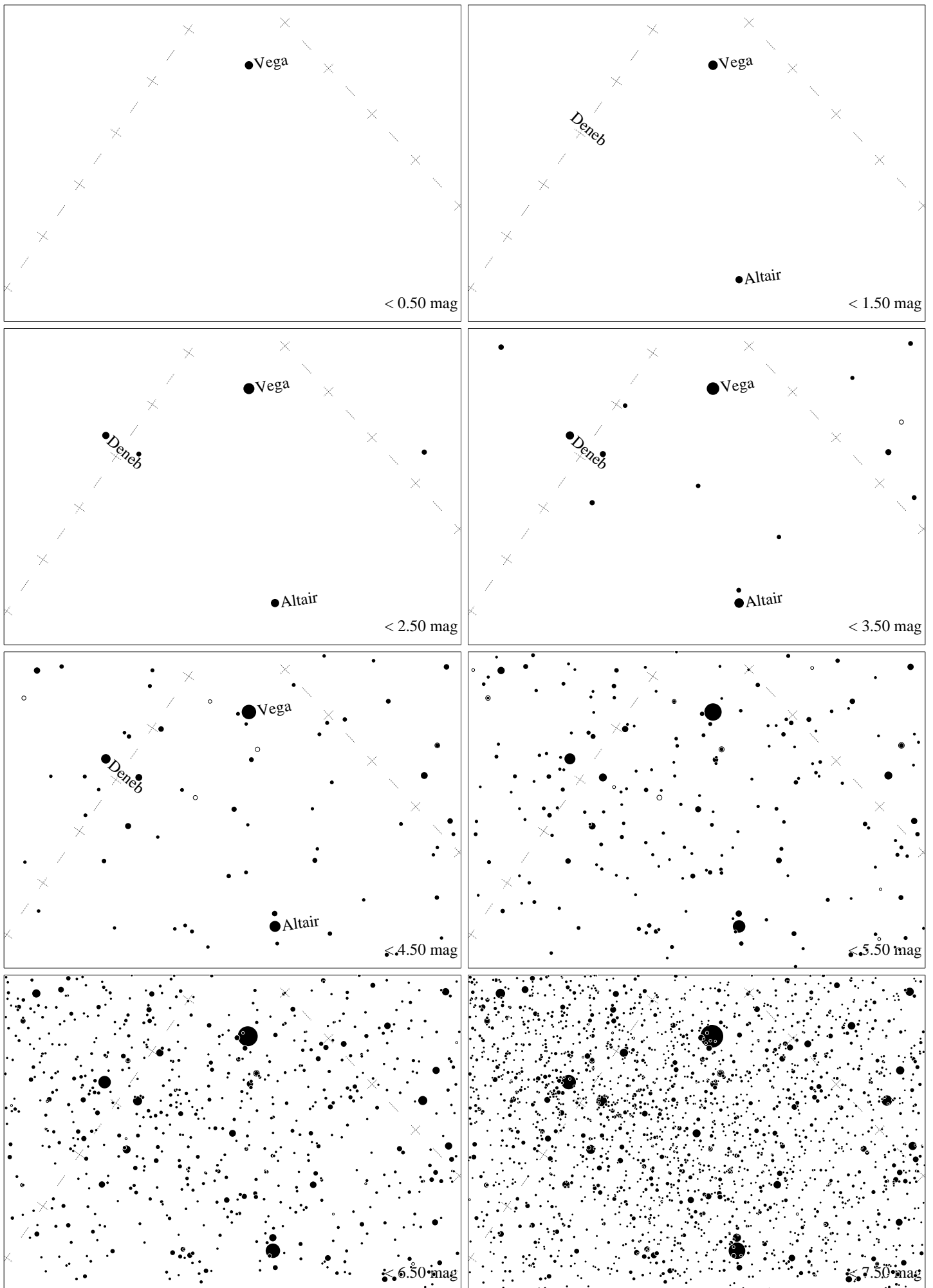
Maps for Globe at Night latitude 50° , 2023-05-07, 22:30 local time (Sun at -20°), transparent air. Lines from N(E,S,W) to zenith shown (crosses each 10°). Centered on Izar (ϵ Bootis), which is 38° to the left from S, at 63° height. Detailed maps 50° vertically, the first four maps 100° . *Jan Hollan, CzechGlobe*



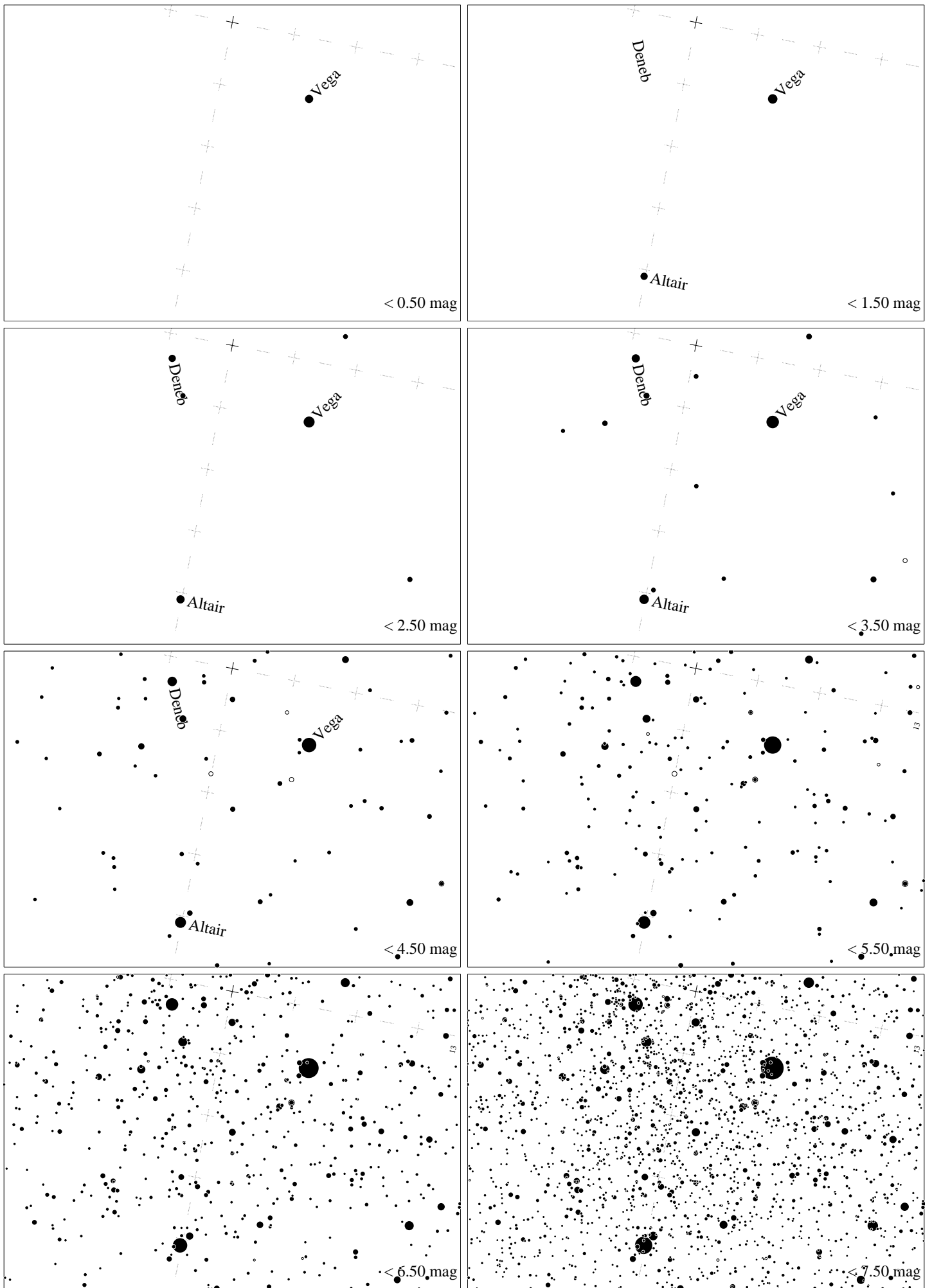
Maps for Globe at Night latitude 50° , 2023-06-06, 22:30 local time (Sun at -15°), transparent air. Lines from N(E,S,W) to zenith shown (crosses each 10°). Centered on ζ Herculis, which is 43° to the left from S, at 67° height. Detailed maps 50° vertically, the first four maps 100° . *Jan Hollan, CzechGlobe*



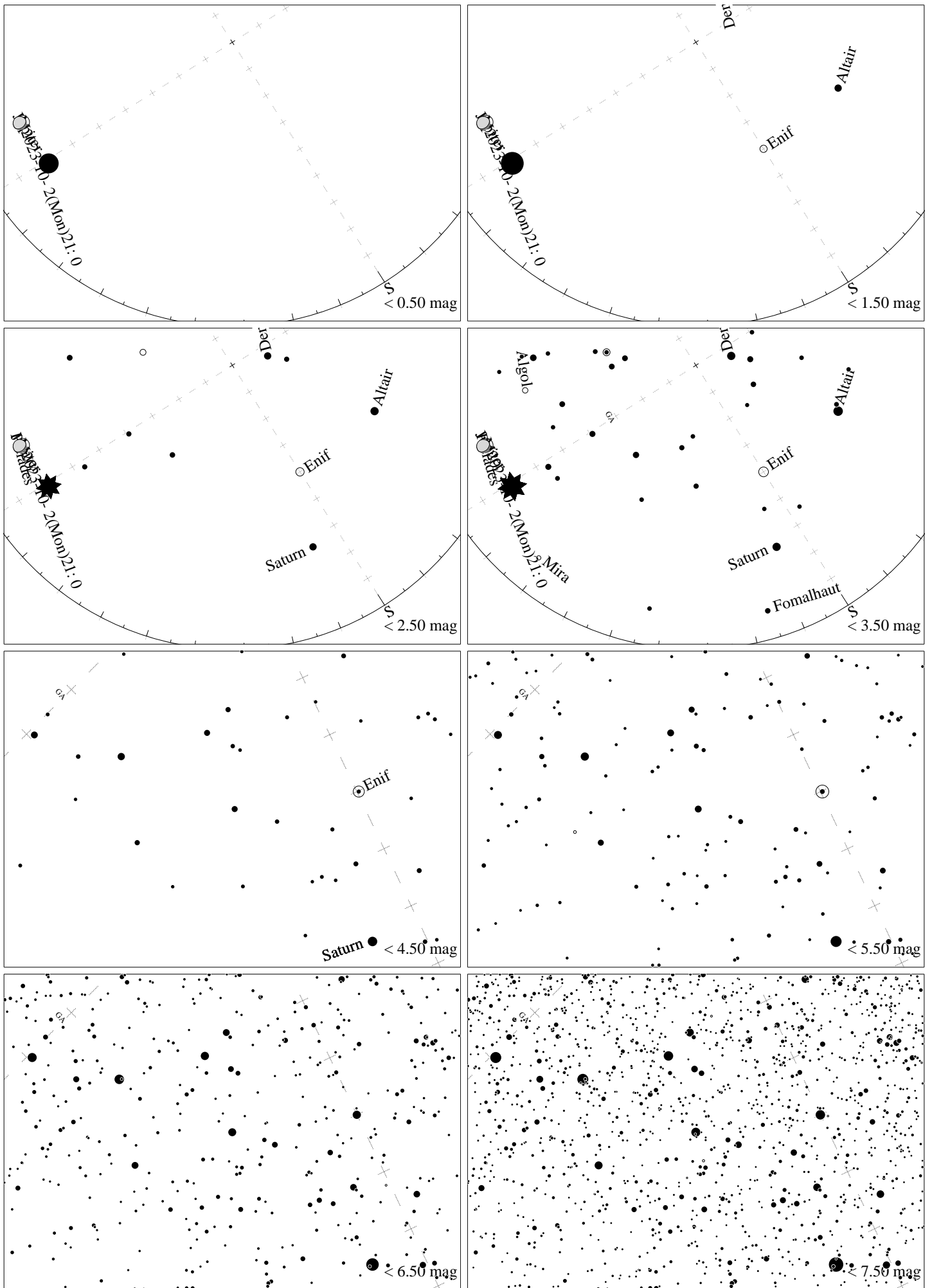
Maps for Globe at Night latitude 50° , 2023-07-07, 23 h local time (Sun at -16°), transparent air. Lines from N(E,S,W) to zenith shown (crosses each 10°). Centered on ζ Herculis, which is 47° to the right from S, at 66° height. Detailed maps 50° vertically, the first four maps 100° . *Jan Hollan, CzechGlobe*



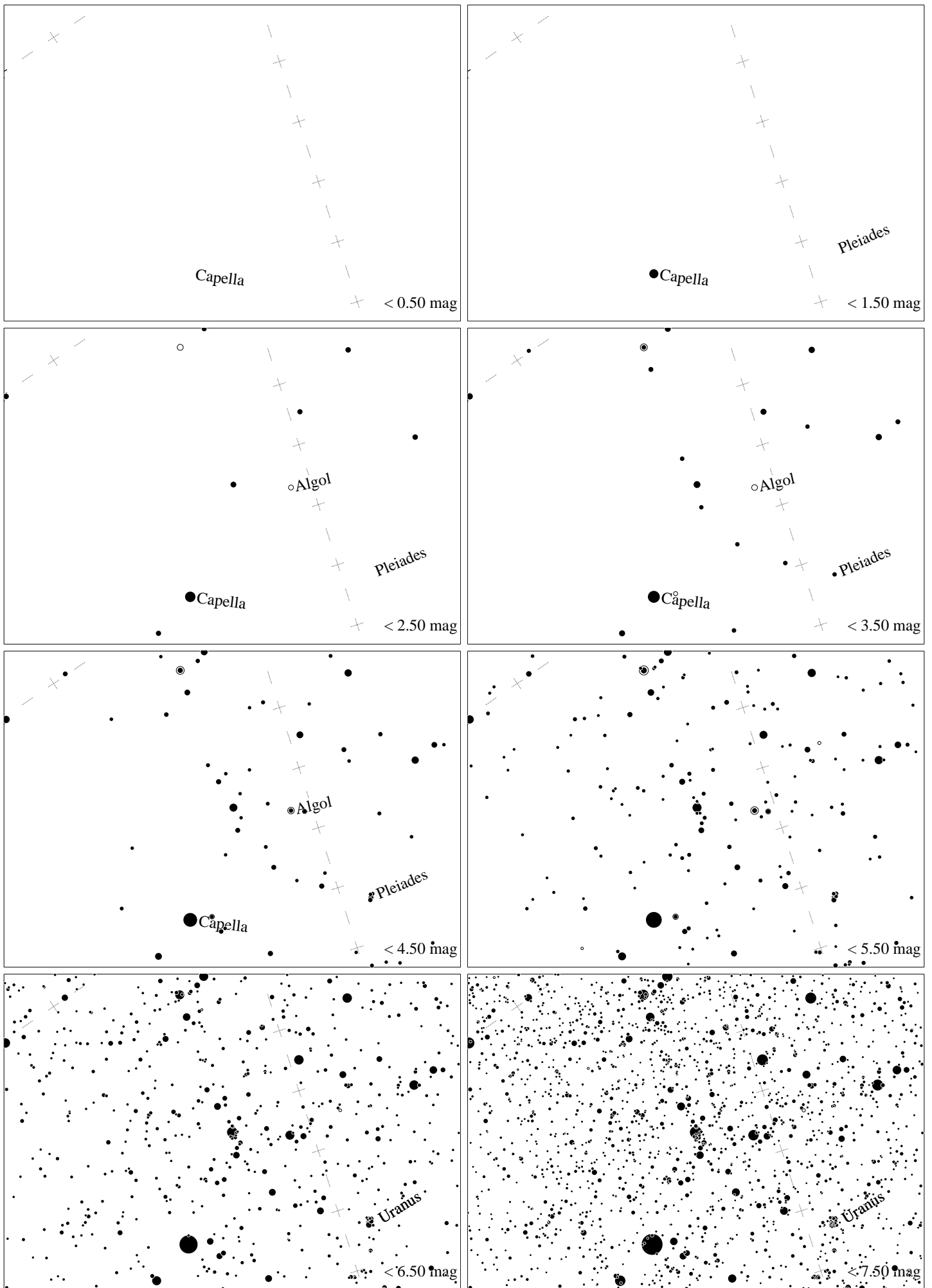
Maps for Globe at Night latitude 50° , 2023-08-04, 21 h local time (Sun at -11°), transparent air. Lines from N(E,S,W) to zenith shown (crosses each 10°). Centered on Albireo (β Cygni), 50° to the left from S, at 61° height, near the centre of Summer Triangle. Map vertical size is 50° . *Jan Hollan, CzechGlobe*



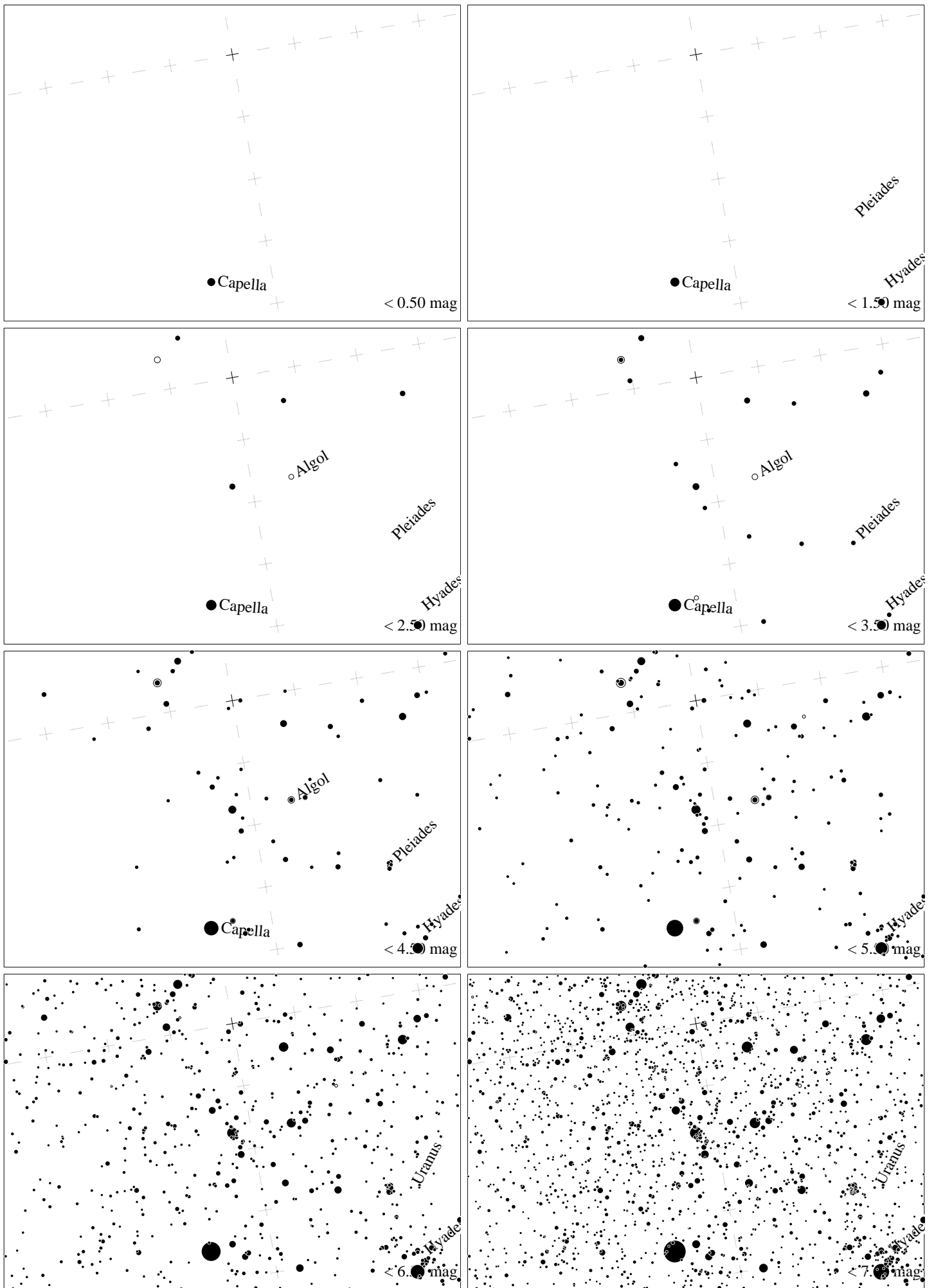
Maps for Globe at Night latitude 50° , 2023-09-03, 21 h local time (Sun at -21°), transparent air. Lines from N(E,S,W) to zenith shown (crosses each 10°). Centered on Albireo (β Cygni), 11° to the right from S, at 68° height, near the centre of Summer Triangle. Map vertical size is 50° . *Jan Hollan, CzechGlobe*



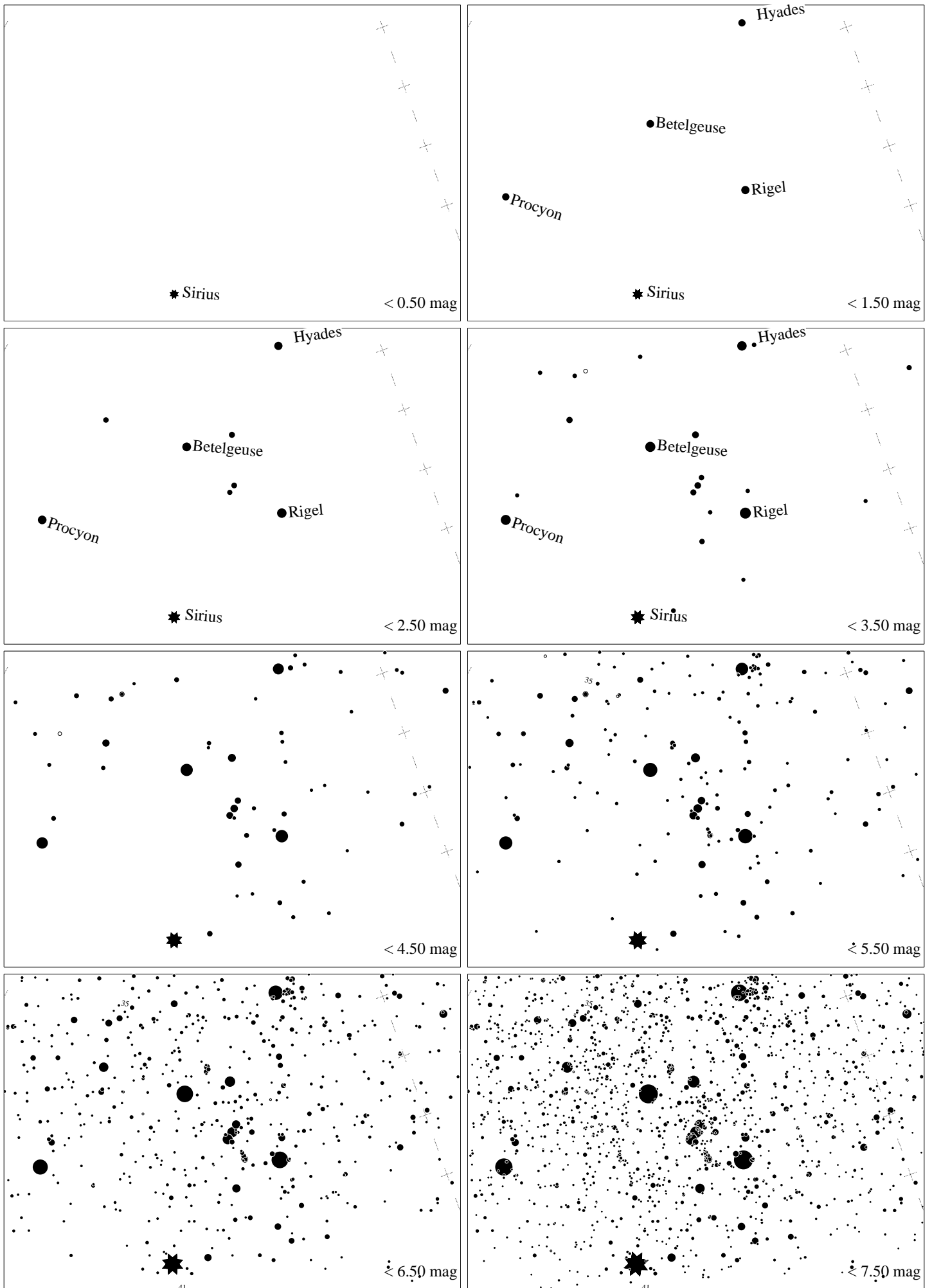
Maps for Globe at Night latitude 50° , 2023-10-02, 21 h local time (Sun at -32°), transparent air. Lines from N(E,S,W) to zenith shown (crosses each 10°). The map is centered on Markab (α Pegasi), which is 32° to the left from S, at 52° height. Detailed maps 50° vertically, the first four maps 100° . Jan Hollan, CzechGlobe



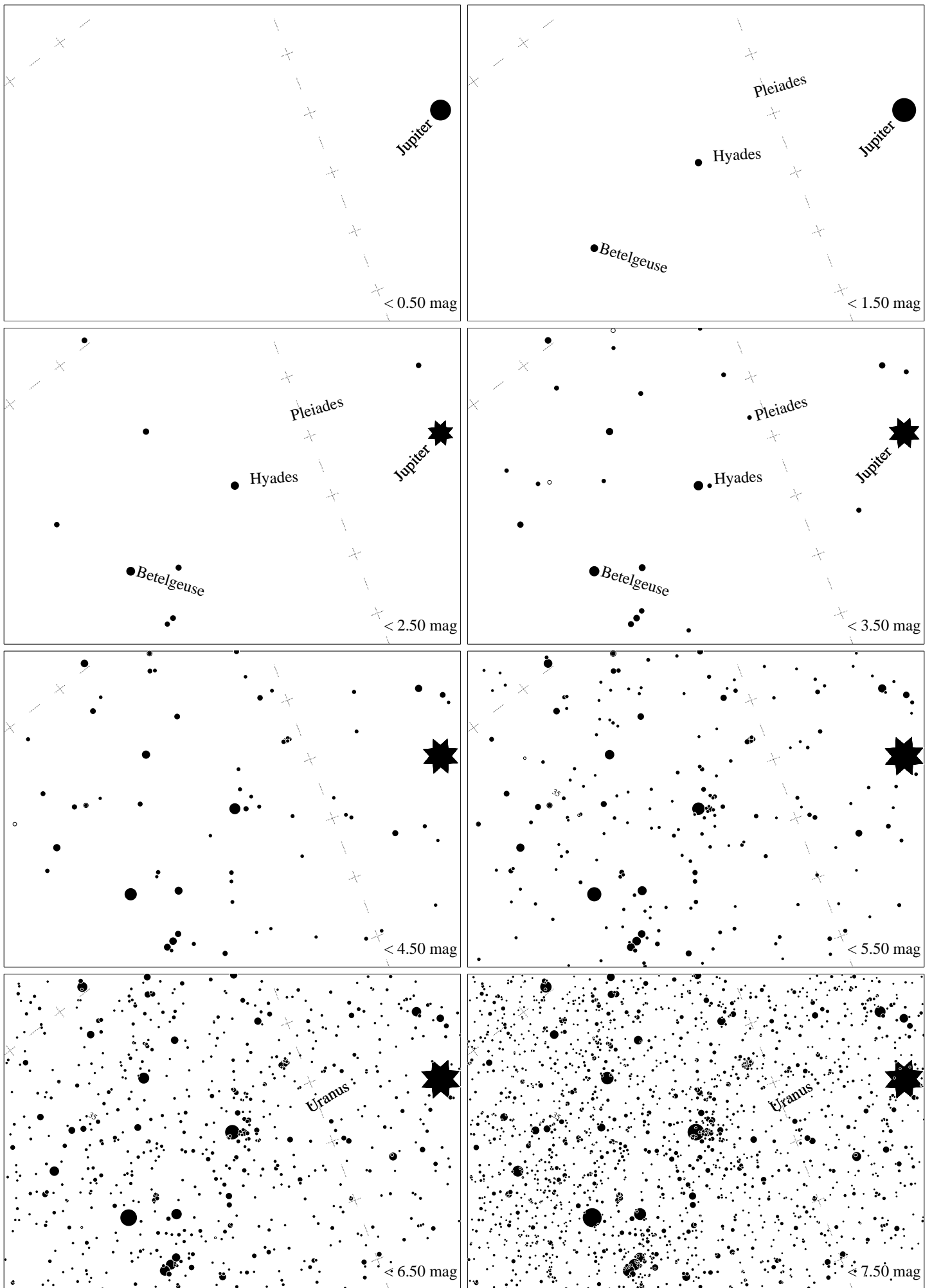
Maps for Globe at Night latitude 50° , 2023-11-01, 21 h local time (Sun at -42°), transparent air. Lines from N(E,S,W) to zenith shown (crosses each 10°). Centered at Mirfak (α Persei), 68° to the right from N, at 55° height. The brightest star is Capella. Map vertical size 50° . *Jan Hollan, CzechGlobe*



Maps for Globe at Night latitude 50° , 2023-11-30, 21 h local time (Sun at -46°), transparent air. Lines from N(E,S,W) to zenith shown (crosses each 10°). Centered at Mirfak (α Persei), 80° to the right from N, at 73° height. The brightest star is Capella. Map vertical size 50° . *Jan Hollan, CzechGlobe*



Maps for Globe at Night at latitude 50° , 2023-12-30, 21 h local time (Sun at -46°), transparent air. Lines from N(E,S,W) to zenith shown (crosses each 10°). Orion's belt is 37° to the left from S, at 33° height. Star clusters M 41 and M35 marked when appropriate. Map vertical size is 50° . *Jan Hollan maps, CzechGlobe*



Maps for Globe at Night at latitude 50° , 2023-12-30, 21 h local time (Sun at -46°), transparent air. Lines from N(E,S,W) to zenith shown (crosses each 10°). Aldebaran is 26° to the left from S, at 54° height. Star cluster M35 marked when appropriate. Map vertical size is 50° . *Jan Hollan maps, CzechGlobe*