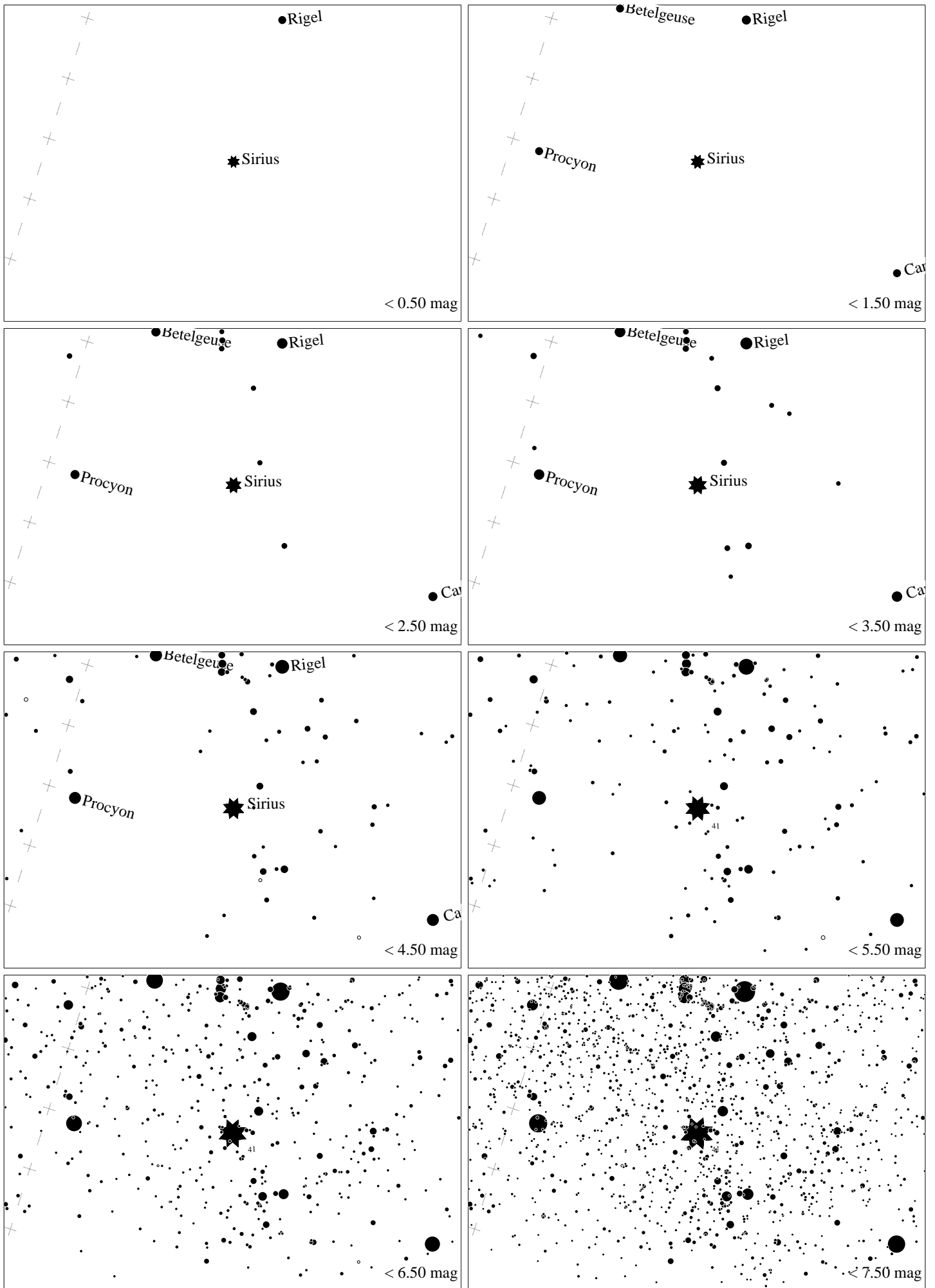
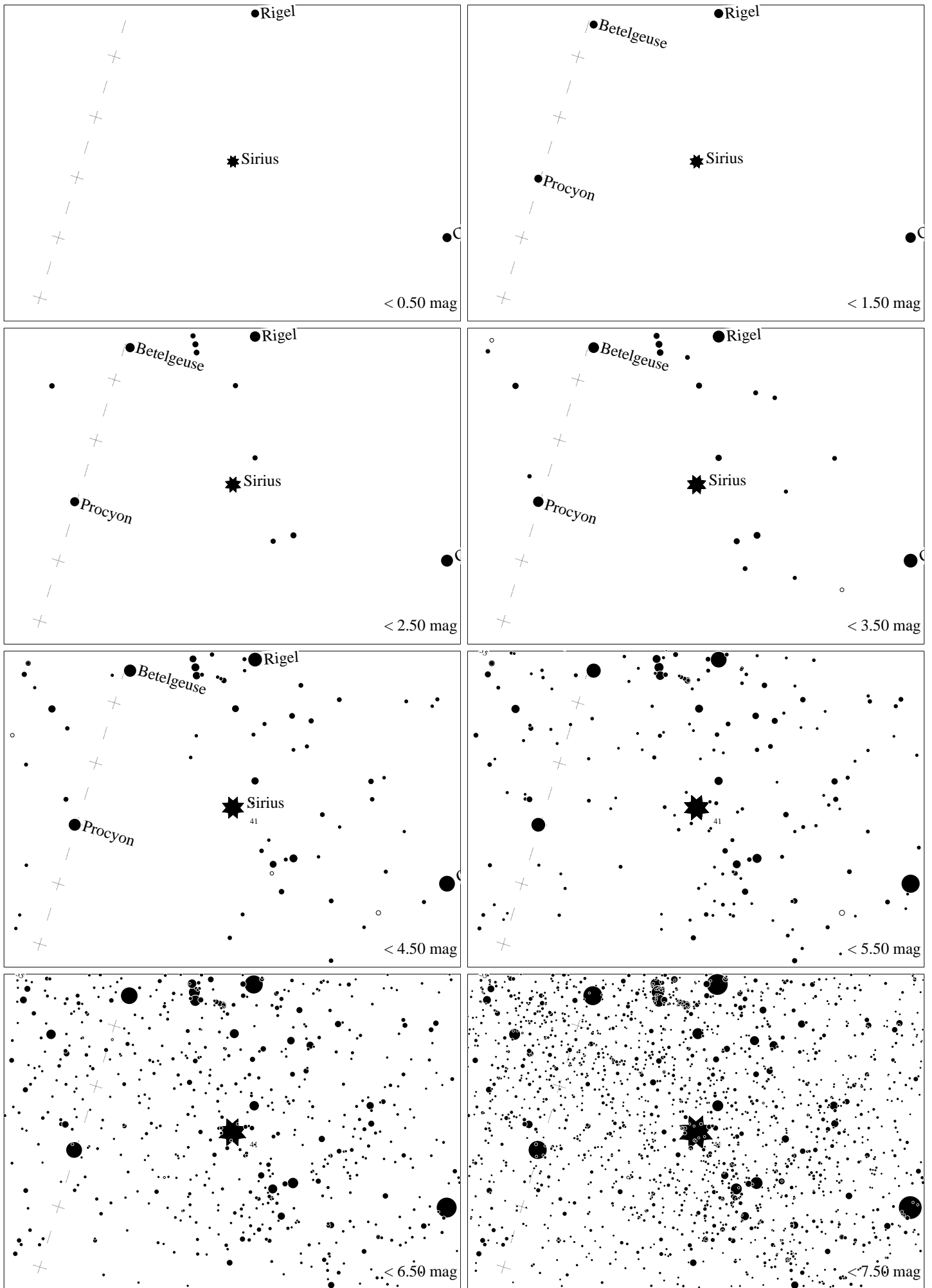


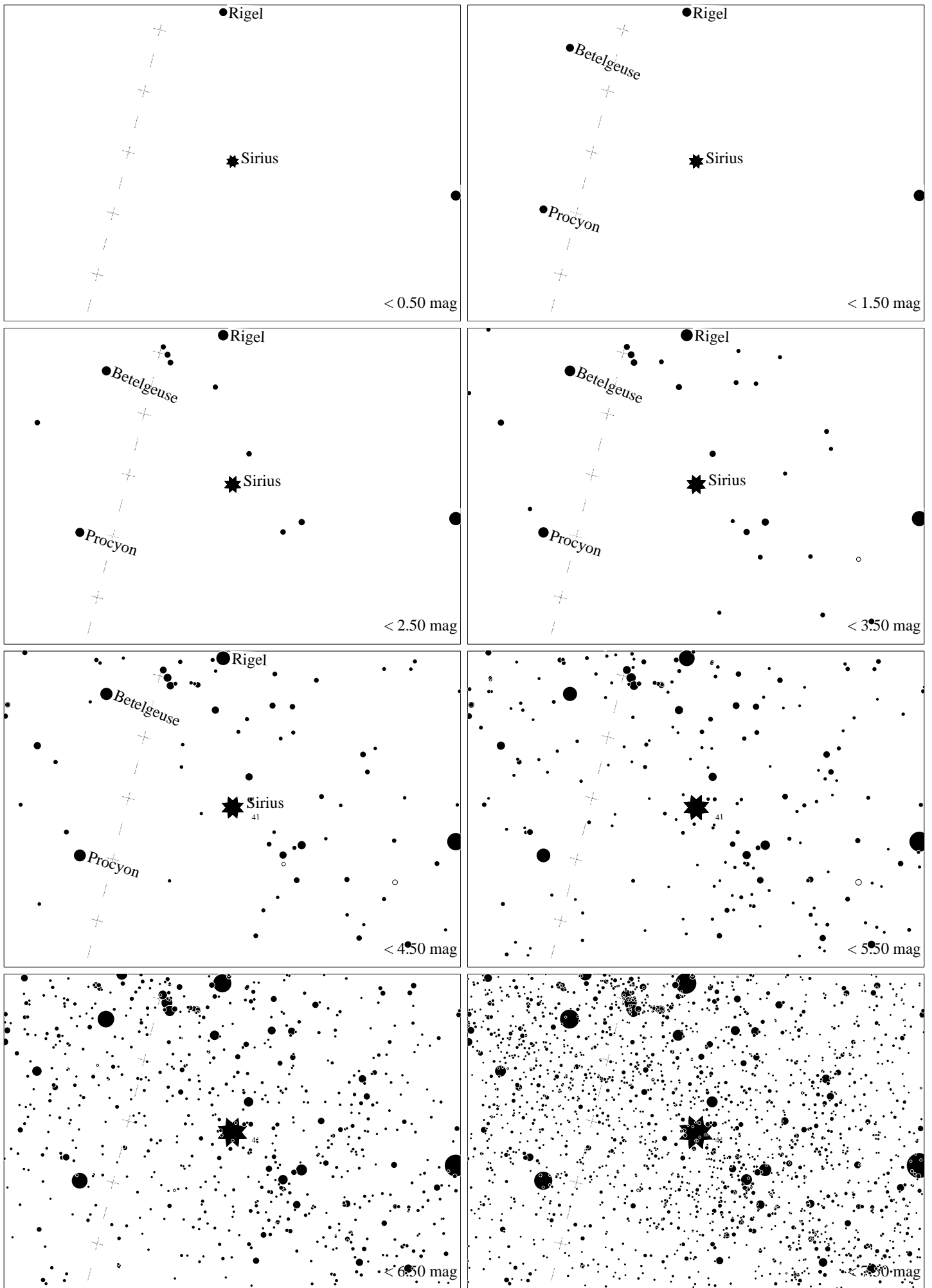
Maps for Globe at Night at latitude 30° , 2023-12-30, 21:00 local time (Sun at -49°), transparent air. Lines from N(E,S,W) to zenith shown (crosses each 10°). The brightest fixed star Sirius is 51° to the left from S, at 25° height. Star cluster M 41 marked when appropriate. Map vertical size is 50° . *Jan Hollan, CzechGlobe*



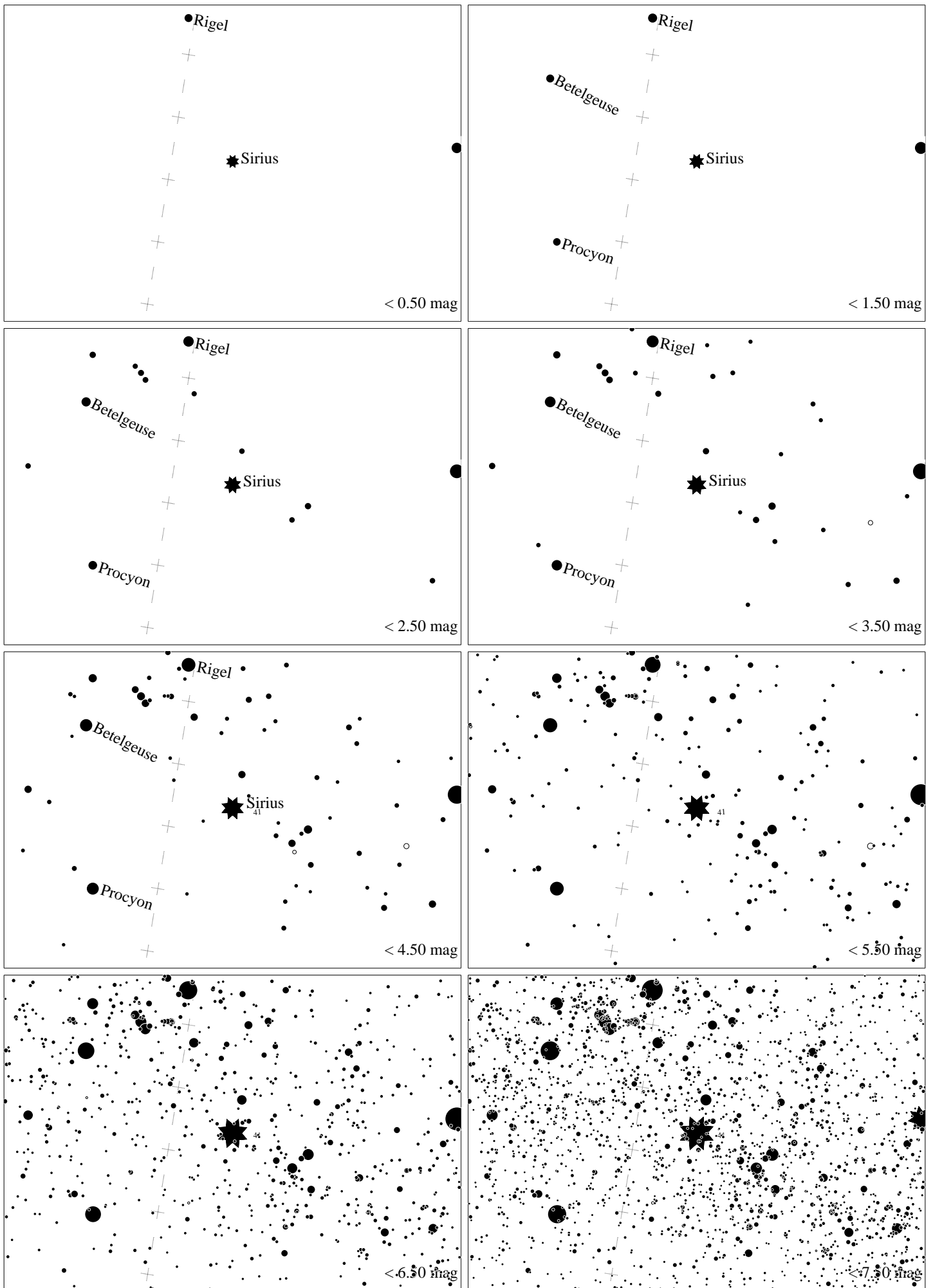
Maps for Globe at Night at latitude 20° , 2023-12-30, 21:00 local time (Sun at -48°), transparent air. Lines from N(E,S,W) to zenith shown (crosses each 10°). The brightest fixed star Sirius is 55° to the left from S, at 31° height. Star cluster M 41 marked when appropriate. Map vertical size is 50° . *Jan Hollan, CzechGlobe*



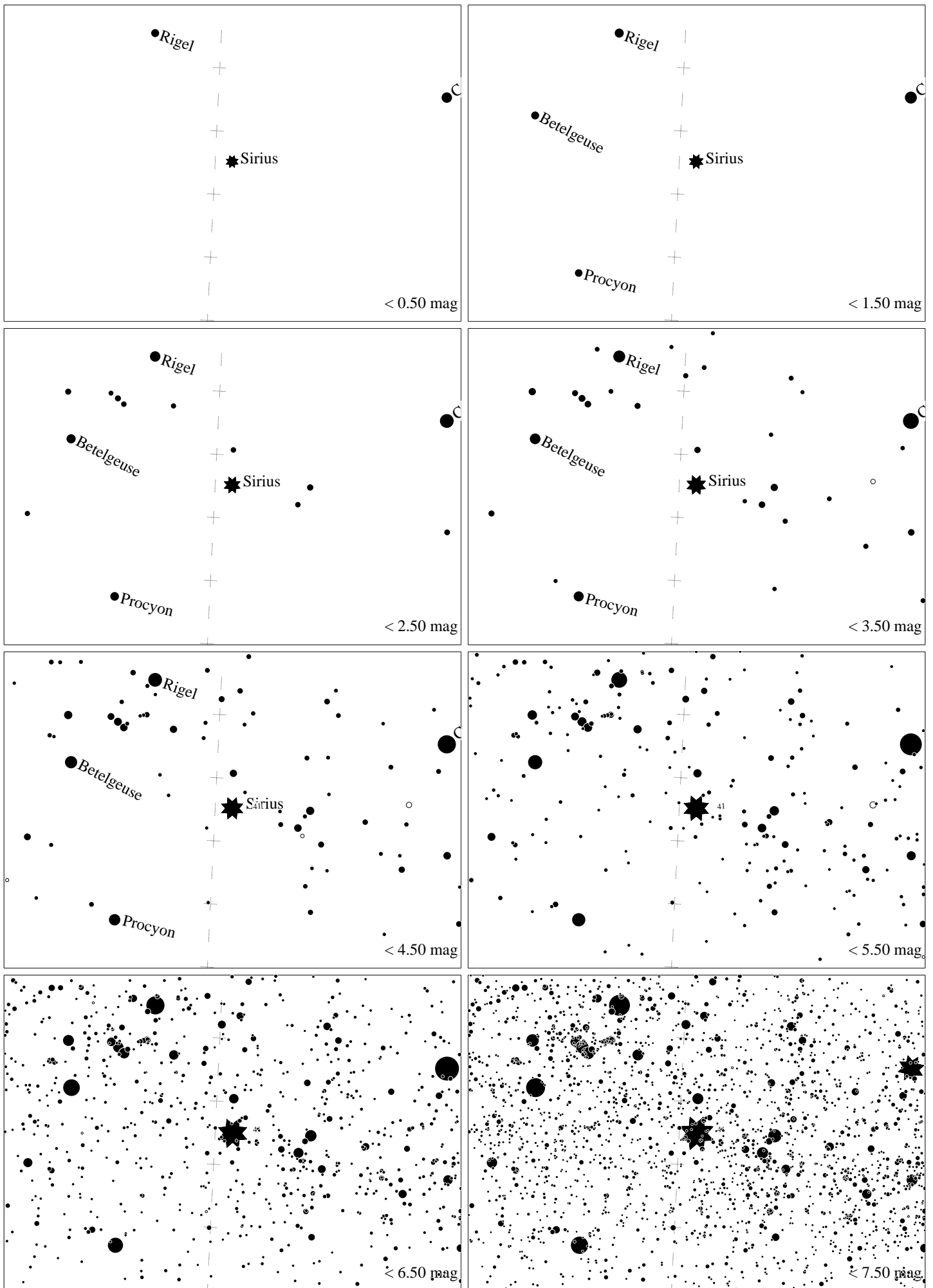
Maps for Globe at Night at latitude 10° , 2023-12-30, 21:00 local time (Sun at -44°), transparent air. Lines from N(E,S,W) to zenith shown (crosses each 10°). The brightest fixed star Sirius is 61° to the left from S, at 36° height. Star cluster M 41 marked when appropriate. Map vertical size is 50° . *Jan Hollan, CzechGlobe*



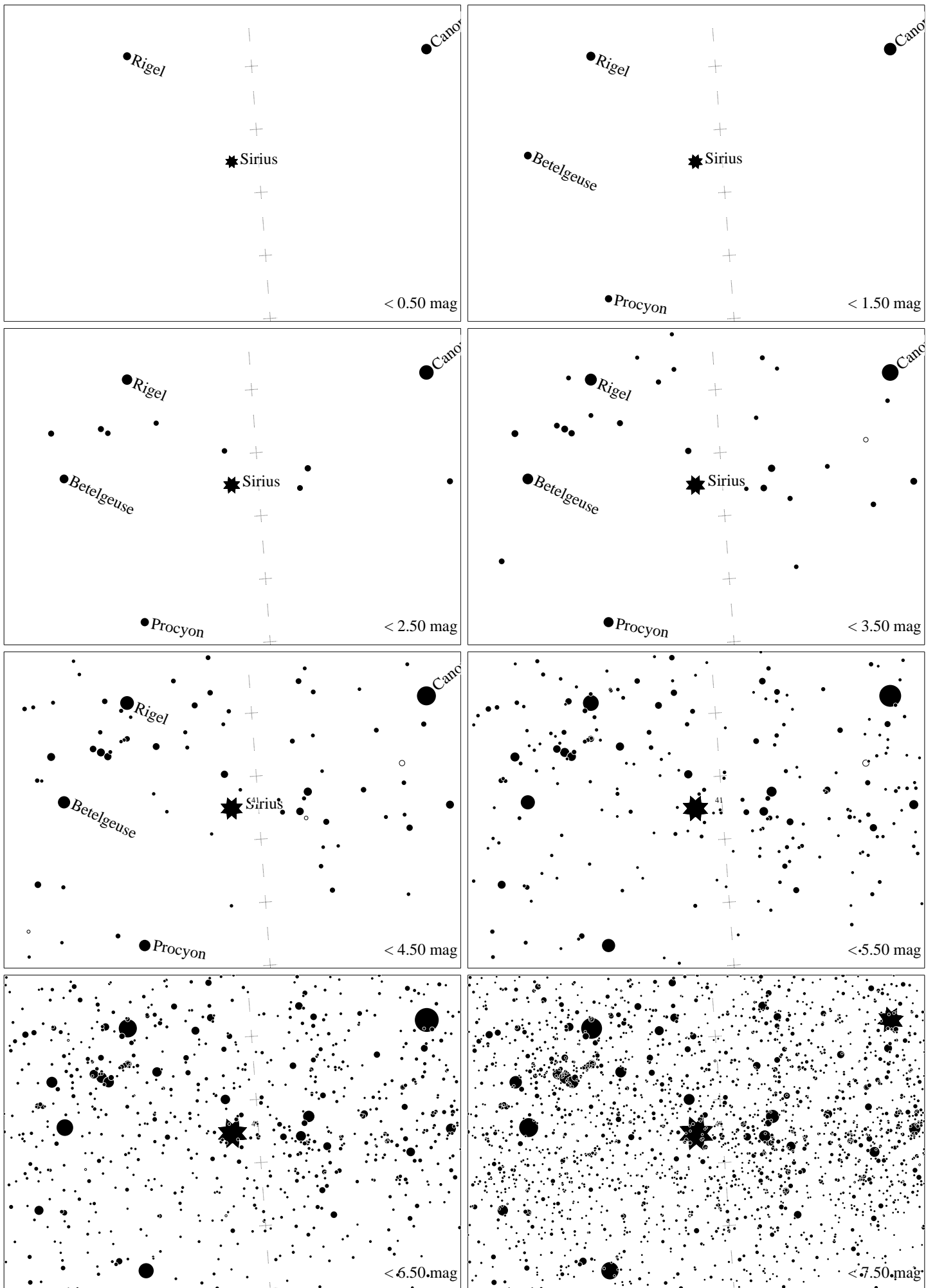
Maps for Globe at Night at latitude 0° , 2023-12-30, 21:00 local time (Sun at -40°), transparent air. Lines from N(E,S,W) to zenith shown (crosses each 10°). The brightest fixed star Sirius is 68° to the left from S, at 40° height. Star cluster M 41 marked when appropriate. Map vertical size is 50° . *Jan Hollan, CzechGlobe*



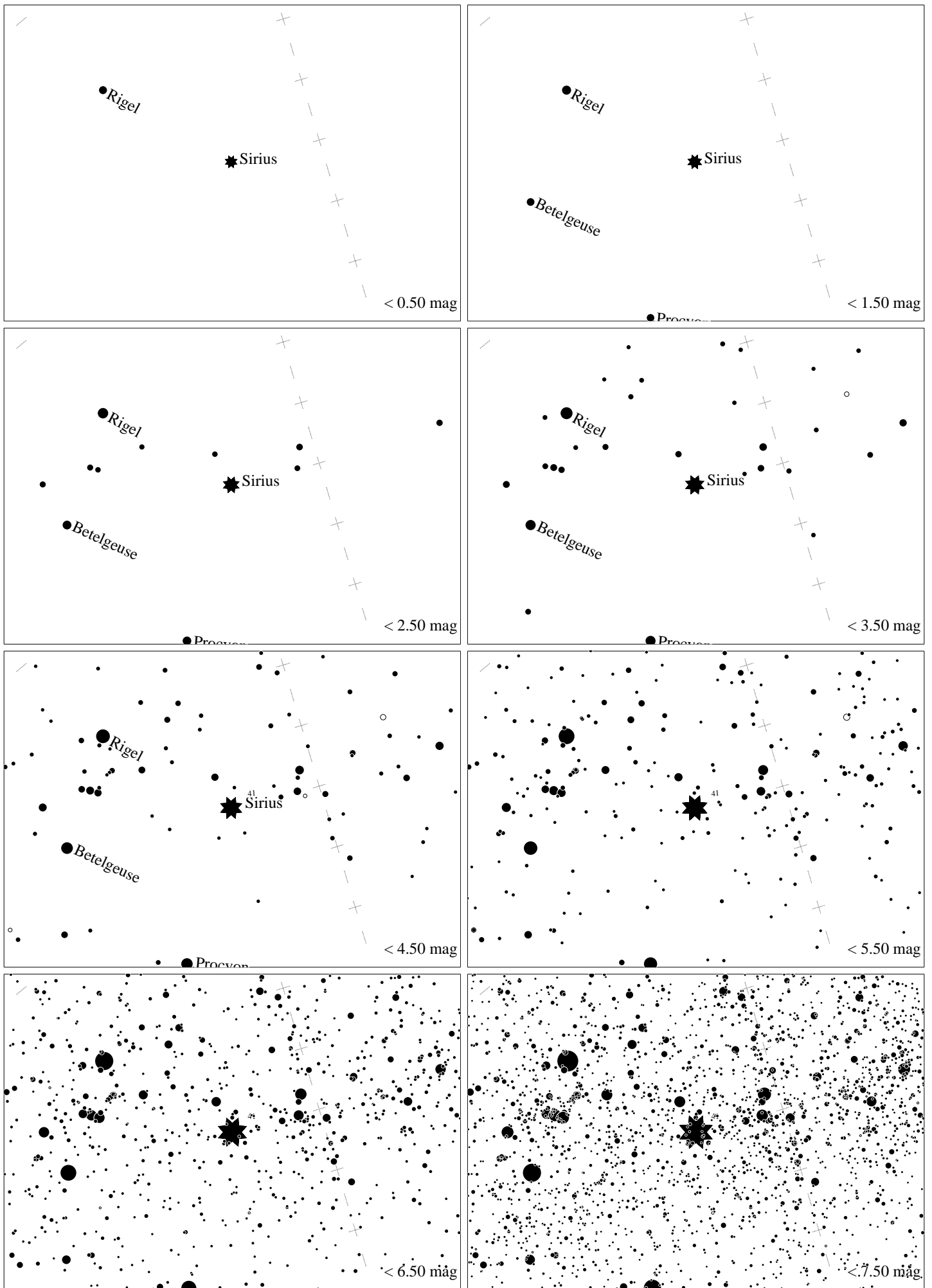
Maps for Globe at Night at latitude -10° , 2023-12-30, 21:00 local time (Sun at -34°), transparent air. Lines from N(E,S,W) to zenith shown (crosses each 10°). The brightest fixed star Sirius is 76° to the left from S, at 43° height. Star cluster M 41 marked when appropriate. Map vertical size is 50° . *Jan Hollan, CzechGlobe*



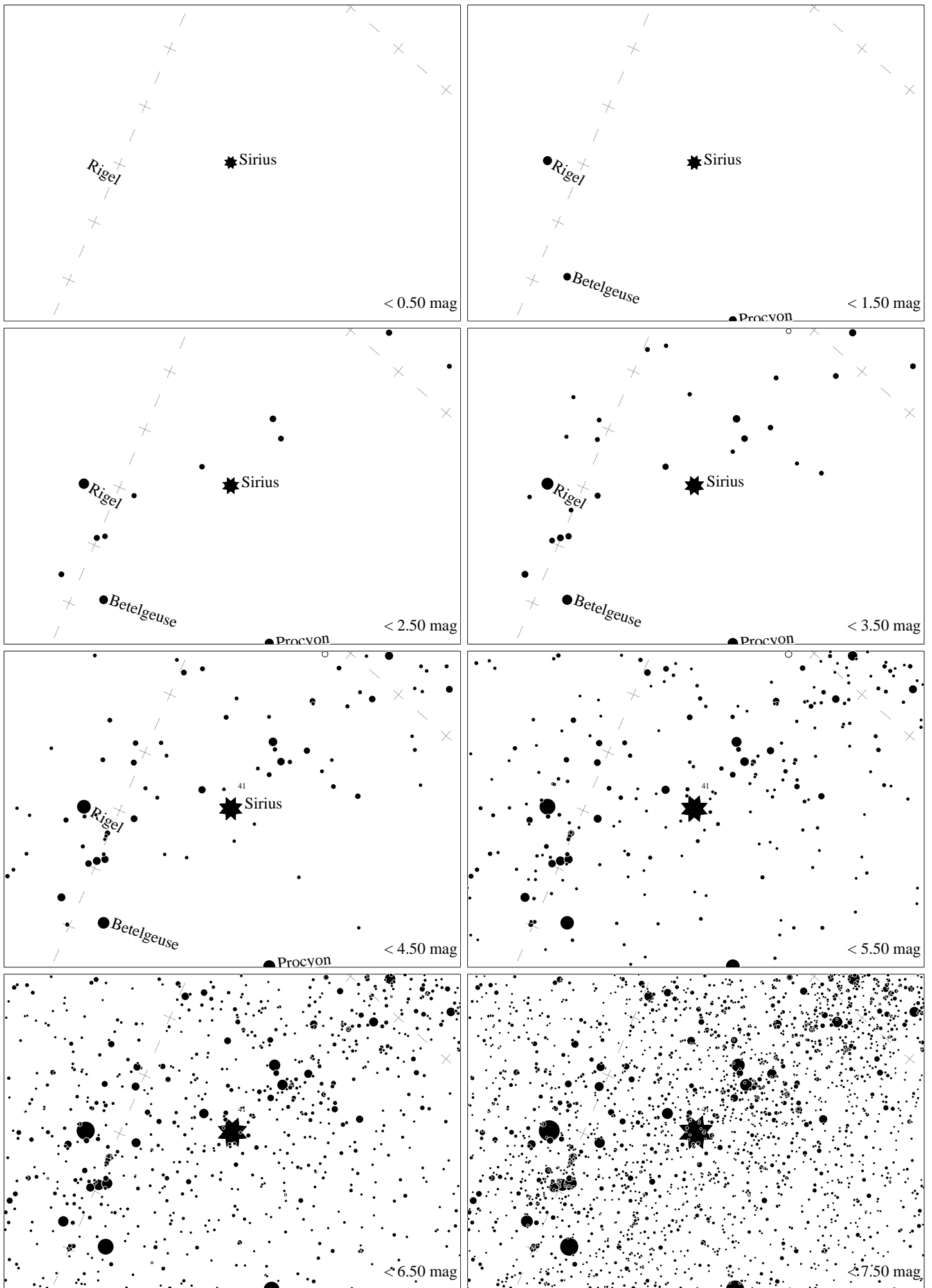
Maps for Globe at Night at latitude -20° , 2023-12-30, 21:00 local time (Sun at -28°), transparent air. Lines from N(E,S,W) to zenith shown (crosses each 10°). The brightest fixed star Sirius is 86° to the left from S, at 45° height. Star cluster M 41 marked when appropriate. Map vertical size is 50° . *Jan Hollan, CzechGlobe*



Maps for Globe at Night at latitude -30° , 2023-12-30, 21:00 local time (Sun at -21°), transparent air. Lines from N(E,S,W) to zenith shown (crosses each 10°). The brightest fixed star Sirius is 84° to the right from N, at 45° height. Star cluster M 41 marked when appropriate. Map vertical size is 50° . *Jan Hollan, CzechGlobe*



Maps for Globe at Night at latitude -40° , 2023-12-30, 21:30 local time (Sun at -18°), transparent air. Lines from N(E,S,W) to zenith shown (crosses each 10°). The brightest fixed star Sirius is 68° to the right from N, at 48° height. Star cluster M 41 marked when appropriate. Map vertical size is 50° . *Jan Hollan, CzechGlobe*



Maps for Globe at Night at latitude -50° , 2023-12-30, 23:00 local time (Sun at -16°), transparent air. Lines from N(E,S,W) to zenith shown (crosses each 10°). The brightest fixed star Sirius is 29° to the right from N, at 54° height. Star cluster M 41 marked when appropriate. Map vertical size is 50° . *Jan Hollan, CzechGlobe*